

1972
CADILLAC
OPTIONAL
SPECIFICATIONS

IMPORTANT OPTION ORDERING CHANGES

As a result of the return to 1971 Prices, Lamp Monitors, two-piece Hard Boot on the Eldorado Convertible and Bumper Insert Strips are now Factory installed options and must be specifically ordered as options. Information contained in the following pages specifying the above options as standard equipment should be disregarded.

The Lamp Monitor option includes the washer fluid monitor as in the 1971 Model.

The Bumper Insert Strip option consists of Polyvinyl Chloride impact strips to lessen damage in parking or minor collisions.

The two-piece Hard Boot option is described in detail on page 3.

Following are the ordering instructions for the above options which must be followed in placing all future orders.

Lamp Monitors - order individually by inserting code "B" in Lamp Monitor box on the order form or by ordering basic groups 1, 2, 3 or 4 which include Lamp Monitors.

Two-Piece Hard Boot - order by inserting code "G" in Convertible Top Boot box on order form.

Bumper Insert Strips - order by inserting code "V" in blank box adjacent to Convertible Top Boot box on order form.

NEW SPECIAL OPTION

ELDORADO CUSTOM CABRIOLET SUNROOF OPTION

Eldorado Cabriolet -- the ultimate Eldorado -- a limited production custom option combining an electrically operated Sunroof with tailored "Elk" grain padded vinyl roof. The Sunroof is blended beautifully into the painted sheet metal at the front of the roof, while the "Elk" grain padded vinyl crowns the rear portion of the roof. This exclusive appearance is further enhanced by handcrafted details such as a custom rolled perimeter around the backlight, a rich French seam which accents the padded area around the backlight and a halo surrounding the entire padded area consisting of a sheer chrome strap bordered by fine vinyl welts.

The Eldorado Cabriolet option is available in seven distinctive colors as shown in the chart below.

This option is available only on the Eldorado Coupe.

When ordering the Eldorado Cabriolet, enter code "C" in the Sunroof column of the order form. Then to designate the specific color "Elk" grain vinyl required, enter one of the seven top color codes in the "Top" column of the order form.

CABRIOLET "ELK" GRAIN PADDED VINYL	
D	White
F	Black
G	Medium Blue
H	Medium Gold
P	Dark Green
T	Dark Brown
W	Light Beige

Because the Cabriolet installation is an off line operation, it will require an additional 10 working days.



1972 BODY STYLES

STYLE NO.	CODE	NAME	WHEELBASE	OVERALL LENGTH
-----------	------	------	-----------	----------------

CALAIS

68247	G	Calais Coupe	130.0"	227.4"
68249	N	Calais Sedan	130.0"	227.4"

DE VILLE

68347	J	Coupe de Ville	130.0"	227.4"
68349	B	Sedan de Ville	130.0"	227.4"

FLEETWOOD ELDORADO

69347	H	Fleetwood Eldorado Coupe	126.3"	223.2"
69367	E	Fleetwood Eldorado Convertible	126.3"	223.2"

FLEETWOOD

68169	P	Fleetwood Sixty Special Brougham	133.0"	230.4"
69723	R	Fleetwood Seventy-Five Sedan	151.5"	248.9"
69733	S	Fleetwood Seventy-Five Limousine	151.5"	248.9"

69890	Z	Commercial Chassis	157.5"	254.4"
-------	---	--------------------	--------	--------

COLORS

Cadillac

1972 CODES AND IDENTIFICATION

Code	Name	Calais & De Ville	Eldorado Coupe	Eldorado Convertible	Brougham	Manufacturer's Identification
11	Cotillion White	8.2%	8.9%	13.9%	6.3%	870-3967 L 67 WD 005 926-99642
14	Contessa Pewter	2.7	2.1	1.7	3.0	870-4230 L 68 AD 024 927-AF394
18	Mayfair Gray	2.1	1.3	.6	5.6	870-4231 L 68 AD 025 927-AF395
19	Sable Black	3.4	6.1	7.2	13.5	870-848 L 67 KD 005 926-96459
24	Zodiac Blue	9.2	5.2	4.7	5.1	870-4076 L 68 BD 068 927-AF156
29	Brittany Blue	4.7	3.9	4.1	11.1	870-4077 L 68 BD 069 927-AF157
34	Adriatic Turquoise	5.5	2.3	1.6	2.7	870-3977 L 68 BD 033 927-99731
44	Sumatra Green	8.6	2.8	1.8	3.9	870-4242 L 68 GD 068 927-AF405
49	Brewster Green	3.9	2.3	1.6	5.7	870-4243 L 68 GD 069 927-AF406
50	Willow	10.9	7.9	7.0	4.0	870-4235 L 67 HD 006 926-AF399
54	Promenade Gold	10.4	4.6	2.1	5.6	870-4236 L 68 LD 025 927-AF400
59	Stratford Covert					870-4245 L 68 ND 040 927-AF408
64	Tawny Beige	4.2	1.6	1.3	2.4	870-4244 L 68 ND 041 927-AF407
69	Cognac	8.5	4.9	3.3	6.0	870-4261 L 68 ND 038 927-AF414
73	Cambridge Red	3.8	5.3	11.7	.9	870-4083 L 68 RD 043 927-AF162

FIREMIST COLORS AT EXTRA CHARGE

90	Ice Blue	2.7	10.9	10.3	4.9	L 68 BD 079 927-AF409
92	St. Moritz Blue					L 68 BD 080 927-AF430
93	Palomino	2.1	6.8	6.1	3.3	L 68 ND 042 927-AF410
94	Patrician Covert					L 68 ND 043 927-AF411
96	Balmoral Green	4.5	10.2	8.5	4.5	L 68 GD 070 927-AF412
99	Russet	1.6	3.9	2.2	3.5	L 68 ND 044 927-AF431

The above 1972 codes and identification chart shows color popularity by model for the previous year. Percentages are not indicated for colors without a 1971 counterpart; therefore, total will not equal 100%. This information is offered as a guide and does not reflect regional popularity

influenced by climatic conditions. The manufacturer's identification numbers are listed in the column at right. Inmont numbers begin with L. Eight-digit codes are Dupont. Forbes' codes begin with 8. (Forbes does not furnish Firemist.)

NEW CODES

TRIM CODES

To order the Dual Comfort Seat on the Eldorado, a new series of numbers is being introduced.

900 series trim code numbers designate the Dual Comfort Seat in the Eldorado Coupe and Convertible. As in previous years, 400 series codes are used for production option trims. Refer to pages 4 and 5 for complete listing of Eldorado trim codes.

Dual Comfort Seat is standard on the Brougham, and not available on the Calais or Seventy-Five series.

De Ville trims remain coded 300 series for standard seat and 600 series for optional Dual Comfort Seat.

EQUIPMENT

OPERA LAMPS - CODE "O"

Available on Sixty Special Brougham and Fleetwood "75" body styles, only the ordering code has changed.

RIGHT SIDE REMOTE CONTROL MIRROR - CODE "I"

Code "I" has been assigned to this popular option to eliminate duplicate codes. The availability of this option remains the same - standard on Fleetwood "75" and optional on all other body styles.

FRONT SEAT SHOULDER BELTS - CODE "S"

Front Seat Shoulder Belts are standard on all body styles except the Eldorado Convertible. To order, specify Code "S".

Rear Seat Shoulder Belts are dealer installed only.

HEAVY DUTY COOLING SYSTEM - CODE "N"

An engine and transmission cooling system with a larger fluid capacity is available to those customers who feel there is a need for this item.

Heavy Duty Cooling System is also part of the Trailing Package and is explained on page 16.

TRACK MASTER - CODE "X"

The rear wheel skid-control braking system is available on all body styles.

VINYL ROOF

All 1972 Cadillac Vinyl Roofs are padded to improve interior acoustics, in addition to appearing plush and cushioned. The fibre padding is actually part of the roof cover.

VINYL ROOFS STYLES J-B-H-P-R-S		
J	White	12J
K	Black	12K
L	Dark Blue	12L
M	Covert	12M
N	Green	12N
R	Brown	12R
S	Beige	12S

CONVERTIBLE TOP

A double convertible top, - e.g. two layers of top material - in addition to the liner is provided in 1972. This new technique makes the roof lay flat even during turnpike driving.

CONVERTIBLE TOPS STYLE E		
A	White	11A
B	Black	11B
C	Dark Blue	11C
M	Covert	11M
E	Beige	11E

CONVERTIBLE TOP BOOT

A new plastic Convertible Top Boot in exterior paint color is standard equipment. This two-piece dust boot appears as an extension of the rear deck lid and tailors the top down appearance. The boot is easily secured in place by clips that are engaged under the top well molding and two rotating lock pins.

When not in use the boot may be easily stored in two sections in the trunk.

CLOTH

1972 CADILLAC UPHOLSTERY OPTIONS

COUPE J			<i>De Ville</i>		SEDAN B	
Inserts Cloth			Bolsters Leather			
311	Black	Majesty	Black		611	
326	Dk. Blue	Majesty	Dk. Blue		626	
328	Med. Aqua	Medley	Med. Aqua		628	
331	Dk. Jade	Medley	Ant. Dk. Jade		631	
342	Med. Beige	Medley	Ant. Med. Beige		642	
344	Med. Maize	Majesty	Ant. Med. Maize		644	
346	Dk. Covert	Majesty	Ant. Dk. Covert		646	
Bench Seat is standard with 300 series codes.			600 series codes include extra charge Dual Comfort Seat which is optional on Coupe and Sedan de Ville.			

COUPE G			Calais	SEDAN N	
Inserts Cloth			Bolsters Vinyl		
211	Black	Mayfair	Black		
226	Dk. Blue	Mayfair	Dk. Blue		
228	Med. Aqua	Mayfair	Med. Aqua		
231	Dk. Jade	Mayfair	Ant. Dk. Jade		
242	Med. Beige	Mayfair	Ant. Med. Beige		
244	Med. Maize	Mayfair	Ant. Med. Maize		
EXPANDED VINYL – EXTRA CHARGE					
251	Black	285	Ant. Dk. Saddle		

FLEETWOOD ELDORADO COUPE H					
Inserts Cloth			Bolsters Vinyl		
411	Black	Morocco	Black		911
426	Dk. Blue	Morocco	Dk. Blue		926
428	Med. Aqua	Mandate	Med. Aqua		928
431	Dk. Jade	Mandate	Ant. Dk. Jade		931
442	Med. Beige	Mandate	Ant. Med. Beige		942
444	Med. Maize	Morocco	Ant. Med. Maize		944
446	Dk. Covert	Morocco	Ant. Dk. Covert		946
Bench seat is standard with 400 series codes. 900 Series codes include extra charge Dual Comfort Seat which is optional on Eldorado Coupe.					

BROUGHAM P	FLEETWOOD			"75" SEDAN R LIMOUSINE S
	Inserts Cloth		Bolsters Leather	
011	Black	Matador	Black	711
026	Dk. Blue	Matador	Dk. Blue	726
031	Dk. Jade	Matador	Ant. Dk. Jade	
046	Dk. Covert	Matador	Ant. Dk. Covert	
All Cloth — Inserts & Bolsters				
019		Pewter	Minuet	719
028		Med. Aqua	Minuet	742
		Med. Beige	Minuet	
044		Med. Maize	Minuet	
70TH ANNIVERSARY CLOTH				
043		Med. Beige	Medici	
Dual Comfort Seat is standard on Brougham.			Bench seat is standard on Fleetwood Seventy-five. Limousine front compartment is black leather.	

LEATHER

1972 CADILLAC UPHOLSTERY OPTIONS

COUPE J	<i>De Ville</i>	SEDAN B
LEATHER — EXTRA CHARGE		
351	Black	651
352	White—Black Carpet	652
353	White—Blue Carpet	653
354	White—Oxblood Carpet	654
357	White—Jade Carpet	657
366	Dk. Blue	666
371	Antique Dk. Jade	671
383	Antique Lt. Covert	683
384	Antique Med. Maize	684
385	Antique Dk. Saddle	685
386	Antique Dk. Covert	686
389	Antique Oxblood	689
Bench Seat is standard with 300 series codes.		600 series codes include extra charge Dual Comfort Seat which is optional on Coupe and Sedan de Ville.

FLEETWOOD			
BROUGHAM P	LEATHER — EXTRA CHARGE EXCEPT CONVERTIBLE	ELDORADO COUPE H CONVERTIBLE E	
051	Black	451	951
052	White—Black Carpet	452	952
053	White—Blue Carpet	453	953
054	White—Oxblood Carpet	454	954
057	White—Jade Carpet	457	957
066	Dk. Blue	466	966
071	Antique Dk. Jade	471	971
083	Antique Lt. Covert	483	983
084	Antique Med. Maize	484	984
085	Antique Dk. Saddle	485	985
086	Antique Dk. Covert	486	986
089	Antique Oxblood	489	989
Dual Comfort Seat is standard on Brougham.		Bench Seat is standard with 400 series codes. 900 Series codes include extra charge Dual Comfort Seat which is optional on Eldorado Coupe and Convertible.	

CONVERTIBLE TOPS STYLE E		
A	White	11A
B	Black	11B
C	Dark Blue	11C
M	Covert	11M
E	Beige	11E

VINYL ROOFS STYLES J-B-H-P-R-S		
J	White	12J
K	Black	12K
L	Dark Blue	12L
M	Covert	12M
N	Green	12N
R	Brown	12R
S	Beige	12S

INTERIOR ORNAMENTATION

Rosewood appliques will be used on the doors and instrument panels of all cars with all trims except the Calais.

Detailed interior ornamentation information is listed below.

CALAIS

Door inserts are vinyl to match the upholstery color surrounded by a bright bezel.

Instrument panel insert is Black camera grain.

DE VILLE

Rosewood applique is used for door and instrument panel inserts with all upholstery selections.

FLEETWOOD ELDORADO

Rosewood applique is used for door and instrument panel inserts with all upholstery selections. Carved wood appliques are on either side of the clock and are the escutcheons for the door pull strap.

FLEETWOOD BROUGHAM AND "75"

Rosewood applique is used for door and instrument panel inserts with all upholstery selections. Appliques in an ornate design are on either side of the clock and are the escutcheons for the door pull strap.

EXTERIOR ORNAMENTATION

BODY SIDE MOLDING

Calais, De Ville, Eldorado and Seventy-Five cars have a bright stainless steel body side molding.

Fleetwood Brougham has a bright stainless steel molding with colored vinyl insert matching padded vinyl roof. If delete padded roof option is ordered, vinyl insert is Black.

UPPER REAR QUARTERS

Fleetwood Brougham has wreath and crest with Brougham script. Wreath and crest are eliminated when Opera Lamps are ordered.

De Ville in script is on the sail panel.

Calais, Eldorado and Seventy-Five cars do not have ornamentation in this area.

FRONT FENDERS

Eldorado has 8.2 Litre plaque on front fender and a new Eldorado script above the cornering lamps.

Fleetwood in coined block letters on the Seventy-Five cars.

HOOD AND REAR DECK

Eldorado has stand-up wreath and crest on hood. Calais and De Ville have new V and crest on hood and rear deck. A new chrome molding extends the length of the hood. On Fleetwood cars a wreath surrounds the crest on hood and rear deck.

SERIES IDENTIFICATION

Eldorado in script is on the rear deck lid and on the front fenders above the cornering light.

Fleetwood in coined block letters is on the rear deck and on the front fenders of the Brougham and Seventy-Five.

Coupe De Ville and Sedan De Ville on sail panel as mentioned above and Cadillac on deck lid.

Calais has Cadillac script on front quarters and Calais on rear deck lid.

COLOR-TOP

1972 RECOMMENDATIONS

COLOR	BROUGHAM PADDED ROOFS	ELDORADO PADDED ROOFS	DE VILLE PADDED ROOFS	CONVERTIBLE TOPS
11 Cotillion White	K J L	J K L	K J L	A B C
14 Contessa Pewter	K M J	K J M	K J M	B A M
18 Mayfair Gray	K J	K J	K J	B A
19 Sable Black	K J	K J	K J	B A
24 Zodiac Blue	L J K	J L K	L J K	A C
29 Brittany Blue	L K J	J L K	L J K	A C
34 Adriatic Turquoise	J K	J K	J K	A B
44 Sumatra Green	N K J	N J K	N J K	A B
49 Brewster Green	K N S	N K J S	N K J S	A B E
50 Willow	M J K	M K J	M K J	M A B
54 Promenade Gold	K J M	J K M	K J M	A B M
59 Stratford Covert	M S J K	M S J K	M S J K	M A E B
64 Tawny Beige	R S K	R S K	R S K	A E B
69 Cognac	R S K	R S J K	R S J K	E A B
73 Cambridge Red	K J	J K	J K	A B

FIREMIST COLORS AT EXTRA CHARGE

90 Ice Blue	L J K	L J K	J L K	A C
92 St. Moritz Blue	L J K	J L K	J L K	A C
93 Palomino	R J K S	R J K S	R J K S	A B E
94 Patrician Covert	M J S K	M J S K	M J S K	M A E B
96 Balmoral Green	N J K	J N K	N J K	A B
99 Russet	R S K	R S J K	R S J K	E A B

VINYL ROOFS		
J	White	12J
K	Black	12K
L	Dk. Blue	12L
M	Covert	12M
N	Green	12N
R	Brown	12R
S	Beige	12S

CONVERTIBLE TOPS		
A	White	11A
B	Black	11B
C	Dk. Blue	11C
M	Covert	11M
E	Beige	11E

COLOR-TRIM

Cadillac

1972 RECOMMENDATIONS

COLOR	DE VILLE SERIES				CALAIS SERIES			
	Coupe J		Sedan B		Coupe G		Sedan N	
	CLOTH		LEATHER		CLOTH		VINYL	
11 Cotillion White	311 or 611	326 or 626 328 or 628 344 or 644	351 or 651	389 or 689 366 or 666 352 or 652	211 226 228		251 285	
14 Contessa Pewter	311 or 611	346 or 646 331 or 631	351 or 651	386 or 686 371 or 671 357 or 657	211 231		251	
18 Mayfair Gray	311 or 611	346 or 646	351 or 651	352 or 652	211		251	
19 Sable Black	311 or 611	326 or 626 344 or 644	351 or 651	352 or 652 389 or 689	211 226		251	
24 Zodiac Blue	326 or 626	311 or 611	366 or 666	353 or 653 351 or 651	226 211		251	
29 Brittany Blue	326 or 626	311 or 611	366 or 666	353 or 653 351 or 651	226 211		251	
34 Adriatic Turquoise	328 or 628	311 or 611	352 or 652	351 or 651	228 211		251	
44 Sumatra Green	331 or 631	311 or 611	371 or 671	357 or 657 351 or 651	231 211		251	
49 Brewster Green	331 or 631	311 or 611	371 or 671	357 or 657 351 or 651 383 or 683	231 211		251 285	
50 Willow	346 or 646	311 or 611 344 or 644	386 or 686	383 or 683 351 or 651 352 or 652	244 211		251	
54 Promenade Gold	344 or 644	311 or 611 346 or 646	384 or 684	351 or 651 386 or 686 385 or 685	244 211		285 251	
59 Stratford Covert	346 or 646	344 or 644 311 or 611	383 or 683	386 or 686 384 or 684 351 or 651	211 244		251 285	
64 Tawny Beige	342 or 642	311 or 611	389 or 689	351 or 651 385 or 685	242 211		285 251	
69 Cognac	342 or 642	311 or 611	385 or 685	351 or 651	242 211		285 251	
73 Cambridge Red	311 or 611		354 or 654	389 or 689 351 or 651	211		251	

FIREMIST COLORS AT EXTRA CHARGE

90 Ice Blue	326 or 626	311 or 611	366 or 666	353 or 653 351 or 651	226 211		251	
92 St. Moritz Blue	326 or 626	311 or 611	353 or 653	366 or 666 351 or 651	226 211		251	
93 Palomino	342 or 642	311 or 611	385 or 685	352 or 652 351 or 651	211 242		285 251	
94 Patrician Covert	346 or 646	311 or 611 344 or 644	383 or 683	386 or 686 352 or 652 351 or 651	211 244		251 285	
96 Balmoral Green	331 or 631	311 or 611	371 or 671	357 or 657 351 or 651	231 211		251	
99 Russet	342 or 642	311 or 611	385 or 685	351 or 651 352 or 652	242 211		285 251	



COLOR-TRIM

1972 RECOMMENDATIONS

COLOR	FLEETWOOD SERIES						
	Eldorado Convertible E		Eldorado Coupe H			Brougham P	
	LEATHER		CLOTH	LEATHER		CLOTH	LEATHER
11 Cotillion White	489 or 989 451 or 951	452 or 952 466 or 966	411 or 911 426 or 926 444 or 944	452 or 952 489 or 989	451 or 951 466 or 966	011 026 028	051 052 089 066
14 Contessa Pewter	451 or 951 457 or 957	471 or 971	411 or 911 446 or 946 431 or 931	451 or 951 457 or 957	471 or 971	011 019 046	051 071 052
18 Mayfair Gray	451 or 951 486 or 986	452 or 952	411 or 911 446 or 946	451 or 951 486 or 986	452 or 952	011 019 046	051 052 086
19 Sable Black	451 or 951 452 or 952	489 or 989	411 or 911 444 or 944	451 or 951 452 or 952	489 or 989	011 019 026 043	051 089 052
24 Zodiac Blue	453 or 953 451 or 951	466 or 966	426 or 926 411 or 911	466 or 966 451 or 951	453 or 953	026 011	066 053 052 051
29 Brittany Blue	453 or 953 489 or 989	466 or 966	426 or 926 411 or 911	466 or 966 451 or 951	453 or 953	026 011	066 053 052 051
34 Adriatic Turquoise	452 or 952	451 or 951	428 or 928 411 or 911	452 or 952	451 or 951	028 011	052 051
44 Sumatra Green	471 or 971 451 or 951	457 or 957	431 or 931 411 or 911	471 or 971 451 or 951	457 or 957	031 011	071 057 052 051
49 Brewster Green	471 or 971 451 or 951	457 or 957 483 or 983	431 or 931 411 or 911	471 or 971 451 or 951	457 or 957 483 or 983	031 011	071 057 051 083
50 Willow	486 or 986 451 or 951	483 or 983 452 or 952	446 or 946 411 or 911	486 or 986 451 or 951	483 or 983 452 or 952	046 011 044	086 083 051 052
54 Promenade Gold	484 or 984 486 or 986	451 or 951 485 or 985	444 or 944 411 or 911 446 or 946	484 or 984 486 or 986	451 or 951 485 or 985	044 011 046 043	084 051 086 085
59 Stratford Covert	483 or 983 484 or 984	486 or 986 451 or 951	446 or 946 444 or 944 411 or 911	483 or 983 484 or 984	486 or 986 451 or 951	046 044 043 011	083 086 084 051
64 Tawny Beige	489 or 989 485 or 985	451 or 951	442 or 942 411 or 911	489 or 989 485 or 985	451 or 951	043 011	089 051 085
69 Cognac	485 or 985	451 or 951	442 or 942 411 or 911	485 or 985	451 or 951	043 011	085 051
73 Cambridge Red	454 or 954 451 or 951	489 or 989	411 or 911	454 or 954 451 or 951	489 or 989	011	089 054 052 051

FIREMIST COLORS AT EXTRA CHARGE

90 Ice Blue	453 or 953 451 or 951	466 or 966	426 or 926 411 or 911	466 or 966 451 or 951	453 or 953	026 011	066 053 052 051
92 St. Moritz Blue	453 or 953	466 or 966	426 or 926 411 or 911	466 or 966 451 or 951	453 or 953	026 011	066 053 052 051
93 Palomino	485 or 985 451 or 951	452 or 952	442 or 942 411 or 911	485 or 985 451 or 951	452 or 952	043 011	085 052 051
94 Patrician Covert	483 or 983 452 or 952	486 or 986 451 or 951	446 or 946 411 or 911	483 or 983 452 or 952	486 or 986 451 or 951	046 043 011 044	083 086 052 051
96 Balmoral Green	457 or 957 451 or 951	471 or 971	431 or 931 411 or 911	471 or 971 451 or 951	457 or 957	031 011	071 057 052 051
99 Russet	485 or 985 452 or 952	451 or 951	442 or 942 411 or 911	485 or 985 452 or 952	451 or 951	043 011	085 051 052

ELDORADO

ACCENT STRIPE RECOMMENDATIONS

Code	Exterior Color	Accent Stripe Colors			
11	Cotillion White	All Except White			
14	Contessa Pewter	Covert	Black	White	Red
18	Mayfair Gray	White	Black	Covert	Red
19	Sable Black	All Except Black			
24	Zodiac Blue	Blue	White	Black	
29	Brittany Blue	Blue	White	Red	
34	Adriatic Turquoise	White	Black		
44	Sumatra Green	Green	Gold	White	Black
49	Brewster Green	Green	Gold	White	
50	Willow	Covert	Black	Brown	
54	Promenade Gold	Gold	Covert	Brown	Black
59	Stratford Covert	Gold	Brown	Covert	Black
64	Tawny Beige	Brown	Black	Red	
69	Cognac	Gold	Brown	Black	
73	Cambridge Red	White	Red	Black	

FIREMIST COLORS AT EXTRA CHARGE

90	Ice Blue	Blue	White	Black	Red
92	St. Moritz Blue	Blue	White	Red	
93	Palomino	Brown	Gold	Covert	Black
94	Patrician Covert	Covert	Gold	White	Black
96	Balmoral Green	Green	White	Black	
99	Russet	Brown	Gold	White	Black

ACCENT STRIPE			
Styles H E			
1	Black	5	Green
2	White	6	Gold
3	Blue	7	Brown
4	Covert	8	Red

Cadillac 1972 EQUIPMENT

OPTIONS

BASIC GROUPS

		Group 1 Y31			
		Group 2 Y32		Group 3 Y33	
		Group 4 Y34			
1	RADIO, AM-FM STEREO-TAPE PLAYER Pushbutton (UM2)	1	2	3	4
2	RADIO, AM-FM STEREO-SIGNAL SEEKING (UN2)	↑ ↓	↑ ↓	↑ ↓	4
3	RADIO, AM-FM-Pushbutton (U69)				
4	RADIO, AM-FM STEREO-SIGNAL SEEKING REAR CONTROL ("75" Only) (U67)				
W	WHITewALL TIRES, FIBERGLASS BELTED BIAS (QO3)	W	W	W	W
E	SOFT RAY GLASS (AO1)	E	E	E	E
D	DOOR EDGE GUARDS (B93)	D	D	D	D
K	AUTOMATIC CLIMATE CONTROL (C61)	K	K	K	STD.
Y	SEAT ADJUSTER, POWER FRONT 6-Way Bench (A42) 6-Way Driver's Dual Comfort (AG1)	Y	Y	Y	Y Except Style S

EQUIPMENT GROUPS

Group 8 Y38

M	DOOR LOCKS, POWER (AU3)
Q	STEERING WHEEL, TILT & TELESCOPE (N37)
T	TRUNK LOCK, REMOTE CONTROL (A90)
F	FLOOR MATS, RUBBER (Y28)
P	TRUNK MAT (B36)

Group 9 Y39

J	TWILIGHT SENTINEL (T82)
A	DE FOGGER, REAR WINDOW (C50)
A	DE-FOGGER-GRID TYPE (C49)
C	CRUISE CONTROL (K30)
U	HEADLAMP CONTROL, GUIDE-MATIC (T80)

ORDER INDIVIDUALLY

	DUAL COMFORT SEAT (AM6)
V	SEAT ADJUSTER, POWER FRONT 6-Way Passenger Dual Comfort (only when code Y ordered) (AG2)
5	ONE LICENSE FRAME AND FILLER PLATE (V50)
6	TWO LICENSE FRAMES (V51)
7	FILLER PLATE (VK1)
S	SUNROOF (CA1)
O	OPERA LAMPS ("75" & Brougham Only) (C93)
I	RIGHT SIDE REMOTE CONTROL MIRROR (DF3)

G	CONTROLLED DIFFERENTIAL (Not on Eldorado) (G80)
L	LEVEL CONTROL, AUTOMATIC (G67)
H	TRUMPET HORN (UB8)
S	SHOULDER BELTS, FRONT (A85)
X	TRACK MASTER (JL9)
Z	3.15 to 1 AXLE RATIO (G90)
R	TRAILERING PACKAGE (YM7)
N	HEAVY DUTY COOLING (V01)

SUNROOF

Sunroof Option - Code S - is available on De Ville and Fleetwood series cars with vinyl roofs. A switch on the instrument panel activates an electric motor that moves the Sunroof panel into a hollow under the roof and above the headlining.

Sunroof is positioned above the front seat. In order to obtain maximum benefit from the Sunroof, it is suggested that a 6-way Power Seat Adjuster be ordered.

Because the Sunroof installation is an "off-line" procedure, cars must be scheduled for production on a first-in, first-out basis to maintain an orderly flow. Sunroof installation adds approximately ten days to the normal estimated production date indicated on the Production Notice.

GENERATORS

Ampere Capacity of generator is as follows:

- 63 AMP - Air Conditioned Cars
- 42 AMP - Non-Air Conditioned Cars
- 80 AMP - "75" Sedan and Limousine

Generators used on the Eldorado and "75" series cars will have an integrated regu-

lator. All other cars will have a separate regulator.

Ampere capacity has been increased to accommodate the needs of all cars. For cars that will be equipped with telephones or other electrically operated equipment, an 80 AMP Generator is available on special order.

GEAR RATIOS

Gear Ratios are the same for cars equipped with Automatic Climate Control and those ordered without air conditioning. Gear Ratios are listed below:

- 2.93 - 1 for "C" Cars
- 3.07 - 1 for Eldorado
- 3.15 - 1 for "75"

There are no options for the Eldorado or "75".

3.15 - 1 Axle Gear Ratio may be ordered on the Calais, De Ville or Brougham by specifying code Z on the order form. This gear ratio is offered for cars that will pull trailers or operate in mountainous areas.

GLASS

STANDARD

Clear solid tempered safety plate glass is standard in all side and rear windows. The rear window on the Convertible will be Soft Ray Glass in all cases.

The windshield on all cars and division glass in the "75" Limousine are laminated safety plate glass. The windshield on all cars will have the impregnated radio antenna.

OPTIONAL - CODE E

Soft Ray Glass is tinted and the upper part of the windshield is shaded. In addition to providing relief from the sun's rays, Soft Ray Glass aids Automatic Climate Control by screening infra-red heat rays.

Soft Ray Glass is recommended, especially when Automatic Climate Control is ordered.

TIRES

STANDARD

Blackwall Fiberglass Belted tires, size L78-15, load range B, are standard on all cars except "75" Sedan and Limousine. On "75" cars, the L78-15, load range D tire is standard.

OPTIONAL

Whitewall tires of the same size are optional. Two white (one broad outside and one narrow inside) bands accent the sidewall. This whitewall treatment lends itself to the formal appearance of the 1972 Cadillac. Order basic group 1 through 4 or specify code W.

To specify a tire brand, use the following codes:

U - Uniroyal	G - Goodrich
F - Firestone	Y - Goodyear
E - General	

FIBERGLASS BELTED TIRES

The construction and configuration of this tire are designed to increase tread wear, improve handling characteristics and make the tire more resistant to road hazards.

This tire is made with two plies of polyester cord body and two fiberglass belts. The two plies of polyester cord and the fiberglass belts are applied on the bias.

ALL TIRE BRANDS NOT ALWAYS AVAILABLE

Tires for Cadillac cars are supplied by five manufacturers in a variety of sizes, and black or white side walls. This complexity creates storage problems that make a continual inventory of all makes and types difficult to maintain.

Also, availability problems are encountered since all tires must meet the standards of Cadillac's quality control program. It is realized that some customers designate a tire brand preference which dealers understandably wish to accommodate. However, as a relatively small percentage of such requests can be considered without risking a delay in car production, only in case of customer insistence should tire brands be specified on the car order.

Notwithstanding these situations, Cadillac will endeavor to supply a tire brand option, provided such requests do not exceed 5% of a dealer's orders during a model year.

Black side wall tires are standard equipment on all cars. Because of the extremely small demand, it is not feasible to offer a black wall tire brand option even on a limited basis.

TRACK MASTER

Track Master—Code X—a computer controlled rear wheel braking system is available on all styles. The primary purpose of this device is to sense any impending lockup of the rear wheels and automatically "pump" the brakes; thereby enabling the average driver to maintain vehicle control while stopping in the shorter distances usually obtainable only by skilled drivers. This system partially releases the rear brakes as they approach the skid point and then automatically reapplies them. This process

repeats with the brakes being alternately applied and released as long as the impending skid situation prevails.

The system's major components are: a pair of electric sensors on the rear axle to monitor rear wheel speed; an electronic computer under the instrument panel that determines rear optimum wheel braking performance; and a modulator on the cowl in the engine compartment that controls the rear brake pressure to prevent skids.

NEW MODEL INFORMATION

NUMBER OF TRIM OPTIONS

182 trim options in 14 colors are available in 1972.

New colors are introduced in the shades of Jade, Light Covert, Oxblood and Dark Covert. Additionally, Light Pewter Minuet cloth is a new shade of Gray; available in the Brougham and "75" only. The 1972 Upholstery selection is one of the most complete ever.

Dual Comfort Seat is available as an option on Eldorado Coupe and Convertible, as well as the DeVille models for 1972. Dual Comfort Seat is standard on the Fleetwood Brougham.

Cadillac's 70th Anniversary cloth is a soft, crushed velour type upholstery material, called Medici, available in the Fleetwood Brougham in Beige only. Trim code is 043.

White leather with Jade carpets, trim codes 057, 357 and 457, is offered due to numerous customer and dealer requests and it is very attractive when used with the three, new Green exterior colors.

White leather is now available with Black, Blue, Oxblood and Jade carpets and instrument panels as standard production options, in all styles except the "75" Series.

NEW TRIM CODES

Eldorado 900 series trim codes are used for the optional Dual Comfort Seat. The Trim Chart contains a complete listing of these codes.

400 series trim codes are used for standard Eldorado bench seats.

Use 600 series codes for optional Dual Comfort Seat on Coupe and Sedan de Ville.

Brougham code (which includes standard Dual Comfort Seat) will start with 0.

LEATHER UPHOLSTERY

When referring to Leather Upholstery, note that some areas are trimmed with vinyl. Leather is used for all touch and feel areas. Vinyl is used for facings and matches leather in texture and color.

The cushion and backrests are leather and only those areas too large to cover with a single piece of leather are vinyl upholstered. Vinyl is more suitable for these areas because of its elasticity.

HEADLINING

Headlining matches upholstery material color.

Regiment, a vinyl headlining, is used for all Calais, De Ville, Eldorado and Brougham cars with the following exceptions:

Taffeta perforated vinyl is used in all white leather upholstery combinations.

Ascot cloth is used with cloth upholstery in the Brougham and Seventy-Five.

ACCENT STRIPE

A new design Accent Stripe is available on the Eldorado when a color is specified. Accent Stripe will be omitted when a code is not specified. The Accent Strip consists of three fine line paint stripes, one at the top break line on the hood bevel and a double stripe at the lower break line. The Accent Stripes are parallel, the top one extending to the hood molding and the lower stripes end at the rear edge of the door.

NOTE: Accent Stripe code must be specified, otherwise stripe will be omitted.

Listed below are Accent Stripe colors and codes:

ACCENT STRIPES			
Styles H-E			
1	Black	5	Green
2	White	6	Gold
3	Blue	7	Brown
4	Covert	8	Red

RUBBER FLOOR MATS

SALES CODE	UPC CODES	COLOR	TWIN FRONT & REAR			ONE PIECE FRONT & REAR	TWIN FRONT ONLY	
			Calais G N	De Ville J B	Brougham P	Eldorado H E	"75" Sedan R	"75" Limo S
1	(YL4)	Black	211	311 611	011	411 911	711	711
			228	328 628	028	428 928		719
			251	346 646	046	446 946		726
				351 651	051	451 951		742
				352 652	052	452 952		
				354 654	054	454 954		
				383 683	083	483 983		
				386 686	086	486 986		
				389 689	089	489 989		
2	(YL6)	Blue	226	326 626	026	426 926	726	
				353 653	053	453 953		
				366 666	066	466 966		
3	(YL7)	Jade	231	331 631	019	431 931	719	
				357 657	031	457 957		
				371 671	057	471 971		
					071			
4	(YL9)	Maize	242	342 642	043	442 942	742	
			244	344 644	044	444 944		
			285	384 684	084	484 984		
				385 685	085	485 985		

Floor Mats are installed by trim selected according to the above chart, if a specific color is not ordered.

To order Floor Mats, specify group 8 or code F. To order a specific color in place of the standard combinations listed above, instead of code F, or in addition to group 8, use one of the codes above.

U.P.C. codes are listed for reference purposes only.

A one-piece Gray Trunk Mat is included in group 8 or may be ordered by specifying code P.

Eldorado Convertible and Fleetwood "75" Trunk Mat must be pierced to fit over the spare tire mount.

A spare tire cover in fabric matching the trunk lining is standard on all cars.

TRAILERING PACKAGE

A Trailering Package providing the necessary heavy duty equipment for trailering is an available option.

The package is designed primarily for trailers weighing between 2,000 and 6,000 pounds, which are designated by the Society of Automotive Engineers as Class II and Class III.

Trailering Package consists of the following:

80 AMP Generator with Integral Regulator
Special Cooling Package (Radiator and Fan)*
3.15 to 1 Axle Ratio (Not Available on Eldorado)

* Additional transmission cooling is built into the larger radiator, eliminating the need for other transmission cooling devices.

Other equipment specific to a particular trailer, such as platform, wiring harness and brake controller should be purchased locally. The Trailering Package is offered on the Calais, De Ville, Eldorado and Brougham. Fleetwood Seventy-Five Sedan and Limousine should not be used to tow a trailer.

CAUTION

Even when equipped with Trailering Package, certain precautions must be exercised.

1. Loaded trailer weight should not exceed 6,000 lbs.
2. Tongue weight should be approximately 10% of the loaded trailer weight.
3. A frame, side-rail mounted, load-equalizing hitch with sway control of sufficient capacity is required for trailers over 2,000 lbs. loaded weight.
4. Do not use axle-mounted hitches. They can cause damage to the axle housing, wheel bearings, wheels or tires.
5. Trailer brakes are required on trailers over 1,000 lbs. loaded weight.
6. Do not tap into the car's hydraulic brake system to couple with a trailer hydraulic brake system. Master cylinder fluid capacity may not be sufficient to operate both car and trailer brakes.
7. Whenever a trailer hitch is removed, be certain to have any mounting holes in the underbody properly sealed to prevent possible entry of exhaust fumes, dirt or water.

More frequent vehicle maintenance is required when a car is used for trailer towing. Recommendations are listed in the owner's manual.

TO ORDER

Specify Code R — "Trailering Package" on the order form (CAD 5600A). Production will not be delayed when this item is ordered. Do not specify the individual items of the Trailering Package on the order form.

Other Cadillac optional equipment that might be considered useful in local applications is:

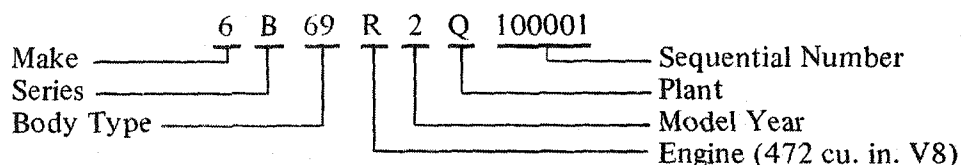
Automatic Level Control
Track Master
Right Side Remote Control Mirror

VEHICLE IDENTIFICATION

A new Vehicle Identification Number will be used for the 1972 model year. The major change is in the model designator portion. This change was made to allow for an engine code.

The example below explains the various codes of the VIN.

1972 VEHICLE IDENTIFICATION NUMBER EXAMPLE SIXTY SPECIAL BROUGHAM



The first four digits of the VIN are listed below with the corresponding model designators. The two engine codes and the plant codes are also shown.

VEHICLE IDENTIFICATION NUMBER 1972 MODEL YEAR

MODEL NAME	MODEL DESIGNATOR	VIN MODEL NUMBER
Calais Coupe	68247	6C47
Calais Sedan	68249	6C49
DeVille Coupe	68347	6D47
DeVille Sedan	68349	6D49
Sixty Special Brougham	68169	6B69
Seventy-Five Sedan	69723	6F23
Seventy-Five Limousine	69733	6F33
Eldorado Coupe	69347	6L47
Eldorado Convertible	69367	6L67
Commercial Chassis	69890	6Z90

Plant Codes

Q---Detroit
E---Linden

Engine Codes

472 cu. in. V8,---R
500 cu. in. V8,---S

FRONT SEAT

A bench type front seat with straight-across cushion and backrest is standard without option.

The trim style is identical to the Fleetwood Brougham.

AUXILIARY SEATS

Two forward-facing seats in the rear compartment provide additional seating for three persons. When not in use, these seats fold against the back of the front seat, exposing foot rests for the rear seat passengers.

Auxiliary seats are trimmed in upholstery material to match the rear seat.

FRONT SEAT ADJUSTERS

Two-way power adjuster is standard.

Six-way power adjuster is optional—code Y.

CLOTH UPHOLSTERY

Matador cloth, a richly texture ornate fabric with a matching leather bolster, is available in Black or Dark Blue.

Minuet, a delicate knit fabric in Pewter and Medium Beige, is available in the all cloth trim style. An embroidered design on the upper pillow of the back rest is used when all cloth Minuet interior is specified.

INSTRUMENT PANEL

A new instrument panel that sweeps from door to door provides an uncluttered look, while making all controls accessible to the driver. It is dark tone to match the upholstery chosen.

STEERING WHEEL

Steering wheel is color coordinated to match instrument panel.

DOORS

Vinyl covered doors match the upholstery color. Lower doors are in carpet material. Door inserts will be Rosewood grain surrounded by a bright bezel.

CENTER ARM REST

Both front and rear seats have folding center arm rests.

CARPETS

A fine yarn, all nylon, cut pile carpet called Trianon is used for floor covering in a color to match the upholstery.

HEADLINING

Ascot cloth, a soft plush all nylon material with a deep nap is used for the headlining in the Fleetwood Seventy-Five Sedan.

VINYL ROOF

A padded, cross-grain vinyl roof is available in seven colors.

LANDAU ROOF

The formal treatment of a fully padded vinyl roof with the rear window size reduced, rear quarter windows blocked in with Landau Bows can be special ordered.

Ordering details and optional treatments are on page 21.

STEREO RADIO

Stereo Radio is available with either front only or front and rear controls.

OPERA LAMPS

Opera Lamps enhance the formal appearance of the Fleetwood Seventy-Five, providing distinctive exterior identification. They are attached to the rear door pillar forward of the rear quarter window. These exterior lamps are recommended for all Seventy-Five cars, especially those with Landau Roof treatment.

AUTOMATIC CLIMATE CONTROL

Two independent air conditioning systems are standard in the Seventy-Five. The front unit is controlled by the driver and the rear controls are on the right side of the rear compartment concealed by a sliding Rosewood panel.

REAR WINDOW DE-FOGGER is standard on the Seventy-Five and is an integral part of this rear air conditioning unit.

RIGHT SIDE REMOTE CONTROL MIRROR

The standard right side rear view mirror is now adjustable from the driver's seat by a remote control cable.

SEAT AND SHOULDER BELTS

Seat Belts: six sets are standard—three in front and three in rear.

Shoulder Belts: standard in front.

Seat and Shoulder Belts will match carpet color.

FIREMIST COLORS

Six new premium charge Firemist colors are available, in addition to 15 regular option colors.

SPECIAL INTERIORS

Page 20 contains complete information regarding special interiors in the Fleetwood Seventy-Five Sedan.

FRONT SEAT

A bench type front seat with straight-across cushion and back rest is standard and is designed to accommodate the glass division.

FRONT COMPARTMENT

Limousine front compartment components will be Black. The front seat is Black leather in two-inch pleated trim style. Door inserts will be Rosewood.

SEAT ADJUSTERS

A two-way power adjuster is standard without option, because the front seat is secured to the center pillar to accommodate the division glass.

MAP LAMP

Located in the windshield header molding is a light, similar to rear reading lamps, for the driver's convenience.

INSTRUMENT PANEL

A new instrument panel that sweeps from door to door provides an uncluttered look, while making all controls accessible to the driver. Black instrument panel is standard.

DIVISION

A division at the center pillar area separates the front and rear compartment. A glass partition can be raised and lowered by controls on the right and left rear quarter panels in the rear compartment.

Rosewood inserts extend across the upper portion of the division, below the glass.

REAR COMPARTMENT

The following description of upholstery selections and trim style apply to the rear compartment only, auxiliary seats match rear seat upholstery.

Two cloth patterns are available. Matador, a richly textured ornate fabric in Black and Dark Blue, is combined with a matching leather bolster.

Minuet, a delicate knit fabric, is available in Pewter and Medium Beige all cloth trim style. An embroidered design on the upper pillow of the back rest is used when all cloth Minuet interior is specified.

Rosewood applique is used for door inserts and sliding panels in the rear quarters.

CENTER ARM REST

Rear seat only has folding center arm rest.

CARPETS

A fine yarn, all nylon, cut pile carpet called Trianon is used for floor covering in a color to match the upholstery.

Front compartment carpet will be Black.

HEADLINING

Ascot cloth, a soft plush all nylon material with a deep nap is used for the headlining in the Fleetwood Limousine.

VINYL ROOF

A padded, cross-grained, vinyl roof is available in seven colors.

LANDAU ROOF

The formal treatment of a fully padded vinyl roof with the rear window size reduced, rear quarter windows blocked in with Landau Bows can be special ordered.

Ordering details and optional treatments are on page 21.

STEREO RADIO

Stereo Radio is available with either front only or front and rear controls.

OPERA LAMPS

Opera Lamps enhance the formal appearance of the Fleetwood Seventy-Five, providing distinctive exterior identification. They are attached to the rear door pillar forward of the rear quarter window. These exterior lamps are recommended for all Seventy-Five cars, especially those with Landau Roof treatment.

AUTOMATIC CLIMATE CONTROL

Two independent air conditioning systems are standard in the Seventy-Five. The front unit is controlled by the driver and the rear controls are on the right side of the rear compartment concealed by a sliding Rosewood panel.

REAR WINDOW DE-FOGGER is standard on the Seventy-Five and is an integral part of this rear air conditioning unit.

RIGHT SIDE REMOTE CONTROL MIRROR

The standard right side rear view mirror is now adjustable from the driver's seat by a remote control cable.

SEAT AND SHOULDER BELTS

Seat Belts: six sets are standard—three in front and three in rear.

Shoulder Belts: standard in front.

Seat and Shoulder Belts will match carpet color.

FIREMIST COLORS

Six new premium charge Firemist colors are available, in addition to the 15 regular option colors.

SPECIAL INTERIORS

Page 20 contains complete information regarding special interiors in the Fleetwood Seventy-Five Limousine.

FLEETWOOD SEVENTY-FIVE

TWO BODY STYLES

Limousine

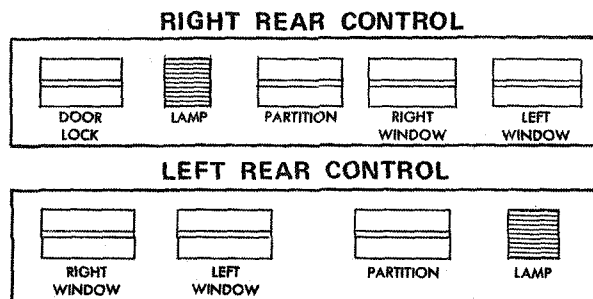
A black leather front compartment and a glass division make up the chauffeur's compartment.

Sedan

A cloth front compartment matches the rear seat upholstery and distinguishes the Sedan from the Limousine.

REAR CONTROLS

The following illustration shows the controls found on the rear quarter panels.



Partition control will be eliminated on the Seventy-Five Sedan.

Limousine Power Door Locks Control is located on the right rear quarter control panel. This rear control can lock and unlock all doors. The driver's control also will lock and unlock all doors.

Automatic Climate Control and radio controls are on the right rear control panel, concealed behind a sliding Rosewood panel. The Automatic Climate Control system for the rear compartment only, is regulated by these controls.

The rear radio controls, when ordered, will adjust volume and tune stations, overriding the front selector.

SPECIAL ORDERS

Although the Fleetwood Seventy-Five offers a rather complete trim selection, at times requests are received for a special interior.

Certain facts must be kept in mind when discussing any deviation from the standard interior in a Seventy-Five.

SPECIAL HANDLING

In addition to the basic cloth or leather, many other color-keyed components are required to produce a special color Fleetwood Seventy-Five interior. These range from injection molded vinyl to thread and buttons.

Most of these special parts must be machine-made on a one-time basis. This means that labor costs for setting up such machines to produce only one or two individual pieces becomes very costly.

PROCUREMENT OF SPECIAL PARTS

For example, Antique Dark Jade, which is not a standard Seventy-Five interior color will need a pair of air duct grill assemblies for installation in the headlining.

These are molded rubber and to make them in Jade, regular production must be interrupted, the machine cleaned, Jade compound mixed and two pieces molded.

After these are made, the machine must be re-cleaned for standard colors.

Other such parts that require special attention are windlace around each door, assist straps on the rear pillars, carpets, etc. These items are ordered on an individual basis and require additional time to procure.

EXTRA CHARGE

Because special color items require individual handling, the extra charge for a non-standard color interior will be in the \$1,800.00 to \$2,500.00 range and necessitate a lead time 90 to 120 days from receipt of order.

LIMOUSINE FRONT COMPARTMENT

If a color other than black is desired for the front compartment, specify the color and material desired. e.g., Dark Blue Leather Front Compartment.

This type of order also requires special handling and additional time, as front compartment components are made in black only.

CLOTH FRONT AND REAR

In a Seventy-Five Limousine S, the same cloth fabric used to upholster the rear compartment may be substituted for the Black leather on the front seat. See page 22 for complete ordering information.

LEATHER FRONT IN R

It is not practical to upholster the Sedan front compartment in leather, because the charge would be greater than the price difference between the Limousine and Sedan. And a leather upholstered Sedan (costing more than the Limousine) will not have the glass division.

CONCLUSION

If, notwithstanding these lead time and price considerations, a special color interior is to be ordered, please advise immediately the specifications wanted so that the ordering procedure may be started.

LANDAU ROOF

Special Request

DEALER CODE		STYLE NO.	
(A) 00000		69733	

ORDER NO.	COLOR	TOP	A/S	TRIM	SEAT ADJUSTER-PASS.	LICENSE FRAMES	SUNROOF	ORDER GROUPS HERE	WHITEWALL TIRES	AM-FM RADIO - 1-2-3-4	GLASS - SOFT RAY	DOOR EDGE GUARDS	AUTOMATIC CLIMATE CONTROL	SEAT ADJUSTER	DOOR LOCKS - PWR.	T. & T. STEERING WHEEL	TRUNK LOCK	FLOOR MATS	TRUNK MAT	TWILIGHT SENTINEL	DE-FOGGER	CRUISE CONTROL	HEADLAMP CONTROL	OPERA LAMPS	RIGHT SIDE REMOTE CONT. MIRROR
S 75	29 0			726	V	7	S	1 2 3 4 8 9	W	A	E	D	K	Y	M	Q	T	F	P	J	A	C	U	O	I
					V 6-WAY PASS. DUAL COMFORT AG2 (ONLY WHEN 6-WAY DRIVER'S ADJ. ORDERED)		1-STEREO W/TAPE 2-STEREO SIG. SEEK 3-AM-FM PUSH BUTTON 4-STEREO - REAR CONT.		UM2 UM2 U89 U87		6-WAY BENCH 6-WAY DRIVER'S DUAL COMFORT AG1					A42		Y		ORDER ONLY IF GROUPS 1, 2, 3 OR 4 NOT SPECIFIED.					

PLEASE REFER TO OPTIONAL SPECIFICATIONS BOOK FOR ADDITIONAL ORDERING INFORMATION.

SPECIAL FEATURES

TRIM	HEADLINING	SPECIAL EXTERIOR COLOR	PRODUCTION DATE
INSTRUMENT PANELS	LACES		FINANCE THROUGH
STEERING WHEEL	SEATS ONLY		G.M.A.C.
CARPETS	S.R. NO.		CASH
INSERTS			O.D.C.
BOLSTERS			

LANDAU ROOF-K	
UNDERSIGNED DEALER CERTIFIES THAT HE HAS CURRENT ARRANGEMENT WITH AN O.D.C. FINANCER AND THAT SETTLEMENT SHOULD BE MADE THROUGH SUCH O.D.C. FINANCER.	

LANDAU ROOF

An elegant, formal touch can be added to the Fleetwood "75" Sedan and Limousine by ordering a Landau Roof option. This treatment includes a padded vinyl cover, blocked in rear quarter windows, a reduced rear window and Landau Bows on the rear quarters.

TO ORDER

"O" for top code in the standard option area. Specify "Landau Roof K". The code letter that follows is the color of the Landau roof. Color codes are the same as those for vinyl roofs.

SMALL REAR WINDOW

Small trapezoid rear window size is approximately:

Width at top20"
Width at bottom22"
Height 8-3/4"

OPTIONS

Landau Roof features may be altered by specifying:

1. Omit Landau Bows or
2. Retain regular rear window size.

HEADLINING

Ascot Cloth headlining will be used on "75" Sedans and Limousines whenever Landau Roof is specified. Taffeta vinyl headlining is available in Black, Dk. Blue or Beige on request.

EXTERIOR ORNAMENTATION

The distinctive wreath and crest appears on each lower rear quarter panel. Opera Lamps, available at extra charge, provide an added decorative touch in the rear quarter areas.

CLOTH FRONT

Special Request

5-LICENSE FRAME & FILLER PLATE V50		Z-REAR SHOULDER BELTS AS4	
6-TWO LICENSE FRAMES V51		N-FRONT SHOULDER BELTS AS5	
7-FILLER PLATE VK1		H-FRONT & REAR	

SHIP TO CODE	
(B)	

DEALER CODE	STYLE NO.
(A) 00000	69733

ORDER NO.	COLOR	TOP	A/S	TRIM	V	SEAT ADJUSTER-PASS. 6-LICENSE FRAMES 6-FILLER PLATE	CA1	ORDER GROUPS HERE	003	WHITEWALL TIRES	AM-FM RADIO - 1-2-3-4	AD1	GLASS - SOFT RAY	B93	DOOR EDGE GUARDS	C61	AUTOMATIC CLIMATE CONTROL	SEAT ADJUSTER	AU3	DOOR LOCKS - PWR.	N37	STEERING WHEEL	A90	TRUNK LOCK	Y28	FLOOR MATS	B36	TRUNK MAT	T82	TWILIGHT SENTINEL	C49/ C50	DE-FOGGER	K30	CRUISE CONTROL	T80	HEADLAMP CONTROL	C93	OPERA LAMPS	RIGHT SIDE REMOTE CONT. MIRROR	DF3	
S 342	19	K		X				4 8 9																																	

V	6-WAY PASS. DUAL COMFORT AG2 (ONLY WHEN 6-WAY DRIVER'S ADJ. ORDERED)	1-STEREO W/TAPE 2-STEREO SIG. SEEK 3-AM-FM PUSH BUTTON 4-STEREO - REAR CONT.	UM2 UN2 U69 U87	6-WAY BENCH 6-WAY DRIVER'S DUAL COMFORT AG1	A42	Y	ORDER ONLY IF GROUPS 1, 2, 3 OR 4 NOT SPECIFIED.
---	---	---	--------------------------	--	-----	---	--

PLEASE REFER TO OPTIONAL SPECIFICATIONS BOOK FOR ADDITIONAL ORDERING INFORMATION.

SPECIAL FEATURES			
TRIM	HEADLINING	SPECIAL EXTERIOR COLOR	PRODUCTION DATE
726			
INSTRUMENT PANELS	LACES		FINANCE THROUGH
STEERING WHEEL	SEATS ONLY		G.M.A.C.
CARPETS	S.R. NO.		CASH
			O.D.C.
INSERTS			
BOLSTERS			

1972 NEW CAR ORDER	
CADILLAC MOTOR CAR DIVISION	
GENERAL MOTORS CORP., DETROIT, MICH. 48232	

UNDER SIGNED DEALER CERTIFIES THAT HE HAS CURRENT ARRANGEMENT WITH AN O.D.C. FINANCER AND THAT SETTLEMENT SHOULD BE MADE THROUGH SUCH O.D.C. FINANCER.	
--	--

5600A
U.S.A.
400M
E-71

DEALER
SIGNATURE

FOR COMPLETE CUSTOMER SATISFACTION ORDER COMPLETELY EQUIPPED CARS

CLOTH FRONT AND REAR

Cloth upholstery, as used in the rear compartment of the Limousine, may be substituted for the Black leather front seat.

TRIM STYLE

Two inch pleated trim style will be used similar to the leather.

FRONT COMPARTMENT

All components of the front compartment including doors, seats, instrument panel, steering wheel and carpets will be in color to match the rear compartment.

All special orders are at extra charge and require additional time to produce.

ORDER EXAMPLES

ILLUSTRATIONS

Pages 21 through 31 contain illustrations and descriptions of the most frequently ordered special features.

The bottom half of the wholesale Order Form (Cad. 5600A) is designed to accommodate special order requests.

Detailed instructions for completing this portion of the form are on page 24. Following the example illustrated will prove most helpful.

If the desired trim combination is not illustrated or any questions arise, the zone office will provide assistance.

If there is a possibility that a request written on an order form could be misinterpreted, a letter explaining the special features desired should be sent with the order.

SPECIAL FEATURES

Every effort will be made to accommodate requests for special features. However, because of certain component restrictions, some changes from standard production options cannot be made.

The following pre-fabricated components are not available in all colors for all body styles because they are exclusive to certain series: doors, pull straps, vacuum formed front seat backs, etc.

If a non-standard color leather interior is desired, the above components would have to be selected in a neutral color.

TRIM CODE

The code in special trim box determines color of the major interior components - doors, headlining, seats, carpets, steering wheel and instrument panel.

If these components are desired in another color, designate code in appropriate box on the order form.

BUTTONS - LACES

These items cannot be eliminated because, in addition to being decorative, buttons,

laces and pleats serve to tie down and retain the original shape of the upholstery.

PAST MODEL UPHOLSTERY

Only interiors in colors and fabrics currently in production can be furnished.

Past model fabrics or material supplied by a customer cannot be used.

LEATHER INTERIORS

Leather can be supplied in any number of colors; however, remaining interior components would have to be a standard production color.

When non-standard color leather is requested, Maximum Leather will be specified to cover a greater portion of the interior in a matching color.

This type of interior requires additional time and involves extra cost, since all parts are cut and sewn by hand.

LEATHER AND VINYL ROOF NOT IN CALAIS

Leather upholstery and vinyl roof are not available in the Calais Series.

TRIM STYLES NOT INTERCHANGEABLE

Each series has an exclusive trim style which cannot be substituted in other series.

SPECIAL EXTERIOR

Acrylic lacquers are used for exterior finishes. Almost any color can be matched in this material.

However, requests for an exterior with transparent pigments or pearlescent coatings cannot be supplied because of certain production techniques that do not allow for this type of custom paint work.

DOUBLE CHECK

Because special feature orders are sold cars and involve additional time and an extra charge, specifications should be double-checked to avoid errors.

SPECIAL ORDERS

Some features not offered in standard production are available on a special request basis. This special service is provided to satisfy the discriminating Cadillac customer and to assist in conquest sales. Orders requesting special features should not be used for promotional or speculative purposes.

MAIL IMMEDIATELY

As soon as specifications on a special order are finalized, the order should be submitted against a future allotment. Production of the parts necessary to complete the special order can be initiated, thus reducing the lead time.

TIME REQUIRED

Because special feature orders require procurement of non-standard parts, writing detailed production instructions and individual assembly, additional time is necessary to complete these operations. Also, only a limited number of special requests can be scheduled for production daily.

As a general rule, from the time the order is received at Central Office:

- 1) Special trim orders are completed in five to eight weeks, depending upon the type of interior requested.
- 2) Special acrylic lacquers require four weeks to produce the completed car.
- 3) Special equipment orders are built within three weeks.

Because each order is unique, it is extremely difficult to estimate the exact amount of time required.

Shipment time is in addition to the production time.

The time element must be clearly understood before a special request order is submitted. To avoid any misunderstanding, the customer should not be promised a specific delivery date, as many factors influence the time required to build and ship special feature orders.

Production of special orders is scheduled to start approximately 30 days after the start of production and these orders are scheduled on a "first-come, first-served" basis. The large number of orders received at the beginning of the model year creates a back-log that will add to the time required for production.

ACKNOWLEDGMENT

Based upon the information available, each special trim order is acknowledged with an estimated production date. A Xerox copy of the special trim order (CAD 5600A) with the estimated production date is sent to the Zone Office for forwarding to dealer. If this acknowledgment is not received within two weeks, an inquiry should be made as this might indicate that the order has been misdirected.

In an effort to keep the dealer and customer informed of the status of an order, a more comprehensive follow-up system has been inaugurated which will advise the zone office whenever a production estimate cannot be met and also give a revised date.

CARPETS

Special Request

DEALER CODE		STYLE NO.		SEAT ADJUST-PASS		LICENSE FRAMES		SUNROOF		ORDER GROUPS HERE		WHITEWALL TIRES		AM-FM RADIO - 1-2-3-4		GLASS - SOFT RAY		DOOR EDGE GUARDS		AUTOMATIC CLIMATE CONTROL		SEAT ADJUST		DOOR LOCKS - PWR.		T. & T. STEERING WHEEL		TRUNK LOCK		FLOOR MATS		TRUNK MAT		TWILIGHT SENTINEL		C4		CRUISE CONTROL		HEADLAMP CONTROL		OPERA LAMPS		RIGHT SIDE REMOTE CONT. MIRROR	
(A) 00000		68349		V		7		S		1-2 3-4 8 9		W		A		E		D		K		Y		M		Q		T		F		P		J		A		C		U		O		I	
ORDER NO.	COLOR	TOP	A/S	TRIM																																									
B 110	93	J		X							1 8 9																																		

V 6-WAY PASS. DUAL COMFORT AG2
 (ONLY WHEN 6-WAY DRIVER'S ADJ. ORDERED)

1-STEREO W/TAPE
 2-STEREO SIG. SEEK
 3-AM-FM PUSH BUTTON
 4-STEREO - REAR CONT.

6-WAY BENCH
 6-WAY DRIVER'S DUAL COMFORT AG1

Y

ORDER ONLY IF GROUPS 1, 2, 3 OR 4 NOT SPECIFIED.

PLEASE REFER TO OPTIONAL SPECIFICATIONS BOOK FOR ADDITIONAL ORDERING INFORMATION.

SPECIAL FEATURES

TRIM	HEADLINING	SPECIAL EXTERIOR COLOR	PRODUCTION DATE
352			
INSTRUMENT PANELS	LACES		
384			
STEERING WHEEL	SEATS ONLY		
384			
CARPETS	S.R. NO.		
384			
INSERTS			
BOLSTERS			

UNDERSIGNED DEALER CERTIFIES THAT HE HAS CURRENT ARRANGEMENT WITH AN O.D.C. FINANCER AND THAT SETTLEMENT SHOULD BE MADE THROUGH SUCH O.D.C. FINANCER.

5800A
U.S.A.
400M
5-71

1972 NEW CAR ORDER
CADILLAC MOTOR CAR DIVISION
 GENERAL MOTORS CORP., DETROIT, MICH. 48232

DEALER
SIGNATURE

FOR COMPLETE CUSTOMER SATISFACTION ORDER COMPLETELY EQUIPPED CARS

CARPET CHANGES

A variety of trim combinations can be achieved by changing the carpets, instrument panel and steering wheel color. The instrument panel and steering wheel color will match the carpets unless otherwise specified.

Changes in carpet colors are made to create a more harmonious combination with the exterior color.

The instrument panel color is an important consideration, because it appears as an extension of the hood.

It should match or complement the exterior and carpet color.

WHITE LEATHER

Carpets, Instrument Panels and Steering Wheels in colors other than Black may be ordered with White Leather. The order illustrates a White and Med. Maize combination.

STEERING WHEEL

The Steering Wheel is available in a variety of colors to match the Instrument Panel and Carpet.

All special orders are at extra charge and require additional time to produce.

SEATS ONLY WHITE LEATHER

Special Request

DEALER CODE 00000		STYLE NO. 68349		SEAT ADJUST V		LICENSE FRA 7		FILLER PLAT S		SUNROOF 1-2 3-4		↓ 8		9		WHITEWALL W		AM-FM RADIC A		GLASS - SOF E		DOOR EDGE C D		AUTOMATIC K		CLIMATE COF Y		SEAT ADJUS M		DOOR LOCKE Q		T. & T. T		STEERING WI F		TRUNK LOCK P		FLOOR MATS J		TRUNK MAT A		TWILIGHT SE C		DE-FOGGER U		CRUISE CONT O		HEADLAMP C I		OPERA LAMP R		RIGHT SIDE REMOTE CONT.	
ORDER NO. B 71	COLOR 90	TOP J	A/S X	TRIM V																																																	

V 6-WAY PASS. DUAL COMFORT AG2
(ONLY WHEN 6-WAY DRIVER'S ADJ. ORDERED)

1-STEREO W/TAPE* UM2
2-STEREO SIG. SEEK UN2
3-AM-FM PUSH BUTTON U69
4-STEREO - REAR CONT. U67

6-WAY BENCH A42
6-WAY DRIVER'S DUAL COMFORT AG1

Y ← ORDER ONLY IF GROUPS 1, 2, 3 OR 4 NOT SPECIFIED.

PLEASE REFER TO OPTIONAL SPECIFICATIONS BOOK FOR ADDITIONAL ORDERING INFORMATION.

SPECIAL FEATURES

TRIM	HEADLINING	SPECIAL EXTERIOR COLOR	PRODUCTION DATE
666			
INSTRUMENT PANELS	LACES		
STEERING WHEEL	SEATS ONLY		
	652		
CARPETS	S.R. NO.		
INSERTS			
BOLSTERS			

1972 NEW CAR ORDER
CADILLAC MOTOR CAR DIVISION
GENERAL MOTORS CORP., DETROIT, MICH. 48232

UNDERSIGNED DEALER CERTIFIES THAT HE HAS CURRENT ARRANGEMENT WITH AN O.D.C. FINANCER AND THAT SETTLEMENT SHOULD BE MADE THROUGH SUCH O.D.C. FINANCER.

5600A
U.S.A.
400M
E 71

DEALER
SIGNATURE

FOR COMPLETE CUSTOMER SATISFACTION ORDER COMPLETELY EQUIPPED CARS

TRIM CODES

Correct trim codes can be obtained from the charts on Pages 4 and 5. Note that the above sample calls for 666 basic trim which denotes a Dual Comfort Seat.

SEATS ONLY

The seats only in White leather with balance of interior in Blue (as illustrated above) may be ordered. Other colors may be specified for the doors, headlining, carpets and instrument panel when White leather is ordered.

HEADLINING

In closed cars, special consideration should be given to the headlining color, as White may be preferred. If so, specify 652 under Headlining. Other-

wise, headlining will correspond to the basic trim color.

TWO-TONE CONVERTIBLE

An attractive Convertible combination is one in which the interior components match the exterior with contrasting White seats.

LACES

Another option for consideration are the laces. These may be ordered in a dark tone for contrast on the seats.

EXTRA CHARGE

As a matter of information, the extra charge for a SEATS ONLY upholstery combination will be the same as a complete special leather upholstery interior.

All special orders are at extra charge and require additional time to produce.

TWO-TONE COMBINATIONS

Special Request

DEALER CODE (A) 00000		STYLE NO. 68347	
ORDER NO. J 231	COLOR 11	TOP K	TRIM X

V	6-WAY PASS. DUAL COMFORT (ONLY WHEN 6-WAY DRIVER'S ADJ. ORDERED)	AG2	1-STEREO W/TAPE 2-STEREO SIG. SEEK 3-AM-FM PUSH BUTTON 4-STEREO - REAR CONT.	UM2 UN2 U69 U67	6-WAY BENCH 6-WAY DRIVER'S DUAL COMFORT AG1	A42	Y
---	---	-----	---	--------------------------	--	-----	---

SEAT ADJUSTER - PASS.	LICENSE FRAMES	CA1	ORDER GROUPS HERE	003	WHITEWALL TIRES	AM-FM RADIO - 1-2-3-4	A01	GLASS - SOFT RAY	B93	DOOR EDGE GUARDS	C61	AUTOMATIC CLIMATE CONTROL	SEAT ADJUSTER	AU3	DOOR LOCKS - PWR.	N37	T. & T. STEERING WHEEL	A90	TRUNK LOCK	Y28	FLOOR MATS	B36	TRUNK MAT	T82	TWILIGHT SENTINEL	C49/C50	DE-FOGGER	K30	CRUISE CONTROL	T80	HEADLAMP CONTROL	C93	OPERA LAMPS	RIGHT SIDE REMOTE CONT. MIRROR	DF3
V	V	S	1 2 3 4 8 9	W	E	D	K	Y	M	Q	T	P	J	A	C	U	O	I																	

PLEASE REFER TO OPTIONAL SPECIFICATIONS BOOK FOR ADDITIONAL ORDERING INFORMATION.

SPECIAL FEATURES

TRIM	HEADLINING	SPECIAL EXTERIOR COLOR	PRODUCTION DATE
351			
INSTRUMENT PANELS	LACES		
STEERING WHEEL	SEATS ONLY		
CARPETS	S.R. NO.		
INSERTS			
BOLSTERS			
352			

FINANCE THROUGH	
G.M.A.C.	
CASH	
O.D.C.	

UNDERSIGNED DEALER CERTIFIES THAT HE HAS CURRENT ARRANGEMENT WITH AN O.D.C. FINANCER AND THAT SETTLEMENT SHOULD BE MADE THROUGH SUCH O.D.C. FINANCER.

5600A
U.S.A.
400M
E-71

1972 NEW CAR ORDER
CADILLAC MOTOR CAR DIVISION
GENERAL MOTORS CORP., DETROIT, MICH. 48232

DEALER
SIGNATURE

FOR COMPLETE CUSTOMER SATISFACTION ORDER COMPLETELY EQUIPPED CARS

BLACK AND WHITE

A two-tone interior may be created by specifying a contrasting bolster color. This provides a change from the one color effect of a standard interior.

On such combinations, the leather or vinyl "bolster area" of the seats, cushion skirt and facings of back rests will be in the color specified under bolster.

The doors, headlining, inserts, instrument panels and front seat back panel will be in the basic trim color. In the example shown, they would be in Black.

MORE CONTRAST

However, if more contrast should be wanted, the back of front seat back panel and seat wings may also be ordered in the bolster color. Order should be marked "Front Seat Back Panel Same as Bolster."

OTHER COMBINATIONS

In addition to an interior with the sharp contrast of White and a dark color, other attractive arrangements of compatible colors may be created by combining such shades as Dark Covert and Light Covert or Oxblood and White.

All special orders are at extra charge and require additional time to produce.

VINYL UPHOLSTERY

DEALER CODE		STYLE NO.		<i>Special Request</i>																									
(A) 00000.		68247																											
ORDER NO.	COLOR	TOP	A/S	TRIM	SEAT	GLASS	DOOR	CLIM.	SEAT	DOOR	T & STEE	TRUP	FLOC	TRUP	TWIL	DE FL	CRUI	HEAT	OPER	RIGHT	REMO								
G 71	90			X	V	GLASS	DOOR	CLIM.	SEAT	DOOR	T & STEE	TRUP	FLOC	TRUP	TWIL	DE FL	CRUI	HEAT	OPER	RIGHT	REMO								
V 6-WAY PASS. DUAL COMFORT AG2 (ONLY WHEN 6-WAY DRIVER'S ADJ. ORDERED)					1-STEREO W/TAPE 2-STEREO SIG. SEEK 3-AM-FM PUSH BUTTON 4-STEREO - REAR CONT.					UM2 UN2 U69 U67					6-WAY BENCH 6-WAY DRIVER'S DUAL COMFORT AG1					A42 Y					ORDER ONLY IF GROUPS 1, 2, 3 OR 4 NOT SPECIFIED.				

PLEASE REFER TO OPTIONAL SPECIFICATIONS BOOK FOR ADDITIONAL ORDERING INFORMATION.

SPECIAL FEATURES			
TRIM	HEADLINING	SPECIAL EXTERIOR COLOR	PRODUCTION DATE
266			
INSTRUMENT PANELS	LACES		FINANCE THROUGH
STEERING WHEEL	SEATS ONLY		G.M.A.C.
			CASH
CARPETS	S.R. NO.		O.D.C.
INSERTS			UNDERSIGNED DEALER CERTIFIES THAT HE HAS CURRENT ARRANGEMENT WITH AN O.D.C. FINANCER AND THAT SETTLEMENT SHOULD BE MADE THROUGH SUCH O.D.C. FINANCER.
BOLSTERS			

5600A
U.S.A.
400M
E-71

1972 NEW CAR ORDER
CADILLAC MOTOR CAR DIVISION
GENERAL MOTORS CORP., DETROIT, MICH. 48232

DEALER
SIGNATURE

FOR COMPLETE CUSTOMER SATISFACTION ORDER COMPLETELY EQUIPPED CARS

FOR CALAIS SERIES VINYL COLORS

CODES

White	252
Dk. Blue	266
Medium Aqua	268
Ant. Dk. Jade	271
Ant. Lt. Covert	283
Ant. Maize	284
Ant. Dk. Covert	286
Ant. Oxblood	289

These special request colors are in addition to Black - 251, and Ant. Saddle - 285, which are standard vinyl options at nominal extra charge.

WHITE VINYL

With White vinyl (code 252) the following will be Black:

1. Instrument Panel and Rear Shelf

2. Carpets
3. Steering Wheel
4. Seat Belts
5. Door Pulls
6. Back of Front Seat Back Panel (Coupe G will be White)

Other colors in place of Black may be ordered for these components. To order, specify the following in any standard Calais color:

Instrument Panel
Carpets
Steering Wheel

CARPETS

When a non-standard color is ordered, the carpets will be the all nylon, Trianon and Tyrol quality.

All special orders are at extra charge and require additional time to produce.

ALL CLOTH

Special Request

SHIP TO CODE (B)		DEALER CODE (A) 00000		STYLE NO. 68169																																																																
ORDER NO. P 200	COLOR 24	TOP J	A/S	TRIM X																																																																
V 6-WAY PASS. DUAL COMFORT AG2 (ONLY WHEN 6-WAY DRIVER'S ADJ. ORDERED)		1-STEREO W/TAPE UM2 2-STEREO SIG. SEEK UN2 3-AM-FM PUSH BUTTON U69 4-STEREO - REAR CONT. U67		6-WAY BENCH A42 6-WAY DRIVER'S DUAL COMFORT AG1																																																																
<table border="1"> <tr> <td>SEAT ADJUSTER-PASS.</td> <td>LICENSE FRAMES FILLER PLATE</td> <td>SUNROOF</td> <td>ORDER GROUPS HERE</td> <td>WHITEWALL TIRES</td> <td>AM-FM RADIO - 1-2-3-4</td> <td>GLASS - SOFT RAY</td> <td>DOOR EDGE GUARDS</td> <td>AUTOMATIC CLIMATE CONTROL</td> <td>SEAT ADJUSTER</td> <td>DOOR LOCKS - PWR.</td> <td>T. & T. STEERING WHEEL</td> <td>TRUNK LOCK</td> <td>FLOOR MATS</td> <td>TRUNK MAT</td> <td>TWILIGHT SENTINEL</td> <td>DE-FOGGER</td> <td>CRUISE CONTROL</td> <td>HEADLAMP CONTROL</td> <td>OPERA LAMPS</td> <td>RIGHT SIDE REMOTE CONT. MIRROR</td> </tr> <tr> <td>V</td> <td>7</td> <td>5</td> <td>1-2 3-4 8 9</td> <td>W</td> <td>▲</td> <td>F</td> <td>D</td> <td>K</td> <td>Y</td> <td>M</td> <td>Q</td> <td>T</td> <td>F</td> <td>P</td> <td>J</td> <td>A</td> <td>C</td> <td>U</td> <td>O</td> <td>I</td> </tr> <tr> <td></td> <td></td> <td></td> <td>1 8 9</td> <td></td> <td></td> <td></td> <td></td> <td></td> <td></td> <td></td> <td></td> <td></td> <td></td> <td></td> <td></td> <td></td> <td></td> <td></td> <td>0</td> <td></td> </tr> </table>						SEAT ADJUSTER-PASS.	LICENSE FRAMES FILLER PLATE	SUNROOF	ORDER GROUPS HERE	WHITEWALL TIRES	AM-FM RADIO - 1-2-3-4	GLASS - SOFT RAY	DOOR EDGE GUARDS	AUTOMATIC CLIMATE CONTROL	SEAT ADJUSTER	DOOR LOCKS - PWR.	T. & T. STEERING WHEEL	TRUNK LOCK	FLOOR MATS	TRUNK MAT	TWILIGHT SENTINEL	DE-FOGGER	CRUISE CONTROL	HEADLAMP CONTROL	OPERA LAMPS	RIGHT SIDE REMOTE CONT. MIRROR	V	7	5	1-2 3-4 8 9	W	▲	F	D	K	Y	M	Q	T	F	P	J	A	C	U	O	I				1 8 9																0	
SEAT ADJUSTER-PASS.	LICENSE FRAMES FILLER PLATE	SUNROOF	ORDER GROUPS HERE	WHITEWALL TIRES	AM-FM RADIO - 1-2-3-4	GLASS - SOFT RAY	DOOR EDGE GUARDS	AUTOMATIC CLIMATE CONTROL	SEAT ADJUSTER	DOOR LOCKS - PWR.	T. & T. STEERING WHEEL	TRUNK LOCK	FLOOR MATS	TRUNK MAT	TWILIGHT SENTINEL	DE-FOGGER	CRUISE CONTROL	HEADLAMP CONTROL	OPERA LAMPS	RIGHT SIDE REMOTE CONT. MIRROR																																																
V	7	5	1-2 3-4 8 9	W	▲	F	D	K	Y	M	Q	T	F	P	J	A	C	U	O	I																																																
			1 8 9																0																																																	

PLEASE REFER TO OPTIONAL SPECIFICATIONS BOOK FOR ADDITIONAL ORDERING INFORMATION.

SPECIAL FEATURES			PRODUCTION DATE
TRIM 026	HEADLINING	SPECIAL EXTERIOR COLOR	
INSTRUMENT PANELS	LACES		
STEERING WHEEL	SEATS ONLY		
CARPETS	S.R. NO.		
INSERTS			
BOLSTERS			
ALL CLOTH			FINANCE THROUGH G.M.A.C. CASH O.D.C. UNDERSIGNED DEALER CERTIFIES THAT HE HAS CURRENT ARRANGEMENT WITH AN O.D.C. FINANCER AND THAT SETTLEMENT SHOULD BE MADE THROUGH SUCH O.D.C. FINANCER.

5600A
U.S.A.
400M
5-71

1972 NEW CAR ORDER
CADILLAC MOTOR CAR DIVISION
 GENERAL MOTORS CORP., DETROIT, MICH. 48232

DEALER
SIGNATURE

FOR COMPLETE CUSTOMER SATISFACTION ORDER COMPLETELY EQUIPPED CARS

ALL CLOTH

Areas that are normally in leather or vinyl can be specified in "all-cloth" by completing the order as illustrated above.

PATTERN DISCREPANCY

When "All-Cloth" trim is requested, a discrepancy of pattern may occur because each piece is cut individually, by hand.

TRIM STYLE

Trim styles are not interchangeable between body styles. If an "All-Cloth" trim is requested, the trim style of body style ordered will be used.

PIQUE STITCHING

The Pique stitching on the upper pillow of the back rest is available only with all cloth Minuet trim.

All special orders are at extra charge and require additional time to produce.

MAXIMUM LEATHER

Special Request

SHIP TO CODE (B)		DEALER CODE (A) 00000		STYLE NO. 68349																																							
ORDER NO. B 51	COLOR 34	TOP J	A/S	TRIM X																																							
<table border="1"> <tr> <td>SEAT ADJUSTER - PASS.</td> <td>SEAT ADJUSTER - DRIVER</td> <td>WHITEWALL TIRES</td> <td>AM-FM RADIO - 1-2-3-4</td> <td>GLASS - SOFT RAY</td> <td>DOOR EDGE GUARDS</td> <td>AUTOMATIC CLIMATE CONTROL</td> <td>SEAT ADJUSTER</td> <td>DOOR LOCKS - PWR.</td> <td>T & T STEERING WHEEL</td> <td>TRUNK LOCK</td> <td>FLOOR MATS</td> <td>TRUNK MAT</td> <td>TWILIGHT SENTINEL</td> <td>DE-FOGGER</td> <td>CRUISE CONTROL</td> <td>HEADLAMP CONTROL</td> <td>OPERA LAMPS</td> <td>RIGHT SIDE REMOTE CONT. MIRROR</td> </tr> <tr> <td>V</td> <td>6</td> <td>1-2-3-4</td> <td>W</td> <td>E</td> <td>D</td> <td>K</td> <td>Y</td> <td>M</td> <td>Q</td> <td>T</td> <td>F</td> <td>P</td> <td>J</td> <td>A</td> <td>C</td> <td>U</td> <td>O</td> <td>I</td> </tr> </table>						SEAT ADJUSTER - PASS.	SEAT ADJUSTER - DRIVER	WHITEWALL TIRES	AM-FM RADIO - 1-2-3-4	GLASS - SOFT RAY	DOOR EDGE GUARDS	AUTOMATIC CLIMATE CONTROL	SEAT ADJUSTER	DOOR LOCKS - PWR.	T & T STEERING WHEEL	TRUNK LOCK	FLOOR MATS	TRUNK MAT	TWILIGHT SENTINEL	DE-FOGGER	CRUISE CONTROL	HEADLAMP CONTROL	OPERA LAMPS	RIGHT SIDE REMOTE CONT. MIRROR	V	6	1-2-3-4	W	E	D	K	Y	M	Q	T	F	P	J	A	C	U	O	I
SEAT ADJUSTER - PASS.	SEAT ADJUSTER - DRIVER	WHITEWALL TIRES	AM-FM RADIO - 1-2-3-4	GLASS - SOFT RAY	DOOR EDGE GUARDS	AUTOMATIC CLIMATE CONTROL	SEAT ADJUSTER	DOOR LOCKS - PWR.	T & T STEERING WHEEL	TRUNK LOCK	FLOOR MATS	TRUNK MAT	TWILIGHT SENTINEL	DE-FOGGER	CRUISE CONTROL	HEADLAMP CONTROL	OPERA LAMPS	RIGHT SIDE REMOTE CONT. MIRROR																									
V	6	1-2-3-4	W	E	D	K	Y	M	Q	T	F	P	J	A	C	U	O	I																									
<table border="1"> <tr> <td>V</td> <td>8-WAY PASS. DUAL COMFORT (ONLY WHEN 6-WAY DRIVER'S ADJ. ORDERED)</td> <td>1-STEREO W/TAPE 2-STEREO SIG. SEEK 3-AM-FM PUSH BUTTON 4-STEREO - REAR CONT.</td> <td>UM2 UN2 U66 U67</td> <td>6-WAY BENCH 6-WAY DRIVER'S DUAL COMFORT AG1</td> <td>A42</td> <td>Y</td> <td>ORDER ONLY IF GROUPS 1, 2, 3 OR 4 NOT SPECIFIED.</td> </tr> </table>						V	8-WAY PASS. DUAL COMFORT (ONLY WHEN 6-WAY DRIVER'S ADJ. ORDERED)	1-STEREO W/TAPE 2-STEREO SIG. SEEK 3-AM-FM PUSH BUTTON 4-STEREO - REAR CONT.	UM2 UN2 U66 U67	6-WAY BENCH 6-WAY DRIVER'S DUAL COMFORT AG1	A42	Y	ORDER ONLY IF GROUPS 1, 2, 3 OR 4 NOT SPECIFIED.																														
V	8-WAY PASS. DUAL COMFORT (ONLY WHEN 6-WAY DRIVER'S ADJ. ORDERED)	1-STEREO W/TAPE 2-STEREO SIG. SEEK 3-AM-FM PUSH BUTTON 4-STEREO - REAR CONT.	UM2 UN2 U66 U67	6-WAY BENCH 6-WAY DRIVER'S DUAL COMFORT AG1	A42	Y	ORDER ONLY IF GROUPS 1, 2, 3 OR 4 NOT SPECIFIED.																																				

PLEASE REFER TO OPTIONAL SPECIFICATIONS BOOK FOR ADDITIONAL ORDERING INFORMATION.

SPECIAL FEATURES			PRODUCTION DATE
TRIM	HEADLINING	SPECIAL EXTERIOR COLOR	
368			
INSTRUMENT PANELS	LACES		
STEERING WHEEL	SEATS ONLY		
CARPETS	S.R. NO.		
INSERTS			
BOLSTERS			
MAXIMUM LEATHER			FINANCE THROUGH
			G.M.A.C.
			CASH
			O.D.C.
			UNDERSIGNED DEALER CERTIFIES THAT HE HAS CURRENT ARRANGEMENT WITH AN O.D.C. FINANCER AND THAT SETTLEMENT SHOULD BE MADE THROUGH SUCH O.D.C. FINANCER.

MAXIMUM LEATHER

Leather trim implies the use of vinyl for certain areas. A large area such as the seat skirt, is made of vinyl because a cowhide would not be large enough to make up this piece.

"Maximum Leather" may be ordered so that every possible component will be in leather. The areas that will be leather when "Maximum Leather" is ordered are: the seat skirts, seat facings, side of center arm rest and the back of front seat back insert.

EXTRA CHARGE

The extra charge for "Maximum Leather" is more than the suggested retail price of special leather because of the hand cutting, sewing and additional material required.

SPECIAL LEATHER COLORS

The order illustration shows Med. Aqua Leather on a Sedan De Ville. Leather colors not offered as a standard production option can be special ordered.

COUPE TYPE FRONT SEAT

All leather trimmed De Ville cars will have a notch back, Coupe type front seat. In a Sedan, the individual backrests will be anchored so they do not fold forward.

A Sedan type front seat, eliminating the coupe type notch, with leather trim is available at extra charge.

DUAL COMFORT SEAT

Dual Comfort Seat, with a notch back, can be ordered with Special Leather.

All special orders are at extra charge and require additional time to produce.

SPECIAL EXTERIOR COLORS

Special Request

SHIP TO CODE (B)		DEALER CODE (A)		STYLE NO.																																																												
ORDER NO.	COLOR	TOP	A/S	TRIM																																																												
	00																																																															
V 6-WAY PASS. DUAL COMFORT AG2 (ONLY WHEN 6-WAY DRIVER'S ADJ. ORDERED)		1-STEREO W/TAPE 2-STEREO SIG. SEEK 3-AM-FM PUSH BUTTON 4-STEREO - REAR CONT.		UM2 UN2 U68 U67																																																												
<table border="1"> <tr> <td>SEAT ADJUSTER-PASS.</td> <td>LICENSE FRAMES FILLER PLATE</td> <td>CA1</td> <td>ORDER GROUPS HERE</td> <td>Q03</td> <td>WHITEWALL TIRES</td> <td>AM-FM RADIO - 12-3-4</td> <td>A01</td> <td>GLASS - SOFT RAY</td> <td>B83</td> <td>DOOR EDGE GUARDS</td> <td>C61</td> <td>AUTOMATIC CLIMATE CONTROL</td> <td>SEAT ADJUSTER</td> <td>DOOR LOCKS - PWR.</td> <td>AU3</td> <td>T. & T. STEERING WHEEL</td> <td>N37</td> <td>TRUNK LOCK</td> <td>A90</td> <td>FLOOR MATS</td> <td>Y28</td> <td>TRUNK MAT</td> <td>B36</td> <td>TWILIGHT SENTINEL</td> <td>T82</td> <td>DEFOGGER</td> <td>C49/ C50</td> <td>K30</td> <td>CRUISE CONTROL</td> <td>T80</td> <td>HEAD LAMP CONTROL</td> <td>Q33</td> <td>OPERA LAMPS</td> <td>RIGHT SIDE REMOTE CONT. MIRROR</td> <td>DF3</td> </tr> <tr> <td>V</td> <td>7</td> <td>S</td> <td>1-2 3-4</td> <td>8</td> <td>9</td> <td>W</td> <td>A</td> <td>E</td> <td>D</td> <td>K</td> <td>Y</td> <td>M</td> <td>Q</td> <td>T</td> <td>F</td> <td>P</td> <td>J</td> <td>A</td> <td>C</td> <td>U</td> <td>O</td> <td>I</td> </tr> </table>						SEAT ADJUSTER-PASS.	LICENSE FRAMES FILLER PLATE	CA1	ORDER GROUPS HERE	Q03	WHITEWALL TIRES	AM-FM RADIO - 12-3-4	A01	GLASS - SOFT RAY	B83	DOOR EDGE GUARDS	C61	AUTOMATIC CLIMATE CONTROL	SEAT ADJUSTER	DOOR LOCKS - PWR.	AU3	T. & T. STEERING WHEEL	N37	TRUNK LOCK	A90	FLOOR MATS	Y28	TRUNK MAT	B36	TWILIGHT SENTINEL	T82	DEFOGGER	C49/ C50	K30	CRUISE CONTROL	T80	HEAD LAMP CONTROL	Q33	OPERA LAMPS	RIGHT SIDE REMOTE CONT. MIRROR	DF3	V	7	S	1-2 3-4	8	9	W	A	E	D	K	Y	M	Q	T	F	P	J	A	C	U	O	I
SEAT ADJUSTER-PASS.	LICENSE FRAMES FILLER PLATE	CA1	ORDER GROUPS HERE	Q03	WHITEWALL TIRES	AM-FM RADIO - 12-3-4	A01	GLASS - SOFT RAY	B83	DOOR EDGE GUARDS	C61	AUTOMATIC CLIMATE CONTROL	SEAT ADJUSTER	DOOR LOCKS - PWR.	AU3	T. & T. STEERING WHEEL	N37	TRUNK LOCK	A90	FLOOR MATS	Y28	TRUNK MAT	B36	TWILIGHT SENTINEL	T82	DEFOGGER	C49/ C50	K30	CRUISE CONTROL	T80	HEAD LAMP CONTROL	Q33	OPERA LAMPS	RIGHT SIDE REMOTE CONT. MIRROR	DF3																													
V	7	S	1-2 3-4	8	9	W	A	E	D	K	Y	M	Q	T	F	P	J	A	C	U	O	I																																										
PLEASE REFER TO OPTIONAL SPECIFICATIONS BOOK FOR ADDITIONAL ORDERING INFORMATION.																																																																

SPECIAL FEATURES		
TRIM	HEADLINING	SPECIAL EXTERIOR COLOR
INSTRUMENT PANELS	LACES	1956 MOUNTAIN LAUREL
STEERING WHEEL	SEATS ONLY	
CARPETS	S.R. NO.	
INSERTS		
BOLSTERS		
		PRODUCTION DATE FINANCE THROUGH G.M.A.C. CASH O.D.C. UNDERSIGNED DEALER CERTIFIES THAT HE HAS CURRENT ARRANGEMENT WITH AN O.D.C. FINANCER AND THAT SETTLEMENT SHOULD BE MADE THROUGH SUCH O.D.C. FINANCER.

NON-STANDARD COLORS

Any past model or non-standard exterior color can be supplied on special order at extra charge.

To order, type 00 in COLOR space which denotes that color is not a standard option.

In space captioned SPECIAL EXTERIOR COLOR, describe color by name and model year.

Allow four to five weeks for shipment of any special color.

HIGH GLOSS ACRYLIC MATERIALS

A previous model year exterior color may have been formulated with now obsolete pigments. The newer chemicals have improved color retention and durability. However, they could produce a variance in appearance between the new and old finishes.

This is a matter of information that may be of special interest to fleet owners who add new cars in the original fleet colors and have noticed a difference in their older and newer vehicles.

All special orders are at extra charge and require additional time to produce.

CUSTOMER WILL CALL

CWC

A Cadillac dealer can make arrangements for a retail customer to take delivery of a car at the factory. Such a delivery is designated as a Customer Will Call – CWC.

Factory delivery is available at Detroit only.

DELIVERY DATE

Reservations for a delivery date should be made, well in advance, with the Zone Office. Zone Office will confirm this date to the dealer.

PROCEDURE

When the confirmed "CWC" date is received, a copy of the order form (CAD 5600A) should be sent to the Zone Office. The confirmed delivery date should be entered and the CUSTOMER'S NAME AND ADDRESS shown. "CWC" must appear at the top of the form and in the "SHIP TO" space.

ACKNOWLEDGEMENT FORM (CAD 3864)

An acknowledgment of the request for "CWC" delivery is mailed shortly after the order is received at Central Office.

The acknowledgment form (CAD 3864) will show the complete specifications of the order, customer's name and address and the confirmed date of delivery.

This form should be carefully checked and any discrepancies reported to your Zone Office.

RELEASE FORMS (CAD 3868)

Enclosed with the Acknowledgment form will be a set of Release forms that contain the specifications and customer's name.

Instructions for completing the necessary release forms are on the acknowledgment form (CAD 3864).

The blue copy of the release form is to be signed by the customer in the dealer's presence and mailed (in the envelope provided) as soon as possible. Customer is to present pink copy at time of delivery. White copy to be retained by dealer.

The customer will be required to countersign the blue copy at time of delivery.

THIRD PARTY

If a third party is to take delivery, the reverse side of the release must be completed by the purchaser and signed by individual accepting delivery. This release must be presented by third party in order to secure delivery of car.

LICENSE PLATES

License plates should be Air Mailed-Special Delivery, using the label provided so that they arrive prior to "CWC" date.

If customer will bring license plates, this should be indicated on the blue release form.

VEHICLE IDENTIFICATION NUMBER

A telegram containing the Vehicle Identification number will be sent to the dealer as soon as it is available.

COURTESY DELIVERIES

CONSENT

Prior to requesting shipment of a new car to another Cadillac dealer in the United States for "Courtesy Delivery," consent in writing must be obtained by the selling dealer, from the delivering dealer. Specific consent is to be obtained for each car involved. An agreement for one or the first car will not constitute blanket courtesy delivery approval.

After such permission is granted, complete arrangements should be made with the zone office and instructions furnished to the delivering dealer including the following:

TO ZONE OFFICE

1. On New Car Order form 5600A state that approval of dealer to whom shipment is to be made has been secured. Furnish name of individual giving such approval.
2. In spaces captioned (B) SHIP TO CODE insert correct dealer code number, dealer name and city. Obtain correct code from delivering dealer or zone office.

TO DELIVERING DEALER

Furnish in writing to the dealer who is to make the courtesy delivery the following minimum information:

- a) Car Specifications: A copy of the 5600A Order Form or complete specifications.
- b) Customer Contact: Customer name and address — both home and business — also telephone number if available. If this is not available, advise where customer can be reached.
- c) Delivery Date: Estimate of customer arrival or delivery date.

- d) Service Instructions: List of any extra equipment to be installed or special services performed prior to delivery.
- e) Financial: All financial transactions are to be directly between the participating dealers and not through third parties. It shall be the selling dealer's responsibility to remit to the delivering dealer the suggested delivery and handling charges, plus any other expenses which may be incurred in the process of making the courtesy delivery.
- f) Collections: Any money to be received from the customer is to be for the account of the selling dealer or delivering dealer and not any other parties.
- g) Registration: Advise if license plates will be furnished or are they to be secured by delivering dealer. Such arrangements to be made in advance whenever possible to prevent delay when the car is ready.
- h) Sales Tax: Clarify the sales tax responsibilities according to the various state laws that may be involved. Establish a clear understanding as to who will make such payment.
- i) Insurance: Customer should be reminded of insurance coverage.
- j) Storage Charges: In case unexpected delays are encountered in delivery, storage charges may be incurred that will be the obligation of the selling dealer.

Acceptance of a car for delivery on a courtesy basis is an accommodation that entails responsibilities which the selling dealer should faithfully discharge in order to facilitate and expedite the registration, handling and "courtesy" delivery of the car.

CALIFORNIA COURTESY DELIVERIES

Courtesy delivery of an automobile by any California dealer for the accommodation of another dealer is subject to a tax under Section 6007 of the California Sales and Use Tax Law.

ATTENTION CALIFORNIA DEALERS

A procedure approved by the California State Board of Equalization for the reporting of such tax liability by California auto dealers follows:

"The tax should be computed, collected and remitted in precisely the same manner that governs the California dealers' own local sales and deliveries. The tax base is the actual selling price as reported to the delivering dealer by the selling dealer or as revealed in an invoice submitted by the customer (plus the selling price of any accessories added by the delivering dealer). If the actual selling price is unavailable, it should be assumed to be the list price. The California State Board of Equalization auditors, when examining dealers sales and use tax returns, will look for the inclusion of courtesy deliveries on the above basis."

CALIFORNIA TAXES

Cars shipped to the State of California by Cadillac Motor Car Division for delivery in California, as a courtesy to dealers elsewhere, are subject to California Sales Tax and in certain localities additional local taxes. This should be carefully explained to the customer, as it will apply in addition to any other taxes that may have been paid to another state or local government agency. The fact that the car will be licensed in another state or that other state and local taxes are levied will not exempt the payment of California taxes.

CUSTOMER NAME AND ADDRESS

When Cadillac Motor Car Division is requested to make such courtesy shipment, the ordering outlet must furnish with the New Car Order the retail purchaser's name and address, as the Manufacturer is required to report such information to the California Bureau of Motor Vehicles.

5600A INSTRUCTIONS

5600A
U.S.A.
400M
5-71

CADILLAC MOTOR CAR DIVISION
GENERAL MOTORS CORPORATION
MAIL ORIGINAL TO YOUR ZONE OFFICE
1972 NEW CAR ORDER

X1264

①	CUSTOMER ORDER DATE 11-1-71	DEALER ORDER DATE 11-5-71	ALLOT. MONTH December	②												
	CHARGE TO DEALER AT: CITY (A) Hometown STATE U.S.A.															
	SHIP TO: (LEAVE BLANK IF SAME)															
④	(B)	CUSTOMER WILL CALL CWC		⑤												
	DATE 1-10-72															
<table border="1" style="width: 100%; border-collapse: collapse;"> <tr> <th style="width: 50%;">ORDER</th> <th style="width: 50%;">STATUS</th> </tr> <tr> <td> <table border="1" style="width: 100%; border-collapse: collapse;"> <tr> <td style="width: 25%;">SOLD-S</td> <td style="width: 25%;">STOCK-U</td> <td style="width: 25%;">RENTAL & LEASING -R</td> <td style="width: 25%;">DEMO-D</td> </tr> <tr> <td style="text-align: center;">S</td> <td></td> <td></td> <td></td> </tr> </table> </td> <td></td> </tr> </table>					ORDER	STATUS	<table border="1" style="width: 100%; border-collapse: collapse;"> <tr> <td style="width: 25%;">SOLD-S</td> <td style="width: 25%;">STOCK-U</td> <td style="width: 25%;">RENTAL & LEASING -R</td> <td style="width: 25%;">DEMO-D</td> </tr> <tr> <td style="text-align: center;">S</td> <td></td> <td></td> <td></td> </tr> </table>	SOLD-S	STOCK-U	RENTAL & LEASING -R	DEMO-D	S				
ORDER	STATUS															
<table border="1" style="width: 100%; border-collapse: collapse;"> <tr> <td style="width: 25%;">SOLD-S</td> <td style="width: 25%;">STOCK-U</td> <td style="width: 25%;">RENTAL & LEASING -R</td> <td style="width: 25%;">DEMO-D</td> </tr> <tr> <td style="text-align: center;">S</td> <td></td> <td></td> <td></td> </tr> </table>	SOLD-S	STOCK-U	RENTAL & LEASING -R	DEMO-D	S											
SOLD-S	STOCK-U	RENTAL & LEASING -R	DEMO-D													
S																
⑥	PURCHASER Mr. M. Clark															

This portion of the order form identifies the selling and delivery dealers.

- ① Two dates are necessary: date customer places the order and date order is sent to the zone. The allotment month name (not number) against which the order will apply.
- ② Vehicle Identification Number is assigned when car is in final stages of production. Enter number from shipment information for permanent record.
- ③ Ordering dealer's city and state; if there is more than one dealer in a city, insert an additional reference.
- ④ If Courtesy Delivery, indicate city and state of delivering dealer.
- ⑤ Enter CWC if delivery is to be at the factory in Detroit and the Customer Will Call date as confirmed by the zone office.
- ⑥ Enter an order status code and, if sold, indicate purchaser's name.

⑦	<table border="1" style="width: 100%; border-collapse: collapse;"> <tr> <th style="width: 50%;">SHIP TO CODE</th> </tr> <tr> <td>(B) 00000</td> </tr> </table>	SHIP TO CODE	(B) 00000								
SHIP TO CODE											
(B) 00000											
⑧	<table border="1" style="width: 100%; border-collapse: collapse;"> <tr> <th style="width: 50%;">DEALER CODE</th> <th style="width: 50%;">STYLE NO.</th> </tr> <tr> <td>(A) 00000</td> <td>68347</td> </tr> </table>	DEALER CODE	STYLE NO.	(A) 00000	68347						
DEALER CODE	STYLE NO.										
(A) 00000	68347										
⑨	<table border="1" style="width: 100%; border-collapse: collapse;"> <tr> <th style="width: 25%;">ORDER NO.</th> <th style="width: 10%;">COLOR</th> <th style="width: 10%;">TOP</th> <th style="width: 10%;">A/S</th> <th style="width: 45%;">TRIM</th> </tr> <tr> <td>J 100</td> <td></td> <td></td> <td></td> <td></td> </tr> </table>	ORDER NO.	COLOR	TOP	A/S	TRIM	J 100				
ORDER NO.	COLOR	TOP	A/S	TRIM							
J 100											

- ⑦ Five-digit code of delivering dealer if other than selling dealer; CWC if factory delivery.
- ⑧ Five-digit code of selling dealer. Five-digit body style code.
- ⑨ Order number is composed of body style alpha code, followed by sequential number of dealer's orders from 1. e.g., J 1, B 2, etc.

SPECIAL FEATURES 5600A

SHIP TO CODE (B)		DEALER CODE (A)		STYLE NO.	
ORDER NO.	COLOR	TOP A/S	TRIM		
1			X		

V	6-WAY PASS. DUAL COMFORT AG2 (ONLY WHEN 6-WAY DRIVER'S ADJ. ORDERED)	1-STEREO W/TAPE 2-STEREO SIG. SEEK 3-AM-FM PUSH BUTTON 4-STEREO - REAR CONT.	UM2 UN2 U89 U87	6-WAY BENCH 6-WAY DRIVER'S DUAL COMFORT AG1	A42	Y	ORDER ONLY IF GROUPS 1, 2, 3 OR 4 NOT SPECIFIED.
---	---	---	--------------------------	--	-----	---	--

SEAT ADJUSTER - PASS.	LICENSE FRAMES FILLER PLATE	CA1	ORDER GROUPS HERE	WHITEWALL TIRES	Q03	AM-FM RADIO - 1-2-3-4	A01	GLASS - SOFT RAY	B93	DOOR EDGE GUARDS	C61	AUTOMATIC CLIMATE CONTROL	SEAT ADJUSTER	DOOR LOCKS - PWR.	AU3	T. & T. STEERING WHEEL	N37	TRUNK LOCK	A90	FLOOR MATS	Y28	TRUNK MAT	B36	TWILIGHT SENTINEL	T82	DE-FOGGER	C49 / C50	K30	CRUISE CONTROL	T80	HEADLAMP CONTROL	C93	OPERA LAMPS	RIGHT SIDE REMOTE CONT. MIRROR	DF3
V	7	S	1-2 3-4	8	9	W	A	D	K	Y	M	Q	T	F	P	J	A	C	U	O	I														

PLEASE REFER TO OPTIONAL SPECIFICATIONS BOOK FOR ADDITIONAL ORDERING INFORMATION.

SPECIAL FEATURES			PRODUCTION DATE
TRIM	HEADLINING	SPECIAL EXTERIOR COLOR	
2	5	8	10
INSTRUMENT PANELS	LACES		FINANCE THROUGH
3	6		G.M.A.C.
STEERING WHEEL	SEATS ONLY		CASH
CARPETS	S.R. NO.		O.D.C.
4	7	9	UNDERSIGNED DEALER CERTIFIES THAT HE HAS CURRENT ARRANGEMENT WITH AN O.D.C. FINANCER AND THAT SETTLEMENT SHOULD BE MADE THROUGH SUCH O.D.C. FINANCER.
INSERTS			
BOLSTERS			

Special Features are described in this portion of the order form.

① For special trim enter X only to the right of TRIM box. Leave trim code blank.

② Enter trim code desired. This code determines the color and material of all interior components except those specified individually.

③ INSTRUMENT PANEL, STEERING WHEEL and CARPET will be the same color as trim code unless otherwise specified.

④ INSERTS are the basic seat areas of the cushion and back rest.

BOLSTERS are the center section of the seat and also include seat skirt facings.

Enter codes here if these items are to be different from the basic trim, Item 2.

⑤ HEADLINING matches basic trim color and LACES will match the bolster color unless otherwise specified.

⑥ SEATS ONLY - one color for the Seats Only with remainder of interior in a contrasting color may be specified.

Trim code in Item 2 will determine the color of the Instrument Panel, Steering Wheel, Carpet, Doors and Headlining. Refer to page 26 for order example.

⑦ The S. R. NO. is the invoicing code used for Special Request items. Leave Blank.

⑧ Identify special exterior color by name and model year. i.e., 1968 Kashmir Ivory. See page 31 for Order Example.

⑨ Special Instructions - only information not covered in the above sections can be entered here.

⑩ PRODUCTION DATE (estimate) furnished by Central Office.



Provided the car has
production, the replacemen

AVOID VERBAL INSULTS

A telephone call to stop that is to be replaced is

Correctly typing a rep dealer's office insures the

SUMMARY

1. Telephone to hold order.
2. Type a replacement.

- Mr. Mall.

ORDER INFORMATION

CUSTOMER ORDER DATE

Customer Order Date is the date the order is accepted by a Cadillac dealer.

To determine the amount of time required for Cadillac to complete an order for shipment, the CUSTOMER ORDER DATE must be entered on every order form (CAD 5600A).

DEALER ORDER DATE

When an order is placed with a Cadillac zone office, the DEALER ORDER DATE should be entered.

Unless the order is mailed by the dealer to the zone office the same day it is written, the Customer Order Date and the Dealer Order Date will not coincide. Time lapse between these two dates will indicate the number of days before a dealer can submit the order to the zone office.

VEHICLE IDENTIFICATION NUMBER

A space has been allotted for the VI number on the 5600A order form. This information may be acquired from the daily zone traffic report.

SHIPMENT DATE

Shipment date will be recorded by Cadillac, and when compared with Customer Order Date and Dealer Order Date, will reveal the time necessary to complete the ordering-production cycle.

ORDER STATUS

Each new car order form (CAD 5600A) requires that a code be entered to indicate the status of the order.

Codes to be used:

Sold	S	Rental & Leasing	R
Stock	U	Demo	D

Sold orders will receive scheduling preference, when there is a choice between a sold and stock order.

PREFERENCE LIST

In addition to the above automatic priority, the most effective method for expediting urgently needed cars is by using a Preference List.

Preference Lists should be made weekly to keep them current and mailed on Friday to utilize the weekend for transit.

List the orders in sequence of their importance. Every effort will be made to schedule orders according to the Preference List.

Orders for which a production notice has been received should be eliminated from the Preference List, as this indicates that a car is in the final stages of assembly.

A supply of Preference Lists (CAD 1541A) is available upon request.

WORK SHEET

A new car order Work Sheet (CAD 5600W) is a dealer aid available upon request from the zone office.

Listing the specifications of cars to be ordered during an allotment will permit for an accurate evaluation of all orders. Any omission can be corrected before transcribing to the order form (CAD 5600A).

UNIFORM PARTS CODES

Three character codes, following the optional equipment on pages 11, 42 and 43 are listed for the benefit of all dealers so they may become familiar with the UPC system used by Cadillac.

Everyone's familiarity with these codes will be beneficial in the future.

GROUP ORDERING

All groups may be ordered on all body styles (group 4 available on "75" only) even though some items are standard.

Group ordering eliminates the possibility of omitting options desired by the customer which may be difficult and costly to install after the car is received.

Ordering by group, rather than individual option, is an ordering and sales tool. A "package" of complementary options increases driving pleasure and reduces effort.

A basic group (either 1, 2, 3 or 4) provides the most important optional features of a 1972 Cadillac. Radio, White Wall Tires, Soft Ray Glass, Door Edge Guards, Automatic Climate Control and 6-Way Power Seat Adjuster are included in the basic groups.

Because of the popularity of these items, any order without a basic group should be carefully scrutinized.

Equipment Groups 8 and 9 contain the same popular options offered previously and may be ordered on all body styles.

NEW CAR DELIVERY REPORT

DELIVERY RECORDS

Complete and correct reporting of new car delivery information is essential for many important reasons. The New Car Delivery Report Card is the only document used to credit the dealer for delivering a car. It is also used to obtain information required by the National Traffic and Motor Vehicle Safety Act, to verify service documents, to provide an accurate listing for direct mail and sales prospect programs and to furnish data for many sales and service reports.

Your cooperation in promptly sub-

mitting complete and correct information will result in better service to Cadillac dealers and customers.

RECEIPT OF CARD

A yellow-striped New Car Delivery Report Card is mailed to the CHARGE TO dealer after the car is shipped. Preprinted on this card, as illustrated below, are the Vehicle Identification Number, Body Style, Order Number, Shipment Date and Outlet Code. The charge to dealers code is pre-printed in the delivering outlet box.

																		DELIVERY DATE										DEMO DATE										S VEHICLE IDENTIFICATION NUMBER										ORDER NUMBER										DATE SHIPPED										CHARGE TO OUTLET									
P	68169 Q100000																		P0000										00 00 00										00000																																						
S	VEHICLE IDENTIFICATION NUMBER																		ORDER NUMBER										DATE SHIPPED										CHARGE TO OUTLET																																						
PURCHASER																																								↑ DELIVERING OUTLET CODE																																					
MR. MISS MRS.																																																																													
STREET ADDRESS																				SALESMAN CODE																																																									
CITY										STATE										ZIP CODE																																																									
D DATE OF DELIVERY										CUSTOMER CLASSIFICATION										G TRADE-IN DATA																																																									
I MILEAGE AT TIME OF DELIVERY										<input type="checkbox"/> A ATTORNEY <input type="checkbox"/> I OTHER INDIVIDUAL <input type="checkbox"/> P DOCTOR <input checked="" type="checkbox"/> C COMPANY <input type="checkbox"/> T DENTIST <input type="checkbox"/> L RENTAL & LEASING <input type="checkbox"/> B MERCHANT <input type="checkbox"/> O OTHER										A YR CADILLAC K BUICK OTHER E ELDOorado L CHEV. OTHER B ELECTRA 225 M CHRY. OTHER C RIVIERA N FORD OTHER D OLDS 98 O OLDS OTHER U TORONADO P PONTIAC F CORVETTE Q AMERICAN MTRS. G IMPERIAL W MERCEDES H NEW YORKER Y PORSCHE I LINCOLN R FOREIGN OTHER V MARK III S MISCELLANEOUS J THUNDERBIRD T NO TRADE																																																									
F DEMONSTRATOR DATE										DELIVERED BY																																																																			
FIRM NAME																																																																													
CITY										STATE																																																																			
MAILING SERVICES-PARTICIPATING DEALERS ONLY										ENTER "Y" NO. OF USED CADILLAC TO DISCONTINUE MAILING SERVICES																																																																			
<input type="checkbox"/> NO THANK YOU CALENDAR PROGRAM <input type="checkbox"/> NO SERVICE REMINDER PROGRAM																																																																													
YEAR										DELIVERING OUTLET																																																																			

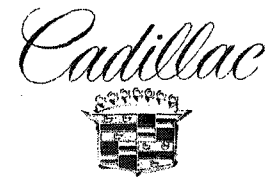
**NEW CAR
DELIVERY
REPORT CARD**

 COMPLETE PROMPTLY AND MAIL TO ZONE OFFICE
 GENERAL MOTORS CORPORATION
 CADILLAC MOTOR CAR DIVISION

REPORTING RETAIL DELIVERY

After a new Cadillac is delivered at retail, type in required information as follows and forward to Zone office. (Letter codes refer to illustration.)

- (A) Delivering outlet code. It is important that the correct five-digit numerical code is used to assure that the proper dealer receives credit for that delivery.
- (B) Purchaser's name, address and zip code. The purchaser's name, whether an individual or a company, should be limited to twenty-five characters and spaces. Incomplete or incorrect purchaser data often causes mail to be undeliverable. Purchaser should be the owner of the car. If purchaser is a rental or leasing company, show only the company name and address; do not include the lessee. For easy identification many dealer leasing and independent leasing companies use a code on the delivery report card in addition to the leasing company name.
- (C) Customer classification. Check only one box. If purchaser is a rental or leasing company, only the LEASING box should be checked. If the individual purchaser is not an attorney, a doctor, a dentist or a merchant, check other individual.



NEW CAR DELIVERY REPORT CARD

COMPLETE PROMPTLY AND MAIL TO ZONE OFFICE
GENERAL MOTORS CORPORATION
CADILLAC MOTOR CAR DIVISION

DELIVERY INFORMATION

- (D) Date of delivery must be the date the retail purchaser actually accepts delivery of the vehicle by taking physical possession of it personally or through a third party. Thus, the date of delivery may vary from the dealer invoice date or actual payment date.
- (E) Delivering dealer's name and address assists in the identification and handling of the cards.
- (F) Demonstrator date. If car had been in demonstrator service at any time, enter the date that it was placed in service in addition to the retail delivery date.
- (G) Trade-in data. Identify trade-in by typing last two digits of model year next to the proper make of X for "no-trade". The "Chrysler Other" and "Ford Other" designations can be used for all cars of these manufacturers, except those shown separately. No other identification is necessary.
- (H) Mailing services. Dealers participating in the "Thank You Calendar program and/or the Service Reminder program" may exclude the purchaser from either or both programs by placing an X in the appropriate space. This feature provides a convenient means of informing Cadillac that the particular purchaser is not to be enrolled. If the purchaser has traded a Cadillac, entering the Vehicle Identification Number of the used car will discontinue mailing services, thus avoiding duplicate mailings and unnecessary dealer expense.
- (I) Mileage at time of delivery. Enter last four mile digits appearing on odometer.
- (J) Salesman's Code - Provision has been made for those dealers enrolled in the "Direct Mail File" program to identify each Cadillac owner with his salesman. To report the salesman indicate with a CAPITAL letter the salesman's identification code which you have assigned. All House sales should be coded "A".

RED-STRIPED DELIVERY REPORT CARDS

If the original yellow-striped card is incorrect or unavailable due to any cause such as: being mislaid, submitted in error, spoiled in preparation, etc., a red-striped card should be substituted and the same information filled in as previously illustrated. The red-striped card will not be preprinted, so this information must also be filled in. These cards should be used to submit address corrections for original owners only. A supply of the red-striped cards is available upon request from the Zone Office.

GREEN-STRIPED DELIVERY REPORT CARDS

A green-striped Delivery Report Card is mailed to dealers for cars delivered to General Motors Employees under the Employee Purchase Plan and for cars delivered to Cadillac and other General Motors Divisions. These cards should contain the information previously illustrated except (F) and (H). Name and address should be that of the employee if he is the purchaser or the General Motors Division and their address. For cars placed in service by Cadillac, the purchaser should be shown as Cadillac Motor Car Div. with the address of the local Zone Office, training center, or Central Office according to the location of the individual to whom the car is assigned.

FIELD TRANSFER AND DEMONSTRATOR

① V.I. NUMBER										② DATE																			
IMPORTANT: THE SELLING DEALER, ONLY, SHOULD REPORT A FIELD TRANSFER.																													
CHECK ONE ③ <input type="checkbox"/> FIELD TRANSFER ④ <input type="checkbox"/> DEMONSTRATOR										INSTRUCTIONS 1. IF ITEM 3 IS CHECKED, FILL IN ALL ITEMS 2. IF ITEM 4 IS CHECKED, DO NOT FILL IN ITEMS 7 OR 8 3. PLEASE TYPE ALL INFORMATION WITHIN ALLOTTED SPACES																			
⑤ REPORTING OUTLET NUMERICAL CODE					⑥ REPORTING OUTLET										⑦ RECEIVING OUTLET NUMERICAL CODE					⑧ RECEIVING OUTLET									
FIRM NAME										FIRM NAME																			
ADDRESS										ADDRESS																			
CITY					STATE					ZIP CODE					CITY					STATE					ZIP CODE				
① RECEIVING OUTLET NUMERICAL CODE					① RECEIVING CITY					③④⑤ REPORTING OUTLET NUMERICAL CODE					① REPORTING CITY					① ENGINE NUMBER					② DATE				



FIELD TRANSFER OR DEMONSTRATOR REPORT

CADILLAC MOTOR CAR DIVISION
GENERAL MOTORS CORPORATION

DEMONSTRATOR

Whenever a car is placed in demonstrator service, an orange card must be submitted to the Zone Office. The card should contain information designated ① ② ④ ⑤ ⑥ on the above illustration. Firm name and address must be complete including zip code. Retain the yellow-striped Delivery Report Card and complete it when the demonstrator is sold at retail, being sure to include the demonstrator date on the yellow striped card.

FIELD TRANSFER

A field transfer occurs when a new Cadillac is sold by one Cadillac dealer to another. Only the SELLING DEALER should report the transfer to the Zone Office on an orange card. The original yellow-striped card should be forwarded to the dealer receiving the car.

GENERAL INFORMATION—IMPORTANT

A new Car Delivery Report Card must be received at the Zone Office for each car delivered. Credit can be given for the delivery only when the card is received at the Zone Office.

Prepare cards promptly after physical delivery and mail them daily to the Zone Office. This will result in prompt credit.

A Demonstrator Report Card must be received at the Zone Office for each car placed into demonstrator service. Yellow- or red-striped cards should not be used to report demonstrators. Do not wait until a car is delivered at retail to indicate that it was in demonstrator service.

If a card is submitted for a purchaser who did not take delivery of a car, advise the Zone Office immediately.

Incomplete and incorrect cards will be returned to the dealer with the reason checked on the back of the card.

It would be appreciated if all cards are typewritten. This assures clarity, avoids incorrect interpretation and unnecessary delays in processing the cards.

OPTIONS

Cadillac 1972 EQUIPMENT

	CALAIS		DE VILLE	
	Coupe G	Sedan N	Coupe J	Sedan B
FIREMIST COLOR – Exterior	\$	\$	\$	\$
VINYL ROOF C09	N/A	N/A		
EXPANDED VINYL UPHOLSTERY – Std. Options				
LEATHER UPHOLSTERY – Standard Options	N/A	N/A		
DUAL COMFORT SEAT AM6	N/A	N/A		
V SEAT ADJUSTER – Passenger Dual Comfort AG2	N/A	N/A		
5 LICENSE FRAME – One & FILLER PLATE V50				
6 LICENSE FRAMES – Two V51				
7 FILLER PLATE VK1	N/C	N/C	N/C	N/C
S SUNROOF – CA1	N/A	N/A		
1 RADIO – AM-FM Stereo with Tape Player UM2				
2 RADIO – AM-FM Stereo Signal Seeking UN2				
3 RADIO – AM-FM Push Button U69				
4 RADIO – AM-FM Stereo Rear Control U67	N/A	N/A	N/A	N/A
W TIRES – White Wall (5) Q03 or Q08				
E GLASS – Soft Ray AO1				
D DOOR EDGE GUARDS B93				
K AUTOMATIC CLIMATE CONTROL C61				
B LAMP MONITORS U46 Includes Washer Level Monitor				
Y SEAT ADJUSTER – 6-Way Front – Bench A42 6-Way Driver's Dual Comfort AG1	N/A	N/A		
M DOOR LOCKS – Power AU3 *Includes Electric Backrest Release	*		*	
Q STEERING WHEEL – Tilt & Telescope N37				
T TRUNK LOCK – Remote Control A90				
F FLOOR MATS – Rubber Y28				
P TRUNK MAT – Rubber B36				
J TWILIGHT SENTINEL T82				
A DE-FOGGER – Rear Window C50				
C CRUISE CONTROL K30				
U HEADLAMP CONTROL – Guide-Matic T80				
O OPERA LAMPS C93	N/A	N/A	N/A	N/A
I REMOTE CONTROL MIRROR – Right Side DF3				
G CONTROLLED DIFFERENTIAL G80				
L LEVEL CONTROL – Automatic G67				
H TRUMPET HORN UB8				
S SHOULDER BELTS – Front A85	N/A	N/A	N/A	N/A
X TRACK MASTER JL9				
Z 3.15 TO 1 AXLE RATIO G90	N/C	N/C	N/C	N/C
R TRAILERING PACKAGE YM7				
N HEAVY DUTY COOLING SYSTEM V01				

LEGEND

N/C	No Charge		Extra Charge Option
N/A	Not Available		
STD	Standard – No Charge		Special Order – Extra Charge

Cadillac

1972 EQUIPMENT

OPTIONS

	FLEETWOOD				
	Eldorado Coupe H	Eldorado Convertible E	Brougham P	"75" Sedan R	"75" Limousine S
FIREMIST COLOR – Exterior	\$	\$	\$	\$	\$
VINYL ROOF C09		N/A	STD		
EXPANDED VINYL UPHOLSTERY – Std. Options					
LEATHER UPHOLSTERY – Standard Options		STD			
DUAL COMFORT SEAT AM6			STD		N/A
V/SEAT ADJUSTER – Passenger Dual Comfort AG2					N/A
5 LICENSE FRAME – One & FILLER PLATE V50					
6 LICENSE FRAMES – Two V51					
7 FILLER PLATE VK1	N/C	N/C	N/C	N/C	N/C
S SUNROOF – CA1		N/A			
1 RADIO – AM-FM Stereo with Tape Player UM2					
2 RADIO – AM-FM Stereo Signal Seeking UN2					
3 RADIO – AM-FM Push Button U69					
4 RADIO – AM-FM Stereo Rear Control U67	N/A	N/A	N/A		
W TIRES – White Wall (5) Q03 or Q08					
E GLASS – Soft Ray A01					
D DOOR EDGE GUARDS B93					
K AUTOMATIC CLIMATE CONTROL C61				STD	STD
B LAMP MONITORS U46 Includes Washer Level Monitor					
Y SEAT ADJUSTER – 6-Way Front – Bench A42					N/A
Y SEAT ADJUSTER – 6-Way Driver's Dual Comfort AG1					N/A
M DOOR LOCKS – Power AU3 *Includes Electric Backrest Release	*	*			
Q STEERING WHEEL – Tilt & Telescope N37					
T TRUNK LOCK – Remote Control A90					
F FLOOR MATS – Rubber Y28 or Y36 or BG2					
P TRUNK MAT – Rubber B36					
J TWILIGHT SENTINEL T82					
A DE-FOGGER - Rear Window C50 or C49				STD	STD
C CRUISE CONTROL K30					
U HEADLAMP CONTROL – Guide-Matic T80					
O OPERA LAMPS C93	N/A	N/A			
I REMOTE CONTROL MIRROR – Right Side DF3				STD	STD
G CONTROLLED DIFFERENTIAL G80	N/A	N/A			
L LEVEL CONTROL – Automatic G67	STD	STD	STD	STD	STD
H TRUMPET HORN UB8					
S SHOULDER BELTS – Front A85	N/A		N/A	N/A	N/A
X TRACK MASTER JL9					
Z 3.15 TO 1 AXLE RATIO G90	N/A	N/A	N/C	STD	STD
R TRAILERING PACKAGE YM7				N/A	N/A
N HEAVY DUTY COOLING SYSTEM V01					

LEGEND

N/C	No Charge		Extra Charge Option
N/A	Not Available		
STD	Standard – No Charge		Special Order – Extra Charge

INDEX

A

Accent Stripe10, 14
 Acknowledgement of CWC32
 Acknowledgement of Special Order24
 Acrylic Lacquers23, 24, 31
 All Cloth29
 Arm Rests, Center18, 19
 Automatic Climate Control11, 18, 19
 Auxiliary Seats18, 19
 Axle Ratio11, 12

B

Belts, Seat & Shoulder3, 18, 19
 Bench Seat4, 5
 Blackwall Tires13
 Body Molding6
 Body Styles1
 Boot, Convertible Top3

C

CWC32
 California Courtesy Delivery33
 Card, Delivery Report39, 40
 Carpet Change25
 Carpets25
 Climate Control, Automatic18, 19
 Cloth Front22
 Cloth Trim Codes4
 Codes1, 2
 Color Codes2
 Color-Top Recommendations7
 Color-Trim Recommendations8, 9
 Color Usage2
 Colors, Past Model31
 Controls, "75" Rear20
 Convertible Top3, 5, 7
 Courtesy Delivery33
 Cruise Control11
 Customer Will Call32

D

De-Fogger11
 Delivery, California33
 Delivery, Courtesy33
 Delivery Report Card39, 40
 Demonstrator & Field Transfer41
 Differential, Controlled11
 Door Edge Guards11
 Door Locks, Power11
 Dual Comfort Seat3, 4, 5

E

Equipment3, 11
 Equipment Groups11
 Estimated Production Date36
 Exterior Color, Special31
 Exterior Ornamentation6
 Extra Charge26

F

Factory Delivery (CWC)32
 Field Transfer41
 5600 A Order Instructions34, 35, 36
 Firemist Color2, 7
 Fleetwood Body Styles18, 19, 20
 Fleetwood "75" Sedan &
 Limousine18, 19, 20
 Floor Mats11, 15
 Follow Up, Special Order24

G

Gear Ratio12
 Generators12, 16
 Glass12
 Green Striped Delivery Report Card40
 Groups, Equipment11

H-I

Headlamp Control	11
Headlining	14
Heavy Duty Cooling System	3, 11, 16
Hood Ornament	6
Inserts, Door	6
Instructions, 5600 A Order Form	34, 35, 36
Instructions, Special Orders	21 - 31
Interior Information	14
"75" Sedan-R	18, 20
"75" Limousine-S	19, 20
Interior Options	14
Interior Ornamentation	6

L

Laces	23, 26
Landau Roof, "75"	21
Leather	5, 14
Length, Overall	1
Level Control, Automatic	11
License Frames	11
Limousine, Fleetwood "75"-S	19

M-N

Manufacturer's Color Numbers	2
Mats, Rubber Floor	15
Maximum Leather	23, 30
Mirrors	3, 11
New Car Delivery Report Card	39, 40
New Codes	3
New Model Information	14
Number of Trim Options	14

O-P

Opera Lamps	3, 11
Options	11, 42, 43
Order Examples -	
Special	21-31
Order Instructions	34, 35, 36

Order Status	34, 38
Overall Length	1
Padded Roof	3

R

Radio	11
Rear Control Radio	11, 20
Recommendations	
Accent Stripes	10
Color-Top	7
Color-Trim	8, 9
Replacement Orders	37
Rosewood	6, 18, 19, 20
Rubber Floor Mats	15
Roof	
Landau	18, 19, 21
Padded	3
Vinyl	3, 5, 7

S

Seat Adjuster	11, 18, 19
Seats Only	26
Sedan Front Seat	30
Series Identification	1, 6
70th Anniversary Cloth	14
Seventy-Five Limousine - S	19, 20
Seventy-Five Sedan - R	18, 20
Shipment to California	33
Ship To	33
60-40 Seat	3, 4, 5
Soft Ray Glass	11, 12
Special Carpets	25
Special Color Exterior	31
Special Leather	30
Special Orders	21-31
Special Paint	31
Steering Wheel, T & T	11
Stereo Tape Player	11
Style Numbers	1
Sunroof	11, 12

T

Tape Player, Stereo	11
Time Required - Special Requests	24
Tires	13
Top Boot Convertible	3
Top - Color Recommendations	7
Track Master	3, 11, 13
Trailer Package	11, 16
Trim Chart	4, 5
Trim Codes	3, 4, 5, 14
Trim - Color Recommendations	8, 9
Trim Options	14
Truck Lock	11
Trunk Mat	11
Twilight Sentinel	11

Two-Tone Interior	27
-------------------------	----

U-V

Upholstery Recommendations	8, 9
Vehicle Identification Number	17, 38
Vinyl Roof	3, 5, 7
Vinyl Upholstery	28

W

Whitewall Tires	11, 13
Will Call, Customer	32

1972

EXTERIOR ACRYLIC PAINT COLOR CHART

Refer to body name plate on cowl of car for Paint Color No. and Roof Top Code. The two digit number on the name plate indicates exterior paint color, and the single letter, if any, indicates color of roof top cover. For example, "11K" indicates exterior paint color white with black roof top covering, whereas "11" indicates paint color white on entire car exterior.

Use Stock No. shown in this chart to order paint from local paint suppliers.

BODY AND SHEET METAL

Exterior Paint Color No.	Color Name	Original Color No.	Mfr.	Stock No. R-M	Stock No. Dupont	Stock No. Ditzler
11	Cotillion White	L-67-WD007	R-M	A-2080	5338L	DDL-2058
14	Contessa Pewter	870-4230	▲Forbes	A-2541	5426L	DDL-2429
18	Mayfair Gray	L-68-AD025	R-M	A-2542	5427L	DDL-2430
19	Sable Black	870-848	▲Forbes	A-946	99L	DDL-9400
24	Zodiac Blue	L-68-BD068	R-M	A-2576	5270L	DDL-2328
29	Brittany Blue	L-68-BD069	R-M	A-2441	5272L	DDL-2330
34	Adriatic Turquoise	L-68-BD033	R-M	A-2265	5302L	DDL-2168
44	Sumatra Green	L-68-GD068	R-M	A-2549	5444L	DDL-2436
49	Brewster Green	L-68-GD069	R-M	A-2553	5445L	DDL-2440
50	Willow	L-67-HD006	R-M	A-2554	5431L	DDL-2441
54	Promenade Gold	L-68-LD025	R-M	A-2556D	5432L	DDL-2442
59	Stratford Covert	L-68-ND040	R-M	A-2560	5447L	DDL-2446
64	Tawny Beige	L-68-ND041	R-M	A-2563	5446L	DDL-2449
69	Cognac	L-68-ND038	R-M	A-2566	5438L	DDL-2452
90	Ice Blue Firemist	L-68-BD079	R-M	A-2569	5448L	DDL-2456
92	St. Moritz Blue Firemist	L-68-BD080	R-M	A-2570	5457L	DDL-2457
93	Palomino Firemist	L-68-ND042	R-M	A-2571	5449L	DDL-2458
94	Patrician Covert Firemist	L-68-ND043	R-M	A-2572	5453L	DDL-2459
96	Balmoral Green Firemist	L-68-GD070	R-M	A-2573D	5455L	DDL-2460
99	Russet Firemist	927-AF431	Dupont	A-2575	5459L	DDL-2462

▲ Ditzler supplier for Forbes refinishing materials.

PAINTED MOLDING USED WITH ROOF TOP COVERINGS

(Note: For proper gloss use flattening agent)

Roof Top Code	Color Name	Stock No. R-M	Stock No. Dupont	Stock No. Ditzler
J	White	171B90	9895L	8856
K	Black	169C41	99L	9348
L	Blue	171B20	9872L	14165
M	Covert	172B73	9959L	44500
N	Green	172B36	9960L	44499
R	Brown	172B89	9961L	23624
S	Lt. Beige	170B80	9746L	23341

PAINT STRIPING

Color Name	Stock No. R-M	Stock No. Dupont	Stock No. Ditzler	Color Name	Stock No. R-M	Stock No. Dupont	Stock No. Ditzler
Black	A-946	99L	9000	Green	172B34	9950L	44513
White	A-2080	5338L	2058	Red	171B50R	9890LH	71892
Blue	172B20	9949L	14291	Gold	172B70	9951L	23629
Covert	172B88	9952L	44514	Brown	172B87	9953L	23630

WHEELS

Color Name	Stock No. R-M
Black	P403

FOR INTERIOR COLORS SEE CHARTS ON FOLLOWING PAGES

1972
TRIM CODE COLOR REFERENCE CHART

Reference Chart for Determining Paint Colors on Interior Parts from the Paint Charts by Trim Code No. (Trim Code No. is stamped on Metal Plate Attached to Left Side of Cowl Under Hood near Hood Hinge.)

Style 68169 (P)

Trim Comb.	011	Black Matador (Cloth) w/Black (Leather)
	019	Med. Pewter Minuet (Cloth) w/Med. Pewter (Leather)
	026	Dk. Blue Matador (Cloth) w/Dk. Blue (Leather)
	028	Med. Aqua Minuet (Cloth) w/Med. Aqua (Leather)
	031	Dk. Jade Matador (Cloth)
	043	Med. Beige Medici (Cloth)
	044	Med. Maize Minuet (Cloth) w/Med. Maize (Leather)
	046	Dk. Covert Matador (Cloth)
	051	Black (Leather)
	052	White (Leather)
	066	Dk. Blue (Leather)
	071	Dk. Jade (Leather)
	083	Lt. Covert (Leather)
	084	Med. Maize (Leather)
	085	Dk. Saddle (Leather)
	086	Dk. Covert (Leather)
	089	Dk. Oxblood (Leather)

Styles 68247 (G), 49 (N)

Trim Comb.	211	Black Mayfair (Cloth) w/Black (Coated Fabric)
	226	Dk. Blue Mayfair (Cloth) w/Dk. Blue (Coated Fabric)
	228	Med. Aqua Mayfair (Cloth) w/Med. Aqua (Coated Fabric)
	231	Dk. Jade Mayfair (Cloth) w/Dk. Jade (Coated Fabric)
	242	Med. Beige Mayfair (Cloth) w/Med. Beige (Coated Fabric)
	244	Med. Maize Mayfair (Cloth) w/Med. Maize (Coated Fabric)
	251	Black (Coated Fabric)
	285	Dk. Saddle (Coated Fabric)

Styles 68347 (J), 49 (B)

Trim Comb.	311	Black Majesty (Cloth) w/Black (Leather)
	326	Dk. Blue Majesty (Cloth) w/Dk. Blue (Leather)
	328	Med. Aqua Medley (Cloth) w/Med. Aqua (Leather)
	331	Dk. Jade Medley (Cloth) w/Dk. Jade (Leather)
	342	Med. Beige Medley (Cloth) w/Med. Beige (Leather)
	344	Med. Maize Majesty (Cloth) w/Med. Maize (Leather)
	346	Dk. Covert Majesty (Cloth) w/Dk. Covert (Leather)
	351	Black (Leather)
	352	White (Leather) w/Black Carpets
	353	White (Leather) w/Dk. Blue Carpets
	354	White (Leather) w/Dk. Oxblood Carpets
	357	White (Leather) w/Jade Carpets
	366	Dk. Blue (Leather)
	371	Dk. Jade (Leather)
	383	Lt. Covert (Leather) w/Med. Covert Carpets
	384	Med. Maize (Leather)
	385	Dk. Saddle (Leather)
	386	Dk. Covert (Leather)
	389	Dk. Oxblood (Leather)

TRIM CODE COLOR REFERENCE CHART (Cont'd.)

Style 69347 (H)

Trim Comb.	411	Black Morocco (Cloth) w/Black (Coated Fabric)
	426	Dk. Blue Morocco (Cloth) w/Dk. Blue (Coated Fabric)
	428	Med. Aqua Mandate (Cloth) w/Med. Aqua (Coated Fabric)
	431	Dk. Jade Mandate (Cloth) w/Dk. Jade (Coated Fabric)
	442	Med. Beige Mandate (Cloth) w/Med. Beige (Coated Fabric)
	444	Med. Maize Morocco (Cloth) w/Med. Maize (Coated Fabric)
	446	Dk. Covert Morocco (Cloth) w/Dk. Covert (Coated Fabric)
	451	Black (Leather)
	452	White (Leather) w/Black Carpets
	453	White (Leather) w/Dk. Blue Carpets
	454	White (Leather) w/Dk. Oxblood Carpets
	457	White (Leather) w/Jade Carpets
	466	Dk. Blue (Leather)
	471	Dk. Jade (Leather)
	483	Lt. Covert (Leather) w/Med. Covert Carpets
	484	Med. Maize (Leather)
	485	Dk. Saddle (Leather)
	486	Dk. Covert (Leather)
	489	Dk. Oxblood (Leather)

Style 69367 (E)

Trim Comb.	451	Black (Leather)
	452	White (Leather) w/Black Carpets
	453	White (Leather) w/Dk. Blue Carpets
	454	White (Leather) w/Dk. Oxblood Carpets
	457	White (Leather) w/Jade Carpets
	466	Dk. Blue (Leather)
	471	Dk. Jade (Leather)
	483	Lt. Covert (Leather) w/Med. Covert Carpets
	484	Med. Maize (Leather)
	485	Dk. Saddle (Leather)
	486	Dk. Covert (Leather)
	489	Dk. Oxblood (Leather)

Style 69723 (R)

Trim Comb.	711	Black Dante (Cloth) w/Black (Leather)
	719	Med. Pewter Minuet (Cloth)
	726	Dk. Blue Dante (Cloth)
	742	Med. Beige Minuet (Cloth)

Style 69733 (S) Leather Front Compartment and Cloth Rear Compartment

Trim Comb.	711	Black (Leather) w/Black Dante (Cloth)
	719	Black (Leather) w/Med. Pewter Minuet (Cloth)
	726	Black (Leather) w/Dk. Blue Dante (Cloth)
	742	Black (Leather) w/Med. Beige Minuet (Cloth)

CONVERTIBLE TOP COLOR OPTIONS

Style 69367 (E)

Option	A	White
Option	B	Black
Option	C	Blue
Option	E	Lt. Beige
Option	M	Covert

ROOF COVERING OPTIONS

Styles 68169 (P), 68347 (J), 49 (B), 69347 (H)

Option	J	White
Option	K	Black
Option	L	Blue
Option	M	Covert
Option	N	Green
Option	R	Brown
Option	S	Lt. Beige

1972
INTERIOR COLOR COMBINATIONS
 "25"% GLOSS PAINT

Garnish and Roof Rail Moldings, ▲ Seat Back, Center Armrest and ▲ Side Panels, Seat Back Hinge and Center Armrest Covers, Coat Hooks, Seat Adjuster Track Covers, Carpet Retainer Covers, Steering Column Upper Cover, Radio Speaker and Defroster Grilles, Instrument Panel and Cover, Glove Box Door, Door Locking Knob Ferrules, Sensor Grilles, Cowl Kick Pads, Lower Center Pillar Covers, and Rear Seat Back to Quarter Panel Fillers.

<u>To Match</u> <u>Trim Code No.</u>	<u>Color</u>		<u>(Formula No.)</u> <u>Matching Colors</u>
011, 051, 052, 211, 251, 311, 351, 352, 411, 451, 452, 711, ■719, ■726, ■742	Black	R-M Dupont Ditzler	170B40 99L DIA-9387
■69733 Frt. Compartment			
026, 066, 226, 326, 353, 366, 426, 453, 466, ◆726	Dark Blue.	R-M Dupont Ditzler	171B27 9807L DIA-14104
◆Exc. 69733 Frt. Compartment			
028, 228, 328, 428,	*Med. Aqua	R-M Dupont Ditzler	171B28 9796L DIA-44333
028, 228, 328, 428	oDark Aqua	R-M Dupont Ditzler	171B29 9797L DIA-14105
031, 071, 231, 331, 357, 371, 431, 457, 471	Dark Jade.	R-M Dupont Ditzler	172B32 9910L DIA-44515
043, 242, 342, 442, ◆742	*Med. Beige	R-M Dupont Ditzler	171B77 9809L DIA-23432
◆Exc. 69733 Frt. Compartment			
043, 242, 342, 442, ◆742	oDark Beige	R-M Dupont Ditzler	171B78 9810L DIA-23433
◆Exc. 69733 Frt. Compartment			
044, 084, 244, 344, 384, 444, 484.	*Med. Maize.	R-M Dupont Ditzler	171B75 9798L DIA-23437
044, 084, 244, 344, 384, 444, 484.	oDark Maize.	R-M Dupont Ditzler	171B76 9800L DIA-23438
052, 352, 353, 354, 452, 453, 454	*White.	R-M Dupont Ditzler	169C92 9625L DIA-8855

1972
INTERIOR COLOR COMBINATIONS
 "25"% GLOSS PAINT (Cont'd.)

Garnish and Roof Rail Moldings, ▲ Seat Back, Center Armrest and ▲ Side Panels, Seat Back Hinge and Center Armrest Covers, Coat Hooks, Seat Adjuster Track Covers, Carpet Retainer Covers, Steering Column Upper Cover, Radio Speaker and Defroster Grilles, Instrument Panel and Cover, Glove Box Door, Door Locking Knob Ferrules, Sensor Grilles, Cowl Kick Pads, Lower Center Pillar Covers, and Rear Seat Back to Quarter Panel Fillers.

<u>To Match</u> <u>Trim Code No.</u>	<u>Color</u>		<u>(Formula No.)</u> <u>Matching Colors</u>
019, 719	*Med. Pewter	R-M Dupont Ditzler	171B14 9804L DIA-32891
▲Exc. 69733 Frt. Compartment			
019, 719	oDark Pewter	R-M Dupont Ditzler	171B15 9805L DIA-32892
▲Exc. 69733 Frt. Compartment			
083, 383, 483	@ Lt. Covert	R-M Dupont Ditzler	172B82 9912L DIA-44509
083, 383, 483	@@Med. Covert.	R-M Dupont Ditzler	172B84 9913L DIA-44516
046, 083, 086, 346, 383, 386, 446, 483, 486	oDark Covert	R-M Dupont Ditzler	172B85 9914L DIA-44511
085, 285, 385, 485	Dark Saddle	R-M Dupont Ditzler	171B88 9801L DIA-23436
089, 354, 389, 454, 489	Dark Oxblood	R-M Dupont Ditzler	172B51R 9916L DIA-50878

- * Exc. Windshield Side and Upper Garnish Moldings.
- o Windshield Side and Upper Garnish Moldings.
- @ Exc. Windshield Side and Upper Garnish Moldings, Front Seat Adjuster Track Covers, Carpet Retainer Covers, and Cowl Kick Pads.
- @@ Front Seat Adjuster Track Covers, Carpet Retainer Covers, and Cowl Kick Pads.

▲ These polypropylene (plastic) parts require a special polypropylene primer before they will satisfactorily and durably accept and hold paint.

Polypropylene primer for service applications is obtainable from the following outlets:

<u>OUTLETS</u>	<u>TYPE PRIMER</u>
Mobil Cleveland West Plant 12815 Elmwood Avenue Cleveland, Ohio 44111 or from Mobil Refinish Outlets around the nation.	SCC-378 Clear Polypropylene Primer in quart containers.
Seibert-Oxidermo, Inc. 6455 Strong Avenue Detroit, Michigan 48211	X-5762 Plastic Primer in Aerosol cans.
Triangle Paint Company, Inc. 2222 Third Street Berkeley, California 94710	X-5762 Plastic Primer in Aerosol cans.

1972
INTERIOR COLOR COMBINATIONS
"O" % GLOSS PAINT

Steering Column and ▲Lower Cover, ▲Steering Wheel Shroud, Shift Lever and Signal Switch Housings, ▲Instrument Panel Bezel Extensions, ▲Windshield Wiper Switch Base, ▲Ash Tray Door, Fiber Optics Lens Cover and Base, Rear Seat Shoulder Strap Retainers and Back Window Defogger Grilles.

<u>To Match</u> <u>Trim Code No.</u>	<u>Color</u>		<u>(Formula No.)</u> <u>Matching Colors</u>
011, 051, 052, 211, 251, 311, 351, 352, 411, 451, 452, 711, ●719, ●726, ●742	Black	R-M Dupont Ditzler	168C41 4428L DIA-9317
●69733 Frt. Compartment			
026, 066, 226, 326, 353, 366, 426, 453, 466, ●726	Dark Blue	R-M Dupont Ditzler	171B25 9818L DIA-14103
●Exc. 69733 Frt. Compartment			
028, 228, 328, 428	Dark Aqua	R-M Dupont Ditzler	171B35 9861L DIA-14160
031, 071, 231, 331, 357, 371, 431, 457, 471	Dark Jade	R-M Dupont Ditzler	172B30 9919L DIA-44503
043, 242, 342, 442, ●742	Dark Beige	R-M Dupont Ditzler	171B85 9819L DIA-23452
●Exc. 69733 Frt. Compartment			
044, 084, 244, 344, 384, 444, 484	Dark Maize	R-M Dupont Ditzler	171B74 9816L DIA-23455
019, ●719	Dark Pewter	R-M Dupont Ditzler	171B11 9863L DIA-32950
●Exc. 69733 Frt. Compartment			
046, 083, 086, 346, 383, 386, 446, 483, 486	Dark Covert	R-M Dupont Ditzler	172B80 9923L DIA-44506
085, 285, 385, 485	Dark Saddle	R-M Dupont Ditzler	171B86 9817L DIA-23453
089, 354, 389, 454, 489	Dark Oxblood	R-M Dupont Ditzler	172B50R 9925L DIA-50875

▲ These polypropylene (plastic) parts require a special polypropylene primer before they will satisfactorily and durably accept and hold paint.

Polypropylene primer for service applications is obtainable from the following outlets:

<u>OUTLETS</u>	<u>TYPE PRIMER</u>
Mobil Cleveland West Plant 12815 Elmwood Avenue Cleveland, Ohio 44111 or from Mobil Refinish Outlets around the nation.	SCC-378 Clear Polypropylene Primer in quart containers.
Seibert-Oxidermo, Inc. 6455 Strong Avenue Detroit, Michigan 48211	X-5762 Plastic Primer in Aerosol cans.
Triangle Paint Company, Inc. 2222 Third Street Berkeley, California 94710	X5762 Plastic Primer in Aerosol cans.

AMA

1972

AMA SPECIFICATIONS FORM

. . . Passenger Car

MANUFACTURER	CAR NAME	
CADILLAC MOTOR CAR DIVISION	CADILLAC (ELDORADO)	
MAILING ADDRESS	MODEL YEAR	ISSUED
2860 Clark	1972	9/1/71
		REVISED (•)

The information contained herein is prepared, distributed by, and is solely the responsibility of the automobile manufacturing company to whose products it relates. Questions concerning these specifications should be directed to the manufacturer whose address is shown above. This specification form was developed by automobile manufacturing companies under the auspices of the Automobile Manufacturers Association.

AMA Specifications Form—Passenger Car

TABLE OF CONTENTS

BODY MODEL	1
CAR AND BODY DIMENSIONS	2, 3
POWER TEAMS	4
ENGINE	5-9
EXHAUST SYSTEM	9
FUEL SYSTEM	10
COOLING SYSTEM	11
VEHICLE EMISSION CONTROL	12
ELECTRICAL	13-15
DRIVE UNITS	16-18
TIRES AND WHEELS	19
BRAKES	19-20
STEERING	21
SUSPENSION – FRONT AND REAR	22
FRAME	23
BODY – MISCELLANEOUS INFORMATION	23
CONVENIENCE EQUIPMENT	24
LAMP HEIGHT AND SPACING	24
VEHICLE WEIGHTS	25
OPTIONAL EQUIPMENT WEIGHTS	26
CAR AND BODY DIMENSION KEY SHEETS	27, 28, 29
INDEX	30

NOTES:

1. The General Specifications herein are those in effect at date of completion and are subject to change without notice by the manufacturer.
2. UNLESS OTHERWISE INDICATED:
 - a. Specifications apply to standard models without optional equipment. Significant deviations are noted.
 - b. Nominal design dimensions are used throughout these specifications.
 - c. All dimensions are in inches.

AMA Specifications Form—Passenger Car

MAKE OF CAR Cadillac MODEL YEAR 1972 DATE ISSUED 9/1/71 REVISED (e)

BODY MODEL	Body Series, Type and Number. (Use mfr's. code for identification)		Number of Passengers (Indicate Front/Rear)	
<u>Description</u>	<u>Style Number</u>	<u>Sales Code</u>	<u>Vehicle Identification Number</u>	<u>Pass</u>
Fleetwood Eld. Coupe	69347	H	6L47S2Q400001	3 & 3
Fleetwood Eld. Conv.	69367	E	6L67S2Q400001	3 & 3

MAKE OF CAR Cadillac MODEL YEAR 1972 DATE ISSUED 9/1/71 REVISED (*)
CAR AND BODY DIMENSIONS

See Pages 27, 28 for SAE Dimension Definitions

All dimensions to ground are for comparative purposes only. Dimensions are to be shown for:
4-Dr. Sedan, 2-Dr. H.T., 4-Dr. H.T., Convertible and Station Wagon.

MODEL	SAE Ref. No.	69347 - 69367
-------	--------------------	---------------

WIDTH

Track - Front	W101	63.7
Track - Rear	W102	63.6
Maximum overall car width	W103	79.84
Body width at No. 2 pillar	W117	-
Max. front doors open	W120	
Max. rear doors open	W121	

LENGTH

Body "O" to front of dash	L 30		
Wheelbase	L101	126.3	
Overall car length	L103	222.7	
Overhang - front	L104	43.3	
Overhang - rear	L105	53.1	
Body upper structure length	L123	101.2	107.3
Body "O" line to Φ of rear wheel	L127	100.3	
Body "O" line to w s cowl point	L130	4.6	

HEIGHT

Passenger Distribution (front & rear)		3-3	
Trunk/Cargo load (lbs.)		200	
Overall height	H101	53.9	54.3
Cowl height	H114	38.4	
Deck height	H138		
Rocker panel - front	To ground	8.0	
	From front wheel Φ		
Bottom of front door to ground	H133	9.9	
Rocker panel - rear	To ground	8.2	
	From rear wheel Φ		
Bottom of rear door to ground	H135	-	
Windshield slope angle	H122	59.0	

GROUND CLEARANCE

Bumper to ground - front	H102	11.6
Bumper to ground - rear	H104	12.4
Angle of approach	H106	17.7
Angle of departure	H107	15.9
Ramp breakover angle	H147	11.9°
Rear axle differential to ground	H153	11.9
Min. running clearance (Specify)	H156	5.8

AMA Specifications Form—Passenger Car

MAKE OF CAR Cadillac MODEL YEAR 1972 DATE ISSUED 9/1/71 REVISED (*)

CAR AND BODY DIMENSIONS

See Pages 27, 29 for SAE Dimension Definitions

MODEL	SAE Ref. No.	69347	69367
-------	--------------	-------	-------

FRONT COMPARTMENT

H Point to body "O" line	L31	42.3	
Effective head room	H61	38.1	38.9
Max. eff. leg room - accelerator	L34	42.5	
H Point to Heel point	H30	8.2	
H Point travel	L17	5.8	
Shoulder room	W 3	63.1	
Hip room	W 5	61.7	
Upper body opening to ground	H50	49.8	

REAR COMPARTMENT

H Point couple distance	L50	33.1	
Effective head room	H63	37.1	38.1
Min. effective leg room	L51	35.7	
H Point to Heel point	H31	10.8	
Min. knee room	L48	3.1	
Rear Compartment room	L 3	26.1	
Shoulder room	W 4	62.6	61.4
Hip room	W 6	56.6	
Upper body opening to ground	H51		

LUGGAGE COMPARTMENT

Usable luggage capacity (cu. ft.)	V 1	13.6	11.0 (TOP DOWN)
Liftover height	H195	27.4	
Position of spare tire storage		HORIZONTAL	
Method of holding lid open		SPRING	

STATION WAGON - THIRD SEAT

Shoulder Room	W85	N.A.
Hip room	W86	N.A.
Effective leg room	L86	N.A.
Effective head room	H86	N.A.
Seat facing direction		

STATION WAGON - CARGO SPACE

Cargo length at floor - front seat	L202	N.A.
Cargo length at belt - front seat	L204	N.A.
Cargo width - Wheelhouse	W201	N.A.
Opening width at belt	W204	N.A.
Maximum cargo height	H201	N.A.
Rear opening height	H202	N.A.
Cargo volume index (cu. ft.) *4 x L204 x H201 1728	V2	N.A.

AMA Specifications Form—Passenger Car

MAKE OF CAR Cadillac (ELD) MODEL YEAR 1972 DATE ISSUED 9/1/71 REVISED (e)

POWER TEAMS

(Indicate whether standard or optional)

Gross bhp (brake horsepower) and gross torque corrected to 60° F and 29.92 in. Hg atmospheric pressure.

Net bhp (brake horsepower) and net torque corrected to 85° F and 29.38 in. Hg atmospheric pressure.

MODEL AVAILABILITY	ENGINE							TRANSMISSION	AXLE RATIO (Std. first) (Indicate A/C ratio)
	Displ. cu. in.	Ccarb.	Compr. Ratio	Gross @RPM		Net @RPM			
				BHP	Torque	BHP	Torque		
69347 & 69367	500	4BBL	8.5:1	-	-	235 @ 3800 RPM	385 @ 2400 RPM	Turbo Hydramatic	3.07:1

AMA Specifications Form—Passenger Car

MAKE OF CAR Cadillac MODEL YEAR 1972 DATE ISSUED 9/1/71 REVISED (*)

MODEL Eldorado

ENGINE - GENERAL

Type, no. cyls., valve arr.	90° - V-8 - O.V.
Bore and stroke (nominal)	4.3 X 4.304
Piston displacement, cu. in.	500 (8.2 Litres)
Bore spacing (C to C)	5.00
No. system	L. Bank 2 - 4 - 6 - 8
(front to rear)	R. Bank 1 - 3 - 5 - 7
Firing Order	1 - 5 - 6 - 3 - 4 - 2 - 7 - 8
Cylinder Head Material	Cast Iron
Cylinder Block Material	Cast Iron
Cyl. Sleeve-Wet, dry, none	None
Number of	Front 1
mtg. points	Rear 2
Engine installation angle	0°
Taxable $\text{Dia}^2 \times \text{No. Cyl.}$ horsepower 2.5	59.2
Recommended fuel regular - premium	91 R.O.N. Min.
Cylinder Head Volume (cc)	74.6
Head Gasket Thickness (Compressed)	.039
Head Gasket Volume (cc)	9.5
Deck Clearance (minimum) (above or below block)	.0045 Above
Minimum Combustion Chamber Volume (cc)	130

ENGINE - PISTONS

Material	Alum. Alloy with Cast in Steel Struts
Description and finish	Slipper Type Cam Ground. Controlled Expansion
Weight (piston only) oz.	25.52
Clearance	Top land .034 - .039
(limits)	Skirt Top .0006 - .0010
	Bottom - .0014 - +.0005
Ring groove	No. 1 ring 3.849 - 3.844
diameter	No. 2 ring 3.849 - 3.844
	No. 3 ring 3.880 - 3.875
	No. 4 ring None

AMA Specifications Form—Passenger Car

MAKE OF CAR Cadillac MODEL YEAR 1972 DATE ISSUED 9/1/71 REVISED (*)

MODEL Eldorado

ENGINE – RINGS

Function (top to bottom)	No. 1, oil or comp.	Comp.
	No. 2, oil or comp.	Comp.
	No. 3, oil or comp.	Oil
	No. 4, oil or comp.	None
Compression	Description - material, coating, etc.	# 1 Molybdenum Filled Cast Iron # 2 Phosphate Coated Cast Iron
	Width	.0770 - .0785
	Gap	.013 - .025
Oil	Description - material, coating, etc.	Multi-Piece Steel Chrome Plated Rail
	Width	.1795 - .1880
	Gap	.015 - .055
Expanders		Yes

ENGINE – PISTON PINS

Material		SAE - 1019 Steel
Length		3.030
Diameter		.9994 - .9999
Type	Locked in rod, in piston, floating, etc.	Locked In Rod
	Bush- ing	None
	In rod or piston Material	None
Clearance	In piston	.0002 - .0004
	In rod	Press Fit
Direction & amount offset in piston		.060 Toward Max Thrust Side

ENGINE – CONNECTING RODS

Material		G.M. 84M Arma Steel
Weight (oz.)		28.86
Length (center to center)		6.75
Bearing	Material & Type	AT 20 Steel Backed M 390 Steel Backed
	Overall length	.826
	Clearance (limits)	.0005 - .0028
	End play	.011 - .021 (Total Two Rods)

AMA Specifications Form—Passenger Car

MAKE OF CAR Cadillac MODEL YEAR 1972 DATE ISSUED 9/1/71 REVISED (*)

MODEL Eldorado

ENGINE - CRANKSHAFT

Material		Nodular Cast Iron	
Vibration damper type		Rubber Absorption	
End thrust taken by bearing (No.)		#3 Center Main	
Crankshaft end play		.002 - .012	
Main bearing	Material & type	M-400 Aluminum Steel Backed	
	Clearance	.0001 - .0026	
	Journal dia. and bearing overall length	No. 1	3.250 - 1.1925
		No. 2	3.250 - 1.0595
		No. 3	3.250 - 1.0670 (Inside) 1.258 (Outside)
		No. 4	3.250 - 1.0595
		No. 5	3.250 - 1.1925
		No. 6	None
		No. 7	None
	Dir. & amt. cyl. offset	R.H. Forward .47	L. H. Rearward .47
	No. bolts/main brg. cap	2	
Crankpin journal diameter		2.500	

ENGINE - CAMSHAFT

Location		Center of V	
Material		G.M. 120M Cast Iron	
Bearings	Material	Steel Backed Babbitt	
	Number	5	
Type of Drive	Gear or chain		Silent Chain
	Crankshaft gear or sprocket material		Sintered Iron GM 3884M
	Camshaft gear or sprocket material		Die Cast Aluminum with Nylon Covered Teeth
	Timing chain	No. of links	48
		Width	.750
		Pitch	.500

AMA Specifications Form—Passenger Car

MAKE OF CAR Cadillac MODEL YEAR 1972 DATE ISSUED 9/1/71 REVISED (*)

MODEL Eldorado

ENGINE - VALVE SYSTEM

Hydraulic lifters (Std., opt., NA) STD

Valve rotator, type (intake, exhaust) None

Rocker ratio 1.72:1

Operating tappet clearance (indicate hot or cold)

Intake	Auto
Exhaust	Auto

Timing (based on top of ramp points)	Intake	Opens (BTC)	34°	.001 Tappet Lift
		Closes (ABC)	100°	.001 Tappet Lift
		Duration (deg.)	314°	.001 Tappet Lift
	Exhaust	Opens (BBC)	78°	.001 Tappet Lift
		Closes (ATC)	56°	.001 Tappet Lift
		Duration (deg.)	314°	.001 Tappet Lift
Valve open overlap (deg.)		90°	.001 Tappet Lift	

Intake	Material		1041 Alum. Steel
	Overall length		5.231
	Actual overall head dia.		2.000
	Angle of seat & face (deg.)		Seat in Head 45° Valve Face 44°
	Seat insert material		None
	Stem diameter		.3420 - .3413
	Stem to guide clearance		.0010 - .0027
	Lift (zero lash)		.490
	Outer spring press. & length	Valve closed (lb. in.)	60-65 @ 1.946
		Valve open (lb. in.)	163-173 @ 1.456
	Inner spring press. & length	Valve closed (lb. in.)	None
		Valve open (lb. in.)	None

Exhaust	Material		DF-20
	Overall length		5.246
	Actual overall head dia.		1.625
	Angle of seat & face (deg.)		Seat 45° Face 44°
	Seat insert material		None
	Stem diameter		.3418 - .3413
	Stem to guide clearance		.0012 - .0027
	Lift (zero lash)		.490
	Outer spring press. & length	Valve closed (lb. in.)	60-65 @ 1.946
		Valve open (lb. in.)	163-173 @ 1.456
	Inner spring press. & length	Valve closed (lb. in.)	None
		Valve open (lb. in.)	None

AMA Specifications Form—Passenger Car

MAKE OF CAR Cadillac MODEL YEAR 1972 DATE ISSUED 9/1/71 REVISED (*)

MODEL Eldorado

ENGINE – LUBRICATION SYSTEM

Type of lubrication (splash, pressure, nozzle)	Main bearings	Pressure
	Connecting rods	Pressure
	Piston pins	Splash
	Camshaft bearings	Pressure
	Tappets	Pressure
	Timing gear or chain	Metered Centrifugal Flow
	Cylinder walls	Splash
Oil pump type		Spur Gear
Normal oil pressure (lb. engine rpm)		35-40 LB @ 30 MPH
Oil press. sending unit (elect. or mech.)		Electric
Type oil intake (floating, stationary)		Stationary
Oil filter system (full flow, part., other)		Full Flow
Filter replacement (element, complete)		Complete
Capacity of c/case, less filter-refill (qt.)		5 Qts. + 1 Qt. for Filter
Oil grade recommended (SAE viscosity and temperature range)		Above + 20°F 20W - 10W30 - 10W40 - 20W40 0 to + 60° 10W - 6W30 - 10W30 - 10W40 Below + 20° F 5 W20 - 5W30
Engine Service Reqmt. (MM, MS, etc.)		SE

ENGINE – EXHAUST SYSTEM

Type (single, single with cross-over, dual, other)		Single with Crossover
Muffler No. & type (reverse flow, straight thru, separate resonator)		One Reverse Flow with Seperate Resonator
Exhaust pipe dia. (O.D., wall thick.)	Branch	Exhaust 2.24 .036 - .048 Laminated
	Main	Intermediate 2.50 .036 - .048 Laminated
Tail pipe dia. (O.D. & wall thickness)		2.25 - .075 Aluminized

AMA Specifications Form—Passenger Car

MAKE OF CAR Cadillac MODEL YEAR 1972 DATE ISSUED 9/1/71 REVISED (e)

MODEL Eldorado

ENGINE - FUEL SYSTEM

(See supplemental page for Details of Fuel Injection, Supercharger, etc. if used)

Induction type: Carburetor, fuel injection, supercharger.			Carburetor
Fuel Tank	Refill capacity (U.S. gals.)		27 Gal.
	Filler location		Back of License Plate
Fuel Pump	Type (elec. or mech.)		Mechanical
	Locations		Lower Left Side of Eng.
	Pressure range		5.25 - 6.50 @ 1800
Vacuum booster (std., optional, none)			None
Fuel Filter	Type		A/C Spark Plug Div.
	Locations		In Fuel Pump and in Fuel Tank
Carburetor	Choke type		Remote Pocket in Manifold
	Intake manifold heat control (exhaust or water)		Exhaust (No Heat Valve)
	Air cleaner type	Standard	Dry Pack Single Inlet
		Optional	-
	Idle speed (spec. neutral or drive)	Manual	-
		Automatic	600 R.P.M. Drive A/C off
		Idle A/F mix.	-

CARBURETOR SUPPLEMENTARY INFORMATION

Model Usage	Engine Displ.	Transmission	Carburetors		No. Used and Type	Barrel Size
			Make	Model		
Eldorado	500	Turbo Hydramatic	Ruch	4BBL	1	

AMA Specifications Form—Passenger Car

MAKE OF CAR Cadillac MODEL YEAR 1972 DATE ISSUED 9/1/71 REVISED (•)

MODEL Eldorado

ENGINE - COOLING SYSTEM

Type system (pressure, pressure vented, atmospheric, other)		Pressure	
Radiator cap relief valve pressure		13.5 - 16.5 P.S.I.	
Circulation thermostat	Type (choke, bypass)	By-Pass	
	Starts to open at (°F)	177° - 182°	
Water pump	Type (centrifugal, other)	Centrifugal - Dual Outlet	
	GPM 1000 pump rpm	19	
	Number of pumps	One	
	Drive (V-belt, other)	V-Belt	
	Bearing type	Double Row Ball Bearing	
By-pass recirculation type (inter., ext.)		Internal	
Radiator core type (cellular, tube and fin, other)		Tube & Center	
Cooling system capacity	With heater (qt.)	21.3	
	Without heater (qt.)	Heater - STD Equip.	
	Opt. equipment-specify (qt.)	21.8 with A/C	
Water jackets full length of cyl. (yes, no)		Yes	
Water all around cylinder (yes, no)		Yes	
Radiator hose	Lower	Number and type (molded, straight)	1 - Molded
		Inside diameter	1.50
	Upper	Number and type (molded, straight)	1 - Molded
		Inside diameter	1.50
	By-pass	Number and type (molded, straight)	None
		Inside diameter	None
	Fan	Number of blades & spacing	7@ 61° - 53° - 40° - 67° - 36° - 67° - 36°
		Diameter	18"
Ratio-fan to crankshaft rev.		1.24:1	
Fan cutout type		None	
Bearing type		None	
* Drive belts (indicate belt used by letter)	Fan	A	
	Generator or alternator	B	
	Water Pump	A	
	Power Steering	C	
	Air Conditioning	C Two Matched Belts	
Air Pump		A	

* Drive Belt Dimensions	A	B	C	D	E	F	G	H	I	J
Angle of V	38°	38°	38°							
Nominal length (SAE)	45.2	37.5	59.5							
Width	.460	.460	.380							

AMA Specifications Form—Passenger Car

MAKE OF CAR Cadillac MODEL YEAR 1972 DATE ISSUED 9/1/71 REVISED (*)MODEL Eldorado

VEHICLE EMISSION CONTROL

Exhaust Emission Control	Type (Air injection, engine modifications, other)		Air Injection
	Air Injection Pump	Type	Semi-Articulated Vane
		Displacement	19.3 Cu. in/Rev.
		Drive ratio	1.2:1
		Drive type	Belt
		Relief valve (type)	Spring Loaded Valve
		Filter (describe)	Centrifugal
	Air Injection System	Air distribution (head, manifold, etc.)	Cylinder Heads
		Point of entry	Cylinder Heads
		Injection tube i.d.	.250
		Check valve type	Elastomer Disc and Plate
		Backfire protection (type)	Diverter Valve
Crankcase Emission Control	Type (ventilates to atmos., induction system, other)		Induction
			None
	Control Unit	Make and model	A/C Spark Plug Div.
		Location	-
		Energy source (manifold vacuum, carburetor, other)	Manifold Vacuum
		Control method (variable orifice, fixed orifice, other)	Spring Loaded Valve - Variable Orif
	Complete system	Discharges (to intake manifold, other)	Intake Manifold
		Air inlet (breather cap, other)	Air Cleaner
		Flame arrestor (screen, other)	Check Valve
Evaporative Emission Control	Fuel Tank	Refill Capacity (U.S. gallons)	27 Gal.
		Thermal expansion volume (cu. ft.)	.45 Cu. Ft.
		Pressure relief location (lbs.)	Cap 25-35 in. water
		Vacuum relief location (lbs.)	Cap 7-70 in. water
		Vapor-liquid separator type	Standpipe
		Vapor vented to (crankcase, canister, other)	Charcoal Canister
	Carbu- retor	Vapor vented to (crankcase, canister, other)	Internal
	Vapor Storage	Storage provision (crankcase, canister, other)	Charcoal Canister
		Volume (cu. ft.) or capacity (grams)	600 Grams
		Control valve type	Carburetor - Purge

AMA Specifications Form—Passenger Car

MAKE OF CAR Cadillac MODEL YEAR 1972 DATE ISSUED 9/1/71 REVISED (*)

MODEL Eldorado

ELECTRICAL – SUPPLY SYSTEM

Battery	Make and Model		Delco Remy
	Voltage Rtg. & Total Plates		12 Volt - 15 Plate
	SAE Designation & Amp. Hr. Rtg.		3600 Watts @ 0°
	Location		Radiator Cradle Right Front Side - Underhood
	Terminal grounded		Negative
Generator or Alternator	Make		Delco Remy
	Model		1100940 1100937 A/C
	Type and rating		42 AMP 63 AMP
	Output at engine idle (neutral)		Charge @ Idle
	Ratio—Gen. to Cr.'s rev.		3.25:1
Regulator	Make		Integral Part of Generator
	Model		
	Type		
	Cutout relay	Closing voltage generator rpm	
		Reverse current to open	
	Regu- lated	Voltage	
		Current	
	Voltage test conditions	Temperature	
		Load	
		Other	

ELECTRICAL – STARTING SYSTEM

Starting Motor	Make		Delco Remy	
	Model		1108352	
	Rotation (drive end view)		Clockwise	
Motor control	Switch (solenoid, manual)		Solenoid	
	Starting procedure		See Below	
Motor Drive	Engagement type		Spiral Spline and Over Running Clutch	
	Pinion meshes (front, rear)		Front	
	Number of teeth	Pinion	9	
		Flywheel	Manual Auto.	N.A. 166
	Flywheel tooth face width		Manual Auto.	N. A. .500

Place Trans. in Park or Neutral

Cold Start - Depress Acc. to floor - Release, Turn Ignition Key to start position

Warm Start - Depress Acc Halfway to floor - Hold - Turn Ignition Key to start position

AMA Specifications Form—Passenger Car

MAKE OF CAR Cadillac MODEL YEAR 1972 DATE ISSUED 9/1/71 REVISED (•)

MODEL Eldorado

ELECTRICAL – IGNITION SYSTEM

Type	Conventional – Std., Opt., N.A.		STD
	Transistorized – Std., Opt., N.A.		N.A.
	Other (specify)		-
Coil	Make		Delco Remy
	Model		1115295
	Amps	Engine stopped	2.40
		Engine idling	1.25
Spark Plug	Make		AC Spark Plug Div.
	Model		R-46N
	Thread (mm)		14 MM
	Tightening torque (lb. ft.)		25 lb. ft.
	Gap		.035
Cable	Conductor type		Resistant Core
	Insulation type		Neoprene
	Spark plug protector		Hypalon

ELECTRICAL – SUPPRESSION

Locations & type

See Below

ELECTRICAL – INSTRUMENTS AND EQUIPMENT

Speedometer	Type	AC Spark Plug
	Trip odometer (std. opt., N.A.)	STD
Charge indicator – type		Tell Tale
Temperature indicator – type		Tell Tales (Coolant & Engine Metal)
Oil pressure indicator – type		Tell Tale
Fuel indicator – type		Gauge
Windshield wiper	Type – Standard	3-Speed Electric
	Type – Optional	-
Windshield washer	Type – Standard	Electric
	Type – Optional	-
Horn	Type	Solenoid Vibrating – Diaphragm F-A-D
	Number used	3
	Amp draw (each)	5.2
Other		Trunk Warning Lite - Low Brake - Cruise - Low Dash

Packard Electric - Dist. Resistance Wire
 .3 MFD on Coil Feed Terminal
 .5 MFD on Gen. Reg. Feed Terminal
 Ground Straps - Trans. to dash

AMA Specifications Form—Passenger Car

MAKE OF CAR Cadillac MODEL YEAR 1972 DATE ISSUED 9/1/71 REVISED (*)MODEL Eldorado

DRIVE UNITS – CLUTCH (Manual Transmission)

Make & type	Not Available
Type pressure plate springs	
Total spring load (lb.)	
No. of clutch driven discs	
Clutch facing	Material
	Outside & inside dia.
	Total eff. area (sq. in.)
	Thickness
	Engagement cushioning method
Release bearing	Type & method of lubrication
Torsional damping	Methods: springs, friction material

DRIVE UNITS – TRANSMISSIONS

Manual 3-speed (std., opt. N.A.)	N. A.
Manual 4-speed (std., opt. N.A.)	N. A.
Automatic (std., opt. N.A.)	STD

DRIVE UNITS – MANUAL TRANS.

Number of forward speeds	Not Available	
Transmission ratios	In first	
	In second	
	In third	
	In fourth	
	In reverse	
Synchronous meshing, specify gears		
Shift lever location		
Lubricant	Capacity (pt.)	
	Type recommended	
	SAE viscosity number	Summer
		Winter
	Extreme cold	

MAKE OF CAR Cadillac MODEL YEAR 1972 DATE ISSUED 9/1/71 REVISED ^(*)MODEL Eldorado

DRIVE UNITS — AUTOMATIC TRANSMISSION

Trade name	Turbo Hydramatic	
Type describe	3 Speed Fixed Converter With Step Gear Shift	
Selector location	Indicator in Cluster Above Strg. Col.	
List gear ratios Selector Pattern and indicate which are used in each selector position	P-R-N-'D'-L	LO Gear 2.48 Intermediate 1.48 High Gear 1.00 Reverse 2.09
Max. upshift speed—drive range	76	MPH
Max. kickdown speed—drive range	70	MPH
Torque converter	Number of elements	3
	Max. ratio at stall	2.03
	Type of cooling (air, liquid)	Liquid - Water - To Oil
	Nominal diameter	13.038
Lubricant	Capacity—refill (pt.)	Approx. 11 pts.
	Type recommended	Fluid - Dexron
Special transmission features	Driven through a chain from Eng. Mount Converter	

DRIVE UNITS — PROPELLER SHAFT

Number used	Two (1 Piece Right and Left)	
Type (straight tube, tube-in-tube, internal-external damper, etc.)	Exposed	
Outer diam. x length* x wall thick- ness	Manual 3-speed trans.	N.A.
	Manual 4-speed trans.	N. A.
	Overdrive transmission	N. A.
	Automatic transmission	1.25 X 17.05 Solid

* Center to center of universal joints, or to centerline of rear attachment.

(Continued)

AMA Specifications Form—Passenger Car

MAKE OF CAR Cadillac MODEL YEAR 1972 DATE ISSUED 9/1/71 REVISED (a)MODEL Eldorado

DRIVE UNITS — PROPELLER SHAFT (cont.)

Inter-mediate bearing	Type (plain, anti-friction)	None	
	Lubrication (fitting, prepack)		
Slip Yoke	Type		
	Number of teeth		
	Spline O.D.		
Universal joints	Make and Mfg. No.	Saginaw	
	Number used	4 Joints	
	Type (ball and trunnion, cross)	(2) Tri-Pot Ball & Trunnion (2) Rzeppa (outboard)	
	Rear attach. (u-bolt, clamp, etc.)		
	Bearing	Type (plain, anti-friction)	Needle Rollers with Tri-Pot Joints Ball with Rzeppa Joints
		Lubric. (fitting, prepack)	Pre-Packed (Permanent)
Drive taken through (torque tube or arms, springs)		Frnt. Suspension	
Torque taken through (torque tube or arms, springs)		Eng. Supports	

DRIVE UNITS — AXLE

Type (front, rear)		Front	
Description			
Limited Slip differential, type		Not Available	
Drive Pinion Offset		None	
No. of differential pinions		2	
Pinion adjustment (shim, other)		Shim	
Pinion bearing adj. (shim, other)		Shim	
Wheel bearing type		Not Available	
Lubricant	Capacity (pt.)	4 Pints	
	Type recommended	Extreme Pressure Mineral Oil	
	SAE vis- cosity number	Summer	90
		Winter	90
		Extreme cold	90

AXLE RATIO TOOTH COMBINATIONS

(See page 4 for axle ratio usage)

Axle ratio		3.07
No. of teeth	Pinion	14
	Ring gear	43
Ring Gear O.D.		9.947

AMA Specifications Form—Passenger Car

MAKE OF CAR Cadillac MODEL YEAR 1972 DATE ISSUED 9/1/71 REVISED ^(*)

MODEL Eldorado

DRIVE UNITS — TIRES AND WHEELS (STANDARD)

TIRES	Size, load range, ply		L-78X15 Load Range B
	Type (bias, radial, etc.)		Belted Bias
	Normal max. load inflation pressure (cold)	Front	25 PSI
		Rear	20 PSI
	Rev./mile @ 45 mph		711
WHEELS	Type & material		Drop Center - Steel
	Rim (size & flange type)		15 X 6 JK
	Attachment	Type (bolt or stud)	STUD
		Circle diameter	5.00 In.
		Number & size	5- $\frac{1}{2}$ x 20
	Spare wheel (same or other)		Same

DRIVE UNITS— TIRES AND WHEELS (OPTIONAL)

Size, load range, ply		W.W.	L-78X15 Load Range B
Type (bias, radial, etc.)			Belted Bias
Normal max. load inflation pressure (cold)	Front		25 PSI
	Rear		20 PSI
Rev. mile @ 45 mph			711
Wheel type & material			Drop Center - Steel
Rim (size & flange type)			15 X 6 JK

DRIVE UNITS — TIRES AND WHEELS (OPTIONAL)

Size, load range, ply		
Type (bias, radial, etc.)		
Normal max. load inflation pressure (cold)	Front	
	Rear	
Rev. mile @ 45 mph		
Wheel type & material		
Rim (size & flange type)		

BRAKES — PARKING

Type of control		Foot Operated - Vac Released
Location of control		Left Side Below Inst. Panel
Operates on		Rear Service Brakes
If separate from service brakes	Type (internal or external)	N.A.
	Drum diameter	N.A.
	Lining size (length x width x thickness)	N.A.

AMA Specifications Form—Passenger Car

MAKE OF CAR Cadillac MODEL YEAR 1972 DATE ISSUED 9/1/71 REVISED (a)MODEL Eldorado

BRAKES—SERVICE

Type (drum) or (disc & no. of pistons)			Disc Front - Single Piston	Drum Rear
Self adjusting (std., opt., N.A.)			STD	
Special Valving	Type (proportion, delay, metering, other)		Metering - Front Proportioning Rear	
Power brake make & type (remote, int., etc.)	Std.	Opt.	Delco Tandem	
Effective area (sq. in.) *			38.36 F	80 R
Gross lining area (sq. in.) **			42.28 F	84 R
Swept area (sq. in.) ***			224.00 F	138 R
Effectiveness	Front		57%	
	Rear		69%	
Drum	Diameter (nominal)	Front	-	
		Rear	11.0	
	Type and material		Full Cast Iron Finned Drum	
Rotor	Outer working diameter		11.000	
	Inner working diameter		6.910	
	Thickness			
	Material & type (vented/solid)		Full Cast Iron - Vented	
Wheel cylinder bore	Front		2 15/16	
	Rear		15/16	
Master Cylinder	Bore		1.125	
	Stroke		1.475 - 1.530	
Pedal arc ratio			3.44:1	
Line pressure at 100 lb. pedal load			760 PSI	
Shoe Clearance	Front		None	
	Rear		.015	
Anti-skid device type (std., opt., N.A.)			Electronic & Vacuum - Opt.	
Brake lining	Bonded or riveted		Riveted	
	Front Wheel	Material	DM 5470 Molded Asbestos	
		Size (length x width x thickness)	5.4 X 1.93 X .41	
		Prim. or out-board	-	
		Second. or in-board	5.4 X 1.93 X .43	
			-	
		Segments per shoe	1	
	Rear Wheel	Material	Marshall H 3144 PRI & H3152 Sec Molded Asb.	
		Size (length x width x thickness)	9.00 X 2.00 X .20	
		Prim. or out-board	-	
Second. or in-board		12.00 X 2.00 X .20		
		-		
	Segments per shoe	1		

* Excludes rivet holes, grooves, chamfers, etc. ** Includes rivet holes, grooves, chamfers, etc.

*** Total swept area for four brakes. (Widest lining contact width for each brake x its contact circumference.)

AMA Specifications Form—Passenger Car

MAKE OF CAR Cadillac MODEL YEAR 1972 DATE ISSUED 9/1/71 REVISED (*)MODEL Eldorado

STEERING

Manual (std., opt., NA)				N.A.
Power (std., opt., NA)				STD
Adjustable steering wheel (tilt, swing, other)		Type and description (std., opt., NA)	Tilt and Telescope	
			OPT	
Wheel diameter		Manual	N.A.	
		Power	15.5	
			46.8	
Turning diameter (feet)	Outside front	Wall to wall (l. & r.)		
		Curb to curb (l. & r.)		
	Inside rear	Wall to wall (l. & r.)		
		Curb to curb (l. & r.)		
Manual	Gear	Type	N.A.	
		Make		
		Ratios	Gear	
		Overall		
	No. wheel turns (stop to stop)			
Power	Type (coaxial, linkage, etc.)		Coaxial	
	Make		Saginaw Steering Gear	
	Gear	Type	Rotary Valve - Recirculation Ball	
		Ratios	Gear	Variable Ratio 16.0 - 13.0
		Overall		16.1 - 14.3
		Pump driven by		Belt
	No. wheel turns (stop to stop)		2 3/4	
Linkage	Type		Parallelogram	
	Location (front or rear of wheels, other)		Front	
	Drag link (trans. or longit.)		Transverse	
	Tie rods (one or two)		Two	
Steering Axis	Inclination at camber (deg.)		11° @ 0	
	Bearings (type)	Upper	Spherical Joints	
		Lower	Spherical Joints	
		Thrust	Spherical Joints	
	Whl. Align. (range at curb wt. & preferred)	Caster (deg.)		-10° ± 1/2
Camber (deg.)		0° ± 3/8		
Toe-in (outside track inches)		0° ± 1/16		
Steering spindle & joint type				Spherical Joints
Wheel Spindle	Diameter	Inner bearing		
		Outer bearing		
	Thread size			
	Bearing type			

AMA Specifications Form—Passenger Car

MAKE OF CAR Cadillac MODEL YEAR 1972 DATE ISSUED 9/1/71 REVISED (*)

MODEL

Eldorado

SUSPENSION – GENERAL

(See Supplement page for details on Air Suspension)

Provision for car leveling	Front - Torsion Bar Adj. - Auto Level Control
Provision for brake dip control	In Front & Rear Suspension Geometries
Provision for acc. squat control	In Front Suspension Geometry
Special provisions for car jacking	Bumper Type
Shock absorber front & rear	Direct Action
Type	Delco
Make	1"
Piston dia.	
Other special features	Pliacell Air Reservoir, Rebound Cut Off Interegul Bump Stop in Front Shocks

SUSPENSION – FRONT

Type and description	Independent Torsion Bar
Spring	Type Torsion Bar
	Material SAE 5160H
	Size (coil design height & I.D. bar length x dia.) 1.055 Dia. X 53.20 Long Eff. Length
	Spring rate (lb. per in.) 439 lb-in./deg.
	Rate at wheel (lb. per in.) 115 lb/in.
Stabilizer	Type (link, linkless, frameless) Link
	Material & bar diameter SAE 1070 1 1/16 Dia.

SUSPENSION – REAR

Type and description	4 Link Coil Suspension - Dead Axle
Drive and torque taken through	Frnt. Wheel Drive
Spring	Type Coil
	Material SAE 9260 Steel
	Size (length x width, coil design height & I.D., bar length & dia.) 9.20 X 5.50 X 137.7 X .545
	Spring rate (lb. per in.) 92 lbs/in.
	Rate at wheel (lb. per in.) 92 lbs/in.
	Mounting insulation type Rubber
	If leaf No. of leaves N.A.
	Shackle (comp. or tens.) N.A.
Stabilizer	Type (link, linkless, frameless) N.A.
	Material & bar diameter N.A.
Track bar type	N.A.

AMA Specifications Form—Passenger Car A

MAKE OF CAR Chevrolet MODEL YEAR 1972 DATE ISSUED 9/1/71 REVISED (*)

MODEL

Eldorado

FRAME

Type and description (Separate frame, unitized frame, partially - unitized frame)

Seperate Perimeter Frame

BODY - MISCELLANEOUS INFORMATION

Drs. hinged (front, rr.)	Front doors	Front
	Rear doors	-
Type of finish (lacquer, enamel, other)		Acrylic
Hood counterbalanced (yes, no)		Yes
Hood release control (internal, external)		Internal
Vehicle Ident. No. location		Windshield Lower Frame - Left Side - Trans. Eng.
Engine No. location		Rear Upper Portion of Cyl. Block - L. Side of Trans.
Theft protection - type		Ign. Key Start - Strg. Col. Lock - Ing. Warning Buzzar
Vent window control method (crank, friction pivot)	Front	None
	Rear	None
Seat cushion type	Front	Zig-Zag Spring
	Rear	Zig-Zag Spring
	3rd seat	-
Seat back type	Front	Full Depth Foam
	Rear	Full Depth Foam
	3rd seat	-
Windshield glass type (i.e., single curved - laminated plate)		Compound Curve - Laminated
Side glass type (i.e., curved - tempered plate)		Curved Tempered
Backlight glass type (i.e., compound curved - tempered plate, three piece)		
Windshield glass exposed surface area	69347	Curved Tempered
Side glass exposed surface area	1511.4	69367
Backlight glass exposed surface area	1386.9	1445.1
Total glass exposed surface area	1022.4	1568.4
	3920.7	738.1
		3791.6

AMA Specifications Form—Passenger Car

Page 24

Page 24

MAKE OF CAR Cadillac MODEL YEAR 1972 DATE ISSUED 9/1/71 REVISED (a)

MODEL Eldorado

CONVENIENCE EQUIPMENT

(Indicate whether standard, optional or NA on each series)

Power windows	Side windows	STD
	Vent windows	N.A.
	Backlight or tailgate	N.A.
Power seats (specify type as well as availability)		2-Way Power STD
Reclining front seat back (R-L or both)		N.A.
Front seat head restrainer (R-L or both)		Both
Radios (specify type as well as availability)		AM/FM - AM/FM Stereo - OPT Stereo AM/FM Integral Tape -OPT
Rear seat speaker		STD with Radio
Power antenna		Part of Windshield - STD
Clock		STD
Air conditioner (specify type and availability)		Auto Climate Control - Optional
Speed warning device		N.A.
Speed control device		OPT.
Ignition lock lamp		N.A.
Dome lamp		STD
Glove compartment lamp		STD
Luggage compartment lamp		STD
Underhood lamp		N.A.
Courtesy lamp		STD
Map lamp		STD
Auto. trans. quad. lamp		STD
Cornering light lamp		STD
Rear window defroster electrically heated		STD - 69367
Rear window defogger		OPT - 69347
HTR & DEFGR Control Lite		STD

LAMP HEIGHT AND SPACING

Height above ground to center of bulb or marker	Headlamp (H125)	Highest *	27.35
		Lowest	27.35
	Tail (H126)	Highest	26.68
		Lowest	23.12
	Sidemarker	Front	20.83
		Rear	24.90
Distance from C. L. of car to center of bulb	Headlamp	Inside	21.67
		Outside	28.06
	Tail	Inside	35.66
		Outside	35.66
	Directional	Front	35.66
		Rear	35.66

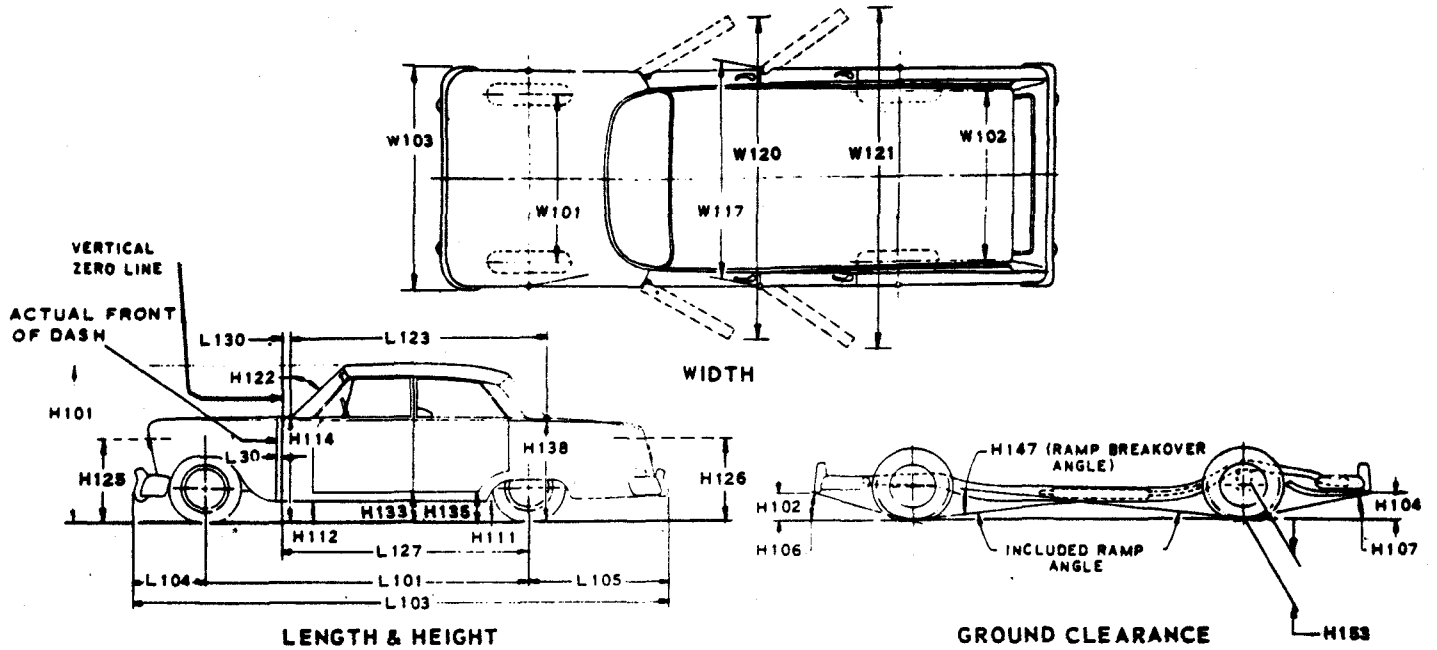
* If single headlamps are used enter here.

VEHICLE WEIGHTS

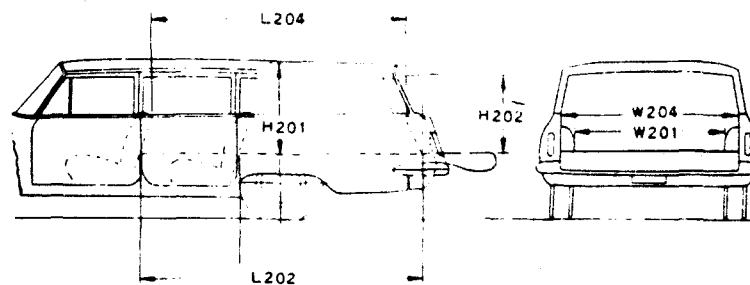
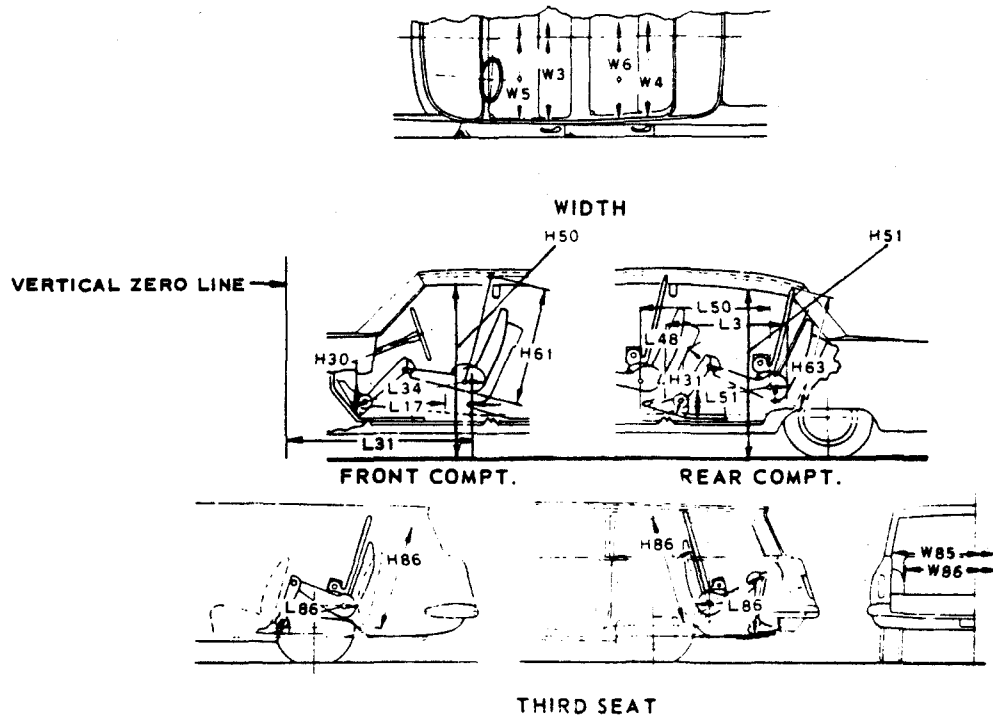
OPTIONAL EQUIPMENT WEIGHTS

Form Rev. 3-71

CAR AND BODY DIMENSIONS KEY SHEET EXTERIOR CAR AND BODY DIMENSIONS



INTERIOR CAR AND BODY DIMENSIONS



**EXTERIOR CAR AND BODY DIMENSIONS
KEY SHEET
DIMENSION DEFINITIONS**

WIDTH DIMENSIONS.

- W101 WHEEL TREAD - FRONT. Measured at centerline of tires, with nominal camber, at ground.
- W102 WHEEL TREAD - REAR. Measured at centerline of tires at ground.
- W103 MAXIMUM OVERALL CAR WIDTH. Include bumpers, moldings, or sheet metal protrusions. Measured to outside of metal.
- W117 MAXIMUM BODY WIDTH AT #2 PILLAR. Measured across body at #2 pillar, excluding hardware and applied moldings.
- W120 MAXIMUM OVERALL CAR WIDTH, FRONT DOORS OPEN is measured to outside of sheet metal with front doors in maximum hold-open position.
- W121 MAXIMUM OVERALL CAR WIDTH, REAR DOORS OPEN is measured in same manner as W120.

LENGTH DIMENSIONS.

- L30 VERTICAL ZERO LINE TO ACTUAL FRONT OF DASH. If actual Front of Dash is to the rear of Body Zero Line, it is identified by a minus (-) sign.
- L101 WHEELBASE.
- L103 OVERALL LENGTH. Include bumper guards if standard equipment.
- L104 OVERHANG - FRONT. Measured from C/L of front wheels to front of car, including bumper guards if standard equipment.
- L105 OVERHANG - REAR. Measured from C/L of rear wheels to rear of car, including bumper guards if standard equipment.
- L123 BODY UPPER STRUCTURE LENGTH AT CAR CENTERLINE. The horizontal dimension from the Cowl Point to the Deck Point.
- L127 VERTICAL ZERO LINE TO CENTERLINE OF REAR WHEELS. A horizontal dimension.
- L130 VERTICAL ZERO LINE TO WINDSHIELD COWL POINT. The horizontal dimension from the vertical zero line to the theoretical intersection of extended windshield glass plane and normal cowl surface.

HEIGHT DIMENSIONS

- H101 OVERALL HEIGHT - DESIGN. Measured with the vehicle in Manufacturer's Design Weight attitude.
- H114 COWL POINT TO GROUND. Measured at vehicle centerline.
- H138 DECK POINT TO GROUND. Measured at vehicle centerline.
- H112 ROCKER PANEL TO GROUND - FRONT. The vertical dimension from ground to bottom of rocker panel, excluding flanges. Measured to the outside of sheet metal at foremost point of rocker panel.

- H133 BOTTOM OF DOOR TO GROUND, CLOSED - FRONT is the same point on the door as H132 dimension, with door closed.

- H111 ROCKER PANEL TO GROUND - REAR. The vertical dimension from ground to bottom of rocker panel, excluding flanges. Measured to the outside of sheet metal at front of rear wheel opening.

- H135 BOTTOM OF DOOR TO GROUND, CLOSED - REAR is measured in same manner as H133.

- H122 WINDSHIELD SLOPE ANGLE. The angle between a vertical line and the windshield surface at car centerline. On compound-curved windshields the chord of the arc is used and limited to that section of the windshield comprehended by an 18-inch chord.

- H125 HEADLAMP CENTERLINE TO GROUND is measured vertically to the center of the upper lamp.

- H126 TAILLAMP CENTERLINE is measured vertically from ground to the centerline of the upper bulb.

GROUND CLEARANCE DIMENSIONS

- H102 BUMPER TO GROUND - FRONT. Minimum dimension, includes bumper guards.

- H104 BUMPER TO GROUND - REAR. Minimum dimension, includes bumper guards.

- H106 ANGLE OF APPROACH. The angle between ground and a line tangent to the front tire static loaded radius arc and the first point of interference, i.e., bumper, guard, gravel deflector, fender or other component, excluding license plate. This dimension may be determined graphically for reporting purposes.

- H107 ANGLE OF DEPARTURE. The angle between ground and a line tangent to the rear tire static loaded radius arc and the first point of interference, i.e., bumper, guard, gravel deflector, tail pipe, fender or other component, excluding license plate. This dimension may be determined graphically for reporting purposes.

- H147 RAMP BREAKOVER ANGLE. The supplement of included ramp angle (180° minus included ramp angle) over which car can pass without interference; measured with car sitting on a level surface, using lines tangent to arcs of front and rear static loaded radii and intersecting at point on underside of car which defines the smallest angle.

- H153 REAR AXLE DIFFERENTIAL SYSTEM TO GROUND is a minimum clearance.

- H156 MINIMUM RUNNING GROUND CLEARANCE. Location of measurement on the car is to be clearly recorded.

**INTERIOR CAR AND BODY DIMENSIONS
KEY SHEET
DIMENSION DEFINITIONS**

FRONT COMPARTMENT DIMENSIONS

- L31 H POINT TO VERTICAL ZERO LINE - FRONT** is a horizontal dimension.
- H61 EFFECTIVE HEAD ROOM - FRONT.** The dimension from H Point to the headlining, plus a constant of 4.0 inches, measured along a line 8° to rear of vertical.
- L34 MAXIMUM EFFECTIVE LEG ROOM-ACCELERATOR.** Measured along a diagonal line from the Manikin ankle pivot center to the H Point plus a constant of 10.0 inches. For treadle type accelerator pedals, the leg room is measured with the Manikin's right foot on the accelerator pedal and the Manikin Heel Point at Accelerator Heel Point. All other types of accelerator pedals will be measured with the Manikin foot angle set at 87° and the shoe touching the pedal.
- H30 H POINT TO HEEL POINT - FRONT.** The vertical dimension from the H Point to the Accelerator Heel Point.
- L17 H POINT TRAVEL.** The horizontal dimension between the H Point in the most forward and rearward seat positions.
- W3 SHOULDER ROOM - FRONT.** The minimum lateral dimensions between the door garnish moldings or nearest interference, measured at the H Point station.
- W5 HIP ROOM - FRONT.** The lateral dimension through the H Point to trimmed body surfaces. Depress loose side wall cloth to trim foundation or other obstruction if such construction exists.
- H50 UPPER BODY OPENING TO GROUND - FRONT.** The vertical dimension from a point on the trimmed body opening to the ground, measured at the H Point station.
- REAR COMPARTMENT DIMENSIONS**
- L50 H POINT COUPLE DISTANCE.** The horizontal dimension from the front seat H Point to the rear seat H Point.
- H63 EFFECTIVE HEAD ROOM - REAR.** The dimension from the H Point to the headlining, plus a constant of 4.0 inches, measured along a line 8° to rear of vertical.
- L51 MINIMUM EFFECTIVE LEG ROOM - REAR.** Measured along a diagonal line from the ankle pivot center to the H Point plus a constant of 10.0 inches, with the foot positioned to the nearest interference between the seat structure and toe, instep or lower leg.
- H31 H POINT TO HEEL POINT - REAR.** The vertical dimension from the H Point to the Manikin Heel Point on the depressed floor covering.
- L48 MINIMUM KNEE ROOM - REAR.** The minimum dimension from the Manikin knee pivot center to the back of the front seat back.
- L3 REAR COMPARTMENT ROOM.** The horizontal dimension from the back of front seat to front of rear seat back at height tangent to the top of rear seat cushion.
- W4 SHOULDER ROOM - REAR.** The minimum lateral dimension between the door garnish molding or nearest interference. Measured at H Point station.
- W6 HIP ROOM - REAR.** The lateral dimension through H Point to trimmed body surfaces. Depress loose side wall cloth to trim foundation or other obstruction when such construction exists.
- H51 UPPER BODY OPENING TO GROUND - REAR.** The vertical dimension from a point on the trimmed body opening to the ground, measured 13.0 inches forward of the H Point.

LUGGAGE COMPARTMENT DIMENSIONS

- V1 LUGGAGE CAPACITY - USABLE.** The total luggage compartment luggage capacity in cubic feet with the tire and tools in place.
- H195 LIFTOVER HEIGHT.** Vertical dimension from the highest point on the luggage compartment lower opening to ground, excluding corner radii.
- STATION WAGON - THIRD SEAT DIMENSIONS**
- W85 SHOULDER ROOM - THIRD SEAT.** The minimum lateral dimension between the door garnish moldings or nearest interference. Measured at H Point station.
- W86 HIP ROOM - THIRD SEAT.** The lateral dimension through H Point to trimmed surfaces.
- L86 EFFECTIVE LEG ROOM - THIRD SEAT.** Measured along a diagonal line from ankle pivot center to H Point plus a constant of 10.0 inches. With rear-facing third seat, foot is positioned in foot well or to nearest interference with rear end or rear closure.
- H86 EFFECTIVE HEAD ROOM - THIRD SEAT.** The dimension from H Point to the headlining, plus a constant of 4.0 inches. Measured along a line 8° to rear of vertical.

STATION WAGON - CARGO SPACE DIMENSIONS

- L202 CARGO LENGTH AT FLOOR - FRONT SEAT.** The horizontal dimension, measured at the floor level from the rear of the front seat back to the normal inside limiting interference on the tailgate, on the car centerline.
- L204 CARGO LENGTH AT BELT - FRONT SEAT.** The horizontal dimension measured from the top rear of front seat back to a vertical extension line from the normal inside limiting interference at the top of the tailgate, on the car centerline.
- W201 CARGO WIDTH - WHEELHOUSE.** The minimum horizontal dimension, measured between wheel housings at floor level.
- W204 OPENING WIDTH AT BELT.** The minimum horizontal dimension, measured between the nearest normal inside limiting interferences of the rear opening at the top of the tailgate.
- H201 MAXIMUM CARGO HEIGHT.** The maximum vertical dimension, measured from the top of the floor covering to the headlining, on the car centerline.
- H202 REAR OPENING HEIGHT.** The vertical dimension measured from the top of the floor covering to the normal inside limiting interference at the top of the rear opening, on the car centerline, with both tail-and liftgates fully open.
- V2 CARGO VOLUME INDEX BEHIND FRONT SEAT.** The total volume in cubic feet above the normal load floor and behind the front seat with the liftgate and tailgate closed.

W4xL204xH201
1728

INDEX

SUBJECT	PAGE NO.
Automatic Transmission.....	17
Axis, Steering	21
Axle, Rear	18
Battery	13
Bearings, Engine	5, 6, 7
Belts - Fan, Generator, Water Pump	11
Brakes - Parking, Service	19, 20
Camber	21
Camshaft	7
Capacities	
Cooling System	11
Fuel Tank	10
Lubricants	
Engine Crankcase	9
Transmission and Overdrive	16, 17
Rear Axle	18
Car and Body Dimensions	
Width	2
Length	2
Height	2
Ground Clearance	2
Front Compartment	3
Rear Compartment	3
Luggage Compartment	3
Station Wagon - Third Seat	3
Station Wagon - Cargo Space	3
Carburetor	4, 10, 12
Caster	21
Choke, Automatic	10
Clutch - Pedal Operated	16
Coil, Ignition	15
Connecting Rods	6
Convenience Equipment	24
Cooling System	11
Crankcase Ventilation System	12
Crankshaft	7
Cylinders and Cylinder Head	5
Dimension Definitions	
Key Sheet - Exterior	27, 28
Key Sheet - Interior	27, 29
Distributor - Ignition	14
Electrical System	13, 14, 15
Engine	
Bore, Stroke, Displacement, Type	5
Compression Ratio	4, 5
Firing Order, Cylinder Numbering	5
General Information, H.P. & Torque	4, 5
Lubrication	9
Power Teams	4
Exhaust Emission Control	12
Exhaust System	9
Equipment Availability	24
Fan, Cooling	11
Filters - Engine Oil, Fuel System	9, 10
Frame	23
Front Suspension	22
Fuel, Fuel Pump, Fuel System	5, 10
Fuel Injection	10
Generator and Regulator	13
Glass	23
Height (Lamps)	24
Headroom - Body	3
Heights - Car and Body	2
Horns	15
Horsepower - Brake	4
Ignition System	14
Inflation - Tires	19
Instruments	15

SUBJECT	PAGE NO.
Kingpin (Steering Axis)	21
Lamp height and spacing	24
Legroom	3
Lengths - Car and Body	2
Lifters, valve	8
Linings - Clutch, Brake	16, 20
Lubrication	9, 16, 17, 18
Luggage Compartment	3
Motor, Starting	13
Muffler	9
Piston Pins & Rings	5, 6
Pistons	5, 6
Power Brakes	20
Power Steering	21
Power Teams	4
Propeller Shaft, Universal Joints	17, 18
Pumps - Oil, Fuel	9, 10
Water	11
Radiator, Hoses	11
Ratios - Axle	4, 18
Compression	4, 5
Steering	21
Transmission	16, 17
Rear Axle	4, 18
Regulator - Generator	13
Rims	19
Rings, Piston	6
Rods - Connecting	
Shock Absorbers, Front & Rear	22
Spark Plugs	15
Speedometer	15
Springs - Front & Rear Suspension	22
Stabilizer (Sway Bar) - Front & Rear	22
Starting System	13
Steering	21
Supply System	13
Suppression - Ignition, Radio	15
Suspension - Front & Rear	22
Tail Pipe	9
Thermostat, Cooling	11
Timing, Engine & Valve	8, 14
Tires	19
Toe in	21
Torque Converter	17
Torque - Engine, Rated	4
Transmission - Types	4, 10, 16, 17
Automatic	4, 10, 16, 17
Manual	4, 10, 16
Ratios	16, 17
Track	2
Trunk Luggage Capacity	3
Turning Diameter	21
Unitized Construction	23
Universal Joints, Propeller Shaft	17, 18
Valves - Intake & Exhaust	8
Vibration Damper	7
Voltage Regulator	13
Water Pump	
Weights	21
Wheel Alignment	
Wheelbase	2
Wheels & Tires	19
Wheel Spindle	21
Widths - Car and Body	2
Windshield	23
Windshield Wiper	15