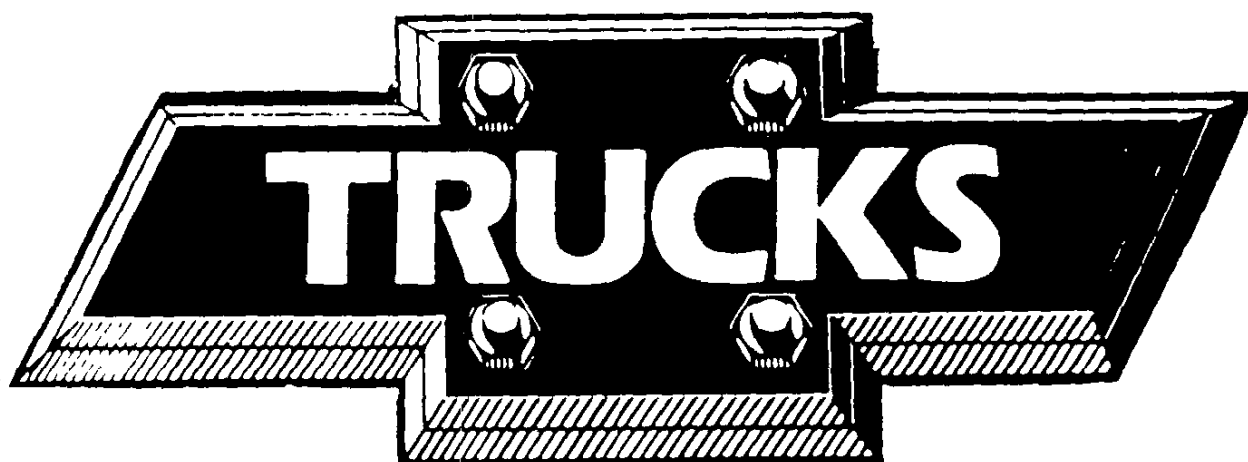




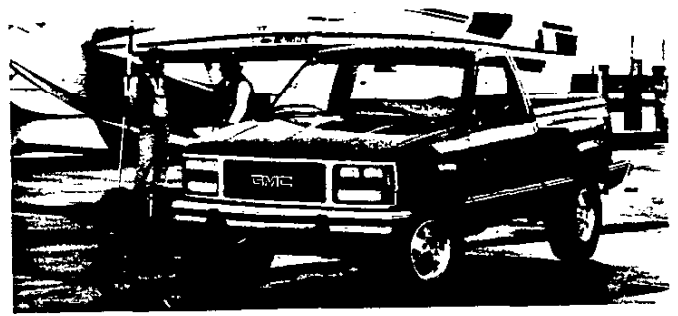
CHEVROLET



1989



C/K PICKUP



CONTENTS

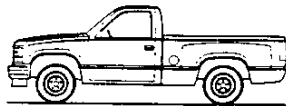
	<u>Page</u>
MODEL SELECTION	2
CHEYENNE/SL	6
SCOTTSDALE/SLX (Z62)	7
SILVERADO/SLE (YE9)	8
POWERTEAMS	9
SPECIFICATIONS	13
OPTIONAL EQUIPMENT	28
FEATURES TO SELL	33
COLOR AND TRIM	34
TRAILERING	40

MODELS

KEY: RED PRINT INDICATES NOT AVAILABLE IN CALIFORNIA
 BOLD PRINT INDICATES NOT AVAILABLE W/HIGH ALTITUDE EMISSIONS

TWO-WHEEL DRIVE (C)

C1500 4X2 REGULAR CAB SPORTSIDE

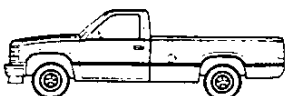


BOX (FT.)	GVWR RANGE (LBS.)	MAX. PAYLOAD (LBS.)	AVAIL. TRIM	STD. ENGINE/TRANS	OPT. ENGINE/TRANS	MODEL NUMBER
6.5'	5600	1899	All	4.3L V6/M5	4.3L V6/A4/A3 5.0L V8/M5/A4/A3 5.7L V8/M5/A4	C10703/ E62

C1500 REGULAR CAB SPORTSIDE

The Sportside features a specialized cargo bed design with a fully-rectangular cargo box on the inside, and fiberglass side panels flanked by running board steps on the outside.

C1500 4X2 REGULAR CAB FLEETSIDE/WIDESIDE



BOX (FT.)	GVWR RANGE (LBS.)	MAX. PAYLOAD (LBS.)	AVAIL. TRIM	STD. ENGINE/TRANS	OPT. ENGINE/TRANS	MODEL NUMBER
6.5'	5600	1908	All	4.3L V6/M5	4.3L V6/A4/A3 5.0L V8/M5/A4/A3 5.7L V8/M5/A4	C10703/ E63
8'	5600	1837	All	4.3L V6/M5	4.3L V6/M4/A4/A3 5.0L V8/M5/A4/A3 5.7L V8/M4/M5/A4	C10903/ E63

C1500 REGULAR CAB FLEETSIDE/WIDESIDE

The C1500 Fleetside/Wideside is the most popular full-size model. It's available with a 6.5-foot or 8-foot cargo box, a variety of powertrains and GVWR's to meet the needs of today's truck buyer.

C1500 4X2 EXTENDED CAB FLEETSIDE/CLUB COUPE WIDESIDE

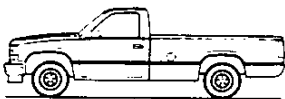


BOX (FT.)	GVWR RANGE (LBS.)	MAX. PAYLOAD (LBS.)	AVAIL. TRIM	STD. ENGINE/TRANS	OPT. ENGINE/TRANS	MODEL NUMBER
6.5'	6200	2210	All	4.3L V6/M5	4.3L V8/A4/A3 5.0L V8/M5/A4/A3	C10753/ E63
8'	6200	2109	All	4.3L V6/M5	4.3L V6/M4/A4/A3 5.0L V8/M5/A4/A3 5.7L V8/M4/M5/A4	C10953/ E63

C1500 EXTENDED CAB FLEETSIDE/CLUB COUPE WIDESIDE

The C1500 Extended Cab/Club Coupe model offers a cab design with a generous amount of secure in-cab storage behind the front seat and a choice of a 6.5-foot or 8-foot cargo box. An optional three passenger rear seat is available.

C2500 4X2 REGULAR CAB FLEETSIDE/WIDESIDE

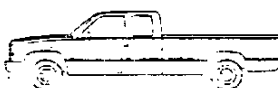


BOX (FT.)	GVWR RANGE (LBS.)	MAX. PAYLOAD (LBS.)	AVAIL. TRIM	STD. ENGINE/TRANS	OPT. ENGINE/TRANS	MODEL NUMBER
8'	7200	3291	All	4.3L V6/M5	4.3L V6/M4/A4/A3 5.0L V8/M5/A4/A3 5.7L V8/M4/M5/A4	C20903/ E63
8'	8600	4245	All	5.7L V8/M4	5.7L V8/A3	C20903 E63/C6P
8'	8600	3947	All	6.2L V8/M4	6.2L V8/A3	C20903 E63/B3J/ C6P

C2500 REGULAR CAB FLEETSIDE/WIDESIDE

The C2500 Regular Cab offers increased available GVWR capacity over the C1500 series.

C2500 4X2 EXTENDED CAB FLEETSIDE/CLUB COUPE WIDESIDE



BOX (FT.)	GVWR RANGE (LBS.)	MAX. PAYLOAD (LBS.)	AVAIL. TRIM	STD. ENGINE/TRANS	OPT. ENGINE/TRANS	MODEL NUMBER
6.5'	7200	3076	All	4.3L V6/M5	4.3L V6/M4/A4/A3 5.0L V8/M5/A4/A3 5.7L V8/M5/M4/A4	C20753/ E63
8'	7200	3015	All	4.3L V6/M5	4.3L V6/M4/A4/A3 5.0L V8/M5/A4/A3 5.7L V8/M4/M5/A4	C20953/ E63
8'	8600	3667	All	6.2L V8/M4	6.2L V8/A3	C20953 E63/B3J C6P

C2500 EXTENDED CAB FLEETSIDE/CLUB COUPE WIDESIDE

The C2500 Extended Cab/Club Coupe offers the versatility of extended cab design coupled with the GVWR availability of the C2500 series. It is available with a 6.5-foot or 8-foot cargo box.

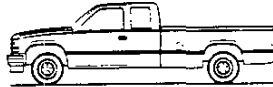
*TOTAL AVAILABLE FOR PEOPLE, EQUIPMENT, AND CARGO.

KEY: RED PRINT INDICATES NOT AVAILABLE IN CALIFORNIA
 BOLD PRINT INDICATES NOT AVAILABLE W/HIGH ALTITUDE EMISSIONS

TWO-WHEELDRIVE (C) (Cont.)

C3500 REGULAR CAB FLEETSIDE/WIDESIDE
 The C3500 Regular Cab Fleetside/Wideside offers high GVWR availability and power, including the 7.4-liter V8.

BOX (FT.)	GVWR RANGE (LBS.)	MAX' PAYLOAD (LBS.)	AVAIL. TRIM	STD ENGINE/TRANS	OPT ENGINE/TRANS	MODEL NUMBER
8'	8600	3870	All	7.4L V8/M4	7.4L V8 A3	C30903 E63



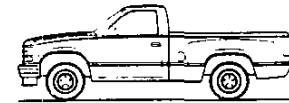
C3500 REGULAR CAB BIG DOOLEY/HEAVY HAULER w/DUAL REAR WHEELS
 The C3500 Big Dooley/Heavy Hauler option offers the highest GVWR available in the C/K pickup series. The Big Dooley/Heavy Hauler is equipped with dual rear wheels and plastic rear fender extensions.

BOX (FT.)	GVWR RANGE (LBS.)	MAX' PAYLOAD (LBS.)	AVAIL. TRIM	STD ENGINE/TRANS	OPT ENGINE/TRANS	MODEL NUMBER
8'	10,000	5253	All	5.7L V8/M4	5.7L V8 A3 7.4L V8 M4 A3	C30903 E63 R05
8'	10,000	4969	All	6.2L V8/M4	6.2L V8 M4	C30903 E63 B3J R05



C3500 EXTENDED CAB FLEETSIDE/CLUB COUPE WIDESIDE
 The C3500 Extended Cab/Club Coupe offers the versatility of extended cab design coupled with the GVWR capacity and engine availability of the C3500 series.

BOX (FT.)	GVWR RANGE (LBS.)	MAX' PAYLOAD (LBS.)	AVAIL. TRIM	STD ENGINE/TRANS	OPT ENGINE/TRANS	MODEL NUMBER
8'	8600	3606	All	7.4L V8/M4	7.4L V8 A3	C30953 E63



C3500 EXTENDED CAB BIG DOOLEY/CLUB COUPE HEAVY HAULER w/DUAL REAR WHEELS (R05)
 The C3500 Extended Cab Big Dooley/Club Coupe Heavy Hauler w/Dual Rear Wheels (R05) option offers the versatility of extended cab design, high GVWR, as well as dual rear wheels and plastic rear fender extensions.

BOX (FT.)	GVWR RANGE (LBS.)	MAX' PAYLOAD (LBS.)	AVAIL. TRIM	STD ENGINE/TRANS	OPT ENGINE/TRANS	MODEL NUMBER
8'	10,000	4990	All	5.7L V8/M4	5.7L V8 A3 7.4L V8 M4/A3	C30953 E63/R05
8'	10,000	4689	All	6.2L V8/M4	6.2L V8 A3	C30953 E63/R05 B3J



FOUR-WHEEL DRIVE (K)

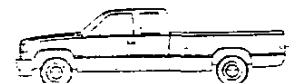
K1500 REGULAR CAB SPORTSIDE
 The Sportside features a specialized cargo bed design with a fully-rectangular cargo box on the inside, and fiberglass side panels flanked by running board steps on the outside.

BOX (FT.)	GVWR RANGE (LBS.)	MAX' PAYLOAD (LBS.)	AVAIL. TRIM	STD ENGINE/TRANS	OPT ENGINE/TRANS	MODEL NUMBER
6.5'	5600	1488	All	4.3L V6/M5	4.3L V6/M4 A4/A3 5.0L V8/M5 A4/A3 5.7L V8/M4 M5/A4	K10703 E63
6.5'	6100	1983	All	4.3L V6/M5	4.3L V6/M4 A4/A3 5.0L V8/M5 A4/A3 5.7L V8/M4/M5/A4	K10703 E62 F44



K1500 REGULAR CAB FLEETSIDE/WIDESIDE
 The K1500 Fleetside/Wideside is the most popular full-size model. It's available with a 6.5-foot or 8-foot cargo box, a variety of power teams and GVWRs.

BOX (FT.)	GVWR RANGE (LBS.)	MAX' PAYLOAD (LBS.)	AVAIL. TRIM	STD ENGINE/TRANS	OPT ENGINE/TRANS	MODEL NUMBER
6.5'	5600	1496	All	4.3L V6/M5	4.3L V6/M4/A4/A3 5.0L V8/M5/A4/A3 5.7L V8/M4/M5/A4	K10703 E63
6.5'	6100	1991	All	4.3L V6/M5	4.3L V6/M4/A4/A3 5.0L V8/M5/A4/A3 5.7L V8/M4/M5/A4	K10703 E63 F44
8'	5600	1419	All	4.3L V6/M5	4.3L V6/M4/A4/A3 5.0L V8/M5/A4 A3 5.7L V8 M4/M5/A4	K10903 E63
8'	6100	1895	All	4.3L V6/M5	4.3L V6/M4/A4/A3 5.0L V8/M5/A4/A3 5.7L V8/M4/M5/A4	K10903 E63 F44



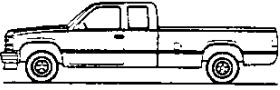
*TOTAL AVAILABLE FOR PEOPLE, EQUIPMENT, AND CARGO.

MODELS

KEY: RED PRINT INDICATES NOT AVAILABLE IN CALIFORNIA
 BOLD PRINT INDICATES NOT AVAILABLE W/HIGH ALTITUDE EMISSIONS

FOUR-WHEEL DRIVE (K) (Cont.)

K1500 4X4 EXTENDED CAB FLEETSIDE/CLUB COUPE WIDESIDE



BOX (FT.)	GVWR RANGE (LBS.)	MAX. PAYLOAD (LBS.)	AVAIL. TRIM	STD. ENGINE/TRANS	OPT. ENGINE/TRANS	MODEL NUMBER
6.5'	6200	1753	All	4.3L V6/M5	4.3L V6/M4/A4/A3 5.0L V8/M5/A4/A3 5.7L V8/M4/M5/A4	K10753/ E63
6.5'	6600	2077	All	4.3L V6/M5	4.3L V6/M4/A4/A3 5.0L V8/M5/A4/A3 5.7L V8/M4/M5/A4	K10753/ E63/F44
8'	6200	1685	All	4.3L V6/M5	4.3L V6/M4/A4/A3 5.0L V8/M5/A4/A3 5.7L V8/M4/M5/A4	K10953/ E63
8'	6600	2009	All	4.3L V6/M5	4.3L V6/M4/A4/A3 5.0L V8/M5/A4/A3 5.7L V8/M4/M5/A4	K10953/ E63/ F44

K1500 EXTENDED CAB FLEETSIDE/CLUB COUPE WIDESIDE

The K1500 Extended Cab/Club Coupe offers a cab design with a generous amount of secure in-cab storage behind the front seat and a choice of a 6.5-foot or an 8-foot cargo box. An optional three passenger rear seat is available.

K2500 4X4 REGULAR CAB FLEETSIDE/WIDESIDE



BOX (FT.)	GVWR RANGE (LBS.)	MAX. PAYLOAD (LBS.)	AVAIL. TRIM	STD. ENGINE/TRANS	OPT. ENGINE/TRANS	MODEL NUMBER
8'	7200	2942	All	4.3L V6/M5	4.3L V6/M4/A4/A3 5.0L V8/M5/A4/A3 5.7L V8/M4/M5/A4	K20903/ E63
8'	8600	3860	All	5.7L V8/M4	5.7L V8/A3	K20903/ E63/C6P
8'	8600	3771	All	6.2L V8/M4	6.2L V8/A3	K20903/ E63/B3J C6P

K2500 REGULAR CAB FLEETSIDE/WIDESIDE

The K2500 Regular Cab offers increased available GVWR capacity over the K1500 series.

K2500 4X4 EXTENDED CAB FLEETSIDE/CLUB COUPE WIDESIDE

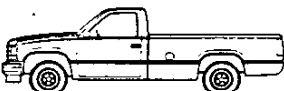


BOX (FT.)	GVWR RANGE (LBS.)	MAX. PAYLOAD (LBS.)	AVAIL. TRIM	STD. ENGINE/TRANS	OPT. ENGINE/TRANS	MODEL NUMBER
6.5'	7200	2720	All	4.3L V6/M5	4.3L V6/M4/A4/A3 5.0L V8/M5/A4/A3 5.7L V8/M4/M5/A4	K20753/ E63
8'	7200	2656	All	4.3L V6/M5	4.3L V6/M5/A4/A3 5.0L V8/M5/A4/A3 5.7L V8/M4/M5/A4	K20953/ E63
8'	8600	3573	All	5.7L V8/M4	5.7L V8/A3	K20953/ E63/C6P
8'	8600	3470	All	6.2L V8/M4	6.2L V8/A3	K20953/ E63/B3J C6P

K2500 EXTENDED CAB FLEETSIDE/CLUB COUPE WIDESIDE

The K2500 Extended Cab/Club Coupe offers the versatility of extended cab design coupled with the GVWR availability of the K2500 series. It is available with a 6.5-foot or 8-foot cargo box.

K3500 4X4 REGULAR CAB FLEETSIDE/WIDESIDE

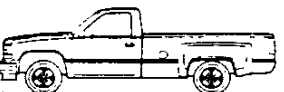


BOX (FT.)	GVWR RANGE (LBS.)	MAX. PAYLOAD (LBS.)	AVAIL. TRIM	STD. ENGINE/TRANS	OPT. ENGINE/TRANS	MODEL NUMBER
8'	8600	3503	All	7.4L V8/M4	7.4L V8/A3	K30903/ E63

K3500 REGULAR CAB FLEETSIDE/WIDESIDE

The K3500 Regular Cab Fleetside/Wideside offers high GVWR availability and power, including the 7.4-liter V8.

K3500 4X4 REGULAR CAB BIG DOOLEY/ HEAVY HAULER (R05)



BOX (FT.)	GVWR RANGE (LBS.)	MAX. PAYLOAD (LBS.)	AVAIL. TRIM	STD. ENGINE/TRANS	OPT. ENGINE/TRANS	MODEL NUMBER
8'	10,000	4911	All	5.7L V8/M4	5.7L V8/A3 7.4L V8/M4/A3	K30903/ E63/R05
8'	10,000	4614	All	6.2L V8/M4	6.2L V8/A3	K30903/ E63/B3J R05

K3500 REGULAR CAB BIG DOOLEY/HEAVY HAULER (R05)

The K3500 Big Dooley/Heavy Hauler option offers the highest GVWR available in the K pickup series. The Big Dooley/Heavy Hauler is equipped with dual rear wheels and plastic rear fender extensions.

*TOTAL AVAILABLE FOR PEOPLE, EQUIPMENT, AND CARGO

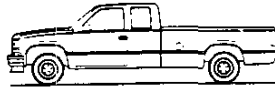
KEY: RED PRINT INDICATES NOT AVAILABLE IN CALIFORNIA
 BOLD PRINT INDICATES NOT AVAILABLE W/ HIGH ALTITUDE EMISSIONS

FOUR-WHEEL DRIVE (K) (Cont.)

**K3500 EXTENDED CAB
 FLEETSIDE/CLUB COUPE
 WIDESIDE**

The K3500 Extended Cab/Club Coupe offers the versatility of extended cab design coupled with the GVWR and engine availability of the K3500 series.

**K3500 4X4 EXT. CAB
 FLEETSIDE/CLUB
 COUPE WIDESIDE**



BOX (FT.)	GVWR RANGE (LBS.)	MAX' PAYLOAD (LBS.)	AVAIL. TRIM	STD. ENGINE/TRANS	OPT. ENGINE/TRANS	MODEL NUMBER
8'	8600	3225	All	7.4L V8/M4	7.4L V8/A3	K30953 E63

**K3500 EXT. CAB BIG DOOLEY/
 CLUB COUPE HEAVY HAULER
 w/DUAL REAR WHEELS (R05)**

The K3500 Extended Cab Big Dooley/Club Coupe Heavy Hauler w/Dual Rear Wheels option offers the versatility of extended cab design, high GVWR, as well as dual rear wheels and plastic rear fender extensions.

**K3500 4X4 EXT. CAB
 BIG DOOLEY/CLUB
 COUPE HEAVY HAULER
 w/DUAL REAR
 WHEELS (R05)**



BOX (FT.)	GVWR RANGE (LBS.)	MAX' PAYLOAD (LBS.)	AVAIL. TRIM	STD. ENGINE/TRANS	OPT. ENGINE/TRANS	MODEL NUMBER
8'	10,000	4633	All	5.7L V8/M4	5.7L V8/A3 7.4L V8/M4/A3	K30953 E63 R05
8'	10,000	4336	All	6.2L V8/M4	6.2L V8/A3	K30953 E63 R05

*TOTAL AVAILABLE FOR PEOPLE, EQUIPMENT, AND CARGO.

C/K PICKUP TRIM LEVELS

CHEYENNE/SIERRA SL

The Cheyenne/Sierra SL is the standard trim level available in the C/K Pickup line. It offers a high level of equipment designed to meet the needs of the full-size pickup buyer.

SCOTTSDALE/SIERRA SLX

The optional Scottsdale/Sierra SLX trim level offers increased comfort and convenience features compared to the standard trim level.

SILVERADO/SIERRA SLE

The optional Silverado/Sierra SLE trim level emphasizes luxury and style. It is the top-of-the-line trim level for the buyer demanding maximum comfort and convenience in a full-size pickup.

TRIM LEVELS

CHEYENNE/SL

The Cheyenne/SL trim level is the standard trim level of the C/K series. It is designed to offer truck buyers a high level of standard features when they purchase a standard-level truck.

The following features are standard:



Some equipment shown may be optional or extra cost.

POWERTEAM/CHASSIS

- 4.3-liter Vortec V6 engine with Electronic Fuel Injection (EFI) is standard on C/K 1500 and 7200-lb. GVWR 2500 series pickups. It produces 160 net horsepower @ 4000 rpm and 235 lb. ft. of net torque @ 2400 rpm.
- 5.7-liter V8 engine with Electronic Fuel Injection (EFI) is standard on C/K 2500 series pickups with C6P. It produces 190 horsepower @ 4000 rpm and 300 lb. ft. of torque @ 2400 rpm.
- 7.4-liter V8 engine with Electronic Fuel Injection (EFI) is standard on C/K 3500 series pickups (single rear wheel models only). It produces 230 horsepower @ 3600 rpm and 385 lb. ft. of torque @ 1600 rpm.
- Single electric low-note horn.
- Manual transmission with floor-mounted shift lever (4-speed or 5-speed depending on model; see Powerteams section for details).
- Front suspension is an independent design with computer-selected coil springs on 2-wheel drive models, and an independent design with torsion bar on 4-wheel drive models.
- Rear suspension is a leaf spring design with counter-angled rear shocks.
- Power-assisted brakes; front disc brakes, rear drum with rear wheel anti-lock brake system (Operates in 2WD only on 4WD models).
- Power steering.
- Frame is an all-welded ladder-type with channel design and boxed front-end section.
- Rubber-bushed cab mounts isolate road noise and reduce vibrations.
- 25.0-gallon fuel tank.

EXTERIOR

- Front chromed bumper.
- Molded plastic grille painted light argent with dark argent air intake areas.
- Single rectangular headlamps.
- Silver painted wheels with black hub ornament.
- All-season steel-belted radial tires (steel-belted radials on R05 models).
- Full-size spare tire and wheel (C/K1500 models only).
- Winch-type spare tire carrier mounted under frame at rear (C/K1500 models only).
- RH and LH fixed arm mirrors with adjustable heads, black finish.
- All-welded pickup box with double wall construction and extensive corrosion protection throughout.

INTERIOR

- RH and LH padded armrests integral w/door panels. Door panels are grained molded plastic.
- 3-passenger all-vinyl trim front bench seat with folding backrest.
- RH coat hook. Extended Cab/Club Coupe model adds LH coat hook.
- Dark gray door sill plate.
- Dome Lamp with switch in LH door jamb.
- Floor covering consists of embossed black rubber mats.
- Extended Cab/Club Coupe models feature tinted glass in all windows.
- Padded, color-keyed RH and LH sunshades.
- Gages include speedometer, odometer and fuel level.
- 4-spoke steering wheel.
- 10-inch rearview mirror.
- Vinyl headliner matches retainer moldings.
- Extended Cab/Club Coupe models have cab rear upper, lower and side trim panels and a molded cloth color-keyed headliner with matching retainer moldings.
- Insulation on dash panel, cowl top and sides, doors, Extended Cab/Club Coupe rear quarter and back panels, and on floor coverings. Extra insulation is provided for models with diesel engines.

SCOTTSDALE/SLX (RPO Z62)

The Scottsdale/SLX trim level is an optional trim level for the C/K series. It is designed to offer truck buyers an increased level of comfort and convenience features compared to the standard Cheyenne/SL trim level.

The following features are standard. Bold type denotes equipment in addition to or replacing that of the Cheyenne/SL trim level:



Some equipment shown may be optional or extra cost.

POWERTEAM/CHASSIS

- 4.3-liter Vortec V6 engine with Electronic Fuel Injection (EFI) is standard on C/K 1500 and 7200-lb. GVWR 2500 series pickups. It produces 160 net horsepower @ 4000 rpm and 235 lb. ft. of net torque @ 2400 rpm.
- 5.7-liter V8 engine with Electronic Fuel Injection (EFI) is standard on C/K 2500 series pickups with C6P. It produces 190 horsepower @ 4000 rpm and 300 lb. ft. of torque @ 2400 rpm.
- 7.4-liter V8 engine with Electronic Fuel Injection (EFI) is standard on

C/K 3500 series pickups (single rear wheel models only). It produces 230 horsepower @ 3600 rpm and 385 lb. ft. of torque @ 1600 rpm.

- Single electric low-note horn.
- Manual transmission with floor-mounted shift lever (4-speed or 5-speed depending on model; see Powerteams section for details).
- Front suspension is an independent design with computer selected coil springs on 2-wheel drive models, and an independent design with torsion bars on 4-wheel drive models.

- Rear suspension is a leaf spring design with counter angled rear shocks.
- Power-assisted brakes; front disc brakes, rear drum with rear wheel anti-lock brake system (Operates in 2WD only on 4WD models).
- Power steering.
- Frame is an all-welded ladder-type with channel design and boxed front-end section.
- Rubber-bushed cab mounts isolate road noise and reduce vibrations.
- 25.0-gallon fuel tank.

EXTERIOR

- Front chromed bumper with bumper rub strips.
- **Scottsdale/SLX nameplates.**
- Molded plastic grille painted light argent with dark argent air intake areas.
- Single rectangular headlamps.
- **Black plastic body side moldings. Black wheel opening lip moldings (Except K2500 C6P models, dual rear wheel models and Sportside models).**

- Silver painted wheels with black hub ornament.
- All-season steel-belted radial tires (steel-belted radials on R05 models).
- Full-size spare tire and wheel (C/K1500 models only).
- Winch-type spare tire carrier mounted under frame at rear (C/K1500 models only).

- RH and LH fixed arm mirrors with adjustable heads, black finish.
- All-welded pickup box with double wall construction and extensive corrosion protection throughout.

INTERIOR

- RH and LH armrests integral w/door panels. **Door panels are color-keyed grained molded plastic with soft vinyl trim, map pocket and Scottsdale/SLX emblems.**
- 3-passenger **standard cloth trim** front bench seat with folding backrest. (Extended Cab/Club Coupe models have a custom vinyl bench seat).
- RH coat hook and LH coat hook.
- **Color-keyed door sill plate.**

- Dome Lamp with switches in LH and RH door jambs.
- Floor covering consists of **color-keyed embossed rubber mats.**
- Extended Cab/Club Coupe models feature tinted glass in all windows.
- Padded, color-keyed RH and LH sunshades.
- Gages include speedometer, odometer and fuel level.
- 4-spoke steering wheel.
- 10-inch rearview mirror.
- **Full width storage tray behind seat on floor.**

- **Color-keyed cloth headliner. Regular Cab and Extended Cab/Club Coupe models include matching retainer moldings.**
- **Color-keyed door pillar and roof side panels.**
- Insulation on dash panel, cowl top and sides, doors, Extended Cab/Club Coupe rear quarter and back panels and on floor coverings, **plus insulation on headliners.** Extra insulation is provided for models with diesel engines.

TRIM LEVELS

SILVERADO/SLE (RPO YE9)

The Silverado/SLE trim level is an optional trim level for the C/K series. It is designed to offer truck buyers an increased level of comfort and convenience features compared to the standard Cheyenne/SL trim level and the optional Scottsdale/SLX levels.

The following features are standard. Bold type denotes equipment in addition to or replacing that of the Scottsdale/SLX trim level:



Some equipment shown may be optional or extra cost.

POWERTEAM/CHASSIS

- 4.3-liter Vortec V6 engine with Electronic Fuel Injection (EFI) is standard on C/K 1500 and 7200-lb. GVWR 2500 series pickups. It produces 160 net horsepower @ 4000 rpm and 235 lb. ft. of net torque @ 2400 rpm.
- 5.7-liter V8 engine with Electronic Fuel Injection (EFI) is standard on C/K 2500 series pickups with C6P. It produces 190 horsepower @ 4000 rpm and 300 lb. ft. of torque @ 2400 rpm.
- 7.4-liter V8 engine with Electronic Fuel Injection (EFI) is standard on

C/K 3500 series pickups (single rear wheel models only). It produces 230 horsepower @ 3600 rpm and 385 lb. ft. of torque @ 1600 rpm.

- Single electric low-note horn. **Additional electric high-note horn.**
- Manual transmission with floor-mounted shift lever (4-speed or 5-speed depending on model, see Powerteams section for details).
- Front suspension is an independent design with computer selected coil springs on 2-wheel drive models, and an independent design with torsion bars on 4-wheel drive models.

- Rear suspension is a leaf spring design with counter angled rear shocks.
- Power brakes; front disc brakes, rear drum with rear wheel anti-lock brake system (Operates in 2WD only on 4WD models).
- Power steering.
- Frame is an all-welded ladder-type with channel design and boxed front-end section.
- Rubber-bushed cab mounts isolate road noise and reduce vibrations.
- 25.0-gallon fuel tank.

EXTERIOR

- Front chromed bumper with bright trimmed bumper rub strips.
- **Silverado/Sierra SLE nameplates.**
- Molded plastic grille painted light argent with dark argent air intake areas. **Grille is chrome trimmed.**
- **Dual RH and LH rectangular halogen headlamps.**

- Black plastic body side moldings **with bright trim.** Black wheel opening lip moldings (except K3500, K2500 C6P models, dual rear wheel models and Sportside models).
- Silver painted wheels with black hub ornament.
- All-season steel-belted radial tires (steel-belted radials on R05 models).
- Full-size spare tire and wheels (C/K1500 models only).

- Winch-type spare tire carrier mounted under frame at rear (C/K1500 models only).
- RH and LH fixed arm mirrors with adjustable heads, black finish.
- All-welded pickup box with double wall construction and extensive corrosion protection throughout.
- **Hood and cab-to-fender insulators.**

INTERIOR

- RH and LH armrests integral w/door panels. **Door panels are two-toned soft vinyl over plastic trim and include map pocket, door closing assist straps and Silverado/SLE emblems.**
- 3-passenger with choice of **Custom Vinyl or Custom Cloth** front bench seat with folding backrest. (Extended Cab/Club Coupe models offer a choice of **Custom Vinyl or Custom Cloth** split front bench seat with **RH easy-entry feature**).
- RH coat hook and LH coat hook.
- Color-keyed door sill plate.
- Dome Lamp with switches in LH and RH door jambs.

- Floor covering consists of **color-keyed carpeting.**
- Extended Cab/Club Coupe models feature tinted glass in all windows.
- Padded, color-keyed RH and LH sunshades **with cloth covering, storage strap on LH unit and visor mirror on RH unit.**
- Gages include speedometer, odometer and fuel level. **Voltmeter, engine temperature, and oil pressure gages replace warning lights.**
- **Custom 4-spoke steering wheel.**
- 10-inch rearview mirror.
- Full width storage tray behind seat on floor.

- Color-keyed cloth headliner. Regular Cab models include matching retainer moldings.
- Color-keyed door pillar and roof side panels.
- **Cigarette lighter in ash tray.**
- **Color-keyed carpet on cab back panel.**
- **Insulation on cab back panel.**
- Insulation on dash panel, cowl top and sides, doors, Extended Cab/Club Coupe rear quarter and back panels and on floor coverings, plus insulation on headliners and **on Regular Cab back panels.** Extra insulation is provided for diesel models.

POWERTEAMS

KEY: S STANDARD
O OPTIONAL
— NOT OFFERED

RED NOT AVAILABLE W CALIFORNIA EMISSIONS
BOLD NOT AVAILABLE W/HIGH ALTITUDE EMISSIONS
H HIGH ALTITUDE EMISSIONS ONLY
C CALIFORNIA EMISSIONS ONLY

MODEL	TRANSMISSION				AXLES						GVWR
	MAN 4-SPD	(MM5) MAN 5-SPD	(MX1) AUTO 3-SPD	(MX0) AUTO 4-SPD	ECONOMY			POWER			
					2.73	3.08	3.42	3.73	4.10	4.56	
C1500 REG. CAB SPORTSIDE (E62) C10703/E62											
C1500 REG. CAB FLEETSIDE/WIDESIDE C10703/E63											
ENGINE											
4.3L V6 (LB4)	—	S			—	S	O	—	—	—	5600
	—			O	—	S	O ¹	H ²	—	—	5600
	—				S	O	O	—	—	—	5600
5.0L V8 (L03)	—				—			—	—	—	5600
	—			O	S	O ¹	O	—	—	—	5600
	—				S	O	O	—	—	—	5600
5.7L V8 (L05)	—	S			—	S	O	—	—	—	5600
	—			O	S	O	O	O ²	—	—	5600
	—				S	O	O	O ²	—	—	5600

¹ STANDARD W/HIGH ALTITUDE EMISSIONS ² REQUIRES KC4 ENG. OIL COOLER

MODEL	TRANSMISSION				AXLES						GVWR
	(MM4) MAN 4-SPD	(MM5) MAN 5-SPD	(MX1) AUTO 3-SPD	(MX0) AUTO 4-SPD	ECONOMY			POWER			
					2.73	3.08	3.42	3.73	4.10	4.56	
C1500 REG. CAB FLEETSIDE/WIDESIDE C10903/E63											
ENGINE											
4.3L V6 (LB4)	O	S			—	S	O	—	—	—	5600
				O	—	S	O ¹	H ²	—	—	6100
					S	O	O	—	—	—	5600
5.0L V8 (L03)		S			—	S	O	—	—	—	5600
				O	S	O ¹	O	—	—	—	6100
					S	O	O	—	—	—	5600
5.7L V8 (L05)	O	S			—	S	O	—	—	—	5600
				O	S	O	O	O ²	—	—	6100
					S	O	O	O ²	—	—	6100

¹ STANDARD W/HIGH ALTITUDE EMISSIONS ² REQUIRES KC4 ENG. OIL COOLER

MODEL	TRANSMISSION				AXLES						GVWR
	(MM4) MAN 4-SPD	(MM5) MAN 5-SPD	(MX1) AUTO 3-SPD	(MX0) AUTO 4-SPD	ECONOMY			POWER			
					2.73	3.08	3.42	3.73	4.10	4.56	
C1500 EXTENDED CAB FLEETSIDE/CLUB COUPE WIDESIDE C10753/C10953/E63											
ENGINE											
4.3L V6 (LB4)	O				—	S	O ¹	—	—	—	6200
		S			—	S	O	—	—	—	6200
				O	—	S	O ¹	H ²	—	—	6200
5.0L V8 (L03)		S			—	S	O	—	—	—	6200
				O	S	O ¹	O	—	—	—	6200
					S	O	O	—	—	—	6200
5.7L V8 (L05)	O				—	S	O	—	—	—	6200
		S			—	S	O	—	—	—	6200
				O	S	O	O	O ²	—	—	6200

¹ STANDARD W/HIGH ALTITUDE EMISSIONS ² REQUIRES KC4 ENG. OIL COOLER

MODEL	TRANSMISSION				AXLES						GVWR
	(MM4) MAN 4-SPD	(MM5) MAN 5-SPD	(MX1) AUTO 3-SPD	(MX0) AUTO 4-SPD	ECONOMY			POWER			
					2.73	3.08	3.42	3.73	4.10	4.56	
C2500 REG. CAB FLEETSIDE/WIDESIDE C20903/E63											
ENGINE											
4.3L V6 (LB4)	O				—	—	S	O ^{1 2}	—	—	7200
		S			—	—	S	O ^{1 2}	—	—	7200
				O	—	—	S	O ^{1 2}	O ¹	—	7200
5.0L V8 (L03)		S			—	—	S	O	—	—	7200
				O	—	—	S	O ³	O ³	—	7200
					—	—	S	O ¹	—	—	7200
5.7L V8 (L05)	O				—	—	S	O ¹	—	—	8600
		S			—	—	S	O ¹	O ¹	—	(C6P)
				O	—	—	S	O ¹	O ¹	O ¹	8600 (C6P)
6.2L V8 DIESEL (LL4)	S				—	—	—	S	O	O	8600 (C6P)
				O	—	—	—	S	O	O	8600 (C6P)

¹ REQUIRES KC4 ENG. OIL COOLER ² STANDARD W/HIGH ALTITUDE EMISSIONS ³ REQUIRES KC4 ENG. OIL COOLER W/C60 AIR COND.

POWERTEAMS

KEY: S STANDARD
O OPTIONAL
— NOT OFFERED

RED NOT AVAILABLE W/ CALIFORNIA EMISSIONS
BOLD NOT AVAILABLE W/HIGH ALTITUDE EMISSIONS
H HIGH ALTITUDE EMISSIONS ONLY
C CALIFORNIA EMISSIONS ONLY

MODEL	TRANSMISSION				AXLES						GVWR
	(MM4) MAN 4-SPD	(MM5) MAN 5-SPD	(MX1) AUTO 3-SPD	(MX0) AUTO 4-SPD	— ECONOMY —			— POWER —			
					2.73	3.08	3.42	3.73	4.10	4.56	
C2500 EXTENDED CAB FLEETSIDE/CLUB COUPE WIDESIDE C20753/E63 C20953/E63											
ENGINE											
4.3L V6 (LB4)	O				—	—	S	O ^{1,3}	—	—	7200
		S			—	—	S	O ^{1,3}	—	—	
			O		—	—	S	O ^{1,3}	O ¹	—	
5.0L V8 (L03)		S			—	—	S	O	—	—	7200
			O		—	—	S	O	O	—	
5.7L V8 (L05)	O				—	—	S	O ¹	—	—	7200
		S			—	—	S	O ¹	—	—	
			O		—	—	S	O ²	O ²	—	
				O	—	—	—	S ¹	O ¹	O ¹	8600 ² (C6P)
6.2L V8 DIESEL (LL4)	S				—	—	—	S	O	—	8600 ² (C6P)
			O		—	—	—	S	O	—	

¹ REQUIRES KC4 ENG. OIL COOLER
² 8600 LB GVWR N/A w/C20753

³ STANDARD W/HIGH ALTITUDE EMISSIONS
⁴ REQUIRES KC4 ENG. OIL COOLER w/C60 AIR COND.

MODEL	TRANSMISSION				AXLES						GVWR
	(MM4) MAN 4-SPD	(MM5) MAN 5-SPD	(MX1) AUTO 3-SPD	(MX0) AUTO 4-SPD	— ECONOMY —			— POWER —			
					2.73	3.08	3.42	3.73	4.10	4.56	
C3500 REG. CAB FLEETSIDE/WIDESIDE C30903/E63 C3500 REG. CAB BIG DOOLEY/HVY. HAULER C30903/E63 (R05)											
ENGINE											
5.7L V8 (L05)	S	—		—	—	—	—	—	S ¹	O ¹	10,000 ³ (R05)
		—	O ²	—	—	—	—	—	S ¹	O ¹	
7.4L V8 ³ (L19)	S	—		—	—	—	S	O	O ¹	—	8600
		—	O	—	—	—	S	O	O ¹	—	
	S	—		—	—	—	—	S	O ¹	O ¹	10,000 ³ (R05)
		—	O ¹	—	—	—	—	S	O ¹	O ⁴	
6.2L V8 DIESEL (LL4)	S	—		—	—	—	—	—	S	O	10,000 ³ (R05)
		—	O ²	—	—	—	—	—	S	O	

¹ REQUIRES KC4 ENG. OIL COOLER

² REQUIRES V02 H.D. COOLING
³ N/A WITH G80 LOCKING DIFFERENTIAL

⁴ REQUIRES KC4 ENG. OIL COOLER AND 7.50-16D TIRES

MODEL	TRANSMISSION				AXLES						GVWR
	(MM4) MAN 4-SPD	(MM5) MAN 5-SPD	(MX1) AUTO 3-SPD	(MX0) AUTO 4-SPD	— ECONOMY —			— POWER —			
					2.73	3.08	3.42	3.73	4.10	4.56	
C3500 EXTENDED CAB FLEETSIDE/CLUB COUPE WIDESIDE C30953/E63 C3500 EXT. CAB/CLUB COUPE BIG DOOLEY/HVY. HAULER C30953/E63 (R05)											
ENGINE											
5.7L V8 (L05)	S	—		—	—	—	—	—	S ¹	O ¹	10,000 ⁴ (R05)
		—	O ¹	—	—	—	—	—	S ¹	O ²	
7.4L V8 ⁴ (L19)	S	—		—	—	—	S	O	O ¹	—	8600 ⁴
		—	O	—	—	—	S	O	O ¹	—	
	S	—		—	—	—	—	S	O ¹	O ¹	10,000 ⁴ (R05)
		—	O ¹	—	—	—	—	S	O ¹	O ²	
6.2L V8 DIESEL (LL4)	S	—		—	—	—	—	—	S	O	10,000 ⁴ (R05)
		—	O ²	—	—	—	—	—	S	O	

¹ REQUIRES KC4 ENG. OIL COOLER

² REQUIRES KC4 ENG. OIL COOLER AND 7.50-16 TIRES
³ REQUIRES V02 H.D. COOLING

⁴ NOT AVAILABLE WITH G80 LOCKING DIFFERENTIAL

MODEL	TRANSMISSION				AXLES						GVWR
	(MM4) MAN 4-SPD	(MM5) MAN 5-SPD	(MX1) AUTO 3-SPD	(MX0) AUTO 4-SPD	— ECONOMY —			— POWER —			
					2.73	3.08	3.42	3.73	4.10	4.56	
K1500 REG. CAB SPORTSIDE (E62) K10703/E62 K1500 REG. CAB FLEETSIDE/WIDESIDE K10703/E63											
ENGINE											
4.3L V6 (LB4)	O				—	—	S ¹	O ²	—	—	5600
		S			—	—	S ¹	O ²	—	—	
			O		—	—	S ¹	O ³	—	—	
5.0L V8 (L03)		S			—	—	S ¹	O	—	—	5600
			O		—	—	S ¹	O ¹	—	—	
5.7L V8 (L05)		S			—	—	—	O ¹	—	—	5600
			O		—	—	—	O ¹	—	—	

¹ NOT AVAILABLE WITH LT 265 75R 16C TIRES

² REQUIRES KC4 ENG. OIL COOLER

³ REQUIRES KC4 ENG. OIL COOLER AND V02 H.D. COOLING

KEY: S STANDARD
O OPTIONAL
— NOT OFFERED

RED NOT AVAILABLE W CALIFORNIA EMISSIONS
BOLD NOT AVAILABLE W/HIGH ALTITUDE EMISSIONS
H HIGH ALTITUDE EMISSIONS ONLY
C CALIFORNIA EMISSIONS ONLY

MODEL	TRANSMISSION				AXLES						GVWR
	(MM4) MAN 4-SPD	(MM5) MAN 5-SPD	(MX1) AUTO 3-SPD	(MX0) AUTO 4-SPD	— ECONOMY —			— POWER —			
					2.73	3.08	3.42	3.73	4.10	4.56	
K1500 REG. CAB FLEETSIDE/WIDESIDE K10903/E63											
ENGINE											
4.3L V6 (LB4)	O				—	—	S ¹	O ²	—	—	5600 6100*
		S			—	—	S ¹	O ²	—	—	
5.0L V8 (L03)		S		O	—	—	S ¹	O ³	—	—	5600 6100*
					—	—	S ¹	O ³	—	—	
5.7L V8 (L05)	O				—	—	S	O ²	—	—	5600 6100*
		S			—	—	S	O ²	—	—	
				O	—	—	S	O ³	—	—	

¹ NOT AVAILABLE WITH LT 265/75R16C TIRES
² REQUIRES KC4 ENG. OIL COOLER

³ REQUIRES KC4 ENG. OIL COOLER AND V02 H.D. COOLING
⁴ REQUIRES F44 H.D. CHASSIS

MODEL	TRANSMISSION				AXLES						GVWR
	(MM4) MAN 4-SPD	(MM5) MAN 5-SPD	(MX1) AUTO 3-SPD	(MX0) AUTO 4-SPD	— ECONOMY —			— POWER —			
					2.73	3.08	3.42	3.73	4.10	4.56	
K1500 EXTENDED CAB FLEETSIDE/CLUB COUPE WIDESIDE K10753/E63 K10953/E63											
ENGINE											
4.3L V6 (LB4)	O				—	—	S ¹	O ²	—	—	6200 6600*
		S			—	—	S ¹	O ²	—	—	
5.0L V8 (L03)		S		O	—	—	S ¹	O ³	—	—	6200 6600*
					—	—	S ¹	O ³	H	—	
5.7L V8 (L05)	O				—	—	S	O ²	—	—	6200 6600*
		S			—	—	S	O ²	—	—	
				O	—	—	S	O ³	H ²	—	

¹ NOT AVAILABLE WITH LT 265/75R16C TIRES
² REQUIRES KC4 ENG. OIL COOLER

³ REQUIRES KC4 ENG. OIL COOLER AND V02 H.D. COOLING
⁴ REQUIRES F44 H.D. CHASSIS

MODEL	TRANSMISSION				AXLES						GVWR
	(MM4) MAN 4-SPD	(MM5) MAN 5-SPD	(MX1) AUTO 3-SPD	(MX0) AUTO 4-SPD	— ECONOMY —			— POWER —			
					2.73	3.08	3.42	3.73	4.10	4.56	
K2500 REG. CAB FLEETSIDE/WIDESIDE K20903/E63											
ENGINE											
4.3L V6 (LB4)	O				—	—	S	O ¹	—	—	7200
		S			—	—	S	O ¹	—	—	
				O	—	—	S	O ^{1,3}	O ¹	—	
5.0L V8 (L03)		S			—	—	S	O ^{2,3}	H ²	—	7200
				O	—	—	S	O ⁴	O ⁴	—	
					—	—	S	O	O	—	
5.7L V8 (L05)	O				—	—	S	O ¹	—	—	7200
		S			—	—	S	O ¹	—	—	
				O	—	—	S	O ¹	O ¹	—	
5.7L V8 (L05)	S				—	—	S	O ¹	O ¹	—	8600 ¹ (C6P)
				O	—	—	S	O ¹	O ¹	O ¹	
6.2L V8 DIESEL (LL4)	S				—	—	—	S	O	—	8600 (C6P)
				O	—	—	—	S	O	—	

¹ REQUIRES KC4 ENG. OIL COOLER
² REQUIRES KC4 ENG. OIL COOLER AND V02 H.D. COOLING

³ STANDARD W/HIGH ALTITUDE EMISSIONS
⁴ REQUIRES KC4 ENG. OIL COOLER w/C60 AIR COND.

POWERTEAMS

KEY: S STANDARD
O OPTIONAL
— NOT OFFERED

RED NOT AVAILABLE W/ CALIFORNIA EMISSIONS
BOLD NOT AVAILABLE W/HIGH ALTITUDE EMISSIONS
H HIGH ALTITUDE EMISSIONS ONLY
C CALIFORNIA EMISSIONS ONLY

MODEL	TRANSMISSION				AXLES						GVWR
	(MM4) MAN 4-SPD	(MM5) MAN 5-SPD	(MX1) AUTO 3-SPD	(MX0) AUTO 4-SPD	— ECONOMY —			— POWER —			
K2500 EXT. CAB FLEETSIDE/ CLUB COUPE WIDESIDE K20753/E63 K20953/E63					2.73	3.08	3.42	3.73	4.10	4.56	
ENGINE											
4.3L V6 (LB4)	O				—	—	S	O ¹	—	—	7200
		S			—	—	S	O ¹	—	—	
				O	—	—	S	O ²	—	—	
5.0L V8 (L03)		S			—	—	S	O	—	—	7200
			O	O	—	—	S	O	O	—	
5.7L V8 (L05)	O				—	—	S	O ¹	—	—	7200
		S			—	—	S	O ¹	—	—	
				O	—	—	S	O	O	—	8600 ⁵ (C6P)
				O	—	—	—	S ¹	O ¹	O ¹	
6.2L V8 DIESEL (LL4)	S				—	—	—	S	O	—	8600 ⁵ (C6P)
				O	—	—	—	S	O	—	

¹ REQUIRES KC4 ENG. OIL COOLER

² STANDARD W/HIGH ALTITUDE EMISSIONS

³ 8600-LB GVWR N/A W/K20753

⁴ REQUIRES KC4 ENG. OIL COOLER AND V02 H.D. COOLING

⁵ REQUIRES KC4 ENG. OIL COOLER w/C60 AIR COND.

MODEL	TRANSMISSION				AXLES						GVWR
	(MM4) MAN 4-SPD	MAN 5-SPD	(MX1) AUTO 3-SPD	AUTO 4-SPD	— ECONOMY —			— POWER —			
K3500 REG. CAB FLEETSIDE/ WIDESIDE K30903/E63 K3500 REG. CAB FLEETSIDE/WIDESIDE BIG DOOLEY/HEAVY HAULER K30903/E63 (R05)					2.73	3.08	3.42	3.73	4.10	4.56	
ENGINE											
5.7L V8 (L05)	S	—	—	—	—	—	—	—	S ¹	O ¹	10,000 ³ (R05)
		—	O ³	—	—	—	—	—	S ¹	O ⁴	
7.4L V8 ⁴ (L19)	S	—	—	—	—	—	S	O	O ¹	—	8600
		—	O	—	—	—	S	O	O ¹	—	
	S	—	—	—	—	—	—	—	S ¹	O ¹	10,000 ³ (R05)
		—	O ³	—	—	—	—	—	S ¹	O ⁴	
6.2L V8 DIESEL (LL4)	S	—	—	—	—	—	—	—	S	O	10,000 ³ (R05)
		—	O ³	—	—	—	—	—	S	O	

¹ REQUIRES KC4 ENG. OIL COOLER

² REQUIRES V02 H.D. COOLING

³ NOT AVAILABLE WITH G60 LOCKING DIFFERENTIAL

⁴ REQUIRES KC4 ENG. OIL COOLER AND V02 H.D. COOLING

⁵ REQUIRES KC4 ENG. OIL COOLER AND 7.50-16/D TIRES

MODEL	TRANSMISSION				AXLES						GVWR
	(MM4) MAN 4-SPD	MAN 5-SPD	(MX1) AUTO 3-SPD	AUTO 4-SPD	— ECONOMY —			— POWER —			
K3500 EXT. CAB FLEETSIDE/CLUB COUPE WIDESIDE K30953/E63 K3500 EXT. CAB FLEETSIDE/CLUB COUPE WIDESIDE BIG DOOLEY/ HEAVY HAULER K30953/E63 (R05)					2.73	3.08	3.42	3.73	4.10	4.56	
ENGINE											
5.7L V8 (L05)	S	—	—	—	—	—	—	—	S ¹	O ⁴	10,000 (R05)
		—	O ³	—	—	—	—	—	S ¹	O ⁴	
7.4L V8 ⁴ (L19)	S	—	—	—	—	—	S	O	O ¹	—	8600
		—	O	—	—	—	S	O	O ¹	—	
	S	—	—	—	—	—	—	—	S	O ⁴	10,000 (R05)
		—	O ³	—	—	—	—	—	S	O ⁴	
6.2L V8 DIESEL (LL4)	S	—	—	—	—	—	—	—	S	O	10,000 (R05)
		—	O ³	—	—	—	—	—	S	O	

¹ REQUIRES KC4 ENG. OIL COOLER

² REQUIRES V02 H.D. COOLING

³ NOT AVAILABLE WITH G80 LOCKING DIFFERENTIAL

⁴ REQUIRES KC4 ENG. OIL COOLER AND V02 H.D. COOLING

⁵ REQUIRES KC4 ENG. OIL COOLER AND 7.50-16/D TIRES

HORSEPOWER AND TORQUE RATINGS (C/K PICKUP)

	ENGINES							
	4.3L V6	5.0L V8	5.7L V8		7.4L V8	6.2L V8 DIESEL		
ORDERING CODE	LB4	L03	L05	L05	L19	LH6	LH6	LL4
			UP TO 8500 LBS GVWR	8501-10,000 LBS GVWR		UP TO 8500 LBS GVWR WITH MANUAL TRANS	UP TO 8500 LBS GVWR WITH AUTO TRANS	8501-10,000 LBS GVWR
SAE NET HORSEPOWER @ RPM	160 @ 4000	175 @ 4000	210 @ 4000	190 @ 4000	230 @ 3600	126 @ 3600	140 @ 3600	143 @ 3600
SAE NET TORQUE LB. FT. @ RPM	125 @ 2400	170 @ 2400	300 @ 2500	300 @ 2400	355 @ 1600	240 @ 2900	247 @ 2000	257 @ 2000
FUEL SYSTEM	EFI	EFI	EFI	EFI	EFI	Gear Driven Mechanical Fuel Injection	Gear Driven Mechanical Fuel Injection	Gear Driven Mechanical Fuel Injection
CLUTCH SIZE (in.)	11	11	12	12	12	12	12	12
STD. Battery (Cold Cranking Amps @ 0°F)	525	525 ¹	525	525	630	2 @ 570 Each	2 @ 570 Each	2 @ 570 Each

¹ 430 w/MANUAL TRANS.

SPECIFICATIONS

TWO-WHEEL DRIVE (C)

MODEL	C1500 REG. CAB SPORTSIDE/ FLEETSIDE/ WIDESIDE	C1500 REG. CAB FLEETSIDE/ WIDESIDE		C1500 EXT. CAB/ CLUB COUPE FLEETSIDE/ WIDESIDE		C2500 REG. CAB FLEETSIDE/ WIDESIDE		C2500 EXT. CAB FLEETSIDE/ CLUB COUPE WIDESIDE		C3500 REGULAR CAB/ FLEETSIDE/ WIDESIDE		C3500 EXT. CAB FLEETSIDE/ CLUB COUPE/ WIDESIDE	
		GAS	DIESEL	GAS	DIESEL	GAS	DIESEL	GAS	DIESEL	GAS		GAS	
MODEL NUMBER	C10703/E62 C10703/E63	C10903/E63		C10753/E63 C10953/E63		C20903/E63		C20753/E63 C20953/E63		C30903/E63		C30953/E63	
			B3J		B3J		B3J		B3J				
SUSPENSION (STD)													
Maximum Available Payload (lbs.) ¹	1899/ 1908	1837	1809	2210/ 2109	1742/ 1516	3291	2822	3076/ 3015	2607/ 2492	3870		3606	
Total GVWR (lbs.)	5600	5600	6100	6200	6600	7200	7200	7200	7200	8600		8600	
FRONT: GVWR (lbs.)	2950	2950	3150	3500	3500	3150	3400	3600	3600	3600		3600	
REAR: GVWR (lbs.)	3404	3404	3686	3686	3686	4670	4670	4670	4670	6000		6000	
FRONT: Suspension Type	Ind. Coil Spring	Ind. Coil Spring		Ind. Coil Spring		Ind. Coil Spring		Ind. Coil Spring		Ind. Coil Spring		Ind. Coil Spring	
Standard Spring Capacity (lbs.)	2950	2950	3200	3500	3500	3150	3400	3600	3600	3600		3600	
REAR: Suspension Type	Semi-Elliptic 2-Stage Multi-Leaf	Semi-Elliptic 2-Stage Multi-Leaf		Semi-Elliptic 2-Stage Multi-Leaf		Semi-Elliptic 2-Stage Multi-Leaf		Semi-Elliptic 2-Stage Multi-Leaf		Comb. Semi-Elliptic 2-Stage Main/Aux		Comb. Semi-Elliptic 2-Stage Main/Aux	
Standard Spring Capacity (lbs.)	3750	3750	3750	3750	3750	4800	4800	4800	4800	6000		6000	
Leaves Per Spring	4	4	4	4	4	5	5	5	5	6		6	
Leaf Total Thickness (in.)	2.14	2.14	2.14	2.14	2.14	2.71	2.71	2.71	2.71	3.27		3.27	
FRONT: Shock Absorber Piston Diameter (mm) STD./OPT.	25/32	25/32	25/32	25/32	25/32	32/—	32/—	32/—	32/—	32/—		32/—	
Stabilizer Bar Diameter (in.) STD./OPT.	—/1.00	—/1.00	—/1.00	—/1.00	—/1.00	—/1.00	—/1.00	—/1.00	—/1.00	—/1.00		—/1.00	
REAR: Shock Absorber Piston Diameter (mm) STD./OPT.	25/32	25/32	25/32	25/32	25/32	32/—	32/—	32/—	32/—	32/—		32/—	
FRONT: Axle Type	—	—	—	—	—	—	—	—	—	—		—	
Make	—	—	—	—	—	—	—	—	—	—		—	
Maximum Capacity	2950	2950	3150	3600	3600	3150	3400	3600	3600	3800		3800	
Standard Hub Locks	—	—	—	—	—	—	—	—	—	—		—	
Pinion/Ring Gear Type	—	—	—	—	—	—	—	—	—	—		—	
REAR: Axle Type	Semi-Floating	Semi-Floating		Semi-Floating		Semi-Floating		Semi-Floating		Full-Floating		Full-Floating	
Make	GM	GM		GM		GM		GM		GM		GM	
Maximum Capacity (lbs.)	3750	3750	3750	3750	3750	4800	4800	4800	4800	6000		6000	
Pinion/Ring Gear Type	Hypoid	Hypoid		Hypoid		Hypoid		Hypoid		Hypoid		Hypoid	
Standard Tires	Tubeless SBR P225/75R15 B/W	Tubeless SBR P225/75R15 P235/75R15 R15 BW R15 BW		Tubeless SBR P235/75R15 B/W		Tubeless SBR LT225/75R16D B/W		Tubeless SBR LT225/75R16D B/W		Tubeless SBR LT245/75R16E B/W		Tubeless SBR LT245/75R16E B/W	
Tire Capacity (lbs. each)	1703	1703	1843	1843	1843	2335	2335	2335	2335	3042		3042	
Inflation (PSI) Max.	35	35	35	35	35	65	65	65	65	80		80	
Wheel Size (in.)	15x6	15x6	15x6	15x6	15x6	15x6.5	15x6.5	15x6.5	15x6.5	15x6.5		15x6.5	
Wheel Capacity (lbs. each)	1702	1702	1843	1843	1843	2400	2400	2400	2400	3000		3000	
Bolt Holes	5	5	5	5	5	6	6	6	6	8		8	
Bolt Circle Diameter (in.)	5	5	5	5	5	5.5	5.5	5.5	5.5	6.5		6.5	
Offset (mm)	0	0	13	13	13	13	13	13	13	17		17	
Revolutions per mile @ 45 MPH	737	737	722	722	722	706	706	706	706	678		678	

¹ Total available for people, equipment, and cargo.

SPECIFICATIONS

TWO-WHEEL DRIVE (C)

MODEL	C1500 4X2 REG. CAB SPORTSIDE/ FLEETSIDE/ WIDESIDE	C1500 4X2 REG. CAB FLEETSIDE/ WIDESIDE		C1500 4X2 EXT. CAB FLEETSIDE/ CLUB COUPE WIDESIDE		C2500 4X2 REG. CAB FLEETSIDE/ WIDESIDE		C2500 4X2 EXT. CAB FLEETSIDE/ CLUB COUPE WIDESIDE		C3500 4X2 REG. CAB FLEETSIDE/ WIDESIDE		C3500 4X2 EXT. CAB FLEETSIDE/ CLUB COUPE WIDESIDE	
		GAS	DIESEL	GAS	DIESEL	GAS	DIESEL	GAS	DIESEL	GAS	DIESEL	GAS	DIESEL
MODEL NUMBER	C10703/E62 C10703/E63	C10903/E63		C10753/E63 C10953/E63		C20903/E63		C20753/E63 C20953/E63		C30903/E63		C30953/E63	
			B3J		B3J		B3J		B3J		B3J		B3J
SUSPENSION (OPT)													
Option	—	F44	—	—	—	C6P	C6P	C6P	C6P	R05	R05	R05	R05
Maximum Available Payload (lbs.) ¹	—	2308	—	—	—	4245	3947	3968	3667	5253	4969	4990	4689
Total GVWR (lbs.)	—	6100	—	—	—	8600	8600	8600	8600	10,000	10,000	10,000	10,000
FRONT: GVWR (lbs.)	—	3150	—	—	—	3600	3600	3600	3600	3600	3600	3600	3600
REAR: GVWR (lbs.)	—	3686	—	—	—	6000	6000	6000	6000	7500	7500	7500	7500
FRONT: Suspension Type	—	Ind. Coil Spring		—		Ind. Coil Spring		Ind. Coil Spring		Ind. Coil Spring		Ind. Coil Spring	
Spring Capacity (lbs.)	—	3150	—	—	—	3600	3600	3600	3600	3600	3600	3600	3600
REAR: Suspension Type	—	Semi-Elliptic 2-Stage Multi-Leaf		—		Semi-Elliptic 2-Stage Multi-Leaf		Semi-Elliptic 2-Stage Multi-Leaf		Comb Semi-Elliptic 2-Stage Main/Aux		Comb Semi-Elliptic 2-Stage Main/Aux	
Spring Capacity (lbs.)	—	3750	—	—	—	6000	6000	6000	6000	7500	7500	7500	7500
Leaves Per Spring	—	4	—	—	—	6	6	6	6	6/1	6/1	6/1	6/1
Leaf Total Thickness (in.)	—	2.14	—	—	—	3.27	3.27	3.27	3.27	4.86	4.86	4.86	4.86
FRONT: Shock Absorber STD/OPT Piston Diameter (mm)	—	25/32	—	—	—	32/—	32/—	32/—	32/—	32/—	32/—	32/—	32/—
Stabilizer Bar Diameter (in.) STD/OPT	—	—/1.00	—	—	—	—/1.00	—/1.00	—/1.00	—/1.00	—/1.00	—/1.00	—/1.00	—/1.00
REAR: Shock Absorber STD/OPT Piston Diameter (mm)	—	25/32	—	—	—	32/—	32/—	32/—	32/—	32/—	32/—	32/—	32/—
FRONT: Axle Type	—	—	—	—	—	—	—	—	—	—	—	—	—
Make	—	—	—	—	—	—	—	—	—	—	—	—	—
Maximum Capacity (lbs.)	—	3150	—	—	—	3800	3800	3800	3800	3800	3800	3800	3800
Standard Hub Locks	—	—	—	—	—	—	—	—	—	—	—	—	—
Pinion/Ring Gear Type	—	—	—	—	—	—	—	—	—	—	—	—	—
REAR: Axle Type	—	Semi-Floating		—		Semi-Floating		Semi-Floating		Full-Floating		Full-Floating	
Make	—	GM		—		GM	GM	GM	GM	GM		GM	
Maximum Capacity (lbs.)	—	3750	—	—	—	6000	6000	6000	6000	7500	7500	7500	7500
Pinion/Ring Gear Type	—	Hypoid	—	—	—	Hypoid	Hypoid	Hypoid	Hypoid	Hypoid		Hypoid	
Standard Tires	—	Tubeless SBR P235/75R15 B/W		—		Tubeless SBR LT245/75R16E B/W		Tubeless SBR LT245/75R16E B/W		LT225/ 75R16- C/D BW	LT225/ 75R16- C/D BW	LT225/ 75R16- C/D BW	LT225/ 75R16- C/D BW
Tire Capacity (lbs. each) Frt./Rr.	—	1843	—	—	—	3042	3042	3042	3042	1940/ 2150	1940/ 2150	1940/ 2150	1940/ 2150
Inflation (PSI) Max.	—	35	—	—	—	80	80	80	80	55	55	55	55
Wheel Size (in.)	—	15x6	—	—	—	16x6.5	16x6.5	16x6.5	16x6.5	16x6	13x6	16x6	16x6
Wheel Capacity (lbs. each) ¹	—	1843	—	—	—	3000	3000	3000	3000	2440	2440	2440	2440
Stud Holes	—	5	—	—	—	8	8	8	8	—	8	8	8
Hub Circle Diameter (in.)	—	5	—	—	—	6.5	6.5	6.5	6.5	6.5	6.5	6.5	6.5
Offset (mm)	—	13	—	—	—	17	17	17	17	127	127	127	127
Revolutions per mile @ 45 MPH	—	722	—	—	—	678	678	678	678	704/ 706	704/ 706	704/ 706	704/ 706

¹Total available for people, equipment, and cargo.

FOUR-WHEEL DRIVE (K)

MODEL	K1500 4X4 REG. CAB SPORTSIDE/ FLEETSIDE/ WIDESIDE	K1500 4X4 REG. CAB FLEETSIDE/ WIDESIDE		K1500 4X4 EXT. CAB FLEETSIDE/ CLUB COUPE WIDESIDE		K2500 4X4 REG. CAB FLEETSIDE/ WIDESIDE		K2500 4X4 EXT. CAB FLEETSIDE/ CLUB COUPE WIDESIDE		K3500 4X4 REG. CAB FLEETSIDE/ WIDESIDE		K3500 4X4 EXT. CAB FLEETSIDE/ CLUB COUPE WIDESIDE	
		GAS	DIESEL	GAS	DIESEL	GAS	DIESEL	GAS	DIESEL	GAS		GAS	
MODEL NUMBER	K10703/E62 K10703/E63	K10903/E63		K10753/ K10953/E63		K20903/E63		K20753/ K20953/E63		K30903/E63		K30953/E63	
			B3J		B3J		B3J		B3J				
SUSPENSION (STD)													
Maximum Available Payload (lbs.) ¹	1488/ 1496	1419	1319	1753/ 1685	1492/ 1423	2942	2371	2721/ 2656	2135/ 2070	3503		3225	
Total GVWR (lbs.)	5600	5600	6100	6200	6600	7200	7200	7200	7200	8600		8600	
FRONT: GVWR (lbs.)	3350	3400	3600	3600	3600	3750	3750	3750	3750	3750		3750	
REAR: GVWR (lbs.)	3400	3400	3750	3750	3750	4670	4670	4410	4410	6000		6000	
FRONT: Suspension Type	Ind. Torsion Bar	Ind. Torsion Bar		Ind. Torsion Bar		Ind. Torsion Bar		Ind. Torsion Bar		Ind. Torsion Bar		Ind. Torsion Bar	
Standard Spring Capacity (lbs.)	3600	3600	3600	3600	3600	3750	3750	3750	3750	3750		3750	
REAR: Suspension Type	Semi-Elliptic 2-Stage Multi-Leaf	Semi-Elliptic 2-Stage Multi-Leaf		Semi-Elliptic 2-Stage Multi-Leaf		Semi-Elliptic 2-Stage Multi-Leaf		Semi-Elliptic 2-Stage Multi-Leaf		Semi-Elliptic 2-Stage Multi-Leaf		Semi-Elliptic 2-Stage Multi-Leaf	
Standard Spring Capacity (lbs.)	3750	3750	3750	3750	3750	4800	4800	4800	4800	6000		6000	
Leaves Per Spring	4	4	4	4	4	5	5	5	5	6		6	
Leaf Total Thickness (in.)	2.14	2.14	2.14	2.14	2.14	2.71	2.71	2.71	2.71	3.27		3.27	
FRONT: Shock Absorber STD/OPT Piston Diameter (mm)	25/32	25/32	25/32	25/32	25/32	32/—	32/—	32/—	32/—	32/—		32/—	
Stabilizer Bar Diameter (in.) STD/OPT	—/1.00	—/1.00	—/1.00	—/1.00	—/1.00	—/1.00	—/1.00	—/1.00	—/1.00	—/1.00		—/1.00	
REAR: Shock Absorber STD/OPT Piston Diameter (mm)	25/32	25/32	25/32	25/32	25/32	32/—	32/—	32/—	32/—	32/—		32/—	
FRONT: Axle Type	Independent	Independent		Independent		Independent		Independent		Independent		Independent	
Make	GM	GM		GM		GM		GM		SPICER		SPICER	
Maximum Capacity	3350	3450	3925	3925	3925	3925	3925	3925	3925	4250		4250	
Standard Hub Locks	Insta-Trac	Insta-Trac		Insta-Trac		Insta-Trac		Insta-Trac		Insta-Trac		Insta-Trac	
Pinion/Ring Gear Type	Hypoid	Hypoid		Hypoid		Hypoid		Hypoid		Hypoid		Hypoid	
REAR: Axle Type	Semi- Floating	Semi- Floating		Semi- Floating		Semi- Floating		Semi- Floating		Semi- Floating		Semi- Floating	
Make	GM	GM		GM		GM		GM		GM		GM	
Maximum Capacity (lbs.)	3750	3750	3750	3750	4800	4800	4800	4800	4800	6000		6000	
Pinion/Ring Gear Type	Hypoid	Hypoid		Hypoid		Hypoid		Hypoid		Hypoid		Hypoid	
Standard Tires	Tubeless SBR LT225/75R16C B/W	Tubeless SBR LT225/75R16C B/W		Tubeless SBR LT245/75R16C B/W		Tubeless SBR LT225/75R16D B/W		Tubeless SBR LT245/75R16C B/W		Tubeless SBR LT245/75R16E B/W		Tubeless SBR LT245/75R16E B/W	
Tire Capacity (lbs. each)	1940	1940	1940	2205	2205	2335	2335	2205	2205	3042		3042	
Inflation (PSI) Max.	50	50	50	50	50	65	65	50	50	80		80	
Wheel Size (in.)	16 x 6.5	16 x 6.5	16 x 6.5	16 x 6.5	16 x 6.5	16 x 6.5	16 x 6.5	16 x 6.5	16 x 6.5	16 x 6.5		16 x 6.5	
Capacity (lbs. each)	1700	1700	2400	2400	2400	2400	2400	2400	2400	3000		3000	
Bolt Holes	6	6	6	6	6	6	6	6	6	8		8	
Bolt Circle Diameter (in.)	5.5	5.5	5.5	5.5	5.5	5.5	5.5	5.5	5.5	6.5		6.5	
Offset (mm)	44	44	50	50	50	50	50	50	50	17		17	
Revolutions per mile @ 45 MPH	704	704	704	681	681	706	706	681	681	678		678	

¹Total available for people, equipment, and cargo

SPECIFICATIONS

FOUR-WHEEL DRIVE (K)

MODEL	K1500 4X4 REG. CAB SPORTSIDE/FLEETSIDE/WIDESIDE		K1500 4X4 REG. CAB FLEETSIDE/WIDESIDE		K1500 4X4 EXT. CAB FLEETSIDE/CLUB COUPE WIDESIDE		K2500 4X4 REG. CAB FLEETSIDE/WIDESIDE		K2500 4X4 EXT. CAB FLEETSIDE/CLUB COUPE WIDESIDE		K3500 4X4 REG. CAB FLEETSIDE/WIDESIDE		K3500 4X4 EXT. CAB FLEETSIDE/CLUB COUPE WIDESIDE	
	GAS	DIESEL	GAS	DIESEL	GAS	DIESEL	GAS	DIESEL	GAS	DIESEL	GAS	DIESEL	GAS	DIESEL
MODEL NUMBER	K10703/E62 K10703/E63		K10903/E63		K10753/ K10953/E63		K20903/E63		K20953/E63		K30903/E63		K30953/E63	
			B3J			B3J		B3J		B3J				
SUSPENSION (OPT)														
Option	F44/F60	F44/F60	—	F44	—	C6P	C6P	C6P	C6P	R05	R05	R05	R05	
Maximum Available Payload (lbs.) ¹	1983/ 1991	1895	—	2077/ 2009	—	3860	3771	3573	3470	4911/ 4564	4614	4633/ 4286	4336	
Total GVWR (lbs.)	6100	6100	—	6600	—	8600	8600	8600	8600	10,000	10,000	10,000	10,000	
FRONT: GAWR (lbs.)	3600	3600	—	3600	—	3750	3750	3750	3750	3750	3750	3750	3750	
REAR: GAWR (lbs.)	3750	3750	—	3750	—	6000	6000	6000	6000	7500	7500	7500	7500	
FRONT: Suspension Type	Ind. Torsion Bar	Ind. Torsion Bar	—	Ind. Torsion Bar	—	Ind. Torsion Bar	Ind. Torsion Bar	Ind. Torsion Bar	Ind. Torsion Bar	Ind. Torsion Bar	Ind. Torsion Bar	Ind. Torsion Bar	Ind. Torsion Bar	
Standard Spring Capacity (lbs.)	3600	3600	—	3600	—	3750	3750	3750	3750	3750	3750	3750	3750	
REAR: Suspension Type	Semi-Elliptic 2-Stage Multi-Leaf	Semi-Elliptic 2-Stage Multi-Leaf	—	Semi-Elliptic 2-Stage Multi-Leaf	—	Semi-Elliptic 2-Stage Multi-Leaf	Semi-Elliptic 2-Stage Multi-Leaf	Semi-Elliptic 2-Stage Multi-Leaf	Semi-Elliptic 2-Stage Multi-Leaf	Comb Semi-Elliptic 2-Stage Main/Aux	Comb Semi-Elliptic 2-Stage Main/Aux	Comb Semi-Elliptic 2-Stage Main/Aux	Comb Semi-Elliptic 2-Stage Main/Aux	
Standard Spring Capacity (lbs.)	3750	3750	—	3750	—	6000	6000	6000	6000	7500	7500	7500	7500	
Leaves Per Spring	4	4	—	4	—	6	6	6	6	6/1	6/1	6/1	6/1	
Leaf Total Thickness (in.)	2.14	2.14	—	2.14	—	3.27	3.27	3.27	3.27	4.86	4.86	4.86	4.86	
FRONT: Shock Absorber STD/OPT Piston Diameter (mm)	25/32	25/32	—	25/32	—	32/—	32/—	32/—	32/—	32/—	32/—	32/—	32/—	
Stabilizer Bar Diameter (in.) STD/OPT	—/1.00	—/1.00	—	—/1.00	—	—/1.00	—/1.00	—/1.00	—/1.00	—/1.00	—/1.00	—/1.00	—/1.00	
REAR: Shock Absorber STD/OPT Piston Diameter (mm)	25/32	25/32	—	25/32	—	32/—	32/—	32/—	32/—	32/—	32/—	32/—	32/—	
FRONT: Axle Type	Indpt.	Indpt.	—	Indpt.	—	Indpt.	Indpt.	Indpt.	Indpt.	Indpt.	Indpt.	Indpt.	Indpt.	
Make	GM	GM	—	GM	—	Spicer	Spicer	Spicer	Spicer	Spicer	Spicer	Spicer	Spicer	
Maximum Capacity (lbs.)	3925	3925	—	4800	—	4250	4250	4250	4250	4250	4250	4250	4250	
Standard Hub Locks	Insta- Trac	Insta- Trac	—	Insta- Trac	—	Insta- Trac	Insta- Trac	Insta- Trac	Insta- Trac	Insta- Trac	Insta- Trac	Insta- Trac	Insta- Trac	
Pinion/Ring Gear Type	Hypoid	Hypoid	—	Hypoid	—	Hypoid	Hypoid	Hypoid	Hypoid	Hypoid	Hypoid	Hypoid	Hypoid	
REAR: Axle Type	Semi-Floating	Semi-Floating	—	Semi-Floating	—	Full-Floating	Full-Floating	Full-Floating	Full-Floating	Full-Floating	Full-Floating	Full-Floating	Full-Floating	
Make	GM	GM	—	GM	—	GM	GM	GM	GM	GM	GM	GM	GM	
Maximum Capacity (lbs.)	3750	3750	—	4800	—	6000	6000	6000	6000	7500	7500	7500	7500	
Pinion/Ring Gear Type	Hypoid	Hypoid	—	Hypoid	—	Hypoid	Hypoid	Hypoid	Hypoid	Hypoid	Hypoid	Hypoid	Hypoid	
Standard Tires	LT225/75R16C Tubeless SBR B/W	LT225/75R16C Tubeless SBR B/W	—	LT245/75R16C Tubeless SBR B/W	—	LT245/ 75R16- E BW	LT245/ 75R16- E BW	LT245/ 75R16- E BW	LT245/ 75R16- E BW	LT225/ 75R16- D BW	LT225/ 75R16- D BW	LT225/ 75R16- D BW	LT225/ 75R16- D BW	
Tire Capacity (lbs. each)	1940	1940	—	2205	—	3042	3042	3042	3042	2335	2335	2335	2335	
Inflation (PSI) Max.	50	50	—	45	—	80	80	80	80	65	65	65	65	
Wheel Size (in.)	16 x 6.5	16 x 6.5	—	16 x 6.5	—	16 x 6.5	16 x 6.5	16 x 6.5	16 x 6.5	16 x 6	16 x 6	16 x 6	16 x 6	
Wheel Capacity (lbs. each)	2400	2400	—	2400	—	3000	3000	3000	3000	2440	2440	2440	2440	
Bolt Holes	6	6	—	6	—	8	8	8	8	8	8	8	8	
Roll Circle Diameter (in.)	5.5	5.5	—	5.5	—	6.5	6.5	6.5	6.5	6.5	6.5	6.5	6.5	
Offset (mm)	50	50	—	50	—	17	17	17	17	127	127	127	127	
Revolutions per mile @ 45 MPH	—	—	—	—	—	678	678	678	678	706	706	706	706	

¹Total available for people, equipment, and cargo.

TWO-WHEEL DRIVE (C)

MODEL	C1500 REG. CAB SPORTSIDE/ FLEETSIDE/ WIDESIDE	C1500 REG. CAB FLEETSIDE/ WIDESIDE	C1500 EXT. CAB FLEETSIDE/ CLUB COUPE WIDESIDE		C2500 REG. CAB FLEETSIDE/ WIDESIDE		C2500 EXT. CAB FLEETSIDE/ CLUB COUPE WIDESIDE		C3500 REG. CAB FLEETSIDE/ WIDESIDE	C3500 EXT. CAB FLEETSIDE/ CLUB COUPE WIDESIDE	
MODEL NUMBER	C10703/E62 C10703/E63	C10903/E63	C10753/E63 C10953/E63		C20903/E63		C20753/E63 C20953/E63		C30903/E63	C30953/E63	
STD FRAME											
Side Rail Dimensions: Width (in.)	2.31	2.31	2.31	2.31	2.31	2.31	2.31	2.31	2.31	2.31	2.31
Depth (in.)	6.30	6.30	6.30	6.30	6.30	7.24	6.30	6.30	7.24	7.24	7.24
Thickness (in.)	.130	.130	.165	.165	.130	.213	.165	.165	.244	.213	.244
Section Modulus Rails only	2.70	2.70	3.42	3.42	2.70	5.38	3.42	3.42	6.21	5.38	6.21
RBM of Frame	105,300	105,300	133,380	133,380	105,300	209,820	133,380	133,380	242,190	209,820	242,190
Width Over Rails Front (in.)	45.27	45.27	45.27	45.27	45.27	45.27	45.27	45.27	45.27	45.27	45.27
Rear (in.)	36.7	36.7	36.7	36.7	36.7	36.7	36.7	36.7	36.7	36.7	36.7
Overall Length of Rail (in.)	193.7	212.6	236.6	222.6	212.6	212.6	222.6	236.6	236.6	212.6	236.6
STEERING											
Type	Integral Power	Integral Power	Integral Power		Integral Power		Integral Power		Integral Power	Integral Power	
Steering Ratio	18.88:1	18.88:1	18.88:1	18.88:1	18.88:1	19.2:1	18.88:1	18.88:1	19.2:1	19.2:1	19.2:1
Turning Diameter: Curb-To-Curb (ft.)	41.3	44.6	48.1	52.9	44.6	45.7	48.1	52.9	52.9	45.7	52.9
Wall-To-Wall (ft.)	43.2	46.5	50.0	54.8	46.5	47.5	50.1	54.8	54.8	47.5	54.8

TWO-WHEEL DRIVE (C)

MODEL	C1500 REG. CAB SPORTSIDE/ FLEETSIDE/ WIDESIDE	C1500 REG. CAB FLEETSIDE/ WIDESIDE	C1500 EXT. CAB FLEETSIDE/ CLUB COUPE WIDESIDE		C2500 REG. CAB FLEETSIDE/ WIDESIDE		C2500 EXT. CAB FLEETSIDE/ CLUB COUPE WIDESIDE		C3500 REG. CAB FLEETSIDE/ WIDESIDE	C3500 EXT. CAB FLEETSIDE/ CLUB COUPE WIDESIDE				
MODEL NUMBER	C10703/E62 C10703/E63	C10903/E63	C10753/E63 C10953/E63		C20903/E63		C20753/E63 C20953/E63/C6P		C30903/E63	C30953/E63				
BRAKES														
GVWR	5600		5600	6100	6200		7200	8600	7200	8600	8600	10,000	8600	10,000
Type	Vac. Power		Vac. Power		Vac. Power		Vac. Power		Vac. Power		Vac. Power	Hyd. Power	Vac. Power	Hyd. Power
	Front Disc/Rear Drum w/Rear Wheel Anti-Lock Brake System		Front Disc/Rear Drum w/Rear Wheel Anti-Lock Brake System		Front Disc/Rear Drum w/Rear Wheel Anti-Lock Brake System		Front Disc/Rear Drum w/Rear Wheel Anti-Lock Brake System		Front Disc/Rear Drum w/Rear Wheel Anti-Lock Brake System		Front Disc/Rear Drum w/Rear Wheel Anti-Lock Brake System		Front Disc/Rear Drum w/Rear Wheel Anti-Lock Brake System	
Booster (Diaphragm Diameter)	9.5 Tandem		9.5 Tand.	9.5 Tand.	9.5 Tandem		9.5 Tandem		9.5 Tandem		9.5 Tand.	—	9.5 Tand.	—
Front Rotor Size (Diameter x Thickness)	11.57x1.0		11.57x 1.0	11.57x 1.25	11.57x1.25		11.57x 1.25	12.50x 1.26	11.57x 1.25	12.50x 1.26	12.50x 1.26	12.50x 1.26	12.50x 1.26	12.50x 1.26
Front Facing Contact Per Axle (sq. in.)	34.8		34.8	34.8	38.0	34.8	34.8	38.0	34.8	38.0	38.0	38.0	38.0	38.0
Rear Drum Size (Diameter x Width)	10.0x2.25		10.0x 2.25	10.0x 2.25	10.0x2.25		11.15x 2.75	13.0x 2.5	11.15x 2.75	13.0x 2.5	13.0x 2.5	13.0x 2.5	13.0x 2.5	13.0x 2.5
Rear Facing Contact Per Axle (sq. in.)	84.88		84.88	84.88	84.88		115.84	116.73	115.84	116.73	116.73	166.04	116.73	166.04
Parking Brake	Cable To Rear Wheels		Cable To Rr. Wheels	Cable To Rr. Wheels	Cable To Rear Wheels		Cable To Rear Wheels		Cable To Rear Wheels		Cable To Rr. Wheels	Cable To Rr. Wheels	Cable To Rr. Wheels	Cable To Rr. Wheels

SPECIFICATIONS

FOUR-WHEEL DRIVE (K)

MODEL	K1500 REG. CAB SPORTSIDE/ FLEETSIDE/ WIDESIDE	K1500 REG. CAB FLEETSIDE/ WIDESIDE	K1500 EXT. CAB FLEETSIDE/ CLUB COUPE WIDESIDE		K2500 REG. CAB FLEETSIDE/ WIDESIDE		K2500 EXT. CAB FLEETSIDE/ CLUB COUPE WIDESIDE			K3500 REG. CAB FLEETSIDE/ WIDESIDE	K3500 EXT. CAB FLEETSIDE/ CLUB COUPE WIDESIDE
MODEL NUMBER	K10703/E62 K10703/E63	K10903/E63	K10753/E63 K10953/E63		K20903/E63		K20753/E63 K20953/E63			K30903/E63	K30953/E63
						C6P			C6P		
STD FRAME											
Side Rail Dimensions: Width (in.)	2.18	2.18	2.18	2.18	2.13	2.18	2.31	2.31	2.18	2.18	2.18
Depth (in.)	7.48	7.48	7.48	7.48	7.48	7.48	7.48	7.48	7.48	7.48	7.48
Thickness (in.)	.134	.134	.165	.165	.134	.213	.165	.165	.244	.213	.244
Section Modulus Rails only	3.46	3.46	4.30	4.30	3.46	5.61	4.30	4.30	6.48	5.61	6.48
RBM of Frame	134,940	134,940	167,700	167,700	134,940	218,790	167,700	167,700	252,720	218,790	252,720
Width Over Rails Front (in.)	45.27	45.27	45.27	45.27	45.27	45.27	45.27	45.27	45.27	45.27	45.27
Rear (in.)	36.7	36.7	36.7	36.7	36.7	36.7	36.7	36.7	36.7	36.7	36.7
Overall Length of Rail (in.)	193.7	212.6	222.6	236.6	212.6	212.6	222.6	236.6	236.6	212.6	212.6
STEERING											
Type	Integral Power	Integral Power	Integral Power		Integral Power		Integral Power			Integral Power	Integral Power
Steering Ratio	17.44:1	17.44:1	18.88:1	17.44:1	17.44:1	17.44:1	18.88:1	17.44:1	17.44:1	17.44:1	17.44:1
Turning Diameter: Curb-To-Curb (ft.)	40.3	44.4	47.9	52.2	44.4	45.1	47.9	52.2	52.2	45.1	52.2
Wall-To-Wall (ft.)	42.3	46.3	49.8	53.7	46.3	46.7	49.8	53.7	53.7	46.7	53.7

FOUR-WHEEL DRIVE (K)

MODEL	K1500 REG. CAB SPORTSIDE/ FLEETSIDE/ WIDESIDE	K1500 REG. CAB FLEETSIDE/ WIDESIDE	K1500 EXT. CAB FLEETSIDE/ CLUB COUPE WIDESIDE		K2500 REG. CAB FLEETSIDE/ WIDESIDE		K2500 EXT. CAB FLEETSIDE/ CLUB COUPE WIDESIDE		K3500 REG. CAB FLEETSIDE/ WIDESIDE	K3500 EXT. CAB FLEETSIDE/ CLUB COUPE WIDESIDE		
MODEL NUMBER	K10703/E62 K10703/E63	K10903/E63	K10753/E63 K10953/E63		K20903/E63		K20753/E63 K20953/E63		K30903/E63	K30953/E63		
BRAKES												
GVWR	5600	5600	6200	6200	7200	8600	7200	8600	8600	10,000	8600	10,000
Type	Vac. Power	Vac. Power		Vac. Power	Vac. Power		Vac. Power		Vac. Power	Hyd. Power	Vac. Power	Hyd. Power
	Front Disc/Rear Drum w/Rear Wheel Anti-Lock Brake System	Front Disc/Rear Drum w/Rear Wheel Anti-Lock Brake System	Front Disc/Rear Drum w/Rear Wheel Anti-Lock Brake System	Front Disc/Rear Drum w/Rear Wheel Anti-Lock Brake System	Front Disc/Rear Drum w/Rear Wheel Anti-Lock Brake System	Front Disc/Rear Drum w/Rear Wheel Anti-Lock Brake System	Front Disc/Rear Drum w/Rear Wheel Anti-Lock Brake System	Front Disc/Rear Drum w/Rear Wheel Anti-Lock Brake System	Front Disc/Rear Drum w/Rear Wheel Anti-Lock Brake System	Front Disc/Rear Drum w/Rear Wheel Anti-Lock Brake System	Front Disc/Rear Drum w/Rear Wheel Anti-Lock Brake System	
Booster (Diaphragm Diameter)	9.5 Tandem	9.5 Tand.	9.5 Tand.	9.5 Tandem	9.5 Tandem		9.5 Tandem		9.5 Tand.	—	9.5 Tand.	—
Front Rotor Size (Diameter x Thickness)	11.57x1.0	11.57x 1.0	11.57x 1.20	11.57x1.25	11.57x 1.20	12.50 1.26	11.57x 1.25	12.50x 1.26	12.50x 1.26	12.50x 1.26	12.50x 1.26	12.50x 1.26
Front Facing Contact Per Axle (sq. in.)	42.24	42.24	42.24	42.24	42.24		42.24		42.24	42.24	42.24	42.24
Rear Drum Size (Diameter x Width)	10.0x2.25	10.0x 2.25	10.0x 2.25	10.0x2.25	11.15x 2.75	13.0x 2.5	10.0x 2.25	13.0x 2.5	13.0x 2.5	13.0x 2.5	13.0x 2.5	13.0x 2.5
Rear Facing Contact Per Axle (sq. in.)	84.88	84.88	84.88	84.88	115.84	116.73	84.88	116.73	116.73	166.04	116.73	166.04
Parking Brake	Cable To Rear Wheels	Cable To Rear Wheels	Cable To Rear Wheels	Cable To Rear Wheels	Cable To Rear Wheels	Cable To Rear Wheels	Cable To Rear Wheels	Cable To Rear Wheels	Cable To Rear Wheels	Cable To Rear Wheels	Cable To Rear Wheels	

SPECIFICATIONS

TWO-WHEEL DRIVE (C)

MODEL	C1500 REG. CAB SPORTSIDE/ FLEETSIDE/ WIDESIDE		C1500 REG. CAB FLEETSIDE/ WIDESIDE			C1500 EXTENDED CAB FLEETSIDE/ CLUB COUPE WIDESIDE			C2500 REGULAR CAB FLEETSIDE/ WIDESIDE			C2500 EXTENDED CAB FLEETSIDE/CLUB COUPE WIDESIDE			C3500 REGULAR CAB FLEETSIDE/ WIDESIDE			C3500 EXTENDED CAB FLEETSIDE/CLUB COUPE WIDESIDE		
MODEL NUMBER	C10703/E62 C10703/E63		C10903			C10753/E63 C10953/E63			C20903			C20753/E63 C20953/E63			C30903			C30953		
ELECTRICAL																				
ENGINE STD./OPT.	4.3L V6 5.7L V8	5.0L ¹ V8	4.3L V6 5.7L V8	5.0L ¹ V8	6.2L V8	4.3L V6 5.7L V8	5.0L ¹ V8	6.2L V8	4.3L V6 5.7L V8	5.0L ¹ V8	6.2L V8	4.3L V6 5.7L V8	5.0L ¹ V8	6.2L V8	7.4L V8	5.7L V8	6.2L V8	7.4L V8	5.7L V8	6.2L V8
Standard Battery: Cold Cranking Amps @ 0°F @ -20°F	525 390	430 330	525 390	430 330	570 425	525 390	430 330	570 425	525 390	430 330	570 425	525 405	430 330	570 425	630 490	525 405	570 425	630 490	525 405	570 425
Reserve Capacity Minutes @ 80°F	90	90	90	90	90	90	90	90	90	90	90	90	90	90	115	90	90	115	90	90
Optional Battery:	UA1	UA1	UA1	UA1	—	UA1	UA1	—	UA1	UA1	—	UA1	UA1	—	—	UA1	—	—	UA1	—
Cold Cranking Amps @ 0°F @ -20°F	630 490	630 490	630 490	630 490	—	630 490	630 490	—	630 490	630 490	—	630 490	630 490	—	—	630 490	—	—	630 490	—
Reserve Capacity Minutes @ 80°F	115	115	115	115	—	115	115	—	115	115	—	115	115	—	—	115	—	—	115	—
Auxiliary Battery:	TP2	TP2	TP2	TP2	—	TP2	TP2	—	—	—	TP2	TP2	TP2	—	TP2	TP2	—	TP2	TP2	—
Cold Cranking Amps @ 0°F @ -20°F	540 410	540 410	540 410	540 410	—	540 410	540 410	—	—	—	540 410	540 410	540 410	—	540 410	540 410	—	540 410	540 410	—
Reserve Capacity Minutes @ 80°F	115	115	115	115	—	115	115	—	—	—	115	115	115	—	115	115	—	115	115	—
Standard Generator: Max. Capacity (Amps)	85	85	85	85	85	85	85	85	85	85	85	85	85	85	85	85	85	85	85	85
Max Watts @ 12 Volts	1020	1020	1020	1020	1020	1020	1020	1020	1020	1020	1020	1020	1020	1020	1020	1020	1020	1020	1020	1020
Nominal Amp @ Idle (Approx.)	30	30	30	30	30	30	30	30	30	30	30	30	30	30	30	30	30	30	30	30
Drive Pulley Ratio	2.7:1	2.7:1	2.7:1	2.7:1	3.7:1	2.7:1	2.7:1	3.7:1	2.7:1	2.7:1	3.7:1	2.7:1	2.7:1	3.7:1	3.1:1	2.7:1	3.7:1	3.1:1	2.7:1	3.7:1
Model Number	CS130	CS130	CS130	CS130	CS130	CS130	CS130	CS130	CS130	CS130	CS130	CS130	CS130	CS130	CS130	CS130	CS130	CS130	CS130	CS130
Optional Generator:	C60	C60	C60	C60	C60	C60	C60	C60	C60	C60	C60	C60	C60	C60	C60	C60	C60	C60	C60	C60
Max. Capacity (Amps)	100	100	100	100	100	100	100	100	100	100	100	100	100	100	100	100	100	100	100	100
Max Watts @ 12 Volts	1200	1200	1200	1200	1200	1200	1200	1200	1200	1200	1200	1200	1200	1200	1200	1200	1200	1200	1200	1200
Nominal Amp @ Idle (Approx)	36	36	36	36	36	36	36	36	36	36	36	36	36	36	36	36	36	36	36	36
Drive Pulley Ratio	3.1:1	3.1:1	3.1:1	3.1:1	3.7:1	3.1:1	3.1:1	3.7:1	3.1:1	3.1:1	3.7:1	3.1:1	3.1:1	3.7:1	3.1:1	3.1:1	3.7:1	3.1:1	3.1:1	3.7:1
Model Number	CS130	CS130	CS130	CS130	CS130	CS130	CS130	CS130	CS130	CS130	CS130	CS130	CS130	CS130	CS130	CS130	CS130	CS130	CS130	CS130

¹5.0L V8 with Automatic Transmission is equipped with a 525 CCA @ 0°F battery.

SPECIFICATIONS

FOUR-WHEEL DRIVE (K)

MODEL	K1500 REG. CAB SPORTSIDE/FLEETSIDE/WIDESIDE			K1500 REG. CAB FLEETSIDE/WIDESIDE			K1500 EXTENDED CAB FLEETSIDE/CLUB COUPE WIDESIDE			K2500 REGULAR CAB FLEETSIDE/WIDESIDE			K2500 EXTENDED CAB FLEETSIDE/CLUB COUPE WIDESIDE			K3500 REGULAR CAB FLEETSIDE/WIDESIDE			K3500 EXTENDED CAB FLEETSIDE/CLUB COUPE WIDESIDE		
MODEL NUMBER	K10703/E62 K10703/E63			K10903			K10753/E63 K10953/E63			K20903			K20753/E63 K20953/E63			K30903			K30953		
ELECTRICAL																					
ENGINE STD./OPT.	4.3L V6 5.7L V8	5.0L ¹ V8	4.3L V6 5.7L V8	5.0L ¹ V8	6.2L V8	4.3L V6 5.7L V8	5.0L ¹ V8	6.2L V8	4.3L V6 5.7L V8	5.0L ¹ V8	6.2L V8	4.3L V6 5.7L V8	5.0L ¹ V8	6.2L V8	7.4L V8	5.7L V8	6.2L V8	7.4L V8	5.7L V8	6.2L V8	
Standard Battery: Cold Cranking Amps @ 0°F @ -20°F	525 390	430 330	525 390	430 330	570 425	525 390	430 330	570 425	525 390	430 330	570 425	525 405	430 330	570 425	630 490	525 405	570 425	630 490	525 405	570 425	
Reserve Capacity Minutes @ 80°F	90	90	90	90	90	90	90	90	90	90	90	90	90	90	115	90	90	115	90	90	
Optional Battery:	UA1	UA1	UA1	UA1	—	UA1	UA1	—	UA1	UA1	—	UA1	UA1	—	—	UA1	—	—	UA1	—	
Cold Cranking Amps @ 0°F @ -20°F	630 490	630 490	630 490	630 490	—	630 490	630 490	—	630 490	630 490	—	630 490	630 490	—	—	630 490	—	—	630 490	—	
Reserve Capacity Minutes @ 80°F	115	115	115	115	—	115	115	—	115	115	—	115	115	—	—	115	—	—	115	—	
Auxiliary Battery:	TP2	TP2	TP2	TP2	—	TP2	TP2	—	—	—	TP2	TP2	TP2	—	TP2	TP2	—	TP2	TP2	—	
Cold Cranking Amps @ 0°F @ -20°F	540 410	540 410	540 410	540 410	—	540 410	540 410	—	—	—	540 410	540 410	540 410	—	540 410	540 410	—	540 410	540 410	—	
Reserve Capacity Minutes @ 80°F	115	115	115	115	—	115	115	—	—	—	115	115	115	—	115	115	—	115	115	—	
Standard Generator: Max. Capacity (Amps)	85	85	85	85	85	85	85	85	85	85	85	85	85	85	85	85	85	85	85	85	
Max Watts @ 12 Volts	1020	1020	1020	1020	1020	1020	1020	1020	1020	1020	1020	1020	1020	1020	1020	1020	1020	1020	1020	1020	
Nominal Amp @ Idle (Approx.)	30	30	30	30	30	30	30	30	30	30	30	30	30	30	30	30	30	30	30	30	
Drive Pulley Ratio	2.7:1	2.7:1	2.7:1	2.7:1	3.7:1	2.7:1	2.7:1	3.7:1	2.7:1	2.7:1	3.7:1	2.7:1	2.7:1	3.7:1	3.1:1	2.7:1	3.7:1	3.1:1	2.7:1	3.7:1	
Model Number	CS130	CS130	CS130	CS130	CS130	CS130	CS130	CS130	CS130	CS130	CS130	CS130	CS130	CS130	CS130	CS130	CS130	CS130	CS130	CS130	
Optional Generator:	C60	C60	C60	C60	C60	C60	C60	C60	C60	C60	C60	C60	C60	C60	C60	C60	C60	C60	C60	C60	
Max. Capacity (Amps)	100	100	100	100	100	100	100	100	100	100	100	100	100	100	100	100	100	100	100	100	
Max Watts @ 12 Volts	1200	1200	1200	1200	1200	1200	1200	1200	1200	1200	1200	1200	1200	1200	1200	1200	1200	1200	1200	1200	
Nominal Amp @ Idle (Approx)	36	36	36	36	36	36	36	36	36	36	36	36	36	36	36	36	36	36	36	36	
Drive Pulley Ratio	3.1:1	3.1:1	3.1:1	3.1:1	3.7:1	3.1:1	3.1:1	3.7:1	3.1:1	3.1:1	3.7:1	3.1:1	3.1:1	3.7:1	3.1:1	3.1:1	3.7:1	3.1:1	3.1:1	3.7:1	
Model Number	CS130	CS130	CS130	CS130	CS130	CS130	CS130	CS130	CS130	CS130	CS130	CS130	CS130	CS130	CS130	CS130	CS130	CS130	CS130	CS130	

¹5.0L V8 with Automatic Transmission is equipped with a 525 CCA @ 0°F battery.

SPECIFICATIONS

TWO-WHEEL DRIVE (C) AND FOUR-WHEEL DRIVE (K)

KEY: REG TYPE MANUAL TRANS AND AUTOMATIC TRANS RED TYPE MANUAL TRANS ONLY
 BOLD TYPE AUTOMATIC TRANS ONLY

MODEL	C/K1500 REGULAR CAB SPORTSIDE/ FLEETSIDE/ WIDESIDE			C/K1500 REG. CAB-EXT. CAB FLEETSIDE/CLUB COUPE WIDESIDE				C/K2500 REG. CAB-EXT. CAB FLEETSIDE/CLUB COUPE WIDESIDE				C/K3500 REG. CAB-EXT. CAB FLEETSIDE/CLUB COUPE WIDESIDE		
	C/K10703/E62 C/K10703/E63			C/K10903 C/K10753-C/K10953/E63				C/K20903 C/K20753-C/K20953/E63				C/K30903 C/K30953/E63		
STANDARD COOLING SYSTEM														
Engine	4.3L	5.0L	5.7L	4.3L	5.0L	5.7L	6.2L ¹	4.3L	5.0L	5.7L	6.2L	5.7L	7.4L	6.2L
Standard Radiator Thickness (in.)	.93	.93	1.34	.93	.93	1.34	1.58	.93	.93	1.34	1.58	1.34	2.17	1.58
Total System Cap. (gal.)	3.6	3.8	3.9	3.6	3.8	3.9	6.2	3.6	3.8	3.9	6.2	3.9	6.3	6.2
Standard Fan (No. Blades x Diameter x Pitch)	3 x 19 x 2.0	3 x 19 x 2.0	3 x 19 x 2.0	3 x 19 x 2.0	3 x 19 x 2.0	3 x 19 x 2.0	5 x 20 x 2.56	3 x 19 x 2.0	3 x 19 x 2.0	3 x 19 x 2.0	5 x 20 x 2.56	3 x 19 x 2.0	5 x 20 x 2.56	5 x 20 x 2.56
OPTIONAL COOLING SYSTEMS														
Engine	4.3L	5.0L	5.7L	4.3L	5.0L	5.7L	6.2L ¹	4.3L	5.0L	5.7L	6.2L	5.7L	7.4L	6.2L
AUTOMATIC TRANS.	MX0	MX0	MX0	MX0	MX0	MX0	MX0	MX0	MX0	MX0	MX0	MX1 ²	MX1 ²	MX1 ²
Radiator Thickness (in.)	.93	1.34	1.34	.93	1.34	1.34	1.58	.93	.93	1.34	1.58	1.34	2.17	1.58
Total System Cap. (gal.)	3.6	3.8	3.8	3.6	3.8	3.8	6.2	3.4	4.2	3.8	6.2	3.8	6.3	6.2
Fan (No. Blades x Diameter x Pitch)	3 x 19 x 2.0	3 x 19 x 2.0	3 x 19 x 2.0	3 x 19 x 2.0	3 x 19 x 2.0	3 x 19 x 2.0	5 x 20 x 2.56	3 x 19 x 2.0	3 x 19 x 2.0	3 x 19 x 2.0	5 x 20 x 2.56	5 x 19.5 x 2.0	5 x 20 x 2.56	5 x 20 x 2.56
OPT. H.D. RADIATOR	V01 ²	V01 ²	V01 ²	V01 ²	V01 ²	V01 ²	V01 ²	V01 ²	V01 ²	V01 ²	V01 ²	V01 ²	V01 ²	—
Radiator Thickness (in.)	1.34	.93	1.34	1.34	.93	1.34	2.17	1.34	.93	1.34	2.17	1.34	2.17	—
Total System Cap. (gal.)	3.6	4.2	3.9	3.6	4.2	3.9	6.2	3.4	4.2	3.9	6.3	3.8	6.3	—
Fan (No. Blades x Diameter x Pitch)	5 x 19.5 x 2.0	5 x 19.5 x 2.0	5 x 19.5 x 2.0	5 x 19.5 x 2.0	5 x 19.5 x 2.0	5 x 19.5 x 2.0	5 x 20 x 2.56	5 x 19.5 x 2.0	5 x 19.5 x 2.0	5 x 19.5 x 2.0	5 x 20 x 2.56	5 x 19.5 x 2.0	5 x 20 x 2.56	—
OPT. AIR CONDITIONING	C60	C60	C60	C60	C60	C60	C60	C60	C60	C60	C60	C60	C60	C60
Radiator Thickness (in.)	1.34	.93	1.34	1.34	.93	1.34	1.58	1.34	.93	1.34	1.58	1.34	2.17	2.17
Total System Cap. (gal.)	3.6	3.8	3.9	3.6	3.8	3.9	6.2	3.4	4.2	3.9	6.2	3.9	6.3	6.2
Fan (No. Blades x Diameter x Pitch)	5 x 19.5 x 2.0	5 x 19.5 x 2.0	5 x 19.5 x 2.0	5 x 19.5 x 2.0	5 x 19.5 x 2.0	5 x 19.5 x 2.0	5 x 20 x 2.56	5 x 19.5 x 2.0	5 x 19.5 x 2.0	5 x 19.5 x 2.0	5 x 20 x 2.56	5 x 19.5 x 2.0	5 x 20 x 2.56	5 x 20 x 2.0
OPT. ENGINE OIL COOLER	KC4	KC4	KC4	KC4	KC4	KC4	—	KC4	KC4	KC4	—	—	—	KC4
Radiator Thickness (in.)	1.34	1.34	1.34	1.34	1.34	1.34	—	1.34	1.34	1.34	—	—	—	2.17
Total System Cap. (gal.)	3.6	3.9	3.9	3.6	3.9	3.9	—	3.8	4.2	3.9	—	—	—	6.2
Fan (No. Blades x Diameter x Pitch)	5 x 19.5 x 2.0	5 x 19.5 x 2.0	5 x 19.5 x 2.0	5 x 19.5 x 2.0	5 x 19.5 x 2.0	5 x 19.5 x 2.0	—	5 x 19.5 x 2.0	5 x 19.5 x 2.0	5 x 19.5 x 2.0	—	—	5 x 20 x 2.56	—
OPT. TRANS. OIL COOLER AND ENG. OIL COOLER	KC4/V02	KC4/V02	KC4/V02	KC4/V02	KC4/V02	KC4/V02	—	KC4/V02	KC4/V02	KC4/V02	—	—	KC4/V02	—
Radiator Thickness (in.)	1.34	1.34	1.34	1.34	1.34	1.34	—	1.34	1.34	1.34	—	—	—	2.17
Total System Cap. (gal.)	3.6	3.9	3.9	3.6	3.9	3.9	—	3.9	3.9	3.9	—	—	—	6.2
Fan (No. Blades x Diameter x Pitch)	5 x 19.5 x 2.0	5 x 19.5 x 2.0	5 x 19.5 x 2.0	5 x 19.5 x 2.0	5 x 19.5 x 2.0	5 x 19.5 x 2.0	—	5 x 19.5 x 2.0	5 x 19.5 x 2.0	5 x 19.5 x 2.0	—	—	5 x 20 x 2.56	—
OPT. H.D. RADIATOR AND ENGINE OIL COOLER	V02 ⁴	V02 ⁴	V02 ⁴	V02 ⁴	V02 ⁴	V02 ⁴	V02 ⁴	V02 ⁴	V02 ⁴	V02 ⁴	V02 ⁴	V02 ⁴	—	V02 ⁴
Radiator Thickness (in.)	1.34	1.34	1.34	1.34	1.34	1.34	2.17	1.34	1.34	1.34	2.17	—	—	2.17
Total System Cap. (gal.)	3.9	3.9	3.9	3.9	3.9	3.9	6.2	3.9	3.9	3.9	6.2	—	—	6.2
Fan (No. Blades x Diameter x Pitch)	5 x 19.5 x 2.0	5 x 19.5 x 2.0	5 x 19.5 x 2.0	5 x 19.5 x 2.0	5 x 19.5 x 2.0	5 x 19.5 x 2.0	5 x 20 x 2.56	5 x 19.5 x 2.0	5 x 19.5 x 2.0	5 x 19.5 x 2.0	5 x 20 x 2.56	—	—	5 x 19.5 x 2.56
OPT. AIR CONDITIONING AND TRANS. OIL COOLER	—	—	—	—	—	—	—	—	—	—	—	—	—	—
Radiator Thickness (in.)	—	—	—	—	—	—	2.17	—	—	—	2.17	—	—	—
Total System Cap. (gal.)	—	—	—	—	—	—	5.2	—	—	—	5.2	—	—	—
Fan (No. Blades x Diameter x Pitch)	—	—	—	—	—	—	5 x 20 x 2.56	—	—	—	5 x 20 x 2.56	—	—	—

¹ 6.2L Diesel N/A in California on 10 Series Model
² N.A. C60 Air or V02 Cooling

³ MX1 Automatic Trans requires V02 H.D. Cooling
⁴ Included w/ Z82 Training

SPECIFICATIONS

TWO-WHEEL DRIVE (C)

MODEL	C1500 REG. CAB SPORTSIDE/ FLEETSIDE/ WIDESIDE		C1500 REG. CAB FLEETSIDE/ WIDESIDE	C1500 EXT. CAB FLEETSIDE/ CLUB COUPE WIDESIDE		C2500 REG. CAB FLEETSIDE/ WIDESIDE		C2500 EXT. CAB FLEETSIDE/ CLUB COUPE WIDESIDE			C3500 REGULAR CAB		C3500 EXTENDED CAB		
	MODEL NUMBER	C10703/ E62	C10703/ E63	C10903/E63	C10753/ E63	C10953/ E63	C20903/E63		C20753/ E63	C20953/E63		C30903		C30953	
								C6P			C6P		R05		R05
EXTERIOR DIMENSIONS															
BODY:															
Wheelbase (in.)	117.5	117.5	131.5	141.5	155.5	131.5	131.5	141.5	155.5	155.5	131.5	131.5	155.5	155.5	
Overall Length (in.) w/o Rear Bumper	194.0	194.1	212.6	223.0	237.0	212.6	212.6	223.0	237.0	212.6	212.6	212.6	212.6	212.6	
Overall Height (in.) Nominal	70.4	70.4	70.4	70.6	70.6	73.0	75.5	74.0	74.0	75.6	75.5	75.5	75.6	75.6	
Overall Width (in.)	76.8	76.8	76.8	76.8	76.8	76.8	76.8	76.8	76.8	76.8	76.8	76.8	76.8	76.8	
Bumper To Axle—Front	34.9	34.9	34.9	34.9	34.9	34.9	34.9	34.9	34.9	34.9	34.9	34.9	34.9	34.9	
Rear (in.)	41.6	46.6	46.5	41.6	46.5	46.5	46.5	41.6	46.5	46.5	46.5	46.5	46.5	46.5	
Cab Axle (in.)	41.8	41.8	55.9	55.9	55.9	55.9	55.9	55.9	55.9	55.9	55.9	55.9	55.9	55.9	
Cab To End of Frame (in.)	78.7	78.7	97.6	78.7	97.6	97.6	97.6	78.7	97.6	97.6	97.6	97.6	97.6	97.6	
Bumper To Back of Cab (in.)	110.6	110.6	110.6	134.6	134.6	110.6	110.6	134.6	134.6	134.6	110.6	110.6	134.6	134.6	
Ground To Top of Rear Load Floor (in.)	29.0	29.0	29.0	29.0	29.0	31.6	34.2	31.6	31.6	34.0	34.0	34.0	34.0	34.0	
Ground Clearance—Front	7.0	7.0	7.0	7.2	7.2	7.8	8.4	7.9	7.9	8.4	8.4	7.9	8.4	7.9	
Rear (in.)	8.4	8.4	8.4	7.1	7.1	7.8	8.1	7.7	7.7	8.0	8.1	7.6	8.0	7.6	
CARGO BOX:															
Length (in.)	78.7	78.7	97.6	78.7	97.6	97.6	97.6	78.6	97.6	97.6	97.6	97.6	97.6	97.6	
Inside Width At Top (in.)	49.1	61.9	61.9	49.1	61.9	61.9	61.9	61.9	61.9	61.9	61.9	61.9	61.9	61.9	
Inside Width at Floor (in.)	49.1	64.7	64.7	49.1	64.7	64.7	64.7	64.7	64.7	64.7	64.7	64.7	64.7	64.7	
Inside Width at Wheelhousing (in.)	49.1	49.1	49.1	49.1	49.1	49.1	49.1	49.1	49.1	49.1	49.1	49.1	49.1	49.1	
Inside Height (in.)	19.3	19.3	19.3	19.3	19.3	19.3	19.3	19.3	19.3	19.3	19.3	19.3	19.3	19.3	
Tailgate Width (in.) Top	50.9	62.0	62.0	62.0	62.0	62.0	62.0	62.0	62.0	62.0	62.0	62.0	62.0	62.0	
INTERIOR DIMENSIONS															
CAB:															
Headroom (in.)	40.0	40.0	40.0	40.0	40.0	40.0	40.0	40.0	40.0	40.0	40.0	40.0	40.0	40.0	
Legroom (in.)	41.7	41.7	41.7	41.7	41.7	41.7	41.7	41.7	41.7	41.7	41.7	41.7	41.7	41.7	
Shoulder Room (in.)	66.0	66.0	66.0	66.0	66.0	66.0	66.0	66.0	66.0	66.0	66.0	66.0	66.0	66.0	
Extended Cab Area Volume (cu. ft.) w/o Rear Seat	—	—	—	40.5	40.5	—	—	40.5	40.5	40.5	—	—	40.5	40.5	
FUEL TANK															
Std. Tank Nominal (gal.)	25.0	25.0	25.0	25.0	25.0	25.0	25.0	25.0	25.0	25.0	25.0	25.0	25.0	25.0	
Location of Tank	Inboard LH Frame Rail	Inboard LH Frame Rail	Inboard LH Frame Rail	Inboard LH Frame Rail	Inboard LH Frame Rail	Inboard LH Frame Rail	Inboard LH Frame Rail	Inboard LH Frame Rail	Inboard LH Frame Rail	Inboard LH Frame Rail	Inboard LH Frame Rail	Inboard LH Frame Rail	Inboard LH Frame Rail	Inboard LH Frame Rail	
Location of Filler	Left Side	Left Side	Left Side	Left Side	Left Side	Left Side	Left Side	Left Side	Left Side	Left Side	Left Side	Left Side	Left Side	Left Side	
Optional Tank Nominal (gal.)	—	34	—	34	34	34	—	34	34	34	34	34	34	34	
Location of Tank	—	Inboard LH Frame Rail	Inboard LH Frame Rail	Inboard LH Frame Rail	Inboard LH Frame Rail	Inboard LH Frame Rail	Inboard LH Frame Rail	Inboard LH Frame Rail	Inboard LH Frame Rail	Inboard LH Frame Rail	Inboard LH Frame Rail	Inboard LH Frame Rail	Inboard LH Frame Rail	Inboard LH Frame Rail	
Location of Tank	—	Left Side	Left Side	Left Side	Left Side	Left Side	Left Side	Left Side	Left Side	Left Side	Left Side	Left Side	Left Side	Left Side	

FOUR-WHEEL DRIVE (K)

MODEL	K1500 REG. CAB SPORTSIDE/FLEETSIDE/WIDESIDE		K1500 REG. CAB FLEETSIDE/WIDESIDE	K1500 EXT. CAB FLEETSIDE/CLUB COUPE WIDESIDE		K2500 REG. CAB FLEETSIDE/WIDESIDE		K2500 EXT. CAB FLEETSIDE/CLUB COUPE WIDESIDE			K3500 REG. CAB FLEETSIDE/WIDESIDE		K3500 EXT. CAB FLEETSIDE/CLUB COUPE WIDESIDE		
	MODEL NUMBER	K10703/E62	K10703/E63	K10903/E63	K10753/E63	K10953/E63	K20903/E63		K20753/E63	K20953/E63		K30903		K30953	
								C6P					R05		R05
EXTERIOR DIMENSIONS															
BODY:															
Wheelbase (in.)	117.5	117.5	131.5	141.5	155.5	131.5	131.5	141.5	155.5	131.5	131.5	155.5	131.5	155.5	
Overall Length (in.) w/o Rear Bumper	194.0	194.1	212.6	223.0	237.0	212.6	212.6	223.0	237.0	212.6	212.6	212.6	212.6	212.6	
Overall Height (in.) Nominal	73.8	73.8	73.8	73.8	73.8	74.3	75.8	74.4	74.4	75.8	75.8	75.8	75.8	75.8	
Overall Width (in.)	76.8	76.8	76.8	76.8	76.8	76.8	76.8	76.8	76.8	76.8	76.8	76.8	76.8	76.8	
Bumper To Axle—Front	34.9	34.9	34.9	34.3	34.9	34.9	34.9	34.9	34.9	34.9	34.9	34.9	34.9	34.9	
Rear (in.)	41.6	41.6	46.5	41.6	46.5	46.5	46.5	46.5	46.5	46.5	46.5	46.5	46.5	46.5	
Cab Axle (in.)	41.8	41.8	55.9	55.9	55.9	55.9	55.9	55.9	55.9	55.9	55.9	55.9	55.9	55.9	
Cab To End of Frame (in.)	78.7	78.7	97.6	78.7	97.6	97.6	97.6	97.6	97.6	97.6	97.6	97.6	97.6	97.6	
Bumper To Back of Cab (in.)	110.6	110.6	110.6	134.6	134.6	110.6	110.6	134.6	134.6	134.6	110.6	110.6	134.6	134.6	
Ground To Top of Rear Load Floor (in.)	32.4	32.4	32.4	32.4	32.4	32.9	32.4	32.9	32.9	34.4	34.4	34.4	34.4	34.4	
Ground Clearance—Front	8.6	8.6	8.6	9.2	9.2	8.7	7.8	9.2	9.2	9.2	9.2	7.2	9.2	7.2	
Rear (in.)	9.0	9.0	9.0	9.6	9.6	7.7	8.1	8.2	8.1	8.1	8.1	7.4	8.1	7.4	
CARGO BOX:															
Length (in.)	78.7	78.7	97.6	78.7	97.6	97.6	97.6	97.6	97.6	97.6	97.6	97.6	97.6	97.6	
Inside Width At Top (in.)	49.1	61.9	61.9	49.1	61.9	61.9	61.9	61.9	61.9	61.9	61.9	61.9	61.9	61.9	
Inside Width at Floor (in.)	49.1	64.7	64.7	49.1	64.7	49.1	64.7	64.7	64.7	64.7	64.7	64.7	64.7	64.7	
Inside Width at Wheelhousing (in.)	49.1	49.1	49.1	49.1	49.1	49.1	49.1	49.1	49.1	49.1	49.1	49.1	49.1	49.1	
Inside Height (in.)	19.3	19.3	19.3	19.3	19.3	19.3	19.3	19.3	19.3	19.3	19.3	19.3	19.3	19.3	
Tailgate Width (in.) Top	50.9	62.0	62.0	62.0	62.0	62.0	62.0	62.0	62.0	62.0	62.0	62.0	62.0	62.0	
INTERIOR DIMENSIONS															
CAB:															
Headroom (in.)	40.0	40.0	40.0	40.0	40.0	40.0	40.0	40.0	40.0	40.0	40.0	40.0	40.0	40.0	
Legroom (in.)	41.7	41.7	41.7	41.7	41.7	41.7	41.7	41.7	41.7	41.7	41.7	41.7	41.7	41.7	
Shoulder Room (in.)	66.0	66.0	66.0	66.0	66.0	66.0	66.0	66.0	66.0	66.0	66.0	66.0	66.0	66.0	
Extended Cab Area Volume (cu. ft.) w/o Rear Seat	—	—	—	40.5	40.5	—	—	40.5	40.5	40.5	—	—	40.5	40.5	
FUEL TANK															
Std. Tank Nominal (gal.)	25.0		25.0	25.0		25.0	25.0	25.0	25.0	25.0	25.0	25.0	25.0	25.0	
Location of Tank	Inboard LH Frame Rail		Inboard LH Frame Rail	Inboard LH Frame Rail		Inboard LH Frame Rail	Inboard LH Frame Rail	Inboard LH Frame Rail			Inboard LH Frame Rail		Inboard LH Frame Rail		
Location of Filler	Left Side		Left Side	Left Side		Left Side	Left Side	Left Side			Left Side		Left Side		
Optional Tank Nominal (gal.)	—		34	—	34	34	34	—	34	34	34	34	34	34	
Location of Tank	—		Inboard LH Frame Rail	Inboard LH Frame Rail		Inboard LH Frame Rail	Inboard LH Frame Rail	Inboard LH Frame Rail			Inboard LH Frame Rail		Inboard LH Frame Rail		
Location of Tank	—		Left Side	Left Side		Left Side	Left Side	Left Side			Left Side		Left Side		

WEIGHTS

■ This page contains the weights of trim, paint and optional equipment. These weights are used when calculating payload capacity, gross axle weight, axle reserve capacity, gross vehicle weight and total reserve capacity.

For more information on calculating these capacities, consult the "FORMS" section of this book.

MODEL WEIGHTS

MODEL/BODY	WEIGHT (lbs.)		
	FRONT	REAR	TOTAL
C10703/E62	2309	1791	4100
K10703/E62	2616	1923	4539
C10703/E63			
C10753/E63	2784	2130	4914
C10903/E63	2378	1793	4171
C10953/E63	2816	2157	4973
K10703/E63			
K10753/E63	3097	2229	5326
K10903/E63	2700	1919	4619
K10953/E63	3142	2260	5402
C20753/E63	2816	2197	5013
C20903/E63	2449	1903	4352
C20903/E63/C6P	2740	2093	4833
C20953/E63	2857	2222	5079
C20953/E63/C6P	3164	2381	5545
K20753/E63	3044	2253	5297
K20903/E63	2735	1977	4712
K20903/E63/C6P	3012	2128	5140
K20953/E63	3097	2224	5321
K20953/E63/C6P	3435	2445	5880
C30903/E63	2998	2198	5196
C30953/E63	3420	2487	5907
K30903/E63	3314	2256	5570
K30953/E63	3735	2561	6296
C10753/E63/B3J	3219	2175	5394
C10903/E63/B3J	2844	1892	4736
C10953/E63/B3J	3248	2191	5439
K10753/E63/B3J	3564	2354	5918
K10903/E63/B3J	3176	1987	5163
K10953/E63/B3J	3613	2333	5946
C20753/E63/B3J	3279	2242	5521
C20903/E63/B3J	2907	1958	4865
C20903/E63/B3J/C6P	2986	2089	5075
C20953/E63/B3J	3309	2260	5569
C20953/E63/B3J/C6P	3406	2601	6007
C20753/E63/B3J	3510	2296	5806
K20903/E63/B3J	3191	2018	5209
K20903/E63/B3J/C6P	3301	2143	5444
K20953/E63/B3J	3553	2323	5876
K20953/E63/B3J/C6P	3721	2451	6172

CURB WEIGHTS

MODEL/BODY	WEIGHT (lbs.)		
	FRONT	REAR	TOTAL
C10703/E62	2055	1455	3510
K10703/E62	2362	1587	3949
C10703/E63			
C10753/E63	2310	1565	3875
C10903/E63	2104	1478	3582
C10953/E63	2304	1630	3934
K10703/E63			
K10753/E63	2623	1664	4287

CURB WEIGHTS—Continued

MODEL/BODY	WEIGHT (lbs.)		
	FRONT	REAR	TOTAL
K10903/E63	2426	1604	4030
K10953/E63	2630	1733	4363
C20753/E63	2342	1632	3974
C20903/E63	2175	1588	3763
C20903/E63/C6P	2466	1778	4244
C20953/E63	2345	1695	4040
C20953/E63/C6P	2652	1854	4506
K20753/E63	2570	1688	4258
K20903/E63	2461	1662	4123
K20903/E63/C6P	2738	1824	4562
K20953/E63	2585	1697	4282
K20953/E63/C6P	2923	1918	4841
C30903/E63	2724	1883	4607
C30953/E63	2908	1960	4868
K30903/E63	3040	1941	4981
K30953/E63	3223	2034	5257
C10753/E63/B3J	2743	1595	4338
C10903/E63/B3J	2568	1562	4130
C10953/E63/B3J	2734	1649	4383
K10753/E63/B3J	3088	1774	4862
K10903/E63/B3J	2900	1657	4557
K10953/E63/B3J	3099	1791	4890
C20753/E63/B3J	2803	1662	4465
C20903/E63/B3J	2631	1628	4259
C20903/E63/B3J/C6P	2710	1759	4469
C20953/E63/B3J	2795	1718	4513
C20953/E63/B3J/C6P	2892	2059	4951
K20753/E63/B3J	3034	1716	4750
K20903/E63/B3J	2915	1688	4603
K20903/E63/B3J/C6P	3025	1813	4838
K20953/E63/B3J	3039	1781	4820
K20953/E63/B3J/C6P	3207	1909	5116

WEIGHT DISTRIBUTION

MODEL/BODY	WEIGHT DISTRIBUTION (percent)	
	FRONT	REAR
C10703/E62	1	99
K10703/E62	1	99
C10703/E63	1	99
C10753/E63		
C10903/E63	4	96
C10953/E63	3	97
K10703/E63	1	99
K10753/E63		
K10903/E63	4	96
K10953/E63	3	97
C20753/E63		
C20903/E63	4	96
C20903/E63/C6P	4	96
C20953/E63	3	97
C20953/E63/C6P	3	97
K20753/E63		
K20903/E63	4	96
K20903/E63/C6P	4	96
K20953/E63	3	97
K20953/E63/C6P	3	97
C30903/E63		
C30953/E63		
K30903/E63	4	96
K30953/E63	3	97
C10753/E63/B3J		
C10903/E63/B3J	4	96
C10953/E63/B3J	3	97
K10753/E63/B3J		
K10903/E63/B3J	4	96

WEIGHT DISTRIBUTION—Cont.

MODEL/BODY	WEIGHT DISTRIBUTION (percent)	
	FRONT	REAR
K10953/E63/B3J	3	97
C20753/E63/B3J		
C20903/E63/B3J	4	96
C20903/E63/B3J/C6P	4	96
C20953/E63/B3J	3	97
C20953/E63/B3J/C6P	3	97
C20753/E63/B3J		
K20903/E63/B3J	4	96
K20903/E63/B3J/C6P	4	96
K20953/E63/B3J	3	97
K20953/E63/B3J/C6P	3	97

TRIM WEIGHTS

CODE	CONDITION	WEIGHT (lbs.)	
		FRONT	REAR
***1		0	0
***2	CK10703	-74	-64
	CK10903		
	CK20903	-73	-54
	CK10953		
	CK20953		
	CK30953	-82	-45
***3		7	4

PAINT WEIGHTS

CODE	CONDITION	WEIGHT (lbs.)	
		FRONT	REAR
ZY1		0	0
ZY2		0	0
ZY3		0	0
ZY4		0	0

OPTION WEIGHTS

CODE	CONDITION	WEIGHT (lbs.)	
		FRONT	REAR
-A-			
AA3		0	0
AJ1		1	1
AK9		5	5
AM7		248	288
A01		0	0
A20		1	1
A28		2	2
A82		3	3
-B-			
BYP	CC10703	24	12
	CK10703	5	6
BYQ		0	0
B32	C-K10703	5	4
	C-K10903		
	C-K20903		
	C-K30903	6	4
	C-K10953		
	C-K20953		
	C-K30953	6	3
B33		2	3
B74		0	0

WEIGHTS

OPTION WEIGHTS—Continued

CODE	CONDITION	WEIGHT (lbs.)	
		FRONT	REAR
	—B—		
B84	C-K10703, C-K10903-53, C-K20903-53, C-K30903-53	2	4
B85	C-K10703, C-K10903-53, C-K20903-53, C-K30903-53	2	4
B96		1	0
	—C—		
CD4		0	0
C42		6	1
C49		0	0
C60	C-K10703/LB4 C-K10703/L03 C-K10903, C-K20903/LB4 C-K10903, C-K20903/L03 C-K30903/L05 C-K30903/L19 C-K10953, C-K20953/LB4 C-K10953, C-K20953/L03 C-K30953/L05 C-K30953/ L19/LL4 C-K30953/LH6 C-K30953/LB4 C-K30903/LB4 C-K30903/LL4	46 43 51 49 52 52 52 52 43 44 41 45 45 44 45	0 -1 0 1 -1 -1 0 0 0 0 0 0 0 0 0 0
	—D—		
DF2	C-K10703 C-K10903, C-K20903, C-K30903	3 3	2 1
D44		3	0
D45		3	0
D55		12	4
	—F—		
F44	C10903 C10953 K10903 K10953	12 0 15 0	0 0 9 75
F51		0	0
F59	C1500, 2500, 3500 K1500, 2500, 3500	27 15	0 -1
F60	K1500, 2500, 3500	4	0
	—G—		
G80		0	3
	—K—		
KC4		10	0
K05		10	0
K19		0	0
K34		4	0
K46	w/o LH6 or LL4 w/LH6 or LL4	2 0	0 0
	—L—		
LH6		0	0
LL4		0	0

OPTION WEIGHTS—Continued

CODE	CONDITION	WEIGHT (lbs.)	
		FRONT	REAR
	—L—		
L03	C10703 C10903 C10953 C20903 C20953 K10703 K10903 K10953 K20903 K20953	81 81 80 83 83 86 86 85 86 85	-5 -4 -4 -5 -4 -5 -4 -4 -4 -4
L05	C10703 C10903 C10953 C20903 C20953 K10703 K10903 K10953 K20903 K20953	104 105 103 105 103 106 107 106 108 106	7 8 8 8 8 7 8 8 8 8
L19	C-K30903/R05 C30903/R05 K30903/R05 C-K30953/R05 C30953/R05 K30953/R05	225 256 254 228 254 254	3 106 104 7 109 105
	—M—		
MM4	C10903/LB4 C10953/LB4 C20903/LB4 C20953/LB4 K10703/LB4 K10903/LB4 K10953/LB4 K20903/LB4 K20953/LB4 C10903/L05 C10953/L05 C20903/L05 C20953/L05 K10703/L05 K10903/L05 K10753/L05 K20903/L05 K20953/L05	67 63 67 64 74 74 77 80 76 80 67 63 67 62 74 77 80 76 80	32 13 34 15 34 34 21 23 19 34 14 34 15 27 27 21 23 19
MM5		0	0
MX0	C10703/LB4 C10903/LB4 C10953/LB4 C20903/LB4 C20953/LB4 K10703/LB4 K10903/LB4 K10953/LB4 K20903/LB4 K20953/LB4 C10903/LH6 C10953/LH6 C20903/LH6 C20953/LH6 K10903/LH6 K10953/LH6 K20903/LH6	-18 -16 -16 -3 -3 -6 -4 0 10 13 -86 -58 -76 -70 -67 -67 -63	16 15 12 14 12 22 20 17 19 16 -18 -4 -19 -2 -6 -2 -2

OPTION WEIGHTS—Continued

CODE	CONDITION	WEIGHT (lbs.)	
		FRONT	REAR
	—M—		
	K20953/LH6 C10703/L03 C10903/L03 C10953/L03 C20903/L03 C20953/L03 K10703/L03 K10903/L03 K20953/L03 C10703/L05 C10903/L05 C10953/L05 C20903/L05 C20953/L05 K10703/L05 K10903/L05 K10953/L05 K20903/L05 K20953/L05	-64 -2 3 1 15 16 31 34 39 9 11 10 11 10 28 31 34 31 34	-1 18 24 13 15 13 25 22 19 18 16 13 16 13 25 23 19 23 19
MX1	C10703/LB4/LH6 C10903/LB4/LH6 C10953/LB4/LH6 C20903/LB4/LH6 C20953/LB4/LH6 K10703/LB4/LH6 K10903/LB4/LH6 K10953/LB4/LH6 K20903/LB4/LH6 K20953/LB4/LH6 C10703/L03 C10903/L03 C10953/L03 C20903/L03 C20953/L03 K10703/L03 K10903/L03 K10953/L03 K20903/L03 K20953/L03 C30903/L19 C30953/L19 K30903/L19 K30953/L19 C30903/LL4 C30953/LL4 K30903/LL4 K30953/LL4 C30903/L05 C30953/L05 K30903/L05 K30953/L05	-14 11 -11 8 4 9 12 15 15 15 4 8 7 22 22 34 37 40 39 43 -38 -37 -40 -40 -58 -57 -63 -63 -45 -45 -48 -49	17 20 13 31 13 22 20 17 20 17 19 21 14 16 14 26 23 19 23 19 1 2 0 0 1 2 2 2 1 2 -1 -1
	—N—		
NJ8	C-K10903, C-K20903, C-K30903 w/o LH6 or LL4 C-K10953, C-K20953, C-K30953 w/o LH6 or LL4 C-K10903, C-K20903, C-K30903 w/LH6 or LL4 C-K10953, C-K20953, C-K30953 w/LH6 or LL4	15 13 17	45 47 49
NK3		0	0

WEIGHTS

OPTION WEIGHTS—Continued

CODE	CONDITION	WEIGHT (lbs.)		
		FRONT	REAR	
NZZ	—N—			
	K10703	9	3	
	K10903, K20903, K30903	9	2	
	K10953, K20953, K30953	10	2	
	N05	0	0	
N31	0	0		
N33	1	0		
N67	3	3		
N90	C10703, 10903	-6	-6	
	C10953	-10	-10	
PA6	—P—			
	C10703, C10903/P13	16	28	
	C10703, C10903/P13	20	24	
	C10953/P13	13	22	
	C10953/P13	15	19	
	K10703, K10903/P13	25	44	
	K10703, K10903/P13	31	38	
	K10953/P13	23	40	
	K10953/P13	27	36	
	PF4	K1500	-11	-11
	P01		3	3
	P06		3	3
	P13	C10703, C-K10903, C-K20903, C-K30903	3	-10
		C-K10953, C-K20953, C-K30953	2	-9
		—R—		
R04		0	0	
R05		C3500	30	308
	K3500	65	323	
TP2	—T—			
	C-K10703	47	-5	
	C-K10903, C-K20903, C-K30903	47	-4	
	C-K10953, C-K20953, C-K30953	46	-4	
	TR9	1	0	
	TT4	0	0	
		—U—		
UA1/LB4/L05	7	-1		
UA1/L03	8	-1		
UF2	1	1		
UK4	4	1		
UK5	6	2		
UM6	5	1		
UM7	7	0		
UN3	7	1		
UY7	0	2		
U01	1	0		
U37	0	0		
U63	3	1		

OPTION WEIGHTS—Continued

CODE	CONDITION	WEIGHT (lbs.)		
		FRONT	REAR	
U66	—U—	2	2	
	U73	1	0	
VBA	—V—			
	VB3	5	4	
	C-K10703, C-K10903, C-K20903, C-K30903	20	86	
	C-K10953, C-K20953, C-K30953	-19	84	
	VG3	2	0	
VK3	1	0		
VR4	C-K10903, C-K20903, C-K30903	-16	84	
	C-K10953, C-K20953, C-K30953	-13	62	
	V01	6	-1	
	V02	4	0	
	V10	0	0	
V22	4	0		
V27	3	0		
V43	C-K10703, C-K10903, C-K20903, C-K30903	-20	86	
	C-K10953, C-K20953, C-K30953	-19	84	
	V76	C-K10703, C-K10903, C-K20903, C-K30903	11	-2
	C-K10953, C-K20953, C-K30953	11	-1	
	—X—			
XBK	K10953, K20953	0	0	
	XBL	K10953, K20953	0	0
XBN	K10953, K20953	2	0	
XBX	K10953, K20953	2	0	
XDE	C3500, K3500	-13	0	
XDL	K3500	-8	0	
XET	C10703, C10903	12	0	
XEU	C10703, C10903	12	0	
XEV	C10703, C10903	12	0	
XFL	C10703, C10903	17	0	
XFM	C10953	0	0	
	C10703, C10903	19	0	
	C10953	1	0	
XFN	C10703, C10903	12	0	
	C10953	-5	0	
XGK	K20903	19	0	
	K3500	4	0	
XGL	K10703, K10903	20	0	
	K10953	4	0	
XGM	K10703, K10903	20	0	
	K10953	4	0	
XHE	K10703, K10903	0	0	
	C3500	-22	0	
XHH	C2500, K20903	15	0	

OPTION WEIGHTS—Continued

CODE	CONDITION	WEIGHT (lbs.)	
		FRONT	REAR
XHJ	—X—		
	C-K3500	0	0
	K10703, K10903	3	0
	K10703, K10903	3	0
	C2500, C3500	-15	0
	C2500, K20903	0	0
	K20903, K3500	2	0
	K10703, K10903	2	0
YBK	—Y—		
	K10953, K20953	0	0
	K10953, K20953	0	0
	K10953, K20953	0	2
	K10953, K20953	0	2
	C3500	0	59
	K3500	0	69
	C10703, C10903	0	12
	C10703, C10903	0	12
	C10703, C10903	0	12
C-K10703, C-K10903, C-K20903, C-K30903, C-K10953, C-K20953, C-K30953	16	14	
YFL	C10703, C10903	0	17
	C10953	0	0
YFM	C10703, C10903	0	19
	C10953	0	1
YFN	C10703, C10903	0	12
	C10903	0	-5
YF5		11	0
YGK	C2500, K20903	0	19
	C-K3500	0	4
YGL	K10703, K10903	0	20
	K10953	0	4
YGM	K10703, K10903	0	20
	K10953	0	4
YHE	K10703, K10903	0	0
YHH	C2500, K20903	0	15
	C-K3500	0	0
YHJ	K10703, K10903	0	3
YHN	K10703, K10903	0	3
YHP	C-K3500	0	60
	C2500, K20903	0	0
YHR	C2500, K20903	0	2
	C-K3500	0	64
YHV	K10703, K20903	0	2
ZBK	—Z—		
	K10953/P13	0	0
	K10953/P13	32	-32
	K20953/P13	-12	84
	K20953/P13	21	52
	K10953/P13	0	0
	K10953/P13	32	-32
	K20953/P13	-12	84
	K20953/P13	21	52
	K10953/P13	0	1
	K10953/P13	32	-31
	K20953/P13	-12	86
ZBL	K10953/P13	21	53
	K10953/P13	0	1
	K10953/P13	32	-31
ZBN	K10953/P13	-12	86
	K20953/P13	21	53
ZBX	K10953/P13	0	1
	K10953/P13	32	-31
	K20953/P13	-12	86

OPTION WEIGHTS—Continued

CODE	CONDITION	WEIGHT (lbs.)	
		FRONT	REAR
	—Z—		
	K20953/P13	-12	86
	K20953/P13	21	53
ZDE	C-K3500	-13	88
ZDL	K3500	-14	91
ZET	C10703,		
	C10903/P13	0	5
	C10703,		
	C10903/P13	22	-17
ZEU	C10703,		
	C10903/P13	0	5
	C10703,		
	C10903/P13	22	-17
ZEV	C10703,		
	C10903/P13	0	5
	C10703,		
	C10903/P13	22	-17
ZFL	C10703,		
	C10903/P13	-1	11
	C10703,		
	C10903/P13	23	-12
	C10953/P13	0	0
	C10953/P13	20	-20
ZFM	C10703,		
	C10903/P13	-1	11
	C10703,		
	C10903/P13	23	-13
	C10953/P13	0	0
	C10953/P13	20	-20
ZFN	C10703,		
	C10903/P13	-1	11
	C10703,		
	C10903/P13	23	-13
	C10953/P13	0	0
	C10953/P13	20	-20
ZGK	C2500,		
	K20903/P13	20	57
	C2500,		
	K20903/P13	-15	92
	C-K3500/P13	-15	95
	C-K3500/P13	21	60

OPTION WEIGHTS—Continued

CODE	CONDITION	WEIGHT (lbs.)	
		FRONT	REAR
	—Z—		
ZGL	K107/K10903/PA6		
	/P13	-4	27
	/P13/PA6	33	-11
	K10953/PA6/P13	-2	16
	/P13/PA6	30	-16
	K107/K10903/		
	PA6/P13	-2	-12
	/PA6/P13	36	-26
	K10953/PA6/P13	0	3
	PA6/P13	32	-30
ZGM	K107/K10903/PA6		
	/P13	-4	27
	/P13/PA6	33	-11
	K10953/PA6/P13	-2	16
	/P13/PA6	30	-16
	K107/K10903/		
	PA6/P13	-2	12
	/PA6/P13	36	-26
	K10953/PA6/P13	0	3
	PA6/P13	32	-30
ZHE	K10703,		
	K10903/P13	27	-27
	/P13	0	0
ZHH	C2500,		
	K20903/P13	-14	89
	C2500,		
	K20903/P13	19	56
	C-K3500/P13	-15	93
	C-K3500/P13	20	58
ZHJ	K10703,		
	K10903/P13	28	-27
	K10703,		
	K10903/P13	0	0
ZHN	K10703, K10903		
	/P13	28	-27
	K10703,		
	K10903/P13	0	0

OPTION WEIGHTS—Continued

CODE	CONDITION	WEIGHT (lbs.)	
		FRONT	REAR
	—Z—		
ZHP	C2500,		
	K20903/P13	-14	82
	C2500, K20903		
	/P13	17	51
	C-K3500	-14	83
ZHQ	C2500,		
	K20903/P13	-13	80
	C2500, K20903		
	/P13	18	54
	C3500	-13	83
ZHR	C2500,		
	K20903/P13	-13	82
	C2500,		
	K20903/P13	18	51
	C-K3500	-13	83
ZHV	K10703,		
	K10903/P13	27	-27
ZQ2	C-K10703,	6	4
	C-K10903,		
	C-K20903,		
	C-K30903	7	4
	C-K10953,		
	C-K20953,		
	C-K30953	6	2
Z53		0	0
Z62	C-K10703,		
	C-K10903,		
	C-K20903,		
	C-K30903	12	10
	C-K10953,		
	C-K20953,		
	C-K30953	5	1
Z71	K10703, K10903,		
	K10953	1	1
Z81		0	0
Z82		0	0

OPTION SELECTION

KEY: S STANDARD
 O OPTIONAL
 — NOT AVAILABLE

- | | | | |
|---------------|----------------|----------------|----------------|
| 1. C10703/E62 | 6. C20903/E63 | 11. K10703/E62 | 16. K20903/E63 |
| 2. C10703/E63 | 7. C20753/E63 | 12. K10703/E63 | 17. K20753/E63 |
| 3. C10903/E63 | 8. C20953/E63 | 13. K10903/E63 | 18. K20953/E63 |
| 4. C10753/E63 | 9. C30903/E63 | 14. K10753/E63 | 19. K30903/E63 |
| 5. C10953/E63 | 10. C30953/E63 | 15. K10953/E63 | 20. K30953/E63 |

OPTION	CODE	DESCRIPTION	RESTRICTIONS	MODELS																			
				2-WHEEL DRIVE (C)										4-WHEEL DRIVE (K)									
				1	2	3	4	5	6	7	8	9	10	11	12	13	14	15	16	17	18	19	20
AIR CLEANER, PRE-CLEANER	K46			O	O	O	O	O	O	O	O	O	O	O	O	O	O	O	O	O			
AIR CONDITIONING	C60		N/A V10 Cold-Climate w/L03 Eng and MX0 Trans and GT4 Axle Reqs KC4 Eng Oil Cooler	O	O	O	O	O	O	O	O	O	O	O	O	O	O	O	O	O			
APPEARANCE, DELUXE FRONT	V22	Dark, argent grille w/bright trim and quad halogen headlamps—dual note horn	Incl. w/YE9 Silverado/SLE	O	O	O	O	O	O	O	O	O	O	O	O	O	O	O	O	O			
AXLES, REAR	GQ1	Std. Axle Ratio	(See Powerteams)																				
Locking Differential	G80		Not Avail w/All Ratios																				
BATTERY		Delco Freedom																					
Auxiliary	TP2	540 Cold Cranking Amps	Incl w/Z81 Camper; N/A B3J Diesel Equipment	O	O	O	O	O	O	O	O	O	O	O	O	O	O	O	O	O			
Heavy-Duty	UA1	630 Cold Cranking Amps	Incl w/V10 Cold-Climate N/A L19 Engine or B3J Diesel	O	O	O	O	O	O	S	O	O	O	O	O	O	O	O	S	O			
BUMPER EQUIPMENT																							
Bumper, Painted	V43	Rear Step	Reqs E63 Body	O	O	O	O	O	O	O	O	O	O	O	O	O	O	O	O	O			
Bumper, Chromed	VG3	Deluxe Front w/Rub Strip	Incl w/Z62 Scottsdale/SLX or YE9 Silverado/SLE w/o BYP Sport Pkg	O	O	O	O	O	O	O	O	O	O	O	O	O	O	O	O	O			
Bumper, Chromed	VB3	Rear Step w/Rub Strip	Reqs VG3 Bumper	O	O	O	O	O	O	O	O	O	O	O	O	O	O	O	O	O			
Guards, Front Bumper	V27	Black	Reqs VG3 Bumper	O	O	O	O	O	O	O	O	O	O	O	O	O	O	O	O	O			
CAMPER SPECIAL CHASSIS EQUIPMENT	Z81	Basic Camper Group Incls DF2 Mirrors, F59 Stabilizer and NJ8 (34-gal) Fuel Tank; also TP2 (Aux) Battery w/o B3J Diesel Equipment	N/A D44 or D45 Mirrors; W/MX0 Trans Reqs V02 Cooling; W/MM4 or MM5 Trans Reqs V01 Cooling or C60 Air; w/o B3J Diesel Reqs KC4 Cooling					O	O	O	O	O											
CARRIER, SPARE WHEEL AND TIRE	P13	Side Mounted	N/A C/K10703 or E62 Body; N/A R05 Wheels		O	O	O	O	O	O	O												
CHASSIS	F44	Heavy-Duty	N/A C10703; Reqs XFL, XFM or XFN Tires on C10903; K10703 Reqs 3.42 Axle		O							O	O	O	O								
COLD-CLIMATE PACKAGE	V10	Incls UA1 Battery w/o L19 eng, K05 Block Heater, C42 Heater, Special Insulation and Anti-Freeze Protection to -32 Degrees	N/A C60 Air; N/A B3J Diesel	O	O	O	O	O	O	O	O	O	O	O	O	O	O	O	O	O			
CONSOLE	D55		Reqs Bucket Seats	O	O	O	O	O	O	O	O	O	O	O	O	O	O	O	O	O			
COOLING SYSTEM: Engine Oil	KC4		N/A w/B3J Diesel Eng; Reqs V02 Cooling w/MX0 Trans, Reqs V02 w/MX1 Trans w/L05 or L19 eng; Incl w/Z82 Trailering	O	O	O	O	O	O	O	O	O	O	O	O	O	O	O	O	O			
Radiator, Heavy-Duty	V01		N/A V02 Cooling w/C60 Air Reqs LH6 Diesel and GQ1 or GU6 Axle or LL4 Diesel and GQ1 Axle on C/K1500/2500; w/C/K3500 N/A w/C60, L05, L19 or LL4	O	O	O	O	O	O	O	O	O	O	O	O	O	O	O	O	O			
Radiator and Transmission Oil, Heavy-Duty	V02		Reqs MX0 or MX1 Trans; Incl w. Z82 Trailering	O	O	O	O	O	O	O	O	O	O	O	O	O	O	O	O	O			
DEFOGGER	C49	Rear Window	N/A A28 Window, AJ1 Glass or BYP Sport Pkg; Reqs A01 Glass and YE9 Silverado/SLE or Z62 Scottsdale/SLX	O	O	O	O	O	O	O	O	O	O	O	O	O	O	O	O	O			

OPTION SELECTION

KEY: S STANDARD
O OPTIONAL
— NOT AVAILABLE

- | | | | |
|---------------|----------------|----------------|----------------|
| 1. C10703/E62 | 6. C20903/E63 | 11. K10703/E62 | 16. K20903/E63 |
| 2. C10703/E63 | 7. C20753/E63 | 12. K10703/E63 | 17. K20753/E63 |
| 3. C10903/E63 | 8. C20953/E63 | 13. K10903/E63 | 18. K20953/E63 |
| 4. C10753/E63 | 9. C30903/E63 | 14. K10753/E63 | 19. K30903/E63 |
| 5. C10953/E63 | 10. C30953/E63 | 15. K10953/E63 | 20. K30953/E63 |

OPTION	CODE	DESCRIPTION	RESTRICTIONS	MODELS																			
				2-WHEEL DRIVE (C)										4-WHEEL DRIVE (K)									
				1	2	3	4	5	6	7	8	9	10	11	12	13	14	15	16	17	18	19	20
ENGINES			(See Powerteams)	S	S	S	S	S	S	S	S	S	S	S	S	S	S	S	S	S			
4.3 Liter EFI V6	LB4			O	O	O	O	O	O	O	O	O	O	O	O	O	O	O	O	O			
5.0 Liter EFI V8	L03			O	O	O	O	O	O	O	O	O	O	O	O	O	O	O	O	O			
5.7 Liter EFI V8	L05			O	O	O	O	O	O	O	O	O	O	O	O	O	O	O	O	O			
7.4 Liter EFI V8	L19			O	O	O	O	O	O	O	O	O	O	O	O	O	O	O	O	O			
6.2 Liter Diesel V8	LH6			O	O	O	O	O	O	O	O	O	O	O	O	O	O	O	O	O			
6.2 Liter H.D. Diesel V8	LL4			O	O	O	O	O	O	O	O	O	O	O	O	O	O	O	O	O			
FILLER CAP, FUEL	N05	Locking		O	O	O	O	O	O	O	O	O	O	O	O	O	O	O	O	O			
FLOOR MATS				O	O	O	O	O	O	O	O	O	O	O	O	O	O	O	O	O			
Front only	B32	Removable; Color-keyed	Reqs YE9 Silverado/SLE	O	O	O	O	O	O	O	O	O	O	O	O	O	O	O	O	O			
Rear	B33		Reqs AM7 Seat and B32 Mats- Ext. Cab/Club Coupe Only	O	O	O	O	O	O	O	O	O	O	O	O	O	O	O	O	O			
GAGES	Z53	Voltmeter, Temperature and Oil Pressure; Incl. w/YE9 Silverado/SLE		O	O	O	O	O	O	O	O	O	O	O	O	O	O	O	O	O			
GLASS	A01		Std. on Ext. Cab/Club Coupe	O	O	O	O	O	O	O	O	O	O	O	O	O	O	O	O	O			
Tinted, All Windows	AA3	Includes A20 Swing-Out Quarter Windows	N/A w/AJ1 Deep Tinted Glass- Ext. Cab/Club Coupe only	O	O	O	O	O	O	O	O	O	O	O	O	O	O	O	O	O			
Deep Tinted w/light tinted rear window	AJ1	Includes A20 Swing-Out Quarter Windows	N/A w/A28 Sliding Rear Windows or C49 Defogger; Ext. Cab/Club Coupe only	O	O	O	O	O	O	O	O	O	O	O	O	O	O	O	O	O			
Deep Tinted				O	O	O	O	O	O	O	O	O	O	O	O	O	O	O	O	O			
HARNES, WIRING	UY7	Trailer, Heavy-Duty 7-Lead; Incl. w/Z82 Trailering		O	O	O	O	O	O	O	O	O	O	O	O	O	O	O	O	O			
HEADLAMPS	TT4	Halogen	Incl w/V22 Appearance or YE9 Silverado/SLE	O	O	O	O	O	O	O	O	O	O	O	O	O	O	O	O	O			
HEATER	K05	Incl w/V10 Cold-Climate	N/A w/B3J Diesel Pkg; Incl w/LH6/LL4	O	O	O	O	O	O	O	O	O	O	O	O	O	O	O	O	O			
Engine Block	C42	Incl w/V10 Cold-Climate	N/A w/C60 Air	O	O	O	O	O	O	O	O	O	O	O	O	O	O	O	O	O			
Front, Heavy-Duty				O	O	O	O	O	O	O	O	O	O	O	O	O	O	O	O	O			
LAMPS	UF2			O	O	O	O	O	O	O	O	O	O	O	O	O	O	O	O	O			
Cargo Area	C95	Incl w/TR9 Lighting		O	O	O	O	O	O	O	O	O	O	O	O	O	O	O	O	O			
Dome and Reading	U01	Incl w/R05 Wheels	STD on C/K3500 w/B3J; N/A w/YF5 Cal Emissions	O	O	O	O	O	O	O	O	O	O	O	O	O	O	O	O	O			
Roof Marker				O	O	O	O	O	O	O	O	O	O	O	O	O	O	O	O	O			
LICENSE PLATE BRACKET	VK3	Front		O	O	O	O	O	O	O	O	O	O	O	O	O	O	O	O	O			
LIGHTER, CIGARETTE	U37	Incl w/YE9 Silverado/SLE		O	O	O	O	O	O	O	O	O	O	O	O	O	O	O	O	O			
LIGHTING, AUXILIARY	TR9	Incl C95 Dome and Reading Lamp; courtesy, ashtray, glove box and underhood lamps; headlamp warning buzzer and R.H. door jamb switch		O	O	O	O	O	O	O	O	O	O	O	O	O	O	O	O	O			
MIRRORS, EXTERIOR (LH/RH)	D44	Painted Black, 9" x 6.5"		O	O	O	O	O	O	O	O	O	O	O	O	O	O	O	O	O			
Below-Eye-Line Type	D45	Stainless Steel, 9" x 6.5"	N/A w/BYP Spt	O	O	O	O	O	O	O	O	O	O	O	O	O	O	O	O	O			
Below-Eye-Line Type	DF2	Stainless Steel; Incl w/Z81 Camper; 7.5" x 10.5"	N/A w/BYP Spt	O	O	O	O	O	O	O	O	O	O	O	O	O	O	O	O	O			
Camper Type				O	O	O	O	O	O	O	O	O	O	O	O	O	O	O	O	O			
MOLDINGS:	B84	Black; Incl w/Z62 Scottsdale/SLX w/o BYP Sport Pkg or BYQ Graphic	N/A w/BYP or BYQ Sport Pkg. N/A w/YE9 Silverado/SLE or B85 Moldings; N/A R05 Wheels	O	O	O	O	O	O	O	O	O	O	O	O	O	O	O	O	O			
Body Side				O	O	O	O	O	O	O	O	O	O	O	O	O	O	O	O	O			

OPTION SELECTION

BY STANDARD
 O OPTIONAL
 — NOT AVAILABLE

- | | | | |
|---------------|----------------|----------------|----------------|
| 1. C10703/E62 | 6. C20903/E63 | 11. K10703/E62 | 16. K20903/E63 |
| 2. C10703/E63 | 7. C20753/E63 | 12. K10703/E63 | 17. K20753/E63 |
| 3. C10903/E63 | 8. C20953/E63 | 13. K10903/E63 | 18. K20953/E63 |
| 4. C10753/E63 | 9. C30903/E63 | 14. K10753/E63 | 19. K30903/E63 |
| 5. C10953/E63 | 10. C30953/E63 | 15. K10953/E63 | 20. K30953/E63 |

MODELS																			
2-WHEEL DRIVE (C)										4-WHEEL DRIVE (K)									
1	2	3	4	5	6	7	8	9	10	11	12	13	14	15	16	17	18	19	20

OPTION	CODE	DESCRIPTION	RESTRICTIONS	1	2	3	4	5	6	7	8	9	10	11	12	13	14	15	16	17	18	19	20
MOLDINGS: (Cont) Body Side	B85	Bright; Incl w/YE9 Silverado/SLE w/o BYP Sport Pkg or BYQ Graphics	N/A w/B84 Mldgs or Std Decor; w/E63 body, reqs B96 Mldgs; N/A R05 Wheels	O	O	O	O	O	O	O	O	O	O	O	O	O	O	O	O	O	O	O	O
Wheel Opening	B74	Black; Incl w/Z62 Scottsdale/SLX w/o BYP Sport Pkg or BYQ Graphics	N/A w/YE9 Silverado/SLE or E62 Body; Req's B84 Mldgs; N/A w/R05 Dual Rear Wheels; N/A K20903 or K20953 w/C6P	O	O	O	O	O	O	O	O	O	O	O	O	O	O	O	O	O	O	O	O
Wheel Opening	B96	Bright; Incl w/YE9 Silverado/SLE w/o BYP Sport Pkg or BYQ Graphics	N/A w/E62 Body, B74 Mldgs or Std. Decor; w/E63 Body, reqs B85 Mldgs; N/A R05 Dual Rear Wheels; N/A K20903 or K20953 w/C6P	O	O	O	O	O	O	O	O	O	O	O	O	O	O	O	O	O	O	O	O
OFF-ROAD CHASSIS PACKAGE	Z71	Incls F59 Stabilizer, Bilstein Shocks and NZZ Skid Plate	Req's XGL or XGM Tires; N/A Ext Cab; N/A F60 Springs												O	O	O						
OPERATING CONVENIENCE PACKAGE	ZQ2	Incls Power Door Locks and Power Windows		O	O	O	O	O	O	O	O	O	O	O	O	O	O	O	O	O	O	O	O
PAINT, EXTERIOR Solid	ZY1		(See Color and Trim)	S	S	S	S	S	S	S	S	S	S	S	S	S	S	S	S	S	S	S	S
Conventional Two-Tone	ZY2			O	O	O	O	O	O	O	O	O	O	O	O	O	O	O	O	O	O	O	O
Special Two-Tone	ZY3			O	O	O	O	O	O	O	O	O	O	O	O	O	O	O	O	O	O	O	O
Deluxe Two-Tone	ZY4			O	O	O	O	O	O	O	O	O	O	O	O	O	O	O	O	O	O	O	O
RADIO EQUIPMENT AM Radio	U63	5 Presets, 2 4" x 6" Front Speakers, 4.6 Watts Total Power Output		O	O	O	O	O	O	O	O	O	O	O	O	O	O	O	O	O	O	O	O
Electronically Tuned AM/FM Stereo Radio w/Seek-Scan	UK4	12 Presets, Digital Display, 2 4" x 6" ERS Front Speakers, 13.5 Watts Total Power Output		O	O	O	O	O	O	O	O	O	O	O	O	O	O	O	O	O	O	O	O
Electronically Tuned AM/FM Stereo Radio w/Seek-Scan and Digital Clock	UM7	12 Presets, Digital Display, 2 Front/2 Rear 4" x 6" ERS Speakers, 26 Watts Total Power Output		O	O	O	O	O	O	O	O	O	O	O	O	O	O	O	O	O	O	O	O
Electronically Tuned AM/FM Stereo Radio w/Seek-Scan and Stereo Cassette Tape	UK5	12 Presets, Digital Display, 2 4" x 6" ERS Front Speakers, 13.5 Watts Total Power Output		O	O	O	O	O	O	O	O	O	O	O	O	O	O	O	O	O	O	O	O
Electronically Tuned AM/FM Stereo Radio w/Seek-Scan, Stereo Cassette Tape and Digital Clock	UM6	12 Presets, Digital Display, 12 Front/2 Rear 4" x 6" ERS Speakers, 26 Watts Total Power Output		O	O	O	O	O	O	O	O	O	O	O	O	O	O	O	O	O	O	O	O
Electronically Tuned AM Stereo/FM Stereo Radio w/Seek-Scan, Stereo Cassette Tape w/Search-Repeat, Graphic Equalizer and Digital Clock	UX1	12 Presets, Digital Display, 2 Front/2 Rear ERS Speakers, 26 Watts Total Power Output		O	O	O	O	O	O	O	O	O	O	O	O	O	O	O	O	O	O	O	O
Fixed Mast Antenna	U73	Incl w/U63, UK4, UM7, UK5, UM6 or UX1 Radio		O	O	O	O	O	O	O	O	O	O	O	O	O	O	O	O	O	O	O	O
SCOTTSDALE/SLX	Z62		(See Trim Level Section)	O	O	O	O	O	O	O	O	O	O	O	O	O	O	O	O	O	O	O	O
SHOCK ABSORBERS Front and Rear, Heavy Duty	F51	Incl w/Z82 Trailing	C/K 1500 only; N/A Z71 Off-Road Chassis	O	O	O	O	O							O	O	O	O					
SILVERADO/SLE (see Trim Level Section)	YE9			O	O	O	O	O	O	O	O	O	O	O	O	O	O	O	O	O	O	O	O

OPTION SELECTION

KEY: S STANDARD
 O OPTIONAL
 — NOT AVAILABLE

- | | | | |
|---------------|----------------|----------------|----------------|
| 1. C10703/E62 | 6. C20903/E63 | 11. K10703/E62 | 16. K20903/E63 |
| 2. C10703/E63 | 7. C20753/E63 | 12. K10703/E63 | 17. K20753/E63 |
| 3. C10903/E63 | 8. C20953/E63 | 13. K10903/E63 | 18. K20953/E63 |
| 4. C10753/E63 | 9. C30903/E63 | 14. K10753/E63 | 19. K30903/E63 |
| 5. C10953/E63 | 10. C30953/E63 | 15. K10953/E63 | 20. K30953/E63 |

OPTION	CODE	DESCRIPTION	RESTRICTIONS	MODELS																																				
				2-WHEEL DRIVE (C)										4-WHEEL DRIVE (K)																										
				1	2	3	4	5	6	7	8	9	10	11	12	13	14	15	16	17	18	19	20																	
SKID PLATE	NZZ	Off-Road; Incl w/Z71 Off Road Pkg.	K1500 only																		O	O	O	O	O	O	O	O	O	O	O	O	O	O	O	O	O	O	O	O
SPEED CONTROL, ELECTRONIC	K34			O	O	O	O	O	O	O	O	O	O	O	O	O	O	O	O	O	O	O	O	O	O	O	O	O	O	O	O	O	O	O	O	O	O	O	O	
SPORT EQUIPMENT PACKAGE	BYP	Incls Up-level Black Grille. Quad Headlamps (Halogen), Body Color Front Bumper, Body Color Rear Bumper with Rub Strip and Step Pad. Black Mirrors and Sport Identification Decals. 2WD Models also include Fog Lamps, Special Body Side Moldings, Chrome-plated 15" Wheels and a 15" x 7" Steel Spare. 4WD Models also include Black Wheel Flares and Towhooks.	Avail w/C/K10703 only; N/A w/B84, B85, B74 or B96 Mldgs. D45 or DF2 Mirrors, VG3 or V27 Bumpers or D85 Striping; Reqs E63 Body, Z71 Solid Paint Application and V22 Grille; Avail only w/Red (74), White (50), or Black (18) Paint; On C10703: N/A w/C49 Defogger, N67, PA6 or P01 Wheel trim or V76 Tow Hooks; Also Reqs VT5 Bumper and XFL, ZFL, YFL Tires; On K10703: Also N/A w/BYQ 4x4 Sport Graphics; Reqs XGL, ZGL, YGL Tires. V43 Bumper and V76 Tow Hooks; w/LB4 or L03 Engine Reqs GT4 Axle.																		O																			
SPORT GRAPHICS, 4X4	BYQ		N/A w/B74, B84, B85 or B96 Mldgs or D85 Striping; N/A w/K10703 BYP Sport Equip; Reqs ZY1 Solid or ZY3 Spec Two-Tone Paint Applications; On K1500, reqs E63 Body; N/A R05 Wheels																																					
SPRINGS (TORSION BARS)	F60	Front, Heavy-Duty	N/A w/Diesel Engine; N/A w/Z71 Off-Road Chassis Pkg; On K1500 Series reqs F44 H.D. Chassis; Recommended w/Front-Mounted Accessories																																					
STABILIZER BAR	F59	Front, Incl w/Z71 Off-Road Pkg; Incl w/Z81 Camper		O	O	O	O	O	O	O	O	O	O	O	O	O	O	O	O	O	O	O	O	O	O	O	O	O	O	O	O	O	O	O	O	O	O	O	O	
STEERING WHEELS				O	O	O	O	O	O	O	O	O	O	O	O	O	O	O	O	O	O	O	O	O	O	O	O	O	O	O	O	O	O	O	O	O	O	O	O	
Comfortilt	N33			O	O	O	O	O	O	O	O	O	O	O	O	O	O	O	O	O	O	O	O	O	O	O	O	O	O	O	O	O	O	O	O	O	O	O	O	
Custom	N31	Incl w/YE9 Silverado/SLE		O	O	O	O	O	O	O	O	O	O	O	O	O	O	O	O	O	O	O	O	O	O	O	O	O	O	O	O	O	O	O	O	O	O	O	O	
Sport	NK3		Reqs YE9 Silverado/SLE	O	O	O	O	O	O	O	O	O	O	O	O	O	O	O	O	O	O	O	O	O	O	O	O	O	O	O	O	O	O	O	O	O	O	O	O	
STRIPING (See Color and Trim)	D85		Reqs ZY1 or ZY2 Paint; N/A w/BYQ Sport Graphics	O	O	O	O	O	O	O	O	O	O	O	O	O	O	O	O	O	O	O	O	O	O	O	O	O	O	O	O	O	O	O	O	O	O	O	O	O
TANK, FUEL	NJ8	Approx. 34-gal Total Vehicle Capacity; Incl w/Z81 Camper	N/A C/K10703 C/K10753 C/K20753																																					
TOWING DEVICE	V76	Two Front Towing Hooks	C10703; N/A w/BYP Sport Pkg	O	O	O	O	O	O	O	O	O	O	O	O	O	O	O	O	O	O	O	O	O	O	O	O	O	O	O	O	O	O	O	O	O	O	O	O	O
TRAILER HITCH	VR4	Weight Distributing Platform Type; Incl w/Z82 Trailing	Reqs V43 Painted Bumper or VB3 Rear Step Chrome Bumper; N/A MM5 Trans																																					

OPTION SELECTION

KEY: S STANDARD
 O OPTIONAL
 — NOT AVAILABLE

- | | | | |
|---------------|----------------|----------------|----------------|
| 1. C10703/E62 | 6. C20903/E63 | 11. K10703/E62 | 16. K20903/E63 |
| 2. C10703/E63 | 7. C20753/E63 | 12. K10703/E63 | 17. K20753/E63 |
| 3. C10903/E63 | 8. C20953/E63 | 13. K10903/E63 | 18. K20953/E63 |
| 4. C10753/E63 | 9. C30903/E63 | 14. K10753/E63 | 19. K30903/E63 |
| 5. C10953/E63 | 10. C30853/E63 | 15. K10953/E63 | 20. K30953/E63 |

OPTION	CODE	DESCRIPTION	RESTRICTIONS	MODELS																			
				2-WHEEL DRIVE (C)										4-WHEEL DRIVE (K)									
				1	2	3	4	5	6	7	8	9	10	11	12	13	14	15	16	17	18	19	20
TRAILERING SPECIAL EQUIPMENT HEAVY-DUTY	Z82	Incls UY7 Wiring, VR4 Hitch, V02 Trans Oil Cooler and F51 Shocks, w/o B3J Diesel; Equip. Incls. KC4 Cooler	2.73 Rear Axle; w/LB4 Engine N/A 3.08 Rear Axle; Reqs VB3 or V43 Bumpers and MX0 or MX1 Trans; N/A Z71 Off-Road Pkg.																				
TRANSMISSIONS			(See Powerteams)																				
	MM4	4-Speed Manual																					
	MM5	5-Speed Manual w/Overdrive		S	S	S	S	S	S	S	S	S	S	S	S	S	S	S	S	S			
	MX0	4-Speed Automatic w/Overdrive																					
	MX1	3-Speed Automatic																					
WHEEL TRIM																							
Wheel Covers	P01		N/A w/BYP Sport Pkg; N/A w/R05 Wheels	O	O	O	O	O	O	O	O	O	O	O	O	O	O	O	O	O			
Trim Rings	P06		Reqs R05 Dual Rear Wheels																				
WHEELS																							
Aluminum, 15" x 7"	N90	Incl w/BYP Sport Pkg	C1500 Only	O	O	O	O																
Aluminum, 16" x 7"	PF4	Incl w/BYP Sport Pkg	K1500 Only; N/A F44 H.D. Chassis																				
Rally	N67	Incls Special Hub Covers and Trim Rings	N/A BYP Sport Pkg, N/A R05	O	O	O	O	O	O	O	O	O	O	O	O	O	O	O	O	O			
Styled	PA6	Incls Special Hub Covers	N/A w/BYP Sport Pkg, C1500 Only	O	O	O	O																
WHEELS																							
Dual Rear	R05		N/A BYQ Sport Graphics; w/MX1 Trans Reqs V02 Cooler; Incls U01 Lamps; 3500 Series Only																				
WINDOWS																							
Sliding Rear	A28		N/A w/AJ1 Tinted Glass or C49 Defogger	O	O	O	O	O	O	O	O	O	O	O	O	O	O	O	O	O			
Swing-Out Quarter	A20	Incl w/AJ1 or AA3 Tinted Glass	Ext Cabs only																				
WINDSHIELD WIPER SYSTEM																							
	CD4	Intermittent		O	O	O	O	O	O	O	O	O	O	O	O	O	O	O	O	O			