

Little Motor Car Co.
Flint, Mich.

Form 445-13-P. P. Co. 5928

FRONT AND REAR AXLE INFORMATION
CUSTOMERS' MODEL NUMBER **Little Four.**

JUN 15 1912

Front Axle

Model or I-Beam Number **436-L**
Track **56"**
Tubular or I-Beam **Tubular.**
Wall of Tubing or I-Beam Section **2" x 1/4 wall**
C. L. Spindle to top Spring Seat **1-5/8**
Drop Top Spring Seat to Top I-Beam **2-7/8**
C. C. Spring Seats **26-1/2**
Width Springs **15/32" Center Hole 21/32 diam.**
Clip Holes **1-1/2**
Tie Rod in Front or Rear **Rear 17/16 deep**

Rear Axle

The Rod Straight or Dropped **Dropped.**
Ball on R or L Side **Left.**
Ball Over or Under Axle **On Tie Rod.**
Size of Ball **1-1/8**
Type of Front Hub **W-M Co. Cup & Cone.**
Size of Spokes **1-1/4**
Number of Spokes **12**
Number of Spoke Bolts **6**
Steering Movement Angle **35 deg.**

Rear Axle

Model Number **470-1**
Track **56"**
Ratio of Gears **4 to 1**
C. C. Spring Seats **24-1/2"**
Width of Springs **1-1/2"**
Clip Holes **19/32 Center Hole 21/32 diam. 7/16 deep**
C. C. Radius Rod Lugs **None**
Size of Internal Brakes **10**
Size of External Brakes **10**
Size of Double Internal Brakes **None**
Brake Levers Inside or Outside Spring Seat **Inside**
C. L. Axle to C. L. Internal Brake Lever **10-3/16 10-3/16**
C. L. Axle to C. L. External Brake Lever **11-15/16 11-15/16**

Drilling of Int. Br. Levers for Clevis Pin **3/8**
Drilling of Ext. Br. Levers for Clevis Pin **3/8"**
Milling of Int. Br. Levers for Clevis Pin **3/8"**
Milling of Ext. Br. Levers for Clevis Pins **3/8"**
C. L. Axle to Extreme End of P. Shaft **46-6/8"**
Size and Length of P. Shaft Square Extension **4.16 long 1" Sq. 1-1/4 corners.**
One or Two Universal Joints **1**
Size of Spokes **1-1/4"**
Number of Spokes **12**
Number of Spoke Bolts **6**
Any Spokes Embossed **No**
If Single Brg. Hub Type of Axle, Type of Hub to be used **Fixed Type**

Hubs and Drums to be Shipped to Wheel Maker or Customer.....

Weston-Mott Company, Flint, Michigan
Spec. No. 35896 - Rear
35897 - Front

ALG -- 6-14-12.



.

.



July 2d, 1913

Little Motor Car Co. Order Nos. 11083 - 11082
Sheldon Order No. 28695

Front Spring Semi Elliptic. Royal Mail Baby Grand

1 3/4 x 6 x 36 at 2 1/2 out
Steel 2-3-3-4-4-4 Dragon
Free height 4 1/4" outside
Center bolt 5/16" - 1" off center - 9/16" eyes
true sweep shape - saw and bead - clip 3d regular
short plate 15 1/2" - 7/16" off center
Test at 2 1/2" outside 475# 320# per inch

Rear Spring 3/4 Elliptic. Baby Grand

1 3/4 x 6/7 x 48 at 9" in to out
Scroll Member
Steel 1-2-2-2-3-3 Dragon
Free height 12" outside
Travel 1 9/16" - length 19 1/8" plus 3 1/8"
1/2" eyes - saw and bead - clip 3d regular
2" links - oil cup bolts 1/4-32 6 1/4" flat top

Bottom Member

Steel 1-2-2-2-3-3-3 Dragon
Free height 6" outside
Travel 3 3/16" 1/2" eyes rear end 9/16" eyes front end
center bolt 5/16" 3" off center.
saw and bead clip 3d rear end - clip 2d and 4th front end
short plate 19" - 1 3/16" off center
Test at 9" in to out 675# 160# per inch

Rear Spring 3/4 Elliptic Royal Mail

1 3/4 x 5/6 x 48 at 9" in to out

Scroll Member

Steel 2-3-3-4-4- Dragon
Free height 11 3/4" outside
Travel 1 3/4" length 20" plus 3" - 1/2" eyes
saw and bead - clip 3d regular - 2" links - oil cup
bolts 1/4-32 6" flat top

Bottom Member

Steel 2-3-3-4-4-4 Dragon
Free height 6" outside
Travel 3 3/16" - eyes 1/2" rearend - 9/16" front end-
center bolt 5/16" - 3" off center - saw and bead-
clip 3d rear end - clip 2d and 4th front end - short plate
20 3/4" - 1 5/16" off center - no drop
Test at 9" in to out 450# 103# per inch



.

.



SPECIFICATIONS

TYPE "C" CHEVROLET '40"

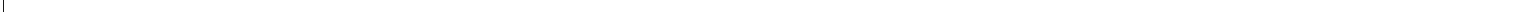
WHEEL BASE	120-inch.	TRANSMISSION	Selective type, three speeds forward and reverse. Center control.
TREAD	56-inch.	COOLING	Special designed radiator, centrifugal pump and belt-driven fan.
MOTOR	Six-cylinder, "F" head, 3 ⁵ / ₁₆ -inch bore, 5-inch stroke. Three point suspension.	FRONT AXLE	Drop forged "F" beam.
CYLINDERS	Cast in blocks of three.	REAR AXLE	Drop forged "F" beam.
CONNECTING RODS	Drop forged "F" beam section. Die cast babbit bearings.	BRAKES	Rear axle brakes, both foot pedal and emergency internal expanding in 16-inch drum; lined with Kaybestos and fully protected from dirt.
CRANK SHAFT	Drop forging. Conceded by experts to be a wonderful piece of work. Counterweights forged integral with shafts and carefully tested and balanced before assembling. Is unique in that there is practically no vibration when motor is running at 2000 revolutions a minute.	WHEELS	35x4 1/2. Artillery type with demountable rims. Spokes 1 3/4-inch. 10 in front and 12 in rear. All bolts on hub flanges covered by shields.
CRANK SHAFT BEARINGS	Die cast babbit.	FRAME	Pressed steel.
CAM SHAFTS	Drop forged integral.	SPRINGS	Semi-elliptic in front—1/4 platform in rear.
CAM SHAFT BEARINGS	Die cast babbit.	GASOLINE TANK	Gasoline tank holding 20 gallons and auxiliary oil tank holding two gallons located under front seat.
TIMING GEARS	Helical type.	STEERING GEAR	Worm and gear type. Left-hand drive.
LUBRICATION	Automatic mechanical oiling system.	EQUIPMENT	Fully equipped with tailored top and boot, ventilating windshield, speedometer with electric light. Self-starter, demountable rims, tire holders on rear (no straps), electric lights, gasoline capacity gauge, etc.
CARBURETOR	Special for Chevrolet Motor—exhaust heated and automatic. Controlled from steering post and by foot accelerator.	PRICE	F. O. B. Detroit, Michigan, \$2100.
IGNITION	Dual system.		
LIGHTING	Generator system for all lamps, including dash attachments.		
CATCH COILS	18-inch diameter. Leather faced with adjustable compensating springs.		

"The Product of Experience"



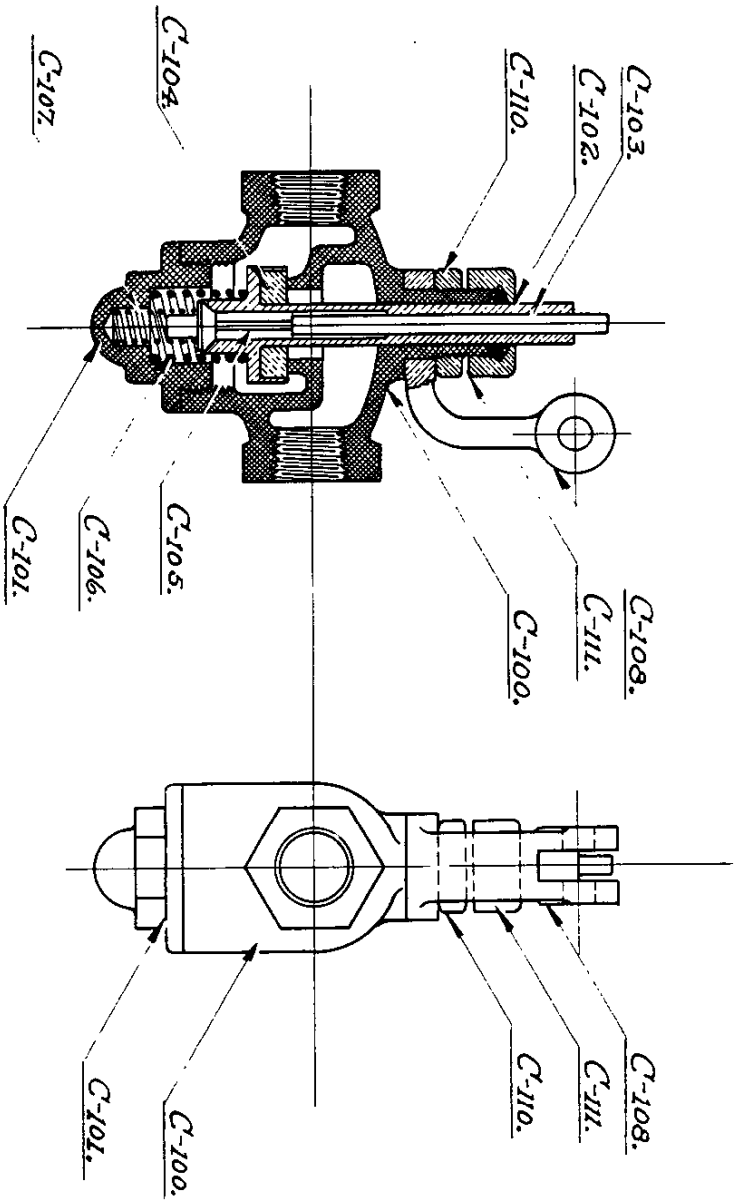
.

.



CHEVROLET-40-1913

AUTOMATIC AIR VALVE



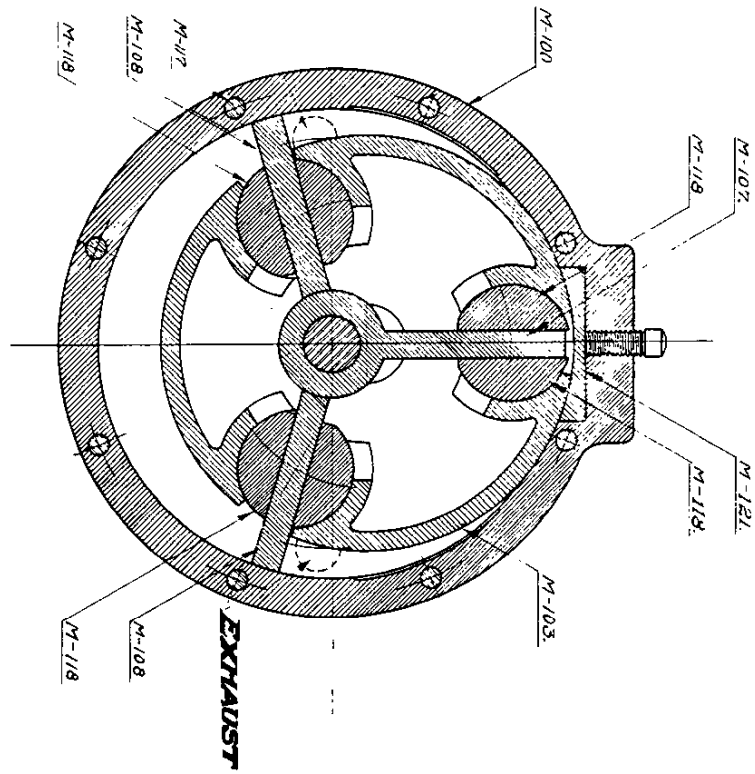
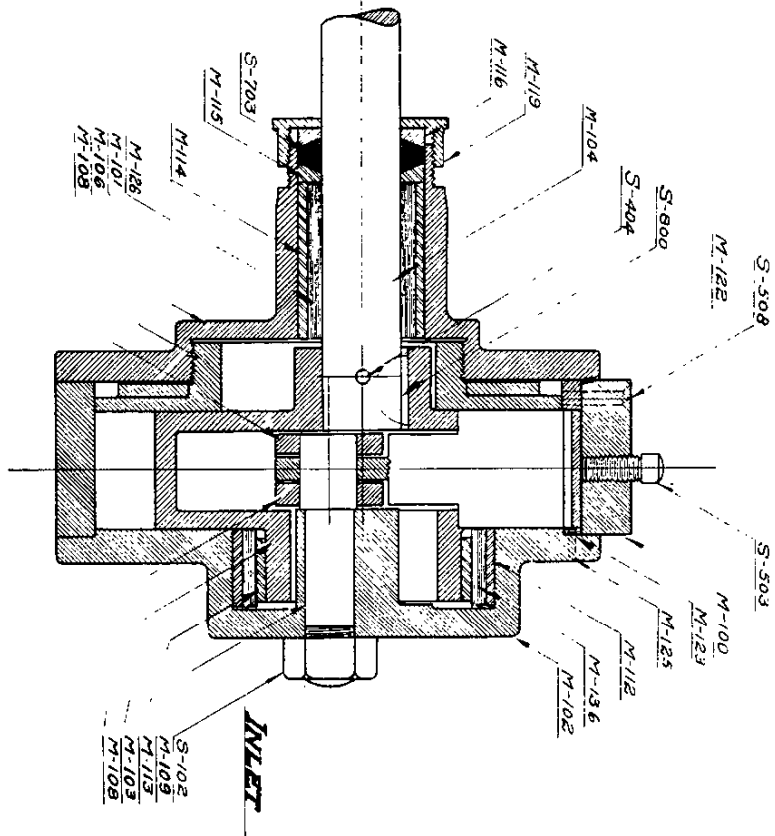
.

.

.....

CHEVROLET 4-0-1913.

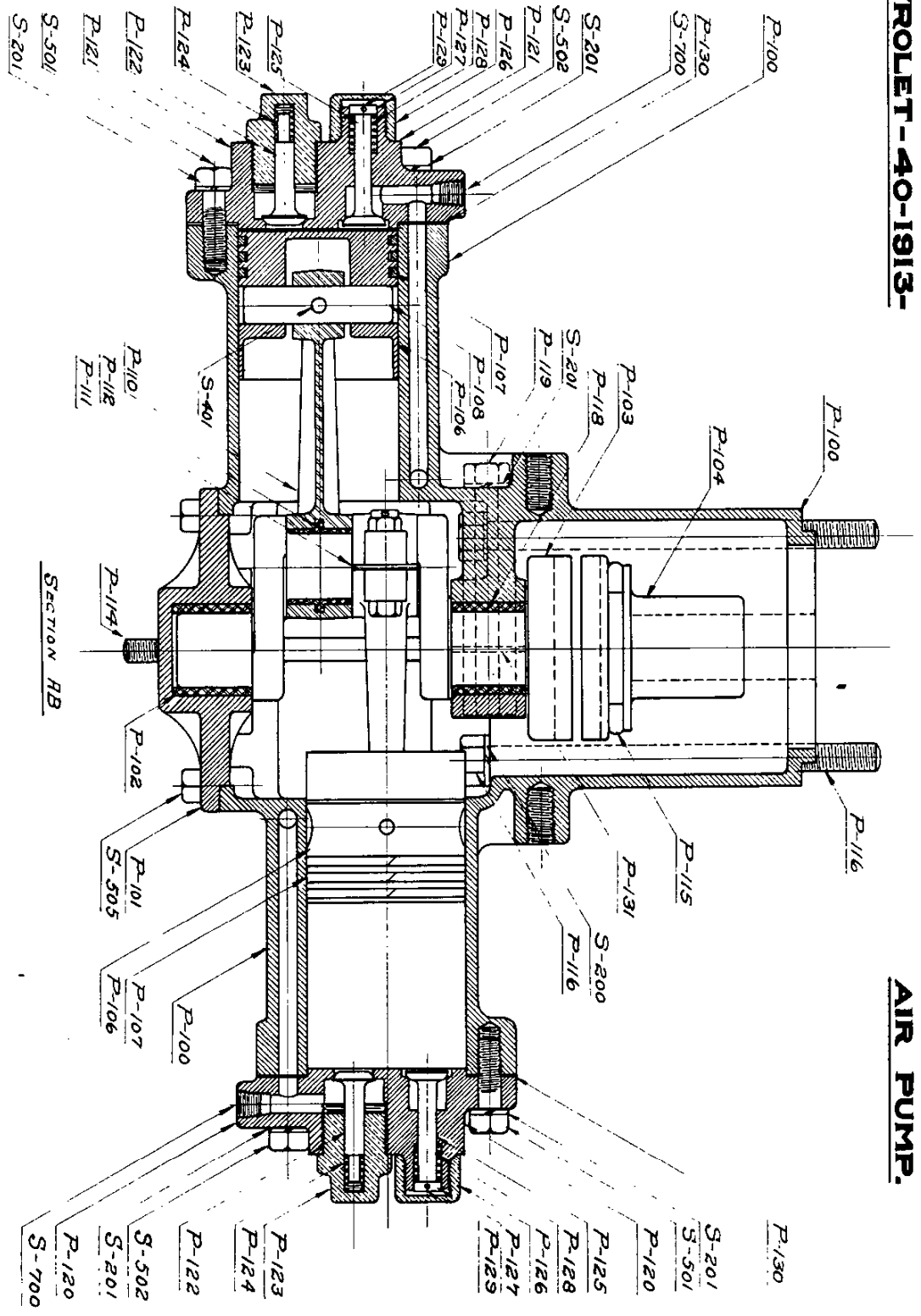
ROTARY AIR MOTOR.





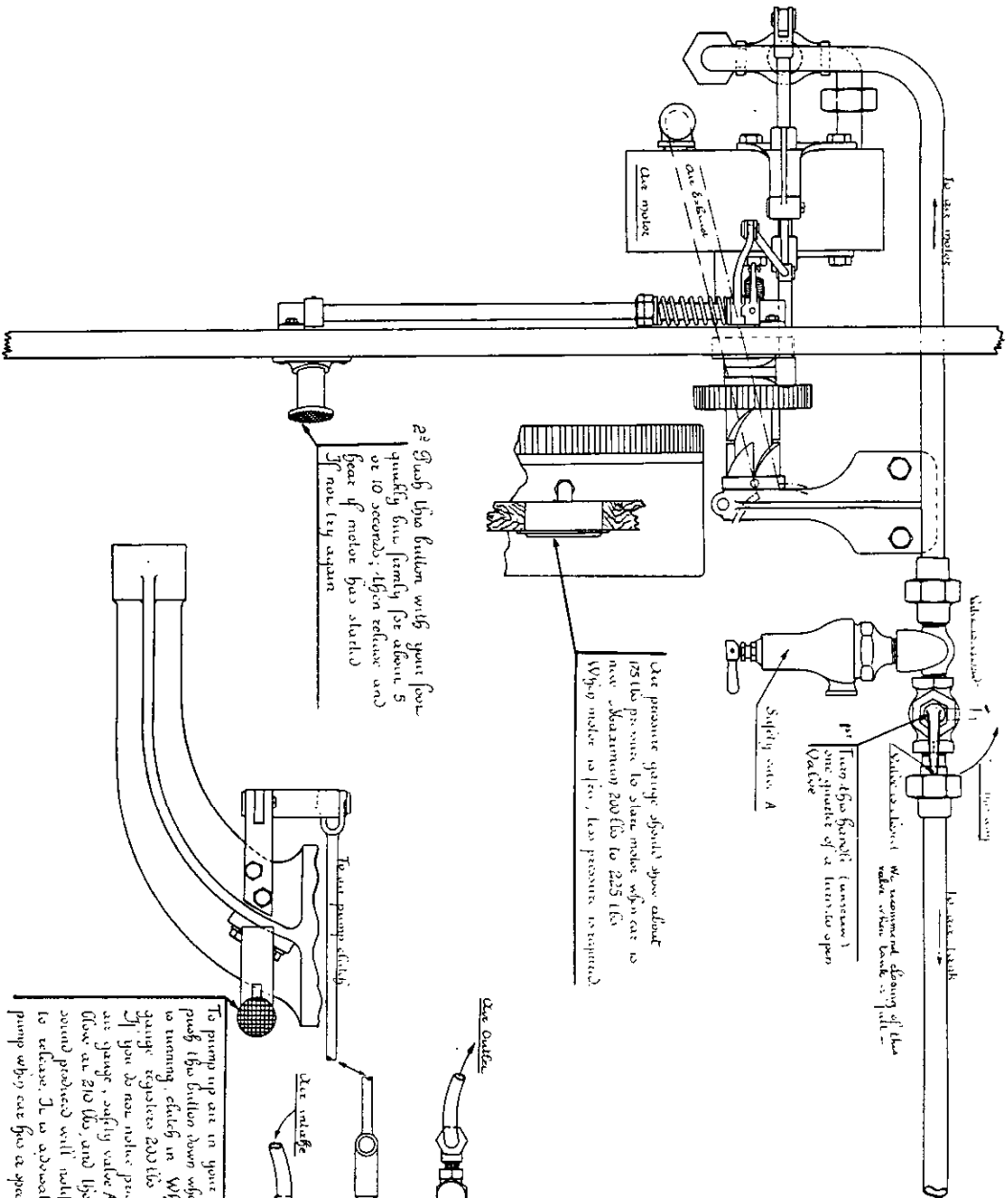
CHEVROLET - 40-1913-

AIR PUMP.





CHEVROLET-40-1913 Self-Starter



NOTE: Before making further adjustments, see the section on the battery side.

Use pressure gauge against your about 25 lbs pressure to start motor when car is new. Maximum 200 lbs to 225 lbs. When motor is first, less pressure is required.

2nd Push this button with your foot quickly but firmly for about 5 or 10 seconds; (light reflex and gear of motor has started)

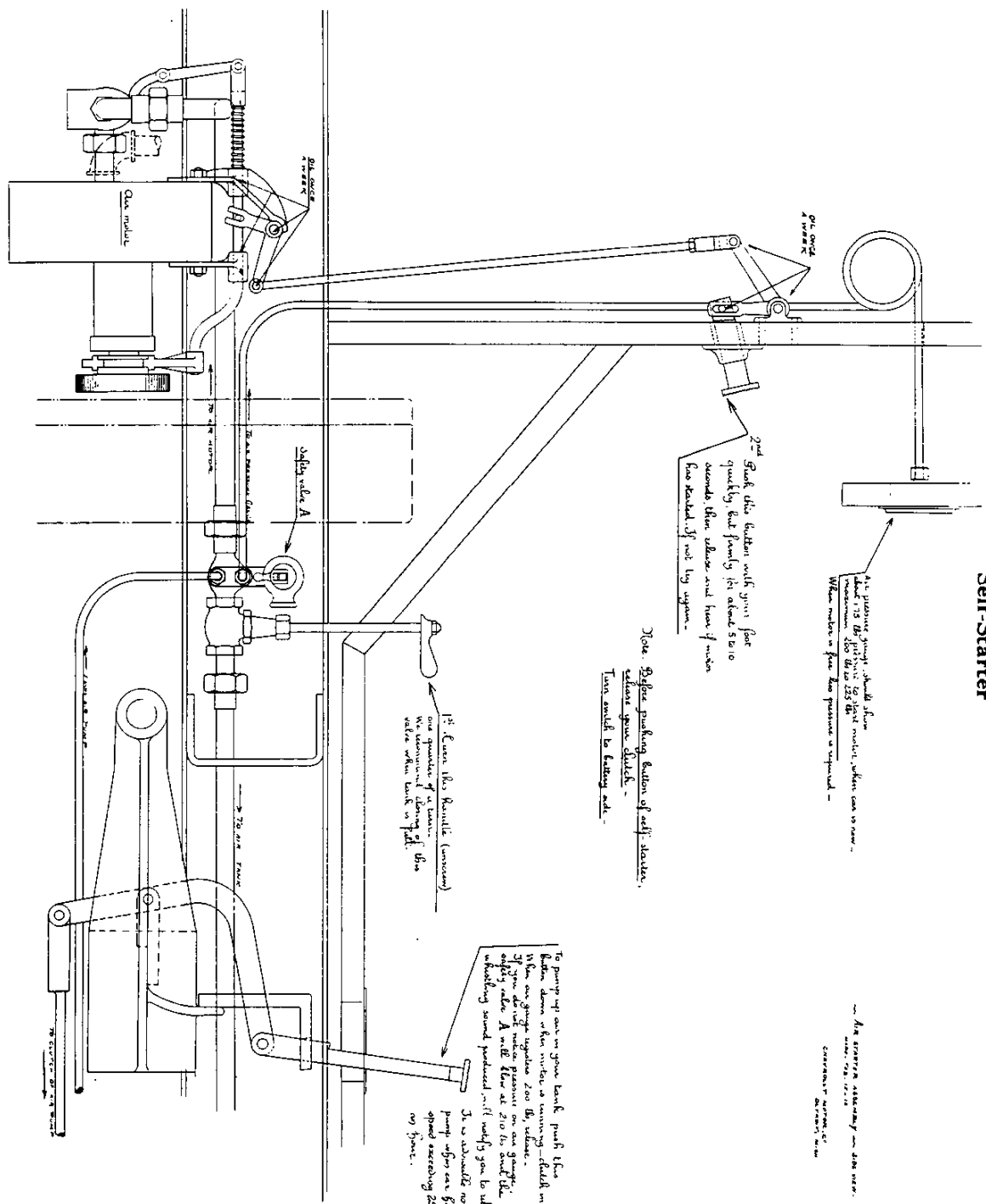
To pump up air in your tank, push this button down when motor is running, stop it when air gauge registers 200 lbs release. If you do not notice pressure on air gauge, safety valve A will blow at 210 lbs, and by whistling sound produced will notify you to release. It is advisable not to run pump when car has a speed exceeding 25 miles per hour.

This pump is lubricated from your transmission. Use only the best grade 60W steam cylinder oil.



CHEVROLET-40-1913

Self-Starter



As pressure pump, it will operate at 175 lbs. pressure to start motor, when car is new - maximum 200 lbs. to 225 lbs. When motor is four two pressure is required -

See starter assembly on this motor. See also page 10.

2nd - Soak the cushion with grease for quickly but firmly in about 5 to 10 seconds then release and have it make few strokes if not by system.

Note - Before packing button of self-starter, release your clutch - Turn switch to battery side.

1 1/2" Curves this handle (convenient) for operation of solenoid - see valve within tank in field this

To pump up air in your tank push this button down in this motor a running field in - If you see gauge register 200 lbs. when safety valve A will blow at 210 lbs. and the building sound produced will notify you to release - It is advisable not to run pump after car has started increasing 25 miles per hour.

CHEVROLET MOTOR CO. DETROIT, MICH.



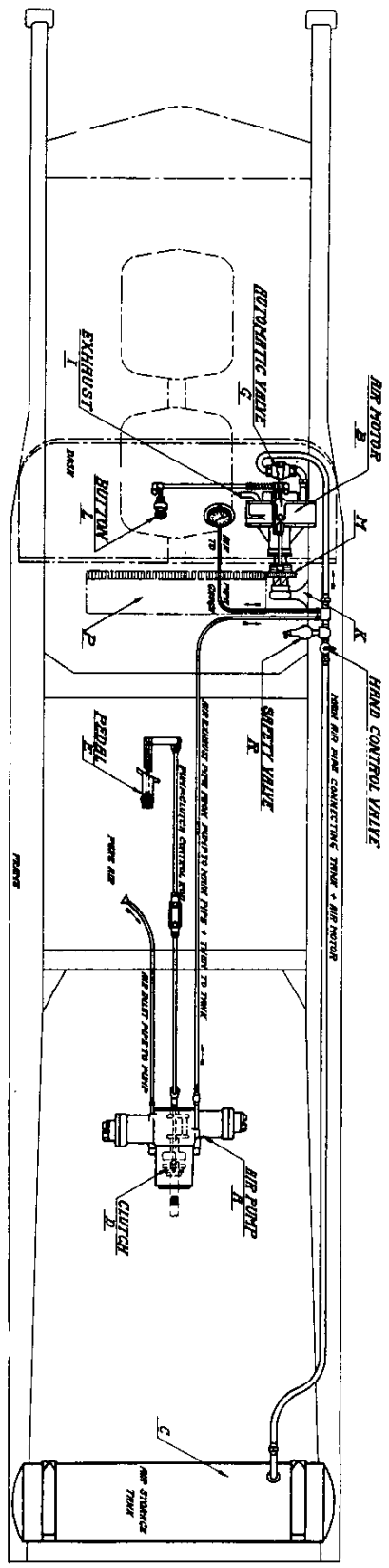
4

7



Self-Starting Assembly Plan View

CHEVROLET "40" AIR STARTING MECHANISM



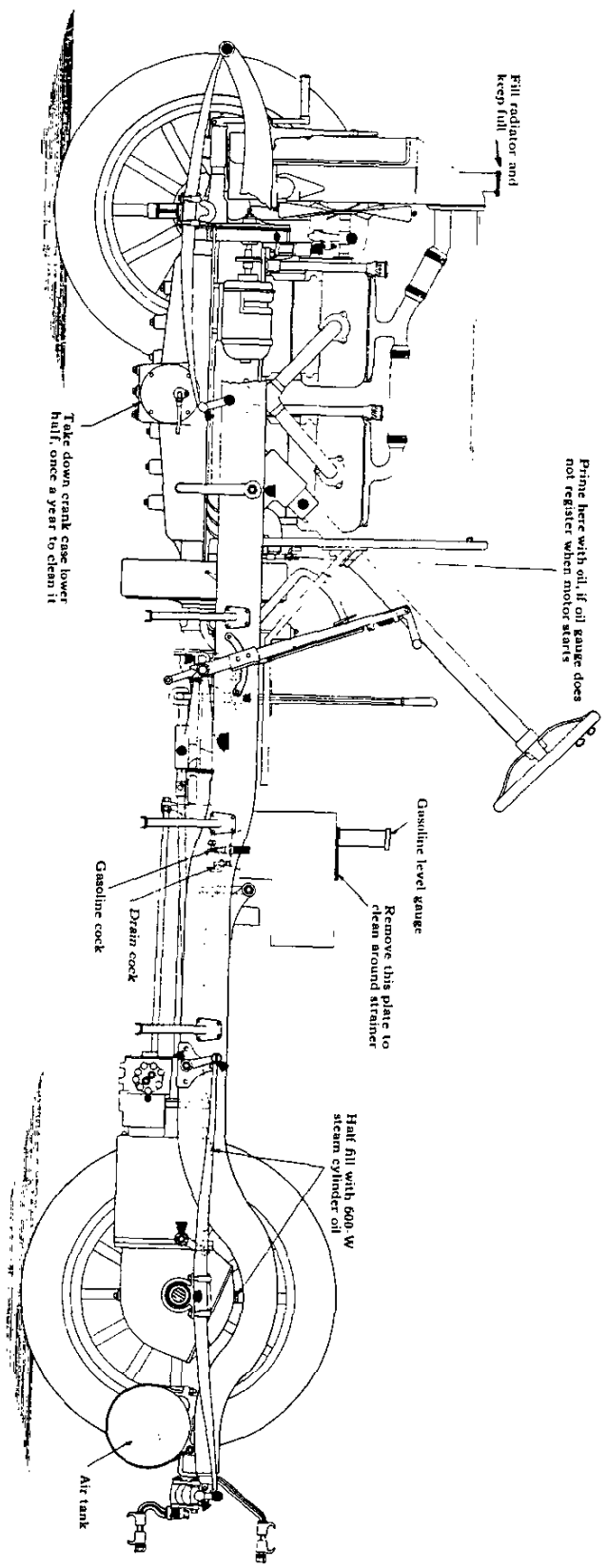


1

2



CHEVROLET-40-1913 Lubrication Chart



Fill radiator and keep full

Prime here with oil, if oil gauge does not register when motor starts

Take down crank case lower half, once a year to clean it

Gasoline level gauge

Remove this plate to clean around strainer

Drain cock

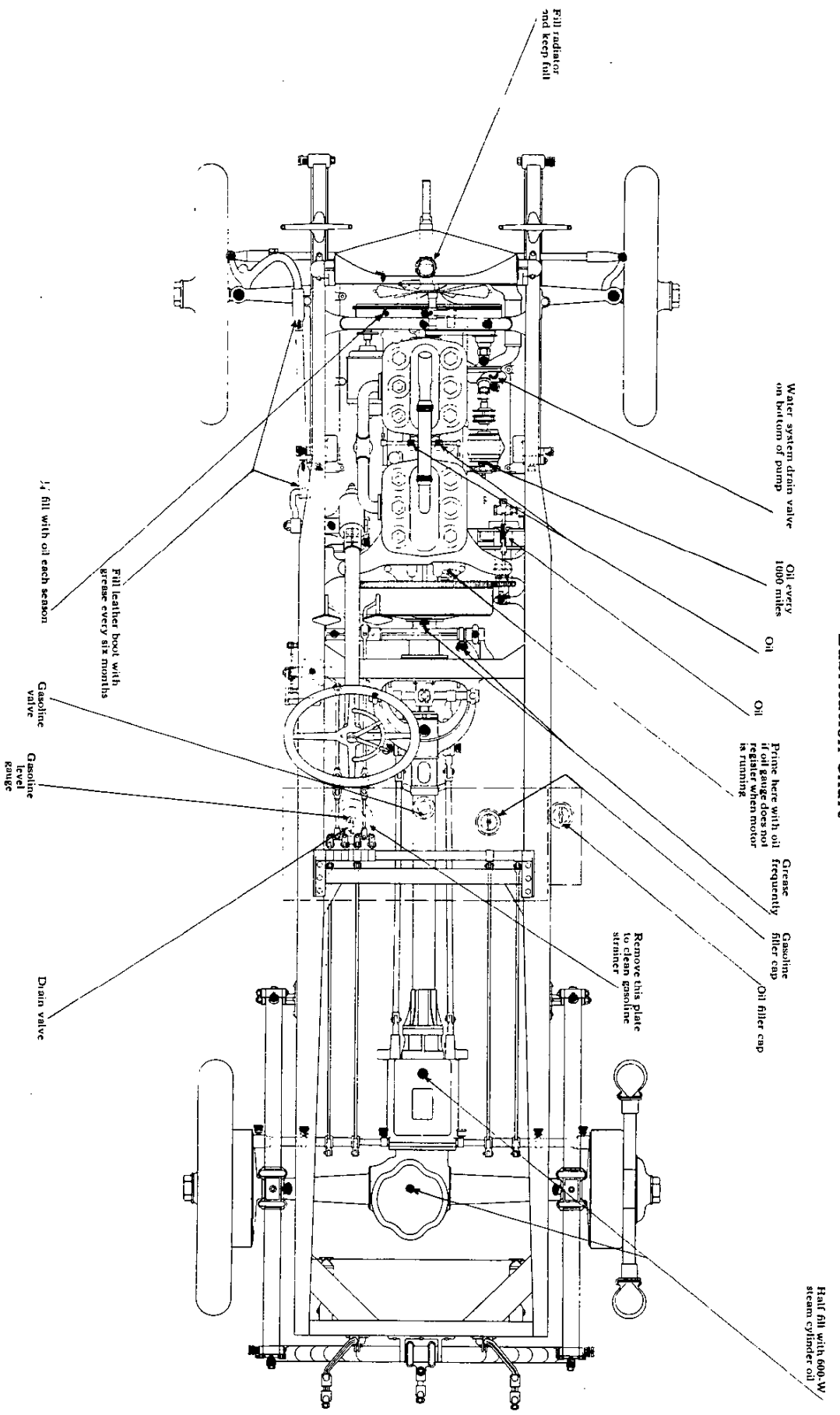
Gasoline cock

Half fill with 600 W steam cylinder oil

Air tank

Keep all grease cups (marked in red) filled up - use good graphite grease

CHEVROLET-40-1913 Lubrication Chart



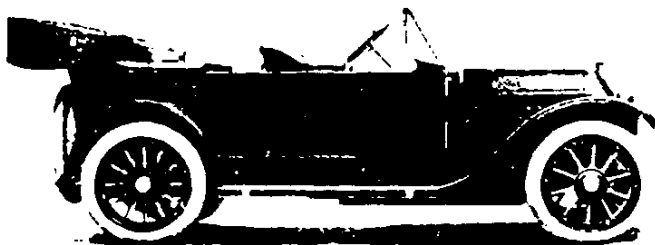


5

6



Chevrolet
MOTOR
CARS



"Chevrolet" Type C

What We Stand for

"The Best in Motor Cars"

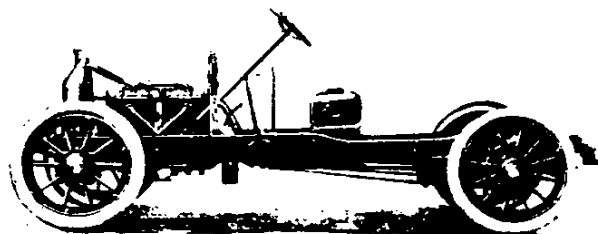
Consistent Construction
Perfectly Balanced Motors
Absolutely Quiet Motors
Platform Spring Suspension
Transmission on Rear Axle
Left-Hand Drive, Center Control
Clean Running Boards
Electric Light by Dynamo
Reliable and Efficient Self-Starter
Attention to Detail

The above, briefly stated, is our conception
of what a REAL motor car should be

"The Product of Experience"

Chevrolet
MOTOR
CARS

THE PRODUCT OF EXPERIENCE

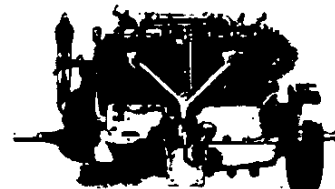


"Chevrolet" Chassis

"Chevrolet"

For the public who are as particular about having the best as we are about making it.

The
Chevrolet
Motor—
Six-Cylinder
50-Horse
Power



Factory Representatives

Republic Motor Company

Of Michigan

Detroit, Michigan

"The Product of Experience"

NAU-GIFT



6

+



ORIGINAL

1913 BABY GRAND HAD A ROUNDED COME -
HOWEVER SPECS. ARE THE SAME

STANDARD EQUIPMENT

- Demountable Rims
- Non-Skid Tires on Rear Wheels
- Tire Irons
- License Brackets Front and Rear
- Complete Tool Equipment

PRICE

Including lighting and starting system.

\$750.00

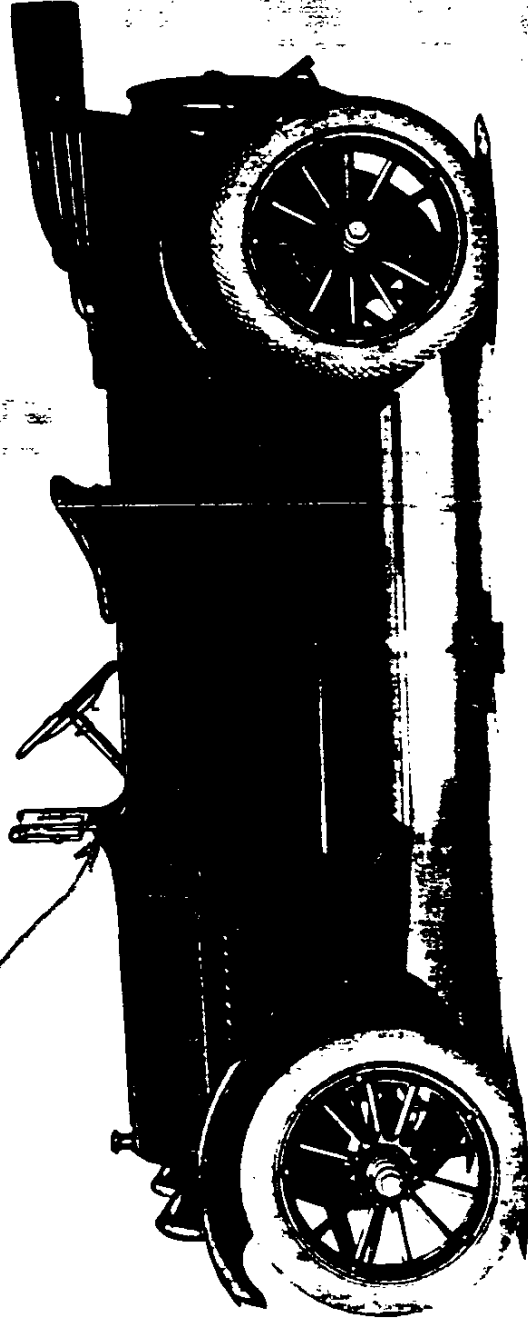
f.o.b. Flint, Mich.

STANDARD EQUIPMENT

- Mohair Tailored Top, with Covers and Side Curtains
- Windshield
- Speedometer
- Electric Horn
- Complete Lamp Equipment

NOTE

Auto-Lite, type unit starting and lighting system



"The Product of Experience"

Chevrolet "Baby Grand"

Body Features

The body of the "BABY GRAND" is made of metal, with steel sills and door-posts, giving sufficient strength to the sides to withstand the pull of the top when raised and the weight and drag of the top when lowered. It allows perfect fitting doors and prevents rattles, which are so objectionable in cheaply made bodies. The doors are hung with concealed hinges.

Particular attention is called to the body lines. There is something distinctively individual about the Chevrolet "BABY GRAND" body with its very handsome Brewster-green finish, neat lines and clean cut appearance. No expense has been spared in the design and materials used in its construction.

A detail of the body which should not be overlooked is the nicked hood ledge on the front side of the dash, providing a proper support for the hood when raised and preventing the marred or scratching of the body.

Attention is also called to the quality of the upholstering in Chevrolet models. We use high-grade buffed leather with curbing hair, also the best springs obtainable for the cushions. This combination insures to the owner of a Chevrolet car a comfortable easy-riding car, together with beautiful body lines and finish.

We manufacture in our own shops our tops, covers and side curtains of high-grade mohair top material. Each top and set curtains are tailored and individually fitted.

CHEVROLET 1914 BABY GRAND H-4

STANDARD FEATURES:

- Jack & Tire Pump
- Five Lamps & Presto-O-Lite Tank
- Windshield
- Top
- Boot
- Curtains
- 56 inch Tread
- Electric Horn
- Speedometer
- Tool Equipment

OPTIONS:

- White Tires
- Electrical System
- Running Board/Luggage Rack
- 60 inch Tread

WEIGHT: 2500 lb.
WHEEL BASE: 104 inches
BORE AND STROKE: 3-11/16 X 4 inches
DISPLACEMENT: 171 inches
TRANSMISSION: 3-speed sliding gear (cone clutch)
ENGINE: Mason built 4-cylinder, overhead valve.
(The 1914 Series H cars were the first Chevrolets to use a Mason 4-cylinder overhead valve engine.)

AVAILABLE IN GRAY, WITH BLACK CHASSIS AND GRAY FENDER

BASE COST: \$875
WITH OPTIONAL ELECTRICAL SYSTEM: \$1,000

- . Production and sales in this year totalled 5,005, and almost 80% were Series H.
- . The Chevrolet bow tie logo made its debut on the 1914 model.

ORIGINAL

100

100

100