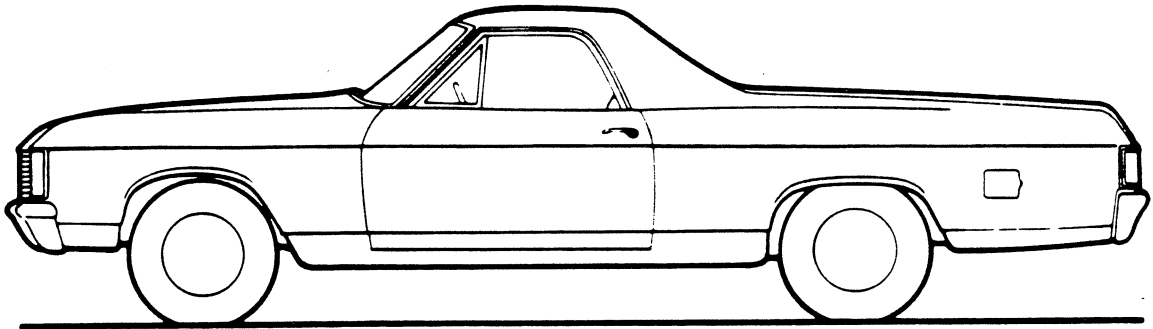


1 9 7 2 -- O R I G I N A L
EL CAMINO

EL CAMINO MODEL SELECTOR



ENGINE	STANDARD	CUSTOM
6 cyl.	13380	—
8 cyl.	13480	—
8 cyl.	—	13680

EL CAMINO

STANDARD SPECIFICATIONS

(See Blue Tab Section for Specification Details)

Engine Base equip—6 cyl. —8 cyl. Clutch—6 cyl. —8 cyl. Air Filter Oil Filter Exhaust System Exhaust Control	250-6 307-V8 9½"; 72 sq. in. 10"; 101 sq. in. Oiled-paper element Throwaway type 1-pt. Single; aluminized Emission Control Equipment
Suspension, Front Capacity Springs @ ground Shock Absorbers	Independent; Coil Spring 1900 lb. 950 lb. ea. 1" dia.
Suspension, Rear Axle Capacity Axle Ratio Springs @ ground Shock Absorbers	Hypoid; Coil Spring 2700 lb. 3.36 1100 lb. ea. 1" dia.; air booster type
Brakes Front Rear Parking	Hydraulic; Self-adjusting Drum; 9½" x 2½" Drum; 9½" x 2" Cable to Rear Wheels
Electrical → Battery—6 cyl. —8 cyl. Delcotron Generator	12-volt; negative ground 45 amp. 61 amp. 37 amp.
Frame	Carbon steel; perimeter type
Fuel Tank (nominal capacity)	19 gal.
Steering	Recirculating ball
Transmission Shift Location	Fully synchronized 3-speed Steering Column
Tires	(5) E78-14B(4PR)
Wheels	(5) Disc; 14" x 5"

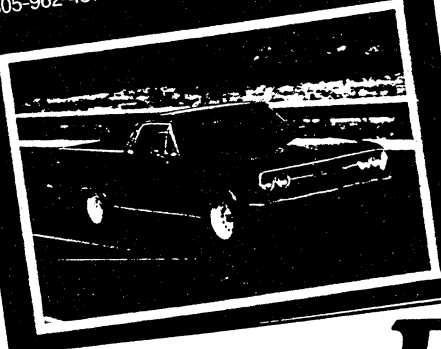
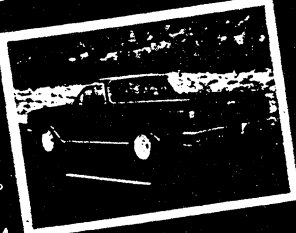


THE EL CAMINO STORE

59-60
64-72

EL CAMINO PARTS

NEW • USED • REPRODUCTION
QUALITY GUARANTEED
PARTS •
HUS • LEAD SPECIALTY
805-962-4514



**Golden State
Pickup Parts is
at it again!**

The El Camino Store

Photos by Doug Marion

Over the years, whenever readers called us seeking parts or restoration help for their Chevy pickups, we referred them directly to Seth Doulton's Golden State Pickup Parts in Santa Barbara, California. Because of his close proximity to Los Angeles and our similar interests, we've known Seth for a decade. If you live elsewhere,

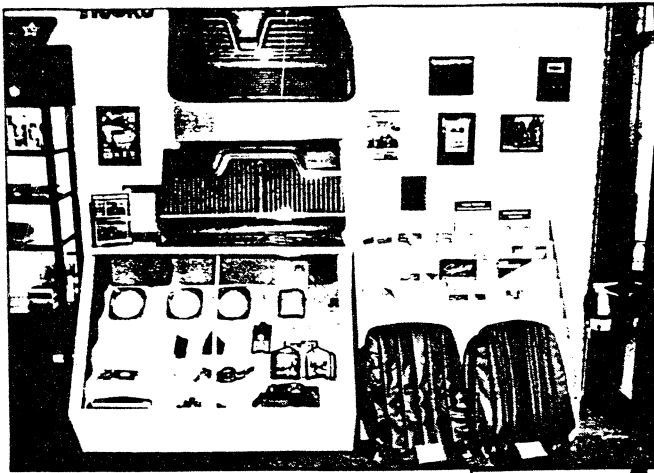
though *Hemming's Motor News* usually lists several other truck parts firms of national repute.

How good is Golden State? Well, they offer a lifetime warranty on just about everything they sell, and SC has never received a call back from anyone seeking more information.

So what's new at Golden State Pickup Parts? Well two years ago, Seth called SC with an idea. It seems that El Camino owners are always calling him for parts and information. Would a division of Golden State Pickup Parts, called



El Camino Store and Golden State Pickup Parts has a well-stocked showroom. Stop by anytime.



El Camino chrome trim, shop manuals, door panels and bucket seat covers on display.

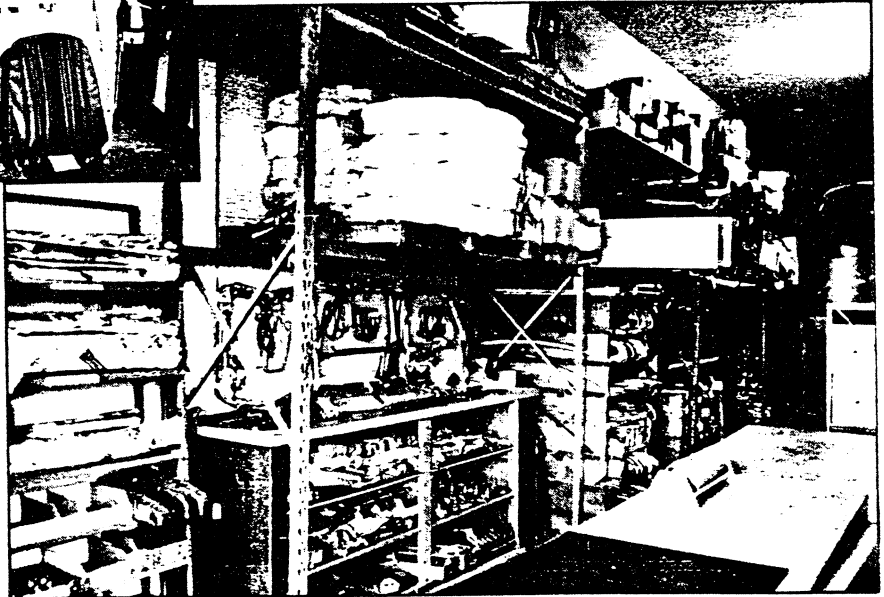
Need rechromed trim and moldings for your 1947-1972 Chevy or GMC pickup or 1959-1972 El Camino?

The El Camino Store, be viable? SC said yes. Seth agreed and the rest is history.

We have purposely refrained from mentioning The El Camino Store too much because with only so much time in a day, week and month, we wanted Seth and crew to get their feet on the ground. As anyone will tell you, servicing everyone's needs is a never-ending job, but at this point in time The El Camino Store is a viable source to satisfy your needs and wants. They have a very professional 50-page catalog covering 1959-1960 and 1964-1972 El Caminos, which costs \$3.

Parts sold at The El Camino Store are backed by the same warranty that applies to other truck parts sold by Golden State. It reads: "The El Camino Store will fully back and replace any part that they sell that becomes defective because of workmanship or material for the life of your truck. That's right, if you buy a chrome bumper from them and in 10 years it rusts, they will replace it free with proof of purchase." They sell new, used and reproduced parts. NOS is their specialty. •

THE EL CAMINO STORE
618 E. Gutierrez St.
Santa Barbara, CA 93103
(805) 962-4514



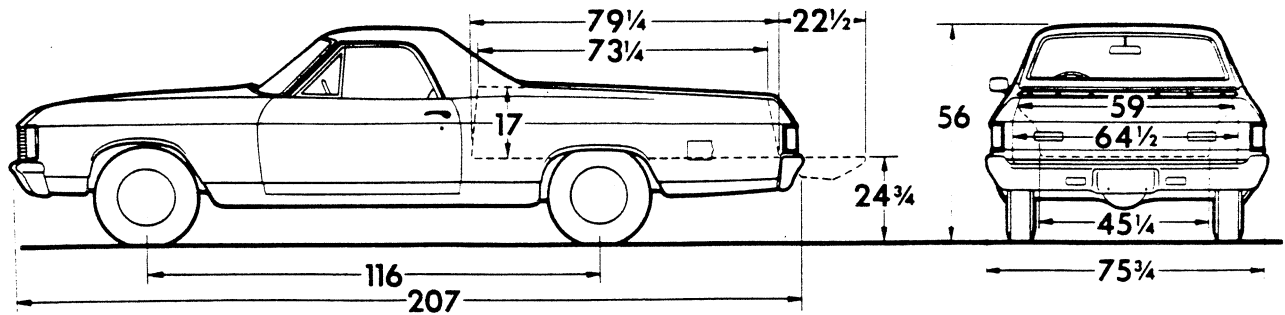
Here's a before-and-after pickup heater system.

Both firms sponsor "Chevy Madness Day," a huge event held in November at Magic Mountain, north of Los Angeles.



Here are the guys and gals at The El Camino Store /Golden State Pickup Parts. Guy at top-rear is Seth Doulton.

EL CAMINO



Models	Engine No. Cyl.	Curb Weights (lb)			Ground Clearance (In.)★	
		Front	Rear	Total	Front	Rear
13380	6	1790	1538	3328	7½	7
13480	8	1886	1552	3438		
13680	8	1894	1560	3454		

★ Dimensions with std equipment, unloaded.

→ GVW SELECTOR

Model	GVW Range	Minimum Equipment Required for GVW Range		
		Tires, Front	Tires, Rear	Chassis Equipment
13380	4560 to 4940	E78-14B(4PR)	E78-14B(4PR)	Standard
13480	4690 to 5350	E78-14B(4PR)	E78-14B(4PR)	
13680	4690 to 5350	E78-14B(4PR)	E78-14B(4PR)	

EL CAMINO

Engine, Transmission and Rear Axle Combinations (Engine horsepower ratings are reflected at "net" horsepower)

ENGINES		TRANSMISSIONS	SHIFT LEVER LOCATION		REAR AXLE RATIOS*		
Option Number and Model Application	Description	Type (Std or Optional)	Without Console	With Optional Console	Std	Optional	
						Perf	Trailering

STANDARD ENGINES

■ Standard Six-Cylinder on El Camino 6-Cyl Model	110-hp Turbo-Thrift 250 6-Cylinder 250-cu-in displacement Single barrel carburetor 8.5:1 compression ratio Hydraulic valve lifters Single exhaust	3-Speed (Std)—ZW4	Column	Not Available	3.36	—	—
		Powerglide—M35	Column	In Console w/Floor Shift	3.36	—	—
● Standard Eight-Cylinder on El Camino V8 Models	130-hp Turbo-Fire 307 8-Cylinder 307-cu-in displacement Regular camshaft 2-barrel carburetor 8.5:1 compression ratio Hydraulic valve lifters Single exhaust	3-Speed (Std)—ZW4	Column	Not Available	3.36	—	—
		Powerglide—M35	Column	In Console w/Floor Shift	3.36	—	—
		Turbo Hydra-matic—M40 Without Special Suspension	Column	In Console w/Floor Shift	3.08	—	—
		With Special Suspension	Column	In Console w/Floor Shift	3.08	—	3.31

OPTIONAL ENGINES

■ Option L65 on El Camino V8 Models	165-hp Turbo-Fire 350 (2/SE) 8-Cylinder 350-cu-in displacement Regular camshaft 2-barrel carburetor 8.5:1 compression ratio Hydraulic valve lifters Single exhaust	3-Speed (Std)—ZW4	Column	Not Available	3.08	—	—
		3-Speed—M11	Floor With Boot	In Console	3.08	—	—
		Turbo Hydra-matic—M40 Without Special Suspension	Column	In Console w/Floor Shift	2.73	—	—
		With Special Suspension	Column	In Console w/Floor Shift	2.73	—	3.31
■ Option L48 on El Camino V8 Models	175-hp Turbo-Fire 350 (4/SE) 8-Cylinder 350-cu-in displacement Regular camshaft 4-barrel carburetor 8.5:1 compression ratio Hydraulic valve lifters Single exhaust	Turbo Hydra-matic—M40 Without Special Suspension	Column	In Console w/Floor Shift	2.73	—	—
		With Special Suspension	Column	In Console w/Floor Shift	2.73	—	3.31
		3-Speed—M11	Floor With Boot	In Console	3.31	—	—
		4-Speed Wide-Range—M20	Floor With Boot	In Console	3.31	—	—
● Option LS3 on El Camino V8 Models	240-hp Turbo-Jet 400 8-Cylinder 402-cu-in displacement Regular camshaft 4-barrel carburetor 8.5:1 compression ratio Hydraulic valve lifters Dual exhausts	Turbo Hydra-matic—M40 Without Special Suspension	Column	In Console w/Floor Shift	2.73	—	—
		With Special Suspension	Column	In Console w/Floor Shift	2.73	—	3.31
		Special 3-Speed—MC1	Floor With Boot	In Console	3.31	—	—
		4-Speed Wide-Range—M20	Floor With Boot	In Console	3.31	—	—
● Option LS5 on V8 Custom El Camino Model with SS Equipment	270-hp Turbo-Jet 454 8-Cylinder 454-cu-in displacement High-lift camshaft 4-barrel carburetor 8.5:1 compression ratio Hydraulic valve lifters Dual exhausts	Turbo Hydra-matic—M40	Column	In Console w/Floor Shift	3.31	—	—
		Special 4-Speed Close-Ratio—M22	Floor With Boot	In Console	3.31	—	—

* All ratios available as Positraction.

■ Available for registration in the State of California when California Assembly Line Emission Test (Option YF5) is applied.

● Not available for registration in the State of California.

EL CAMINO

1972 MODELS WITH STANDARD EQUIPMENT (116" Wheelbase)

Model Number and Description	Factory D & H [§]	List Price	Mfr's Suggested Retail Price*	Destination Group No.	Destination Charge	Total
------------------------------	----------------------------	------------	-------------------------------	-----------------------	--------------------	-------

6-Cylinder Model

■ 110-hp Turbo-Thrift 250 Engine

13380 El Camino—3-Passenger

\$2790.70

14

8-Cylinder Models

◆ 130-hp Turbo-Fire 307 Engine

13480 El Camino—3-Passenger

2880.70

14

13680 Custom El Camino—
3-Passenger

2959.70

14

■ Available for registration in the State of California when California Assembly Line Emission Test (Option YF5) is applied.

◆ Available for registration in the State of California when optional 165-hp or 175-hp Turbo-Fire 350 engine is ordered and California Assembly Line Emission Test is applied.

* Manufacturer's Suggested Retail Prices do not include state and local taxes, license fees, options or accessories.

OPTIONS AND ACCESSORIES WHEN INSTALLED BY CHEVROLET

Description	Option Number	Added Weight		Factory D & H [§]	List Price	Mfr's Suggested Retail Delivered Price [◆]
		(F)	(R)			

MODEL OPTION

SS Equipment: Custom El Camino model with optional engine and transmission only. Includes power disc/drum brakes; black-finished grille; special domed hood with locking pins; LH remote-control mirrors; SS emblems on fenders and tailgate; 15" x 7" wheels with bright lug nuts, special center caps and trim rings plus F60-15 white lettered tires

Z15

22 23

\$350.05

FEATURE GROUPS

(Any item contained in a feature group may be ordered separately)

APPEARANCE GUARD GROUP

INCLUDES:

(A) Guards, Bumper: Front	V30	4	-1	—	15.00
(B) Guards, Door Edge	B93	0	0	—	6.00
(C) Mats, Color-Keyed Floor: 2 Front	B37	5	2	—	6.50
(D) Mirror, Visor Vanity	D34	0	0	—	3.00
For all models—Includes A, B, C & D	ZP5	0	0	—	30.50

OPERATING CONVENIENCE GROUP: Not available when SS Equipment is ordered with special instrumentation

INCLUDES:

(A) Clock, Electric: Included when special instrumentation is ordered	U35	0	0	—	16.00
(C) Mirror, L.H. Outside Remote-Control Rearview: Included when SS Equipment is ordered	D33	1	1	—	12.00
For all models without special instrumentation or SS Equipment—Includes A & C	ZQ2	0	0	—	28.00
For all models with special instrumentation without SS Equipment—Includes C	ZQ2	0	0	—	12.00
For all models with SS Equipment without special instrumentation—Includes A	ZQ2	0	0	—	16.00

§ D&H amounts reflect provision for pass through of tire weight tax imposed on manufacturer or importer of tires.

◆ State and local taxes not included.

EL CAMINO

OPTIONS AND ACCESSORIES WHEN INSTALLED BY CHEVROLET

Description	Option Number	Added Weight		Factory D & H [§]	List Price	Mfr's Suggested Retail Delivered Price [⊕]
		(F)	(R)			

POWER TEAMS

(See Power Teams Chart for availability and complete engine specifications)

Engines: V8 models only 165-hp Turbo-Fire 350 (2/SE). Available for registration in the State of California	L65	17	3	—		\$ 26.00
175-hp Turbo-Fire 350 (4/SE). Available for registration in the State of California	L48	23	3	—		72.00
240-hp Turbo-Jet 400. Available only when F78-14 tires or SS Equipment is ordered. Not available for registration in the State of California	LS3	211	50	—		168.00
270-hp Turbo-Jet 454. Available only when SS Equipment and HD battery are ordered. Not available for registration in the State of California. Includes HD radiator when air conditioning is ordered	L55	207	49	—		272.00
Transmissions: <i>Powerglide</i> 6-Cyl models	M35	-3	-2	—		174.00
V8 models. Available only when standard engine is specified	M35	-2	-1	—		185.00
<i>Turbo Hydra-matic</i> . V8 models only. With standard, 165-hp or 175-hp Turbo-Fire 350 engine	M40		(c)	—		210.00
With 240-hp Turbo-Jet 400 or 270-hp Turbo-Jet 454 engine	M40		(d)	—		231.00
3-Speed. Floor-mounted, manual. V8 models with 165-hp or 175-hp Turbo-Fire 350 engine only	M11	5	2	—		128.00
Special 3-Speed. Floor-mounted, manual. V8 models with 240-hp Turbo-Jet 400 engine only	MC1	24	6	—		128.00
4-Speed Wide-Range. V8 models with 165-hp or 175-hp Turbo-Fire 350 or 240-hp Turbo-Jet 400 engine only	M20		(a)	—		190.00
Special 4-Speed Close-Ratio. Available only when 270-hp Turbo-Jet 454 engine is ordered	M22	3	1	—		231.00
Axle, Positraction Rear	G80	0	0	—		45.00
Axle Ratio: Trailering. V8 models only. Available only when standard, 165-hp or 175-hp Turbo-Fire 350 or 240-hp Turbo-Jet 400 engine with special suspension and Turbo Hydra-matic transmission are ordered	YD1	0	0	—		12.00

POWER ASSISTS

Brakes, Power: With drum-type brakes. Not available when SS Equipment is ordered	J50	12	1	—		46.00
With disc/drum brakes. Included when SS Equipment is ordered	JL2	15	1	—		68.00
Door Lock System, Power: Electric	AU3	5	3	—		45.00
Steering, Power	N40	27	1	—		113.00

OTHER OPTIONS

Air Conditioning: Four-Season. V8 models only. Includes 61-amp generator and increased cooling	C60	96	6	—		397.00
Battery, Heavy-Duty: 15-plate, 80-amp-hr	T60		(e)	—		15.00
Belts, Custom Deluxe Seat and Shoulder: Includes brushed metal buckles and color-keyed belts (Standard plastic buckles and belts are black). Replacing standard number of belts. With bench seat; 3 seat and 2 shoulder	AK1	1	0	—		11.50
With bucket seats; 2 seat and 2 shoulder	AK1	1	0	—		10.00
California Assembly Line Emission Test: Released to conform with State of California registration requirements. Not available on V8 models when standard, 240-hp Turbo-Jet 400 or 270-hp Turbo-Jet 454 engine is ordered	YF5	0	0	—		15.00
Console: Custom El Camino model only. Available only when bucket seats and optional transmission are ordered. Includes compartment. Shift lever is mounted on console	D55		(b)	—		57.00
Generator, 63-Amp Delcotron: Without air conditioning	K85	1	0	—		26.00
With air conditioning	K85	1	0	—		5.00
Glass, Soft-Ray Tinted: All windows	A01	0	0	—		42.00
Hood, Cowl Induction: Available only when SS Equipment and 240-hp Turbo-Jet 400 or 270-hp Turbo-Jet 454 engine is ordered. Includes sport striping on hood, air intake valve at rear of hood and hood to air cleaner duct With black striping. Not available when Midnight Bronze exterior body color paint is ordered	ZL2/YF8	10	0	—		128.00
With white striping. Not available when white exterior body color paint is ordered	ZL2/ZR8	10	0	—		128.00

[§] D&H amounts reflect provision for pass through of tire weight tax imposed on manufacturer or importer of tires.

[⊕] State and local taxes not included.

(a) With 350 engine (F) 12 (R) 5; With 400 engine (F) 3 (R) 1.

(b) With automatic transmission (F) 13 (R) 4; With manual transmission (F) 7 (R) 2.

(c) With 307 or 165 hp 350 engine (F) 18 (R) 4; With 175-hp 350 engine (F) 22 (R) 4.

(d) With 400 engine (F) 36 (R) 9; With 454 engine (F) 41 (R) 9.

(e) With 6-cyl models (F) 14 (R) -2; With V8 models (F) 2 (R) 0.

EL CAMINO

OPTIONS AND ACCESSORIES WHEN INSTALLED BY CHEVROLET

Description	Option Number	Added Weight		Factory D & H§	List Price	Mfr's Suggested Retail Delivered Price⊕
		(F)	(R)			
Instrumentation, Special: Custom El Camino model only. Includes clock, tachometer, ammeter and temperature gauges plus high level ventilation	U14	1	0	—		\$ 97.00
Lighting, Auxiliary: Includes ashtray, courtesy, mirror map and underhood lights						
Custom El Camino model only	ZJ9	1	0	—		17.50
Standard El Camino models only. Also includes glove compartment light	ZJ9	1	0	—		21.00
Moldings:						
Body Side	B84	1	1	—		33.00
Window. Not available on Custom El Camino model	B90	1	1	—		21.00
Paint, Exterior: Solid color		0	0	—		N.C.
Radiator, Heavy-Duty: Included when 270-hp Turbo-Jet 454 engine with air conditioning is ordered.						
6-cyl model	V01	4	-1	—		14.00
V8 models. Includes extra HD cooling	V01		(a)	—		21.00
Radio Equipment: Pushbutton						
AM Radio	U63	6	2	—		65.00
AM/FM Radio	U69	6	3	—		135.00
Roof Cover, Vinyl: Includes bright metal outline moldings. See Color Selection Chart for exterior color availability						
Black	BB	N.A.	N.A.	—		62.00
Blue (Medium). Roof outline moldings are black	DD			—	Will Advise Availability	
Covert (Light)	TT	N.A.	N.A.	—		62.00
Green (Medium)	GG	N.A.	N.A.	—		62.00
Pewter, Silver. Roof outline moldings are black	HH			—	Will Advise Availability	
Tan (Medium)	FF	N.A.	N.A.	—		62.00
White	AA	N.A.	N.A.	—		62.00
Speed and Cruise Control: (Cruise-Master). V8 models with automatic transmission and power brakes only	K30	5	0	—		62.00
Steering Wheels:						
Comfortilt. Available only when optional transmission is ordered	N33	1	1	—		44.00
Custom. Not available when comfortilt steering wheel is ordered	NK2	N.A.	N.A.	—		15.00
Sport (4-Spoke)	NK4	0	0	—		15.00
Stripes, Sport: Hood stripes only. Custom El Camino model only. Included when cowl induction hood is ordered.						
Black. Not available when Midnight Bronze exterior body color paint is ordered	D88/YF8	0	0	—		51.00
White. Not available when white exterior body color paint is ordered	D88/ZR8	0	0	—		51.00
Suspension, Special Front and Rear: Includes special front springs and 2700-lb each capacity rear springs	F40	0	0	—		17.00
Trim, Interior: See Interior and Exterior Color Selection Chart for availability and ordering information.						
Strato-Bucket Seats. Custom El Camino model only. Also includes Astro Ventilation vent-ports	A51	10	9	—		133.00
Wheel Covers: Not available when SS Equipment is ordered						
Bright Metal	P01	1	1	—		26.00
Custom	P02		(b)	—		82.00
Wheels, Rally: Not available when SS Equipment is ordered. Includes special 14" x 6" wheels, special hub caps and trim rings	ZJ7		(c)	—		44.00

FACTORY INSTALLED REGULAR PRODUCTION TIRES

Replaces (5) E78-14/B Bias Belted Ply Blackwall (Without SS Equipment)						
(5) E78-14/B Bias Belted Ply White Stripe	PL3	1	1	N.C.		28.00
(5) F78-14/B Bias Belted Ply Blackwall						
Without 240-hp engine	PX5	3	5	\$.90		17.40
With 240-hp engine. Also includes 14" x 6" wheels	PX5	3	5	.90		23.40
(5) F78-14/B Bias Belted Ply White Stripe						
Without 240-hp engine	PX6	4	6	.90		47.40
With 240-hp engine. Also includes 14" x 6" wheels	PX6	4	6	.90		52.40

§ D&H amounts reflect provision for pass through of tire weight tax imposed on manufacturer or importer of tires.

⊕ State and local taxes not included.

(a) With 307 engine (F) 16 (R) -3; with 350, 400 or 454 engine (F) 8 (R) -1.

(b) Over 14" x 5" wheels (F) 17 (R) 19; over 14" x 6" wheels (F) 13 (R) 13; over 15" x 6" wheels (F) 13 (R) 16.

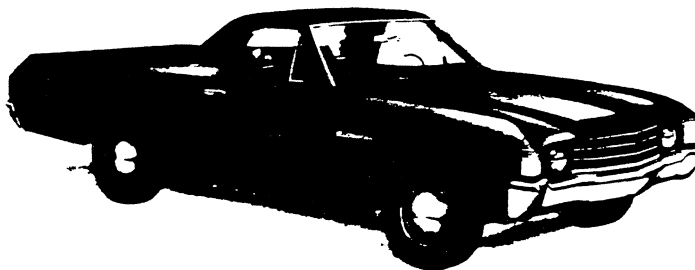
(c) Over 14" x 5" wheels (F) 11 (R) 14; over 14" x 6" wheels (F) 7 (R) 8; over 15" x 6" wheels (F) 9 (R) 11.

EL CAMINO

STANDARD EL CAMINO MODEL

The Standard model includes the following items as standard equipment.

EXTERIOR FEATURES



- **Bright Appearance Items**
 - Back window reveal moldings
 - "Chevrolet" Nameplate: Mounted center of tailgate
 - Chrome front and rear bumpers
 - Door Lock Handles
 - Door Lock Cylinder Covers
 - "El Camino" Nameplate: Side of front fender
 - Front parking lamp bezels
 - Grille outer edge moldings
 - Head lamp bezel bead
 - Hood moldings
 - Hub caps
 - Tailgate and pickup box belt moldings
 - Tail lamp rims
 - Ventipane frames
 - Windshield reveal moldings
- **Color:** See Exterior and Interior Color Selection Chart
- **Doors:** RH and LH side doors and tailgate
- **Door Opening and Locking Methods:**
 - Side doors; pushbutton latch release with key lock cylinder
 - Tailgate; single handle double latch
- **Glass:** Windshield, side door drop glass and ventipane in each door and back glass
- **Grille:** Plastic grid; painted black and silver
- **Instrument Panel Knobs:** Marked with function symbols
- **Lights:**
 - Back-up lights
 - Combination parking/direction/side marker. Two front; single lens
 - Combination tail/stop/direction/side marker. Two rear Class A
 - Headlights: Two; Power Beam
 - License plate: single rear
- **Mirror:** LH chrome fixed arm with 5" rectangular head
- **Horn:** Single "D" note
- **Side Door Beams:** Steel beam running full length inside each side door
- **Tools:** Mechanical jack; wheel wrench
- **Undercoating:** Partial under body and full under wheel houses
- **Wheels:** Painted

INTERIOR FEATURES



- **Air Vents:** RH and LH cowl side; individually controlled
- **Arm Rests:** RH and LH full depth
- **Ash Tray**
- **Bright Metal Items**
 - Control knobs with black accents
 - Seat back latch and adjuster knobs
 - Window regulator knobs
- **Cigarette Lighter**
- **Colors, Interior**
 - Paint: Same as exterior main color choice
 - Trim: Choice of black or tan
- **Courtesy Light Switches:** Door actuated dome lamp
- **Door Lock:** Inside; pushbutton lock/release
- **Door Seals:** Closed-cell-type rubber
- **Floor Mat:** Color keyed, vinyl covered rubber
- **Instruments**
 - Gauges: Speedometer, odometer and fuel
 - Switches: Exterior lights, instrument lights, dome light, wiper-washer, headlight beam (foot), ignition, directional signal with lane change position, hazard warning and heater
 - Warning Lights: Generator, oil pressure, engine temperature, brake warning, direction signals and high beam
- **Instrument Panel:** Fiberglass filled plastic
- **Heater and Defroster:** Deluxe-air
- **Interior Lights:** Instrument and dome operated by main light switch
- **Insulation and Sound Deadening:** Dash (firewall), under floor mat and other strategic points
- **Mirror, Rearview:** Inside 12" wide
- **Seat:** Full width, textured all-vinyl trim
- **Seat and Shoulder Belts:** 3 sets of seat belts; 2 shoulder belts in outboard positions
- **Steering Wheel:** Colored plastic with center padded shroud
- **Sunshades:** RH and LH padded vinyl
- **Scuff Plate:** Side door opening protection and floor mat retainer
- **Spare Tire Carrier:** Inside behind seat on driver side
- **Steering Lock:** Column mounted combination ignition switch, transmission lock, steering lock and accessory switch
- **Trim Panels:** Vinyl door trim panels with bright trim, vinyl coated cowl side panels and vinyl coated headliner
- **Warning Buzzer:** Ignition key removal warning; activated by opening side door with key in switch
- **Window Regulator Knobs:** Bright metal
- **Windshield Pillar Pads**

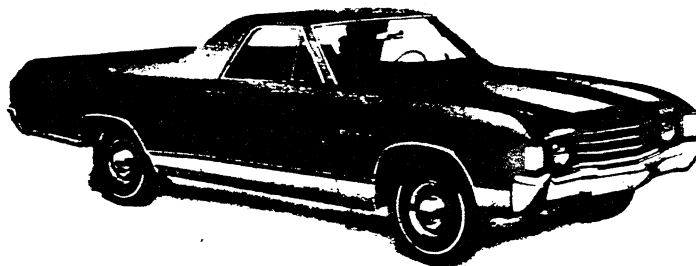
EL CAMINO

CUSTOM EL CAMINO MODEL

(The Custom model includes all items listed for the Standard model except for the following additions or substitutions)

EXTERIOR FEATURES

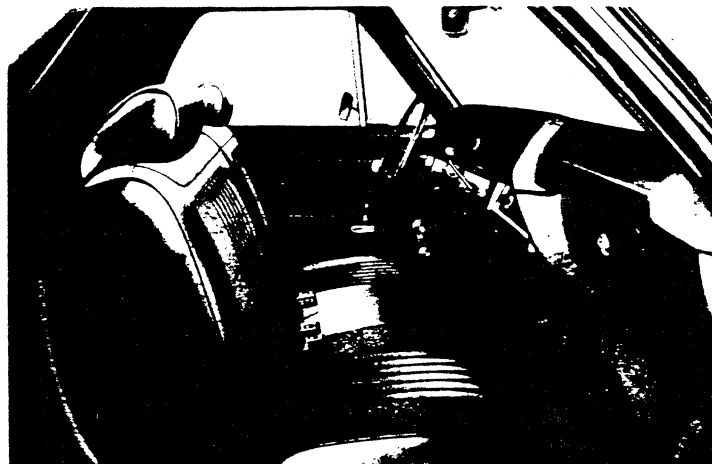
- **Bright Appearance Items**
 - Grille center-strip moldings
 - Fender lower side moldings
 - Door lower side molding
 - Rear quarter lower side molding
 - Rear end dual trim moldings with woodgrain insert
 - Wheel opening front and rear edge moldings
 - Window Reveal Moldings: Side doors
- **Hidden Windshield Wipers**
- **Silver paint:** Full length side below lower side moldings



INTERIOR FEATURES

Additional interior items included in Custom El Camino models

- **Carpeting:** Color keyed
- **Colors, Interior Trim:** Choice of black, tan or covert
- **Headliner:** Deluxe vinyl coated
- **Instrument Panel Crown Pad and dull paint finish**
- **Mirror; Rearview:** Dull finish chrome on back and support
- **Seat:** Full-width with custom vinyl trim

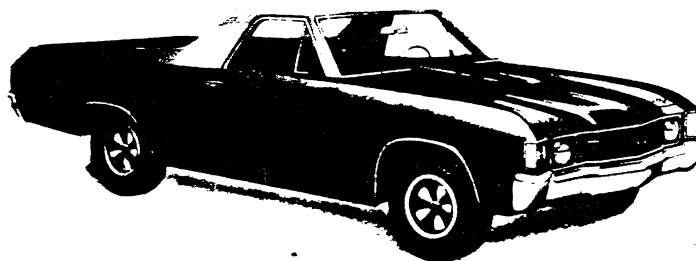


CUSTOM EL CAMINO WITH SS OPTION—RPO Z15

(This Option includes all items listed above plus the following additions or substitutions)

EXTERIOR FEATURES

- **Bright Appearance Items**
 - Rear end dual trim moldings with black paint between them
 - "SS" emblem or nameplate on front fender sides, grille and tailgate
- **Grille:** Painted black with center "SS" emblem
- **Hood:** Special domed center panel with two simulated air-intake grilles at the rear
- **Hood hold-down pins:** Front; bright metal
- **Mirror:** LH remote controlled
- **Tires:** F60-15 Decorated with manufacturers' names, tire trade name and the size in bold white letters and numerals
- **Wheels:** 15" x 7" with bright lug nuts and special center caps, hub "SS" emblem and trim rings



INTERIOR FEATURES

Additional interior items included in Custom El Camino with "SS" option

- **Seat:** Full width with special pattern and custom vinyl trim. Optional Strato-Bucket seats are also available.
- **"SS" emblem nameplate:** On door trim panels and center of steering wheel shroud
- **Trim Panels, Doors:** Special vinyl covered pattern



EL CAMINO INTERIOR AND EXTERIOR SELECTION CHART

PLEASE NOTE: The exterior and interior combinations for solid color paint shown in the chart below have been established as the combinations that would be attractive to the average customer. Orders for non-recommended solid color exterior and interior trim combinations may be submitted, provided the dealer initials the appropriate order form block as verification that the requested combination is definitely desired.

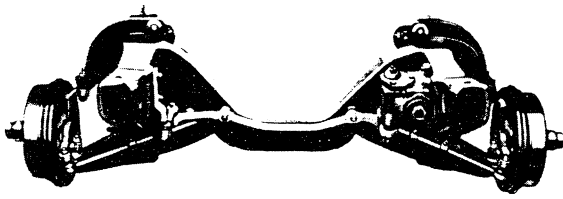
This procedure does not apply to orders that specify a vinyl roof cover, as combinations shown are the only combinations that have been approved.

VINYL ROOF	SOLID EXTERIOR COLOR AVAILABILITY	
BLACK	BB	All Exterior Colors.
BLUE (Medium)	DD	White or Ascot Blue Exterior Colors only.
COVERT (Light)	TT	Bronze, Brown, Gold, Sequoia Green, Orange, Tan, White or Yellow Exterior Colors only.
GREEN (Medium)	GG	Gulf or Sequoia Green, Silver or White Exterior Colors only.
PEWTER, SILVER	HH	White, Silver or Sequoia Green Exterior Colors only.
TAN (Medium)	FF	Bronze, Mohave Gold or White Exterior Colors only.
WHITE	AA	All Exterior Colors.

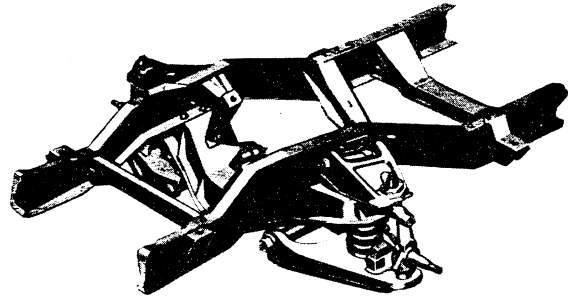
Type of Seat			INTERIOR TRIM		
			Black	Covert (Light)	Tan (Medium)
			Vinyl	Vinyl	Vinyl
CUSTOM EL CAMINO	Bench		704	732	720
	Strato-Bucket (Opt. A51)		704	732	720
EL CAMINO	Bench		701		719
EXTERIOR COLOR	CODE				
SOLID	Lower	Upper			
Blue, Ascot	24	24	X		
Blue, Mulsanne	26	26	X		
Bronze, Midnight	68	68	X	X	X
Brown, Golden	57	57	X	X	X
Gold, Mohave	63	63	X	X	X
Gold, Placer	53	53	X	X	
Green, Gulf	43	43	X	X	
Green, Sequoia	48	48	X	X	X
Green, Spring	36	36	X		
Orange Flame	65	65	X		
Red, Cranberry	75	75	X		
Silver, Pewter	14	14	X		X
Tan, Covert	50	50	X	X	X
White, Antique	11	11	X	X	X
Yellow, Cream	56	56	X	X	X

FRONT SUSPENSIONS

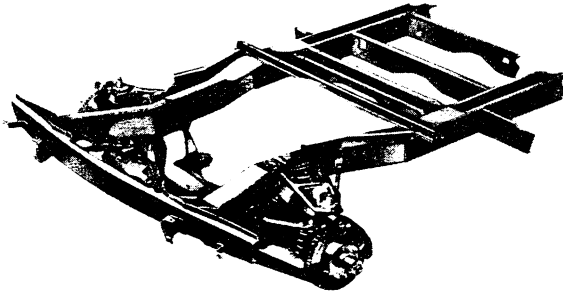
INDEPENDENT FRONT SUSPENSION



El Camino



C10-30; P10-30 Series



G10-30 Series

The independent front axle suspension uses stamped steel control arms, coil springs, forged steel steering knuckles, forged steel control arm shafts, a stamped steel cross-member, and ball joint pivot points.

→ FRONT COIL SPRINGS

CAPACITY		MODEL SERIES AVAILABILITY		SPECIFICATIONS		
lbs. each @ Ground	lbs. each @ Pad	Standard	Optional	Deflection Rate	Wire Diameter	Outside Diameter
750	NA	Vega Panel Express	—	325	.618	N/A
950	840	El Camino	—	275	.645	N/A
1310	1119	G10 (05)	—	675	.776	5.37
1450	1300	P10	—	675	.731	5.14
1450	1304	C10 (Blazer only)	—			
1462	1304	C10 (except Blazer)	—	930	.777	5.14
1500	1330	—	C10 (Blazer only)			
1550	1419	G10 (06, 36)	—	800	.776	5.14
1550	1417	G20	G10 (05)			
1550	1404	—	C10 (exc. 06, 16)	930	.777	5.37
1575	1404	—	C10 (06,16)			
1750	1576	P20	—	800	.758	
1750	1614	C20	—			
1750	1577	C30	—	930	.777	
1750	1390	G30	—			
1900	1765	—	C20	1209	.822	
1900	1727	—	C30			
2000	1825	P30 ex. Motor Home	—	1375	.849	
2000	1827	—	C30, P30			
2200	2025	P30 Motor Home	—	1209	.822	

VEGA PANEL EXPRESS AND EL CAMINO REAR AXLE

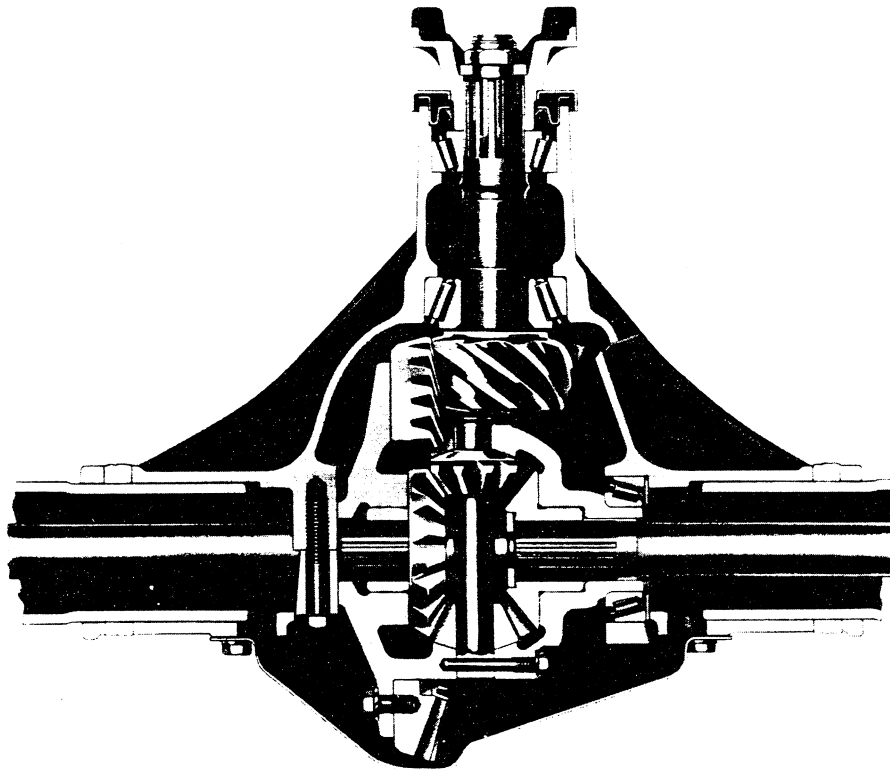


Illustration shows typical 2700 lbs capacity El Camino rear axle.

Vega Panel Express and El Camino models offer, as standard, a Salisbury-type rear axle. Hypoid gearing is used for quiet, durable differential operations.

Positraction is also available with all ratios as an option at extra cost.

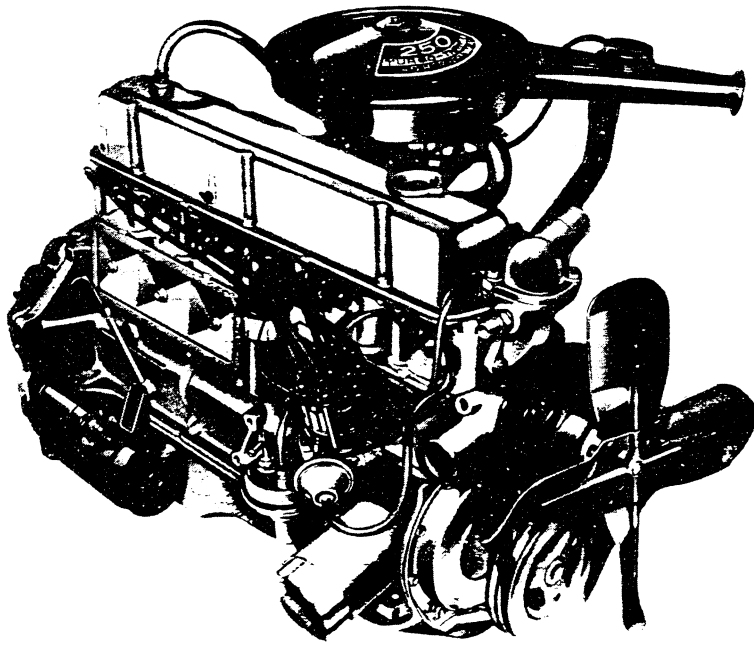
Specifications

For application and availability see Power Teams chart under Vega Panel Express or El Camino tabs.

Capacity	2400 lbs		2700 lbs			
Make	Chevrolet					
Pinion & Ring Gears:	Hypoid					
Type	Hypoid					
Ratios	2.92	3.36	2.73	3.08	3.31	3.36
Pinion, teeth	13	11	15	12	13	11
Ring gear, teeth	38	37	41	37	43	37
Ring gear pitch dia. (in)	6.50		8.125†		8.875	8.125
Differential:	Two-Pinion					
Type	Two-Pinion					
Axle Shaft:	Integral Shaft and Drive Flange					
Type	Integral Shaft and Drive Flange					
Housing:	N/A		3.0 x .22			
Section diameter and thickness (in)	N/A		3.0 x .22			

†8.875 ring gear for 2.73 ratio with 300-hp, 350 V8 engine and Turbo Hydra-matic transmission

TURBO-THRIFT 250 SIX



Applications

Standard: El Camino (13380)
Optional: None

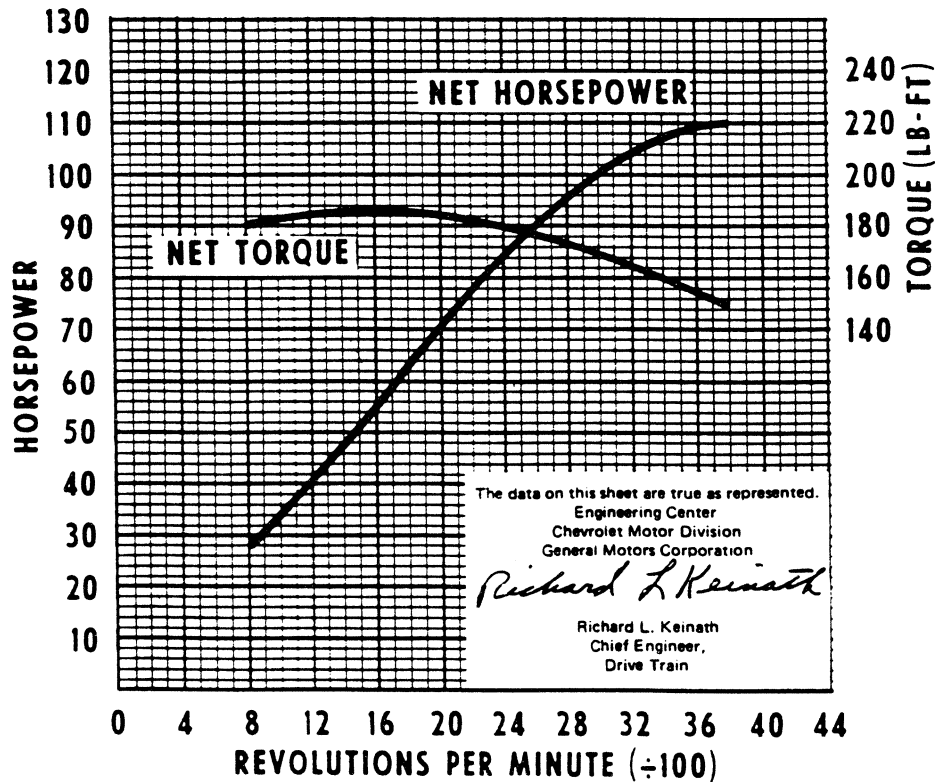
Basic Specifications

Engine type.....Valve-in-head
Piston displacement.....250 cu in
Bore & stroke (nominal).....3.875" x 3.53"
Compression ratio.....8.5 to 1
Carburetor type.....1-barrel

Test Procedures

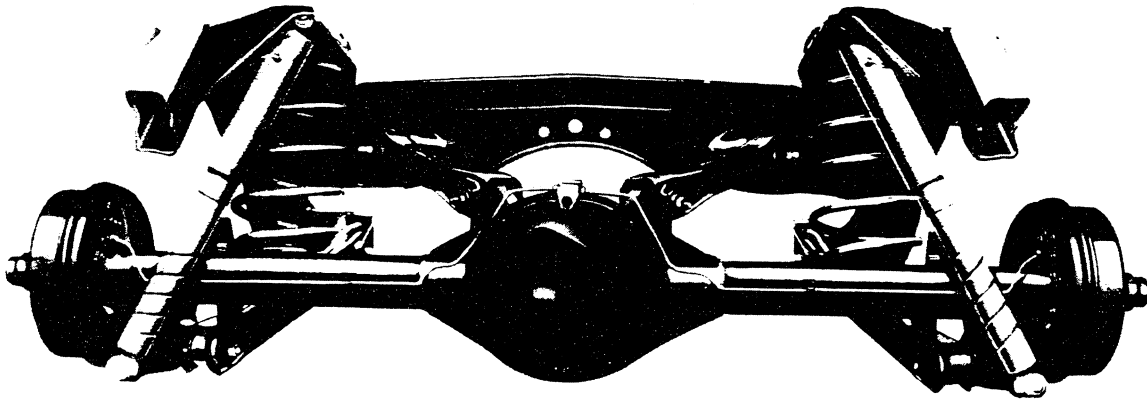
These curves represent full-throttle performance as obtained from a dynamometer test simulating actual operating conditions when the engine is in the vehicle, with ratings corrected to barometric pressure of 29.00" mercury and 85°F dry air.

SAE net horsepower (85°F).....110 @ 3800 rpm
SAE net torque, lb-ft (85°F).....185 @ 1600 rpm



REAR SUSPENSION

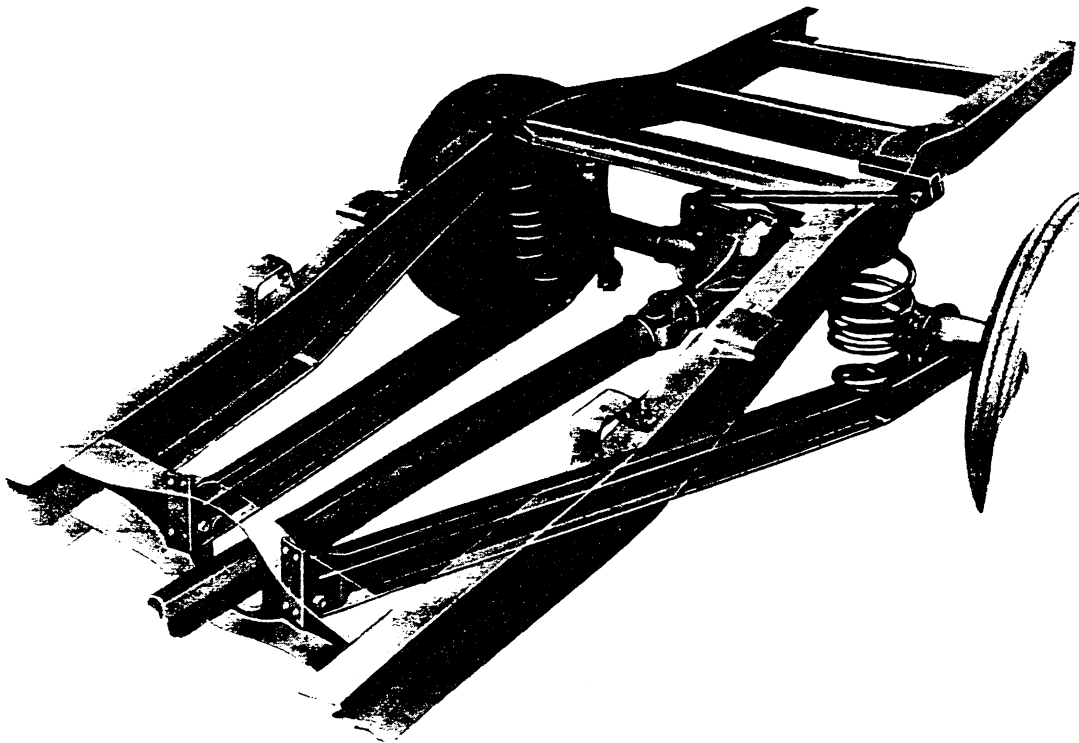
EL CAMINO MODELS



The 4-link rear suspension design of the El Camino models provides excellent ride and load-carrying characteristics. Two stamped channel-section lower control arms extend from brackets at each end of the axle housing to brackets at the start of the frame rail kick-up. Each control arm end pivots in compressed rubber bushings. Shorter stamped channel-section upper control

arms mount on brackets attached to the differential housing and extend diagonally outward to brackets on the intermediate Z-shaped frame crossmember to restrict lateral axle movement relative to the frame. Coil springs are positioned directly over the axle housing. Hydraulic direct double-acting air-booster-type shock absorbers are mounted diagonally behind the coil springs.

SERIES C10-20; P10



Fore-and-aft motion of the rear axle is controlled by two channel-section control arms pivoted at a forward frame crossmember. Lateral motion of the rear axle is restricted by a control arm which runs approximately parallel to the axle housing. One end of this arm is pivoted at the frame siderail, and the other end at

the axle attachment. The control arms permit axle motion, but maintain proper axle position. Spring action is performed by two-stage coil springs, providing an excellent ride when the vehicle is empty or lightly loaded—increasing in capacity as the load becomes greater.

250 & 292 SIX ENGINES

SPECIFICATIONS

	Turbo-Thrift	High Torque	
	250	250	292# 292■
Basic Description	Six-cylinder in-line; valve-in-head		
Displacement (cu in)	250		292
Bore & Stroke (in)	3.875 x 3.53		3.87 x 4.12
Compression Ratio	8.5:1		8.0:1
Firing Order	1 5 3 6 2 4		
SAE Net Horsepower @ rpm	110 @ 3800	110 @ 3800	125 @ 3600 135 @ 3800
SAE Net Torque (lb-ft) @ rpm	185 @ 1600	185 @ 1600	225 @ 2400 240 @ 2000
Air Cleaner	See model pages for type		
Camshaft	Cast alloy iron		
Valve Timing (in crankshaft degrees)			
Inlet Valve (excluding ramps)	Opens	16° BTC	33° BTC
	Closes	48° ABC	81° ABC
Exhaust Valve (excluding ramps)	Opens	46° 30' BBC	76° BBC
	Closes	17° 30' ATC	38° ATC
Inlet Duration w/o Ramp	244°		294°
Exhaust Duration w/o Ramp	244°		294°
Bearings	Steel-backed babbitt or copper lead alloy		Aluminum
Carburetor			
Type	1-Barrel downdraft		
Make	Rochester		
Venturi ID (in)	1.3125		1.625
Throttle Bore (in)	1.6875		1.750
Choke Control	Automatic*		
Connecting Rods			
Material	Forged steel		
Length (in)	5.70		6.76
Bearings	Steel-backed babbitt or copper lead alloy		Premium aluminum
Crankcase Ventilation	Closed positive		
Crankshaft			
Material	Nodular iron		
Number of Counterweights	12		
Main Journals (in)	Nos. 1-6—2.2983-2.2993		No. 7—2.2978-2.2988
Crankpin Journals (in)	1.999—2.000		2.099—2.100
Torsional Damper	Inertia, hysteresis		
Bearings	Sintered-copper nickel-backed babbitt on steel or copper lead alloy		Premium aluminum
Distributor	Delco-Remy; centrifugal & vacuum advance		
Fuel Filters			
Carburetor	Replaceable, pleated fiber element		
Fuel Tank	Plastic mesh screen		
Governor			
Availability	—	† Optional	
Make	—	† King-Seely	
Type	—	† Velocity	
Setting	Low Range	—	1800—3000 2200—3100
	High Range	—	2800—4000 2800—3900
Lubrication System	Full pressure		
Main Bearings	Direct pressure		
Camshaft Bearings	Direct pressure		
Timing Gear	Sprayed by nozzle		
Connecting Rods	Direct pressure		
Valve Mechanism	Pressure & gravity		
Cylinder Walls	Cross sprayed by pressurized jets		
Piston Pins	Cross sprayed by pressurized jets		

*Manual on CS40-50, SS50, TS50.

#Series 10-40

■Series 50

†Series 40-50

250 & 292 SIX ENGINES

SPECIFICATIONS

	Turbo-Thrift		High Torque	
	250		250	292# 292 ^m
Oil Capacity (qts)				
With filter change	4.5		5	6
W/o filter change		4		5
Oil Filter				
Standard	Full flow; throwaway type			
Capacity	1 pint		1 quart	
Optional	—			Replaceable element ●
Capacity (qts)	—			2
Oil Pump				
Type	Spur gear, distributor shaft driven			
Capacity (gpm)	4.3 @ 2000 rpm		4.5 to 6 @ 2000 rpm	
Normal Pressure (psi)	40 to 60 @ 2000 rpm			
Pistons				
Type	Autothermic			
Material	Cast aluminum alloy			
Skirt	Closed slipper			Full
Head	Sump with chamfer top edge			Sump
Piston Pins				
Type	Rod shrink fit to pin			
Material	Chromium-steel			
Piston Rings				
Compression Rings				
Number	2			
Type	Inside bevel			
Material	Cast alloy iron			
Oil Control Rings				
Number	1			
Type	Multi-piece			
Material	Steel			
Thermostat	Harrison or Dole; 195°			
Valve Train				
Type	Individually mounted rocker arms, push rod actuated			
Lifters	Hydraulic			
Rocker Arm Ratio	1.75:1			
Valve Guides	Integral with cylinder head			
Valve Lash	Zero			
Intake Valves				
Material	Alloy steel			
Head Diameter (in)	1.72			
Face Coating	None		Aluminized	
Seats	Machined in cylinder head			
Exhaust Valves				
Material	High alloy steel			
Head Diameter (in)	1.50			
Face Coating	None		Cobalt based alloy	
Seats	Machined in cylinder head; induction hardened			
Rotators	None		Yes	
Water Pump				
Type	Centrifugal			
Capacity (gpm)	24 @ 2000 rpm		60 @ 4000 rpm	70 @ 4400 rpm

●Series 50 only

#Series 10-30

■Series 40-50

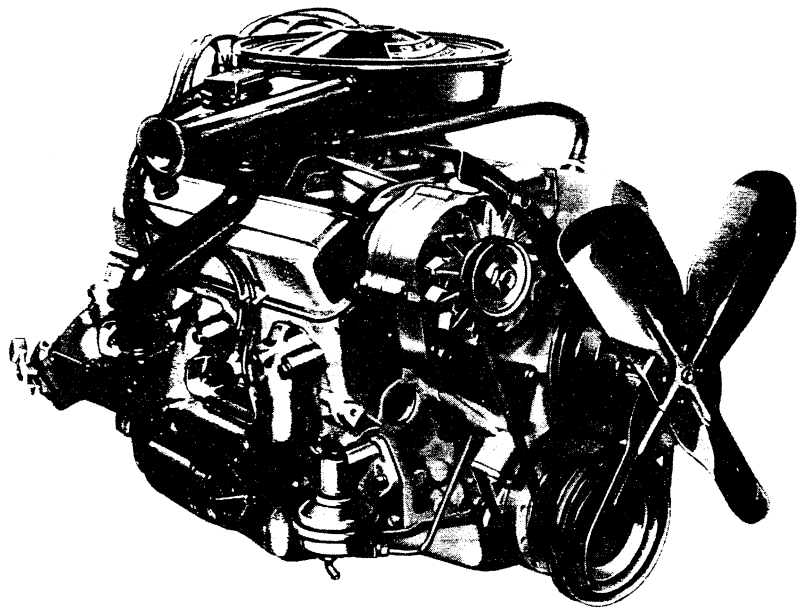
TURBO-FIRE 307 V8

Applications

Standard: El Camino (13480, 13680)
Optional: None

Basic Specifications

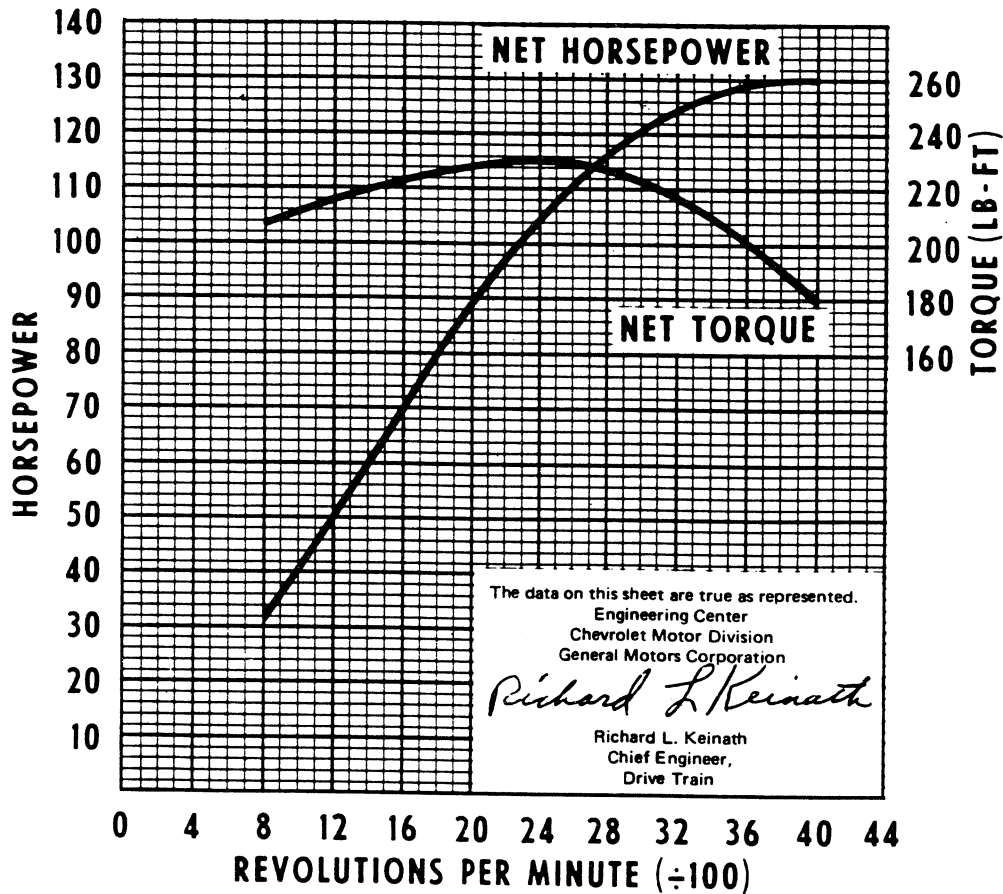
Engine type Valve-in-head
Piston displacement 307 cu in
Bore & stroke (nominal) 3 $\frac{7}{8}$ " x 3 $\frac{1}{4}$ "
Compression ratio 8.5:1
Carburetor type 2-barrel



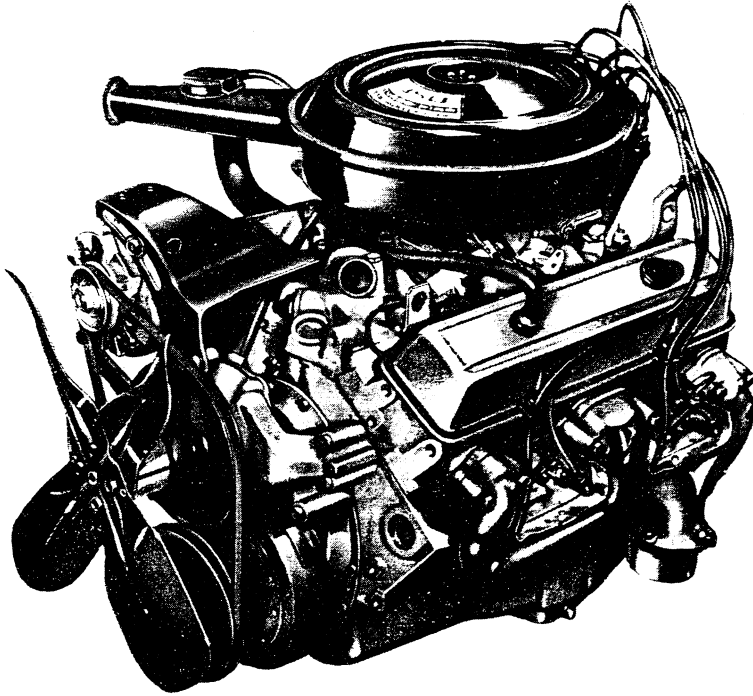
Test Procedures

These curves represent full-throttle performance as obtained from a dynamometer test simulating actual operating conditions when the engine is in the vehicle, with ratings corrected to barometric pressure of 29.00" mercury and 85°F dry air.

SAE net horsepower (85°F) 130 @ 4000 rpm
SAE net torque, lb-ft (85°F) 230 @ 2400 rpm



TURBO-FIRE 350 V8



Typical Engine Shown

Applications

Standard: None
 Optional: El Camino (13480, 13680)

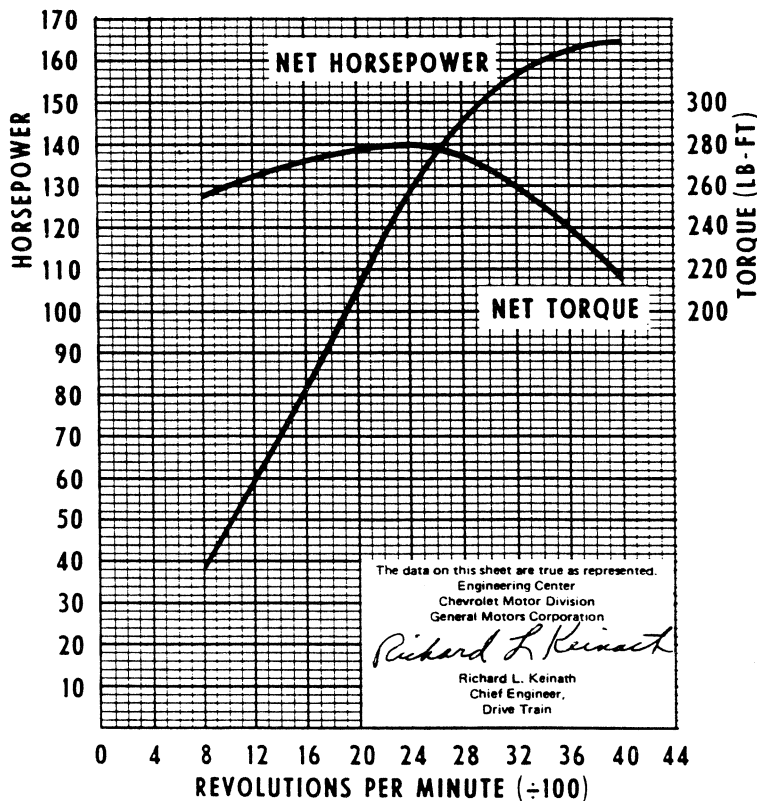
Basic Specifications

Engine type.....Valve-in-head
 Piston displacement.....350 cu in
 Bore & stroke (nominal).....4" x 3.48"
 Compression ratio.....8.5:1
 Carburetor type.....2-barrel

Test Procedures

These curves represent full-throttle performance as obtained from a dynamometer test simulating actual operating conditions when the engine is in the vehicle, with ratings corrected to barometric pressure of 29.00" mercury and 85°F dry air.

SAE net horsepower (85°F).....165 @ 4000 rpm
 SAE net torque, lb-ft (85°F).....280 @ 2400 rpm



Applications

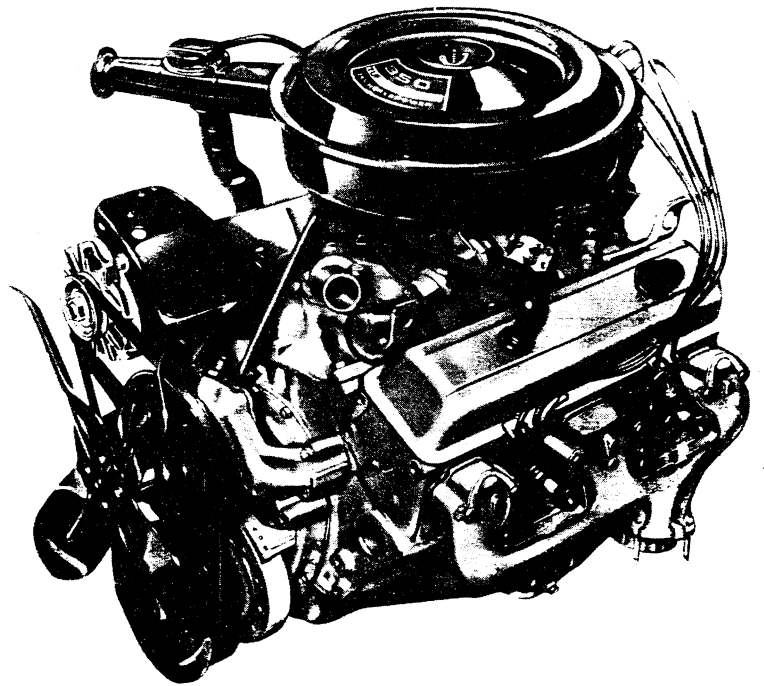
Standard: None
 Optional: El Camino (13480, 13680)

Basic Specifications

Engine type..... Valve-in-head
 Piston displacement..... 350 cu in
 Bore & stroke (nominal)..... 4" x 3.48"
 Compression ratio..... 8.5:1
 Carburetor type..... 4-barrel

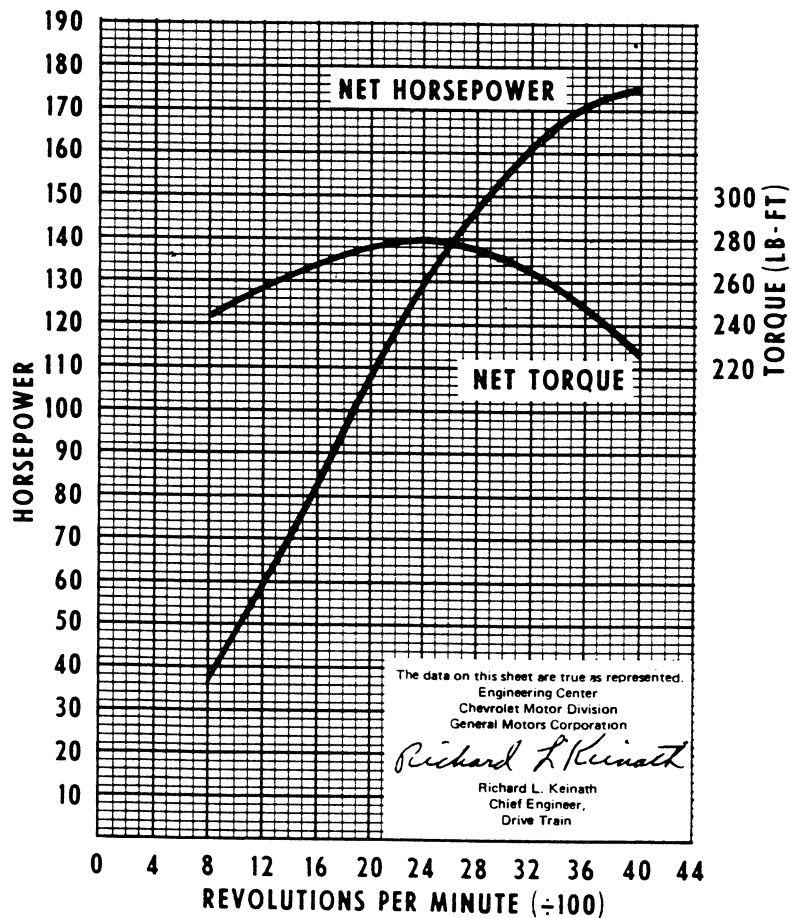
Test Procedures

These curves represent full-throttle performance as obtained from a dynamometer test simulating actual operating conditions when the engine is in the vehicle, with ratings corrected to barometric pressure of 29.00" mercury and 85°F dry air.



Typical Engine Shown

SAE net horsepower (85°F)..... 175 @ 4000 rpm
 SAE net torque, lb-ft (85°F)..... 280 @ 2400 rpm



307 V8 ENGINES

SPECIFICATIONS

	TURBO-FIRE		HIGH TORQUE	
	307 V8 (El Camino)		307 V8*	
				307 V8**
Basic Description		V8; valve-in-head		
Displacement (cu in)		307		
Bore & Stroke (in)		3.875 x 3.25		
Compression Ratio		8.5:1		
Firing Order		1-8-4-3-6-5-7-2		
SAE net Horsepower @ rpm		130 @ 4000	135 @ 4000	135 @ 4000
SAE net Torque (lb-ft) @ rpm		230 @ 2400	230 @ 2400	230 @ 2400
Air Cleaner		See model pages for type		
Camshaft				
Bearings		Steel-backed babbitt		
Valve Timing (in crankshaft degrees)				
Intake Valve (excluding ramps)		28° BTC		
Closes		72° ABC		
Exhaust Valve (excluding ramps)		78° BBC		
Closes		30° ATC		
Intake Duration w/o Ramp		280°		
Exhaust Duration w/o Ramp		288°		
Carburetor				
Type		2-Barrel		
Make		Rochester		
Venturi ID (in)		1.09		
Throttle Bore (in)		1.437	1.437	1.69
Choke Control		Automatic		
Connecting Rods				
Material		Drop-forged steel		
Length (in)		5.695—5.705		
Bearings		Copper lead alloy or micro-babbitt on steel		
Crankcase Ventilation		Closed positive		
Crankshaft				
Material		Cast nodular iron		
Number of Counterweights		6		
Main Journals (in)		2.45		
Crankpin Journals (in)		2.10		
Torsional Damper		Inertia; rubber mounted		
Bearings		Copper lead alloy or micro-babbitt aluminum		
Distributor		Delco-Remy; centrifugal & vacuum advance		
Fuel Filter				
Carburetor		Sintered bronze	Sintered bronze	Pleated fiber element
Fuel Tank		Plastic mesh strainer		
Governor				
Availability		None		
Lubrication System		Controlled full pressure		
Main Bearings		Direct pressure		
Camshaft Bearings		Direct pressure		
Timing Gear		Centrifugally sprayed		
Connecting Rods		Direct pressure		
Valve Mechanism		Pressure & gravity		
Cylinder Walls		Cross sprayed throw-off from rod bearing		
Piston Pins		Cross sprayed throw-off from rod bearing		

*All Series 10; Series 20 Suburbans.

**All Series 20-30 (except Series 20 Suburban).

SPECIFICATIONS

	TURBO-FIRE	HIGH TORQUE	
	307 V8 (El Camino)	307 V8 (Series 10)	307 V8 (Series 20-30)
Oil Capacity (qts)			
With filter change	4.5		5
W/o filter change		4	
Oil Filter			
Standard	Full flow; throwaway type		
Capacity	1 pint		1 quart
Optional	None		
Capacity (qts)	—		
Oil Pump			
Type	Spur gear; distributor shaft driven		
Capacity (gpm)	4.3 @ 2000 rpm		
Normal Pressure (psi)	30 @ 1180 rpm		
Pistons			
Material	Cast aluminum alloy		
Skirt	Open		
Head	Flat; notched		
Piston Pins			
Type	Rod shrink fit to pin		
Material	Chromium steel		
Piston Rings			
Compression Rings			
Number	2		
Type	Upper—barrel; lower—inside bevel, tapered face		
Material	Cast alloy iron		
Oil Control Ring			
Number	1		
Type	Multi-piece		
Material	Steel		
Thermostat	Harrison or Dole; 195°		
Valve Train			
Type	Individually mounted rocker arms, push rod actuated		
Lifters	Hydraulic		
Rocker Arm Ratio	1.50:1		
Valve Guides	Integral with cylinder head		
Valve Lash	Zero		
Intake Valves			
Material	Alloy steel		
Diameter (in)	1.715—1.725		
Face Coating	None		
Seats	Machined in cylinder head		
Exhaust Valves			
Material	High alloy steel		
Diameter (in)	1.495—1.505		
Face Coating	Aluminized		Stellite
Seats	Machined in cylinder head; induction hardened		
Rotators	Yes		
Water Pump			
Type	Centrifugal		
Capacity (gpm)	25 @ 2000 rpm		52 @ 4000 rpm

350 V8 ENGINES

SPECIFICATIONS

	Turbo-Fire		High Torque	
	350 V8*	350 V8*	350 V8■	350 V8#
Basic Description	V8; valve in head			
Displacement (cu in)	350			
Bore & Stroke (in)	4.0 x 3.48			
Compression Ratio	8.5:1	8.5:1	8.0:1	8.5:1
Firing Order	1-8-4-3-6-5-7-2			
SAE Net Horsepower @ rpm	165 @ 4000	175 @ 4000	155 @ 4000	175 @ 4000
SAE Net Torque (lb-ft) @ rpm	280 @ 2400	280 @ 2400	265 @ 2400	290 @ 2400
Air Cleaner	See model pages for type			
Camshaft				
Bearings	Steel-backed babbitt			
Valve Timing (in crankshaft degrees)				
Intake Valve Opens	28° BTC			
(excluding ramps) Closes	72° ABC			
Exhaust Valve Opens	78° BBC			
(excluding ramps) Closes	30° ATC			
Intake Duration w/o Ramp	280°			
Exhaust Duration w/o Ramp	288°			
Carburetor				
Type	2-barrel	4-barrel	2-barrel	4-barrel
Make	Rochester			
Venturi ID (in)	1.09			
Throttle Bore (in)	1.69	Pri 1.38; sec 2.25	1.68	Pri 1.38; sec 2.25
Choke Control	Automatic		Manual	Automatic
Connecting Rods				
Material	Drop-forged Steel			
Length (in)	~5.695—5.705			
Bearings	Premium aluminum			
Crankcase Ventilation	Closed positive			
Crankshaft				
Material	Cast nodular iron		Forged steel	Cast nodular iron
Number of Counterweights	6			
Main Journals (in)	2.45			
Crankpin Journals (in)	2.10			
Torsional Damper	Inertia; rubber mounted			
Bearings	Upper—Micro-babbitt or copper lead; Lower—premium aluminum			
Distributor	Delco-Remy; centrifugal & vacuum advance			
Fuel Filter				
Carburetor	Pleated fiber element			
Fuel Tank	Plastic strainer			
In-line	N.A.		Optional†	N.A.
Governor				
Availability			50 Series	—
Make			Delco-Remy	—
Type			Vacuum spinner	—
Setting			4000 rpm	—
Lubrication System	Controlled full pressure			
Main Bearings	Direct pressure			
Camshaft Bearings	Direct pressure			
Timing Gear	Centrifugally sprayed			
Connecting Rods	Direct pressure			
Valve Mechanism	Pressure & gravity			
Cylinder Walls	Cross sprayed throw-off from rod bearing			
Piston Pins	Cross sprayed throw-off from rod bearing			
Oil Capacity (qts)				
With filter change	4.5		6	5
W/o filter change	4		5	4

*El Camino only ■Series 40-50 #Lt Duty—LS9; standard on GE20-30 and PE30 Motor Home Chassis

†On 40 Series and Standard on 50 Series

350 V8 ENGINES

SPECIFICATIONS

	Turbo-Fire		High Torque	
	350 V8*	350 V8*	350 V8■	350 V8#
Oil Filter	Throwaway		Full flow; replaceable element†	
Capacity (qts)	1/2		One◆	
Oil Pump	Spur gear; distributor shaft driven			
Type	Spur gear; distributor shaft driven			
Capacity (gpm)	4.3 @ 2000 rpm			
Normal Pressure (psi)	50-65 @ 2000 rpm			
Pistons	Cast aluminum alloy			
Material	Cast aluminum alloy			
Skirt	Slipper		Closed	
Head	Sump notched	Sump		Sump notched
Piston Pins	Rod shrink fit to pin			
Type	Rod shrink fit to pin			
Material	Chromium steel			
Piston Rings	Cast iron alloy			
Compression Rings	Cast iron alloy			
Number	2			
Type	Upper—barrel; lower—inside bevel			
Material	Cast iron alloy			
Oil Control Ring	Cast iron alloy			
Number	1			
Type	Multi-piece			
Material	Steel			
Thermostat	Harrison or Duke; 195°			
Valve Train	Individually mounted rocker arms, push rod actuated			
Type	Individually mounted rocker arms, push rod actuated			
Lifters	Hydraulic			
Rocker Arm Ratio	1.50:1			
Valve Guides	Integral with cylinder head			
Valve Lash	Zero			
Intake Valves	Alloy steel			
Material	Alloy steel			
Diameter (in)	1.94		1.72††	1.94**
Face Coatings	None	Aluminized		None
Seats	Machined in cylinder head			
Exhaust Valves	High alloy steel			
Material	High alloy steel	Stellite	High alloy steel	High alloy steel
Diameter (in)	1.50			
Face Coating	Aluminized	None		Stellite †
Seats	Machined in cyl. head; induction hardened	Inserts (50 Series)		Machined in cyl. head; induction hardened
Rotators	Yes	Yes		Yes
Water Pump	Centrifugal			
Type	Centrifugal			
Capacity (gpm)	25 @ 2000 rpm		52 @ 4000 rpm	

- ◆Two quart on Series 50 ■Series 40-50 †Lt Duty-LS9; standard on GE20-30 and PE30 Motor Home Chassis
†On 50 Series. Throwaway on 40 Series *El Camino only
**On all Series 10; and on Series 20 Suburbans, Series 20-30 Sportvans, and Series 20 Chevy Vans.
†Aluminized on Series 10; and on Series 20 Suburbans, Series 20-30 Sportvans, and Series 20 Chevy Vans.
††Also on Series 20-30 Pickups, Chassis-Cabs, Step-Vans, and FC Chassis; Series 30 Chevy Vans.

TURBO-JET 400 V8

Applications

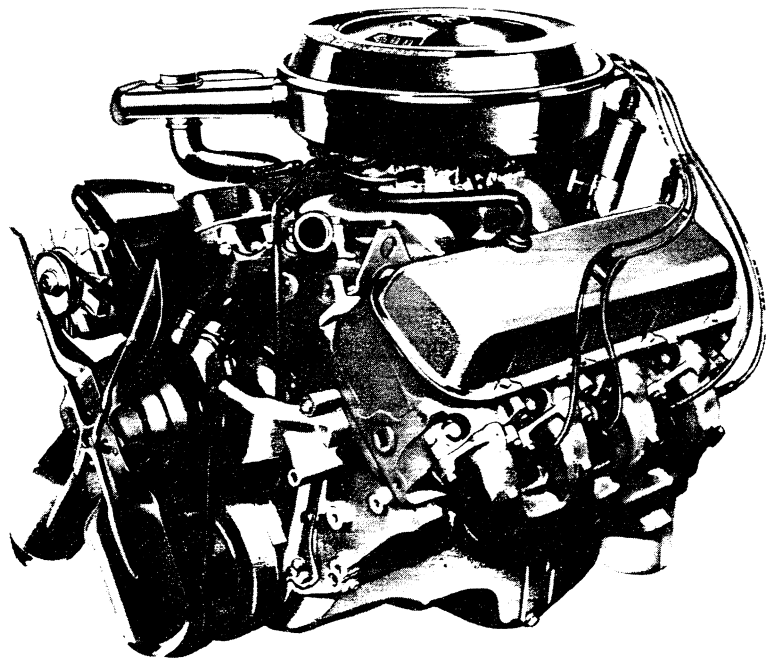
Standard: None
Optional: 13680

Basic Specifications

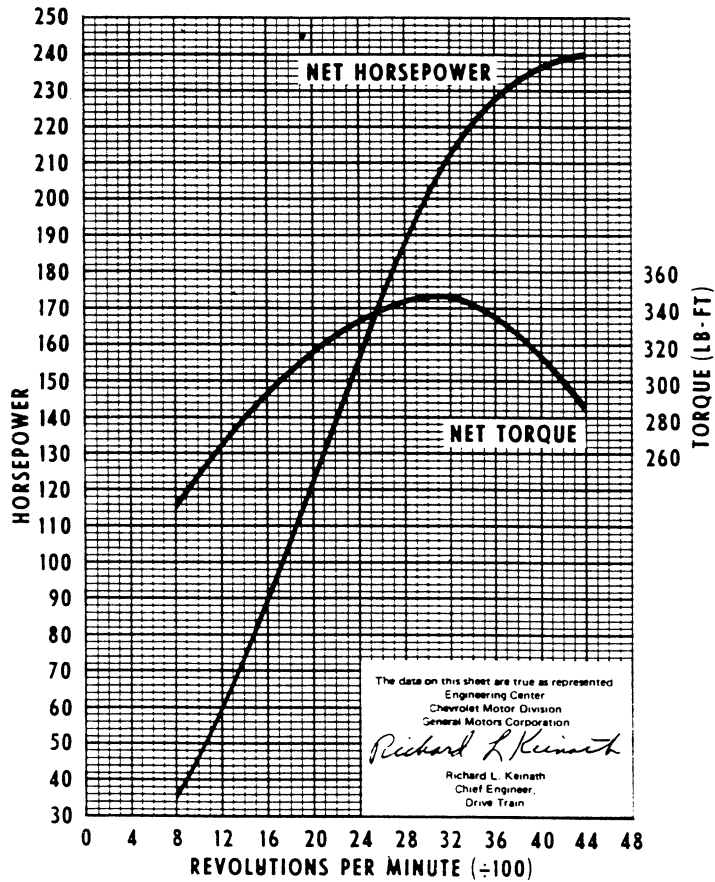
Engine type.....Valve-in-head
Piston displacement.....402 cu in
Bore & stroke (nominal).....4.126" x 3.76"
Compression ratio.....8.5:1
Carburetor type.....4-barrel

Test Procedures

These curves represent full-throttle performance as obtained from a dynamometer test simulating actual operating conditions when the engine is in the vehicle, with ratings corrected to barometric pressure of 29.00" mercury and 85°F dry air.



SAE net horsepower (85°F).....240 @ 4400 rpm
SAE net torque, lb-ft (85°F).....345 @ 3200 rpm



Applications

Standard: None

Optional: El Camino (13680)

Basic Specifications

Engine type..... Valve-in-head

Piston displacement..... 454 cu in

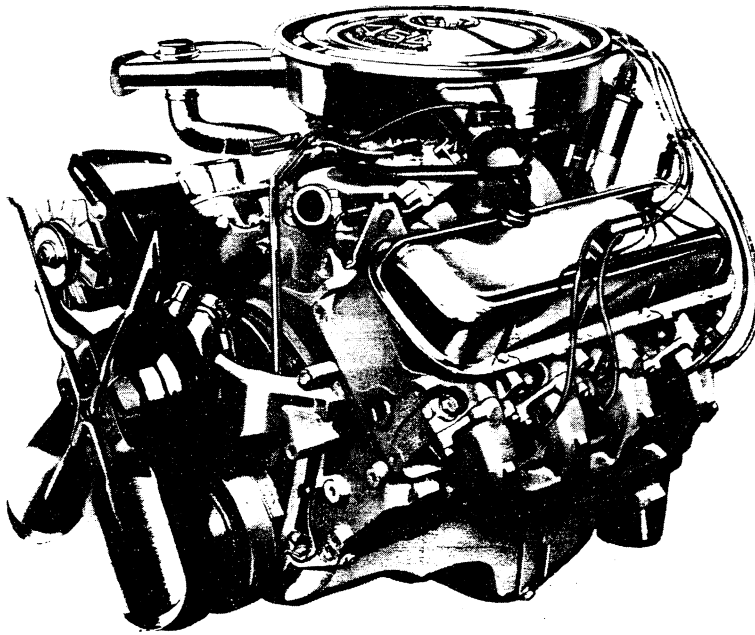
Bore & stroke (nominal)..... 4.251" x 4.00"

Compression ratio..... 8.5:1

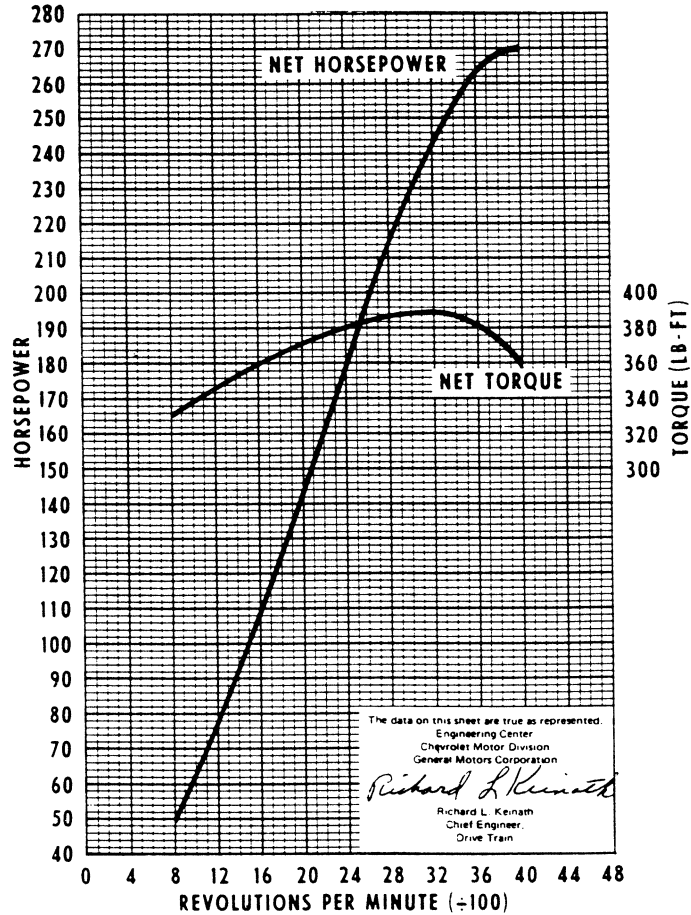
Carburetor type..... 4-barrel

Test Procedures

These curves represent full-throttle performance as obtained from a dynamometer test simulating actual operating conditions when the engine is in the vehicle, with ratings corrected to barometric pressure of 29.00" mercury and 85°F dry air.



SAE net horsepower (85°F)..... 270 @ 4000 rpm
 SAE net torque, lb-ft (85°F)..... 390 @ 3200 rpm



400 & 454 V8 ENGINES

SPECIFICATIONS

	TURBO-JET		
	400 V8	454 V8	
Basic Description	V8; valve-in-head		
Displacement (cu in)	402	454	
Bore & Stroke (in)	4.126 x 3.76	4.251 x 4.00	
Compression Ratio	8.5:1		
Firing Order	1-8-4-3-6-5-7-2		
SAE Net Horsepower @ rpm	240 @ 4400	270 @ 4000	
SAE Net Torque (lb-ft) @ rpm	345 @ 3200	390 @ 3200	
Air Cleaner	Thermostatically controlled; oil wetted paper element		
Camshaft			
Bearings	Steel-backed babbitt		
Intake Valve	Opens	30° BTC	56° BTC
	Closes	70° ABC	114° ABC
Exhaust Valve	Opens	77° BBC	110° BBC
	Closes	61° ATC	62° ATC
Intake Duration w/o Ramp	280°	350°	
Exhaust Duration w/o Ramp	318°	352°	
Carburetor			
Type	4-Barrel		
Make	Rochester Quadrajets		
Venturi ID (in)	1.09		
Throttle Bore (in)	1.38 Primary; 2.25 Secondary		
Choke Control	Automatic		
Connecting Rods			
Material	Drop forged steel		
Length (in)	6.130-6.140		
Bearings	Premium aluminum		
Crankcase Ventilation	Closed positive		
Crankshaft			
Material	Cast nodular iron	Forged steel	
Number of Counterweights	6		
Main Journals (in)	2.75 (Nominal)		
Crankpin Journals (in)	2.199-2.20		
Torsional Damper	Inertia; rubber mounted		
Bearings	Steel with Premium aluminum or copper-lead insert		
Distributor	Delco-Remy; centrifugal & vacuum advance		
Fuel Filter			
Carburetor	Pleated fiber element		
Fuel Tank	Mesh strainer		
Lubrication System	Controlled full pressure		
Main Bearings	Direct pressure		
Camshaft Bearings	Direct pressure		
Timing Gear	Centrifugally sprayed		
Connecting Rods	Direct pressure		
Valve Mechanism	Pressure & gravity		
Cylinder Walls	Cross sprayed by pressurized jets		
Piston Pins	Splash		

400 & 454 V8 ENGINES

SPECIFICATIONS

	TURBO-JET	
	400 V8	454 V8
Oil Capacity		
With filter change	4½	
W/o filter change	4	
Oil Filter		
Standard	Full flow; throwaway type	
Capacity (qts)	½	
Oil Pump		
Type	Spur gear; distributor shaft driven	
Normal Pressure (psi)	40 @ 2000 rpm	
Pistons		
Material	Cast aluminum alloy	
Skirt	Slipper	
Head	Domed	Flat
Piston Pins		
Type	Rod shrink fit to pin	
Material	Chromium steel	
Piston Rings		
Compression Rings		
Number	2	
Type	Upper—barrel face; lower—taper face	
Material	Cast alloy iron	
Oil Control Rings		
Number	1	
Type	Multi-piece	
Material	Steel	
Thermostat	Harrison; 195°	
Valve Train		
Type	Individually mounted rocker arms, push rod actuated	
Lifters	Hydraulic	
Rocker Arm Ratio	1.70:1	
Valve Guides	Pressed-in; cast alloy iron	
Valve Lash	Zero	
Intake Valves		
Material	Alloy steel	
Head Diameter (in)	2.060-2.070	
Face Coating	Aluminized	
Seats	Machined in cylinder head	
Exhaust Valves		
Material	High alloy steel	
Head Diameter (in)	1.715-1.725	
Face Coating	Aluminized	
Seats	Machined in cylinder head; induction hardened	
Water Pump		
Type	Centrifugal	
Capacity (gpm)	23 @ 2000 rpm	

EL CAMINO TRANSMISSIONS

VEGA PANEL EXPRESS

3-SPEED TRANSMISSIONS

Type	Chevrolet 3-Speed	Chevrolet 3-Speed	Chevrolet 3-Speed	Chevrolet 3-Speed
Applications	140 Four	250 Six; 307 V8	350 V8 (175 HP)	402 V8
Synchronized Speeds	All forward			
Gear Ratios:				
First	3.24	2.85	2.54	2.42
Second	1.68	1.68	1.50	1.58
Third	Direct	Direct	Direct	Direct
Reverse	3.47	2.95	2.63	2.41
Gears:				
Type	Helical			
Material	Forged steel; hardened			
Gearshift Control:				
Type	Column			
Location				

4-SPEED TRANSMISSIONS

Type	Chevrolet 4-Speed	Chevrolet 4-Speed	Chevrolet 4-Speed	Chevrolet 4-Speed
Applications	140 Four	350 V8 (165 HP) (175 HP)	402 V8	454 V8
Synchronized Speeds	All forward			
Gear Ratios:				
First	3.43	2.54	2.52	2.20
Second	2.16	1.80	1.88	1.64
Third	1.37	1.44	1.46	1.27
Fourth	Direct	Direct	Direct	Direct
Reverse	3.32	2.54	2.59	2.26
Gears:				
Type	Helical			
Material	Forged steel; hardened			
Gearshift Control:				
Type	Manual direct			
Location	Floor*			

AUTOMATIC TRANSMISSIONS

Type	Chevrolet Powerglide		Turbo Hydra-matic		
Applications	140 Four	250 Six; 307 V8	140 Four	402 V8; 454 V8	250 Six; 307 V8; 350 V8
Drive (Maximum)	3.82:1	3.82:1	5.29:1	5.21:1	5.29:1
Cooling	Water				

*Console optional

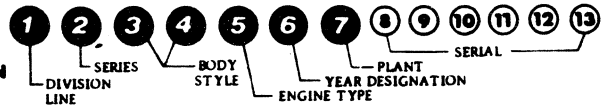
General Motors

Passenger Car 1972

VIN System



1972 Passenger Car V.I.N. Data



EXAMPLE ON OTHER SIDE

1	GM DIVISION
1	Chevrolet
2	Pontiac
3	Oldsmobile
4	Buick
5	GMC Truck
6	Cadillac
7	GM of Canada

2	SERIES
CHEVROLET	
X	Nova
Q	Camaro
B	Chevelle Wagon
C	Chevelle
Q	Chevelle Malibu
M	Chevelle Concours
N	Monte Carlo
V	Vega
K	Biscayne
L	Bel Air
M	Impala
N	Caprice
Z	Corvette

2	SERIES
PONTIAC	
L	Laurentian
L	Catalina
M	Parisienne
N	Bonneville
P	Grandville
B	LeMans
G	LeMans Luxury
K	Grand Prix
S	Firebird Standard
T	Firebird Esprit
U	Firebird Formula
V	Firebird Trans Am
V	Ventura

2	SERIES
OLDSMOBILE	
B	F85
F	Cutlass H.T.
G	Cutlass
J	Cutlass Supreme
K	Vista Cruiser
L	Delta
M	Delta 88
N	Custom Cruiser
U	Ninety-Eight
V	Ninety-Eight Luxury
Y	Toronado

2	SERIES
BUICK	
D	Skylark
H	Skylark Custom
G	GS
F	Sportwagon
L	LeSabre
M	LeSabre Custom
N	Estate Wagon
P	Centurion
U	Electra
V	Electra Custom
Y	Riviera

2	SERIES
GM TRUCK & COACH	
C	Sprint
D	Sprint Custom

2	SERIES
CADILLAC	
C	Calais
D	De Ville
B	Fleetwood Brougham
F	Fleetwood 75
L	Fleetwood Eldorado

3	4	BODY STYLES
05		Panel-2 Door
11		Sedan-2 Door-Pillar
15		Sta. Wag.-2 Door-2 Seat
23		Sedan-4 Dr.-Aux. Seat
27		Coupe-2 Door-Pillar
33		Sed.-4 Dr.-Aux. St.-Ctr. Pt.
35		Sta. Wag.-4 Door-2 Seat
36		Sta. Wag.-4 Dr.-2 St.-2 Way Tg.
37		Coupe-2 Door-Hardtop
39		Sedan-4 Door-Hardtop
46		Short Sill Cowl
45		Sta. Wag.-4 Dr.-3 Seat
47		Coupe-2 Door-Hardtop
48		Sed.-4 Dr. Ht. Notch-Back
56		Sta. Wag.-4 Dr.-2 St.-2 Way Tg.
57		Coupe-2 Door Hardtop
66		Sta. Wag.-4 Dr.-3 St.-2 Way Tg.
67		Coupe-2 Dr.-Convertible
68		Sedan-4 Door-Pillar
77		Coupe-2 Door-Pillar
86		Sedan-Pick-Up-2 Door
87		Coupe-2 Door-Hardtop
90		Short Sill Cowl

5	ENGINE CODE				
	C.I.B.	N.M.P.	CRB.	EX.	
B	140	80	1B	S	1
B	140	90	2B	S	1
D	250	110	1B	S	1,25,7
F	307	130	2B	S	1,25,7
H	350	165	2B	S	1,25,7
H	350	160	2B	S	3
H	350	155	2B	S	4
J	350	175	4B	S	1,5
J	350	180	4B	S	1,5
J	350	170	2B	D	3
K	350	200	4B	D	1
K	350	180	4B	S	3
K	350	195	4B	D	4
L	350	255	4B	D	1
R	400	170	2B	S	1
R	400	175	2B	S	2,7
R	472	220	4B	S	6
S	402	210	4B	S	2,1
S	400	200	4B	S	2,7
S	500	235	4B	S	6
U	402	240	4B	D	1,5
U	455	200	2B	D	2
U	455	250	4B	D	3
U	455	255	4B	D	4
V	454	230	4B	S	1
V	455	185	2B	S	2,7
V	455	270	4B	D	3
V	455	265	4B	D	4
W	454	270	4B	D	1,5
W	455	220	4B	S	2,7
W	455	250	4B	D	3
W	455	275	4B	D	4
M	350	160	2B	S	2
M	350	200	4B	D	3
N	350	175	2B	D	2
P	400	200	2B	D	2
T	400	250	4B	D	2
T	455	225	4B	S	3
T	455	230	4B	S	4
Y	455	250	4B	D	2
X	455	300	4B	D	2,3

7	PLANTS	
A	LAK WD GEO.	0 NOT USED
B	BALT MLND.	P PONT MICH.
C	S GATE CAL.	Q DET MICH.
D	DOR VL GEO.	R ARLTN TEX.
E	LINDN N.J.	S ST LOS MISS.
F	FLINT MICH.	T TRY TN N.Y.
G	FRHM MASS.	U LDS TN OHIO
H	FLINT MICH.	V PONT MICH.
I	NOT USED	W WILRN MICH.
J	JANVL WIS.	X F FAX KAN.
K	LEEDS MISR.	Y WILMG DEL.
L	V NUYS CAL.	Z FREMT CAL.
M	LANSG MICH.	1 OSHW ONT.
N	NORWD OHIO	2 S. THRS QUE.

