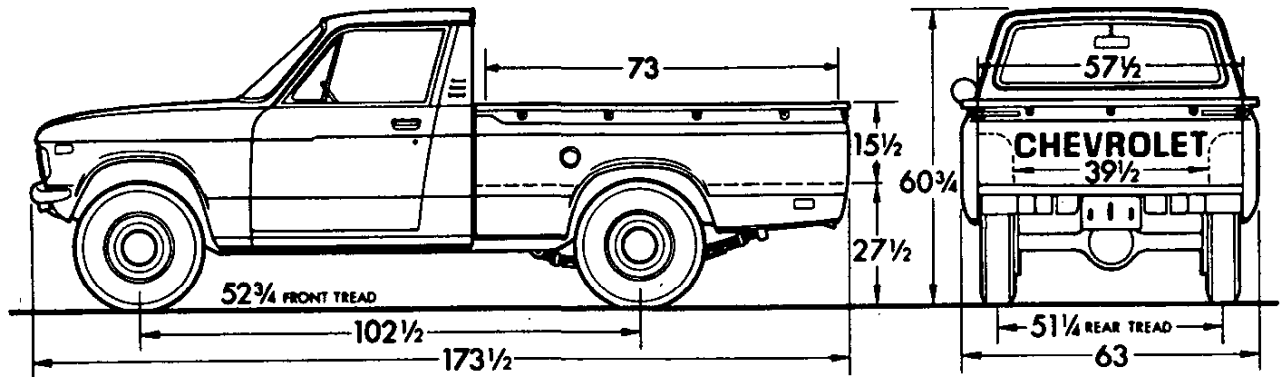


LUV PICKUP (Series II)



Model	Engine No. Cyl.	Curb Weight (lb)			Model Weights (lb)*			Ground Clearance (in)★
		Front	Rear	Total	Front	Rear	Total†	Minimum
CL10503	4	1335	1115	2450	1507	1243	2900	8.1

★ Dimensions with standard equipment, unloaded

* Model Weights include curb weight plus occupants (standard seating capacity x 150 lbs.)

† Total also includes 150 lbs minimum payload allowance

GVW SELECTOR

‡Maximum Ratings			Minimum Equipment Required for GVW Rating		
GVW Rating (lb)	★GAWR (lb)		Tires, Front	Tires, Rear	Chassis Equipment
	Front	Rear			
3950	1600	2650	6.00-14C (6PR)	6.00-14C (6PR)	Standard

‡GAWR's shown are the maximum for each axle. When ordering a truck, the total of the actual weight on both front and rear axles cannot exceed the total GVW rating.

★GAWR—Gross Axle Weight Rating



1
2



LUV PICKUP

(Series II)

STANDARD SPECIFICATIONS

(See Blue Tab Section for Specification Details)

Engine	
Base equip—4 cyl.	110.8 cu. in. (1817 cc)
Clutch	8" O. D. (Hydraulically operated)
Air Filter	Wet-paper element; replaceable
Oil Filter	Throwaway type
Exhaust System	Single; outside zinc-plated
Exhaust Control	Emission Control Equipment
Suspension, Front	Independent; Torsion bar
Capacity	1600 lb.
Torsion Bars @ Ground	800 lb. ea.
Stabilizer	Connected to each side
Shock Absorbers	Direct, double acting; 1" dia.
Suspension/Axle, Rear	Leaf springs/Hypoid
Axle Capacity	3500 lbs.
Axle Ratio	4.56
Springs @ ground	1325 lb. ea.
Shock Absorbers	Direct, double acting; 1" dia.
Brakes	Hydraulic; Self-adjusting
Front	Drum; 10" Dia.
Rear	Drum; 10" Dia.
Booster	Bendix; vacuum
Parking	Cable to rear wheels
Electrical	
Battery	12 volt; 50 amp. hr.
Generator (Hitachi)	30 amp.
Frame	Box section; ladder type
Fuel Tank (nominal capacity)	10 gal.
Steering	Recirculating ball
Transmission	Fully synchronized 4-speed
Shift location	Floor
Tires (tube type)	(5) 6.00-14/C (6pr)
Tire Carrier, Spare	Winch/chain unit under pickup box
Wheels	(5) Disc; 14" x 4" J



LUV PICKUP ✓(SERIES II) STANDARD VEHICLE

Prices shown are effective with initial shipments of Series II vehicles.

Description	Model Number	Body Ordering Code	Wheel-base	Factory D & H †	List Price	Mfr's Spt'd Retail Price★	Desti-nation Charge & Group Number	Total
4-Cylinder—Engine Ordering Code L10								
275-hp Engine Pickup.....	CL10503	E63	102.4"	\$11.10	\$2184.00	\$2195.10	\$0	

★Manufacturer's Suggested Retail Prices do not include state and local taxes, license fees, or optional equipment.
 ■Available for registration in the State of California when California Emission Equipment is ordered.

OPTIONAL EQUIPMENT

Prices shown are effective with initial shipments of Series II vehicles.

Description	Option Number	Factory D & H †	List Price	Mfr's Suggested Retail Delivered Price◇
Air Conditioning: Available only when Decor Package, white stripe tires and light blue, orange or yellow exterior color is ordered.....				
	C60	—	\$299.00	\$299.00
Bumpers, Rear:				
Chromed, LH and RH.....	VF1	—	29.95	29.95
Rear Step. Not available when chromed bumpers are ordered.....	V43	—	49.00	49.00
California Emission Equipment: Dealer Note—Items shown below, priced as options indicated, must be ordered for vehicles destined for registration in the State of California.				
California Emission Certification Label.....	VJ9	—	N.C.	N.C.
California Assembly Line Emission Test.....	YA7	—	15.00	15.00
Decor Package: Includes belt line and roof drip moldings and wheel covers.....				
	YA1	—	35.00	35.00
Radio: AM. Pushbutton.....	U63	—	59.95	59.95
Tires: (5) 6.00-14/C tubeless, original equipment highway white stripe.....	QKD	.10	26.00	26.10

† D&H amounts reflect provision for pass through of tire weight tax imposed on manufacturer or importer of tires.
 ◇ State and local taxes not included.



LUV PICKUP

√ (Series II)

INTERIOR AND EXTERIOR SELECTION CHARTS

INTERIOR TYPE	Seat Type	Black	Blue
Standard Interior	2-Man Bench	605	614
EXTERIOR COLOR			
SOLID	OPTION NUMBER		
Blue, Light	529		X
Blue, Dark	531		X
Orange	597	X	
Red	512	X	
White	507	X	X
Yellow	502	X	

POWER TEAMS

ENGINE, TRANSMISSION AND REAR AXLE COMBINATIONS

ENGINE	TRANSMISSION	REAR AXLE RATIO
4-Cylinder 2-barrel carburetor 75 Net HP @ 5000 RPM* 88-lb-ft net torque @ 3000 RPM* Single Exhaust	4-Speed	4.56

*Engine ratings shown are S.A.E. net ratings @ 85°F.



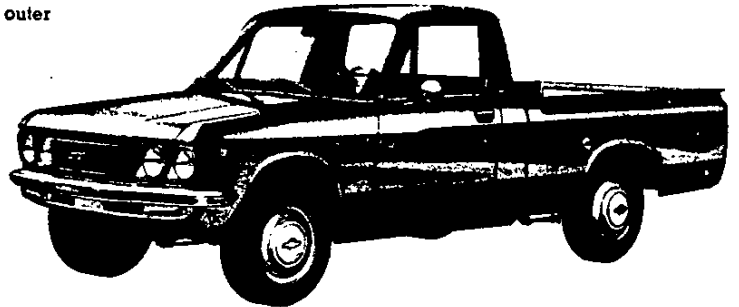
LUV PICKUP

(Series II)
STANDARD MODEL

The Standard Model Includes the Following Items as Standard Equipment

EXTERIOR FEATURES

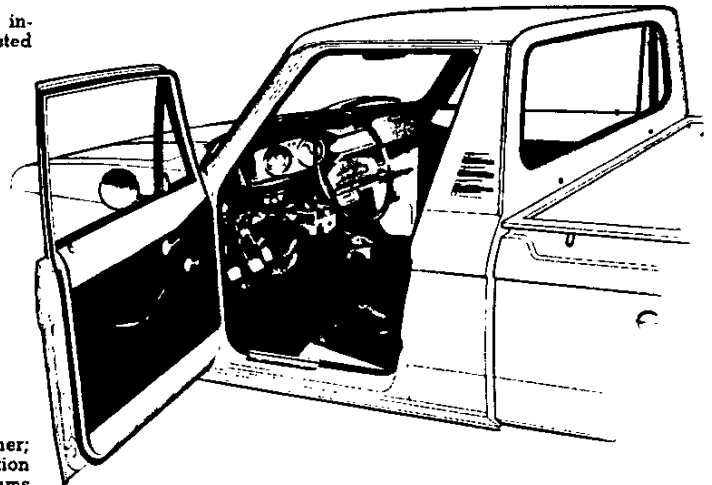
- **Bright appearance items:**
 - Chevrolet Emblem: Mounted center of grille with bright outer edge and ochre paint fill
 - LUV/Bowtie nameplates: Side of each front fender
 - Door entry handles
 - Chrome front bumper
 - Door lock cylinder assemblies
 - Grille: Bright upper and lower moldings
 - Headlamp bezel bright trim
 - Chrome LH exterior mirror
 - Ventipane frames
 - Chrome fuel filler cap
- **Color:** See exterior-interior color selection chart
- **Lights:**
 - Back-up light; double rear, inboard
 - Combination parking/direction/hazard: two front
 - Combination tail/stop/hazard: two rear outboard w/red lenses and reflectors
 - Direction Signal lights; two rear middle w/amber lenses
 - Headlamps: Four
 - License Plate: single rear
 - Side marker lights: two front and two rear
- **Mirror:** LH fixed arm with round head
- **Hub caps:** Painted white with ochre and black paint fill in Chevrolet emblem
- **Lettering "CHEVROLET" Tailgate:** Painted black
- **Pickup Box:** All steel; 11 cargo hold-down eyes with 4 on outside edge of each side top rail and 3 on outside edge of tailgate top rail



- **Spare tire carrier:** Mounted under frame in back with mechanical winch and chain for raising and lowering tire assembly
- **Tools:** Mechanical jack, combination jack handle/wheel nut wrench/hub cap tool, and spare tire winch handle
- **Wheels:** Painted silver

INTERIOR FEATURES

- **Air Vents:** RH & LH instrument panel side and foot vents; individually controlled. Also flow-thru with air being exhausted through outlets located in upper rear quarter panels
- **Arm Rests:** RH & LH
- **Ash Tray:** Lighted
- **Colors:**
 - Painted interior: Same as exterior color choice
 - Trim—Color choice of black or blue
- **Door Locks:** Inside pushbutton lock/release
- **Door Seals:** Constant-section sponge rubber
- **Door trim panels:** Embossed vinyl
- **Floor Mat:** Molded black vinyl
- **Instruments:**
 - Gauges: Speedometer, odometer, temperature and fuel
 - Switches: Exterior/instrument lights; dome lights; wiper-washer; ignition; combination steering column switch for direction signals by moving lever up and down and headlight beams by moving lever fore and aft; hazard warning on steering column
 - Warning Lights: Generator, oil pressure, parking brake, direction signals and high beam
- **Instrument Panel:** Steel with vinyl-coated foam padding
- **Headliner:** Urethane covered with perforated vinyl
- **Heater and Defroster:** Outside air heater with manual water flow control for temperature
- **Interior Lights:** Instrument controlled by main light switch and dome with separate switch
- **Insulation and Sound Deadening**



- **Mirror, Rearview:** Inside mounted to windshield header with impact collapsible arm
- **Seat:** Full-width with latched forward fitting back for access to storage area behind seat; textured all-vinyl trim
- **Seat and Shoulder Belts:** Driver and passenger
- **Steering Wheel:** Molded plastic; 2-spoke; 15.7" diameter; center horn button
- **Sunshade:** LH vinyl trimmed



NOTES



HYDRAULIC BRAKE SYSTEM

Basically the hydraulic brake system consists of a master cylinder, activated by the driver's foot which in turn directs hydraulic fluid to the wheel cylinders that finally push the brake shoes or caliper pads against a friction surface to stop the vehicle. The friction surface can be either a disc or drum. A combination of front disc brakes and rear drum brakes is offered on all 10-30 series models.

Dual brake systems which split the total system into separate front and rear systems are offered as standard equipment on all light duty 10-30 series models. It is available optionally on all other hydraulic models except tilt cab models. For added safety a warning light on the instrument panel signals the driver of a brake malfunction in either system on all models equipped with dual brakes.

There are two types of boosters used. One is the master cylinder mounted direct acting (mechanical boost type) which is activated by mechanical movement of the master cylinder linkage, and the other is a separate hydraulic multiplier unit which is connected to the hydraulic system. The latter type is activated whenever hydraulic pressure is applied to the system.

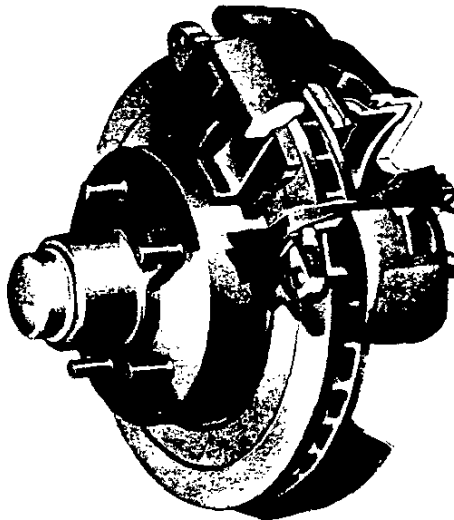
INDEX

LIGHT DUTY MODELS

	Page
Hydraulic Brakes	
Brake system & illustrations	1
Front brake specifications	2
Rear brake specifications	3
Model availability—Standard or optional	4
Parking Brakes	5

MEDIUM & HEAVY DUTY MODELS

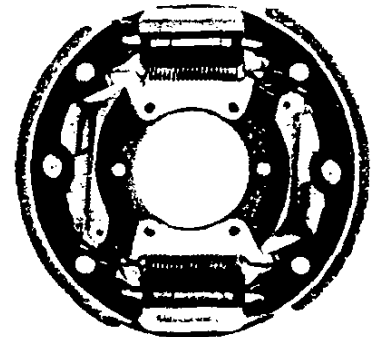
Index	6
Service brake application charts	7-9
Hydraulic Brakes	
Front brake specifications	9
Rear brake specifications	10
Miscellaneous hydraulic brake units	10-11
Air Brakes	
Front brake specifications	11
Rear brake specifications	12
Miscellaneous air brake units	13-14
Parking Brakes	15



Front Disc Brakes



Torque-Action Brake



Twin-Action Brake



BRAKES

HYDRAULIC BRAKE SYSTEM

✓FRONT DISC BRAKE SPECIFICATIONS

NAME	Chevrolet				
TYPE	Hub mounted dual faced front disc				
ADJUSTMENT	Self-adjusting				
DISC (Rotor) Construction	Double faced disc spaced by integrally cast radial cooling passages				
Material	Cast Iron				
Overall Diameter (in.)	10.00	11.00	11.86	12.50	14.25
Effective Outside Diameter (in.)	9.88	11.00	11.75	12.44	14.20
Effective Inside Diameter (in.)	6.40	7.18	8.00	8.50	10.16
Effective Width (in.) nominal	.50	1.03	1.28	1.28	1.53
Swept Area Per Axle (sq. in.)	155.2	205.1	224.8	240.2	292.6
LINING (Caliper Pad) Material	Wet compression molded asbestos			TPB 8135-1	
Lining Attachment	Bonded		Riveted		
Size Per Pad (in. x in. x in.)	4.00 x 1.60 x .194	5.96 x 2.21 x .41		Inner—6.00 x 1.80 x .53 Outer—8.00 x 1.80 x .43	
Effective Area Per Axle (in.)	22.23	38.3		42.95	
WHEEL CYLINDER Number Cylinders Per Wheel	One				
Number Pistons Per Wheel	One				
Pistons Diameter (in.)	1.87	2.94		3.375	

(LUV ONLY)

FRONT DRUM BRAKE SPECIFICATIONS

TYPE	Two Leading Shoes
ADJUSTMENT	Self-adjusting
SIZE	10 x 2
LINING Material	Bendix H3133
Attachment	Bonded
Width (in.)	1.97
Thickness (in.)	.189
Swept Area/axle (sq. in.)	N.A.
WHEEL CYLINDER Number per wheel	Two
Piston Size (in. dia.)	1.06



✓REAR BRAKE SPECIFICATIONS

NAME	Chevrolet					Wagner	Chevrolet
TYPE	Torque Action						Twin Action
ADJUSTMENT	Self-Adjusting						
SIZE	9 x 1.25	9.5 x 2.0	11 x 2.0	11 x 2.75	12 x 2.0	13 x 2.5	15 x 4
DRUM MATERIAL	Cast Iron						
LINING Material	Molded Asbestos						ABB-40-353
Attachment	Bonded				Riveted		
Width (in.)	1.18	2	2	2.75	2	2.5	4
Thickness (in.)	.20	Pri. .17 Sec. .20	.17	.25	.25	.25	.53
SWEPT DRUM AREA/AXLE Single Axle (sq. in.)	45.0	119	134.7	192.6	150.8	203.6	376.3
WHEEL CYLINDER Number Per Wheel	One						Two
Piston Size (in. dia.)	.75	.87	1	1.12	1.12	1.125	1.50

VACUUM/HYDRAULIC BRAKE BOOSTERS

Power brakes, which consist of vacuum powered diaphragm boosters, are offered as master cylinder mounted (mechanical boost) on light duty models, except P30 with 11,000 lb rear axle or with P30 Motor Home Chassis. A separate unit (hydraulic multiplier boost) where unit is frame mounted is used on P30 models

with 11,000 lb rear axle and P30 Motor Home Chassis series models.

Braking pressures are much greater due to the assist given by the booster diaphragm. The brakes will operate without vacuum but the pedal effort required will be greater.

Series	Avail-ability	Make	Number of Diaphragms	Nominal Diameter (in)	Mounting Location
✓LUV Pickup	Std	Bendix	One	6.00	Cowl
C10 (06, 14), K10	Std	Delco or Bendix	One(c)	9.50	Cowl
C10 (03), P10	Opt*	Delco or Bendix	One	9.50	Cowl
C20, K20, P20, C30, P30 (except w/11,000-lb rear axle or Motor Home Chassis)	Std	Delco (a)	Two	one diaphragm 8.00 one diaphragm 9.50	Cowl
P30 Motor Home Chassis	Std	Bendix (b)	One Ea.	11.00 Ea.	Frame
G10 (06); G20	Std	Delco	One	9.50	Cowl
G10 (05)	Opt	Delco	One	9.50	Cowl
G30	Std	Delco (a)	Two	one diaphragm 8.00 one diaphragm 9.50	Cowl
P30 (with 11,000-lb rear axle)	Std	Bendix (b)	One Ea.	11.00 Ea.	Frame

(a) Two diaphragms in this Single "Stepped Tandem Booster" unit

(b) Two complete booster units

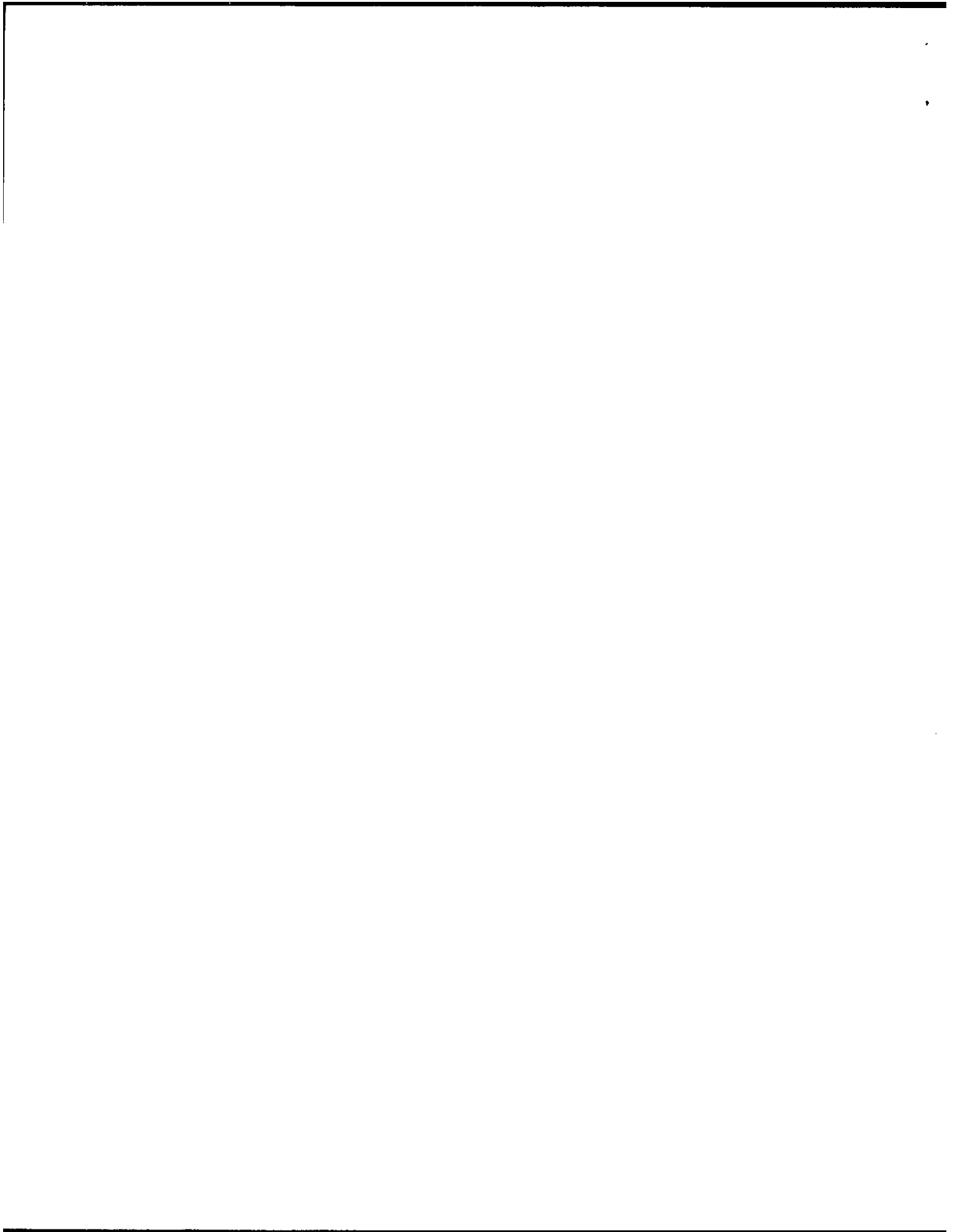
(c) On C/K10 Suburban models with 6800 GVW (C10) or 7150 GVW (K10) rating, two diaphragms (one 8.00" and one 9.50" diameter) are used in a single Delco "stepped tandem booster" unit

* Mandatory for 5300 lbs. or more GVW

✓HYDRABOOST BRAKE SYSTEM

Series	Avail-ability	Make	Pump Capacity
P31432 Motor Home Chassis	Opt†		
P31832 Motor Home Chassis	Std		

†Included and available only with 10,000-lb rear axle (RPO-HF7)



BRAKES

STANDARD HYDRAULIC BRAKES

SERIES	FRONT AND REAR BRAKE/AXLE CAPACITY COMBINATIONS							
	FRONT BRAKES				REAR BRAKES			
	Type Brake	Rotor (dia") or Drum (dia" x w")	Total lining Area (sq in)	Axle or Suspension Capacity	Type Brake	Drum Size (dia" x w")	Total lining Area (sq in)	Axle Capacity
√FRONT DISC BRAKES AND REAR DRUM BRAKES								
Vega Panel Express	Disc	9.88	22.2	1500	Torque Action	9 x 1.25	45.02	1790
El Camino	Disc	11.00	—	2325	Torque Action	9.5 x 2.0	—	2800
C10 (03, 06)	Disc	11.86	35.50	3100	Torque Action	11 x 2.0	81.40	3750
C10 (14)	Disc	11.86	35.50	3250	Torque Action	11 x 2.0	81.40	3750
G10	Disc	11.00	35.50	3000	Torque Action	11 x 2.0	81.40	3100
K10	Disc	11.86	35.50	3400	Torque Action	11 x 2.0	81.40	3750
P10	Disc	11.86	35.50	3100	Torque Action	11 x 2.0	81.40	3500
C20 (03, 06); P20	Disc	12.50	35.50	3700	Torque Action	11.15 x 2.75	107.97	5700
C20 (63)	Disc	12.50	35.50	3900	Torque Action	13.0 x 2.5	116.38	7500
All G20	Disc	11.86	35.50	3200	Torque Action	11 x 2.0	81.40	3500
K20 (03,06)	Disc	12.50	35.50	3500	Torque Action	11.15 x 2.75	107.97	5700
K20 (63); C30 (03)	Disc	12.50	35.50	3700	Torque Action	13 x 2.5	116.38	7500
C30 (63)	Disc	12.50	35.50	3900	Torque Action	13 x 2.5	116.38	7500
P30 (except Motor Home Chassis)	Disc	12.50	35.50	4000	Torque Action	13 x 2.5	116.38	7500
P30 Motor Home Chassis (308, 311, 314 models)	Disc	12.50	35.50	4300	Torque Action	13 x 2.5	116.38	7500
√P30 Motor Home (318 model only)	Disc	14.25	43.0	5000	Twin Action	15 x 4.0	224.5	10,000
All G30	Disc	12.50	35.50	3600	Torque Action	13 x 2.5	116.38	5700
FRONT DRUM BRAKES AND REAR DRUM BRAKES								
LUV	Two Leading Shoes	10 x 2	N/A	1600	Torque Action	10 x 1.75	N/A	3500

OPTIONAL HYDRAULIC BRAKES

SERIES	FRONT AND REAR BRAKE/AXLE CAPACITY COMBINATIONS							
	FRONT BRAKES				REAR BRAKES			
	Type Brake	Rotor (dia") or Drum (dia' x w')	Total lining Area (sq in)	Axle Capacity	Type Brake	Drum Size (dia' x w')	Total lining Area (sq in)	Axle Capacity
FRONT DISC BRAKES AND REAR DRUM BRAKES								
P30 (except Motor Home Chassis)	Disc	12.50	35.50	4000	Twin Action	15 x 4.0	224.5	11,000
√P30 Motor Home Chassis (314 model only)	Disc	14.20	43.0	5000	Twin Action	15 x 4.0	224.5	10,000

*Disc brakes—Gross lining area per axle; Drum brakes—Nominal lining area per axle.

COLOR & TRIM

✓ PAINT DESCRIPTION

Chevrolet trucks are finished with a baked-on, high-luster paint which is durable and easy to maintain. Prior to application of the finish coat, all bodies, cabs and sheet metal surfaces are thoroughly cleaned and primed.

Then one of the following finish paints is applied:

Paint	Applicable Model
Acrylic lacquer	Vega Panel Express and El Camino
Alkyd enamel	LUV Pickup
Acrylic enamel	All Series 10-90 models except G10-30 models
Non-aqueous dispersion enamel	Series G10-30 models

1973 PAINT REFINISH NUMBERS EL CAMINO MODELS

Color	Chevrolet Option No.	Du Pont	Rinshed-Mason*	Ditzler
BEIGE	81	5491L	A-2653	2549
TUXEDO BLACK	19	99L	A-946	9300
LIGHT BLUE	24	5473L	A-2623	2523
DARK BLUE	26	5478LH	A-2624	2524
MIDNIGHT BLUE	29	5474L	A-2626	2526
DARK BROWN	68	5483L	A-2647-D	2543
CHAMOIS	56	5481L	A-2638	2537
LIGHT COPPER	60	5490LM	A-2639-D	2538
GREEN-GOLD	46	5479L	A-2631-D	2530
LIGHT GREEN	44	5475L	A-2629	2529
DARK GREEN	42	5489LH	A-2628	2528
MIDNIGHT GREEN	48	5480LH	A-2632	2531
DARK RED	74	5477LM	A-2649-F	2545
SILVER	64	5476L	A-2643	2541
TAUPE	66	5482L	A-2645	2542
ANTIQUÉ WHITE	11	5338L	A-2080	2058

LUV PICKUP

Color	Chevrolet Option No.	Du Pont	Rinshed-Mason	Ditzler
BEIGE	520	38703	172B810	23735
LIGHT BLUE	529	38704	172B23	14449
DARK BLUE	531	38705	172B22	14448
RED	512	38702	172B52R	71993
WHITE	507	38701	172B91	0831
YELLOW	502	38700	172B74	82025

VEGA PANEL EXPRESS MODELS

Color	Chevrolet Option No.	Du Pont	Rinshed-Mason*	Ditzler
MEDIUM BLUE	23	5486L	A-2622	2522
MEDIUM BRONZE	62	5488LH	A-2641-G	2540
CHAMOIS	56	5481L	A-2638	2537
MEDIUM GREEN	41	5441LH	A-2550-G	2437
MIDNIGHT GREEN	48	5480LH	A-2632	2531
LIGHT ORANGE	61	5487LH	A-2640-G	2539
MEDIUM RED	75	5485LM	A-2650-F	2546
SILVER	64	5476L	A-2643	2541
WHITE	11	5338L	A-2080	2058
LIGHT YELLOW	51	5484LH	A-2634-G	2533

*Acrylic lacquer paint is shown, but for enamel number replace first letter "A" with letter "P" except the color black which is P-403.

10-30 SERIES MODELS EXTERIOR COPO COLORS

In addition to the wide selection of standard colors offered on all Light Duty models, the following colors may be ordered as a non cost COPO.

Color	CPO No.
MIDNIGHT BLACK	9V1
TANGIER ORANGE	9V2
WHEATLAND YELLOW	9V3

1973 PAINT REFINISH NUMBERS ALL 10-90 SERIES MODELS

Color	Chevrolet Option No.	Du Pont	Rinshed-Mason*	Ditzler
GLENWOOD GREEN	505	5412L	A-2594	42850
HAWAIIAN BLUE	510	5183L	A-2253	2188
CRIMSON RED	514	5470LH	A-1596-R	70704
FROST WHITE	521	817L	A-1347	2185

10-30 SERIES MODELS ONLY

Color	Chevrolet Option No.	Du Pont	Rinshed-Mason*	Ditzler
SKYLINE BLUE	503	5512L	A-2593	2563
CATALINA BLUE	508	5571LH	A-2596	2564
SPANISH GOLD	511	5313L	A-2475	2323
BURNT ORANGE	515	5509LH	A-2598	2565
LIME GREEN	517	5504LH	A-2599	2566
SUNSET GOLD	527	5500L	A-2601	2567
DESERT SAND	528	5501L	A-2602	2568
MOJAVE TAN	555	5569L	A-2597	2569
MOSS OLIVE	562	5503L	A-2672	2571
MARINE TURQUOISE	568	5508L	A-2673	2572

ALL 10-30 SERIES EXCEPT CHEVY VAN OR SPORTVAN

Color	Chevrolet Option No.	Du Pont	Rinshed-Mason*	Ditzler
SPORT SILVER	507	5510L	A-2595	32537

10-30 SERIES CHEVY VAN OR SPORTVAN ONLY

Color	Chevrolet Option No.	Du Pont	Rinshed-Mason*	Ditzler
TOPAZ YELLOW	552	5511L	A-2600	2570

50-90 SERIES MODELS ONLY

Color	Chevrolet Option No.	Du Pont	Rinshed-Mason*	Ditzler
BLACK	500	99L	A-946	9000
MEDIUM OLIVE	504	5055LH	A-2127	2097
BRIGHT RED	513	48LH	A-2329-R	2258
ORANGE	516	31L	A-1597	60156
MEDIUM GREEN	518	5184L	A-2254	2208
DARK YELLOW	519	4320LH	A-1605	81348
DARK BLUE	523	5336L	A-2474	2366
GOLD	526	5157L	A-2247	2176
PRIME	565	—	—	—

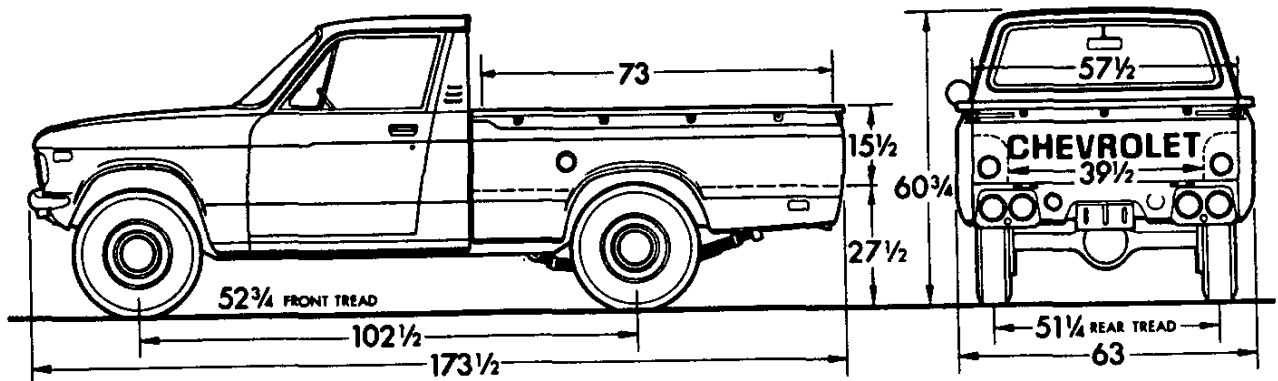
SPECIAL PAINTS

In addition to the wide selection of standard colors offered on Chevrolet trucks, virtually any special color can be obtained on an order for two or more trucks. For details and prices on special paints, consult the Chevrolet Zone Office.

PERMANENT FLEET COLORS

Color	Option No.	CPO No.
MIDNIGHT BLACK (BLACK)	500	9V1
CRIMSON RED	514	—
TANGIER ORANGE (ORANGE)	516	9V2
FROST WHITE	521	—
GLENWOOD GREEN	505	—
WHEATLAND YELLOW (DARK YELLOW)	519	9V3
HAWAIIAN BLUE	510	—

DIMENSIONS



Cab Construction

The cab is a 2-door, 2-passenger unit utilizing all-steel, welded construction. A plenum chamber with high and low level, screened air intake is incorporated in the front end structure for interior ventilation. Single-wall construction is utilized throughout the remainder of the cab except in the upper rear quarter areas. Drip rails are used at the sides of the roof panel. Lower body joints are filled with sealer.

Pickup Box

The nominal 6-foot pickup box is of a single panel sidewall welded construction, and has a capacity of 38 cubic feet. The box has ten mounting locations to the frame, eleven cargo holddown eyes, and an evaporative emissions storage cannister mounted on the front left side of the box. Spare tire storage attachment to the bottom, rear of the box is provided with a winch mechanism for raising and lowering the tire and wheel.



ELECTRICAL

BATTERY AND GENERATOR SELECTION

Reference Chart—Electrical Loads
(12-Volt System)

Equipment	Amperes
Two Headlights (Upper beam)	11.0
Two Headlights (Lower beam)	9.3
Parking Lights	2.3
Stop Lights (2)	3.6
Ignition (Including gauges)	2.0
Electric Windshield Wipers	4.0
De Luxe Heater	8.0
Auxiliary Heater	6.0
Radio	1.2
Identification Lights (3 in line, front & rear) ..	3.1
Clearance Lights (8)	4.1
Two-Way Radio (Standby)	0.5
Two-Way Radio (Transmit)	2.0
Safety Light (Spotlight)	3.9
Instrument Lights	0.8
Air Conditioning	20.0

The great variety of truck operating conditions creates wide variations in demands upon the electrical system. Trucks operated as recreational vehicles or special purpose units with extra electrical equipment, require a higher output generator to meet the extra current load. It is therefore important to consider the electrical system in matching a truck to the job.

Battery Selection

The standard battery has ample storage capacity for most truck applications. The optional heavy-duty battery should be recommended for additional cranking performance and for operations with recreational equipment and in extremely cold climates. Camper enthusiasts will also benefit from the added reserve of an auxiliary battery. The numerous clearance lights impose a heavy current drain during nighttime parking.

Generator Selection

A battery serves only to store electricity and must be recharged by the generator during the normal operation of the truck. Generator capacity should be selected so that the constant electric load (amperes of current draw) does not exceed 80 percent of generator maximum output capacity. This leaves 20 percent of surplus generator capacity to replace battery energy used in starting or during temporary electrical overloads.

Determine the constant electrical load from the table at left, consider average road speeds, and recommend a generator which will provide the maximum output required at the vehicle's average road speed. Specifications and operating characteristics of Chevrolet's standard and optional equipment "DELCOTRON" generators are described on Page 4.

MISCELLANEOUS

12-Volt System

A 12-volt electrical system with a negative ground is used on all models.

Ignition Switch

The ignition switch has four positions: ACC-OFF-ON-START. The key is removable only from the OFF position. Once installed, the center electrical connector plug on the switch cannot be removed without removing the complete switch assembly. Such removal requires the use of the ignition key. Therefore, it is very difficult to bridge the ignition and solenoid circuits to start the engine without a key, thus providing added theft resistance.

Multi-Plug Connectors

Plastic multi-plug connectors join major wiring harnesses at terminal points—they make electrical system servicing easier, protect wires from road splash and corrosion. Single wires, too, are protected by enclosed terminals.

Dual Circuit Breaker

Fire hazard caused by short circuits in the wiring is reduced to a

minimum because all electrical circuits are protected. A dual bi-metal 15-ampere thermal circuit breaker is incorporated in the light switch, one circuit for the headlights, and one for the parking lights. If a short develops in either circuit, one of the circuit breakers relieves the load. Other electrical circuits are protected by fuses of proper size or by fusible links.

Starter

All Chevrolet trucks use a Delco 12-15-volt starter with over-running clutch and solenoid-controlled sliding pinion. Bearings are oilless graphite-filled bronze on all gasoline models for less maintenance. Starter is actuated by turning the ignition key to START position. All light duty models use roll-type clutches in the overrunning clutch assembly.

Traffic Hazard Warning Switch

All 10-30 series models have a standard traffic hazard warning switch mounted on the right side of the direction signal control housing, just below the steering wheel. When actuated, the two front and two rear turn signal lights flash in rapid succession as well as the turn signal indicators on the instrument panel.

1
2
3

BATTERY SPECIFICATIONS

Delco batteries are used as standard and optional equipment on all models

Standard	Vega Panel Express; Blazer; C10-30; G10-30; K10-20; P10-30 with six cylinder engine only	LUV Pickup	Blazer*; C/K/G10 w/307, 350 V8; C/K/G/ P20-30 w/292 Six, 307 V8, 350 V8 (except Motor Home Chassis)	El Camino and P30 (all) w/454 V8; P30 Motor Home Chassis w/350 V8
Optional	—	—	† C10-30; K10-20	El Camino*; C10-30; G10-30; K10-20; P10-20
Voltage; Number Batteries	12;1	12;1	12;1	12;1
Capacity (amps) (@ 20-amp-hr rate)	45	50	61	80
Plates Per Cell	9	—	11	15
Size: Length (in)	9.44	10.00	10.12	10.21
Width (in)	6.75	6.50	6.75	6.77
Height (in)	8.41	7.87	8.75	8.56
Weight (lbs) Wet	34	35.40	44	46

*Except 454 V8. †Auxiliary battery.



ELECTRICAL

GENERATOR

All Chevrolet trucks (except LUV Pickup) use "DELCO TRON" 12-volt generators as standard and optional equipment. They are alternating current generators that are diode-rectified to produce direct current. The availability chart below shows which generators are available on each light duty model and lists the pertinent specifications of each one.

The "DELCO TRON" 10-SI-100 series is used as standard equipment on all Series 10-30 models. It has a cast aluminum case with a ball bearing at the drive end and a needle bearing at the rear. It also features an integral charging system which combines the generator and a miniaturized integrated-circuit voltage regulator into one compact unit.

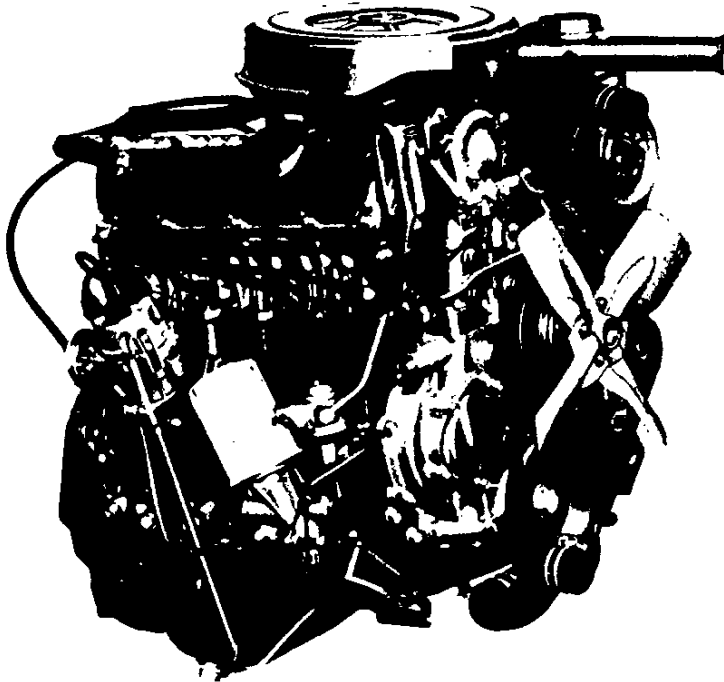
GENERATOR AVAILABILITY BY MODEL SERIES							
Rated Output			Engine	Drive Pulley Ratio	Generator Model Number	Standard	Optional
Max Capacity (amps)	Max Watts @ 14 volts	Nominal Amp @ Idle†					
30	420	—	LUV 4-cyl.	1.96:1	LT130-83	LUV	—
32	448	20	140 Four	2.7:1	10-SI-100	Vega Panel Express	—
37	518	23	250	2.7:1	10-SI-100	C10/K10/G10/P10 C20/K20/G20; C30/G30	—
	518	27	307, 350	2.7:1	10-SI-100	El Camino C10/K10/G10/C20/K20/ G20/C30/G30	—
		23	454	3.1:1			
42	588	26	250	2.7:1	10-SI-100	P20-30	El Camino C10/K10/G10/P10 C20/K20/G20; C30*
		25	292	2.5:1			
	588	30	307, 350	2.7:1	10-SI-100	P20; P30 (except Motor Home)	El Camino; C10/K10/ G10; C20/K20/G20; C30/G30
42	588	26	454	3.1:1	10-SI-100	—	Vega Panel Express
		32	140 Four	2.7:1			
55	770	32	140 Four	2.7:1	10-SI-100	—	Vega Panel Express
61	854	30	250	2.7:1	10-SI-100	—	C10/K10/G10/P10; C20/K20/G20/P20; C30/G30/P30
		26	292	2.5:1			
	854	40	307, 350	2.7:1	10-SI-100	—	C10/K10/G10; C20/K20/G20/P20; C30/G30/P30
		30	454	3.1:1			
854	30	350, 454	3.1:1	10-SI-100	P30 Motor Home Chassis	—	

*Included with optional platform and stake rack or dual rear wheels on C20-30.

†Amps at idle vary because of differences in engine RPM at idle due to emission requirements, optional air conditioning and transmission and engine options.



LUV 4 CYLINDER



Typical Engine Shown
LUV 4 Cylinder

Applications

Standard: LUV Pickup
Optional: None

Basic Specifications

Engine type Overhead Cam In-line 4
Piston displacement 110.8
Bore & stroke (nominal) 3.31 x 3.23
Compression ratio 8.2:1
Carburetor type 2-barrel

Test Procedures

These curves represent full throttle performance as obtained from a dynamometer test simulating actual operating conditions when the engine is in the vehicle, with ratings corrected to barometric pressure of 29.00" mercury and 85°F dry air.

SAE net horsepower (85°F) 75 @ 5000 rpm
SAE net torque, lb-ft (85°F) 88 @ 3000 rpm

SPECIFICATIONS

	LUV 4 Cyl.	Standard 140	Optional 140
Basic Description	Four cylinder in-line; overhead cam with cast iron block and aluminum cylinder head	Four-cylinder in-line; overhead cam aluminum block	
Displacement (cu in)	110.8	140	
Bore & Stroke (in)	3.31 x 3.23	3½ x 3¾	
Compression Ratio	8.2:1	8.0:1	
Firing Order	NA	1 3 4 2	
SAE Net Horsepower @ rpm	75 @ 5000	72 @ 4400	85 @ 4400
SAE Net Torque (lb-ft) @ rpm	88 @ 3000	100 @ 2000	115 @ 2400
Air Cleaner	See model pages for type		
Bearings, Camshaft	Steel-backed babbitt or copper lead alloy		
Inlet Valve	Opens	22° BTC	28° BTC
	Closes	58° ABC	70° ABC
Exhaust Valve	Opens	92° BTC	91° BTC
	Closes	48° ABC	55° ABC
Inlet Duration Ramp		260°	278°
Exhaust Duration Ramp		320°	326°
Carburetor			
Type	2-Barrel downdraft	1-Barrel downdraft	2-Barrel downdraft
Make	Hitachi; DRJ-340	Rochester	
Venturi ID (in)	Pri—.9; sec.—1.1	1.22	1.09
Throttle Bore (in)		1.438	1.438
Choke Control	Manual	Automatic	
Connecting Rods			
Material		Forged steel	
Length (in)		5.695-5.705	
Bearings	Steel-backed with tri-metal	Steel-backed inserts with copper lead alloy lining	
Crankcase Ventilation		Closed positive	
Crankshaft			
Material	Heat-treated forged steel	Nodular iron	
Number of Counterweights		4	
Main Journals (in)		2.3004	
Crankpin Journals (in)		1.999-2.000	
Torsional Damper	None	Rubber mounted inserts	
Bearings	Steel-backed with tri-metal	Steel-backed inserts with copper lead alloy lining	
Distributor	Automatic dual points; 1 set of advanced points for normal operation and 2nd set of retarded points for acceleration or deceleration	Delco-Remy; centrifugal & vacuum advance	
Fuel Filters			
Carburetor		Paper type	Sintered bronze
Fuel Tank		Plastic mesh screen	
Lubrication System		Full pressure	
Main Bearings		Direct pressure	
Camshaft Bearings		Direct pressure	
Connecting Rods		Direct pressure	
Valves & Tappets		Pressure & gravity	
Cylinder Walls		Splash	
Piston Pins		Splash	

NA—Not available

140 FOUR

SPECIFICATIONS

	Luv 4 Cyl.	Standard 140	Optional 140
Oil Capacity (qts)			
With filter change			4 quarts
W/o filter change	4.2		3½ quarts
Oil Filter			
Standard			Full flow; throwaway type
Capacity (pt)			1
Oil Pump			
Type	Rotor		Eccentric inside-outside, crankshaft driven
Capacity (gpm)			4.5 @ 2000 rpm
Normal Pressure (psi)	64		40 @ 1000
Pistons			
Type	Cam-ground		Autothermic
Material	Aluminum alloy		Cast aluminum alloy
Skirt	Tin plated full		Iron plated open slipper
Head			Flat
Piston Pins			
Type			Rod shrink fit to pin
Material	Case hardened steel		Chromium-steel
Piston Rings			
Compression Rings			
Number		2	
Type			2 Upper-barrel face; lower-barrel face, inside bevel
Material	Chrome plated cast iron		Upper—Cast alloy iron, chrome plated; lower—Cast alloy iron, chrome flash
Oil Control Rings			
Number	1		1
Type	One-piece		Multi-piece
Material	Chrome plated cast iron		Rails—steel, chrome plated; Expander—stainless steel
Thermostat	Vox pellet; 180°F		Harrison or Dole; 195°F
Valve Train			
Type			Overhead cam direct acting
Tappets			Mechanical—adjustable
Valve Lash			.015
Intake Valves			
Material		Alloy steel	
Head Diameter (in)			1.615—1.625
Face Coating			Stellite
Seats			Machined in cylinder head
Exhaust Valves			
Material	Alloy steel		Hardened weld-on tips and chrome-flashed stems
Head Diameter (in)			1.370—1.380
Face Coating			Stellite
Seats			Machined in cylinder head; induction hardened
Rotators		None	
Water Pump			
Type			Centrifugal, die cast aluminum housing
Capacity (gpm)			16 @ 2000 rpm

NA—Not available

FUEL TANKS

SPECIFICATIONS

Series	Tank Location	Std/ Opt	Approx. Tank Cap. (gallons)	Filler Location	Description
LUV Pickup; Blazer; Pickups; Suburban; Chassis-Cab Models					
El Camino †	Behind rear axle	Std	26	Behind rear license plate	Rectangular
Vega Panel Express †	Behind rear axle	Std	11	Behind rear license plate	Rectangular
LUV Pickup †	Inboard LH frame rail	Std	10	Left Rear	Trapezoidal
C10/K10 Blazer & Suburban †; C20/K20 Suburban †	Inboard frame behind rear axle	Std	24	Right Center	Rectangular
		Opt	30	Right Center	Rectangular
C/K10703; w/E63, E62 †	Outboard RH frame rail	Std	16	Right Center	Step-shape Rectangle
	Outboard LH frame rail	Opt	16	Left Center	Step-shape Rectangle
C/K10903 with E63, E62; C/K20903-63 with E63, E62 C30903-63 with E63, E62 C31003	Outboard RH frame rail	Std	20	Right Center	Step-shape Rectangle
	Outboard LH frame rail	Opt	20	Left Center	Step-shape Rectangle
Chevy Van; Sportvan					
G10-20; G30 (06) †	Between frame rails behind rear axle	Std	21	Left Rear	Rectangular
G30 (05)	Between frame rails behind rear axle	Std	21	Left Rear	Rectangular
Forward Control Models					
P10 †	Between frame rails behind rear axle	Std	21	Left Rear	Rectangular
P20; P30	Outboard RH frame rail	Std	30	Right Center	Rectangular
✓ P30 Motor Home	Outboard RH frame rail	Std	30*	Right Center	Rectangular
		Opt	50 †	Right Center	Rectangular

*P30 Motor Home has temporary 4 qt fuel tank connected for shipping purposes.

†Equipped with evaporative emission controls. California requires evaporative emission controls on all gasoline powered vehicles—effective 1-1-73.

‡Interim availability as standard equipment with P31832 or option with P31132 or 31432.



TRANSMISSIONS

VEGA PANEL EXPRESS

EL CAMINO

LUV PICKUP

3-SPEED TRANSMISSIONS

Type	Chevrolet 3-Speed	Chevrolet 3-Speed	Chevrolet 3-Speed
Applications	140 Four	307 V8 (130 HP)	350 V8 (165 HP)
Synchronized Speeds:	All forward		
Gear Ratios:			
First	3.11	2.85	2.54
Second	1.84	1.68	1.50
Third	Direct	Direct	Direct
Reverse	3.22	2.95	2.63
Gears:			
Type	Helical		
Material	Forged steel; hardened		
Gearshift Control:			
Type	Column		
Location			

4-SPEED TRANSMISSIONS

Type	LUV 4-Speed	Chevrolet 4-Speed	Chevrolet Wide-Range 4-Speed	Chevrolet Close-Ratio 4-Speed
Applications	LUV 4-Cylinder	140 Four	350 V8 (200 HP)	454 V8
Synchronized Speeds	All forward			
Gear Ratios:				
First	3.51	3.11	2.54	2.20
Second	2.18	2.20	1.80	1.64
Third	1.42	1.47	1.44	1.27
Fourth	Direct	Direct	Direct	Direct
Reverse	3.93	3.11	2.54	2.26
Gears:				
Type	Helical			
Material	Forged steel; hardened			
Gearshift Control:				
Type	Manual direct			
Location	Floor*			

AUTOMATIC TRANSMISSIONS

Type	Chevrolet Powerglide	Turbo Hydra-matic		
Applications	140 Four	140 Four	454 V8	307 V8; 350 V8
Drive (Maximum)	4.73:1	4.19:1	5.21:1	5.29:1
Cooling	Water			

*Console optional

