

# 1974 Vega

	Page No.
<b>Standard Equipment</b> .....	2
<b>Hatchback Coupe</b> 1HV77—Four .....	3,4,6
<b>Notchback Coupe</b> 1HV11—Four .....	5
<b>Kammback</b> 1HV13—Four .....	7
<b>Interiors</b> .....	8-11
<b>Panel Express</b> 1HV05—Four .....	12-13
<b>Major Features</b> .....	14-15
<b>Safety and Security Features</b> .....	16
<b>Equipment Summary</b> .....	17
<b>Power Teams</b> .....	18
<b>Selected Options</b> .....	19-20
<b>Color and Trim</b> .....	21-23
<b>Specifications</b> .....	24

ORIGINAL COPY

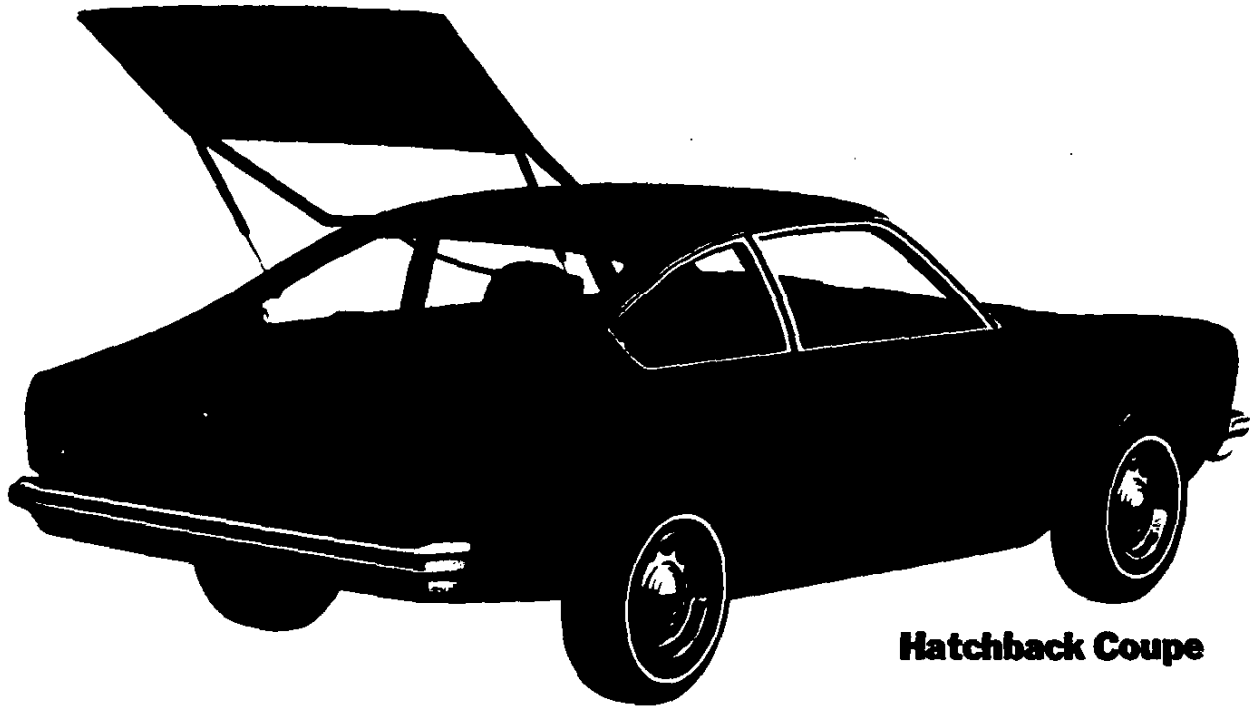
# Vega

- Integrated front styling with grille louvers molded into front panel, recessed headlights and rectangular parking lights
- Improved bumper system with spring-mounted aluminum bumpers both front and rear
- Roomy 4-passenger interior design with high-back bucket seats up front and bucket-styled rear cushions. Front seats foam-filled for added comfort and feature built-in head restraints
- Hydropneumatic counterbalance for Hatchback rear lid
- Folding rear seat on Hatchback Coupe and Kammback
- Concealed storage area under load floor on both Hatchback Coupe and Kammback
- Flush-mounted outside door handles
- Wide doors for easier rear seat entrance
- Full door-glass styling on all models
- Curved side windows
- Stationary rear quarter windows (swing-out rear side windows optional on Hatchback and Notchback Coupes)
- Choice of 14 Magic-Mirror acrylic lacquer colors
- Bright roof drip molding on Hatchback and Kammback
- Unitized body structure welded from large steel panels
- Double-panel roof structure
- Double-panel door construction with hinges welded in place to maintain proper fit and tighter sealing
- Flush-and-dry rocker panels
- Transmission control is tunnel-mounted with all power teams, and includes a wood-grained mini-console with automatic transmission
- Function symbols on headlights, cigarette lighter, and radio control knobs
- Cigarette lighter and center dome light
- Cut-pile carpeting
- Sequential front seat belt and ignition interlock system
- Pushbutton electric windshield washer
- Door and sidewall trim panels molded of durable soil-resistant plastic
- Recessed pull-type inside door handles
- Convenient stowage well in driver's door, plus glove compartment in instrument panel
- Specifically styled wheels, hub caps, and optional wheel trim rings
- Side marker lights front and rear

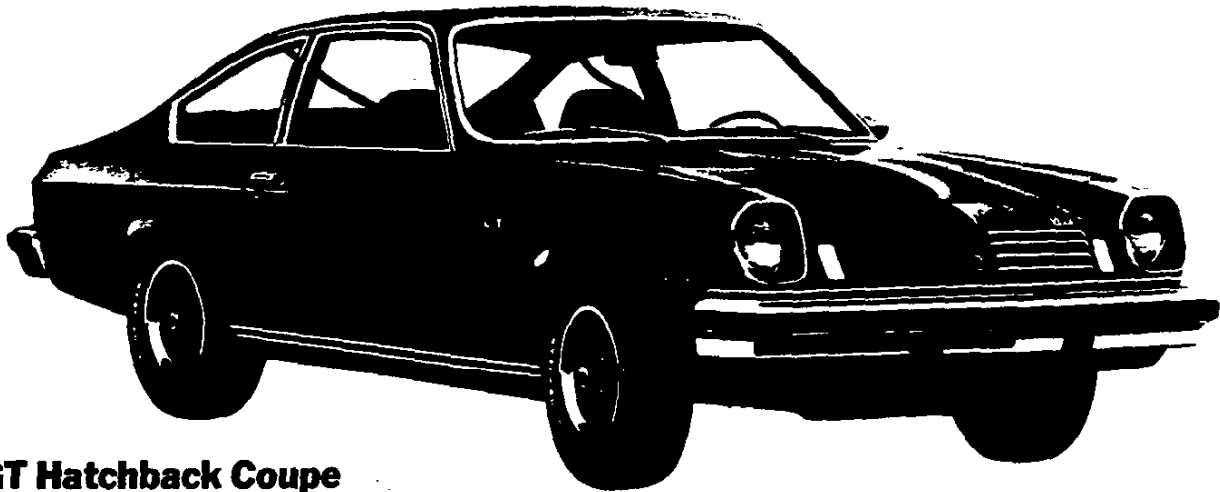


## • **Hatchback Coupe (with Custom Exterior)**

*Custom Exterior RPO ZJ2 includes all standard exterior features plus:* ● Bright hood header panel molding ● Body-colored door handle accents ● Belt molding ● Black-accented lower body side molding ● Black finished body sill ● Bright wheel opening moldings



**Hatchback Coupe**



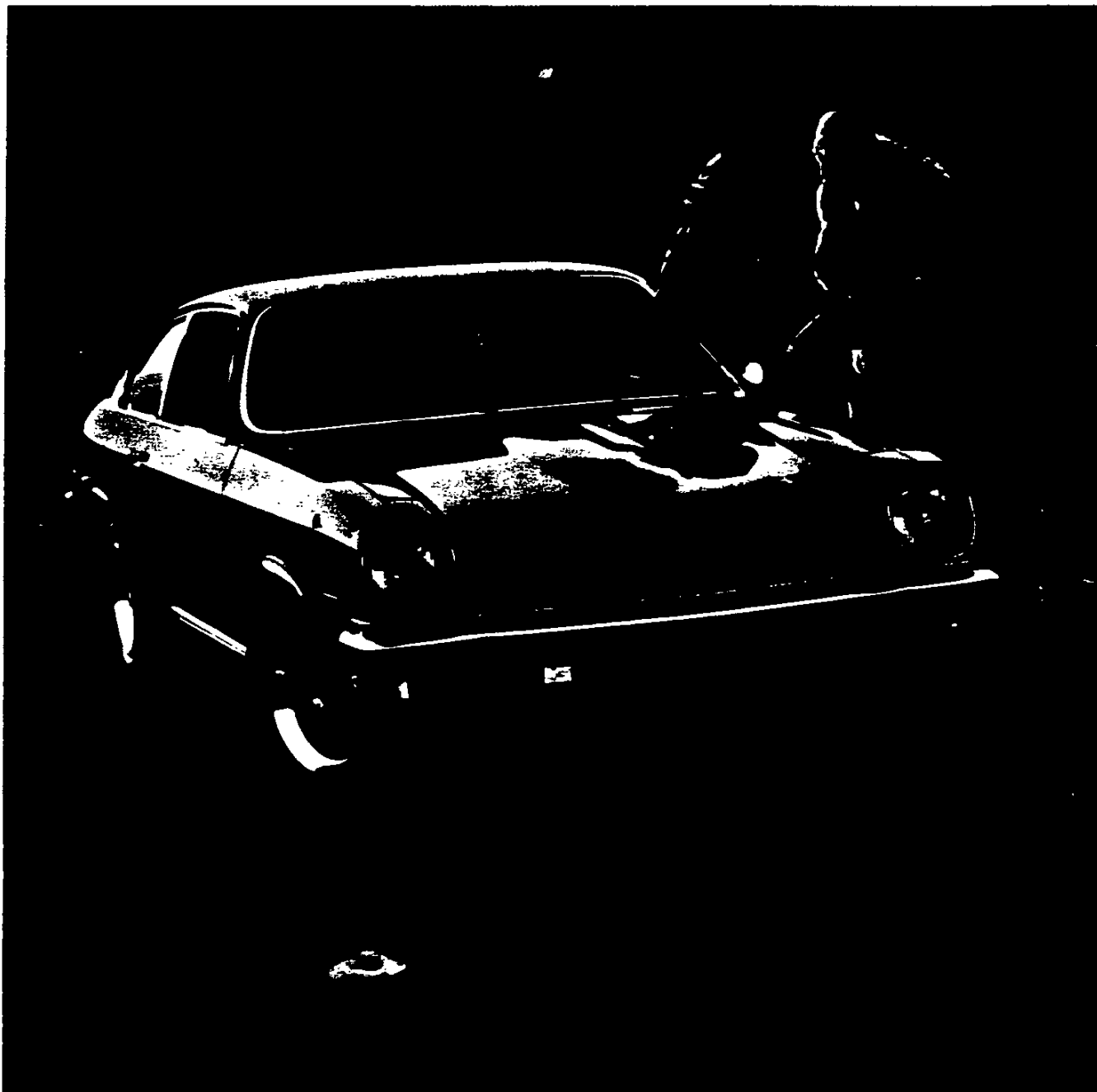
**GT Hatchback Coupe**

*GT RPO Z29 includes this equipment in addition to or replacing standard equipment:*

● Black-accented headlight bezels ● Bright hood header panel molding ● Parking lights with clear lenses and amber bulbs ● Body-colored door handle accents ● Belt molding ● Black-accented lower body side molding ● Black-finished body sill ● Special GT 13" x 6" wheels with trim rings and center caps ● A70-13 white lettered tires ● GT front fender emblem

*GT option also includes higher-output engine, special suspension components and interior features. Also includes left-hand remote-control sport mirror when Custom Interior is ordered. Sport Stripes available at extra cost.*

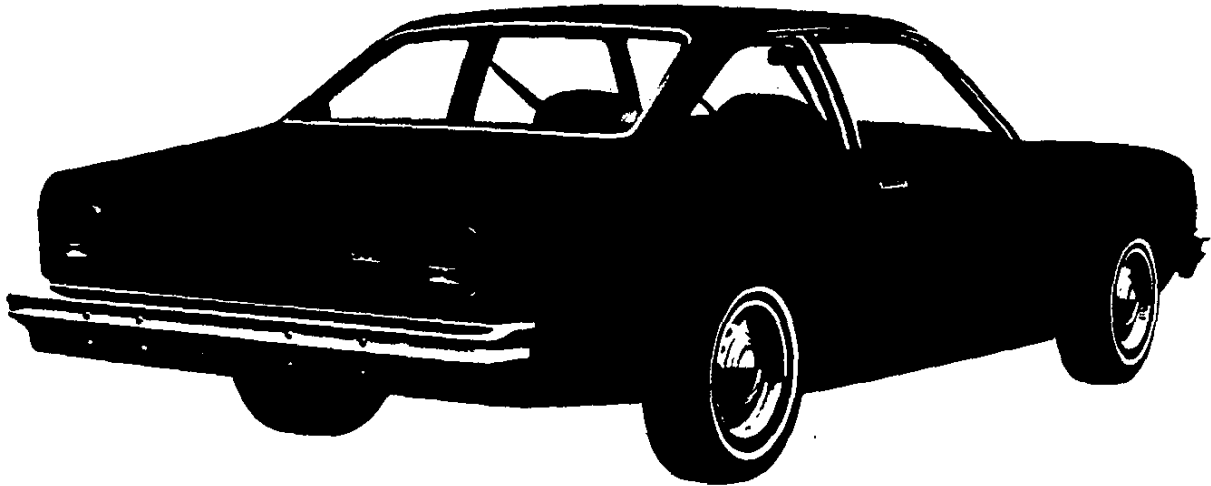
**GT Hatchback Coupe (with Sport Stripes)**



## **Notchback Coupe (with Decor Group)**

*Decor Group RPO YE4 includes all standard exterior and interior features plus:*

● *Bright side window moldings* ● *Sliding adjustment for passenger seat*



**LX Notchback Coupe**

*Vega LX exterior features include: Vinyl roof cover. Parking lights with clear lenses and amber bulb. LX nameplate on front fenders. Bright hood header panel molding. Bright body side molding with black vinyl insert. Bright wheel opening moldings. Bright side window moldings. Body-colored door handle accents. Wheel covers.*

*Vega LX interior features include: Special contoured seats with deluxe trim. Soft vinyl door trim with bright accents. Door pull assist handles. Map pockets in both doors. Assist handle built into instrument panel pad. Sliding adjustment for passenger's bucket seat. Electric clock. Day-night rearview mirror. Automatic dome light switch on right-hand door. 4-spoke sport steering wheel. Bright transmission control trim plate. Rear ashtrays. Special sound insulation including hood insulator.*

## Hatchback Coupe (with Sports Decor Package)

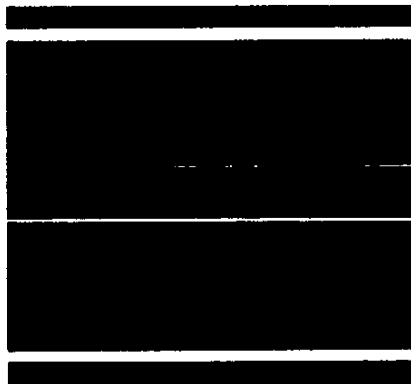
Model illustrated here shows *Black stripe and molding combination plus wheel trim rings and white stripe tires which are available at extra cost. See page 21 for Sports Decor Package Color Selection Chart.*



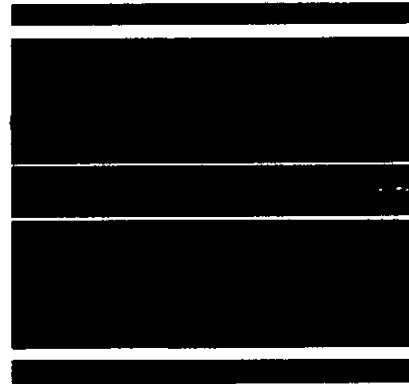
## Other Sports Decor Stripe and Molding Combinations



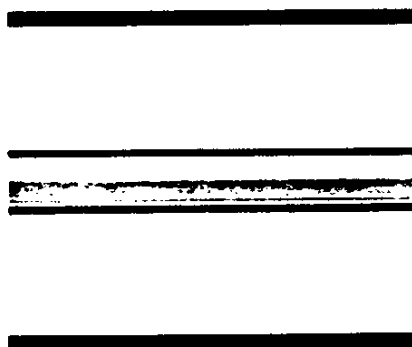
*Silver (14A)*



*Black (19A)*

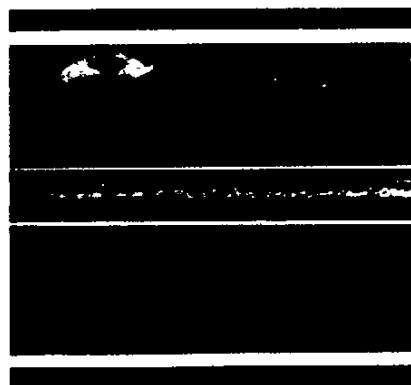


*Blue (24A)*

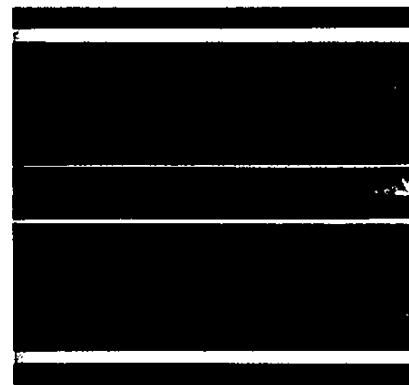


*White (11A)*

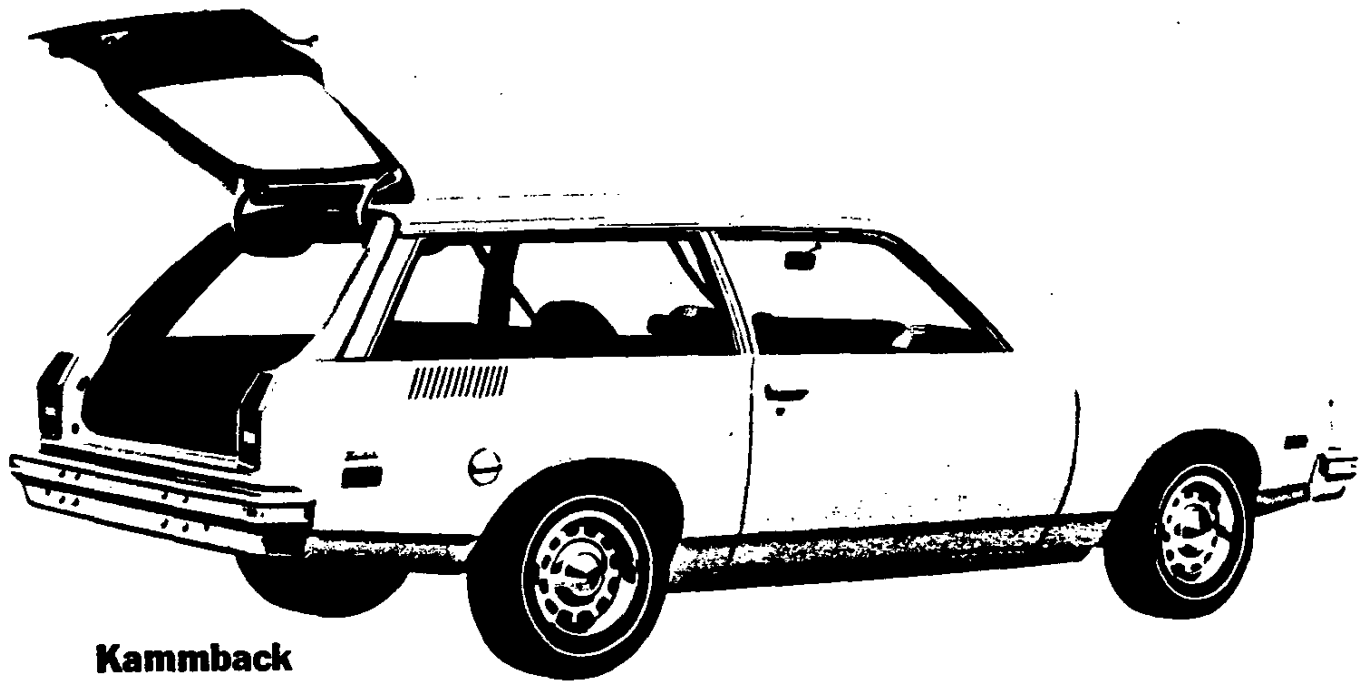
6/Vega



*Green (48A)*



*Orange (97A)*



**Kammback**



**Estate Kammback**

***Vega Estate exterior features include: Wood-grained vinyl exterior panels, outline moldings and wheel opening moldings. Wheel covers. Estate nameplate on rear fenders.***

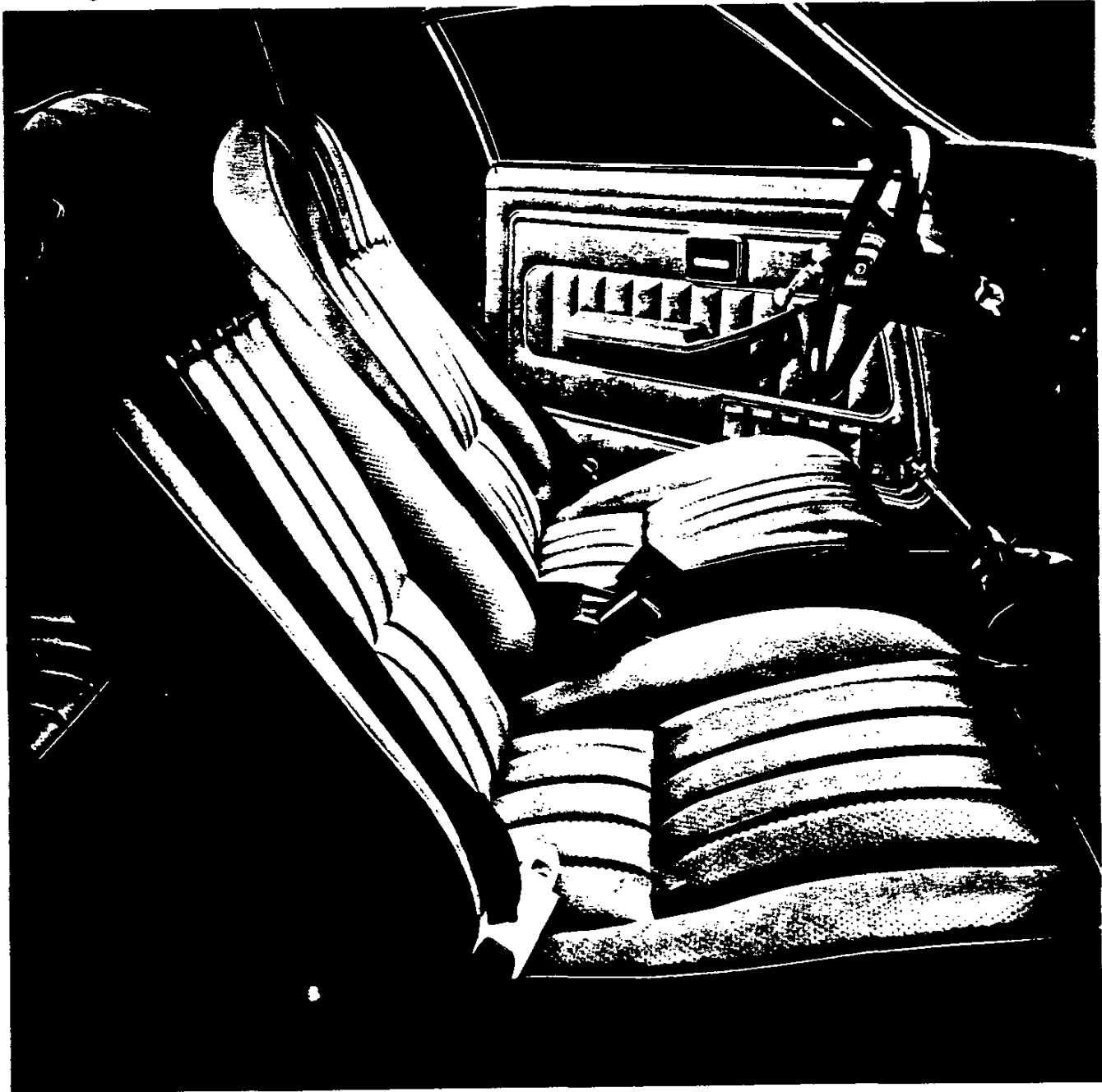
***Vega Estate interior features include: Special contoured seats with deluxe trim. Soft vinyl door trim with bright accents. Door pull assist handles. Map pockets in both doors. Assist handle built into instrument panel pad. 2-position adjustable driver's seat back. 4-spoke sport steering wheel. Rear ashtrays. Day-night rearview mirror. Automatic dome light switch on right-hand door.***



## Custom All-Vinyl Interior

*Custom Interior RPO Z11 features include:*

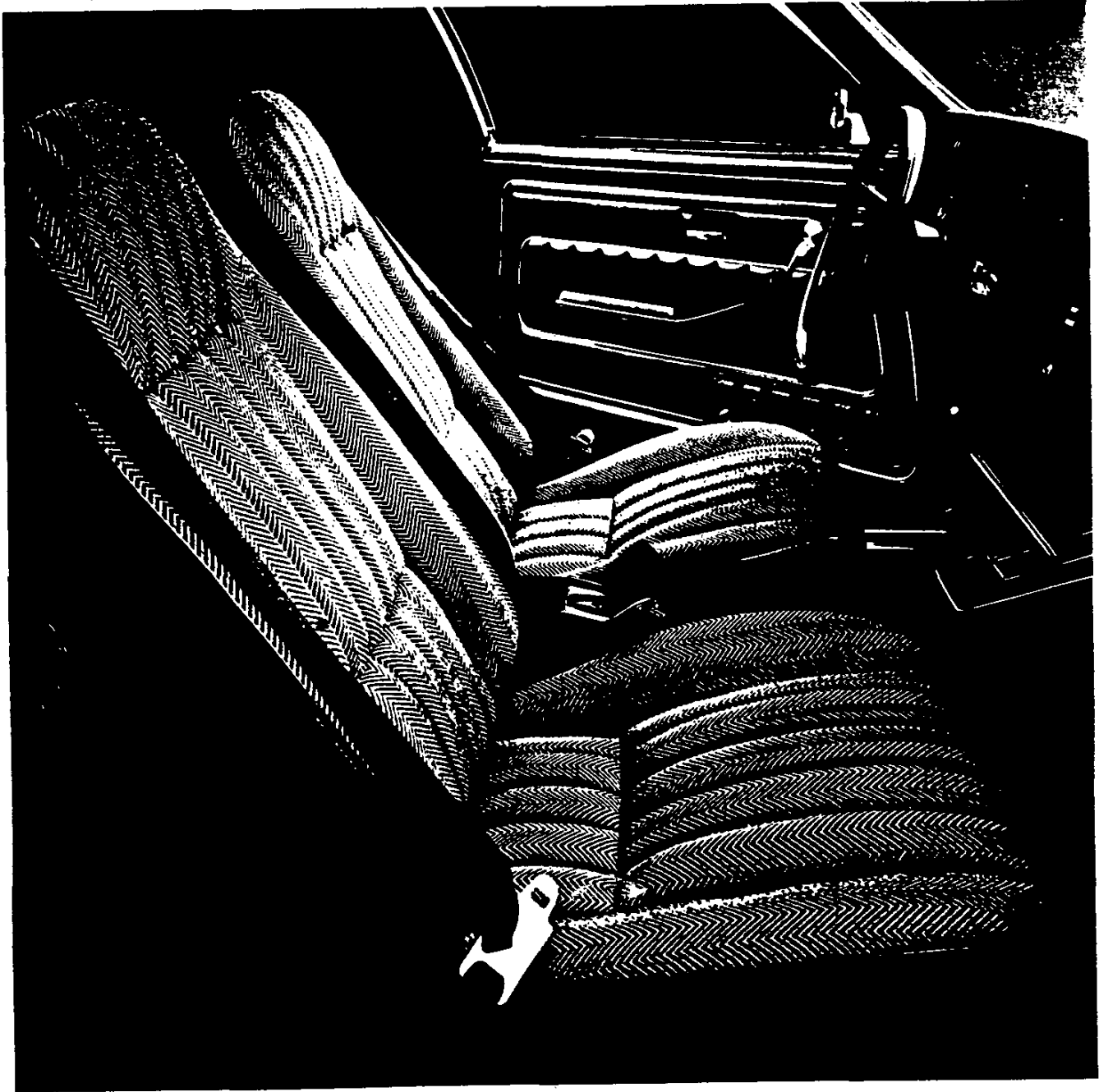
- Special contoured seats with deluxe trim
- Soft vinyl door trim with bright accents
- Door pull assist handles
- Map pockets in both doors
- Assist handle built into instrument panel pad
- Day-night rearview mirror
- Rear ashtrays
- Carpeted luggage area on Hatchback Coupe
- Sliding adjustment for passenger's bucket seat on Notchback Coupe
- Bright transmission control trim plate
- Automatic dome light switch on right-hand door
- Special sound insulation including hood insulator.



## **Custom Cloth & Vinyl Interior**

*Custom Interior RPO Z11 features include:*

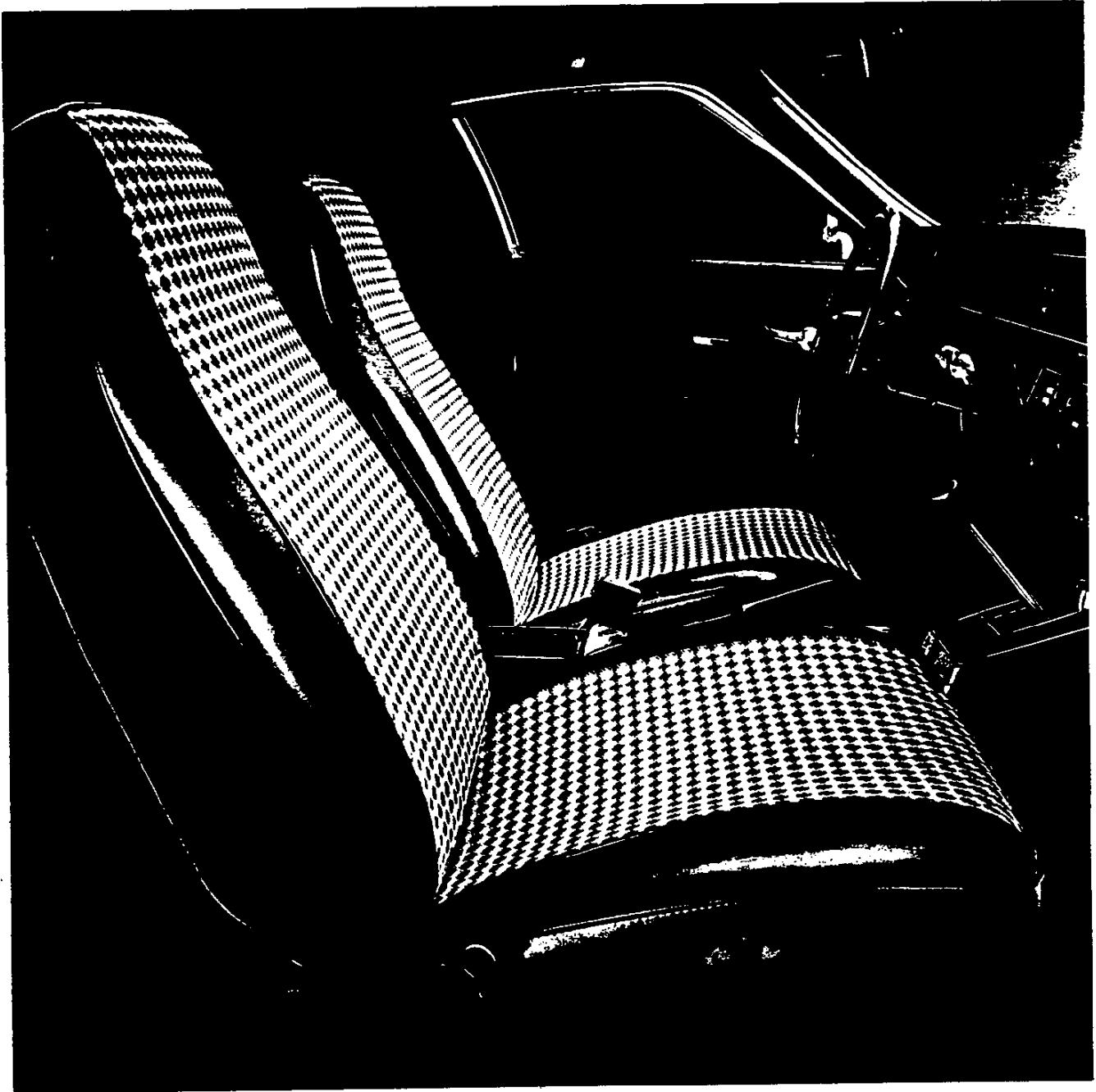
- *Special contoured seats with deluxe trim*
- *Soft vinyl door trim with bright accents*
- *Door pull assist handles*
- *Map pockets in both doors*
- *Assist handle built into instrument panel pad*
- *Day-night rearview mirror*
- *Rear ashtrays*
- *Carpeted luggage area on Hatchback Coupe*
- *Sliding adjustment for passenger's bucket seat on Notchback Coupe*
- *Bright transmission control trim plate*
- *Automatic dome light switch on right-hand door*
- *Special sound insulation including hood insulator.*



**Standard All-Vinyl Interior** (with knit-vinyl seats)



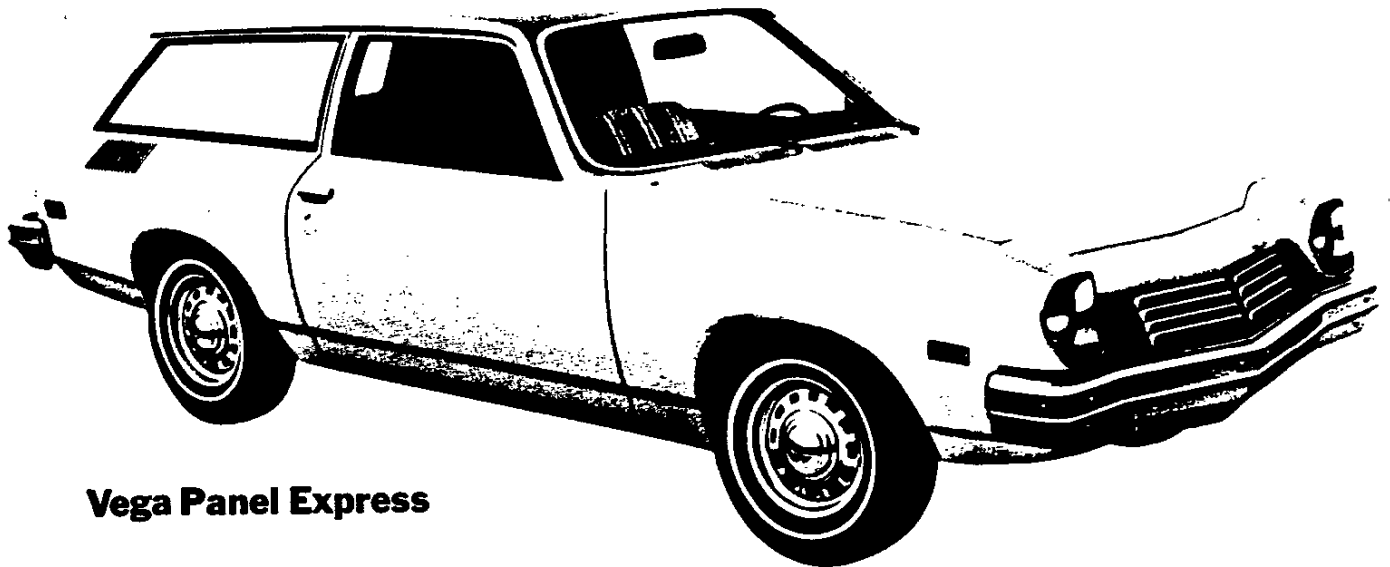
**Standard Cloth & Vinyl Interior**



---

## Panel Express Exterior Features

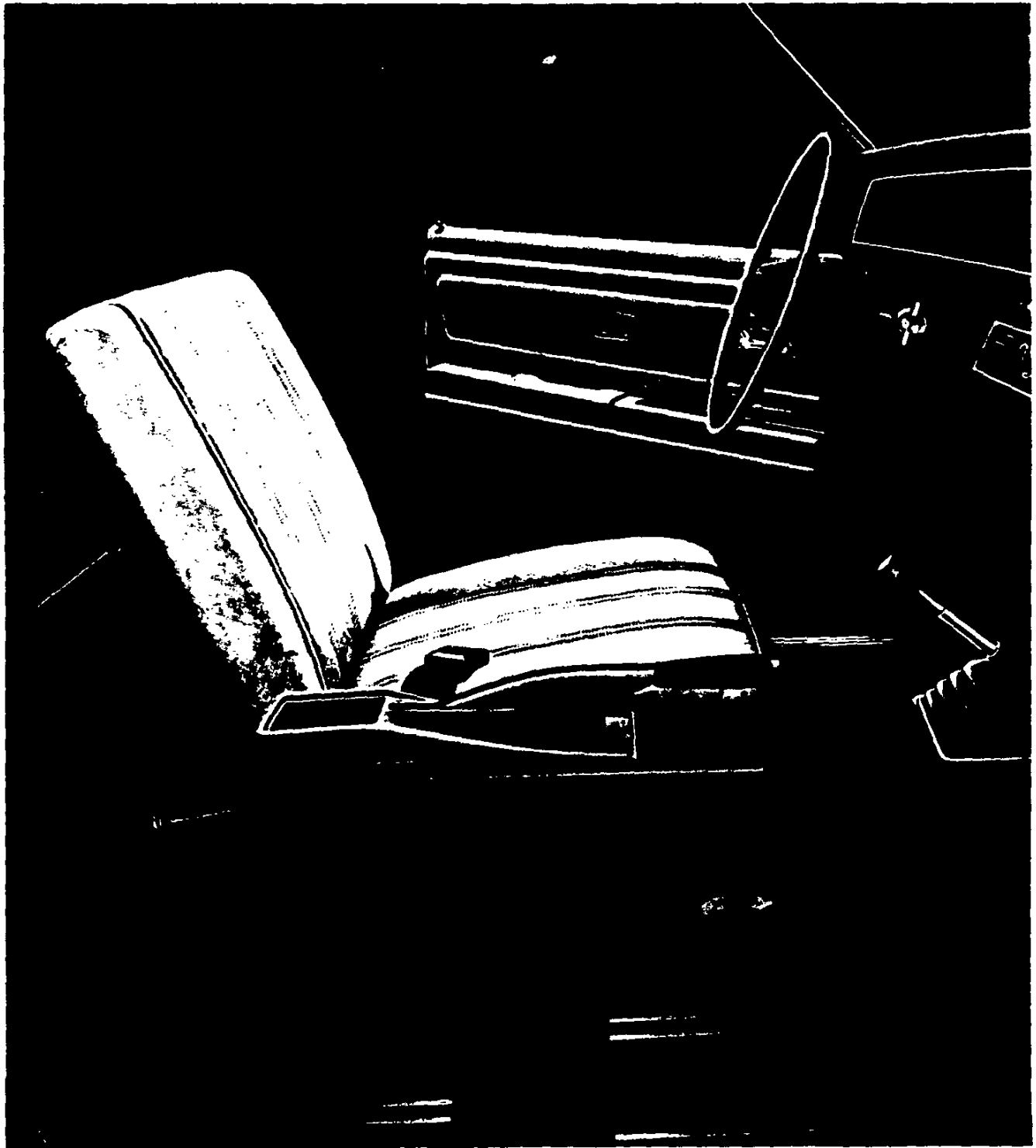
- Integrated front styling with grille louvers molded into front panel, recessed headlights and rectangular parking lights
- Improved bumper system with spring-mounted aluminum bumpers both front and rear
- Entire rear gate swings up for easy access to load compartment
- Weather-tight rear window is permanently sealed to gate
- Wide right side door that facilitates side loading
- Full door-glass styling
- Flush-mounted door handles
- Large Power-Beam single-unit headlights
- Side marker lights front and rear
- Single-unit taillight with back-up light



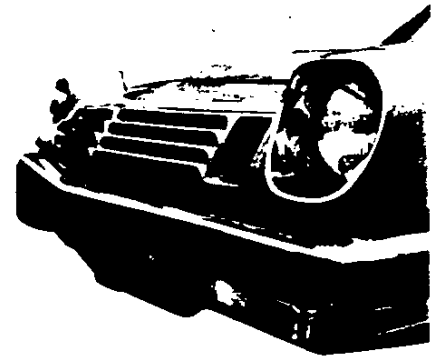
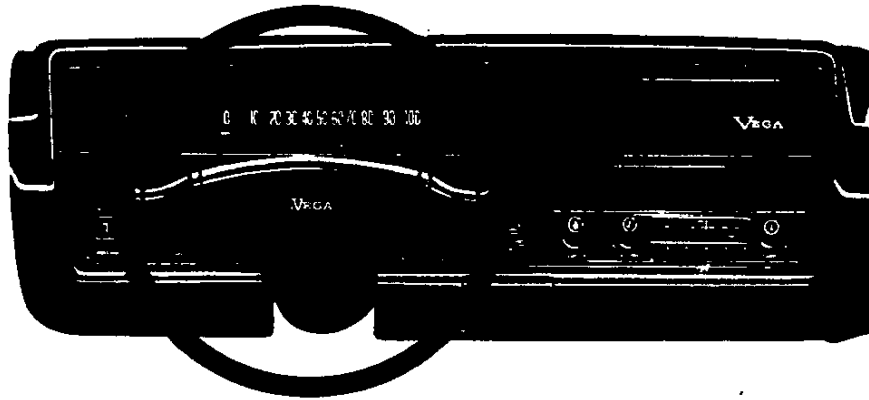
**Vega Panel Express**

## Panel Express Interior Features

- Two concealed storage areas under load floor—behind front seat and also forward of rear gate
- Color-keyed painted cargo floor and sidewalls ● Flow-through power ventilation system
- Inside hood release ● Glove compartment ● Perforated hardboard headlining ● Tunnel-mounted transmission control ● Convenient stowage well in driver's door ● Color-keyed vinyl-coated rubber front floor covering ● Recessed pull-type door handles ● 2-spoke steering wheel ● Parking brake handle on floor tunnel



# Major Features—Standard on 1974 Vega



*Energy-absorbing padded instrument panel*



*Tunnel-mounted parking brake*



*16-gallon fuel tank has filler in right rear fender*

*Aluminum Bumper*

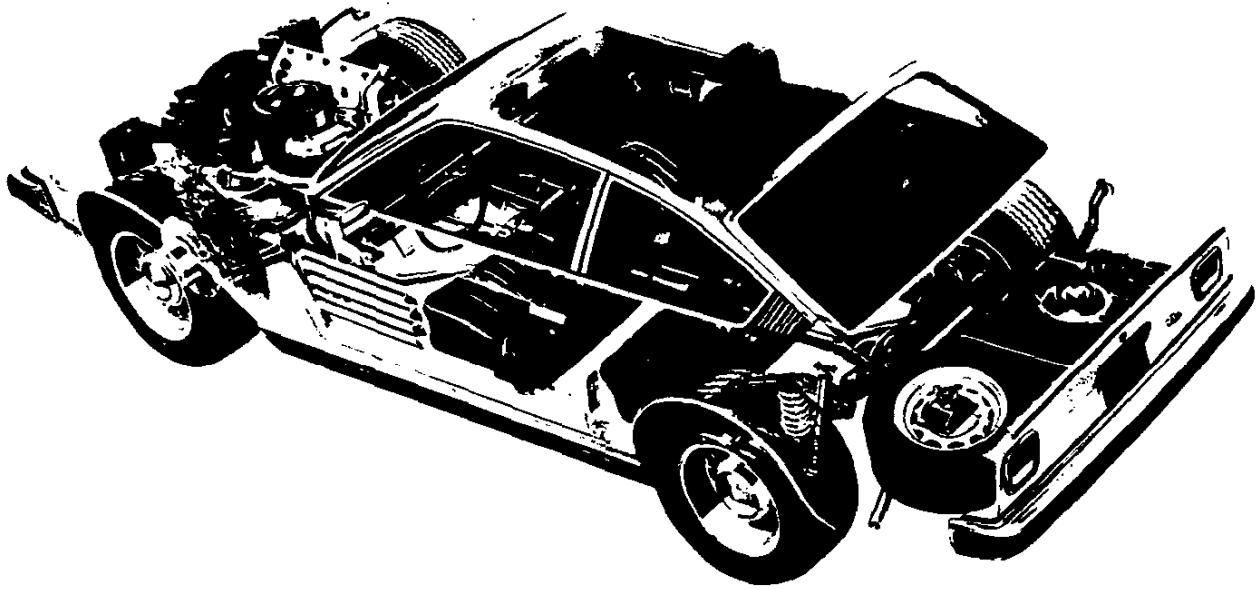


*Front disc brakes*

- Power-Beam headlights
- Bolt-on front fenders
- Self-cleaning rocker panels
- Corrosion-resistant moldings
- Thick laminate windshield
- Headlight aiming access provision
- Parking lights that illuminate with headlights
- Full Coil suspension and double-acting shock absorbers
- 97" wheelbase
- Balanced A78-13 conventional non-belted blackwall tires
- Choice of two highly advanced overhead cam 4-cylinder engines that operate on regular fuels including no-lead or low-lead

- Front disc/rear drum brake system
- Automatic choke
- Dual-speed electric windshield wipers
- Disc brake audible wear sensors signal need for lining replacement
- Flame arrestor battery caps
- Fuel filler in right rear fender
- 16-gallon fuel tank
- Electric fuel pump in gas tank. Cut-off switch stops fuel flow when engine oil pressure drops below safe limit
- Built-in blended-air heater and defroster system
- Engineered exhaust emission control
- Weather-resistant ignition system
- High-output Delcotron generator

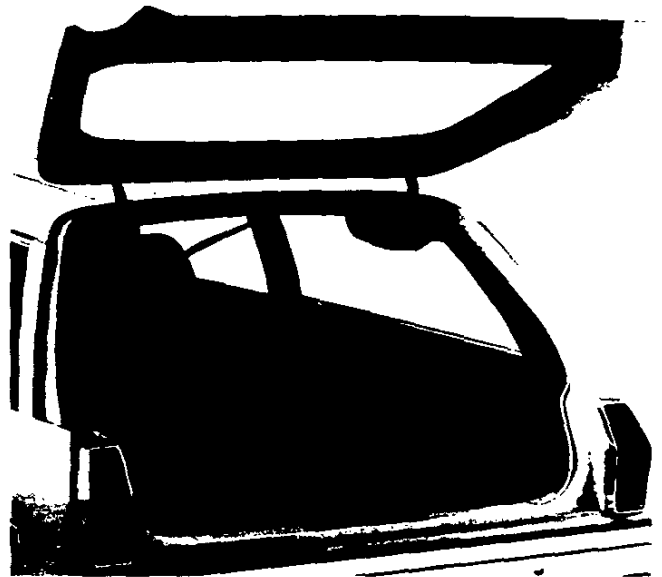
- Sealed side-terminal Energizer battery
- Recirculating ball steering with front-mounted linkage
- Positive-shift starter
- Counterbalanced crankshaft
- High-capacity positive displacement oil pump
- 50,000-mile replaceable carburetor air filter
- Permanently lubricated universal joints
- Advanced cross-flow radiator
- Water pump with aluminum housing
- Radiator drain for improved serviceability
- Dynamic drive-line damper



*Vega Hatchback Coupe shown with Custom interior*



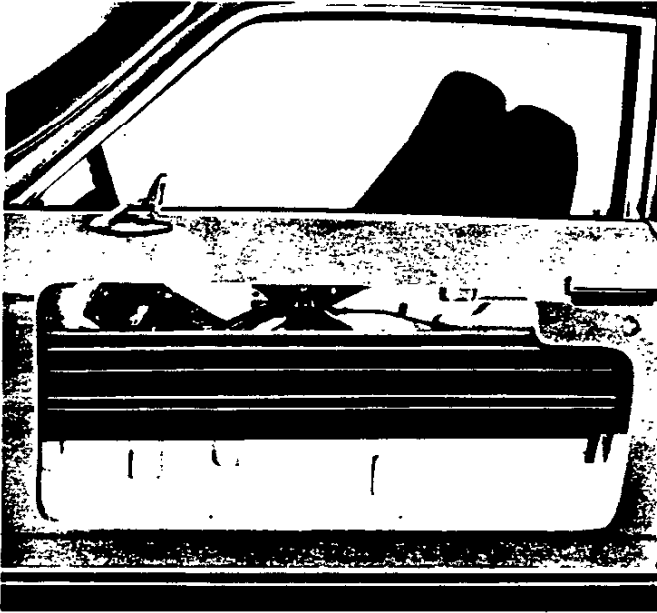
*Swing-up hatch for Hatchback Coupe features convenient hydropneumatic counterbalance*



*Swing-up liftgate for Kamback is counterbalanced for easy operation*



## Vega Safety and Security Features



Side-Guard beam door structure



Sequential front seat belt and ignition interlock system

### Occupant Protection Features

- Seat belts with pushbutton buckles for all passenger positions
- Two front combination seat and shoulder belts for driver and right front passenger (with reminder light and buzzer, inertia reel and starter interlock)
- Built-in front seat head restraints
- Energy-absorbing steering column
- Passenger-guard door locks
- Safety door latches and hinges
- Folding seat back latches
- Energy-absorbing padded instrument panel and front seat back tops
- Thick-laminate windshield
- Padded sun visors
- Safety armrests
- Safety steering wheel
- Side-Guard beams
- Cargo-Guard (Notchback Coupe only)
- Contoured windshield header
- Contoured full roof inner panel
- Fuel tank impact security
- Two front seat belt retractors
- Glove box and console door latch impact security

- Smooth-contoured door and window regulator handles
- Soft, low-profile window control knobs, coat hooks, dome light
- Shoulder belt anchorages for rear seat outboard occupants
- Pressure lock radiator cap
- High-strength front seat anchorages and construction
- High-strength rear seat retention
- Stamped steel door hinges
- Automatic locking front and rear outboard seat belt retractors

### Accident Prevention Features

- Side marker lights and reflectors (front side marker lights flash with directional signals)
- Parking lights that illuminate with headlights
- Four-way hazard warning flasher
- Back-up lights
- Lane-change feature in direction signal control
- Windshield defrosters, washers and dual-speed wipers
- Wide-view inside mirror (vinyl-edged, shatter-resistant glass and deflecting support)
- Outside rearview mirror
- Dual master cylinder brake system with warning light

- Starter safety switch
- Improved bumper systems
- Headlight aiming access provision
- Low-glare instrument panel top, inside windshield moldings, wiper arms and blades, and steering wheel metallic surfaces
- Safety wheel rims
- Uniform shift quadrant
- No winged wheel nuts, discs and caps
- Self-adjusting brakes
- Illumination of windshield wiper and washer, heater and defroster controls
- Flame-arresting battery vent caps
- Flame-retardant interior materials

### Anti-Theft Features

- Anti-theft ignition key warning buzzer
- Anti-theft steering column lock
- Inside hood latch release
- Anti-theft key system (one key for ignition only, other key for glove box, doors, and trunk)
- Visible vehicle identification
- Tamper-resistant odometer

## Vega Equipment Summary

### Exterior

	GT Versions	Hatchback	Notchback	Kammback
Painted header panel with amber lens parking lights	NA	S	S	S
Clear lens parking lights with amber bulb and bright trim	Incl.	NA	NA	NA
Black-finish body sill	Incl.	(1)	(1)	(1)
Bright belt molding	Incl.	(1)	NA	NA
Black lower body side molding	Incl.	(1)	(1)	(1)
Body-colored door handle accents	Incl.	(1)	(1)	(1)
Bright wheel opening moldings	NA	(1)	(1)	(1)
Bright side window moldings	Incl.	S	(1)	S
Body side molding with vinyl insert	EC	EC	EC	EC
Sport stripes on body sides and rear end panel or tailgate	EC	NA	NA	NA
Sports decor package	EC(2)	EC	NA	NA

### Interior

Special instrumentation and electric clock	Incl.	EC	EC	EC
Black 4-spoke Sport steering wheel	Incl.	EC	EC	EC
Swing-out rear windows	EC (2)	EC	EC	NA
Slide adjustment for passenger seat	S	S	(3,4)	S
Adjustable driver's seat back	Incl.	EC	EC	EC
Assist handle built into instrument panel pad	Incl.	(4)	(4)	(4)
Cargo area floor carpeting	(5)	(4)	NA	S

### Chassis

Special ride and handling package	Incl.	EC	EC	EC
A78-13B conventional (non-belted) blackwall tires	NA	S	S	S
A78-13B conventional (non-belted) white stripe tires	NA	EC	EC	EC
A70-13B bias belted ply white lettered tires	Incl.	(6)	(6)	(6)
BR70-13B radial ply white stripe tires	EC	EC	EC	EC
Special 13 x 6 GT wheel with trim rings	Incl.	(6)	(6)	(6)
Wheel covers	NA	EC	EC	EC
Vega 140 engine	NA	S	S	S
Vega 140-2 engine	Incl.	EC	EC	EC

(1) Included w/custom exterior—RPO ZJ2

(2) Not available for Kammback

(3) Included w/decor group—RPO YE4

(4) Included w/custom interior—RPO ZJ1

(5) Standard for Kammback

(6) Included w/special ride and handling package

S—Standard

EC—Extra Cost

NA—Not available

Incl.—Included in option package

## Vega Power Teams

Transmissions and rear axle ratios (:1)

	Engine RPO	3-Speed (std.)			4-Speed			Turbo Hydra-matic		
		Std.	Opt.	A.C.*	Std.	Opt.	A.C.*	Std.	Opt.	A.C.*
Standard Four Vega 140-1	Std. (1)	2.53 <sup>■</sup>	2.92	2.92	2.92	3.36	2.92	2.92	3.36	2.92
Optional Four Vega 140-2	L11 (1, 2)	2.92	—	2.92	2.92	3.36	2.92	2.92	3.36	2.92

Note: All ratios available with Positraction. \*Air conditioning. <sup>■</sup>2.92 ratio standard on Panel Express.  
 (1) California emission equipment required in State of California. (2) Included with GT RPO Z29.

## Engine Specifications

Engine	Type	Carburetion	HP @ RPM	Torque @ RPM	Comp. Ratio	Bore	Stroke	Displ.
Vega 140-1	4-cyl. OHC	1-barrel	75 @ 4400	115 @ 2400	8.0:1	3.501"	3.625"	140
Vega 140-2	4-cyl. OHC	2-barrel	85 @ 4400	122 @ 2400				

Note: Horsepower and Torque ratings are SAE net as installed.

## Transmissions

	Transmission gear ratios (:1)					Shift selector locations	
	1	2	3	4	R	Floor	Mini-Console
3-Speed Fully Synchronized (Standard)	3.11	1.84	1.00	—	3.22	X	
4-Speed Fully Synchronized (RPO M20)	3.11	2.20	1.47	1.00	3.11	X	
Turbo Hydra-matic (RPO M40)	Drive (max.)—5.29:1 to 1:1 Low 2—5.29:1 to 1.52:1 Low 1—5.29:1 to 2.52:1 Reverse—4.05:1 to 1.93:1						X

## Clutches for 3- and 4-Speed Transmissions

Engine	Disc facing material	Disc facing outside diameter	Disc facing total area (sq. in.)	Spring effective plate load (lbs.)
Vega 140-1	woven asbestos	8.00"	43.98	1250-1450
Vega 140-2		9.12"	71.82	

# Vega Model Options

	RPO Number	Notchback	Hatchback	Kammback	GT Versions	Panel Express
<p>Custom Exterior. Not available with LX or Estate models. Includes hood header panel bright molding; bright lower body side and wheel opening moldings; black-finished body sill and body-colored door handle accents. Hatchback also includes belt molding. Notchback also includes bright side window moldings</p>	ZJ2	X	X	X	NA	NA
<p>Custom Interior. Included with LX model. Not available with Vega Estate model. Includes luxury seat and door trim, rear ashtrays, special insulation, day-night rearview mirror and RH door automatic light switch. Hatchback also includes load compartment carpeting. Without GT, also includes sidewall trim with bright accents and assist handle built into instrument panel pad. Notchback also includes sidewall trim with bright accents; assist handle built into instrument panel pad; adjustable floor position for passenger front seat; chromed parking brake and transmission control trim plate. Kammback. Without GT, also includes sidewall trim with bright accents and assist handle built into instrument panel pad</p>	ZJ1	X	X	X	X	NA
<p>Decor Group. Not available with LX model or when custom interior with custom exterior is ordered. Without custom interior or custom exterior, includes bright side window moldings and adjustable floor position for passenger front seat. With custom interior only, includes bright window moldings. With custom exterior only, includes adjustable floor position for passenger front seat</p>	YE4	X	NA	NA	NA	NA
<p>GT. Includes Vega 140-2 engine; tachometer, ammeter and temperature gauges; electric clock; assist handle built into instrument panel pad; 4-spoke sport steering wheel; 2-position adjustable driver's seat back; wood-grained vinyl accents on instrument cluster; LH remote-control sport mirror; outside door handle colored insert; black-finished lower body side moldings; hood header panel bright molding; black-painted headlight bezels; parking lights with clear lens and amber bulbs; nameplates on front fenders; front and rear stabilizers; special GT 13" x 6" wheels with trim rings and special center caps plus A70-13B bias belted ply white lettered tires. Hatchback also includes belt molding</p>	Z29	NA	X	X	Incl.	NA
<p>Sports Decor Package. Not available with custom exterior. Includes color-keyed body side molding and body side striping. See page 21 for color availability.</p>	...	NA	X	NA	NA	NA

NA—Not Available

## Selected Options

	RPO Number	Notchback	Hatchback	Kammback	GT Versions	Panel Express
Air conditioning. Four-Season. Includes 55-amp generator and HD radiator	C60	X	X	X	X	X
Air deflector, rear window	C51	NA	NA	X	(1)	X
Battery, heavy duty—3200-watt rating	UA1	X	X	X	X	X
Bumper equipment:						
Deluxe front bumper guards	V31	X	X	X	X	X
Front and rear impact strips. Available only with Deluxe front bumper guards	VE5	X	X	X	X	X
California emission equipment	YF5	X	X	X	X	X
Carrier, roof	V55	NA	NA	X	(1)	X
Clock, electric. Included when special instrumentation is ordered	U35	X	X	X	Incl.	X
Cooling equipment. Heavy-duty radiator. Included when air conditioning is ordered	V01	X	X	X	X	X
Convenience equipment, interior. Includes molded quarter trim panel, acoustical package, cargo floor mat, rear compartment hold-open prop	YG5	NA	NA	NA	NA	X
Defogger, rear window (Electro-Clear)	C49	X	X	X	X	X
Glass, Soft-Ray tinted. All windows	A01	X	X	X	X	X
Instrumentation, special. Includes electric clock, tachometer and gauge type instruments	U14	X	X	X	Incl.	NA
Mats, color-keyed floor—2 front and 2 rear	B37	X	X	X	X	X
Mirrors:						
Rearview day-night	D31	X	X	X	X	X
Sport. LH remote control	D69	X	X	X	Incl.	X
Moldings: Not available on Vega Estate						
Body side. Includes vinyl insert	B84	X	X	X	X	X
Door edge guard	B93	X	X	X	X	X
Radio equipment:						
AM Radio	U63	X	X	X	X	X
AM/FM Radio	U69	X	X	X	X	X
Rear seat speaker	U80	X	X	X	X	X
Ride and handling package, special. Includes front and rear stabilizers, A70-13B bias belted ply white lettered tires and 13" x 6" wheels	F41	X	X	X	Incl.	NA
Roof cover, vinyl	...	NA	X	NA	(2)	NA
Seat equipment:						
Auxiliary seat, RH passenger. Includes seat belt and sunshade	A61	NA	NA	NA	NA	X
Adjustable seat back. Driver's seat only	AN6	X	X	X	Incl.	NA
Steering, power—variable-ratio	N41	X	X	X	X	X
Steering wheel. Sport (4-spoke)	N31	X	X	X	Incl.	NA
Stripes, sport—lower body side and rear panel or liftgate						
Black	D88/YF8	NA	NA	NA	X	NA
White	D88/ZR8	NA	NA	NA	X	NA
Wheel equipment:						
Trim rings	P06	X	X	X	Incl.	X
Wheel covers	P02	X	X	X	NA	X
Windows, swing-out. Rear side windows	A20	X	X	NA	(2)	NA

(1) Available on Kammback GT only.

(2) Available on Hatchback GT only.

## Tires

A78-13B original equipment white stripe. Not available when Special Ride and Handling Package is ordered	QAG	X	X	X	NA	X
A78-13B bias belted ply white stripe. Not available when Special Ride and Handling Package is ordered	QAD	X	X	X	NA	X
BR70-13B steel belted radial ply white stripe. Without GT or Special Ride and Handling Package, also includes 13" x 6" wheels	QRE	X	X	X	X	X

NA—Not Available

# Sports Decor Package Color Selection Chart

(for Hatchback Coupe only)

EXTERIOR BODY COLOR Name Code	AVAILABLE SPORTS DECOR PACKAGE				INTERIOR COLOR AVAILABILITY								
	STRIPE COLOR ORDERED	Molding Insert and Wide Stripes	Inside Stripes	Outside Stripes	Black		Green (Med.)		Neutral (Light)			Red (Med.)	Saddle (Med.)
					With Black Carpet	With Red Carpet	With Green Carpet	With Black Carpet	With Neutral Carpet	With Black Carpet	With Russet Carpet		
					LBB2 MBB2 VBB2 XBB2	VBR2	LGG2 MGG2 VGG2 XGG2 ING2	LGB2 MGB2 VGB2 XGB2	VNN2 INN2	VNB2 INB2	VNU2 INU2	XRB2	VSS2 XSS2 VSU2 XSU2
Beige, Cream 50	Black (19A)	Black	White	Black	X*		X	X	X	X	X		X
	Orange(97A)	Orange	Yellow	LightRed	X*		X	X	X	X	X		X
Blue, Medium 25	Black (19A)	Black	White	Black	X	X						X	
	Blue (24A)	Blue	White	Dark Red	X	X						X	
	Silver (14A)	Silver	Black	Silver	X	X						X	
	White (11A)	White	Black	White	X	X						X	
Blue Midnight (Metallic) 29	Blue (24A)	Blue	White	Dark Red	X	X			X	X			X*
	Orange(97A)	Orange	Yellow	LightRed					X	X			
	Silver (14A)	Silver	Black	Silver	X	X			X	X			X*
	White (11A)	White	Black	White	X	X			X	X			X*
Bronze (Metallic) 66	Black (19A)	Black	White	Black	X					X	X		X
	Orange(97A)	Orange	Yellow	LightRed	X					X	X		X
	White (11A)	White	Black	White	X					X	X		X
Gold, Light (Metallic) 53	Black (19A)	Black	White	Black	X				X	X			
	Orange(97A)	Orange	Yellow	LightRed	X				X	X			
	White (11A)	White	Black	White	X				X	X			
Green, Medium (Metallic) 47	Black (19A)	Black	White	Black	X		X	X		X			X*
	Green (48A)	Green	White	LightRed	X		X	X		X			X*
	Silver (14A)	Silver	Black	Silver	X		X	X		X			X*
	White (11A)	White	Black	White	X		X	X		X			X*
Green, Med. Dark (Metallic) 49	Green (48A)	Green	White	LightRed	X		X	X		X			X*
	Silver (14A)	Silver	Black	Silver	X		X	X		X			X*
	White (11A)	White	Black	White	X		X	X		X			X*
Orange, Bright 67	Black (19A)	Black	White	Black	X				X	X	X		X
	White (11A)	White	Black	White	X				X	X	X		X
Red, Med. (Metallic) 74	Black (19A)	Black	White	Black	X	X			X	X		X	X*
	Blue (24A)	Blue	White	Dark Red	X	X			X	X		X	X*
	Silver (14A)	Silver	Black	Silver	X	X			X	X		X	X*
	White (11A)	White	Black	White	X	X			X	X		X	X*
Red, Medium 75	Black (19A)	Black	White	Black	X	X				X*		X	
	Silver (14A)	Silver	Black	Silver	X	X				X*		X	
	White (11A)	White	Black	White	X	X				X*		X	
Silver (Metallic) 64	Black (19A)	Black	White	Black	X	X			X	X†	X	X	X*
	White (11A)	White	Black	White	X	X			X	X†	X	X	X*
Taupe, Dark (Metallic) 69	Orange(97A)	Orange	Yellow	LightRed	X*				X	X	X		X
	Silver (14A)	Silver	Black	Silver	X*					X			
	White (11A)	White	Black	White	X*				X	X	X		X
White, Antique 11	Black (19A)	Black	White	Black	X	X	X	X	X	X	X	X	X
	Blue (24A)	Blue	White	Dark Red	X	X			X	X	X	X	X
	Green (48A)	Green	White	LightRed	X		X	X		X			X
	Orange(97A)	Orange	Yellow	LightRed	X	X			X	X	X	X	X
	Silver (14A)	Silver	Black	Silver	X	X	X	X	X	X	X	X	X
Yellow, Bright 51	Black (19A)	Black	White	Black	X*				X	X	X		X*
	White (11A)	White	Black	White	X*				X	X	X		X*

\*Not available with standard vinyl interior.  
 †Not available with custom vinyl interior.

\*Not available with Russet carpet.

## Vega Cloth & Vinyl Trim Chart

**PLEASE NOTE:** The exterior and interior combinations for solid color paint shown in the chart below have been established as the combinations that would be attractive to the average customer. Orders for

non-recommended combinations may be submitted, provided the dealer initials the appropriate order form block as verification that the requested combination is definitely desired.

This procedure does not apply to orders that specify a vinyl roof cover, as the combinations shown are the only color combinations that have been approved.

Doors, sidewalls and headlining	Black				Green (Med.)	
Seat Color	Black				Green	
Instrument Panel Pad	Black				Green	Black
Passenger Area Carpeting	Black	Blue	Gold	Red	Green	Black
NOTCHBACK w/standard interior	MBB2	MBE2		MBR2	MGG2	
LX or NOTCHBACK w/custom interior	LBB2	LBE2	LBK2	LBR2	LGG2	
HATCHBACK w/standard interior	MBB2				MGG2	MGB2
HATCHBACK w/custom interior	LBB2				LGG2	LGB2
KAMMBACK w/standard interior	MBB2				MGG2	MGB2
ESTATE or KAMMBACK w/custom interior	LBB2				LGG2	LGB2

Exterior Body Color Code:	Lower	Upper						
Beige, Cream	50	50	X		X		X	X
Blue, Medium	25	25	X	X		X†		
Blue, Midnight (Metallic)	29	29	X	X		X		
Bronze (Metallic)	66	66	X					
Gold, Light (Metallic)	53	53	X		X			
Green, Medium (Metallic)	47	47	X				X	X
Green, Med. Dark (Metallic)	49	49	X				X	X
Orange, Bright	67	67	X					
Red, Med. (Metallic)	74	74	X			X		
Red, Medium	75	75	X			X		
Silver (Metallic)	64	64	X	X		X		
Taupe, Dark (Metallic)	69	69	X		X			
White, Antique	11	11	X	X	X	X	X	X
Yellow, Bright	51	51	X		X			

† Not available with custom interior

## Vinyl Roof Colors (LX or Hatchback Coupe only)

Vinyl roof*	Code	Solid exterior body color availability
Black	BB	All Exterior Colors.
Blue (Medium)	DD	11 or 29 only.
Brown	FF	11, 50, 64 or 69 only.
Cream-Beige	EE	11, 50, 53 or 69 only.
Green (Medium)	GG	11 or 49 only.
Red (Dark)	HH	11, 64 or 74 only.
Russet	LL	11 or 66 only.
Saddle (Medium)	RR	11, 49, 50, 66, 67 or 69 only.
Silver Taupe	WW	64 or 69 only.
White	AA	All Exterior Colors.

\*Includes outline and roof drip moldings.

# Vega All-Vinyl Trim Chart

Doors, sidewalls and headlining	Black			Green (Med.)		Neutral (Light)			Red (Med.)		Saddle (Med.)		
Seat Color	Black			Green	Neutral	Neutral		Red		Saddle			
Instrument Panel Pad	Black			Green	Black	Green	Neutral	Russet	Black	Red	Black	Saddle	Russet
Passenger Area Carpeting @	Black	Blue	Red	Green	Black	Green	Neutral	Russet	Black	Red	Black	Saddle	Russet
<b>NOTCHBACK</b> w/standard interior	XBB2	XBE2	XBR2	XGG2		XNG2	XNN2						XSS2
<b>LX or NOTCHBACK @</b> w/custom interior	VBB2	VBE2	VBR2	VGG2			VNN2						VSS2
<b>HATCHBACK</b> w/standard interior	XBB2			XGG2	XGB2	XNG2	XNN2	XNU2	XNB2	XRR2	XRB2	XSS2	XSU2
w/custom interior	VBB2		VBR2*	VGG2	VGB2		VNN2	VNU2	VNB2			VSS2	VSU2
<b>KAMMBACK</b> w/standard interior	XBB2			XGG2	XGB2	XNG2	XNN2	XNU2	XNB2	XRR2	XRB2	XSS2	XSU2
<b>ESTATE or KAMMBACK</b> w/custom interior	VBB2		VBR2*	VGG2	VGB2		VNN2	VNU2	VNB2			VSS2	VSU2

## Exterior Body Color Code: Lower Upper

	Lower	Upper													
Beige, Cream	50	50	X●			X	X	X	X	X	X			X	X
Blue, Medium	25	25	X	X	X†							X	X		
Blue, Midnight (Met.)	29	29	X	X	X				X					X	
Bronze (Metallic)	66	66	X						X	X				X	X
Gold, Light (Metallic)	53	53	X						X						
Green, Med. (Metallic)	47	47	X			X	X	X	X					X	X●
Green, Med. Dk. (Met.)	49	49	X			X	X	X	X					X	X●
Orange, Bright	67	67	X						X	X	X			X	X
Red, Med. (Metallic)	74	74	X		X				X		X	X	X	X	
Red, Medium	75	75	X		X				X		X●	X	X		
Silver (Metallic)	64	64	X	X	X				X	X	X†	X	X	X	X●
Taupe, Dark (Metallic)	69	69	X●						X	X	X			X	X
White, Antique	11	11	X	X	X	X	X	X	X	X	X	X	X	X	X
Yellow, Bright	51	51	X●						X	X	X			X	

@ Accent carpeting for custom interior in LX or Notchback Coupe also available in Gold (VBK2) with Beige, Gold, Taupe, White or Yellow exterior colors—plus Russet (VBU2) with Bronze, Orange, Silver or White exterior colors.  
 \* With red seat welts. ● Not available with standard interior. † Not available with custom interior.

### VEGA PANEL EXPRESS

Standard seat trim for Panel Express is Pearl all-vinyl with either a Black or a Green interior. All exterior body colors except Cream Beige are available with the Black interior. Only Cream Beige, Green or White are recommended with the Green interior. Dark Taupe and Bright Yellow exterior colors are not recommended for the Panel Express—however, they may be ordered if the dealer initials the appropriate order form block as verification that these colors are definitely desired.



## Vega Specifications

Exterior Dimensions	Notchback	Hatchback	Kammback	Panel Express
Wheelbase	97.0	97.0	97.0	97.0
Length (overall)	175.4	175.4	175.4	175.4
Width (overall)	65.4	65.4	65.4	65.4
Height (loaded)	51.9	50.0	52.0	52.0
Tread—Front	55.2	55.2	55.2	55.2
Tread—Rear	54.1	54.1	54.1	54.1
Ground clearance (min.)	4.6	4.6	4.9	4.6

### Interior Roominess

Head room—Front	38.3	37.4	38.4	38.0
Head room—Rear	38.6	36.6	37.7	—
Leg room—Front	42.1	42.3	42.1	42.0
Leg room—Rear	32.2	30.4	32.8	—
Hip room—Front	49.2	49.3	49.2	49.2
Hip room—Rear	42.5	42.5	42.5	—
Shoulder room—Front	51.6	51.6	51.6	51.6
Shoulder room—Rear	49.5	49.5	49.5	—
Luggage space—effective (cu. ft.)	8.7	9.3 <sup>†</sup>	24.8 <sup>††</sup>	50.2 <sup>†††</sup>

<sup>†</sup>18.9 with rear seat folded down.

<sup>††</sup>50.2 with rear seat folded down.

<sup>†††</sup>68.7 including passenger seat floor area.

### Kammback and Panel Express Cargo Compartment

Floor length—front seat to liftgate	66.3	67.7
Width between wheelhouses	42.5	42.5
Height—floor to roof (max.)	28.6	28.6
Liftgate loading height	22.8	22.8
Liftgate opening height	25.7	25.7
Liftgate opening width at belt	47.0	47.0

### Glass Area

Windshield glass area (sq. in.)	1116.2	1143.9	1116.2	1116.2
Rear window glass area (sq. in.)	973.8	1071.3	662.5	662.5
Total glass area (sq. in.)	3635.4	3549.6	3840.7	2735.1

### Tire Size and Steering

Standard tire size	A78-13	A78-13*	A78-13*	A78-13
Turning circle—curb-to-curb (ft.)	33.0	33.0	33.0	33.0
Turning circle—wall-to-wall (ft.)	34.7	34.7	34.7	34.7
Steering ratio—std. (overall)	22.5:1	22.5:1	22.5:1	22.5:1
Steering ratio—power (overall)	16.5:1 to 13.5:1	16.5:1 to 13.5:1	16.5:1 to 13.5:1	16.5:1 to 13.5:1

\*A70-13 wide-oval tires and 13 x 6 wheels included with GT option.

### Capacities and Weights

Rated fuel tank capacity (gallons)	16	16	16	16
Crankcase oil change (qts.)	3*	3*	3*	3*
Cooling system (qts.)	6.5**	6.5**	6.5**	6.5**
Curb weight (lbs.)	2441	2510	2581	2474
Shipping weight (lbs.)	2368	2439	2508	2401

\*4 with filter change.

\*\*7½ with air conditioning.

# 1974 MVMA Specifications Form

## Passenger Car

<b>Manufacturer</b> <b>Chevrolet Motor Division</b> <b>General Motors Corporation</b>	<b>Car Line</b>  <b>VEGA</b>	
<b>Mailing Address</b> <b>Chevrolet Engineering Center</b> <b>30003 Van Dyke</b> <b>Warren, Michigan 48090</b>	<b>Model Year</b>  <b>1974</b>	<b>Issued:</b> <b>September 1973</b> <b>Revised (e)</b> <b>January, 1974</b>

The information contained herein is prepared, distributed by, and is solely the responsibility of the automobile manufacturing company to whose products it relates. Questions concerning these specifications should be directed to the manufacturer whose address is shown above. This specification form was developed by automobile manufacturing companies under the auspices of the Motor Vehicle Manufacturers Association.

**Revised pages attached** 4, 5, 6, 7, 8, 9, 10, 11, 12, 13, 14, 15, 16, 17, 18, 20, 23, 24, 26, 27.

# MVMA Specifications Form

## Passenger Car

### Table Of Contents

---

1	Car Models
2, 3	Car and Body Dimensions
4	Power Teams
5—9	Engine
9	Exhaust System
10	Fuel System
11	Cooling System
12, 13	Vehicle Emission Control
14—16	Electrical
17—19	Drive Units
20	Tires and Wheels
20, 21	Brakes
22	Steering
23	Suspension — Front and Rear
24	Frame
24	Body — Miscellaneous Information
25	Convenience Equipment
25	Lamp Height and Spacing
26	Vehicle Weights
27	Optional Equipment Weights
29, 30, 31	Car and Body Dimension Key Sheets
32	Index

---

#### NOTES:

1. The General Specifications herein are those in effect at date of compilation and are subject to change without notice by the manufacturer.
2. UNLESS OTHERWISE INDICATED.
  - a. Specifications apply to standard models without optional equipment. Significant deviations are noted.
  - b. Nominal design dimensions are used throughout these specifications.
  - c. All dimensions are in inches

**MVMA Specifications Form  
Passenger Car**

Car Line VEGA  
 Model Year 1974 Issued 9/73 Revised (•) \_\_\_\_\_

**Car Models**

Model Description	Make, Car line, Series, Body Type (Mfr's Model Code)	Max. Number of Passengers (Front/Rear)	
	<u>Models</u>	<u>Front</u>	<u>Rear</u>
<u>VEGA</u>			
2-Door Notchback (Coupe)	IHV11	2	2
2-Door Hatchback (Coupe)	IHV77	2	2
2-Door Kammback Station Wagon 2-Seat	IHV15	2	2
2-Door Panel Express	IHV05	1	-

**NOTE: ANY SPECIFICATIONS ON THE FOLLOWING PAGES THAT ARE SPECIFIC TO CALIFORNIA REQUIREMENTS ARE INDICATED ACCORDINGLY.**

# MVMA Specifications Form Passenger Car

Car Line VEGA  
Model Year 1974 Issued 9/73 Revised (•) \_\_\_\_\_

## Car and Body Dimensions See Pages 29 - 31 for SAE Dimension Definitions

All dimensions to ground are for comparative purposes only. Dimensions are to be shown for: 4-Dr. Sedan, 2-Dr. H.T., 4-Dr. H.T., Convertible and Station Wagon.

SAE Ref. No.	Body Type			
	2-Door Notchback Coupe	2-Door Hatchback Coupe	2-Door Station Wagon	2-Door Panel Delivery

### Width

Tread - Front	W101	55.2
Tread - Rear	W102	54.1
Maximum overall car width	W103	65.4
Body width at No. 2 pillar	W117	64.6
Max. front doors open	W120	146.8
Max. rear doors open	W121	---

### Length

Body "O" to front of dash	L 30	-0.8
Wheelbase	L101	97.0
Overall car length	L103	175.4 (with Impact strips 176.4)
Overhang - front	L104	35.2 (with Impact strips 35.7)
Overhang - rear	L105	43.2 (with Impact strips 43.7)
Body upper structure length	L123	93.2      95.1      108.0
Body "O" line to C L of rear wheel	L127	86.0
Body "O" line to w/s cowl point	L130	12.0

### Height

Passenger Distribution (front & rear)	*	2-2	1-0
Trunk Cargo load (lbs.)	*	200	
Overall height	H101	51.9	52.0
Cowl height	H114	35.1	35.4
Deck height	H138	4.3	4.4
Rocker panel - front	H112'	To ground 6.4	6.7
		From front wheel C/L	
Bottom of front door to ground	H133	9.2	8.9
Rocker panel - rear	H111	To ground 5.9	5.6
		From rear wheel C/L	
Bottom of rear door to ground	H135	---	
Windshield slope angle	H122	35.0	35.0

### Ground Clearance

Bumper to ground - front	H102	14.7	15.5
Bumper to ground - rear	H104	12.8	15.2
Angle of approach	H106	19°48'	20°20'
Angle of departure	H107	20°44'	19°49'
Ramp breakover angle	H147	13°50'	14°50'
Rear axle differential to ground	H153	6.8	6.4
Min. running clearance (Specify)	H156	4.6 (a)	4.6 (b)

\*All measurements are made at the stated passenger and trunk/cargo loadings

(a) Exhaust X over pipe

(b) Rear Suspension

# MVMA Specifications Form Passenger Car

Car Line VEGA  
Model Year 1974 Issued 9/73 Revised (•) \_\_\_\_\_

**Car And Body Dimensions** See Pages 29 - 31 for SAE Dimension Definitions

SAE Ref. No.	Body Type			
	2-Door Notchback Coupe	2-Door Hatchback Coupe	2-Door Station Wagon	2-Door Panel Delivery

## Front Compartment

H Point to body "O" line	L31	42.8	42.9	42.8	
Effective head room	H61	38.3	37.4	38.4	38.0
Max. eff. leg room - accelerator	L34	42.1	42.3	42.1	42.0
H Point to Heel point	H30	8.7	7.7	8.5	8.1
H Point travel	L17			5.0	
Shoulder room	W3			51.6	
Hip room	W5	49.2	49.3		49.2
Upper body opening to ground	H50	47.2	45.9		47.2

## Rear Compartment

H Point couple distance	L50	29.0	27.8	29.4	--
Effective head room	H63	38.6	36.6	37.7	--
Min. effective leg room	L51	32.2	30.4	32.8	--
H Point to Heel point	H31	9.9	9.1	10.9	--
Min. knee room	L48	-1.4	-2.0	-1.7	--
Rear Compartment room	L3	26.2	24.1	24.0	--
Shoulder room	W4		49.5		--
Hip room	W6		42.5		--
Upper body opening to ground	H51			--	

## Luggage Compartment

Usable luggage capacity (cu. ft.)	V1	8.7	9.3*	50.2+	50.2 @
Liftover height	H195		28.5		22.6
Position of spare tire storage		Flat in recessed area of compartment floor			
Method of holding lid open		Telescoping gas springs		Torsion Rods	

## Station Wagon — Third Seat

Shoulder Room	W85	
Hip room	W86	NOT
Effective leg room	L86	
Effective head room	H86	AVAILABLE
Seat facing direction		

## Station Wagon — Cargo Space

Cargo length at floor - front seat	L202		66.3	67.7
Cargo length at belt - front seat	L204		58.3	61.8
Cargo width - Wheelhouse	W201		42.5	42.5
Opening width at belt	W204		47.0	47.0
Maximum cargo height	H201		28.6	28.6
Rear opening height	H202		25.7	25.7
Cargo volume index (cu. ft.) W4 x L204 x H201 1728	V2		50.2	50.2 @

\* - With rear seat up, 18.9 seat down.

+ - Rear seat folded, rear seat up 24.8

@ - 68.7 includes front seat floor area.

# MVMA Specifications Form

## Passenger Car

Car Line VEGA  
 Model Year 1974 Issued 9/73 Revised (•) \_\_\_\_\_

### Power Teams (Indicate whether standard or optional)

SAE Net bhp (brake horsepower) and net torque corrected to 85° F and 29.38 in. Hg atmospheric pressure.

SERIES AVAILABILITY	ENGINE					TRANSMISSION	AXLE RATIO**		
	Displ. cu. in.	Carb.	Compr. Ratio	SAE Net @ RPM			Std.	Opt.	A/C
				BHP	Torque				
All Models (standard)	140 L-4 (L13)	One; 1 bbl	8.00:1	75	115	3-Spd. manual (3.11:1 low)	2.53(a)	2.92	2.92
				@ 4400	@ 2400	4-Spd. manual* (3.11:1 low)	2.92	3.36	2.92 3.36
						3-Spd. automatic*			
All Models (Optional)	140 L-4 (L-11)	One; 2-bbl	8.00:1	85	122	3-Spd. manual (3.11:1 low)	2.92	NA	2.92
				@ 4400	@ 2400	4-Spd. manual*	2.92	3.36	2.92 3.36
						3-Spd. automatic*			
*-Optional **-Positraction available optionally for all models (a)-2.92 ratio on Panel Express									

**MVMA Specifications Form  
Passenger Car**

Car Line VEGA  
Model Year 1974 Issued 9/73 Revised (•) \_\_\_\_\_

Engine Displacement

L4-140 C. I.

**Engine - Piston Rings**

Function (top to bottom)	No. 1. oil or comp.	Compression
	No. 2. oil or comp.	Compression
	No. 3. oil or comp.	Oil
Compression	Description - <b>Upper</b> material, coating, etc.	<b>Cast alloy iron, barrel face; chrome plated</b>
	<b>Lower</b>	<b>Cast alloy iron, barrel face, inside bevel; chrome flash</b>
	Width	<b>.0775-.0780</b>
	Gap	<b>Upper .015-.025; Lower .009-.019</b>
Oil	Description - material, coating, etc.	<b>Multi-piece (2 rails and 1 spacer expander) Rails-steel, chrome plated OD; expander-stainless steel</b>
	Width	<b>.1870-.1890 (assembled)</b>
	Gap	<b>.010-.030</b>
	Expanders	<b>In oil ring assembly</b>

**Engine - Piston Pins**

Material		Chromium steel
Length		2.740-2.760
Diameter		.9270-.9273
Type	Locked in rod, in piston, floating, etc.	Locked in rod
	Bushing	None
		None
Clearance	In piston	.00030-.00040
	In rod	---
Direction & amount offset in piston		Major thrust side .060

**Engine - Connecting Rods**

Material		Drop forged steel
Weight (oz.)		14.24
Length (center to center)		5.695-5.705
Bearing	Material & Type	<b>Steel backed with aluminum or copper lead lining equivalent</b>
	Overall length	<b>.807</b>
	Clearance (limits)	<b>.0007-.0027</b>
	End Play	<b>.0009-.0013</b>



**MVMA Specifications Form**  
**Passenger Car**

Car Line VEGA  
 Model Year 1974 Issued 9/73 Revised (•) \_\_\_\_\_

Engine Displacement

L4-140 C.I.

**Engine — General**

Type, no. cyls., valve arr.		In-line 4 cyl. overhead camshaft
Bore and stroke (nominal)		3.501 x 3.625
Piston displacement, cu. in.		140
Bore spacing (C/L to C/L)		4.00
No. system (front to rear)	L. Bank	1-2-3-4
	R. Bank	In line
Firing Order		1-3-4-2
Cylinder Head Material		High chrome cast alloy, iron
Cylinder Block Material		Die cast high-silicon aluminum alloy
Cyl. Sleeve-Wet, dry, none		None
Number of mtg. points	Front	Two
	Rear	One
Engine installation angle		3°50'
Taxable horsepower	Dia 2 x No. Cyl. 2.5	19.6
Recommended fuel regular — premium		Unleaded or low lead
Cylinder Head Volume (cc)		73.92
Head Gasket Thickness (Compressed)		.044
Head Gasket Volume (cc)		7.26
Deck Clearance (minimum) (above or below block)		.01149 (above)
Minimum Combustion Chamber Volume (cc)		71.1

**Engine — Pistons**

Material		Cast aluminum alloy	
Description and finish		Flat head, iron plated open skirt	
Weight (piston only) oz		14.08	
Clearance (limits)	Top land	.0300-.0360	
	Skirt	Top	.0018-.0028 (a)
		Bottom	—
Ring groove diameter	No. 1 ring	3.130-3.140	
	No. 2 ring	3.130-3.140	
	No. 3 ring	3.080-3.090	

(a) Measured 1.50 from top of piston

# MVMA Specifications Form Passenger Car

Car Line VEGA  
Model Year 1974 Issued 9/73 Revised (e)

Engine Displacement		
L4-140 C. I.		
L13		L11

## Engine—Valve System

Hydraulic lifters (Std., opt., NA)		NA		
Valve rotator, type (intake, exhaust)		None		
Rocker ratio		None		
Operating tappet clearance (indicate hot or cold)	Intake	.015 (cold) .015 (running)		
	Exhaust	.030 (cold) .016 (running)		
Timing (based on top of ramp points)	Intake	Opens (*BTC)	22°	28°
		Closes (*ABC)	58°	70°
		Duration (deg.)	260°	278°
	Exhaust	Opens (*BBC)	92°	91°
		Closes (*ATC)	48°	55°
		Duration (deg.)	320°	326°
	Valve open overlap (deg.)		70°	83°
Intake	Material		Alloy steel with stellite seat material	
	Overall length		4.590-4.610	
	Actual overall head dia.		1.615-1.625	
	Angle of seat & face (deg.)		46° -seat; 45° -face	
	Seat insert material		None	
	Stem diameter		.3410-.5417	
	Stem to guide clearance		.0010-.0027	
	Lift (@ zero lash)		.4199	.4367
	Outer spring press. & length	Valve closed (lb. @ in.)	71-79 @ 1.746	
		Valve open (lb. @ in.)	183-197 @ 1.310	
	Inner spring press. & length	Valve closed (lb. @ in.)	Spring damper	
		Valve open (lb. @ in.)	Spring damper	
	Exhaust	Material		High alloy steel, chrome flash stem (a)
Overall length		4.576-4.596		
Actual overall head dia.		1.370-1.380		
Angle of seat & face (deg.)		46° seat; 45° face		
Seat insert material		None		
Stem diameter		.3410-.3417		
Stem to guide clearance		.0010-.0027		
Lift (@ zero lash)		.4302	.4379	
Outer spring press. & length		Valve closed (lb. @ in.)	71-79 @ 1.746	
		Valve open (lb. @ in.)	183-197 @ 1.310	
Inner spring press. & length		Valve closed (lb. @ in.)	Spring damper	
		Valve open (lb. @ in.)	Spring damper	

(a) Stellite seat material

**MVMA Specifications Form  
Passenger Car**

Car Line VEGA  
 Model Year 1974 Issued 9/73 Revised (•)

**Engine Displacement**

**L4-140 C.I.**

**Engine—Crankshaft**

Material		Cast nodular iron	
Vibration damper type		None	
End thrust taken by bearing (No.)		4	
Crankshaft end play		.002-.008	
Main bearing	Material & type	Steel backed insert; copper lead alloy lining	
	Clearance	Precision removable .0003-.0029	
	Journal dia. and bearing overall length	No. 1	2.3004x.752
		No. 2	2.3004x.752
		No. 3	2.3004x.752
		No. 4	2.3004x.760
		No. 5	2.3004x.864
		No. 6	None
		No. 7	None
	Dir. & amt. cyl. offset	None	
No. bolts/main brg cap	10 bolts/5 caps		
Crankpin journal diameter		1.999-2.000	

**Engine—Camshaft**

Location		In cylinder head	
Material		Cast alloy iron	
Bearings	Material	Steel bucket babbitt	
	Number	5	
Type of Drive	Gear or chain	Fiberglass reinforced cog timing belt	
	Crankshaft gear or sprocket material	Sintered iron sprocket	
	Camshaft gear or sprocket material	Sintered iron sprocket	
	Timing chain	No. of links	91 teeth
		Width	.954-1.031
		Pitch	.500

**MVMA Specifications Form**  
**Passenger Car**

Car Line VEGA  
Model Year 1974 Issued 9/73 Revised (•) \_\_\_\_\_

Engine Displacement

L4-140 C.I.

**Engine — Fuel System**

(See supplemental page for Details of Fuel Injection, Supercharger, etc. if used)

Induction type: Carburetor, fuel injection, supercharger.		<b>Carburetor</b>	
Fuel Tank	Refill capacity (U. S. gals.)	<b>16 (approximately)</b>	
	Filter location	<b>Right rear quarter panel</b>	
Fuel Pump	Type (elec. or mech.)	<b>One electric</b>	
	Locations	<b>Mounted in fuel tank</b>	
	Pressure range	<b>3-4-1/2 PSI @ 12.5 volts (c)</b>	
Vacuum booster (std., optional, none)		<b>None</b>	
Fuel Filter	Type	<b>Mesh plastic strainer (a)</b>	
	Locations	<b>In fuel tank (a)</b>	
Carburetor	Choke type		<b>Automatic</b>
	Intake manifold heat control (exhaust or water)		<b>Water</b>
	Air cleaner type	Standard	<b>One piece welded unit (b)</b>
		Optional	
	Idle speed (spec. neutral or drive)	Manual	<b>700</b>
		Automatic	<b>750</b>
Idle A/F mix.		<b>Not specified</b>	

**Carburetor Supplementary Information**

Model Usage	Engine Dispt.	Transmission	Carburetors		No. Used and Type	Barrel Size
			Make	Model		
ALL MODELS	140 L13	Manual	Rochester	7044023 (7044323)	One; 1-bbl	1.44
		Automatic		7044024 (7044324)		
	140 L11	Manual	Rochester	338179 (338181)	One; 2-bbl	Prim 1.24 Sec. 1.40
		Automatic		338168 (338170)		

NOTE: Data bracketed ( ) pertains to engine application specific to California

(a) Additional paper element in carburetor inlet for L4-140 C.I.

(b) Contains oil-wetted paper element

**MVMA Specifications Form**  
**Passenger Car**

Car Line VEGA  
 Model Year 1974 Issued 9/73 Revised (•) \_\_\_\_\_

**Engine Displacement**

L4-140 C.I.

**Engine — Lubrication System**

Type of lubrication (splash, pressure, nozzle)	Main bearings	Pressure
	Connecting rods	Pressure
	Piston pins	Splash
	Camshaft bearings	Pressure
	Tappets	Splash
	Timing gear or chain	None
	Cylinder walls	Splash
Oil pump type	Eccentric inside-outside gear; driven by crankshaft	
Normal oil pressure (lb. @ engine rpm)	40 PSI @ 100°	
Oil press. sending unit (elect. or mech.)	Electric	
Type oil intake (floating, stationary)	Stationary	
Oil filter system (full flow, part., other)	Full flow	
Filter replacement (element, complete)	Complete	
Capacity of c/case, less filter-refill (qt.)	3	
Oil grade recommended (SAE viscosity and temperature range)	20° F and above-10W-30, 10W-40, 20W-20, 20W-40, 20W-50 0° to 60° F - 10W; 5W-30, 10W-30, 10W-40 Below 20° F-5W-20, SW-30	
Engine service reqmt. (SD, SE, etc.)	SE	

**Engine — Exhaust system**

Type (single, single with cross-over, dual, other)	Single	
Muffler No. & type (reverse flow, straight thru, separate resonator)	One reverse flow	
Exhaust pipe dia (O.D., wall thick.)	Branch	None
	Main	1.75x.063
Tail pipe dia. (O.D. & wall thickness)	1.50x.068	

# MVMA Specifications Form Passenger Car

Car Line VEGA  
 Model Year 1974 Issued 9/73 Revised (•)

Engine Displacement

L4-140 C. I.

## Vehicle Emission Control

Exhaust Emission Control	Type (Air injection, engine modifications, other)		Engine modifications
	Air Injection Pump	Type	Controlled Combustion System
		Displacement	
		Drive ratio	
		Drive type	
		Relief valve (type)	
	Air Injection System	Filter (describe)	
		Air distribution (head, manifold, etc.)	
		Point of entry	
		Injection tube i.d.	
		Check valve type	
	Exhaust Gas Recirculation System	Backfire protection (type):	
		Type (controlled flow, open orifice, other)	Controlled flow
		Valve type	Vacuum modulated shut off and metering valve
		Valve location	Left front of inlet manifold
		Control energy source	Carburetor vacuum
		Exhaust source	Manifold
		Exhaust cooler type	None
	Other All	Orifice no. and size	One; .030
		Point of exhaust injection (spacer, carburetor, manifold, other)	Inlet manifold
Carburetor		Thermostatically controlled air cleaner regulates & mixes heated air with incoming cold air to reduce hydrocarbon	
Heated Air			
Transmission		Regulates vacuum to distributor vacuum advance to reduce hydrocarbon and oxides of nitrogen emissions in low and intermediate speed ranges	
Crankcase Emission Control	Type (ventilates to atmos., induction system, other)	Standard	Induction System
		Optional	
	Control Unit	Make and model	AC Spark Plug 6486955
		Location	Front camshaft cover
		Energy source (manifold vacuum, carburetor, other)	Manifold vacuum
		Control method (variable orifice, fixed orifice, other)	Variable orifices
	Complete System	Discharges (to intake manifold, other)	Intake manifold
		Air inlet (breather cap, other)	Carburetor air cleaner
		Flame arrestor (screen, other)	Screen

# MVMA Specifications Form

## Passenger Car

Car Line VEGA  
 Model Year 1974 Issued 9/73 Revised (•) \_\_\_\_\_

### Engine Displacement

**L4-140 C.I.**

### Engine — Cooling System

Type system (pressure, pressure vented, atmospheric, other)		<b>Pressure-vented thru coolant recovery system</b>	
Radiator cap relief valve pressure		<b>15±1PSI</b>	
Circulation thermostat	Type (choke, bypass)	<b>Choke</b>	
	Starts to open at (°F)	<b>192°-198°</b>	
Water pump	Type (centrifugal, other)	<b>Centrifugal</b>	
	GPM <b>2000</b> pump rpm	<b>14.7</b>	
	Number of pumps	<b>One</b>	
	Drive (V-belt, other)	<b>Multiple 'V' drive in backside of camshaft timing belt</b>	
Bearing type		<b>Permanently lubricated double row ball</b>	
By-pass recirculation type (inter., ext.)		<b>Internal</b>	
Radiator core type (cross-flow, vertical, cellular, tube and fin, other)		<b>Tube and center; cross flow</b>	
Cooling system capacity	With heater (qt.)	<b>8.6</b>	
	Without heater (qt.)	<b>---</b>	
	Opt. equipment-specify (qt.)	<b>9.0</b>	
Water jackets full length of cyl. (yes, no)		<b>Yes</b>	
Water all around cylinder (yes, no)		<b>Yes</b>	
Radiator nose	Lower	Number and type (molded, straight)	<b>One, molded</b>
		Inside diameter	<b>1.75</b>
	Upper	Number and type (molded, straight)	<b>One, molded</b>
		Inside diameter	<b>1.28</b>
	By-pass	Number and type (molded, straight)	<b>None</b>
		Inside diameter	<b>None</b>
Fan	Number of blades & spacing		<b>5 blade staggered</b>
	Diameter		<b>14.0</b>
	Ratio-fan to crankshaft rev.		<b>1.07:1</b>
	Fan cutout type		<b>None</b>
	Bearing type		<b>None</b>
*Drive belts (indicate belt used by letter)	Fan		<b>A</b>
	Generator or alternator		<b>B</b>
	Water Pump		<b>A</b>
	Power Steering		<b>C</b>
	Air Conditioning		<b>D</b>
<b>Crankshaft Distributor &amp; camshaft</b>		<b>AB</b>	<b>F</b>

*Drive Belt Dimensions	A	B	C	D	E	F	G	H	I	J	K
Angle of V	<b>52°(a)</b>			<b>38°</b>							
Nominal length (SAE)	<b>45.50</b>	<b>36.00</b>	<b>53.25</b>	<b>36.25</b>							
Width	<b>1.031</b>			<b>.380</b>							

**(a) 6 'V' grooves**

**MVMA Specifications Form**  
**Passenger Car**

Car Line VEGA  
 Model Year 1974 Issued 9/73 Revised (•) \_\_\_\_\_

Engine Displacement

L4-140 C.I.

**Electrical — Supply System**

Battery	Make and Model		Delco-Remy 1980141 sealed side terminal
	Voltage Rtg. & Total Plates		12 volts - 54 plates
	SAE Designation No.		2300 watts @ 0° F
	Cranking power Location		Right side front of engine compartment
	Terminal grounded		Negative
Generator or Alternator	Make		Delco Remy
	Model		1100545
	Type and rating		Diode rectified with integral regulator (32 amps)
	Output at engine idle (neutral)		9-17 amps
	Ratio—Gen. to Cr/s rev.		2.73:1
Regulator	Make		Delco-Remy
	Model		--
	Type		Micro circuit unit, integral with generator
	Cutout relay	Closing voltage @ generator rpm	None
		Reverse current to open	None
	Regulated	Voltage	13.8-14.8 @ 85° F
		Current	--
	Voltage test conditions	Temperature	Operating
		Load	3-8 amperes
		Other	None

**Electrical — Starting System**

Starting Motor	Make		Delco-Remy
	Model		1108195
	Rotation (drive end view)		Clockwise
Motor Drive	Engagement type		Positive shift solenoid
	Pinion meshes (front, rear)		Rear
	Number of teeth	Pinion	9
		Flywheel	Manual
	Auto.		153
	Flywheel tooth face width	Manual	.4010-.4130
Auto.		.4010-.4130	



**MVMA Specifications Form**  
**Passenger Car**

Car Line VEGA  
 Model Year 1974 Issued 9/73 Revised (•) \_\_\_\_\_

**Engine Displacement**

L4-140 C.I.

**Vehicle Emission Control (Continued)**

Evaporative Emission Control	Fuel Tank	Thermal expansion volume (cu. ft.)	.0410
		Pressure relief location (lbs.)	Filler cap 25-35" of water
		Vacuum relief location (lbs.)	Filler cap 5-14" of water
		Vapor-liquid separator type	Integral chamber with fuel tank
		Vapor vented to (crankcase, cannister, other)	Canister
	Carbu- retor	Vapor vented to (crankcase, cannister, other)	Atmosphere
			---
	Vapor Storage	Storage provision (crankcase, cannister, other)	Canister
			---
		Volume (cu. ft.) or capacity (grams)	50-130 grams
	Control valve type	Vacuum diaphragm controlled-constant orifice	

**MVMA Specifications Form  
Passenger Car**

Car Line VEGA  
Model Year 1974 Issued 9/73 Revised (•) \_\_\_\_\_

**Engine Displacement**

14-140 C.I.

**Electrical—Ignition System**

	Conventional - Std., Opt., N.A.	Standard	
Type	Transistorized - Std., Opt., N.A.	--	
	Other (specify)	--	
Coil	Make	Delco Remy	
	Model	1115430	
	Amps	Engine stopped	4.0
		Engine idling	1.8
Spark Plug	Make	AC Spark Plug	
	Model	ACR 42TS	
	Thread (mm)	14	
	Tightening torque (lb. ft.)	15	
	Gap	.033 - .038	
Cable	Conductor type	<u>Linen core impregnated with electrical conducting material</u>	
	Insulation type	<u>Rubber with neoprene jacket</u>	
	Spark plug protector	Neoprene	

**Electrical—Suppression**

Locations & type	
------------------	--

**Electrical—Instruments and Equipment**

Speed-ometer	Type	In-line with pointer
	Trip odometer (std. opt., N.A.)	No
Charge indicator - type		Tell Tale
Temperature indicator - type		Tell Tale
Oil pressure indicator - type		Tell Tale
Fuel indicator - type		Electric Gauge
Wind-shield wiper	Type - Standard	Electric 2-speed
	Type - Optional	None
Wind-shield washer	Type - Standard	Push button - manual
	Type - Optional	None
Horn	Type	Vibrator
	Number used	One
	Amp draw (each)	4.5 - 6.0 @ 12.5 volts
Other		<b>Parking brake warning light and brake failure warning light</b>

**Restraint system warning light and buzzer**

# MVMA Specifications Form Passenger Car

Car Line                     U-9A                      
 Model Year 1974 Issued 9/73 Revised (•)                     

Engine Displacement

L4-140 C.I.

## Electrical — Ignition System — Distributor

Breaker gap (in.)		.019
Cam angle (deg.)		.31-34
Brkr. arm tension (oz.)		19-23
Distributor	Manual	1110496
	Automatic	1110496
Timing	Manual	10°BTC @ 700
	Automatic	12°BTC @ 750

Distributor Model	CENTRIFUGAL ADVANCE Crankshaft Degrees at Engine RPM			VACUUM ADVANCE Crankshaft Deg. at In. of Mercury	
	Start	Intermediate	Maximum	Start	Maximum
1110496	0° @ 1400-1600	10-14 @ 3200	20-24 @ 4800	0° @ 6.5-8.5	21.5-26.5 @ 15

# MVMA Specifications Form Passenger Car

Car Line VEGA  
 Model Year 1974 Issued 9/73 Revised (e) \_\_\_\_\_

**Engine Displacement**

**L4-140 C.I.**

## Drive Units—Automatic Transmission

Trade name	Turbo Hydra-matic	
Type (describe)	3-speed torque converter	
Selector location	Floor mounted	
Gear Ratios	P	Park
	R	1.93
	N	Neutral
	D	2.52-1.52-1.00
	L2	2.52-1.52
	L1	2.52
Max. upshift speed - drive range		
Max. kickdown speed - drive range		
Torque converter	Number of elements	3
	Max. ratio at stall	2.00
	Type of cooling (air, liquid)	Water
	Nominal diameter	10.00
Lubricant	Capacity - refill (pt.)	8
	Type recommended	A suffix A
Special transmission features		

## Drive Units—Axle

Type (front, rear)	Rear		
Description	Semi-floating with hypoid overhung pinion gear		
Limited Slip differential, type	Cone clutch		
Drive Pinion Offset	1.50 vertical	1.50 vertical	
No. of differential pinions	Two		
Pinion adjustment (shim, other)	Shim		
Pinion bearing adj. (shim, other)	Collapsible sleeve		
Wheel bearing type	Single row, cylindrical roller		
Lubricant	Capacity (pt.)	2.8	
	Type recommended	Meeting Military Specs MIL-L-2105B	
	SAE viscosity number	Summer	SAE 80
		Winter	SAE 80
Extreme cold		SAE 80	

## Axle Ratio Tooth Combinations (See page 4 for axle ratio usage)

Axle ratio	2.53	2.93	3.36
No. of teeth	Pinion	13	11
	Ring gear	38	11
Ring Gear O. D.	6.50		

**MVMA Specifications Form**  
**Passenger Car**

Car Line VEGA  
 Model Year 1974 Issued 9/73 Revised (•) \_\_\_\_\_

Engine Displacement	
L4-140 C.I.	
L13	L11

**Drive Units—Clutch (Manual Transmission)**

Make & type	Chevrolet, single dry disc		
Type pressure plate springs	Diaphragm		
Total spring load (lb.)	1250-1450		
No. of clutch driven discs	One		
Clutch facing	Material	Woven type asbestos	
	Outside & inside dia.	8.00x6.00	9.12x6.12
	Total eff. area (sq. in.)	43.98	71.82
	Thickness	.135	
	Engagement cushioning method	Flat spring steel between facings	
Release bearing	Type & method of lubrication	Single row ball, packed and sealed	
Torsional damping	Methods springs, friction material	Coil springs	

**Drive Units—Transmissions**

Manual 3-speed (std., opt., N.A.)	Standard
Manual 4-speed (std., opt., N.A.)	Optional
Automatic (std., opt., N.A.)	Optional

**Drive Units — Manual Trans.**

Number of forward speeds	3		4	
Transmission ratios	In first	3.11	3.11	3.11
	In second	1.84	2.20	2.20
	In third	1.00	1.47	1.47
	In fourth	---	1.00	1.00
	In reverse	3.22	3.11	3.11
Synchronous meshing specify gears	All forward gears			
Shift lever location				
Lubricant	Capacity (pt.)	3		
	Type recommended	Meeting military specs MIL-L-2105B		
	SAE viscosity number	Summer	SAE 80	
		Winter	SAE 80	
Extreme cold		SAE 80		

**MVMA Specifications Form  
Passenger Car**

Car Line VEGA  
 Model Year 1974 Issued 9/73 Revised (•) \_\_\_\_\_

Body Type And/Or Engine Displacement, Etc.

I.4-140 C. I.

**Drive Units — Tires And Wheels (Standard)**

<b>TIRES</b>	Size, load range, ply		A 78 x 13 B (2+2)
	Type (bias, radial, etc.)		Bias belted
	Maximum load inflation pressure (cold)	Front *	24
		Rear *	26
Rev./mile @ 45 mph		884	
<b>WHEELS</b>	Type & material		Short spoke spider - steel
	Rim (size & flange type)		13 x 5
	Attachment	Type (bolt or stud)	Stud
		Circle diameter	4.00
		Number & size	4 hex nuts 7/16-20 UNF-2B
Spare wheel (same or other)			

**Drive Units — Tires And Wheels (Optional)**

Size, load range, ply		BR 70 x 13 B
Type (bias, radial, etc.)		Steel belted radial
Wheel type & material		Short spoke spider - steel
Rim (size & flange type)		13 x 6
Size, load range, ply		A70-13 B White Lettering
Type (bias, radial, etc.)		Bias belted
Wheel type & material		Short spoke spider - steel
Rim (size & flange type)		13 x 6
Size, load range, ply		
Type (bias, radial, etc.)		
Wheel type & material		
Rim (size & flange type)		
Size, load range, ply		
Type (bias, radial, etc.)		
Wheel type & material		
Rim (size & flange type)		
Size, load range, ply		
Type (bias, radial, etc.)		
Wheel type & material		
Rim (size & flange type)		

**Brakes — Parking**

Type of control		Grip handle
Location of control		On tunnel between front seats
Operates on		Rear service brakes
If separate from service brakes	Type (internal or external)	---
	Drum diameter	---
	Lining size (length x width x thickness)	---

\* Full rated pressures shown; selected tire pressures are contingent on weight of vehicle.

**MVMA Specifications Form**  
**Passenger Car**

Car Line VEGA  
 Model Year 1974 Issued 9/73 Revised (e) \_\_\_\_\_

Engine Displacement

--

**Drive Units—Propeller Shaft**

Number used		One	
Type (straight tube, tube-in-tube, internal-external damper, etc.)		Straight tube	
Outer diam. x length* x wall thickness	Manual 3-speed trans.	3.25 x 56.75 x 0.065	
	Manual 4-speed trans.	3.25 x 55.92 x 0.065	
	Automatic transmission	2.75 x 49.56 x 0.065	
Inter-mediate bearing	Type (plain anti-friction)	None	
	Lubrication (fitting, prepack)	---	
Slip Yoke	Type	Yoke	
	Number of teeth	27	
	Spline O. D.	1.1755 - 1.1765	
Universal joints	Make and Mfg. No.	Chevrolet 1285	
	Number used	Two	
	Type (ball and trunnion, cross)	Cross	
	Rear attach. (u-bolt, clamp, etc.)	Flange type	
	Bearing	Type (plain, anti-friction)	Anti-friction
		Lubric. (fitting, prepack)	Pre-pack
Drive taken through (torque tube or arms, springs)		Rear suspension control arms	
Torque taken through (torque tube or arms, springs)		Rear suspension control arms	

\*Center to center of universal joints, or to centerline of rear attachment.

**MVMA Specifications Form**  
**Passenger Car**

Car Line VEGA  
 Model Year 1974 Issued 9/73 Revised (•) \_\_\_\_\_



**Steering**

Manual (std., opt., NA)		Standard		
Power (std., opt., NA)		Optional		
Adjustable steering wheel (tilt, swing, other)	Type and description	Not available		
	(std., opt., NA)	--		
Wheel diameter	Manual	15.25 x 14.75		
	Power	15.25 x 14.75		
Turning diameter (feet)	Outside front	Wall to wall (l. & r.)	34.7	
		Curb to curb (l. & r.)	33.0	
	Inside rear	Wall to wall (l. & r.)		
		Curb to curb (l. & r.)		
Manual	Gear	Type	Semi-reversible, recirculating anti-friction bearings	
		Make	Saginaw Steering	
		Ratios	Gear	20.9:1
	Overall		22.5:1	
	No. wheel turns (stop to stop)		4.4	
Power	Type (coaxial, linkage, etc.)		Integral gear and power piston with vane type pump	
	Make		Saginaw Steering	
	Gear	Type	Same as manual	
		Ratios	Gear	16.0:1-13.0:1
			Overall	16.5:1-13.5:1
	Pump driven by		Belt from crankshaft pulley	
No. wheel turns (stop to stop)		2.82		
Linkage	Type		Parallelogram	
	Location (front or rear of wheels, other)		Front	
	Drag link (trans. or longit.)		Transverse	
	Tie rods (one or two)		Two	
Steering Axis	Inclination at camber (deg.)		8.55 @ 25°	
	Bearings (type)	Upper	Sintered steel spherical	
		Lower	Sintered steel spherical	
		Thrust	None	
Whf. Align. (range at curb wt. & preferred)	Caster (deg.)		N 1 3/4 to P 1/4	
	Camber (deg.)		N 3/4 to P 1 1/4	
	Toe-in (outside track inches)		3/16 to 5/16	
Steering spindle & joint type		Spherical joint steering knuckle pivots		
Wheel Spindle	Diameter	Inner bearing	1.25	
		Outer bearing	0.687	
	Thread size		3/4 - 20 NEF - 3 (modified)	
	Bearing type		Taper roller	



# MVMA Specifications Form

## Passenger Car

Car Line VEGA  
 Model Year 1974 Issued 9/73 Revised (e)

Body Type And/Or Engine Displacement

--

### Brakes — Service

Brake Type (std., opt., N.A.)	Drum	Front		--
		Rear		Standard
	Disc	Front		Standard
		Rear		--
Self adjusting (std., opt., N.A.)				Standard
Special Valving	Type (proportion, delay, metering, other)			Metering and proportioning
Power Brake (std., opt., N.A.)				Not available
Booster Type (remote, integral, etc.)				--
Effective area (sq. in.)*				67.2
Gross lining area (sq. in.)**				67.2
Swept area (sq. in.)***				225.9
Effectiveness		Front		Controlled by valving
		Rear		Controlled by valving
Drum	Diameter (nominal)	Front		--
		Rear		9.0
	Type and material			Composite, cast iron rim and steel web
Rotor	Outer working diameter			9.88
	Inner working diameter			6.40
	Thickness			0.50
	Material & type (vented/solid)			Cast iron - solid, integral with hub
Wheel cylinder bore	Front			1.875
	Rear			0.75
Master Cylinder	Bore			0.75
	Stroke			1.59
Pedal arc ratio				6.47
Line pressure at 100 lb. pedal load				1270
Shoe Clearance	Front			Self-adjusting
	Rear			Self-adjusting
Anti-skid device type (std., opt., N.A.)				Not available
Brake lining	Bonded or riveted			Bonded
	Front Wheel	Material		Molded asbestos
		Size (length x width x thickness)	Prim. or out-board	4.00 x 1.60 x 0.370
			Second. or in-board	--
		Size (length x width x thickness)	Prim. or out-board	4.00 x 1.60 x 0.370
	Second. or in-board		--	
	Segments per shoe			One
	Rear Wheel	Material		Molded asbestos
		Size (length x width x thickness)	Prim. or out-board	9.18 x 1.20 x 0.20
			Second. or in-board	--
Size (length x width x thickness)		Prim. or out-board	9.18 x 1.20 x 0.20	
	Second. or in-board	--		
Segments per shoe			One	

\* Excludes rivet holes, grooves, chamfers, etc.

\*\* Includes rivet holes, grooves, chamfers, etc.

\*\*\* Total swept area for four brakes. (Widest lining contact width for each brake x its contact circumference.)

# MVMA Specifications Form Passenger Car

Car Line VEGA  
 Model Year 1974 Issued 9/23 Revised (•) \_\_\_\_\_

Body Type And/Or Engine Displacement

--	--

## Suspension — General

(See Supplement page for details on Air Suspension)

Provision for car leveling	None	
Provision for brake dip control	Front suspension geometry	
Provision for acc. squat control	Rear suspension geometry	
Special provisions for car jacking	Position jack in bumper slot in lower face of front and rear bumpers	
Shock absorber front & rear	Type	Direct double acting hydraulic
	Make	Delco products
	Piston dia.	1.00
Other special features	--	

## Suspension — Front

Type and description		Independent SLA type, coil springs
Travel	Full Jounce	2.56
	Full Rebound	Coil 3.48
Spring	Type (coil, leaf, other)	Coil
	Material	Steel alloy
	Size (coil design height & I.D., bar length x dia.)	8.70 x 3.50; 91.72 x .581 (a)
	Spring rate (lb. per in.)	400 (a)
	Rate at wheel (lb. per in.)	1.45.7 (a)
Stabilizer	Type (link, linkless, frameless)	Link
	Material & bar diameter	HR steel 0.875

## Suspension — Rear

Type and description		Salisbury rear axle with coil springs
Drive and torque taken through		Control arms
Travel	Full Jounce	2.75
	Full Rebound	4.32
Spring	Type (coil, leaf, other)	Coil
	Material	Chrome carbon steel heat treated
	Size (length x width, coil design height & I.D., bar length & dia.)	10.24 x 4.24; 98.38 x .508 (a)
	Spring rate (lb. per in.)	155 (a)
	Rate at wheel (lb. per in.)	155.4 (a)
	Mounting insulation type	Rubber pad - top and bottom
If leaf	No. of leaves	--
	Shackle (comp. or tens.)	--
Stabilizer	Type (link, linkless, frameless)	Linkless (b)
	Material & bar diameter	0.75
Track bar type		None

(a) For base equipped model springs are computer selected by size and rate according to vehicle weight including optional equipment.

(b) Used with special performance option RPO F41

# MVMA Specifications Form Passenger Car

Car Line VEGA  
 Model Year 1974 Issued 9/73 Revised (•) \_\_\_\_\_

**Body Type**

2-Door Notchback Coupe	2-Door Hatchback Coupe	2-Door Station Wagon	2-Door Panel Delivery
------------------------------	------------------------------	----------------------------	-----------------------------

## Frame

Type and description (Separate frame, unitized frame, partially - unitized frame)

Integral Body-Frame

## Body — Miscellaneous Information

Drs. hinged (front, rr.)	Front doors	Front			
	Rear doors	None			
Type of finish (lacquer, enamel, other)		Acrylic, Lacquer			
Hood counterbalanced (yes, no)		No			
Hood release control (internal, external)		Internal			
Vehicle Ident. No. location		Top left hand of instrument panel pad			
Engine No. location		Pad; upper left hand corner on right side of cylinder case opposite number three cylinder			
Theft protection - type		Lock, mounted on steering column; locks steering wheel, transmission shift levers and ignition			
Vent window control method (crank, friction pivot)	Front	Adjustable accessory			
	Rear	--			
Seat cushion type	Front	Formed full foam pad			
	Rear	Formed wire and full foam construction			
	3rd seat	--			
Seat back type	Front	Formed full foam pad			
	Rear	Formed wire and full foam construction			
	3rd seat	--			
Windshield glass type (i.e., single curved - laminated plate)		Curved laminated plate			
Side glass type (i.e., curved - tempered plate)		Curved-tempered plate			
Backlight glass type (i.e., compound curved - tempered plate, three piece)		Curved-tempered plate			
Windshield glass exposed surface area	1116.2	1143.9	1116.2	1116.2	
Side glass exposed surface area	1545.4	1334.4	2062.0	956.4	
Backlight glass exposed surface area	973.8	1071.3	662.5	662.5	
Total glass exposed surface area	3635.4	3549.6	3840.7	2735.1	

# MVMA Specifications Form Passenger Car

Car Line VEGA  
Model Year 1974 Issued 9/23 Revised (•) 3/74

Body Type And/Or Engine Displacement

--

## Suspension — General

(See Supplement page for details on Air Suspension)

Provision for car leveling	None	
Provision for brake dip control	Front suspension geometry	
Provision for acc. squat control	Rear suspension geometry	
Special provisions for car jacking	Position jack in bumper slot in lower face of front and rear bumpers	
Shock absorber front & rear	Type	Direct double acting hydraulic
	Make	Delco products
	Piston dia.	1.00
Other special features	--	

## Suspension — Front

Type and description	Independent SLA type, coil springs	
Travel	Full Jounce	2.56
	Full Rebound	Coil 3.48
Spring	Type (coil, leaf, other)	Coil
	Material	Steel alloy
	Size (coil design height & I.D., bar length x dia.)	8.70 x 3.50; 91.72 x .581 (a)
	● Spring rate (lb. per in.)	325 (a)
	● Rate at wheel (lb. per in.)	145.7 (a)
Stabilizer	Type (link, linkless, frameless)	Link
	Material & bar diameter	HR steel 0.875

## Suspension — Rear

Type and description	Salisbury rear axle with coil springs	
Drive and torque taken through	Control arms	
Travel	Full Jounce	2.75
	Full Rebound	4.32
Spring	Type (coil, leaf, other)	Coil
	Material	Chrome carbon steel heat treated
	Size (length x width, coil design height & I.D., bar length & dia.)	10.24 x 4.24; 98.38 x .508 (a)
	● Spring rate (lb. per in.)	130 (a)
	● Rate at wheel (lb. per in.)	155.4 (a)
	Mounting insulation type	Rubber pad - top and bottom
	If leaf	No. of leaves
	Shackle (comp. or tens.)	--
Stabilizer	Type (link, linkless, frameless)	Linkless (b)
	Material & bar diameter	0.75
Track bar type	None	

(a) For base equipped model. Springs for all models are computer selected by size and rate according to vehicle weight including optional equipment.

b) Used with special performance option RPO F41

# MVMA Specifications Form

## Passenger Car

Car Line VEGA  
 Model Year 1974 Issued 9/73 Revised (●) 1/74

Body Type			
2-Door Notchback Coupe	2-Door Hatchback Coupe	2-Door Station Wagon	2-Door Panel Delivery

### Frame

Type and description (Separate frame, unitized frame, partially - unitized frame)

Integral Body-Frame

### Body — Miscellaneous Information

Drs. hinged (front, rr.)	Front doors	Front			
	Rear doors	None			
Type of finish (lacquer, enamel, other)		Acrylic, Lacquer			
Hood counterbalanced (yes, no)		No			
Hood release control (internal, external)		Internal			
Vehicle Ident. No. location		Top left hand of instrument panel pad			
Engine No. location		Pad; upper left hand corner on right side of cylinder case opposite number three cylinder			
Theft protection - type		Lock, mounted on steering column; locks steering wheel, transmission shift levers and ignition			
Vent window control method (crank, friction pivot)	Front	--			
	Rear	--			
Seat cushion type	Front	Formed full foam pad			
	Rear	Formed wire and full foam construction			
	3rd seat	--			
Seat back type	Front	Formed full foam pad			
	Rear	Formed wire and full foam construction			
	3rd seat	--			
Windshield glass type (i.e. single curved - laminated plate)		Curved laminated plate			
Side glass type (i.e. curved - tempered plate)		Curved-tempered plate			
Backlight glass type (i.e. compound curved - tempered plate, three piece)		Curved-tempered plate			
Windshield glass exposed surface area		1116.2	1143.9	1116.2	1116.2
Side glass exposed surface area		1545.4	1334.4	2062.0	956.4
Backlight glass exposed surface area		973.8	1071.3	662.5	662.5
Total glass exposed surface area		3635.4	3549.6	3840.7	2735.1



**MVMA Specifications Form**  
**Passenger Car**

Car Line VEGA  
Model Year 1974 Issued 9/73 Revised (e)

Body Type			
2-Door Notchback Coupe	2-Door Hatchback Coupe	2-Door Station Wagon	2-Door Panel Delivery

**Convenience Equipment**

Power windows	Side windows	Not available
	Vent windows	Not available
	Backlight or tailgate	Not available
Power seats (specify type as well as availability)		Not available
Reclining front seat back (R-L or both)		2-position included in package option
Radios (specify type as well as availability)		Optional - AM Push-button AM-FM Push button
Rear seat speaker		Optional (except panel delivery)
Power antenna		Not available
Clock		Optional
Air conditioner (specify type and availability)		Optional - Four season
Speed warning device		Not available
Speed control device		Not available
Ignition lock lamp		Not available
Dome lamp		Standard
Glove compartment lamp		Not available
Luggage compartment lamp		Not available
Underhood lamp		Not available
Courtesy lamp		Not available
Map lamp		Not available
Cornering light lamp		Not available
Rear window <del>washer</del> defogger electrically heated		Optional
Rear window defogger		Not available
Windshield antenna		Available with factory installed radio
Tinted body glass		Optional
Swing out rear window		Optional with notchback and hatchback coupes only
Auxiliary seat		Optional with panel delivery

**Lamp Height And Spacing\***

Height above ground to center of bulb or marker	Headlamp (H125)	Highest**	26.54	26.52	27.14
		Lowest			
	Tail (H126)	Highest	26.67	25.21	24.55
		Lowest			
	Sidemarker	Front	22.89	22.88	23.45
		Rear	22.24	22.33	21.74
Distance from C/L of car to center of bulb	Headlamp	Inside		--	
		Outside**		25.48	
	Tail	Inside		--	
		Outside		23.32	
	Directional	Front		17.92	
		Rear		23.32	

\*Measured with passenger load and trunk cargo load specified in Car and Body Dimension section.

\*\*If single headlamps are used enter here.

**MVMA Specifications Form**  
**Passenger Car**

Car Line VEGA  
Model Year 1974 Issued 9/73 Revised (•) \_\_\_\_\_

Equipment Differential Weights	WEIGHT (Pounds)			Remarks
	Front	Rear	Total	
	<b>Air conditioning</b>	+ 77	+ 8	
<b>Auxiliary seat</b>	+ 11	+ 16	+ 27	Panel delivery only
<b>Front &amp; rear floor mats</b>	+ 4	+ 5	+ 9	
<b>Spec. Perf frt &amp; rr susp</b>	+ 12	+ 8	+ 20	
<b>Power Steering</b>	+ 36	+ 1	+ 37	
<b>Radio AM Push-button</b>	+ 5	+ 1	+ 6	
<b>Radio AM/FM push button</b>	+ 6	+ 2	+ 8	
<b>Battery heavy duty</b>	+ 2	+ 0	+ 2	
<b>Exterior soft roof cover</b>	+ 2	+ 3	+ 5	2-Door hatchback coupe 1HV77 only (in-cluded in RPO Z04 for notchback coupe)
<b>Deluxe interior &amp; exterior</b>	+ 2	+ 1	+ 3	
<b>Special deluxe equipment</b>	+ 8	+ 5	+ 13	
<b>Custom interior</b>	+ 0	+ 6	+ 6	2-Door notchback coupe 1HV11
	+ 1	+ 0	+ 1	2-Door hatchback coupe 1HV77
	+ 1	+ 0	+ 1	2-Door Kammback Wagon 1HV15
<b>GT Sport Package</b>	+ 3	+ 3	+ 6	2-Door hatchback coupe and wagon
<b>Roof Luggage carrier</b>	+ 1	+ 11	+ 12	2-Door wagon and panel delivery
<b>Wheel Trim Ring</b>	+ 3	+ 3	+ 6	
<b>Wheel covers</b>	+ 2	+ 2	+ 4	
<b>4-Speed transmission</b>	+ 12	+ 6	+ 18	2-Door notchback coupe 1HV11
	+ 4	+ 1	+ 5	2-Door hatchback coupe 1HV77, wgn 1HV15
<b>Turbo Hydra-matic trans.</b>	+ 23	+ 10	+ 33	2-Door notchback coupe 1HV11
	+ 16	+ 6	+ 22	2-Door hatchback coupe 1HV77, wgn 1HV15



**MVMA Specifications Form**  
**Passenger Car**

Car Line VEGA  
 Model Year 1974 Issued 9/73 Revised (e) \_\_\_\_\_

Body Type

**Vehicle Fiducial Marks**

Fiducial Mark  
Number \*

Define Coordinate Location

- |       |  |
|-------|--|
| Front | <p>X - Fiducial Mark to Centerline of Car - Front,<br/>Width measurement made from centerline of car to fiducial mark located on top of the front seat adjuster mounting bolt.</p> <p>Y - Fiducial Mark to Vertical Body Zero Line - Front,<br/>Measured horizontally from the body zero line to the front fiducial mark located on top of the front seat adjuster mounting bolt.</p> <p>Z - Fiducial Mark to Horizontal Body Zero Line - Front,<br/>Measured vertically from body zero line to the front fiducial mark located on top of the front seat adjuster mounting bolt.</p> |
| Rear  | <p>X - Fiducial Mark to Centerline of Car - Rear,<br/>Width measurement made from centerline of car to fiducial mark located on the rear underbody crossbar.</p> <p>Y - Fiducial Mark to Vertical Body Zero Line - Rear,<br/>Measured horizontally from body zero line to the rear fiducial mark located on rear underbody crossbar.</p> <p>Z - Fiducial Mark to Horizontal Body Zero Line - Rear,<br/>Measured vertically from body zero line to the rear fiducial mark located on the rear underbody crossbar.</p>   |

Fiducial Mark  
Number

Coordinate Location of  
Fiducial Mark

Fiducial Mark  
to Ground  
at Design

Coupes 8.82  
 Station Wagons 8.85  
 Panel Delivery 8.96

Front	X	Y	Z
	19.86	29.40	4.12

Coupes 13.44  
 Station Wagons 13.54  
 Panel Delivery 12.77

Rear	X	Y	Z
	8.25	121.50	9.06

\* Reference — SAE Recommended Practice, J182

# MVMA Specifications Form Passenger Car

## Table Of Contents

---

1	Car Models
2, 3	Car and Body Dimensions
4	Power Teams
5—9	Engine
9	Exhaust System
10	Fuel System
11	Cooling System
12, 13	Vehicle Emission Control
14—16	Electrical
17—19	Drive Units
20	Tires and Wheels
20, 21	Brakes
22	Steering
23	Suspension — Front and Rear
24	Frame
24	Body — Miscellaneous Information
25	Convenience Equipment
25	Lamp Height and Spacing
26	Vehicle Weights
27	Optional Equipment Weights
29, 30, 31	Car and Body Dimension Key Sheets
32	Index

---

### NOTES:

1. The General Specifications herein are those in effect at date of compilation and are subject to change without notice by the manufacturer.
2. UNLESS OTHERWISE INDICATED:
  - a. Specifications apply to standard models without optional equipment. Significant deviations are noted.
  - b. Nominal design dimensions are used throughout these specifications.
  - c. All dimensions are in inches.

