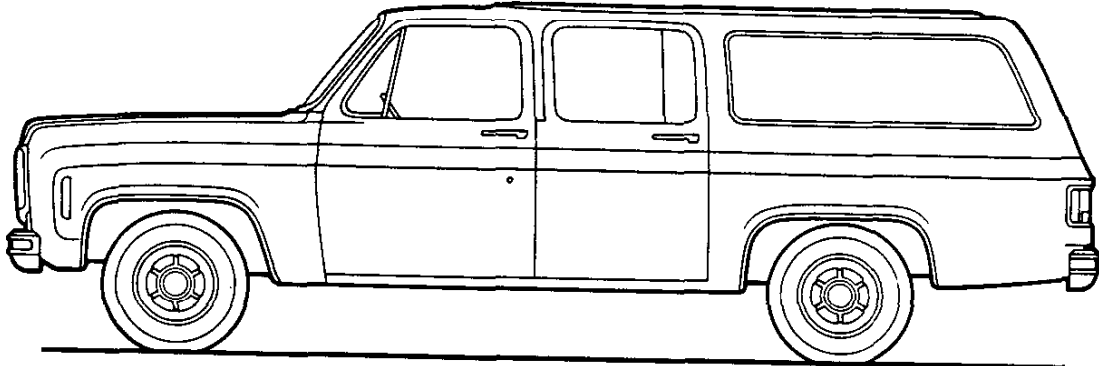


SUBURBAN 1976

SUBURBAN MODEL SELECTOR

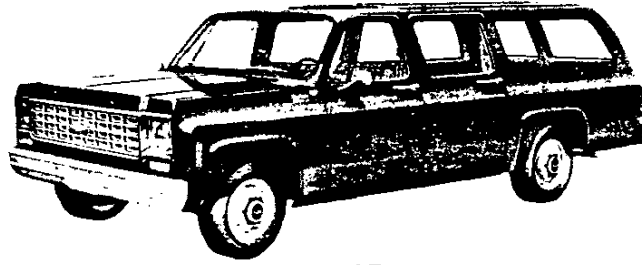


Series	Model Number	Body Ordering Code	
		Panel Rear Doors	Endgate
C10	CC10906	ZW9	E55
C20	CC20906	ZW9	E55
K10 (4-Wheel Drive)	CK10906	ZW9	E55
K20 (4-Wheel Drive)	CK20906	ZW9	E55

SUBURBAN

CUSTOM DELUXE FEATURES—STANDARD MODEL

The Custom Deluxe standard models include the following items as standard equipment

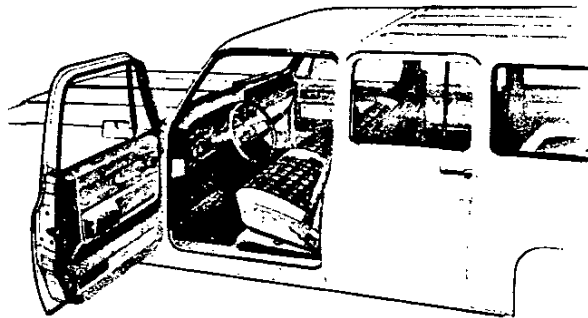


EXTERIOR

- **Bumpers:** Front and rear; painted white
- **Color:** See Interior and Exterior Color Selection Chart
- **Doors:** Four side doors: two LH and two RH; two rear panel doors (optional endgate with drop-glass available)
- **Drip Moldings:** Bright; over side doors
- **Grille:** Molded plastic; painted silver; integral Chevrolet emblem at center includes bright insert with black and ochre trim
- **Grille Frame:** Bright upper and lower moldings joining extensions of bright headlamp bezels; silver-painted bezel centers
- **Horn:** Single, electric, low-note
- **Hub Caps:** Painted white with black and ochre trim (2-wheel-drive models only)
- **Keys:** Two-key system with separate keys for ignition switch and door locks
- **Lights:**
 - Backup lamps: Two rear (integral with taillamps)
 - Combination parking/direction/hazard: Two front
 - Combination tail/stop/direction/hazard: Two rear
 - Headlamps: Two; Power Beam
 - License plate lamp: Single rear
 - Side marker lamps with reflectors: Two front (wraparound taillamps also serve as rear side marker lamps and reflectors)
- **Mirrors:** RH and LH fixed arm with adjustable 5½" x 4" head; chrome finish
- **Nameplates:** Bright "Custom Deluxe" nameplates, with series designation, on upper portions of front fenders near doors; bright "Suburban" nameplate on RH rear door
- **Tools:** Mechanical jack and wheel wrench
- **Wheels:** Painted white
- **Windshield Wipers and Washers:** Electric, 2-speed wipers with matte finish on exposed metal portions; partially concealed arms; coordinated dual-orifice washers

INTERIOR

- **Armrests:** RH and LH padded; integral with side door trim panels
- **Ashtrays:** In middle of instrument panel and in rear side door trim panels
- **Coat Hooks:** Over RH and LH rear side door openings
- **Colors:**
 - Painted areas: Same as exterior primary color choice
 - Interior trim: Coordinated with seat trim color choice
- **Floor Covering:** Embossed black rubber mats over entire floor area
- **Heater and Defogger:** Deluxe-air; automatic blower operation with ignition switch on for power ventilation system
- **Instruments:**
 - Gauges: Speedometer, odometer and fuel
 - Switches: Main, for control of exterior lights, instrument cluster lights, and courtesy/map light; wiper-washer; headlight beam (foot); ignition; direction signal (with lane change position); hazard warning; heater fan
 - Warning lights: Generator, oil pressure, engine temperature, seat belt, brake, direction/hazard signal, and high beam
- **Instrument Panel Control Knobs:** Soft black plastic with white graphic identification (except heater and wiper-washer controls)
- **Instrument Panel Pad:** Color-keyed, energy-absorbing foam type with grained vinyl skin; has wood-grained applique on RH side with bright trim and bright "Custom Deluxe" nameplate
- **Insulation and Sound Deadening Material:** Dash (firewall), under front seat at center, and under front and center floor mats
- **Lights:** Instrument cluster and courtesy/map lights
- **Mirror, Rearview:** 10" prismatic with soft vinyl rim
- **Scuff Plates:** Door-opening protection and floor mat retention; bright; partial for front side doors, full-length for rear side doors, and full-width for rear compartment platform
- **Seat:** Full-width bench-type front seat only, foam padded, with plaid pattern vinyl trim. See Interior and Exterior Color Selection Chart for color availability
- **Seat Belts:** Front only; non-detachable combination lap and shoulder belts for outboard positions with automatic-locking retractors on lap belts, emergency-locking retractors on shoulder belts, and switch in driver's lap belt retractor for buzzer warning system; lap belt with manual adjustment for center position. All seat belts are color-keyed with pushbutton type buckles.
- **Spare Tire Carrier:** LH rear side
- **Steering Wheel and Column:** 16" black wheel with 2 spokes (17½" in 4-wheel-drive models); black energy-absorbing steering column
- **Stowage Box:** In RH side of instrument panel; door has bright turn-type latch release
- **Sunshades:** RH and LH padded; color-keyed
- **Trim Panels:** Color-keyed, embossed molded plastic on side doors with integral armrests; painted steel panels on rear quarter areas



SUBURBAN

SCOTTSDALE MODEL OPTION—RPO Z62

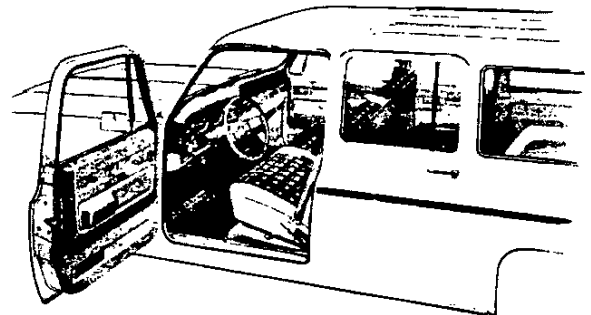
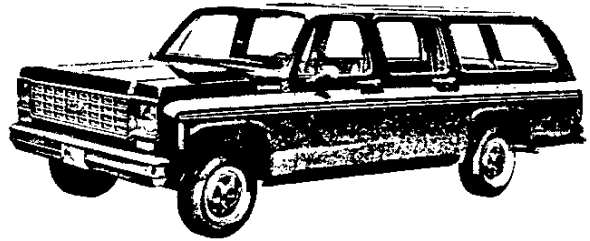
This option includes all Custom Deluxe standard model items plus the additions or substitutions listed below

EXTERIOR

- **Bright Appearance Items:**
 - "Scottsdale" nameplates, with series designation, on front fenders
 - Body side upper spear molding trim
 - Front and rear bumpers
 - Parking/turn-signal lamp, side marker lamp, and taillamp trim
 - Hub caps
 - Windshield reveal molding
 - Rear side window trim
- **Horn:** Additional, electric, high-note
- **Moldings:** Spear-type black plastic body side upper moldings

INTERIOR

- **Bright Appearance Items:**
 - "Scottsdale" nameplate on instrument panel pad
 - Dome lamp trim
 - Full-length front door sill scuff plates
- **Cigar Lighter**
- **Dome Lamps:** Two; one front, one rear
- **Dome and Courtesy Lamp Switches:** Front side door actuated (dome and courtesy lamps also may be activated by main light switch)
- **Floor Covering:** Color-keyed rubber mats in front seat area (also in center and rear seat areas when center seat is ordered)
- **Headliner:** Full-length, pearl gray, perforated molded plastic with fiber glass blanket backing; includes matching retainer moldings
- **Insulation:** Under cowl panel and on headliner
- **Pillar Trim Panels:** Pearl gray molded plastic on windshield pillars and center door pillars
- **Seats:** Full-depth foam front seat cushion; choice of: 1) plaid pattern vinyl trim (standard); 2) ribbed pattern velour cloth and vinyl trim (at extra cost) or 3) all-vinyl buffalo hide grain trim (at extra cost). See Interior and Exterior Color Selection Chart for color availability
- **Spare Tire Cover:** Color-keyed vinyl
- **Sunshades:** Pearl gray to match headliner



SILVERADO MODEL OPTION—RPO YE9

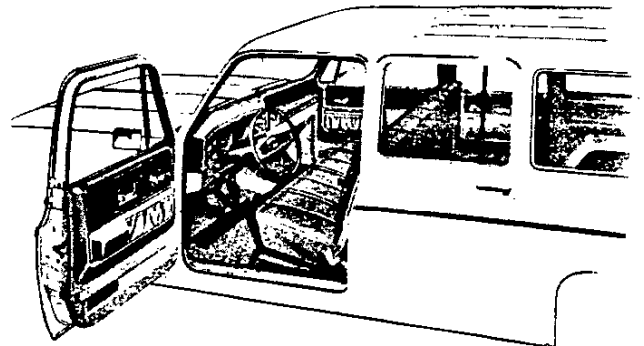
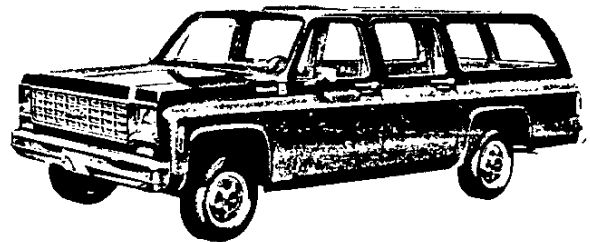
This option includes all items in the Scottsdale model option plus the additions or substitutions listed below

EXTERIOR

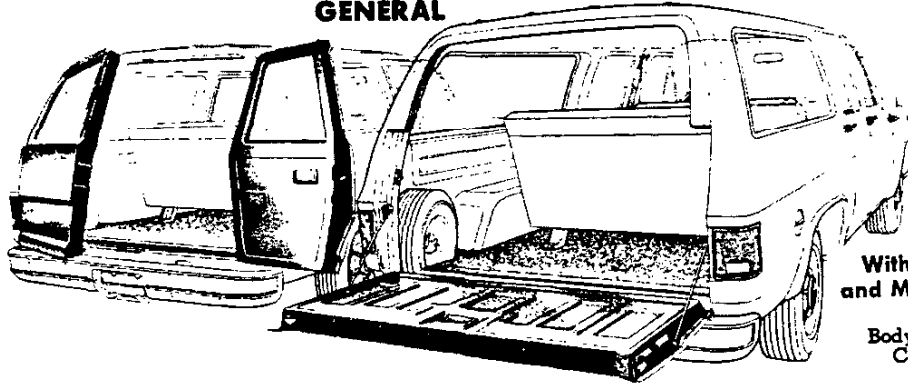
- **Bright Appearance Items:**
 - "Silverado" nameplates, with series designation, on front fenders
 - Upper body side and rear door (or tailgate) moldings with black paint trim
- **Body-to-Fender Insulators**
- **Hood Insulator**
- **Secondary Door Seals:** On side door upper frames

INTERIOR

- **Bright Appearance Items:**
 - "Silverado" nameplate on instrument panel pad
 - Four-speed transmission shift lever
 - Transfer case shift lever (K10-20 models with conventional 4WD)
 - Trim on instrument cluster face plate, side door trim panels, and Series C10-20 steering wheel
- **Cowl Panel Trim:** Color-keyed molded plastic.
- **Floor Covering:** Color-keyed carpeting; front seat area (also in center and rear seat areas and on wheelhouses when center seat is ordered)
- **Instrument Cluster:** Voltmeter, engine temperature gauge, and oil pressure gauge replace warning lights; includes woodgrain trimmed face plate
- **Insulation:** Under front seat at left and right hand sides
- **Seats:** Choice of: 1) all-vinyl buffalo hide grain trim or 2) ribbed pattern velour cloth and vinyl trim. See Interior and Exterior Color Selection Chart for color availability
- **Side Door Trim Panels:** Color-keyed molded plastic (with vinyl storage pockets on front door units only); includes woodgrain inserts having bright borders with tooled leather pattern trim
- **Steering Wheel Trim:** Woodgrain insert on spokes (C10-20 models only)



SUBURBAN GENERAL



**With Panel
Rear Doors**
Body Ordering
Code ZW9*

**With Tailgate
and Manual Drop
Glass**
Body Ordering
Code E55*

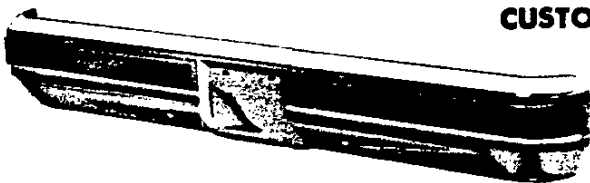
Suburban models have 4 side doors, two front and two rear. Front side doors are equipped with drop-glass and ventipane assemblies; the rear side doors have a drop-glass in the forward portion and fixed glass in the rear portion. The rear quarter windows have fixed glass.

Suburbans ordered with Body Ordering Code ZW9 have panel-type rear doors incorporating fixed glass, positive fork-cam latches, and an outside key lock. A 2-position, strap-type check on each door permits either a 118- or 162-degree door opening, depending on how the retaining pin is positioned; full door opening of 172-degrees is obtained by removing the retaining pin.

Suburbans ordered with Body Ordering Code E55 have a tailgate with a manually-controlled curved drop glass. Operation of the window is through an articulated crank-type regulator handle on the tailgate outer panel; a key lock cylinder is concealed in the regulator handle, and must be unlocked before the window can be lowered. After the window is lowered, the tailgate can be lowered by moving the release handle at the upper center of the tailgate inner panel. When the tailgate is open, it is supported by reel-type cables. Embossments on the tailgate inner panel facilitate loading of large objects. An optional electric tailgate window is available by ordering RPO A33.

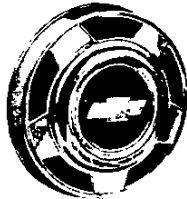
*Both models shown with optional folding center and removable rear seats

CUSTOM OPTIONS



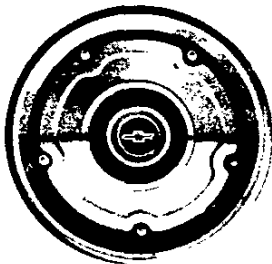
Chromed Bumpers & Deluxe Chromed Bumpers
(RPO V37, VE5)

Chromed bumpers (RPO V37) and Deluxe chromed bumpers (RPO VE5) with resilient impact strips are available optionally on all Suburban models.



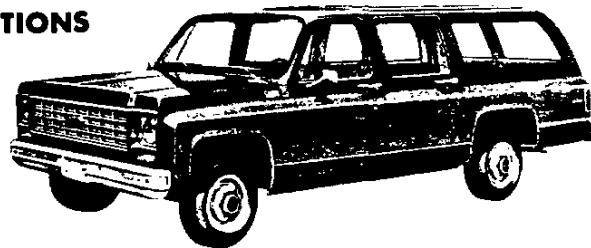
Bright Hub Caps
(RPO P03)

Bright, anodized aluminum hub caps are available on all Suburban models. C-K10 models feature a 5-spoke design, while C-K20 models have a similar 6-spoke design. The front units for all K10 models, and K20 models with conventional 4WD, have a cut-out at the center to clear the axle hubs.



Wheel Covers
(RPO P01)

Stainless steel wheel covers are available only on C10-20 and K10 Suburban models. The front units for K10 models with conventional 4WD have a cut-out at the center to clear the axle hubs.



Custom Trim Moldings
(RPO B84, B85, YG1)

Side and rear upper trim moldings (RPO B85) or side and rear upper and lower and wheel opening trim moldings (RPO YG1) of bright metal are offered on all Suburban models plus upper body side spear moldings (RPO B84) of black plastic with bright trim. These options include bright trim for parking, side marker and tail lamps.

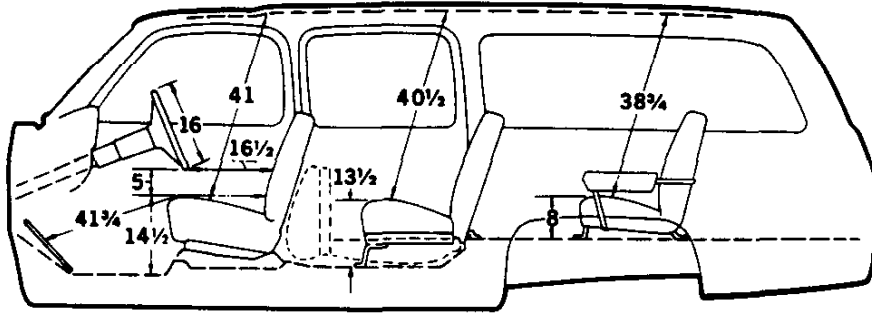


Wood Grained Exterior Trim
(RPO YG2)

Wide wood grained applique mounted to entire length of body side panels, doors, front fenders and rear doors or tailgate between required upper and lower optional moldings (RPO YG1). Also includes "Estate" nameplates on body sides.

SUBURBAN

DIMENSIONS



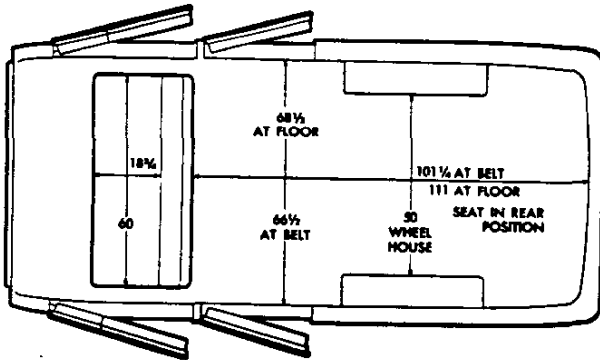
Glass Area (sq. in.)

Windshield.....	1447	Side rear window (each side).	1074
Front side door including ventipane (each side).....	546	Rear:	
Rear side door (each side).....	488	ZW9 panel doors (total).....	654
		E55 tailgate.....	1041

SEATING ARRANGEMENTS

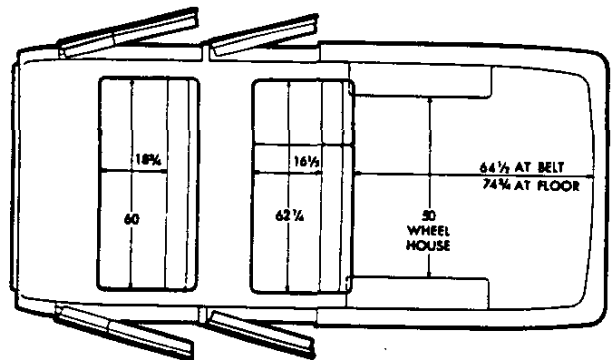
Front Seat

Standard or RPO Z52 full-depth foam front seat



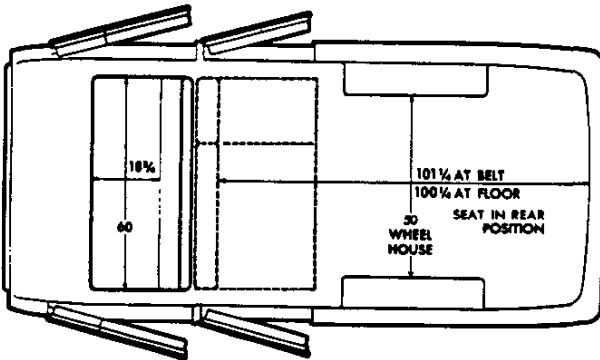
Front and Folding Center Seat

Standard front and RPO AT5 folding center seats



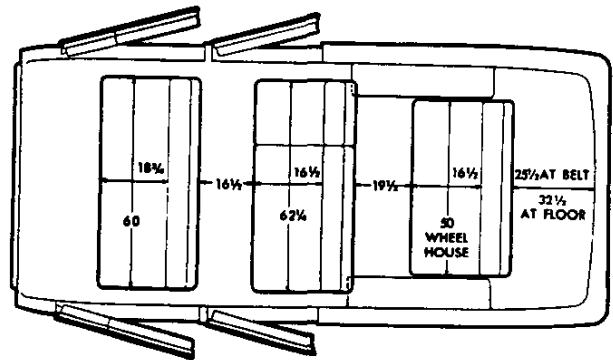
Front and Folding Center Seats

Standard front and RPO AT5 folding center seats
(Center seats shown in folded position)



Front, Folding Center And Rear Removable Seats

Standard front, RPO AT5 folding center and
RPO AS3 removable rear seats



SUBURBAN

INTERIOR AND EXTERIOR COLOR CHART

Please Note: Exterior and interior combinations shown in chart below are those recommended by Chevrolet; however, any exterior color combination may be ordered with any available interior color if the particular combination is desired by a customer.

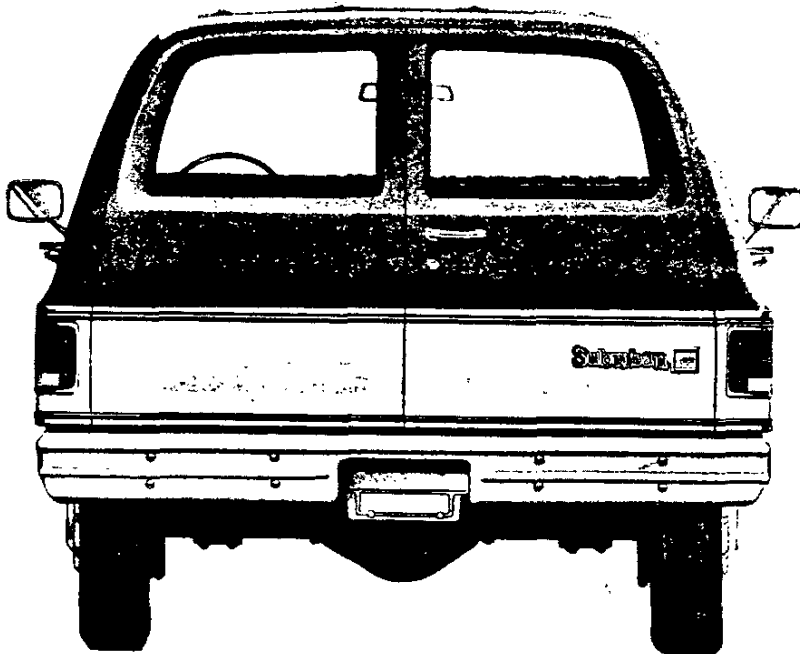
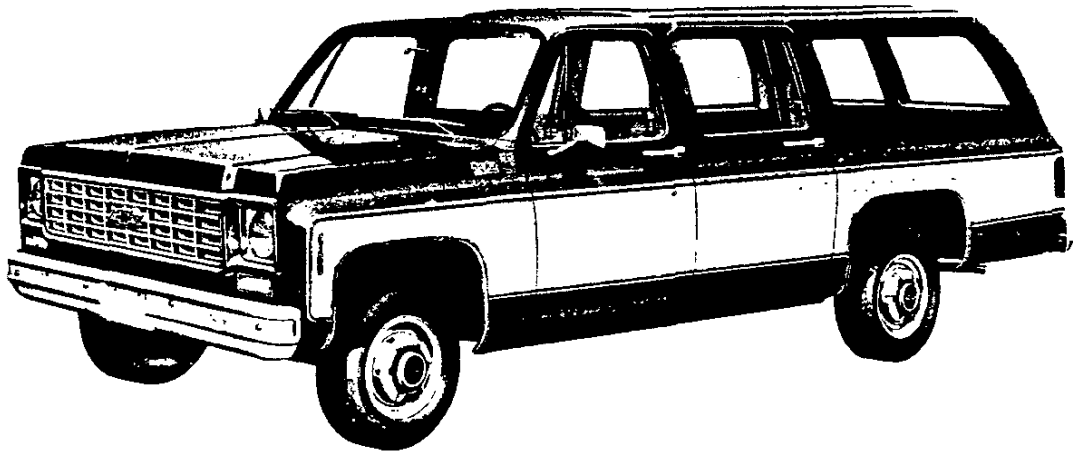
INTERIOR TYPE	Decor Option	INTERIOR TRIM COLOR AND CODE		
		Blue	Red	Saddle
Custom Deluxe Vinyl (Code V) Bench Seat	Std	VDD1	VRR1	VSS1
Scottsdale Vinyl (Code V) Bench Seat	Z62	VDD1	VRR1	VSS1
Custom Cloth (Code D) Bench Seat		LDD1	LRR1	LSS1
Custom Vinyl (Code W) Bench Seat		XDD1	XRR1	XSS1
Silverado Custom Cloth (Code D) Bench Seat	YE9	LDD1	LRR1	LSS1
Custom Vinyl (Code W) Bench Seat		XDD1	XRR1	XSS1
EXTERIOR COLORS ♦	Primary	Secondary	RECOMMENDED INTERIOR TRIM COLORS	
BLUE, SKYLINE (Light)	20	20	X	X
White, Frost	20	12	X	X
BLUE, HAWAIIAN (Medium)	23	23	X	X
Blue, Skyline	23	20	X	X
Tan, Santa Fe	23	60	X	X
White, Frost	23	12	X	X
BLUE, CATALINA (Dark) (M)	25	25	X	X
Blue, Skyline	25	20	X	X
White, Frost	25	12	X	X
BRONZE, GRECIAN	61	61	X	X
Tan, Santa Fe	61	60	X	X
Buckskin	61	62	X	X
White, Frost	61	12	X	X
BUCKSKIN	62	62	X	X
Tan, Santa Fe	62	60	X	X
White, Frost	62	12	X	X
GOLD, YUBA (Medium) (M)	53	53	X	X
White, Frost	53	12	X	X
GOLD, MOSS (Dark) (M)	81	81	X	X
White, Frost	81	12	X	X
GREEN, WILLOWAY (Light)	43	43	X	X
White, Frost	43	12	X	X
GREEN, SPRING (Medium) (M)	41	41	X	X
Green, Willoway	41	43	X	X
White, Frost	41	12	X	X
GREEN, GLENWOOD (Dark)	46	46	X	X
Buckskin	46	62	X	X
Green, Willoway	46	43	X	X
White, Frost	46	12	X	X
RED, CRIMSON (Medium)	73	73	X	X
Tan, Santa Fe	73	60	X	X
White, Frost	73	12	X	X
RED, ROSEDALE (Dark)	71	71	X	X
Tan, Santa Fe	71	60	X	X
Buckskin	71	62	X	X
White, Frost	71	12	X	X
SILVER, SARATOGA (M)	17	17	X	X
Red, Rosedale	17	71	X	X
White, Frost	17	12	X	X
TAN, SANTA FE	60	60	X	X
Buckskin	60	62	X	X
Red, Rosedale	60	71	X	X
White, Frost	60	12	X	X
WHITE, FROST	12	12	X	X
Blue, Skyline	12	20	X	X
Buckskin	12	62	X	X
Green, Willoway	12	43	X	X
Red, Rosedale	12	71	X	X
Tan, Santa Fe	12	60	X	X

♦ Primary color shown in **BOLDFACE TYPE**; secondary colors shown in Lightface Type. See opposite page for two-tone paint application. (M): Metallic
 Seat Trim Codes: V—Plaid Pattern Vinyl; W—Buffalo Hide Vinyl; D—Striped Pattern Velour Cloth

SUBURBAN

TWO-TONE* EXTERIOR COLOR COMBINATIONS

The application of paint for solid and two-tone exterior color combinations is shown below.



SPECIAL TWO-TONE

Special two-tone (ZY3) paint colors include custom upper and lower moldings (lower only on models with Silverado Model Option; upper is already included). The primary color is applied to the areas above and below the moldings (including the roof). The secondary color is applied to the area between these moldings.

*Optional at extra cost

SUBURBAN—Conventional

STANDARD SPECIFICATIONS

(See Blue Tab Section for Specification Details)

Series	C10	C20
Engine		
Base Equip.—6 cyl.	250 1-bbl. L6	—
—8 cyl.	350 4-bbl. V8	350 4-bbl. V8
Clutch—6 cyl.	11", 124 sq. in.	—
—8 cyl.	12", 150 sq. in.	12", 150 sq. in.
Air Filter	Oiled-paper Element	
Oil Filter	Throwaway Type; 1-qt.	
Exhaust System	Single; Aluminized	
Emission Control Systems	See Engine & Cooling, page 27, for specific model applications	
Suspension, Front	Independent; Coil Springs	
Capacity	3400 lb.	3800 lb.
Springs @ Ground	1625 lb. ea.	1750 lb. ea.
Shock Absorbers	1" dia.	1" dia.
Suspension, Rear	Salisbury Axle; Hypoid Drive; Two-stage Multi-leaf Springs	
Axle Capacity	3750 lb.	5700 lb.
Axle Ratio—6 cyl.	3.73	—
—8 cyl.	3.40	3.73
Springs, Main @ Ground	2000 lb. ea.	2000 lb. ea.
Shock Absorbers	1" dia.	1" dia.
Brakes	Hydraulic; Self-adjusting	
Front	Disc; 11.86" Rotor	Disc; 12.5" Rotor
Rear	Drum; 11.15" x 2.75"	Drum; 11.15" x 2.75"
Booster	Dual Diaphragm	Dual Diaphragm
Parking	Cable to Rear Wheels	
Electrical	12 Volt; Negative Ground	
Battery—6 cyl.	2500 watts @ 0°F.	—
—8 cyl.	3200 watts @ 0°F.	
Delcotron Generator	37 amp.	
Frame	Carbon Steel; 39,000 psi	
Section Modulus	3.14	3.92
Fuel Tank (nominal capacity)	25 gal.	
Steering Gear Type	Manual; Recirculating Ball Gear	
Linkage	Parallelogram	
Transmission	Fully Synchronized 3-Speed	4-Speed CH465
Shift Location	Steering Column	Floor
Tires	6 cyl.—(5) H78-15B (4PR) 8 cyl.—(5) L78-15B (4PR)	(4) 8.75-16.5C (6PR)
Wheels	(5) Disc 15" x 6"	(5) Disc 16.5" x 6"

SUBURBAN—4-Wheel Drive

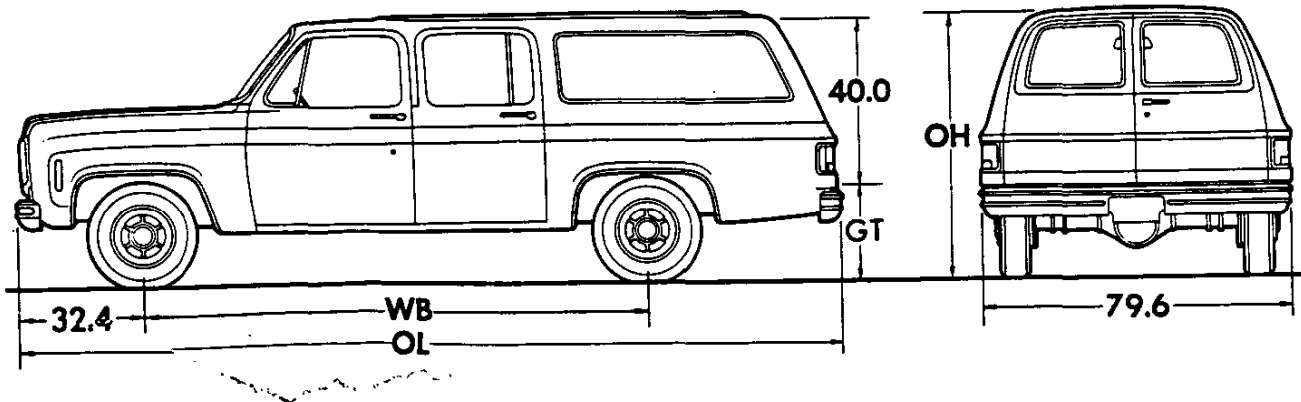
STANDARD SPECIFICATIONS

(See Blue Tab Section for Specification Details)

Series	K10	K20
Engine	350 4-bbl V8 12"; 150 sq. in.	
Base Equip.	Oiled-paper Element	
Clutch	Throwaway Type; 1-qt.	
Air Filter	Single; Aluminized	
Oil Filter	See Engine & Cooling, page 27, for specific model applications	
Exhaust System		
Emission Control Systems		
Suspension, Front	Salisbury Axle; Hypoid Drive; Single-stage 2-Leaf Springs	
Capacity	3600 lb.	3800 lb.
Axle Ratio	3.07	4.10
Springs @ Ground	1850 lb. ea.	1850 lb. ea.
Shock Absorbers	1" dia.	1" dia.
Stabilizer Bar	1.25" dia.	1.25" dia.
Suspension, Rear	Salisbury Axle; Hypoid Drive; Two-stage Multi-leaf Springs	
Axle Capacity	4000 lb.	5700 lb.
Axle Ratio	3.07	4.10
Springs @ Ground	2250 lb. ea.	2800 lb. ea.
Shock Absorbers	1" dia.	1" dia.
Brakes	Hydraulic; Self-adjusting	
Front	Disc; 11.86" Rotor	Disc; 12.5" Rotor
Rear	Drum; 11.15" x 2.75"	Drum; 11.15" x 2.75"
Booster	Dual Diaphragm	
Parking	Cable to Rear Wheels	
Electrical	12 Volt; Negative Ground	
Battery	3200 watts @ 0°F.	
Delcotron Generator	37 amp.	
Frame	Carbon Steel; 39,000 psi	
Section Modulus	3.92	
Fuel Tank (nominal capacity)	25 gal.	
Steering Gear Type	Manual; Recirculating Ball Gear	
Linkage	Conventional	
Transmission	Fully Synchronized 3-Speed	
Shift Location	Steering Column	
Transfer Case	New Process 205 2-Speed	
Shift Lever	Single Lever	
PTO Opening	Left Side	
Tires	(5) H78-15B (4PR)	(4) 8.75-16.5C (6PR)
Wheels	(5) Disc 15" x 6"	(5) Disc 16.5" x 6"

SUBURBAN

Body Ordering Codes:
Panel Rear Doors—ZW9
Endgate—E55†



Capacity—143.5 cu ft
Load Floor Area—40 sq ft

Series	Ground Clearance (in)★	
	Front	Rear
C10	7.5	7.2
C20	8	7.8
K10	8.7	7.2
K20	8.8	7.2

Model	Engine No. Cyl.	Dimensions (in)★				†Curb Weight (lb)			†Model Weight (lb)*		
		WB	OL	OH	GT	Front	Rear	Total	Front	Rear	Total

C10 SERIES

CC10906	6	129.5	218.7	71.5	27.5	2073	2178	4251	2316	2385	4701
	8					2219	2224	4443	2462	2431	4893

C20 SERIES

CC20906	8	129.5	218.7	71.8	27.2	2381	2444	4825	2624	2651	5275
---------	---	-------	-------	------	------	------	------	------	------	------	------

K10 SERIES

CK10906	8	129.5	218.7	73.5	29.5	2496	2317	4813	2739	2524	5263
---------	---	-------	-------	------	------	------	------	------	------	------	------

K20 SERIES

CK20906	8	129.5	218.7	75.5	32.0	2566	2484	5050	2809	2691	5500
---------	---	-------	-------	------	------	------	------	------	------	------	------

★Dimensions with standard equipment, unloaded.

*Model Weight includes Curb Weight plus occupants (standard seating capacity x 150 lb). Total Model Weight may vary as much as ±150 lbs to allow for production build variation.

†Curb Weights and Model Weights shown are for models with ZW9 Panel Rear Doors. For models with E55 Endgate, weights must be adjusted as follows: Front - 10 lb; Rear ±36 lb; Total added weight 26 lb.

SUBURBAN

GVWR SELECTOR

GVW Rating (lbs)	†GAWR (lbs)		Minimum Equipment Required for GVW Rating		
	Front	Rear	Tire Capacity (lbs ea)		Chassis Equipment
			Front	Rear	

C10 SERIES

GVW Rating (lbs)	Front GAWR (lbs)	Rear GAWR (lbs)	Front Tire Capacity (lbs ea)	Rear Tire Capacity (lbs ea)	Chassis Equipment
6050	3220	3220	1610	1610	Standard
6400	3250	3440	1720	1720	
6800	3250	3750	1900	1900	Center Seat (ATS) and Stabilizer Bar (F59); or Center and Rear Seats (AS3)
7000	3400	3750	1900	1900	Center and Rear Seats (AS3); 454 4-bbl V8 (LFB)

K10 SERIES

GVW Rating (lbs)	Front GAWR (lbs)	Rear GAWR (lbs)	Front Tire Capacity (lbs ea)	Rear Tire Capacity (lbs ea)	Chassis Equipment
6200	3220	3220	1610	1610	Standard
6800	3520	3520	1760	1760	
7300	3600	3820	1910	1910	

†GAWR's shown are the maximum for each axle with equipment listed. Other GAWR's are available, and they are determined as the minimum individual capacity of either axle, springs or tires.

●Center and rear seats (AS3) not available.

◆V8 model only.

FRONT AND REAR TIRE AVAILABILITY CHART

C-K10 SERIES

Spare tire to match either front or rear tires must be ordered
K10 models require matching front and rear tread

FRONT				REAR			
Capacity (lbs ea)	Description	Option Number		Capacity (lbs ea)	Description	Option Number	
		Highway	▲On-Off Road			Highway	On-Off Road

TUBELESS

1610	H78-15B	HL	—	1610	H78-15B	HL	HR
1610	H78-15B White Stripe	HM	—	1610	H78-15B White Stripe	HM	—
1760	10-15B	—	WR	1760	10-15B	—	WR●
1790	L78-15B	LB	LC	1790	L78-15B	LB	LC
1790	L78-15B White Stripe	LD	—	1790	L78-15B White Stripe	LD	—
*1900	L78-15D	LK	—	*1900	L78-15D	LK	—
*1900	L78-15D White Stripe	LL	—	*1900	L78-15D White Stripe	LL	—
**1900	LR78-15C Radial White Stripe	CD	—	**1900	LR78-15C Radial White Stripe	CD	—

TUBE-TYPE

1610	6.50-16C	MG	—	1610	6.50-16C	MG	—
1720	7.00-15C	NH	—	1720	7.00-15C	NH	—
1800	7.00-16C	NK	—	1800	7.00-16C	NK	NL

▲On-Off road front tires available on K10 models only.

●Available on K10 models only.

*Rated 2030 capacity on K10 models.

**Rated 1910 capacity on K10 models.

SUBURBAN

GVWR SELECTOR

GVW Rating (lbs)	†GAWR (lbs)		Minimum Equipment Required for GVW Rating		
			Tire Capacity (lbs ea)		Chassis Equipment
	Front	Rear	Front	Rear	

C20 SERIES

GVW Rating (lbs)	Front GAWR (lbs)	Rear GAWR (lbs)	Front Tire Capacity (lbs ea)	Rear Tire Capacity (lbs ea)	Chassis Equipment
7100	3500	3980	1990	1990	Standard
7500	3500	5200	2780	2780	HD Rear Springs (G50); HD Power Brakes (J55)
8200	3800	5560	2780	2780	HD Front Springs (F60); 2850-lb ea Rear Springs (G51); HD Power Brakes (J55)

K20 SERIES

GVW Rating (lbs)	Front GAWR (lbs)	Rear GAWR (lbs)	Front Tire Capacity (lbs ea)	Rear Tire Capacity (lbs ea)	Chassis Equipment
6800	3700	3980	1990	1990	Standard
7500	3700	4700	1990	2350	HD Power Brakes (J55)
8400	3700	5500	2060	2750	

†GAWR's shown are the maximum for each axle with equipment listed. Other GAWR's are available, and they are determined as the minimum individual capacity of either axle, springs or tires.

FRONT AND REAR TIRE AVAILABILITY CHART

C-K20 SERIES

Spare tire to match either front or rear tires is available at extra cost
K20 models require matching front and rear tread

FRONT				REAR			
Capacity (lbs ea)	Description	Option Number		Capacity (lbs ea)	Description	Option Number	
		Highway	△On-Off Road			Highway	On-Off Road

TUBELESS

Capacity (lbs ea)	Description	Option Number	Option Number	Capacity (lbs ea)	Description	Option Number	Option Number
1990	8.75-16.5C	TC	TB	1990	8.75-16.5C	TC	TB
				2350	8.75-16.5D	TE	TF
2350	8.75-16.5D	TE	TF	2350	8.75-16.5D	TE	TF
2750	10-16.5D	—	WF	2750	10-16.5D	—	WF [Ⓢ]
2780	9.50-16.5D	UD	UE	2780	9.50-16.5D	UD	UE

TUBE-TYPE

Capacity (lbs ea)	Description	Option Number	Option Number	Capacity (lbs ea)	Description	Option Number	Option Number
2060	7.50-16C	PB	PC	2060	7.50-16C	PB	PC
				2440	7.50-16D	PF	PG
				2780	7.50-16E	PK	PL
2440	7.50-16D	PF	PG	2440	7.50-16D	PF	PG
2780	7.50-16E	PK	PL	2780	7.50-16E	PK	PL

△On-Off road front tires available on K20 models only.

Ⓢ Available on K20 models only.

NOTES

SUBURBAN

POWER TEAMS

ENGINE	TRANSMISSION	TRANSFER CASE	REAR AXLE	
			Make and Capacity (lb)	Ratio and Code

C10 SERIES

ENGINE	TRANSMISSION	TRANSFER CASE	Make and Capacity (lb)	3.07	3.40	3.73	4.11
				HE3	HE4	GT4	HO4
● 250 1-bbl L6—LD4 (Standard Six)	3-Speed Manual (Std)—M15	—	Chevrolet 3750♦	—	—	X(Std)	X
	4-Speed (Chevrolet CH465)—M20			—	—	X(Std)	X
	Turbo Hydra-matic—M40			—	—	X(Std)	X
■ 350 4-bbl V8—LS9 (Standard V8)	3-Speed Manual (Std)—MC1			—	X(Std)	X	—
	4-Speed (Chevrolet CH465)—M20			—	X(Std)	X	—
	Turbo Hydra-matic—M40			X(Std)	X	X	X
■ 454 4-bbl V8—LF8	Turbo Hydra-matic—M40			X(Std)	X	X	—

C20 SERIES

ENGINE	TRANSMISSION	TRANSFER CASE	Make and Capacity (lb)	3.21	3.73	4.10	4.56
				HC8b	GT4	GT5	HC4
■ 350 4-bbl V8—LS9 (Standard V8)	4-Speed (Chevrolet CH465) (Std)—M20	—	Chevrolet 5700♦	—	X(Std)	X	X
	Turbo Hydra-matic—M40			—	X(Std)	X	X
■ 454 4-bbl V8—LF8	Turbo Hydra-matic—M40					X	X(Std)

K10 SERIES

ENGINE	TRANSMISSION	TRANSFER CASE	Make and Capacity (lb)	3.07	3.73	4.11
				HE3	GT4	HO4
■ 350 4-bbl V8—LS9 (Standard V8)	3-Speed Manual (Std)—MC1	New Process #205	Chevrolet 4000♦	X(Std) ^a	X	X
	4-Speed (Chevrolet CH465)—M20			X(Std)	X	X
	Turbo Hydra-matic—M40	New Process #203		X(Std)	X	X
■ 400 4-bbl V8—LF4	Turbo Hydra-matic—M40			X(Std)	X	X

K20 SERIES

ENGINE	TRANSMISSION	TRANSFER CASE	Make and Capacity (lb)	4.10
				GT5
■ 350 4-bbl V8—LS9 (Standard V8)	3-Speed Manual (Std)—MC1	New Process #205	Chevrolet 5700♦	X(Std)
	4-Speed (Chevrolet CH465)—M20			X(Std)
	Turbo Hydra-matic—M40	New Process #203		X(Std)
■ 400 4-bbl V8—LF4	Turbo Hydra-matic—M40			X(Std)

- Available for registration in the State of California when California Emission Certification is ordered.
- Not available for registration in the State of California.
- ♦ Locking Differential rear axle also available.
- ^a Not recommended.
- ^b Locking Differential rear axle not available.

ENGINE RATINGS

SAE Net Ratings @ 85°F	250 1-bbl L6	350 4-bbl V8	400 4-bbl V8	454 4-bbl V8
Net Horsepower	100 @ 3600 rpm	165 @ 3800 rpm	175 @ 3600 rpm	†240 @ 3800 rpm
Net Torque, lb-ft	175 @ 1800 rpm	255 @ 2800 rpm	290 @ 2800 rpm	†370 @ 2800 rpm

†For California only: Net Horsepower—250 @ 3800 rpm
Net Torque, lb-ft—385 @ 2800 rpm

SUBURBAN 1976 VEHICLES WITH STANDARD EQUIPMENT

Prices shown are effective with vehicles manufactured on or after December 23, 1975

Description	Model Number	Code	Wheel-base	Factory D&H [§]	List Price	Mfr's Sg'd Retail Price [★]	Destination Charge & Group Number	Total
◆ 6-Cylinder 250-1 BBL Engine—Engine Ordering Code LD4								
C10 Series 2-Wheel Drive								
Panel Doors	CC10906	ZW9	129.5"	14.60	4793.00	4807.60	15	_____
End Gate	CC10906	E55	129.5"	14.60	4824.00	4838.60	15	_____
◆ 8-Cylinder 350-4 BBL Engine—Engine Ordering Code LS9								
C10 Series 2-Wheel Drive								
Panel Doors	CC10906	ZW9	129.5"	16.05	5040.00	5056.05	15	_____
End Gate	CC10906	E55	129.5"	16.05	5071.00	5087.05	15	_____
C20 Series 2-Wheel Drive								
Panel Doors	CC20906	ZW9	129.5"	14.96	5329.00	5343.96	15	_____
End Gate	CC20906	E55	129.5"	14.96	5360.00	5374.96	15	_____
K10 Series 4-Wheel Drive								
Panel Doors	CK10906	ZW9	129.5"	14.60	5930.00	5944.60	16	_____
End Gate	CK10906	E55	129.5"	14.60	5961.00	5975.60	16	_____
K20 Series 4-Wheel Drive								
Panel Doors	CK20906	ZW9	129.5"	14.96	6211.00	6225.96	16	_____
End Gate	CK20906	E55	129.5"	14.96	6242.00	6256.96	16	_____

★ Manufacturer's Suggested Retail Prices do not include applicable destination charges, state and local taxes, license fees, options or accessories.
 ◆ Refer to Power Team Chart for California Emission Certification Requirements.

OPTIONS AND ACCESSORIES WHEN INSTALLED BY CHEVROLET

Prices shown are effective with vehicles manufactured on or after December 23, 1975

Description	Added Weight (F) (R)	Option Number	Factory D&H [§]	List Price	Mfr's Suggested Retail Price [◇]
-------------	----------------------	---------------	--------------------------	------------	---

POWER TEAMS AND AXLES

(See Power Teams Chart for availability and complete specifications)

Engines:

400-4 BBL V8. V8 K10-20 series only. Available only when M40 Turbo Hydra-matic transmission is specified.	12	39	LF4	N.A.	144.00	144.00
454-4 BBL V8. V8 C10-20 series only. Available only when M40 Turbo Hydra-matic transmission is specified. Includes UA1 HD battery and M41 power steering.						
C10 series only.	169	89	LF8	N.A.	420.00	420.00
C20 series only.	152	4	LF8	N.A.	420.00	420.00

Liquid Petroleum Gas Conversion: All 1976 Chevrolet Light Duty Truck gasoline production engines may be converted to use LP Gas when permissible under Federal and State laws and regulations without causing harmful effect to the engine. Complete conversion to LPG requires adaptation by a local distributor who sells and services LPG equipment. Caution should be exercised so that the fuel tank is mounted on and is vented to the outside of the vehicle. In addition, vehicles converted to LPG should not be stored in enclosed places such as garages.

Transmissions:

Turbo Hydra-matic. C-K20 series includes extra cooling.						
With LD4 250-1 BBL engine. C10 series only	22	7	M40	N.A.	300.00	300.00 [◇]
With LS9 350-4 BBL engine.						
C10 series only.	16	0	M40	N.A.	300.00	300.00
C20 series only.	-44	-18	M40	N.A.	300.00	300.00
K10-20 series only.	56	21	M40	N.A.	300.00	300.00
With LF4 400-4 BBL engine. K10-20 series only.	56	21	M40	N.A.	300.00	300.00
With LF8 454-4 BBL engine.						
C10 series only.	29	11	M40	N.A.	311.00	311.00
C20 series only.	-26	-11	M40	N.A.	311.00	311.00
Chevrolet 4-Speed. C-K10 or K20 series only. Standard on C20 series. Available only when LD4 250-1 BBL engine or LS9 350-4 BBL engine is specified.	78	21	M20	N.A.	135.00	135.00

§ D&H amounts reflect provision for pass through of tire weight tax imposed on manufacturer or importer of tires.
 ◇ State and local taxes not included.

SUBURBAN

OPTIONS AND ACCESSORIES WHEN INSTALLED BY CHEVROLET

Prices shown are effective with vehicles manufactured on or after December 23, 1975

Description	Added Weight (F) (R)	Option Number	Factory D&H [§]	List Price	Mfr's Suggested Retail Price [◇]
OTHER OPTIONS					
Air Cleaner: Poly-Wrap	0 0	K43	N.A.	13.00	13.00
Air Conditioning: Available only when V8 engine is specified. Includes extra cooling and K76 61-amp generator. Front. Recommended for front seat area cooling only.					
Without Z62 Scottsdale or YE9 Silverado. Also includes B85 headliner.					
C10 series only.					
With LS9 350-4 BBL engine	102 34	C60	N.A.	576.00	576.00
With LF8 454-4 BBL engine	98 32	C60	N.A.	576.00	576.00
K10 series only	102 34	C60	N.A.	576.00	576.00
C-K20 series only.					
Without M40 Turbo Hydra-matic transmission.					
C20 series only	102 34	C60	N.A.	576.00	576.00
K20 series only	104 34	C60	N.A.	576.00	576.00
With M40 Turbo Hydra-matic transmission					
C20 series only	95 32	C60	N.A.	576.00	576.00
K20 series only	97 33	C60	N.A.	576.00	576.00
With YE9 Silverado or Z62 Scottsdale.					
C10 series only.					
With LS9 350-4 BBL engine	94 11	C60	N.A.	481.00	481.00
With LF8 454-4 BBL engine	90 9	C60	N.A.	481.00	481.00
K10 series only	94 11	C60	N.A.	481.00	481.00
C-K20 series only.					
Without M40 Turbo Hydra-matic transmission.					
C20 series only	94 11	C60	N.A.	481.00	481.00
K20 series only	96 11	C60	N.A.	481.00	481.00
With M40 Turbo Hydra-matic transmission.					
C20 series only	87 9	C60	N.A.	481.00	481.00
K20 series only	89 10	C60	N.A.	481.00	481.00
Independent Front and Rear Roof Mounted. Available only when YE9 Silverado or Z62 Scottsdale is specified. Rear system operates on recirculating air.					
C10 series only.					
With LS9 350-4 BBL engine	111 48	C69	N.A.	743.00	743.00
With LF8 454-4 BBL engine	107 46	C69	N.A.	743.00	743.00
K10 series only	111 48	C69	N.A.	743.00	743.00
C-K20 series only.					
Without M40 Turbo Hydra-matic transmission.					
C20 series only	111 48	C69	N.A.	743.00	743.00
K20 series only	113 48	C69	N.A.	743.00	743.00
With M40 Turbo Hydra-matic transmission.					
C20 series only	104 46	C69	N.A.	743.00	743.00
K20 series only	106 47	C69	N.A.	743.00	743.00
Batteries:					
<i>Auxiliary.</i> 3500 Watt Delco Freedom.					
C10 or K10-20 series only	44 -8	TP2	N.A.	84.00	84.00
C20 series only	42 -6	TP2	N.A.	84.00	84.00
<i>Heavy-Duty.</i> 4000 Watt Delco Freedom.					
Without V8 engine	14 -2	UA1	N.A.	31.00	31.00
With V8 engine. Included when LF8 454-4 BBL engine, Z82 Trailing Special or Z66 Cold-Climate Package is specified ..	2 0	UA1	N.A.	31.00	31.00
C-K20 series only	4 42	J55	N.A.	50.00	50.00
Bumper Equipment:					
<i>Bumpers, Deluxe.</i> Front and Rear. Not available when V31 bumper guards are specified. Includes black resilient impact strips and V37 front and rear bumpers.					
Without YE9 Silverado or Z62 Scottsdale	2 2	VE5	N.A.	72.00	72.00
With YE9 Silverado or Z62 Scottsdale	2 2	VE5	N.A.	28.00	28.00
<i>Bumpers, Chromed Front and Rear.</i> Included when YE9 Silverado or Z62 Scottsdale is specified					
C10 series only	0 0	V37	N.A.	44.00	44.00
<i>Guards, Chromed Front Bumper.</i> Available only when V37 front and rear bumpers, YE9 Silverado or Z62 Scottsdale is specified					
C10 series only	11 -2	V31	N.A.	29.00	29.00
California Emission Certification: Includes all testing, equipment and /or certification necessary for registration in the State of California (<i>See Power Teams Chart for availability and complete specifications</i>)					
C10 series only	0 0	YF5	N.A.	75.00	75.00

[§] D&H amounts reflect provision for pass through of tire weight tax imposed on manufacturer or importer of tires.
[◇] State and local taxes not included.

SUBURBAN

OPTIONS AND ACCESSORIES WHEN INSTALLED BY CHEVROLET

Prices shown are effective with vehicles manufactured on or after December 23, 1975

Description	Added Weight (F) (R)	Option Number	Factory D&H [§]	List Price	Mfr's Suggested Retail Price [◇]
OTHER OPTIONS					
Carpeting, Floor and Wheelhouse: Available only when Z62 Scottsdale and AT5 or AS3 seats are specified. Includes color-keyed carpeting when blue, red or saddle trim is specified.	-6 46	B30	N.A.	93.00	93.00
Clock, Electric: Not available when U16 tachometer is specified. Without YE9 Silverado. Includes Z53 voltmeter, temperature and oil pressure gauges.	1 0	U35	N.A.	42.00	42.00
With YE9 Silverado	0 0	U35	N.A.	22.00	22.00
Cold-Climate Package: Not available when C60 front air conditioning or C69 front and rear air conditioning is specified. Includes 55-amp generator, super heater and defroster, engine block heater and anti-freeze protection to -32 degrees. Also includes UA1 HD battery without Z82 Trailing Special.					
With LD4 250-1 BBL engine. C10 series only	18 -2	Z56	N.A.	115.00	115.00
With LS9 350-4 BBL or LF4 400-4 BBL engine.					
Without Z82 Trailing Special	4 0	Z56	N.A.	115.00	115.00
With Z82 Trailing Special	4 0	Z56	N.A.	84.00	84.00
With LF8 454-4 BBL engine	4 0	Z56	N.A.	84.00	84.00
Cooler, Engine Oil: Recommended for heavy duty trailering. Available only when V8 engine is specified.	9 -1	KC4	N.A.	78.00	78.00
Cooling: Radiator, Heavy-Duty. Not available when C60 front air conditioning or C69 front and rear air conditioning is specified. C-K10 series only.					
With LD4 250-1 BBL or LF8 454-4 BBL engine. C10 series only	4 -1	V01	N.A.	32.00	32.00
With LS9 350-4 BBL or LF4 400-4 BBL engine	8 -1	V01	N.A.	32.00	32.00
C20 series only. Also not available when M40 Turbo Hydra-matic transmission is specified.					
Without LF8 454-4 BBL engine	6 -1	V01	N.A.	32.00	32.00
With LF8 454-4 BBL engine	4 -1	V01	N.A.	32.00	32.00
K20 series only. Also not available when M40 Turbo Hydra-matic transmission is specified.	6 -1	V01	N.A.	32.00	32.00
Exhaust System, Dual: K10-20 series only. Available only when LS9 350-4 BBL engine is specified. For use in States with noise level limit lower than 86dBA.	18 23	N10	N.A.	32.00	32.00
Gauges:					
Voltmeter, Temperature and Oil Pressure. Included when YE9 Silverado, U35 electric clock or U16 tachometer is specified.	1 0	Z53	N.A.	20.00	20.00
Tachometer. Available only when V8 engine is specified. Not available when U35 electric clock is specified.					
Without YE9 Silverado. Includes Z53 voltmeter, temperature and oil pressure gauges.	2 0	U16	N.A.	73.00	73.00
With YE9 Silverado	1 0	U16	N.A.	53.00	53.00
Generator: 67-amp Delcotron. Included when C60 front air conditioning or C69 front and rear air conditioning is specified.					
Without Z56 Cold-Climate Package	1 0	K76	N.A.	38.00	38.00
With Z56 Cold-Climate Package	1 0	K76	N.A.	NO ADDITIONAL CHARGE	NO ADDITIONAL CHARGE
Glass: Soft-Ray Tinted. All Windows	0 0	A01	N.A.	41.00	41.00
Grille: Chromed.	0 0	V22	N.A.	23.00	23.00
Guards, Door Edge: Not available when YG2 wood-grained exterior trim is specified	0 0	893	N.A.	11.00	11.00
Harness, Trailer Wiring: Heavy-Duty.	0 2	UY7	N.A.	29.00	29.00
Headlamp Warning Buzzer.	0 0	T63	N.A.	8.00	8.00
Headliner, Interior: Included when YE9 Silverado, Z62 Scottsdale, C60 front air conditioning or C69 front and rear air conditioning is specified. Includes C91 dome lamp	8 23	885	N.A.	94.00	94.00
Instrument Panel, Wood-Grained: Available only when Z53 voltmeter, temperature and oil pressure gauges are specified. Not available when YE9 Silverado is specified	0 0	BC2	N.A.	32.00	32.00
Lamps:					
Dome. Two. Included when 885 headliner, YE9 Silverado or Z62 Scottsdale is specified. Includes door actuated switches and bright bezels	0 0	C91	N.A.	21.00	21.00
Roof Marker. Five. Not available for registration in the State of California	3 1	U01	N.A.	32.00	32.00

§ D&H amounts reflect provision for pass through of tire weight tax imposed on manufacturer or importer of tires.

◇ State and local taxes not included.

SUBURBAN

OPTIONS AND ACCESSORIES WHEN INSTALLED BY CHEVROLET

Prices shown are effective with vehicles manufactured on or after December 23, 1975

Description	Added Weight (F) (R)		Option Number	Factory D&M [‡]	List Price	Mfr's Suggested Retail Price ◊
OTHER OPTIONS						
Lighter, Cigarette: Included when YE9 Silverado or Z62 Scottsdale is specified.	0	0	U37	N.A.	9.00	9.00
Mirrors, Exterior: LH and RH. <i>Below-Eye-Line Type.</i> 7.5" x 10.5". Provides field of vision for vehicles to 80" wide.						
<i>Painted</i>	3	1	D29	N.A.	24.00	24.00
<i>Stainless Steel</i>	3	1	DG4	N.A.	43.00	43.00
Camper Type. Stainless steel. Includes below-eye-line mirrors with adjustable arm feature to provide field of vision for vehicles to 96" wide. Shipped loose for dealer installation.	7	2	DF2	N.A.	61.00	61.00
Moldings:						
<i>Body Side Spear.</i> Bright with black insert. Not available when ZY3 special two-tone paint, YE9 Silverado, YG2 wood-grained exterior trim, B85 body side upper moldings or YG1 body side upper and lower moldings are specified. Included when Z62 Scottsdale is specified.	0	0	B84	N.A.	53.00	53.00
<i>Body Side Upper.</i> Not available when ZY3 special two-tone paint, YG2 wood-grained exterior trim, B84 body side spear moldings or YG1 body side upper and lower moldings are specified. Included when YE9 Silverado is specified. Includes fender, door, rear side panel, rear door or tailgate moldings plus bright front turn signal, front side marker and taillight trim.						
Without Z62 Scottsdale	2	3	B85	N.A.	55.00	55.00
With Z62 Scottsdale	2	3	B85	N.A.	2.00	2.00
<i>Body Side Upper and Lower.</i> Not available when B84 body side spear moldings are specified. Included when ZY3 special two-tone paint or YG2 wood-grained trim is specified. Also includes lower body side, rear door or tailgate and wheel opening moldings.						
Without YE9 Silverado or Z62 Scottsdale. Also includes B85 body side upper moldings described above.	3	4	YG1	N.A.	133.00	133.00
With YE9 Silverado	3	4	YG1	N.A.	78.00	78.00
With Z62 Scottsdale. Also includes B85 body side upper moldings described above	3	4	YG1	N.A.	80.00	80.00
Paints, Exterior: See Interior and Exterior Color Selection Chart for ordering information						
<i>Solid</i>	0	0	ZY1	NO ADDITIONAL CHARGE		
<i>Special Two-Tone.</i> Area between upper and lower side moldings painted secondary color. Includes YG1 body side upper and lower moldings						
Without YE9 Silverado or Z62 Scottsdale	3	4	ZY3	N.A.	215.00	215.00
With Z62 Scottsdale	3	4	ZY3	N.A.	162.00	162.00
With YE9 Silverado	3	4	ZY3	N.A.	160.00	160.00
Plate: Serial Number (State of Pennsylvania) "K" Plate. Not required on C10-20 series. K10 series available only when 1910-lb or larger capacity tires are specified. K20 series available only when J55 brakes and 2350-lb or larger capacity rear tires are specified.	0	0	Z55	NO ADDITIONAL CHARGE		
Plate, Fuel Tank Shield:						
C10-20 series only						
Without NE2 fuel tank	-8	53	NY1	N.A.	33.00	33.00
With NE2 fuel tank	-8	53	NY1	N.A.	84.00	84.00
K10-20 series only. Includes transfer case skid plate.						
Without NE2 fuel tank	-8	53	NY1	N.A.	61.00	61.00
With NE2 fuel tank	-8	53	NY1	N.A.	112.00	112.00
Radio Equipment:						
<i>AM Radio.</i> Pushbutton. Includes U76 antenna	7	2	U63	N.A.	75.00	75.00
<i>AM /FM Radio.</i> Pushbutton. Includes U76 antenna	7	2	U69	N.A.	151.00	151.00
<i>Windshield Antenna.</i> Included when U63 AM radio or U69 AM /FM radio is specified	0	0	U76	N.A.	16.00	16.00
Seat, Front: Full-Depth Foam. Included when YE9 Silverado or Z62 Scottsdale is specified	-1	-1	Z52	N.A.	34.00	34.00

[‡] D&H amounts reflect provision for pass through of tire weight tax imposed on manufacturer or importer of tires.
◊ State and local taxes not included.

SUBURBAN

OPTIONS AND ACCESSORIES WHEN INSTALLED BY CHEVROLET

Prices shown are effective with vehicles manufactured on or after December 23, 1975

Description	Added Weight (F) (R)	Option Number	Factory D&H [‡]	List Price	Mfr's Suggested Retail Price [◇]
OTHER OPTIONS					
Seats: Seat trim matches front seat whether standard or optional. Includes seat area floor covering, floor insulation and (3) seat belts. (Added weight includes passenger weight allowance of 150-lbs per seating position).					
<i>Center only.</i> Non-Adjustable type with independent LH and RH folding sections.					
Without YE9 Silverado	151 415	AT5	N.A.	250.00	250.00
With YE9 Silverado	153 419	AT5	N.A.	250.00	250.00
<i>Center and Rear.</i> Includes non-adjustable center and removable type rear seats, (3) additional seat belts plus LH and RH rear arm rests with ash trays.					
C10 series only. Available only when LL or LK L78-15 /D or CD LR78-15 /C tires are specified. Not available when LD4 250-1 BBL engine is specified. Also includes F59 stabilizer.					
Without YE9 Silverado	131 963	AS3	N.A.	441.00	441.00
With YE9 Silverado	133 967	AS3	N.A.	441.00	441.00
K10 series only. Available only when LL or LK L78-15 /D or CD LR78-15 /C tires are specified.					
Without YE9 Silverado	112 963	AS3	N.A.	420.00	420.00
With YE9 Silverado	116 969	AS3	N.A.	420.00	420.00
C-K20 series only					
Without YE9 Silverado	112 963	AS3	N.A.	420.00	420.00
With YE9 Silverado	116 969	AS3	N.A.	420.00	420.00
Seat Trim: Driver and Passenger. Available only when Z62 Scottsdale or YE9 Silverado is specified.					
<i>Custom Cloth, Special</i>					
With Z62 Scottsdale					
Without AT5 or AS3 seats	0 0	...	N.A.	36.00	36.00
With AT5 center seat without AS3 center and rear seats	0 0	...	N.A.	84.00	84.00
With AS3 center and rear seats	0 0	...	N.A.	120.00	120.00
With YE9 Silverado					
Without AT5 or AS3 seats	0 0	...	NO ADDITIONAL CHARGE		
With AT5 center seat without AS3 center and rear seats	0 0	...	N.A.	99.00	99.00
With AS3 center and rear seats	0 0	...	N.A.	135.00	135.00
<i>Custom Vinyl.</i>					
With Z62 Scottsdale					
Without AT5 or AS3 Seats	0 0	...	N.A.	36.00	36.00
With AT5 center seat without AS3 center and rear seats	0 0	...	N.A.	84.00	84.00
With AS3 center and rear seats	0 0	...	N.A.	120.00	120.00
With YE9 Silverado					
Without AT5 or AS3 seats	0 0	...	NO ADDITIONAL CHARGE		
With AT5 center seat without AS3 center and rear seats	0 0	...	N.A.	99.00	99.00
With AS3 center and rear seats	0 0	...	N.A.	135.00	135.00
With AS3 center and rear seats	3 3	F51	N.A.	19.00	19.00
Shock Absorbers: Front and Rear, Heavy Duty					
Speed and Cruise Control: Available only when V8 engine and M40 Turbo Hydra-matic transmission are specified					
	5 0	K30	N.A.	73.00	73.00
Springs:					
<i>Front, Heavy-Duty. Capacity 1900-lb each.</i>					
C20 series only	-3 0	F60	N.A.	8.00	8.00
K10-20 series only	24 0	F60	N.A.	38.00	38.00
<i>Rear, Heavy-Duty. Capacity 2600-lb each. C20 series only.</i>	0 26	G50	N.A.	36.00	36.00
<i>Rear, Extra Capacity. Capacity 2850-lb each. C20 series only.</i>	0 38	G51	N.A.	40.00	40.00
Stabilizers:					
<i>Front. 1" diameter. C10-20 series only. Included when AS3 seats are specified on C10 series.</i>					
	19 0	F59	N.A.	21.00	21.00
<i>Front, Heavy-Duty. Standard on K10-20 series. Not available on C10 series.</i>					
	23 0	F58	N.A.	28.00	28.00
Steering, Power: Included when Z82 Trailering Special or LF8 454-4 BBL engine is specified.					
C10 series only.					
With LD4 250-1 BBL engine	35 0	N41	N.A.	181.00	181.00
With LS9 350-4 BBL engine	29 0	N41	N.A.	161.00	161.00
C20 series only	29 0	N41	N.A.	161.00	161.00
K10-20 series only	33 0	N41	N.A.	179.00	179.00

[‡] D&H amounts reflect provision for pass through of tire weight tax imposed on manufacturer or importer of tires.
[◇] State and local taxes not included.

SUBURBAN

OPTIONS AND ACCESSORIES WHEN INSTALLED BY CHEVROLET

Prices shown are effective with vehicles manufactured on or after December 23, 1975

Description	Added Weight (F) (R)	Option Number	Factory D&H [§]	List Price	Mfr's Suggested Retail Price [◇]
OTHER OPTIONS					
Steering Wheels:					
<i>Comfortif:</i> Not available when M15 3-speed transmission is specified.					
With M40 Turbo Hydra-matic transmission	2 0	N33	N.A.	64.00	64.00
With M20 4-speed transmission	3 1	N33	N.A.	64.00	64.00
<i>Custom:</i>					
C10-20 series only. Included when YE9 Silverado is specified ..	0 0	N31	N.A.	12.00	12.00
K10-20 series only. Available only when N41 power steering is specified. Includes 16" steering wheel	0 0	N31	N.A.	12.00	12.00
Tank, Fuel: Replaces production fuel tank.					
<i>Approximately 31-Gallon Capacity</i>	-6 50	NK7	N.A.	22.00	22.00
<i>Approximately 40-Gallon Capacity</i>	-15 121	NE2	N.A.	80.00	80.00
Tires and Wheels: See following pages					
Towing Device: Two front towing hooks. K10-20 series only .					
18"	18 -3	V76	N.A.	28.00	26.00
Trailer Hitch:					
<i>Deadweight Type</i>	-10 35	VR2	N.A.	37.00	37.00
<i>Weight Distributing Platform Type</i>	-21 70	VR4	N.A.	105.00	105.00
Trailer Special: Available only when V8 engine, M20 4-speed or M40 Turbo Hydra-matic transmission and K76 61-amp generator or C60 front air conditioning or C69 front and rear air conditioning are specified. Also requires use of V01 HD radiator with M20 4-speed transmission unless C60 front air conditioning or C69 front and rear air conditioning is specified. Includes UA1 HD battery and N41 power steering without LFB 454-4 BBL engine, and Trailing Special emblem. <i>See Chart A on the Trailing Special Package page for Suburban, under the Recreational Vehicles Tab, for GCW ratings with available power teams combinations.</i>					
C10 series only.					
Without LFB 454-4 BBL engine	49 -2	Z82	N.A.	192.00	192.00
With LFB 454-4 BBL engine	0 0	Z82	<i>NO ADDITIONAL CHARGE</i>		
C20 series only					
Without LFB 454-4 BBL engine	31 0	Z82	N.A.	192.00	192.00
With LFB 454-4 BBL engine	0 0	Z82	<i>NO ADDITIONAL CHARGE</i>		
K10-20 series only	35 0	Z82	N.A.	210.00	210.00

[§] D&H amounts reflect provision for pass through of tire weight tax imposed on manufacturer or importer of tires.
[◇] State and local taxes not included.

SUBURBAN

OPTIONS AND ACCESSORIES WHEN INSTALLED BY CHEVROLET

Prices shown are effective with vehicles manufactured on or after December 23, 1975

Description	Added Weight (F) (R)	Option Number	Factory D&H [§]	List Price	Mfr's Suggested Retail Price ◊	
OTHER OPTIONS						
Wheel Trim: Bright Metal.						
Hub Caps. C-K10 series not available when N67 rally wheels are specified. Included when Z62 Scottsdale or YE9 Silverado is specified.						
C10 series only.	0	0	P03	N.A.	14.00	14.00
C20 series only. Not available when 7.50-16 tires and P06 trim rings are specified	0	0	P03	N.A.	14.00	14.00
K10 series only.	2	2	P03	N.A.	17.00	17.00
K20 series only. Not available when 7.50-16 tires and P06 trim rings are specified	2	2	P03	N.A.	17.00	17.00
Trim Rings. Available only when YE9 Silverado, Z62 Scottsdale or P03 hub caps are specified. Not available on C-K20 series when H78-15 tires are specified or on C-K20 series when 7.50-16 tires are specified. Included when N67 rally wheels are specified. . . .						
Wheel Covers. Not available on K20 series.						
C10 series only.						
Without YE9 Silverado or Z62 Scottsdale.						
Without MG 6.50-16 /C or NK or NL 7.00-16 /C tires	4	4	P01	N.A.	32.00	32.00
With MG 6.50-16 /C or NK or NL 7.00-16 /C tires. Includes P06 trim rings.	6	6	P01	N.A.	68.00	68.00
With YE9 Silverado or Z62 Scottsdale.						
Without MG 6.50-16 /C or NK or NL 7.00-16 /C tires	4	4	P01	N.A.	18.00	18.00
With MG 6.50-16 /C or NK or NL 7.00-16 /C tires. Includes P06 trim rings.	6	6	P01	N.A.	54.00	54.00
C20 series only. Includes P06 trim rings.						
Without YE9 Silverado or Z62 Scottsdale	7	7	P01	N.A.	68.00	68.00
With YE9 Silverado or Z62 Scottsdale	7	7	P01	N.A.	54.00	54.00
K10 series only. Not available when WR 10-15 tires are specified.						
Without YE9 Silverado or Z62 Scottsdale.						
Without MG 6.50-16 /C or NK or NL 7.00-16 /C tires	6	6	P01	N.A.	35.00	35.00
With MG 6.50-16 /C or NK or NL 7.00-16 /C tires. Includes P06 trim rings	8	8	P01	N.A.	71.00	71.00
With YE9 Silverado or Z62 Scottsdale.						
Without MG 6.50-16 /C or NK or NL 7.00-16 /C tires	6	6	P01	N.A.	18.00	18.00
With MG 6.50-16 /C or NK or NL 7.00-16 /C tires. Includes P06 trim rings	8	8	P01	N.A.	54.00	54.00
Wheels, Rally: C-K10 series only. Not available when MG 6.50-16 /C, NH 7.00-15 /C or NK or NL 7.00-16 /C tires are specified. Includes special hub caps and P06 trim rings.						
Without YE9 Silverado or Z62 Scottsdale.						
C10 series only. Also includes 15" x 7" wheels	5	9	N67	N.A.	79.00	79.00
K10 series only.						
Without WR 10-15 /B tires. Also includes 15" x 7" wheels	7	12	N67	N.A.	79.00	79.00
With WR 10-15 /B tires. Also includes 15" x 8" wheels.	9	15	N67	N.A.	79.00	79.00
With YE9 Silverado or Z62 Scottsdale.						
C10 series only. Also includes 15" x 7" wheels	5	9	N67	N.A.	65.00	65.00
K10 series only. Available only when M40 Turbo Hydra-matic transmission is specified.						
Without WR 10-15 /B tires. Also includes 15"x 7" wheels	7	12	N67	N.A.	62.00	62.00
With WR 10-15 /B tires. Also includes 15" x 8" wheels.	9	15	N67	N.A.	62.00	62.00
Window, Tailgate: Electric. End Gate series only	-2	7	A33	N.A.	53.00	53.00
Wood-Grained Exterior Trim: Not available when ZY3 special two-tone paint, B84 body side spear moldings or B85 body side upper moldings are specified. Includes Estate nameplate and YG1 body side upper and lower moldings.						
Without Z62 Scottsdale or YE9 Silverado.	3	4	YG2	N.A.	255.00	255.00
With Z62 Scottsdale	3	4	YG2	N.A.	202.00	202.00
With YE9 Silverado	3	4	YG2	N.A.	200.00	200.00

§ D&H amounts reflect provision for pass through of tire weight tax imposed on manufacturer or importer of tires.
 ◊ State and local taxes not included.

SUBURBAN

FACTORY INSTALLED TIRES

See Tire Chart for Available Front/Rear Combinations.
Spare tire available to match either front or rear tires.
Prices shown are effective with vehicles manufactured on or after December 23, 1975

Tire Size Type	Rim Width Included In Tire Option	Added Weight (F) (R)	Option Number	Factory D&H [§]	List Price	Mfr's Suggested Retail Price [◇]
C10 SERIES						
TUBELESS TIRES USED WITH SINGLE REAR WHEELS						
H78-15 /B Passenger Type. Maximum Tire Capacity (Each)— Front (1610) Rear (1610)						
<i>WITH LD4 6-CYLINDER ENGINE ONLY</i>						
Highway Bias Belted Ply Blackwall						
Front (Standard)	6.00	0 0	XHL			<i>NO ADDITIONAL CHARGE</i>
Rear (Standard)	6.00	0 0	YHL			<i>NO ADDITIONAL CHARGE</i>
Spare (Standard)	6.00	0 0	ZHL			<i>NO ADDITIONAL CHARGE</i>
Highway Bias Belted Ply White Stripe						
Front	6.00	0 0	XHM	N.C.	16.00	16.00
Rear	6.00	0 0	YHM	N.C.	16.00	16.00
Spare	6.00	0 0	ZHM	N.C.	8.00	8.00
On-Off Road Bias Belted Ply Blackwall						
Rear	6.00	0 5	YHR	N.C.	8.00	8.00
Spare	6.00	-1 4	ZHR	N.C.	4.00	4.00
L78-15 /B Passenger Type. Maximum Tire Capacity (Each)— Front (1790) Rear (1790)						
Highway Bias Belted Ply Blackwall						
Front						
With 6-cylinder engine	6.00	4 0	XLB	0.58	22.00	22.58
With V8 engine (Standard)	6.00	0 0	XLB			<i>NO ADDITIONAL CHARGE</i>
Rear						
With 6-cylinder engine	6.00	0 4	YLB	0.58	22.00	22.58
With V8 engine (Standard)	6.00	0 0	YLB			<i>NO ADDITIONAL CHARGE</i>
Spare						
With 6-cylinder engine	8.00	-1 3	ZLB	0.29	11.00	11.29
With V8 engine (Standard)	6.00	0 0	ZLB			<i>NO ADDITIONAL CHARGE</i>
Highway Bias Belted Ply White Stripe						
Front						
With 6-cylinder engine	8.00	5 0	XLD	0.58	40.40	40.98
With V8 engine	6.00	5 0	XLD	N.C.	18.40	18.40
Rear						
With 6-cylinder engine	6.00	0 5	YLD	0.58	40.40	40.98
With V8 engine	6.00	0 5	YLD	N.C.	18.40	18.40
Spare						
With 6-cylinder engine	6.00	-1 4	ZLD	0.29	20.20	20.49
With V8 engine	6.00	-1 4	ZLD	N.C.	9.20	9.20
On-Off Road Bias Belted Ply Blackwall						
Rear						
With 6-cylinder engine	6.00	0 8	YLC	0.58	30.00	30.58
With V8 engine	6.00	0 8	YLC	N.C.	8.00	8.00
Spare						
With 6-cylinder engine	6.00	-1 5	ZLC	0.29	15.00	15.29
With V8 engine	6.00	-1 5	ZLC	N.C.	4.00	4.00

[§] D&H amounts reflect provision for pass through of tire weight tax imposed on manufacturer or importer of tires.
[◇] State and local taxes not included.

SUBURBAN

FACTORY INSTALLED TIRES

See Tire Chart for Available Front/Rear Combinations.
Spare tire available to match either front or rear tires.
Prices shown are effective with vehicles manufactured on or after December 23, 1975

Tire Size Type	Rim Width Included In Tire Option	Added Weight (F) (R)	Option Number	Factory D&H's	List Price	Mfr's Suggested Retail Price ◇
----------------	-----------------------------------	----------------------	---------------	---------------	------------	--------------------------------

C10 SERIES TUBELESS TIRES USED WITH SINGLE REAR WHEELS

L78-15 /D Passenger Type. Maximum Tire Capacity (Each)— Front (1900) Rear (1900)

Highway Bias Belted Ply Blackwall

Front						
With 6-cylinder engine	6.00	10 0	XLK	1.26	42.00	43.26
With V8 engine	6.00	10 0	XLK	0.68	20.00	20.68
Rear						
With 6-cylinder engine	6.00	0 10	YLK	1.26	42.00	43.26
With V8 engine	6.00	0 10	YLK	0.68	20.00	20.68
Spare						
With 6-cylinder engine	6.00	-1 6	ZLK	0.63	21.00	21.63
With V8 engine	6.00	-1 6	ZLK	0.34	10.00	10.34

Highway Bias Belted Ply White Stripe

Front						
With 6-cylinder engine	6.00	11 0	XLL	1.26	60.40	61.66
With V8 engine	6.00	11 0	XLL	0.68	38.40	39.08
Rear						
With 6-cylinder engine	6.00	0 11	YLL	1.26	60.40	61.66
With V8 engine	6.00	0 11	YLL	0.68	38.40	39.08
Spare						
With 6-cylinder engine	6.00	-1 7	ZLL	0.63	30.20	30.83
With V8 engine	6.00	-1 7	ZLL	0.34	19.20	19.54

LR78-15 /C Passenger Type. Maximum tire capacity (Each)— Front (1900) Rear (1900)

Highway Steel Belted Radial Ply White Stripe

Front						
With 6-cylinder engine	6.00	9 0	XCD	1.20	96.40	97.60
With V8 engine	6.00	9 0	XCD	0.62	74.40	75.02
Rear						
With 6-cylinder engine	6.00	0 9	YCD	1.20	96.40	97.60
With V8 engine	6.00	0 9	YCD	0.62	74.40	75.02
Spare						
With 6-cylinder engine	6.00	-1 6	ZCD	0.60	48.20	48.80
With V8 engine	6.00	-1 6	ZCD	0.31	37.20	37.51

§ D&H amounts reflect provision for pass through of tire weight tax imposed on manufacturer or importer of tires.
◇ State and local taxes not included.

SUBURBAN

FACTORY INSTALLED TIRES

See Tire Chart for Available Front/Rear Combinations.
Spare tire available to match either front or rear tires.

Prices shown are effective with vehicles manufactured on or after December 23, 1975

Tire Size Type	Rim Width Included in Tire Option	Added Weight (F) (R)	Option Number	Factory D&H [§]	List Price	Mfr's Suggested Retail Price [◇]
C10 SERIES						
TUBE-TYPE TIRES USED WITH SINGLE REAR WHEELS						
6.50-16 /C (6 PR) Truck Type. Maximum Tire Capacity (Each)— Front (1610) Rear (1610)						
<i>WITH 6-CYLINDER ENGINE ONLY</i>						
Highway Nylon Blackwall						
Front.....	5.00	4 0	XMG	(-0.12)	18.00	17.88
Rear.....	5.00	0 4	YMG	(-0.12)	18.00	17.88
Spare.....	5.00	-1 3	ZMG	(-0.60)	9.00	8.94
7.00-15 /C (6 PR) Truck Type. Maximum Tire Capacity (Each)— Front (1720) Rear (1720)						
Highway Nylon Blackwall						
Front						
With 6-cylinder engine.....	6.00	8 0	XNH	0.46	32.00	32.46
With V8 engine.....	6.00	8 0	XNH	(-0.12)	10.00	9.88
Rear						
With 6-cylinder engine.....	6.00	0 8	YNH	0.46	32.00	32.46
With V8 engine.....	6.00	0 8	YNH	(-0.12)	10.00	9.88
Spare						
With 6-cylinder engine.....	6.00	-1 5	ZNH	0.23	16.00	16.23
With V8 engine.....	6.00	-1 5	ZNH	(-0.60)	5.00	4.94
7.00-16 /C (6 PR) Truck Type. Maximum Tire Capacity (Each)— Front (1800) Rear (1800)						
Highway Nylon Blackwall						
Front						
With 6-cylinder engine.....	5.00	37 0	XNK	0.68	38.00	38.68
With V8 engine.....	5.00	37 0	XNK	0.10	16.00	16.10
Rear						
With 6-cylinder engine.....	5.00	0 37	YNK	0.68	38.00	38.68
With V8 engine.....	5.00	0 37	YNK	0.10	16.00	16.10
Spare						
With 6-cylinder engine.....	5.00	-4 23	ZNK	0.34	19.00	19.34
With V8 engine.....	5.00	-4 23	ZNK	0.50	8.00	8.05
On-Off Road Nylon Blackwall						
Rear						
With 6-cylinder engine.....	5.00	0 49	YNL	1.44	62.00	63.44
With V8 engine.....	5.00	0 49	YNL	0.86	40.00	40.86
Spare						
With 6-cylinder engine.....	5.00	-6 31	ZNL	0.72	31.00	31.72
With V8 engine.....	5.00	-6 31	ZNL	0.43	20.00	20.43

[§] D&H amounts reflect provision for pass through of tire weight tax imposed on manufacturer or importer of tires.
[◇] State and local taxes not included.

SUBURBAN

FACTORY INSTALLED TIRES

See Tire Chart for Available Front/Rear Combinations.
Spare tire available to match either front or rear tires.
Prices shown are effective with vehicles manufactured on or after December 23, 1975

Tire Size Type	Rim Width Included In Tire Option	Added Weight (F) (R)	Option Number	Factory D&H [§]	List Price	Mfr's Suggested Retail Price [◇]
----------------	-----------------------------------	----------------------	---------------	--------------------------	------------	---

K10 SERIES TUBELESS TIRES USED WITH SINGLE REAR WHEELS

H78-15 /B Passenger Type. Maximum Tire Capacity (Each)— Front (1610) Rear (1610)

Highway Bias Belted Ply Blackwall						
Front (Standard)	6.00	0 0	XHL		NO ADDITIONAL CHARGE	
Rear (Standard)	6.00	0 0	YHL		NO ADDITIONAL CHARGE	
Spare (Standard)	6.00	0 0	ZHL		NO ADDITIONAL CHARGE	
Highway Bias Belted Ply White Stripe						
Front	6.00	0 0	XHM	N.C.	16.00	16.00
Rear	6.00	0 0	YHM	N.C.	16.00	16.00
Spare	6.00	0 0	ZHM	N.C.	8.00	8.00
On-Off Road Bias Belted Ply Blackwall						
Front	6.00	5 0	XHR	N.C.	8.00	8.00
Rear	6.00	0 5	YHR	N.C.	8.00	8.00
Spare	6.00	-1 4	ZHR	N.C.	4.00	4.00

L78-15 /B Passenger Type. Maximum Tire Capacity (Each)— Front (1790) Rear (1790)

Highway Bias Belted Ply Blackwall						
Front	6.00	4 0	XLB	0.58	22.00	22.58
Rear	6.00	0 4	YLB	0.58	22.00	22.58
Spare	6.00	-1 3	ZLB	0.29	11.00	11.29
Highway Bias Belted Ply White Stripe						
Front	6.00	5 0	XLD	0.58	40.40	40.98
Rear	6.00	0 5	YLD	0.58	40.40	40.98
Spare	6.00	-1 4	ZLD	0.29	20.20	20.49
On-Off Road Bias Belted Ply Blackwall						
Front	6.00	8 0	XLC	0.58	30.00	30.58
Rear	6.00	0 8	YLC	0.58	30.00	30.58
Spare	6.00	-1 5	ZLC	0.29	15.00	15.29

L78-15 /D Passenger Type. Maximum Tire Capacity (Each)— Front (2030) Rear (2030)

Highway Bias Belted Ply Blackwall						
Front	6.00	10 0	XLK	1.26	42.00	43.26
Rear	6.00	0 10	YLK	1.26	42.00	43.26
Spare	6.00	-1 6	ZLK	0.63	21.00	21.63
Highway Bias Belted Ply White Stripe						
Front	6.00	11 0	XLL	1.26	60.40	61.66
Rear	6.00	0 11	YLL	1.26	60.40	61.66
Spare	6.00	-1 7	ZLL	0.63	30.20	30.83

LR78-15 /C Passenger Type. Maximum tire capacity (Each)— Front (1910) Rear (1910)

Highway Steel Belted Radial Ply White Stripe						
Front	6.00	9 0	XCD	1.20	98.40	97.60
Rear	6.00	0 9	YCD	1.20	98.40	97.60
Spare	6.00	-1 6	ZCD	0.60	48.20	48.80

K10 SERIES WIDE BASE TUBELESS TYPE TIRES USED WITH SINGLE REAR TIRES

10-15 /B (4 PR) Truck Type. Maximum Tire Capacity (Each)— Front (1760) Rear (1760)

Highway Polyester Bias Belted Ply Blackwall						
Front	8.00	29 0	XWR	2.54	118.00	120.54
Rear	8.00	0 29	YWR	2.54	118.00	120.54
Spare	8.00	-4 19	ZWR	1.27	59.00	60.27

[§] D&H amounts reflect provision for pass through of tire weight tax imposed on manufacturer or importer of tires.
[◇] State and local taxes not included.

SUBURBAN

FACTORY INSTALLED TIRES

See Tire Chart for Available Front/Rear Combinations.
Spare tire available to match either front or rear tires.

Prices shown are effective with vehicles manufactured on or after December 23, 1975

Tire Size Type	Rim Width Included In Tire Option	Added Weight (F) (R)	Option Number	Factory D&H [†]	List Price	Mfr's Suggested Retail Price [◇]
K10 SERIES						
TUBE-TYPE TIRES USED WITH SINGLE REAR WHEELS						
6.50-16 /C (6 PR) Truck Type. Maximum Tire Capacity (Each)— Front (1610) Rear (1610)						
Highway Nylon Blackwall						
Front	5.00	4 0	XMG	(-0.12)	18.00	17.88
Rear	5.00	0 4	YMG	(-0.12)	18.00	17.88
Spare	5.00	-1 3	ZMG	(-0.60)	9.00	8.94
7.00-15 /C (6 PR) Truck Type. Maximum Tire Capacity (Each)— Front (1720) Rear (1720)						
Highway Nylon Blackwall						
Front	6.00	8 0	XNH	0.46	32.00	32.46
Rear	6.00	0 8	YNH	0.46	32.00	32.46
Spare	6.00	-1 5	ZNH	0.23	16.00	16.23
7.00-16 /C (6 PR) Truck Type. Maximum Tire Capacity (Each)— Front (1800) Rear (1800)						
Highway Nylon Blackwall						
Front	5.00	37 0	XNK	0.68	38.00	38.68
Rear	5.00	0 37	YNK	0.68	38.00	38.68
Spare	5.00	-4 23	ZNK	0.34	19.00	19.34
On-Off Road Nylon Blackwall						
Front	5.00	49 0	XNL	1.44	62.00	63.44
Rear	5.00	0 49	YNL	1.44	62.00	63.44
Spare	5.00	-6 31	ZNL	0.72	31.00	31.72
C-K20 SERIES						
WIDE BASE TUBELESS TIRES USED WITH SINGLE REAR WHEELS						
8.75-16.5 /C (6 PR) Maximum Tire Capacity (Each)— Front (1990) Rear (1990)						
Highway Nylon						
Front (Standard)	6.00	0 0	XTC	<i>NO ADDITIONAL CHARGE</i>		
Rear (Standard)	6.00	0 0	YTC	<i>NO ADDITIONAL CHARGE</i>		
Spare	6.00	-10 46	ZTC	3.74	80.00	83.74
On-Off Road Nylon						
Front. K20 series only	6.00	1 0	XTB	0.32	24.00	24.32
Rear	6.00	0 1	YTB	0.32	24.00	24.32
Spare	6.00	-10 47	ZTB	3.90	92.00	95.90
8.75-16.5 /D (8 PR) Maximum Tire Capacity (Each)— Front (2350) Rear (2350)						
Highway Nylon Blackwall						
Front	6.00	8 0	XTE	0.44	18.00	18.44
Rear	6.00	0 8	YTE	0.44	18.00	18.44
Spare	6.00	-11 51	ZTE	3.96	88.00	92.96
On-Off Road Nylon Blackwall						
Front. K20 series only	6.00	5 0	XTF	0.92	42.00	42.92
Rear	6.00	0 5	YTF	0.92	42.00	42.92
Spare	6.00	-11 50	ZTF	4.20	101.00	105.20
9.50-16.5 /D (8 PR) Maximum Tire Capacity (Each)— Front (2780) Rear (2780)						
Highway Nylon						
Front	6.75	33 0	XUD	1.42	50.00	51.42
Rear	6.75	0 33	YUD	1.42	52.00	53.42
Spare	6.75	-13 66	ZUD	4.45	103.00	107.45
On-Off Road Nylon						
Front. K20 series only	6.75	38 0	XUE	1.92	76.00	77.92
Rear	6.75	0 38	YUE	1.92	78.00	79.92
Spare	6.75	-14 70	ZUE	4.70	116.00	120.70

[†] D&H amounts reflect provision for pass through of tire weight tax imposed on manufacturer or importer of tires.
[◇] State and local taxes not included.

SUBURBAN

FACTORY INSTALLED TIRES

See Tire Chart for Available Front/Rear Combinations.

Spare tire available to match either front or rear tires.

Prices shown are effective with vehicles manufactured on or after December 23, 1975

Tire Size Type	Rim Width Included in Tire Option	Added Weight (F) (R)	Option Number	Factory D&H	List Price	Mfr's Suggested Retail Price◇
----------------	-----------------------------------	----------------------	---------------	-------------	------------	-------------------------------

K20 SERIES

TUBELESS FLOTATION TYPE TIRES USED WITH SINGLE REAR WHEELS

10-16.5 /D (8 PR) Maximum Tire Capacity (Each)— Front (2750) Rear (2750)

On-Off Road Nylon

Front	8.25	40	0	XWF	2.16	156.00	158.16
Rear	8.25	0	40	YWF	2.16	181.00	183.16
Spare	8.25	-15	71	ZWF	4.82	133.00	137.82

C-K20 SERIES

TUBE-TYPE TIRES USED WITH SINGLE REAR WHEELS

7.50-16 /C (6 PR) Maximum Tire Capacity (Each)— Front (2060) Rear (2060)

Highway Nylon

Front	6.00	28	0	XPB	(-0.16)	16.00	15.84
Rear	6.00	0	28	YPB	(-0.16)	24.00	23.84
Spare	6.00	-12	63	ZPB	3.66	80.00	83.66

On-Off Road Nylon

Front. K20 series only	6.00	46	0	XPC	0.28	44.00	44.28
Rear	6.00	0	46	YPC	0.28	52.00	52.28
Spare	6.00	-15	75	ZPC	3.88	94.00	97.88

7.50-16 /D (8 PR) Maximum Tire Capacity (Each)— Front (2440) Rear (2440)

Highway Nylon

Front	6.00	29	0	XPF	0.48	34.00	34.48
Rear	6.00	0	29	YPF	0.48	42.00	42.48
Spare	6.00	-12	63	ZPF	3.98	89.00	92.98

On-Off Road Nylon

Front. K20 series only	6.00	46	0	XPG	1.24	66.00	67.24
Rear	6.00	0	46	YPG	1.24	74.00	75.24
Spare	6.00	-15	75	ZPG	4.38	105.00	109.36

7.50-16 /E (10 PR) Maximum Tire Capacity (Each)— Front (2780) Rear (2780)

Highway Nylon

Front	6.00	28	0	XPK	1.32	52.00	53.32
Rear	6.00	0	28	YPK	1.32	60.00	61.32
Spare	6.00	-12	63	ZPK	4.40	98.00	102.40

On-Off Road Nylon

Front. K20 series only	6.00	38	0	XPL	2.46	88.00	90.46
Rear	6.00	0	38	YPL	2.46	96.00	98.46
Spare	6.00	-14	71	ZPL	4.97	116.00	120.97

§ D&H amounts reflect provision for pass through of tire weight tax imposed on manufacturer or importer of tires.
 ◇ State and local taxes not included.