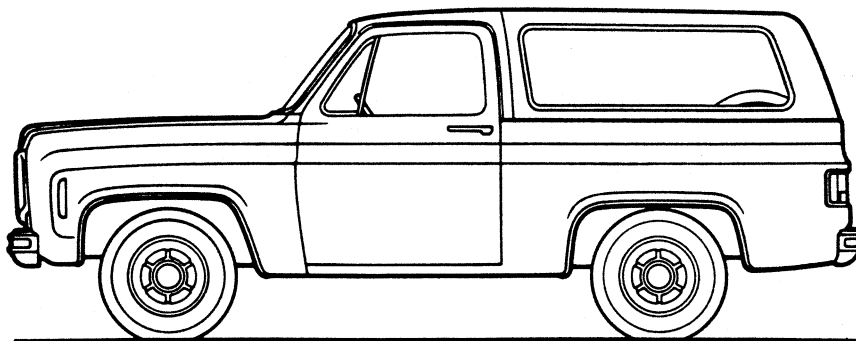
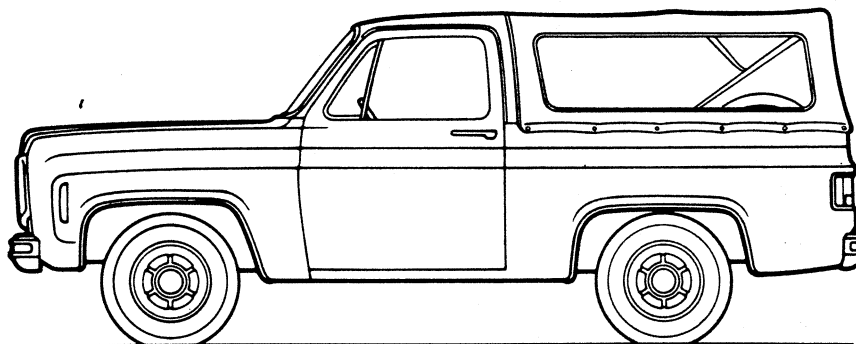


**BLAZER MODEL SELECTOR**



**HARDTOP**

SERIES	MODEL NUMBER	BODY ORDERING CODE	
		White Top	Black Top
<b>C10</b>	CC10516	Z58	Z59
<b>K10</b> (4-Wheel Drive)	CK10516	Z58	Z59



**CONVERTIBLE TOP**

SERIES	MODEL NUMBER	BODY ORDERING CODE			
		White Top	Black Top	Blue Top	Buckskin Top
<b>C10</b>	CC10516	C1A	C1B	C1C	C1D
<b>K10</b> (4-Wheel Drive)	CK10516	C1A	C1B	C1C	C1D

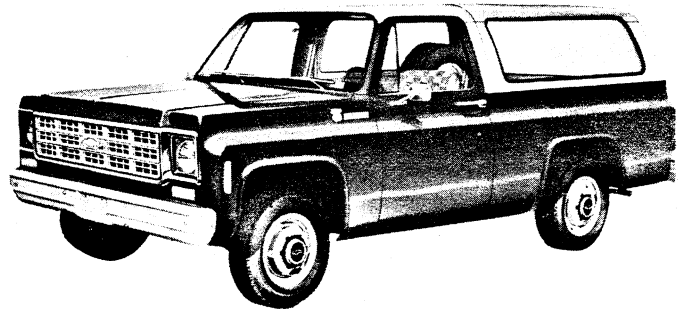
# BLAZER

## CUSTOM DELUXE FEATURES—STANDARD MODEL

The Custom Deluxe standard models include the following items as standard equipment

### EXTERIOR

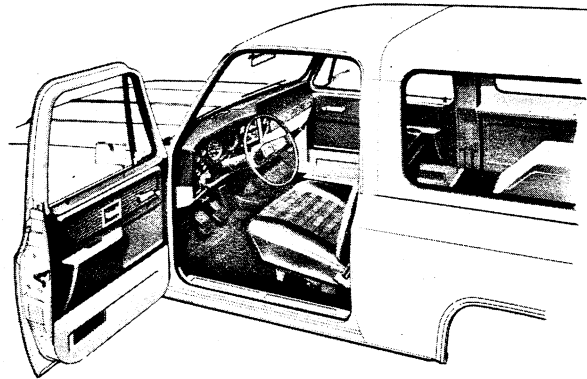
- **Bumpers:** Front and rear; painted white
- **Color:** See Interior and Exterior Color Selection Chart
- **Doors:** RH and LH side doors
- **Drip Moldings:** Over side doors; painted roof color
- **Grille:** Molded plastic; painted silver; integral Chevrolet emblem at center includes bright insert with black and ochre trim
- **Grille Frame:** Bright upper and lower moldings joining extensions of bright headlamp bezels; gray metallic-painted bezel centers
- **Horn:** Single, electric low-note
- **Hub Caps:** Painted white with black and ochre trim (2-wheel-drive models only)
- **Keys:** Two-key system with separate keys for ignition switch and doors
- **Lights:**
  - Backup lamps: Two rear (integral with taillamps)
  - Combination parking/direction/hazard: Two front
  - Combination tail/stop/direction/hazard: Two rear
  - Headlamps: Two; Power Beam
  - License plate lamp: Single rear
  - Side marker lamps with reflectors: Two front (wraparound taillamps serve as rear side marker lamps and reflectors)
- **Mirrors:** RH and LH fixed arm with adjustable 5½" x 4" head; chrome finish
- **Nameplates:** Bright "K5 Blazer" nameplates on upper portions of front fenders near doors; and a bright "Chevrolet" nameplate on tailgate (except convertible models).
- **Removable Top:** (Hardtop models only) Constructed of molded plastic reinforced with fiber glass. Included are LH and RH fixed side windows. The exterior of the top is finished with textured black or white paint (cab roof also finished in same manner).



- **Convertible Top:** (Convertible models only) Made with vinyl-coated fabric, which is stain- and mildew-resistant, and sewn with long-lasting nylon thread. Top has a structural foam header where it seals with the cab roof panel. It can be used with the side and rear panels rolled up or entire top can be folded down. Steel hardware with aluminum extrusions for the siderails.
- **Tailgate:** Hardtop models: double-wall steel construction, supported in open position by reel-type cables. Includes drop glass operated by an articulated crank-type regulator handle on the tailgate outer panel. A key lock cylinder is concealed in the regulator handle, and must be unlocked before the window can be lowered. After the window is lowered, the tailgate is released with a handle located at the upper center of the inner panel. Convertible models: same tailgate as that used on Fleetside pickups.
- **Tools:** Mechanical jack and wheel wrench
- **Wheels:** Painted white
- **Windshield Wipers and Washers:** Electric, 2-speed wipers with matte finish on exposed metal portions; partially concealed arms; coordinated dual-orifice washers

### INTERIOR

- **Armrests:** RH and LH padded; integral with door trim panels
- **Ashtray:** In middle of instrument panel
- **Coat Hooks:** Two; on LH side (Hardtop models only)
- **Colors:**
  - Painted body areas: Same as exterior primary color choice
  - Removable top: Light fawn
  - Interior trim: Coordinated with seat trim color choice
- **Dome Lamps:** Two (Hardtop models only); one (convertible models only); with door-actuated switches (dome lamps may also be activated by main light switch)
- **Door Trim Panels:** Color-keyed, molded plastic
- **Floor Covering:** Embossed black rubber mats; front and rear
- **Heater and Defogger:** Deluxe-air; automatic blower operation with ignition switch on for power ventilation system
- **Instruments:**
  - Gauges: Speedometer, odometer, and fuel
  - Switches: Main, for control of exterior lights, instrument cluster lights, dome light(s) and courtesy/map light; wiper-washer; headlamp beam (foot); ignition; direction signal (with lane change position); hazard warning; heater fan
  - Warning lights: Generator, oil pressure, engine temperature, brake, direction/hazard signal, seat belt and high beam
- **Instrument Panel Control Knobs:** Soft black plastic with white graphic identification (except heater and wiper-washer controls)
- **Instrument Panel Pad:** Color-keyed, energy-absorbing foam type with grained vinyl skin; has simulated wood-grained applique on RH side with bright trim and bright "Custom Deluxe" nameplate
- **Insulation and Sound Deadening Material:** Dash (firewall), under front floor mat, and between inner and outer cab roof panels.
- **Lights:** Instrument cluster and courtesy/map lights, cab and removable top dome lights with bright trim
- **Mirror, Rearview:** 10" prismatic with soft vinyl rim



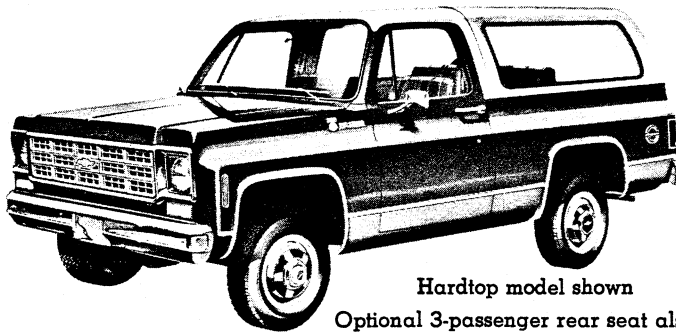
- **Scuff Plates:** Full-length, bright front door and rear compartment sills
- **Seat:** Driver only; foam-padded bucket type with plaid pattern vinyl trim. See Interior and Exterior Color Selection Chart for color availability
- **Seat Belt:** Driver's seat only; non-detachable combination lap and shoulder belt with automatic-locking retractor on lap belt, emergency-locking retractor on shoulder belt, and switch in lap belt retractor for buzzer warning system. Belt assembly is color-keyed with pushbutton type buckle.
- **Spare Tire Mounting:** On RH side panel behind wheelhouse
- **Steering Wheel and Column:** 17½" black wheel with 2-spoke design; black energy-absorbing steering column
- **Storage Box:** In RH side of instrument panel; door has bright, turn-type latch release
- **Sunshade:** LH and RH padded; color-keyed

# BLAZER

## CHEYENNE MODEL OPTION—RPO Z84

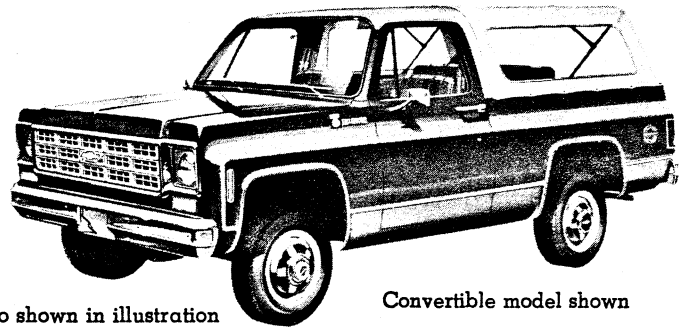
This option includes all Custom Deluxe standard model items plus the additions or substitutions listed below

### EXTERIOR



Hardtop model shown

Optional 3-passenger rear seat also shown in illustration



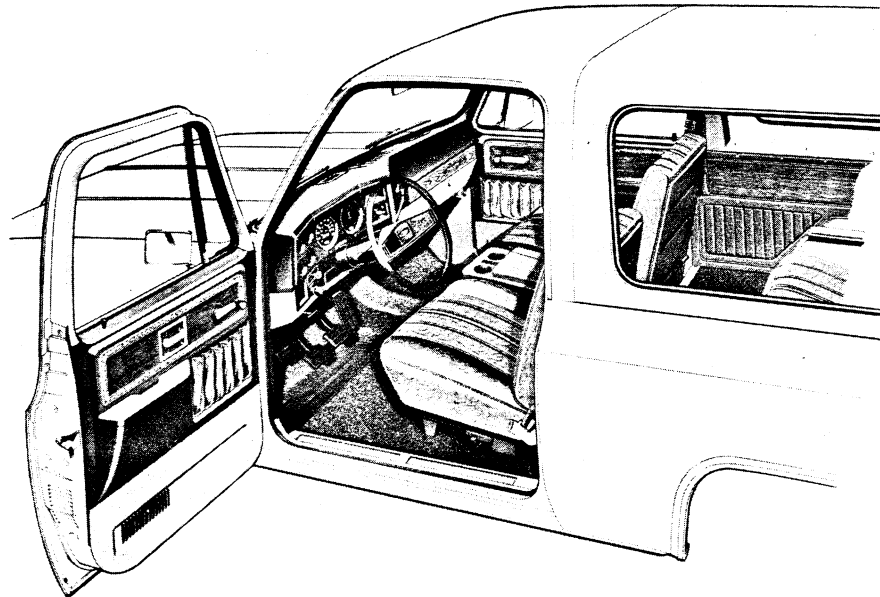
Convertible model shown

#### ● Bright Appearance Items:

- Brush-finished applique panel on tailgate
- Front and rear bumpers
- Hub caps
- "Cheyenne" nameplate on each side panel at center rear
- Upper and lower body side and tailgate moldings, plus wheel-opening lip moldings

- Parking lamp, front side marker lamp, and taillamp trim
- Removable top side window moldings
- Windshield reveal molding
- **Body-to-Fender Insulators**
- **Hood Insulator**
- **Horn:** Additional, electric, high-note

Optional 3-passenger rear seat shown in illustration



Hardtop model shown

### INTERIOR

#### ● Bright Appearance Items:

- "Cheyenne" nameplate on instrument panel pad
- Four-speed transmission shift lever
- Transfer case shift lever (conventional 4-wheel-drive models)
- Trim on instrument cluster face plate and on interior trim panels
- **Cigar Lighter**
- **Console:** Color-keyed molded plastic with bright trim and storage/beverage pockets
- **Floor Covering:** Color-keyed front compartment carpeting. Matching rear compartment floor covering provided only with optional rear seat
- **Headliner:** Front compartment; light fawn hardboard-backed foam rubber; includes matching windshield pillar and retainer moldings

- **Instrument Cluster:** Voltmeter, oil pressure gauge, and engine temperature gauge replace warning lamps; includes wood-grain trimmed face plate
- **Seats:** Bucket seats for driver and front passenger; includes non-detachable combination lap and shoulder belt for passenger seat with automatic locking retractor on lap belt and emergency locking retractor on shoulder belt; choice of: 1) all-vinyl buffalo hide grain trim; or 2) plaid pattern nylon cloth and vinyl trim. See Interior and Exterior Color Selection Chart for color availability
- **Spare Tire Cover:** Black vinyl
- **Special Insulator:** Under cowl top panel
- **Trim Panels:** Molded, color-keyed plastic front door trim panels with vinyl storage pockets, woodgrain inserts and bright trim. Color-keyed embossed vinyl rear compartment sidewall trim panels with woodgrain inserts and bright trim

August 9, 1976

Blazer—Page 3

# BLAZER

## OPTIONAL SEATS

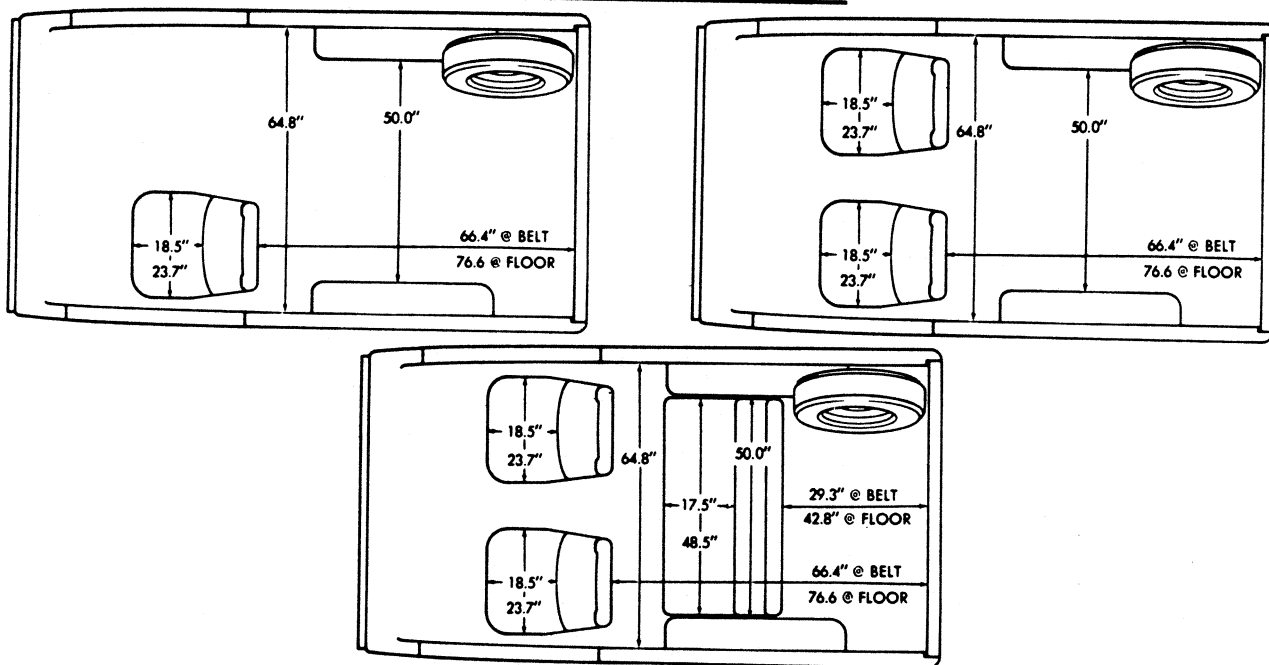
A bucket-type auxiliary front seat (RPO A57) is available for Custom Deluxe (standard) models. This seat includes a seat belt with retractor and is trimmed to match the standard driver's seat.

The driver's seat together with the auxiliary front seat is available optionally for Custom Deluxe (standard) models with all-vinyl buffalo hide grain trim in a choice of blue, buckskin, mandarin orange, or red. This option includes a color-keyed plastic floor console between the seats, color-keyed front carpeting and seat belt with retractor for the auxiliary seat. These seats are included when the Cheyenne Model Option (Z84) is ordered. Plaid pattern cloth seats in blue or

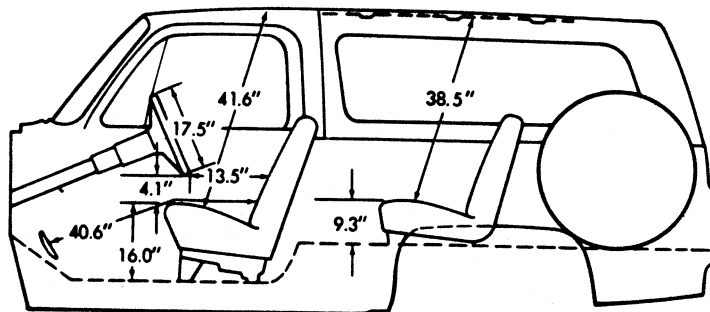
buckskin and buffalo hide grain all-vinyl seats in blue, buckskin, mandarin orange or red are also available with Cheyenne trim.

A three-passenger rear seat (RPO AS3) is available for all models and may be ordered with or without the auxiliary front seat (RPO A57). Seat belts without retractors and LH and RH ashtrays and armrests are included; carpeting is also included when the buffalo hide grain all-vinyl seats are ordered with Custom Deluxe (standard) models, or when the Cheyenne Model Option is ordered. The seat is trimmed to match the driver's seat.

### SEATING ARRANGEMENTS



### DIMENSIONS



### Glass Area (sq. in.)

Windshield.....1447  
 Side door, including venti-  
 pane (each side)..... 546

Removable top side win-  
 dow (each side)..... 894  
 Tailgate drop glass (Hard  
 top models).....1077

# BLAZER HARDTOP

## INTERIOR AND EXTERIOR COLOR AVAILABILITY CHART

**Please Note:** Exterior and interior combinations shown in chart below are those recommended by Chevrolet; however, any exterior color combination may be ordered with any available interior color if the particular combination is desired by a customer.

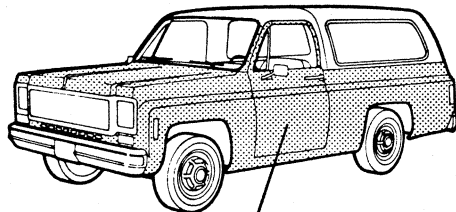
SEAT TRIM			MODEL OPTION		COLORS AND ORDERING CODES					
Fabric	▲Code	Type	Custom Deluxe	Cheyenne Z84	SEAT TRIM				HARDTOPS■	
					Blue	Buckskin	Mandarin Orange	Red	White	Black
Standard Vinyl	V	Bucket	X		VDD2	VUU2	VMM2	VRR2	258	259
Custom Vinyl	W	Bucket	X	X	XDD2	XUU2	XMM2	XRR2		
Custom Cloth	H	Bucket		X	KDD2	KUU2				
♦ EXTERIOR COLORS			Primary	Secondary	RECOMMENDED INTERIOR TRIM COLORS					
<b>BLACK MIDNIGHT</b>			86	86	X	X	X	X	X	X
White Frost			86	12	X	X	X	X	X	X
<b>BLUE, LITE (Light)</b>			20	20	X				X	X
White, Frost			20	12	X				X	
<b>BLUE, HAWAIIAN (Medium)</b>			23	23	X				X	X
White, Frost			23	12	X				X	
<b>BLUE, MARINER (Dark) (M)</b>			25	25	X				X	X
White, Frost			25	12	X				X	
<b>BROWN, CORDOVA (Dark) (M)</b>			81	81		X	X		X	X
White, Frost			81	12		X	X		X	
<b>BUCKSKIN</b>			65	65		X	X	X	X	X
White, Frost			65	12		X	X	X	X	
<b>GREEN, SEAMIST (Light) (M)</b>			43	43		X			X	X
White, Frost			43	12		X			X	
<b>MAHOGANY</b>			76	76		X		X	X	X
White, Frost			76	12		X		X	X	
<b>RED, CARDINAL (Medium)</b>			70	70		X●		X	X	X
White, Frost			70	12		X●		X	X	
<b>RED, METALLIC (Dark) (M)</b>			71	71		X		X	X	X
White, Frost			71	12		X		X	X	
<b>RUSSET METALLIC (M)</b>			68	68		X	X		X	X
White, Frost			68	12		X	X		X	
<b>SILVER, SARATOGA (M)</b>			17	17	X			X	X	X
White, Frost			17	12	X			X	X	
<b>TAN, SANTA FE</b>			60	60		X	X	X	X	X
White, Frost			60	12		X	X	X	X	
<b>WHITE, FROST</b>			12	12	X	X	X	X	X	X
<b>YELLOW, COLONIAL</b>			53	53		X			X	X
White, Frost			53	12		X			X	

♦ Primary color shown in **BOLDFACE TYPE**; Secondary colors shown in Lightface Type. Two-tone paint not available with black top except when Midnight Black primary paint is ordered. ● Not recommended with code H trim.

▲ Seat Trim Codes: V—Plaid Pattern Vinyl; W—Buffalo Hide Vinyl; H—Plaid Pattern Cloth (M): Metallic

■ Cab roof painted with white textured paint when white top is ordered; with black textured paint when black top is ordered.

### SOLID PAINT—ZY1

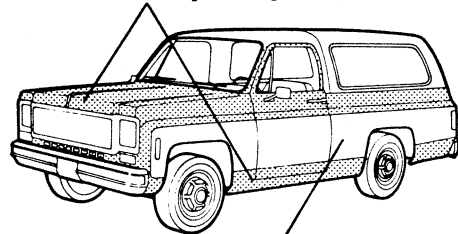


Primary Body Color

### SPECIAL TWO-TONE—ZY3

(Includes YG1 Moldings)

Primary Body Color



Secondary Body Color  
(Secondary Color is Frost White)

SEE PAGE 7 FOR ZY5 EXTERIOR DECOR PACKAGE ILLUSTRATION

# BLAZER CONVERTIBLE

## INTERIOR AND EXTERIOR COLOR AVAILABILITY CHART

Please Note: Exterior and interior combinations shown in chart below are those recommended by Chevrolet; however, any exterior color combination may be ordered with any available interior color if the particular combination is desired by a customer.

SEAT TRIM			MODEL OPTION		COLORS AND ORDERING CODES							
					SEAT TRIM				CONVERTIBLE TOPS ■			
Fabric	▲Code	Type	Custom Deluxe	Cheyenne Z84	Blue	Buckskin	Mandarin Orange	Red	White	Black	Blue	Buckskin
Standard Vinyl	V	Bucket	X		VDD2	VUU2	VMM2	VRR2	C1A	C1B	C1C	C1D
Custom Vinyl	W	Bucket	X	X	XDD2	XUU2	XMM2	XRR2				
Custom Cloth	H	Bucket		X	KDD2	KUU2						
♦ EXTERIOR COLORS			Primary	Secondary	RECOMMENDED INTERIOR TRIM COLORS							
<b>BLACK MIDNIGHT</b>			86	86	X	X	X	X	X	X	Xa	Xb
White, Frost			86	12	X	X	X	X	X	X		
<b>BLUE, LITE (Light)</b>			20	20	X				X	X	X	
White, Frost			20	12	X				X			
<b>BLUE, HAWAIIAN (Medium)</b>			23	23	X				X	X	X	
White, Frost			23	12	X				X		X	
<b>BLUE, MARINER (Dark) (M)</b>			25	25	X				X	X	X	
White, Frost			25	12	X				X		X	
<b>BROWN, CORDOVA (Dark) (M)</b>			81	81		X	X		X	X		X
White, Frost			81	12		X	X		X			
<b>BUCKSKIN</b>			65	65		X	X	X	X	X		X
White, Frost			65	12		X	X	X	X			X
<b>GREEN, SEAMIST (Light) (M)</b>			43	43		X			X	X		
White, Frost			43	12		X			X			
<b>MAHOGANY</b>			76	76		X		X	X	X		X
White, Frost			76	12		X		X	X			
<b>RED, CARDINAL (Medium)</b>			70	70		X●		X	X	X		
White, Frost			70	12		X●		X	X			
<b>RED, (Dark) (M)</b>			71	71		X		X	X	X		X
White, Frost			71	12		X		X	X			
<b>RUSSET (M)</b>			68	68		X	X		X	X		X
White, Frost			68	12		X	X		X			X
<b>SILVER, SARATOGA (M)</b>			17	17	X			X	X	X	Xa	
White, Frost			17	12	X			X	X			
<b>TAN, SANTA FE</b>			60	60		X	X	X	X	X		X
White, Frost			60	12		X	X	X	X			X
<b>WHITE, FROST</b>			12	12	X	X	X	X	X	X	Xa	Xb
<b>YELLOW, COLONIAL</b>			53	53		X			X	X		X
White, Frost			53	12		X			X			

♦ Primary color shown in **BOLDFACE TYPE**; Secondary colors shown in Lightface Type. Two-tone paint not available with black top except when Midnight Black primary paint is ordered. ● Not recommended with code H trim.

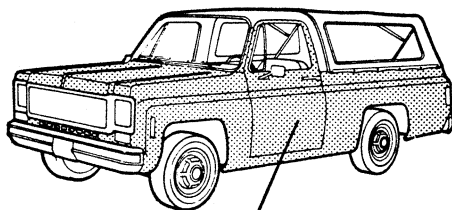
▲ Seat Trim Codes: V—Plaid Pattern Vinyl; W—Buffalo Hide Vinyl; H—Plaid Pattern Cloth (M): Metallic

■ Cab roof painted with white textured paint when white top is ordered; with black textured paint when black top is ordered; and with primary paint color when blue or buckskin tops are ordered.

a Requires blue interior trim.

b Requires buckskin interior trim.

### SOLID PAINT—ZY1

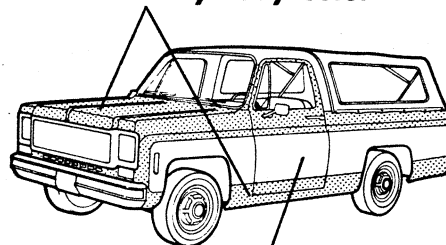


Primary Body Color

### SPECIAL TWO-TONE—ZY3

(Includes YG1 Moldings)

Primary Body Color

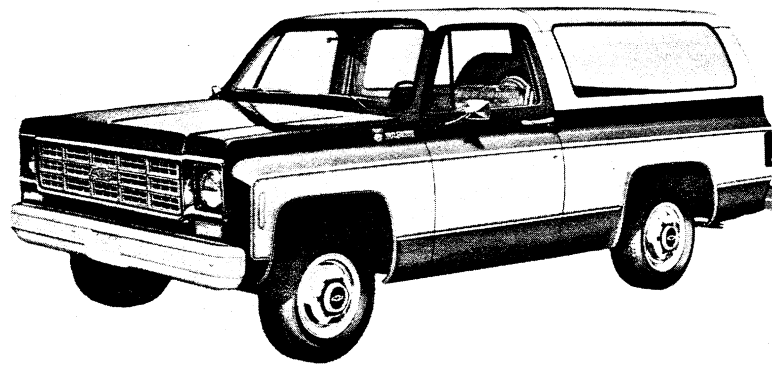


Secondary Body Color  
(Secondary Color is Frost White)

SEE PAGE 7 FOR ZY5 EXTERIOR DECOR PACKAGE ILLUSTRATION

# BLAZER

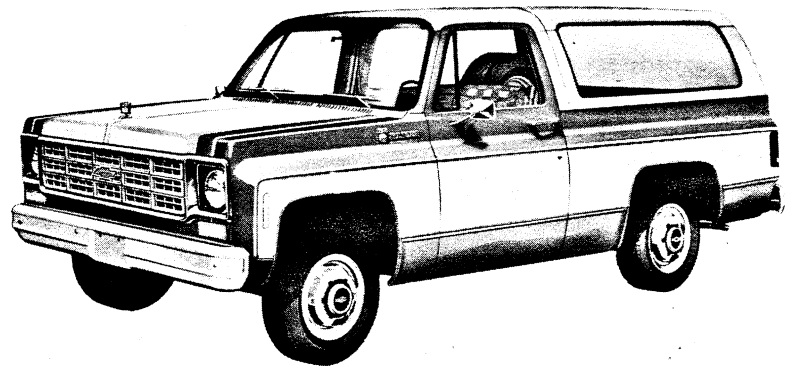
## TWO-TONE EXTERIOR COLOR COMBINATIONS\*



### SPECIAL TWO-TONE

**Special two-tone (ZY3)** paint colors are available on all models with white tops, models with black tops when the primary exterior paint color is Midnight Black, models with blue folding top when the primary exterior paint color is Hawaiian Blue or Mariner Blue, and models with buckskin folding top when the primary exterior paint color is Santa Fe Tan or Buckskin. Custom upper and lower moldings are included (except with the Cheyenne Model Option where they are already included). The areas between the moldings are painted Frost White.

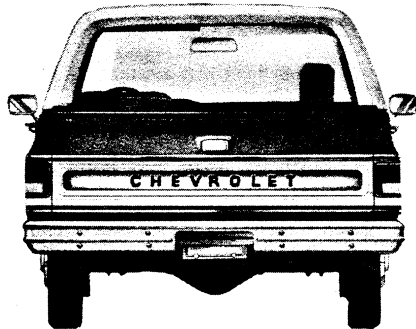
All other painted areas of the vehicle body and front end sheet metal are painted the primary body color, except when the white or black tops are ordered the front cab roof, including the drip rails, is painted with white or black textured paint.



### EXTERIOR DECOR PACKAGE

(Available with White Top only)

**Exterior Decor Package (ZY5)** paint colors and trim are available on models with white tops only. This package includes all the moldings and paint described under Special Two-Tone in a choice of six combinations (see chart below). In addition, it includes the secondary paint color, Frost White, on the hood with color-coordinated striping at either side of the hood panel, plus a bright spring-loaded, stand-up type hood emblem. The inboard hood stripe color matches the primary color, while the outboard stripe is of a contrasting color.



CODE	PRIMARY COLOR	CODE	SECONDARY COLOR	OUTBOARD HOOD STRIPE COLOR
25	Mariner Blue (Dark)	12	Frost White	Dark Blue
43	Seamist Green (Light)	12	Frost White	Medium Green
53	Colonial Yellow	12	Frost White	Gold
70	Cardinal Red (Medium)	12	Frost White	Dark Red
71	Metallic Red (Dark)	12	Frost White	Light Red
81	Cordova Brown (Dark)	12	Frost White	Bronze

# BLAZER

## STANDARD SPECIFICATIONS

(See Blue Tab Section for Specification Details)

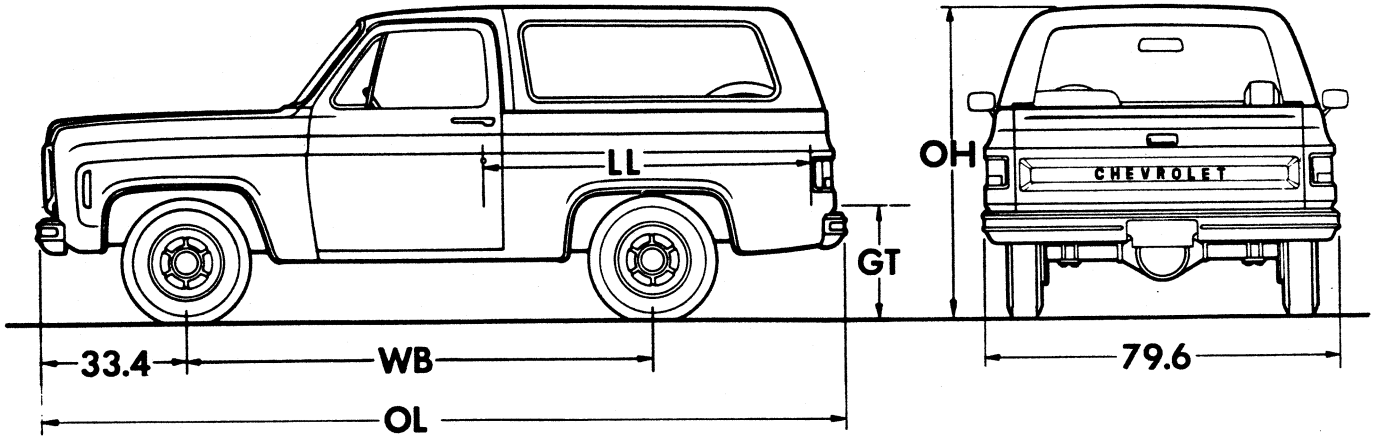
Series	C10	K10
<b>Engine</b>		
<b>Base Equip.</b> .....	250 1-bbl L6	
<b>Clutch</b> .....	11", 124 sq. in.	
<b>Air Filter</b> .....	Oiled-paper Element	
<b>Oil Filter</b> .....	Throwaway Type	
<b>Exhaust System</b> .....	Single; Aluminized	
<b>Emission Control Systems</b> .....	See Engine & Cooling, page 26, for specific model appl.	
<b>Suspension, Front</b> .....	Independent	Hypoid Driving Axle
<b>Type</b> .....	Coil Springs	Leaf Springs
<b>Axle Capacity</b> .....	3250 lb.	3600 lb.
<b>Axle Ratio</b> .....	—	4.11
<b>Springs @ Ground</b> .....	1625 lb. ea.	1650 lb. ea.
<b>Shock Absorbers</b> .....	1" dia.	1" dia.
<b>Stabilizer Bar</b> .....	—	1.25" dia.
<b>Suspension, Rear</b> .....	Salisbury Axle; Hypoid Drive; Two-stage Multi-leaf Springs	
<b>Type</b> .....	Leaf Springs	
<b>Axle Capacity</b> .....	3750 lb.	
<b>Axle Ratio</b> .....	4.11	
<b>Springs, Main @ Ground</b> .....	1700 lb. ea.	
<b>Shock Absorbers</b> .....	1" dia.	
<b>Brakes</b> .....	Hydraulic; Self-adjusting	
<b>Front</b> .....	Disc; 11.86" Rotor	
<b>Rear</b> .....	Drum; 11.15" x 2.75"	
<b>Booster</b> .....	Dual Diaphragm	
<b>Parking</b> .....	Cable to Rear Wheels	
<b>Electrical</b> .....	12 Volt; Negative Ground	
<b>Battery</b> .....	Freedom Type; 2500 watts @ 0°F.	
<b>Delcotron Generator</b> .....	37 amp.	
<b>Frame</b> .....	Carbon Steel; 39,000 psi	
<b>Section Modulus</b> .....	3.14	
<b>Fuel Tank (nominal capacity)</b> .....	25 gal.	
<b>Steering Gear Type</b> .....	Manual; Recirculating Ball Gear	
<b>Linkage</b> .....	Parallelogram	Conventional
<b>Transmission</b> .....	Fully Synchronized 3-Speed	
<b>Shift Location</b> .....	Steering Column	
<b>Transfer Case</b> .....	—	New Process 205 2-Speed
<b>Shift Lever</b> .....	—	Single Lever
<b>PTO Opening</b> .....	—	Left Side
<b>Tires</b> .....	(5) H78-15B (4PR)	
<b>Wheels</b> .....	(5) Disc 15" x 6"	



# BLAZER

## BODY ORDERING CODES:

Hardtop Models: White—Z58; Black—Z59  
 Convertible top Models†: White—C1A; Black—C1B; Blue—C1C; Buckskin—C1D



Series	Ground Clearance (in)★	
	Front	Rear
C10	7.5	7.4
K10	7.0	7.0

Model	Engine No. Cyl.	Dimensions (in) ★					†Curb Weight (lb)			†Model Weight (lb)*		
		WB	LL	OL	OH	GT	Front	Rear	Total	Front	Rear	Total

### C10 SERIES

<b>CC10516</b>	6	106.5	76.6	184.4	69.8	26.4	2028	1912	3940	2095	1995	4090
----------------	---	-------	------	-------	------	------	------	------	------	------	------	------

### K10 SERIES

<b>CK10516</b>	6	106.5	76.6	184.4	72.0	28.7	2216	2075	4291	2283	2158	4441
----------------	---	-------	------	-------	------	------	------	------	------	------	------	------

★Dimensions with standard equipment, unloaded.

\*Model Weight includes Curb Weight plus occupants (standard seating capacity x 150 lb). Total Model Weight may vary as much as ±150 lbs. to allow for production build variation.

†Curb and Model Weights shown are for Hardtop models; for convertible models weights must be adjusted as follows: Front -11 lbs.; Rear -39 lbs.; Total -50 lbs.

# BLAZER

## GVWR SELECTOR

GVW Rating (lbs)	†GAWR (lbs)		Minimum Equipment Required for GVW Rating			
			Tire Capacities (lbs ea)		Chassis Equipment	
	Front	Rear	Front	Rear		

### C10 SERIES

6050	3220	3220	1605	1605	Standard
------	------	------	------	------	----------

### K10 SERIES

6200	3220	3220	1605	1605	Standard
------	------	------	------	------	----------

†GAWR's shown are the maximum for each axle with equipment listed. Other GAWR's are available, and they are determined as the minimum capacity of either axle, springs or tires.

## FRONT AND REAR TIRE AVAILABILITY CHART

### C-K10 SERIES

**Spare tire to match either front or rear tires must be ordered  
K10 models require matching front and rear tread**

FRONT				REAR			
Capacity (lbs ea)	Description	Option Number		Capacity (lbs ea)	Description	Option Number	
		Highway	▲On-Off Road			Highway	On-Off Road

### TUBELESS

1605	H78-15B	<b>HL</b>	<b>HR</b>	1605	H78-15B	<b>HL</b>	<b>HR</b>
1605	H78-15B White Stripe	<b>HM</b>	—	1605	H78-15B White Stripe	<b>HM</b>	—
1760	10-15B	<b>WR</b>	—	1760	10-15B	<b>WR●</b>	—
1760	10-15B White Stripe	<b>WS●</b>	—	1760	10-15B White Stripe	<b>WS●</b>	—
1790	L78-15B	<b>LB</b>	<b>LC</b>	1790	L78-15B	<b>LB</b>	<b>LC</b>
1790	L78-15B White Stripe	<b>LD</b>	—	1790	L78-15B White Stripe	<b>LD</b>	—
1905	LR78-15C Radial White Stripe	<b>CD</b>	—	1905	LR78-15C Radial White Stripe	<b>CD</b>	—

### TUBE-TYPE

1610	6.50-16C	<b>MG</b>	—	1610	6.50-16C	<b>MG</b>	—
1720	7.00-15C	<b>NH</b>	—	1720	7.00-15C	<b>NH</b>	—
1800	7.00-16C	<b>NK</b>	<b>NL</b>	1800	7.00-16C	<b>NK</b>	<b>NL</b>

▲On-Off road front tires available on K10 models only.

●Available on K10 models only.

# NOTES

# BLAZER

## POWER TEAMS

ENGINE	TRANSMISSION	TRANSFER CASE	REAR AXLE	
Type and Code	Type and Code	Make and Model	Make and Capacity (lb)	Ratio and Code

### C10 SERIES

			3.07 HE3	3.73 GT4	4.11 HO4	
● 250 1-bbl L6—LD4 (Standard Engine)	3-Speed Manual (Std)—M15	—	Chevrolet 3750 ♦	—	X(Std)	
	4-Speed (Chevrolet CH465)—M20			—	X	
	Turbo Hydra-matic—M40			—	X	
● 305 2-bbl V8—LG9	3-Speed Manual (Std)—M15			X(Std)	X	X
	4-Speed Manual (CH465)—M20			X(Std)	X	X
	Turbo Hydra-matic—M40			X(Std)	X	X
■ 350 4-bbl V8—LS9	3-Speed Manual (Std)—M15			X(Std)	X	X
	4-Speed (Chevrolet CH465)—M20			X(Std)	X	X
	Turbo Hydra-matic—M40			X(Std)	X	X

### K10 SERIES

			2.76 HC2	3.07 HE3	3.73 GT4	4.11 HO4	
● 250 1-bbl L6—LD4 Standard Engine)	3-Speed Manual (Std)—MC1 a	New Process #205	Chevrolet 3750 ♦	—	—	(XStd)	
	4-Speed (Chevrolet CH465)—M20			—	X(Std)	X	
	Turbo Hydra-matic—M40			—	X(Std)	X	
● 305 2-bbl V8—LG9	3-Speed Manual (Std)—MC1	New Process #205		—	—	X(Std)	X
	4-Speed Manual (CH465)—M20			Xb	X(Std)	X	X
	Turbo Hydra-matic—M40			Xb	X(Std)	X	X
■ 350 4-bbl V8—LS9	3-Speed Manual (Std)—M15	New Process #205		—	X(Std)	X	X
	4-Speed (Chevrolet CH465)—M20			Xb	X(Std)	X	X
	Turbo Hydra-matic—M40			Xb	X(Std)	X	X
■ 400 4-bbl V8—LF4	Turbo Hydra-matic—M40	New Process #203	Xb	X(Std)	X	X	

- Available for registration in the State of California when California Emission Certification is ordered.
- Not available for registration in the State of California.
- ♦ Locking Differential rear axle also available.
- a Not recommended for GVW of 6200 lb.
- b Economy ratio.

### ENGINE RATINGS

SAE Net Ratings @ 85°F	250 1-bbl L6	305 2-bbl V8	350 4-bbl V8	400 4-bbl V8
Net Horsepower.....	100 @ 3600 rpm	140 @ 3800 rpm	165 @ 3800 rpm	175 @ 3600 rpm
Net Torque, lb-ft.....	175 @ 1800 rpm	235 @ 2000 rpm	255 @ 2800 rpm	290 @ 2800 rpm