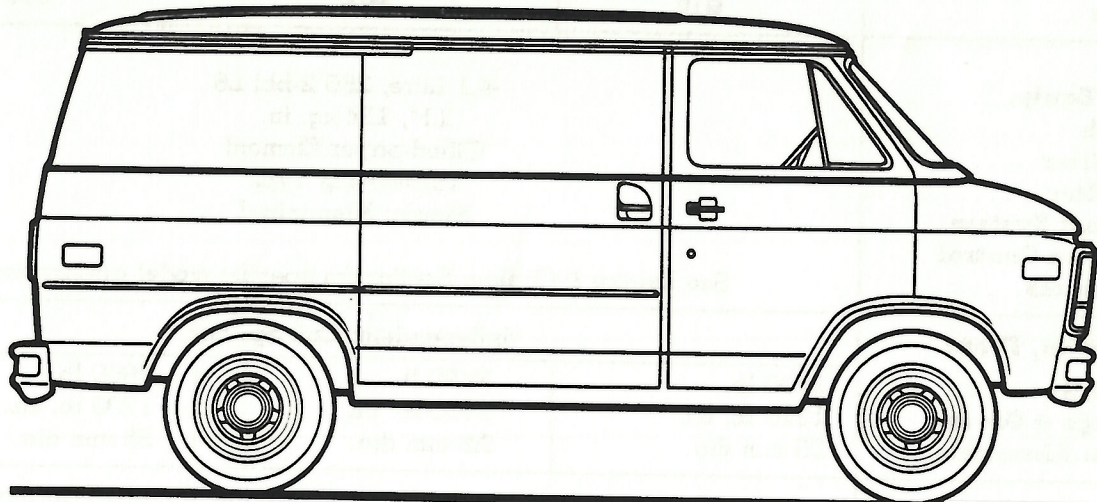


CHEVY VAN

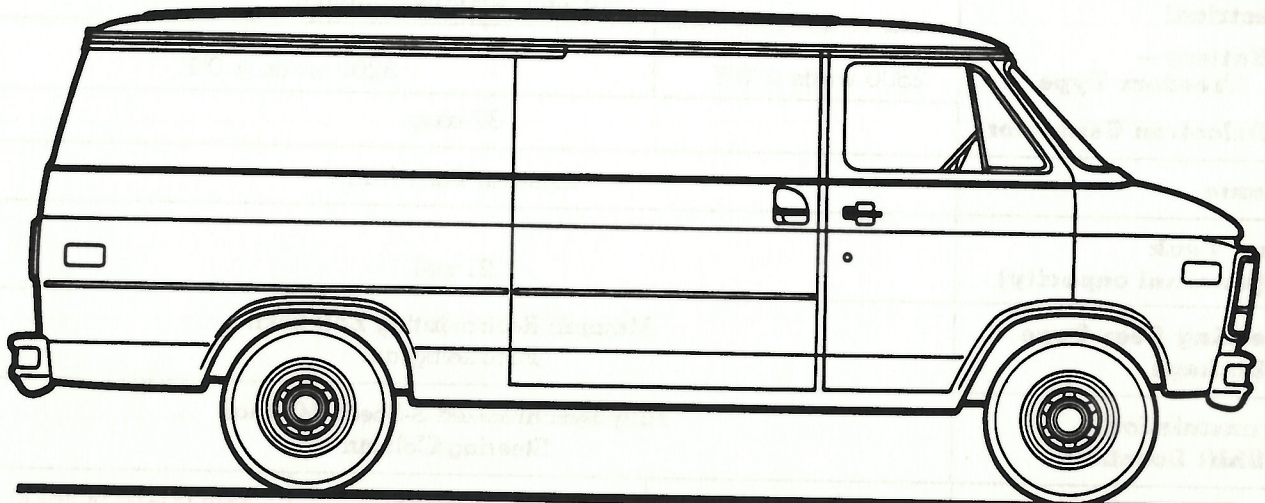
1979

CHEVY VAN MODEL SELECTOR



110" WB

SERIES	MODEL NUMBER		BODY ORDERING CODE
	110" WB	125" WB	
G10	CG11005	CG11305	ZW9
G20	CG21005	CG21305	ZW9
G20 Nomad	—	CG21305	ZM4
G30	CG31005	CG31305	ZW9



125" WB

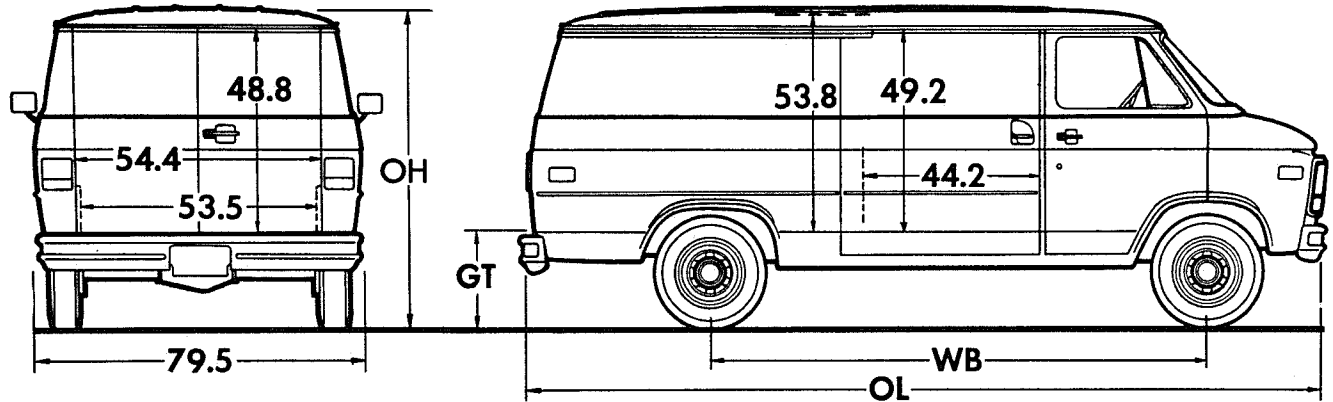
CHEVY VAN

STANDARD SPECIFICATIONS

(See Blue Tab Section for Specification Details)

Series	G10	G20	G30
Engine Base Equip. Clutch Air Filter Oil Filter Exhaust System Emission Control Systems	4.1 Litre, 250.2-bbl L6 11", 124 sq. in. Oiled-paper Element Throwaway Type Single; Aluminized See Engine & Cooling Section for specific model applications		
Suspension, Front Capacity Springs @ Ground Shock Absorbers	Independent; Coil Springs 3400 lb. 1310 lb. ea. 25 mm dia.		
Suspension, Rear Axle Capacity Axle Ratio Springs @ Ground Shock Absorbers	Salisbury Axle; Hypoid Drive; Two-stage Multi-leaf Springs 3100 lb. 3.08 1200 lb. ea. 25 mm dia.		
Brakes Front Rear Booster Parking	Hydraulic; Self-adjusting Disc; 11.86" Rotor Drum; 11" x 2" — Cable to Rear Wheels		
Electrical Battery— Freedom Type Delcotron Generator	12 Volt; Negative Ground 2500 watts @ 0°F. 3200 watts @ 0°F. 37 amp.		
Frame	Integral Body-frame		
Fuel Tank (nominal capacity)	21 gal.		
Steering Gear Type Linkage	Manual; Recirculating Ball Gear Parallelogram		
Transmission Shift Location	Fully Synchronized 3-Speed Manual Steering Column		
Tires	(5)FR78-15B(4PR)	(4)J78-15B(4PR)	(4)8.00-16.5C(6PR)
Wheels	(5) Disc 15" x 6"	(5) Disc 15" x 6"	(5) Disc 16.5" x 6.75"

CHEVY VAN



Side slide-in opening clearance 44.2"; max. box cargo height 49.2" with standard front passenger seat.
Rear slide-in opening clearance 52" with spare tire in position or 53.5" with spare tire removed; height 48.8".

Body Ordering Codes:
Chevy Van—ZW9
Chevy Nomad—ZM4

Sign Panel Area (side)	Capacity (cu ft)
110" WB—42" x 85"	110" WB—246
125" WB—42" x 109"	125" WB—296

Model	Wheelbase (in.)	Body—Payload Weight Distribution*	
		% Front	% Rear
G10-30	110	17	83
G10-30	125	18	82

Series	Ground Clearance (in) Δ	
	Front	Rear
G10	6.8	7
G20	7.5	7.5
G30	7.8	6.5

*Estimate based on water-level loading.

Model	Engine No. Cyl.	Dimensions (in) Δ				Curb Weight (lb)			Model Weight (lb)*		
		WB	OL	OH	GT	Front	Rear	Total	Front	Rear	Total

G10 SERIES

CG11005	6	110	178.2	78.8	23.9	2134	1578	3712	2240	1622	3862
CG11305	6	125	202.2	78.8	23.8	2182	1677	3859	2293	1716	4009

G20 SERIES

CG21005	6	110	178.2	80.2	25.2	2147	1566	3713	2253	1610	3863
CG21305	6	125	202.2	80.2	25.2	2179	1674	3853	2290	1713	4003
CG21305 ZM4 Nomad	6	125	202.2	80.2	25.2	2286	1816	4102	2721	2131	4852

G30 SERIES

CG31005	6	110	178.2	81.2	26.2	2151	1785	3936	2257	1829	4086
CG31305	6	125	202.2	81.2	26.1	2204	1881	4085	2315	1920	4235

Δ Dimensions with standard equipment, unloaded.

*Model Weight includes Curb Weight plus occupants (standard seating capacity x 150 lb.). Total Model Weight may vary as much as ± 150 lbs. to allow for production build variation.

CHEVY VAN

GVWR SELECTOR

GVW Rating (lbs)	†GAWR (lbs)		Minimum Equipment Required for GVW Rating		
	Front	Rear	Tire Capacity (lbs ea)		Chassis Equipment
			Front	Rear	

G10 SERIES

4900	2620	2400	1360	1360	Standard
5400	2720	2720	1360	1360	HD Front Springs (F60); HD Rear Springs (G50); Power Brakes (J50)
5600	2940	2940	1470	1470	
6000	3210	3210	1605	1605	HD Front Springs (F60); HD Rear Springs (G50); HD Power Brakes (J55)

G20 SERIES

6600	3380	3380	1690	1690	Standard
------	------	------	------	------	----------

†GAWR's shown are the maximum for each axle with equipment listed. Other GAWR's are available, and they are determined as the minimum capacity of either axle, springs or tires.

FRONT AND REAR TIRE AVAILABILITY CHART

G10 SERIES

Spare tire to match either front or rear tires must be ordered

FRONT			REAR			
Capacity (lbs ea)	Description	Option Number	Capacity (lbs ea)	Description	Option Number	
		Highway			Highway	On-Off Road
1360	FR78-15B Radial	KM	1360	FR78-15B Radial	KM	—
1470	GR78-15B Radial	KF	1470	GR78-15B Radial	KF	—
1470	GR78-15B Radial White Stripe	KG	1470	GR-78 15B Radial White Stripe	KG	—
1605	HR78-15B Radial	DU	1605	HR78-15B Radial	DU	—
1605	HR78-15B Radial White Stripe	EL	1605	HR78-15B Radial White Stripe	EL	—
1605	HR78-15B Radial White Lettered	EP	1605	HR78-15B Radial White Lettered	EP	—
1605	H78-15B	HL	1605	H78-15B	—	HR

G20 SERIES

Spare tire to match either front or rear tires is available at extra cost

1690	J78-15B	JC	1690	J78-15B	JC	JA
1690	J78-15B White Stripe	JB	1690	J78-15B White Stripe	JB	—
1690	JR78-15B Radial White Stripe	EX●	1690	JR78-15B Radial White Stripe	EX●	—
1690	JR78-15B Radial White Lettered	GC●	1690	JR78-15B Radial White Lettered	GC●	—

● JR78-15B Radial spare tire must be ordered.

CHEVY VAN

GVWR SELECTOR

GVW Rating (lbs)	†GAWR (lbs)		Minimum Equipment Required for GVW Rating			
	Front	Rear	Tire Capacity (lbs ea)		Chassis Equipment	
			Front	Rear		

G30 SERIES

GVW Rating (lbs)	Front GAWR (lbs)	Rear GAWR (lbs)	Front Tire Capacity (lbs ea)	Rear Tire Capacity (lbs ea)	Chassis Equipment
6600	3400	3460	1730	1730	Standard
7100	3400	3980	1990	1990	
●7400	3400	4200	2350	2350	
●7900	3900	4700	2350	2350	HD Front Springs (F60); HD Rear Springs (G50); Power Steering (N40); HD Power Brakes (J55)
#●8550	3900	5360	2680	2680	HD Front Springs (F60); HD Rear Springs (G50); Power Steering (N40); HD Power Brakes (J55); Stabilizer Bar (F59)

†GAWR's shown are the maximum for each axle with equipment listed. Other GAWR's are available, and they are determined as the minimum capacity of either axle, springs or tires.

● Requires V8 Engine. #Not available on 110" WB models.

FRONT AND REAR TIRE AVAILABILITY CHART

G30 SERIES

Spare tire to match either front or rear tires is available at extra cost

FRONT			REAR			
Capacity (lbs ea)	Description	Option Number	Capacity (lbs ea)	Description	Option Number	
		Highway			Highway	On-Off Road
1730	8.00-16.5C	SC	1730	8.00-16.5C	SC	—
1990	8.75-16.5C	TC	1990	8.75-16.5C	TC	—
2350	8.75-16.5D	TE	2350	8.75-16.5D	TE	TF
2350	8.75-16.5D White Stripe	TM	2350	8.75-16.5D White Stripe	TM	—
2350	8.75R-16.5D Radial Steel Belted	RU	2350	8.75R-16.5D Radial Steel Belted	RU	—
2680	8.75-16.5E	TH▲	2680	8.75-16.5E	TH▲	—

▲Not available on 110" WB models.

CHEVY VAN

POWER TEAMS

ALL STATES EXCEPT CALIFORNIA

G10 SERIES

W/O G80 LOCKING DIFFERENTIAL REAR AXLE

Engine	Transmission	GVWR	4900-5400-5600-6000			
			Axle Ratio	2.73	3.08	3.42
Engine	Transmission	Axle Cap. (lb)	Axle Ratio Codes Δ			
■ 4.1 Litre 250 2-bbl L6—LE3 (Standard)	3-Speed—MM3 (Std)	3500	—	GQ1	HE4	—
	Automatic—MX1		—	GQ1	HE4	—
■ 5.0 Litre 305 2-bbl V8—LG9	3-Speed—MM3 (Std)		—	GQ1	HE4	—
	Automatic—MX1		GQ1	HE3	HE4	—
5.7 Litre 350 4-bbl V8—LS9	3-Speed—MM3 (Std) ■		—	GQ1	HE4	—
	Automatic—MX1 Without NA6 High Altitude Emissions		GQ1	HE3	HE4	—
	Automatic—MX1 With NA6 High Altitude Emissions		—	—	—	GQ1

G10 SERIES

W/G80 LOCKING DIFFERENTIAL REAR AXLE ■

Engine	Transmission	GVWR	4900		5400-5600			6000	
			Axle Ratio	2.76	3.07	2.76	3.07	3.40	2.76
Engine	Transmission	Axle Cap. (lb)	Axle Ratio Codes Δ						
4.1 Litre 250 2-bbl L6—LE3 (Standard)	3-Speed—MM3 (Std) Without HD Power Brakes	3500	—	GQ1	—	GQ1	—	—	—
	3-Speed—MM3 (Std) With HD Power Brakes		—	GQ1	—	—	GQ1	—	GQ1
	Automatic—MX1 Without HD Power Brakes		—	GQ1	—	GQ1	—	—	—
	Automatic—MX1 With HD Power Brakes		—	GQ1	—	—	GQ1	—	GQ1
5.0 Litre 305 2-bbl V8—LG9	3-Speed—MM3 (Std) Without HD Power Brakes		—	GQ1	—	GQ1	—	—	—
	3-Speed—MM3 (Std) With HD Power Brakes		—	GQ1	—	—	GQ1	—	GQ1
	Automatic—MX1 Without HD Power Brakes		GQ1	HE3	GQ1	HE3	—	—	—
	Automatic—MX1 With HD Power Brakes		GQ1	HE3	GQ1	—	HE4	GQ1	HE4
5.7 Litre 350 4-bbl V8—LS9	3-Speed—MM3 (Std) Without HD Power Brakes		—	GQ1	—	GQ1	—	—	—
	3-Speed—MM3 (Std) With HD Power Brakes		—	GQ1	—	—	GQ1	—	GQ1
	Automatic—MX1 Without HD Power Brakes		GQ1	HE3	GQ1	HE3	—	—	—
	Automatic—MX1 With HD Power Brakes		GQ1	HE3	GQ1	—	HE4	GQ1	HE4

Δ GQ1 indicates standard axle ratio.

■ Not available with NA6 High Altitude Emission Equipment.

ENGINE RATINGS

SAE Net Ratings @85°F	4.1 Litre 250 2-bbl L6*	5.0 Litre 305 2-bbl V8*	5.7 Litre 350 4-bbl V8*♦	5.7 Litre 350 4-bbl V8*■
Net Horsepower.....	130 @ 4000	140 @ 4000	165 @ 3600	155 @ 3600
Net Torque, lb-ft.....	210 @ 2000	240 @ 2000	270 @ 2000	260 @ 2000
SAE Net Ratings @ 85°F	5.7 Litre 350 4-bbl V8**	6.6 Litre 400 4-bbl V8*	6.6 Litre 400 4-bbl V8**	
Net Horsepower.....	165 @ 3800	185 @ 3600	180 @ 3600 rpm	
Net Torque, lb-ft.....	255 @ 2800	300 @ 2400	310 @ 2400 rpm	

*Light and Medium Duty Emissions. **Heavy Duty Emissions ■Requires NA6 High Altitude Emissions.

♦Except G30 with MX1 Automatic Transmission (includes air pump): Net Horsepower 155 @ 3600; Net Torque, lb-ft 260 @ 2000 rpm.

CHEVY VAN

POWER TEAMS

ALL STATES EXCEPT CALIFORNIA

G20 SERIES

W/O G80 LOCKING DIFFERENTIAL REAR AXLE

Engine	Transmission	GVWR Axle Ratio	6600				
			2.73	3.08	3.42	3.73	4.10
		Axle Cap. (lb)	Axle Ratio Codes [▲]				
4.1 Litre 250 2-bbl L6—LE3 (Standard)	3-Speed—MM3 (Std)	3500	—	—	—	GQ1	HO4
	Automatic—MX1		—	—	—	GQ1	HO4
5.7 Litre 350 4-bbl V8—LS9	3-Speed—MM3 (Std)		—	—	GQ1	GT4	—
	Automatic—MX1		GQ1	HE3	HE4	—	—
6.6 Litre 400 4-bbl V8—LF4	Automatic—MX1		GQ1	—	HE4	—	—

G20 SERIES

W/G80 LOCKING DIFFERENTIAL REAR AXLE

Engine	Transmission	GVWR Axle Ratio	6600	
			2.76	3.40
		Axle Cap. (lb)	Axle Ratio Codes [▲]	
5.7 Litre 350 4-bbl V8—LS9	3-Speed—MM3 (Std)	3500	—	GQ1
	Automatic—MX1		GQ1	HE4
6.6 Litre 400 4-bbl V8—LF4	Automatic—MX1		GQ1	HE4

G30 SERIES

Engine	Transmission	GVWR Axle Ratio	6600-7100			7400			7900-8550 ^c	
			3.21	3.75	4.09	3.21	3.75	4.09	3.75	4.09
		Axle Cap. (lb)	Axle Ratio Codes [▲]							
4.1 Litre 250 2-bbl L6—LE3 (Standard)	3-Speed—MM3 (Std)	5700 [◆]	—	—	GQ1 ^a	—	—	—	—	—
	Automatic—MX1		—	—	GQ1 ^a	—	—	—	—	—
5.7 Litre 350 4-bbl V8—LS9	3-Speed—MM3 (Std)		—	GQ1	GX5	—	GQ1	GX5	GQ1	GX5
	Automatic—MX1		GQ1 ^b	GX4	GX5	GQ1 ^b	GX4	GX5	GQ1	GX5
6.6 Litre 400 4-bbl V8—LF4	Automatic—MX1		GQ1 ^b	GX4	GX5	GQ1 ^b	GX4	GX5	GQ1	GX5

▲ GQ1 indicates standard axle ratio.

◆ Locking Differential rear axle also available.

^a Locking Differential rear axle requires J55 HD Power Brakes.

^b Not available with G50 HD Rear Springs.

^c 8550 GVWR not available on 110" wb models.

FOR ENGINE RATINGS—SEE PAGE 6

CHEVY VAN

POWER TEAMS

CALIFORNIA ONLY

G10 SERIES W/O G80 LOCKING DIFFERENTIAL REAR AXLE

Engine	Transmission	GVWR	4900-5400-5600-6000			
		Axle Ratio	2.73	3.08	3.42	
Engine	Transmission	Axle Cap. (lb)	Axle Ratio Codes [▲]			
4.1 Litre 250 2-bbl L6—LE3 (Standard)	3-Speed—MM3 (Std)	3500	—	GQ1	HE4	
	Automatic—MX1		—	GQ1	HE4	
5.7 Litre 350 4-bbl V8—LS9	3-Speed—MM3 (Std)		—	GQ1	HE4	
	Automatic—MX1		GQ1	HE3	HE4	

G10 SERIES W/G80 LOCKING DIFFERENTIAL REAR AXLE

Engine	Transmission	GVWR	4900		5400-5600			6000	
		Axle Ratio	2.76	3.07	2.76	3.07	3.40	2.76	3.40
Engine	Transmission	Axle Cap. (lb)	Axle Ratio Codes [▲]						
4.1 Litre 250 2-bbl L6—LE3 (Standard)	3-Speed—MM3 (Std) Without HD Power Brakes	3500	—	GQ1	—	GQ1	—	—	—
	3-Speed—MM3 (Std) With HD Power Brakes		—	GQ1	—	—	GQ1	—	GQ1
	Automatic—MX1 Without HD Power Brakes		—	GQ1	—	GQ1	—	—	—
	Automatic—MX1 With HD Power Brakes		—	GQ1	—	—	GQ1	—	GQ1
5.7 Litre 350 4-bbl V8—LS9	3-Speed—MM3 (Std) Without HD Power Brakes		—	GQ1	—	GQ1	—	—	—
	3-Speed—MM3 (Std) With HD Power Brakes		—	GQ1	—	—	GQ1	—	GQ1
	Automatic—MX1 Without HD Power Brakes		GQ1	HE3	GQ1	HE3	—	—	—
	Automatic—MX1 With HD Power Brakes		GQ1	HE3	GQ1	—	HE4	GQ1	HE4

▲ GQ1 indicates standard axle ratio.

ENGINE RATINGS

SAE Net Ratings @ 85°F	4.1 Litre 250 2-bbl L6†	4.1 Litre 250 2-bbl L6‡	5.7 Litre 350 4-bbl V8*
Net Horsepower.....	125 @ 4000 rpm	130 @ 4000 rpm	155 @ 3600 rpm
Net Torque, lb-ft.....	205 @ 2000 rpm	205 @ 2000 rpm	260 @ 2000 rpm

SAE Net Ratings @ 85°F	5.7 Litre 350 4-bbl V8**	6.6 Litre 400 4-bbl V8*	6.6 Litre 400 4-bbl V8**
Net Horsepower.....	165 @ 3800 rpm	170 @ 3600 rpm	180 @ 3600 rpm
Net Torque, lb-ft.....	255 @ 2800 rpm	305 @ 1600 rpm	310 @ 2400 rpm

†Light Duty Emissions 10-Series only.
*Light and Medium Duty Emissions.

‡Light and Medium Duty Emissions 20- & 30-Series only.
**Heavy Duty Emissions.

CHEVY VAN

POWER TEAMS

CALIFORNIA ONLY

G20 SERIES

W/O G80 LOCKING DIFFERENTIAL REAR AXLE

		GVWR	6600				
		Axle Ratio	2.73	3.08	3.42	3.73	4.10
Engine	Transmission	Axle Cap. (lb)	Axle Ratio Codes [▲]				
4.1 Litre 250 2-bbl L6—LE3 (Standard)	3-Speed—MM3 (Std)	3500	—	—	—	GQ1	HO4
	Automatic—MX1		—	—	—	GQ1	HO4
5.7 Litre 350 4-bbl V8—LS9	3-Speed—MM3 (Std)		—	—	GQ1	GT4	—
	Automatic—MX1		GQ1	HE3	HE4	—	—
6.6 Litre 400 4-bbl V8—LF4	Automatic—MX1		GQ1	—	HE4	—	—

G20 SERIES

W/G80 LOCKING DIFFERENTIAL REAR AXLE

		GVWR	6600	
		Axle Ratio	2.76	3.40
Engine	Transmission	Axle Cap. (lb)	Axle Ratio Codes [▲]	
5.7 Litre 350 4-bbl V8—LS9	3-Speed—MM3 (Std)	3500	—	GQ1
	Automatic—MX1		GQ1	HE4
6.6 Litre 400 4-bbl V8—LF4	Automatic—MX1		GQ1	HE4

G30 SERIES

		GVWR	6600-7100			7400			7900-8550 ^c	
		Axle Ratio	3.21	3.75	4.09	3.21	3.75	4.09	3.75	4.09
Engine	Transmission	Axle Cap. (lb)	Axle Ratio Codes [▲]							
4.1 Litre 250 2-bbl L6—LE3 (Standard)	3-Speed—MM3 (Std)	5700 [◆]	—	—	GQ1 ^a	—	—	—	—	—
	Automatic—MX1		—	—	GQ1 ^a	—	—	—	—	—
5.7 Litre 350 4-bbl V8—LS9	3-Speed—MM3 (Std)		—	GQ1	GX5	—	GQ1	GX5	GQ1	GX5
	Automatic—MX1		GQ1 ^b	GX4	GX5	GQ1 ^b	GX4	GX5	GQ1	GX5
6.6 Litre 400 4-bbl V8—LF4	Automatic—MX1		GQ1 ^b	GX4	GX5	GQ1 ^b	GX4	GX5	GQ1	GX5

- [▲] GQ1 indicates standard axle ratio.
[◆] Locking Differential rear axle also available.
^a Locking Differential rear axle requires J55 HD Power Brakes.
^b Not available with G50 HD Rear Springs.
^c 8550 GVWR not available on 110" wb models.

FOR ENGINE RATINGS—SEE PAGE 8

NOTES

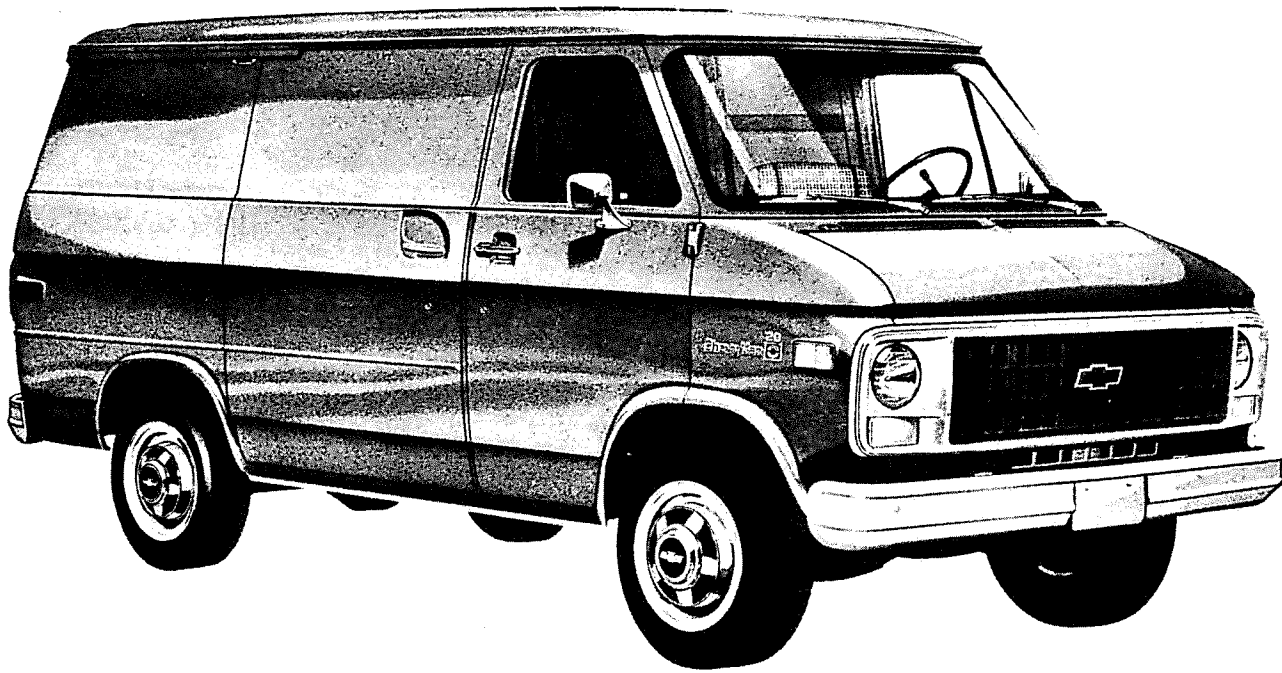
CHEVY VAN

**CAB & BODY FEATURES
BODY CONSTRUCTION
SEATING ARRANGEMENTS
COLOR & TRIM CHARTS
TWO-TONES**

CHEVY VAN

CHEVY VAN—STANDARD MODEL

The standard model includes the following items as standard equipment



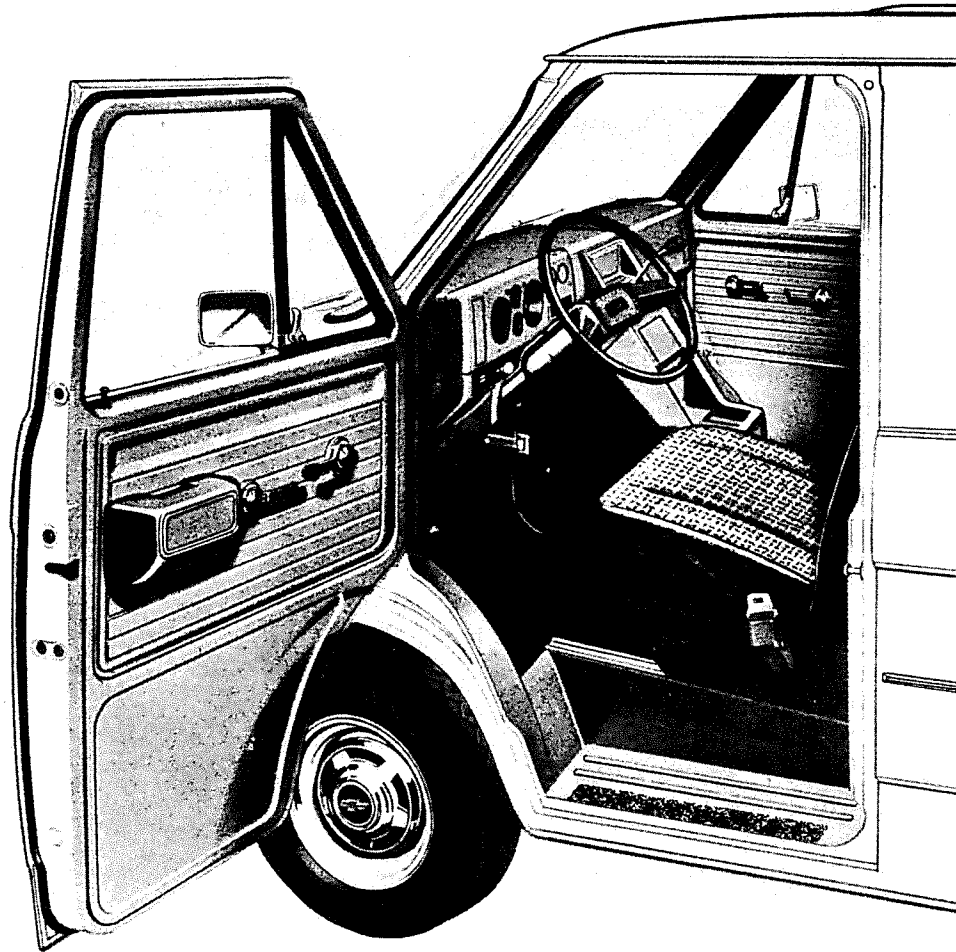
EXTERIOR

- **Bumpers:** Front and rear; painted silver
- **Colors:** See Interior and Exterior Color Selection Chart
- **Doors:** RH and LH front side doors; RH sliding side load door; RH and LH rear load doors
- **Door Opening and Locking Methods:**
 - Front side doors: Outside pushbutton latch release in door handle with separate key lock; keyless outside locking
 - Sliding side load door: Turning outside handle counterclockwise releases both front and rear latches; to close door, reverse procedure; for opening and closing of door from inside, reverse outside procedure; door is locked from outside through a separate key lock
 - RH and LH rear doors: Pushbutton latch release in RH door handle opens door, and after opening RH door, LH door latch is released by lower inside lift handle; separate key lock cylinder in RH door
- **Glass:** Windshield; RH and LH front side door drop glass and pivoting ventipanes
- **Grille:** Molded plastic; painted dark gray; integral Chevrolet emblem at center includes bright insert with ochre trim
- **Grille Frame:** Headlamp/parking lamp bezels plus upper and lower moldings joining extensions of lamp bezels; painted silver
- **Horn:** Single, electric low-note
- **Hub Caps:** Bright metal with black and ochre trim
- **Keys:** Two-key system, with separate keys for ignition switch and door locks
- **Lights:**
 - Backup lamps: Two rear (integral with taillamps)
 - Combination parking/direction/hazard: Two front
 - Combination tail/stop/direction/hazard: Two rear
 - Headlamps: Two; Power Beam
 - License plate lamp: Single rear
 - Side marker lamps and reflectors: Two front and two rear
- **Mirrors:** RH and LH chrome; fixed arm with adjustable 4½" x 6" head
- **Nameplates:** Bright "Chevy Van/Series" plate on front fenders; bright "Chevrolet" plate on LH rear door
- **Tools:** Mechanical jack and wheel wrench
- **Undercoating:** On body rocker panels, step panels, wheel-houses
- **Wheels:** Painted white
- **Windshield Wipers and Washers:** Electric, 2-speed wipers with matte finish on exposed metal portions; coordinated washers

CHEVY VAN

CHEVY VAN—STANDARD MODEL

The standard model includes the following items as standard equipment



INTERIOR

- **Air Vents:** RH and LH; individually controlled
- **Armrest:** LH side door; padded
- **Ashtray:** At top of instrument panel extension; with door
- **Colors:**
 - Painted areas: Same as exterior primary color choice
 - Interior trim: Coordinated with seat trim color choice
- **Door Locks:** Inside pushbutton lock/release (except rear doors)
- **Door Seals:** Latex foam rubber
- **Floor Covering:** Embossed black rubber mats, LH front floor area and wheelhouse
- **Headliner:** Mystic-colored perforated hardboard; driver area
- **Heater and Defogger:** Deluxe-air
- **Instruments:**
 - Gages: Speedometer, odometer, and fuel
 - Switches: Main, for control of exterior lights, instrument lights, and dome lights; wiper-washer; headlamp beam (foot); ignition; direction signal (with lane change position); hazard warning; heater fan; door-operated dome lamp
 - Warning lights: Generator, oil pressure, engine temperature, service-parking brake, direction/hazard signal, and high beam
- **Instrument Panel:** Bright trim on gauge bezels; black applique with bright trim on area below instrument cluster
- **Instrument Panel Control Knobs:** Bright, with brush finish and black graphic identification for main light switch control
- **Insulation and Sound Deadening Material:** Dash (fire-wall), LH front floor panel, engine cover extension and inside engine cover
- **Lights:** Instruments, front and rear dome
- **Parcel Tray:** On top surface of instrument panel extension; includes beverage holder provisions
- **Safety Step Pads:** Front and sliding side door step panels
- **Seat:** Front, bucket driver; adjustable; all-vinyl trim; foam padded. See Interior and Exterior Color Selection chart for color availability
- **Seat Belt:** Pushbutton release, with outboard retractor
- **Spare Tire Carrier:** RH rear side
- **Steering Wheel:** 16" diameter black soft vinyl wheel with 2 spokes
- **Stowage Box:** In front face of instrument panel extension; with door
- **Sunshade:** LH padded, color keyed
- **Trim Panels:** Painted metal with decorative embossments; front side doors and sliding side door

CHEVY VAN

NOMAD MODEL OPTION—BODY ORDERING CODE ZM4

This model includes all standard equipment items plus the additions or substitutions listed below



EXTERIOR

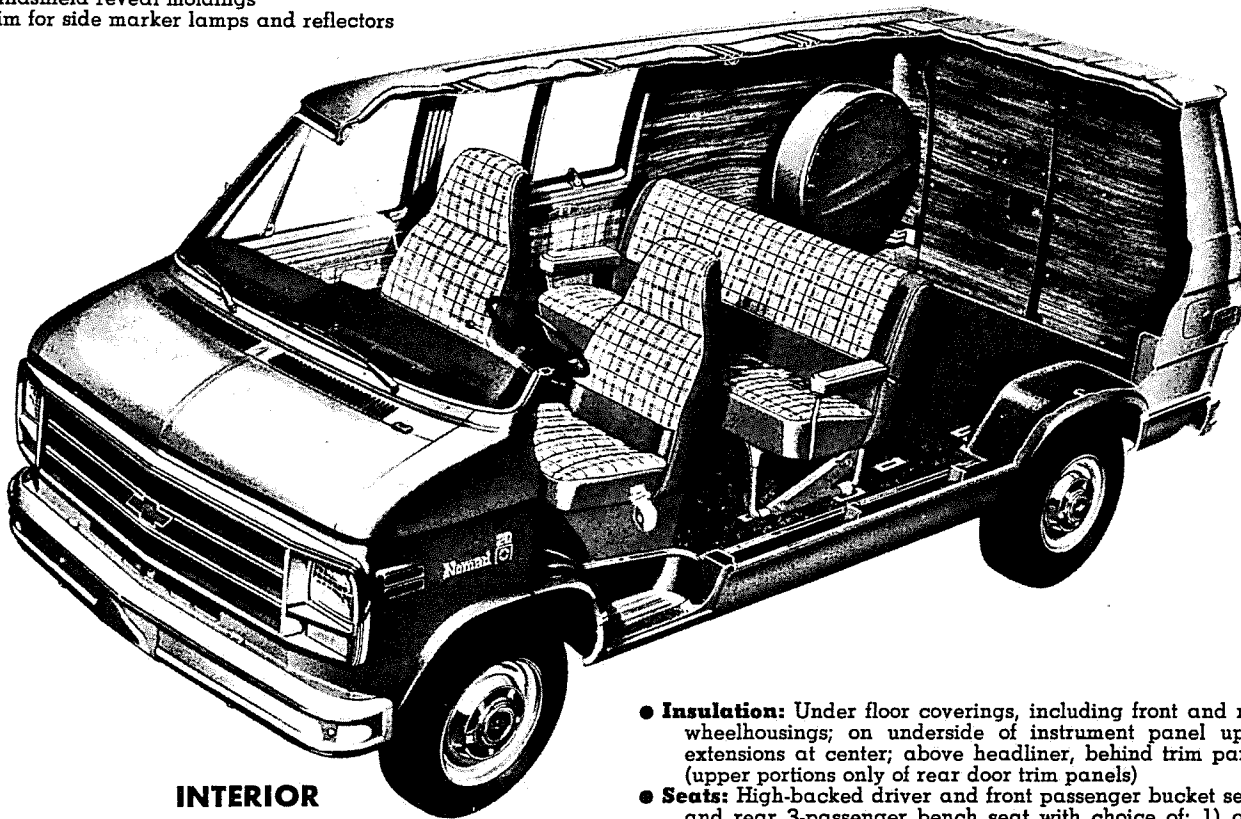
● **Bright Appearance Items:**

- "Nomad" nameplates on front fenders and on RH rear door
- Body side and rear lower moldings with black paint trim
- Upper and lower grille outline moldings
- Headlamp/parking lamp bezels
- Trim for grille
- Front and rear bumpers
- Windshield reveal moldings
- Trim for side marker lamps and reflectors

Taillamp bezels

Front door ventipane posts

- **Horn:** Addition, Electric, high-note
- **Special Headlamps:** Rectangular; single RH and LH
- **Special Side Marker Lamps and Reflectors:** RH and LH front and rear



INTERIOR

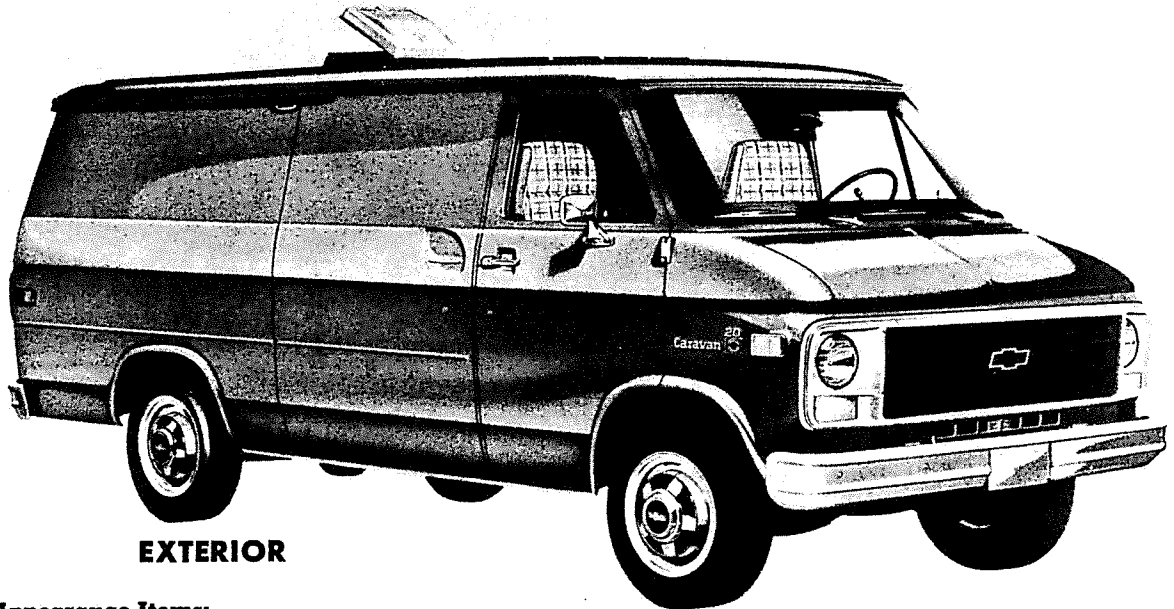
- **Armrest:** RH padded; color keyed
- **Cargo Tie-Down Provisions:** Six; in rear compartment floor
- **Cigar Lighter**
- **Coat Hooks:** LH and RH in rear compartment
- **Deluxe Instrument Panel:** Two-tone color treatment; wood grain applique with bright trim for central area; black applique with bright trim on RH side
- **Floor Covering:** Color-keyed carpeting to rear of rear seat, including front wheelhousings and lower portion of engine cover; color-keyed rubber mats aft of rear seat including rear wheelhousings
- **Headliner:** Mystic colored; full length; foam-backed cloth

- **Insulation:** Under floor coverings, including front and rear wheelhousings; on underside of instrument panel upper extensions at center; above headliner, behind trim panels (upper portions only of rear door trim panels)
- **Seats:** High-backed driver and front passenger bucket seats, and rear 3-passenger bench seat with choice of: 1) oxen hide grain vinyl trim in blue, mystic, camel tan or carmine; or 2) plaid cloth/vinyl trim in blue, green, mystic, camel tan or carmine. Includes seat belt with retractor for front passenger seat, and three seat belts for rear seat
- **Spare Tire Cover:** Color-keyed vinyl
- **Sunshade:** RH padded, color-keyed
- **Trim Panels:** Embossed, color keyed vinyl panels with plaid pattern inserts on front and sliding side doors and on front LH sidewall. Chestnut color plywood panels on rear compartment sidewalls and rear doors
- **Windows:** Swing-out windows in RH sliding side door and in LH side panel opposite door

CHEVY VAN

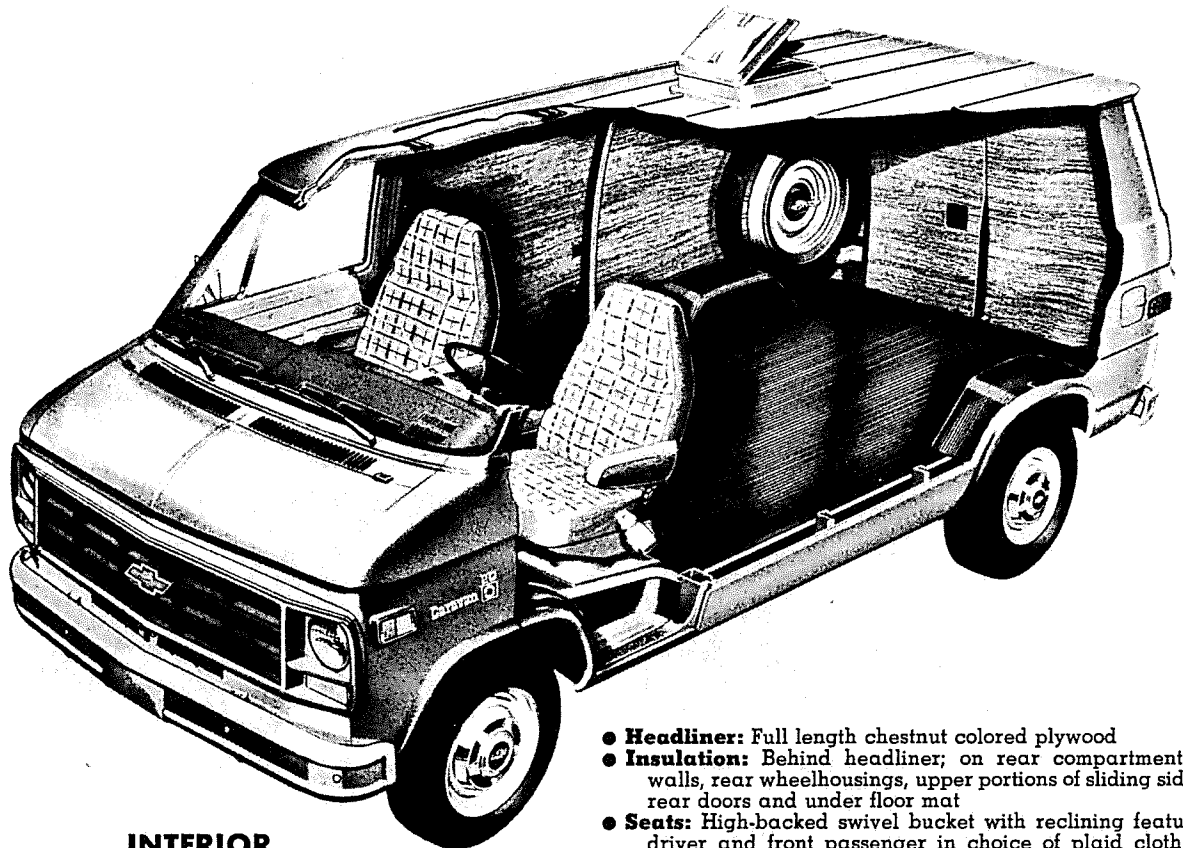
CARAVAN EQUIPMENT OPTION—RPO ZM1

This option includes all standard equipment items plus the additions or substitutions listed below



EXTERIOR

- **Bright Appearance Items:** "Caravan" nameplates on front fenders and on RH rear door
- **Roof Vent:** Translucent plastic crank-operated cover; includes screen



INTERIOR

- **Door Handles:** Inside; on RH rear door latching linkage (opening in door panel permits access to handle)
- **Floor Covering:** Black rubber mats for front passenger seat area and rear compartment, including front and rear wheel-housings
- **Headliner:** Full length chestnut colored plywood
- **Insulation:** Behind headliner; on rear compartment sidewalls, rear wheelhousings, upper portions of sliding side and rear doors and under floor mat
- **Seats:** High-backed swivel bucket with reclining feature for driver and front passenger in choice of plaid cloth/vinyl trim in mystic, camel tan or blue. Includes seat belt with retractor for passenger seat and door closing assist straps instead of armrests for both front doors
- **Sunshade:** RH padded, color-keyed
- **Trim Panels:** Chestnut color plywood panels on rear compartment sidewalls, sliding side door and rear doors

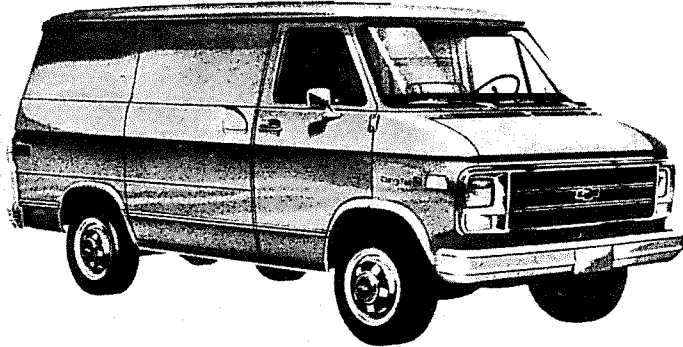
CHEVY VAN

CUSTOM APPEARANCE EQUIPMENT OPTION—RPO Z61

(This option includes all exterior items listed for the standard model plus the following additions or substitutions)

EXTERIOR

- **Bright Appearance Items:**
 - Headlamp/parking lamp bezels
 - Lower body side and rear moldings with black paint trim
 - Taillamp bezels
 - Trim for grille
 - Upper and lower grille outline moldings
- **Special Headlamps:** Rectangular; single RH and LH

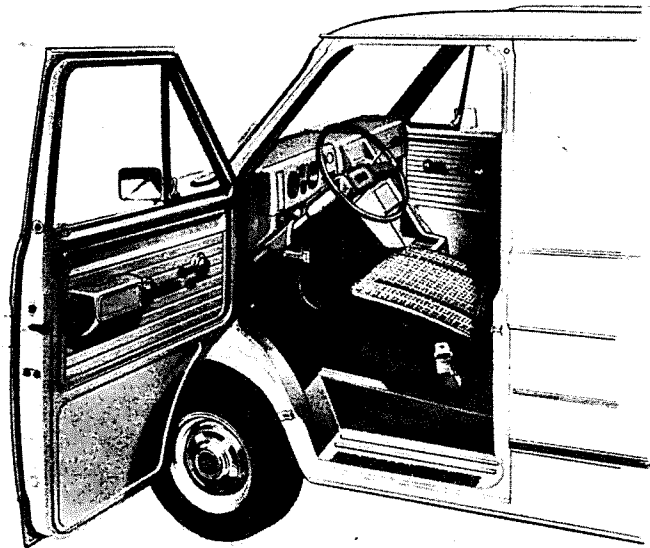


CUSTOM COMFORT AND CONVENIENCE EQUIPMENT OPTION—RPO Z62

(This option includes all interior items listed for the standard model plus the following additions or substitutions)

INTERIOR

- **Cigarette Lighter**
- **Horn:** Additional, electric high-note
- **Spare Tire Cover:** Black vinyl (G10); Color-keyed vinyl (G20-30)



BODY GLASS COMBINATIONS



**2-WINDOW RH SIDE BODY GLASS
(RPO A08)**

Two-window glass for RH side of vehicle only. Windows with fixed glass provided in RH rear-quarter panel and in sliding cargo door.



6-WINDOW BODY GLASS (RPO A07)

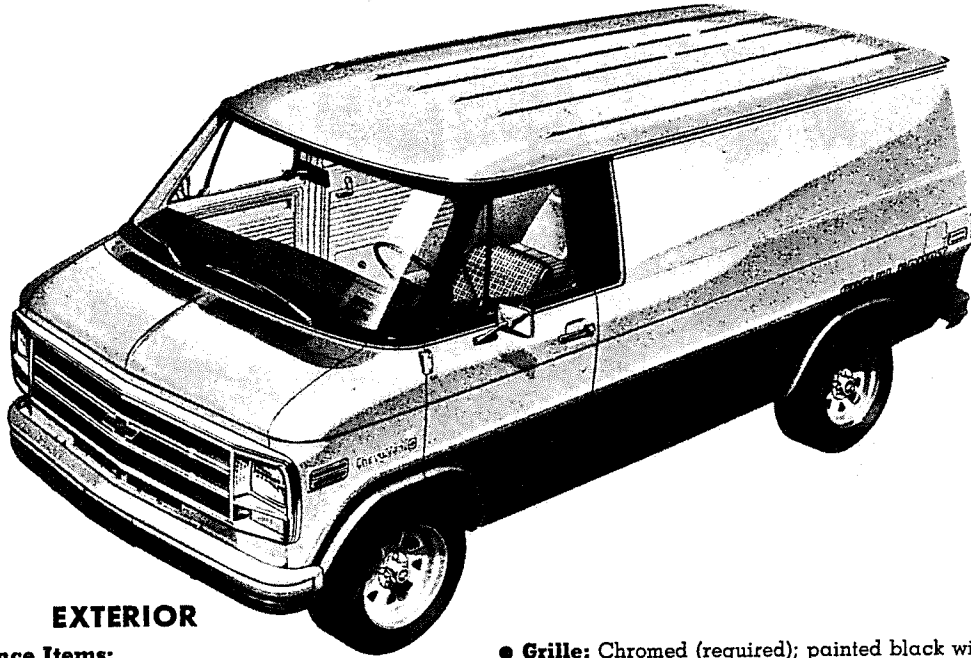
Full body glass consisting of six fixed-glass windows. Option is comprised of LH and RH rear-quarter window glass, LH front-quarter window glass, RH cargo door glass, and LH and RH rear cargo door glass. An inside rearview mirror is included.

See Options; Glass; for Swing-out Rear Door Glass (RPO A18),
Fixed Rear Door Glass (RPO A12), Fixed Side Door Glass (RPO A13),
Swing-out LH Side Glass (RPO A17), and Swing-out Side Door Glass (RPO A19).

CHEVY VAN

CHEVY SPORT EQUIPMENT OPTION—RPO Z77—G10-20 SERIES ONLY

*This option includes all standard equipment items plus the additions or substitutions listed below
(Requires RPO V22, chromed grille)*



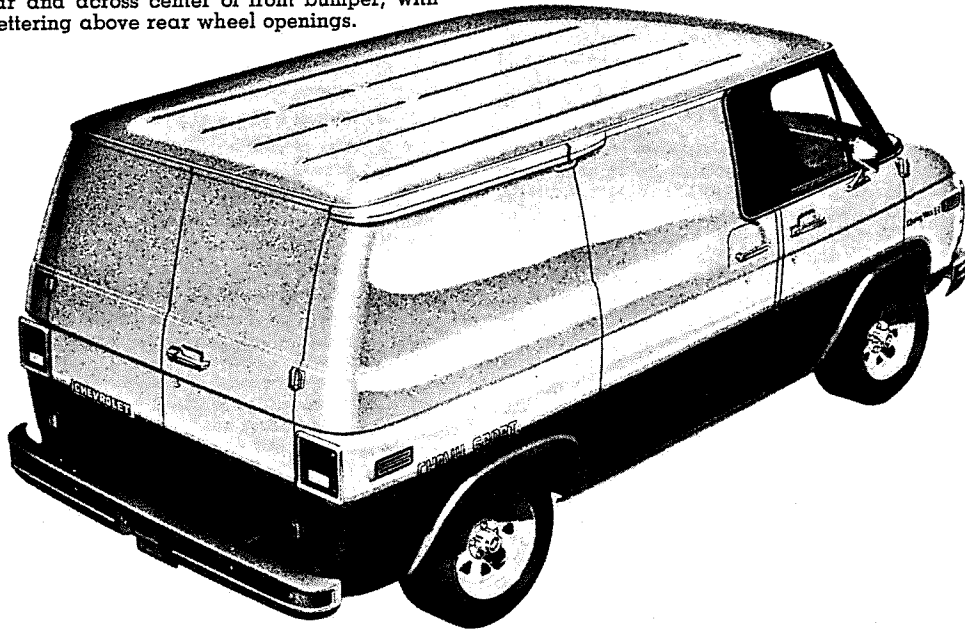
EXTERIOR

- **Bright Appearance Items:**
Headlamp/parking lamp bezels*
Taillamp bezels
Trim for grille*
Trim for side marker lamps
Upper and lower grille outline moldings*
- **Bumpers:** Front bumper painted primary body color at the top and secondary body color at the bottom. Rear bumper painted secondary body color.
- **Decals:** Special color-coordinated decal striping applied to body sides and rear and across center of front bumper, with "CHEVY SPORT" lettering above rear wheel openings.

- **Grille:** Chromed (required); painted black with bright trim.
- **Special Two-Tone Paint:** See chart below.
- **Wheels:** Styled type painted primary body color.
*Part of RPO V22 grille requirement.

INTERIOR

- **Seat Trim:** Color-coordinated to special exterior two-tone paint (See chart below).

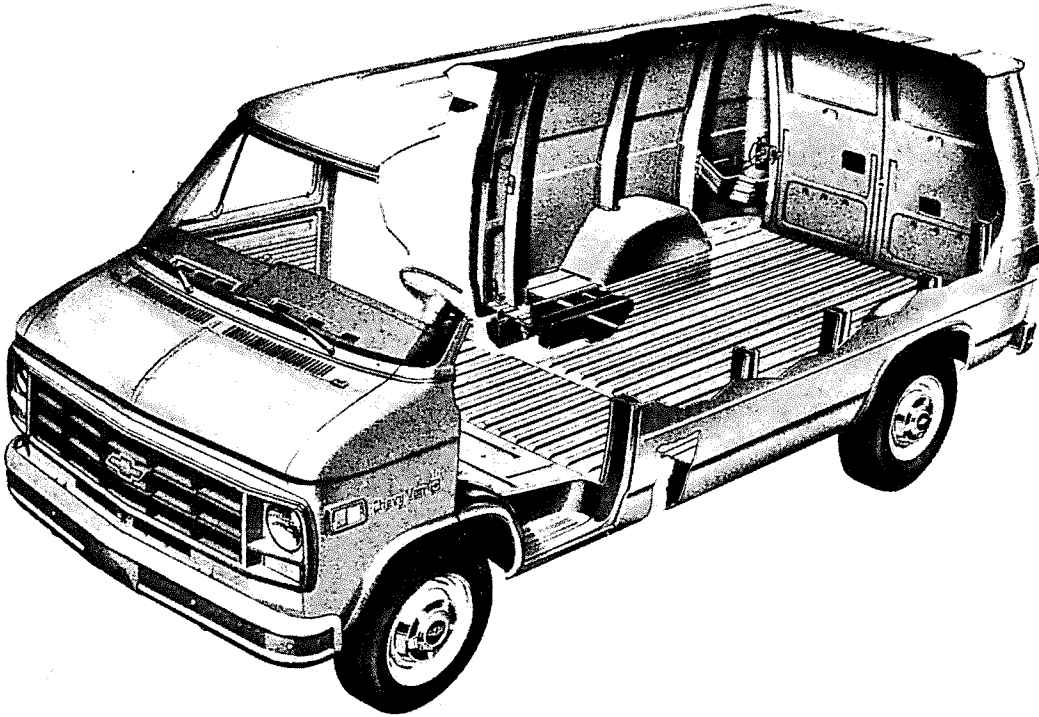


CHEVY SPORT COLOR AND TRIM CHART

Primary Body Color	Code	Secondary Body Color	Code	Decal Colors	Seat Trim Colors
Mystic Silver	17	Midnight Black	86	Yellows/Oranges	Mystic
Mariner Blue	25	Deep Blue	26	Blues	Blue
Light Camel	65	Cordova Brown	81	Yellows/Oranges	Camel

CHEVY VAN

BODY CONSTRUCTION FEATURES



The all-steel, Chevy Van and Sportvan bodies feature body-frame integral construction for outstanding structural rigidity and excellent durability. The basic bodies of either the nominal 15 foot (110" WB) or 17 foot (125" WB) models are comprised of an underbody structure, front end structure, left and right hand side panel structures, and a roof panel structure.

Longitudinal side rails, cross sills, and outriggers form the integral frame to which front and rear floor panels are welded, completing the underbody structure. Main structural members are of heavy-gage steel. A step well is incorporated in the underbody in the area adjacent to the front doors and sliding side door to provide convenient entry and exit.

The front end structure incorporates an engine compartment with outside opening hood panel which affords quick and easy access to 27 service points, such as the engine, radiator, battery, brake master cylinder and windshield washer reservoir. The radiator support upper tie bar and baffles are mechanically attached to facilitate engine removal. A plenum chamber with high-level air intake is utilized in the front end structure to assure a plentiful supply of dry, outside air for interior heating and ventilating as well as to add rigidity to the overall body structure. Air outlets to the interior are provided on the left hand and right hand sides by manually controlled doors (RH door omitted with optional air conditioning).

Side panel structures are comprised basically of seamless, one-piece outer panels reinforced with vertical strainers and welded to roof rails at the top and to rocker panels at the bottom. Left hand side panel structures utilize three vertical strainers, with a fourth strainer added for 17-foot bodies. Right hand side panel structures, which are smaller because of the provision for the base side load door, are reinforced with one vertical strainer in 15-foot body applications and two strainers in 17-foot body applications. Two window openings are incorporated in the left hand side panel for all Sportvans, or for Chevy Vans with RPO A07 body glass; the right hand side panel for Sportvan models, or Chevy Van with RPO A07 or A08 body glass, has one window. Provision is made at the rear of the left hand side panel for incorporation of a door to conceal the fuel tank filler.

Roof panels are of one-piece design and are embossed with six longitudinal stiffening ribs. Four roof bows support the 15-foot body

roof panel, while five roof bows are used for the 17-foot body.

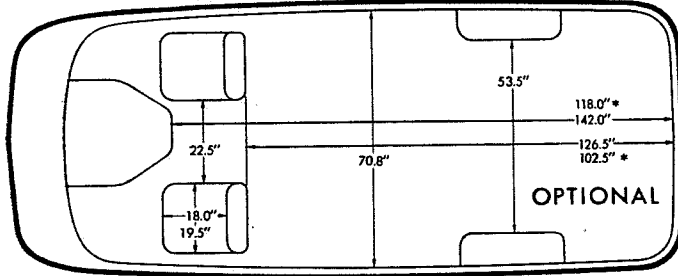
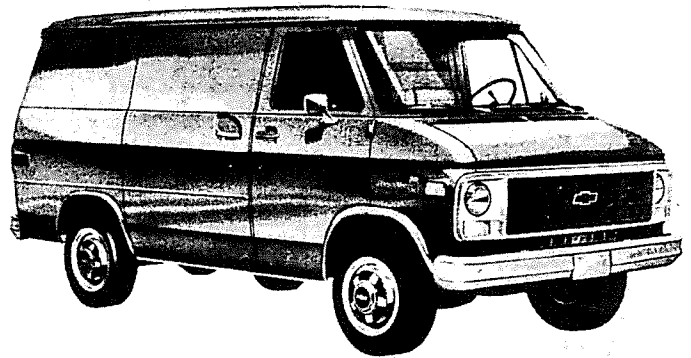
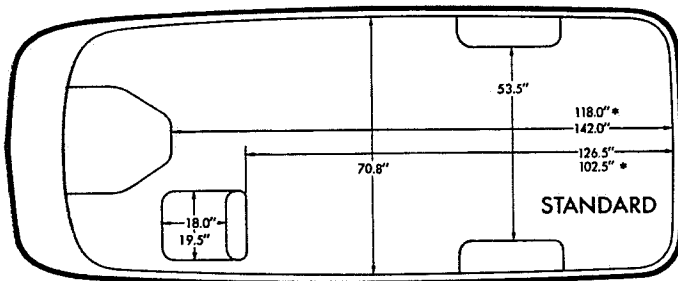
Special attention is given to corrosion prevention during the construction and final finishing of the Chevy Van/Sportvan body. The following body design features occur during the construction of the body:

1. Use of special steel (galvanized, zinc iron alloy, zinc coated) for body components especially subject to corrosion.
2. Use of one-piece outer panels to minimize exterior joints where corrosion might occur.
3. Use of heavy-gage steel for main underbody components.
4. Use of weld-through sealers in the assembly process to assure strong welds.

After body construction is completed, additional corrosion preventative steps are taken in the final finishing operation. The following occur:

1. The body, doors and hood are thoroughly cleaned by processing them through a 7-stage zinc phosphate washer.
2. Next, the body, doors and hood are primed by the Elpo electro-coating process which is the deposition of an electrically charged colloidal paint using an electric current. Electro-coating assures uniform application of primer even on surfaces normally inaccessible. In the process, the body, doors and hood are submerged in an emulsion of water and paint; the body, doors and hood and the emulsion are then oppositely charged, causing the paint to adhere to the metal.
3. Sealers are then applied to all critical interior-exterior joints.
4. Undercoating is sprayed on the undersurfaces of the wheelhousings, front door step panels and body rocker panels.
5. The body, doors and hood are painted with enamel.
6. The lower inside surfaces of the doors and rocker panels are sprayed with aluminum wax preservative.
7. Finally, clear polyurethane film stone shields are added ahead of the rear wheel openings to prevent stone chipping.

CHEVY VAN

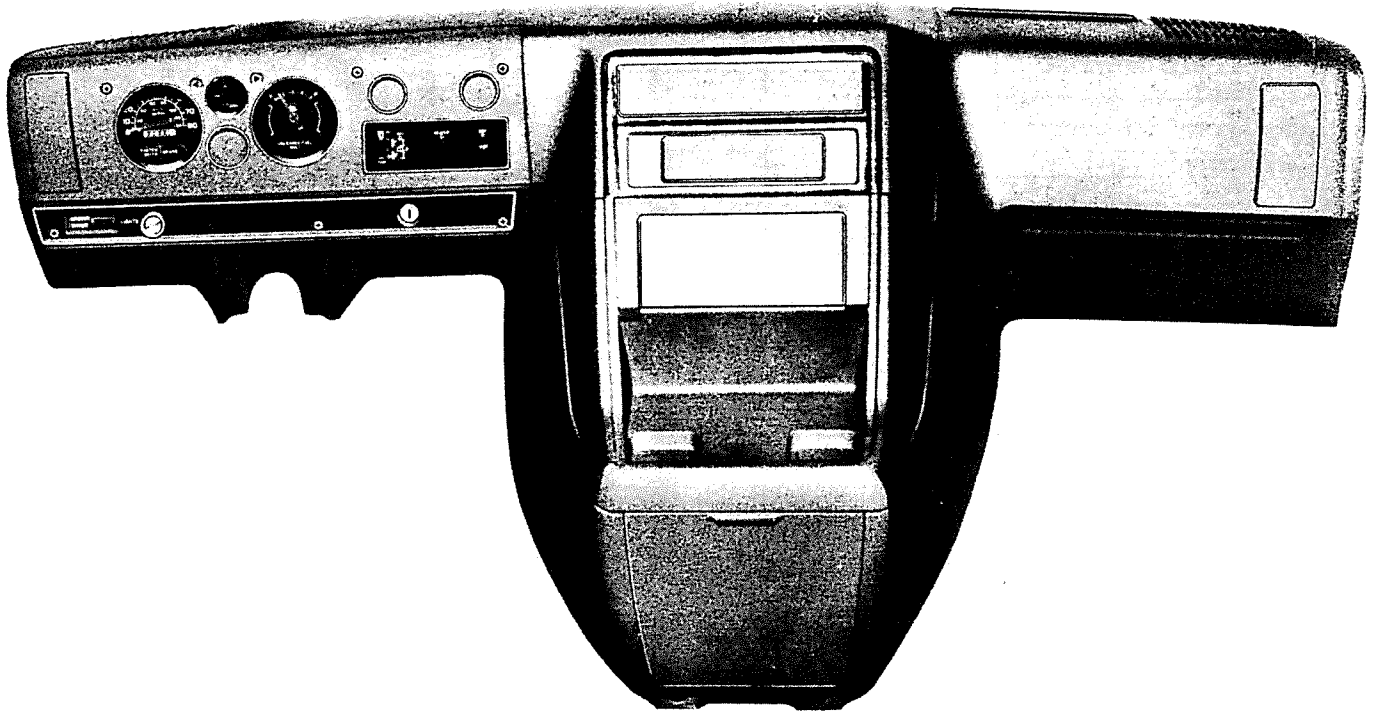


CHEVY VAN SEATING AND LOADSPACE

Seating arrangement for standard and optional seat.

*110" WB MODELS

INSTRUMENTS



The standard instrument cluster gages and heater controls are set into the molded plastic instrument panel and have bright bezels. The large LH opening contains the speedometer, odometer, high beam indicator, and service-parking brake warning light.

The large RH opening contains the fuel gage. An "Unleaded Fuel Only" notation is carried on the face of the fuel gage for models which require this fuel. The upper small opening between these two large openings houses the warning lights with graphic symbols for temperature, low oil pressure and generator. The lower opening is provided to house the optional electric clock RPO U35.

On the upper RH side the two small openings are provided to house the controls for the rear heater RPO C36 (LH) and the rear air conditioner RPO C69 (RH). Below these openings are the heater/defogger and optional front air conditioner controls. A similar instrument cluster with voltmeter, oil pressure gage and engine temperature gage is available as RPO Z53.

The area below the instrument cluster contains, from left to right, the windshield washer/wiper switch, main light switch, and ignition switch. This lower area has a black applique with bright trim. At the far left is the provision for the LH front air conditioner air outlet.

CHEVY VAN

INTERIOR AND EXTERIOR COLOR AVAILABILITY CHART

Please Note: Exterior and interior paint combinations shown in chart below are those *recommended* by Chevrolet. Any exterior color combination may be ordered with any available seat trim if the particular combination is desired by a customer.

SEAT TRIM			MODEL OPTION				SEAT TRIM COLOR AND ORDERING CODE					
Fabric	▲Code	Bucket Seat Type	Standard or Custom Z62	Caravan ZM1	Nomad ZM4	Beauville ZM8	Blue	Green	Carmine	Camel Tan	Mystic	Black
Standard Vinyl	V	Low Back	X				VDD2			VCC2		
Custom Vinyl	W	High Back	X		X	X	XDD4		XRR4	XCC4	XMM4	XBB4●
Custom Cloth	G	High Back Swivel*		X	X	X	KDD4	KGG4	KRR4	KCC4	KMM4	
				X	X	X	KDD6			KCC6	KMM6	
♦ EXTERIOR COLORS			Primary	Secondary		RECOMMENDED INTERIOR TRIM COLORS						
FROST WHITE			12	12		X	X	X	X	X	X	X
Mystic Silver			12	17		X		X		X		X
Deep Blue			12	26		X						X
Santa Fe Tan			12	60					X			X
Dark Carmine Red			12	71				X				X
Midnight Black			12	86		X					X	X
MYSTIC SILVER (Metallic)			17	17		X		X			X	X
Frost White			17	12		X		X			X	X
Deep Blue			17	26		X					X	X
Dark Carmine Red			17	71				X			X	X
Midnight Black			17	86		X					X	X
CHARCOAL (Metallic)			18	18		X		X			X	X
Frost White			18	12		X		X			X	X
Mystic Silver			18	17		X		X			X	X
Midnight Black			18	86		X		X			X	X
HAWAIIAN BLUE			23	23		X						X
Frost White			23	12		X						X
Deep Blue			23	26		X						X
MARINER BLUE (Metallic)			25	25		X						X
Frost White			25	12		X						X
Deep Blue			25	26		X						X
DEEP BLUE			26	26		X					X	X
Frost White			26	12		X					X	X
Mystic Silver			26	17		X					X	X
MEADOW GREEN (Metallic)			42	42			X					X
Frost White			42	12			X					X
HOLLY GREEN			46	46			X				X	X
Frost White			46	12			X				X	X
Mystic Silver			46	17			X				X	X
Santa Fe Tan			46	60			X					X
SANTA FE TAN			60	60						X		X
Frost White			60	12						X		X
LIGHT CAMEL (Metallic)			65	65						X		X
Frost White			65	12						X		X
Santa Fe Tan			65	60						X		X
CARMINE RED			70	70				X	X			X
Frost White			70	12				X	X			X
Mystic Silver			70	17				X	X			X
Santa Fe Tan			70	60				X	X			X
Dark Carmine Red			70	71				X	X			X
DARK CARMINE RED			71	71				X	X		X	X
Frost White			71	12				X	X		X	X
Mystic Silver			71	17				X			X	X
Santa Fe Tan			71	60					X			X
RUSSET METALLIC			74	74						X		X
Frost White			74	12						X		X
Santa Fe Tan			74	60						X		X
CORDOVA BROWN (Metallic)			81	81						X		X
Frost White			81	12						X		X
Santa Fe Tan			81	60						X		X
MIDNIGHT BLACK			86	86		X		X		X	X	X
Frost White			86	12		X		X		X	X	X
Mystic Silver			86	17		X		X		X	X	X
Santa Fe Tan			86	60				X	X			X
Dark Carmine Red			86	71				X			X	X

♦ Primary color shown in **BOLDFACE TYPE**; Secondary colors shown in Lightface Type. *Includes reclining feature.

▲ Seat Trim Codes: V—Houndstooth Pattern Vinyl; W—Oxen Hide Vinyl; G—Plaid Pattern Cloth

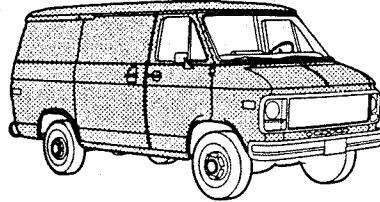
● Not available with ZM1 Caravan, ZM4 Nomad or ZM8 Beauville trim

CHEVY VAN

SOLID AND TWO-TONE* EXTERIOR COLOR COMBINATIONS

The application of paint for solid and two-tone exterior color combinations is shown below.

SOLID PAINT—ZY1

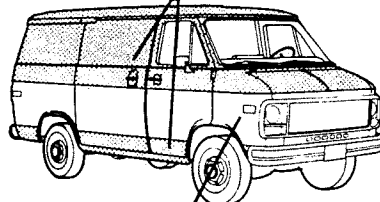


SOLID COLOR

Solid color paint (ZY1) is standard on all models. All painted areas of the body are the same color.

SPECIAL TWO-TONE—ZY3

Primary Body Color



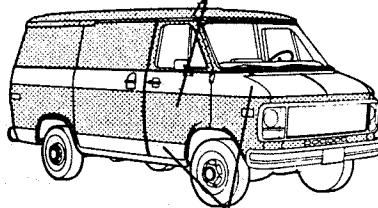
Secondary Body Color

SPECIAL TWO-TONE

Special two-tone (ZY3) paint colors consist of a primary paint color applied to the areas above the upper styling crease line and below the lower styling crease line. The secondary color is applied to the area between these styling crease lines. The choice of secondary colors is limited to those listed for each primary color in the color chart.

DELUXE TWO-TONE PAINT—ZY4

Primary Body Color



Secondary Body Color

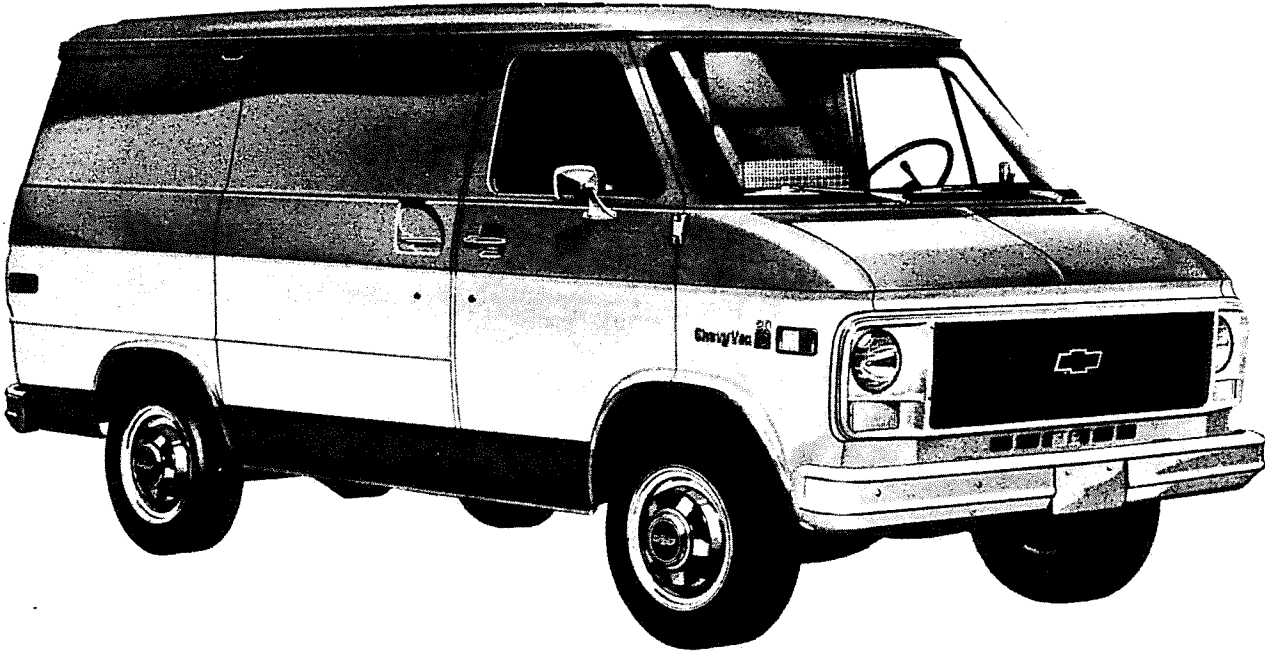
DELUXE TWO-TONE

Deluxe two-tone (ZY4) paint colors consist of a primary paint color applied to the areas above the belt line and also to the areas between the upper and lower styling crease lines. The secondary color is applied to the areas between the belt line and the upper styling crease line and also to the area below the lower styling crease line. The choice of secondary colors is limited to those listed for each primary color in the color chart.

*Optional at extra cost.

CHEVY VAN

TWO-TONE EXTERIOR COLOR COMBINATIONS*

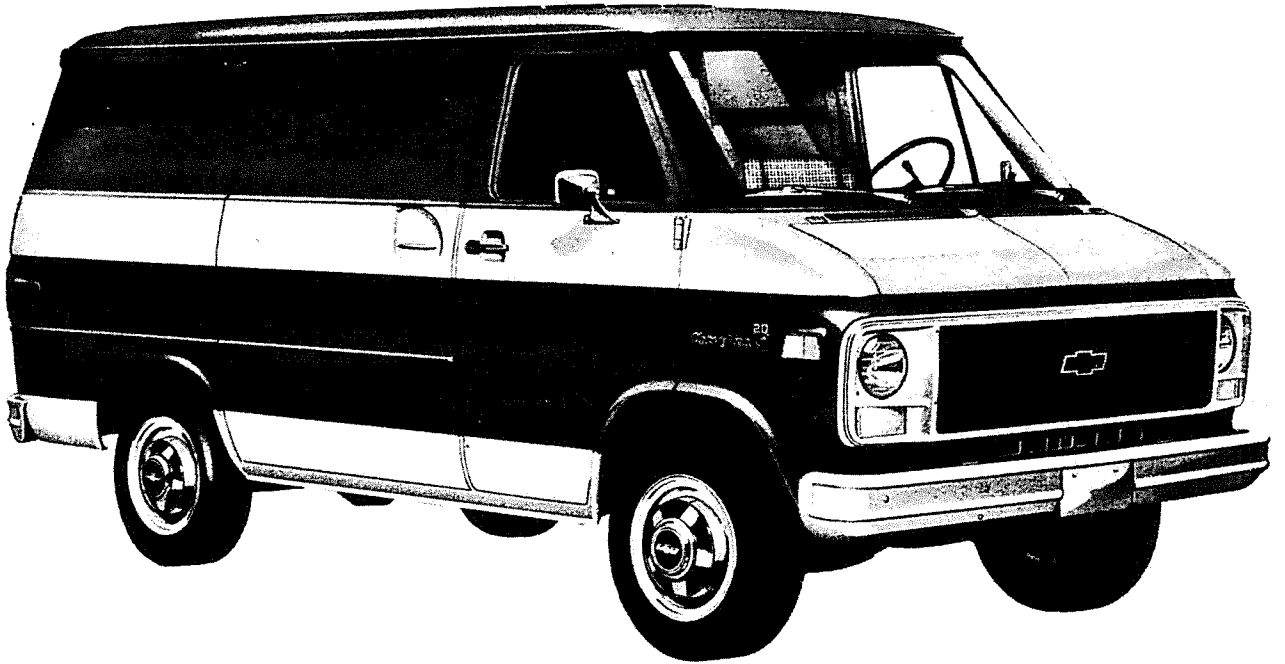


SPECIAL TWO-TONE

*Optional at extra cost.

CHEVY VAN

TWO-TONE EXTERIOR COLOR COMBINATIONS*



DELUXE TWO-TONE

*Optional at extra cost.

NOTES