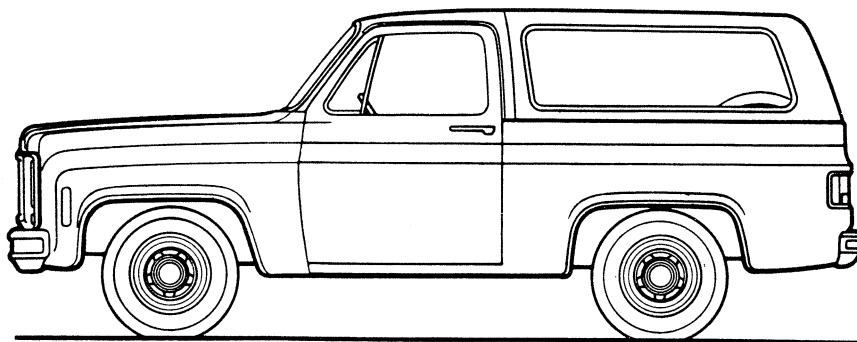


**BLAZER** *Original*  
1980

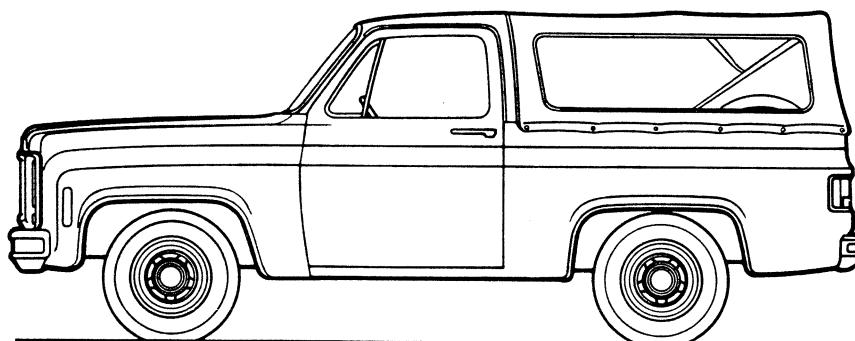
J731BLAZ-80

**BLAZER MODEL SELECTOR**



**HARDTOP**

SERIES	MODEL NUMBER	BODY ORDERING CODE	
		White Top	Black Top
<b>C10</b>	CC10516	Z58	Z59
<b>K10</b> (4-Wheel Drive)	CK10516	Z58	Z59



**CONVERTIBLE TOP**

SERIES	MODEL NUMBER	BODY ORDERING CODE
		White Top
<b>C10</b>	CC10516	C1A
<b>K10</b> (4-Wheel Drive)	CK10516	C1A

# BLAZER

## STANDARD SPECIFICATIONS

(See Blue Tab Section for Specification Details)

Series	C10	K10
<b>Engine</b> <b>Base Equip.</b> ..... <b>Clutch</b> ..... <b>Air Filter</b> ..... <b>Oil Filter</b> ..... <b>Exhaust System</b> ..... <b>Emission Control Systems</b> .....	4.1 Liter, 250 2-bbl L6 ■ 11", 124 sq. in. Oiled-paper Element Throwing Type Single; Aluminized See Engine & Cooling Section for specific model applications	
<b>Suspension, Front</b> ..... <b>Type</b> ..... <b>Axle Capacity</b> ..... <b>Axle Ratio</b> ..... <b>Springs @ Ground</b> ..... <b>Shock Absorbers</b> ..... <b>Stabilizer Bar</b> ..... <b>Hubs—Free Wheeling</b> .....	Independent Coil Springs 3250 lb. — 1625 lb. ea. 25mm dia. — —	Hypoid Driving Axle Leaf Springs 3600 lb. 3.73 1650 lb. ea. 25mm dia. 1.25" dia. Standard
<b>Suspension, Rear</b> ..... <b>Type</b> ..... <b>Axle Capacity</b> ..... <b>Axle Ratio</b> ..... <b>Springs, Main @ Ground</b> ..... <b>Shock Absorbers</b> .....	Salisbury Axle; Hypoid Drive; Two-stage Multi-leaf Springs Leaf Springs 3750 lb. 3.08 3.73 1700 lb. ea. 25mm dia.	
<b>Brakes</b> ..... <b>Front</b> ..... <b>Rear</b> ..... <b>Booster</b> ..... <b>Parking</b> .....	Hydraulic; Self-adjusting Disc; 11.86" Rotor Drum; 11.15" x 2.75" Dual Diaphragm Cable to Rear Wheels	
<b>Electrical</b> ..... <b>Battery—Freedom Type</b> ..... <b>Delcotron Generator</b> .....	12 Volt; Negative Ground 2500 watts @ 0°F. 37 amp.	
<b>Frame</b> ..... <b>Section Modulus</b> .....	Carbon Steel; 39,000 psi 3.14	
<b>Fuel Tank (nominal capacity)</b> .....	25 gal.	
<b>Steering Gear Type</b> ..... <b>Linkage</b> .....	Manual; Recirculating Ball Gear Parallelogram	Integral Power —
<b>Transmission</b> ..... <b>Shift Location</b> .....	Fully Synchronized 3-Speed Manual Steering Column	
<b>Transfer Case</b> ..... <b>Shift Lever</b> ..... <b>PTO Opening</b> .....	— — —	New Process 205 2-Speed Single Lever Left Side
<b>Tires</b> .....	(5) P215/75R15	
<b>Wheels</b> .....	(5) Disc 15" x 6"	

■ Standard engine not available for registration in the State of California; see Power Teams chart.

# BLAZER

## GVWR SELECTOR—ALL STATES

GVW Rating (lbs)	†GAWR (lbs)		Minimum Equipment Required for GVW Rating			
	Front	Rear	Tire Capacity (lbs ea)		Chassis Equipment	
			Front	Rear		

### C10 SERIES

6050	3166	3166	1583	1583	Standard
------	------	------	------	------	----------

### K10 SERIES

6200	3166	3166	1583	1583	Standard
------	------	------	------	------	----------

†GAWR's shown are the maximum for each axle with equipment listed. Other GAWR's are available, and they are determined as the minimum capacity of either axle, springs or tires.

## FRONT AND REAR TIRE AVAILABILITY CHART—ALL STATES

### C-K10 SERIES

**Spare tire to match either front or rear tires must be ordered  
K10 models require matching front and rear tread**

Description	Capacity (lbs ea)	Highway		On-Off Road		Spare
		Front	Rear	*Front	Rear	
<b>TUBELESS</b>						
<b>P215/75R-15 (Base)</b> Steel Belted Radial	1583	XKT	YKT	—	—	ZKT
<b>P215/75R-15 White Wall</b> Steel Belted Radial	1583	XKU	YKU	—	—	ZKU
<b>P235/75R-15</b> Steel Belted Radial	1843	XBD —	YBD —	— *XQJ	— YQJ	ZBD ZQJ
<b>P235/75R-15 White Wall</b> Steel Belted Radial	1843	XBJ	YBJ	—	—	ZBJ
<b>P235/75R-15 White Lettered</b> Steel Belted Radial	1843	XWV	YWV	—	—	ZWV

\*On-Off road front tires available on K10 models only.

# NOTES

# BLAZER

## 1980 VEHICLES WITH STANDARD EQUIPMENT

Prices shown are effective with vehicles produced on and after January 2, 1980

Description	Model Number	Body Code	Wheel Base	Factory D&H(a)	List Price	Mfr's Suggested Retail Price★	Group Number
◆ 6-Cylinder 4.1 Liter (250 Cu. In) 2 BBL Engine-Engine Ordering Code LE3							
<b>C10 Series 2-Wheel Drive</b>							
Utility (With White Hard Top) . . . . .	CC10516	Z58	106.5"	13.95	6244.00	6257.95	13
Utility (With Black Hard Top) . . . . .	CC10516	Z59	106.5"	13.95	6244.00	6257.95	13
Utility (With White Convertible Top) . . . . .	CC10516	C1A	106.5"	13.95	6141.00	6154.95	13
<b>K10 Series 4-Wheel Drive</b>							
Utility (With White Hard Top) . . . . .	CK10516	Z58	106.5"	13.95	7749.00	7762.95	14
Utility (With Black Hard Top) . . . . .	CK10516	Z59	106.5"	13.95	7749.00	7762.95	14
Utility (With White Convertible Top) . . . . .	CK10516	C1A	106.5"	13.95	7646.00	7659.95	14

★ Manufacturer's Suggested Retail Prices do not include applicable destination charges, state and local taxes, license fees, optional equipment or accessories or special items or services.

◆ Refer to Power Team Chart for California Emission Certification Requirements.

## OPTIONS AND ACCESSORIES WHEN INSTALLED BY CHEVROLET

Prices shown are effective with vehicles produced on and after January 2, 1980

Description	Added Weight (F R)	Option Number	Factory D&H(a)	List Price	Mfr's Suggested Retail Price◇
-------------	--------------------	---------------	----------------	------------	-------------------------------

### POWER TEAMS AND AXLES

(See Power Teams Chart for availability and complete specifications)

#### Engines:

5.0 Liter (305 Cu. In.) 2 BBL V8. Not available when YF5 California Emissions are specified. . . . .	76	14	LG9	N.A.	315.00	315.00
5.7 Liter (350 Cu. In.) 4 BBL V8. . . . .	83	18	LS9	N.A.	470.00	470.00

**Liquid Petroleum Gas Conversion:** All 1980 Light Duty Truck gasoline production engines may be converted to use LP Gas when permissible under Federal and State laws and regulations without causing harmful effect to the engine. Complete conversion to LPG requires adaptation by a local distributor who sells and services LPG equipment. The exhaust system of the vehicle must be revised by the local distributor. This includes removing the catalytic converter (if so equipped) and replacing it with a muffling device to comply with noise laws of their particular area. Caution should be exercised so that the fuel tank is mounted on and is vented to the outside of the vehicle. In addition, vehicles converted to LPG should not be stored in enclosed places such as garages.

#### Transmissions:

##### Automatic.

C10 series only.						
Without V8 engine. . . . .	27	9	MX1	N.A.	395.00	395.00
With V8 engine . . . . .	-14	-5	MX1	N.A.	395.00	395.00
K10 series only.						
Without V8 engine. . . . .	42	14	MX1	N.A.	395.00	395.00
With V8 engine . . . . .	12	4	MX1	N.A.	395.00	395.00
4-Speed Manual.						
C10 series only . . . . .	70	24	MM4	N.A.	175.00	175.00
K10 series only . . . . .	61	20	MM4	N.A.	175.00	175.00

**Axles, Rear:** (See Power Teams Chart for option number selection, availability and complete specifications)

Optional Ratio. . . . .	0	0	...	N.A.	27.00	27.00
Locking Differential. . . . .	0	3	G80	N.A.	197.00	197.00

(a) D & H Charges on vehicle and optional equipment include reimbursement to Chevrolet Motor Division for any tax that it has paid, incurred or agreed to pay thereon.

◇ State and local taxes not included.

# BLAZER

## OPTIONS AND ACCESSORIES WHEN INSTALLED BY CHEVROLET

Prices shown are effective with vehicles produced on and after January 2, 1980

Description	Added Weight (F R)		Option Number	Factory D&H(a)	List Price	Mfr's Suggested Retail Price ◇
<b>MODEL OPTION</b>						
<i>(See Interior and Exterior Color Selection Chart)</i>						
<b>Silverado:</b> With custom cloth or custom vinyl seats only. Includes V37 Front and Rear Bumper, N31 Custom Steering Wheel, YG1 Body Side Upper and Lower Moldings, taillight and rear door or tailgate moldings, bright front turn signal and front side marker lamp bezels, Silverado fender nameplates, bright windshield and rear side window moldings, color-keyed carpeting with bright sill plates, plastic door trim panels with storage pockets and bright brushed-finish accents, BC3 Deluxe Instrument Cluster, D34 Visor Mirror, V22 Deluxe Front Appearance, dual horns, Silverado nameplate on instrument panel, U37 Cigarette Lighter, BB5 Headliner, B96 Wheel Opening Moldings, special insulation, pillar trim panels, Floor and wheelhouse carpeting. Also includes P17 Spare Tire Cover, Z53 Voltmeter, Temperature and Oil Pressure Gages.	25	25	YE9	N.A.	895.00	895.00
<b>OTHER OPTIONS</b>						
<b>Air Conditioning:</b> <i>All-Weather.</i> Not available when V10 Cold-Climate Package is specified. Includes extra cooling and K77 55-Amp Generator.						
Without V8 engine	65	8	C60	N.A.	607.00	607.00
With V8 engine						
C10 series only	81	12	C60	N.A.	607.00	607.00
K10 series only	83	10	C60	N.A.	607.00	607.00
<b>Appearance, Deluxe Front:</b> Includes chromed grille and rectangular headlamps. Included when YE9 Silverado is specified	0	0	V22	N.A.	60.00	60.00
<b>Batteries:</b> <i>12-volt.</i>						
<i>Auxiliary.</i> 3500 Watt Delco Freedom	53	-9	TP2	N.A.	103.00	103.00
<i>Heavy-Duty.</i> 4000 Watt Delco Freedom. Included when Z82 Trailing Special or V10 Cold-Climate Package is specified.						
Without V8 engine	14	-2	UA1	N.A.	41.00	41.00
With V8 engine	2	0	UA1	N.A.	41.00	41.00
<b>Bumper Equipment:</b>						
<i>Bumpers, Chromed.</i> Front and Rear. Included when ZY3 Special Two-Tone Paint, ZY5 Exterior Decor Package or YE9 Silverado is specified.	0	0	V37	N.A.	58.00	58.00
<i>Bumpers, Deluxe Chromed.</i> Front and Rear. Not available when V31 Bumper Guards or V37 Bumpers are specified. Includes black resilient impact strips.						
Without YE9 Silverado, ZY3 Special Two-Tone Paint or ZY5 Exterior Decor Package	3	2	VE5	N.A.	96.00	96.00
With YE9 Silverado, ZY3 Special Two-Tone Paint or ZY5 Exterior Decor Package	3	2	VE5	N.A.	38.00	38.00
<i>Guards, Chromed, Front Bumper.</i> Available only when V37 Front and Rear Bumpers, ZY3 Special Two-Tone Paint, ZY5 Exterior Decor Package or YE9 Silverado is specified	10	-2	V31	N.A.	35.00	35.00
<b>Clock, Electric:</b> Not available when U16 Tachometer is specified.						
Without YE9 Silverado. Includes Z53 Voltmeter, Temperature and Oil Pressure Gages	1	0	U35	N.A.	59.00	59.00
With YE9 Silverado	1	0	U35	N.A.	28.00	28.00
<b>Cold-Climate Package:</b> Not available when C60 Air Conditioning or YF5 California Emissions are specified. Includes super heater and defroster, engine block heater and anti-freeze to -32 degrees.						
Without V8 engine. Also includes UA1 HD Battery	16	-2	V10	N.A.	149.00	149.00
With V8 engine						
Without Z82 Trailing Special. Also includes UA1 HD Battery and K77 55-Amp Generator	4	0	V10	N.A.	149.00	149.00
With Z82 Trailing Special	2	0	V10	N.A.	61.00	61.00

(a) D & H Charges on vehicle and optional equipment include reimbursement to Chevrolet Motor Division for any tax that it has paid, incurred or agreed to pay thereon.

◇ State and local taxes not included.

# BLAZER

## OPTIONS AND ACCESSORIES WHEN INSTALLED BY CHEVROLET

Prices shown are effective with vehicles produced on and after January 2, 1980

Description	Added Weight (F R)	Option Number	Factory D&H(a)	List Price	Mfr's Suggested Retail Price ◇
<b>OTHER OPTIONS</b>					
<b>Coolers:</b> Recommended for heavy duty trailering.					
Engine Oil. Available only when V8 engine is specified . . . . .	9 -1	KC4	N.A.	97.00	97.00
Transmission Oil. HD. Available only when C60 Air Conditioning or V01 HD Radiator, MX1 Automatic Transmission and V8 engine is specified. . . . .	5 -1	V02	N.A.	48.00	48.00
<b>Cooling:</b> Radiator, Heavy-Duty. Not available when C60 Air Conditioning is specified.					
Without V8 engine. . . . .	4 -1	V01	N.A.	43.00	43.00
With V8 engine . . . . .	8 -1	V01	N.A.	43.00	43.00
<b>Cover, Spare Tire:</b> Included when YE9 Silverado is specified	-1 3	P17	N.A.	27.00	27.00
<b>Door Lock System, Power:</b> Included when ZQ2 Operating Convenience Package is specified . . . . .	3 1	AU3	N.A.	100.00	100.00
<b>Emission Systems:</b>					
<i>California Emission Requirements: (See Power Teams Chart for availability and complete specifications) Includes all testing, equipment and /or certification necessary for registration in the State of California.</i>					
Without V8 engine. . . . .	22 0	YF5	N.A.	72.00	72.00
With V8 engine . . . . .	34 0	YF5	N.A.	72.00	72.00
<b>Standard Emission System.</b> Not available when YF5 California Emissions are specified. . . . .	0 0	NA5	NO ADDITIONAL CHARGE		
<b>Floor Covering:</b> Mats, Color-Keyed Front Floor . . . . .	4 3	B32	N.A.	12.00	12.00
<b>Gages:</b>					
<b>Voltmeter, Temperature and Oil Pressure.</b> Included when YE9 Silverado, U16 Tachometer or U35 Electric Clock is specified .					
<b>Tachometer.</b> Available only when V8 engine is specified. Not available when U35 Electric Clock is specified.	0 0	Z53	N.A.	31.00	31.00
Without YE9 Silverado. Includes Z53 Voltmeter, Temperature and Oil Pressure Gages . . . . .	1 0	U16	N.A.	93.00	93.00
With YE9 Silverado . . . . .	1 0	U16	N.A.	62.00	62.00
<b>Generators:</b>					
<b>55-Amp Delcotron.</b> Not available when Z82 Trailering Special is specified. Included when C60 Air Conditioning or V10 Cold Climate Package is specified. . . . .					
	0 0	K77	N.A.	47.00	47.00
<b>63-Amp Delcotron.</b> Included when Z82 Trailering Special is specified.					
Without C60 Air Conditioning or V10 Cold-Climate Package. . . . .	0 0	K81	N.A.	52.00	52.00
With C60 Air Conditioning or V10 Cold-Climate Package . . . . .	0 0	K81	N.A.	5.00	5.00
<b>Glass</b>					
<b>Sliding Side Window.</b> Available only when Z58 White or Z59 Black Hard Top is specified. . . . .					
	2 22	AD5	N.A.	188.00	188.00
<b>Tinted.</b> All Windows. . . . .					
	0 0	A01	N.A.	52.00	52.00
<b>Harness, Wiring:</b> Trailer, Heavy-Duty, 7-lead. . . . .					
	0 3	UY7	N.A.	35.00	35.00
<b>Headlamp Warning Buzzer.</b> . . . . .					
	0 0	T63	N.A.	9.00	9.00
<b>Headliner, Interior:</b> Full Length. Included when YE9 Silverado is specified. . . . .					
	3 4	BB5	N.A.	67.00	67.00
<b>Hood Lock Release:</b> Inside . . . . .					
	1 0	T44	N.A.	25.00	25.00
<b>Instrument Panel, Deluxe:</b> Available only when U35 Electric Clock, U16 Tachometer or Z53 Voltmeter, Temperature and Oil Pressure Gages are specified. Included when YE9 Silverado is specified. . . . .					
	0 0	BC3	N.A.	39.00	39.00
<b>Lighter, Cigarette:</b> Included when YE9 Silverado is specified					
	0 0	U37	N.A.	25.00	25.00
<b>Mirror, Visor:</b> Included when YE9 Silverado is specified . . . . .					
	1 0	D34	N.A.	6.00	6.00
<b>Mirrors, Exterior:</b> LH and RH					
<i>Below-Eye-Line Type. 9" x 6.5".</i>					
<i>Painted</i> . . . . .	9 3	D44	N.A.	40.00	40.00
<i>Stainless Steel</i> . . . . .	9 3	D45	N.A.	65.00	65.00
<i>Camper Type. 7.5" x 10.5". Stainless steel. Adjustable arm feature to provide field of vision for vehicles to 96" wide. Shipped loose for dealer installation. . . . .</i>					
	9 3	DF2	N.A.	76.00	76.00

(a) D & H Charges on vehicle and optional equipment include reimbursement to Chevrolet Motor Division for any tax that it has paid, incurred or agreed to pay thereon.

◇ State and local taxes not included.

# BLAZER

## OPTIONS AND ACCESSORIES WHEN INSTALLED BY CHEVROLET

Prices shown are effective with vehicles produced on and after January 2, 1980

Description	Added Weight (F R)	Option Number	Factory D&H(a)	List Price	Mfr's Suggested Retail Price◇
<b>OTHER OPTIONS</b>					
<b>Moldings:</b>					
<i>Body Side Spear.</i> Bright with black insert. Not available when ZY3 Special Two-Tone Paint, ZY5 Exterior Decor Package, YG1 Body Side Upper and lower Moldings, B85 Body Side Upper Moldings, YE9 Silverado or YG2 Wood-Grained Exterior Trim is specified.	3 3	B84	N.A.	66.00	66.00
<i>Body Side Upper.</i> Not available when YE9 Silverado, ZY3 Special Two-Tone Paint, ZY5 Exterior Decor Package, YG2 Wood-Grained Exterior Trim, B84 Body Side Spear Moldings or YG1 Body Side Upper and Lower Moldings are specified. Includes fender, door, rear side panel and tailgate moldings plus bright front turn signal, front side marker and taillight trim	2 3	B85	N.A.	71.00	71.00
<i>Body Side Upper and Lower.</i> Not available when B84 Body Side Spear Moldings or B85 Body Side Upper Moldings are specified. Included when YE9 Silverado, ZY3 Special Two-Tone Paint, ZY5 Exterior Decor Package or YG2 Wood-Grained Exterior Trim is specified. Includes B96 Wheel Opening Moldings	4 5	YG1	N.A.	168.00	168.00
<i>Guards, Door Edge.</i> Not available when YG2 Wood-Grained Exterior Trim, ZY3 Special Two-Tone Paint or ZY5 Exterior Decor Package is specified	0 0	B93	N.A.	13.00	13.00
<i>Wheel Opening.</i> Included when YG1 Body Side Upper and Lower Moldings, YG2 Wood-Grained Exterior Trim, YE9 Silverado, ZY3 Special Two-Tone Paint or ZY5 Exterior Decor Package is specified.	1 1	B96	N.A.	25.00	25.00
<b>Operating Convenience Package:</b> Includes AU3 Power Door Lock System and A31 Power Windows.	12 7	ZQ2	N.A.	248.00	248.00
<b>Paints, Exterior:</b> See Interior and Exterior Color Selection Chart for ordering information					
<i>Solid.</i>	0 0	ZY1	NO ADDITIONAL CHARGE		
<i>Special Two-Tone.</i> Area between upper and lower side moldings painted secondary color. Not available when YG2 Wood-Grained Exterior Trim is specified.					
Without YE9 Silverado. Includes V37 Front and Rear Chromed Bumpers, YG1 Body Side Upper and Lower Moldings and B96 Wheel Opening Moldings	3 4	ZY3	N.A.	334.00	334.00
With YE9 Silverado	0 0	ZY3	N.A.	108.00	108.00
<i>Exterior Decor Package.</i> Includes hood ornament and hood accent stripes. Roof, hood and area between upper and lower side moldings are painted secondary color. Refer to interior trim and exterior color charts for availability.					
Without YE9 Silverado. Also includes V37 Front and Rear Chromed Bumpers, YG1 Body Side Upper and Lower Moldings and B96 Wheel Opening Moldings	3 4	ZY5	N.A.	452.00	452.00
With YE9 Silverado	0 0	ZY5	N.A.	226.00	226.00
<b>Radio Equipment:</b>					
<i>AM Radio.</i>	6 1	U63	N.A.	97.00	97.00
<i>AM /FM Radio.</i>	6 1	U69	N.A.	153.00	153.00
<i>AM /FM Stereo Radio.</i> Available only when YE9 Silverado is specified.	14 3	U58	N.A.	242.00	242.00
<i>AM /FM Stereo Radio with 8 Track Stereo Tape.</i> Available only when YE9 Silverado is specified	14 6	UM2	N.A.	345.00	345.00
<i>AM /FM Stereo Radio with Stereo Cassette Tape.</i> Available only when YE9 Silverado is specified	13 4	UN3	N.A.	351.00	351.00
<i>AM /FM /Citizens Band Radio with Triband Mast Antenna.</i> Available only when YE9 Silverado and U80 Rear Seat Speaker are specified.	8 2	UP5	N.A.	454.00	454.00
<i>Speaker, Rear Seat.</i> Available only when U63 AM Radio, U69 AM /FM Radio or UP5 AM /FM /Citizens Band Radio and YE9 Silverado are specified	0 2	U80	N.A.	20.00	20.00
<i>Windshield Antenna.</i> Included when U63, U69, U58, UM2 or UN3 Radio is specified. Not available when UP5 Radio is specified.	0 0	U76	N.A.	29.00	29.00
<b>Roll Bar: Rear.</b>	14 27	E50	N.A.	112.00	112.00
<b>Seats:</b> Dealer Note - AM7 Rear Seat or YG4 rear seat not desired must be specified. (Added weight includes passenger weight allowance of 150-lbs per seating position).					

(a) D & H Charges on vehicle and optional equipment include reimbursement to Chevrolet Motor Division for any tax that it has paid, incurred or agreed to pay thereon.  
◇ State and local taxes not included.



# BLAZER

## OPTIONS AND ACCESSORIES WHEN INSTALLED BY CHEVROLET

Prices shown are effective with vehicles produced on and after January 2, 1980

Description	Added Weight (F R)	Option Number	Factory D&H(a)	List Price	Mfr's Suggested Retail Price◇
<b>OTHER OPTIONS</b>					
<b>Seats: (Continued)</b>					
<i>Rear, 3-Passenger. Forward Folding. Seat trim matches front seat. Includes LH and RH rear armrests with ashtrays, floor covering, floor insulation and (3) seat belts. With standard front seat also includes black embossed rubber rear floor mats. With custom seats or YE9 Silverado also includes color-keyed rear floor carpeting.</i>					
Without Custom Trim	51 482	AM7	N.A.	277.00	277.00
With Custom Trim. Also includes wheelhouse carpeting	51 482	AM7	N.A.	300.00	300.00
<i>Optional Seat Not Desired.</i>	0 0	YG4		NO ADDITIONAL CHARGE	
<b>Seat Trim:</b> Highback buckets. See Interior and Exterior Color Selection Chart for availability and ordering information.					
<i>Vinyl Bucket Seats, Driver and Passenger Not available when YE9 Silverado is specified.</i>					
<i>Custom Vinyl, Driver and Passenger. Includes color-keyed carpeting.</i>	0 0			NO ADDITIONAL CHARGE	
Without YE9 Silverado.					
Without AM7 Rear Seat	0 0		N.A.	167.00	167.00
With AM7 Rear Seat	0 0		N.A.	210.00	210.00
With YE9 Silverado.					
Without AM7 Rear Seats	0 0			NO ADDITIONAL CHARGE	
With AM7 Rear Seats	0 0		N.A.	43.00	43.00
<i>Custom Cloth, Driver and Passenger. Available only when YE9 Silverado is specified.</i>					
Without AM7 Rear Seat	0 0			NO ADDITIONAL CHARGE	
With AM7 Rear Seat	0 0		N.A.	43.00	43.00
<b>Shield, Fuel Tank:</b>					
C10 series only	-6 33	NY1	N.A.	104.00	104.00
K10 series only. Includes transfer case skid plate	8 46	NY1	N.A.	139.00	139.00
<b>Shock Absorbers: Front and Rear, Heavy-Duty. C10 series only</b>					
<b>Speed Control: Automatic.</b> Available only when V8 engine and MX1 Automatic Transmission are specified.	6 0	K30	N.A.	106.00	106.00
<b>Springs: Front, Heavy-Duty.</b> Capacity 2250-lb each. K10 series only. Includes HD front and rear shock absorbers. Recommended for snowplow type usage only.					
	28 1	F60	N.A.	76.00	76.00
<b>Stabilizer Bar: Front. 1" diameter. C10 series only.</b>					
	20 0	F59	N.A.	28.00	28.00
<b>Steering, Power:</b> Standard on K10 series. Included when Z82 Trailing Special is specified on C10 series.					
Without V8 engine	35 0	N41	N.A.	211.00	211.00
With V8 engine	29 0	N41	N.A.	211.00	211.00
<b>Steering Wheels:</b>					
<i>Comfortilt. Available only when optional transmission is specified.</i>					
With MM4 4-speed transmission	3 1	N33	N.A.	83.00	83.00
With MX1 Automatic Transmission	2 0	N33	N.A.	83.00	83.00
<i>Custom. Included when YE9 Silverado is specified.</i>	0 0	N31	N.A.	16.00	16.00
<b>Tank, Fuel:</b> Approximately 31-gallon capacity. Replaces production fuel tank					
	-7 48	NK7	N.A.	35.00	35.00
<b>Tires:</b> See following pages.					
<b>Towing Device:</b> Two front towing hooks. K10 series only					
	11 -2	V76	N.A.	32.00	32.00
<b>Trailer Hitch:</b>					
<i>Deadweight Type.</i>	-10 36	VR2	N.A.	46.00	46.00
<i>Weight Distributing Platform Type</i>	-16 61	VR4	N.A.	130.00	130.00
<b>Trailing Special:</b> Available only when V8 engine and optional transmission, V01 HD Radiator or C60 Air Conditioning are specified. Includes UA1 HD Battery, K81 63-Amp Generator and Trailing Special nameplate.					
C10 series only. Also includes N41 Power Steering.					
Without C60 Air Conditioning or V10 Cold-Climate Package.	31 0	Z82	N.A.	304.00	304.00
With C60 Air Conditioning or V10 Cold-Climate Package	31 0	Z82	N.A.	257.00	257.00

(a) D & H Charges on vehicle and optional equipment include reimbursement to Chevrolet Motor Division for any tax that it has paid, incurred or agreed to pay thereon.

◇ State and local taxes not included.

# BLAZER

## OPTIONS AND ACCESSORIES WHEN INSTALLED BY CHEVROLET

Prices shown are effective with vehicles produced on and after January 2, 1980

Description	Added Weight (F R)		Option Number	Factory D&H(a)	List Price	Mfr's Suggested Retail Price◇
<b>OTHER OPTIONS</b>						
<b>Trailer Special: (Continued)</b>						
K10 series only.						
Without C60 Air Conditioning or V10 Cold-Climate Package.	2	0	Z82	N.A.	93.00	93.00
With C60 Air Conditioning or V10 Cold-Climate Package.	2	0	Z82	N.A.	46.00	46.00
<b>Wheel Trim: Bright Metal.</b>						
Trim Rings. Included when N67 Rally Wheels are specified	2	2	P06	N.A.	46.00	46.00
<b>Wheel Covers.</b>						
C10 series only.	1	1	P01	N.A.	25.00	25.00
K10 series only. Front units contain hub clearance holes.	3	3	P01	N.A.	25.00	25.00
<b>Wheels:</b>						
<i>Aluminum, Forged 15" x 7". Available only when P235 /75R-15 tires are specified.</i>						
C10 series only.	-2	-2	PH7	N.A.	370.00	370.00
K10 series only.	-7	6	PH7	N.A.	370.00	370.00
Rally. 15" x 6". Includes special hub caps and P06 Trim Rings.	3	4	N67	N.A.	90.00	90.00
Styled. 15" x 6".	1	2	PA6	N.A.	181.00	181.00
<b>Windows, Power: Electric</b>						
Side Door. Included when ZQ2 Operating Convenience is specified.	9	6	A31	N.A.	148.00	148.00
Tailgate. Available only when Z58 White or Z59 Black Hard Top is specified.	-3	10	A33	N.A.	69.00	69.00
<b>Windshield Wiper System: Intermittent</b>	1	0	CD4	N.A.	35.00	35.00
<b>Wood-Grained Exterior Trim:</b> Available only when Z58 White or Z59 Black Hard Top is specified. Not available when ZY3 Special Two-Tone Paint or ZY5 Exterior Decor Package is specified. Includes bright Chevrolet nameplate.						
Without YE9 Silverado. Includes YG1 Body Side Upper and Lower Moldings and B96 Wheel Opening Moldings.	4	5	YG2	N.A.	315.00	315.00
With YE9 Silverado	0	0	YG2	N.A.	147.00	147.00

(a) D & H Charges on vehicle and optional equipment include reimbursement to Chevrolet Motor Division for any tax that it has paid, incurred or agreed to pay thereon.  
 ◇ State and local taxes not included.

# BLAZER

## FACTORY INSTALLED TIRES

See Tire Chart for Available Front/Rear Combinations.  
Spare tire available to match either front or rear tires.  
Prices shown are effective with vehicles produced on and after January 2, 1980

Tire Size and Type	Rim Width Included In Tire Option	Added Weight (F) (R)		Option Number	Factory D&H(a)	List Price	Mfr's Suggested Retail Price ◇
<b>Tires</b>							
<b>C-K10 series</b>							
<i>P215 /75R15 Highway Steel Belted Radial Blackwall</i> (Maximum Capacity 1583 lbs.)							
Front (Standard)	6.00	0	0	XKT			NO ADDITIONAL CHARGE
Rear (Standard)	6.00	0	0	YKT			NO ADDITIONAL CHARGE
Spare (Standard)	6.00	0	0	ZKT			NO ADDITIONAL CHARGE
<i>P215 /75R15 Highway Steel Belted Radial White Stripe</i> (Maximum Capacity 1583 lbs.)							
Front	6.00	0	0	XKU	N.C.	22.00	22.00
Rear	6.00	0	0	YKU	N.C.	22.00	22.00
Spare	6.00	0	0	ZKU	N.C.	11.00	11.00
<i>P235 /75R15 Highway Steel Belted Radial Blackwall</i> (Maximum Capacity 1843 lbs.)							
Front							
C10 only	6.00	9	0	XBD	.60	36.00	36.60
K10 only	6.00	6	0	XBD	.60	36.00	36.60
Rear							
C10 only	6.00	0	9	YBD	.60	36.00	36.60
K10 only	6.00	0	6	YBD	.60	36.00	36.60
Spare	6.00	-1	5	ZBD	.30	18.00	18.30
<i>P235 /75R15 On-Off Road Steel Belted Radial Blackwall</i> (Maximum Capacity 1843 lbs.)							
Front. K10 only	6.00	0	0	XQJ	.76	50.00	50.76
Rear							
C10 only	6.00	0	15	YQJ	.76	50.00	50.76
K10 only	6.00	0	12	YQJ	.76	50.00	50.76
Spare	6.00	-1	9	ZQJ	.38	25.00	25.38
<i>P235 /75R15 Highway Steel Belted Radial White Stripe</i> (Maximum Capacity 1843 lbs.)							
Front							
C10 only	6.00	9	0	XBJ	.60	64.00	64.60
K10 only	6.00	6	0	XBJ	.60	64.00	64.60
Rear							
C10 only	6.00	0	9	YBJ	.60	64.00	64.60
K10 only	6.00	0	6	YBJ	.60	64.00	64.60
Spare	6.00	-1	5	ZBJ	.30	32.00	32.30
<i>P235 /75R15 Highway Steel Belted Radial White Lettered</i> (Maximum Capacity 1843 lbs.)							
Front							
C10 only	6.00	9	0	XWV	.60	72.00	72.60
K10 only	6.00	6	0	XWV	.60	72.00	72.60
Rear							
C10 only	6.00	0	9	YWV	.60	72.00	72.60
K10 only	6.00	0	6	YWV	.60	72.00	72.60
Spare	6.00	-1	5	ZWV	.30	36.00	36.30

(a) D & H Charges on vehicle and optional equipment include reimbursement to Chevrolet Motor Division for any tax that it has paid, incurred or agreed to pay thereon.

◇ State and local taxes not included.

# NOTES

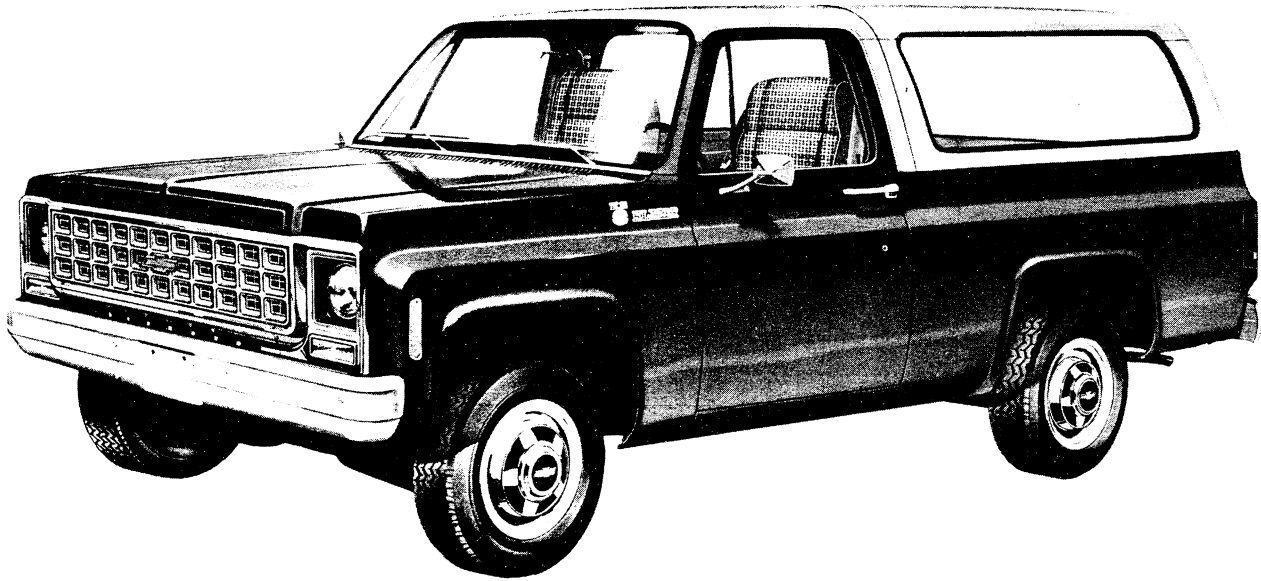
# **BLAZER**

**CAB & BODY FEATURES  
SEATING ARRANGEMENTS  
CAB DIMENSIONS  
COLOR & TRIM CHARTS  
TWO-TONES**

# BLAZER

## CUSTOM DELUXE FEATURES—STANDARD MODEL

The Custom Deluxe standard models include the following items as standard equipment



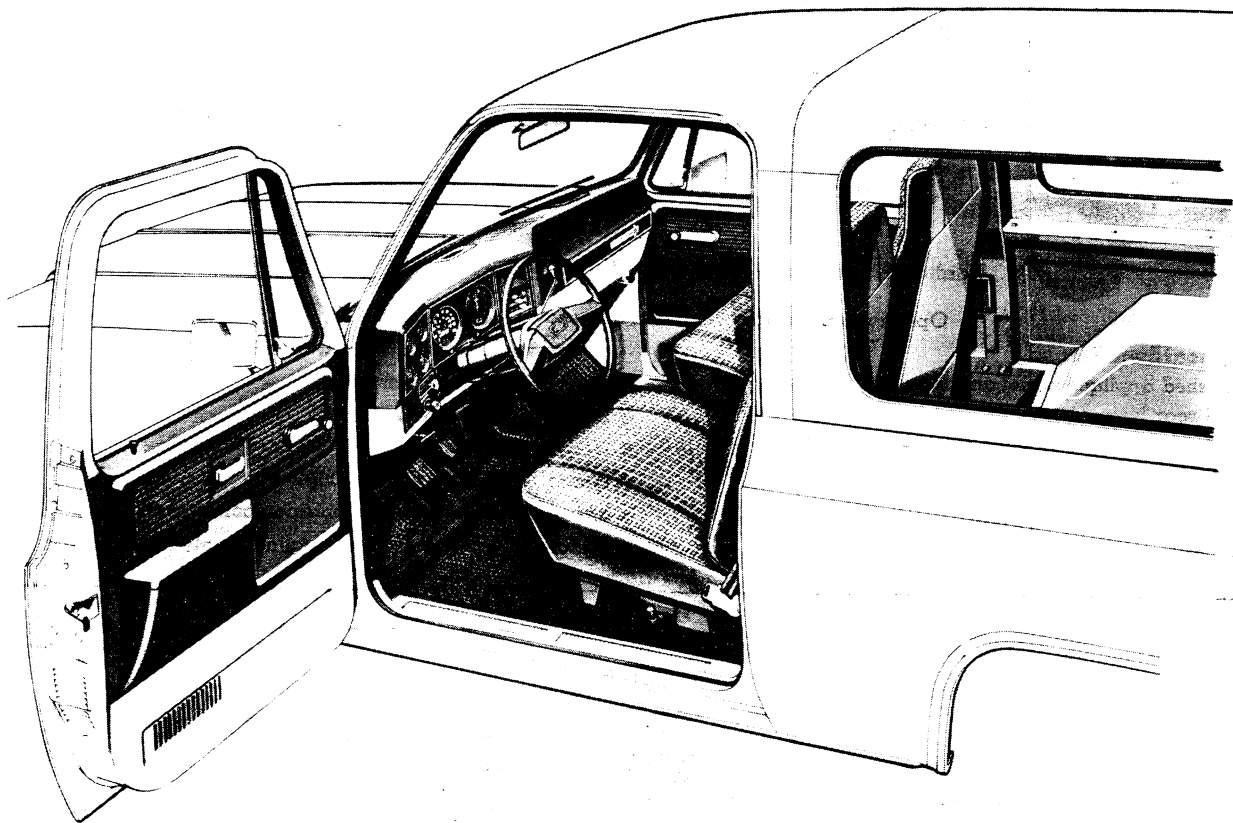
### EXTERIOR

- **Bumpers:** Front and rear; painted white
- **Color:** See Interior and Exterior Color Selection Chart
- **Doors:** RH and LH side doors
- **Drip Moldings:** Over side doors; painted roof color
- **Grille:** Molded plastic; painted argent; integral Chevrolet emblem at center includes bright insert with ochre trim
- **Grille Frame:** Bright headlamp/parking lamp bezels plus bright upper and lower moldings joining extensions of lamp bezels; dark gray painted bezel centers in headlamp area
- **Horn:** Single, electric low-note
- **Hub Caps:** Bright metal with black and ochre trim
- **Keys:** Two-key system with separate keys for ignition switch and doors
- **Lights:**
  - Backup lamps: Two rear (integral with taillamps)
  - Combination parking/direction/hazard: Two front
  - Combination tail/stop/direction/hazard: Two rear
  - Headlamps: Two; Power Beam
  - License plate lamp: Single rear
  - Side marker lamps with reflectors: Two front; two rear (integral with taillamps)
- **Mirrors:** RH and LH fixed arm with adjustable 5½" x 4" head; chrome finish
- **Moldings:** Bright decorative molding at hood rear edge
- **Nameplates:** Bright "K5 Blazer" nameplates on upper portions of front fenders near doors; and a bright "Chevrolet" nameplate on tailgate (except convertible top models)
- **Removable Top:** (Hardtop models only) Constructed of molded plastic reinforced with fiber glass. Included are LH and RH fixed side windows. The exterior of the top is finished with textured black or white paint (cab roof also finished in same manner)
- **Convertible Top:** (Convertible models only) Made with vinyl-coated fabric, which is stain- and mildew-resistant, and sewn with long-lasting nylon thread. Top has a structural foam header where it seals with the cab roof panel. It can be used with the side and rear panels rolled up or entire top can be folded down. Steel hardware with aluminum extrusions for the siderails. The cab roof is finished in white textured paint to match the convertible top color
- **Tailgate:** Hardtop models: double-wall steel construction, supported in open position by reel-type cables. Includes drop glass operated by an articulated crank-type regulator handle on the tailgate outer panel. A key lock cylinder is concealed in the regulator handle, and must be unlocked before the window can be lowered. After the window is lowered, the tailgate is released with a handle located at the upper center of the inner panel. An optional electric tailgate window is available (RPO A33). Convertible models: same tailgate as that used on Fleetside pickups
- **Tools:** Mechanical jack and wheel wrench
- **Wheels:** Painted white
- **Windshield Wipers and Washers:** Electric, 2-speed wipers with matte finish on exposed metal portions; partially concealed arms; coordinated dual-orifice washers

# BLAZER

## CUSTOM DELUXE FEATURES—STANDARD MODEL

The Custom Deluxe standard models include the following items as standard equipment



### INTERIOR

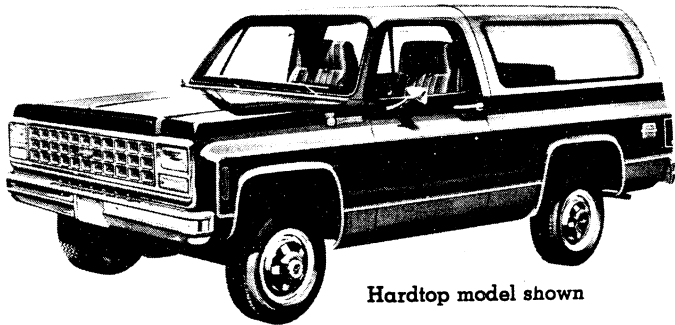
- **Armrests:** RH and LH padded; integral with door trim panels
- **Ashtray:** In middle of instrument panel
- **Coat Hooks:** Two; on LH side (Hardtop models only)
- **Colors:**
  - Painted body areas: Same as exterior primary color choice
  - Removable top: Mystic
  - Interior trim: Coordinated with seat trim color choice
- **Dome Lamps:** Two (Hardtop models only); one (convertible models only); with door-actuated switches (dome lamps may also be activated by main light switch)
- **Door Trim Panels:** Color-keyed, molded plastic
- **Floor Covering:** Embossed black rubber mats; front and rear
- **Heater and Defogger:** Deluxe-air; automatic blower operation with ignition switch on for power ventilation system
- **Instrument Cluster Bezel:** Black with bright trim
- **Instruments:**
  - Gages: Speedometer, odometer, and fuel
  - Switches: Main, for control of exterior lights, instrument cluster lights, dome light(s) and cab interior lights; wiper-washer; headlamp beam (foot); ignition; direction signal (with lane change position); hazard warning; heater fan
  - Warning lights: Generator, oil pressure, engine temperature, service-parking brake, direction/hazard signal, seat belt, high beam
- **Instrument Panel Control Knobs:** Soft black plastic with white graphic identification (except heater and wiper-washer controls)
- **Instrument Panel Pad:** Color-keyed, energy-absorbing foam type with grained vinyl skin; has bright applique on RH side with black insert, black trim and bright "Custom Deluxe" nameplate
- **Insulation and Sound Deadening Material:** Dash (firewall), under floor mats, and between inner and outer cab roof panels
- **Lights:** Instrument cluster and cab interior lights, cab and removable top dome lights with bright trim
- **Mirror, Rearview:** 10" prismatic with soft vinyl rim
- **Seats:** Driver and passenger; foam-padded high back bucket type with houndstooth pattern vinyl trim. See Interior and Exterior Color Selection Chart for color availability
- **Seat Belt:** Driver and passenger; non-detachable combination lap and shoulder belt with emergency-locking retractor and switch in driver's lap belt retractor for buzzer warning system. Belt assembly is color-keyed with pushbutton type buckle
- **Sill Plates:** Full-length, bright, at front doors and at front and rear of rear compartment floor
- **Spare Tire Mounting:** On RH side panel behind wheelhouse
- **Steering Wheel and Column:** 16" black soft plastic wheel with 2-spoke design; black energy-absorbing steering column with anti-theft locking feature
- **Stowage Box:** In RH side of instrument panel; door has bright, turn-type latch release
- **Sunshade:** LH and RH padded; color-keyed

# BLAZER

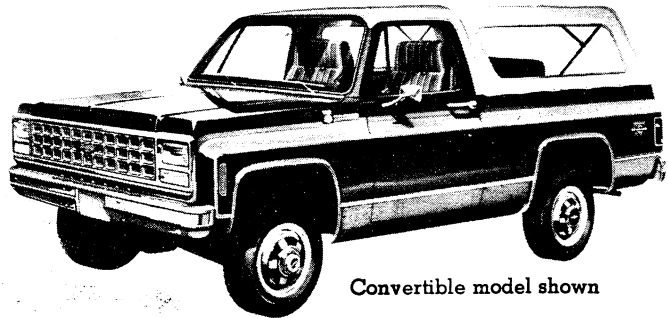
## SILVERADO MODEL OPTION—RPO YE9

This option includes all Custom Deluxe standard model items plus the additions or substitutions listed below

### EXTERIOR



Hardtop model shown



Convertible model shown

Optional 3-passenger rear seat also shown in illustration

#### ● Bright Appearance Items:

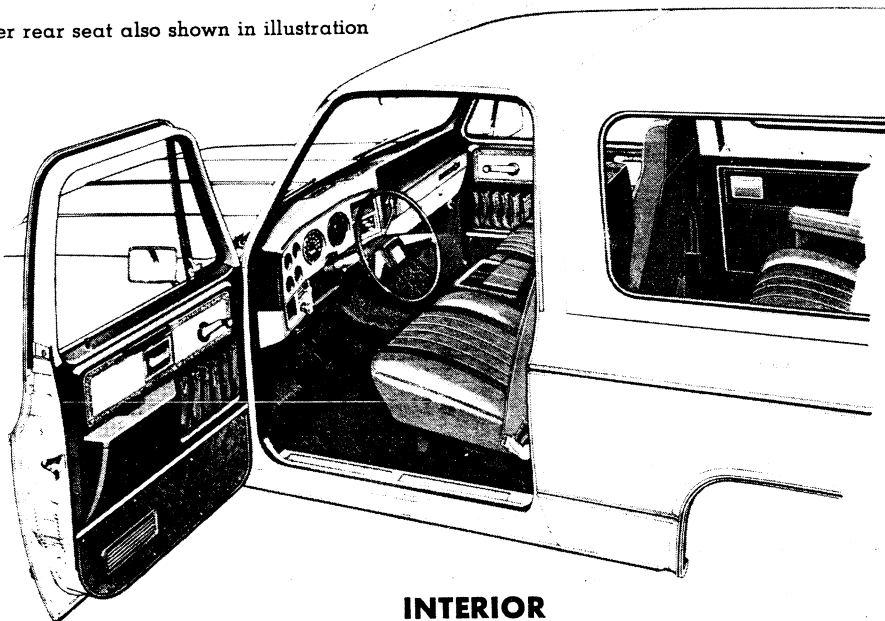
- Brush-finished applique panel on tailgate
- Front and rear bumpers
- "Silverado" nameplate on each side panel at center rear
- Upper and lower body side and tailgate moldings, plus wheel-opening lip moldings
- Front side marker lamp, and taillamp trim
- Chromed grille insert

- Removable top side window moldings
- Windshield reveal molding

#### ● Body-to-Fender Insulators

- Hood Insulator
- Horn: Additional, electric, high-note
- Secondary Door Seals: On side door upper frames
- Special Headlamps: Rectangular; single RH and LH

Optional 3-passenger rear seat also shown in illustration



### INTERIOR

#### ● Bright Appearance Items:

- "Silverado" nameplate on instrument panel pad
- Four-speed transmission shift lever
- Transfer case shift lever (conventional 4-wheel-drive models)
- Trim on instrument cluster bezel, instrument panel pad applique, interior trim panels and on horn button
- Cigar Lighter: Includes ashtray light
- Colors: Choice of single or two-tone interior color scheme
- Console: Color-keyed molded plastic with bright trim and storage/beverage pockets
- Cowl Trim: Color-keyed molded plastic on cowl side panels
- Floor Covering: Color-keyed front compartment carpeting (matching rear compartment floor covering, including wheel housings, also provided with optional rear seat)
- Headliner: Front compartment; Mystic color hardboard-backed foam rubber with perforated vinyl skin; includes matching windshield pillar and retainer moldings

- Instrument Cluster: Voltmeter, oil pressure gage, and engine temperature gage replace warning lamps; includes bright brush-finished bezel
- Seats: Choice of: 1) all-vinyl brahman grain trim; or 2) hounds-tooth pattern nylon cloth and vinyl trim. See Interior and Exterior Color Selection Chart for color availability
- Spare Tire Cover: Black vinyl
- Special Insulation: Extra-thick floor insulators (including rear compartment floor and wheelhousings with optional rear seat) plus insulator under cowl top panel
- Steering Wheel: Bright trim on horn button
- Trim Panels: Molded, color-keyed plastic front door trim panels with vinyl storage pockets, door closing assist straps, bright brush-finished inserts having bright borders with tooled leather pattern plus carpeting and bright trim strips on lower portions. Color-keyed embossed vinyl rear compartment sidewall trim panels with ashtrays and bright trim
- Visor Mirror: On RH sun visor



## **BLAZER OPTIONAL SEATS**

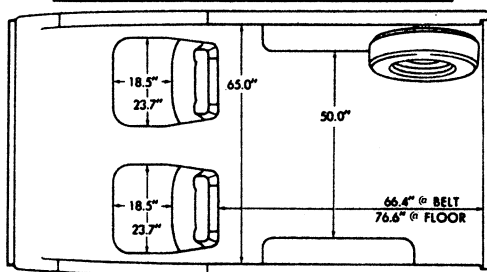
The driver and front passenger seats for Custom Deluxe (standard) models are available with optional all-vinyl brahman grain trim in a choice of blue, carmine or camel tan. This option includes a color-keyed plastic floor console between the seats, color-keyed front carpeting and extra-thick front floor insulation.

When the single-tone interior is stipulated for the Silverado Model Option (RPO YE9), a choice of either brahman grain all-vinyl trim in blue, camel tan or carmine or houndstooth pattern cloth and vinyl trim in camel tan or carmine is provided. When the optional two-tone interior is ordered for Silverado models, all seats are trimmed with either all-vinyl or houndstooth pattern cloth and vinyl trim in mystic color only; door

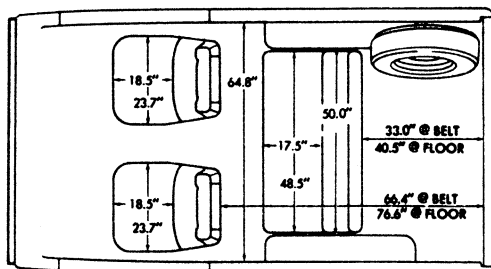
trim panel assemblies, headliner and related garnish moldings and sun visors are also mystic, with other components in blue, carmine or camel tan.

A three-passenger folding rear seat with armrests (RPO AM7) is available for all models. Seat belts are provided at all seating positions, with outboard units incorporating retractors. LH and RH ashtrays mounted to the sidewalls also are provided. The seat trim and floor covering match those of the front compartment, and rear wheelhouse insulation and carpeting are included when the brahman grain all-vinyl front seats or houndstooth pattern cloth and vinyl front seats are ordered.

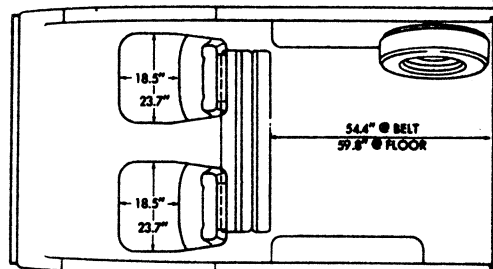
### **SEATING ARRANGEMENTS**



**Standard front driver and passenger bucket seats**

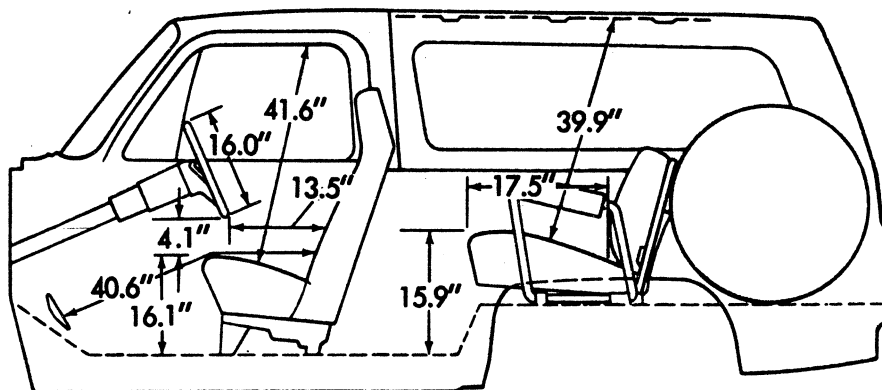


**Front and 3-passenger rear seat**



**Front and 3-passenger rear seat  
(rear seat shown in folded position)**

### **DIMENSIONS**



**Glass Area (sq. in.)**

**Windshield..... 1447**  
**Side door, including venti-  
pane (each side)..... 546**

**Removable top side win-  
dow (each side)..... 894**  
**Tailgate drop glass (Hard  
top models)..... 1077**

# SINGLE TONE INTERIOR

## BLAZER

### INTERIOR AND EXTERIOR COLOR AVAILABILITY CHART

**Please Note:** Exterior and interior paint combinations shown in chart below are those recommended by Chevrolet. Any exterior color combination may be ordered with any available seat trim if the particular combination is desired by a customer.

SEAT TRIM			MODEL OPTION		SEAT TRIM COLORS AND ORDERING CODES		
Fabric	▲Code	Type	Custom Deluxe	Silverado YE9	Blue	Carmine■	Camel Tan
Standard Vinyl	V	Bucket	X		VDD4	—	VCC4
Custom Vinyl	W	Bucket	X	X	XDD4	XRR4	XCC4
Custom Cloth	H	Bucket		X	—	KRR4	KCC4
♦EXTERIOR COLORS			Primary	Secondary	RECOMMENDED INTERIOR TRIM COLORS		
<b>FROST WHITE</b>			12	12	X	X	X
Mystic Silver			12	17	X	X	
Medium Blue			12	23*	X		
Santa Fe Tan			12	60*			X
Dark Carmine Red			12	71*		X	
Midnight Black			12	86	X	X	
<b>MYSTIC SILVER (Metallic)</b>			17	17	X	X	
Frost White			17	12*	X	X	
Midnight Black			17	86**	X	X	
<b>CHARCOAL (Metallic)</b>			18	18	X	X	
Frost White			18	12*	X	X	
Mystic Silver			18	17**	X	X	
Midnight Black			18	86**	X	X	
<b>MEDIUM BLUE</b>			23	23	X		
Frost White			23	12*	X		
Mystic Silver			23	17*	X		
<b>LIGHT BLUE METALLIC</b>			25	25	X		
Frost White			25	12*	X		
Medium Blue			25	23*	X		
<b>NORDIC BLUE METALLIC</b>			30	30	X		
Frost White			30	12*	X		
<b>EMERALD GREEN</b>			43	43			X
Frost White			43	12*			X
<b>SANTA FE TAN</b>			60	60			X
Frost White			60	12*			X
<b>DARK CAMEL METALLIC</b>			62	62			X
Frost White			62	12*			X
<b>CAMEL METALLIC</b>			65	65			X
Frost White			65	12*			X
<b>CARMINE RED</b>			70	70		X	X
Frost White			70	12*		X	X
<b>DARK CARMINE RED</b>			71	71		X	X
Frost White			71	12*		X	X
<b>CARDINAL RED</b>			73	73		X	X
Frost White			73	12*		X	X
<b>MIDNIGHT BLACK</b>			86	86	X	X	X
Frost White			86	12	X	X	
Mystic Silver			86	17**	X	X	
Santa Fe Tan			86	60**			X
<b>BURNT ORANGE METALLIC</b>			95	95			X
Frost White			95	12*			X

♦ Primary color shown in **BOLDFACE TYPE**; Secondary colors shown in Lightface Type.

▲ Seat Trim Codes: V—Houndstooth Pattern Vinyl; W—Brahman Grained Vinyl; H—Houndstooth Pattern Cloth.

■ Available with Silverado only.

\* Not available with black tops.

\*\*Not available with white tops.

**SEE PAGE H FOR ZY5 EXTERIOR DECOR PACKAGE ILLUSTRATION**

## TWO-TONE INTERIOR

# BLAZER

## INTERIOR AND EXTERIOR COLOR AVAILABILITY CHART

**Please Note:** Exterior and interior paint combinations shown in chart below are those recommended by Chevrolet. Any exterior color combination may be ordered with any available interior color or seat trim if the particular combination is desired by a customer.

SEAT TRIM			MODEL OPTION		SEAT TRIM COLOR AND ORDERING CODE		
Fabric	▲Code	Type	Silverado YE9		Mystic	Mystic	Mystic
Custom Vinyl	W	Bucket	X		XMD4	XMR4	XMC4
Custom Cloth	H	Bucket	X		KMD4	KMR4	
EXTERIOR COLOR				TWO-TONE INTERIOR COLOR			
Primary Colors and Available Secondary Colors ♦			Primary Code	Secondary Code	Blue and Mystic	Carmine and Mystic	Camel and Mystic
<b>FROST WHITE</b>			12	12	X	X	X
Mystic Silver			12	17	X	X	
Medium Blue			12	23*	X		
Santa Fe Tan			12	60*			X
Dark Carmine Red			12	71*		X	
Midnight Black			12	86	X	X	
<b>MYSTIC SILVER (Metallic)</b>			17	17	X	X	
Frost White			17	12*	X	X	
Midnight Black			17	86**	X	X	
<b>CHARCOAL (Metallic)</b>			18	18	X	X	
Frost White			18	12*	X	X	
Mystic Silver			18	17**	X	X	
Midnight Black			18	86**	X	X	
<b>MEDIUM BLUE</b>			23	23	X		
Frost White			23	12*	X		
Mystic Silver			23	17*	X		
<b>LIGHT BLUE METALLIC</b>			25	25	X		
Frost White			25	12*	X		
Medium Blue			25	23*	X		
<b>NORDIC BLUE METALLIC</b>			30	30	X		
Frost White			30	12*	X		
<b>EMERALD GREEN</b>			43	43			
Frost White			43	12*			
<b>SANTA FE TAN</b>			60	60			X
Frost White			60	12*			X
<b>DARK CAMEL METALLIC</b>			62	62			X
Frost White			62	12*			X
<b>CAMEL METALLIC</b>			65	65			
Frost White			65	12*			
<b>CARMINE RED</b>			70	70		X	
Frost White			70	12*		X	
<b>DARK CARMINE RED</b>			71	71		X	
Frost White			71	12*		X	
<b>CARDINAL RED</b>			73	73		X	
Frost White			73	12*		X	
<b>MIDNIGHT BLACK</b>			86	86	X	X	
Frost White			86	12	X		
Mystic Silver			86	17**	X		
Santa Fe Tan			86	60**			
<b>BURNT ORANGE METALLIC</b>			95	95			
Frost White			95	12*			

♦ Primary color shown in **BOLDFACE TYPE**; secondary colors shown in Lightface Type.

▲ Seat Trim Codes: W—Brahman Grain Vinyl; H—Houndstooth Pattern Cloth.

\* Not available with black tops.

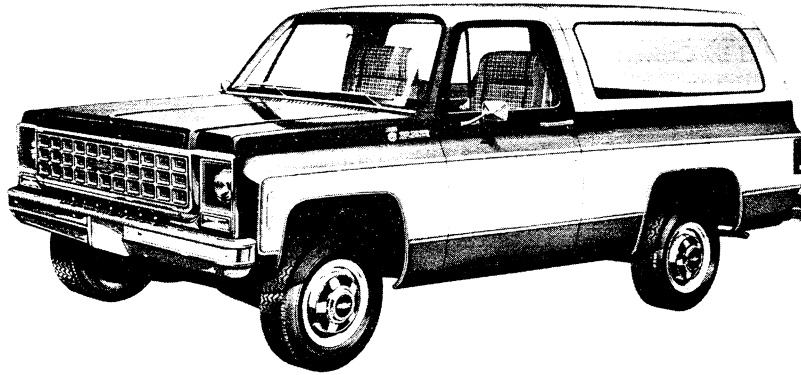
\*\*Not available with white tops.

**SEE PAGE H FOR ZY5 EXTERIOR DECOR PACKAGE ILLUSTRATION**

1980

# BLAZER

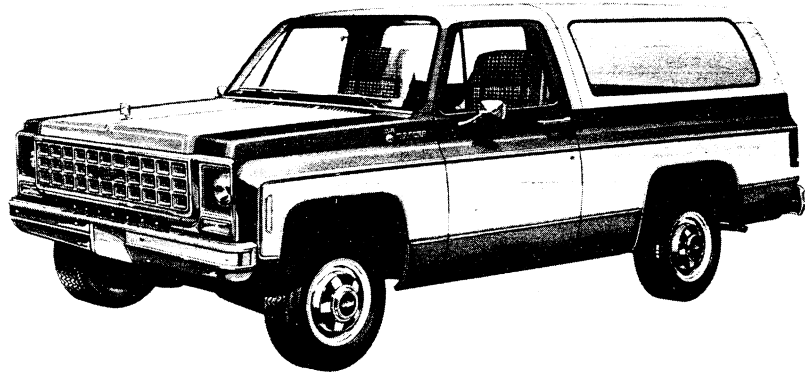
## TWO-TONE EXTERIOR COLOR COMBINATIONS\*



### SPECIAL TWO-TONE

**Special two-tone (ZY3)** paint colors are available on all models. Custom upper and lower moldings are included (except with the Silverado Model Option where they are already included). The areas between the moldings are painted the secondary color.

All other painted areas of the vehicle body and front end sheet metal are painted the primary body color, except the front cab roof, including the drip rails, is painted with white or black textured paint. (See Interior and Exterior Color Availability Charts to determine cab roof and top colors.)



### EXTERIOR DECOR PACKAGE

**Exterior Decor Package (ZY5)** paint colors and trim are available in a choice of six combinations (see chart below). This package includes all the molding and paint described under Special Two-tone. In addition, it includes the secondary paint color on the hood with color-coordinated striping at either side of the hood panel, plus a bright spring-loaded, stand-up type hood emblem.

PRIMARY COLOR	CODE	SECONDARY COLOR	CODE	INTERIOR COLOR	HOOD STRIPE COLOR	TOP COLOR
Frost White	12	Dark Carmine Red	71	Carmine	Yellow to Orange	White
Mystic Silver (M)	17	Midnight Black	86	Mystic	Orange to Red	Black
Nordic Blue (M)	30	Frost White	12	Blue	Blues	White
Dark Camel (M)	62	Frost White	12	Camel Tan	Brown to Gold	White
Midnight Black	86	Mystic Silver	17	Carmine	Orange to Red	Black
Midnight Black	86	Santa Fe Tan	60	Camel Tan	Brown to Gold	Black

(M) Metallic.