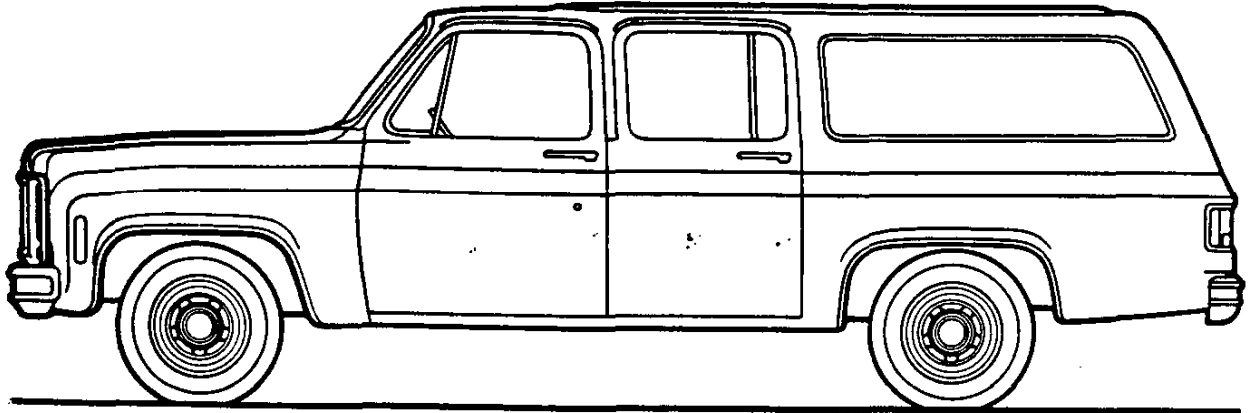


ORIGINAL
1980
SUBURBAN

SUBURBAN MODEL SELECTOR



| Series | Model Number | Body Ordering Code | |
|-------------------------------|--------------|--------------------|-----------|
| | | Panel Rear Doors | Endgate |
| C10 | CC10906 | ZW9 | E55 |
| C20 | CC20906 | ZW9 | E55 |
| C20/C6P | CC20906 | ZW9 & C6P | E55 & C6P |
| K10 (4-Wheel Drive) | CK10906 | ZW9 | E55 |
| K20 (4-Wheel Drive) | CK20906 | ZW9 | E55 |

SUBURBAN—Conventional

STANDARD SPECIFICATIONS

(See Blue Tab Section for Specification Details)

| Series | C10 | C20 | C20/C6P |
|---|---|------------------------|---|
| Engine | 5.7 Liter, 350 4-bbl. V8 | | |
| Base Equip. | | | |
| Clutch | 12', 150 sq. in. | — | 12', 150 sq. in. |
| Air Filter | Oiled-paper Element | | |
| Oil Filter | Throwaway Type | | |
| Exhaust System | Single; Aluminized | | |
| Emission Control Systems | See Engine & Cooling Section for specific model applications | | |
| Suspension, Front | Independent; Coil Springs | | |
| Capacity | 3400 lb. | 3800 lb. | 3800 lb. |
| Springs @ Ground | 1625 lb. ea. | 1750 lb. ea. | 1900 lb. ea. |
| Shock Absorbers | 25mm dia. | 25mm dia. | 32mm dia. |
| Stabilizer Bar | — | — | 1.06' dia |
| Suspension, Rear | Salisbury Axle; Hypoid Drive; Two-stage Multi-leaf Springs | | |
| Axle Capacity | 3750 lb. | 6000 lb. | 6000 lb. |
| Axle Ratio | 3.08 | 3.21 | 3.42 |
| Springs, Main @ Ground | 2000 lb. ea. | 2000 lb. ea. | 3000 lb. ea. |
| Shock Absorbers | 25mm dia. | 25mm dia. | 32mm dia. |
| Brakes | Hydraulic; Self-adjusting | | |
| Front | Disc; 11.86' Rotor | Disc; 12.5' Rotor | Disc; 12.5' Rotor |
| Rear | Drum; 11.15' x 2.75' | Drum; 11.15' x 2.75' | Drum; 13.0' x 2.5' |
| Booster | Dual Diaphragm | | |
| Parking | Cable to Rear Wheels | | |
| Electrical | 12 Volt; Negative Ground | | |
| Battery—Freedom Type | 3200 watts @ 0°F. | | |
| Delcotron Generator | 37 amp. | | |
| Frame | Carbon Steel; 39,000 psi | | |
| Section Modulus | 3.14 | 3.92 | 3.92 |
| Fuel Tank (nominal capacity) | 25 gal. | | |
| Steering Gear Type | Manual; Recirculating Ball Gear | | |
| Linkage | Parallelogram | | |
| Transmission | Fully Synchronized 3-Speed Manual | Automatic | 4-Speed Manual |
| Shift Location | Steering Column | Steering Column | Floor |
| Tires | (5) P235/75R15 | (4) 8.75R-16.5C (6PR) | Fr. (2) 9.50-16.5D (8PR) Rr. (2) 9.50-16.5E (10PR) |
| Wheels | (5) Disc 15' x 6" | (4) Disc 16.5' x 6" | (4) Disc 16.5' x 6.75" |

SUBURBAN—4-Wheel Drive

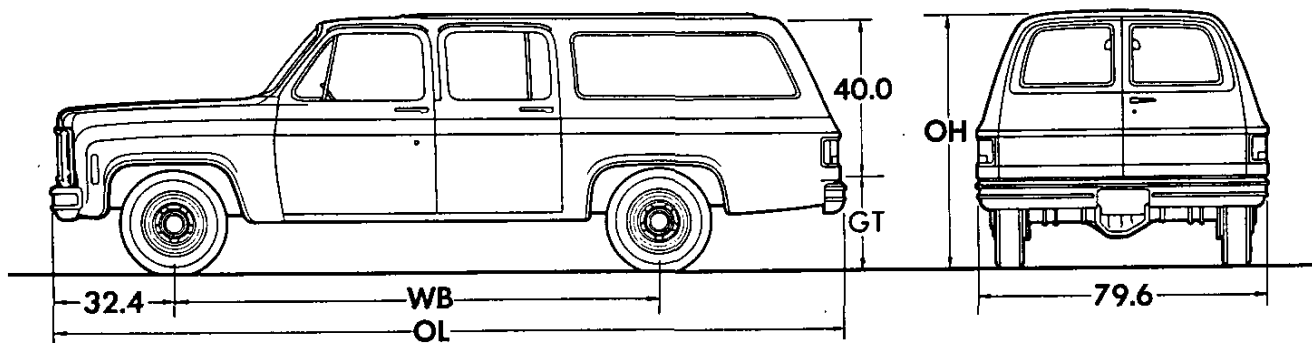
STANDARD SPECIFICATIONS

(See Blue Tab Section for Specification Details)

| Series | K10 | K20 |
|---|--|---|
| Engine | 5.7 Liter, 350 4-bbl V8 | |
| Base Equip. | — | |
| Clutch | 12"; 150 sq. in. | |
| Air Filter | Oiled-paper Element | |
| Oil Filter | Throwaway Type; | |
| Exhaust System | Single; Aluminized | |
| Emission Control Systems | See Engine & Cooling Section for specific model applications | |
| Suspension, Front | Salisbury Axle; Hypoid Drive; Single-stage 2-leaf Springs | |
| Capacity | 3600 lb. | 3800 lb. |
| Axle Ratio | 3.08 | 3.73 |
| Springs @ Ground | 1850 lb. ea. | 1850 lb. ea. |
| Shock Absorbers | 25mm dia. | 32mm dia. |
| Stabilizer Bar | 1.25" dia. | 1.25" dia. |
| Hubs—Free Wheeling | Standard | Standard |
| Suspension, Rear | Salisbury Axle; Hypoid Drive; Two-stage Multi-leaf Springs | |
| Axle Capacity | 4000 lb. | 6000 lb. |
| Axle Ratio | 3.08 | 3.73 |
| Springs @ Ground | 2000 lb. ea. | 3000 lb. ea. |
| Shock Absorbers | 25mm dia. | 32mm dia. |
| Brakes | Hydraulic; Self-adjusting | |
| Front | Disc; 11.86" Rotor | Disc; 12.5" Rotor |
| Rear | Drum; 11.15" x 2.75" | Drum; 13" x 2.5" |
| Booster | Dual Diaphragm | |
| Parking | Cable to Rear Wheels | |
| Electrical | 12 Volt; Negative Ground | |
| Battery—Freedom Type | 3200 watts @ 0°F. | |
| Delcotron Generator | 37 amp. | |
| Frame | Carbon Steel; 39,000 psi | |
| Section Modulus | 3.92 | |
| Fuel Tank (nominal capacity) | 25 gal. | |
| Steering Gear Type | Integral Power | |
| Transmission | Automatic | 4-Speed Manual |
| Shift Location | Steering Column | Floor |
| Transfer Case | New Process 205 2-Speed | |
| Shift Lever | Single Lever | |
| PTO Opening | Left Side | |
| Tires | (5) P215/75R15 | Fr. (2) 9.50-16.5D (8PR) Rr. (2) 9.50-16.5E (10PR) |
| Wheels | (5) Disc 15" x 6" | (4) Disc 16.5" x 6.75" |

SUBURBAN

Body Ordering Codes:
 Panel Rear Doors—ZW9
 Endgate—E55†



Capacity—143.5 cu ft
 Load Floor Area—40 sq ft

| Series | Ground Clearance (in)★ | |
|--------|------------------------|------|
| | Front | Rear |
| C10 | 7.5 | 7.2 |
| C20 | 8 | 7.8 |
| † K10 | 8.7 | 7.2 |
| K20 | 8.8 | 7.2 |

| Model | Engine No. Cyl. | Dimensions (in)★ | | | | †Curb Weight (lb) | | | †Model Weight (lb) * | | |
|-------|-----------------|------------------|----|----|----|-------------------|------|-------|----------------------|------|-------|
| | | WB | OL | OH | GT | Front | Rear | Total | Front | Rear | Total |

C10 SERIES

| | | | | | | | | | | | |
|---------|---|-------|-------|------|------|------|------|------|------|------|------|
| CC10906 | 8 | 129.5 | 218.7 | 71.5 | 27.5 | 2178 | 2164 | 4342 | 2421 | 2371 | 4792 |
|---------|---|-------|-------|------|------|------|------|------|------|------|------|

C20 SERIES

| | | | | | | | | | | | |
|-----------------|---|-------|-------|------|------|------|------|------|------|------|------|
| CC20906 | 8 | 129.5 | 218.7 | 71.8 | 27.3 | 2385 | 2253 | 4638 | 2628 | 2460 | 5088 |
| CC20906 (w/C6P) | 8 | 129.5 | 218.7 | 71.8 | 27.3 | 2413 | 2305 | 4718 | 2656 | 2512 | 5168 |

K10 SERIES

| | | | | | | | | | | | |
|---------|---|-------|-------|------|------|------|------|------|------|------|------|
| CK10906 | 8 | 129.5 | 218.7 | 73.5 | 29.5 | 2518 | 2291 | 4809 | 2761 | 2498 | 5259 |
|---------|---|-------|-------|------|------|------|------|------|------|------|------|

K20 SERIES

| | | | | | | | | | | | |
|---------|---|-------|-------|------|------|------|------|------|------|------|------|
| CK20906 | 8 | 129.5 | 218.7 | 75.4 | 32.0 | 2621 | 2446 | 5067 | 2864 | 2653 | 5517 |
|---------|---|-------|-------|------|------|------|------|------|------|------|------|

★Dimensions with standard equipment, unloaded.

*Model Weight includes Curb Weight plus occupants (standard seating capacity x 150 lb). Total Model Weight may vary as much as ±150 lbs to allow for production build variation.

†Curb Weights and Model Weights shown are for models with ZW9 Panel Rear Doors. For models with E55 Endgate, weights must be adjusted as follows: Front -19 lb; Rear +54 lb; Total added weight 35 lb.

SUBURBAN POWER TEAMS

ALL STATES EXCEPT CALIFORNIA

CONSULT GVWR SELECTOR AND TIRE CHARTS TO INSURE TIRE CAPACITY AND AVAILABILITY

| ENGINE | TRANSMISSIONS BY RPO NUMBER | | | TIRES BY RPO NUMBER | | AXLE RATIOS BY RPO NUMBER | | | GVWR |
|--------|--------------------------------|------|------|------------------------|------------|------------------------------|------|------|------|
| | 3-SP | 4-SP | AUTO | P215/75R15 | P235/75R15 | 3.08 | 3.42 | 3.73 | |

C10 SERIES

| | | | | | | | | | |
|------------------------------------|-----|-----|-----|---|--------------------|-----|-----|-----|--------|
| LS9 V8 5.7 Liter (350-4 BBL) | MM3 | MM4 | MX1 | — | BD, OJ, BJ, PR, PW | GQ1 | HE4 | — | ● 6400 |
| | MM3 | MM4 | — | — | PR, PW | — | GQ1 | GT4 | 6800 |
| | — | — | MX1 | — | PR, PW | GQ1 | HE4 | GT4 | 6800 |

K10 SERIES

| | | | | | | | | | |
|------------------------------------|---|---|-----|--------|------------|-----|-----|---|--------|
| LS9 V8 5.7 Liter (350-4 BBL) | — | — | MX1 | KT, KU | — | GQ1 | HE4 | — | ▲ 6200 |
| | — | — | MX1 | — | BD, OJ, BJ | GQ1 | HE4 | — | ▲ 6800 |
| | — | — | MX1 | — | PR, PW | GQ1 | HE4 | — | 7300 |

| ENGINE | TRANSMISSIONS BY RPO NUMBER | | TIRES BY RPO NUMBER | | | | AXLE RATIOS BY RPO NUMBER | | | | | GVWR |
|--------|--------------------------------|------|------------------------|-----------|------------|------------|------------------------------|------|------|------|------|------|
| | 4-SP | AUTO | 8.75R-16.5 | 9.50-16.5 | 9.50R-16.5 | 7.50R-16.5 | 3.21 | 3.42 | 3.73 | 4.10 | 4.56 | |

C20 SERIES W/GVWR UP TO 8500 LB.

| | | | | | | | | | | | | |
|------------------------------------|---|-----|------------|---|--------|-------------------|------|-----|-----|---|---|------|
| LS9 V8 5.7 Liter (350-4 BBL) | — | MX1 | WU, RU, VX | — | UK, VY | VK, VP, WX, WY | *GQ1 | HE4 | GT4 | — | — | 7100 |
| | — | MX1 | — | — | UK, VY | — | *GQ1 | HE4 | GT4 | — | — | 7500 |

C20 SERIES W/GVWR OVER 8500 LB.

| | | | | | | | | | | | | |
|------------------------------------|-----|-----|---|------------|---|---|------|-----|-----|-----|-----|------|
| LT9 V8 5.7 Liter (350-4 BBL) | MM4 | — | — | UC, UH | — | — | — | GQ1 | GT4 | — | — | 8600 |
| | — | MX1 | — | UC, UH | — | — | — | — | — | GQ1 | HC4 | 8600 |
| LE8 V8 7.4 Liter (454-4 BBL) | — | MX1 | — | UF, UC, UH | — | — | *GQ1 | — | GT4 | GTS | — | 8600 |

K20 SERIES

| | | | | | | | | | | | | |
|------------------------------------|-----|-----|---|------------|---|---|---|---|-----|-----|-----|------|
| LT9 V8 5.7 Liter (350-4 BBL) | MM4 | — | — | UF, UC, UH | — | — | — | — | GQ1 | GTS | — | 8600 |
| | — | MX1 | — | UF, UC, UH | — | — | — | — | — | GQ1 | HC4 | 8600 |
| LE4 V8 6.6 Liter (400-4 BBL) | — | MX1 | — | UF, UC, UH | — | — | — | — | — | GQ1 | — | 8600 |

- ◆ Locking Differential rear axle also available; GQ1 indicates standard axle ratio. ● Center seat (ATS) not available.
- * For Required Chassis Equipment see **GVWR SELECTOR**. ▲ Center and rear seats (AS3) not available.
- Locking Differential rear axle not available.

ENGINE RATINGS

ALL STATES EXCEPT CALIFORNIA

| SAE Net Ratings @ 85°F | *5.7 Liter 350 4-bbl V8 | **5.7 Liter 350 4-bbl V8 | **6.6 Liter 400 4-bbl V8 | **7.4 Liter 454 4-bbl V8 |
|------------------------|----------------------------|-----------------------------|-----------------------------|-----------------------------|
| Net Horsepower..... | 170 @ 4000 rpm | 165 @ 3800 rpm | 180 @ 3600 rpm | 210 @ 3800 rpm |
| Net Torque, lb-ft..... | 270 @ 2400 rpm | 255 @ 2800 rpm | 310 @ 2400 rpm | 340 @ 2800 rpm |

*Engine with Light or Medium Duty Emissions (w 'GVWR up to 8500 lb.)

**Engine with Heavy Duty Emissions (w 'GVWR over 8500 lb.)

SUBURBAN POWER TEAMS

CALIFORNIA ONLY

CONSULT GVWR SELECTOR AND TIRE CHARTS TO INSURE TIRE CAPACITY AND AVAILABILITY

| ENGINE | TRANSMISSIONS BY RPO NUMBER | | | TIRES BY RPO NUMBER | | AXLE RATIOS BY RPO NUMBER | | | *GVWR |
|--------|--------------------------------|------|------|------------------------|------------|------------------------------|------|------|-------|
| | 3-SP | 4-SP | AUTO | P215/75R15 | P235/75R15 | 3.08 | 3.42 | 3.73 | |

C10 SERIES

| | | | | | | | | | |
|------------------------------------|---|-----|-----|---|--------------------|-----|-----|-----|--------|
| LS9 V8 5.7 Liter (350-4 BBL) | — | MM4 | MX1 | — | BD, QJ, BJ, PR, PW | GQ1 | HE4 | — | ● 6400 |
| | — | MM4 | — | — | PR, PW | — | GQ1 | GT4 | 6800 |
| | — | — | MX1 | — | PR, PW | GQ1 | HE4 | GT4 | 6800 |

K10 SERIES

| | | | | | | | | | |
|------------------------------------|---|---|-----|--------|------------|-----|-----|---|--------|
| LS9 V8 5.7 Liter (350-4 BBL) | — | — | MX1 | KT, KU | — | GQ1 | HE4 | — | ▲ 6200 |
| | — | — | MX1 | — | BD, QJ, BJ | GQ1 | HE4 | — | ▲ 6800 |
| | — | — | MX1 | — | PR, PW | GQ1 | HE4 | — | 7300 |

| ENGINE | TRANSMISSIONS BY RPO NUMBER | | TIRES BY RPO NUMBER | | | | AXLE RATIOS BY RPO NUMBER | | | | | *GVWR |
|--------|--------------------------------|------|------------------------|-----------|------------|------------|------------------------------|------|------|------|------|-------|
| | 4-SP | AUTO | 8.75R-16.5 | 9.50-16.5 | 9.50R-16.5 | 7.50R-16.5 | 3.21 | 3.42 | 3.73 | 4.10 | 4.56 | |

C20 SERIES W/GVWR UP TO 8500 LB.

| | | | | | | | | | | | | |
|------------------------------------|---|-----|------------|---|--------|-------------------|------|-----|-----|---|---|------|
| LS9 V8 5.7 Liter (350-4 BBL) | — | MX1 | WU, RU, VX | — | UK, VY | VK, VP, WX, WY | ■GQ1 | HE4 | GT4 | — | — | 7100 |
| | — | MX1 | — | — | UK, VY | — | ■GQ1 | HE4 | GT4 | — | — | 7500 |

C20 SERIES W/GVWR OVER 8500 LB.

| | | | | | | | | | | | | |
|------------------------------------|-----|-----|---|------------|---|---|------|-----|-----|-----|-----|------|
| LT9 V8 5.7 Liter (350-4 BBL) | MM4 | — | — | UC, UH | — | — | — | GQ1 | GT4 | — | — | 8600 |
| | — | MX1 | — | UC, UH | — | — | — | — | — | GQ1 | HC4 | 8600 |
| LE8 V8 7.4 Liter (454-4 BBL) | — | MX1 | — | UF, UC, UH | — | — | ■GQ1 | — | GT4 | GT5 | — | 8600 |

K20 SERIES

| | | | | | | | | | | | | |
|------------------------------------|-----|-----|---|------------|---|---|---|---|-----|-----|-----|------|
| LT9 V8 5.7 Liter (350-4 BBL) | MM4 | — | — | UF, UC, UH | — | — | — | — | GQ1 | GT5 | — | 8600 |
| | — | MX1 | — | UF, UC, UH | — | — | — | — | — | GQ1 | HC4 | 8600 |
| LE4 V8 6.6 Liter (400-4 BBL) | — | MX1 | — | UF, UC, UH | — | — | — | — | — | GQ1 | — | 8600 |

- ◆ Locking Differential rear axle also available; GQ1 indicates standard axle ratio. ● Center seat (AT5) not available.
 * For Required Chassis Equipment see **GVWR SELECTOR**. ▲ Center and rear seats (AS3) not available.
 ■ Locking Differential rear axle not available.

ENGINE RATINGS CALIFORNIA ONLY

| SAE Net Ratings @ 85°F | *5.7 Liter 350 4-bbl V8 | **5.7 Liter 350 4-bbl V8 | **6.6 Liter 400 4-bbl V8 | **7.4 Liter 454 4-bbl V8 |
|------------------------|----------------------------|-----------------------------|-----------------------------|-----------------------------|
| Net Horsepower..... | 170 @ 4000 rpm | 165 @ 3800 rpm | 180 @ 3600 rpm | 210 @ 3800 rpm |
| Net Torque, lb-ft..... | 275 @ 2000 rpm | 255 @ 2800 rpm | 310 @ 2400 rpm | 340 @ 2800 rpm |

- *Engine with Light or Medium Duty Emissions (w/GVWR up to 8500 lb.)
 **Engine with Heavy Duty Emissions (w/GVWR over 8500 lb.)

SUBURBAN

GVWR SELECTOR—ALL STATES

| GVW Rating (lbs) | †GAWR (lbs) | | Minimum Equipment Required for GVW Rating | | | |
|------------------|-------------|------|---|------|-------------------|--|
| | Front | Rear | Tire Capacity (lbs ea) | | Chassis Equipment | |
| | | | Front | Rear | | |

C10 SERIES

| | | | | | |
|--------|------|------|------|------|--|
| ● 6400 | 3250 | 3686 | 1843 | 1843 | Standard |
| 6800 | 3250 | 3750 | 1910 | 1910 | Center Seat (AT5) and Stabilizer Bar (F59); or Center and Rear Seats (AS3) |

K10 SERIES

| | | | | | |
|--------|------|------|------|------|----------|
| ■ 6200 | 3166 | 3166 | 1583 | 1583 | Standard |
| ■ 6800 | 3520 | 3686 | 1843 | 1843 | |
| 7300 | 3600 | 3968 | 1984 | 1984 | |

†GAWR's shown are the maximum for each axle with equipment listed. Other GAWR's are available, and they are determined as the minimum capacity of either axle, springs or tires.

● Center seat (AT5) not available.

■ Center and rear seats (AS3) not available.

FRONT AND REAR TIRE AVAILABILITY CHART—ALL STATES

C-K10 SERIES

Spare tire to match either front or rear tires must be ordered

K10 models require matching front and rear tread

| Description | Capacity (lbs ea) | Highway | | On-Off Road | | Spare |
|---|----------------------|---------|------|-------------|------|-------|
| | | Front | Rear | *Front | Rear | |
| TUBELESS | | | | | | |
| #P215/75R15 (Base K10) Steel Belted Radial | 1583 | XKT | YKT | — | — | ZKT |
| #P215/75R15 White Wall Steel Belted Radial | 1583 | XKU | YKU | — | — | ZKU |
| P235/75R15 (Base C10) Steel Belted Radial | 1843 | XBD | YBD | — | — | ZBD |
| P235/75R15 White Wall Steel Belted Radial | 1843 | — | — | *XQJ | YQJ | ZQJ |
| P235/75R15 XL Steel Belted Radial | C10 1910 K10 1984 | XPR | YPR | — | — | ZPR |
| P235/75R15 White Wall XL Steel Belted Radial | C10 1910 K10 1984 | XPW | YPW | — | — | ZPW |

*On-Off road front tires available on K10 models only.

#K10 models only.

SUBURBAN

GVWR SELECTOR—ALL STATES

| GVW Rating (lbs) | †GAWR (lbs) | | Minimum Equipment Required for GVW Rating | | | |
|------------------|-------------|------|---|------|-------------------|--|
| | | | Tire Capacity (lbs ea) | | Chassis Equipment | |
| | Front | Rear | Front | Rear | | |

C20 SERIES

| | | | | | |
|------|------|------|------|------|---|
| 7100 | 3500 | 3980 | 1990 | 1990 | Standard |
| 7500 | 3500 | 5200 | 2780 | 2780 | HD Rear Springs (G50); HD Power Brakes (J55) |

C20/C6P SERIES

| | | | | | |
|------|------|------|------|------|----------|
| 8600 | 3800 | 6000 | 2780 | 3170 | Standard |
|------|------|------|------|------|----------|

K20 SERIES

| | | | | | |
|------|------|------|------|------|----------|
| 8600 | 3700 | 6000 | 2780 | 3170 | Standard |
|------|------|------|------|------|----------|

†GAWR's shown are the maximum for each axle with equipment listed. Other GAWR's are available, and they are determined as the minimum capacity of either axle, springs or tires.

FRONT AND REAR TIRE AVAILABILITY CHART—ALL STATES

C-K20 SERIES

Spare tire to match either front or rear tires is available at extra cost
K20 models require matching front and rear tread

| Description | Capacity (lbs ea) | Highway | | *On-Off Road | | Spare |
|---|-------------------|----------|----------|--------------|----------|------------|
| | | Front | Rear | †Front | Rear | |
| TUBELESS (Requires LS9 Engine) | | | | | | |
| *7.50R-16.5D Steel Belted Radial | 2440 | XWY — | YWY — | — — | — YWX | ZWY ZWX |
| *8.75R-16.5C Steel Belted Radial | 1990 | XWU | YWU | — | — | ZWU |
| *8.75R-16.5D Steel Belted Radial | 2350 | — — | YRU — | — — | — YVX | ZRU ZVX |
| *8.75R-16.5D Steel Belted Radial | 2350 | XRU — | YRU — | — — | — YVX | ZRU ZVX |
| *9.50R-16.5D Steel Belted Radial | 2780 | XUK — | YUK — | — — | — YVY | ZUK ZVY |
| TUBELESS (Requires LT9, LE4 or LE8 Engine) | | | | | | |
| 9.50-16.5D Polyester | 2780 | XUF | — | — | — | ZUF |
| 9.50-16.5E Polyester | 3170 | — | YUC | — | — YUH | ZUC ZUH |
| 9.50-16.5E Polyester | 3170 | XUC | YUC | — | — | ZUC |
| 9.50-16.5E | 3170 | — | — | †XUH | YUH | ZUH |
| TUBE-TYPE | | | | | | |
| *7.50R-16D Steel Belted Radial | 2440 | XVK — | YVK — | — — | — YVP | ZVK ZVP |

*C20906 models only. †On-Off road front tires available on K20 models only.

SUBURBAN 1980 VEHICLES WITH STANDARD EQUIPMENT

Prices shown are effective with vehicles produced on and after January 2, 1980

| Description | Model Number | Body Code | Wheel Base | Factory D&H(a) | List Price | Mfr's Suggested Retail Price* | Group Number |
|--|--------------|-----------|------------|----------------|------------|-------------------------------|--------------|
| ◆ 8-Cylinder 5.7 Liter (350 Cu. In) 4 BBL Engine-Engine Ordering Code LS9 | | | | | | | |
| C10 Series 2-Wheel Drive | | | | | | | |
| Panel Doors..... | CC10906 | ZW9 | 129.5" | 15.45 | 7410.00 | 7425.45 | 15 |
| Tailgate..... | CC10906 | E55 | 129.5" | 15.45 | 7441.00 | 7456.45 | 15 |
| K10 Series 4-Wheel Drive | | | | | | | |
| Panel Doors..... | CK10906 | ZW9 | 129.5" | 13.95 | 9180.00 | 9193.95 | 16 |
| Tailgate..... | CK10906 | E55 | 129.5" | 13.95 | 9211.00 | 9224.95 | 16 |
| C20 Series 2-Wheel Drive | | | | | | | |
| Panel Doors..... | CC20906 | ZW9 | 129.5" | 15.80 | 7876.00 | 7891.80 | 15 |
| Tailgate..... | CC20906 | E55 | 129.5" | 15.80 | 7907.00 | 7922.80 | 15 |
| ◆ 8-Cylinder 5.7 Liter (350 Cu. In) 4 BBL Engine-Engine Ordering Code LT9 | | | | | | | |
| C20 Series HD Chassis 2-Wheel Drive | | | | | | | |
| Panel Doors..... | CC20906 | ZW9 & C6P | 129.5" | 18.74 | 7820.00 | 7838.74 | 15 |
| Tailgate..... | CC20906 | E55 & C6P | 129.5" | 18.74 | 7851.00 | 7869.74 | 15 |
| K20 Series 4-Wheel Drive | | | | | | | |
| Panel Doors..... | CK20906 | ZW9 | 129.5" | 18.74 | 9451.00 | 9469.74 | 16 |
| Tailgate..... | CK20906 | E55 | 129.5" | 18.74 | 9482.00 | 9500.74 | 16 |

* Manufacturer's Suggested Retail Prices do not include applicable destination charges, state and local taxes, license fees, optional equipment or accessories or special items or services.

◆ Refer to Power Team Chart for California Emission Certification Requirements.

OPTIONS AND ACCESSORIES WHEN INSTALLED BY CHEVROLET

Prices shown are effective with vehicles produced on and after January 2, 1980

| Description | Added Weight (F R) | Option Number | Factory D&H(a) | List Price | Mfr's Suggested Retail Price◇ |
|--|--------------------|---------------|----------------------|------------|-------------------------------|
| POWER TEAMS AND AXLES | | | | | |
| <i>(See Power Teams Chart for availability and complete specifications)</i> | | | | | |
| Engines: | | | | | |
| 6.6 Liter (400 Cu. In.) 4 BBL V8. K20 series only..... | 16 4 | LE4 | N.A. | 140.00 | 140.00 |
| 7.4 Liter (454 Cu. In.) 4 BBL V8. C20 series only. Available only when N41 Power Steering, UA1 HD Battery and C6P HD Chassis are specified..... | 98 35 | LE8 | N.A. | 210.00 | 210.00 |
| Liquid Petroleum Gas Conversion: All 1980 Light Duty Truck gasoline production engines may be converted to use LP Gas when permissible under Federal and State laws and regulations without causing harmful effect to the engine. Complete conversion to LPG requires adaptation by a local distributor who sells and services LPG equipment. The exhaust system of the vehicles must be revised by the local distributor. This includes removing the catalytic converter (if so equipped) and replacing it with a muffling device to comply with noise laws of their particular area. Caution should be exercised so that the fuel tank is mounted on and is vented to the outside of the vehicle. In addition, vehicles converted to LPG should not be stored in enclosed places such as garages. | | | | | |
| Transmissions: | | | | | |
| <i>Automatic.</i> Standard on C20 series without C6P HD Chassis and K10 series. C-K20 series includes extra cooling. | | | | | |
| C10 series only..... | 11 4 | MX1 | N.A. | 395.00 | 395.00 |
| C20 series only | | | | | |
| Without C6P HD Chassis..... | 0 0 | MX1 | NO ADDITIONAL CHARGE | | |
| With C6P HD Chassis..... | 2 1 | MX1 | N.A. | 411.00 | 411.00 |
| K10 series only..... | 20 6 | MX1 | NO ADDITIONAL CHARGE | | |
| K20 series only..... | 4 4 | MX1 | N.A. | 411.00 | 411.00 |
| <i>4-Speed Manual.</i> Standard on K20 series. Included when C6P HD Chassis is specified. | | | | | |
| C10 series only..... | 61 20 | MM4 | N.A. | 175.00 | 175.00 |

(a) D & H Charges on vehicle and optional equipment include reimbursement to Chevrolet Motor Division for any tax that it has paid, incurred or agreed to pay thereon.

◇ State and local taxes not included.

SUBURBAN

OPTIONS AND ACCESSORIES WHEN INSTALLED BY CHEVROLET

Prices shown are effective with vehicles produced on and after January 2, 1980

| Description | Added Weight (F R) | Option Number | Factory D&H(a) | List Price | Mfr's Suggested Retail Price ◊ |
|---|-----------------------|---------------|----------------|------------|--------------------------------|
| POWER TEAMS AND AXLES | | | | | |
| Axles, Rear: (See Power Teams Chart for option number selection, availability and complete specifications) | | | | | |
| Optional Ratio..... | 0 0 | ... | N.A. | 27.00 | 27.00 |
| Locking Differential. | | | | | |
| C-K10 series only..... | 0 3 | G80 | N.A. | 197.00 | 197.00 |
| C-K20 series only..... | 0 5 | G80 | N.A. | 197.00 | 197.00 |

MODEL OPTIONS

(See Interior and Exterior Color Selection Chart)

| | | | | | |
|---|-------|-----|------|--------|--------|
| Scottsdale: Not available when YE9 Silverado is specified. Includes bright windshield and rear side window moldings, V37 Front and Rear Bumpers, B84 Body Side Spear Moldings, bright taillight, turn signal and side marker lamp bezels, dual horns; nameplates on front fender and instrument panel, B85 Headliner, U37 Cigarette Lighter, C91 Dome Lamp with Bright Bezels, bright sill plates and special insulation. Also includes spare tire cover when spare tire is specified..... | | | | | |
| | 14 25 | Z62 | N.A. | 328.00 | 328.00 |
| Silverado: With custom cloth or custom vinyl seats only. Includes V37 Front and Rear Bumpers, N31 Custom Steering Wheel, B85 Bright Body Side Upper Moldings, taillight and rear door or tailgate moldings, bright front turn signal and front side marker lamp bezels, Silverado fender nameplates, bright windshield and rear side window moldings, color-keyed carpeting with bright sill plates, plastic door trim panels with storage pockets and bright brushed-finish accents, BC3 Deluxe Instrument Cluster, dual horns, D34 Visor Mirror, V22 Deluxe Front Appearance, Silverado nameplate on instrument panel, U37 Cigarette Lighter, B85 Headliner, C91 Dome Lamp with Bright Bezels, special insulation, pillar trim panels plus B30 Floor and Wheelhouse Carpeting and Z53 Voltmeter, Temperature, and Oil Pressure Gages. Also includes spare tire cover when spare tire is specified..... | | | | | |
| | 45 61 | YE9 | N.A. | 727.00 | 727.00 |

OTHER OPTIONS

| | | | | | |
|---|-------|-----|------|--------|--------|
| Air Conditioning: All-Weather. Not available when V10 Cold Climate Package is specified. Includes extra cooling and K77 55-Amp Generator. | | | | | |
| Front. Included when C69 Front and Rear Air Conditioning is specified. Recommended for front seat area cooling only. | | | | | |
| Without Z62 Scottsdale or YE9 Silverado. Also includes B85 Headliner. | | | | | |
| C10 series only..... | 83 31 | C60 | N.A. | 726.00 | 726.00 |
| K10 series only..... | 89 29 | C60 | N.A. | 726.00 | 726.00 |
| C-K20 series only | | | | | |
| Without MX1 Automatic Transmission..... | 83 31 | C60 | N.A. | 726.00 | 726.00 |
| With MX1 Automatic Transmission..... | 89 27 | C60 | N.A. | 726.00 | 726.00 |
| With Z62 Scottsdale or YE9 Silverado. | | | | | |
| C10 series only..... | 75 12 | C60 | N.A. | 607.00 | 607.00 |
| K10 series only..... | 81 10 | C60 | N.A. | 607.00 | 607.00 |
| C-K20 series only | | | | | |
| Without MX1 Automatic Transmission..... | 75 12 | C60 | N.A. | 607.00 | 607.00 |
| With MX1 Automatic Transmission..... | 81 8 | C60 | N.A. | 607.00 | 607.00 |
| Front and Rear. Rear Interior Roof Mounted. Available only when YE9 Silverado or Z62 Scottsdale is specified. Rear system operates on recirculating air. Includes K81 63-Amp Generator | | | | | |
| C10 series only..... | 89 48 | C69 | N.A. | 954.00 | 954.00 |
| K10 series only..... | 95 47 | C69 | N.A. | 954.00 | 954.00 |
| K20 series only | | | | | |
| Without MX1 Automatic Transmission..... | 89 48 | C69 | N.A. | 954.00 | 954.00 |
| With MX1 Automatic Transmission..... | 95 45 | C69 | N.A. | 954.00 | 954.00 |
| Appearance, Deluxe Front: Includes chromed grille and rectangular headlamps. Included when YE9 Silverado is specified..... | | | | | |
| | 0 0 | V22 | N.A. | 60.00 | 60.00 |

(a) D & H Charges on vehicle and optional equipment include reimbursement to Chevrolet Motor Division for any tax that it has paid, incurred or agreed to pay thereon.
 ◊ State and local taxes not included.

SUBURBAN

OPTIONS AND ACCESSORIES WHEN INSTALLED BY CHEVROLET

Prices shown are effective with vehicles produced on and after January 2, 1980

| Description | Added Weight (F R) | Option Number | Factory D&H(s) | List Price | Mfr's Suggested Retail Price ◊ |
|---|-----------------------|---------------|----------------------|------------|--------------------------------|
| OTHER OPTIONS | | | | | |
| Batteries: 12-Volt | | | | | |
| <i>Auxiliary.</i> 3500 Watt Delco Freedom | 51 -7 | TP2 | N.A. | 103.00 | 103.00 |
| <i>Heavy-Duty.</i> 4000 Watt Delco Freedom. Included when Z82 Trailing Special or V10 Cold-Climate Package is specified .. | 2 0 | UA1 | N.A. | 41.00 | 41.00 |
| Brakes: Heavy-Duty Power. C20 series only. Standard on C6P HD Chassis and K20 series. | 4 35 | J55 | N.A. | 86.00 | 86.00 |
| Bumper Equipment: | | | | | |
| <i>Bumpers, Chromed.</i> Front and Rear. Included when Z62 Scottsdale or YE9 Silverado is specified. | 0 0 | V37 | N.A. | 58.00 | 58.00 |
| <i>Bumpers, Deluxe.</i> Front and Rear. Not available when V31 Bumper Guards are specified. Includes V37 Front and Rear Bumpers and black resilient impact strips | | | | | |
| Without Z62 Scottsdale or YE9 Silverado | 3 2 | VE5 | N.A. | 96.00 | 96.00 |
| With Z62 Scottsdale or YE9 Silverado | 3 2 | VE5 | N.A. | 38.00 | 38.00 |
| <i>Guards, Chromed, Front Bumper.</i> Available only when V37 Front and Rear Bumpers, Z62 Scottsdale or YE9 Silverado is specified | 10 -2 | V31 | N.A. | 35.00 | 35.00 |
| Clock, Electric: Not available when U16 Tachometer is specified. | | | | | |
| Without YE9 Silverado. Includes Z53 Voltmeter, Temperature and Oil Pressure Gages | 0 0 | U35 | N.A. | 59.00 | 59.00 |
| With YE9 Silverado | 0 0 | U35 | N.A. | 28.00 | 28.00 |
| Cold-Climate Package: Not available when YF5 California Emissions, C60 Front Air Conditioning or C69 Front and Rear Air Conditioning is specified. Includes super heater and defroster, engine block heater and anti-freeze protection to -32 degrees. | | | | | |
| Without Z82 Trailing Special. Also includes UA1 HD Battery and K77 55-Amp Generator | 5 2 | V10 | N.A. | 149.00 | 149.00 |
| With Z82 Trailing Special | 3 2 | V10 | N.A. | 61.00 | 61.00 |
| Coolers: Recommended for heavy duty trailering. | | | | | |
| <i>Engine Oil.</i> | 9 -1 | KC4 | N.A. | 97.00 | 97.00 |
| <i>Transmission Oil, HD</i> Available only when MX1 Automatic Transmission is specified. C-K10 series also available only when C60 Front Air Conditioning, C69 Front and Rear Air Conditioning or V01 HD Radiator is specified. | 5 -1 | V02 | N.A. | 48.00 | 48.00 |
| Cooling: Radiator, Heavy-Duty. Not available when C60 Front Air Conditioning or C69 Front and Rear Air Conditioning is specified. | | | | | |
| C-K10 series only. | 8 -1 | V01 | N.A. | 43.00 | 43.00 |
| C-K20 series only. Also not available when MX1 Automatic Transmission is specified. | 6 -1 | V01 | N.A. | 43.00 | 43.00 |
| Door Lock System, Power: <i>All side doors.</i> Included when Q02 Operating Convenience Package is specified. | 3 1 | AU3 | N.A. | 150.00 | 150.00 |
| Emission Systems: | | | | | |
| <i>California Emission Requirements:</i> Not available when V10 Cold Climate Package is specified. Includes all testing, equipment and /or certification necessary for registration in the State of California (See Power Teams Chart for availability and complete specifications) | 12 0 | YF5 | N.A. | 72.00 | 72.00 |
| <i>Standard Emission System.</i> Not available when YF5 California Emissions are specified | 0 0 | NA5 | NO ADDITIONAL CHARGE | | |
| Floor Covering: | | | | | |
| <i>Carpeting, Floor and Wheelhouse:</i> Available only when Z62 Scottsdale and AT5 or AS3 Seats are specified. Included when YE9 Silverado is specified. | -4 32 | B30 | N.A. | 115.00 | 115.00 |
| <i>Mats, Color-Keyed, Front Floor</i> | 4 3 | B32 | N.A. | 12.00 | 12.00 |
| Gages: | | | | | |
| <i>Voltmeter, Temperature and Oil Pressure.</i> Included when YE9 Silverado, U35 Electric Clock or U16 Tachometer is specified . | 1 0 | Z53 | N.A. | 31.00 | 31.00 |
| <i>Tachometer.</i> Not available when U35 Electric Clock is specified. | | | | | |
| Without YE9 Silverado. Includes Z53 Voltmeter, Temperature and Oil Pressure Gages | 2 0 | U16 | N.A. | 93.00 | 93.00 |
| With YE9 Silverado | 1 0 | U16 | N.A. | 62.00 | 62.00 |

(a) D & H Charges on vehicle and optional equipment include reimbursement to Chevrolet Motor Division for any tax that it has paid, incurred or agreed to pay thereon.
 ◊ State and local taxes not included.

SUBURBAN

OPTIONS AND ACCESSORIES WHEN INSTALLED BY CHEVROLET

Prices shown are effective with vehicles produced on and after January 2, 1980

| Description | Added Weight (F R) | Option Number | Factory D&H(a) | List Price | Mfr's Suggested Retail Price ◊ |
|--|-----------------------|---------------|----------------|------------|--------------------------------|
| OTHER OPTIONS | | | | | |
| Generators: | | | | | |
| <i>55-Amp Delcotron.</i> Not available when Z82 Trailering Special or C69 Front and Rear Air Conditioning is specified. Included when C60 Front Air Conditioning or V10 Cold-Climate Package is specified. | 0 | 0 | K77 | N.A. | 47.00 47.00 |
| <i>63-Amp Delcotron.</i> Included when C69 Front and Rear Air Conditioning or Z82 Trailering Special is specified. | 0 | 0 | K81 | N.A. | 52.00 52.00 |
| Without C60 Air Conditioning or V10 Cold-Climate Package. | 0 | 0 | K81 | N.A. | 5.00 5.00 |
| With C60 Air Conditioning or V10 Cold-Climate Package . . . | 0 | 0 | A01 | N.A. | 61.00 61.00 |
| Glass: Tinted. All Windows | 0 | 0 | UY7 | N.A. | 35.00 35.00 |
| Harness, Trailer Wiring: Heavy-Duty 7-Lead. | 0 | 3 | T63 | N.A. | 9.00 9.00 |
| Headlamp Warning Buzzer. | 0 | 0 | T63 | N.A. | 9.00 9.00 |
| Headliner, Interior: Included when YE9 Silverado, Z62 Scottsdale, C60 Front Air Conditioning or C69 Front and Rear Air Conditioning is specified. Includes C91 Dome Lamp. | 8 | 19 | BB5 | N.A. | 119.00 119.00 |
| Hood Lock Release: Inside | 1 | 0 | T44 | N.A. | 25.00 25.00 |
| Instrument Panel, Deluxe: Available only when U35 Electric Clock, U16 Tachometer or Z53 Voltmeter, Temperature and Oil Pressure Gages are specified. Included when YE9 Silverado is specified. | 0 | 0 | BC3 | N.A. | 39.00 39.00 |
| Lamps: | | | | | |
| <i>Dome.</i> Included when BB5 Headliner, Z62 Scottsdale, YE9 Silverado, C60 Front or C69 Front and Rear Air Conditioning is specified. Includes door actuated switches and bright bezels . . | 1 | 0 | C91 | N.A. | 37.00 37.00 |
| <i>Roof Marker.</i> Five. Not available when YF5 California Emissions are specified. | 1 | 0 | U01 | N.A. | 40.00 40.00 |
| Lighter, Cigarette: Included when YE9 Silverado or Z62 Scottsdale is specified. | 0 | 0 | U37 | N.A. | 25.00 25.00 |
| Mirror, Visor: Included when YE9 Silverado is specified. | 1 | 0 | D34 | N.A. | 6.00 6.00 |
| Mirrors, Exterior: LH and RH. | | | | | |
| <i>Below-Eye-Line Type. 9" x 6.5"</i> | | | | | |
| <i>Painted</i> | 9 | 3 | D44 | N.A. | 40.00 40.00 |
| <i>Stainless Steel</i> | 9 | 3 | D45 | N.A. | 65.00 65.00 |
| <i>Camper Type. 7.5" x 10.5".</i> Stainless steel. Adjustable arm feature to provide field of vision for vehicles to 96" wide. Shipped loose for dealer installation. | 9 | 3 | DF2 | N.A. | 76.00 76.00 |
| Moldings: | | | | | |
| <i>Body Side Spear.</i> Bright with black insert. Not available when ZY3 Special Two-Tone Paint, ZY5 Exterior Decor Package, YE9 Silverado, YG2 Wood-Grained Exterior Trim, B85 Body Side Upper Moldings or YG1 Body Side Upper and Lower Moldings are specified. Included when Z62 Scottsdale is specified. | 3 | 3 | B84 | N.A. | 66.00 66.00 |
| <i>Body Side Upper.</i> Not available when ZY3 Special Two-Tone Paint, ZY5 Exterior Decor Package, YG2 Wood-Grained Exterior Trim, B84 Body Side Spear Moldings or YG1 Body Side Upper and Lower Moldings are specified. Included when YE9 Silverado is specified. Includes fender, door, rear side panel, rear door or tailgate moldings plus bright front turn signal, front side marker and taillight trim. | | | | | |
| Without Z62 Scottsdale | 2 | 3 | B85 | N.A. | 71.00 71.00 |
| With Z62 Scottsdale | 2 | 3 | B85 | N.A. | 5.00 5.00 |
| <i>Body Side Upper and Lower.</i> Not available when B84 Body Side Spear Moldings or B85 Body Side Upper Moldings are specified. Included when ZY3 Special Two-Tone Paint, ZY5 Exterior Decor Package or YG2 Wood-Grained Trim is specified. Includes lower body side, rear door or tailgate and B96 Wheel Opening Moldings. | | | | | |
| Without Z62 Scottsdale or YE9 Silverado. | 4 | 5 | YG1 | N.A. | 168.00 168.00 |
| With Z62 Scottsdale. | 3 | 4 | YG1 | N.A. | 102.00 102.00 |
| With YE9 Silverado | 3 | 4 | YG1 | N.A. | 97.00 97.00 |
| Guards, Door Edge. Not available when YG2 Wood-Grained Exterior Trim is specified. | 0 | 0 | B93 | N.A. | 18.00 18.00 |

(a) D & H Charges on vehicle and optional equipment include reimbursement to Chevrolet Motor Division for any tax that it has paid, incurred or agreed to pay thereon.
 ◊ State and local taxes not included.

SUBURBAN

OPTIONS AND ACCESSORIES WHEN INSTALLED BY CHEVROLET

Prices shown are effective with vehicles produced on and after January 2, 1980

| Description | Added Weight (F R) | Option Number | Factory D&H(a) | List Price | Mfr's Suggested Retail Price◇ |
|---|-----------------------|---------------|----------------|----------------------|-------------------------------|
| OTHER OPTIONS | | | | | |
| Moldings: (Continued) | | | | | |
| <i>Wheel Opening.</i> Included when YG1 Body Side Upper and Lower Moldings, YG2 Wood-Grained Exterior Trim, ZY3 Special Two-Tone Paint or ZY5 Exterior Decor Package is specified | 1 | 1 | B96 | N.A. | 25.00 25.00 |
| Operating Convenience Package: Includes A31 Power Windows and AU3 Power Door Locks. | 12 | 70 | ZQ2 | N.A. | 380.00 380.00 |
| Paints, Exterior: See Interior and Exterior Color Selection Chart for ordering information. | | | | | |
| <i>Solid.</i> | 0 | 0 | ZY1 | NO ADDITIONAL CHARGE | |
| <i>Special Two-Tone.</i> Area between upper and lower side moldings painted secondary color. Includes YG1 Body Side Upper and Lower Moldings and B96 Wheel Opening Moldings. | | | | | |
| Without Z62 Scottsdale or YE9 Silverado. | 4 | 5 | ZY3 | N.A. | 276.00 276.00 |
| With Z62 Scottsdale | 4 | 5 | ZY3 | N.A. | 210.00 210.00 |
| With YE9 Silverado | 4 | 5 | ZY3 | N.A. | 205.00 205.00 |
| <i>Exterior Decor Package.</i> Hood and area between upper and lower side moldings painted secondary color. Includes YG1 Body Side Upper and Lower Moldings, B96 Wheel Opening Moldings, hood ornament and hood accent stripes. | | | | | |
| Without Z62 Scottsdale or YE9 Silverado. | 4 | 5 | ZY5 | N.A. | 395.00 395.00 |
| With Z62 Scottsdale | 4 | 5 | ZY5 | N.A. | 328.00 328.00 |
| With YE9 Silverado | 4 | 5 | ZY5 | N.A. | 323.00 323.00 |
| Radio Equipment: | | | | | |
| <i>AM Radio.</i> | 5 | 2 | U63 | N.A. | 97.00 97.00 |
| <i>AM /FM Radio.</i> | 7 | 2 | U69 | N.A. | 153.00 153.00 |
| <i>AM /FM Stereo Radio.</i> | 14 | 3 | U58 | N.A. | 242.00 242.00 |
| <i>AM /FM Stereo Radio with 8 Track Stereo Tape.</i> | 14 | 5 | UM2 | N.A. | 345.00 345.00 |
| <i>AM /FM Stereo Radio with Stereo Cassette Tape.</i> | 13 | 5 | UN3 | N.A. | 351.00 351.00 |
| <i>AM /FM /Citizens Band Radio with Triband Mast Antenna.</i> Available only when U80 Rear Speaker is specified. | 8 | 2 | UP5 | N.A. | 454.00 454.00 |
| <i>Speaker, Rear Auxiliary.</i> Available only when U63 AM Radio, U69 AM /FM Radio or UP5 AM /FM Citizens Band Radio is specified | 0 | 2 | U80 | N.A. | 20.00 20.00 |
| <i>Windshield Antenna.</i> Included when U63, U69, UM2, UN3 or U58 Radio is specified. Not available when UP5 Radio is specified . | 0 | 0 | U76 | N.A. | 29.00 29.00 |
| Seats: Seat trim matches front seat whether standard or optional. Includes seat area floor covering, floor insulation and (3) seat belts. Dealer Note - One of the following seat options must be specified. (Added weight includes passenger weight allowance of 150-lbs per seating position). | | | | | |
| <i>Center only.</i> Non-adjustable type with independent LH and RH folding sections | | | | | |
| Without Z62 Scottsdale. | 170 | 419 | AT5 | N.A. | 309.00 309.00 |
| With Z62 Scottsdale. | 166 | 407 | AT5 | N.A. | 309.00 309.00 |
| <i>Center and Rear.</i> Includes non-adjustable center and quick release removable type rear seats, (3) additional seat belts plus LH and RH rear arm rests with ash trays. | | | | | |
| C10 series only. Available only when PR or PW P235 /75R15 tires are specified. Also includes F59 Stabilizer | | | | | |
| Without Z62 Scottsdale | 211 | 916 | AS3 | N.A. | 604.00 604.00 |
| With Z62 Scottsdale. | 207 | 904 | AS3 | N.A. | 604.00 604.00 |
| C-K20 or K10 series only. K10 Available only when PR or PW P235 /75R15 tires are specified | | | | | |
| Without Z62 Scottsdale | 191 | 916 | AS3 | N.A. | 576.00 576.00 |
| With Z62 Scottsdale. | 87 | 904 | AS3 | N.A. | 576.00 576.00 |
| <i>Optional Seat Not Desired.</i> | 0 | 0 | YG4 | NO ADDITIONAL CHARGE | |

(a) D & H Charges on vehicle and optional equipment include reimbursement to Chevrolet Motor Division for any tax that it has paid, incurred or agreed to pay thereon.
 ◇ State and local taxes not included.

SUBURBAN

OPTIONS AND ACCESSORIES WHEN INSTALLED BY CHEVROLET

Prices shown are effective with vehicles produced on and after January 2, 1980

| Description | Added Weight (F R) | Option Number | Factory D&H(a) | List Price | Mfr's Suggested Retail Price◇ |
|---|-----------------------|---------------|----------------|----------------------|-------------------------------|
| OTHER OPTIONS | | | | | |
| Seat Trim: Driver and Passenger. | | | | | |
| <i>Vinyl Bench Seat.</i> Not available when Z82 Scottsdale or YE9 Silverado is specified. | 0 | 0 | ... | NO ADDITIONAL CHARGE | |
| <i>Special Custom Cloth Bench Seat.</i> Available only when Z82 Scottsdale or YE9 Silverado is specified. | | | | | |
| With Z82 Scottsdale | | | | | |
| Without AT5 or AS3 Seats | 0 | 0 | ... | N.A. | 43.00 |
| With AT5 Center Seat without AS3 Center and Rear Seats. Includes full floor mats | 0 | 0 | ... | N.A. | 102.00 |
| With AS3 Center and Rear Seats. Includes full floor mats | 0 | 0 | ... | N.A. | 145.00 |
| With YE9 Silverado | | | | | |
| Without AT5 or AS3 Seats | 0 | 0 | ... | NO ADDITIONAL CHARGE | |
| With AT5 Center Seat without AS3 Center and Rear Seats. Includes full floor carpeting | 0 | 0 | ... | N.A. | 122.00 |
| With AS3 Center and Rear Seats. Includes full floor carpeting | 0 | 0 | ... | N.A. | 165.00 |
| <i>Custom Vinyl Bench Seat.</i> Available only when Z62 Scottsdale or YE9 Silverado is specified. | | | | | |
| With Z62 Scottsdale | | | | | |
| Without AT5 or AS3 Seats | 0 | 0 | ... | N.A. | 43.00 |
| With AT5 Center Seat without AS3 Center and Rear Seats. Includes full floor mats | 0 | 0 | ... | N.A. | 102.00 |
| With AS3 Center and Rear Seats. Includes full floor mats | 0 | 0 | ... | N.A. | 145.00 |
| With YE9 Silverado | | | | | |
| Without AT5 or AS3 Seats | 0 | 0 | ... | NO ADDITIONAL CHARGE | |
| With AT5 Center Seat without AS3 Center and Rear Seats. Includes full floor carpeting | 0 | 0 | ... | N.A. | 122.00 |
| With AS3 Center and Rear Seats. Includes full floor carpeting | 0 | 0 | ... | N.A. | 165.00 |
| <i>Custom Vinyl High Back Bucket Seats.</i> Available only when YE9 Silverado is specified. Includes center console. | | | | | |
| Without AT5 or AS3 Seats | -67 | -70 | ... | N.A. | 192.00 |
| With AT5 Center Seat without AS3 Center and Rear Seats. Includes full floor carpeting | -67 | -70 | ... | N.A. | 314.00 |
| With AS3 Center and Rear Seats. Includes full floor carpeting | -67 | -70 | ... | N.A. | 357.00 |
| Shield, Fuel Tank: | | | | | |
| C10-20 series only | | | | | |
| Without NE2 Fuel Tank | -8 | 33 | NY1 | N.A. | 41.00 |
| With NE2 Fuel Tank | -8 | 33 | NY1 | N.A. | 104.00 |
| K10-20 series only. Includes transfer case skid plate. | | | | | |
| Without NE2 Fuel Tank | 7 | 46 | NY1 | N.A. | 76.00 |
| With NE2 Fuel Tank | 7 | 46 | NY1 | N.A. | 139.00 |
| Shock Absorbers: Front and Rear, Heavy-Duty. C10-20 series only. Standard on K20. Included when C6P HD Chassis is specified. | | | | | |
| | 1 | 1 | F51 | N.A. | 28.00 |
| Speed Control: Automatic. Available only when MX1 Automatic Transmission is specified. | | | | | |
| | 8 | 0 | K30 | N.A. | 106.00 |
| Springs: | | | | | |
| <i>Front, Heavy-Duty.</i> | | | | | |
| C20-series only. Capacity 1900-lb each. Standard on C6P HD Chassis | | | | | |
| | -3 | 0 | F60 | N.A. | 12.00 |
| K10-20 series only. Capacity 2250-lb each. Recommended for snowplow type usage only. | | | | | |
| K10 Includes heavy duty front and rear shock absorbers | 27 | 0 | F60 | N.A. | 76.00 |
| K20 | 27 | 0 | F60 | N.A. | 48.00 |
| <i>Rear, Heavy-Duty.</i> Capacity 2600-lb each. C20 series only. Not available on C6P HD Chassis or K20 series. | | | | | |
| | 0 | 17 | G50 | N.A. | 45.00 |
| <i>Rear, Extra Capacity.</i> Capacity 2850-lb each. C20 series only. Standard on C6P HD Chassis or K20 | | | | | |
| | 0 | 29 | G51 | N.A. | 49.00 |
| Stabilizers: | | | | | |
| <i>Front, 1" diameter.</i> C10-20 series only. Standard on C6P HD Chassis. Included on C10 series when AS3 Seats are specified. | | | | | |
| | 20 | 0 | F59 | N.A. | 28.00 |
| <i>Front, Heavy-Duty, 1.25" diameter.</i> C20 series only. Standard on K10-20 series | | | | | |
| Without C6P HD Chassis | 26 | 0 | F58 | N.A. | 44.00 |
| With C6P HD Chassis | 6 | 0 | F58 | N.A. | 16.00 |

(a) D & H Charges on vehicle and optional equipment include reimbursement to Chevrolet Motor Division for any tax that it has paid, incurred or agreed to pay thereon.
 ◇ State and local taxes not included.

SUBURBAN

OPTIONS AND ACCESSORIES WHEN INSTALLED BY CHEVROLET

Prices shown are effective with vehicles produced on and after January 2, 1980

| Description | Added Weight (F R) | Option Number | Factory D&H(a) | List Price | Mfr's Suggested Retail Price ◊ |
|--|-----------------------|---------------|----------------|------------|--------------------------------|
| OTHER OPTIONS | | | | | |
| Steering, Power: Standard on K10-20 series. Included when Z82 Trailering Special is specified. | 29 0 | N41 | N.A. | 211.00 | 211.00 |
| Steering Wheels: | | | | | |
| <i>Comfortilt.</i> Available only when MM4 4-speed manual or MX1 Automatic Transmission is specified. | | | | | |
| With MX1 Automatic Transmission | 2 0 | N33 | N.A. | 83.00 | 83.00 |
| With MM4 4-speed transmission | 3 1 | N33 | N.A. | 83.00 | 83.00 |
| <i>Custom.</i> Includes 18" steering wheel. Included when YE9 Silverado is specified. | 0 0 | N31 | N.A. | 16.00 | 16.00 |
| Tank, Fuel: Replaces production fuel tank. | | | | | |
| <i>Approximately 31-Gallon Capacity</i> | -7 48 | NK7 | N.A. | 35.00 | 35.00 |
| <i>Approximately 40-Gallon Capacity</i> | -15 124 | NE2 | N.A. | 82.00 | 82.00 |
| Tires: See following pages | | | | | |
| Towing Device: Two front towing hooks. K10-20 series only | 11 -2 | V76 | N.A. | 32.00 | 32.00 |
| Trailer Hitch: | | | | | |
| <i>Deadweight Type</i> | -9 30 | VR2 | N.A. | 46.00 | 46.00 |
| <i>Weight Distributing Platform Type</i> | -21 69 | VR4 | N.A. | 130.00 | 130.00 |
| Trailering Special: Available only when MM4 4-speed or MX1 Automatic Transmission is specified. MM4 4-speed transmission available only when V01 HD Radiator is specified unless C60 Front Air Conditioning or C69 Front and Rear Air Conditioning is specified. Includes UA1 HD Battery and Trailering Special emblem. | | | | | |
| | | | | | |
| C10-20 series only. Also includes N41 Power Steering. C10 series available only when F59 Stabilizer Bar and AT5 or AS3 Seats are specified. | | | | | |
| Without V10 Cold-Climate Package, C60 Front or C69 Front and Rear Air Conditioning. Also includes K81 63-Amp Generator. | 31 0 | Z82 | N.A. | 304.00 | 304.00 |
| With V10 Cold-Climate Package or C60 Front Air Conditioning. Also includes K81 63-Amp Generator. | 31 0 | Z82 | N.A. | 257.00 | 257.00 |
| With C69 Front and Rear Air Conditioning | 31 0 | Z82 | N.A. | 252.00 | 252.00 |
| K10-20 series only. K10 series also available only when 1843-lb capacity or larger tires are specified. | | | | | |
| Without V10 Cold-Climate Package, C60 or C69 Front and Rear Air Conditioning. Also includes K81 63-Amp Generator. | 2 0 | Z82 | N.A. | 93.00 | 93.00 |
| With V10 Cold-Climate Package or C60 Front Air Conditioning. Also includes K81 63-Amp Generator. | 2 0 | Z82 | N.A. | 46.00 | 46.00 |
| With C69 Front and Rear Air Conditioning. | 2 0 | Z82 | N.A. | 41.00 | 41.00 |
| Wheel Trim: Bright Metal. | | | | | |
| <i>Trim Rings.</i> Not available when 7.50R-16 tires are specified. Included when N67 Rally Wheels are specified. | | | | | |
| Included when N67 Rally Wheels are specified | 2 2 | P06 | N.A. | 46.00 | 46.00 |
| Wheel Covers: | | | | | |
| C10 series only. | 1 1 | P01 | N.A. | 25.00 | 25.00 |
| C20 series only. Not available when 7.50R-16 tires are specified. | 1 1 | P01 | N.A. | 70.00 | 70.00 |
| K10 series only. | 3 3 | P01 | N.A. | 25.00 | 25.00 |
| K20 series only. | 3 3 | P01 | N.A. | 70.00 | 70.00 |
| Wheels: C-K10 series only | | | | | |
| <i>Aluminum, Forged</i> Available only when P235 /75R-15 tires are specified. | | | | | |
| C10 series only. | -2 -2 | PH7 | N.A. | 370.00 | 370.00 |
| K10 series only. | -7 -8 | PH7 | N.A. | 370.00 | 370.00 |
| <i>Rally.</i> Includes special hub caps and P06 Trim Rings. | | | | | |
| C10 series only. | 3 3 | N67 | N.A. | 90.00 | 90.00 |
| K10 series only. | 3 3 | N67 | N.A. | 90.00 | 90.00 |
| <i>Styled.</i> C-K10 series only. | 2 32 | PA6 | N.A. | 181.00 | 181.00 |
| Windows: Electric. | | | | | |
| <i>Power Side Door Glass:</i> Included when ZQ2 Operating Convenience Package is specified. | | | | | |
| Included when ZQ2 Operating Convenience Package is specified. | 9 6 | A31 | N.A. | 230.00 | 230.00 |
| <i>Power Tailgate:</i> Available only when E55 tailgate is specified. | | | | | |
| Available only when E55 tailgate is specified. | -3 10 | A33 | N.A. | 69.00 | 69.00 |

(a) D & H Charges on vehicle and optional equipment include reimbursement to Chevrolet Motor Division for any tax that it has paid, incurred or agreed to pay thereon.
 ◊ State and local taxes not included.

SUBURBAN

FACTORY INSTALLED TIRES

See Tire Chart for Available Front/Rear Combinations.
Spare tire available to match either front or rear tires.
Prices shown are effective with vehicles produced on and after January 2, 1980

| Tire Size and Type | Rim Width Included in Tire Option | Added Weight (F) (R) | | Option Number | Factory D&H(a) | List Price | Mfr's Suggested Retail Price ◊ |
|--|--|----------------------------|----|------------------|-------------------|----------------------|---|
| Tires | | | | | | | |
| C-K10 series | | | | | | | |
| TUBELESS | | | | | | | |
| <i>P215 /75R15 Highway Steel Belted Radial Ply Blackwall.</i> | | | | | | | |
| (Maximum Capacity 1583 lbs.) | | | | | | | |
| K10 series only. | | | | | | | |
| Front (Standard) | 6.00 | 0 | 0 | XKT | | NO ADDITIONAL CHARGE | |
| Rear (Standard) | 6.00 | 0 | 0 | YKT | | NO ADDITIONAL CHARGE | |
| Spare (Standard) | 6.00 | 0 | 0 | ZKT | | NO ADDITIONAL CHARGE | |
| <i>P215 /75R15 Highway Steel Belted Radial Ply White Stripe</i> | | | | | | | |
| (Maximum Capacity 1583 lbs.) | | | | | | | |
| K10 series only. | | | | | | | |
| Front | 6.00 | 0 | 0 | XKU | N.C. | 22.00 | 22.00 |
| Rear | 6.00 | 0 | 0 | YKU | N.C. | 22.00 | 22.00 |
| Spare | 6.00 | 0 | 0 | ZKU | N.C. | 11.00 | 11.00 |
| <i>P235 /75R15 Highway Steel Belted Radial Ply Blackwall</i> | | | | | | | |
| (Maximum Capacity 1843 lbs.) | | | | | | | |
| Front | | | | | | | |
| C10 series only (Standard) | 6.00 | 0 | 0 | XBD | | NO ADDITIONAL CHARGE | |
| K10 series only | 6.00 | 6 | 0 | XBD | .60 | 36.00 | 36.60 |
| Rear | | | | | | | |
| C10 series only (Standard) | 6.00 | 0 | 0 | YBD | | NO ADDITIONAL CHARGE | |
| K10 series only | 6.00 | 0 | 6 | YBD | .60 | 36.00 | 36.60 |
| Spare | | | | | | | |
| C10 series only (Standard) | 6.00 | 0 | 0 | ZBD | | NO ADDITIONAL CHARGE | |
| K10 series only | 6.00 | -1 | 4 | ZBD | .30 | 18.00 | 18.30 |
| <i>P235 /75R15 On-Off Road Steel Belted Radial Ply Blackwall</i> | | | | | | | |
| (Maximum Capacity 1843 lbs.) | | | | | | | |
| Front. K10 series only | | | | | | | |
| | 6.00 | 12 | 0 | XQJ | .76 | 50.00 | 50.76 |
| Rear | | | | | | | |
| C10 series only | 6.00 | 0 | 6 | YQJ | .16 | 14.00 | 14.16 |
| K10 series only | 6.00 | 0 | 12 | YQJ | .76 | 50.00 | 50.76 |
| Spare | | | | | | | |
| C10 series only | 6.00 | -11 | 42 | ZQJ | .08 | 7.00 | 7.08 |
| K10 series only | 6.00 | -1 | 9 | ZQJ | .38 | 25.00 | 25.38 |
| <i>P235 /75R15 Highway Steel Belted Radial Ply White Stripe</i> | | | | | | | |
| (Maximum Capacity 1843 lbs.) | | | | | | | |
| Front | | | | | | | |
| C10 series only | 6.00 | 0 | 0 | XBJ | N.C. | 28.00 | 28.00 |
| K10 series only | 6.00 | 6 | 0 | XBJ | .60 | 64.00 | 64.60 |
| Rear | | | | | | | |
| C10 series only | 6.00 | 0 | 0 | YBJ | N.C. | 28.00 | 28.00 |
| K10 series only | 6.00 | 0 | 6 | YBJ | .60 | 64.00 | 64.60 |
| Spare | | | | | | | |
| C10 series only | 6.00 | 0 | 0 | ZBJ | N.C. | 14.00 | 14.00 |
| K10 series only | 6.00 | -1 | 4 | ZBJ | .30 | 32.00 | 32.30 |
| <i>P235 /75R15 XL Highway Steel Belted Radial Ply Blackwall</i> | | | | | | | |
| (Maximum Capacity 1984 lbs.) | | | | | | | |
| Front | | | | | | | |
| C10 series only | 6.00 | 0 | 0 | XPR | .14 | 12.00 | 12.14 |
| K10 series only | 6.00 | 6 | 0 | XPR | .74 | 48.00 | 48.74 |
| Rear | | | | | | | |
| C10 series only | 6.00 | 0 | 0 | YPR | .14 | 12.00 | 12.14 |
| K10 series only | 6.00 | 0 | 6 | YPR | .74 | 48.00 | 48.74 |
| Spare | | | | | | | |
| C10 series only | 6.00 | 0 | 0 | ZPR | .07 | 6.00 | 6.07 |
| K10 series only | 6.00 | -1 | 4 | ZPR | .37 | 24.00 | 24.37 |

(a) D & H Charges on vehicle and optional equipment include reimbursement to Chevrolet Motor Division for any tax that it has paid, incurred or agreed to pay thereon.
◊ State and local taxes not included.

SUBURBAN

FACTORY INSTALLED TIRES

See Tire Chart for Available Front/Rear Combinations.
Spare tire available to match either front or rear tires.
Prices shown are effective with vehicles produced on and after January 2, 1980

| Tire Size and Type | Rim Width Included in Tire Option | Added Weight (F) (R) | | Option Number | Factory D&H(a) | List Price | Mfr's Suggested Retail Price ◊ |
|--|-----------------------------------|----------------------|----|---------------|----------------------|------------|--------------------------------|
| P235 /75R15 XL Highway Steel Belted Radial Ply White Stripe (Maximum Capacity 1984 lbs.) | | | | | | | |
| Front | | | | | | | |
| C10 series only..... | 6.00 | 0 | 0 | XPW | .14 | 40.00 | 40.14 |
| K10 series only..... | 6.00 | 8 | 0 | XPW | .74 | 76.00 | 76.74 |
| Rear | | | | | | | |
| C10 series only..... | 6.00 | 0 | 0 | YPW | .14 | 40.00 | 40.14 |
| K10 series only..... | 6.00 | 0 | 8 | YPW | .74 | 76.00 | 76.74 |
| Spare | | | | | | | |
| C10 series only..... | 6.00 | 0 | 0 | ZPW | .07 | 20.00 | 20.07 |
| K10 series only..... | 6.00 | -1 | 4 | ZPW | .37 | 38.00 | 38.37 |
| LR78-15 /C Highway Steel Belted Radial Ply Blackwall (Maximum Capacity 1905-lbs) | | | | | | | |
| C-K20 Series | | | | | | | |
| TUBELESS | | | | | | | |
| 7.50R-16 /D Highway Steel Belted Radial Ply Blackwall (Maximum Capacity 2440-lbs) | | | | | | | |
| Rear. C20 series only..... | 6.50 | 0 | 0 | YWX | 1.60 | 44.00 | 45.60 |
| Spare..... | 6.50 | 21 | 49 | ZWX | 4.75 | 212.00 | 216.75 |
| 7.50R16 /D On-Off Road Steel Belted Radial Ply Blackwall (Maximum Capacity 2440-lbs) | | | | | | | |
| Front..... | 6.50 | 0 | 0 | XWY | 1.08 | 2.00 | 3.08 |
| Rear..... | 6.50 | 0 | 0 | YWY | 1.08 | 2.00 | 3.08 |
| Spare..... | 6.50 | 21 | 49 | ZWY | 4.49 | 191.00 | 195.49 |
| 8.75R16.5 /C Highway Steel Belted Radial Ply Blackwall (Maximum Capacity 1990 lbs.) | | | | | | | |
| C20 series only. Available only when LS9 5.7 Liter 4 BBL V8 engine is specified. | | | | | | | |
| Front. (Standard)..... | 6.00 | 0 | 0 | XWU | NO ADDITIONAL CHARGE | | |
| Rear. (Standard)..... | 6.00 | 0 | 0 | YWU | NO ADDITIONAL CHARGE | | |
| Spare..... | 6.00 | -16 | 86 | ZWU | 3.95 | 190.00 | 193.95 |
| 8.75-16.5 /D Highway Steel Belted Radial Ply Blackwall (Maximum Capacity 2350 lbs.) | | | | | | | |
| C20 series only Not available when C6P HD Chassis is specified. | | | | | | | |
| Front..... | 6.00 | 8 | 0 | XRU | .58 | 24.00 | 24.58 |
| Rear..... | 6.00 | 0 | 8 | YRU | .58 | 24.00 | 24.58 |
| Spare..... | 6.00 | -17 | 90 | ZRU | 4.24 | 202.00 | 206.24 |
| 8.75R16.5 /D On-Off Road Steel Belted Radial Ply Blackwall (Maximum Capacity 2350 lbs.) | | | | | | | |
| C20 series only Not available when C6P HD Chassis is specified. | | | | | | | |
| Rear..... | 6.00 | 0 | 18 | YVX | .58 | 60.00 | 60.58 |
| Spare..... | 6.00 | 18 | 96 | ZVX | 4.24 | 220.00 | 224.24 |

(a) D & H Charges on vehicle and optional equipment include reimbursement to Chevrolet Motor Division for any tax that it has paid, incurred or agreed to pay thereon.
◊ State and local taxes not included.

SUBURBAN

FACTORY INSTALLED TIRES

See Tire Chart for Available Front/Rear Combinations.
Spare tire available to match either front or rear tires.
Prices shown are effective with vehicles produced on and after January 2, 1980

| Tire Size and Type | Rim Width Included In Tire Option | Added Weight (F) (R) | | Option Number | Factory D&H(a) | List Price | Mfr's Suggested Retail Price ◊ |
|---|-----------------------------------|----------------------|-----|---------------|----------------------|------------|--------------------------------|
| 9.50R16.5 /D Highway Steel Belted Radial Ply Blackwall (Maximum Capacity 2780 lbs.) | | | | | | | |
| C20 series only Not available when C6P HD Chassis is specified. | | | | | | | |
| Front | 6.75 | 31 | 0 | XUK | 2.02 | 68.00 | 70.02 |
| Rear | 6.75 | 0 | 31 | YUK | 2.02 | 68.00 | 70.02 |
| Spare | 6.75 | -20 | 105 | ZUK | 4.96 | 224.00 | 228.96 |
| 9.50R16.5 /D On-Off Steel Belted Radial Ply Blackwall (Maximum Capacity 2780 lbs.) | | | | | | | |
| Not available when C6P HD Chassis is specified. | | | | | | | |
| Rear | 6.75 | 0 | 40 | YVY | 2.02 | 106.00 | 108.02 |
| Spare | 6.75 | -21 | 110 | ZVY | 4.96 | 243.00 | 247.96 |
| 9.50-16.5 /D Highway Polyester Blackwall (Maximum Capacity 2780 lbs.) | | | | | | | |
| Front | | | | | | | |
| C20 series only (Standard) Available only when C6P HD Chassis is specified. | | | | | | | |
| K20 series only (Standard) | 6.75 | 25 | 0 | XUF | NO ADDITIONAL CHARGE | | |
| Spare | 6.75 | 0 | 0 | XUF | NO ADDITIONAL CHARGE | | |
| Spare | 6.75 | -19 | 101 | ZUF | 4.49 | 176.00 | 180.49 |
| 9.50-16.5 /E Highway Polyester Blackwall (Maximum Capacity 3170 lbs.) | | | | | | | |
| Front | | | | | | | |
| C20 series only. Available only when C6P HD Chassis is specified. | | | | | | | |
| K20 series only. | 6.75 | 16 | 0 | XUC | .78 | 28.00 | 28.78 |
| Rear | 6.75 | 7 | 0 | XUC | .78 | 28.00 | 28.78 |
| C20 series only (Standard) Available only when C6P HD Chassis is specified. | | | | | | | |
| K20 series only (Standard) | 6.75 | 0 | 16 | YUC | NO ADDITIONAL CHARGE | | |
| Spare | 6.75 | 0 | 28 | YUC | NO ADDITIONAL CHARGE | | |
| C20 series only. Available only when C6P HD Chassis is specified. | | | | | | | |
| K20 series only. | 6.75 | -18 | 96 | ZUC | 4.88 | 190.00 | 194.88 |
| K20 series only. | 6.75 | -19 | 103 | ZUC | 4.88 | 190.00 | 194.88 |
| 9.50-16.5 /E On-Off Road Nylon (Maximum Capacity 3170 lbs.) | | | | | | | |
| Front. K20 series only | | | | | | | |
| Front. K20 series only | 6.75 | 28 | 0 | XUH | 1.10 | 50.00 | 51.10 |
| Rear | | | | | | | |
| C20 series only. Available only when C6P HD Chassis is specified. | | | | | | | |
| K20 series only. | 6.75 | 0 | 16 | YUH | .32 | 22.00 | 22.32 |
| K20 series only. | 6.75 | 0 | 9 | YUH | .32 | 22.00 | 22.32 |
| Spare | 6.75 | -19 | 103 | ZUH | 5.04 | 201.00 | 206.04 |
| TUBETYPE | | | | | | | |
| 7.50R16 /D Highway Steel Belted Radial Ply Blackwall (Maximum Capacity 2440 lbs.) | | | | | | | |
| C20 series only. Not available when C6P HD Chassis is specified. | | | | | | | |
| Front | 6.50 | 25 | 05 | XVK | 1.82 | 22.00 | 23.82 |
| Rear | 6.50 | 0 | 25 | YVK | 1.82 | 22.00 | 23.82 |
| Spare | 6.50 | -19 | 101 | ZVK | 4.86 | 201.00 | 205.86 |
| 7.50R16 /D On-Off Road Steel Belted Radial Ply Blackwall (Maximum Capacity 2440 lbs.) | | | | | | | |
| C20 series only. Not available when C6P HD Chassis is specified. | | | | | | | |
| Rear | 6.50 | 0 | 34 | YVP | 2.04 | 64.00 | 66.04 |
| Spare | 6.50 | -20 | 107 | ZVP | 4.97 | 222.00 | 226.97 |

(a) D & H Charges on vehicle and optional equipment include reimbursement to Chevrolet Motor Division for any tax that it has paid, incurred or agreed to pay thereon.
◊ State and local taxes not included.

NOTES

SUBURBAN

**CAB & BODY FEATURES
CAB DIMENSIONS
SEATING ARRANGEMENTS
COLOR & TRIM CHARTS
TWO-TONES**

SUBURBAN

CUSTOM DELUXE FEATURES—STANDARD MODEL

The Custom Deluxe standard models include the following items as standard equipment



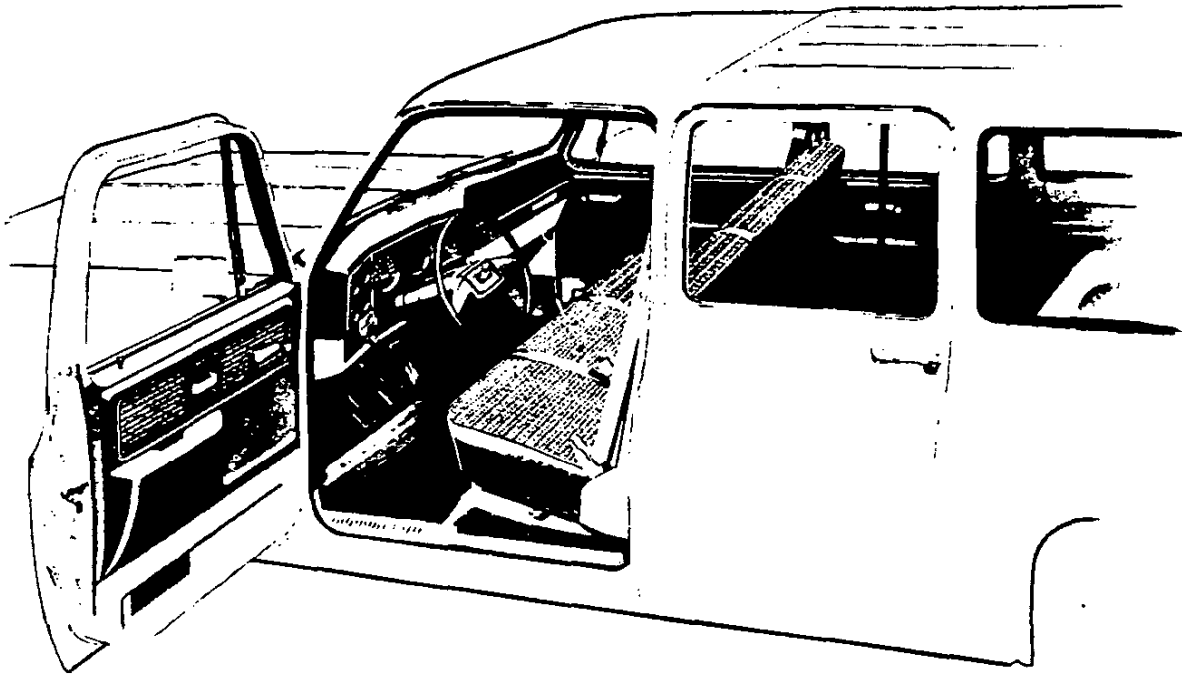
EXTERIOR

- **Bumpers:** Front and rear; painted white
- **Color:** See Interior and Exterior Color Selection Chart
- **Doors:** Four side doors: two LH and two RH; two rear panel doors (optional endgate with drop-glass available)
- **Grille:** Molded plastic; painted argent; integral Chevrolet emblem at center includes bright insert with ochre trim
- **Grille Frame:** Bright headlamp/parking lamp bezels plus bright upper and lower moldings joining extensions of lamp bezels; dark gray-painted bezel centers in headlamp area
- **Horn:** Single, electric, low-note
- **Hub Caps:** Bright metal with black and ochre trim
- **Keys:** Two-key system with separate keys for ignition switch and door locks
- **Lights:**
 - Backup lamps: Two rear (integral with taillamps)
 - Combination parking/direction/hazard: Two front
 - Combination tail/stop/direction/hazard: Two rear
 - Headlamps: Two; Power Beam
 - License plate lamp: Single rear
 - Side marker lamps with reflectors: Two front; two rear (integral with taillamps)
- **Mirrors:** RH and LH fixed arm with adjustable 5½" x 4" head; chrome finish
- **Moldings:** Bright; drip moldings over side and rear doors plus decorative molding at hood rear edge
- **Nameplates:** Bright "Custom Deluxe" nameplates, with series designation, on upper portions of front fenders near doors; bright "Suburban" nameplate on RH rear door
- **Tools:** Mechanical jack and wheel wrench
- **Wheels:** Painted white
- **Windshield Wipers and Washers:** Electric, 2-speed wipers with matte finish on exposed metal portions; partially concealed arms; coordinated dual-orifice washers

SUBURBAN

CUSTOM DELUXE FEATURES—STANDARD MODEL

The Custom Deluxe standard models include the following items as standard equipment



INTERIOR

- **Armrests:** RH and LH padded; integral with side door trim panels
- **Ashtrays:** In middle of instrument panel and in rear side door trim panels
- **Coat Hooks:** Over RH and LH rear side door openings
- **Colors:**
Painted areas: Same as exterior primary color choice
Interior trim: Coordinated with seat trim color choice
- **Floor Covering:** Embossed black rubber mats over entire floor area
- **Heater and Defogger:** Deluxe-air; automatic blower operation with ignition switch on for power ventilation system
- **Instrument Cluster Bezel:** Black with bright trim
- **Instruments:**
Gages: Speedometer, odometer and fuel
Switches: Main, for control of exterior lights, instrument cluster lights, and cab interior lights; wiper-washer; headlight beam (foot); ignition; direction signal (with lane change position); hazard warning; heater fan
Warning lights: Generator, oil pressure, engine temperature, seat belt, service-parking brake, direction/hazard signal, high beam
- **Instrument Panel Control Knobs:** Soft black plastic with white graphic identification (except heater and wiper-washer controls)
- **Instrument Panel Pad:** Color-keyed, energy-absorbing foam type with grained vinyl skin; has bright applique on RH side with black insert, black trim and bright "Custom Deluxe" nameplate
- **Insulation and Sound Deadening Material:** Dash (firewall), under floor mats and under front seat; at center (includes extra-thick insulation in center seat area when optional seat is ordered)
- **Lights:** Instrument cluster and cab interior lights
- **Mirror, Rearview:** 10" prismatic with soft vinyl rim
- **Sill Plates:** Door-opening protection and floor mat retention; bright metal; partial for front side doors, full-length for rear side doors, and full-width front and rear for rear compartment platform
- **Seat:** Full-width bench-type front seat only with full-depth foam padded seat cushion and houndstooth pattern vinyl trim. See Interior and Exterior Color Selection Chart for color availability
- **Seat Belts:** Front only; non-detachable combination lap and shoulder belts for outboard position; with automatic-locking retractors on lap belts, emergency-locking retractors on shoulder belts, and switch in driver's lap belt retractor for buzzer warning system; lap belt with manual adjustment for center position. All seat belts are color-keyed with pushbutton type buckles
- **Spare Tire Carrier:** LH rear side
- **Steering Wheel and Column:** 16" black, soft plastic wheel with 2 spokes; black energy-absorbing steering column with anti-theft locking feature
- **Storage Box:** In RH side of instrument panel; door has bright turn-type latch release
- **Sunshades:** RH and LH padded; color-keyed
- **Trim Panels:** Color-keyed, embossed molded plastic on side doors with integrd armrests; painted wheel panels on rear quarter areas

SUBURBAN

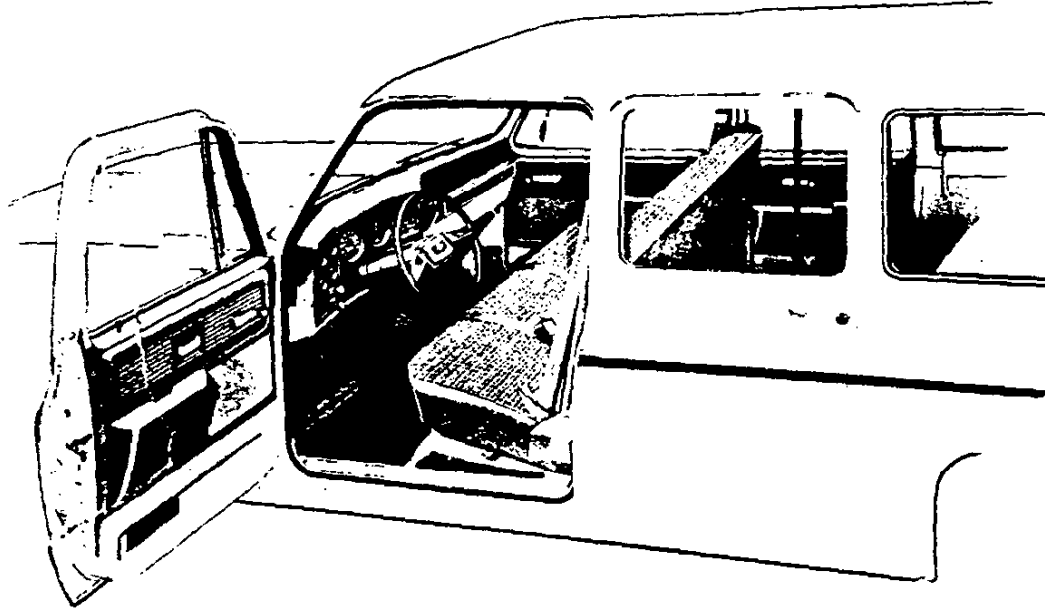
SCOTTSDALE MODEL OPTION—RPO Z62

This option includes all Custom Deluxe standard model items plus the additions or substitutions listed below



EXTERIOR

- **Bright Appearance Items:**
 - "Scottsdale" nameplates, with series designation, on front fenders
 - Body side upper spear molding trim
 - Front and rear bumpers
- Side marker lamp and taillamp trim
- Windshield reveal moldings
- Rear side window trim
- **Horn:** Additional, electric, high-note
- **Moldings:** Spear-type black plastic body side upper moldings



INTERIOR

- **Bright Appearance Items:**
 - "Scottsdale" nameplate on instrument panel pad
 - Dome lamp trim
 - Full-length front door sill scuff plates
- **Cigar Lighter:** With ashtray light
- **Dome Lamps:** Two; one front, one rear
- **Dome and Courtesy Lamp Switches:** Front side door actuated (dome and courtesy lamps also may be activated by main light switch)
- **Floor Covering:** Color-keyed rubber mat in front seat area (also in center and rear seat areas when optional center seat is ordered)
- **Headliner:** Full-length, mystic colored, perforated molded plastic with fiber glass blanket backing; includes matching retainer moldings
- **Insulation:** Under cowl panel and on headliner
- **Pillar Trim Panels:** Mystic colored molded plastic on windshield pillars and center door pillars
- **Seats:** Choice of: 1) houndstooth pattern vinyl trim (standard); 2) hobnail pattern velour cloth and vinyl trim (at extra cost) or 3) all-vinyl brahman grain trim (at extra cost). See Interior and Exterior Color Selection Chart for color availability
- **Sill Plates:** Full-length bright metal for front side doors
- **Spare Tire Cover:** Color-keyed carpet
- **Sunshades:** Mystic colored to match headliner

SUBURBAN

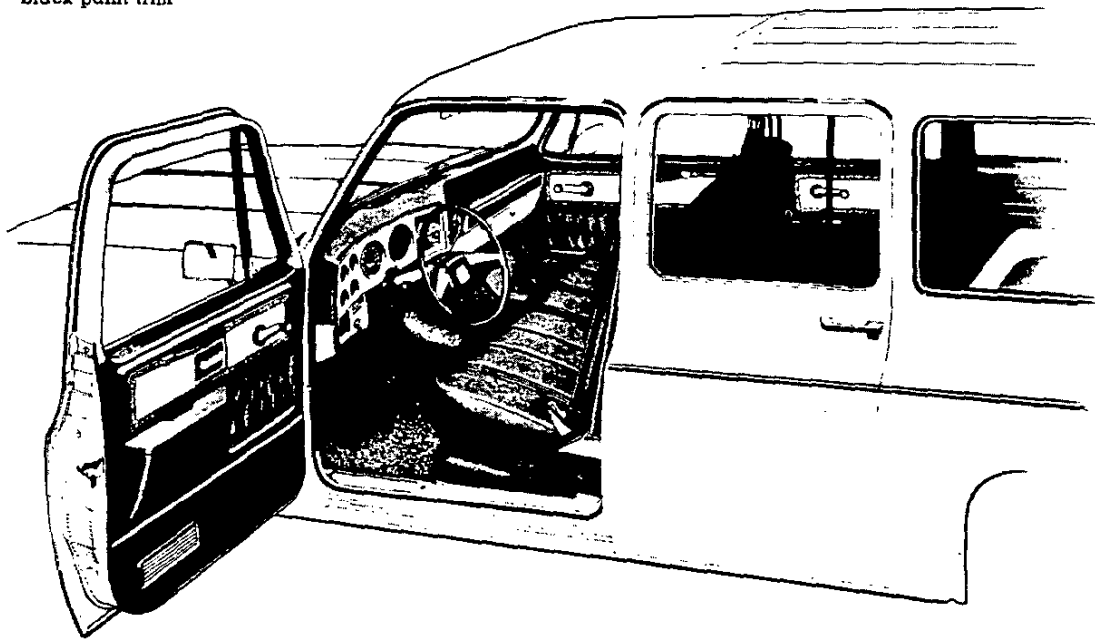
SILVERADO MODEL OPTION—RPO YE9

This option includes all items in the Scottsdale model option plus the additions or substitutions listed below



EXTERIOR

- **Bright Appearance Items:**
 "Silverado" nameplates, with series designation, on front fenders
 Chromed grille insert
 Upper body side and rear door (or tailgate) moldings with black paint trim
- **Body-to-Fender Insulators**
- **Hood Insulator**
- **Secondary Door Seals:** On side door upper frames
- **Special Headlamps:** Rectangular; single RH and LH

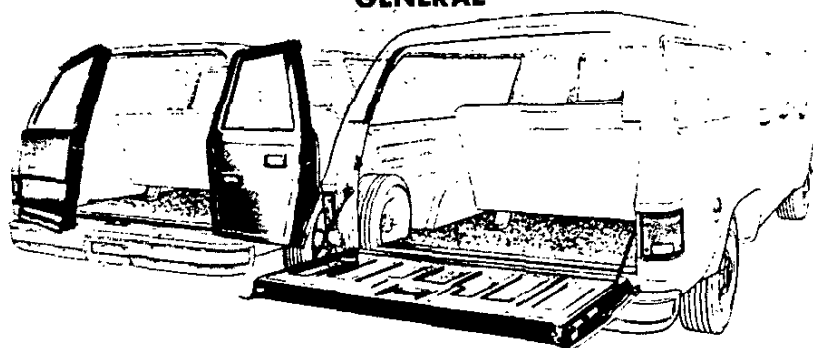


INTERIOR

- **Bright Appearance Items:**
 "Silverado" nameplate on instrument panel pad
 Four-speed transmission shift lever
 Transfer case shift lever (K10-20 models with 4WD)
 Trim on instrument cluster bezel, instrument panel pad applique, side door trim panels, and on horn button
- **Colors:** Choice of single or two-tone interior color scheme
- **Cowl Panel Trim:** Color-keyed molded plastic.
- **Floor Covering:** Color-keyed carpeting; front seat area (also in center and rear seat areas and on wheelhouses when optional center seat is ordered)
- **Instrument Cluster:** Voltmeter, engine temperature gage, and oil pressure gage replace warning lights; includes bright brush-finished bezel
- **Instrument Panel Pad Applique:** Bright with brush-finished insert and black trim
- **Insulation:** Extra-thick front compartment floor insulators, including full-width insulator under front seat (also in center and rear seat areas when optional center seat is ordered)
- **Seats:** Choice of: 1) all-vinyl brahman grain trim or 2) hobnail pattern velour cloth and vinyl trim. See Interior and Exterior Color Selection Chart for color availability
- **Side Door Trim Panels:** Color-keyed molded plastic (with door closing assist strap and vinyl storage pockets on front door units only); includes bright brush-finished inserts having bright borders with tooled leather pattern trim plus carpeting on lower portions
- **Steering Wheel:** Bright trim on horn button
- **Visor Mirror:** On RH sun visor

SUBURBAN GENERAL

With Panel
Rear Doors
Body Ordering
Code ZW9*



With Tailgate
and Manual Drop
Glass
Body Ordering
Code E55*

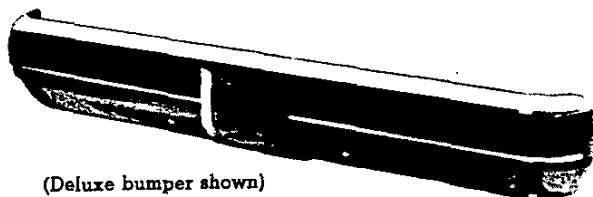
Suburban models have 4 side doors, two front and two rear. Front side doors are equipped with drop-glass and ventipane assemblies; the rear side doors have a drop-glass in the forward portion and fixed glass in the rear portion. The rear quarter windows have fixed glass.

Suburbans ordered with Body Ordering Code ZW9 have panel-type rear doors incorporating fixed glass, positive fork-cam latches, and an outside key lock. A 2-position, strap-type check on each door permits either a 118- or 162-degree door opening, depending on how the retaining pin is positioned; full door opening of 172-degrees is obtained by removing the retaining pin.

Suburbans ordered with Body Ordering Code E55 have a tailgate with a manually-controlled curved drop glass. Operation of the window is through an articulated crank-type regulator handle on the tailgate outer panel; a key lock cylinder is concealed in the regulator handle, and must be unlocked before the window can be lowered. After the window is lowered, the tailgate can be lowered by moving the release handle at the upper center of the tailgate inner panel. When the tailgate is open, it is supported by reel-type cables. Embossments on the tailgate inner panel facilitate loading of large objects. An optional electric tailgate window is available by ordering RPO A33.

*Both models shown with optional folding center and removable rear seats

CUSTOM OPTIONS



(Deluxe bumper shown)

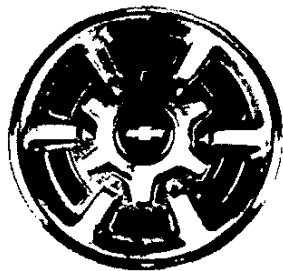
Chromed Bumpers & Deluxe Chromed Bumpers (RPO V37, VES)

Chromed bumpers (RPO V37) and Deluxe chromed bumpers (RPO VES) with resilient impact strips are available optionally on all Suburban models.



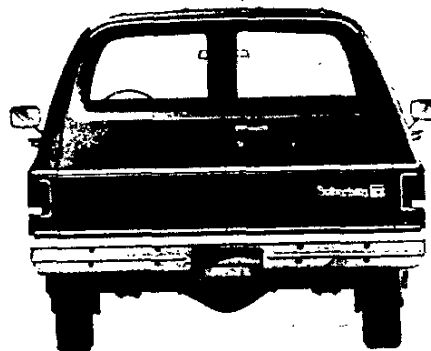
Custom Trim Moldings (RPO B84, B85, YG1)

Side and rear upper trim moldings (RPO B85) or side and rear upper and lower and wheel opening trim moldings (RPO YG1) of bright metal are offered on all Suburban models plus upper body side spear moldings (RPO B84) of black plastic with bright trim. RPO's B85 and YG1 include bright trim for side marker and taillamps.



Wheel Covers (RPO P01)

Stainless steel wheel covers are available on all Suburban models. The front units for K10-20 models with 4WD have a cut-out at the center to clear the axle hubs.

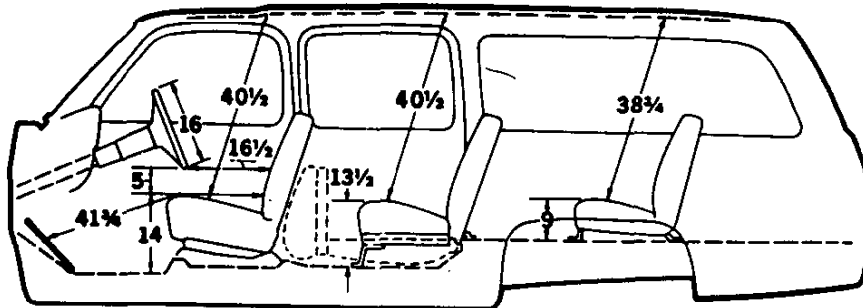


Wood Grained Exterior Trim (RPO YG2)

Wide wood grained applique mounted to entire length of body side panels, doors, front fenders and rear doors or tailgate between included upper and lower moldings (RPO YG1). Also includes "Estate" nameplates on body sides at center rear.

SUBURBAN

DIMENSIONS



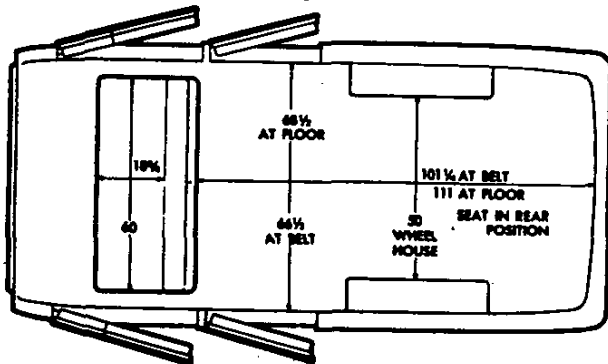
GLASS AREA (Sq. in.)

Windshield.....1447
 Front side door, including
 ventipane (each side)..... 546
 Rear side door (each side)..... 488

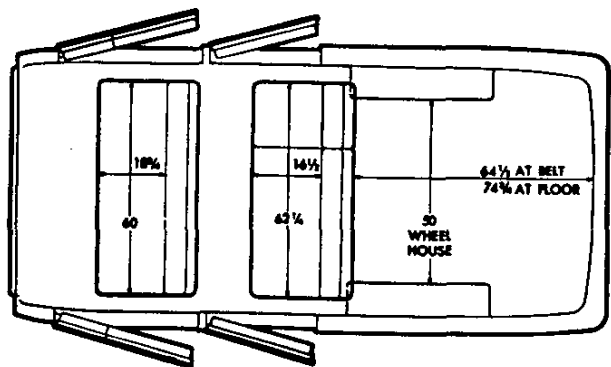
Side rear window (each side) .. 1074
 Rear:
 ZW9 panel doors (total)..... 654
 E55 tailgate.....1041

SEATING ARRANGEMENTS

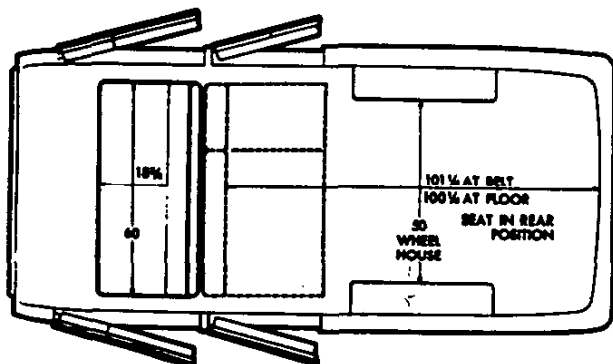
Front Seat
 Standard full-depth foam front seat



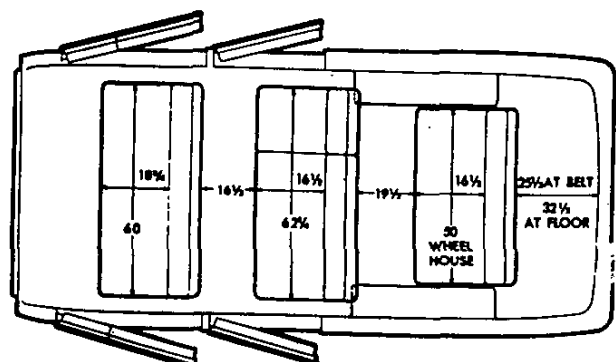
Front and Folding Center Seats
 Standard front and RPO AT5 folding center seats



Front and Folding Center Seats
 Standard front and RPO AT5 folding center seats
 (Center seats shown in folded position)



Front, Folding Center And Rear Removable Seats
 Standard front, RPO AT5 folding center and
 RPO AS3 removable rear seats



SINGLE TONE INTERIOR

SUBURBAN

INTERIOR AND EXTERIOR COLOR AVAILABILITY CHART

Please Note: Exterior and interior paint combinations shown in chart below are those recommended by Chevrolet. Any exterior color combination may be ordered with any available seat trim if the particular combination is desired by a customer.

| SEAT TRIM | | | MODEL OPTION | | | SEAT TRIM COLOR AND ORDERING CODE | | |
|---------------------------------|-------|--------|---------------|----------------|----------------------------------|-----------------------------------|---------|-----------|
| Fabric | ▲Code | Type | Custom Deluxe | Scottsdale Z62 | Silverado YE9 | Blue | Carmine | Camel Tan |
| Standard Vinyl | V | Bench | X | X | | VDD1 | | VCC1 |
| Custom Vinyl | W | Bench | | X | X | XDD1 | XRR1e | XCC1 |
| | | Bucket | | | X | | | XCC4 |
| Custom Cloth | D | Bench | | X | X | LDD1 | LRR1e | LCC1 |
| ♦ EXTERIOR COLORS | | | Primary | Secondary | RECOMMENDED INTERIOR TRIM COLORS | | | |
| FROST WHITE | | | 12 | 12 | X | X | X | |
| Mystic Silver | | | 12 | 17 | X | X | | |
| Medium Blue | | | 12 | 23 | X | | | |
| Santa Fe Tan | | | 12 | 60 | | | X | |
| Dark Carmine Red | | | 12 | 71 | | X | | |
| Midnight Black | | | 12 | 86 | X | X | | |
| MYSTIC SILVER (Metallic) | | | 17 | 17 | X | X | | |
| Frost White | | | 17 | 12 | X | X | | |
| Dark Carmine Red | | | 17 | 71 | | X | | |
| Midnight Black | | | 17 | 86 | X | X | | |
| CHARCOAL (Metallic) | | | 18 | 18 | X | X | | |
| Frost White | | | 18 | 12 | X | X | | |
| Mystic Silver | | | 18 | 17 | X | X | | |
| Midnight Black | | | 18 | 86 | X | X | | |
| MEDIUM BLUE | | | 23 | 23 | X | | | |
| Frost White | | | 23 | 12 | X | | | |
| Mystic Silver | | | 23 | 17 | X | | | |
| LIGHT BLUE METALLIC | | | 25 | 25 | X | | | |
| Frost White | | | 25 | 12 | X | | | |
| Medium Blue | | | 25 | 23 | X | | | |
| NORDIC BLUE METALLIC | | | 30 | 30 | X | | | |
| Frost White | | | 30 | 12 | X | | | |
| Mystic Silver | | | 30 | 17 | X | | | |
| Medium Blue | | | 30 | 23 | X | | | |
| EMERALD GREEN | | | 43 | 43 | | | X | |
| Frost White | | | 43 | 12 | | | X | |
| SANTA FE TAN | | | 60 | 60 | | | X | |
| Frost White | | | 60 | 12 | | | X | |
| DARK CAMEL METALLIC | | | 62 | 62 | | | X | |
| Frost White | | | 62 | 12 | | | X | |
| Santa Fe Tan | | | 62 | 60 | | | X | |
| CAMEL METALLIC | | | 65 | 65 | | | X | |
| Frost White | | | 65 | 12 | | | X | |
| Santa Fe Tan | | | 65 | 60 | | | X | |
| CARMINE RED | | | 70 | 70 | | X | X | |
| Frost White | | | 70 | 12 | | X | X | |
| Mystic Silver | | | 70 | 17 | | X | | |
| Santa Fe Tan | | | 70 | 60 | | X | X | |
| Dark Carmine Red | | | 70 | 71 | | X | X | |
| DARK CARMINE RED | | | 71 | 71 | | X | X | |
| Frost White | | | 71 | 12 | | X | X | |
| Mystic Silver | | | 71 | 17 | | X | | |
| CARDINAL RED | | | 73 | 73 | | X | X | |
| Frost White | | | 73 | 12 | | X | X | |
| Mystic Silver | | | 73 | 17 | | X | | |
| Santa Fe Tan | | | 73 | 60 | | X | X | |
| Dark Carmine Red | | | 73 | 71 | | X | X | |
| MIDNIGHT BLACK | | | 86 | 86 | X | X | X | |
| Frost White | | | 86 | 12 | X | X | | |
| Mystic Silver | | | 86 | 17 | X | X | | |
| Santa Fe Tan | | | 86 | 60 | | | X | |
| BURNT ORANGE METALLIC | | | 95 | 95 | | | X | |
| Frost White | | | 95 | 12 | | | X | |
| Santa Fe Tan | | | 95 | 60 | | | X | |

♦ Primary color shown in **BOLDFACE TYPE**; secondary colors shown in Lightface Type. ● Available Silverado only.
 ▲ Seat Trim Codes: V—Houndstooth Pattern Vinyl; W—Brahman Grained Vinyl; D—Hobnail Pattern Velour Cloth.

SEE PAGE J FOR ZYS EXTERIOR DECOR PACKAGE ILLUSTRATION

TWO-TONE INTERIOR

SUBURBAN

INTERIOR AND EXTERIOR COLOR AVAILABILITY CHART

Please Note: Exterior and interior paint combinations shown in chart below are those recommended by Chevrolet. Any exterior color combination may be ordered with any available interior color or seat trim if the particular combination is desired by a customer.

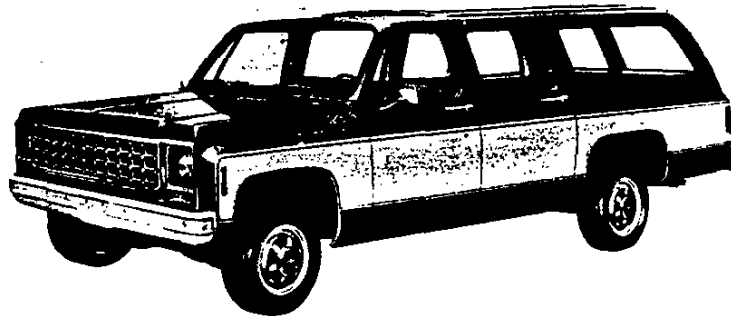
| SEAT TRIM | | | MODEL OPTION | | SEAT TRIM COLOR AND ORDERING CODE | |
|---|--------------|----------------|-------------------------|--------------------|-----------------------------------|--------|
| Fabric | ▲Code | Type | Silverado YES | | Mystic | Mystic |
| Custom Cloth | D | Bench | X | | LMD1 | LMR1 |
| EXTERIOR COLOR | | | TWO-TONE INTERIOR COLOR | | | |
| Primary Colors and Available Secondary Colors † | Primary Code | Secondary Code | Blue and Mystic | Carmine and Mystic | | |
| FROST WHITE | 12 | 12 | X | X | | |
| Mystic Silver | 12 | 17 | X | X | | |
| Medium Blue | 12 | 23 | X | | | |
| Santa Fe Tan | 12 | 60 | | | | |
| Dark Carmine Red | 12 | 71 | | | | |
| Midnight Black | 12 | 86 | X | X | | |
| MYSTIC SILVER (Metallic) | 17 | 17 | X | X | | |
| Frost White | 17 | 12 | X | X | | |
| Dark Carmine Red | 17 | 71 | | | | |
| Midnight Black | 17 | 86 | X | X | | |
| CHARCOAL (Metallic) | 18 | 18 | X | X | | |
| Frost White | 18 | 12 | X | X | | |
| Mystic Silver | 18 | 17 | X | X | | |
| Midnight Black | 18 | 86 | X | X | | |
| MEDIUM BLUE | 23 | 23 | X | | | |
| Frost White | 23 | 12 | X | | | |
| Mystic Silver | 23 | 17 | X | | | |
| LIGHT BLUE METALLIC | 25 | 25 | X | | | |
| Frost White | 25 | 12 | X | | | |
| Medium Blue | 25 | 23 | X | | | |
| NORDIC BLUE METALLIC | 30 | 30 | X | | | |
| Frost White | 30 | 12 | X | | | |
| Mystic Silver | 30 | 17 | X | | | |
| Medium Blue | 30 | 23 | X | | | |
| EMERALD GREEN | 43 | 43 | | | | |
| Frost White | 43 | 12 | | | | |
| SANTA FE TAN | 60 | 60 | | | | |
| Frost White | 60 | 12 | | | | |
| DARK CAMEL METALLIC | 62 | 62 | | | | |
| Frost White | 62 | 12 | | | | |
| Santa Fe Tan | 62 | 60 | | | | |
| CAMEL METALLIC | 65 | 65 | | | | |
| Frost White | 65 | 12 | | | | |
| Santa Fe Tan | 65 | 60 | | | | |
| CARMINE RED | 70 | 70 | | X | | |
| Frost White | 70 | 12 | | X | | |
| Mystic Silver | 70 | 17 | | X | | |
| Dark Carmine Red | 70 | 71 | | X | | |
| DARK CARMINE RED | 71 | 71 | | X | | |
| Frost White | 71 | 12 | | X | | |
| Mystic Silver | 71 | 17 | | X | | |
| CARDINAL RED | 73 | 73 | | X | | |
| Frost White | 73 | 12 | | X | | |
| Mystic Silver | 73 | 17 | | X | | |
| Dark Carmine Red | 73 | 71 | | X | | |
| MIDNIGHT BLACK | 86 | 86 | X | X | | |
| Frost White | 86 | 12 | X | | | |
| Mystic Silver | 86 | 17 | X | | | |
| Santa Fe Tan | 86 | 60 | | | | |
| BURNT ORANGE METALLIC | 95 | 95 | | | | |
| Frost White | 95 | 12 | | | | |
| Santa Fe Tan | 95 | 60 | | | | |

† Primary color shown in **BOLDFACE TYPE**; secondary colors shown in Lightface Type.
 ▲ Seat Trim Code: D—Hobnail Pattern Velour Cloth.

SEE PAGE J FOR ZYS EXTERIOR DECOR PACKAGE ILLUSTRATION

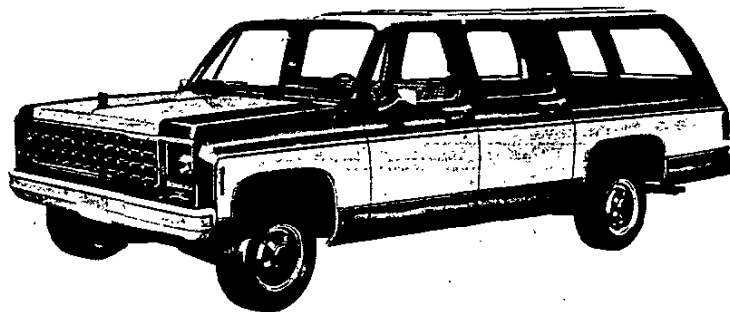
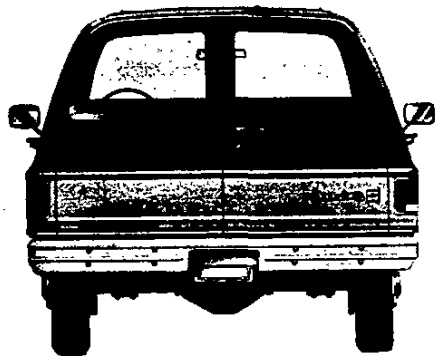
SUBURBAN

TWO-TONE EXTERIOR COLOR COMBINATIONS*



SPECIAL TWO-TONE

Special two-tone (ZY3) paint colors include custom upper and lower moldings (lower only on models with Silverado Model Option; upper is already included). The primary color is applied to the areas above and below the moldings (including the roof). The secondary color is applied to the area between these moldings.



EXTERIOR DECOR PACKAGE

Exterior Decor Package (ZY5) paint colors and trim are available in a choice of six combinations (see chart below). The package includes all the moldings and paint described under Special Two-Tone. In addition, it includes the secondary paint color choice on the hood with color-coordinated striping at either side of the hood panel, plus a bright spring-loaded, stand-up type hood emblem.

| PRIMARY COLOR | CODE | SECONDARY COLOR | CODE | INTERIOR COLOR | HOOD STRIPE COLOR |
|------------------|------|-------------------|------|---------------------|-------------------|
| Frost White | 12 | Dark Carmine Red | 71 | Carmine | Yellow to Orange |
| Charcoal (M) | 18 | Mystic Silver (M) | 17 | Mystic and Carmine† | Orange to Red |
| Nordic Blue (M) | 30 | Frost White | 12 | Blue | Blues |
| Dark Camel (M) | 62 | Santa Fe Tan | 60 | Camel Tan | Brown to Gold |
| Dark Carmine Red | 71 | Frost White | 12 | Carmine | Orange to Red |
| Cardinal Red | 73 | Dark Carmine Red | 71 | Carmine | Orange to Red |

(M) Metallic. †Two-tone interior; requires Silverado Model Option with Code D Custom Cloth seat trim.

*Optional at extra cost