

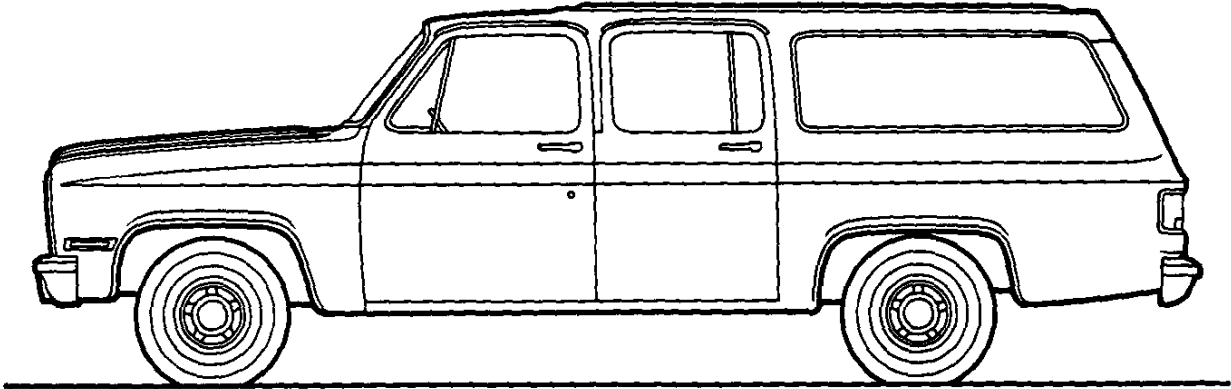


ORIGINAL

1983

# C/K SUBURBAN

## SUBURBAN MODEL SELECTOR



Series	Model Number	Body Ordering Code	
		Panel Rear Doors	Tailgate
<b>C10/1500</b>	C10906	ZW9	E55
<b>C20/2500</b>	C20906	ZW9	E55
<b>K10/1500</b> (4-Wheel Drive)	K10906	ZW9	E55
<b>K20/2500</b> (4-Wheel Drive)	K20906	ZW9	E55

# C/K SUBURBAN—2-Wheel Drive

## STANDARD SPECIFICATIONS

(See Gray Tab Section for Specification Details)

Series	C10/1500	C20/2500
<b>Engine</b>		
Base Equip. ....	■5.0 Liter, 305 4-bbl V8	5.7 Liter, 350 4-bbl. V8
Clutch .....	—	12", 150 sq. in.
Air Filter .....	Oiled-paper Element	
Oil Filter .....	Throwaway Type	
Exhaust System .....	*Single; Aluminized	
Emission Control Systems .....	See Engine & Cooling Section for specific model applications	
<b>Suspension, Front</b> .....	Independent; Coil Springs	
Capacity .....	3250 lb.	3800 lb.
Springs @ Ground .....	1625 lb. ea.	1900 lb. ea.
Shock Absorbers .....	25mm dia.	32mm dia.
Stabilizer Bar .....	—	1.06" dia.
<b>Suspension, Rear</b> .....	Salisbury Axle; Hypoid Drive; Two-stage Multi-leaf Springs	
Axle Capacity .....	3820 lb.	6000 lb.
Axle Ratio .....	2.73	3.42
Springs, Main @ Ground .....	2000 lb. ea.	3000 lb. ea.
Shock Absorbers .....	25mm dia.	32mm dia.
<b>Brakes</b> .....	Hydraulic; Self-adjusting	
Front .....	Disc; 11.86" Rotor	Disc; 12.5" Rotor
Rear .....	Drum; 11.15" x 2.75"	Drum; 13.0" x 2.5"
Booster .....	Dual Diaphragm	
Parking .....	Cable to Rear Wheels	
<b>Electrical</b> .....	12 Volt; Negative Ground	
Battery—Freedom Type .....	405 CCA♦ @ 0°F.	
—Reserve Capacity .....	75 min. @ 80°F.	
Delcotron Generator .....	37 amp.	
<b>Frame</b> .....	Carbon Steel; 36-39,000 psi	
Section Modulus .....	3.10	3.88
<b>Fuel Tank (nominal capacity)</b> .....	25 gal.	
<b>Steering Gear Type</b> .....	Manual; Recirculating Ball Gear	
Linkage .....	Parallelogram	
<b>Transmission</b> .....	4-Speed Automatic w/Overdrive	4-Speed Manual
Shift Location .....	Steering Column	Floor
<b>Tires</b> .....	(5) P235/75R15	Fr. (2) LT235/85R16D (8PR) Rr. (2) LT235/85R16E (10PR)
<b>Wheels</b> .....	(5) Disc 15" x 6"	(4) Disc 16" x 6.5"

■Standard engine not available for registration in the State of California; see Power Teams chart.

\*Dual tail pipe on C10/1500 model.

♦CCA-Cold Cranking Amps

# C/K SUBURBAN—4-Wheel Drive

## STANDARD SPECIFICATIONS

(See Gray Tab Section for Specification Details)

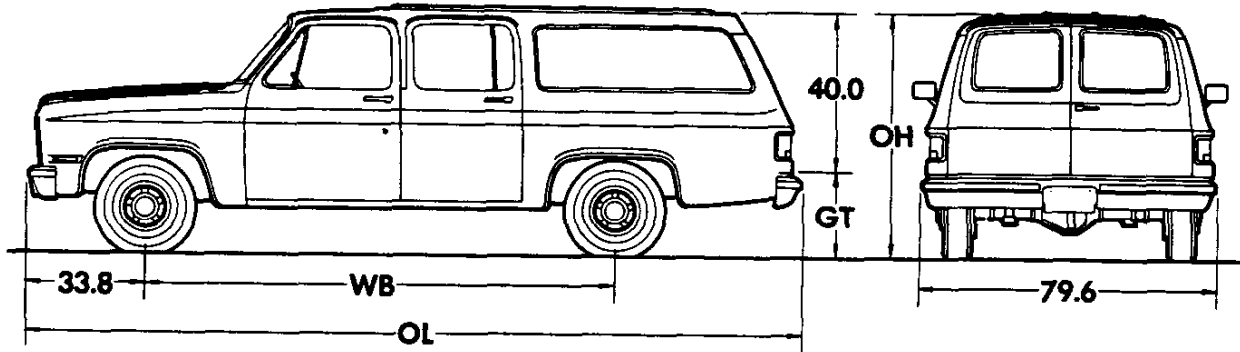
Series	K10/1500	K20/2500
<b>Engine</b>	5.7 Liter, 350 4-bbl. V8	
<b>Base Equip.</b>	12"; 150 sq. in.	
<b>Clutch</b>	Oiled-paper Element	
<b>Air Filter</b>	Throwaway Type	
<b>Oil Filter</b>	*Single; Aluminized	
<b>Exhaust System</b>	See Engine & Cooling Section for specific model applications	
<b>Emission Control Systems</b>		
<b>Suspension, Front</b>	Salisbury Axle, Hypoid Drive; Single-stage 2-leaf Springs	
<b>Capacity</b>	3600 lb.	3800 lb.
<b>Axle Ratio</b>	3.42	3.73
<b>Springs @ Ground</b>	1850 lb. ea.	1850 lb. ea.
<b>Shock Absorbers</b>	25mm dia.	32mm dia.
<b>Stabilizer Bar</b>	1.25" dia.	1.25" dia.
<b>Hubs - Automatic Locking</b>	Standard	Standard
<b>Suspension, Rear</b>	Salisbury Axle, Hypoid Drive; Two-stage Multi-leaf Springs	
<b>Axle Capacity</b>	4000 lb.	6000 lb.
<b>Axle Ratio</b>	3.42	3.73
<b>Springs @ Ground</b>	2000 lb. ea.	3000 lb. ea.
<b>Shock Absorbers</b>	25mm dia.	32mm dia.
<b>Brakes</b>	Hydraulic; Self-adjusting	
<b>Front</b>	Disc; 11.86" Rotor	Disc; 12.5" Rotor
<b>Rear</b>	Drum; 11.15" x 2.75"	Drum; 13" x 2.5"
<b>Booster</b>	Dual Diaphragm	
<b>Parking</b>	Cable to Rear Wheels	
<b>Electrical</b>	12 Volt; Negative Ground	
<b>Battery - Freedom Type</b>	405 CCA ♦ @ 0°F.	
<b>- Reserve Capacity</b>	75 min. @ 80°F.	
<b>Delcotron Generator</b>	37 amp.	
<b>Frame</b>	Carbon Steel; 36,-39,000 psi	
<b>Section Modulus</b>	3.57	3.88
<b>Fuel Tank (nominal capacity)</b>	25 gal.	
<b>Steering Gear Type</b>	Integral Power	
<b>Transmission</b>	4-Speed Manual	
<b>Shift Location</b>	Floor	
<b>Transfer Case</b>	New Process 208 2-Speed	
<b>Shift Lever</b>	Single Lever	
<b>Tires</b>	(5) P215/75R15	Fr. (2) LT235/85R16D(8PR) Rr. (2) LT235/85R16E(10PR)
<b>Wheels</b>	(5) Disc 15" x 6"	(4) Disc 16" x 6.5"

\*Dual tail pipe on K10/1500 model.

♦CCA-Cold Cranking Amps.

# C/K SUBURBAN

Body Ordering Codes:  
 Panel Rear Doors—ZW9  
 Endgate—E55†



Capacity—143.5 cu ft  
 Load Floor Area—40 sq ft

Series	Ground Clearance (in)*	
	Front	Rear
C1	7.5	7.2
C2	8	7.8
K1	8.7	7.2
K2	8.8	7.8

Model	Engine No. Cyl.	Dimensions (in)*				†Curb Weight (lb)			†Model Weight (lb)*		
		WB	OL	OH	GT	Front	Rear	Total	Front	Rear	Total

### C10/1500 SERIES

<b>C10906</b>	8	129.5	219.1	72.0	28.8	2036	2284	4320	2379	2391	4770
---------------	---	-------	-------	------	------	------	------	------	------	------	------

### C20/2500 SERIES

<b>C20906</b>	8	129.5	219.1	72.7	29.5	2294	2412	4706	2537	2619	5156
---------------	---	-------	-------	------	------	------	------	------	------	------	------

### K10/1500 SERIES

<b>K10906</b>	8	129.5	219.1	73.8	30.5	2498	2221	4719	2741	2428	5169
---------------	---	-------	-------	------	------	------	------	------	------	------	------

### K20/2500 SERIES

<b>K20906</b>	8	129.5	219.1	76.1	33.6	2536	2455	4991	2779	2662	5441
---------------	---	-------	-------	------	------	------	------	------	------	------	------

\*Dimensions with standard equipment, unloaded.

\*Model Weight includes Curb Weight plus occupants (standard seating capacity x 150 lb). Total Model Weight may vary as much as ±150 lbs. to allow for production build variation.

†Curb Weights and Model Weights shown are for models with ZW9 Panel Rear Doors. For models with E55 Endgate, weights must be adjusted as follows: Front -22 lb.; Rear +60 lb.; Total added weight 38 lb.

# C/K SUBURBAN

## POWER TEAMS

### ALL STATES EXCEPT CALIFORNIA

**POWER TEAMS (MUST ORDER ENGINE, TRANSMISSION AND REAR AXLE)**  
 (Consult GVWR Selector and Tire Chart to insure tire capacity and availability)

ENGINE	TRANSMISSION		AXLES				GVW	
	4-SP	AUTO	2.73	3.08	3.42	3.73		
<b>W/NA5 STANDARD EMISSION EQUIPMENT</b>								
<b>-C10906</b>								
LE9 V8 5.0 Liter (305-4BBL)		MXO		GQ1	GU4	—	—	8100
		MXO		—	GQ1	GU6	—	8800
LS9 V8 5.7 Liter (350-4BBL)		MXO		GQ1	GU4	—	#GT4	6100
		MXO		—	GQ1	GU6	#GT4	8800
LH6 Diesel 6.2 Liter V8 (379 Cu.In.)(Reqs B3J)		MXO		—	GQ1	GU6	#GT4	7000
<b>-K10906</b>								
LS9 V8 5.7 Liter (350-4BBL)	MM4			—	—	GQ1	GT4	8100
		MXO		—	GQ1	GU6	#GT4	6100
	MM4			—	—	GQ1	GT4	7000
		MXO		—	GQ1	GU6	#GT4	7000
LH6 Diesel 6.2 Liter V8 (379 Cu.In.)(Reqs B3J)		MXO		—	—	GQ1	GT4	7000
		MXO		—	—	GQ1	GT4	7300
<b>W/NA6 HIGH ALTITUDE EMISSION EQUIPMENT</b>								
<b>-C10906</b>								
LE9 V8 5.7 Liter (305-4BBL)		MXO		—	GQ1	GU6	—	6100
		MXO		—	GQ1	GU6	—	8800
LS9 V8 5.0 Liter (350-4BBL)		MXO		—	—	GQ1	GT4	6100
		MXO		—	—	GQ1	GT4	7000
LH6 Diesel 6.2 Liter V8 (379 Cu.In.)(Reqs B3J)		MXO		—	—	GQ1	GT4	7000
<b>-K10906</b>								
LS9 V8 5.7 Liter (350-4 BBL)	MM4	MXO		—	—	GQ1	GT4	6100
	MM4	MXO		—	—	GQ1	GT4	8800
LH6 Diesel 6.2 Liter V8 (379 Cu.In.)(Reqs B3J)		MXO		—	—	GQ1	GT4	7000
		MXO		—	—	GQ1	GT4	7300

#Reqs Z82 Trailering Special

### CALIFORNIA ONLY

**POWER TEAMS (MUST ORDER ENGINE, TRANSMISSION AND REAR AXLE)**  
 (Consult GVWR Selector and Tire Chart to insure tire capacity and availability)

ENGINE	TRANSMISSION		AXLES				GVW	
	4-SP	AUTO	2.73	3.08	3.42	3.73		
<b>W/YF5 CALIFORNIA EMISSION REQUIREMENTS</b>								
<b>-C10906</b>								
LS9 V8 5.7 Liter (350-4 BBL)		MXO		—	GQ1	GU6	—	6100
		MXO		—	GQ1	GU6	—	8800
LH6 Diesel 6.2 Liter V8 (379 Cu.In.)(Reqs B3J)		MXO		—	GQ1	GU6	—	7000
<b>-K10906</b>								
LS9 V8 5.7 Liter (350-4BBL)		MXO		—	GQ1	GU6	—	6100
		MXO		—	GQ1	GU6	—	7000
LH6 Diesel 6.2 Liter V8 (379 Cu. In.)(Reqs B3J)		MXO		—	—	GQ1	GT4	7000
		MXO		—	—	GQ1	GT4	7300

#Reqs Z82 Trailering Special

# C/K SUBURBAN

## POWER TEAMS

### ALL STATES

## POWER TEAMS (MUST ORDER ENGINE, TRANSMISSION AND REAR AXLE)

(Consult GVWR Selector and Tire Chart to insure tire capacity and availability)

**W/NA5 STANDARD (Satisfies High Altitude Emission Requirements), NA6 HIGH ALTITUDE OR YF5 CALIFORNIA EMISSIONS**

ENGINE	TRANSMISSION			AXLES					GVW
	4-SP	AUTO		*3.21	3.42	3.73	4.10	4.56	
<b>-C20906</b>									
#LT9 V8 5.7 Liter (350-4BBL)	MM4			—	GQ1	GT4	—	—	8600
		MX0/1		—	—	—	GQ1	HC4	8600
#LE8 V8 7.4 Liter (454-4BBL) (Reqs N41 and UA1)		MX1		*GQ1	—	GT4	GT5	—	8600
				—	—	—	—	—	—
LL4 Diesel 6.2 Liter V8 (379 Cu. In.)(Reqs B3J)		MX0/1		—	—	—	GQ1	HC4	8600
<b>-K20906</b>									
#LT9 V8 5.7 Liter (350-4BBL)	MM4			—	—	GQ1	GT5	—	8600
		MX0/1		—	—	—	GQ1	—	8600
LL4 Diesel 6.2 Liter V8 (379 Cu. In.)(Reqs B3J)		MX0/1		—	—	—	GQ1	—	8600

\*N/A G80 Locking Differential

#N/A NA6 High Altitude Emissions. With NA5 Emissions Satisfies High Altitude Requirements

■ High Altitude Emission Equipment (FOR EXHAUST SMOKE REDUCTION PURPOSES AT HIGH ALTITUDE; NOT REQUIRED TO SATISFY HIGH ALTITUDE EMISSION REGULATIONS)(REQS LL4 ENG)

## ENGINE RATINGS

### ALL STATES EXCEPT CALIFORNIA

SAE Net Ratings	*5.0 Liter 305 4-bbl V8	*5.7 Liter 350 4-bbl V8	**5.7 Liter 350 4-bbl V8	**7.4 Liter 454 4-bbl V8
Net Horsepower.....	160 @ 4400 rpm	165 @ 3800 rpm	160 @ 3800 rpm	230 @ 3800 rpm
Net Torque, lb-ft.....	235 @ 2000 rpm	275 @ 1600 rpm	250 @ 2800 rpm	360 @ 2800 rpm

SAE Net Ratings	*6.2 Liter 379 V8 Diesel	**6.2 Liter 379 V8 Diesel
Net Horsepower.....	130 @ 3600 rpm	135 @ 3600 rpm
Net Torque, lb-ft.....	240 @ 2000 rpm	240 @ 2000 rpm

\*Engine with Light or Medium Duty Emissions (w/GVWR up to 8500 lb.)

\*\*Engine with Heavy Duty Emissions (w/GVWR over 8500 lb.)

## CALIFORNIA ONLY

SAE Net Ratings	*5.7 Liter 350 4-bbl V8	**5.7 Liter 350 4-bbl V8	**7.4 Liter 454 4-bbl V8
Net Horsepower.....	165 @ 3800 rpm	155 @ 4000 rpm	230 @ 3800 rpm
Net Torque, lb-ft.....	275 @ 1600 rpm	240 @ 2800 rpm	360 @ 2800 rpm

SAE Net Ratings	*6.2 Liter 379 V8 Diesel	**6.2 Liter 379 V8 Diesel
Net Horsepower.....	130 @ 3600 rpm	135 @ 3600 rpm
Net Torque, lb-ft.....	240 @ 2000 rpm	240 @ 2000 rpm

\*Engine with Light or Medium Duty Emissions (w/GVWR up to 8500 lb.)

\*\*Engine with Heavy Duty Emissions (w/GVWR over 8500 lb.)

## C/K SUBURBAN

### GVWR SELECTOR—ALL STATES

GVW Rating (lbs)	†GAWR (lbs)		Minimum Equipment Required for GVW Rating		
	Front	Rear	Tire Capacity (lbs ea)		Chassis Equipment
			Front	Rear	

#### C10/1500 SERIES

▲ 6100	3250	3686	1843	1843	Standard
▲ 6800	3250	3820	1984	1984	Stabilizer Bar (F59)
7000	3400	3820	1984	1984	Diesel Equipment Package (B3J)

#### K10/1500 SERIES

▲ 6100	3166	3166	1583	1583	Standard
● 7000	3600	3686	1843	1843	
7300	3600	3968	1984	1984	Diesel Equipment Package (B3J); Center and Rear Seats (AS3)

†GAWR's shown are the maximum for each axle with equipment listed. Other GAWR's are available, and they are determined as the minimum capacity of either axle, springs or tires.

▲ Not available with Diesel Equipment Package (B3J).

● With Diesel Equipment Package, not available with Center and Rear Seats (AS3).

■ Center seat (AT5) available on all GVWRs; Center and Rear seats (AS3) available on 6800 or above GVWRs.

### FRONT AND REAR TIRE AVAILABILITY CHART—ALL STATES

#### C-K10/1500 SERIES

**Spare tire to match either front or rear tires must be ordered.  
K10/1500 models require matching front and rear tread**

Description	Capacity (lbs ea)	Highway		On-Off Road		Spare
		Front	Rear	*Front	Rear	
<b>TUBELESS</b>						
#P215/75R15 Steel Belted Radial	1583	XKT	YKT	—	—	ZKT
#P215/75R15 Whitewall Steel Belted Radial	1583	XKU	YKU	—	—	ZKU
P235/75R15 Steel Belted Radial	1843	XBD	YBD	—	—	ZBD ZES
P235/75R15 Whitewall Steel Belted Radial	1843	XBJ	YBJ	—	—	ZBJ
P235/75R15 XL Steel Belted Radial	1984	XPR	YPR	—	—	ZPR
P235/75R15 Whitewall XL Steel Belted Radial	1984	XPW	YPW	—	—	ZPW

\*On-Off road front tires available on K1 models only.

#K1 models only. Not available with Diesel Equipment Package (B3J).



## C/K SUBURBAN

### GVWR SELECTOR—ALL STATES

GVW Rating (lbs)	+GAWR (lbs)		Minimum Equipment Required for GVW Rating		
	Front	Rear	Tire Capacity (lbs ea)		Chassis Equipment
			Front	Rear	

#### C20/2500 SERIES

<b>8600</b>	3800	6000	2623	3042	Standard
-------------	------	------	------	------	----------

#### K20/2500 SERIES

<b>8600</b>	3700	6000	2623	3042	Standard
-------------	------	------	------	------	----------

+GAWR's shown are the maximum for each axle with equipment listed. Other GAWR's are available, and they are determined as the minimum capacity of either axle, springs or tires.

### FRONT AND REAR TIRE AVAILABILITY CHART—ALL STATES

#### C-K20/2500 SERIES

**Spare tire to match either front or rear tires is available at extra cost.  
K20/2500 models require matching front and rear tread**

Description	Capacity (lbs ea)	Highway		On-Off Road		Spare
		Front	Rear	*Front	Rear	
<b>TUBELESS</b>						
<b>LT235/85R16D</b> Steel Belted Radial	2623	XYM	—	—	—	—
<b>LT235/85R16E</b> Steel Belted Radial	3042	—	YYN	—	— #YYT #YYT	ZYN #ZYT #ZYN
<b>LT235/85R16E</b> Steel Belted Radial	3042	XYN	YYN	— *XYT —	— YYT #YYT	ZYN ZYT #ZYN

\*On-Off road front tires available on K2 models only.  
#Available on C2 models only.

2

# NOTES

# C/K SUBURBAN

## 6.2 LITER DIESEL ENGINE

### **Equipment Included With 6.2L Diesel Engine:**

- Low Coolant Sensor
- Poly-wrapped Paper Element Air Cleaner
- Auxiliary Engine Oil Cooler provided with 4.56 ratio rear axle (in addition to cooler in radiator tank)
- Engine Block Heater
- Fuel Tank with water detection and drain system
- Fuel Line Heater

## B3J DIESEL EQUIPMENT PACKAGE

**(Requires 6.2 Liter Diesel Engine)**

### **Equipment Included With B3J Diesel Equipment Package:**

- Hydraulic Power-assisted Brakes
- K81 66-amp Generator
- Engine Oil Cooler (located in radiator tank)
- Dual 550 Cold Cranking Amp/115 min. Reserve Capacity Batteries
- HD Radiator
- Dual Exhaust System
- Additional Insulation:
  - Cab-to-fender insulators
  - Fiberglass hood insulator
  - Fiberglass engine compartment firewall insulator
  - Cowl side spray-on deadener
- Driver compartment dash mat with increased mastic layer
- Resinated cotton and mastic floor insulation
- Full cowl interior trim panels with resinated cotton insulation
- Full-length, foam-backed cloth headliner
- Warning Lights: Glow Plugs, Water-in-fuel, and Low Coolant
- Diesel Engine Identification:
  - Hood ornament
  - Fender nameplates
  - Rear door or tailgate nameplate
  - Diesel fuel label at fuel filler door(s)

### **Additional Included Equipment:**

#### **C10/1500 Models**

- F59 Front Stabilizer Bar
- Power Steering
- HD (1700 lb. ea.) Front Springs
- 7000-lb. GVWR

#### **C20/2500 Models**

- Power Steering

## ADDITIONAL REQUIRED EQUIPMENT

### **C10/1500 Models**

- P235/75R15 tires

### **K10/1500 Models**

- 7000-lb. minimum GVWR
- MX0 4-speed Automatic Transmission (with Overdrive)
- P235/75R15 or larger tires

### **C-K20/2500 Models**

- MX1 or MX0 Automatic Transmission

## C-K SUBURBAN 1983 VEHICLES WITH STANDARD EQUIPMENT

Prices shown are effective with initial shipment of 1983 model motor vehicles

Description	Model Number	Body Code	Wheel Base	Factory D&H(a)	List Price	Mfr's Suggested Retail Price★	Group Number
◆ <b>8-Cylinder 5.0 Liter (305 Cu. In.) 4 BBL Engine-Engine Ordering Code LE9</b>							
<b>C10/C1500 Series 2-Wheel Drive</b>							
Panel Doors	CC/TC10906	ZW9	129.5"	15.05	9901.00	9916.05	13
Tailgate	CC/TC10906	E55	129.5"	15.05	9936.00	9951.05	13
◆ <b>8-Cylinder 5.7 Liter (350 Cu. In.) 4 BBL Engine-Engine Ordering Code LS9</b>							
<b>K10/K1500 Series 4-Wheel Drive</b>							
Panel Doors	CK/TK10906	ZW9	129.5"	12.95	10833.00	10845.95	14
Tailgate	CK/TK10906	E55	129.5"	12.95	10868.00	10880.95	14
◆ <b>8-Cylinder 5.7 Liter (350 Cu. In.) 4 BBL Engine-Engine Ordering Code LT9</b>							
<b>C20/C2500 Series 2-Wheel Drive</b>							
Panel Doors	CC/TC20906	ZW9	129.5"	18.34	10134.00	10152.34	13
Tailgate	CC/TC20906	E55	129.5"	18.34	10169.00	10187.34	13
<b>K20/K2500 Series 4-Wheel Drive</b>							
Panel Doors	CK/TK20906	ZW9	129.5"	18.34	11772.00	11790.34	14
Tailgate	CK/TK20906	E55	129.5"	18.34	11807.00	11825.34	14

- ★ Manufacturer's Suggested Retail Prices do not include applicable destination charges, state and local taxes, license fees, optional equipment or accessories or special items or services.
- ◆ Refer to Power Team Chart for California Emission Certification Requirements.

## OPTIONS AND ACCESSORIES WHEN INSTALLED BY GENERAL MOTORS

Prices shown are effective with initial shipment of 1983 model motor vehicles

Description	Option Number	Factory D&H(a)	List Price	Mfr's Suggested Retail Price◇
<b>Scottsdale/High Sierra:</b> (See Interior and Exterior Color Selection Chart) Not available when YE9 is specified. Includes bright windshield and rear side window moldings, B84 Black Body Side Moldings, turn signal and side marker lamp bezels, bright taillight trim, dual horns, nameplates on front fender and instrument panel, U37 Cigarette Lighter, dome lamp with bright bezels, bright sill plates and special insulation. Also includes spare tire cover when spare tire is specified.				
Without B3J Diesel Equipment Package. Also includes BB5 Headliner	Z82	N.A.	424.00	424.00
With B3J Diesel Equipment Package	Z82	N.A.	281.00	281.00
<b>Silverado/Sierra Classic:</b> Available only when custom vinyl or cloth seats are specified. Includes wheel opening moldings, custom steering wheel, YG3 Deluxe Molding Package, bright taillight trim and rear door or tailgate moldings, bright front turn signal and front side marker lamp bezels, fender nameplates, bright windshield and rear side window moldings, carpeting, bright sill plates, plastic door trim panels with storage pockets and bright brushed-finish accents, dual horns, visor mirror, B85 Bright Body Side Moldings, V22 Deluxe Front Appearance, nameplate on instrument panel, U37 Cigarette Lighter, dome lamp with bright bezels, special insulation, pillar trim panels, Z53 Voltmeter, Temperature, and Oil Pressure Gages. Also includes spare tire cover when spare tire is specified.				
Without B3J Diesel Equipment Package. Also includes BB5 Headliner	YE9	N.A.	1199.00	1199.00
With B3J Diesel Equipment Package	YE9	N.A.	1056.00	1056.00
<b>Seat Trim: Driver and Passenger.</b> (See Interior and Exterior Color Selection Chart)				
Vinyl Bench Seat. Not available when YE9 is specified				
Custom Cloth Bench Seat. Available only when Z62 or YE9 is specified.				
With Z62		N.A.	50.00	50.00
Without AT5 or AS3 Seats		N.A.	120.00	120.00
With AT5 Center Seat without AS3 Center and Rear Seats. Includes full floor mats		N.A.	170.00	170.00
With AS3 Center and Rear Seats. Includes full floor mats		N.A.	170.00	170.00
With YE9				
Without AT5 or AS3 Seats				
With AT5 Center Seat without AS3 Center and Rear Seats. Includes full carpeting		N.A.	141.00	141.00
With AS3 Center and Rear Seats. Includes full carpeting		N.A.	191.00	191.00

- (a) D & H Charges on vehicle and optional equipment include reimbursement to ordering Division for any tax that it has paid, incurred or agreed to pay thereon.
- ◇ State and local taxes not included.

## C-K SUBURBAN

### OPTIONS AND ACCESSORIES WHEN INSTALLED BY GENERAL MOTORS

Prices shown are effective with initial shipment of 1983 model motor vehicles

Description	Option Number	Factory D&H(a)	List Price	Mfr's Suggested Retail Price ◊
<b>Seat Trim: (Continued)</b>				
<i>Custom Vinyl Bench Seat. Available only when Z62 or YE9 is specified.</i>				
<i>With Z62</i>				
Without AT5 or AS3 Seats		N.A.	50.00	50.00
With AT5 Center Seat without AS3 Center and Rear Seats. Includes full floor mats		N.A.	120.00	120.00
With AS3 Center and Rear Seats. Includes full floor mats		N.A.	170.00	170.00
<i>With YE9</i>				
Without AT5 or AS3 Seats			NO ADDITIONAL CHARGE	
With AT5 Center Seat without AS3 Center and Rear Seats. Includes full carpeting		N.A.	141.00	141.00
With AS3 Center and Rear Seats. Includes full carpeting		N.A.	191.00	191.00
<i>Custom Cloth High Back Bucket Seats. Includes console</i>				
Without AT5 or AS3 Seats		N.A.	229.00	229.00
With AT5 Center Seat without AS3 Center and Rear Seats. Includes full carpeting		N.A.	370.00	370.00
With AS3 Center and Rear Seats. Includes full carpeting		N.A.	420.00	420.00
<i>Custom Vinyl High Back Bucket Seats. Includes console</i>				
Without AT5 or AS3 Seats		N.A.	229.00	229.00
With AT5 Center Seat without AS3 Center and Rear Seats. Includes full carpeting		N.A.	370.00	370.00
With AS3 Center and Rear Seats. Includes full carpeting		N.A.	420.00	420.00
<b>Paints, Exterior:</b> (See Interior and Exterior Color Selection Chart for ordering information).				
<i>Solid</i>				
	ZY1		NO ADDITIONAL CHARGE	
<i>Special Two-Tone</i>				
Without Z62 or YE9. Includes YG1 Custom Molding Package and wheel opening moldings	ZY3	N.A.	307.00	307.00
With Z62. Includes YG1 Custom Molding Package and wheel opening moldings	ZY3	N.A.	183.00	183.00
With YE9	ZY3	N.A.	155.00	155.00
<i>Exterior Decor Package. Includes dual-tone side and rear decal striping.</i>				
Without Z62 or YE9. Also includes YG1 Custom Package, wheel opening moldings, hood ornament and hood accent stripes. Without B3J Diesel Equipment Package also includes hood ornament	ZY5	N.A.	457.00	457.00
With Z62. Also includes YG1 Custom Package, wheel opening moldings, hood ornament and hood accent stripes	ZY5	N.A.	333.00	333.00
With YE9	ZY5	N.A.	305.00	305.00
<b>Emission Systems:</b> Dealer Note - One of the following emission options must be specified. (See Power Teams Chart for availability and complete specifications)				
<i>California Emission Requirements:</i> Not available when V10 Cold-Climate Package, LE9 5.0 Liter Engine, NA5 Standard Emissions or NA6 High Altitude Emissions are specified. Includes all testing, equipment and/or certification necessary for registration in the State of California				
With LS9 5.7 Liter Engine	YF5	N.A.	212.00	212.00
With LT9 5.7 Liter or LE8 7.4 Liter Engine	YF5	N.A.	150.00	150.00
With LH6 or LL4 6.2 Liter Diesel Engine	YF5	N.A.	215.00	215.00
<i>High Altitude Emission Equipment. Not available when NA5 Standard Emission Equipment or YF5 California Emissions are specified.</i>				
	NA6		NO ADDITIONAL CHARGE	
<i>Standard Emission Equipment. Not available when YF5 California Emissions or NA6 High Altitude Emissions are specified.</i>				
	NA5		NO ADDITIONAL CHARGE	
<b>Engines:</b> (See Power Teams Chart for availability and complete specifications)				
5.0 Liter (305 Cu. In.) 4 BBL V8. C1 Series only	LE9		NO ADDITIONAL CHARGE	
5.7 Liter (350 Cu. In.) 4 BBL V8. Standard on K1 Series. C1 Series only	LS9		NO ADDITIONAL CHARGE	
5.7 Liter (350 Cu. In.) 4 BBL V8. C-K2 Series only	LT9		NO ADDITIONAL CHARGE	
7.4 Liter (454 Cu. In.) 4 BBL V8. C2 Series only. Available only when N41 Power Steering and UA1 H.D. Battery are specified	LE8	N.A.	113.00	113.00
6.2 Liter (379 Cu. In.) L.D. V8 Diesel. C-K1 Series only. Available only when B3J Diesel Equipment Package is specified	LH6	N.A.	1164.00	1164.00
6.2 Liter (379 Cu. In.) H.D. V8 Diesel. C-K2 Series only. Available only when B3J Diesel Equipment Package is specified	LL4	N.A.	1334.00	1334.00
<b>Transmissions:</b>				
4-Speed Manual. C2 or K1-2 Series only	MM4		NO ADDITIONAL CHARGE	
4-Speed Automatic Overdrive. Standard on C1 Series. Not available when LE8 7.4 Liter Engine is specified	MX0	N.A.	650.00	650.00
3-Speed Automatic. C-K2 Series only	MX1	N.A.	492.00	492.00

(a) D & H Charges on vehicle and optional equipment include reimbursement to ordering Division for any tax that it has paid, incurred or agreed to pay thereon.

◊ State and local taxes not included.

# C-K SUBURBAN

## OPTIONS AND ACCESSORIES WHEN INSTALLED BY GENERAL MOTORS

Prices shown are effective with initial shipment of 1983 model motor vehicles

Description	Option Number	Factory D&H(a)	List Price	Mfr's Suggested Retail Price ◊
<b>Axles, Rear:</b> (See Power Teams Chart for option number selection, availability and complete specifications)				
Optional Ratio .....	...	N.A.	36.00	36.00
Locking Differential .....	G80	N.A.	230.00	230.00
<b>Tires:</b> (See Tire Charts for Tire Availability)				
All rim sizes are 6.00" on C-K1 Series except when N67 or PA6 wheels are specified.				
All rim sizes are 6.50" on C-K2 Series				
<b>TUBELESS</b>				
<b>P215/75R15 Highway Steel Belted Radial Ply Blackwall</b> (Maximum Capacity 1583-lbs) Not available when LH6 6.2 Liter Diesel Engine is specified.				
K1 Series only.				
Front (Standard) .....	XKT		NO ADDITIONAL CHARGE	
Rear (Standard) .....	YKT		NO ADDITIONAL CHARGE	
Spare (Standard) .....	ZKT		NO ADDITIONAL CHARGE	
<b>P215/75R15 Highway Steel Belted Radial Ply Whitewall</b> (Maximum Capacity 1583-lbs) Not available when LH6 6.2 Liter Diesel Engine is specified.				
K1 Series only.				
Front .....	XKU	N.C.	28.00	28.00
Rear .....	YKU	N.C.	28.00	28.00
Spare .....	ZKU	N.C.	14.00	14.00
<b>P235/75R15 Highway Steel Belted Radial Ply Blackwall</b> (Maximum Capacity 1843-lbs)				
Front				
C1 Series only (Standard). Not available when LH6 6.2 Liter Diesel Engine is specified.				
	XBD		NO ADDITIONAL CHARGE	
K1 Series only .....	XBD	.84	50.00	50.84
Rear				
C1 Series only (Standard). Not available when LH6 6.2 Liter Diesel Engine is specified.				
	YBD		NO ADDITIONAL CHARGE	
K1 Series only .....	YBD	.84	50.00	50.84
Spare				
C1 Series only (Standard). Not available when LH6 6.2 Liter Diesel Engine is specified.				
	ZBD		NO ADDITIONAL CHARGE	
K1 Series only .....	ZBD	.42	25.00	25.42
<b>P235/75R15 On-Off Road Steel Belted Radial Ply Blackwall</b> (Maximum Capacity 1843-lbs)				
Front. K1 Series only .....				
	XES	1.20	70.00	71.20
Rear				
C1 Series only. Not available when LH6 6.2 Liter Diesel Engine is specified				
	YES	.36	20.00	20.36
K1 Series only .....	YES	1.20	70.00	71.20
Spare				
C1 Series only .....				
	ZES	.18	10.00	10.18
K1 Series only .....	ZES	.60	35.00	35.60
<b>P235/75R15 Highway Steel Belted Radial Ply Whitewall</b> (Maximum Capacity 1843-lbs)				
Front				
C1 Series only. Not available when LH6 6.2 Liter Diesel Engine is specified				
	XBJ	N.C.	34.00	34.00
K1 Series only .....	XBJ	.84	84.00	84.84
Rear				
C1 Series only. Not available when LH6 6.2 Liter Diesel Engine is specified				
	YBJ	N.C.	34.00	34.00
K1 Series only .....	YBJ	.84	84.00	84.84
Spare				
C1 Series only. Not available when LH6 6.2 Liter Diesel Engine is specified				
	ZBJ	N.C.	17.00	17.00
K1 Series only .....	ZBJ	.42	42.00	42.42
<b>P235/75R15 XL Highway Steel Belted Radial Ply Blackwall</b> (Maximum Capacity 1984-lbs)				
Front				
C1 Series only .....				
	XPR	(-.10)	18.00	17.90
K1 Series only .....	XPR	.74	68.00	68.74
Rear				
C1 Series only .....				
	YPR	(-.10)	18.00	17.90
K1 Series only .....	YPR	.74	68.00	68.74
Spare				
C1 Series only .....				
	ZPR	(-.05)	9.00	8.95
K1 Series only .....	ZPR	.37	34.00	34.37

(a) D & H Charges on vehicle and optional equipment include reimbursement to ordering Division for any tax that it has paid, incurred or agreed to pay thereon.  
 ◊ State and local taxes not included.

## C-K SUBURBAN

### OPTIONS AND ACCESSORIES WHEN INSTALLED BY GENERAL MOTORS

Prices shown are effective with initial shipment of 1983 model motor vehicles

Description	Option Number	Factory D&H(a)	List Price	Mfr's Suggested Retail Price ◊
<b>Tires: (Continued)</b>				
<i>P235/75R15 XL Highway Steel Belted Radial Ply Whitewall</i> (Maximum Capacity 1984-lbs)				
Front				
C1 Series only.....	XPW	(-.10)	54.00	53.90
K1 Series only.....	XPW	.74	104.00	104.74
Rear				
C1 Series only.....	YPW	(-.10)	54.00	53.90
K1 Series only.....	YPW	.74	104.00	104.74
Spare				
C1 Series only.....	ZPW	(-.05)	27.00	26.95
K1 Series only.....	ZPW	.37	52.00	52.37
<i>LT235/85R16D Highway Steel Belted Radial Ply Blackwall</i> (Maximum Capacity 2623-lbs) C-K2 Series only.				
Front. (Standard).....	XYM		NO ADDITIONAL CHARGE	
<i>LT235/85R16E Highway Steel Belted Radial Ply Blackwall</i> (Maximum Capacity 3042-lbs). C-K2 Series only.				
Front.....	XYN	.18	32.00	32.18
Rear. (Standard).....	YYN		NO ADDITIONAL CHARGE	
Spare.....	ZYN	4.63	341.00	345.63
<i>LT235/85R16E On-Off Road Steel Belted Radial Ply Blackwall</i> (Maximum Capacity 3042-lbs.)				
Front. K2 Series only.....	XYT	.48	86.00	86.48
Rear. C-K2 Series only.....	YYT	.30	54.00	54.30
Spare. C-K2 Series only.....	ZYT	4.78	368.00	372.78

### OTHER OPTIONS

<b>Air Cleaner, Pre-Cleaner</b> .....	K46	N.A.	41.00	41.00
<b>Air Conditioning:</b> <i>All-Weather.</i> Not available when V10 Cold-Climate Package is specified. Includes extra cooling.				
<i>Front.</i> Included when C69 Front and Rear Air Conditioning is specified. Recommended for front seat area cooling only.				
Without B3J Diesel Equipment Package C49 Rear Window Defogger or C36 Rear Heater. Also includes K81 66-Amp Generator				
Without Z62 or YE9.....	C60	N.A.	868.00	868.00
With Z62 or YE9.....	C60	N.A.	725.00	725.00
With B3J Diesel Equipment Package.....	C60	N.A.	665.00	665.00
<i>Front and Rear.</i> Rear Interior Roof Mounted. Available only when YE9 or Z62 is specified. Rear system operates on recirculating air.				
Without B3J Diesel Equipment Package, C49 Rear Window Defogger or C36 Rear Heater. Also includes K81 66-Amp Generator.....				
With B3J Diesel Equipment Package.....	C69	N.A.	1118.00	1118.00
With B3J Diesel Equipment Package.....	C69	N.A.	1058.00	1058.00
<b>Appearance, Deluxe Front:</b> Included when YE9 is specified. Includes dark argnet grille with bright trim and dual rectangular headlamps.....	V22	N.A.	106.00	106.00
<b>Batteries:</b> 12-Volt. 515 Cold Cranking Amps Delco Freedom. Not available when B3J Diesel Equipment Package is specified.				
<i>Auxiliary.</i> .....	TP2	N.A.	122.00	122.00
<i>Heavy-Duty.</i> Included when V10 Cold-Climate Package is specified.....	UA1	N.A.	48.00	48.00
<b>Bumper Equipment:</b>				
<i>Bumpers, Deluxe.</i> Front and Rear. Not available when V31 Bumper Guards are specified. Includes front and rear bumpers and black resilient impact strips..				
<i>Guards, Chromed. Front Bumper</i> .....	VE5	N.A.	47.00	47.00
<i>Guards, Chromed. Front Bumper</i> .....	V31	N.A.	40.00	40.00
<b>Clock: Quartz Electric</b>				
Without YE9. Includes Z53 Voltmeter, Temperature and Oil Pressure Gages ..	U35	N.A.	76.00	76.00
With YE9.....	U35	N.A.	38.00	38.00
<b>Cold-Climate Package:</b> Not available when B3J Diesel Equipment Package, C60 Front or C69 Front and Rear Air Conditioning is specified. Includes super heater and defroster, K05 Engine Block Heater, anti-freeze protection to -32 degrees, and UA1 H.D. Battery.				
Without Z82 Trailering Special, C36 Rear Heater or C49 Defogger. Also includes K81 66-Amp Generator .....	V10	N.A.	178.00	178.00
With Z82 Trailering Special, C36 Rear Heater or C49 Defogger.....	V10	N.A.	118.00	118.00

(a) D & H Charges on vehicle and optional equipment include reimbursement to ordering Division for any tax that it has paid, incurred or agreed to pay thereon.

◊ State and local taxes not included.

## C-K SUBURBAN

### OPTIONS AND ACCESSORIES WHEN INSTALLED BY GENERAL MOTORS

Prices shown are effective with initial shipment of 1983 model motor vehicles

Description	Option Number	Factory D&H(a)	List Price	Mfr's Suggested Retail Price ◊
<b>OTHER OPTIONS</b>				
<b>Coolers:</b> Included when Z82 Trailing Special is specified. <i>Recommended for heavy-duty trailering.</i>				
<b>Engine Oil.</b> Not available when B3J Diesel Equipment Package is specified . . .	KC4	N.A.	116.00	116.00
<b>Transmission Oil. Heavy-Duty.</b> Available only when MX0 or MX1 Automatic Transmission is specified. C-K1 Series also available only when V01 H.D. Radiator or C60 Front Air Conditioning or C69 Front and Rear Air Conditioning is specified without B3J Diesel Equipment Package. . . . .	VO2	N.A.	57.00	57.00
<b>Cooling: Radiator, Heavy-Duty.</b> Not available when B3J Diesel Equipment Package, C60 Front Air Conditioning or C69 Front and Rear Air Conditioning is specified. C-K2 Series also not available when MX0 or MX1 Automatic Transmission is specified. . . . .	V01	N.A.	51.00	51.00
<b>Defogger, Rear Window: Electric.</b> Available only when A33 Power Tailgate Window is specified. Not available when AJ1 Deep Tinted Glass is specified. Without C60 Front or C69 Front and Rear Air Conditioning, B3J Diesel Equipment Package, C36 Rear Heater or Z82 Trailing Special. Includes K81 66-Amp Generator. . . . .	C49	N.A.	135.00	135.00
With C60 Front or C69 Front and Rear Air Conditioning, B3J Diesel Equipment Package or Z82 Trailing Special without C36 Rear Heater . . . . .	C49	N.A.	75.00	75.00
With C36 Rear Heater . . . . .	C49	N.A.	135.00	135.00
<b>Diesel Equipment Package:</b> Available only when LH6 or LL4 6.2 Liter Diesel Engine is specified. Includes two H.D. batteries, special instrument cluster with glow plug, water-in-fuel indicator, engine oil cooler, special sound insulation package, BB5 Headliner, hood emblem and front fender and tailgate nameplates. Also includes K81 66-Amp Generator unless C49 Rear Window Defogger is specified with C36 Rear Heater. C1-2 Series includes N41 Power Steering. C1 Series. Available only when 1984-lb capacity tires are specified. Also includes 1700-lb capacity front springs, 3400-lb capacity front axle and F59 Stabilizer . . . . .	B3J	N.A.	1453.00	1453.00
C2 Series . . . . .	B3J	N.A.	1408.00	1408.00
K1-2 Series. K1 Series available only when 1843-lb or larger capacity tires are specified . . . . .	B3J	N.A.	1178.00	1178.00
<b>Door Lock System, Power: Side doors only.</b> Available only when BB5 Headliner, B3J Diesel Equipment Package, Z62, YE9, C60 Front or C69 Front and Rear Air Conditioning is specified. Included when ZQ2 Operating Convenience Package is specified. . . . .	AU3	N.A.	185.00	185.00
<b>Engine Block Heater:</b> Not available when B3J Diesel Equipment Package is specified. Included when V10 Cold-Climate Package is specified . . . . .	K05	N.A.	31.00	31.00
<b>Floor Covering: Mats, Color-Keyed, Front Floor.</b> Available only when YE9 is specified . . . . .	B32	N.A.	14.00	14.00
<b>Gages: Voltmeter, Temperature and Oil Pressure.</b> Included when YE9 or U35 Electric Clock is specified . . . . .	Z53	N.A.	38.00	38.00
<b>Generator: 66-Amp Delcotron.</b> Not available when C36 Rear Heater is specified with C49 Rear Window Defogger. Included when Z82 Trailing Special, C60 Front or C69 Front and Rear Air Conditioning, B3J Diesel Equipment Package, V10 Cold-Climate Package, C36 Rear Heater or C49 Rear Window Defogger is specified . . . . .	K81	N.A.	60.00	60.00
<b>Glass:</b>				
<b>Deep Tinted.</b> Not available when C49 Rear Window Defogger is specified. Includes tinted glass on passenger and driver's side door. Also includes dark laminated glass on side windows and rear door. . . . .	AJ1	N.A.	256.00	256.00
<b>Deep Tinted with Light Tinted Rear Window.</b> Not available when AJ1 Deep Tinted Glass is specified. Includes tinted glass on passenger, driver's side and rear doors. Also includes dark laminated glass on side windows . . . . .	AA3	N.A.	213.00	213.00
<b>Harness, Trailer Wiring: Heavy-Duty 7-Lead.</b> Included when Z82 Trailing Special is specified . . . . .	UY7	N.A.	43.00	43.00
<b>Headlamps:</b>				
<b>Halogen.</b> Not available when TT5 Halogen Hi-Beam Headlamps, V22 Deluxe Appearance Package or YE9 is specified . . . . .	TT4	N.A.	21.00	21.00
<b>Halogen Hi-Beam.</b> Available only when V22 Deluxe Front Appearance Package or YE9 is specified . . . . .	TT5	N.A.	16.00	16.00
<b>Headlamp Warning Buzzer.</b> . . . . .	T63	N.A.	11.00	11.00

(a) D & H Charges on vehicle and optional equipment include reimbursement to ordering Division for any tax that it has paid, incurred or agreed to pay thereon.  
 ◊ State and local taxes not included.



# C-K SUBURBAN

## OPTIONS AND ACCESSORIES WHEN INSTALLED BY GENERAL MOTORS

Prices shown are effective with initial shipment of 1983 model motor vehicles

Description	Option Number	Factory D&H(a)	List Price	Mfr's Suggested Retail Price ◊
<b>OTHER OPTIONS</b>				
<b>Headliner, Interior:</b> Full Length. Included when YE9, Z62, B3J Diesel Equipment Package, C60 Front or C69 Front and Rear Air Conditioning is specified. Includes dome lamp.	BB5	N.A.	143.00	143.00
<b>Heaters:</b>				
<i>Rear.</i>				
Without C60 Front or C69 Front and Rear Air Conditioning, B3J Diesel Equipment Package, C49 Rear Window Defogger or Z82 Trailing Special. Includes K81 66-Amp Generator	C36	N.A.	248.00	248.00
With C60 Front or C69 Front and Rear Air Conditioning, B3J Diesel Equipment Package, C49 Rear Window Defogger or Z82 Trailing Special.	C36	N.A.	188.00	188.00
<i>Front, Heavy Duty.</i> Available only when B3J Diesel Equipment Package is specified. Not available when C60 Front or C69 Front and Rear Air Conditioning is specified.	C42	N.A.	42.00	42.00
<b>Lamps: Roof Marker.</b> Five. Not available when YF5 California Emissions is specified.	U01	N.A.	48.00	48.00
<b>Lighter, Cigarette:</b> Included when YE9 or Z62 is specified.	U37	N.A.	29.00	29.00
<b>Mirrors, Exterior:</b> LH and RH.				
<i>Below-Eye-Line Type.</i> 9" x 6.5"				
Painted	D44	N.A.	47.00	47.00
Stainless Steel	D45	N.A.	76.00	76.00
<i>Camper Type.</i> 7.5" x 10.5". Stainless steel. Adjustable arm feature to provide field of vision for vehicles to 96" wide. Shipped loose for dealer installation	DF2	N.A.	89.00	89.00
<b>Moldings:</b>				
<i>Body Side, Black.</i> Bright with black insert. Not available when YE9, B85 Bright Body Side Molding or YG3 Deluxe Molding Package is specified. Included when YG1 Custom Molding Package, ZY3 Special Two-Tone Paint, ZY5 Exterior Decor Package or Z62 is specified. Includes lower side and rear moldings of black plastic with bright trim	B84	N.A.	111.00	111.00
<i>Body Side, Bright.</i> Not available when ZY3 Special Two-Tone Paint, ZY5 Exterior Decor Package, B84 Black Body Side Moldings or YG1 Custom Molding Package is specified. Included when YG3 Deluxe Molding Package or YE9 is specified. Includes bright plastic body side and rear lower moldings with black paint trim plus bright trim for front side marker lights and taillights				
Without Z62	B85	N.A.	139.00	139.00
With Z62	B85	N.A.	15.00	15.00
<i>Custom Package.</i> Not available when B85 Bright Body Side Moldings, YE9 or YG3 Deluxe Molding Package is specified. Included when ZY3 Special Two-Tone Paint or ZY5 Exterior Decor Package is specified. Includes bright trim for front side marker lamps and taillights, B84 Black Body Side and wheel opening moldings.				
Without Z62	YG1	N.A.	152.00	152.00
With Z62	YG1	N.A.	28.00	28.00
<i>Deluxe Package.</i> Included when YE9 is specified. Includes B85 Bright Body Side Moldings, bright trim for front side marker lamps and taillights and wheel opening moldings.				
Without ZY3 Special Two-Tone Paint, Z62 or ZY5 Exterior Decor Package.	YG3	N.A.	167.00	167.00
With ZY3 Special Two-Tone Paint or ZY5 Exterior Decor Package.	YG3	N.A.	15.00	15.00
With Z62	YG3	N.A.	43.00	43.00
<i>Guards, Door Edge.</i>	B93	N.A.	21.00	21.00
<b>Operating Convenience Package:</b> Available only when Z62, YE9, B3J Diesel Equipment Package, C60 Front or C69 Front and Rear Air Conditioning or BB5 Interior Headliner is specified. Includes A31 Power Windows and AU3 Power Door Locks	ZQ2	N.A.	456.00	456.00
<b>Preliminary Price Information</b>	B3W	N.A.	N.A.	N.A.
<b>Radio Equipment:</b>				
<i>AM Radio</i>	U63	N.A.	112.00	112.00
<i>AM/FM Radio</i>	U69	N.A.	171.00	171.00
<i>AM/FM Stereo Radio</i>	U58	N.A.	198.00	198.00
<i>AM/FM Stereo Radio with Stereo Cassette Tape</i>	UN3	N.A.	298.00	298.00
<i>Speaker, Rear Auxiliary.</i> Available only when U63 or U69 Radio is specified	U80	N.A.	20.00	20.00
<i>Windshield Antenna.</i> Included when U63, U69, UN3 or U58 Radio is specified	U76	N.A.	31.00	31.00
<b>Seats:</b> Seat trim matches front seat whether standard or optional. Includes seat area floor covering, floor insulation and (3) seat belts. <i>Dealer Note</i> - One of the following seat options must be specified. (Added weight includes passenger weight allowance of 150-lbs per seating position).				

(a) D & H Charges on vehicle and optional equipment include reimbursement to ordering Division for any tax that it has paid, incurred or agreed to pay thereon.

◊ State and local taxes not included.

## C-K SUBURBAN

### OPTIONS AND ACCESSORIES WHEN INSTALLED BY GENERAL MOTORS

Prices shown are effective with initial shipment of 1983 model motor vehicles

Description	Option Number	Factory D&H(a)	List Price	Mfr's Suggested Retail Price ◊
<b>OTHER OPTIONS</b>				
<i>Center only.</i> Non-adjustable type with independent LH and RH folding sections	AT5	N.A.	362.00	362.00
<i>Center and Rear.</i> Includes non-adjustable center and quick release removable type rear seats, (3) additional seat belts plus LH and RH rear arm rests with ashtrays.				
C1 Series only. Available only when PR or PW P235/75R-15 tires are specified.				
Without B3J Diesel Equipment Package. Also includes F59 Stabilizer .	AS3	N.A.	694.00	694.00
With B3J Diesel Equipment Package . . . . .	AS3	N.A.	659.00	659.00
C-K2 or K1 Series only. K1 Series available only when PR or PW P235/75R-15 tires are specified . . . . .	AS3	N.A.	659.00	659.00
<i>Optional Seat Not Desired</i> . . . . .	YG4	NO ADDITIONAL CHARGE		
<b>Shield, Fuel Tank:</b>				
C1-2 Series only.				
Without NE2 Fuel Tank . . . . .	NY1	N.A.	47.00	47.00
With NE2 Fuel Tank . . . . .	NY1	N.A.	119.00	119.00
K1-2 Series only. Includes transfer case skid plate.				
Without NE2 Fuel Tank . . . . .	NY1	N.A.	87.00	87.00
With NE2 Fuel Tank . . . . .	NY1	N.A.	159.00	159.00
<b>Shock Absorbers: Front and Rear, Heavy-Duty.</b> C1 Series only. Standard on C-K2 Series. Included when Z82 Trailing Special is specified . . . . .				
	F51	N.A.	32.00	32.00
<b>Shocks, Front Quad:</b> K1-2 Series only. Includes dual left and right hand shock absorbers on front, heavy-duty shock absorbers on rear and a front axle nose bumper to limit axle windup.				
K1 Series only. . . . .	Z75	N.A.	123.00	123.00
K2 Series only. . . . .	Z75	N.A.	91.00	91.00
<b>Speed Control, Electronic:</b> Not available when MM4 4-Speed Transmission is specified . . . . .				
	K34	N.A.	185.00	185.00
<b>Springs: Front, Heavy-Duty.</b> Capacity 2250-lb each.				
K1 Series only. Recommended for snowplow type usage only.				
Without Z75 Front Quad Shocks . Includes H.D. front and rear shocks . .	F60	N.A.	89.00	89.00
With Z75 Front Quad Shocks . . . . .	F60	N.A.	57.00	57.00
K2 Series only. . . . .	F60	N.A.	57.00	57.00
<b>Stabilizers:</b>				
<i>Front.</i> 1" diameter. C1 Series only. Included when AS3 Seats or B3J Diesel Equipment Package is specified. . . . .	F59	N.A.	35.00	35.00
<i>Front, Heavy-Duty.</i> 1.25" diameter. Standard on K1-2 Series . . . . .	F58	N.A.	18.00	18.00
<b>Steering:</b>				
<i>Power.</i> Standard on K1-2 Series. Included when Z82 Trailing Special or B3J Diesel Equipment Package is specified . . . . .	N41	N.A.	247.00	247.00
<i>Power, Not Desired.</i> C1-2 Series only. Not available when Z82 Trailing Special or B3J Diesel Equipment Package is specified . . . . .	N51	NO ADDITIONAL CHARGE		
<i>Steering Wheel: Comfortilt.</i> . . . . .	N33	N.A.	105.00	105.00
<b>Tanks, Fuel:</b> Replaces production fuel tank.				
<i>Approximately 31-Gallon Capacity for Gasoline and 32-Gallon Capacity for Diesel</i>	NK7	N.A.	41.00	41.00
<i>Approximately 40-Gallon Capacity for Gasoline and 41-Gallon Capacity for Diesel</i>	NE2	N.A.	96.00	96.00
<b>Towing Device: Two front towing hooks.</b> K1-2 Series only . . . . .	V76	N.A.	35.00	35.00
<b>Trailer Hitch:</b>				
<i>Deadweight Type.</i> Not available when Z82 Trailing Special is specified . . . .	VR2	N.A.	56.00	56.00
<i>Weight Distributing Platform Type.</i> Not available when VR2 Deadweight Type Trailer Hitch is specified. Included when Z82 Trailing Special is specified .	VR4	N.A.	150.00	150.00

(a) D & H Charges on vehicle and optional equipment include reimbursement to ordering Division for any tax that it has paid, incurred or agreed to pay thereon.  
 ◊ State and local taxes not included.

# C-K SUBURBAN

## OPTIONS AND ACCESSORIES WHEN INSTALLED BY GENERAL MOTORS

Prices shown are effective with initial shipment of 1983 model motor vehicles

Description	Option Number	Factory D&H(a)	List Price	Mfr's Suggested Retail Price ◊
<b>OTHER OPTIONS</b>				
<b>Trailer Special Equipment:</b> Includes VR4 Weight Distributing Hitch Platform, UY7 Wiring Harness and V02 Transmission Oil Cooler. See <i>Trailer Guide in Recreational Vehicles Section, for GVW Ratings with available power team combinations.</i>				
C1 Series only. Available only when 3.73 or 3.42 rear axle ratio is specified. Also requires V01 H.D. Radiator unless C60 Front or C69 Front and Rear Air Conditioning is specified. Also includes F51 H.D. Shock Absorbers.				
Without B3J Diesel Equipment Package. Available only when LS9 5.7 Liter Engine is specified. Also includes KC4 Engine Oil Cooler and N41 Power Steering.				
Without C60 Front or C69 Front and Rear Air Conditioning, C36 Rear Heater or C49 Rear Window Defogger. Also available only when V01 H.D. Radiator is specified. Also includes K81 66-amp generator . . .	Z82	N.A.	705.00	705.00
With C60 Front or C69 Front and Rear Air Conditioning, C49 Rear Window Defogger or C36 Rear Heater . . . . .	Z82	N.A.	645.00	645.00
With B3J Diesel Equipment Package . . . . .	Z82	N.A.	250.00	250.00
C2 Series only. Available only when MX0 or MX1 Automatic Transmission is specified.				
Without B3J Diesel Equipment Package. Also includes N41 Power Steering and KC4 Engine Oil Cooler.				
Without C60 Front or C69 Front and Rear Air Conditioning, C36 Rear Heater or C49 Rear Window Defogger. Also includes K81 66-Amp Generator . . . . .	Z82	N.A.	673.00	673.00
With C60 Front or C69 Front and Rear Air Conditioning, C36 Rear Heater or C49 Rear Window Defogger . . . . .	Z82	N.A.	613.00	613.00
With B3J Diesel Equipment Package . . . . .	Z82	N.A.	250.00	250.00
K1-2 Series only. K2 Series available only when MX0 or MX1 Automatic Transmission is specified. K1 Series available only when MX0 Automatic Overdrive Transmission and 3.42 or 3.73 Rear Axle Ratio is specified. K1 Series also requires V01 H.D. Radiator unless C60 Front or C69 Front and Rear Air Conditioning is specified.				
Without B3J Diesel Equipment Package. Also includes KC4 Engine Oil Cooler.				
Without C60 Front or C69 Front and Rear Air Conditioning, C36 Rear Heater or C49 Rear Window Defogger. Also includes K81 66-Amp Generator . . . . .	Z82	N.A.	426.00	426.00
With C60 Front or C69 Front and Rear Air Conditioning, C36 Rear Heater or C49 Rear Window Defogger . . . . .	Z82	N.A.	366.00	366.00
With B3J Diesel Equipment Package . . . . .	Z82	N.A.	250.00	250.00
<b>Wheel Trim:</b>				
Wheel Covers, C-K1 Series only. . . . .	P01	N.A.	39.00	39.00
Wheel Covers, Special, Bright Metal, C-K2 Series only. . . . .	PA1	N.A.	114.00	114.00
<b>Wheels:</b> C-K1 Series only. Not available when P215/75R15 tires are specified				
Rally. Includes special hub caps, trim rings and 15" x 8" wheels. . . . .	N67	N.A.	109.00	109.00
Styled. Four Wheels only. Includes 15" x 8" wheels. . . . .	PA6	N.A.	208.00	208.00
<b>Windows: Electric.</b>				
<b>Power Side Door Glass.</b> Available only when BB5 Headliner, Z62, YE9, B3J Diesel Equipment Package, C60 Front or C69 Front and Rear Air Conditioning is specified. Included when ZQ2 Operating Convenience Package is specified. .				
Power Tailgate. Available only when E55 Tailgate is specified . . . . .	A31	N.A.	271.00	271.00
Power Tailgate. Available only when E55 Tailgate is specified . . . . .	A33	N.A.	85.00	85.00
<b>Windshield Wiper System: Intermittent.</b> . . . . .	CD4	N.A.	49.00	49.00

(a) D & H Charges on vehicle and optional equipment include reimbursement to ordering Division for any tax that it has paid, incurred or agreed to pay thereon.  
 ◊ State and local taxes not included.

# **C/K SUBURBAN**

**CAB & BODY FEATURES  
CAB DIMENSIONS  
SEATING ARRANGEMENTS  
COLOR & TRIM CHARTS  
TWO-TONES**

# C/K SUBURBAN

## CUSTOM DELUXE/SIERRA FEATURES—STANDARD MODEL

The Custom Deluxe/Sierra standard models include the following items as standard equipment



### EXTERIOR

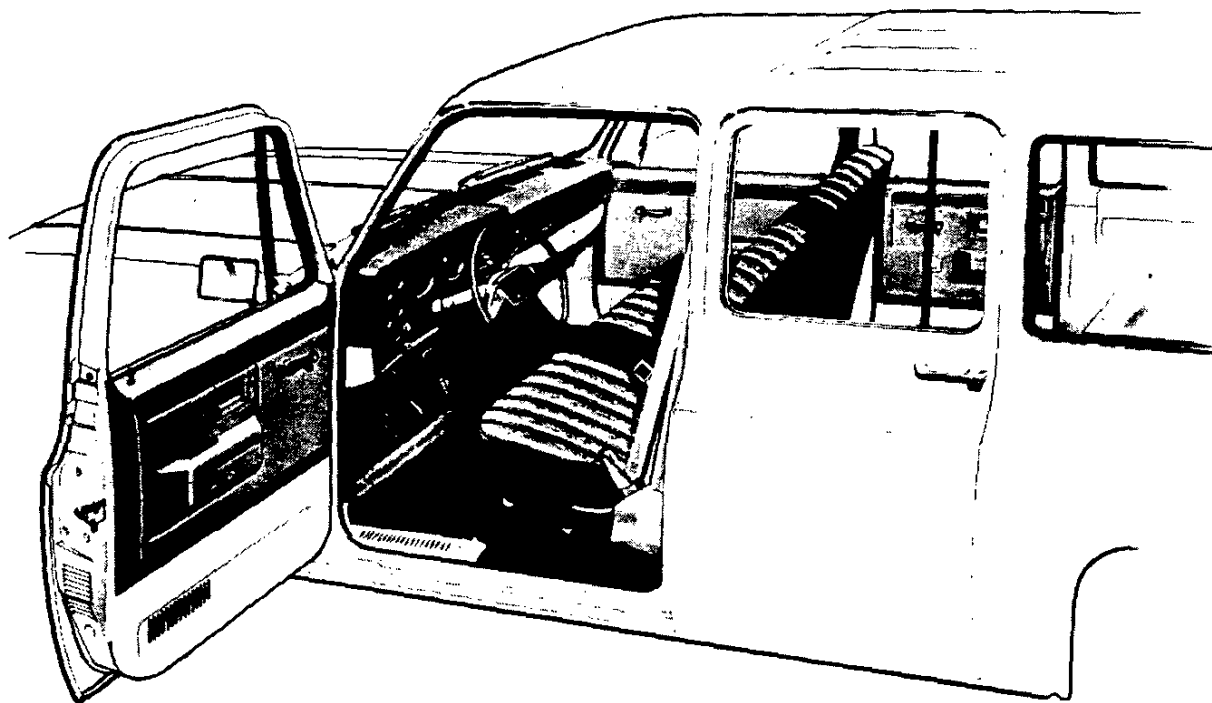
- **Bumpers:** Front and rear; chromed
- **Color:** See Interior and Exterior Color Selection Chart
- **Doors:** Four side doors, two LH and two RH; two rear panel doors (optional endgate with drop-glass available)
- **Glass:** Tinted; all windows; includes shade band on upper windshield
- **Grille and Headlamp Bezels:** Molded plastic; painted argent; integral Chevrolet emblem/GMC letters at center of grille
- **Horn:** Single, electric, low-note
- **Hub Caps:** Bright metal with black trim
- **Keys:** Two-key system with separate keys for ignition switch and door locks
- **Lights:**
  - Backup lamps: Two rear (integral with taillamps)
  - Combination parking/direction/hazard: Two front
  - Combination tail/stop/direction/hazard: Two rear
  - Headlamps: Two, rectangular
  - License plate lamp: Single rear
  - Side marker lamps with reflectors: Two front; two rear (integral with taillamps)
- **Mirrors:** RH and LH fixed arm with adjustable 5-7/16" wide x 4" high head; chrome finish
- **Moldings:** Bright; drip moldings over side and rear doors; headlamp and grille outline moldings
- **Nameplates:** Bright "Custom Deluxe/Sierra" nameplates, with series designation, on front fenders near doors; bright "Suburban" nameplate on RH rear door
- **Tools:** Mechanical jack and wheel wrench
- **Wheels:** Painted white
- **Windshield Wipers and Washers:** Electric, 2-speed wipers with bright finish on exposed metal portions; coordinated dual-orifice washers



# C/K SUBURBAN

## CUSTOM DELUXE/SIERRA FEATURES—STANDARD MODEL

The Custom Deluxe/Sierra standard models include the following items as standard equipment



### INTERIOR

- **Armrests:** RH and LH padded; integral with side door trim panels
- **Ashtrays:** In middle of instrument panel and in rear side door trim panels
- **Coat Hooks:** Over RH and LH rear side door openings
- **Colors:**
  - Painted areas: Same as exterior primary color choice
  - Interior trim: Coordinated with seat trim color choices
- **Floor Covering:** Embossed black rubber mats over entire floor area; color-keyed carpeting on rear face of seat backs on center seats (when optional center seats are ordered)
- **Heater and Defogger:** Deluxe-air
- **Hood Lock Release:** Handle located on LH side under instrument panel
- **Instrument Cluster Bezel:** Black crackle finish with bright trim
- **Instruments:**
  - Gages: Speedometer, odometer and fuel
  - Switches: Main, for control of exterior lights, instrument cluster lights, and interior lights; wiper-washer; headlamp beam (foot); ignition; direction signal (with lane change position); hazard warning; heater fan
  - Warning lights: Generator, oil pressure, engine temperature, seat belt, service-parking brake, direction/hazard signal, high beam
- **Instrument Panel Control Knobs:** Soft black plastic (except heater and wiper-washer controls) with white graphic identification
- **Instrument Panel Pad:** Color-keyed, energy-absorbing foam type with grained vinyl skin; has black crackle finish applique on RH side with bright, black, and silver trim and bright "Custom Deluxe/Sierra" nameplate
- **Insulation and Sound Deadening Material:** Dash (firewall), under floor mats and under front seat at center (includes extra-thick insulation in center seat area when optional seat is ordered)
- **Lights:** Instrument cluster and cab interior lights
- **Mirror, Rearview:** 10" prismatic with soft vinyl rim
- **Seat:** Full-width, full-depth foam bench-type front seat only with grained vinyl trim. See *Interior and Exterior Color Selection Chart* for color and trim availability
- **Seat Belts:** Front only; non-detachable combination lap and shoulder belts for outboard positions with automatic-locking retractors on lap belts; emergency-locking retractors on shoulder belts, and switch in driver's lap belt retractor for buzzer warning system; lap belt with manual adjustment for center position. All seat belts are color-keyed with pushbutton type buckles
- **Sill Plates:** Door-opening protection and floor mat retention; bright metal; partial for front side doors, full-length for rear side doors, and full-width front and rear for rear compartment platform
- **Spare Tire Carrier:** LH rear side
- **Steering Wheel and Column:** 16" black, soft plastic wheel with 2 spokes; black energy-absorbing steering column with anti-theft locking feature
- **Storage Box:** In RH side of instrument panel; door has bright turn-type latch release
- **Sunshades:** RH and LH padded; color-keyed
- **Trim Panels:** Color-keyed, embossed molded plastic on side doors with integral armrests; painted steel panels on rear quarter areas

# C/K SUBURBAN

## SCOTTSDALE/HIGH SIERRA MODEL OPTION—RPO Z62

This option includes all Custom Deluxe/Sierra standard model items plus the additions or substitutions listed below



Chevrolet model shown (GMC model available)

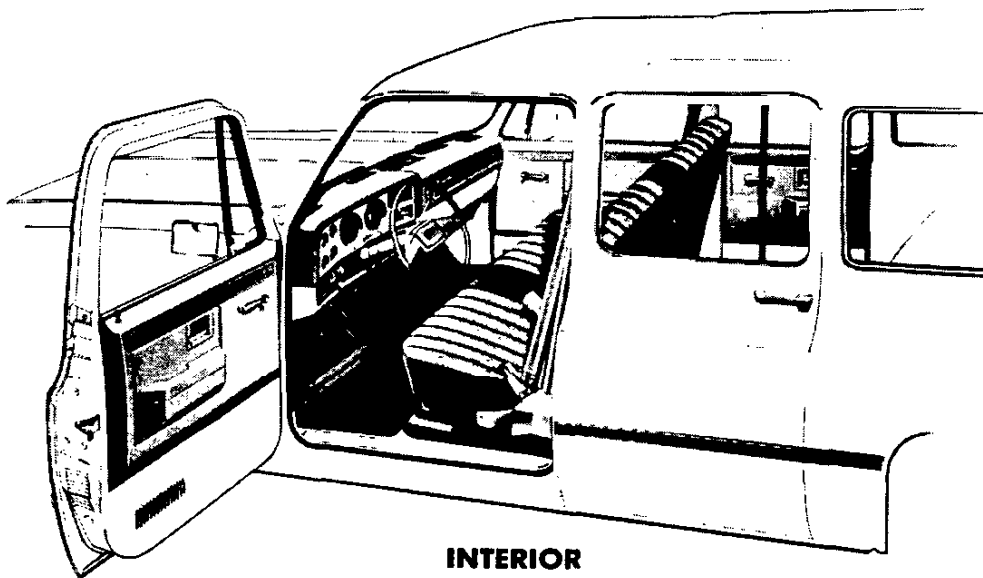
### EXTERIOR

• **Bright Appearance Items:**

- "Scottsdale/High Sierra" nameplates, with series designation, on front fenders
- Body side and rear molding trim
- Dome lamp trim
- Side marker lamp and taillamp trim

- Windshield reveal moldings
- Rear side window trim

- **Horn:** Additional, electric, high-note
- **Moldings:** Black plastic body side and rear moldings with bright trim



### INTERIOR

• **Bright Appearance Items:**

- "Scottsdale/High Sierra" nameplate on instrument panel pad
- Trim on instrument cluster bezel and instrument panel pad applique
- **Cigar Lighter:** With fiber optic illuminated ashtray
- **Dome Lamps:** Two; one front, one rear
- **Dome and Interior Lamp Switches:** Front side door actuated (dome and interior lamps also may be activated by main light switch)
- **Floor Covering:** Color-keyed rubber mat in front seat area (also in center and rear seat areas when optional center seat is ordered)
- **Headliner:** Full-length, color-keyed, perforated molded plastic with fiberglass blanket backing; includes matching retainer

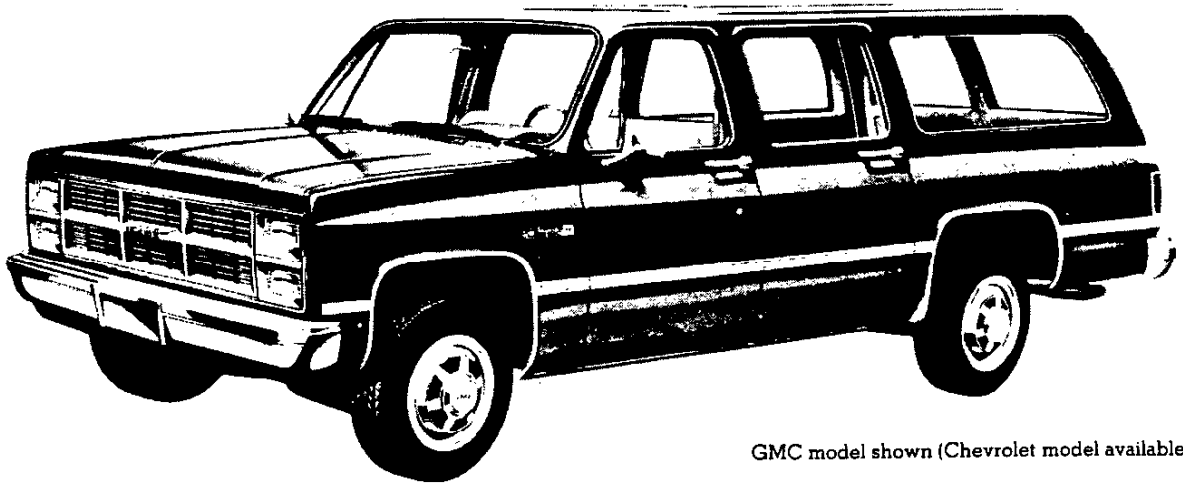
moldings

- **Insulation:** Under cowl panel and on back of headliner
- **Pillar Trim Panels:** Color-keyed molded plastic on windshield pillars and center door pillars
- **Seats:** Choice of: 1) embossed grained vinyl trim (standard); 2) cut pile velour cloth/vinyl trim (at extra cost) or 3) all-vinyl leather grain trim (at extra cost). See Interior and Exterior Color Selection Chart for color and trim availability
- **Sill Plates:** Full-length bright metal for front side doors
- **Spare Tire Cover:** Color-keyed carpet
- **Sunshades:** Mystic colored to match headliner

# C/K SUBURBAN

## SILVERADO/SIERRA CLASSIC MODEL OPTION—RPO YE9

This option includes all items in the Scottsdale model option plus the additions or substitutions listed below



GMC model shown (Chevrolet model available)

### EXTERIOR

- **Bright Appearance Items:**

- "Silverado/Sierra Classic" nameplates, with series designation, on front fenders
- Chrome-trimmed grille and headlamp bezels
- Chevrolet emblem/GMC letters at grille center
- Body side and rear door (or tailgate) moldings with black paint

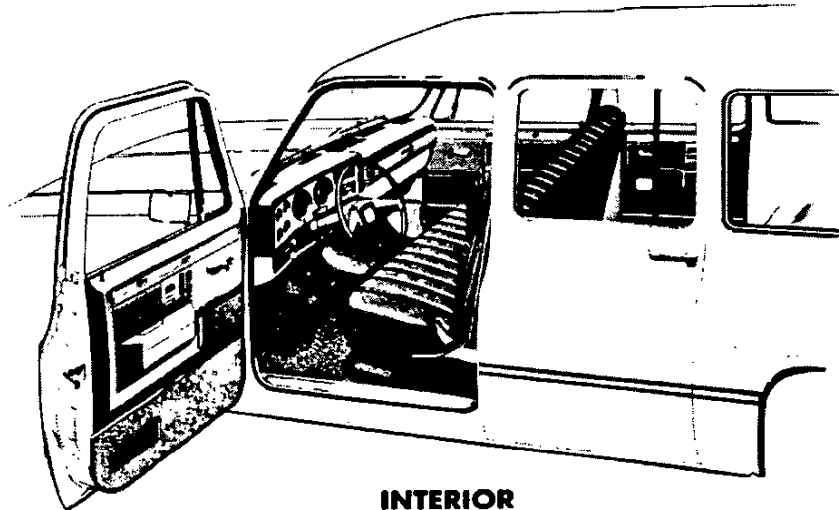
trim

Bright wheel opening lip moldings

- **Body-to-Fender Insulators**

- **Hood Insulator**

- **Special Headlamps:** Rectangular; dual RH and LH



### INTERIOR

- **Bright Appearance Items:**

- "Silverado/Sierra Classic" nameplate on instrument panel pad
- MM4 four-speed transmission shift lever (C1-2 models only)
- Trim on side door trim panels, and on horn button

- **Cowl Panel Trim:** Color-keyed molded plastic on entire surface of cowl side panels

- **Floor Covering:** Color-keyed carpeting; front seat area (also in center and rear seat areas and on wheelhousings)

- **Garnish Moldings:** Color-keyed molded plastic for body sides (in side rear window areas), lower rear lock pillars, and upper rear doors

- **Headliner:** Full length, color-keyed, foam backed cloth; includes matching retainer moldings

- **Instrument Cluster:** Voltmeter, engine temperature gage, and oil pressure gage replace warning lights; includes pewter-toned brush-finished bezel

- **Instrument Panel Pad Applique:** Pewter-toned brushed finish with bright, black, and silver trim

- **Insulation:** Extra-thick front compartment floor insulators, including full-width insulator under front seat (also in center and

rear seat areas when optional center seat is ordered), on back of headliner, and on body side trim panels

- **Seats:** Choice of: 1) all-vinyl leather grain trim or 2) cut pile velour cloth/vinyl trim. See Interior and Exterior Color Selection Chart for color and trim availability. Note: High back bucket seats are available (at extra cost) in Custom Vinyl or Custom Cloth (includes console)

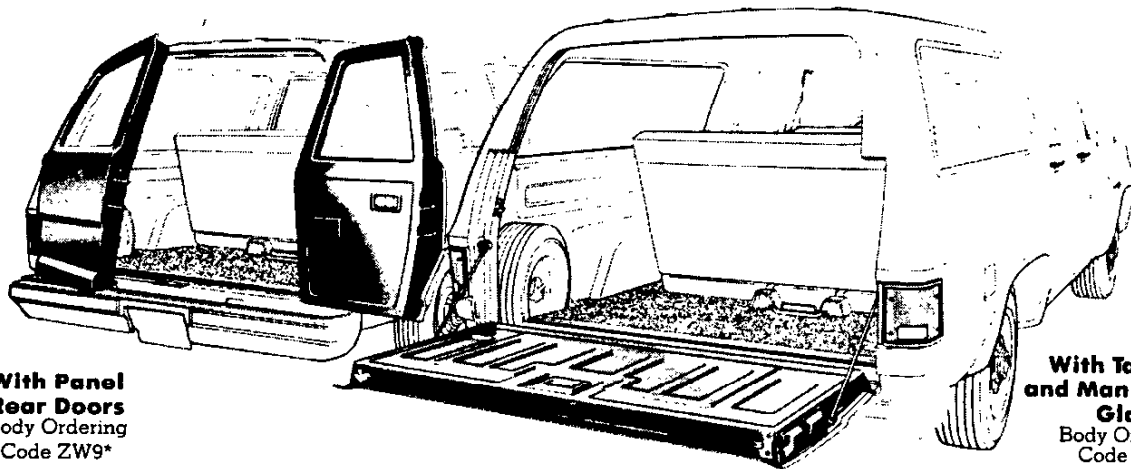
- **Trim Panels:** Color-keyed molded plastic door trim panels (with door closing assist strap and vinyl stowage pockets; on front door units only); includes pewter-toned brush-finished upper decorative inserts having bright, black, and silver borders, cloth inserts in armrest area plus carpeting on lower portions. Vinyl-covered color-keyed molded plastic body side trim panels (in rear quarter areas) with carpet trim. Vinyl-covered color-keyed hardboard lower rear door trim panels with carpet trim. (Color-keyed molded plastic tailgate trim panel with carpet trim for models with optional tailgate)

- **Steering Wheel:** Bright trim on horn button

- **Visor Mirror:** On RH sun visor



## C/K SUBURBAN REAR DOOR TYPES



**With Panel  
Rear Doors**  
Body Ordering  
Code ZW9\*

**With Tailgate  
and Manual Drop  
Glass**  
Body Ordering  
Code E55\*

Suburban models have 4 side doors, two front and two rear. Front side doors are equipped with drop-glass and ventipane assemblies; the rear side doors have a drop-glass in the forward portion and fixed glass in the rear portion. The rear quarter windows have fixed glass.

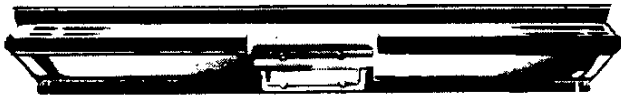
All Suburbans ordered with Body Ordering Code ZW9 have panel-type rear doors incorporating fixed glass, positive fork-cam latches, and an outside key lock. A 2-position, strap-type check on each door permits either a 118- or 162-degree door opening, depending on how the retaining pin is positioned; full door opening of 172-degrees is obtained by removing the retaining pin.

Suburbans ordered with Body Ordering Code E55 have a tailgate with a manually-controlled curved drop glass. Operation of the window is through an articulated crank-type regulator handle on the tailgate outer panel; a key lock cylinder is concealed in the regulator handle, and must be unlocked before the window can be lowered. After the window is lowered, the tailgate can be lowered by moving the release handle at the upper center of the tailgate inner panel. When the tailgate is open, it is supported by reel-type cables. Embossments on the tailgate inner panel facilitate loading of large objects. An optional electric tailgate window is available by ordering RPO A33.

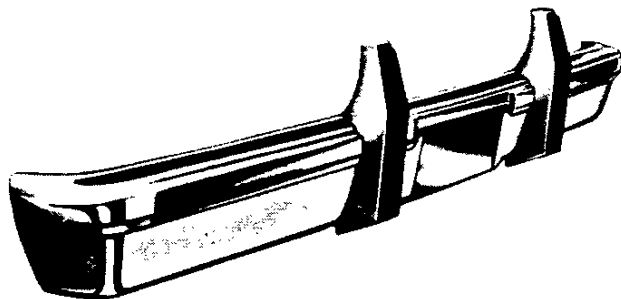
\*Both models shown with optional folding center and removable rear seats

## CUSTOM OPTIONS

### Chromed Bumpers & Chromed Bumpers with Rub Strips (RPO VE5)



Chromed bumpers with rub strips (RPO VE5) are available optionally on all Suburban models.



### Chromed Front Bumper Guards (RPO V31)

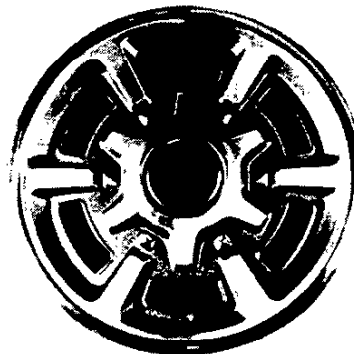
Chromed front bumper guards (RPO V31) with rub strips are available optionally on Suburban models. Not available when chromed bumpers with rub strips are ordered.

### Custom Trim Moldings (RPO B84, B96, YG1)

Body side and rear trim moldings (RPO B84) are black plastic with bright trim and are available for standard Suburban models. They are included in the Custom Molding Package (RPO YG1) for standard and Scottsdale/High Sierra models which also includes bright wheel opening moldings with black paint trim (RPO B96) and bright trim for front side marker lamps and taillamps.

(RPO B85, B96, YG3)

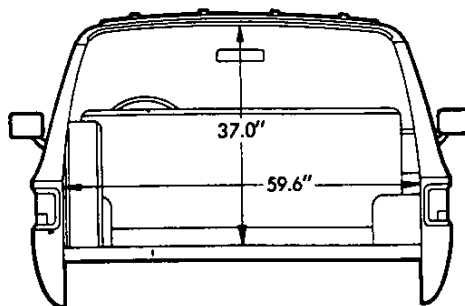
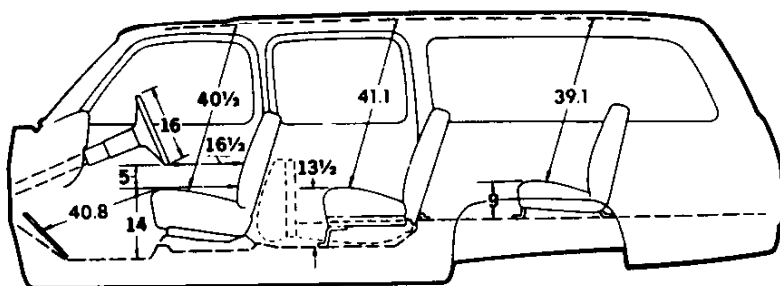
Bright plastic body side and rear moldings with black paint trim (RPO B85) are available for standard and Scottsdale/High Sierra Suburban models. They are included in the Deluxe Molding Package (RPO YG3) which also includes the wheel opening moldings (RPO B96) and other bright lamp trim items described above for RPO YG1.



### Wheel Covers

Stainless steel wheel covers are available on all Suburban models. The front units for K10/1500-20/2500 models with 4WD have a cut-out at the center to clear the axle hubs.

## C/K SUBURBAN DIMENSIONS



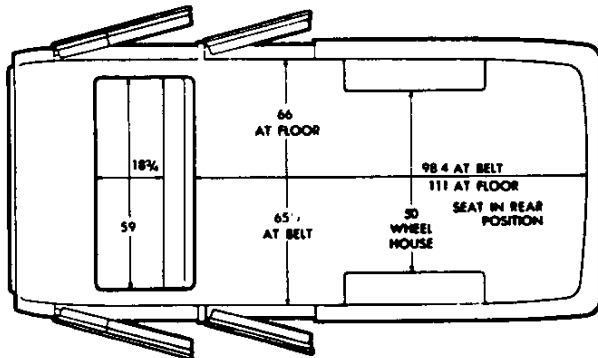
### GLASS AREA (Sq. in.)

Windshield ..... 1447  
 Front side door, including  
 ventipane (each side) ..... 546  
 Rear side door (each side) ..... 488

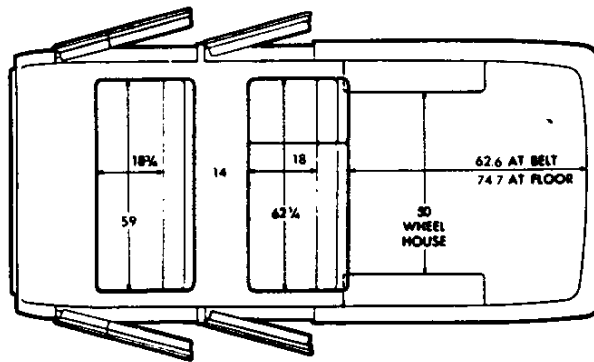
Side rear window (each side) ... 1074  
 Rear:  
 ZW9 panel doors (total) ..... 654  
 E55 tailgate ..... 1041

### SEATING ARRANGEMENTS

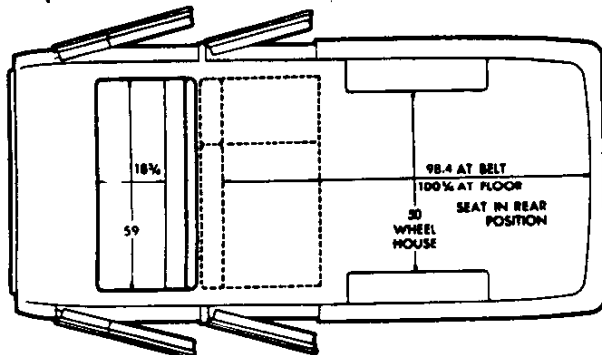
**Front Seat**  
 Standard full-depth foam front seat



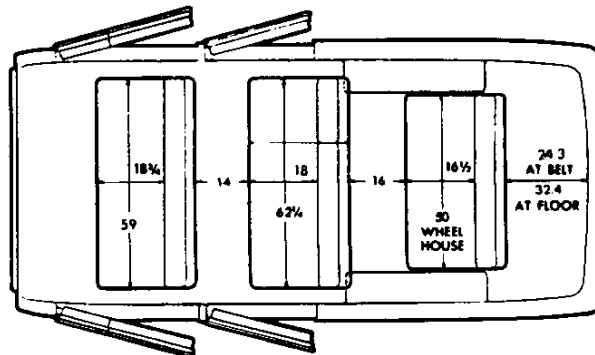
**Front and Folding Center Seats**  
 Standard front and RPO AT5 folding center seats



**Front and Folding Center Seats**  
 Standard front and RPO AT5 folding center seats  
 (Center seats shown in folded position)



**Front, Folding Center and Rear Removable Seats**  
 Standard front, RPO AT5 folding center and  
 RPO AS3 removable rear seats



## C/K SUBURBAN

### INTERIOR AND EXTERIOR COLOR AVAILABILITY CHART

**Please Note:** Exterior and interior paint combinations shown in chart below are those recommended by Chevrolet/GMC. Any exterior color combination may be ordered with any available seat trim if the particular combination is desired by a customer, and ZY5 Exterior Decor Package is not specified. For special paint applications please contact the Zone Office.

INTERIOR COLORS		Decor	Almond	Blue	Carmine	Gray	
<b>CUSTOM DELUXE/SIERRA</b> Vinyl Bench Seat		Std.	VAA1	VDD1			
<b>SCOTSDALE/HIGH SIERRA</b> Vinyl Bench Seat		Z62	VAA1	VDD1			
Custom Cloth Bench Seat			LAA1	LDD1			
Custom Vinyl Bench Seat			XAA1	XDD1			
<b>SILVERADO/SIERRA CLASSIC</b> Custom Cloth Bench Seat		YE9	LAA1	LDD1	LRR1	LTT1	
Custom Vinyl Bench Seat			XAA1	XDD1	XRR1		
Custom Vinyl High Back Bucket Seats			XAA4	XDD4	XRR4		
Custom Cloth High Back Bucket Seats			LAA4	LDD4	LRR4	LTT4	
EXTERIOR COLORS w/ZY1 or ZY3 PAINT	Primary	Secondary	RECOMMENDED INTERIOR TRIM COLOR				
<b>ALMOND</b>	59	59	X				
White, Frost	59	12	X				
<b>BLACK, MIDNIGHT</b>	19	19	X		X	X	
Silver (Metallic)	19	17				X	
White, Frost	19	12				X	
<b>BLUE, LIGHT (Metallic)</b>	21	21		X		X	
Blue, Midnight	21	29		X		X	
White, Frost	21	12		X			
<b>BLUE, MIDNIGHT</b>	29	29	X	X		X	
Blue, Light (Metallic)	29	21		X			
Silver (Metallic)	29	17		X		X	
White, Frost	29	12		X			
<b>BRONZE, LIGHT (Metallic)</b>	63	63	X				
Almond	63	59	X				
White, Frost	63	12	X				
<b>MAHOGANY (Metallic)</b>	68	68	X				
Almond	68	59	X				
White, Frost	68	12	X				
<b>RED, CARMINE</b>	70	70	X		X	X	
Almond	70	59			X		
Silver (Metallic)	70	17			X	X	
White, Frost	70	12			X		
<b>SILVER (Metallic)</b>	17	17		X	X	X	
Black, Midnight	17	19				X	
Blue, Light (Metallic)	17	21		X		X	
Blue, Midnight	17	29		X			
Red, Carmine	17	70			X		
White, Frost	17	12				X	
<b>WHITE, FROST</b>	12	12	X	X	X	X	
Almond	12	59	X				
Black, Midnight	12	19				X	
Blue, Light (Metallic)	12	21		X			
Blue, Midnight	12	29		X			
Red, Carmine	12	70			X		
Silver (Metallic)	12	17				X	
<b>YELLOW, COLONIAL</b>	53	53	X				
White, Frost	53	12	X				
<b>w/ZY5 Paint (Interior and Exterior Combinations Shown are the Only Combinations Available)</b>						<b>STRIPE COLOR</b>	
<b>BLACK, MIDNIGHT/Silver (Metallic)</b>	19	17				X	Vermillion/Light Slate
<b>BLUE, LIGHT (Metallic)/Silver (Metallic)</b>	21	17		X		X	Dark Blue/Light Slate
<b>BLUE, MIDNIGHT/Silver (Metallic)</b>	29	17		X		X	Vermillion/Light Slate
<b>BRONZE, LIGHT (Metallic)/Almond</b>	63	59	X				Dark Brown/Almond
<b>RED, CARMINE/Almond</b>	70	59	X				Dark Carmine/Almond
<b>RED, CARMINE/Silver (Metallic)</b>	70	17			X	X	Vermillion/Light Slate
<b>SILVER (Metallic)/Black, Midnight</b>	17	19				X	Vermillion/Black
<b>SILVER (Metallic)/Blue, Midnight</b>	17	29				X	Light Blue (Metallic)/Dark Blue

## C/K SUBURBAN

### SOLID AND TWO-TONE\* EXTERIOR COLOR COMBINATIONS

The application of paint for solid and two-tone exterior color combinations is shown below.

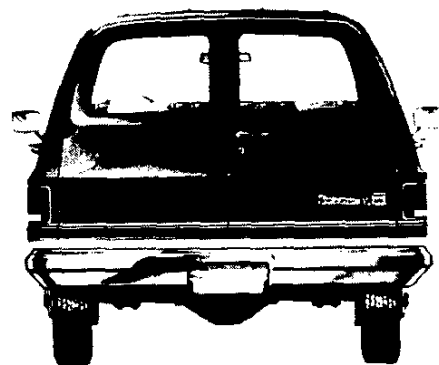
**Solid color** paint (ZY1) is standard on all models. All painted areas of the body and front end sheet metal are the same color.



GMC model shown (Chevrolet model available)

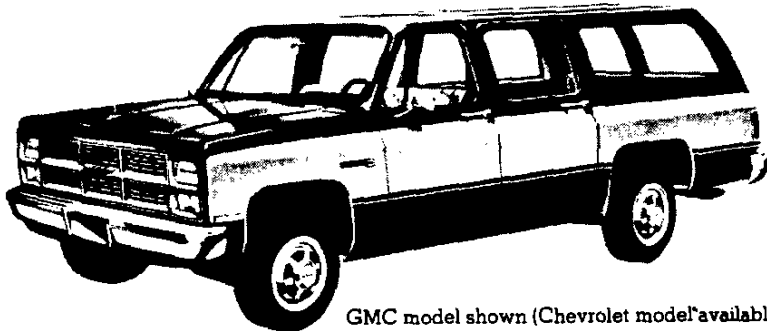


Chevrolet model shown (GMC model available)



**Special two-tone** (ZY3) paint colors include the YG1 molding package consisting of black vinyl body side and rear moldings with bright trim, bright wheel opening moldings, and bright trim for front side marker lights and tail lights (except with the YG3 molding package or the Silverado/

Sierra Classic Model Option where bright body side and rear moldings with black paint trim are substituted). The primary color is applied to the areas above the moldings (including the roof). The secondary color is applied to the areas below the moldings.



GMC model shown (Chevrolet model available)

**Exterior Decor Package** (ZY5) paint colors and trim are available in a choice of eight combinations (see chart on page 1). The package includes the moldings described under Special Two-Tone. In addition, it includes dual-tone body side and rear tape decal striping keyed to the exterior body color. This striping is applied to the front fenders, side doors and body sides and rear a few inches above the styling crease line. The areas above the striping and below the molding are painted the primary paint color. The secondary color is used between the striping and the molding. A bright spring-loaded, stand-up type hood ornament is also included except on diesel engine equipped models where a hood ornament is already included.

\*Optional at extra cost.

---

# NOTES