

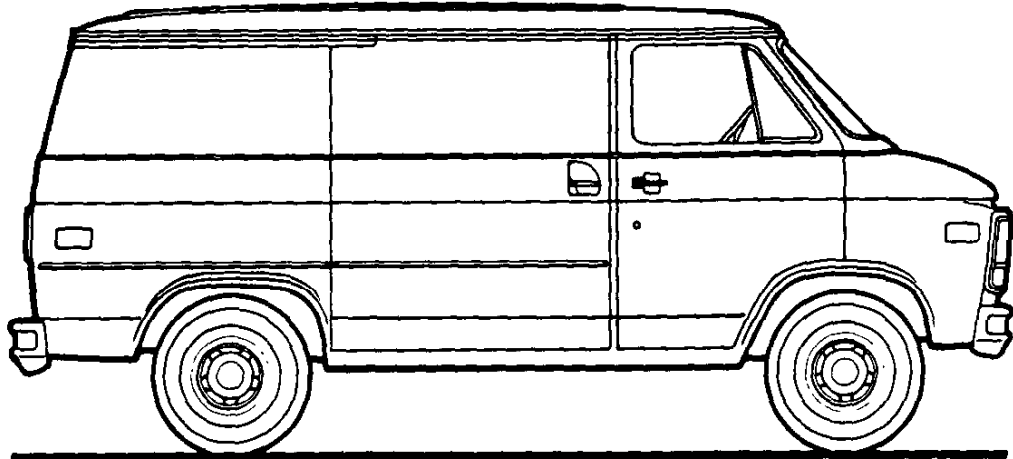


ORIGINAL

1983

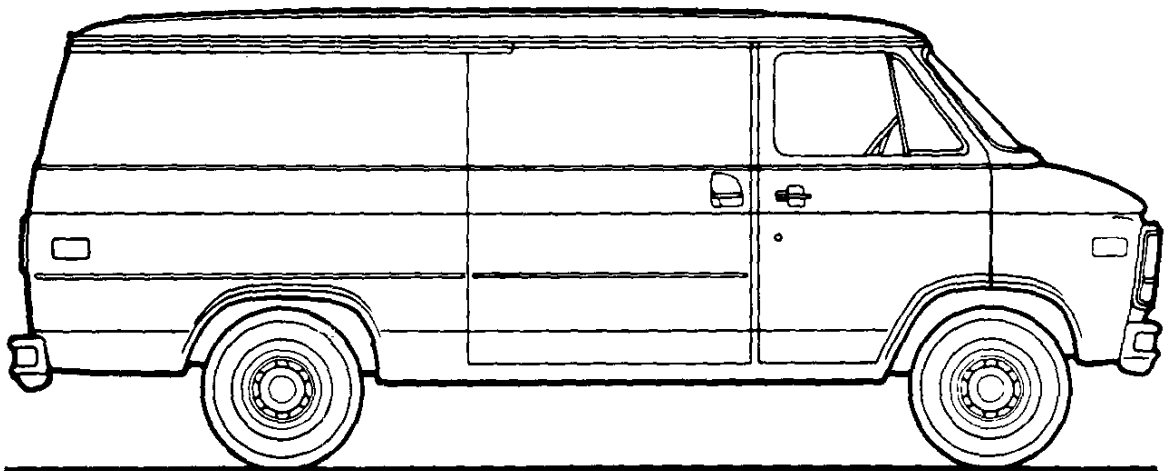
CHEVY VAN/VANDURA

CHEVY VAN/VANDURA MODEL SELECTOR



SERIES	MODEL NUMBER		BODY ORDERING CODE
	110" WB	125" WB	
G10/1500	G11005	G11305	ZW9
G20/2500	G21005	G21305	ZW9
* G30/3500	—	G31305	ZW9
G30/3500/C6P	—	G31305	ZW9 & C6P

*Not available for registration in the State of California.



CHEVY VAN/VANDURA

STANDARD SPECIFICATIONS

(See Gray Tab Section for Specification Details)

Series	G10/1500	G20/2500
Engine	4.1 Liter, 250 2-bbl. L6 11", 124 sq. in.	
Base Equip.		
Clutch		
Air Filter	Oiled-paper Element	
Oil Filter	Throwaway Type	
Exhaust System	Single; Aluminized	
Emission Control Systems	See Engine & Cooling Section for specific model applications	
Suspension, Front	Independent; Coil Springs	
Capacity	3400 lb.	3400 lb.
Springs @ Ground	1310 lb. ea.	1700 lb. ea.
Shock Absorbers	25mm dia.	25mm dia.
Suspension, Rear	Salisbury Axle; Hypoid Drive; Two-stage Multi-leaf Springs	
Axle Capacity	3500 lb.	3500 lb.
Axle Ratio	3.08	3.42
Springs, @ Ground	1200 lb. ea.	1700 lb. ea.
Shock Absorbers	25mm dia.	25mm dia.
Brakes	Hydraulic; Self-adjusting	
Front	Disc; 11.86" Rotor	Disc; 11.86" Rotor
Rear	Drum; 11" x 2"	Drum; 11.15" x 2.75"
Booster	—	Dual Diaphragm
Parking	Cable to Rear Wheels	
Electrical	12 Volt; Negative Ground	
Battery	315 CCA♦ @ 0°F.	
— Freedom Type	75 min. @ 80°F.	
— Reserve Capacity	37 amp.	
Delcotron Generator		
Frame	Integral Body-frame	
Fuel Tank (nominal capacity)	22 gal.	
Steering Gear Type	Manual; Recirculating Ball Gear	Integral Power
Linkage	Parallelogram	
Transmission	Fully Synchronized 3-Speed Manual	
Shift Location	Floor	
Tires	(5) FR78-15B(4PR)	(4) P225/75R15
Wheels	(5) Disc 15" x 6"	(5) Disc 15" x 6"

♦CCA-Cold Cranking Amps

CHEVY VAN/VANDURA

STANDARD SPECIFICATIONS

(See Gray Tab Section for Specification Details)

Series	*G30/3500	G30/3500/C6P
Engine		
Base Equip.	4.1 Liter, 250 2-bbl. L6	5.7 Liter, 350 4-bbl. V8
Clutch	11", 124 sq. in.	—
Air Filter	Oiled-paper Element	
Oil Filter	Throwaway Type	
Exhaust System	Single; Aluminized*	
Emission Control Systems	See Engine & Cooling Section for specific model applications	
Suspension, Front	Independent; Coil Springs	
Capacity	3900 lb.	3900 lb.
Springs @ Ground	1700 lb. ea.	1950 lb. ea.
Shock Absorbers	25mm dia.	25mm dia.
Stabilizer Bar	—	1.06" dia.
Suspension, Rear	Salisbury Axle; Hypoid Drive; Two-stage Multi-leaf Springs	
Axle Capacity	5700 lb.	5700 lb.
Axle Ratio	3.75	4.09
Springs, @ Ground	2100 lb. ea.	2700 lb. ea.
Shock Absorbers	25mm dia.	25mm dia.
Brakes	Hydraulic; Self-adjusting	
Front	Disc; 12.5" Rotor	Disc; 12.5" Rotor
Rear	Drum; 13" x 2.5"	Drum; 13" x 2.5"
Booster	Dual Diaphragm	Dual Diaphragm
Parking	Cable to Rear Wheels	
Electrical	12 Volt; Negative Ground	
Battery		
— Freedom Type	315 CCA♦ @ 0°F.	390 CCA♦ @ 0°F.
— Reserve Capacity	75 min. @ 80°F.	90 min. @ 80°F.
Delcotron Generator	37 amp.	
Frame	Integral Body-frame	
Fuel Tank (nominal capacity)	22 gal.	
Steering Gear Type	Integral Power	
Transmission	Fully Synchronized 3-Speed Manual	Automatic
Shift Location	Floor	Steering Column
Tires	(4) 8.75R-16.5C (6PR)	(4) 8.75-16.5E (10PR)
Wheels	(5) Disc 16.5" x 6.75"	(5) Disc 16.5" x 6.75"

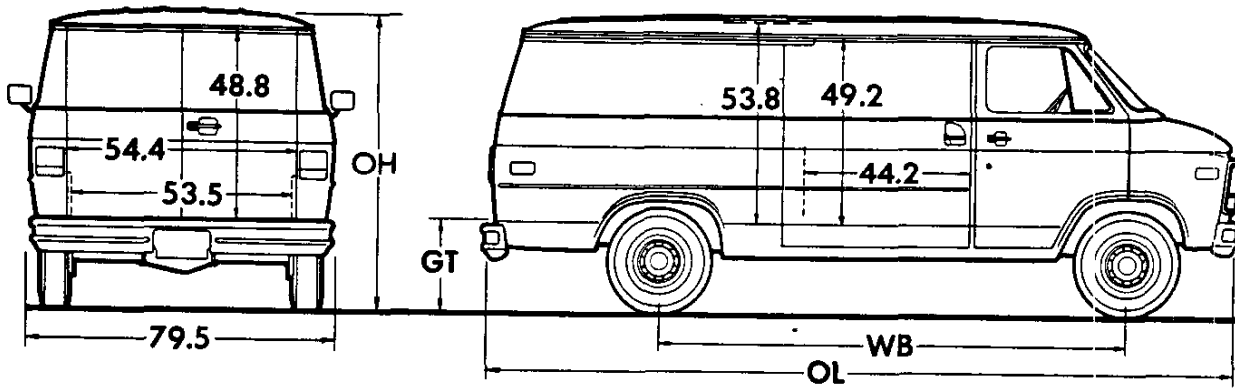
*Not available for registration in the State of California

*Dual tail pipe on G30/3500/C6P models

♦CCA-Cold Cranking Amps

CHEVY VAN/VANDURA

Body Ordering Codes:
Chevy Van/Vandura—ZW9



Side slide-in opening clearance 44.2"; max. box cargo height 49.2" with standard front passenger seat.

Rear slide-in opening clearance 52" with spare tire in position or 53.5" with spare tire removed; height 48.8"

Sign Panel Area (side)
110" WB—42" x 85"
125" WB—42" x 109"

Capacity (cu ft)
110" WB—246
125" WB—296

Series	Ground Clearance (in)*	
	Front	Rear
G1	6.3	6.7
G2	7.3	7.3
G3	9.0	7.0

Model	Engine No. Cyl.	Dimensions (in)*				Curb Weight (lb)			Model Weight (lb)*		
		WB	OL	OH	GT	Front	Rear	Total	Front	Rear	Total

G10/1500 SERIES

G11005	6	110	178.2	79.4	25.0	2136	1575	3711	2242	1619	3861
G11305	6	125	202.2	79.2	24.6	2173	1683	3856	2284	1722	4006

G20/2500 SERIES

G21005	6	110	178.2	79.8	25.4	2188	1624	3812	2294	1668	3962
G21305	6	125	202.2	79.5	25.4	2225	1733	3958	2336	1772	4108

G30/3500 SERIES

G31305▲	6	125	202.2	81.9	28.0	2429	1970	4399	2535	2014	4549
G31305 (W/C6P)	8	125	202.2	81.9	28.0	2445	1975	4420	2556	2014	4570

*Dimensions with standard equipment, unloaded.

*Model Weight includes Curb Weight plus occupants (standard seating capacity x 150 lb). Total Model Weight may vary as much as ±150 lbs. to allow for production build variation.

▲Not available for registration in the State of California.

CHEVY VAN/VANDURA

POWER TEAMS

ALL STATES EXCEPT CALIFORNIA

G10/1500 SERIES

POWER TEAMS (MUST ORDER ENGINE, TRANSMISSION AND REAR AXLE)
 (Consult GVWR Selector and Tire Chart to insure tire capacity and availability)

ENGINE	TRANSMISSION			AXLES				GVWR	
	3-SP	4-SP	AUTO	2.73	3.08	3.42	3.73		
W/NA5 STANDARD EMISSION EQUIPMENT									
LE3 L6 4.1 Liter (250-2BBL)	MM3			GQ1	GU4	—	—	4900	
	MM3	MM7		—	GQ1	GU6	—	4900	
			MX0		—	—	GQ1	GT4	4900
	MM3			GQ1	#GU4	—	—	5400	
		MM7		—	#GQ1	GU6	—	5400	
	MM3		MX0		—	—	GQ1	GT4	5400
		MM7			GQ1	#GU4	—	—	5600
	MM3			—	#GQ1	GU6	—	—	5600
		MM7		MX0	—	—	GQ1	GT4	5600
	MM3			—	GQ1	—	—	—	6000
		MM7			—	—	GQ1	—	6000
	MM3		MX0		—	—	GQ1	GT4	6000
MM7				—	—	GQ1	—	6000	
LE9 V8 5.0 Liter (305-4BBL)	MM3	MM7		GQ1	GU4	—	—	4900	
	MM3		MX0	—	GQ1	GU6	—	4900	
		MM7			GQ1	#GU4	—	—	5400
	MM3		MX0		—	#GQ1	GU6	—	5400
		MM7			GQ1	#GU4	—	—	5600
	MM3		MX0		—	#GQ1	GU6	—	5600
		MM7			—	GQ1	—	—	6000
	MM3		MX0		—	—	GQ1	—	6000
MM7				—	—	GQ1	—	6000	
W/NA6 HIGH ALTITUDE EMISSION EQUIPMENT									
LE3 L6 4.1 Liter (250-2BBL)	MM3	MM7		—	—	GQ1	—	4900	
	MM3		MX0	—	—	GQ1	GT4	4900	
		MM7			—	—	GQ1	—	5400
	MM3		MX0		—	—	GQ1	GT4	5400
		MM7			—	—	GQ1	—	5600
	MM3		MX0		—	—	GQ1	GT4	5600
MM7				—	—	GQ1	—	6000	
MM3		MX0		—	—	GQ1	GT4	6000	
	MM7			—	—	GQ1	—	6000	
LE9 V8 5.0 Liter (305-4BBL)	MM3			GQ1	GU4	—	—	4900	
	MM3	MM7	MX0	—	GQ1	GU6	—	4900	
					GQ1	#GU4	—	—	5400
	MM3		MX0		—	#GQ1	GU6	—	5400
		MM7			GQ1	#GU4	—	—	5600
	MM3		MX0		—	#GQ1	GU6	—	5600
		MM7			—	GQ1	—	—	6000
	MM3		MX0		—	—	GQ1	—	6000
MM7				—	—	GQ1	—	6000	

CALIFORNIA ONLY

G10/1500 SERIES

ENGINE	TRANSMISSION			AXLES				GVWR	
	3-SP	4-SP	AUTO	2.73	3.08	3.42	3.73		
W/YF5 CALIFORNIA EMISSION REQUIREMENTS									
LE3 L6 4.1 Liter (250-2BBL)	MM3			—	GQ1	GU6	—	4900	
	MM3	MM7	MX0	—	—	GQ1	GT4	4900	
					—	#GQ1	GU6	—	5400
	MM3		MX0		—	—	GQ1	GT4	5400
		MM7			—	#GQ1	GU6	—	5600
	MM3		MX0		—	—	GQ1	GT4	5600
		MM7			—	—	GQ1	—	6000
	MM3		MX0		—	—	GQ1	—	6000
MM7				—	—	GQ1	—	6000	
LF3 V8 5.0 Liter (305-4BBL)			MX0	—	GQ1	—	—	4900	
			MX0	—	#GQ1	—	—	5400	
			MX0	—	#GQ1	—	—	5600	
			MX0	—	GQ1	—	—	6000	

#With G80 Locking Differential Reqs J55 Brakes

CHEVY VAN/VANDURA
POWER TEAMS
ALL STATES EXCEPT CALIFORNIA

G20/2500 SERIES

POWER TEAMS (MUST ORDER ENGINE, TRANSMISSION AND REAR AXLE)
 (Consult GVWR Selector and Tire Chart to insure tire capacity and availability)

ENGINE	TRANSMISSION			AXLES			GVWR
	3-SP	4-SP	AUTO	3.08	3.42	*3.73	
W/NA5 STANDARD EMISSION EQUIPMENT							
LE3 L6 4.1 Liter (250-2BBL)	MM3	MM7	MXO	—	GQ1	*GT4	6600
LE9 V8 5.0 Liter (305-4BBL)		MM7		GQ1	GU6	—	6600
			MXO	GQ1	GU6	\$GT4	6600
LH6 Diesel 6.2 Liter V8 (379 Cu. In.)(Reqs B3J)		MM7		GQ1	GU6	—	6600
			MXO	GQ1	GU6	\$GT4	6600
W/NA6 HIGH ALTITUDE EMISSION EQUIPMENT							
LE3 L6 4.1 Liter (250-2BBL)	MM3	MM7	MXO	—	GQ1	*GT4	6600
LE9 V8 5.0 Liter (305-4BBL)		MM7		—	GQ1	—	6600
			MXO	—	GQ1	*GT4	6600
LH6 Diesel 6.2 Liter V8 (379 Cu. In.)(Reqs B3J)		MM7	MXO	GQ1	GU6	\$GT4	6600

*N/A G80 Locking Differential.
 \$Reqs Z82 Trailing Special, N/A G80 Locking Differential.

G30/3500 SERIES

ENGINE	TRANSMISSION			AXLES			GVW
	3-SP	AUTO		3.73	4.10		
W/NA5 STANDARD EMISSION EQUIPMENT (w/LT9 or LL4 Engine Satisfies High Altitude Emission Requirements)							
LE3 L6 4.1 Liter (250-2BBL)(N/A C6P)	MM3		MXO	GQ1	—		7100
LT9 V8 5.7 Liter (350-4BBL)(Reqs C6P)			MXO/1	GQ1	GT5		8600
LL4 Diesel 6.2 Liter V8 (379 Cu.In.) (Reqs C6P and B3J)			MXO/1	GQ1	GT5		8600
W/NA6 HIGH ALTITUDE EMISSION EQUIPMENT							
LE3 L6 4.1 Liter (250-2BBL)(N/A C6P)	MM3		MXO	GQ1	—		7100
■ LL4 Diesel 6.2 Liter V8 (379 Cu.In.) (Reqs C6P and B3J)			MXO/1	GQ1	GT5		8600

■ High Altitude Emission Equipment (FOR EXHAUST SMOKE REDUCTION PURPOSES AT HIGH ALTITUDE; NOT REQUIRED TO SATISFY HIGH ALTITUDE EMISSION REGULATIONS)(REQS LL4 ENG)

CALIFORNIA ONLY
G20/2500 SERIES

ENGINE	TRANSMISSION			AXLES			GVW
	3-SP	4-SP	AUTO	3.08	3.42	*3.73	
W/YF5 CALIFORNIA EMISSION REQUIREMENTS							
LE3 L6 4.1 Liter (250-2BBL)	MM3	MM7	MXO	—	GQ1	*GT4	6600
LF3 V8 5.0 Liter (305-4BBL)			MXO	GQ1	—	—	6600
LH6 Diesel 6.2 Liter V8 (379 Cu. In.)(Reqs B3J)		MM7	MXO	GQ1	GU6	—	6600

*N/A G80 Locking Differential.
 \$Reqs Z82 Trailing Special, N/A G80 Locking Differential.

G30/3500 SERIES

ENGINE	TRANSMISSION			AXLES			GVW
		AUTO		3.73	4.10		
W/YF5 CALIFORNIA EMISSION REQUIREMENTS							
LT9 V8 5.7 Liter (350-4BBL)(Reqs C6P)			MXO/1	GQ1	GT5		8600
LL4 Diesel 6.2 Liter V8 (379 Cu. In.) (Reqs C6P and B3J)			MXO/1	GQ1	GT5		8600

CHEVY VAN/VANDURA GVWR SELECTOR—ALL STATES

G10/1500 SERIES

GVW Rating (lbs)	†GAWR (lbs)		Minimum Equipment Required for GVW Rating		
			Tire Capacity (lbs ea)		Chassis Equipment
	Front	Rear	Front	Rear	
4900	2620	2400	1363	1363	Standard
5400	2726	2726	1363	1363	HD Front Springs (F60); HD Rear Springs (G50); Power Brakes (J50); Power Steering (N40)
5600	2906	2906	1453	1453	
6000	3166	3166	1583	1583	HD Front Springs (F60); HD Rear Springs (G50); HD Power Brakes (J55); Power Steering (N40)

†GAWR's shown are the maximum for each axle with equipment listed. Other GAWR's are available, and they are determined as the minimum capacity of either axle, springs or tires.

FRONT AND REAR TIRE AVAILABILITY CHART—ALL STATES

G10/1500 SERIES

Spare tire to match either front or rear tires must be ordered

Description	Capacity (lbs ea)	Highway		On-Off Road	Spare
		Front	Rear	Rear	
TUBELESS					
FR78-15B (Base) Fiberglass Belted Radial	1363	XKM	YKM	—	ZKM
P205/75R15 Fiberglass Belted Radial	#1453	XAY	YAY	*YJT	ZAY *ZJT
P205/75R15 Whitewall Fiberglass Belted Radial	#1453	XAZ	YAZ	—	ZAZ
P215/75R15 Steel Belted Radial	#1583	XKT	YKT	—	ZKT
P215/75R15 Whitewall Steel Belted Radial	#1583	XKU	YKU	—	ZKU
P215/75R15 White Letter Steel Belted Radial	#1583	XVM	YVM	—	ZVM

*Steel belted radial
#Requires Power Steering (N40).

ENGINE RATINGS

ALL STATES EXCEPT CALIFORNIA

SAE Net Ratings	*4.1 Liter 250 2-bbl L6	*5.0 Liter 305 4-bbl V8	**5.7 Liter 350 4-bbl V8
Net Horsepower	120 @ 4000 rpm	160 @ 4400 rpm	160 @ 3800 rpm
Net Torque, lb-ft	205 @ 2000 rpm	235 @ 2000 rpm	250 @ 2800 rpm

SAE Net Ratings	*6.2 Liter 379 V8 Diesel	**6.2 Liter 379 V8 Diesel
Net Horsepower	130 @ 3600 rpm	135 @ 3600 rpm
Net Torque, lb-ft	240 @ 2000 rpm	240 @ 2000 rpm

CALIFORNIA ONLY

SAE Net Ratings	*4.1 Liter 250 2-bbl L6	*5.0 Liter 305 4-bbl V8	**5.7 Liter 350 4-bbl V8
Net Horsepower	110 @ 3600 rpm	155 @ 4000 rpm	155 @ 4000 rpm
Net Torque, lb-ft	200 @ 1600 rpm	245 @ 1600 rpm	240 @ 2800 rpm

SAE Net Ratings	*6.2 Liter 379 V8 Diesel	**6.2 Liter 379 V8 Diesel
Net Horsepower	130 @ 3600 rpm	135 @ 3600 rpm
Net Torque, lb-ft	240 @ 2000 rpm	240 @ 2000 rpm

*Engine with Light or Medium Duty Emissions (w/GVWR up to 8500 lb.).
**Engine with Heavy Duty Emissions (w/GVWR over 8500 lb.).

CHEVY VAN/VANDURA GVWR SELECTOR—ALL STATES G20/2500 SERIES

GVWR Rating (lbs)	+GAWR (lbs)		Minimum Equipment Required for GVWR Rating		
	Front	Rear	Tire Capacity (lbs ea)		Chassis Equipment
			Front	Rear	
6600	3380	3380	1690	1690	Standard (w/o Diesel Engine)
	*3500	3400	1843	1843	Diesel Equipment Package (B3)

†GAWR's shown are the maximum for each axle with equipment listed. Other GAWR's are available, and they are determined as the minimum capacity of either axle, springs or tires.

*Front GAWR is 3670 on G21305 model.

FRONT AND REAR TIRE AVAILABILITY CHART—ALL STATES G20/2500 SERIES

Spare tire to match either front or rear tires is available at extra cost

Description	Capacity (lbs each)	Highway		Spare
		Front	Rear	
TUBELESS (With LE3, LE9 or LF3 Engine)				
P225/75R15 Steel Belted Radial	1690	XLX	YLX	ZLX
P225/75R15 Whitewall Steel Belted Radial	1690	XLZ	YLZ	ZLZ
P225/75R15 White Letter Steel Belted Radial	1690	XVN	YVN	ZVN
TUBELESS (With LH6 Engine)				
P235/75R15 Steel Belted Radial	1843	XBD	YBD	ZBD
P235/75R15 Whitewall Steel Belted Radial	1843	XBJ	YBJ	ZBJ
P235/75R15 White Letter Steel Belted Radial	1843	XWV	YWV	ZWV

GVWR SELECTOR—ALL STATES EXCEPT CALIFORNIA G30/3500 SERIES

GVWR Rating (lbs)	+GAWR (lbs)		Minimum Equipment Required for GVWR Rating		
	Front	Rear	Tire Capacity (lbs ea)		Chassis Equipment
			Front	Rear	
▲7100	3400	3980	1990	1990	Standard

▲Requires LE3 L6 engine.

GVWR SELECTOR—ALL STATES G30/3500/C6P SERIES

GVWR Rating (lbs)	+GAWR (lbs)		Minimum Equipment Required for GVWR Rating		
	Front	Rear	Tire Capacity (lbs ea)		Chassis Equipment
			Front	Rear	
8600	3900	5360	2680	2680	Standard

†GAWR's shown are the maximum for each axle with equipment listed. Other GAWR's are available, and they are determined as the minimum capacity of either axle, springs or tires.

FRONT AND REAR TIRE AVAILABILITY CHART—ALL STATES G30/3500 SERIES

Spare tire to match either front or rear tires is available at extra cost

Description	Capacity (lbs each)	Highway		Spare
		Front	Rear	
TUBELESS (With LE3 Engine)				
8.75R-16.5C Steel Belted Radial	1990	XWU	YWU	ZWU
TUBELESS (With LT9 or LL4 Engine)				
8.75-16.5E Nylon Bias Ply	2680	XTH	YTH	ZTH
8.75R-16.5E Steel Belted Radial	2680	XVD	YVD	ZVD

NOTES

CHEVY VAN/VANDURA

6.2 LITER DIESEL ENGINE

Equipment Included With 6.2L Diesel Engine:

- Low Coolant Sensor
- Poly-wrapped Paper Element Air Cleaner
- Engine Block Heater
- Fuel Tank with water detection and drain system
- Fuel Line Heater

B3J DIESEL EQUIPMENT PACKAGE

(Requires 6.2 Liter Diesel Engine)

Equipment Included With B3J Diesel Equipment Package:

- Hydraulic Power-assisted Brakes
- K81 66-amp Generator
- Engine Oil Cooler (located in radiator tank)
- Dual 550 Cold Cranking Amp/115 min. Reserve Capacity Batteries
- HD Radiator
- Dual Exhaust System
- Warning Lights: Glow Plugs, Water-in-fuel, and Low Coolant
- Diesel Engine Identification:
 - Fender nameplates
 - LH rear door nameplate
 - Diesel fuel label at fuel filler door

Additional Included Equipment:

G20/2500 Models

- 3500 lb. front suspension (G21005 Models)
- 3675 lb. front suspension (G21305 Models)
- 1750 lb. ea. capacity front springs (G21005 Models)
- 1835 lb. ea. capacity front springs (G21305 Models)

ADDITIONAL REQUIRED EQUIPMENT:

G20/2500 Models

- 4-Speed Manual or Automatic Transmission ♦

G30/3500 Models

- Automatic Transmission

♦ 4-Speed manual transmission available approximately January, 1983

CHEVY VAN/VANDURA (4900-lb - 8600-lb GVW)

1983 VEHICLES WITH STANDARD EQUIPMENT

Prices shown are effective with initial shipment of 1983 model motor vehicles

Description	Model Number	Body Code	Wheel Base	Factory D&H(a)	List Price	Mfr's Suggested Retail Price★	Group Number
◆ 6-Cylinder 4.1 Liter (250 Cu. In.) 2 BBL Engine-Engine Ordering Code LE3							
G10/G1500 Series							
Chevy Van/Vandura	CG/TG11005	ZW9	110"	11.10	7090.00	7101.10	21
Chevy Van/Vandura	CG/TG11305	ZW9	125"	11.10	7294.00	7305.10	21
G20/G2500 Series							
Chevy Van/Vandura	CG/TG21005	ZW9	110"	11.12	7703.00	7714.12	21
Chevy Van/Vandura	CG/TG21305	ZW9	125"	11.12	7907.00	7918.12	21
G30/G3500 Series							
Chevy Van/Vandura	CG/TG31305	ZW9	125"	16.44	8702.00	8718.44	21
◆ 8-Cylinder 5.7 Liter (350 Cu. In.) 4 BBL Engine-Engine Ordering Code LT9							
# H.D. Chevy Van/H. D. Vandura.	CG/TG31305	ZW9 & C6P	125"	16.28	9331.00	9347.28	21

★ Manufacturer's Suggested Retail Prices do not include applicable destination charges, state and local taxes, license fees, optional equipment or accessories or special items or services.

◆ Refer to Power Team Chart for California Emission Certification Requirements.

Factory D&H is not applicable and will not be reflected in the MSRP when B3D School Bus Chassis is specified.

Please Note: Anyone ordering a vehicle for completion or modification and use as a bus and/or school bus is solely responsible for assuring that such completed vehicle and associated equipment, which might be ordered for the vehicle, comply with all applicable Local, State and Federal Government requirements.

OPTIONS AND ACCESSORIES WHEN INSTALLED BY GENERAL MOTORS

Prices shown are effective with initial shipment of 1983 model motor vehicles

Description	Option Number	Factory D&H(a)	List Price	Mfr's Suggested Retail Price◇
Seat Trim: (See Interior and Exterior Color Selection Chart for Ordering Information).				
Standard Vinyl Bucket Seats			NO ADDITIONAL CHARGE	
Vinyl High Back Bucket Seats				
Without A57 Auxiliary Seat		N.A.	21.00	21.00
With A57 Auxiliary Seat		N.A.	41.00	41.00
Custom Vinyl High Back Bucket Seats				
Without A57 Auxiliary Seat		N.A.	30.00	30.00
With A57 Auxiliary Seat		N.A.	60.00	60.00
Paints, Exterior: (See Interior and Exterior Color Selection Chart for Ordering Information and Paint Application).				
Solid	ZY1		NO ADDITIONAL CHARGE	
Special Two-Tone. Includes B84 Black Body Side Moldings	ZY3	N.A.	223.00	223.00
Deluxe Two-Tone. Includes B84 Black Body Side Moldings	ZY4	N.A.	235.00	235.00
Emission Systems: Dealer Note - One of the following emission options must be specified. (See Power Teams Chart for availability and complete specifications). California Emission Requirements. Not available when NA6 High Altitude Emissions is specified. Includes all testing, equipment and/or certification necessary for registration in the State of California.				
With LE3 4.1 Liter or LF3 5.0 Liter Engine	YF5	N.A.	212.00	212.00
With LT9 5.7 Liter Engine	YF5	N.A.	150.00	150.00
With LH6 or LL4 6.2 Liter Diesel Engine	YF5	N.A.	215.00	215.00
High Altitude Emission Equipment. Available only when B3J Diesel Equipment Package is specified. Not Available when YF5 California Emissions is specified	NA6		NO ADDITIONAL CHARGE	
Standard Emission Equipment. Not available when YF5 California Emissions or NA6 High Altitude Emissions are specified	NA5		NO ADDITIONAL CHARGE	

(a) D & H Charges on vehicle and optional equipment include reimbursement to ordering Division for any tax that it has paid, incurred or agreed to pay thereon.
◇ State and local taxes not included.

CHEVY VAN/VANDURA

OPTIONS AND ACCESSORIES WHEN INSTALLED BY GENERAL MOTORS

Prices shown are effective with initial shipment of 1983 model motor vehicles

Description	Option Number	Factory D&H(a)	List Price	Mfr's Suggested Retail Price
Engines: (See Power Teams Chart for availability and complete specifications)				
4.1 Liter (250 Cu. In.) 2 BBL L6. Standard on G1-2-3 Series without C6P H.D. Chassis	LE3		NO ADDITIONAL CHARGE	
5.0 Liter (305 Cu. In.) 4 BBL V8 G1-2 Series only. Not available when YF5 California Emissions is specified.	LE9	N.A.	207.00	207.00
5.0 Liter (305 Cu. In.) 4 BBL V8. G1-2 Series only. Available only when MX0 Automatic Transmission and YF5 California Emissions are specified.	LF3	N.A.	207.00	207.00
5.7 Liter (350 Cu. In.) 4 BBL V8. Standard on G3 Series with C6P H.D. Chassis	LT9		NO ADDITIONAL CHARGE	
6.2 Liter (379 Cu. In.) L.D. V8 Diesel. G2 Series only. Available only when B3J Diesel Equipment Package is specified.	LH6	N.A.	1334.00	1334.00
6.2 Liter (379 Cu. In.) H.D. V8 Diesel. G3 Series only. Available only when B3J Diesel Equipment Package and C6P H.D. Chassis is specified.	LL4	N.A.	1334.00	1334.00
Transmissions:				
4-Speed Automatic with Overdrive.				
G1-2 Series and G3 Series without C6P H.D. Chassis.	MX0	N.A.	650.00	650.00
G3 Series with C6P H.D. Chassis.	MX0	N.A.	186.00	186.00
3-Speed Automatic. Standard on G3 Series with C6P H.D. Chassis.	MX1		NO ADDITIONAL CHARGE	
3-Speed Manual. Standard on G1-2 and G3 Series without C6P H.D. Chassis.	MM3		NO ADDITIONAL CHARGE	
4-Speed Manual with Overdrive. G1-2 Series only.	MM7	N.A.	283.00	283.00
Axles, Rear: (See Power Teams Chart for option number selection, availability and complete specifications)				
Optional Ratio	...	N.A.	36.00	36.00
Locking Differential	G80	N.A.	230.00	230.00
Tires: (See Tire Charts for Tire availability)				
All rim sizes are 6.00" on G1-2 Series except when N67 Wheels are specified.				
All rim sizes are 6.75" on G3 Series.				
TUBELESS				
FR78-15/B Highway Fiberglass Belted Radial Ply Blackwall (Maximum Capacity 1363-lbs)				
Front (Standard)	XKM		NO ADDITIONAL CHARGE	
Rear (Standard)	YKM		NO ADDITIONAL CHARGE	
Spare (Standard)	ZKM		NO ADDITIONAL CHARGE	
P205/75R-15 Highway Fiberglass Belted Radial Ply Blackwall. (Maximum Capacity 1453-lbs). Available only when N40 Power Steering is specified.				
Front	XAY	.32	22.00	22.32
Rear	YAY	.32	22.00	22.32
Spare	ZAY	.16	11.00	11.16
P205/75R15 Highway Fiberglass Belted Radial Ply Whitewall. (Maximum Capacity 1453-lbs). Available only when N40 Power Steering is specified.				
Front	XAZ	.32	48.00	48.32
Rear	YAZ	.32	48.00	48.32
Spare	ZAZ	.16	24.00	24.16
P205/75R15 On-Off Road Steel Belted Radial Ply Blackwall. (Maximum Capacity 1453-lbs). Available only when N40 Power Steering is specified.				
Rear	YJT	.66	76.00	76.66
Spare	ZJT	.33	38.00	38.33
P215/75R15 Highway Steel Belted Radial Ply Blackwall. (Maximum Capacity 1583-lbs). Available only when N40 Power Steering is specified.				
Front	XKT	.74	80.00	80.74
Rear	YKT	.74	80.00	80.74
Spare	ZKT	.37	40.00	40.37
P215/75R15 Highway Steel Belted Radial Ply Whitewall. (Maximum Capacity 1583-lbs). Available only when N40 Power Steering is specified.				
Front	XKU	.74	108.00	108.74
Rear	YKU	.74	108.00	108.74
Spare	ZKU	.37	54.00	54.37
P215/75R15 Highway Steel Belted Radial Ply White Lettered. (Maximum Capacity 1583-lbs). Available only when N40 Power Steering is specified.				
Front	XVM	.74	120.00	120.74
Rear	YVM	.74	120.00	120.74
Spare	ZVM	.37	60.00	60.37

(a) D & H Charges on vehicle and optional equipment include reimbursement to ordering Division for any tax that it has paid, incurred or agreed to pay thereon.
 ◇ State and local taxes not included.

CHEVY VAN/VANDURA

OPTIONS AND ACCESSORIES WHEN INSTALLED BY GENERAL MOTORS

Prices shown are effective with initial shipment of 1983 model motor vehicles

Description	Option Number	Factory D&H(a)	List Price	Mfr's Suggested Retail Price ◊
Tires: (Continued)				
<i>P225/75R15 Highway Steel Belted Radial Ply Blackwall</i>				
(Maximum Capacity 1690-lbs). Not available when LH6 6.2 Liter Diesel Engine is specified.				
Front (Standard)	XLX		NO ADDITIONAL CHARGE	
Rear (Standard)	YLX		NO ADDITIONAL CHARGE	
Spare	ZLX	2.78	130.00	132.78
<i>P225/75R15 Highway Steel Belted Radial Ply Whitewall</i>				
(Maximum Capacity 1690-lbs) Not available when LH6 6.2 Liter Diesel Engine is specified.				
Front	XLZ	N.C.	34.00	34.00
Rear	YLZ	N.C.	34.00	34.00
Spare	ZLZ	2.78	147.00	149.78
<i>P225/75R15 Highway Steel Belted Radial Ply White Lettered</i>				
(Maximum Capacity 1690-lbs). Not available when LH6 6.2 Liter Diesel Engine is specified.				
Front	XVN	N.C.	46.00	46.00
Rear	YVN	N.C.	46.00	46.00
Spare	ZVN	2.78	153.00	155.78
<i>P235/75R15 Highway Steel Belted Radial Ply Blackwall</i>				
(Maximum Capacity 1843-lbs) Available only when LH6 6.2 Liter Diesel Engine is specified				
Front	XBD	.46	26.00	26.46
Rear	YBD	.46	26.00	26.46
Spare	ZBD	3.01	143.00	146.01
<i>P235/75R15 Highway Steel Belted Radial Ply Whitewall</i>				
(Maximum Capacity 1843-lbs). Available only when LH6 6.2 Liter Diesel Engine is specified.				
Front	XBJ	.46	60.00	60.46
Rear	YBJ	.46	60.00	60.46
Spare	ZBJ	3.01	160.00	163.01
<i>P235/75R15 Highway Steel Belted Radial Ply White Lettered</i>				
(Maximum Capacity 1843-lbs). Available only when LH6 6.2 Liter Diesel Engine is specified				
Front	XWV	.46	72.00	72.46
Rear	YWV	.46	72.00	72.46
Spare	ZWV	3.01	166.00	169.01
<i>8.75-16.5/E Highway Nylon Blackwall</i>				
(Maximum Capacity 2680-lbs) Available only when C6P H.D. Chassis is specified.				
Front (Standard)	XTH		NO ADDITIONAL CHARGE	
Rear (Standard)	YTH		NO ADDITIONAL CHARGE	
Spare				
Without B3D School Bus Chassis Equipment	ZTH	4.07	181.00	185.07
With B3D School Bus Chassis Equipment	ZTH	N.C.	181.00	181.00
<i>8.75R-16.5/C Highway Steel Belted Radial Ply Blackwall</i>				
(Maximum Capacity 1990-lbs). Available only when LE3 4.1 Liter Engine is specified.				
Front	XWU		NO ADDITIONAL CHARGE	
Rear	YWU		NO ADDITIONAL CHARGE	
Spare	ZWU	4.11	219.00	223.11
<i>8.75R-16.5/E Highway Steel Belted Radial Ply Blackwall</i>				
(Maximum Capacity 2680-lbs). Available only when C6P H.D. Chassis is specified.				
Front				
Without B3D School Bus Chassis Equipment	XVD	.94	144.00	144.94
With B3D School Bus Chassis Equipment	XVD	N.C.	144.00	144.00
Rear				
Without B3D School Bus Chassis Equipment	YVD	.94	144.00	144.94
With B3D School Bus Chassis Equipment	YVD	N.C.	144.00	144.00
Spare				
Without B3D School Bus Chassis Equipment	ZVD	4.54	253.00	257.54
With B3D School Bus Chassis Equipment	ZVD	N.C.	253.00	253.00

(a) D & H Charges on vehicle and optional equipment include reimbursement to ordering Division for any tax that it has paid, incurred or agreed to pay thereon.
 ◊ State and local taxes not included.

CHEVY VAN/VANDURA

OPTIONS AND ACCESSORIES WHEN INSTALLED BY GENERAL MOTORS

Prices shown are effective with initial shipment of 1983 model motor vehicles

Description	Option Number	Factory D&H(a)	List Price	Mfr's Suggested Retail Price
OTHER OPTIONS				
Air Conditioning: All-Weather. Includes extra cooling.				
<i>Front.</i> Instrument panel mounted. Recommended for front seat area cooling only.				
Without B3J Diesel Equipment Package. Includes K81 66-Amp Generator	C60	N.A.	840.00	840.00
With B3J Diesel Equipment Package.	C60	N.A.	780.00	780.00
<i>Front and Rear.</i> Front instrument panel mounted and rear overhead systems.				
Available only when V8 Engine is specified.				
Without B3J Diesel Equipment Package. Includes K81 66-Amp Generator	C69	N.A.	1370.00	1370.00
With B3J Diesel Equipment Package.	C69	N.A.	1310.00	1310.00
Appearance, Deluxe Front: Includes dark argent grille with bright trim.				
Without Diesel Engine. Also includes dual rectangular headlamps	V22	N.A.	114.00	114.00
With Diesel Engine.	V22	N.A.	74.00	74.00
Battery: Heavy-Duty. 515 Cold Cranking Amps, Delco Freedom. Not available when B3J Diesel Equipment Package is specified. Included when Z82 Heavy-Duty Trailering Special is specified.				
	UA1	N.A.	48.00	48.00
Brakes:				
<i>Power.</i> G1 Series only	J50	N.A.	92.00	92.00
<i>Heavy-Duty Power.</i> Standard on G2-3 Series.	J55	N.A.	168.00	168.00
Bumper Equipment:				
<i>Bumpers, Front and Rear. Chromed.</i>	V37	N.A.	70.00	70.00
<i>Guards, Front Bumper. Chromed.</i> 125" wheelbase only. Available only when V37 Front and Rear Bumpers are specified.	V31	N.A.	40.00	40.00
Clock: Quartz Electric	U35	N.A.	38.00	38.00
Coolers: Available only when V8 Engine and MX0 or MX1 Automatic Transmission are specified. Not available when B3J Diesel Equipment Package is specified. Included when Z82 Heavy-Duty Trailering Special is specified.				
<i>Engine Oil.</i> G2-3 Series only.	KC4	N.A.	116.00	116.00
<i>Transmission Oil. Heavy-Duty.</i>				
G1-2 Series only. Available only when C60 Front or C69 Front and Rear Air Conditioning or V05 Heavy-Duty Cooling is specified.	V02	N.A.	57.00	57.00
G3 Series only. Available only when C6P H.D. Chassis is specified.	V02	N.A.	57.00	57.00
Cooling: Heavy-Duty. Not available when B3J Diesel Equipment Package, C60 Front or C69 Front and Rear Air Conditioning is specified				
	V05	N.A.	51.00	51.00
Cover, Spare Tire: Black Vinyl on G1 Series and Color-Keyed Vinyl on G2-3 Series				
	P17	N.A.	31.00	31.00
Diesel Equipment Package: Available only when LH6 or LL4 6.2 Liter Engine is specified. Includes K81 66-Amp Generator, engine oil cooler, two H.D. batteries, dual exhaust, special instrument cluster with glow plug, water-in fuel indicator, diesel nameplates and added insulation.				
	B3J	N.A.	970.00	970.00
Door Lock System, Power: All Doors. Included when ZQ2 Operating Convenience Package is specified.				
	AU3	N.A.	185.00	185.00
Engine Block Heater: Not available when B3J Diesel Equipment Package is specified				
	K05	N.A.	31.00	31.00
Extender Link, Side Rear Door				
	AW4	N.A.	34.00	34.00
Floor Covering: Carpeting, Wheelhousing and Floor. Front area only. Includes stepwell mats. Available only when A57 Auxiliary Seat is specified. Not available when black trim is specified				
	B30	N.A.	110.00	110.00
Gages: Voltmeter, Temperature and Oil Pressure				
	Z53	N.A.	38.00	38.00
Generator: 66-Amp Delcotron. Included when C60 Front or C69 Front and Rear Air Conditioning, B3J Diesel Equipment Package or C36 Rear Heater is specified.				
	K81	N.A.	60.00	60.00

(a) D & H Charges on vehicle and optional equipment include reimbursement to ordering Division for any tax that it has paid, incurred or agreed to pay thereon.
 ◇ State and local taxes not included.

CHEVY VAN/VANDURA

OPTIONS AND ACCESSORIES WHEN INSTALLED BY GENERAL MOTORS

Prices shown are effective with initial shipment of 1983 model motor vehicles

Description	Option Number	Factory D&H(a)	List Price	Mfr's Suggested Retail Price ◇
OTHER OPTIONS				
Glass:				
<i>Tinted, All Windows. Includes A02 Glass.</i>				
With A07 Body Glass	A01	N.A.	90.00	90.00
Without A07 Body Glass				
With A08 RH Side Body Glass				
With A17 Swing-Out Left Side Glass and A19 Swing-Out Sliding Side Door Glass and A12 Rear Door Glass or A18 Swing-Out Rear Door Glass	A01	N.A.	72.00	72.00
With A17 Swing-Out Left Side Glass and A19 Swing-Out Sliding Side Door Glass without A12 Rear Door Glass or A18 Swing-Out Rear Door Glass	A01	N.A.	64.00	64.00
With A12 Rear Door Glass or A18 Swing-Out Rear Door Glass without A17 Swing-Out Left Side Glass or A19 Swing-Out Sliding Side Door Glass	A01	N.A.	64.00	64.00
Without A17 Swing-Out Left Side Glass or A19 Swing-Out Sliding Side Door Glass or A12 Rear Door Glass or A18 Swing-Out Rear Door Glass	A01	N.A.	56.00	56.00
Without A08 RH Side Body Glass				
With A17 Swing-Out Left Side Glass and A19 Swing-Out Sliding Side Door Glass and A12 Rear Door Glass or A18 Swing-Out Rear Door Glass	A01	N.A.	64.00	64.00
With A17 Swing-Out Left Side Glass and A19 Swing-Out Sliding Side Door Glass without A12 Rear Door Glass or A18 Swing-Out Rear Door Glass	A01	N.A.	56.00	56.00
With A13 Side Door Glass or A19 Swing-Out Sliding Side Door Glass and A12 Rear Door Glass or A18 Swing-Out Rear Door Glass	A01	N.A.	56.00	56.00
With A12 Rear Door Glass or A18 Swing-Out Rear Door Glass without A17 Swing-Out Left Side Glass or A19 Swing-Out Sliding Side Door Glass	A01	N.A.	47.00	47.00
With A13 Side Door Glass or A19 Swing-Out Sliding Side Door Glass	A01	N.A.	47.00	47.00
With A12 Rear Door Glass or A18 Swing-Out Rear Door Glass without A13 Side Door Glass or A19 Swing-Out Sliding Side Door Glass	A01	N.A.	47.00	47.00
Without A12 Rear Door Glass or A13 Side Door Glass or A17 Swing-Out Left Side Glass or A18 Swing-Out Rear Door Glass or A19 Swing-Out Sliding Side Door Glass	A01	N.A.	39.00	39.00
<i>Tinted Windshield only. Included when A01 Tinted Glass, AA3 Deep Tinted Glass or AJ1 Deep Tinted Glass is specified.</i>	A02	N.A.	31.00	31.00
<i>Deep Tinted. Available only when other body glass or door glass is specified. Not available when A01 Tinted Glass is specified. Includes tinted glass on passenger and driver's side door. Also includes A02 Windshield Glass and dark laminated glass on side windows and rear door.</i>				
With A07 Body Glass	AJ1	N.A.	357.00	357.00
Without A07 Body Glass				
With A08 RH Side Body Glass, A17 Swing-Out Left Side Glass, A19 Swing-Out Sliding Side Door Glass and A12 Rear Door Glass or A18 Swing-Out Rear Door Glass	AJ1	N.A.	306.00	306.00
With A08 RH Side Body Glass, A17 Swing-Out Left Side Glass and A19 Swing-Out Sliding Side Door Glass	AJ1	N.A.	205.00	205.00
With A17 Swing-Out Left Side Glass, A19 Swing-Out Sliding Side Door Glass and A12 Rear Door Glass or A18 Swing-Out Rear Door Glass	AJ1	N.A.	205.00	205.00
With A08 RH Side Body Glass and A12 Rear Door Glass or A18 Swing-Out Rear Door Glass	AJ1	N.A.	205.00	205.00
With A08 RH Side Body Glass	AJ1	N.A.	154.00	154.00
Without A08 RH Side Body Glass				
With A12 Rear Door Glass or A18 Swing-Out Rear Door Glass and A13 Side Door Glass or A19 Swing-Out Sliding Side Door Glass	AJ1	N.A.	154.00	154.00
With A17 Swing-Out Left Side Glass and A19 Swing-Out Sliding Side Door Glass	AJ1	N.A.	154.00	154.00
With A13 Side Door Glass or A19 Swing-Out Sliding Side Door Glass	AJ1	N.A.	105.00	105.00
With A12 Rear Door Glass or A18 Swing-Out Rear Door Glass	AJ1	N.A.	105.00	105.00
<i>Deep Tinted with Light Tinted Rear Window. Available only when A07 Body Glass is specified. Includes tinted glass on passenger, driver's side and rear door. Also includes A02 Tinted Windshield and dark laminated glass on side windows.</i>	AA3	N.A.	297.00	297.00
<i>Swing-Out Rear Door.</i>				
Without A07 Body Glass	A18	N.A.	99.00	99.00
With A07 Body Glass	A18	N.A.	53.00	53.00
<i>Body, 6 Windows. Includes A12 Rear Door Glass without A18 Swing-Out Rear Door Glass or A08 RH Side Body Glass</i>	A07	N.A.	188.00	188.00
<i>RH Side Body, 2 Windows. Included when A07 Body Glass is specified. Includes A13 Side Door Glass</i>	A08	N.A.	75.00	75.00
<i>Rear Door, Fixed. Not available when A18 Swing-Out Rear Door is specified. Included when A07 Body Glass is specified. Includes interior rearview mirror</i>	A12	N.A.	46.00	46.00

(a) D & H Charges on vehicle and optional equipment include reimbursement to ordering Division for any tax that it has paid, incurred or agreed to pay thereon.

◇ State and local taxes not included.

CHEVY VAN/VANDURA

OPTIONS AND ACCESSORIES WHEN INSTALLED BY GENERAL MOTORS

Prices shown are effective with initial shipment of 1983 model motor vehicles

Description	Option Number	Factory D&H(a)	List Price	Mfr's Suggested Retail Price ◊
OTHER OPTIONS				
Glass: (Continued)				
<i>Side Door, Fixed.</i> Included when A08 RH Side Body Glass or A07 Body Glass is specified	A13	N.A.	35.00	35.00
<i>Swing-Out LH Side Body.</i> Available only when A19 Swing-Out Sliding Side Door Glass is specified.				
Without A07 Body Glass	A17	N.A.	107.00	107.00
With A07 Body Glass	A17	N.A.	72.00	72.00
<i>Swing-Out Sliding Side Door.</i> Not available when A13 Side Door Glass is specified.				
Without A07 Body Glass or A08 RH Side Body Glass	A19	N.A.	107.00	107.00
With A07 Body Glass or A08 RH Side Body Glass	A19	N.A.	72.00	72.00
Headlamps:				
<i>Halogen.</i> Not available with V22 Front Appearance unless B3J Diesel Equipment Package is specified.	TT4	N.A.	21.00	21.00
<i>Halogen Hi-Beam.</i> Available only when V22 Deluxe Appearance is specified. Not available when B3J Diesel Equipment is specified.	TT5	N.A.	16.00	16.00
Heater, Rear:				
Without C60 Front or C69 Front and Rear Air Conditioning or B3J Diesel Equipment Package. Includes K81 66-Amp Generator	C36	N.A.	248.00	248.00
With C60 Front or C69 Front and Rear Air Conditioning or B3J Diesel Equipment Package.	C36	N.A.	188.00	188.00
Key Unit: Separate keys for side and rear cargo doors.	AU2	N.A.	8.00	8.00
Lighter, Cigarette	U37	N.A.	29.00	29.00
Lighting, Auxiliary: Includes instrument panel ashtray light, front compartment combination dome-reading light, lights for RH and LH front stepwell plus light for sliding door stepwell and headlamp warning buzzer	TR9	N.A.	95.00	95.00
Mirrors, Exterior: LH and RH. Below-Eye-Line Type. 9" x 6.5".				
Painted	D44	N.A.	47.00	47.00
Stainless Steel	D45	N.A.	76.00	76.00
Moldings:				
<i>Body Side Black.</i> Included when ZY3 or ZY4 paint is specified. Includes bright body front, side and rear moldings	B84	N.A.	122.00	122.00
<i>Wheel Opening.</i>	B96	N.A.	68.00	68.00
Operating Convenience Package: Includes AU3 Power Door Locks and A31 Power Windows	ZQ2	N.A.	360.00	360.00
Preliminary Price Information	B3W	N.A.	N.A.	N.A.
Radio Equipment:				
<i>AM Radio.</i> Includes dual front speakers.	U63	N.A.	112.00	112.00
<i>AM/FM Radio.</i> Includes dual front speakers	U69	N.A.	171.00	171.00
<i>AM/FM Stereo Radio.</i> Includes dual front speakers and wiring for rear speakers	U58	N.A.	178.00	178.00
<i>AM/FM Stereo Radio with Stereo Cassette Tape.</i> Includes dual front speakers and wiring for rear speakers	UN3	N.A.	278.00	278.00
School Bus Equipment: G3 Series only. Available only when C6P H.D. Chassis is specified. Not available when VR2 or VR4 Hitch, Z72 or Z82 Trailing Equipment is specified.	B3D	N.A.	20.00	20.00
Seat: Front Auxiliary. Stationary Type. Includes RH armrest, D20 Passenger Sunshade, seat belt, seat adjuster and floor mat. (Added weight includes passenger weight allowance of 150-lbs per seating position).	A57	N.A.	168.00	168.00
Shock Absorbers: Heavy-Duty, Front and Rear	F51	N.A.	32.00	32.00
Speed Control, Electronic: G1 Series available only when J50 Power Brakes or J55 H.D. Power Brakes are specified	K34	N.A.	185.00	185.00
Springs: Heavy-Duty. Standard on G3 Series when C6P H.D. Chassis is specified.				
Front. Capacity 1700-lb each. G1 Series only	F60	N.A.	14.00	14.00
Rear.				
Capacity 1700-lb each. G1 Series only	G50	N.A.	55.00	55.00
Capacity 2100-lb each. G2 Series only	G50	N.A.	32.00	32.00
Stabilizer Bar: Front. Standard on G3 Series when C6P H.D. Chassis is specified. Included when Z82 Heavy-Duty Trailing Special is specified	F59	N.A.	35.00	35.00
Steering:				
Power. Standard on G2-3 Series	N40	N.A.	262.00	262.00
Power, Not Desired. G1 Series only. Not available when Z72 Light-Duty Trailing Special is specified.	N51	NO ADDITIONAL CHARGE		

(a) D & H Charges on vehicle and optional equipment include reimbursement to ordering Division for any tax that it has paid, incurred or agreed to pay thereon.
 ◊ State and local taxes not included.

CHEVY VAN/VANDURA

OPTIONS AND ACCESSORIES WHEN INSTALLED BY GENERAL MOTORS

Prices shown are effective with initial shipment of 1983 model motor vehicles

Description	Option Number	Factory D&H(a)	List Price	Mfr's Suggested Retail Price ◊
OTHER OPTIONS				
Steering Wheels:				
<i>Comfortilt</i>	N33	N.A.	105.00	105.00
<i>Custom</i>	N31	N.A.	25.00	25.00
Stop, Positive: Rear Door	AD8	N.A.	34.00	34.00
Sunshade, Passenger: Included when A57 Auxiliary Seat is specified ...	D20	N.A.	18.00	18.00
Tank, Fuel: 125" wheelbase only. Approximately 33-gallon capacity. Replaces production tank	NL7	N.A.	83.00	83.00
Trailer Hitch:				
<i>Deadweight Type.</i> Not available when Z82 H.D. Trailering Special is specified. Included when Z72 Light-Duty Trailering Special is specified.....	VR2	N.A.	62.00	62.00
<i>Weight Distributing Platform Type.</i> Included when Z82 H.D. Trailering Special is specified	VR4	N.A.	172.00	172.00
Trailering Special Equipment:				
<i>Heavy-Duty.</i> G2-3 Series only. Available only when MX0 or MX1 Automatic Transmission is specified. Includes VR4 Weight Distributing Hitch Platform and H.D. 7 Lead Wiring Harness.				
G2 Series. Available only when F51 H.D. Shock Absorbers, 3.73 rear axle ratio, LE9 5.0 Liter or LH6 6.2 Liter Engine is specified. Also available only when V05 Heavy-Duty Cooling and K81 66-Amp Generator are specified unless C60 Front or C69 Front and Rear Air Conditioning or B3J Diesel Equipment Package is specified. Also includes F59 Stabilizer Bar				
Without B3J Diesel Equipment Package. Also includes KC4 Engine Oil Cooler, UA1 H.D. Battery and V02 Transmission Oil Cooler	Z82	N.A.	542.00	542.00
With B3J Diesel Equipment Package	Z82	N.A.	321.00	321.00
G3 Series. Available when LT9 5.7 Liter or LL4 6.2 Liter Engine is specified. Also available only when K81 66-Amp Generator is specified unless C60 Front or C69 Front and Rear Air Conditioning or B3J Diesel Equipment Package is specified.				
Without B3J Diesel Equipment Package. Also includes KC4 Engine Oil Cooler, UA1 H.D. Battery and V02 Transmission Oil Cooler	Z82	N.A.	507.00	507.00
With B3J Diesel Equipment Package	Z82	N.A.	286.00	286.00
<i>Light-Duty.</i> Available only when C60 Front or C69 Front and Rear Air Conditioning, B3J Diesel Equipment Package, V05 H.D. Cooling and MX0 or MX1 Transmission are specified. G1 Series available only when N40 Power Steering, F59 Stabilizer and J50 or J55 Brakes are specified. G2 Series available only when F59 Stabilizer is specified. G3 Series available only when LT9 5.7 Liter or LL4 6.2 Liter Engine is specified. Includes VR2 Deadweight Trailer Hitch and 5 lead wiring harness				
Ventilator, Roof: Crank Type	Z72	N.A.	121.00	121.00
Wheels: Rally. G1-2 Series only. Includes 15" x 6.50" wheels, trim rings and special hub caps.	C55	N.A.	73.00	73.00
Windows: Power. Front side doors only. Included when ZQ2 Operating Convenience Package is specified.	N67	N.A.	109.00	109.00
Windshield Wiper System: Intermittent.	A31	N.A.	175.00	175.00
	CD4	N.A.	49.00	49.00

(a) D & H Charges on vehicle and optional equipment include reimbursement to ordering Division for any tax that it has paid, incurred or agreed to pay thereon.
 ◊ State and local taxes not included.

NOTES

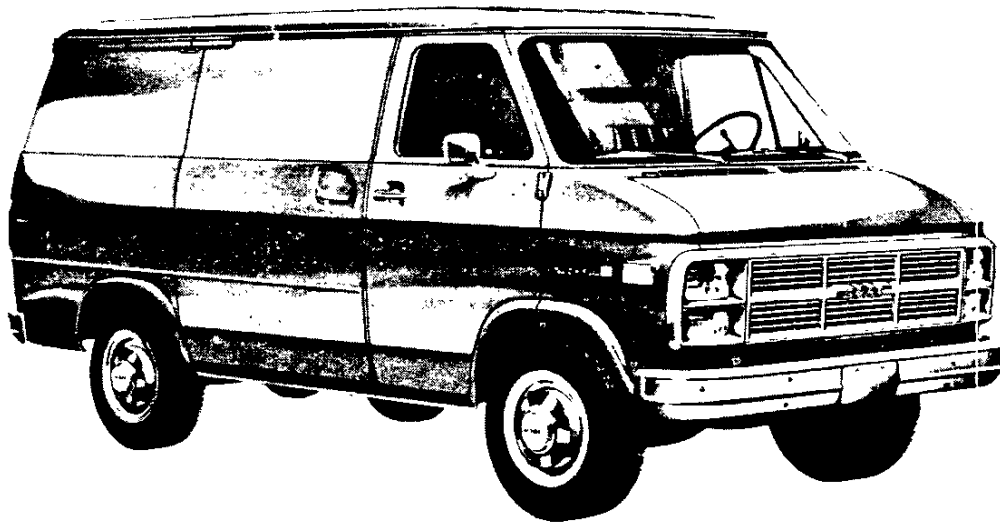
CHEVY VAN/VANDURA

**CAB & BODY FEATURES
BODY CONSTRUCTION
SEATING ARRANGEMENTS
COLOR & TRIM CHARTS
TWO-TONES**

CHEVY VAN/VANDURA

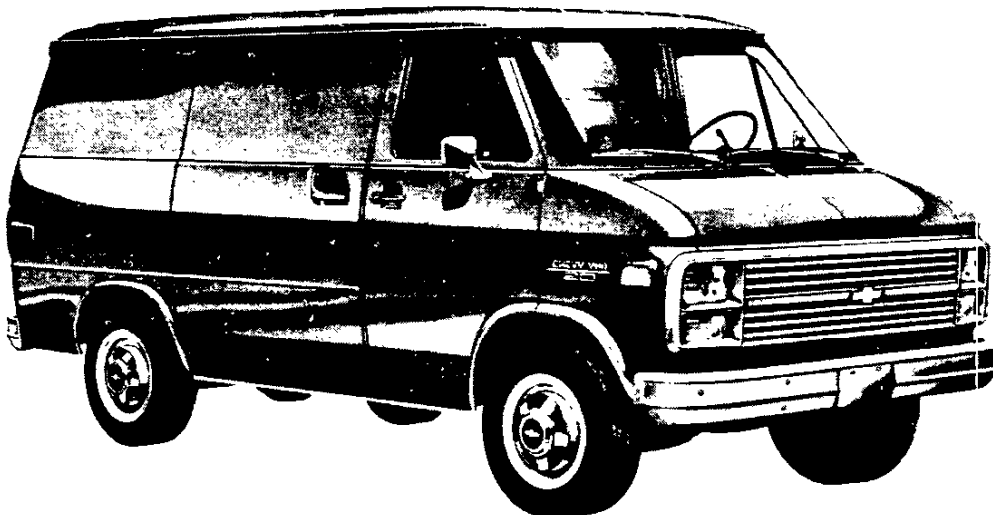
STANDARD MODEL—BODY ORDERING CODE—ZW9

The standard model includes the following items as standard equipment



EXTERIOR

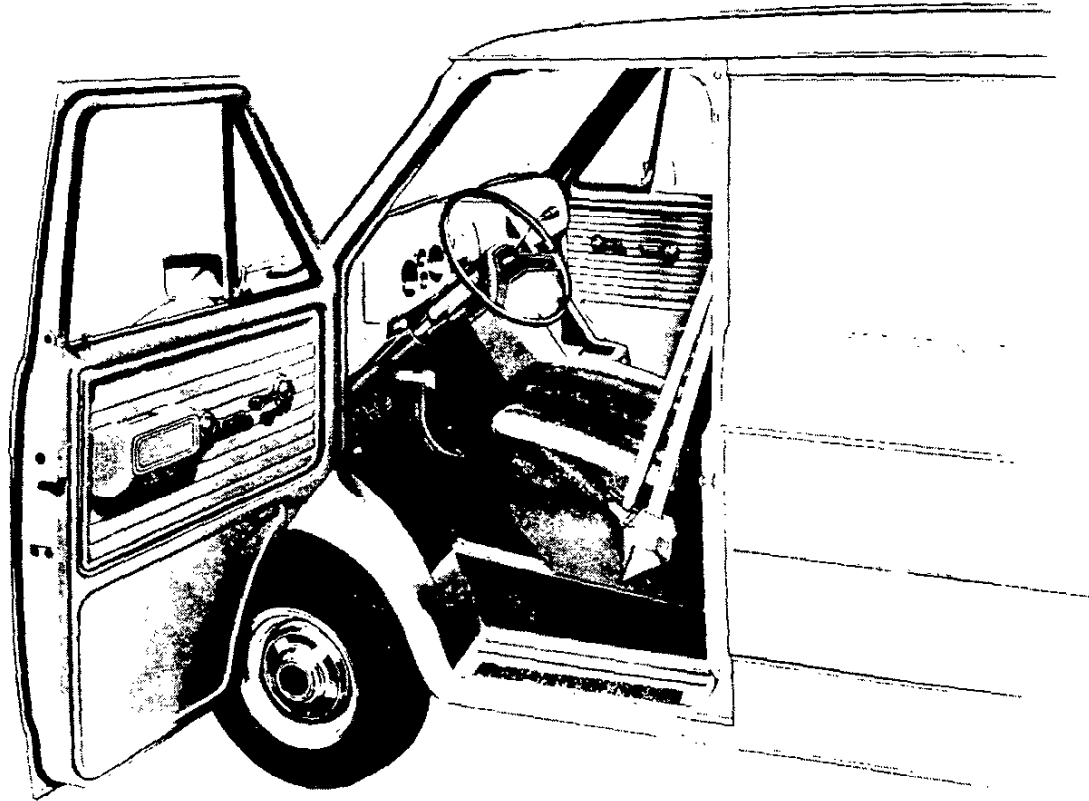
- **Bumpers:** Front and rear; painted silver
- **Colors:** See Interior and Exterior Color Selection Chart
- **Doors:** RH and LH front side doors; RH sliding side load door; RH and LH rear load doors
- **Door Opening and Locking Methods:**
 - Front side doors: Outside pushbutton latch release in door handle with separate key lock; keyless outside locking
 - Sliding side load door: Turning outside handle counterclockwise releases both front and rear latches; to close door, reverse procedure; for opening and closing of door from inside, reverse outside procedure; door is locked from outside through a separate key lock
 - RH and LH rear doors: Pushbutton latch release in RH door handle opens door, and after opening RH door, LH door latch is released by lower inside lift handle; separate key lock cylinder in RH door
- **Glass:** Windshield; RH and LH front side door drop glass and pivoting ventipanes
- **Grille:** Molded plastic; painted light argent; integral Chevrolet emblem/GMC letters at center
- **Grille Frame:** Headlamp/parking lamp bezels plus upper and lower moldings joining extensions of lamp bezels; painted light argent
- **Horn:** Single, electric low-note
- **Hub Caps:** Bright metal with black trim
- **Keys:** Two-key system with separate keys for ignition switch and doors and tailgate
- **Lights:**
 - Backup lamps: Two rear (integral with taillamps)
 - Combination parking/direction/hazard: Two front
 - Combination tail/stop/direction/hazard: Two rear
 - Headlamps: Two; Rectangular
 - License plate lamp: Single rear
 - Side marker lamps with reflectors: Two front and two rear
- **Mirrors:** RH and LH chrome; fixed arm with adjustable 6" wide x 4⁷/₁₆" high head
- **Nameplates:** Bright "Chevy Van/Vandura/Series" plate on front fenders; bright "Chevrolet/GMC letters" plate on LH rear door
- **Tools:** Mechanical jack and wheel wrench
- **Undercoating:** On body rocker panels, step panels, wheel-housings
- **Wheels:** Painted white
- **Windshield Wipers and Washers:** Electric, 2-speed wipers with matte finish on exposed metal portions; wet-arm design demand-type washer system



CHEVY VAN/VANDURA

STANDARD MODEL—BODY ORDERING CODE—ZW9

The standard model includes the following items as standard equipment

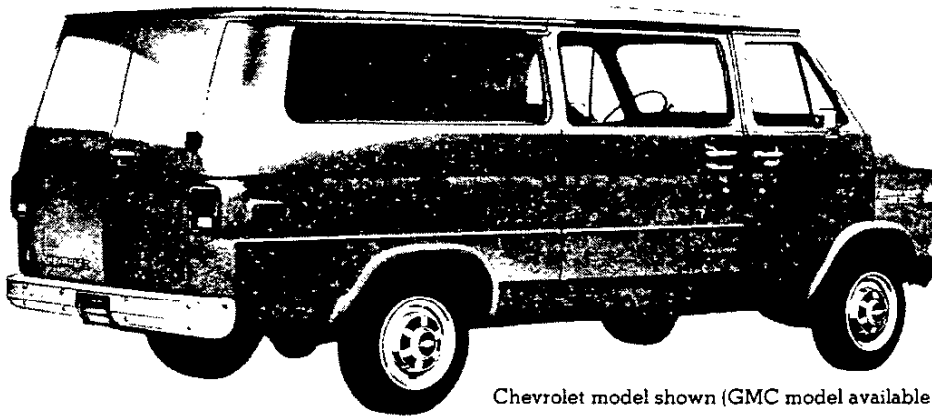


INTERIOR

- **Air Vents:** RH and LH; individually controlled
- **Armrest:** LH side door; padded
- **Ashtray:** At top of instrument panel extension; with door
- **Coat Hooks:** On LH side panel to rear of driver's seat
- **Colors:**
 - Painted areas: Same as exterior primary color choice
 - Interior trim: Coordinated with seat trim color choice
- **Dome Lamps:** Two; with door-actuated switches (dome lamps may also be activated by main light switch)
- **Door Locks:** Inside pushbutton lock/release for front doors; rotating locking knob for sliding side door
- **Door Seals:** Latex foam rubber
- **Floor Covering:** Embossed black rubber mats, LH front floor area and wheelhousing
- **Headliner:** Mystic-colored perforated hardboard; driver area
- **Heater and Defogger:** Deluxe-air
- **Hood Lock Release:** Handle located on LH side of instrument panel
- **Instruments:**
 - Gages: Speedometer, odometer, and fuel
 - Switches: Main, for control of exterior lights, instrument lights and dome lights; multi-function switch on steering column for direction signals by moving lever up or down (includes lane change position), headlight beams by pulling lever toward driver, windshield wiper by turning band marked "WIPER" toward or away from driver, and windshield washer by pushing in the lever knob; ignition; hazard warning; heater fan; door-operated dome lamp
- **Warning lights:** Generator, oil pressure, engine temperature, service-parking brake, direction/hazard signal, and high beam
- **Instrument Panel:** Bright trim on gauge bezels; black applique with bright trim on area below instrument cluster
- **Insulation and Sound Deadening Material:** Dash (fire-wall), LH front floor panel, engine cover extension and inside engine cover
- **Lights:** Instruments, front and rear dome
- **Main Light Switch Control Knob:** Bright, with brushed finish and black graphic identification
- **Parcel Tray:** On top surface of instrument panel extension; includes beverage holder provisions
- **Safety Step Pads:** Front and sliding side door step panels
- **Seat:** Front, bucket driver; adjustable; all-vinyl trim; foam padded. See Interior and Exterior Color Selection Chart for color and trim availability
- **Seat Belt:** Color-keyed with pushbutton release and outboard retractor
- **Spare Tire Carrier:** RH rear side
- **Steering Wheel and Column:** 15.25" diameter black soft vinyl wheel with 2 spokes; black energy-absorbing steering column with anti-theft locking feature
- **Storage Box:** In front face of instrument panel extension; with door
- **Sunshade:** LH padded, color-keyed
- **Trim Panels:** Painted metal with decorative embossments; front side doors and sliding side door

CHEVY VAN/VANDURA

BODY GLASS COMBINATIONS



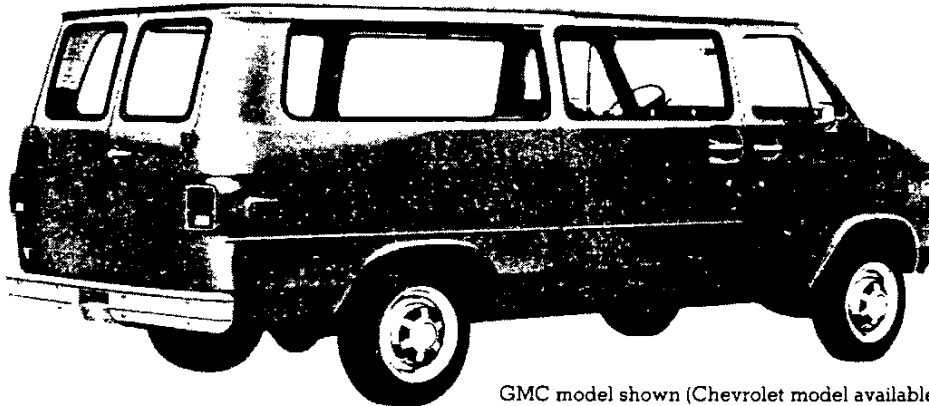
Chevrolet model shown (GMC model available)

2-WINDOW RH BODYSIDE GLASS (RPO A08)

Two-window glass for RH side of vehicle only. Windows with fixed glass provided in RH rear-quarter panel and in sliding cargo door. Included in 6-Window Body Glass (RPO A07).

FIXED SIDE DOOR GLASS (RPO A13)

A single large fixed glass in the RH sliding cargo door. Included with 2-Window Body Glass (RPO A08).



GMC model shown (Chevrolet model available)

6-WINDOW BODY GLASS (RPO A07)

Full body glass consisting of six fixed-glass windows. Option is comprised of LH and RH rear-quarter window glass, LH front-quarter window glass, RH cargo door glass, and LH and RH rear cargo door glass. Includes interior non-glare mirror.

FIXED REAR DOOR GLASS (RPO A12)

Consists of RH and LH rear door fixed glass. Includes interior non-glare mirror. Included with 6-Window Body Glass (RPO A07).

SWING-OUT LH SIDE GLASS (RPO A17)

Consists of divided, bright-framed swing-out glass installed on the LH side of the body opposite the RH sliding cargo door. Individual latches allow independent operation. Requires Swing-Out Sliding Side Door Glass (RPO A19).

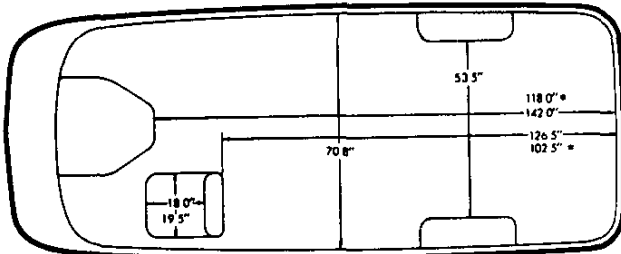
SWING-OUT SLIDING SIDE DOOR GLASS (RPO A19)

Swing-out windows for the RH sliding side cargo door are bright framed and divided at the center for individual operation.

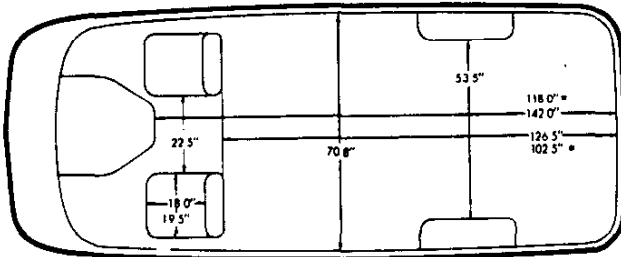
SWING-OUT REAR DOOR GLASS (RPO A18)

Consists of LH and RH rear cargo door glass with swing-out hinge and latch. Includes interior non-glare mirror.

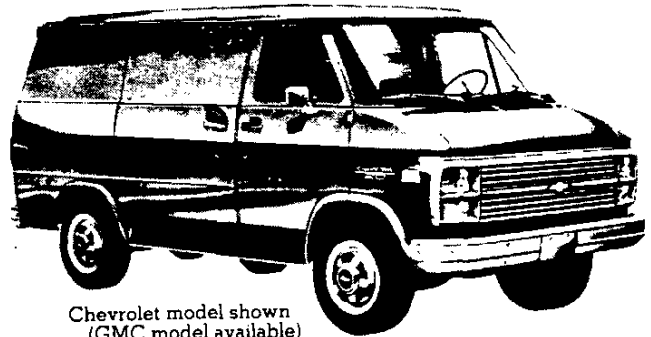
CHEVY VAN/VANDURA



STANDARD DRIVER'S SEAT ONLY



WITH OPTIONAL RH PASSENGER SEAT



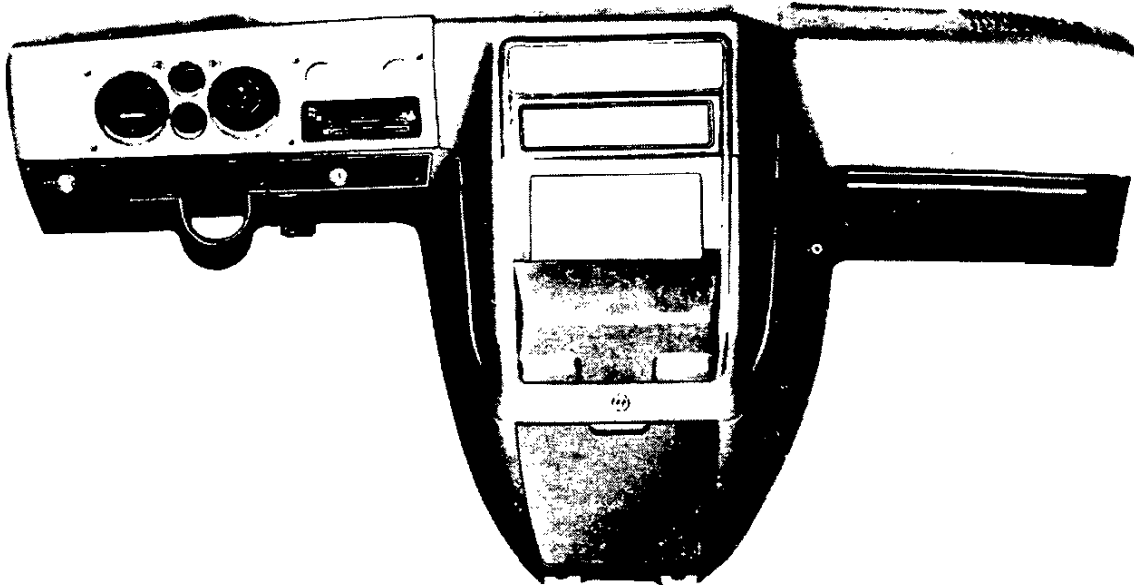
Chevrolet model shown
(GMC model available)

CHEVY VAN/VANDURA SEATING AND LOADSPACE

Seating arrangement for standard and optional front seat.

*110" WB MODELS

INSTRUMENTS



The standard instrument cluster gages and heater controls are set into the molded plastic instrument panel and have bright bezels. The large LH opening contains the speedometer, odometer, high beam indicator, and service-parking brake warning light. Diesel engine models will also have warning lights for low coolant, glow plugs and water-in-fuel.

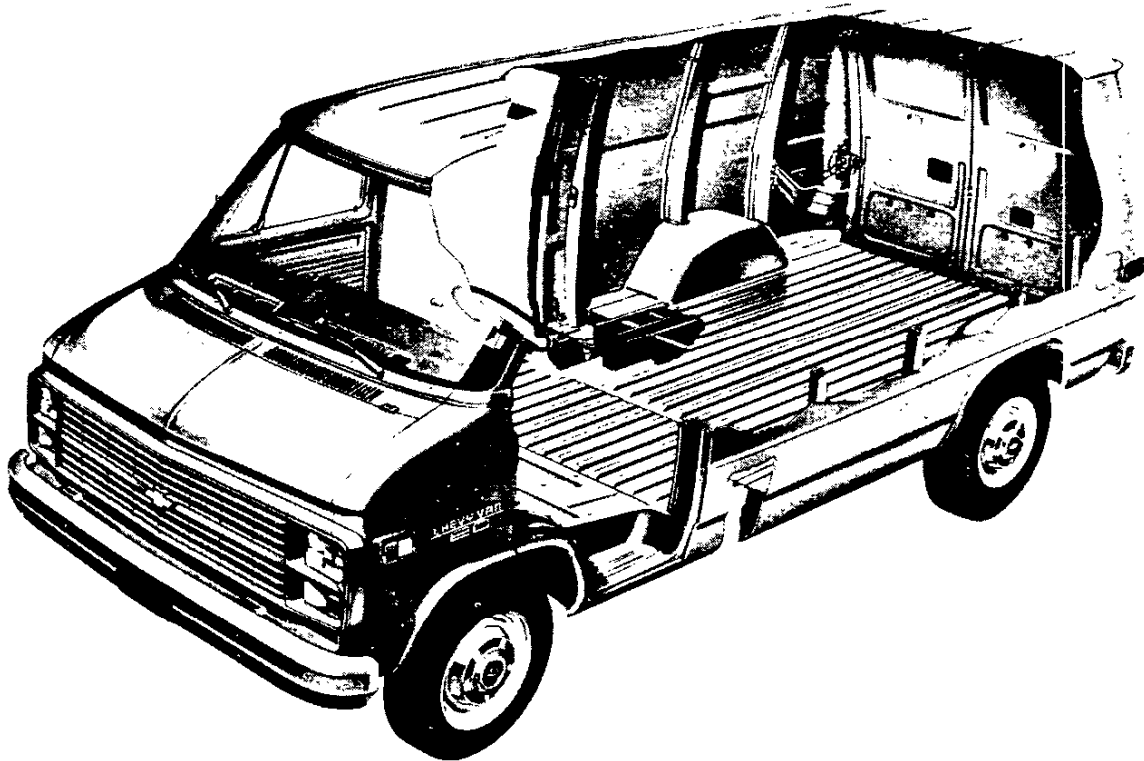
The large RH opening contains the fuel gage with a graphic symbol. An "Unleaded Fuel Only" notation is carried on the face of the fuel gage for models which require this fuel. The upper small opening between these two large openings houses the warning lights with graphic symbols for temperature, low oil pressure and generator. The lower opening is provided to house the RPO U35 electric clock.

On the upper RH side the two small openings are provided to house the controls for the RPO C36 rear heater (LH) and the RPO C69 rear air conditioner (RH). Below these openings are the heater/defogger and optional front air conditioner controls with graphic symbols for the fan and defogger. A similar instrument cluster with voltmeter, oil pressure gage and engine temperature gage is available as RPO Z53.

The area below the instrument cluster contains, from left to right, the windshield washer/wiper switch, with graphic symbol, main light switch, and ignition switch. This lower area has a black applique with bright trim. At the far left is the provision for the LH front air conditioner air outlet.

CHEVY VAN/VANDURA

BODY CONSTRUCTION FEATURES



The all-steel, Chevy Van/Vandura and Sportvan/Rally bodies feature body-frame integral construction for outstanding structural rigidity and excellent durability. The basic bodies of either the nominal 15 foot (110" WB) or 17 foot (125" WB) models are comprised of an underbody structure, front end structure, left and right hand side panel structures, and a roof panel structure.

Longitudinal side rails, cross sills, and outriggers form the integral frame to which front and rear floor panels are welded, completing the underbody structure. Main structural members are of heavy-gage steel. A step well is incorporated in the underbody in the area adjacent to the front doors and sliding side door to provide convenient entry and exit.

The front end structure incorporates an engine compartment with outside opening hood panel which affords quick and easy access to 27 service points, such as the engine, radiator, battery, brake master cylinder and windshield washer reservoir. The radiator support upper tie bar and baffles are mechanically attached to facilitate engine removal. A plenum chamber with high-level air intake is utilized in the front end structure to assure a plentiful supply of dry, outside air for interior heating and ventilating as well as to add rigidity to the overall body structure. Air outlets to the interior are provided on the left hand and right hand sides by manually controlled doors (RH door omitted with optional air conditioning).

Side panel structures are comprised basically of seamless, one-piece outer panels reinforced with vertical strainers and welded to roof rails at the top and to rocker panels at the bottom. Left hand side panel structures utilize three vertical strainers, with a fourth strainer added for 17-foot bodies. Right hand side panel structures, which are smaller because of the provision for the base side load door, are reinforced with one vertical strainer in 15-foot body applications and two strainers in 17-foot body applications. Two window openings are incorporated in the left hand side panel for all Sportvans/Rally, or for Chevy Vans/Vandura with RPO A07 body glass; one window is incorporated for Chevy Vans/Vandura with RPO A17 body glass. The right hand side panel for Sportvan/Rally models, or Chevy Van/Vandura with RPO A07 or A08 body glass, has one window. Provision is made at the rear of the left hand side panel for incorporation of a door to conceal the fuel tank filler.

Roof panels are of one-piece design and are embossed with six longitudinal stiffening ribs. Four roof bows support the 15-foot body roof panel, while five roof bows are used for the 17-foot body.

Special attention is given to corrosion prevention during the construction and final finishing of the body. The following body design features occur during the construction of the body:

1. Use of special steel (galvanized, zinc iron alloy, zinc coated) for body components especially subject to corrosion.
2. Use of one piece outer panels to minimize exterior joints where corrosion might occur.
3. Use of heavy-gage steel for main underbody components.
4. Use of weld-through sealers in the assembly process to assure strong welds.

After body construction is completed, additional corrosion preventative steps are taken in the final finishing operation. The following occur:

1. The body, doors and hood are thoroughly cleaned by processing them through a 7-stage zinc phosphate washer.
2. Next, the body, doors and hood are primed by the Elpo electro-coating process which is the deposition of an electrically charged colloidal paint using an electric current. Electro-coating assures uniform application of primer even on surfaces normally inaccessible. In the process, the body, doors and hood are submerged in an emulsion of water and paint; the body, doors and hood and the emulsion are then oppositely charged, causing the paint to adhere to the metal.
3. Sealers are then applied to all critical interior-exterior joints.
4. Undercoating is sprayed on the undersurfaces of the wheel-housings, front door step panels and body rocker panels.
5. The body, doors and hood are painted with enamel.
6. A sealer pad is installed on the top surface of the floor panel at the left hand side, and is bonded to the floor panel as the body bakes in the topcoat oven.
7. The lower inside surfaces of the doors and rocker panels are sprayed with aluminum wax preservative.
8. A protective coating is applied to the front door hinge pins.
9. Finally, an anti-chip coating is added which extends from the rear of the front wheel openings to the rear door openings to prevent stone chipping.

CHEVY VAN/VANDURA

INTERIOR AND EXTERIOR COLOR AVAILABILITY CHART

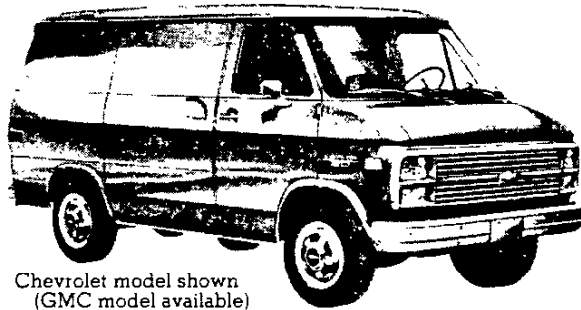
Please Note: Exterior and interior paint combinations shown in chart below are those recommended by Chevrolet/GMC. Any exterior color combination may be ordered with any available seat trim if the particular combination is desired by a customer. For special paint applications please contact the Zone Office.

INTERIOR COLORS			Almond	Black	Blue	Carmine	Gray
STANDARD MODEL (Two Seats w/A57)							
Vinyl Driver Seat			VAA2		VDD2		
Vinyl High Back Bucket Driver Seat			VAA4		VDD4		
Custom Vinyl High Back Bucket Seats			XAA4	XBB4	XDD4	XRR4	XTT4
EXTERIOR COLORS	Primary	Secondary	RECOMMENDED INTERIOR TRIM COLORS				
ALMOND	59	59	X	X			
White, Frost	59	12	X				
BLACK, MIDNIGHT	19	19	X	X		X	X
Silver (Metallic)	19	17		X			X
White, Frost	19	12		X			
BLUE, LIGHT (Metallic)	21	21		X	X		X
Blue, Midnight	21	29			X		X
White, Frost	21	12			X		
BLUE, MIDNIGHT	29	29		X	X		X
Silver (Metallic)	29	17			X		X
White, Frost	29	12			X		
JADESTONE, DARK (Metallic)	49	49	X	X			X
Silver (Metallic)	49	17					X
JADESTONE, LIGHT (Metallic)	44	44		X			
RED, CARMINE	70	70	X	X		X	
Almond	70	59	X			X	
Silver (Metallic)	70	17				X	X
White, Frost	70	12				X	
SILVER (Metallic)	17	17		X	X	X	X
Black, Midnight	17	19		X			X
Blue, Midnight	17	29			X		
Red, Carmine	17	70				X	
White, Frost	17	12					X
WALNUT (Metallic)	69	69	X	X			
Almond	69	59	X				
White, Frost	69	12	X				
WHITE, FROST	12	12	X	X	X	X	X
Almond	12	59	X				
Black, Midnight	12	19		X			X
Blue, Midnight	12	29			X		
Red, Carmine	12	70				X	
Silver (Metallic)	12	17		X			X

CHEVY VAN/VANDURA

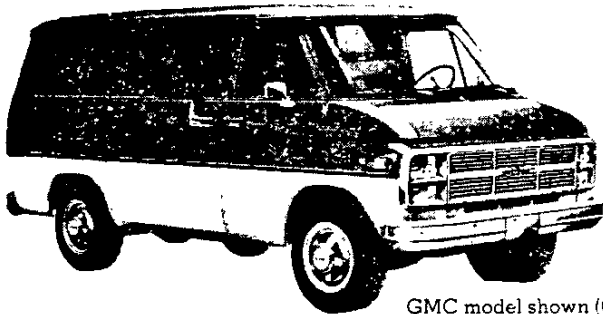
SOLID AND TWO-TONE* EXTERIOR COLOR COMBINATIONS

The application of paint for solid and two-tone exterior color combinations is shown below.



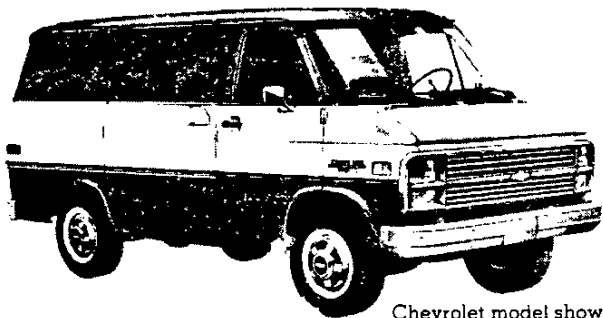
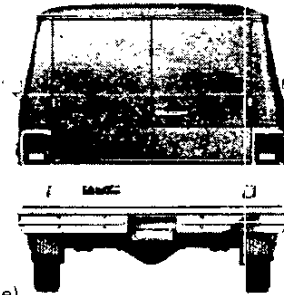
Chevrolet model shown
(GMC model available)

Solid color paint (ZY1) is standard on all models. All painted areas of the body are the same color.



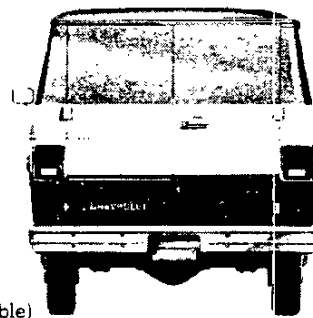
GMC model shown (Chevrolet model available)

Special two-tone (ZY3) paint colors include black body side and rear moldings with bright trim plus bright tail light trim. The primary paint color is applied to the areas above the moldings. The secondary color is applied to the areas below the moldings.



Chevrolet model shown (GMC model available)

Deluxe two-tone (ZY4) paint colors include black body side and rear moldings with bright trim plus bright tail light trim. The primary paint color is applied to the areas above the belt line styling crease line and below the moldings. The secondary color is applied to the areas between the belt line styling crease line and the moldings.



*Optional at extra cost.