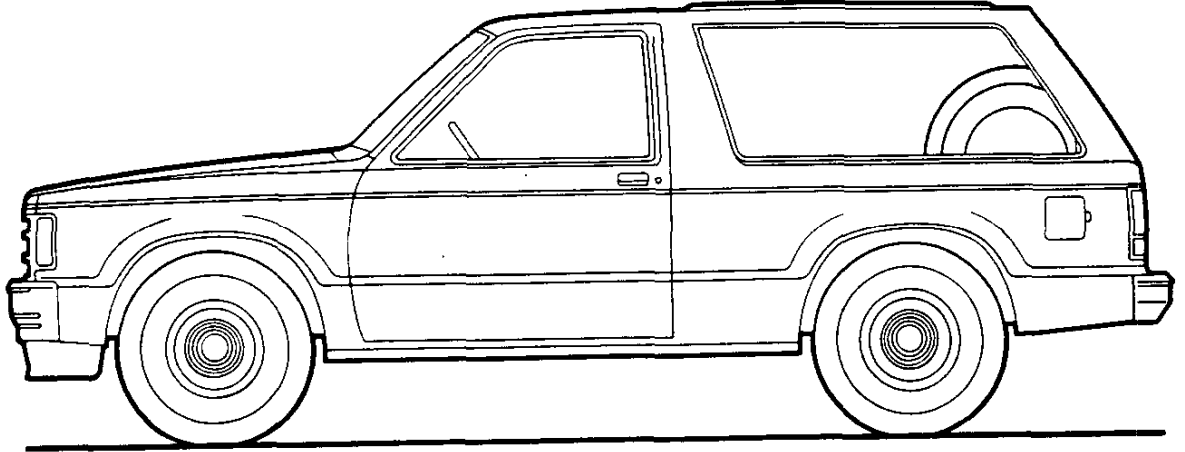


# S-10/15 BLAZER/JIMMY 2- & 4-WHEEL DRIVE

## MODEL SELECTOR



SERIES	MODEL NUMBER	BODY ORDERING CODE
		GASOLINE MODELS
<b>S-10/S-15</b> (4x2)	S10516	E55
<b>S-10/S-15</b> (4x4)	T10516	E55

1984

# S-10/15 BLAZER/JIMMY 2- & 4-WHEEL DRIVE

**GASOLINE**

## STANDARD SPECIFICATIONS

(See Gray Tab Section for Specification Details)

Series	S-10/15 4x2	S-10/15 4x4
<b>Engine</b>	■2.0 Liter, 2-bbl. L4 9.13; 71.86 sq. in.	
<b>Base Equip.</b>	Oiled-paper Element	
<b>Clutch</b>	Throwaway Type	
<b>Air Filter</b>	Single Aluminized	
<b>Oil Filter</b>	Meets Government Requirements	
<b>Exhaust System</b>		
<b>Emission Control Systems</b>		
<b>Suspension, Front</b>	Independent	Independent Driving Axle
<b>Type</b>	Coil Springs	Torsion Bar
<b>Axle Capacity</b>	2200 lb.	2400 lb.
<b>Axle Ratio</b>	—	4.11
<b>Springs @ Ground</b>	1100 lb. ea.	1200 lb. ea.
<b>Shock Absorbers</b>	25mm dia.	25mm dia.
<b>Stabilizer Bar</b>	29mm dia.	32mm dia.
<b>Suspension, Rear</b>	Salisbury Axle; Hypoid Drive; Two-stage Multi-leaf Springs	
<b>Type</b>	Leaf Springs	
<b>Axle Capacity</b>	2600 lb.	2700 lb.
<b>Axle Ratio</b>	3.73	4.11
<b>Springs, Main @ Ground</b>	1350 lb. ea.	
<b>Shock Absorbers</b>	25mm dia.	
<b>Brakes</b>	Hydraulic; Self-adjusting	
<b>Front</b>	Disc; 10.51" Rotor	
<b>Rear</b>	Drum; 9.49" x 2"	
<b>Booster</b>	Single Diaphragm	
<b>Parking</b>	Cable to Rear Wheels	
<b>Electrical</b>	12 Volt; Negative Ground	
<b>Battery—Freedom Type</b>	▲405 CCA ♦ @ 0°F.	
<b>—Reserve Capacity</b>	75 min. @ 80°F.	
<b>Delcotron Generator</b>	56 amp.	
<b>Frame</b>	Carbon Steel; 36-39,000 psi	
<b>Section Modulus</b>	1.78	
<b>Fuel Tank (nominal capacity)</b>	13.2 gal.	
<b>Steering Gear Type</b>	Manual; Recirculating Ball Gear	
<b>Linkage</b>	Parallelogram	
<b>Transmission</b>	4-Speed Manual	
<b>Shift Location</b>	Floor	
<b>Transfer Case</b>	—	New Process 207 2-Speed
<b>Shift Lever</b>	—	Single Lever
<b>Tires</b>	(4) P195/75R15 (Fiberglass Belted)	
<b>Spare</b>	(1) T155/90D16	
<b>Wheels</b>	(4) Disc, 15" x 6"	
<b>Spare</b>	(1) Disc, 16" x 4"	

♦CCA-Cold Cranking Amps

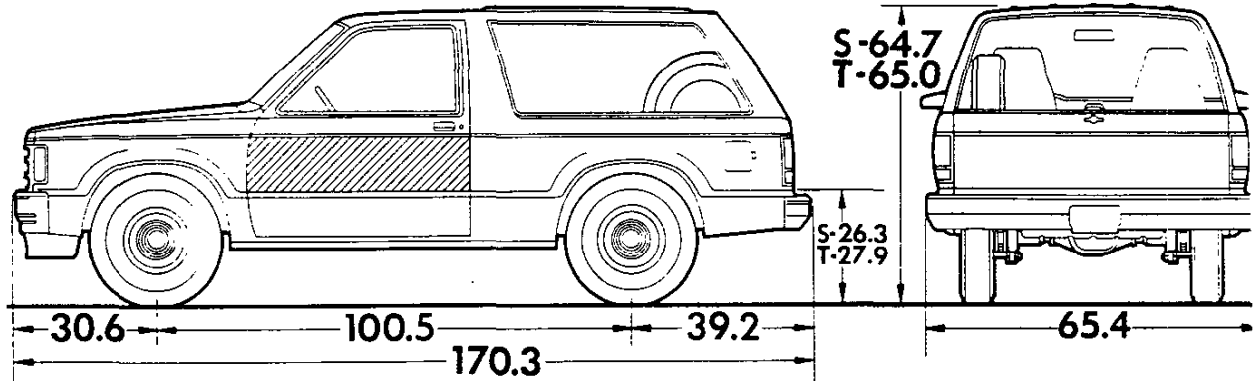
■Standard engine not available for registration in the State of California; see Power Team Chart.

▲315 CCA in California

# S-10/15 BLAZER/JIMMY 2- & 4-WHEEL DRIVE

**GASOLINE**

Body Ordering Code: E55



Sign Panel Area (side)  
12 3/4" x 45"



Model	Body Ordering Code	Engine No. Cyl.	Curb Weight (lb)			Model Weights (lb)*			Ground Clearance (in)*
			Front	Rear	Total	Front	Rear	Total	Minimum
<b>S10516</b>	E55	4	1461	1430	2891	1600	1591	3191	7.4
<b>T10516</b>	E55	4	1664	1483	3147	1803	1644	3447	6.6

\* Dimensions with standard equipment, unloaded.

\*Model Weights include curb weight plus occupants (standard seating capacity x 150 lbs.). Total Weight may vary as much as  $\pm 50$  lbs. to allow for production build variation.

## PAYLOAD SELECTOR

±Maximum Ratings				Minimum Equipment Required for GVW Rating		
Payload (lb)	GVW Range (lb)	†GAWR (lb)		Tires, Front	Tires, Rear	Chassis Equipment
		Front	Rear			
<b>S-10/S-15 MODELS (2-WHEEL DRIVE)</b>						
<b>1000</b>	3880 to 4600	2200	2600	P195/75R15	P195/75R15	Standard
<b>S-10/S-15 MODELS (4-WHEEL DRIVE)</b>						
<b>1000</b>	4125 to 4880	2400	2684	P195/75R15	P195/75R15	Standard

±GAWRs shown are the maximum for each axle with the equipment listed. Maximum ratings include an additional 50 lbs. allowance for vehicle weight variance.

†GAWR - Gross Axle Weight Rating.

# S-10/15 BLAZER/JIMMY 2- & 4-WHEEL DRIVE

## POWER TEAMS

Note: All payloads for S Blazer Jimmy are 1000 lbs

### ALL STATES EXCEPT CALIFORNIA

#### POWER TEAMS (MUST ORDER ENGINE, TRANSMISSION AND REAR AXLE)

ENGINE	TRANSMISSION			AXLES		
	4-SP	5-SP	AUTO	3.42	3.73	4.11
<b>W/NA5 STANDARD EMISSION EQUIPMENT</b>						
<b>—S10516</b>						
LQ2 L4 2.0 Liter 2BBL	MM4	MM5		—	GQ1	H04
LR2 V6 2.8 Liter 2BBL (Reqs N40 Steering)	MM4			GQ1	GT4	—
		MM5		—	GQ1	—
			MX0	GQ1	%GT4	—
<b>—T10516</b>						
LQ2 L4 2.0 Liter 2BBL	MM4	MM5		—	—	GQ1
LR2 V6 2.8 Liter 2BBL (Reqs N40 Steering)	MM4			*GQ1	GT4	—
		MM5		—	GQ1	—
			MX0	*GQ1	GT4	#H04
<b>W/NA6 HIGH ALTITUDE EMISSION EQUIPMENT</b>						
<b>—S10516</b>						
LQ2 L4 2.0 Liter 2BBL	MM4	MM5		—	—	GQ1
LR2 V6 2.8 Liter 2BBL (Reqs N40 Steering)	MM4		MX0	—	GQ1	—
		MM5				
<b>—T10516</b>						
LQ2 L4 2.0 Liter 2BBL	MM4	MM5		—	—	GQ1
LR2 V6 2.8 Liter 2BBL (Reqs N40 Steering)	MM4		MX0	—	*GQ1	\$H04
		MM5				

### CALIFORNIA ONLY

ENGINE	TRANSMISSION			AXLES		
	4-SP	5-SP	AUTO	3.42	3.73	4.11
<b>W/YF5 CALIFORNIA EMISSION REQUIREMENTS</b>						
<b>—S10516</b>						
LR1 L4 1.9 Liter 2BBL	MM4	MM5		GU6	GQ1	—
LR2 V6 2.8 Liter 2BBL (Reqs N40 Steering)	MM4			GQ1	GT4	—
		MM5		—	GQ1	—
			MX0	GQ1	%GT4	—
<b>—T10516</b>						
LR1 L4 1.9 Liter 2BBL	MM4	MM5		—	—	GQ1
LR2 V6 2.8 Liter 2BBL (Reqs N40 Steering)	MM4			*GQ1	GT4	—
		MM5		—	GQ1	\$H04
			MX0	*GQ1	GT4	#H04

%Reqs Z82 Trailing  
 \*N/A P235/75R15 Tires  
 \$Reqs P235/75R15 Tires  
 #Reqs P235/75R15 Tires and Z82 Trailing

### ENGINE RATINGS— ALL STATES

SAE Net Ratings	1.9 Liter 119-2 BBL L4	2.0 Liter* 121-2 BBL L4	2.8 Liter 173-2 BBL V6
Net Horsepower . . . . .	82 @ 4600 rpm	83 @ 4600 rpm	110 @ 4800 rpm
Net Torque, lb-ft . . . . .	101 @ 3000 rpm	108 @ 2400 rpm	145 @ 2100 rpm

\*Not available for registration in the State of California

# S10/15 2 AND 4 WHEEL DRIVE BLAZER/JIMMY (1000-lb Payload)

## 1984 VEHICLES WITH STANDARD EQUIPMENT

Prices shown are effective with vehicles produced on and after February 13, 1984

Description	Model Number	Body Code	Wheel Base	Factory D&H(a)	List Price	Mfr's Suggested Retail Price*	Group Number
◆ 4-Cylinder 2.0 Liter 2 BBL L4 Gasoline Engine-Engine Ordering Code LQ2							
<b>S10/15 Series 2-Wheel Drive</b>							
Tailgate .....	CS/TS10516	E55	100.5"	N.A.	8468.00	8468.00	11
<b>S10/15 Series 4-Wheel Drive</b>							
Tailgate .....	CT/TT10516	E55	100.5"	N.A.	9685.00	9685.00	11

★ Manufacturer's Suggested Retail Prices do not include applicable destination charges, state and local taxes, license fees, optional equipment or accessories or special items or services.

◆ Refer to Dealer Order Guide for California Requirements.

## OPTIONS AND ACCESSORIES WHEN INSTALLED BY GENERAL MOTORS

Prices shown are effective with vehicles produced on and after February 13, 1984

Description	Option Number	Factory D&H(a)	List Price	Mfr's Suggested Retail Price○
<b>Tahoe/Sierra Classic Equipment:</b> (See Interior and Exterior Color Selection Charts) Includes color-keyed door handle inserts, B84 Body Side and Bright Wheel Opening Moldings, black quarter window moldings, special tailgate applique, P06 Wheel Trim Rings, P17 Spare Tire Cover, nameplate on instrument panel, special door trim with coin holder in LH door panel, deluxe armrest and map pockets, special color-keyed carpeting, D34 Visor Mirror, special body insulation and Z53 Gage Package with Trip Odometer .....				
	YC2	N.A.	576.00	576.00
<b>Sport/Gypsy Equipment:</b> (See Interior and Exterior Color Selection Charts) Available only when ZY7 Sport Two-Tone Paint and Sport Cloth Trim is specified. Includes A78 Reclining Seat Backs, D55 Console, VE6 Color-Keyed Front and Rear Bumpers, color-keyed door handle inserts, P17 Spare Tire Cover, B84 Body Side and Black Wheel Opening Moldings, black quarter window moldings, special tailgate applique, nameplate on instrument panel, special door trim with coin holder in LH door panel, deluxe armrests and map pockets, color-keyed carpeting, D34 Visor Mirror, special body insulation and Z53 Gage Package with Trip Odometer.				
S10516 only. Includes ZJ7 Argent Styled Wheels .....	YC3	N.A.	944.00	944.00
T10516 only. Includes P06 Trim Rings .....	YC3	N.A.	910.00	910.00
<b>Seat Trim:</b> (See Interior and Exterior Color Selection Chart for availability and ordering information).				
X**4 Custom Vinyl High Back Buckets. Driver and Passenger. Not available when YC3 is specified .....	...	NO ADDITIONAL CHARGE		
H**4 Special Custom Cloth High Back Buckets. Available only when YC2 is specified .....	...	NO ADDITIONAL CHARGE		
S**4 Sport Cloth High Back Buckets. Driver and Passenger. Included only when YC3 is specified.	...	NO ADDITIONAL CHARGE		
Without AM7 Rear Seat .....	...	N.A.	24.00	24.00
With AM7 Rear Seat .....	...	NO ADDITIONAL CHARGE		
B**4 High Country Sheepskin High-Back Bucket Seats. Driver and Passenger only. Available only when YC2 or YC3 is specified. With YC2 and AM7 Optional seat. Optional seat is Custom Cloth Trim. With YC3 and AM7 Optional Rear Seat. Optional seat is Sport Cloth Trim. ....	...	N.A.	295.00	295.00
<b>Paints, Exterior:</b> (See Interior and Exterior Color Selection Chart for ordering information and paint application).				
Solid .....	ZY1	NO ADDITIONAL CHARGE		
<b>Sport Two-Tone.</b> Included when YC3 is specified.				
Without YC2. Includes striping that matches secondary paint color except when YC3 is specified. Area below striping painted secondary color choice .....	ZY7	N.A.	220.00	220.00
With YC2. Area below B84 Body Side and Bright Wheel Opening Moldings painted secondary color choice .....	ZY7	N.A.	155.00	155.00

(a) D & H Charges on vehicle and optional equipment include reimbursement to ordering Division for any tax that it has paid, incurred or agreed to pay thereon.

◇ State and local taxes not included.

# S10/15 2 AND 4 WHEEL DRIVE BLAZER/JIMMY

## OPTIONS AND ACCESSORIES WHEN INSTALLED BY GENERAL MOTORS

Prices shown are effective with vehicles produced on and after February 13, 1984

Description	Option Number	Factory D&H(a)	List Price	Mfr's Suggested Retail Price ◊
<b>Paints, Exterior: (Continued)</b>				
<i>Special Two-Tone.</i> Middle area painted secondary color choice.				
Without YC2. Includes B84 Body Side and Bright Wheel Opening Moldings .....	ZY8	N.A.	301.00	301.00
With YC2 .....	ZY8	N.A.	162.00	162.00
<b>Emission Systems:</b> Dealer Note - One of the following emission options must be specified. (See Power Teams Chart for Engine and Transmission Availability).				
<i>California Emission Requirements.</i> Includes all testing, equipment and /or certification necessary for registration in the state of California. Not Available when NA5 Standard Emissions or NA6 High Altitude Emissions are specified ..				
	YF5	N.A.	99.00	99.00
<i>High Altitude Emission Equipment</i> .....	NA6	NO ADDITIONAL CHARGE		
<i>Standard Emission Equipment.</i> Not available when YF5 California Emissions or NA6 High Altitude Emissions are specified .....	NA5	NO ADDITIONAL CHARGE		
<b>Engines:</b> (See Power Teams Chart for availability and complete specifications)				
<i>Gasoline</i>				
2.8 Liter 2 BBL V6. Available only when N40 Power Steering is specified .....	LR2	N.A.	243.00	243.00
2.0 Liter 2 BBL L4 .....	LQ2	NO ADDITIONAL CHARGE		
1.9 Liter 2 BBL L4. Available only when YF5 California Emissions are specified .....	LR1	NO ADDITIONAL CHARGE		
<b>Transmissions:</b> (See Power Teams Chart for availability and complete specifications).				
<i>4-Speed Automatic with Overdrive.</i> Not available when LR1 1.9 Liter or LQ2 2.0 Liter Engine is specified .....				
4-Speed Manual .....	MX0	N.A.	650.00	650.00
5-Speed Manual with Overdrive .....	MM4	NO ADDITIONAL CHARGE		
	MM5	N.A.	225.00	225.00
<b>Axles, Rear:</b> (See Power Teams Chart for option number selection, availability and complete specifications)				
Optional Ratio .....		N.A.	36.00	36.00
Locking Differential .....	G80	N.A.	230.00	230.00
<b>Tires:</b> Includes Compact Spare Tire				
<i>All wheel size, Front and Rear are 6.00" except when QEB Tires, N90 or ZJ7 Wheels are specified, then wheel size is 7.00". (See Tire Charts for Tire Availability)</i>				
<b>TUBELESS</b>				
P195/75R15 Highway Fiberglass Belted Radial Ply Blackwall (Maximum Capacity 1342-lbs) .....	QYP	NO ADDITIONAL CHARGE		
P195/75R15 Highway Fiberglass Belted Radial Ply Whitewall (Maximum Capacity 1342-lbs) .....	QYQ	N.C.	64.00	64.00
P205/75R15 Highway Steel Belted Radial Ply Blackwall (Maximum Capacity 1453-lbs) .....	QJU	N.C.	97.00	97.00
P205/75R15 On-Off Road Steel Belted Radial Ply White Lettered (Maximum Capacity 1453-lbs) .....	QJL	N.C.	224.00	224.00
P205/75R15 Highway Steel Belted Radial Ply White Lettered (Maximum Capacity 1453-lbs) .....	QMC	N.C.	188.00	188.00
P205/75R15 On-Off Road Steel Belted Radial Ply Blackwall (Maximum Capacity 1453-lbs) .....	QJT	N.C.	133.00	133.00
P235/75R15 On-Off Road Steel Belted Radial Ply White Lettered (Maximum Capacity 1453-lbs). T1 Series only. Available only when ZK5 Full Size Spare Tire and LR2 2.8 Liter Engine is specified. Included when Z71 Chassis Equipment Package is specified .....	QEB	N.C.	360.00	360.00
P205/75R15 On-Off Road Steel Belted Radial Ply Blackwall (Front Highway, Rear On-Off Road) (Maximum Capacity 1453-lbs). S1 Series only .....	Q1C	N.C.	115.00	115.00

(a) D & H Charges on vehicle and optional equipment include reimbursement to ordering Division for any tax that it has paid, incurred or agreed to pay thereon.  
 ◊ State and local taxes not included.

# S10/15 2 AND 4 WHEEL DRIVE BLAZER/JIMMY

## OPTIONS AND ACCESSORIES WHEN INSTALLED BY GENERAL MOTORS

Prices shown are effective with vehicles produced on and after February 13, 1984

Description	Option Number	Factory D&H(s)	List Price	Mfr's Suggested Retail Price ◊
<b>OTHER OPTIONS</b>				
<b>Air Conditioning: All-Weather.</b> LR1 1.9 Liter Engine is not available when C49 Rear Window Defogger is specified. Available only when N40 Power Steering is specified. Includes V01 H.D. Radiator when V02 Radiator and Transmission Oil Cooler is not specified. Without C49 Rear Window Defogger, also includes K81 66-Amp Generator. ....	C60	N.A.	695.00	695.00
<b>Battery: Heavy-Duty.</b> 515 Cold Cranking Amps, Delco Freedom. Included when V10 Cold-Climate Package is specified .....	UA1	N.A.	50.00	50.00
<b>Bumper Equipment:</b> <i>Bumpers, Painted.</i> Color-Keyed with rub strips. Front and Rear. Available only when ZY7 Sport or ZY8 Special Two-Tone Paint is specified. Included when YC3 is specified <i>Bumper Guards, Front Black</i> .....	VE6 V28 V55	NO ADDITIONAL CHARGE N.A. N.A.	29.00 115.00	29.00 115.00
<b>Carrier, Luggage</b> .....				
<b>Chassis Equipment: Off-Road Package.</b> T10516 only. Available only when LR2 2.8 Liter Engine is specified. Not available when F51 H.D. Shock Absorbers are specified. Includes QEB P235/75R15 tires, ZK5 Full Size Spare, special torsion bars, shock absorbers, jounce bumpers, front stabilizer, V76 Tow Hooks and NY7 Transfer Case Shield Without YC2 or YC3. Includes P06 Trim Rings .....	Z71	N.A.	703.00	703.00
With YC2 or YC3 .....	Z71	N.A.	649.00	649.00
<b>Clock: Electronic Digital.</b> Available only when UU9 or U69 Radio is specified .....	UE8	N.A.	39.00	39.00
<b>Cold-Climate Package:</b> Includes UA1 H.D. Battery and special insulation. Without C60 Air Conditioning or C49 Defogger. Includes K81 66-Amp Generator Without YC2 or YC3 .....	V10	N.A.	172.00	172.00
With YC2 or YC3 .....	V10	N.A.	131.00	131.00
With C60 Air Conditioning or C49 Defogger Without YC2 or YC3 .....	V10	N.A.	142.00	142.00
With YC2 or YC3 .....	V10	N.A.	101.00	101.00
<b>Console: Front Compartment Floor.</b> Included when YC3 is specified .....	D55	N.A.	105.00	105.00
<b>Coolers:</b> <i>Engine Oil, S1 Series only.</i> Available only when LR2 2.8 Liter Engine, MXO Automatic Transmission and V01 H.D. Radiator or V02 H.D. Radiator and Transmission Oil Cooler are specified .....	KC4	N.A.	116.00	116.00
<i>Radiator and Transmission Oil, H.D.</i> Available only when LR2 2.8 Liter Engine and MXO Automatic Transmission are specified. Without C60 Air Conditioning .....	V02	N.A.	108.00	108.00
With C60 Air Conditioning .....	V02	N.A.	57.00	57.00
<b>Cooling: Radiator, Heavy-Duty.</b> Not available when V02 Radiator and Transmission Oil Cooler is specified. Included when C60 Air Conditioning is specified .....	V01	N.A.	51.00	51.00
<b>Cover, Spare Tire:</b> Included when YC2 or YC3 is specified .....	P17	N.A.	31.00	31.00
<b>Deflector, Air</b> .....	C51	N.A.	40.00	40.00
<b>Defogger, Rear Window: Electric.</b> Without C60 Air Conditioning or V10 Cold-Climate Package. Includes K81 66-Amp Generator .....	C49	N.A.	140.00	140.00
With C60 Air Conditioning or V10 Cold-Climate Package ..	C49	N.A.	110.00	110.00
<b>Door Lock System, Power: Side Doors only.</b> Included when ZQ2 Operating Convenience Package is specified .....	AU3	N.A.	130.00	130.00

(a) D & H Charges on vehicle and optional equipment include reimbursement to ordering Division for any tax that it has paid, incurred or agreed to pay thereon.  
◊ State and local taxes not included.

# S10/15 2 AND 4 WHEEL DRIVE BLAZER/JIMMY

## OPTIONS AND ACCESSORIES WHEN INSTALLED BY GENERAL MOTORS

Prices shown are effective with vehicles produced on and after February 13, 1984

Description	Option Number	Factory D&H(a)	List Price	Mfr's Suggested Retail Price◇
<b>OTHER OPTIONS</b>				
<b>Floor Covering: Mats, Color-Keyed.</b> Available only when YC2 or YC3 is specified.				
Front .....	B32	N.A.	14.00	14.00
Rear .....	B33	N.A.	11.00	11.00
<b>Gages:</b>				
<i>Voltmeter, Temperature, Oil Pressure and Trip Odometer.</i>				
Included when YC2, YC3 or U16 Tachometer is specified .				
Tachometer.	Z53	N.A.	56.00	56.00
Without YC2 or YC3. Includes Z53 Gage Package .....	U16	N.A.	109.00	109.00
With YC2 or YC3 .....	U16	N.A.	53.00	53.00
<b>Generator: 66-Amp Delcotron.</b> Not available when C60 Air Conditioning is specified with C49 Rear Window Defogger. Included when C60 Air Conditioning, C49 Rear Window Defogger or V10 Cold-Climate Package is specified .....				
	K81	N.A.	30.00	30.00
<b>Glass:</b>				
<i>Deep Tinted.</i> Includes dark laminated glass on rear quarters and rear window .....				
	AJ1	N.A.	182.00	182.00
<i>Deep Tinted with Light Tinted Rear Window.</i> Not available when AJ1 Deep Tinted Glass is specified. Includes dark laminated glass on rear quarter windows .....				
	AA3	N.A.	128.00	128.00
<b>Headlamps, Halogen</b> .....				
	TT4	N.A.	21.00	21.00
<b>Heater, Engine Block: 600 watts, 120 volts.</b> .....				
	K05	N.A.	31.00	31.00
<b>Lamp, Engine Compartment</b> .....				
	U26	N.A.	15.00	15.00
<b>Mirrors, Exterior: LH and RH. Below-Eye-Line Type.</b>				
<i>Painted</i> .....	D44	N.A.	48.00	48.00
<i>Bright</i> .....	D45	N.A.	78.00	78.00
<b>Mirror, Visor: RH.</b> Included when YC2 or YC3 is specified				
	D34	N.A.	7.00	7.00
<b>Moldings:</b>				
<i>Body Side and Wheel Opening.</i> Included when YC2, YC3 or ZY8 Special Two-Tone Paint is specified. Includes lower side and rear moldings of black plastic with bright trim and wheel opening moldings.				
Without ZY7 Sport Two-Tone Paint .....	B84	N.A.	139.00	139.00
With ZY7 Sport Two-Tone Paint .....	B84	N.A.	74.00	74.00
<i>Guards, Door Edge</i> .....	B93	N.A.	16.00	16.00
<i>Wheel Opening.</i>				
<i>Bright.</i> Not available when YC3 is specified. Included when YC2 or ZY8 Special Two-Tone Paint is specified. Also included with B84 Body Side and Wheel Opening Moldings except when YC3 is specified .....				
	B96	N.A.	28.00	28.00
<i>Black.</i> Included when YC3 is specified. Not available when B96 Bright Wheel Opening Moldings are specified				
Without B84 Body Side and Wheel Opening Moldings .....	B74	N.A.	40.00	40.00
With B84 Body Side and Wheel Opening Moldings .....	B74	N.A.	12.00	12.00
<b>Operating Convenience Package:</b> Includes AU3 Power Door Locks and A31 Power Windows .....				
	ZQ2	N.A.	310.00	310.00
<b>Preliminary Price Information</b> .....				
	B3W	N.A.	N.A.	N.A.
<b>Radio Equipment:</b>				
<i>AM Radio</i> .....	U63	N.A.	112.00	112.00
<i>AM/FM Radio</i> .....	U69	N.A.	171.00	171.00
<i>AM/FM Stereo Radio.</i> Electronically Tuned .....	UU9	N.A.	238.00	238.00
<i>AM/FM Stereo Radio and Stereo Cassette Tape with Clock.</i> Electronically Tuned .....	UU7	N.A.	377.00	377.00
<i>AM/FM Stereo Radio and Stereo Cassette Tape with Seek/Scan and Clock.</i> Electronically Tuned. Includes U66 Premium Dual Rear Speakers .....	UM6	N.A.	555.00	555.00
<i>Speakers, Premium Dual Rear.</i> Available only when UU7 or UU9 Radio is specified. Included when UM6 Radio is specified .....	U66	N.A.	25.00	25.00

(a) D & H Charges on vehicle and optional equipment include reimbursement to ordering Division for any tax that it has paid, incurred or agreed to pay thereon.  
◇ State and local taxes not included.



# S10/15 2 AND 4 WHEEL DRIVE BLAZER/JIMMY

## OPTIONS AND ACCESSORIES WHEN INSTALLED BY GENERAL MOTORS

Prices shown are effective with vehicles produced on and after February 13, 1984

Description	Option Number	Factory D&H(a)	List Price	Mfr's Suggested Retail Price <sup>◇</sup>
<b>OTHER OPTIONS</b>				
<b>Towing Device:</b> Two Front Towing Hooks. T1 Series only. Included when Z71 Chassis Equipment is specified . . . . .	V76	N.A.	35.00	35.00
<b>Trailer Hitch:</b> Dead Weight Type. 2,000-lb Capacity. Not available when Z82 H.D. Trailering is specified. Included when Z72 L.D. Trailering is specified . . . . .	VR2	N.A.	62.00	62.00
<b>Trailering Special:</b> (Refer Trailering Guide for additional information). <b>Heavy-Duty.</b> Available only when LR2 2.8 Liter Engine, 3.73 or 4.11 Rear Axle Ratio N40 Power Steering, MX0 Automatic Transmission and V02 Radiator and Transmission Oil Cooler are specified. Also requires K81 66-Amp Generator when C60 Air Conditioning, V10 Cold-Climate Package or C49 Rear Window Defogger is not specified. T1 Series with QEB P235/75 R15 Tires available only when 4.11 Rear Axle Ratio is specified. Includes 7-lead wiring harness, weight distributing hitch platform and H.D. flasher (See Trailering Guide in Recreational Vehicles Section for GCW ratings with available power train combinations.) . . . . .	Z82	N.A.	193.00	193.00
<b>Light Duty.</b> Available only when LR2 2.8 Liter Engine, MX0 Automatic Transmission and V01 H.D. Cooling, V02 Radiator and Transmission Oil Cooler or C60 Air Conditioning are specified. Includes 5-lead wiring harness and VR2 Dead Weight Trailer Hitch. . . . .	Z72	N.A.	100.00	100.00
<b>Wheel Trim:</b> Trim Rings. Included when ZJ7 Styled Wheels, Z71 Chassis Equipment, YC2 or YC3 is specified . . . . .	P06	N.A.	54.00	54.00
<b>Wheels:</b> <b>Styled.</b> Wheel size 7". Four wheels only. S1 Series only. Includes special hub caps and P06 Trim Rings. Included when YC3 is specified. Without YC2 . . . . .	ZJ7	N.A.	88.00	88.00
With YC2 . . . . .	ZJ7	N.A.	34.00	34.00
<b>Aluminum, Cast.</b> Wheel size 7". Four wheels only. T1 Series only. Not available when QYP or QYQ P195 Tires are specified. Without YC2 or YC3 . . . . .	N90	N.A.	285.00	285.00
With YC2 or YC3 . . . . .	N90	N.A.	231.00	231.00
<b>Windows:</b> <b>Power, Side Doors.</b> Included when ZQ2 Operating Convenience Package is specified . . . . .	A31	N.A.	180.00	180.00
<b>Sliding Side</b> . . . . .	AD5	N.A.	235.00	235.00
<b>Windshield Wiper System:</b> Intermittent . . . . .	CD4	N.A.	50.00	50.00

(a) D & H Charges on vehicle and optional equipment include reimbursement to ordering Division for any tax that it has paid, incurred or agreed to pay thereon.  
<sup>◇</sup> State and local taxes not included.

# S10/15 2 AND 4 WHEEL DRIVE BLAZER/JIMMY

## OPTIONS AND ACCESSORIES WHEN INSTALLED BY GENERAL MOTORS

Prices shown are effective with vehicles produced on and after February 13, 1984

Description	Option Number	Factory D&H(a)	List Price	Mfr's Suggested Retail Price ◊
<b>OTHER OPTIONS</b>				
<b>Seats:</b> (Dealer Note— AM7 Rear Seat or YG4 Rear Seat Not Desired must be specified. Added weight includes passenger weight allowance of 150-lbs per seating position. Refer to vehicle and option weight section of Data Book)				
Folding Rear Bench. Includes armrests .....	AM7	N.A.	330.00	330.00
Optional Seat Not Desired .....	YG4	NO ADDITIONAL CHARGE		
Seat Backs, Reclining. R.H. and L.H. Included when YC3 is specified .....	A78	N.A.	65.00	65.00
<b>Shield, Transfer Case:</b> T1 Series only. Included when Z71 Chassis Equipment is specified .....	NY7	N.A.	65.00	65.00
<b>Shock Absorbers:</b> Heavy-Duty, Front and Rear. Not available when Z71 Chassis Equipment is specified .....	F51	N.A.	32.00	32.00
<b>Spare Tire:</b> Full size. Included with Z71 Chassis Equipment. Replaces Standard Compact Spare.				
<b>Highway</b>				
With QYP P195/75R15 Highway Fiberglass Belted Radial Ply Blackwall .....	ZK4	N.A.	31.00	31.00
With QYQ P195/75R15 Highway Fiberglass Belted Radial Ply Whitewall .....	ZK4	N.A.	40.00	40.00
With QJU P205/75R15 Highway Steel Belted Radial Ply Blackwall .....	ZK4	N.A.	52.00	52.00
With QMC P205/75R15 Highway Steel Belted Radial Ply White Lettered .....	ZK4	N.A.	70.00	70.00
With Q1C P205/75R15 Highway (Front) On-Off Road (Rear) Steel Belted Radial Ply Blackwall. S1 Series only On-Off Road .....	ZK4	N.A.	52.00	52.00
With QJT P205/75R15 Steel Belted Radial Ply Blackwall On-Off Road Front and Rear Tire. ....	ZK5	N.A.	54.00	54.00
With QJL P205/75R15 On-Off Road Steel Belted Radial Ply Whitewall .....	ZK5	N.A.	72.00	72.00
With QEB P235/75R15 Steel Belted Radial Ply White Lettered On-Off Road Front and Rear Tires. T1 Series only. Included when Z71 Chassis Equipment is specified .....	ZK5	N.A.	90.00	90.00
With Q1C P205/75R15 Steel Belted Radial Ply Blackwall On-Off Road .....	ZK5	N.A.	54.00	54.00
<b>Speed Control, Electronic</b> .....	K34	N.A.	185.00	185.00
<b>Steering:</b> (One of the following steering options must be specified.)				
Power .....	N40	N.A.	252.00	252.00
Power, Not Desired. Not available when Z82 Trailering Special is specified .....	N51	NO ADDITIONAL CHARGE		
<b>Steering Wheel: Comfortilt</b> .....	N33	N.A.	110.00	110.00
<b>Striping:</b> Available only when ZY1 Solid Paint is specified. Not available when B84 Body Side and Wheel Opening Moldings, YC2 or YC3 is specified. Included when ZY7 Sport Two-Tone Paint is specified.				
Black .....	09A	N.A.	65.00	65.00
Blue, Dark .....	28A	N.A.	65.00	65.00
Gold .....	64A	N.A.	65.00	65.00
Red .....	72A	N.A.	65.00	65.00
Silver .....	17A	N.A.	65.00	65.00
White .....	12A	N.A.	65.00	65.00
<b>Suspension Equipment:</b> Front, Heavy-Duty, T1 series only. Includes F51 H.D. front and rear shock absorbers. Recommended for snowplow type usage only .....				
	F60	N.A.	57.00	57.00
<b>Tailgate Window Release: Power</b> .....				
	AU6	N.A.	40.00	40.00
<b>Tank, Fuel:</b> LH Frame Mounted. Replaces Standard Production Fuel Tank. Approximately 20-gallon capacity ...				
	NK2	N.A.	45.00	45.00

(a) D & H Charges on vehicle and optional equipment include reimbursement to ordering Division for any tax that it has paid, incurred or agreed to pay thereon.  
 ◊ State and local taxes not included.

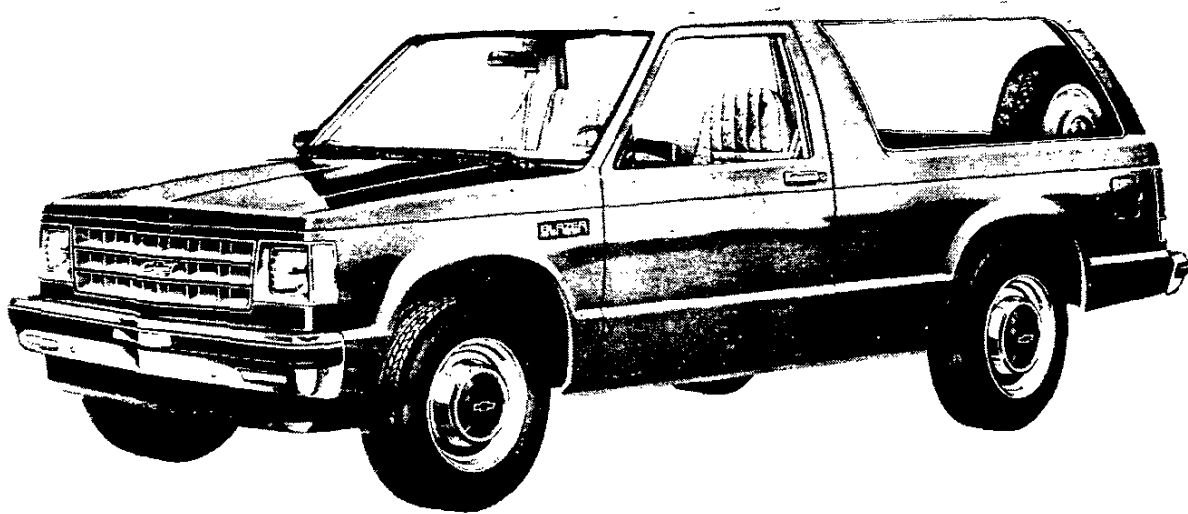
**S-10/15 BLAZER/JIMMY 2- & 4-WHEEL DRIVE**

**CAB & BODY FEATURES  
SEATING ARRANGEMENTS  
CAB DIMENSIONS  
COLOR & TRIM CHARTS  
TWO-TONES**

# S-10/15 BLAZER/JIMMY 2- & 4-WHEEL DRIVE

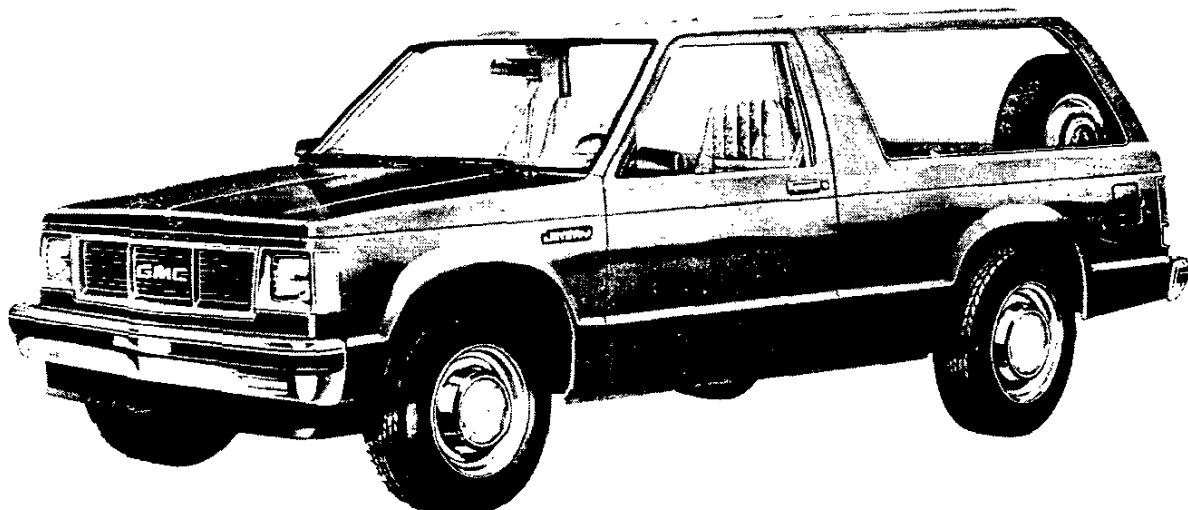
## STANDARD MODEL—FEATURES

The standard models include the following items as standard equipment



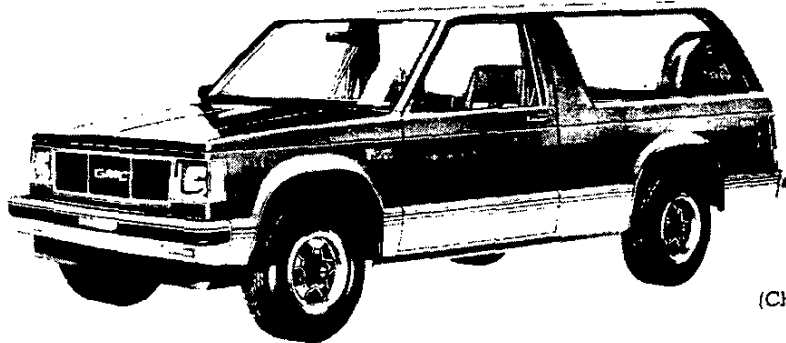
### EXTERIOR

- **Bumper:** Front and rear, chromed with black rub strips; front bumper incorporates parking lamps
- **Color:** See Interior and Exterior Color Selection Chart
- **Endgate-Liftglass:** Single pivot hinges on endgate and liftglass; latches on each side of endgate and at center for liftglass; gas cylinders attached to the black metal glass frame operate liftglass and provide check; cable checks on endgate; lift handle on glass. Center Key operated lock releases liftglass when turned to the left and endgate latches when turned to the right.
- **Glass:** Tinted, all windows
- **Grille:** Molded plastic; chrome and black; integral Chevrolet emblem/GMC letters at center of grille
- **Headlamp-Parking Lamp Bezels:** Molded plastic with chromed finish and black trim
- **Horn:** Single, electric, high-note
- **Hub Caps:** Bright metal with black trim
- **Keys:** Two-key system; with separate keys for ignition switch and door locks
- **Lettering, Endgate:** Black or silver decal on embossed Chevrolet/GMC letters depending on exterior color
- **Lights:**
  - Backup lamps: Two rear (integral with taillamps)
  - Combination parking/direction/hazard: Two front
  - Combination tail/stop/direction/hazard: Two rear
  - Headlamps: Two, rectangular
  - License plate lamp: Single rear
  - Side marker lamps with reflectors: Two front; two rear (integral with taillamps)
- **Mirrors:** RH and LH fixed arm with adjustable 6½" wide x 4" high aerodynamic heads; low gloss black finish. RH mirror is convex
- **Moldings:** Low-gloss black windshield and rear window
- **Nameplates:** Bright "Blazer/Jimmy" nameplates on front fenders near doors. 4-wheel-drive models have a "4X4" nameplate mounted below the fender nameplate
- **Wheels:** Painted argent
- **Windshield Wipers and Washers:** Electric, 2-speed wipers with low-gloss black finish on exposed metal portions; coordinated washer with fluidic oscillator at center of plenum inlet grille



## S-10/15 BLAZER/JIMMY 2- & 4-WHEEL DRIVE SPORT/GYPSY MODEL OPTION—RPO YC3

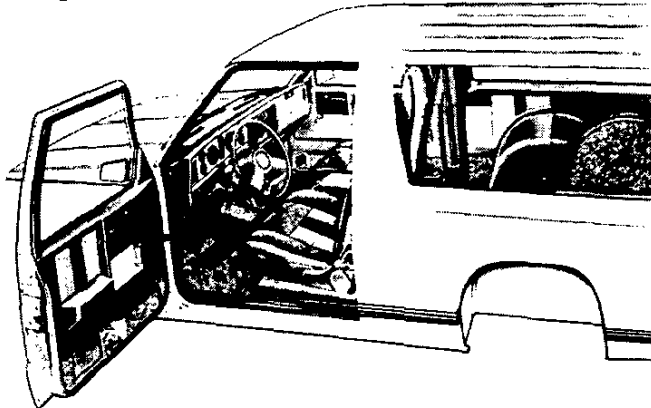
This option includes all items in the Tahoe/Sierra Classic model option plus the additions or substitutions listed below



GMC model shown  
(Chevrolet model available)

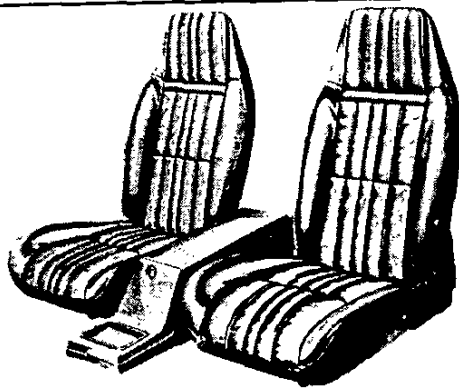
### EXTERIOR

- **Bright Appearance Items:**  
Delete bright wheel opening lip moldings
- **Bumpers:** Color-keyed to lower accent color, with black rub strips
- **Endgate Trim:** Black applique with bright "Chevrolet/GMC" lettering and trim
- **Two-Tone Paint:** ZY7 lower-accent paint
- **Wheels:** Styled; painted argent with black trim; includes bright wheel trim rings and black ornamental hubs
- **Wheel Opening Lip Moldings:** Black plastic



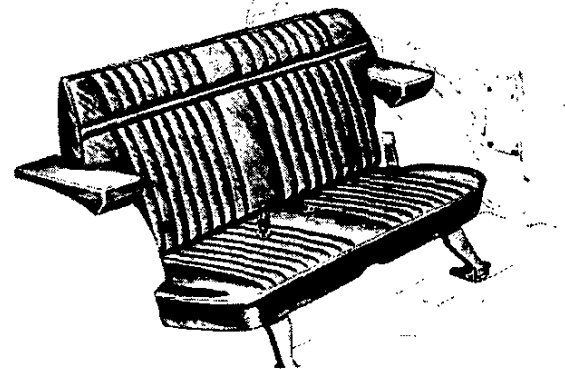
### INTERIOR

- **Bright Appearance Items:**  
"Sport/Gypsy" nameplate on stowage box door  
Trim on steering wheel
- **Console:**  
Color-keyed molded plastic with lockable stowage compartment; lock operated by door key
- **Seats:** High back, reclining buckets with sport cloth trim. Also available at extra cost: High Country sheepskin trim. See Interior and Exterior Color Selection Chart for color and trim availability
- **Steering Wheel:** Color-keyed sport type with bright shroud



### STANDARD FRONT BUCKET SEATS

Consists of two high back bucket-type seats with foam padding and folding backrests with inertia latches. RH seat includes easy entry feature. A lockable color-keyed plastic center console with spacious stowage compartment is available. This console is included when the Sport/Gypsy Model Option is ordered.

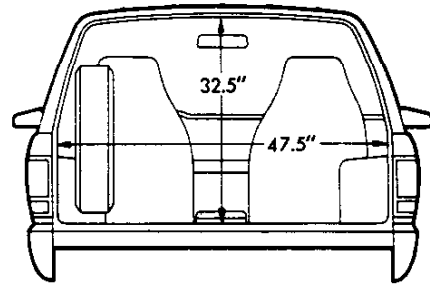
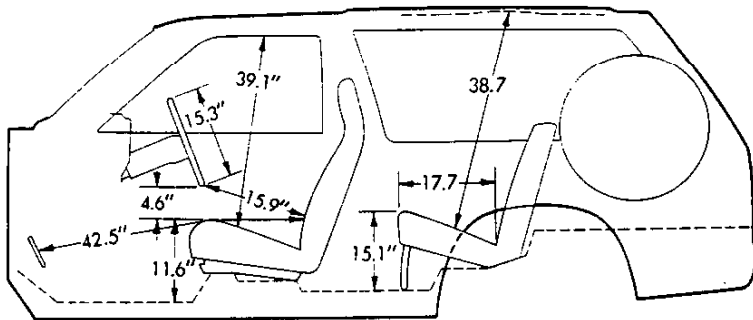


### REAR FOLDING SEAT

This two-passenger seat is available on all models, and seat trim matches front seats when Custom Vinyl or Special Custom cloth is ordered. When High Country Sheepskin front seats are ordered, rear folding seat trim is Saddle Tan Special Custom cloth. The seat cushion pivots forward and down and the seat back folds on to it to provide a flat floor over the entire load area. Armrests are included and attached to wheel housings. A zipper pocket is also included below armrests when Tahoe/Sierra Classic or Sport/Gypsy trim is ordered. Two seat belts included.

# S-10/15 BLAZER/JIMMY 2- & 4-WHEEL DRIVE

## DIMENSIONS\*

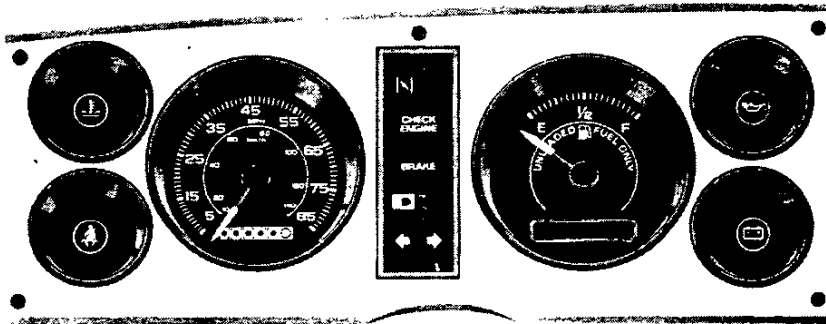


### Glass Area (sq in)

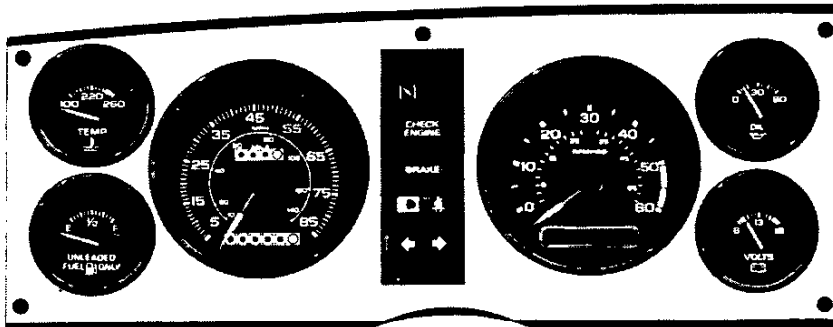
Windshield .....	1138.5	Rear side windows (each side) .....	752.0
Front side door window (each side) .....	409.5	Rear window .....	757.0

*\*All interior dimensions measured with front seat in rearmost position. Seat travel is 5"*

## INSTRUMENT CLUSTER



**Standard Cluster** with warning lights for engine temperature, generator, and oil pressure.



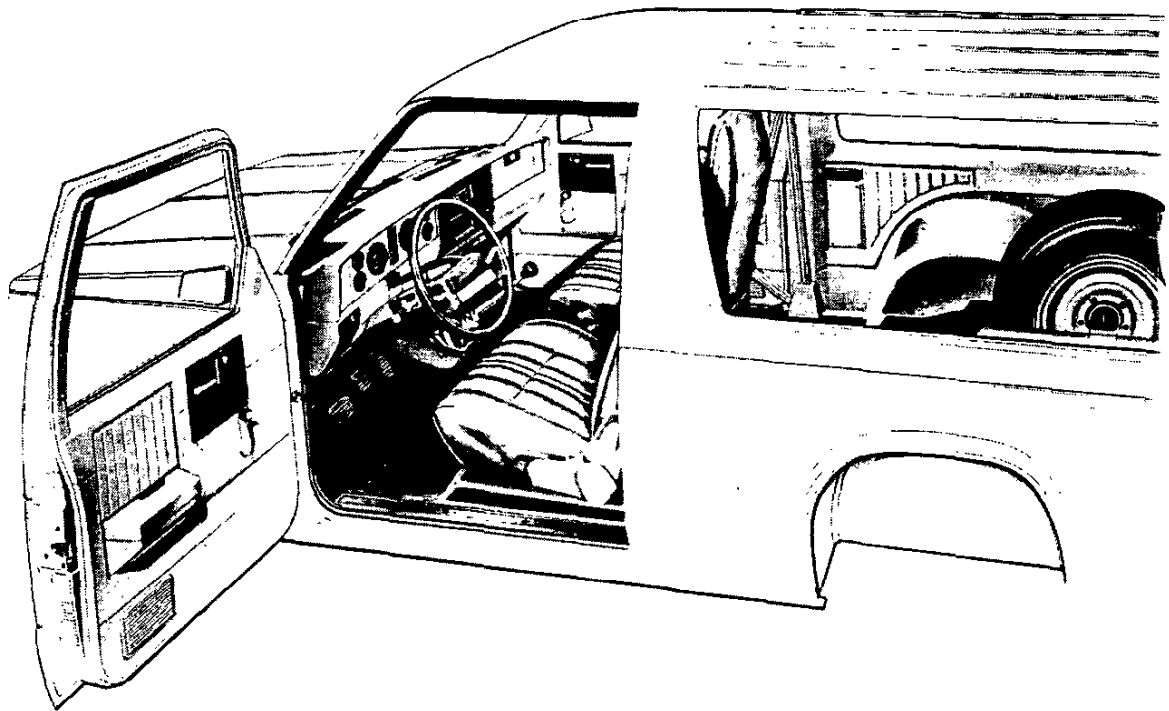
**Optional Cluster (RPO Z53)** with voltmeter, engine temperature gage, oil pressure gage and trip odometer. Included with tachometer (RPO U16) and in Tahoe/Sierra Classic model options (RPO YC2) and Sport/Gypsy model options (RPO YC3) along with bright brush-finished trim, as illustrated. Cluster faceplate for standard models has argent finish. When the optional tachometer is ordered, it replaces the regular fuel gage, and another fuel gage is added.

Optional tachometer also shown in illustration.

# S-10/15 BLAZER/JIMMY 2- & 4-WHEEL DRIVE

## STANDARD MODEL—FEATURES

The standard models include the following items as standard equipment



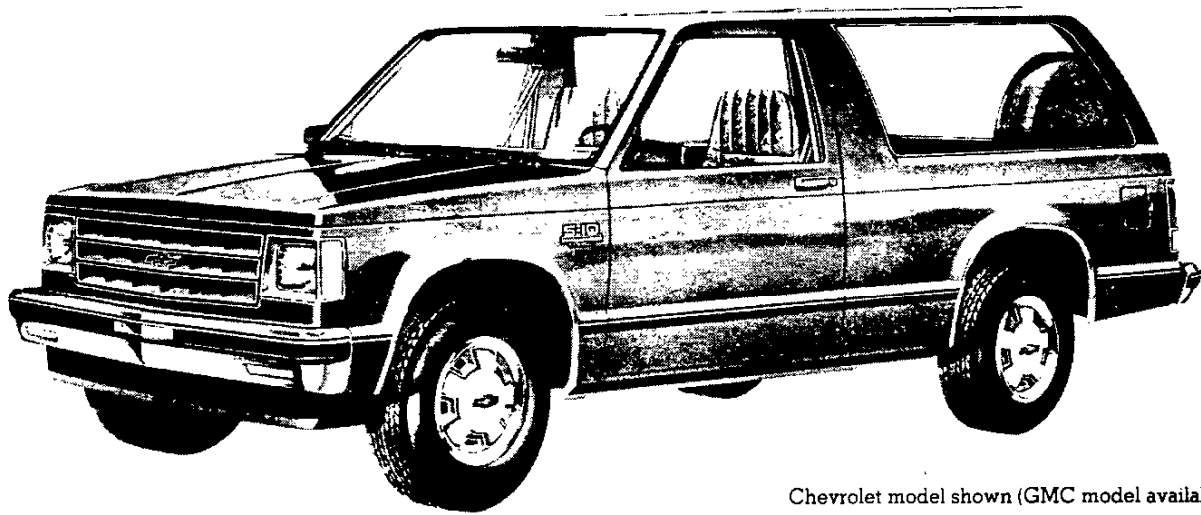
### INTERIOR

- **Armrests:** RH and LH padded; integral with door trim panels
- **Ashtray:** In middle of instrument panel
- **Cigar Lighter:** With ashtray light
- **Coat Hook:** RH side
- **Colors:**
  - Painted areas: Same as exterior primary color choice
  - Interior trim: Coordinated with seat trim color choice
- **Dome Lamps:** Front and rear; with bright trim
- **Door Sill Plates:** Door-opening protection and floor mat retention; full-length; black plastic. Color-keyed plastic endgate scuff plate
- **Door Trim Panels:** Color-keyed, embossed molded plastic with integral armrests; black trim plate in regulator area
- **Floor Covering:** Color-keyed rubber mat for entire floor area
- **Headliner:** Color-keyed; full coverage molded styrene full foam with color-keyed cloth cover. 4-wheel-drive models have a color-keyed grab handle mounted over RH door
- **Headlamp Warning Buzzer**
- **Heater and Defogger:** Deluxe outside air type with power center and outboard instrument panel vents and side window defoggers
- **Hood Lock Release:** Handle located on LH side of instrument panel
- **Instrument Cluster Bezel:** Argent finish with bright trim
- **Instruments:**
  - Gages: Speedometer, odometer and fuel
  - Switches: Main, for control of exterior lights, instrument cluster lights, and cab interior lights; combination steering column switch for direction signals by moving lever up and down, headlamp beams by moving lever fore and aft, and windshield wiper and washer by turning lever to wipe and pressing lever in to wash; hazard warning; heater fan; ignition with key-in warning buzzer
  - Warning lights: Seat belt, service-parking brake, direction/hazard signal, and high beam
- **Instrument Panel Control Knobs:** Soft black plastic (except heater and wiper-washer controls) with white graphic identification
- **Instrument Panel Pad:** Color-keyed, energy-absorbing foam type with injection molded plastic substrate
- **Insulation and Sound Deadening Material:** On dash (fire wall), under floor mat, spray deadener inside of doors, plugs or windshield pillars, on roof underside, and on headliner
- **Lights:** Instrument cluster, door-operated courtesy and dome lamps, and glove box lamp
- **Mirror, Rearview:** 10" prismatic with soft vinyl trim
- **Pillar Trim Moldings:** Color-keyed molded plastic on windshield pillars
- **Seats:** Driver and passenger, foam padded high back bucket type with leather grained custom vinyl trim. RH seat includes easy entry feature. See Interior and Exterior Color Selector Chart for color and trim availability
- **Seat Belts:** Driver and passenger non-detachable combination lap and shoulder belts with emergency-locking retractors. Seat belts are color-keyed with pushbutton type buckles
- **Spare Tire Mounting:** On LH side panel behind wheelhousing. Note: P235 full-size spare tire and wheel (available at extra cost) are stored flat at rear of body on floor.
- **Steering Wheel and Column:** 15 $\frac{1}{4}$ " deluxe color-keyed soft plastic wheel with 2 spokes; deluxe color-keyed energy absorbing steering column with anti-theft locking feature
- **Stowage Box:** In RH side of instrument panel; with bright key, operated lock and "S-10/S-15 Sierra" nameplate; lock operated by door key
- **Sunshades:** RH and LH padded; color-keyed
- **Tools:** Mechanical jack and wheel wrench behind seat on RH side

## S-10/15 BLAZER/JIMMY 2- & 4-WHEEL DRIVE

### TAHOE/SIERRA CLASSIC MODEL OPTION—RPO YC2

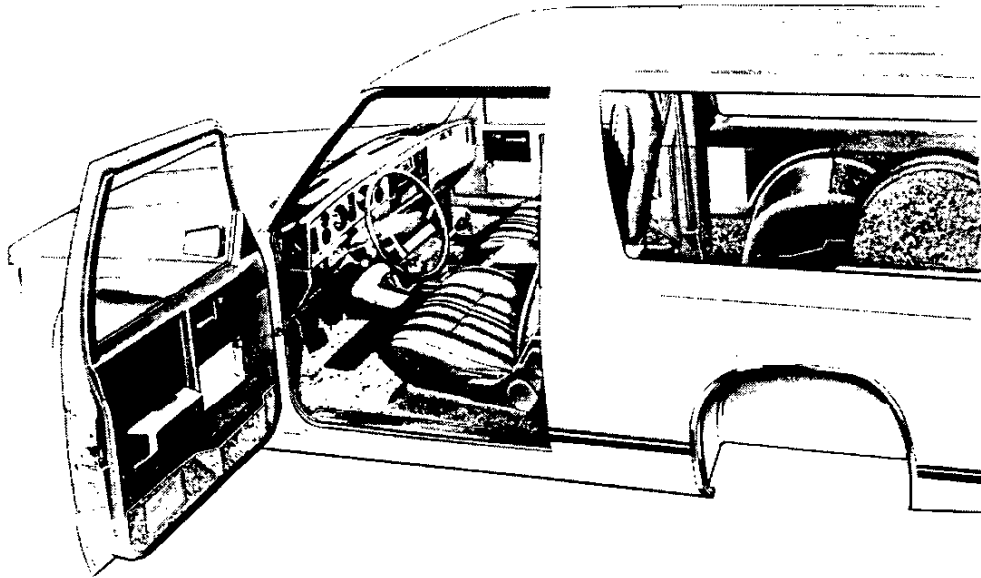
This option includes all standard model items plus the additions or substitutions listed below



Chevrolet model shown (GMC model available)

#### EXTERIOR

- **Bright Appearance Items:**
  - Body side molding trim
  - Bright wheel opening lip moldings
  - Wheel trim rings
- **Cab-to-Fender Insulators**
- **Door Handle Inserts:** Body color
- **Hood Insulator**
- **Moldings:** Black plastic body side moldings with bright insert and rear quarter window moldings
- **Endgate Trim:** Black applique with bright "Chevrolet/GMC" lettering and trim



#### INTERIOR

- **Bright Appearance Items:**
  - "Tahoe/Sierra Classic" nameplate on stowage box door
  - Trim on instrument cluster bezels
  - Trim on door trim panels
- **Door Trim Panels:** Sport cloth insert plus brush-finished applique in regulator area; carpeted lower insert with pocket, plus coin holder in LH door
- **Floor Covering:** Color-keyed carpeting for entire floor area
- **Instrument Cluster:** Voltmeter, oil pressure gage and engine temperature gage replace warning lamps; also includes trip odometer
- **Instrument Cluster Bezel:** Brushed aluminum with bright trim
- **Insulation and Sound Deadening Material:** On plenum panels (part of specific dash mat), under floor carpeting, extra-thick on headliner, on door trim panels, and on lower portion of instrument panel
- **Seats:** Choice of: 1) leather grained custom vinyl trim; 2) dual-tone woven special custom cloth/vinyl trim. Also available at extra cost: High Country sheepskin bucket seats. See Interior and Exterior Color Selection Chart for color and trim availability
- **Spare Tire Cover:** Color-keyed carpet and vinyl
- **Trim Panels and Moldings:** Color-keyed cowl kick panels; lower rear quarter and endgate panels and jack cover
- **Visor Mirror:** On RH sun visor



## S-10/15 BLAZER/JIMMY 2- & 4-WHEEL DRIVE INTERIOR AND EXTERIOR COLOR AVAILABILITY CHART

**Please Note:** Below are the interior trim color and exterior paint combinations recommended by Chevrolet/GMC. The only available primary/secondary exterior color combinations are those shown in the chart below, however, any available interior trim color may be ordered with one of these exterior color combinations if that particular combination is desired by the customer.

INTERIOR COLORS		Decor	Blue	Carmine	Charcoal	Saddle Tan						
<b>STANDARD INTERIOR</b> Custom Vinyl High Back Bucket Seats		Std.	XDD4	XRR4	XJJ4	XSS4						
<b>TAHOE/SIERRA CLASSIC</b> Custom Vinyl High Back Bucket Seats		YC2	XDD4	XRR4	XJJ4	XSS4						
Special Custom Cloth High Back Bucket Seats			HDD4	HRR4	HJJ4	HSS4						
High Country Sheepskin High Back Bucket Seats*						BSS4						
<b>SPORT/GYPSY (Reqs. ZY7 Paint)</b> Sport Cloth High Back Bucket Seats		YC3			SJJ4	SSS4	<b>ZY1 PAINT OPTIONAL STRIPING CHART RECOMMENDED COMBINATIONS</b> Additional stripe combinations are available except where N/A is shown, provided the dealer orders (D60) as verification (N. A. B84 YC2 or YC3)					
High Country Sheepskin High Back Bucket Seats*						BSS4						
EXTERIOR COLORS w/ZY1, ZY7 or ZY8 PAINT	Primary	Secondary	RECOMMENDED INTERIOR TRIM COLORS				Black 09A	Blue, Dark 28A	Gold 64A	Red 72A	Silver 17A	White 12A
<b>BLACK, MIDNIGHT</b>	19	19		X					X			
<b>BLACK, MIDNIGHT</b>	19	19			X					X		
<b>BLACK, MIDNIGHT</b>	19	19				X		X				
Black, Satin (N/A ZY8)	19	09		X	X	X						
Red, Apple	19	72		X	X							
Sand, Desert (Metallic)	19	64			X	X						
Silver (Metallic)	19	17		X	X							
White, Frost	19	12			X							
<b>BLUE, GALAXY (Metallic)</b>	28	28	X		X			N/A		X		
<b>BLUE, GALAXY (Metallic)</b>	28	28				X		N/A	X			
Black, Satin (N/A ZY8)	28	09	X		X							
Silver (Metallic)	28	17	X									
White, Frost	28	12	X									
<b>BLUE, LIGHT (Metallic)</b>	21	21	X		X			X				
Black, Satin (N/A ZY8)	21	09	X		X							
Blue, Galaxy (Metallic)	21	28	X		X							
White, Frost	21	12	X									
<b>BRONZE, INDIAN (Metallic)</b>	66	66			X		X					
<b>BRONZE, INDIAN (Metallic)</b>	66	66				X		X				
Black, Satin (N/A ZY8)	66	09			X	X						
Sand, Desert (Metallic)	66	64				X						
White, Frost	66	12				X						
<b>RED, APPLE</b>	72	72		X				X	N/A			
<b>RED, APPLE</b>	72	72			X		X		N/A			
Black, Satin (N/A ZY8)	72	09		X	X							
Silver (Metallic)	72	17		X	X							
White, Frost	72	12		X								
<b>RED, CINNAMON</b>	71	71			X		X		N/A			
<b>RED, CINNAMON</b>	71	71				X		X	N/A			
Black, Satin (N/A ZY8)	71	09			X	X						
Silver (Metallic)	71	17			X	X						
White, Frost	71	12			X	X						
<b>SAND, DESERT (Metallic)</b>	64	64			X	X	X	N/A				
Black, Satin (N/A ZY8)	64	09			X	X						
White, Frost	64	12			X	X						
<b>SILVER (Metallic)</b>	17	17	X				X			N/A		
<b>SILVER (Metallic)</b>	17	17		X					X	N/A		
<b>SILVER (Metallic)</b>	17	17			X		X			N/A		
Black, Satin (N/A ZY8)	17	09		X	X							
Blue, Galaxy (Metallic)	17	28	X									
Red, Apple	17	72		X								
White, Frost	17	12		X								
<b>TAN, DOESKIN</b>	61	61			X		X					
<b>TAN, DOESKIN</b>	61	61				X		X				
Black, Satin (N/A ZY8)	61	09			X							
White, Frost	61	12			X							
<b>WHITE, FROST</b>	12	12	X				X				N/A	
<b>WHITE, FROST</b>	12	12		X					X		N/A	
<b>WHITE, FROST</b>	12	12			X		X				N/A	
<b>WHITE, FROST</b>	12	12				X		X			N/A	
Black, Satin (N/A ZY8)	12	09			X							
Blue, Galaxy (Metallic)	12	28	X									
Red, Apple	12	72		X								
Sand, Desert (Metallic)	12	64				X						
Silver (Metallic)	12	17			X							

\*With YC2 Tahoe/Sierra Classic, rear seat trim is Special Custom Cloth; with YC3 Sport/Gypsy rear seat trim is Sport Cloth.

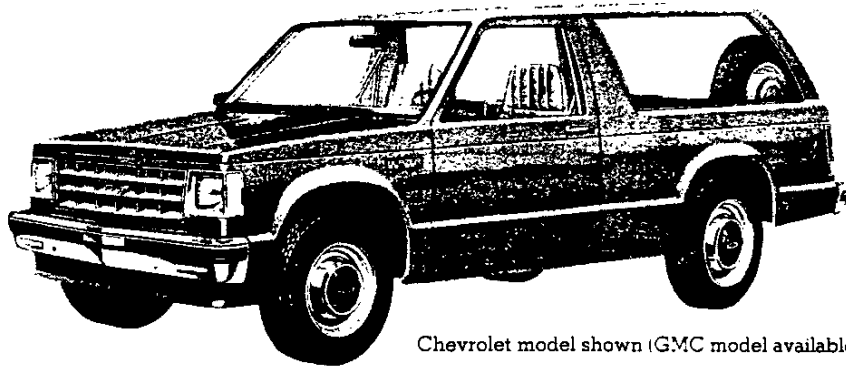
# S-10/15 BLAZER/JIMMY 2- & 4-WHEEL DRIVE

## SOLID AND TWO-TONE\* EXTERIOR COLOR COMBINATIONS

The application of paint for solid and two-tone exterior color combinations is shown below.

### SOLID COLOR

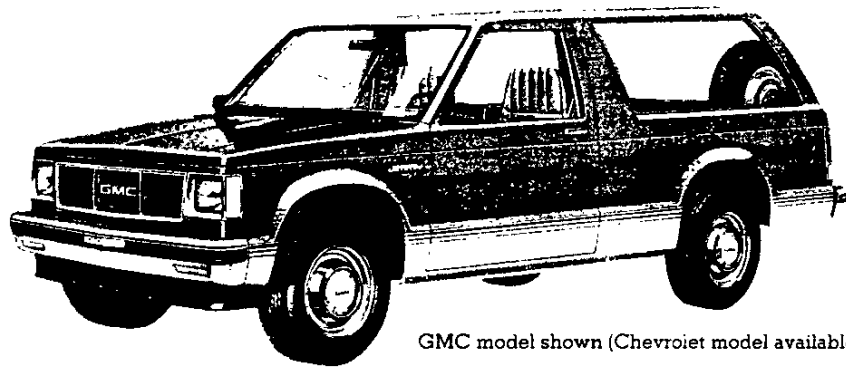
**Solid paint (ZY1)** is standard on all models (except Sport/Gypsy). All painted areas of the body and front end sheet metal are the same color. Tailgate lettering for base models is silver when Galaxy Blue, Indian Bronze, Midnight Black, or Apple Red exterior colors are specified and black for all other exterior colors.



Chevrolet model shown (GMC model available)

### SPORT TWO-TONE

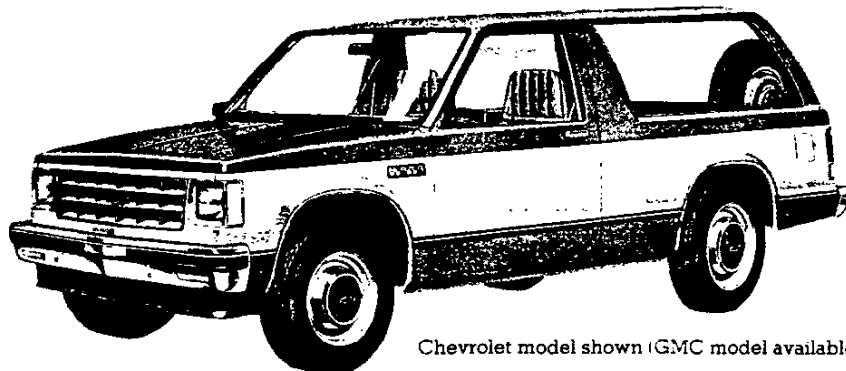
**Sport two-tone paint (ZY7)**, which provides a lower accent two-tone scheme, is available on base and Tahoe/Sierra Classic models, and is included when the Sport/Gypsy Model Option (YC3) is ordered. A wide, four stripe decal is included on base models, and is applied below the lower styling crease lines. The decal color matches the secondary paint choice, and is applied over the paint break line in such a way that the primary color paint shows through the clear areas to contrast with the decal colors. The primary color choice is applied to the areas above the bottom stripe of the decal, and the secondary color is applied to the areas below the decal. RPO B84 Body Side Moldings may be ordered with ZY7 on base models, if desired (at extra cost), and will replace the striping decal. Tailgate lettering for base models is silver when Galaxy Blue, Indian Bronze, Midnight Black, or Apple Red exterior colors are specified and black for all other exterior colors.



GMC model shown (Chevrolet model available)

### SPECIAL TWO-TONE

**Special two-tone paint (ZY8)**, which provides a mid-accent two-tone scheme, is available on base and Tahoe/Sierra Classic models and includes B84 body side and wheel opening moldings (except on Tahoe/Sierra Classic models where already included) which are applied below the lower styling crease lines. The areas below the molding and above the belt styling crease line are painted the primary paint color. The areas between the molding and the belt styling crease line are painted the secondary color. Tailgate lettering for base models is silver when Galaxy Blue, Indian Bronze, or Apple Red secondary exterior colors are specified and black for all other exterior colors.



Chevrolet model shown (GMC model available)

\*Optional at extra cost

## S-10 BLAZER 2- & 4-WHEEL DRIVE INTERIOR AND EXTERIOR COLOR AVAILABILITY CHART

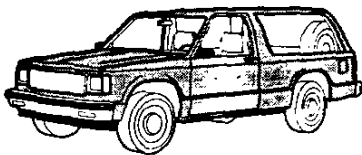
**Please Note:** Exterior and interior paint combinations shown in chart below are those recommended by Chevrolet. Any exterior color combination may be ordered with any available seat trim if the particular combination is desired by a customer. For special paint applications please contact the Zone Office.

INTERIOR COLORS		Decor	Blue	Carbide	Charcoal	Saddle Tan						
<b>STANDARD INTERIOR</b> Custom Vinyl High Back Bucket Seats		Std	XDD4	XRR4	XJJ4	XSS4						
<b>TAHOE</b> Custom Vinyl High Back Bucket Seats		YC2	XDD4	XRR4	XJJ4	XSS4						
Special Custom Cloth High Back Bucket Seats			HDD4	HRR4	HJJ4	HSS4						
High Country Sheepskin High Back Bucket Seats						BSS4						
<b>SPORT (Reds: ZY7 Paint)</b> Sport Cloth High Back Bucket Seats		YC3			SJJ4	SSS4	<b>ZY1 PAINT OPTIONAL STRIPING CHART RECOMMENDED COMBINATIONS</b> Additional stripe combinations are available except where N/A is shown, provided the dealer orders (D60) as verification (N/A B84, YC2 or YC3)					
High Country Sheepskin High Back Bucket Seats						BSS4						
EXTERIOR COLORS w/ ZY1, ZY7 or ZY8 PAINT	Primary	Secondary	RECOMMENDED INTERIOR TRIM COLORS				Black 09A	Blue, Dark 28A	Gold 84A	Red 72A	Silver 17A	White 12A
<b>BLACK, MIDNIGHT</b>	19	19		X					X			
<b>BLACK, MIDNIGHT</b>	19	19			X					X		
<b>BLACK, MIDNIGHT</b> Black Satin (N/A ZY8)	19	09		X	X	X		X				
<b>Red, Apple</b>	19	72		X	X							
<b>Sand, Desert (Metallic)</b>	19	64			X	X						
<b>Silver (Metallic)</b>	19	17		X	X							
<b>White, Frost</b>	19	12			X							
<b>BLUE, GALAXY (Metallic)</b>	28	28	X		X			N/A			X	
<b>BLUE, GALAXY (Metallic)</b>	28	28				X		N/A	X			
<b>Black Satin (N/A ZY8)</b>	28	09	X		X							
<b>Silver (Metallic)</b>	28	17	X									
<b>White, Frost</b>	28	12	X									
<b>BLUE, LIGHT (Metallic)</b>	21	21	X		X				X			
<b>Black Satin (N/A ZY8)</b>	21	09	X		X							
<b>Blue, Galaxy (Metallic)</b>	21	28	X		X							
<b>White, Frost</b>	21	12	X									
<b>BRONZE, INDIAN (Metallic)</b>	66	66			X		X					
<b>BRONZE, INDIAN (Metallic)</b>	66	66				X		X				
<b>Black Satin (N/A ZY8)</b>	66	09			X	X						
<b>Sand, Desert (Metallic)</b>	66	64				X						
<b>White, Frost</b>	66	12				X						
<b>RED, APPLE</b>	72	72		X				X		N/A		
<b>RED, APPLE</b>	72	72			X		X			N/A		
<b>Black Satin (N/A ZY8)</b>	72	09		X	X							
<b>Silver (Metallic)</b>	72	17		X	X							
<b>White, Frost</b>	72	12		X								
<b>RED, CINNAMON</b>	71	71			X		X			N/A		
<b>RED, CINNAMON</b>	71	71				X		X		N/A		
<b>Black Satin (N/A ZY8)</b>	71	09			X	X						
<b>Silver (Metallic)</b>	71	17			X	X						
<b>White, Frost</b>	71	12			X	X						
<b>BAND, DESERT (Metallic)</b>	84	64			X	X	X		N/A			
<b>Black Satin (N/A ZY8)</b>	84	09			X	X						
<b>White, Frost</b>	84	12			X							
<b>SILVER (Metallic)</b>	17	17	X					X			N/A	
<b>SILVER (Metallic)</b>	17	17		X					X		N/A	
<b>SILVER (Metallic)</b>	17	17			X		X				N/A	
<b>Black Satin (N/A ZY8)</b>	17	09		X	X							
<b>Blue, Galaxy (Metallic)</b>	17	28	X									
<b>Red, Apple</b>	17	72		X								
<b>White, Frost</b>	17	12			X							
<b>TAN, DOESKIN</b>	61	61			X		X					
<b>TAN, DOESKIN</b>	61	61				X						
<b>Black Satin (N/A ZY8)</b>	61	09			X			X				
<b>White, Frost</b>	61	12			X							
<b>WHITE, FROST</b>	12	12	X					X			N/A	
<b>WHITE, FROST</b>	12	12		X					X		N/A	
<b>WHITE, FROST</b>	12	12			X		X				N/A	
<b>WHITE, FROST</b>	12	12				X		X			N/A	
<b>Black Satin (N/A ZY8)</b>	12	09			X							
<b>Blue, Galaxy (Metallic)</b>	12	28	X									
<b>Red, Apple</b>	12	72		X								
<b>Sand, Desert (Metallic)</b>	12	64				X						
<b>Silver (Metallic)</b>	12	17			X							

\*With YC2 Tahoe rear seat trim is Special Custom Cloth, with YC3 Sport rear seat trim is Sport Cloth

### Paint Applications

#### SOLID PAINT—ZY1



#### SPORT TWO-TONE PAINT—ZY7

(Includes body side stripe that matches secondary color w/o YC3 or YC2)

Primary Body Color

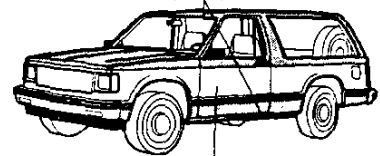


Secondary Body Color

#### SPECIAL TWO-TONE PAINT—ZY8

(Includes B84 Body Side and Bright Wheel Opening Moldings)

Primary Body Color



Secondary Body Color

**S-10 BLAZER**  
REFER WEEKLY STOPS / LATEST UPDATE

**MODEL AND BODY**

Description	Model No	Body	Wheelbase
<b>2-WHEEL-DRIVE GASOLINE MODELS</b>			
#Tailgate .....	CS10516	E55	100.5"

Description	Model No	Body	Wheelbase
<b>4-WHEEL-DRIVE GASOLINE MODELS</b>			
#Tailgate .....	CT10516	E55	100.5"

#Reqs N40 Power Steering or N51  
Power Steering Not Desired And AM7 Folding Seat  
or YG4 Seat Not Desired

**EMISSIONS (MUST ORDER ONE)**

- \_\_\_\_\_ NA5 Standard Emission Equipment
- \_\_\_\_\_ NA6 High Altitude Emission Equipment
- \_\_\_\_\_ YF5 California Emission Requirements

**✓ POWER TEAMS (MUST ORDER ENGINE, TRANSMISSION AND REAR AXLE)**

ENGINE	TRANSMISSION			AXLES		
	4-SP	5-SP	AUTO	3.42	3.73	4.11
<b>W/NA5 STANDARD EMISSION EQUIPMENT</b>						
<b>—S10516</b>						
LQ2 L4 2.0 Liter 2BBL	MM4	MM5		—	GQ1	H04
LR2 V6 2.8 Liter 2BBL (Reqs N40 Steering)	MM4			GQ1	GT4	—
		MM5		—	GQ1	—
			MX0	GQ1	%GT4	—
<b>—T10516</b>						
LQ2 L4 2.0 Liter 2BBL	MM4	MM5		—	—	GQ1
LR2 V6 2.8 Liter 2BBL (Reqs N40 Steering)	MM4			*GQ1	GT4	—
		MM5		—	GQ1	—
			MX0	*GQ1	GT4	#H04
<b>W/NA6 HIGH ALTITUDE EMISSION EQUIPMENT</b>						
<b>—S10516</b>						
LQ2 L4 2.0 Liter 2BBL	MM4	MM5		—	—	GQ1
LR2 V6 2.8 Liter 2BBL (Reqs N40 Steering)	MM4	MM5	MX0	—	GQ1	—
<b>—T10516</b>						
LQ2 L4 2.0 Liter 2BBL	MM4	MM5		—	—	GQ1
LR2 V6 2.8 Liter 2BBL (Reqs N40 Steering)	MM4	MM5	MX0	—	*GQ1	#H04
<b>W/YF5 CALIFORNIA EMISSION REQUIREMENTS</b>						
<b>—S10516</b>						
LR1 L4 1.9 Liter 2BBL	MM4	MM5		GU6	GQ1	—
LR2 V6 2.8 Liter 2BBL (Reqs N40 Steering)	MM4			GQ1	GT4	—
		MM5		—	GQ1	—
			MX0	GQ1	%GT4	—
<b>—T10516</b>						
LR1 L4 1.9 Liter 2BBL	MM4	MM5		—	—	GQ1
LR2 V6 2.8 Liter 2BBL (Reqs N40 Steering)	MM4			*GQ1	GT4	—
		MM5		—	GQ1	\$ H04
			MX0	*GQ1	GT4	#H04

%Reqs Z82 Trailing  
\*N/A P235/75R15 Tires  
\$Reqs P235/75R15 Tires  
#Reqs P235/75R15 Tires and Z82 Trailing

**FEATURE OPTION:**

YC3 Sport Equipment (Reqs ZY7 Paint) (Incls Lower Body Color Front and Rear Bumpers w/Rub Strips, Reclining Seat Backs and Console, Gage Package with Trip Odometer, Spare Tire Cover, Visor Mirror, Body Side and Black Wheel Opening Mdlgs) (Incls Styled Wheels on S10) (Incls Wheel Trim Rings on T10)

**QUICK-SPEC**

EMISSION, ENGINE, TRANSMISSION, AXLE AND TIRE MUST BE ENTERED AS ADDITIONS TO THESE QUICK-SPECS.		B	B	B
		S	S	S
		A	A	A
		1.	2	3
Sport Equipment	YC3	x	x	x
Air Conditioning	C60	x	x	x
Body: Standard	E55	x	x	x
Mirrors: Bright	D45	x	x	x
Radio: AM	U63	x	N/I	N/I
Seat: Rear, Folding	AM7	x	x	x
Steering: Power	N40	x	x	x
Steering Wheel: Comfortilt	N33	x	x	x
Tank, Fuel	NK2	x	x	x
Battery: Heavy Duty	UA1	x	x	
Floor Coverings: Front	B32	x	x	
Floor Coverings: Rear	B33	x	x	
Radio: Electronically Tuned AM/FM Stereo	UU9	x	N/I	
Speed Control, Electronic	K34	x	x	
Tailgate Window Release: Power	AU6	x	x	
Windshield Wiper System	CD4	x	x	
Defogger, Rear Window	C49		x	
Headlamps, Halogen	TT4		x	
Lamp, Engine Compartment	U26		x	
Operating Convenience Pkg	ZQ2		x	
Radio: Electronically Tuned AM/FM Stereo & Stereo Cassette Tape w/Clock	UU7		x	
Shield, Transfer Case (T10 Only)	NY7		x	
Speakers: Premium Dual Rear	U66		x	

**PLEASE REVIEW OPTION RESTRICTIONS BEFORE ORDERING**

Q.S	OPTION	
(1)	C60	<b>AIR CONDITIONING:</b> (Reqs N40 Steering) (w/C49 Defogger N/A LR1 Eng) (w/o C49 Defogger inclcs K81 Gen) (w/o V02 Cooling inclcs V01 Cooling)
	G80	<b>AXLE, REAR:</b> Locking Differential
(2)	UA1	<b>BATTERY:</b> Heavy Duty, 515 Cold Cranking Amps Delco Freedom (Incl w/V10 Cold Climate)
	V28	<b>BUMPER EQUIPMENT:</b> Bumper Guards, Front only, Black
	V55	<b>CARRIER, LUGGAGE</b>
	Z71	<b>CHASSIS EQUIPMENT:</b> Off Road Package (T10 Only) (N/A F51 Shocks) (Reqs QEB Tires) (Incls NY7 Shield, V76 Tow Hooks and ZK5 Spare)
	UE8	<b>CLOCK:</b> Electronic Digital (Reqs UU9 or U69 Radio)
	V10	<b>COLD-CLIMATE PACKAGE:</b> (Incls K81 Gen and UA1 Battery)
	KC4	<b>COOLING SYSTEM:</b> Heavy Duty —Engine Oil Cooler (S10 only) (Reqs LR2 Eng, MX0 Trans and V01 or V02 Cooling)
	V01	—Radiator (N/A V02 Cooling) (Incl w/C60 Air)
	V02	—Radiator and Transmission Oil Cooler (Reqs LR2 Eng and MX0 Trans)
	C51	<b>DEFLECTOR, AIR</b>
(3)	C49	<b>DEFOGGER, REAR WINDOW:</b> Electric (w/o C60 Air Incls K81 Gen)
	AU3	<b>DOOR LOCK SYSTEM, POWER:</b> Side Door (Incl w/ZQ2 Conv Pkg)
		<b>FLOOR COVERING:</b> Mats, Color-Keyed Floor
(2)	B32	—Front
(2)	B33	—Rear
	U16	<b>GAGE, TACHOMETER</b>
	K81	<b>GENERATOR:</b> 66-Amp Delcotron (N/A C60 Air w/C49 Defogger) (Incl w/C60 Air, V10 Cold Climate Pkg or C49 Defogger)
		<b>GLASS:</b>
	AA3	—Deep Tinted w/Light Tinted Rear Window (N/A AJ1 Glass)
	AJ1	—Deep Tinted

**PLEASE REVIEW OPTION RESTRICTIONS BEFORE ORDERING**

Q.S	OPTION	
(3)	TT4	<b>HEADLAMPS, HALOGEN</b>
	K05	<b>HEATER, ENGINE BLOCK</b>
(3)	U26	<b>LAMP:</b> Engine Compartment
		<b>MIRRORS:</b> Exterior, Below-Eye-Line Type
	D44	—Black
(1)	D45	—Bright
	B93	<b>MOLDINGS:</b> Door Edge Guard
(3)	ZQ2	<b>OPERATING CONVENIENCE PACKAGE:</b> (Incls AU3 Door Locks and A31 Windows)
	B3W	<b>PRELIMINARY PRICE INFORMATION</b>
		<b>RADIO EQUIPMENT:</b>
(1)	U63	—AM Radio
	U69	—AM/FM Radio
(2)	UU9	—Electronically Tuned AM/FM Stereo Radio
(3)	UU7	—Electronically Tuned AM/FM Stereo Radio & Stereo Cassette Tape w/Clock
	UM6	—Electronically Tuned AM/FM Stereo Radio & Stereo Cassette Tape w/Seek-Scan and Clock (Incls U66 Speakers)
(3)	U66	—Speakers, Premium Dual Rear (Reqs UU7 or UU9 Radio) (Incl w/UM6 Radio)
		<b>SEATING:</b> (MUST ORDER AM7 or YG4 Seat)
(1)	AM7	—Rear, Folding 2-Passenger
	YG4	—Rear Seat Not Desired (N/A AM7 Seat)
(3)	NY7	<b>SHIELD, TRANSFER CASE:</b> (T10 Only) (Incl w/Z71 Chassis Equip)
	F51	<b>SHOCK ABSORBERS:</b> Front and Rear, Heavy-Duty (N/A Z71 Chassis Equip) (Incl w/F60 Susp)
		<b>SPARE TIRE, FULL SIZE:</b> (Replaces Standard Compact Spare)
	ZK4	—Highway (N/A QJL, QJT or QEB Tires)
	ZK5	—On-Off Road (S10 Reqs Q1C, QJT or QJL Tires) (T10 Reqs QJL, QJT or QEB Tires) (Incl w/Z71 Chassis Equip)
(2)	K34	<b>SPEED CONTROL, ELECTRONIC</b>
		<b>STEERING:</b>
	N51	—Power Not Desired
(1)	N40	—Power
(1)	N33	<b>STEERING WHEEL:</b> Comfortilt
	F60	<b>SUSPENSION EQUIPMENT:</b> Front, Heavy-Duty (T10 only) (N/A Z71 Chassis Equip) (Incls F51 Shocks) (Recommended for snowplow type usage only)
(2)	AU6	<b>TAILGATE WINDOW RELEASE, POWER</b>
(1)	NK2	<b>TANK, FUEL:</b> Approx. 20 Gallons
		<b>TIRES:</b> (B/W: Blackwall, W/W: Whitewall, W/L: White Lettered) (Incls Compact Spare Tire)
		Highway Fiberglass Belted Radial Ply (Front and Rear)
	QYP	—P195/75R-15 B/W (Base)
	QYQ	—P195/75R-15 W/W
		Highway Steel Belted Radial Ply (Front and Rear)
	QJU	—P205/75R-15 B/W
	QMC	—P205/75R-15 W/L
		Steel Belted Radial Ply (Front-Highway and Rear On-Off Road) (CS10516 only)
	Q1C	—P205/75R-15 B/W
		On-Off Road Steel Belted Radial Ply (Front and Rear) (N/A ZK4 Spare)
	QJT	—P205/75R-15 B/W
	QJL	—P205/75R-15 W/L
	QEB	—P235/75R-15 W/L (CT10516 Only) (See Power Teams Chart For Axle Restrictions) (Reqs LR2 Eng and ZK5 Spare)
	V76	<b>TOWING DEVICE:</b> Two Front Tow Hooks (T10 only) (Incl w/Z71 Chassis Equip)
	VR2	<b>TRAILER HITCH:</b> Deadweight Type (N/A Z82 Trailing) (Incl w/Z72 Trailing)
	272	<b>TRAILERING PACKAGE:</b> (N/A Z82 Trailing) (Reqs LR2 Eng, MX0 Trans and V01 or V02 Cooling or C60 Air) (Incls VR2 Hitch)
	Z82	<b>TRAILERING SPECIAL EQUIPMENT:</b> Heavy Duty (Reqs LR2 Eng, MX0 Trans, V02 Trans Cooling, N40 Steering and 3.73 or 4.11 Rear Axle) (T10 w/QEB Tires Reqs 4. Rear Axle) (w/o C60 Air, V10 Cold Climate Pkg or C49 Defogger Reqs K81 Gen) (Refer Trailering Guide)
	N90	<b>WHEELS:</b> Aluminum, Cast (T10 only) (N/A QYP or QYQ P195 Tires)
	A31	<b>WINDOWS:</b> Power, Side Door (Incl w/ZQ2 Conv Pkg)
(2)	CD4	<b>WINDSHIELD WIPER SYSTEM:</b> Intermittent

# S-10 BLAZER - TAHOE

## FEATURE OPTION:

— YC2 Tahoe Equipment (Incls Visor Mirror, Gage Package with Trip Odometer, Spare Tire Cover, Wheel Trim Rings and Body Side and Bright Wheel Opening Mldgs)

## QUICK-SPEC

EMISSION, ENGINE, TRANSMISSION, AXLE AND TIRE MUST BE ENTERED AS ADDITIONS TO THESE QUICK-SPECS	B	B	B	
	T	T	T	
	A	A	A	
	1	2	3	
Tahoe Equipment	YC2	x	x	x
Air Conditioning	C60	x	x	x
Body: Standard	E55	x	x	x
Console	D55	x	x	x
Mirrors: Bright	D45	x	x	x
Radio: AM	U63	x	N/1	N/1
Seat: Rear, Folding	AM7	x	x	x
Steering: Power	N40	x	x	x
Steering Wheel: Comfortilt	N33	x	x	x
Tank, Fuel	NK2	x	x	x
Battery: Heavy Duty	UA1	x	x	
Floor Coverings: Front	B32	x	x	
Floor Coverings: Rear	B33	x	x	
Radio: Electronically Tuned AM/FM Stereo	UU9	x	N/1	
Speed Control, Electronic	K34	x	x	
Tailgate Window Release: Power	AU6	x	x	
Windshield Wiper System	CD4	x	x	
Defogger, Rear Window	C49		x	
Headlamps, Halogen	TT4		x	
Lamp, Engine Compartment	U26		x	
Operating Convenience Pkg	ZQ2		x	
Radio: Electronically Tuned AM/FM Stereo & Stereo Cassette Tape w/Clock	UU7		x	
Shield: Transfer Case (T10 Only)	NY7		x	
Speakers: Premium Dual Rear	U66		x	

## PLEASE REVIEW OPTION RESTRICTIONS BEFORE ORDERING

Q-S	OPTION
(1)	C60 AIR CONDITIONING: (Reqs N40 Steering) (w/C49 Defogger N/A LR1 Eng) (w/o C49 Defogger Incls K81 Gen) (w/o V02 Cooling Incls V01 Cooling)
(2)	UA1 AXLE, REAR: Locking Differential
	VE6 BATTERY: Heavy Duty, 515 Cold Cranking Amps Delco Freedom (Incl w/V10 Cold Climate)
	BUMPER EQUIPMENT: Bumpers, Front and Rear Color-Keyed w/Rub Strips (Reqs ZY7 or ZY8 Paint)
	V28 Bumper Guards, Front only, Black
	V55 CARRIER, LUGGAGE
	Z71 CHASSIS EQUIPMENT: Off Road Package (T10 only) (N/A F51 Shocks) (Reqs QEB Tires) (Incls NY7 Shield, ZK5 Spare and V76 Tow Hooks)
	UE8 CLOCK: Electronic Digital (Reqs UU9 or U69 Radio)
	V10 COLD CLIMATE PACKAGE: (Incls K81 Gen and UA1 Battery)
(1)	D55 CONSOLE
	KC4 COOLING SYSTEM: Heavy Duty —Engine Oil Cooler (S10 only) (Reqs LR2 Eng, MX0 Trans and V01 or V02 Cooling)
	V01 —Radiator (N/A V02 Cooling) (Incl w/C60 Air)
	V02 —Radiator and Transmission Oil Cooler (Reqs LR2 Eng and MX0 Trans)
(3)	C51 DEFLECTOR, AIR
	C49 DEFOGGER, REAR WINDOW: Electric (w/o C60 Air Incls K81 Gen)
	AU3 DOOR LOCK SYSTEM, POWER: Side Door (Incl w/ZQ2 Conv Pkg)
(2)	B32 FLOOR COVERING: Mats, Color-Keyed Floor —Front
(2)	B33 —Rear
	U16 GAGE, TACHOMETER
	K81 GENERATOR: 66-Amp Delcotron (N/A C60 Air w/C49 Defogger) (Incl w/C60 Air, V10 Cold Climate Pkg or C49 Defogger)
	GLASS: —Deep Tinted w/Light Tinted Rear Window (N/A AJ1 Glass)
	AJ1 —Deep Tinted
(3)	TT4 HEADLAMPS, HALOGEN
	K05 HEATER, ENGINE BLOCK

## PLEASE REVIEW OPTION RESTRICTIONS BEFORE ORDERING

Q-S	OPTION
(3)	U26 LAMP: Engine Compartment
	MIRRORS: Exterior, Below Eye-Line Type.
	D44 —Black
(1)	D45 —Bright
	MOLDINGS:
	B93 —Door Edge Guard
	B74 —Wheel Opening, Black
(3)	ZQ2 OPERATING CONVENIENCE PACKAGE: (Incls AU3 Door Locks and A31 Windows)
	B3W PRELIMINARY PRICE INFORMATION
(1)	U63 RADIO EQUIPMENT:
	U69 —AM Radio
(2)	UU9 —AM/FM Radio
(3)	UU7 —Electronically Tuned AM/FM Stereo Radio & Stereo Cassette Tape w/Clock
	UM6 —Electronically Tuned AM/FM Stereo Radio & Stereo Cassette Tape w/Seek-Scan and Clock (Incls U66 Speakers)
(3)	U66 —Speakers, Premium Dual Rear (Reqs UU7 or UU9 Radio) (Incl w/UM6 Radio)
(1)	AM7 SEATING: (MUST ORDER AM7 or YG4 Seat)
	YG4 —Rear, Folding, 2-Passenger
	A78 —Rear Seat Not Desired (N/A AM7 Seat)
(3)	NY7 SEAT EQUIPMENT: Seat Backs, Reclining
	F51 SHIELD, TRANSFER CASE: (T10 Only) (Incl w/Z71 Chassis Equip)
	ZK4 SHOCK ABSORBERS: Front and Rear, Heavy Duty (N/A Z71 Chassis Equip) (Incl w/F60 Susp)
	ZK5 SPARE TIRE, FULL SIZE: (Replaces Standard Compact Spare)
	—Highway (N/A QJL, QJT or QEB Tires)
	—On-Off Road (S10 Reqs Q1C, QJL or QJT Tires) (T10 Reqs QEB, QJT or QJL Tires) (Incl w/Z71 Chassis Equip)
(2)	K34 SPEED CONTROL, ELECTRONIC
	STEERING:
	N51 —Power Not Desired
	N40 —Power
	N33 STEERING WHEEL: Comfortilt
	F60 SUSPENSION EQUIPMENT: Front, Heavy-Duty (T10 only) (N/A Z71 Chassis Equip) (Incls F51 Shocks) (Recommended for snowplow type usage only)
(2)	AU6 TAILGATE WINDOW RELEASE, POWER
(1)	NK2 TANK, FUEL: Approx. 20 Gallons
	QYP TIRES: (B/W: Blackwall, W/W: Whitewall, W/L: White Lettered) (Incls Compact Spare Tire)
	QYQ Highway Fiberglass Belted Radial Ply (Front and Rear)
	—P195/75R-15 B/W (Base)
	—P195/75R-15 W/W
	QJU Highway Steel Belted Radial Ply (Front and Rear)
	—P205/75R-15 B/W
	—P205/75R-15 W/L
	QMC Steel Belted Radial Ply (Front-Highway and Rear On-Off Road) (CS10516 only)
	—P205/75R-15 B/W
	Q1C On-Off Road Steel Belted Radial Ply (Front and Rear) (N/A ZK4 Spare)
	—P205/75R-15 B/W
	—P205/75R-15 W/L
	QEB —P235/75R-15 W/L (CT10516 Only) (See Power Teams Chart for Axle Restrictions) (Reqs LR2 Eng and ZK5 Spare)
	V76 TOWING DEVICE: Two Front Tow Hooks (T10 only) (Incl w/Z71 Chassis Equip)
	VR2 TRAILER HITCH: Deadweight Type (N/A Z82 Trailing) (Incl w/Z72 Trailing)
	Z72 TRAILERING PACKAGE: (N/A Z82 Trailing) (Reqs LR2 Eng, MX0 Trans and V01 or V02 Cooling or C60 Air) (Incls VR2 Hitch)
✓	Z82 TRAILERING SPECIAL EQUIPMENT: Heavy Duty (Reqs LR2 Eng, MX0 Trans, V02 Trans Cooling, N40 Steering and 3.73 or 4.11 Rear Axle) (T10 w/QEB Tires Reqs 4.11 Rear Axle) (w/o C60 Air, C49 Defogger or V10 Cold Climate Reqs K81 Gen) (Refer Trailering Guide)
	WHEELS:
	N90 —Aluminum, Cast (T10 Only) (N/A QYP or QYQ P195 Tires)
	ZJ7 —Styled (S10 Only)
✓	A31 WINDOWS: Power, Side Door (Incl w/ZQ2 Conv Pkg)
(2)	CD4 WINDSHIELD WIPER SYSTEM: Intermittent

# S-10 BLAZER

(N/A YC2 or YC3 PACKAGES)

## QUICK-SPEC

EMISSION, ENGINE, TRANSMISSION, AXLE AND TIRE MUST BE ENTERED AS ADDITIONS TO THESE QUICK-SPECS.				
	B	B	B	
	A	A	A	
	1	2	3	
Body: Standard	E55	x	x	x
Console	D55	x	x	x
Gages: Volt, Temp and Oil Pressure w/Trip Odometer	Z53	x	x	x
Radio: AM	U63	x	N/I	N/I
Seat: Rear, Folding	AM7	x	x	x
Steering: Power	N40	x	x	x
Tank, Fuel	NK2	x	x	x
Air Conditioning	C60	x	x	
Battery: Heavy Duty	UA1	x	x	
Mirrors: Bright	D45	x	x	
Radio: Electronically Tuned AM/FM Stereo	UU9	x	N/I	
Steering Wheel: Comfortilt	N33	x	x	
Moldings: Body Side and Wheel Opening	B84	x		
Operating Convenience Pkg	ZQ2	x		
Radio: Electronically Tuned AM/FM Stereo & Stereo Cassette Tape w/Clock	UU7	x		
Shield: Transfer Case (T10 Only)	NY7	x		
Speed Control, Electronic	K34	x		
Tailgate Window Release: Power	AU6	x		

PLEASE REVIEW OPTION RESTRICTIONS BEFORE ORDERING

Q-S	OPTION	
(2)	C60	<b>AIR CONDITIONING:</b> (Reqs N40 Steering) (w/C49 Defogger N/A LR1 Eng) (w/o C49 Defogger Incls K81 Gen) (w/o V02 Cooling Incls V01 Cooling)
(2)	G80 UA1	<b>AXLE, REAR:</b> Locking Differential <b>BATTERY:</b> Heavy Duty, 515 Cold Cranking Amps Delco Freedom (Incl w/V10 Cold Climate)
	VE6	<b>BUMPER EQUIPMENT:</b> Bumpers, Front and Rear Color-Keyed w/Rub Strips (Reqs ZY7 or ZY8 Paint)
	V28	Bumper Guards, Front only, Black
	V55	<b>CARRIER, LUGGAGE</b>
	Z71	<b>CHASSIS EQUIPMENT:</b> Off Road Package (T10 Only) (N/A F51 Shocks) (Reqs QEB Tires) (Incls NY7 Shield, V76 Tow Hooks, ZK5 Spare and P06 Trim Rings)
	UE8 V10	<b>CLOCK:</b> Electronic Digital (Reqs UU9 or U69 Radio) <b>COLD CLIMATE PACKAGE:</b> (Incls K81 Gen and UA1 Battery)
(1)	D55	<b>CONSOLE</b>
	KC4	<b>COOLING SYSTEM:</b> Heavy Duty —Engine Oil Cooler (S10 Only) (Reqs LR2 Eng, MX0 Trans and V01 or V02 Cooling)
	V01	—Radiator (N/A V02 Cooling) (Incl w/C60 Air)
	V02	—Radiator and Transmission Oil Cooler (Reqs LR2 Eng and MX0 Trans)
	P17	<b>COVER, SPARE TIRE</b>
	C51	<b>DEFLECTOR, AIR</b>
	C49	<b>DEFOGGER, REAR WINDOW:</b> Electric (w/o C60 Air Incls K81 Gen)
	AU3	<b>DOOR LOCK SYSTEM, POWER:</b> Side Door (Incl w/ZQ2 Conv Pkg)
	U16	<b>GAGES:</b> —Gage, Tachometer (Incls Z53 Gages)
(1)	Z53	—Voltmeter, Temperature and Oil Pressure w/Trip Odometer (Incl w/U16 Gage)
	K81	<b>GENERATOR:</b> 66-Amp Delcotron (N/A C60 Air w/C49 Defogger) (Incl w/V10 Cold-Climate, C60 Air Conditioning or C49 Defogger)
	AA3	<b>GLASS:</b> —Deep Tinted w/Light Tinted Rear Window (N/A AJ1 Glass)
	AJ1	—Deep Tinted
	TT4	<b>HEADLAMPS, HALOGEN</b>
	K05	<b>HEATER, ENGINE BLOCK</b>
	U26	<b>LAMP:</b> Engine Compartment
		<b>MIRRORS:</b> —Visor
	D34	—Exterior, Below Eye-Line Type, Black
(2)	D44 D45	—Exterior, Below Eye-Line Type, Stainless Steel
(3)	B84	<b>MOLDINGS:</b> —Body Side and Wheel Opening (Incl w/ZY8 Paint) (Incls B96 Mldgs)
	B93	—Door Edge Guard
	B74	—Wheel opening, Black (N/A B96 Mldgs)
	B96	—Wheel Opening, Bright (Incl w/B84 Mldgs)

PLEASE REVIEW OPTION RESTRICTIONS BEFORE ORDERING

Q-S	OPTION	
(3)	ZQ2	<b>OPERATING CONVENIENCE PACKAGE:</b> (Incls AU3 Door Locks and A31 Windows)
	B3W	<b>PRELIMINARY PRICE INFORMATION</b>
(1)	U63	<b>RADIO EQUIPMENT:</b> —AM Radio
	U69	—AM/FM Radio
(2)	UU9	—Electronically Tuned AM/FM Stereo Radio
(3)	UU7	—Electronically Tuned AM/FM Stereo Radio & Stereo Cassette Tape w/Clock
	UM6	—Electronically Tuned AM/FM Stereo Radio & Stereo Cassette Tape w/Seek-Scan and Clock (Incls U66 Speakers)
	U66	—Speakers, Premium Dual Rear (Reqs UU7 or UU9 Radio) (Incl w/UM6 Radio)
(1)	AM7	<b>SEATING:</b> (MUST ORDER AM7 or YG4 Seat) —Rear, Folding, 2-Passenger
	YG4	—Rear Seat Not Desired (N/A AM7 Seat)
	A78	<b>SEAT EQUIPMENT:</b> Seat Backs, Reclining
(3)	NY7	<b>SHIELD, TRANSFER CASE:</b> (T10 Only) (Incl w/Z71 Chassis Equip)
	F51	<b>SHOCK ABSORBERS:</b> Front and Rear, Heavy Duty (N/A Z71 Chassis Equip) (Incl w/F60 Susp)
	ZK4	<b>SPARE TIRE, FULL SIZE:</b> (Replaces Standard Compact Spare) —Highway (N/A QJL, QJT or QEB Tires)
	ZK5	—On-Off Road (S10 Reqs Q1C, QJT or QJL Tires) (T10 Reqs QJL, QJT or QEB Tires) (Incl w/Z71 Chassis Equip)
(3)	K34	<b>SPEED CONTROL, ELECTRONIC</b>
	N51	<b>STEERING:</b> —Power Not Desired
(1)	N40	—Power
(2)	N33	<b>STEERING WHEEL:</b> Comfortilt
	D9A	<b>STRIPING:</b> (Reqs ZY1 Paint) (N/A B84 Mldgs) (See Color and Trim Chart for Availability) —Black
	28A	—Blue, Dark
	64A	—Gold
	72A	—Red
	17A	—Silver
	12A	—White
	F60	<b>SUSPENSION EQUIPMENT:</b> Front, Heavy-Duty (T10 Only) (N/A Z71 Chassis Equip) (Incls F51 Shocks) (Recommended for snowplow type usage only)
(3)	AU6	<b>TAILGATE WINDOW RELEASE, POWER</b>
(1)	NK2	<b>TANK, FUEL:</b> Approx. 20 Gallons <b>TIRES:</b> (B/W: Blackwall, W/W: Whitewall, W/L: White Lettered) (Incls Compact Spare Tire) Highway Fiberglass Belted Radial Ply (Front and Rear) —P195/75R-15 B/W (Base) —P195/75R-15 W/W Highway Steel Belted Radial Ply (Front and Rear) —P205/75R-15 B/W —P205/75R-15 W/L Steel Belted Radial Ply (Front-Highway and Rear On-Off Road) (CS105 16 Only) —P205/75R-15 B/W On-Off Road Steel Belted Radial Ply (Front and Rear) (N/A ZK4 Spare) —P205/75R-15 B/W —P205/75R-15 W/L —P235/75R-15 W/L (CT105 16 Only) (See Power Teams Chart For Axle Restrictions) (Reqs LR2 Eng and ZK5 Spare)
	V76	<b>TOWING DEVICE:</b> Two Front Tow Hooks (T10 Only) (Incl w/Z71 Chassis Equip)
	VR2	<b>TRAILER HITCH:</b> Deadweight Type (N/A Z82 Trailing) (Incl w/Z71 Trailing)
	Z72	<b>TRAILERING PACKAGE:</b> (N/A Z82 Trailing) (Reqs LR2 Eng, MX0 Trans and V01 or V02 Cooling or C60 Air) (Incls VR2 Hitch)
✓	Z82	<b>TRAILERING SPECIAL EQUIPMENT:</b> Heavy Duty (Reqs LR2 Eng, MX0 Trans, V02 Trans Cooling, N40 Steering and 3.73 or 4.11 Rear Axle) (T10 w/QEB Tires Reqs 4 Rear Axle) (w/o C60 Air, V10 Cold Climate Pkg or C49 Defogger Reqs K81 Gen) (Refer Trailering Guide)
	P06	<b>WHEEL TRIM:</b> Trim Rings (Incl w/Z71 Chassis Equip)
		<b>WHEELS:</b> —Aluminum, Cast (T10 Only) (N/A QYP or QYQ P195 Tires) —Styled (S10 Only)
✓	A31	<b>WINDOWS:</b> Power, Side Door (Incl w/ZQ2 Conv Pkg)
	CD4	<b>WINDSHIELD WIPER SYSTEM:</b> Intermittent

**NOTES**