

C H E V Y T R U C K S 1 9 8 5

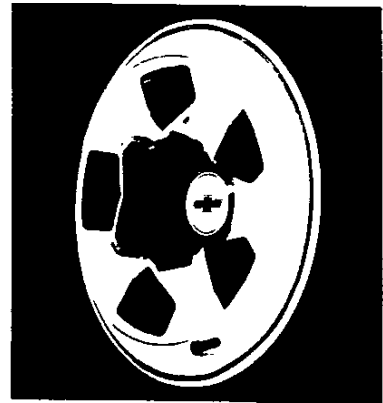
S-10 BLAZER

Two-Wheel Drive



Four-Wheel Drive

WHAT'S NEW FOR '85



EXTERIOR

- New black chrome endgate release handle.
- Improved retention on standard 4x4 hub center cover.

BODY

- Body improvements include an important increase in corrosion protection. The front fender skirts are two-sided galvanized.
- New fuse block for improved serviceability.

CHASSIS AND POWERTRAIN

- New 2.5 Liter Electronic Fuel Injection (EFI) gas engine incorporates the latest engine technology. Features include roller hydraulic valve lifters and special pistons for truck use. Net horsepower: 92 @ 4,400 RPM. Net torque (lb.-ft.): 134 @ 2,800 RPM.
- New rear brake adjusters which automatically adjust when the truck is moved in reverse without the brakes being applied.

- Steel-belted P195/75R-15 blackwall tires with all-season tread are standard on 4x4 models. The tread provides improved traction, reduces noise level, decreases rolling resistance and is lighter in weight.

- A new upshift light is added to the instrument panel to indicate when the manual transmission should be shifted to maintain road speed and good fuel economy.
- New low-pressure gas shock absorbers on all Blazers for improved ride characteristics.

OPTIONS

- New Custom Two-Tone paint. Provides secondary paint placement from the upper body belt styling line to the bottom of the truck, including the hood and tailgate. (Shown above.)
- New styled wheels for 2WD Blazer feature a new paint scheme. (Shown above.)
- The Sport trim changes to include black chrome

finish on grille and headlamp bezels, black finish tail-lamp bezels, black key cylinder locks and door handles.

- New Custom Vinyl and new Custom Cloth seat trim fabrics.
- The luggage carrier will have a new black finish.
- The 1985 radio lineup will utilize more of the Electronically Tuned Receiver (ETR™) feature.
- The intermittent windshield wiper system control is now included in Smart Switch on the steering column.
- Usage of all-season tread design is further expanded to include many optional tires on 4x4 models.
- Cast aluminum spare wheel now available for use with cast aluminum wheels.
- New precleaner air cleaner is available for use with the 2.8 Liter V6 engine only.
- Four-speed automatic transmission with overdrive is now available with the 2.5 Liter L4 gas engine on all Blazer models.

STANDARD VALUE FEATURES

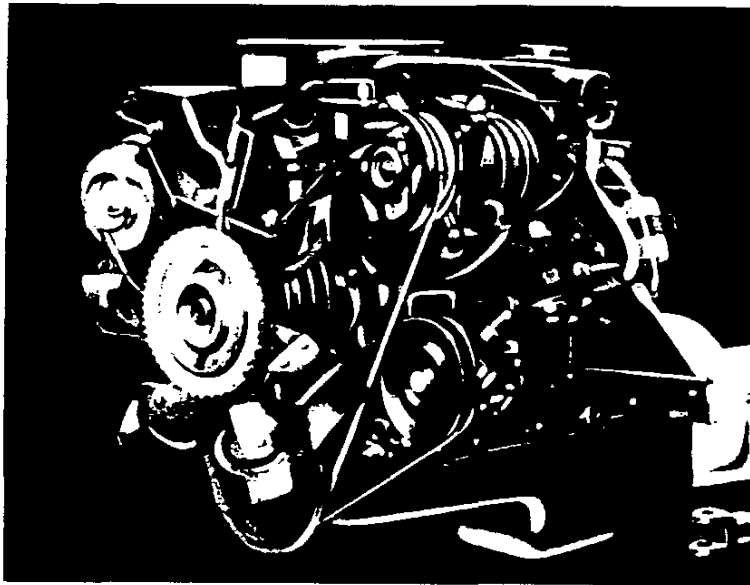
ALL THIS AT NO EXTRA COST:

- New 2.5 Liter Electronic Fuel Injection (EFI) engine for improved performance.
- Upshift light on instrument panel to indicate best time to shift the manual transmission for best fuel economy.
- Available in 2WD/4WD models.
- Low-pressure gas shock absorbers for improved ride.
- Double-wall construction has both an inner and outer wall in the hood, doors, front fenders, quarter panels and endgate for added body strength.
- Door hinges welded to door frames in a master control fixture for precision control of gap tolerances.
- Standard 13.2-gallon fuel tank. Optional 20-gallon tank available.
- 15-inch tires and wheels.
- Steel-belted all-season radial ply tires for improved traction and tread life.
- RH and LH mirrors with low-gloss black finish.
- Full-length steel, nonremovable roof.
- Fold-down endgate and lift-glass window. Center key lock releases endgate and gas-operated lift-glass.
- Tinted glass standard, all windows. Deep tint available.
- Molded plastic grille, chrome and black integral Chevrolet emblem in center of grille.



- Endgate lettering, black or silver decal on embossed Chevrolet letters, depending on exterior color.
- Fluidic windshield washer provides improved spray pattern for better cleaning.
- Self-adjusting front disc brakes have audible wear sensors as an early warning of front brake wear.
- Rear brake adjusters to eliminate periodic brake adjustments.
- Folding, high-back bucket seats (shown above) with easy-entry feature on RH seat.
- Full interior trim, including rear.
- Single-tone interior color scheme in four colors.
- Seat belts with outboard retractors in front.
- Full door trim panels with armrests and headliner for good appearance and improved acoustics.
- Sunshades (2), ashtray, inside mirror and coat hooks (2) for convenience.
- Plastic scuff plate at endgate and front door-sill plates.
- Floor mat with bonded insulation for front and rear compartments.
- Rear quarter trim panels cover exposed sheet metal from front door to endgate.
- Column-mounted Smart Switch controls turn signals, headlight beam mode and wiper/washer for driver's convenience.
- Seat adjuster on driver's and passengers' seats.
- Inside hood release for theft protection to the engine compartment.
- Sliding door lock levers help deter theft.
- Grab handles on 4x4 Blazers for all passenger seating positions.
- New fuse block for improved serviceability.

ENGINE VALUE FEATURES



The new 2.5 Liter L4 gas engine incorporates the latest in high technology which results in a 10% increase in net horsepower and a 25% increase in net torque over the 2.0 Liter engine it replaces. Other advantages of the new engine and its computer-controlled Electronic Fuel Injection (EFI) system:

- It's simpler. It takes the complexity out of the engine compartment and places it in the Electronic Control Module (ECM).
- It's more responsive, especially during cold starts and warm-ups.

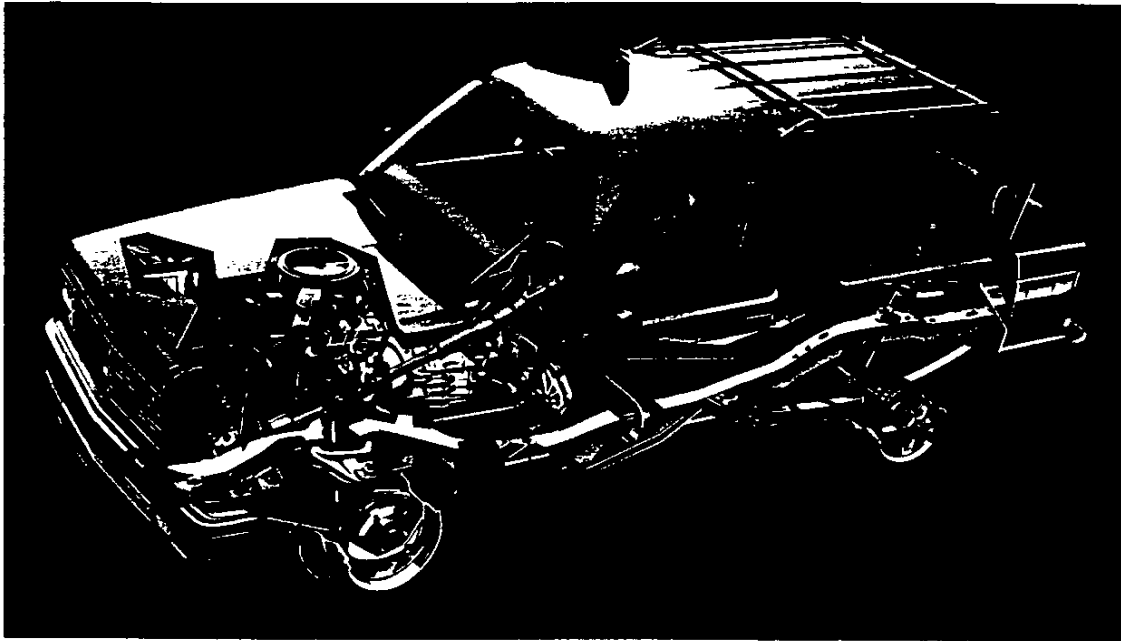
- It offers outstanding fuel economy.
- It is far less sensitive to the extremes of operating conditions and it is altitude compensated.
- The simpler EFI system has proved to be easier to service. It eliminates the carburetor, choke, needle valve and float.

Other high-technology features include:

- Lightweight castings: head, block and crankshaft.
- Aluminum intake manifold reduces weight.
- Fabricated stainless steel exhaust manifold.
- Roller hydraulic valve lifters reduce friction.
- Low-tension oil rings reduce friction.

- High torque improves low engine speed operation.
- Fast-burn combustion chamber.
- Swirl inlet ports for improved combustion efficiency.
- Shrouded inlet valve for increased swirl.
- Centralized, compound angle spark plug.
- Special pistons for truck use.
- 8.7 to 1 compression ratio.
- 2.8 Liter V6 engine** available on all Blazers for increased performance; net horsepower increased to 115 @ 4,800 RPM, net torque 150 @ 2,100 RPM.

CHASSIS VALUE FEATURES



FRAME ASSEMBLIES (2WD AND 4WD)

- Full-frame construction.
- All S-10 frames are hot-wax-coated for corrosion protection.
- Box-section front frame with channel-type rear side rails.
- All welded, except for riveted rear cross members for strength.
- Five cross members for 2WD frames. Six cross members for 4WD frames.

FRONT SUSPENSION (2WD)

- Independent front suspension with coil springs provides an impressive smooth ride.
- Computer-selected front springs matched to vehicle weight.
- Control arms are rubber bushed for noise and shock damping.

- 1" diameter solid bar front stabilizer standard.
- Ball joints equipped with visible wear indicators.
- 25mm low-pressure gas-filled shock absorbers standard.

FRONT SUSPENSION AND CHASSIS (4WD)

- Rubber-bushed upper and lower control arms with torsion bar springs.
- Insta-Trac 4-wheel drive system features vacuum-activated center lock feature for freewheeling in 2WD and easy shift to 4WD Hi while moving at any speed.
- Two-speed transfer case with single shift lever and illuminated shift panel.
- Four universal joints provide independent articulation.

- Torsion bar front springs, computer selected and adjusted for trim at factory.
- 1" diameter front stabilizer bar standard.
- 25mm low-pressure gas-filled shock absorbers standard.

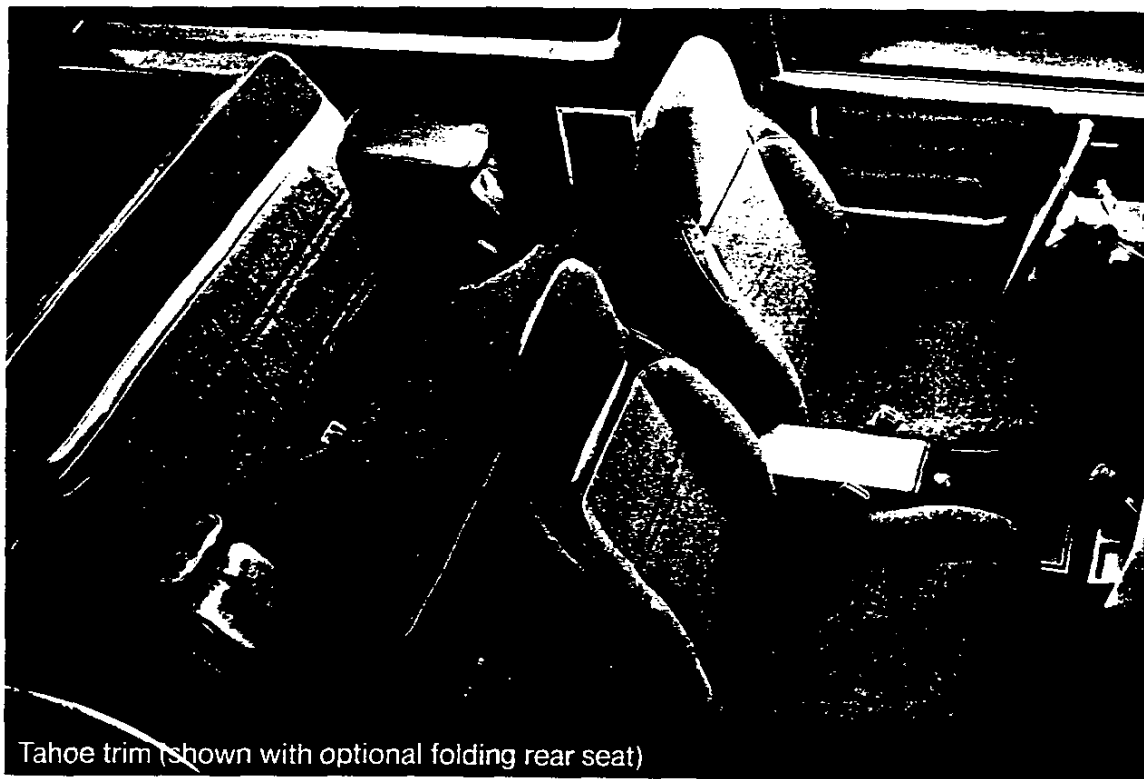
REAR SUSPENSION

- Recambered rear springs for revised trim height.
- Two-state, multileaf springs adjust to the load to provide smooth ride.
- Ionoclad anti-corrosion paint used on rear springs.

TRAILERING

With the available V6 engine and Heavy-Duty Trailering Package, a 2WD S-10 tows up to 5,000 lbs. (4,000 lbs. for 4WD), including trailer and cargo.

TAHOE/SPORT TRIM OPTION



Tahoe trim (shown with optional folding rear seat)

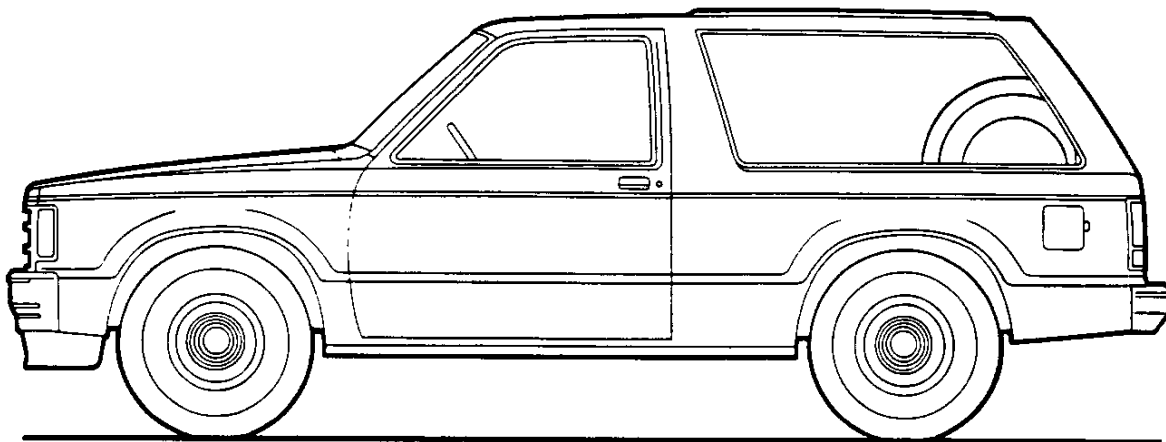
The Tahoe option is available in Custom Vinyl high-back bucket seats, Special Custom Cloth high-back bucket seats and High Country Sheepskin high-back bucket seats. The Sport option is available in Sport Cloth high-back bucket seats and High Country Sheepskin high-back bucket seats. See pages D and E for complete details on other trim features of the Tahoe and Sport options.



Sport trim

S-10/15 BLAZER/JIMMY 2- & 4-WHEEL DRIVE

MODEL SELECTOR



SERIES	MODEL NUMBER	BODY ORDERING CODE
		GASOLINE MODELS
S-10/S-15 (4x2)	S10516	E55
S-10/S-15 (4x4)	T10516	E55

S-10/15 BLAZER/JIMMY 2- & 4-WHEEL DRIVE

GASOLINE

STANDARD SPECIFICATIONS

(See Gray Tab Section for Specification Details)

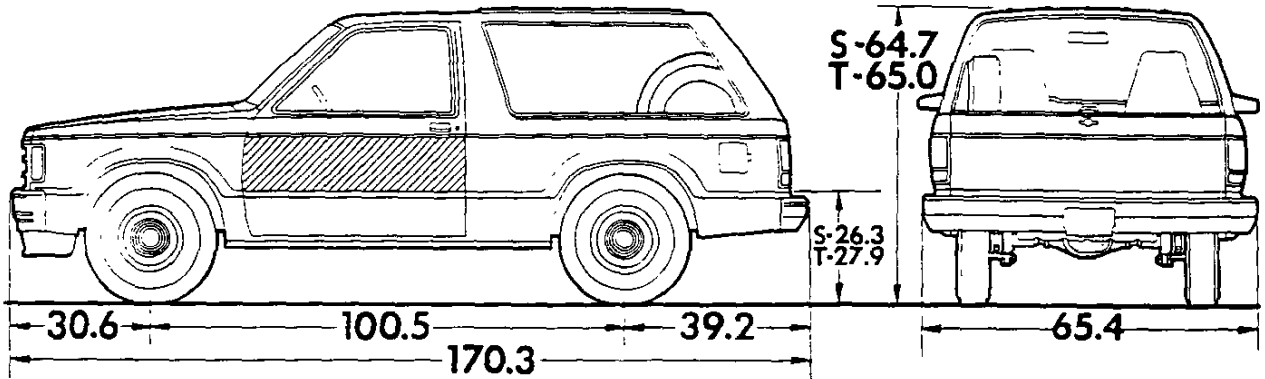
Series	S-10/15 4x2	S-10/15 4x4
Engine	2.5 Liter (151 Cu. In.) EFI L4	
Base Equip.	9.13; 71.86 sq. in.	
Clutch	Oiled-paper Element	
Air Filter	Throwaway Type	
Oil Filter	Single Aluminized	
Exhaust System	See Engine & Cooling Section for specific model applications	
Emission Control Systems		
Suspension, Front	Independent	Independent Driving Axle
Type	Coil Springs	Torsion Bar
Axle Capacity	2200 lb.	2400 lb.
Axle Ratio	—	3.73
Springs @ Ground	1100 lb. ea.	1200 lb. ea.
Shock Absorbers	25mm dia.	25mm dia.
Stabilizer Bar	29mm dia.	32mm dia.
Suspension, Rear	Salisbury Axle; Hypoid Drive; Two-stage Multi-leaf Springs	
Type	Leaf Springs	
Axle Capacity	2600 lb.	2700 lb.
Axle Ratio	3.73	3.73
Springs, Main @ Ground	1350 lb. ea.	
Shock Absorbers	25mm dia.	
Brakes	Hydraulic; Self-adjusting	
Front	Disc; 10.51" Rotor	
Rear	Drum; 9.49" x 2"	
Booster	Single Diaphragm	
Parking	Cable to Rear Wheels	
Electrical	12 Volt; Negative Ground	
Battery - Freedom Type	405 CCA ♦ @ 0°F.	
- Reserve Capacity	75 min. @ 80°F.	
Delcotron Generator	56 amp.	
Frame	Carbon Steel; 36,39,000 psi	
Section Modulus	1.78	
Fuel Tank (nominal capacity)	13.2 gal.	
Steering Gear Type	Manual; Recirculating Ball Gear	
Linkage	Parallelogram	
Transmission	4-Speed Manual	
Shift Location	Floor	
Transfer Case	—	New Process 207 2-Speed
Shift Lever	—	Single Lever
Tires	(4) P195/75R15 All Seasons Steel Belted Radial	
Spare	(1) T155/90D16	
Wheels	(4) Disc, 15" x 6"	
Spare	(1) Disc, 16" x 4"	

♦CCA-Cold Cranking Amps

S-10/15 BLAZER/JIMMY 2- & 4-WHEEL DRIVE

GASOLINE

Body Ordering Code: E55



Sign Panel Area (side)
12 3/4" x 45"



Model	Body Ordering Code	Engine No. Cyl.	Curb Weight (lb)			Model Weights (lb)*			Ground Clearance (in)*
			Front	Rear	Total	Front	Rear	Total	Minimum
S10516	E55	4	1460	1437	2897	1599	1598	3197	7.4
T10516	E55	4	1676	1480	3156	1815	1641	3456	6.6

* Dimensions with standard equipment, unloaded.

*Model Weights include curb weight plus occupants (standard seating capacity x 150 lbs.). Total Weight may vary as much as ± 50 lbs. to allow for production build variation.

PAYLOAD SELECTOR

±Maximum Ratings				Minimum Equipment Required for GVW Rating		
Payload (lb)	GVW Range (lb)	±GAWR (lb)		Tires, Front	Tires, Rear	Chassis Equipment
		Front	Rear			
S-10/S-15 MODELS (2-WHEEL DRIVE)						
1000	3880 to 4600	2200	2600	P195/75R15	P195/75R15	Standard
S-10/S-15 MODELS (4-WHEEL DRIVE)						
1000	4125 to 4880	2400	2684	P195/75R15	P195/75R15	Standard

±GAWRs shown are the maximum for each axle with the equipment listed. Maximum ratings include an additional 50 lbs. allowance for vehicle weight variance.

±GAWR—Gross Axle Weight Rating.

S-10/15 BLAZER/JIMMY 2- & 4-WHEEL DRIVE

POWER TEAMS

Note: All payloads for S Blazer/Jimmy are 1000 lbs

ALL STATES EXCEPT CALIFORNIA

POWER TEAMS (MUST ORDER ENGINE, TRANSMISSION AND REAR AXLE)

ENGINE	TRANSMISSION			AXLES		
	4-SP	5-SP	AUTO	3.42	3.73	4.11
W/NA5 STANDARD EMISSION EQUIPMENT						
—S10516						
LN8 L4 2.5 Liter EFI	MM4			—	GQ1	H04
		MM5	MX0	—	GQ1	GQ1 H04
LR2 V6 2.8 Liter 2BBL (Reqs N40 Steering)	MM4			GQ1	GT4	—
		MM5		—	GQ1	H04
			MX0	GQ1	GT4	—
—T10516						
LN8 L4 2.5 Liter EFI	MM4			—	GQ1	H04
		MM5		—	—	GQ1
LR2 V6 2.8 Liter 2BBL (Reqs N40 Steering)			MX0	—	—	GQ1
	MM4			*GQ1	GT4	—
		MM5		—	*GQ1	H04
		MX0	*GQ1	GT4	#H04	
W/NA6 HIGH ALTITUDE EMISSION EQUIPMENT						
—S10516						
LN8 L4 2.5 Liter EFI	MM4	MM5	MX0	—	—	GQ1
LR2 V6 2.8 Liter 2BBL (Reqs N40 Steering)	MM4		MX0	—	GQ1	—
		MM5		—	GQ1	H04
—T10516						
LN8 L4 2.5 Liter EFI	MM4	MM5	MX0	—	—	GQ1
LR2 V6 2.8 Liter 2BBL (Reqs N40 Steering)	MM4	MM5	MX0	—	*GQ1	#H04

CALIFORNIA ONLY

ENGINE	TRANSMISSION			AXLES		
	4-SP	5-SP	AUTO	3.42	3.73	4.11
W/YF5 CALIFORNIA EMISSION REQUIREMENTS						
—S10516						
LN8 L4 2.5 Liter EFI	MM4		MX0	—	GQ1	H04
		MM5		—	—	GQ1
LR2 V6 2.8 Liter 2BBL (Reqs N40 Steering)	MM4			GQ1	GT4	—
		MM5		—	GQ1	H04
			MX0	GQ1	GT4	—
—T10516						
LN8 L4 2.5 Liter EFI	MM4			—	*GQ1	H04
		MM5	MX0	—	—	GQ1
LR2 V6 2.8 Liter 2BBL (Reqs N40 Steering)		MM5		—	*GQ1	H04
	MM4			—	*GQ1	#H04
			MX0	*GQ1	GT4	#H04

% Reqs Z82 Trailering
*N/A P235/75R15 Tires

§ Reqs P235/75R15 Tires
Reqs P235/75R15 Tires and Z82 Trailering

ENGINE RATINGS—ALL STATES

SAE Net Ratings @ 85°F	2.5 Liter 151 EFI L4	2.8 Liter 173-2 BBL V6
Net Horsepower	92 @ 4400 rpm	115 @ 4800 rpm
Net Torque, lb-ft	134 @ 2800 rpm	150 @ 2100 rpm

S10/15 2 AND 4 WHEEL DRIVE BLAZER/JIMMY

OPTIONS WHEN INSTALLED BY GENERAL MOTORS

Description	Option Number	Factory D&H(a)	List Price	Mfr's Suggested Retail Price ^o
OTHER OPTIONS				
Carriers, Luggage:				
Bright. Not available when YC3 is specified	V55			
Black	V54			
Chassis Equipment: Off-Road Package. T10516 only. Not available when F51 H.D. Shock Absorbers are specified. Includes QEB P235/75R15 tires, ZK5 Full Size Spare, special torsion bars, shock absorbers, jounce bumpers, front stabilizer, V76 Tow Hooks and NY7 Transfer Case Shield				
Without YC2 or YC3. Includes P06 Trim Rings	Z71			
With YC2 or YC3	Z71			
Cold-Climate Package: Includes UA1 H.D. Battery and special insulation. Without C60 Air Conditioning or C49 Defogger. Also includes K81 66-Amp Generator				
Without YC2 or YC3	V10			
With YC2 or YC3	V10			
With C60 Air Conditioning or C49 Defogger				
Without YC2 or YC3	V10			
With YC2 or YC3	V10			
Console: Front Compartment Floor. Included when YC3 is specified	D55			
Cooling System:				
<i>Engine Oil, S1 Series only.</i> Available only when LR2 2.8 Liter Engine, MX0 Automatic Transmission and V01 H.D. Radiator or V02 H.D. Radiator and Transmission Oil Cooler are specified				
	KC4			
<i>Radiator, Heavy-Duty.</i> Not available when V02 H.D. Radiator and Transmission Oil Cooler is specified. Included when C60 Air Conditioning is specified				
	V01			
<i>Radiator and Transmission Oil, Heavy-Duty.</i> Available only when LR2 2.8 Liter Engine and MX0 Automatic Transmission are specified.				
Without C60 Air Conditioning	V02			
With C60 Air Conditioning	V02			
Cover, Spare Tire: Included when YC2 or YC3 is specified	P17			
Deflector, Air	C51			
Defogger, Rear Window: Electric.				
Without C60 Air Conditioning or V10 Cold-Climate Package. Includes K81 66-Amp Generator				
	C49			
With C60 Air Conditioning or V10 Cold-Climate Package	C49			
Door Lock System, Power: Side Doors only. Included when ZQ2 Operating Convenience Package is specified				
	AU3			
Floor Covering: Mats, Color-Keyed, Removable Available only when YC2 or YC3 is specified.				
Front	B32			
Rear	B33			
Gages:				
<i>Voltmeter, Temperature, Oil Pressure and Trip Odometer.</i> Included when YC2, YC3 or U16 Tachometer is specified				
	Z53			
<i>Tachometer.</i>				
Without YC2 or YC3. Includes Z53 Gage Package	U16			
With YC2 or YC3	U16			
Generator: 66-Amp Delcotron. Not available when C60 Air Conditioning is specified with C49 Defogger. Included when C60 Air Conditioning, C49 Defogger or V10 Cold-Climate Package is specified				
	K81			
Glass:				
<i>Deep Tinted.</i> Includes dark laminated glass on rear quarters and rear window ..	AJ1			
<i>Deep Tinted with Light Tinted Rear Window.</i> Not available when AJ1 Deep Tinted Glass is specified. Includes dark laminated glass on rear quarter windows ...	AA3			
Headlamps, Halogen	TT4			
Heater, Engine Block: 600 watts, 120 volts.	K05			
Lamp, Engine Compartment	U26			
Mirrors, Exterior: LH and RH, Below-Eye-Line Type.				
<i>Painted</i>	D44			
<i>Bright.</i> Not available when YC3 is specified	D45			

S10/15 2 AND 4 WHEEL DRIVE BLAZER/JIMMY

OPTIONS WHEN INSTALLED BY GENERAL MOTORS

Description	Option Number	Factory D&H(a)	List Price	Mfr's Suggested Retail Price ◊
OTHER OPTIONS				
Mirror, Visor: RH. Included when YC2 or YC3 is specified	D34			
Moldings:				
<i>Body Side and Wheel Opening.</i> Included when YC2, YC3 or ZY8 Special Two-Tone Paint is specified. Includes lower side and rear moldings of black plastic with bright trim and wheel opening moldings.				
Without ZY7 Sport Two-Tone Paint	B84			
With ZY7 Sport Two-Tone Paint	B84			
<i>Guards, Door Edge</i>	B93			
<i>Wheel Opening.</i>				
Bright. Not available when YC3 is specified. Included when YC2 or ZY8 Special Two-Tone Paint is specified. Also included with B84 Body Side and Wheel Opening Moldings except when YC3 is specified	B96			
Black. Included when YC3 is specified. Not available when B96 Bright Wheel Opening Moldings are specified				
Without B84 Body Side and Wheel Opening Moldings	B74			
With B84 Body Side and Wheel Opening Moldings	B74			
Operating Convenience Package: Includes AU3 Power Door Locks and A31 Power Windows	ZQ2			
Preliminary Price Information	B3W			
Radio Equipment:				
AM Radio	U63			
AM/FM Radio	U69			
AM/FM Radio with Clock	UL7			
AM/FM Stereo Radio. Electronically Tuned	UU9			
AM/FM Stereo Radio and Clock. Electronically Tuned	UL1			
AM/FM Stereo Radio and Stereo Cassette Tape, Seek and Scan and Clock. Electronically Tuned. Includes U66 Premium Dual Rear Speakers	UM6			
AM Stereo and FM Stereo Radio with Seek and Scan, Stereo Cassette Tape, Clock and Graphic Equalizer. Electronically Tuned. Includes U66 Premium Dual Rear Speakers	UX1			
Speakers, Premium Dual Rear. Available only when UU9 or UL1 Radio is specified. Included with UM6 or UX1 Radio	U66			
Seats: (Dealer Note— AM7 Rear Seat or YG4 Rear Seat Not Desired must be specified. Added weight reflects optional seat weight only. Refer to vehicle and option weight section of Data Book)				
Folding Rear Bench. Includes armrests	AM7			
Optional Seat Not Desired	YG4			
Seat Backs, Reclining. R.H. and L.H. Included when YC3 is specified	A78			
Shield, Transfer Case: T1 Series only. Included when Z71 Chassis Equipment is specified	NY7			
Shock Absorbers: Heavy-Duty, Front and Rear. Not available when Z71 Chassis Equipment is specified. Included when F60 H.D. Front Suspension is specified	F51			
Spare Tire: Full size. Included with Z71 Chassis Equipment. Replaces Standard Compact Spare				
<i>Highway</i>				
With QAR P195/75R15 All Seasons Steel Belted Radial Ply Blackwall	ZK4			
With QAS P195/75R15 All Season Steel Belted Radial Ply Whitewall	ZK4			
With QYP P195/75R15 Highway Fiberglass Belted Radial Ply Blackwall	ZK4			
With QCE P205/75R15 All Seasons Steel Belted Radial Ply Blackwall	ZK4			
With QCF P205/75R15 All Seasons Steel Belted Radial Ply White Lettered	ZK4			
With Q1C P205/75R15 Highway (Front) On-Off Road (Rear) Steel Belted Radial Ply Blackwall. S1 Series only	ZK4			
<i>On-Off Road</i>				
With QJT P205/75R15 Steel Belted Radial Ply Blackwall On-Off Road Front and Rear Tire.	ZK5			
With QJL P205/75R15 On-Off Road Steel Belted Radial Ply Whitewall	ZK5			
With QEB P235/75R15 Steel Belted Radial Ply White Lettered On-Off Road Front and Rear Tires. Mounted flat in loadspace T1 Series only. Included when Z71 Chassis Equipment is specified	ZK5			
With Q1C P205/75R15 Steel Belted Radial Ply Blackwall On-Off Road	ZK5			

S10/15 2 AND 4 WHEEL DRIVE BLAZER/JIMMY (1000-lb Payload)

1985 VEHICLES WITH STANDARD EQUIPMENT

Description	Model Number	Body Code	Wheel Base	Factory D&H(a)	List Price	Mfr's Suggested Retail Price★	Group Number
◆ 4-Cylinder 2.5 Liter E.F.I. L4 Gasoline Engine-Engine Ordering Code LN8							
S10/15 Series 2-Wheel Drive							
Tailgate	CS/TS10516	E55	100.5"				
S10/15 Series 4-Wheel Drive							
Tailgate	CT/TT10516	E55	100.5"				

- ★ Manufacturer's Suggested Retail Prices do not include applicable destination charges, state and local taxes, license fees, optional equipment or special items or services.
- ◆ Refer to Power Team Chart for California Emission Certification Requirements.

OPTIONS WHEN INSTALLED BY GENERAL MOTORS

Description	Option Number	Factory D&H(a)	List Price	Mfr's Suggested Retail Price◇
Tahoe/Sierra Classic Equipment: (See Interior and Exterior Color Selection Charts) Includes color-keyed door handle inserts, B84 Body Side and Bright Wheel Opening Moldings, black quarter window moldings, special tailgate applique, P06 Wheel Trim Rings, P17 Spare Tire Cover, nameplate on instrument panel, special door trim with coin holder in LH door panel, deluxe armrest and map pockets, special color-keyed carpeting, D34 Visor Mirror, special body insulation and Z53 Gage Package with Trip Odometer				
	YC2			
Sport/Gypsy Equipment: (See Interior and Exterior Color Selection Charts) Available only when ZY7 Sport or ZY6 Custom Two-Tone Paint and Sport Cloth Trim is specified. Includes A78 Reclining Seat Backs, D55 Console, VE6 Color-Keyed Front and Rear Bumpers, black door handle inserts, P17 Spare Tire Cover, B84 Body Side and Black Wheel Opening Moldings, black quarter window moldings, special tailgate applique, nameplate on instrument panel, special door trim with coin holder in LH door panel, deluxe armrests and map pockets, color-keyed carpeting, D34 Visor Mirror, special body insulation and Z53 Gage Package with Trip Odometer.				
S10516 only. Includes PA6 Styled Wheels	YC3			
T10516 only. Includes P06 Trim Rings	YC3			
Seat Trim: (See Interior and Exterior Color Selection Chart for availability and ordering information).				
X**4 Custom Vinyl High Back Buckets. Driver and Passenger. Not available when YC3 is specified			
H**4 Special Custom Cloth High Back Buckets. Available only when YC2 is specified			
S**4 Sport Cloth High Back Buckets. Driver and Passenger. Included only when YC3 is specified.				
Without AM7 Rear Seat			
With AM7 Rear Seat			
B**4 High Country Sheepskin High-Back Bucket Seats. Driver and Passenger only. Available only when YC2 or YC3 is specified. With YC2 and AM7 Optional seat. Optional seat is Custom Cloth Trim. With YC3 and AM7 Optional Rear Seat. Optional seat is Sport Cloth Trim.			
Paints, Exterior: (See Interior and Exterior Color Selection Chart for ordering information and paint application).				
Solid	ZY1			
Custom Two-Tone. Includes dual-tone body striping				
Without YC3. Available only when VE6 Bumpers are specified	ZY6			
With YC3	ZY6			
Special Two-Tone. Middle area painted secondary color choice.				
Without YC2. Includes B84 Body Side and Bright Wheel Opening Moldings ..	ZY8			
With YC2	ZY8			
Sport Two-Tone. Included when YC3 is specified.				
Without YC2. Includes striping that matches secondary paint color except when YC3 is specified. Area below striping painted secondary color choice	ZY7			
With YC2. Area below B84 Body Side and Bright Wheel Opening Moldings painted secondary color choice	ZY7			

S10/15 2 AND 4 WHEEL DRIVE BLAZER/JIMMY OPTIONS WHEN INSTALLED BY GENERAL MOTORS

Description	Option Number	Factory D&H(a)	List Price	Mfr's Suggested Retail Price ◊
Emission Systems: <i>Dealer Note</i> – One of the following emission options must be specified. (See Power Teams Chart for Engine and Transmission Availability). California Emission Requirements. Includes all testing, equipment and /or certification necessary for registration in the state of California. Not Available when NA5 Standard or NA6 High Altitude Emissions are specified				
High Altitude Emission Equipment	YF5			
Standard Emission Equipment. Not available when YF5 California or NA6 High Altitude Emissions are specified	NA6			
	NA5			
Engines: (See Power Teams Chart for availability and complete specifications) Gasoline				
2.8 Liter 2 BBL V6. Available only when N40 Power Steering is specified	LR2			
2.5 Liter E.F.I. L4	LN8			
Transmissions: (See Power Teams Chart for availability and complete specifications).				
4-Speed Automatic with Overdrive	MX0			
4-Speed Manual	MM4			
5-Speed Manual with Overdrive	MM5			
Axles, Rear: (See Power Teams Chart for option number selection, availability and complete specifications)				
Optional Ratio				
Locking Differential	G80			
Tires: Includes Compact Spare Tire All wheel size, Front and Rear are 6.00" except when QEB Tires or N90 Wheels are specified, then wheel size is 7.00".				
TUBELESS				
P195/75R15 All Seasons Steel Belted Radial Ply Blackwall (Maximum Capacity 1342-lbs)	QAR			
P195/75R15 All Seasons Steel Belted Radial Ply Whitewall. (Maximum Capacity 1342-lbs)	QAS			
P195/75R15 Highway Fiberglass Belted Radial Ply Blackwall (Maximum Capacity 1342-lbs)	QYP			
P205/75R15 All Seasons Steel Belted Radial Ply Blackwall (Maximum Capacity 1453-lbs)	QCE			
P205/75R15 On-Off Road Steel Belted Radial Ply White Lettered (Maximum Capacity 1453-lbs)	QJL			
P205/75R15 All Seasons Steel Belted Radial Ply White Lettered (Maximum Capacity 1453-lbs)	QCF			
P205/75R15 On-Off Road Steel Belted Radial Ply Blackwall (Maximum Capacity 1453-lbs)	QJT			
P235/75R15 On-Off Road Steel Belted Radial Ply White Lettered (Maximum Capacity 1453-lbs). T1 Series only. Available only when ZK5 Full Size Spare Tire and LR2 2.8 Liter Engine is specified. Included when Z71 Chassis Equipment Package is specified	QEB			
P205/75R15 On-Off Road Steel Belted Radial Ply Blackwall (Front Highway, Rear On-Off Road) (Maximum Capacity 1453-lbs). S1 Series only	Q1C			

OTHER OPTIONS

Air Cleaner, Pre-Cleaner: Available only when LR2 2.8 Liter Engine is specified	K46
Air Conditioning: <i>All-Weather.</i> Available only when N40 Power Steering is specified. Includes V01 H.D. Radiator when V02 H.D. Radiator and Transmission Oil Cooler is not specified. Without C49 Defogger, also includes K81 66-Amp Generator.	C60
Battery: <i>Heavy-Duty.</i> 515 Cold Cranking Amps, Delco Freedom. Included when V10 Cold-Climate Package is specified	UA1
Bumper Equipment:	
Bumpers, Painted. Color-Keyed with rub strips. Front and Rear. Available only when ZY6 Custom, ZY7 Sport or ZY8 Special Two-Tone Paint is specified. Included when YC3 is specified	VE6
Bumper Guards, Front Black	V28

S10/15 2 AND 4 WHEEL DRIVE BLAZER/JIMMY

OPTIONS WHEN INSTALLED BY GENERAL MOTORS

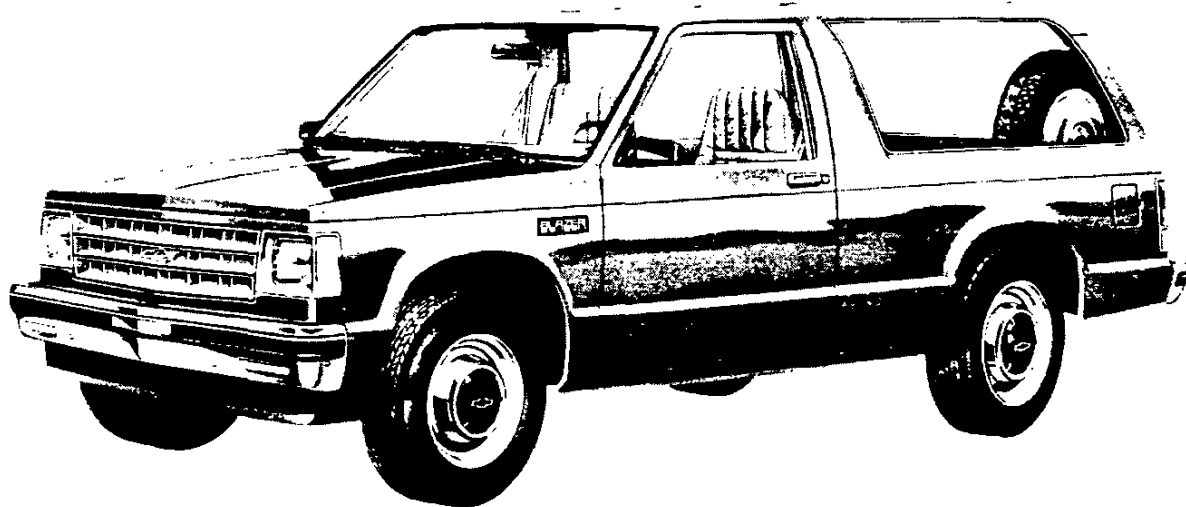
Description	Option Number	Factory D&M(a)	List Price	Mfr's Suggested Retail Price ^o
OTHER OPTIONS				
Speed Control, Electronic	K34			
Steering: <i>(One of the following steering options must be specified.)</i>				
Power	N40			
<i>Power. Not Desired. Not available when Z82 Trailering Special is specified</i>	N51			
Steering Wheel: Comfortilt	N33			
Striping: Available only when ZY1 Solid Paint is specified. Not available when B84 Body Side and Wheel Opening Moldings, YC2 or YC3 is specified. Included when ZY7 Sport Two-Tone Paint is specified. <i>(See Interior and Exterior Color Availability Charts for Ordering Information)</i>				
Black	09A			
Blue, Dark	28A			
Gold	64A			
Red	72A			
Silver	17A			
White	12A			
Suspension Equipment: <i>Front. Heavy-Duty, T1 series only. Includes F5 1 H.D. front and rear shock absorbers. Recommended for snowplow type usage only</i>	F60			
Tailgate Window Release: Power	AU6			
Tank, Fuel: <i>LH Frame Mounted. Replaces Standard Production Fuel Tank. Approximately 20-gallon capacity</i>	NK2			
Towing Device: <i>Two Front Towing Hooks. T1 Series only. Included when Z71 Chassis Equipment is specified</i>	V76			
Trailer Hitch: <i>Dead Weight Type. 2,000-lb Capacity. Not available when Z82 Trailering Special is specified. Included when Z72 Trailering Special is specified</i>	VR2			
Trailering Special: <i>(Refer Trailering Guide for additional information).</i>				
Heavy-Duty. Available only when LR2 2.8 Liter Engine, 3.73 or 4.11 Rear Axle Ratio, N40 Power Steering, MX0 Automatic Transmission and V02 H.D. Radiator and Transmission Oil Cooler are specified. Also requires K81 66-Amp Generator when C60 Air Conditioning, V10 Cold-Climate Package or C49 Defogger is not specified. T1 Series with QEB P235/75 R15 Tires available only when 4.11 Rear Axle Ratio is specified. Includes 7-lead wiring harness, weight distributing hitch platform and H.D. flasher <i>(See Trailering Guide in Recreational Vehicles Section for GCW ratings with available power team combinations.)</i>	Z82			
Light Duty. Available only when MX0 Automatic Transmission and V01 H.D. Cooling, V02 H.D. Radiator and Transmission Oil Cooler or C60 Air Conditioning are specified. With LN8 2.5 Liter Engine available only when 4.11 Rear Axle Ratio is specified. Includes 5-lead wiring harness and VR2 Dead Weight Trailer Hitch.	Z72			
Wheel Trim: Trim Rings.				
<i>S1 series only. Not available when PA6 Styled Wheels or YC3 is specified</i>	P06			
<i>T1 series only. Included when PA6 Styled Wheels, Z71 Chassis Equipment, YC2 or YC3 is specified</i>	P06			
Wheels:				
Styled. Wheel size 6.5". Four wheels only. S1 Series only. Includes special hub caps and red stripe. Included when YC3 is specified.				
Without YC2	PA6			
With YC2	PA6			
Aluminum. Cast. Wheel size 7". Four wheels only. T1 Series only. Not available when QYP or QAS P195 Tires are specified.				
Without YC2 or YC3	N90			
With YC2 or YC3	N90			
Wheel, Spare: Aluminum, Cast. T1 Series only. Available only when N90 Aluminum Wheels and ZK4 or ZK5 Spare Tire are specified	N79			
Windows:				
Power, Side Doors. Included when ZQ2 Operating Convenience Package is specified	A31			
Windshield Wiper System: Intermittent	CD4			

NOTES

S-10/15 BLAZER/JIMMY 2- & 4-WHEEL DRIVE

STANDARD MODEL—FEATURES

The standard models include the following items as standard equipment



EXTERIOR

- **Bumper:** Front and rear, chromed with black rub strips; front bumper incorporates parking lamps
- **Color:** See Interior and Exterior Color Selection Chart
- **Endgate-Liftglass:** Single pivot hinges on endgate and liftglass; latches on each side of endgate and at center for liftglass; gas cylinders attached to the black metal glass frame operate liftglass and provide check; cable checks on endgate; lift handle on glass. Center Key operated lock releases liftglass when turned to the left and endgate latches when turned to the right.
- **Glass:** Tinted, all windows
- **Grille:** Molded plastic; chrome and black; integral Chevrolet emblem/GMC letters at center of grille
- **Headlamp-Parking Lamp Bezels:** Molded plastic with chromed finish and black trim
- **Horn:** Single, electric, high-note
- **Hub Caps:** Bright metal with black trim
- **Keys:** Two-key system; with separate keys for ignition switch and door locks
- **Lettering, Endgate:** Black or silver decal on embossed Chevrolet/GMC letters depending on exterior color
- **Lights:**
 - Backup lamps: Two rear (integral with taillamps)
 - Combination parking/direction/hazard: Two front
 - Combination tail/stop/direction/hazard: Two rear
 - Headlamps: Two, rectangular
 - License plate lamp: Single rear
 - Side marker lamps with reflectors: Two front; two rear (integral with taillamps)
- **Mirrors:** RH and LH fixed arm with adjustable 6½" wide x 4" high aerodynamic heads; low gloss black finish. RH mirror is convex
- **Moldings:** Low-gloss black windshield and rear window
- **Nameplates:** Bright "Blazer/Jimmy" nameplates on front fenders near doors. 4-wheel-drive models have a "4X4" nameplate mounted below the fender nameplate
- **Wheels:** Painted argent
- **Windshield Wipers and Washers:** Electric, 2-speed wipers with low-gloss black finish on exposed metal portions; coordinated washer with fluidic oscillator at center of plenum inlet grille



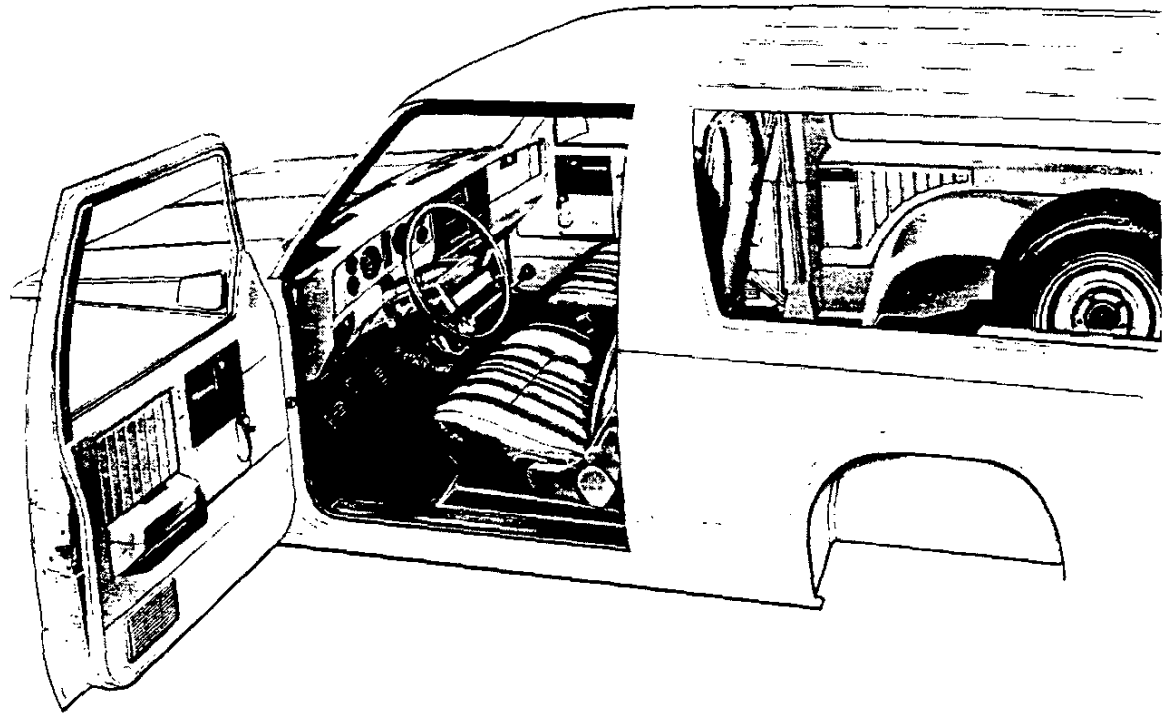
S-10/15 BLAZER/JIMMY 2- & 4-WHEEL DRIVE

**CAB & BODY FEATURES
SEATING ARRANGEMENTS
CAB DIMENSIONS
COLOR & TRIM CHARTS
TWO-TONES**

S-10/15 BLAZER/JIMMY 2- & 4-WHEEL DRIVE

STANDARD MODEL—FEATURES

The standard models include the following items as standard equipment



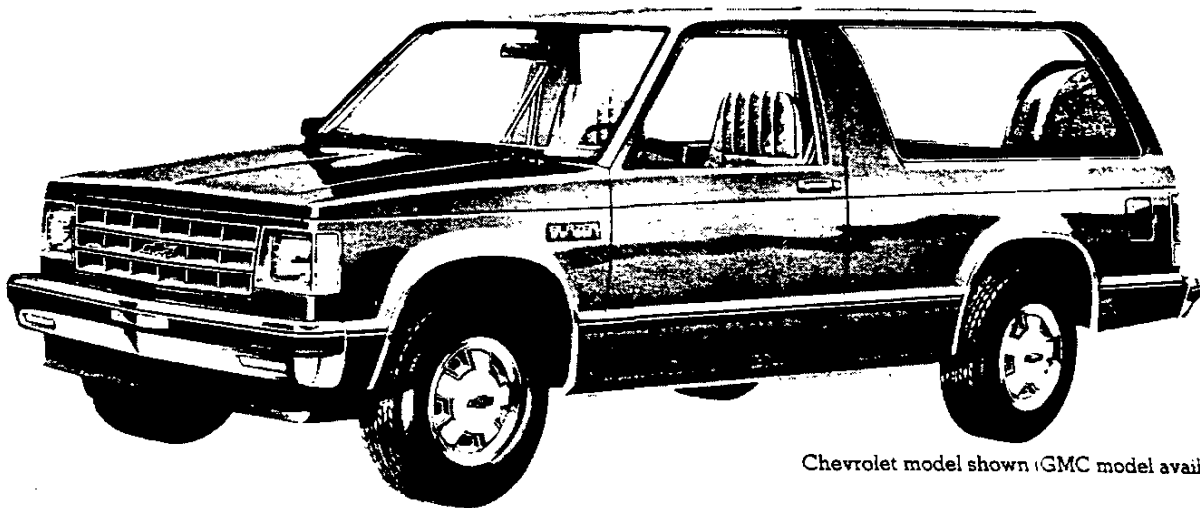
INTERIOR

- **Armrests:** RH and LH padded; integral with door trim panels
- **Ashtray:** In middle of instrument panel
- **Cigar Lighter:** With ashtray light
- **Coat Hook:** RH side
- **Colors:**
 - Painted areas: Same as exterior primary color choice
 - Interior trim: Coordinated with seat trim color choice
- **Dome Lamps:** Front and rear; with bright trim
- **Door Sill Plates:** Door-opening protection and floor mat retention; full-length; black plastic. Color-keyed plastic endgate scuff plate
- **Door Trim Panels:** Color-keyed, embossed molded plastic with integral armrests; black trim plate in regulator area
- **Floor Covering:** Color-keyed rubber mat for entire floor area
- **Headliner:** Color-keyed; full coverage molded styrene full foam with color-keyed cloth cover. 4-wheel-drive models have a color-keyed grab handle mounted over RH door
- **Headlamp Warning Buzzer**
- **Heater and Defogger:** Deluxe outside air type with power center and outboard instrument panel vents and side window defoggers
- **Hood Lock Release:** Handle located on LH side of instrument panel
- **Instrument Cluster Bezel:** Argent finish with bright trim
- **Instruments:**
 - Gages: Speedometer, odometer and fuel
 - Switches: Main, for control of exterior lights, instrument cluster lights, and cab interior lights; combination steering column switch for direction signals by moving lever up and down, headlamp beams by moving lever fore and aft, and windshield wiper and washer by turning lever to wipe and pressing lever in to wash; hazard warning; heater fan; ignition with key-in warning buzzer
 - Warning lights: Seat belt, service-parking brake, direction/hazard signal, and high beam
- **Instrument Panel Control Knobs:** Soft black plastic (except heater and wiper-washer controls) with white graphic identification
- **Instrument Panel Pad:** Color-keyed, energy-absorbing foam type with injection molded plastic substrate
- **Insulation and Sound Deadening Material:** On dash (fire-wall), under floor mat, spray deadener inside of doors, plugs on windshield pillars, on roof underside, and on headliner
- **Lights:** Instrument cluster, door-operated courtesy and dome lamps, and glove box lamp
- **Mirror, Rearview:** 10" prismatic with soft vinyl rim
- **Pillar Trim Moldings:** Color-keyed molded plastic on windshield pillars
- **Seats:** Driver and passenger, foam padded high back bucket type with leather grained custom vinyl trim. RH seat includes easy entry feature. See Interior and Exterior Color Selection Chart for color and trim availability
- **Seat Belts:** Driver and passenger non-detachable combination lap and shoulder belts with emergency-locking retractors. Seat belts are color-keyed with pushbutton type buckles
- **Spare Tire Mounting:** On LH side panel behind wheelhousing
Note: P205 and P235 full-size spare tire and wheel (available at extra cost) are stored flat at rear of body on floor.
- **Steering Wheel and Column:** 15¼" deluxe color-keyed soft plastic wheel with 2 spokes; deluxe color-keyed energy-absorbing steering column with anti-theft locking feature
- **Stowage Box:** In RH side of instrument panel; with bright key-operated lock and "S-10/S-15 Sierra" nameplate; lock operated by door key
- **Sunshades:** RH and LH padded; color-keyed
- **Tools:** Mechanical jack and wheel wrench behind seat on RH side

S-10/15 BLAZER/JIMMY 2- & 4-WHEEL DRIVE

TAHOE/SIERRA CLASSIC MODEL OPTION—RPO YC2

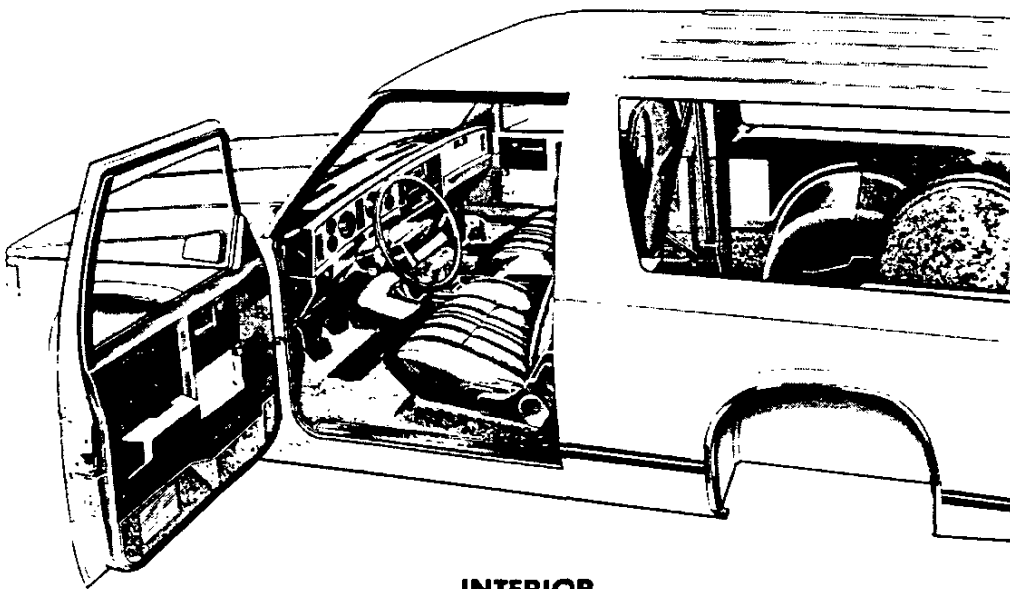
This option includes all standard model items plus the additions or substitutions listed below



Chevrolet model shown (GMC model available)

EXTERIOR

- **Bright Appearance Items:**
 - Body side molding trim
 - Bright wheel opening lip moldings
 - Wheel trim rings
- **Cab-to-Fender Insulators**
- **Door Handle Inserts:** Body color
- **Hood Insulator**
- **Moldings:** Black plastic body side moldings with bright insert and rear quarter window moldings
- **Endgate Trim:** Black applique with bright "Chevrolet/GMC" lettering and trim

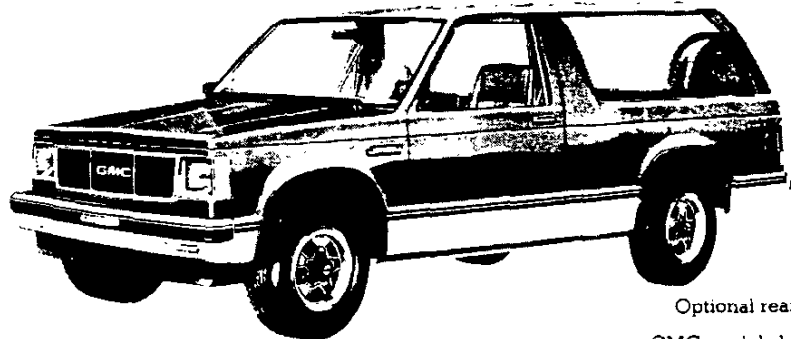


INTERIOR

- **Bright Appearance Items:**
 - "Tahoe/Sierra Classic" nameplate on stowage box door
 - Trim on instrument cluster bezels
 - Trim on door trim panels
- **Door Trim Panels:** Sport cloth insert plus brush-finished applique in regulator area; carpeted lower insert with pocket, plus coin holder in LH door
- **Floor Covering:** Color-keyed carpeting for entire floor area
- **Instrument Cluster:** Voltmeter, oil pressure gage and engine temperature gage replace warning lamps; also includes trip odometer
- **Instrument Cluster Bezel:** Brushed aluminum with bright trim
- **Insulation and Sound Deadening Material:** On plenum panels (part of specific dash mat), under floor carpeting, extra-thick on headliner, on door trim panels, and on lower portion of instrument panel
- **Seats:** Choice of: 1) leather grained custom vinyl trim; 2) dual-tone woven special custom cloth/vinyl trim. Also available at extra cost: High Country sheepskin bucket seats. See Interior and Exterior Color Selection Chart for color and trim availability
- **Spare Tire Cover:** Color-keyed carpet and vinyl
- **Trim Panels and Moldings:** Color-keyed cowl kick panels; lower rear quarter and endgate panels and jack cover
- **Visor Mirror:** On RH sun visor

S-10/15 BLAZER/JIMMY 2- & 4-WHEEL DRIVE SPORT/GYPSY MODEL OPTION—RPO YC3

This option includes all items in the Tahoe/Sierra Classic model option plus the additions or substitutions listed below

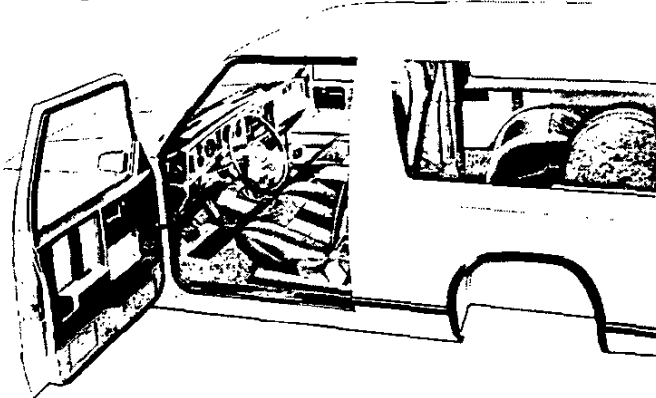


Optional rear bumper shown in illustration
GMC model shown (Chevrolet model available)

EXTERIOR

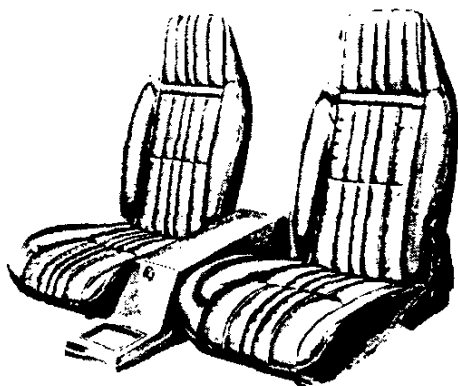
- **Bright Appearance Items:**
Delete bright wheel opening lip moldings
- **Bumpers:** Color-keyed to lower accent color, with black rub strips
- **Door Handles:** Black chrome; also includes black chrome key cylinder covers
- **Endgate Trim:** Black applique with bright "Chevrolet/GMC"

- lettering and trim
- **Grille:** Black chrome grille and headlamp bezels
- **Two-Tone Paint:** ZY7 lower-accent paint
- **Wheels:** Styled; painted argent with black trim; includes black ornamental hubs and red stripe on 2-wheel drive models. Black ornamental hubs and trim rings on 4-wheel drive models.
- **Wheel Opening Lip Moldings:** Black plastic



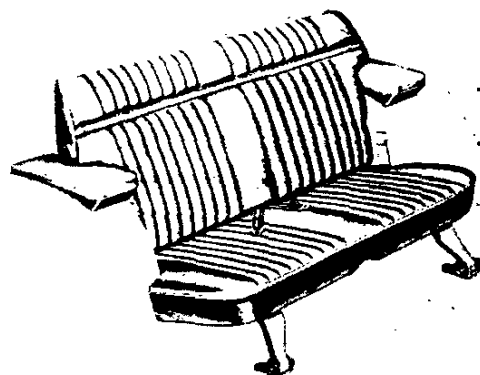
INTERIOR

- **Bright Appearance Items:**
"Sport/Gypsy" nameplate on stowage box door
Trim on steering wheel
- **Console:**
Color-keyed molded plastic with lockable stowage compartment; lock operated by door key
- **Seats:** High back, reclining buckets with sport cloth trim. Also available at extra cost: High Country sheepskin trim. See Interior and Exterior Color Selection Chart for color and trim availability
- **Steering Wheel:** Color-keyed sport type with bright shroud



STANDARD FRONT BUCKET SEATS

Consists of two high back bucket-type seats with foam padding and folding backrests with inertia latches. RH seat includes easy entry feature. A lockable color-keyed plastic center console with spacious stowage compartment is available. This console is included when the Sport/Gypsy Model Option is ordered.

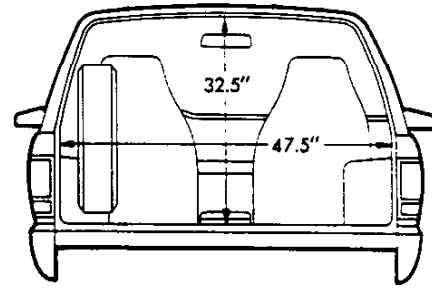
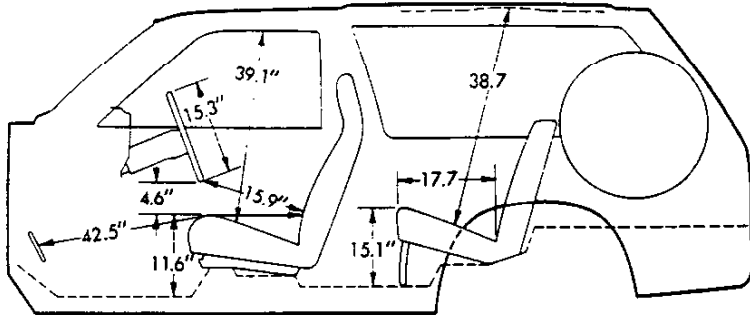


REAR FOLDING SEAT

This two-passenger seat is available on all models, and seat trim matches front seats when Custom Vinyl or Special Custom cloth is ordered. When High Country Sheepskin front seats are ordered, rear folding seat trim is Saddle Tan Special Custom cloth. The seat cushion pivots forward and down and the seat back folds on to it to provide a flat floor over the entire load area. Armrests are included and attached to wheel housings. A zipper pocket is also included below armrests when Tahoe/Sierra Classic or Sport/Gypsy trim is ordered. Two seat belts included.

S-10/15 BLAZER/JIMMY 2- & 4-WHEEL DRIVE

DIMENSIONS*

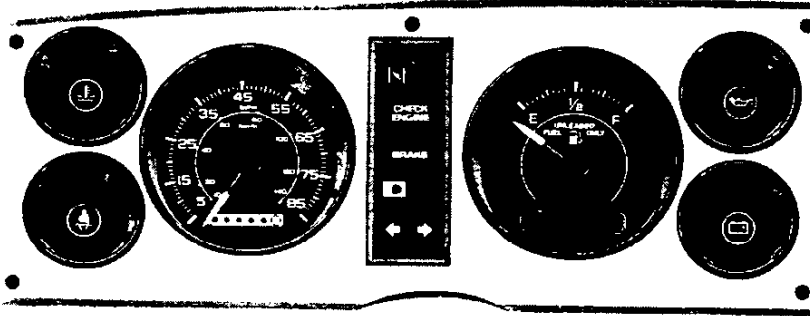


Glass Area (sq in)

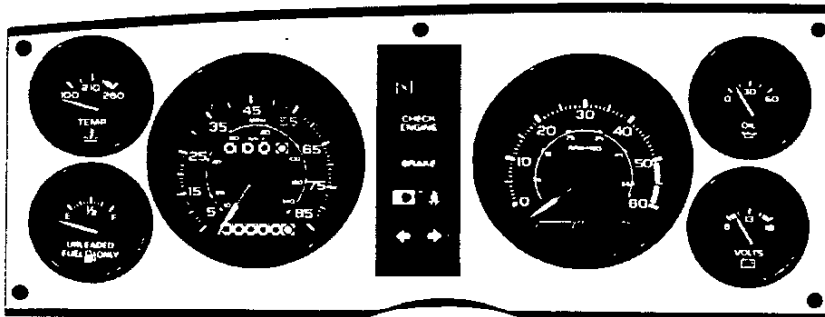
Windshield	1138.5	Rear side windows (each side)	752.0
Front side door window (each side)	409.5	Rear window	757.0

**All interior dimensions measured with front seat in rearmost position. Seat travel is 5"*

INSTRUMENT CLUSTER



Standard Cluster with warning lights for engine temperature, generator, and oil pressure.



Optional Cluster (RPO Z53) with volt-meter, engine temperature gage, oil pressure gage and trip odometer. Included with tachometer (RPO U16) and in Tahoe/Sierra Classic model options (RPO YC2) and Sport/Gypsy model options (RPO YC3) along with bright brush-finished trim, as illustrated. Cluster faceplate for standard models has argent finish. When the optional tachometer is ordered, it replaces the regular fuel gage, and another fuel gage is added.

Optional tachometer also shown in illustration.

S-10/15 BLAZER/JIMMY 2- & 4-WHEEL DRIVE INTERIOR AND EXTERIOR COLOR AVAILABILITY CHART

Please Note: Below are the interior trim color and exterior paint combinations recommended by Chevrolet GMC. The only available primary, secondary exterior color combinations are those shown in the chart below; however, any available interior trim color may be ordered with one of these exterior color combinations if that particular combination is desired by the customer.

INTERIOR COLORS		Decor	Blue	Carmine	Charcoal	Saddle Tan	ZY1 PAINT OPTIONAL STRIPING CHART RECOMMENDED COMBINATIONS Additional stripe combinations are available except where N/A is shown, provided the dealer orders (D60) as verification of: A B84 YC2 or YC3							
STANDARD INTERIOR Custom Vinyl High Back Bucket Seats		Std	XDD4	XRR4	XJJ4	XSS4								
TAHOE/SIERRA CLASSIC Custom Vinyl High Back Bucket Seats Special Custom Cloth High Back Bucket Seats High Country Sheepskin High Back Bucket Seats*		YC2	XDC4	XRR4	XJJ4	XSS4								
			HDD4	HRR4	HJJ4	HSS4								
SPORT/GYPSY (Reqs ZY6 or ZY7 Paint) Sport Cloth High Back Bucket Seats High Country Sheepskin High Back Bucket Seats*		YC3			SJJ4	SSS4								
EXTERIOR COLORS w/ZY1, ZY6, ZY7 or ZY8 PAINT	Primary	Secondary	RECOMMENDED INTERIOR TRIM COLORS				STRIPED COLORS							
			Black 09A	Blue Dark 28A	Gold 64A	Red 3A	Silver 17A	White 12A						
BLACK, MIDNIGHT	19	19		X										
BLACK, MIDNIGHT	19	19			X								X	
BLACK, MIDNIGHT	19	19				X								
Red, Apple	19	72		X	X									
Sand, Desert (Metallic)	19	64				X								
Silver (Metallic)	19	17		X	X									
White Frost	19	12		X	X									
BLUE, GALAXY (Metallic)	28	28	X		X		N/A	N/A		N/A			X	
BLUE, GALAXY (Metallic)	28	28				X	N/A	N/A	X	N/A				
Silver (Metallic)	28	17	X		X									
White Frost	28	12	X											
BLUE, LIGHT (Metallic)	21	21	X		X			X	N/A	N/A				
Black, Satin (Req ZY7)	21	09			X									
Blue, Galaxy (Metallic)	21	28	X											
White Frost	21	12	X											
BRONZE, INDIAN (Metallic)	66	66			X		X	N/A		N/A			N/A	
BRONZE, INDIAN (Metallic)	66	66				X			X	N/A			N/A	
Silver (Metallic)	66	17			X									
Sand, Desert (Metallic)	66	64				X								
White Frost	66	12				X								
RED, APPLE	72	72		X	X			N/A	X	N/A				
RED, APPLE	72	72			X	X	X	N/A		N/A				
Black, Midnight (N/A ZY7)	72	19		X	X									
Black, Satin (Req ZY7)	72	09		X	X									
Silver (Metallic)	72	17		X	X									
White Frost	72	12		X										
RED, CINNAMON	71	71			X		X	N/A		N/A			N/A	
RED, CINNAMON	71	71				X			N/A	X			N/A	
Black, Midnight (N/A ZY7)	71	19			X									
Black, Satin (Req ZY7)	71	09			X									
White Frost	71	12			X									
SAND, DESERT (Metallic)	64	64			X	X	X	N/A	N/A	N/A			N/A	
Black, Midnight (N/A ZY7)	64	19			X	X								
Black, Satin (Req ZY7)	64	09			X	X								
White Frost	64	12			X	X								
SILVER (Metallic)	17	17	X					X	N/A				N/A	
SILVER (Metallic)	17	17		X					N/A				N/A	
SILVER (Metallic)	17	17		X	X		X		N/A				N/A	
Black, Midnight (N/A ZY7)	17	19		X	X									
Black, Satin (Req ZY7)	17	09		X	X									
Blue, Galaxy (Metallic)	17	28	X											
Red, Apple	17	72		X	X									
White Frost	17	12	X	X	X									
TAN, DOESKIN	61	61			X		X	N/A		N/A			N/A	
TAN, DOESKIN	61	61				X			N/A	X			N/A	
Black, Midnight (N/A ZY7)	61	19				X								
Black, Satin (Req ZY7)	61	09			X	X								
Sand, Desert (Metallic)	61	64				X								
White Frost	61	12				X								
WHITE, FROST	12	12						X						N/A
WHITE, FROST	12	12		X										N/A
WHITE, FROST	12	12			X			X						N/A
WHITE, FROST	12	12				X	X			X				N/A
Black, Midnight (N/A ZY7)	12	19			X									
Black, Satin (Req ZY7)	12	09			X									
Blue, Galaxy (Metallic)	12	28	X											
Red, Apple	12	72		X										
Sand, Desert (Metallic)	12	64			X	X								
Silver (Metallic)	12	17	X		X									

*With YC2 Tahoe/Sierra Classic, rear seat trim is Special Custom Cloth, with YC3 Sport/Gypsy rear seat trim is Sport Cloth

S-10/15 BLAZER/JIMMY 2- & 4-WHEEL DRIVE
STRIPE CHART FOR ZY6 CUSTOM TWO-TONE

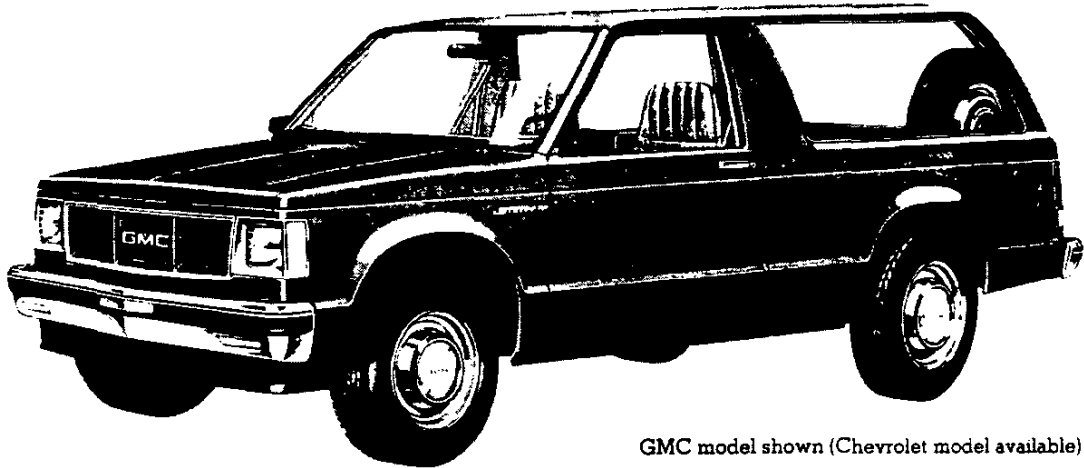
INTERIOR TRIM COLOR			BLUE	CARMINE	CHARCOAL	SADDLE TAN
EXTERIOR PAINT COLOR	Primary	Secondary	STRIPE COLORS			
BLACK, MIDNIGHT/Red, Apple	19	72	*Silver	Silver	Silver	*Silver
BLACK, MIDNIGHT/Sand, Desert (Met)	19	64	*Orange/Yellow	*Orange/Yellow	*Orange/Yellow	Orange/Yellow
BLACK, MIDNIGHT/Silver (Met)	19	17	Blue	Blue	Blue	*Red
BLACK, MIDNIGHT/White, Frost	19	12	*Blue	Red	Red	*Orange/Yellow
BLUE, GALAXY (MET)/Silver (Met)	28	17	Blue	*Red	Blue	*Blue
BLUE, GALAXY (MET)/White, Frost	28	12	Blue	*Red	*Blue	*Gold
BLUE, LIGHT (MET)/Blue, Galaxy (Met)	21	28	Blue	*Silver	*Silver	*Blue
BLUE, LIGHT (MET)/White, Frost	21	12	Blue	Red	*Blue	*Blue
BRONZE, INDIAN (MET)/Silver (Met)	66	17	*Orange/Yellow	*Orange/Yellow	Orange/Yellow	*Orange/Yellow
BRONZE, INDIAN (MET)/Sand, Desert (Met)	66	64	*Orange/Yellow	*Orange/Yellow	*Orange/Yellow	Orange/Yellow
BRONZE, INDIAN (MET)/White, Frost	66	12	*Silver	*Gold	*Orange/Yellow	Gold
RED, APPLE/Black, Midnight	72	19	*Silver	Red	Silver	*Red
RED, APPLE/Silver (Met)	72	17	*Red	Red	Red	*Red
RED, APPLE/White, Frost	72	12	*Silver	Silver	*Silver	*Gold
RED, CINNAMON/Black, Midnight	71	19	*Silver	*Red	Silver	*Red
RED, CINNAMON/White, Frost	71	12	*Silver	*Red	Red	*Gold
SAND, DESERT (MET)/Black, Midnight	64	19	*Gold	*Gold	*Orange/Yellow	Gold
SAND, DESERT (MET)/White, Frost	64	12	*Gold	*Gold	*Gold	Gold
SILVER (MET)/Black, Midnight	17	19	*Blue	Red	Red	*Silver
SILVER (MET)/Blue, Galaxy (Met)	17	28	Blue	*Silver	*Silver	*Silver
SILVER (MET)/Red, Apple	17	72	*Silver	Red	Silver	*Silver
SILVER MET/White, Frost	17	12	Blue	Red	Red	*Red
TAN, DOESKIN/Black, Midnight	61	19	*Gold	*Red	*Gold	Gold
TAN, DOESKIN/Sand, Desert (Met)	61	64	*Gold	*Orange/Yellow	*Orange/Yellow	Orange/Yellow
TAN, DOESKIN/White, Frost	61	12	*Gold	*Red	*Orange/Yellow	Gold
WHITE, FROST/Black, Midnight	12	19	Blue	Red	Red	*Red
WHITE, FROST/Blue, Galaxy (Met)	12	28	Blue	*Blue	*Blue	*Blue
WHITE, FROST/Red, Apple	12	72	*Silver	Silver	*Silver	*Gold
WHITE, FROST/Sand, Desert (Met)	12	64	*Orange/Yellow	Orange/Yellow	Orange/Yellow	Orange/Yellow
WHITE, FROST/Silver (Met)	12	17	Blue	Red	Red	*Red

*Stripe color/trim color combination available but not recommended.

S-10/15 BLAZER/JIMMY 2- & 4-WHEEL DRIVE

SOLID AND TWO-TONE* EXTERIOR COLOR COMBINATIONS

The application of paint for solid and two-tone exterior color combinations is shown below.

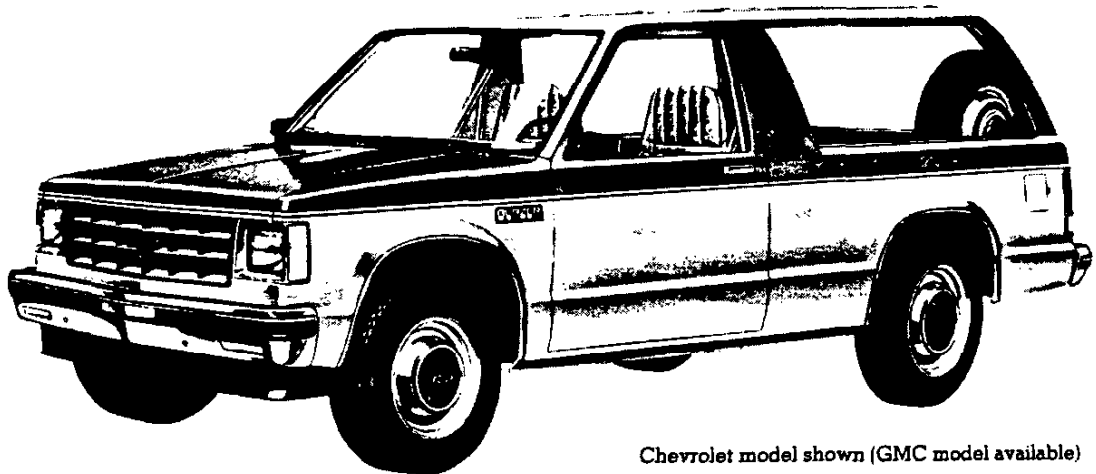


GMC model shown (Chevrolet model available)

SOLID COLOR

Solid paint (ZY1) is standard on all models (except Sport/Gypsy). All painted areas of the body and front end sheet metal are the same color. Tailgate lettering for base models is

silver when Galaxy Blue, Indian Bronze, Midnight Black, or Apple Red exterior colors are specified and black for all other exterior colors.



Chevrolet model shown (GMC model available)

CUSTOM TWO-TONE

Custom two-tone paint (ZY6) is available on all models. The areas above the belt styling crease line are painted the primary paint color. The areas below that line are painted the secondary color. A color-keyed decal stripe is applied at the belt styling crease line to cover the paint break

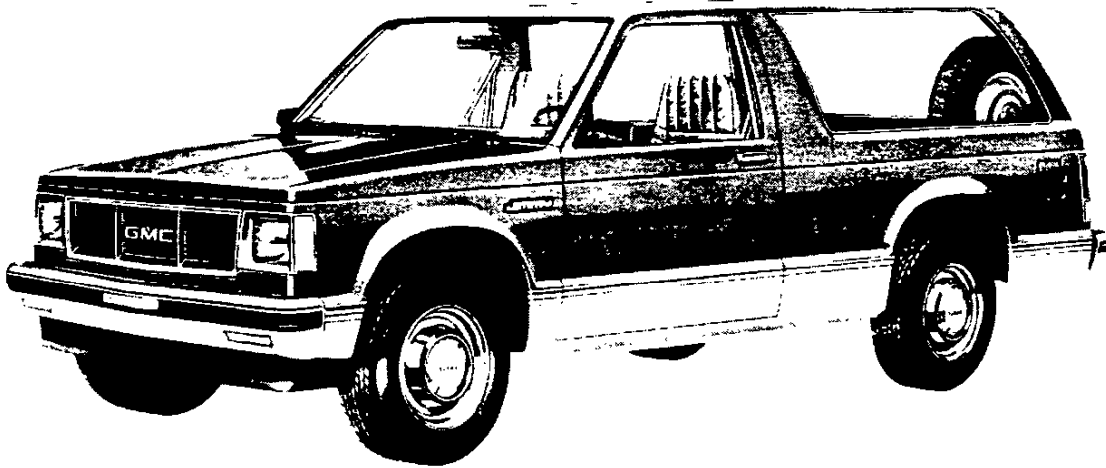
(See color stripe chart on page H). Tailgate lettering for base and Durango/High Sierra models is silver when Galaxy Blue, Indian Bronze, Midnight Black, or Apple Red secondary exterior colors are specified and black for all other secondary colors.

*Optional at extra cost

S-10/15 BLAZER/JIMMY 2- & 4-WHEEL DRIVE

SOLID AND TWO-TONE* EXTERIOR COLOR COMBINATIONS

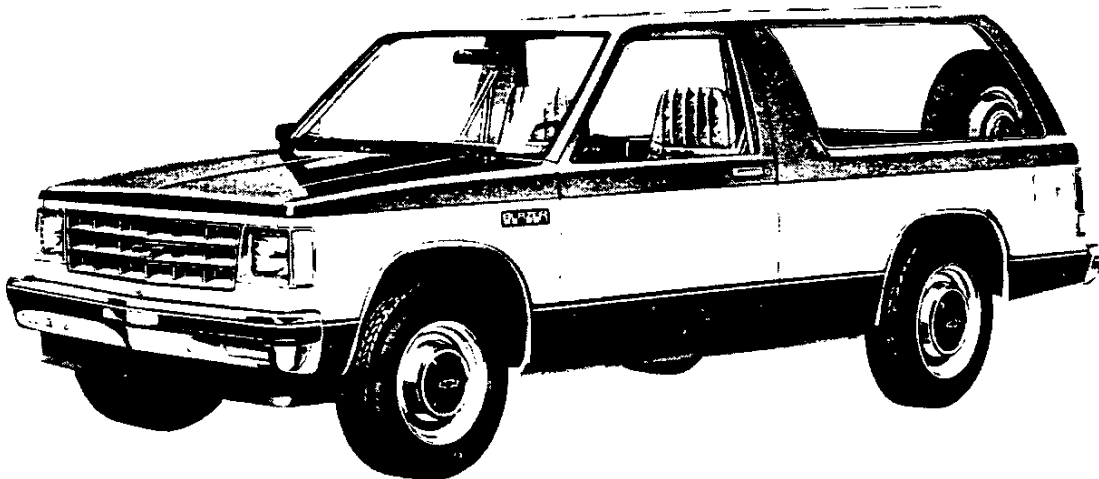
The application of paint for solid and two-tone exterior color combinations is shown below.



SPORT TWO-TONE

Sport two-tone paint (ZY7), which provides a lower accent two-tone scheme, is available on base and Tahoe/Sierra Classic models, and is included when the Sport/Gypsy Model Option (YC3) is ordered. A wide, four stripe decal is included on base models, and is applied below the lower styling crease lines. The decal color matches the secondary paint choice, and is applied over the paint break line in such a way that the primary color paint shows through the clear areas to contrast

with the decal colors. The primary color choice is applied to the areas above the bottom stripe of the decal, and the secondary color is applied to the areas below the decal. RPO B84 Body Side Moldings may be ordered with ZY7 on base models, if desired (at extra cost), and will replace the striping decal. Tailgate lettering for base models is silver when Galaxy Blue, Indian Bronze, Midnight Black, or Apple Red exterior colors are specified and black for all other exterior colors.



SPECIAL TWO-TONE

Special two-tone paint (ZY8), which provides a mid-accent two-tone scheme, is available on base and Tahoe/Sierra Classic models and includes B84 body side and wheel opening moldings (except on Tahoe/Sierra Classic models where already included) which are applied below the lower styling crease lines. The areas below the molding and above

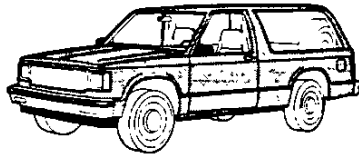
the belt styling crease line are painted the primary paint color. The areas between the molding and the belt styling crease line are painted the secondary color. Tailgate lettering for base models is silver when Galaxy Blue, Indian Bronze, Midnight Black, or Apple Red secondary exterior colors are specified and black for all other exterior colors.

*Optional at extra cost

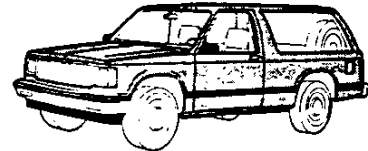
S-10 BLAZER 2- & 4-WHEEL DRIVE

Paint Applications

SOLID PAINT-ZY1
(w/o Optional Striping)

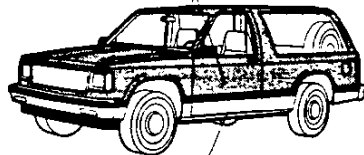


SOLID PAINT-ZY1
(w/Optional Striping)



SPORT TWO-TONE PAINT-ZY7
(Includes body side stripe that matches secondary color w/o YC3 or YC2)

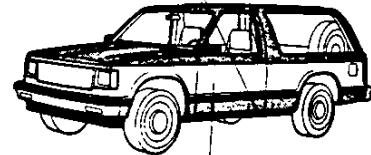
Primary Body Color



Secondary Body Color

SPECIAL TWO-TONE PAINT-ZY8
(Includes B84 Body Side and Bright Wheel Opening Moldings)

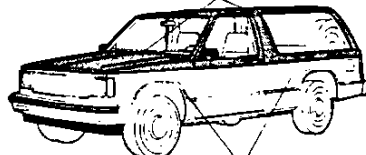
Primary Body Color



Secondary Body Color

***CUSTOM TWO-TONE PAINT-ZY6**
(Includes Decal Striping)

Primary Body Color

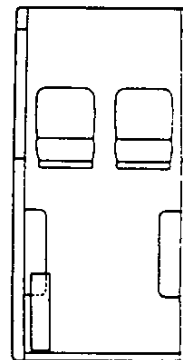


Secondary Body Color

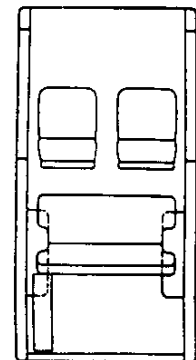
*Refer to page 10 for stripe colors

AVAILABLE SEATING ARRANGEMENTS

(See Option Section For Restrictions)



Standard



w/AM7

S-10 BLAZER 2- & 4-WHEEL DRIVE INTERIOR AND EXTERIOR COLOR AVAILABILITY CHART

Please Note: Below are the interior trim color and exterior paint combinations recommended by Chevrolet. The only available primary/secondary exterior color combinations are those shown in the chart below, however, any available interior trim color may be ordered with one of these exterior color combinations if that particular combination is desired by the customer.

INTERIOR COLORS		Decor	Blue	Carmine	Charcoal	Saddle Tan							
STANDARD INTERIOR Custom Vinyl High Back Bucket Seats		Std	XDD4	XRR4	XJJ4	XSS4							
TAHOE Custom Vinyl High Back Bucket Seats		YC2	XDD4	XRR4	XJJ4	XSS4							
Special Custom Cloth High Back Bucket Seats			HDD4	HRR4	HJJ4	HSS4							
High Country Sheepskin High Back Bucket Seats*						BSS4							
SPORT (Reqs ZY6 or ZY7 Paint) Sport Cloth High Back Bucket Seats		YC3			SJJ4	SSS4	ZY1 PAINT OPTIONAL STRIPING CHART RECOMMENDED COMBINATIONS Additional stripe combinations are available except where N/A is shown, provided the dealer orders (D60) as verification (N/A B84, YC2 or YC3)						
High Country Sheepskin High Back Bucket Seats*						BSS4							
EXTERIOR COLORS w/ ZY1, ZY6, ZY7 or ZY8 PAINT	Primary	Secondary	RECOMMENDED INTERIOR TRIM COLORS				STRIPE COLORS						
			Black D9A	Blue Dark 28A	Gold 64A	Red 72A	Silver 17A	White 12A					
BLACK, MIDNIGHT	19	19		X				N/A		X			
BLACK, MIDNIGHT	19	19			X			N/A			X		
BLACK, MIDNIGHT	19	19				X		N/A	X				
Red, Apple	19	72		X	X								
Sand, Desert (Metallic)	19	64				X							
Silver (Metallic)	19	17		X	X								
White, Frost	19	12		X	X								
BLUE, GALAXY (Metallic)	28	28	X		X		N/A	N/A		N/A	X		
BLUE, GALAXY (Metallic)	28	28				X	N/A	N/A	X	N/A			
Silver (Metallic)	28	17	X		X								
White, Frost	28	12	X										
BLUE, LIGHT (Metallic)	21	21	X		X			X	N/A	N/A			
Black, Satin (Req. ZY7)	21	09			X								
Blue, Galaxy (Metallic)	21	28	X										
White, Frost	21	12	X										
BRONZE, INDIAN (Metallic)	66	66			X		X	N/A		N/A	N/A		
BRONZE, INDIAN (Metallic)	66	66				X		N/A	X	N/A	N/A		
Silver (Metallic)	66	17			X								
Sand, Desert (Metallic)	66	64				X							
White, Frost	66	12				X							
RED, APPLE	72	72		X				N/A	X	N/A			
RED, APPLE	72	72			X	X	X	N/A		N/A			
Black, Midnight (N/A ZY7)	72	19		X	X								
Black, Satin (Req. ZY7)	72	09		X	X								
Silver (Metallic)	72	17		X	X								
White, Frost	72	12		X									
RED, CINNAMON	71	71			X		X	N/A		N/A	N/A		
RED, CINNAMON	71	71				X		N/A	X	N/A	N/A		
Black, Midnight (N/A ZY7)	71	19			X								
Black, Satin (Req. ZY7)	71	09			X								
White, Frost	71	12			X								
SAND, DESERT (Metallic)	64	64			X	X	X	N/A	N/A	N/A	N/A		
Black, Midnight (N/A ZY7)	64	19				X							
Black, Satin (Req. ZY7)	64	09			X	X							
White, Frost	64	12				X							
SILVER (Metallic)	17	17	X					X	N/A		N/A		
SILVER (Metallic)	17	17		X					N/A	X	N/A		
SILVER (Metallic)	17	17			X		X		N/A		N/A		
Black, Midnight (N/A ZY7)	17	19		X	X								
Black, Satin (Req. ZY7)	17	09		X	X								
Blue, Galaxy (Metallic)	17	28	X										
Red, Apple	17	72		X	X								
White, Frost	17	12	X	X	X								
TAN, DOESKIN	61	61			X		X	N/A		N/A	N/A		
TAN, DOESKIN	61	61				X		N/A	X	N/A	N/A		
Black, Midnight (N/A ZY7)	61	19				X							
Black, Satin (Req. ZY7)	61	09			X	X							
Sand, Desert (Metallic)	61	64				X							
White, Frost	61	12				X							
WHITE, FROST	12	12	X					X					N/A
WHITE, FROST	12	12		X						X			N/A
WHITE, FROST	12	12			X		X						N/A
WHITE, FROST	12	12				X			X				N/A
Black, Midnight (N/A ZY7)	12	19			X								
Black, Satin (Req. ZY7)	12	09			X								
Blue, Galaxy (Metallic)	12	28	X										
Red, Apple	12	72		X									
Sand, Desert (Metallic)	12	64			X	X							
Silver (Metallic)	12	17	X		X								

*With YC2 Tahoe, rear seat trim is Special Custom Cloth; with YC3 Sport rear seat trim is Sport Cloth

MODEL AND BODY

Description	Model No	Body	Wheelbase
2-WHEEL-DRIVE GASOLINE MODELS			
=Tailgate	CS10516	E55	100.5"

Description	Model No	Body	Wheelbase
4-WHEEL-DRIVE GASOLINE MODELS			
#Tailgate	CT10516	E55	100.5"

=Reqs N40 Power Steering or N51
Power Steering Not Desired And AM7 Folding Seat
or YG4 Seat Not Desired

EMISSIONS (MUST ORDER ONE)

- _____ NA5 Standard Emission Equipment
- _____ NA6 High Altitude Emission Equipment
- _____ YF5 California Emission Requirements

POWER TEAMS (MUST ORDER ENGINE, TRANSMISSION AND REAR AXLE)

ENGINE	TRANSMISSION			AXLES		
	4-SP	5-SP	AUTO	3.42	3.73	4.11
W/NA5 STANDARD EMISSION EQUIPMENT						
—S10516						
LN8 L4 2.5 Liter EFI	MM4			—	GQ1	H04
			MX0	—	—	GQ1
				—	GQ1	H04
LR2 V6 2.8 Liter 2BBL (Reqs N40 Steering)	MM4			GQ1	GT4	—
		MM5		—	#GQ1	H04
			MX0	GQ1	GT4	—
—T10516						
LN8 L4 2.5 Liter EFI	MM4			—	*GQ1	H04
		MM5		—	—	GQ1
			MX0	—	—	GQ1
✓LR2 V6 2.8 Liter 2BBL (Reqs N40 Steering)	MM4			*GQ1	GT4	—
		MM5		—	*GQ1	H04
			MX0	—	*GQ1	H04
W/NA6 HIGH ALTITUDE EMISSION EQUIPMENT						
—S10516						
LN8 L4 2.5 Liter EFI	MM4		MX0	—	—	GQ1
LR2 V6 2.8 Liter 2BBL (Reqs N40 Steering)	MM4		MX0	—	GQ1	—
		MM5		—	#GQ1	H04
—T10516						
LN8 L4 2.5 Liter EFI	MM4	MM5	MX0	—	—	GQ1
LR2 V6 2.8 Liter 2BBL (Reqs N40 Steering)	MM4	MM5	MX0	—	*GQ1	\$H04
W/YF5 CALIFORNIA EMISSION REQUIREMENTS						
—S10516						
LN8 L4 2.5 Liter EFI	MM4		MX0	—	GQ1	H04
				—	—	GQ1
LR2 V6 2.8 Liter 2BBL (Reqs N40 Steering)	MM4			GQ1	#GT4	—
		MM5		—	#GQ1	H04
			MX0	GQ1	GT4	—
—T10516						
LN8 L4 2.5 Liter EFI	MM4			—	*GQ1	H04
		MM5	MX0	—	—	GQ1
LR2 V6 2.8 Liter 2BBL (Reqs N40 Steering)	MM4			—	*GQ1	\$H04
		MM5		—	*GQ1	H04
			MX0	—	*GQ1	H04

*N/A P235/75R15 Tires
\$Reqs P235/75R15 Tires

N/A P195/75 R15 TIRES

FEATURE OPTION: YC3

Sport Equipment (Reqs ZY6 or ZY7 Paint) (Incls Lower Body Color Front and Rear Bumpers w/Rub Strips, Reupholstering Seat Backs and Console, Gage Package with Trip Odometer, Spare Tire Cover, Visor Mirror, Body Side and Black Wheel Opening Mdlgs) (Incls Rally Wheels on S10) (Incls Wheel Trim Rings on T10)

QUICK-SPEC

EMISSION, ENGINE, TRANSMISSION, AXLE AND TIRE <i>MUST BE</i> ENTERED AS ADDITIONS TO THESE QUICK-SPECS.		B S A 1	B S A 2	B S A 3
Sport Equipment	YC3	x	x	x
Air Conditioning	C60	x	x	x
Body: Standard	E55	x	x	x
Mirrors: Black	D44	x	x	x
Radio: ETR AM/FM Stereo	UU9	x	x	N/I
Seat: Rear, Folding	AM7	x	x	x
Steering: Power	N40	x	x	x
Steering Wheel: Comfortilt	N33	x	x	x
Tank, Fuel	NK2	x	x	x
Battery: Heavy-Duty	UA1		x	x
Floor Coverings: Front	B32		x	x
Floor Coverings: Rear	B33		x	x
Shield, Transfer Case (T10 only)	NY7		x	x
Speed Control, Electronic	K34		x	x
Tailgate Window Release: Power	AU6		x	x
Windshield Wiper System	CD4		x	x
Carrier, Luggage	V54			x
Deflector, Air	C51			x
Defogger, Rear Window	C49			x
Headlamps, Halogen	TT4			x
Lamp, Engine Compartment	U26			x
Operating Convenience Pkg	ZQ2			x
Radio: ETR AM/FM Stereo & Stereo Cassette Tape, Seek-Scan, & Clock	UX1			x
Speakers: Premium Dual Rear	U66			x

PLEASE REVIEW OPTION RESTRICTIONS BEFORE ORDERING

Q-S OPTION

- (1) K46 AIR CLEANER: (Reqs LR2 Eng)
- (1) C60 AIR CONDITIONING: (Reqs N40 Steering) (w/o C49 Defogger Incls K81 Gen) (w/o V02 Cooling Incls V01 Cooling)
- (2) G80 AXLE, REAR: Locking Differential
- (2) UA1 BATTERY: Heavy-Duty, 515 Cold Cranking Amps Delco Freedom (Incl w/V10 Cold Climate)
- (3) V28 BUMPER EQUIPMENT: Bumper Guards, Front only, Black
- (3) V54 CARRIER, LUGGAGE: Painted Black
- (3) Z71 CHASSIS EQUIPMENT: Off Road Package (T10 only) (N/A F51 Shocks) (Reqs QEB Tires) (Incls NY7 Shield, V76 Tow Hooks and ZK5 Spare)
- (3) V10 COLD-CLIMATE PACKAGE: (Incls K81 Gen and UA1 Battery)
- (3) KC4 COOLING SYSTEM: Heavy-Duty
- (3) V01 Engine Oil Cooler (S10 only) (Reqs LR2 Eng, MX0 Trans and V01 or V02 Cooling)
- (3) V02 Radiator (N/A V02 Cooling) (Incl w/C60 Air)
- (3) C51 Radiator and Transmission Oil Cooler (Reqs LR2 Eng and MX0 Trans)
- (3) C49 DEFLECTOR, AIR
- (3) AU3 DEFOGGER, REAR WINDOW: Electric (w/o C60 Air Incls K81 Gen)
- (2) B32 DOOR LOCK SYSTEM, POWER: Side Door (Incl w/ZQ2 Conv Pkg)
- (2) B33 FLOOR COVERING: Mats, Removable Color-Keyed
- (2) U16 Front
- (2) K81 Rear
- (2) U16 GAGE, TACHOMETER
- (2) K81 GENERATOR: 66-Amp Delcotron (N/A C60 Air w/C49 Defogger) (Incl w/C60 Air, V10 Cold Climate Pkg or C49 Defogger)
- (2) AA3 GLASS:
- (2) AJ1 Deep Tinted w/Light Tinted Rear Window (N/A AJ1 Glass)
- (3) AJ1 Deep Tinted
- (3) TT4 HEADLAMPS, HALOGEN
- (3) K05 HEATER, ENGINE BLOCK
- (3) U26 LAMP: Engine Compartment
- (1) D44 MIRRORS: Exterior, Below-Eye-Line Type, Black

PLEASE REVIEW OPTION RESTRICTIONS BEFORE ORDERING

Q-S	OPTION	
—	B93	MOLDINGS: Door Edge Guard
(3)	ZQ2	OPERATING CONVENIENCE PACKAGE: (Incls AU3 Door Locks and A31 Windows)
—	B3W	PRELIMINARY PRICE INFORMATION
		RADIO EQUIPMENT:
—	U63	AM Radio
—	U69	AM/FM Radio
—	UL7	AM/FM Radio w/Clock
(1)	UU9	Electronically Tuned AM/FM Stereo Radio
—	UL1	Electronically Tuned AM/FM Stereo Radio w/Clock
(3)	UX1	Electronically Tuned AM Stereo/FM Stereo Radio & Stereo Cassette Tape, Seek-Scan, Clock & Graphic Equalizer (Incls U66 Speakers)
—	UM6	Electronically Tuned AM/FM Stereo Radio & Stereo Cassette Tape w/Seek-Scan and Clock (Incls U66 Speakers)
(3)	U66	Speakers, Premium Dual Rear (Reqs UL1 or UU9 Radio) (Incl w/UM6 or UX1 Radio)
		SEATING: (MUST ORDER AM7 or YG4 Seat)
(1)	AM7	Rear, Folding 2-Passenger
—	YG4	Rear Seat Not Desired (N/A AM7 Seat)
(2)	NY7	SHIELD, TRANSFER CASE: (T10 only) (Incl w/Z71 Chassis Equip)
—	F51	SHOCK ABSORBERS: Front and Rear, Heavy-Duty (N/A Z71 Chassis Equip) (Incl w/F60 Susp.)
		SPARE TIRE, FULL SIZE: (Replaces Standard Compact Spare)
—	ZK4	Highway/All-Seasons (N/A QJL, QJT or QEB Tires)
—	ZK5	On-Off Road (S10 Reqs Q1C, QJT or QJL Tires) (T10 Reqs QJL, QJT or QEB Tires) (Incl w/Z71 Chassis Equip)
(2)	K34	SPEED CONTROL, ELECTRONIC
		STEERING:
—	N51	Power Not Desired
(1)	N40	Power
(1)	N33	STEERING WHEEL: Comfortilt
—	F60	SUSPENSION EQUIPMENT: Front, Heavy-Duty (T10 only) (N/A Z71 Chassis Equip) (Incls F51 Shocks) (Recommended for snowplow type usage only)
(2)	AU6	TAILGATE WINDOW RELEASE, POWER
(1)	NK2	TANK, FUEL: Approx 20 Gallons
		TIRES: (B/W: Blackwall, W/W: Whitewall, W/L: White Lettered) (Incls Compact Spare Tire)
		All-Season Steel Belted Radial Ply (Front and Rear)
—	QAR	P195/75R-15 B/W
—	QAS	P195/75R-15 W/W
—	QCE	P205/75R-15 B/W
—	QCF	P205/75R-15 W/L
		Highway Fiberglass Belted Radial Ply (Front and Rear)
—	QYP	P195/75R-15 B/W
		Steel Belted Radial Ply (Front-Highway and Rear On-Off Road) (CS10516 only)
—	Q1C	P205/75R-15 B/W
		On-Off Road Steel Belted Radial Ply (Front and Rear) (N/A ZK4 Spare)
—	QJT	P205/75R-15 B/W
—	QJL	P205/75R-15 W/L
—	QEB	P235/75R-15 W/L (CT10516 only) (Reqs ZK5 Spare) (See Power Teams Chart For Axle Restrictions)
—	V76	TOWING DEVICE: Two Front Tow Hooks (T10 only) (Incl w/Z71 Chassis Equip)
—	VR2	TRAILER HITCH: Deadweight Type (N/A Z82 Trailing) (Incl w/Z72 Trailing)
—	Z72	TRAILERING PACKAGE: (N/A Z82 Trailing) (Reqs MX0 Trans, V01 or V02 Cooling or C60 Air) (w/LN8 Eng Reqs 4.11 Rear Axle)
—	Z82	TRAILERING SPECIAL EQUIPMENT: Heavy-Duty (Reqs LR2 Eng, MX0 Trans, V02 Trans Cooling, N40 Steering and 3.73 or 4.11 Rear Axle) (T10 w/QEB Tires Reqs 4.11 Rear Axle) (w/o C60 Air, V10 Cold Climate Pkg or C49 Defogger Reqs K81 Gen) (Refer Trailing Guide)
—	N79	WHEEL, SPARE: Aluminum, Cast (T10 only) (Reqs N90 Wheels and ZK4 or ZK5 Spare)
—	N90	WHEELS: Aluminum, Cast (T10 only) (N/A QAR, QAS or QYP P195 Tires)
—	A31	WINDOWS: Power, Side Door (Incl w/ZQ2 Conv Pkg)
(2)	CD4	WINDSHIELD WIPER SYSTEM: Intermittent

FEATURE OPTION: YC2

Tahoe Equipment (Incls Visor Mirror, Gage Package with Trip Odometer, Spare Tire Cover, Wheel Trim Rings and Body Side and Bright Wheel Opening Mldgs)

QUICK-SPEC

EMISSION, ENGINE, TRANSMISSION, AXLE AND TIRE <i>MUST BE</i> ENTERED AS ADDITIONS TO THESE QUICK-SPECS		B T A 1	B T A 2	B T A 3
Tahoe Equipment	YC2	x	x	x
Air Conditioning	C60	x	x	x
Body: Standard	E55	x	x	x
Console	D55	x	x	x
Mirrors: Bright	D45	x	x	x
Radio: ETR AM/FM Stereo	UU9	x	x	N/I
Seat: Rear, Folding	AM7	x	x	x
Steering: Power	N40	x	x	x
Steering Wheel: Comfortilt	N33	x	x	x
Tank, Fuel	NK2	x	x	x
Battery: Heavy-Duty	UA1		x	x
Floor Coverings: Front	B32		x	x
Floor Coverings: Rear	B33		x	x
Speed Control, Electronic	K34		x	x
Shield: Transfer Case (T10 only)	NY7		x	x
Tailgate Window Release: Power	AU6		x	x
Windshield Wiper System	CD4		x	x
Deflector, Air	C51			x
Defogger, Rear Window	C49			x
Headlamps, Halogen	TT4			x
Lamp, Engine Compartment	U26			x
Operating Convenience Pkg	ZQ2			x
Radio: ETR AM/FM Stereo & Stereo Cassette Tape, Seek-Scan & Clock	UX1			x
Speakers: Premium Dual Rear	U66			x

PLEASE REVIEW OPTION RESTRICTIONS BEFORE ORDERING

Q.S.	OPTION
---	K46 AIR CLEANER: (Reqs LR2 Eng)
(1)	C60 AIR CONDITIONING: (Reqs N40 Steering) (w/o C49 Defogger Incls K81 Gen) (w/o V02 Cooling Incls V01 Cooling)
---	G80 AXLE, REAR: Locking Differential
(2)	UA1 BATTERY: Heavy-Duty, 515 Cold Cranking Amps Delco Freedom (Incl w/V10 Cold Climate)
---	BUMPER EQUIPMENT:
---	VE6 Bumpers, Front and Rear Color-Keyed w/Rub Strips (Reqs ZY6, ZY7 or ZY8 Paint)
---	V28 Bumper Guards, Front only, Black
---	CARRIER, LUGGAGE:
---	V54 Painted, Black
---	V55 Bright
---	Z71 CHASSIS EQUIPMENT: Off Road Package (T10 only) (N/A F51 Shocks) (Reqs QEB Tires) (Incls NY7 Shield, ZK5 Spare and V76 Tow Hooks)
---	V10 COLD CLIMATE PACKAGE: (Incls K81 Gen and UA1 Battery)
(1)	D55 CONSOLE
---	COOLING SYSTEM: Heavy-Duty
---	KC4 Engine Oil Cooler (S10 only) (Reqs LR2 Eng, MX0 Trans and V01 or V02 Cooling)
---	V01 Radiator (N/A V02 Cooling) (Incl w/C60 Air)
---	V02 Radiator and Transmission Oil Cooler (Reqs LR2 Eng and MX0 Trans)
(3)	C51 DEFLECTOR, AIR
(3)	C49 DEFOGGER, REAR WINDOW: Electric (w/o C60 Air Incls K81 Gen)
---	AU3 DOOR LOCK SYSTEM, POWER: Side Door (Incl w/ZQ2 Conv Pkg)
---	FLOOR COVERING: Mats, Removable Color-Keyed
(2)	B32 Front
(2)	B33 Rear
---	U16 GAGE, TACHOMETER
---	K61 GENERATOR: 66-Amp Delcotron (N/A C60 Air w/C49 Defogger) (Incl w/C60 Air, V10 Cold Climate Pkg or C49 Defogger)
---	GLASS:
---	AA3 Deep Tinted w/Light Tinted Rear Window (N/A AJ1 Glass)
---	AJ1 Deep Tinted
(3)	TT4 HEADLAMPS, HALOGEN
---	K05 HEATER, ENGINE BLOCK
(3)	U26 LAMP: Engine Compartment
---	MIRRORS: Exterior, Below Eye-Line Type.
---	D44 Black
(1)	D45 Bright
---	MOLDINGS:
---	B93 Door Edge Guard
---	B74 Wheel Opening, Black

PLEASE REVIEW OPTION RESTRICTIONS BEFORE ORDERING

Q-S	OPTION	
(3)	ZQ2	OPERATING CONVENIENCE PACKAGE: (Incls AU3 Door Locks and A31 Windows)
—	B3W	PRELIMINARY PRICE INFORMATION
—		RADIO EQUIPMENT:
—	U63	AM Radio
—	U69	AM/FM Radio
—	UL7	AM/FM Radio w/Clock
(1)	UU9	Electronically Tuned AM/FM Stereo Radio
—	UL1	Electronically Tuned AM/FM Stereo Radio w/Clock
(3)	UX1	Electronically Tuned AM Stereo/FM Stereo Radio & Stereo Cassette Tape, Seek-Scan, Clock & Graphic Equalizer (Incls U66 Speakers)
—	UM6	Electronically Tuned AM/FM Stereo Radio & Stereo Cassette Tape w/Seek-Scan and Clock (Incls U66 Speakers)
(3)	U66	Speakers, Premium Dual Rear (Reqs UL1 or UU9 Radio) (Incl w/UM6 or UX1 Radio)
(1)	AM7	SEATING: (MUST ORDER AM7 or YG4 Seat) Rear, Folding, 2-Passenger
—	YG4	Rear Seat Not Desired (N/A AM7 Seat)
—	A78	SEAT EQUIPMENT: Seat Backs, Reclining
(2)	NY7	SHIELD, TRANSFER CASE: (T10 only) (Incl w/Z71 Chassis Equip)
—	F51	SHOCK ABSORBERS: Front and Rear, Heavy-Duty (N/A Z71 Chassis Equip) (Incl w/F60 Susp)
—	ZK4	SPARE TIRE, FULL SIZE: (Replaces Standard Compact Spare) Highway (N/A QJL, QJT or QEB Tires)
—	ZK5	On-Off Road (S10 Reqs Q1C, QJL or QJT Tires) (T10 Reqs QEB, QJT or QJL Tires) (Incl w/Z71 Chassis Equip)
(2)	K34	SPEED CONTROL, ELECTRONIC
—	N51	STEERING: Power Not Desired
(1)	N40	Power
(1)	N33	STEERING WHEEL: Comfortilt
—	F60	SUSPENSION EQUIPMENT: Front, Heavy-Duty (T10 only) (N/A Z71 Chassis Equip) (Incls F51 Shocks) (Recommended for snowplow type usage only)
(2)	AU6	TAILGATE WINDOW RELEASE, POWER
(1)	NK2	TANK, FUEL: Approx 20 Gallons
—		TIRES: (B/W: Blackwall, W/W: Whitewall, W/L: White Lettered) (Incls Compact Spare Tire)
—	QAR	All-Season Steel Belted Radial Ply (Front and Rear) P195/75R-15 B/W
—	QAS	P195/75R-15 W/W
—	QCE	P205/75R-15 B/W
—	QCF	P205/75R-15 W/L
—	QYP	Highway Fiberglass Belted Radial Ply (Front and Rear) P195/75R15 B/W
—	Q1C	Steel Belted Radial Ply (Front-Highway and Rear On-Off Road) (CS10516 only) P205/75R-15 B/W
—	QJT	On-Off Road Steel Belted Radial Ply (Front and Rear) (N/A ZK4 Spare) P205/75R-15 B/W
—	QJL	P205/75R-15 W/L
—	QEB	P235/75R-15 W/L (CT10516 only) (Reqs ZK5 Spare) (See Power Teams Chart for Axle Restrictions)
—	V76	TOWING DEVICE: Two Front Tow Hooks (T10 only) (Incl w/Z71 Chassis Equip)
—	VR2	TRAILER HITCH: Deadweight Type (N/A Z82 Trailing) (Incl w/Z72 Trailing)
—	Z72	TRAILERING PACKAGE: (N/A Z82 Trailing) (Reqs MX0 Trans and V01 or V02 Cooling, or C60 Air) (w/LN8 Eng Reqs 4.11 Rear Axle)
—	Z82	TRAILERING SPECIAL EQUIPMENT: Heavy-Duty (Reqs LR2 Eng, MX0 Trans, V02 Trans Cooling, N40 Steering and 3.73 or 4.11 Rear Axle) (T40 w/QEB Tires Reqs 4.11 Rear Axle) (w/o C60 Air, C49 Defogger or V10 Cold Climate Reqs K81 Gen) (Refer Trailering Guide)
—	N79	WHEEL, SPARE: Aluminum, Cast (T10 only) (Reqs N90 Wheels and ZK4 or ZK5 Spare)
—		WHEELS:
—	N90	Aluminum, Cast (T10 only) (N/A QAS, QAR or QYP P195 Tires)
✓	ZJ7	Rally (S10 only)
—	A31	WINDOWS: Power, Side Door (Incl w/ZQ2 Conv Pkg)
(2)	CD4	WINDSHIELD WIPER SYSTEM: Intermittent

QUICK-SPEC

EMISSION, ENGINE, TRANSMISSION, AXLE AND TIRE <i>MUST BE</i> ENTERED AS ADDITIONS TO THESE QUICK-SPECS.		B B A 1	B B A 2	B B A 3
Body: Standard	E55	x	x	x
Console	D55	x	x	x
Gages: Volt, Temp and Oil Pressure w/Trip Odometer	Z53	x	x	x
Radio: ETR AM/FM Stereo	UU9	x	x	N/I
Seat: Rear, Folding	AM7	x	x	x
Steering: Power	N40	x	x	x
Tank, Fuel	NK2	x	x	x
Air Conditioning	C60		x	x
Battery: Heavy-Duty	UA1		x	x
Mirrors: Bright	D45		x	x
Shield: Transfer Case (T10 only)	NY7		x	x
Steering Wheel: Comfortilt	N33		x	x
Deflector, Air	C51			x
Moldings: Body Side and Wheel Opening	B84			x
Operating Convenience Pkg	ZQ2			x
Radio: ETR AM/FM Stereo & Stereo Cassette Tape, Seek-Scan & Clock	UX1			x
Speed Control, Electronic	K34			x
Tailgate Window Release: Power	AU6			x

PLEASE REVIEW OPTION RESTRICTIONS BEFORE ORDERING

Q-S OPTION

- ___ K46 **AIR CLEANER:** (Reqs LR2 Eng)
- (2) C60 **AIR CONDITIONING:** (Reqs N40 Steering) (w/o C49 Defogger Incls K81 Gen) (w/o V02 Cooling Incls V01 Cooling)
- ___ G80 **AXLE, REAR:** Locking Differential
- (2) UA1 **BATTERY:** Heavy-Duty, 515 Cold Cranking Amps Delco Freedom (Incl w/V10 Cold Climate)
- ___ VE6 **BUMPER EQUIPMENT:**
Bumpers, Front and Rear Color-Keyed w/Rub Strips (Reqs ZY6, ZY7 or ZY8 Paint)
- ___ V28 Bumper Guards, Front only. Black
- ___ V54 **CARRIER, LUGGAGE:**
Painted, Black
- ___ V55 Bright
- ___ Z71 **CHASSIS EQUIPMENT:** Off Road Package (T10 only) (N/A F51 Shocks) (Reqs QEB Tires) (Incls NY7 Shield, V76 Tow Hooks, ZK5 Spare and P06 Trim Rings)
- ___ V10 **COLD CLIMATE PACKAGE:** (Incls K81 Gen and UA1 Battery)
- (1) D55 **CONSOLE**
- ___ KC4 **COOLING SYSTEM:** Heavy-Duty
Engine Oil Cooler (S10 only) (Reqs LR2 Eng, MX0 Trans and V01 or V02 Cooling)
- ___ V01 Radiator (N/A V02 Cooling) (Incl w/C60 Air)
- ___ V02 Radiator and Transmission Oil Cooler (Reqs LR2 Eng and MX0 Trans)
- ___ P17 **COVER, SPARE TIRE**
- (3) C51 **DEFLECTOR, AIR**
- ___ C49 **DEFOGGER, REAR WINDOW:** Electric (w/o C60 Air Incls K81 Gen)
- ___ AU3 **DOOR LOCK SYSTEM, POWER:** Side Door (Incl w/ZQ2 Conv Pkg)
- ___ U16 **GAGES:**
Gage, Tachometer (Incls Z53 Gages)
- (1) Z53 Voltmeter, Temperature and Oil Pressure w/Trip Odometer (Incl w/U16 Gage)
- ___ K81 **GENERATOR:** 66-Amp Delcotron (N/A C60 Air w/C49 Defogger) (Incl w/V10 Cold-Climate, C60 Air Conditioning or C49 Defogger)
- ___ AA3 **GLASS:**
Deep Tinted w/Light Tinted Rear Window (N/A AJ1 Glass)
- ___ AJ1 Deep Tinted
- ___ TT4 **HEADLAMPS, HALOGEN**
- ___ K05 **HEATER, ENGINE BLOCK**
- ___ U26 **LAMP:** Engine Compartment
- ___ D34 **MIRRORS:**
Visor
- ___ D44 Exterior, Below Eye-Line Type. Black
- (2) D45 Exterior, Below Eye-Line Type. Stainless Steel

PLEASE REVIEW OPTION RESTRICTIONS BEFORE ORDERING

Q-S	OPTION	
		MOLDINGS:
(3)	B84	Body Side and Wheel Opening (Incl w/ZY8 Paint) (Incls B96 Mldgs)
	B93	Door Edge Guard
	B74	Wheel opening, Black (N/A B96 Mldgs)
	B96	Wheel Opening, Bright (Incl w/B84 Mldgs)
(3)	ZQ2	OPERATING CONVENIENCE PACKAGE: (Incls AU3 Door Locks and A31 Windows)
	B3W	PRELIMINARY PRICE INFORMATION
		RADIO EQUIPMENT:
	U63	AM Radio
	U69	AM/FM Radio
	UL7	AM/FM Radio w/Clock
(1)	UU9	Electronically Tuned AM/FM Stereo Radio
	UL1	Electronically Tuned AM/FM Stereo Radio w/Clock
(3)	UX1	Electronically Tuned AM Stereo/FM Stereo Radio & Stereo Cassette Tape, Seek-Scan, Clock & Graphic Equalizer (Incls U66 Speakers)
	UM6	Electronically Tuned AM/FM Stereo Radio & Stereo Cassette Tape w/Seek-Scan and Clock (Incls U66 Speakers)
	U66	Speakers, Premium Dual Rear (Reqs UL1 or UU9 Radio) (Incl w/UM6 or UX1 Radio)
		SEATING: (MUST ORDER AM7 or YG4 Seat)
(1)	AM7	Rear, Folding, 2-Passenger
	YG4	Rear Seat Not Desired (N/A AM7 Seat)
	A78	SEAT EQUIPMENT: Seat Backs, Reclining
(2)	NY7	SHIELD, TRANSFER CASE: (T10 only) (Incl w/Z71 Chassis Equip)
	F51	SHOCK ABSORBERS: Front and Rear, Heavy-Duty (N/A Z71 Chassis Equip) (Incl w/F60 Susp.)
		SPARE TIRE, FULL SIZE: (Replaces Standard Compact Spare)
	ZK4	Highway (N/A QJL, QJT or QEB Tires)
	ZK5	On-Off Road (S10 Reqs Q1C, QJT or QJL Tires) (T10 Reqs QJL, QJT or QEB Tires) (Incl w/Z71 Chassis Equip)
(3)	K34	SPEED CONTROL, ELECTRONIC
		STEERING:
	N51	Power Not Desired
(1)	N40	Power
(2)	N33	STEERING WHEEL: Comfortilt
		STRIPING: (Reqs ZY1 Paint) (N/A B84 Mldgs) (See Color and Trim Chart for Availability)
	09A	Black
	28A	Blue, Dark
	64A	Gold
	72A	Red
	17A	Silver
	12A	White
	F60	SUSPENSION EQUIPMENT: Front, Heavy-Duty (T10 only) (N/A Z71 Chassis Equip) (Incls F51 Shocks) (Recommended for snowplow type usage only)
(3)	AU6	TAILGATE WINDOW RELEASE, POWER
(1)	NK2	TANK, FUEL: Approx 20 Gallons
		TIRES: (B/W: Blackwall, W/W: Whitewall, W/L: White Lettered) (Incls Compact Spare Tire)
	QAR	All-Season Steel Belted Radial Ply (Front and Rear)
	QAS	P195/75R-15 B/W
	QCE	P195/75R-15 W/W
	QCF	P205/75R-15 B/W
		P205/75R-15 W/L
	QYP	Highway Fiberglass Belted Radial Ply (Front and Rear)
		P195/75R-15 B/W
	Q1C	Steel Belted Radial Ply (Front-Highway and Rear On-Off Road) (CS10516 only)
		P205/75R-15 B/W
		On-Off Road Steel Belted Radial Ply (Front and Rear) (N/A ZK4 Spare)
	QJT	P205/75R-15 B/W
	QJL	P205/75R-15 W/L
	QEB	P235/75R-15 W/L (CT10516 only) (See Power Teams Chart For Axle Restrictions) (Reqs ZK5 Spare)
	V76	TOWING DEVICE: Two Front Tow Hooks (T10 only) (Incl w/Z71 Chassis Equip)
	VR2	TRAILER HITCH: Deadweight Type (N/A Z82 Trailering) (Incl w/Z72 Trailering)
	Z72	TRAILERING PACKAGE: (N/A Z82 Trailering) (Reqs MX0 Trans, V01 or V02 Cooling or C60 Air) (w/LN8 Eng Reqs 4.11 Rear Axle)
	Z82	TRAILERING SPECIAL EQUIPMENT: Heavy-Duty (Reqs LR2 Eng, MX0 Trans, V02 Trans Cooling, N40 Steering and 3.73 or 4.11 Rear Axle) (T10 w/QEB Tires Reqs 4.11 Rear Axle) (w/o C60 Air, V10 Cold Climate Pkg or C49 Defogger Reqs K81 Gen) (Refer Trailering Guide)
	N79	WHEEL, SPARE: Aluminum, Cast (T10 only) (Reqs N90 Wheels and ZK4 or ZK5 Spare)
	P06	WHEEL TRIM: Trim Rings (Incl w/Z71 Chassis Equip)
		WHEELS:
	N90	Aluminum, Cast (T10 only) (N/A QAR, QAS or QYP P195 Tires)
	ZJ7	Rally (S10 only)
	A31	WINDOWS: Power, Side Door (Incl w/ZQ2 Conv Pkg)
	CD4	WINDSHIELD WIPER SYSTEM: Intermittent

S-10 BLAZER 2- & 4-WHEEL DRIVE STRIPE CHART FOR ZY6 CUSTOM TWO-TONE

INTERIOR TRIM COLOR			BLUE	CARMINE	CHARCOAL	SADDLE TAN
EXTERIOR PAINT COLOR	Primary	Secondary	STRIPE COLORS			
BLACK, MIDNIGHT/Red, Apple	19	72	*Silver	Silver	Silver	*Silver
BLACK, MIDNIGHT/Sand, Desert (Met)	19	64	*Orange/Yellow	*Orange/Yellow	*Orange/Yellow	Orange/Yellow
BLACK, MIDNIGHT/Silver (Met)	19	17	Blue	Blue	Blue	*Red
BLACK, MIDNIGHT/White, Frost	19	12	*Blue	Red	Red	*Orange/Yellow
BLUE, GALAXY (MET)/Silver (Met)	28	17	Blue	*Red	Blue	*Blue
BLUE, GALAXY (MET)/White, Frost	28	12	Blue	*Red	*Blue	*Gold
BLUE, LIGHT (MET)/Blue, Galaxy (Met)	21	28	Blue	*Silver	*Silver	*Blue
BLUE, LIGHT (MET)/White, Frost	21	12	Blue	Red	*Blue	*Blue
BRONZE, INDIAN (MET)/Silver (Met)	66	17	*Orange/Yellow	*Orange/Yellow	Orange/Yellow	*Orange/Yellow
BRONZE, INDIAN (MET)/Sand, Desert (Met)	66	64	*Orange/Yellow	*Orange/Yellow	*Orange/Yellow	Orange/Yellow
BRONZE, INDIAN (MET)/White, Frost	66	12	*Silver	*Gold	*Orange/Yellow	Gold
RED, APPLE/Black, Midnight	72	19	*Silver	Red	Silver	*Red
RED, APPLE/Silver (Met)	72	17	*Red	Red	Red	*Red
RED, APPLE/White, Frost	72	12	*Silver	Silver	*Silver	*Gold
RED, CINNAMON/Black, Midnight	71	19	*Silver	*Red	Silver	*Red
RED, CINNAMON/White, Frost	71	12	*Silver	*Red	Red	*Gold
SAND, DESERT (MET)/Black, Midnight	64	19	*Gold	*Gold	*Orange/Yellow	Gold
SAND, DESERT (MET)/White, Frost	64	12	*Gold	*Gold	*Gold	Gold
SILVER (MET)/Black, Midnight	17	19	*Blue	Red	Red	*Silver
SILVER (MET)/Blue, Galaxy (Met)	17	28	Blue	*Silver	*Silver	*Silver
SILVER (MET)/Red, Apple	17	72	*Silver	Red	Silver	*Silver
SILVER MET/White, Frost	17	12	Blue	Red	Red	*Red
TAN, DOESKIN/Black, Midnight	61	19	*Gold	*Red	*Gold	Gold
TAN, DOESKIN/Sand, Desert (Met)	61	64	*Gold	*Orange/Yellow	*Orange/Yellow	Orange/Yellow
TAN, DOESKIN/White, Frost	61	12	*Gold	*Red	*Orange/Yellow	Gold
WHITE, FROST/Black, Midnight	12	19	Blue	Red	Red	*Red
WHITE, FROST/Blue, Galaxy (Met)	12	28	Blue	*Blue	*Blue	*Blue
WHITE, FROST/Red, Apple	12	72	*Silver	Silver	*Silver	*Gold
WHITE, FROST/Sand, Desert (Met)	12	64	*Orange/Yellow	Orange/Yellow	Orange/Yellow	Orange/Yellow
WHITE, FROST/Silver (Met)	12	17	Blue	Red	Red	*Red

*Stripe color/trim color combination available but not recommended.