






# ***SPRINT***

## **SPECIFICATIONS**

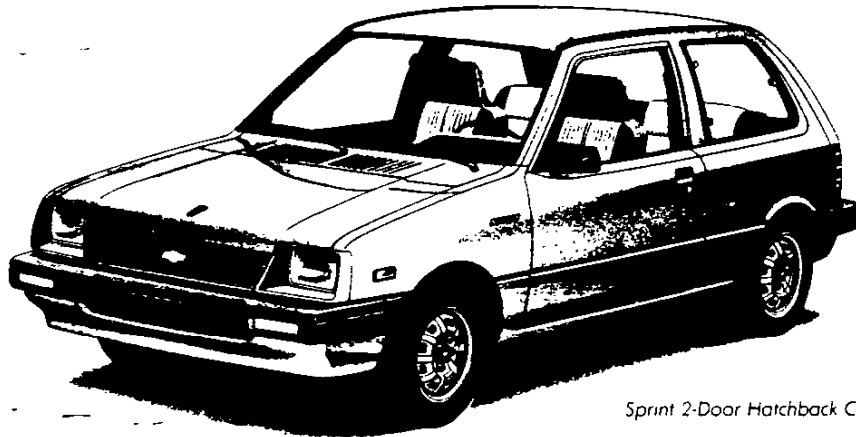
 **THE HEARTBEAT OF AMERICA. TODAY'S CHEVROLET.**



# SPRINT

## ORDERING INFORMATION

Sprint Hatchback Coupe . . . Model Number IMR08  
 Passenger Capacity . . . 4



Sprint 2-Door Hatchback Coupe

### EQUIPMENT SUMMARY

#### POWER TEAM

- 1.0 Liter 3-cyl (61 CID) (transverse-mounted)
- Five-speed manual transmission

#### CHASSIS/MECHANICAL

- Front drive
- Full unitized body construction
- MacPherson-strut front suspension with stabilizer bar
- Single-leaf rear suspension and rigid axle
- Rack-and-pinion steering
- Power front disc/rear drum brake system
- Disc brake audible wear sensors
- P145/80SR-12 steel-belted radial ply tires
- Full-size spare tire
- Side-lift frame jack
- Tools (scissors jack, jack handle, and wheel wrench)
- Chip-resistant lower-body protection
- Maintenance-free battery
- 8.0-gallon fuel tank

#### EXTERIOR

- Body-color grille and headlamp bezels
- Black wraparound molded bumpers
- Swing-up rear hatch with two counterbalanced supports

- Body-color front air dam and valance panel
- Secondary hood latch on hood (black)
- Black door handles with chrome locks
- Swing-out rear quarter windows
- Remote left outside mirror
- Argent steel wheels with chrome lug nuts
- Drip rail integrated in roof panel
- Sprint nameplate on front fender
- Tricolor tail lamps

#### INTERIOR

- Reclining high-back front bucket seats
- Folding full-width rear seat
- "Easy-Entry" passenger side front seat
- Formed one-piece, color-keyed cut-pile carpeting
- Color-keyed instrument panel
- Day/night rearview mirror
- Side window defoggers
- Glove compartment door and latch
- Multi-function "Smart Switch"
- Vinyl door trim panel with molded pocket and armrests
- Luggage area side trim and carpet
- Rear ashtray
- Cigarette lighter

Refer to Dealer Order Guide for option availability and application.

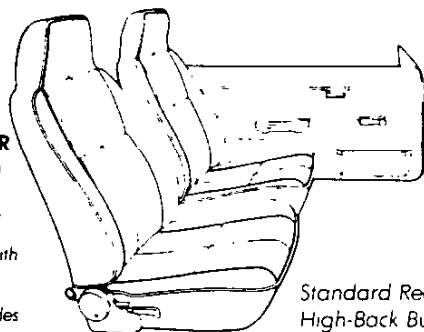
\_\_\_\_\_

\_\_\_\_\_

## 1985 SPRINT INTERIOR

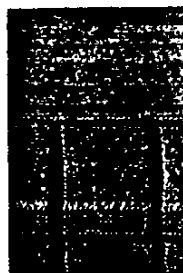
### AVAILABLE INTERIOR

In addition to the standard seat shown, there is a Custom Cloth interior available in Light Saddle Tan and Medium Blue colors with vertical color-keyed stripes. Seats are low back with adjustable headrests. Includes split folding rear seat.



Standard Reclining High-Back Bucket Seats

CLOTH/VINYL  
(Std)



Light Saddle Tan



Medium Blue

## EXTERIOR COLORS



11—White



13—Silver (Metallic)



42—Medium Blue (Metallic)

75—Red

## CUSTOM TWO-TONE PAINT (RPO D84)

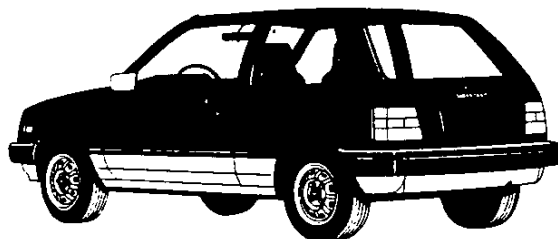
Two-Tone exterior includes wide body side molding with red accent stripe, black door frames, red accent stripe in bumpers and silver lower-body color.



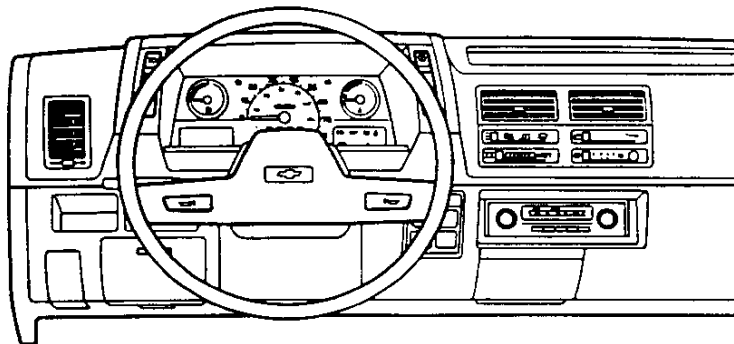
Red/Silver (Metallic)



Medium Blue (Metallic)/  
Silver (Metallic)



## INSTRUMENT PANEL



### SPORT STRIPES (RPO D88)

(not available with Custom Two-Tone)

EXTERIOR COLOR	STRIPE	LETTERING
White	Dark Gold (Met.)	Brown
Red	Orange	White
Silver (Met.)	Charcoal (Met.)	Dark Blue
Medium Blue (Met.)	Red	White

All illustrations and specifications in this brochure are based on the latest product information available at the time of publication approval. The right is reserved to make changes at any time, without notice, in colors, materials specifications and models, and also to discontinue models.

**Chevrolet**

Litho in U.S.A. 4392/284

Refer to Dealer Order Guide for option availability and application.

---

---

**ALPHABETICAL OPTION INDEX**  
 (Not for ordering purposes)

Option Number	Description
A01	GLASS, TINTED: All Windows
B32	FLOOR COVERING: Mats, Color-Keyed, Front only
B33	FLOOR COVERING: Mats, Color-Keyed, Rear only
B84	MOLDINGS: Body Side
C49	DEFOGGER, REAR WINDOW: Electric
C60	AIR CONDITIONING
DG1	MIRROR: Outside Rearview, RH Manual
D88	STRIPES, SPORT
LY9	ENGINE: 1.0 Liter 2 BBL L3
MM5	TRANSMISSION: 5-Speed Manual
✓ MX1	TRANSMISSION: Automatic
NA5	EMISSION SYSTEM: Standard Emission Equipment
QJD	TIRES: P145/80 R-12 Blackwall (Radial)
UN3	RADIO EQUIPMENT: AM/FM Stereo Radio with Stereo Cassette Tape
U58	RADIO EQUIPMENT: AM/FM Stereo Radio
U69	RADIO EQUIPMENT: AM/FM Radio
YF5	EMISSION SYSTEM: California Emission Requirements
Z05	COMFORT AND CONVENIENCE PACKAGE





**COLOR AND TRIM SELECTION**

**PLEASE NOTE:**



AS INDICATED ON THE SMALL CARS QUICK-SPEC WORKSHEET, PRIMARY AND SECONDARY EXTERIOR/INTERIOR COLOR CHOICES MUST BE SPECIFIED. THE EXTERIOR/INTERIOR COLOR COMBINATIONS SHOWN BELOW ARE THE ONLY COMBINATIONS THAT ARE AVAILABLE. NO SUBSTITUTIONS ARE PERMITTED.

**CONCERNING SECONDARY EXTERIOR/INTERIOR COLOR CHOICE:**

ANY SPECIFIC AVAILABLE COLOR AND TRIM COMBINATION (WITH SOLID COLOR OR CUSTOM TWO-TONE PAINT) MAY BE INDICATED AS A SECONDARY CHOICE. AS A FURTHER ALTERNATIVE, SECONDARY CHOICE CAN REFLECT A WILLINGNESS TO ACCEPT A VEHICLE WITH ANY AVAILABLE COLOR AND TRIM COMBINATION. (SEE ALTERNATIVE SECONDARY COLOR AND TRIM BELOW)

Interior-Trim Color		Med Blue	Lt Saddle
<b>MODEL</b>	<b>SEAT TYPE</b>		
1MR08	Cloth Vinyl Bucket	HDD2	HCC2
	= Custom Cloth Bucket	=FDD2	=FCC2

= Available only with Quick-Specs MRA4 and MRA6

**CUSTOM TWO-TONE PAINT**

Exterior Paint Color	Color Code		Med Blue	Lt Saddle
	L	U		
Silver Blue, Medium (Met)	13	42	X	
Silver/Red	13	75		X

**SOLID COLOR PAINT**

Color	Color Code		Med Blue	Lt Saddle
	L	U		
Blue, Medium (Met)	42	42	X	
Red	75	75		X
Silver (Met)	13	13	X	
White	11	11		X

**ALTERNATIVE SECONDARY COLOR AND TRIM**

IF ONE OF THE SPECIFIC COLOR/TRIM COMBINATIONS ABOVE IS NOT SELECTED AS A SECONDARY CHOICE, ONE OF THE BROADER ALTERNATIVES SHOWN BELOW MUST BE SPECIFIED.

Exterior Paint Color	L	U	TRIM
	Any Two-Tone	AN	Y1
Any Solid	AN	Y2	ANY2
Any Paint	AN	Y3	ANY3

**STANDARD STRIPE COLOR WHEN D88 STRIPE IS ORDERED**

Color	L	U	Color
Blue, Medium (Met)	42	42	Red
Red	75	75	Orange
Silver (Met)	13	13	Charcoal
White	11	11	Dk Gold

L = Lower U = Upper

**✓ POWER TEAMS (Refer to next page for option availability and application)**

ENGINE OPTION CONDITION	RATIO	
	3.95	4.10
<b>WITH NA5 STANDARD EMISSIONS</b>		
LY9 MM5	—	Std
MX1	Std	—
<b>WITH YF5 CALIFORNIA EMISSIONS</b>		
LY9 MM5	—	Std
MX1	Std	—

.....

# SPRINT HATCHBACK COUPE

REFER WEEKLY STOPS/LATEST UPDATE

**MODEL**  
1MR08 Sprint 2-Door Hatchback Coupe

**ENGINE: MUST ORDER (See Power Teams)**

**STANDARD EMISSION EQUIPMENT—REQUIRES NA5 (Also Satisfies High Altitude Requirements)**  
\_\_\_\_LY9 1.0 Liter 2 BBL L3

**CALIFORNIA EMISSION EQUIPMENT—REQUIRES YF5**  
\_\_\_\_LY9 1.0 Liter 2 BBL L3

**EMISSION SYSTEMS: MUST ORDER ONE (See Above)**

\_\_\_\_NA5 STANDARD EMISSION EQUIPMENT  
\_\_\_\_YF5 CALIFORNIA EMISSION REQUIREMENTS

## ✓ QUICK-SPEC



**NOTE: AS INDICATED ON THE SMALL CARS QUICK-SPEC WORKSHEET, A PRIMARY AND SECONDARY QUICK-SPEC MUST BE INDICATED WHEN ORDERING.**

**DELETIONS ARE NOT PERMITTED FROM QUICK-SPECS**

**OPTIONS BELOW ARE AVAILABLE ONLY IN THE QUICK-SPECS SHOWN**

		M	M	M	M	M	M
		R	R	R	R	R	R
		A	A	A	A	A	A
		1	2	3	4	5	6
Transmission: 5-Speed Manual	MM5	X	X	X	X		
Transmission: Automatic	MX1					X	X
Tires: P145/80 R-12 Blackwall	QJD	X	X	X	X	X	X
Defogger, Rear Window Electric	C49		X		X	X	X
Comfort and Convenience Package (Incls Split Folding Rear Seat Back Passenger Assist Handle, Rear Window Washer/Wiper and Digital Clock)	Z05		X		X	X	X
Air Conditioning	C60			X	X		X
Glass, Tinted All Windows	A01			X	X		X
Seats, Custom Front and Rear (Incls Uplevel Seats with Full Cloth Facing Adjustable Headrests and Split Folding Rear Seat Back) (Available only when FDD2, FCC2, ANY1 ANY2, or ANY3 is specified)	F**2				X		X



**OPTIONS AVAILABLE IN ADDITION TO THOSE SPECIFIED IN QUICK-SPECS. PLEASE REVIEW OPTION RESTRICTIONS BEFORE ORDERING. ADDITIONS MUST BE SHOWN AS "+" ON ORDERS**

### OPTION

#### FLOOR COVERING:

B32 — Mats, Color-Keyed, Front only  
B33 — Mats, Color-Keyed, Rear only

OG1 **MIRROR:** Outside Rearview, RH Manual

B84 **MOLDINGS:** Body Side (N/A Custom Two-Tone Paint)

#### RADIO EQUIPMENT:

U69 — AM/FM Radio  
U58 — AM/FM Stereo Radio (Incls Dual Rear Speakers)

UN3 — AM/FM Stereo Radio with Stereo Cassette Tape (Incls Dual Rear Speakers)

D88 **STRIPES, SPORT:** (N/A Custom Two-Tone Paint)

SEE PAGE 4 FOR SPRINT AUTOMATIC CORRECTION INFORMATION ➡➡

---

11/11/11

---

## SPRINT AUTOMATIC CORRECTION INFORMATION

**CONDITION:** Option ordered which conflicts with another option of far greater importance.

OPTION		ACTION
B84	Moldings w/Custom Two-Tone Paint	Remove B84
D88	Sport Stripes w/Custom Two-Tone Paint	Remove D88



10

