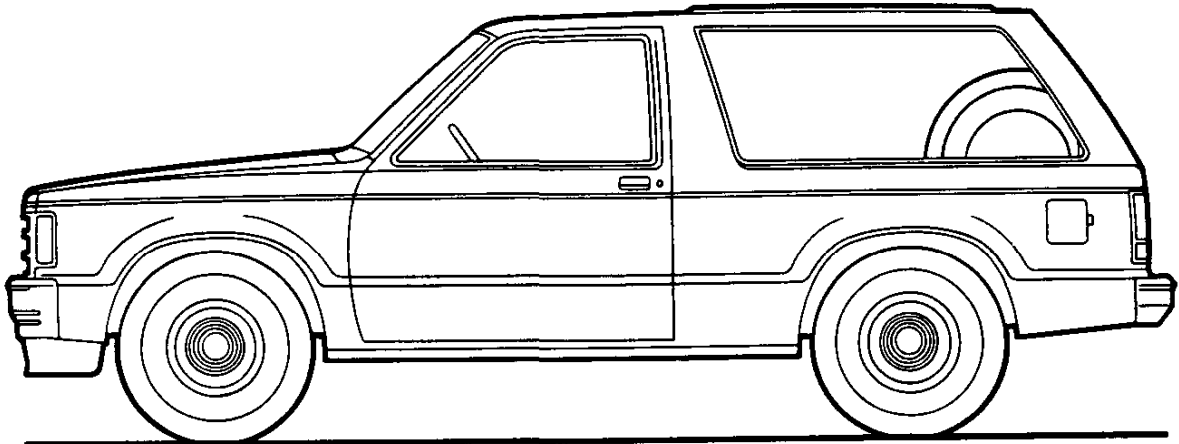


1 9 8 6 -- O R I G I N A L  
**S-10/15 BLAZER/JIMMY 2- & 4-WHEEL DRIVE**  
**MODEL SELECTOR**



SERIES	MODEL NUMBER	BODY ORDERING CODE
		GASOLINE MODELS
<b>S-10/S-15 (4x2)</b>	S10516	E55
<b>S-10/S-15 (4x4)</b>	T10516	E55

# S-10/15 BLAZER/JIMMY 2- & 4-WHEEL DRIVE

**GASOLINE**

## STANDARD SPECIFICATIONS

(See Gray Tab Section for Specification Details)

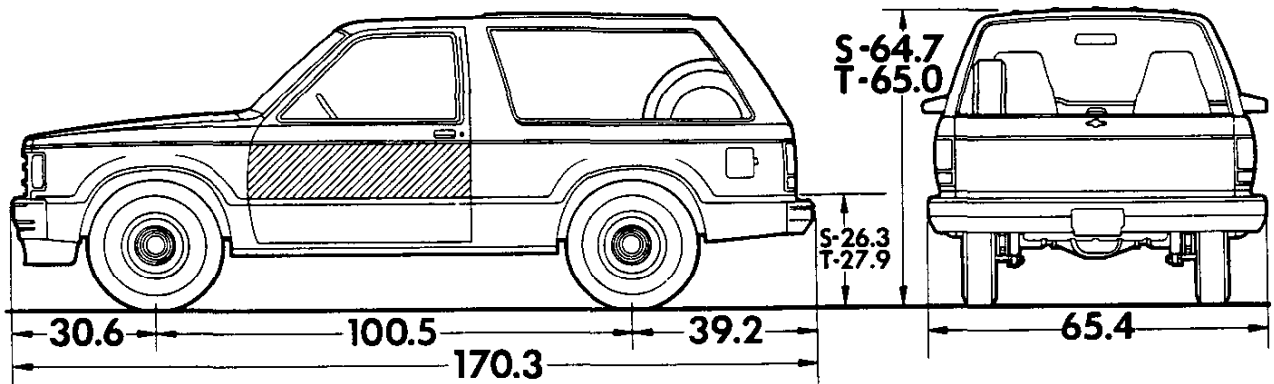
Series	S-10/15 4x2	S-10/15 4x4
<b>Engine</b>	2.5 Liter (151 Cu. In.) EFI L4	
Base Equip. ....	9.13; 71.86 sq. in.	
Clutch .....	Oiled-paper Element	
Air Filter .....	Throwaway Type	
Oil Filter .....	Single Aluminized	
Exhaust System .....	See Engine & Cooling Section for specific model applications	
Emission Control Systems .....		
<b>Suspension, Front</b>	Independent	Independent Driving Axle
Type .....	Coil Springs	Torsion Bar
Axle Capacity .....	2200 lb.	2400 lb.
Axle Ratio .....	—	3.73
Springs @ Ground .....	1100 lb. ea.	1200 lb. ea.
Shock Absorbers .....	25mm dia.	25mm dia.
Stabilizer Bar .....	29mm dia.	32mm dia.
<b>Suspension, Rear</b>	Salisbury Axle; Hypoid Drive; Two-stage Multi-leaf Springs	
Type .....	Leaf Springs	
Axle Capacity .....	2600 lb.	2700 lb.
Axle Ratio .....	3.73	3.73
Springs, Main @ Ground .....	1350 lb. ea.	
Shock Absorbers .....	25mm dia.	
<b>Brakes</b>	Hydraulic; Self-adjusting	
Front .....	Disc; 10.51" Rotor	
Rear .....	Drum; 9.49" x 2"	
Booster .....	Single Diaphragm	
Parking .....	Cable to Rear Wheels	
<b>Electrical</b>	12 Volt; Negative Ground	
Battery — Freedom Type .....	405 CCA ♦ @ 0°F.	
— Reserve Capacity .....	75 min. @ 80°F.	
Delcotron Generator .....	78 amp.	
<b>Frame</b>	Carbon Steel; 36,-39,000 psi	
Section Modulus .....	1.78	
<b>Fuel Tank (nominal capacity)</b>	13.2 gal.	
<b>Steering Gear Type</b>	Manual; Recirculating Ball Gear	
Linkage .....	Parallelogram	
<b>Transmission</b>	4-Speed Manual	
Shift Location .....	Floor	
<b>Transfer Case</b>	—	New Process 207 2-Speed
Shift Lever .....	—	Single Lever
<b>Tires</b>	(4) P195/75R15 All Seasons Steel Belted Radial	
Spare .....	(1) T155/90D16	
<b>Wheels</b>	(4) Disc, 15" x 6"	
Spare .....	(1) Disc, 16" x 4"	

♦ CCA-Cold Cranking Amps

# S-10/15 BLAZER/JIMMY 2- & 4-WHEEL DRIVE

Body Ordering Code: E55

**GASOLINE**



**Sign Panel Area (side)**  
12 3/4" x 45"

Model	Body Ordering Code	Engine No. Cyl.	Curb Weight (lb)			Model Weights (lb)*			Ground Clearance (in)*
			Front	Rear	Total	Front	Rear	Total	Minimum
<b>S10516</b>	E55	4	1456	1441	2897	1595	1602	3197	7.4
<b>T10516</b>	E55	4	1671	1481	3152	1810	1642	3452	6.6

\* Dimensions with standard equipment, unloaded.

\*Model Weights include curb weight plus occupants (standard seating capacity x 150 lbs.). Total Weight may vary as much as ±50 lbs. to allow for production build variation.

## PAYLOAD SELECTOR

‡Maximum Ratings				Minimum Equipment Required for GVW Rating		
Payload (lb)	GVW Range (lb)	†GAWR (lb)		Tires, Front	Tires, Rear	Chassis Equipment
		Front	Rear			
<b>S-10/S-15 MODELS (2-WHEEL DRIVE)</b>						
<b>1000</b>	3897 to 4538	2200	2600	P195/75R15	P195/75R15	Standard
<b>S-10/S-15 MODELS (4-WHEEL DRIVE)</b>						
<b>1000</b>	4156 to 4854	2400	2684	P195/75R15	P195/75R15	Standard

‡GAWRs shown are the maximum for each axle with the equipment listed. Maximum ratings include an additional 50 lbs. allowance for vehicle weight variance.

†GAWR – Gross Axle Weight Rating.

# S-10/15 BLAZER/JIMMY 2- & 4-WHEEL DRIVE

## POWER TEAMS

Note: All payloads for S Blazer/Jimmy are 1000 lbs

### ALL STATES EXCEPT CALIFORNIA

#### POWER TEAMS (MUST ORDER ENGINE, TRANSMISSION AND REAR AXLE)

ENGINE	TRANSMISSION			AXLES			
	4-SP	5-SP	AUTO	3.08	3.42	3.73	4.11
<b>W/NA5 STANDARD EMISSION EQUIPMENT</b>							
<b>—S10516</b>							
LN8 L4 2.5 Liter EFI	MM4		MX0	—	—	GQ1	H04
LL2 V6 2.8 Liter EFI (Reqs N40 Steering)	MM4			GQ1	GU6	—	—
		MM5		—	GQ1	%GT4	—
			MX0	—	GQ1	GT4	—
<b>—T10516</b>							
LN8 L4 2.5 Liter EFI	MM4			—	—	*GQ1	\$H04
LL2 V6 2.8 Liter EFI (Reqs N40 Steering)	MM4	MM5	MX0	—	—	—	GQ1
				—	*GQ1	GT4	—
		MM5	MX0	—	—	*GQ1	H04
<b>W/NA6 HIGH ALTITUDE EMISSION EQUIPMENT</b>							
<b>—S10516</b>							
LN8 L4 2.5 Liter EFI	MM4		MX0	—	—	—	GQ1
LL2 V6 2.8 Liter EFI (Reqs N40 Steering)	MM4		MX0	—	—	GQ1	—
<b>—T10516</b>							
LN8 L4 2.5 Liter EFI	MM4	MM5	MX0	—	—	—	GQ1
LL2 V6 2.8 Liter EFI (Reqs N40 Steering)	MM4			—	—	*GQ1	\$H04
		MM5	MX0	—	—	*GQ1	H04

### CALIFORNIA ONLY

ENGINE	TRANSMISSION			AXLES			
	4-SP	5-SP	AUTO	3.42	3.73	4.11	
<b>W/YF5 CALIFORNIA EMISSION REQUIREMENTS</b>							
<b>—S10516</b>							
LN8 L4 2.5 Liter EFI	MM4		MX0	—	—	GQ1	H04
LL2 V6 2.8 Liter EFI (Reqs N40 Steering)	MM4		MX0	—	GQ1	GT4	—
		MM5		—	—	%GQ1	—
<b>—T10516</b>							
LN8 L4 2.5 Liter EFI	MM4			—	—	*GQ1	\$H04
LL2 V6 2.8 Liter EFI (Reqs N40 Steering)	MM4	MM5	MX0	—	—	—	GQ1
				—	—	*GQ1	\$H04
		MM5	MX0	—	—	*GQ1	H04

\*N/A P235/75R15 Tires  
\$Reqs P235/75R15 Tires  
%N/A P195/75R15 Tires

### ENGINE RATINGS—ALL STATES

SAE Net Ratings	2.5 Liter 151 EFI L4	2.8 Liter 173-2 BBL V6
Net Horsepower .....	92 @ 4400 rpm	125 @ 4800 rpm
Net Torque, lb-ft .....	134 @ 2800 rpm	150 @ 2200 rpm

# S10 2 AND 4 WHEEL DRIVE BLAZER (1000-lb Payload)

## 1986 VEHICLES WITH STANDARD EQUIPMENT

Prices shown are effective with initial shipments of 1986 model motor vehicles

Description	Model Number	Body Code	Wheel Base	Factory D&H(s)	List Price	Mfr's Suggested Retail Price*	Group Number
<b>◆ 4-Cylinder 2.5 Liter E.F.I. L4 Gasoline Engine-Engine Ordering Code LN8</b>							
<b>S10 Series 2-Wheel Drive</b>							
Tailgate .....	CS10516	E55	100.5"	N.A.	9312.00	9312.00	15
<b>S10 Series 4-Wheel Drive</b>							
Tailgate .....	CT10516	E55	100.5"	N.A.	10698.00	10698.00	15

★ Manufacturer's Suggested Retail Prices do not include applicable destination charges, state and local taxes, license fees, optional equipment or special items or services.

◆ Refer to Dealer Order Guide for California Requirements.

## OPTIONS WHEN INSTALLED BY GENERAL MOTORS

Prices shown are effective with initial shipments of 1986 model motor vehicles

Description	Option Number	Factory D&H(s)	List Price	Mfr's Suggested Retail Price◇
<b>Tahoe/Sierra Classic Equipment:</b> (See Interior and Exterior Color Selection Charts) Includes color-keyed door handle inserts, B84 Body Side and Bright Wheel Opening Moldings, black quarter window moldings, special tailgate applique, P06 Wheel Trim Rings, nameplate on instrument panel, special door trim with coin holder in LH door panel, deluxe armrests and map pockets, special color-keyed carpeting, D34 Visor Mirror, special body insulation and Z53 Gage Package with Trip Odometer. Also includes P17 Spare Tire Cover when P16 Spare Tire and Wheel Carrier is not specified				
	YC2	N.A.	620.00	620.00
<b>Sport/Gypsy Equipment:</b> (See Interior and Exterior Color Selection Charts) Available only when ZY7 Sport or ZY6 Custom Two-Tone Paint and Sport Cloth Trim is specified. Includes A78 Reclining Seat Backs, D55 Console, VE6 Color-Keyed Front and Rear Bumpers, black door handle inserts, B84 Body Side and Black Wheel Opening Moldings, black quarter window moldings, special tailgate applique, nameplate on instrument panel, special door trim with coin holder in LH door panel, deluxe armrests and map pockets, color-keyed carpeting, D34 Visor Mirror, special body insulation and Z53 Gage Package with Trip Odometer. Also includes P17 Spare Tire Cover when P16 Spare Tire and Wheel Carrier is not specified				
S10516 only. Includes ZJ7 Rally Wheels .....	YC3	N.A.	987.00	987.00
T10516 only. Includes P06 Trim Rings .....	YC3	N.A.	955.00	955.00
<b>Seat Trim:</b> (See Interior and Exterior Color Selection Chart for availability and ordering information).				
<b>X**4 Custom Vinyl High Back Buckets.</b> Driver and Passenger. Not available when YC3 is specified				
	...	NO ADDITIONAL CHARGE		
<b>H**4 Special Custom Cloth High Back Buckets.</b> Available only when YC2 is specified				
	...	NO ADDITIONAL CHARGE		
<b>D**4 Deluxe Cloth High Back Buckets.</b> Driver and Passenger. Available only when YC3 is specified.				
Without AM7 Rear Seat .....	...	NO ADDITIONAL CHARGE		
With AM7 Rear Seat .....	...	N.A.	24.00	24.00
<b>B**4 High Country Sheepskin High-Back Bucket Seats.</b> Driver and Passenger only. Available only when YC2 or YC3 is specified. With YC2 and AM7 Optional seat. Optional seat is Custom Cloth Trim. With YC3 and AM7 Optional Rear Seat. Optional seat is Deluxe Cloth Trim.				
	...	N.A.	295.00	295.00
<b>Paints, Exterior:</b> (See Interior and Exterior Color Selection Chart for ordering information and paint application).				
Solid .....	ZY1	NO ADDITIONAL CHARGE		

(a) D & H Charges on vehicle and optional equipment include reimbursement to ordering Division for any tax that it has paid, incurred or agreed to pay thereon.

◇ State and local taxes not included.

# S10/15 2 AND 4 WHEEL DRIVE BLAZER/JIMMY

## OPTIONS WHEN INSTALLED BY GENERAL MOTORS

Prices shown are effective with initial shipments of 1986 model motor vehicles

Description	Option Number	Factory D&H(s)	List Price	Mfr's Suggested Retail Price◇
<b>Paints, Exterior: (Continued)</b>				
<i>Custom Two-Tone. Includes dual-tone body striping</i>				
Without YC3. Available only when VE6 Bumpers are specified	ZY8	N.A.	200.00	200.00
With YC3	ZY8	NO ADDITIONAL CHARGE		
<i>Special Two-Tone. Middle area painted Color Code Two choice.</i>				
Without YC2. Includes B84 Body Side and Bright Wheel Opening Moldings	ZY8	N.A.	311.00	311.00
With YC2	ZY8	N.A.	167.00	167.00
<i>Sport Two-Tone. Included when YC3 is specified.</i>				
Without YC2. Includes striping that matches Color Code Two paint color except when YC3 is specified. Area below striping painted Color Code Two choice	ZY7	N.A.	227.00	227.00
With YC2. Area below B84 Body Side and Bright Wheel Opening Moldings painted Color Code Two choice	ZY7	N.A.	162.00	162.00
<b>Emission Systems: Dealer Note - One of the following emission options must be specified. (See Power Teams Chart for Engine and Transmission Availability).</b>				
<i>California Emission Requirements. Includes all testing, equipment and /or certification necessary for registration in the state of California. Not Available when NA5 Standard or NA6 High Altitude Emissions are specified</i>				
	YF5	N.A.	99.00	99.00
<i>High Altitude Emission Equipment</i>				
	NA6	NO ADDITIONAL CHARGE		
<i>Standard Emission Equipment. Not available when YF5 California or NA6 High Altitude Emissions are specified</i>				
	NA5	NO ADDITIONAL CHARGE		
<b>Engines: (See Power Teams Chart for availability and complete specifications)</b>				
<i>Gasoline</i>				
2.8 Liter E.F.I. V6. Available only when N40 Power Steering is specified	LL2	N.A.	275.00	275.00
2.5 Liter E.F.I. L4	LN8	NO ADDITIONAL CHARGE		
<b>Transmissions: (See Power Teams Chart for availability and complete specifications).</b>				
4-Speed Automatic with Overdrive	MX0	N.A.	695.00	695.00
4-Speed Manual	MM4	NO ADDITIONAL CHARGE		
5-Speed Manual with Overdrive	MM5	N.A.	175.00	175.00
<b>Axles, Rear: (See Power Teams Chart for option number selection, availability and complete specifications)</b>				
Optional Ratio	...	N.A.	36.00	36.00
Locking Differential	G80	N.A.	238.00	238.00
<b>Tires: Includes Compact Spare Tire</b>				
<i>All wheel size, Front and Rear are 6.00" except when QEB Tires or N90 Wheels are specified, then wheel size is 7.00".</i>				
<b>TUBELESS</b>				
P195/75R15 All Seasons Steel Belted Radial Ply Blackwall. (Standard) (Maximum Capacity 1342-lbs)	QAR	NO ADDITIONAL CHARGE		
P195/75R15 All Seasons Steel Belted Radial Ply Whitewall. (Maximum Capacity 1342-lbs)	QAS	N.C.	64.00	64.00
P195/75R15 Highway Fiberglass Belted Radial Ply Blackwall. (Maximum Capacity 1342-lbs)	QYP	NO ADDITIONAL CHARGE		
P205/75R15 All Seasons Steel Belted Radial Ply Blackwall. (Maximum Capacity 1453-lbs)	QCE	N.C.	31.00	31.00
P205/75R15 On-Off Road Steel Belted Radial Ply White Lettered. (Maximum Capacity 1453-lbs)	QJL	N.C.	158.00	158.00
P205/75R15 All Seasons Steel Belted Radial Ply White Lettered. (Maximum Capacity 1453-lbs)	QCF	N.C.	122.00	122.00
P205/75R15 On-Off Road Steel Belted Radial Ply Blackwall. (Maximum Capacity 1453-lbs)	QJT	N.C.	67.00	67.00
P235/75R15 On-Off Road Steel Belted Radial Ply White Lettered. (Maximum Capacity 1453-lbs). T1 Series only. Available only when ZK5 Full Size Spare Tire is specified. Included when Z71 Chassis Equipment Package is specified	QEB	N.C.	294.00	294.00

(a) D & H Charges on vehicle and optional equipment include reimbursement to ordering Division for any tax that it has paid, incurred or agreed to pay thereon.

◇ State and local taxes not included.

# S10/15 2 AND 4 WHEEL DRIVE BLAZER/JIMMY

## OPTIONS WHEN INSTALLED BY GENERAL MOTORS

Prices shown are effective with initial shipments of 1985 model motor vehicles

Description	Option Number	Factory D&H(a)	List Price	Mfr's Suggested Retail Price <sup>o</sup>
<b>Tires: (Continued)</b>				
P205/75R15 On-Off Road Steel Belted Radial Ply Blackwall (Front Highway, Rear On-Off Road) (Maximum Capacity 1453-lbs). S1 Series only	Q1C	N.C.	49.00	49.00

### OTHER OPTIONS

<b>Air Cleaner, Pre-Cleaner:</b> Available only when LL2 2.8 Liter Engine is specified	K46	N.A.	42.00	42.00
<b>Air Conditioning: All-Weather.</b> Available only when N40 Power Steering is specified. Includes V01 H.D. Radiator when V02 H.D. Radiator and Transmission Oil Cooler is not specified.	C60	N.A.	705.00	705.00
<b>Battery: Heavy-Duty.</b> 515 Cold Cranking Amps, Delco Freedom. Included when V10 Cold-Climate Package is specified	UA1	N.A.	53.00	53.00
<b>Bumper Equipment:</b>				
<b>Bumpers, Painted.</b> Color-Keyed with rub strips. Front and Rear. Available only when ZY6 Custom, ZY7 Sport or ZY8 Special Two-Tone Paint is specified. Included when YC3 is specified	VE6 V28	NO ADDITIONAL CHARGE		30.00
<b>Bumper Guards, Front Black</b>		N.A.	30.00	30.00
<b>Carriers, Luggage:</b>				
Bright. Not available when YC3 is specified	V55	N.A.	120.00	120.00
Black	V54	N.A.	120.00	120.00
<b>Carrier, Spare Wheel and Tire:</b> Not available when P17 Spare Tire Cover is specified				
Without YC2 or YC3	P16	N.A.	182.00	182.00
With YC2 or YC3	P16	N.A.	150.00	150.00
<b>Chassis Equipment: Off-Road Package.</b> T10516 only. Not available when F51 H.D. Shock Absorbers are specified. Includes QEB P235/75R15 tires, ZK5 Full Size Spare, special torsion bars, shock absorbers, jounce bumpers, front stabilizer, V76 Tow Hooks and NY7 Transfer Case Shield				
Without YC2 or YC3. Includes P06 Trim Rings	Z71	N.A.	658.00	658.00
With YC2 or YC3	Z71	N.A.	602.00	602.00
<b>Cold-Climate Package:</b> Includes UA1 H.D. Battery and special insulation.				
Without YC2 or YC3	V10	N.A.	148.00	148.00
With YC2 or YC3	V10	N.A.	107.00	107.00
<b>Console: Front Compartment Floor.</b> Included when YC3 is specified	D55	N.A.	108.00	108.00
<b>Cooling System:</b>				
<b>Engine Oil.</b> S1 Series only. Available only when LL2 2.8 Liter Engine, MX0 Automatic Transmission and V01 H.D. Radiator or V02 H.D. Radiator and Transmission Oil Cooler are specified	KC4	N.A.	120.00	120.00
<b>Radiator, Heavy-Duty.</b> Not available when V02 H.D. Radiator and Transmission Oil Cooler is specified. Included when C60 Air Conditioning is specified	V01	N.A.	53.00	53.00
<b>Radiator and Transmission Oil, Heavy-Duty.</b> Available only when LL2 2.8 Liter Engine and MX0 Automatic Transmission are specified.				
Without C60 Air Conditioning	V02	N.A.	112.00	112.00
With C60 Air Conditioning	V02	N.A.	59.00	59.00
<b>Cover, Spare Tire:</b> Included when YC2 or YC3 is specified	P17	N.A.	32.00	32.00
<b>Deflector, Air</b>	C51	N.A.	41.00	41.00
<b>Defogger, Rear Window: Electric.</b>	C49	N.A.	145.00	145.00
<b>Door Lock System, Power: Side Doors only.</b> Included when ZQ2 Operating Convenience Package is specified	AU3	N.A.	135.00	135.00

(a) D & H Charges on vehicle and optional equipment include reimbursement to ordering Division for any tax that it has paid, incurred or agreed to pay thereon.  
<sup>o</sup> State and local taxes not included.

# S10/15 2 AND 4 WHEEL DRIVE BLAZER/JIMMY

## OPTIONS WHEN INSTALLED BY GENERAL MOTORS

Prices shown are effective with initial shipments of 1986 model motor vehicles

Description	Option Number	Factory D&H(a)	List Price	Mfr's Suggested Retail Price◇
<b>OTHER OPTIONS</b>				
<b>Floor Covering: Mats, Color-Keyed, Removable</b> Available only when YC2 or YC3 is specified.				
Front .....	B32	N.A.	15.00	15.00
Rear .....	B33	N.A.	11.00	11.00
<b>Gages:</b>				
<i>Voltmeter, Temperature, Oil Pressure and Trip Odometer.</i>				
Included when YC2, YC3 or U16 Tachometer is specified .	Z53	N.A.	58.00	58.00
<i>Tachometer.</i>				
Without YC2 or YC3. Includes Z53 Gage Package .....	U16	N.A.	113.00	113.00
With YC2 or YC3 .....	U16	N.A.	55.00	55.00
<b>Glass:</b>				
<i>Deep Tinted.</i> Includes dark laminated glass on rear quarters and rear window .....				
	AJ1	N.A.	190.00	190.00
<i>Deep Tinted with Light Tinted Rear Window.</i> Not available when AJ1 Deep Tinted Glass is specified. Includes dark laminated glass on rear quarter windows .....				
	AA3	N.A.	135.00	135.00
<b>Headlamps, Halogen</b> .....				
	TT4	N.A.	22.00	22.00
<b>Heater, Engine Block: 600 watts, 120 volts.</b> .....				
	K05	N.A.	31.00	31.00
<b>Lamp, Engine Compartment</b> .....				
	U26	N.A.	15.00	15.00
<b>Mirrors, Exterior: LH and RH. Below-Eye-Line Type.</b>				
<i>Painted</i> .....	D44	N.A.	50.00	50.00
<i>Bright.</i> Not available when YC3 is specified .....	D45	N.A.	83.00	83.00
<b>Mirror, Visor: RH.</b> Included when YC2 or YC3 is specified	D34	N.A.	7.00	7.00
<b>Moldings:</b>				
<i>Body Side and Wheel Opening.</i> Included when YC2, YC3 or ZY8 Special Two-Tone Paint is specified. Includes lower side and rear moldings of black plastic with bright trim and wheel opening moldings.				
Without ZY7 Sport Two-Tone Paint .....	B84	N.A.	144.00	144.00
With ZY7 Sport Two-Tone Paint .....	B84	N.A.	79.00	79.00
<b>Guards, Door Edge</b> .....				
	B93	N.A.	17.00	17.00
<i>Wheel Opening.</i>				
<i>Bright.</i> Not available when YC3 is specified. Included when YC2 or ZY8 Special Two-Tone Paint is specified. Also included with B84 Body Side and Wheel Opening Moldings except when YC3 is specified .....				
	B96	N.A.	29.00	29.00
<i>Black.</i> Included when YC3 is specified. Not available when B96 Bright Wheel Opening Moldings are specified				
Without B84 Body Side and Wheel Opening Moldings	B74	N.A.	41.00	41.00
With B84 Body Side and Wheel Opening Moldings ..	B74	N.A.	12.00	12.00
<b>Operating Convenience Package:</b> Includes AU3 Power Door Locks and A31 Power Windows .....				
	ZQ2	N.A.	325.00	325.00
<b>Preliminary Price Information</b> .....				
	B3W	N.A.	N.A.	N.A.
<b>Radio Equipment:</b>				
<i>AM Radio</i> .....	U63	N.A.	112.00	112.00
<i>AM/FM Radio</i> .....	U69	N.A.	171.00	171.00
<i>AM/FM Stereo Radio, Electronically Tuned</i> .....	UU9	N.A.	238.00	238.00
<i>AM/FM Stereo Radio with Seek and Scan and Digital Clock.</i>				
Electronically Tuned .....	UM7	N.A.	297.00	297.00
<i>AM/FM Stereo Radio with Seek and Scan, Stereo Cassette Tape and Digital Clock.</i> Electronically Tuned. Includes U66 Premium Dual Rear Speakers .....				
	UM8	N.A.	444.00	444.00
<i>AM Stereo and FM Stereo Radio with Seek and Scan, Stereo Cassette Tape with Search and Repeat, Digital Clock and Graphic Equalizer.</i> Electronically Tuned. Includes U66 Premium Dual Rear Speakers .....				
	UX1	N.A.	594.00	594.00
<i>Speakers, Premium Dual Rear.</i> Available only when UU9 or UM7 Radio is specified. Included with UM8 or UX1 Radio				
	U66	N.A.	25.00	25.00

(a) D & H Charges on vehicle and optional equipment include reimbursement to ordering Division for any tax that it has paid, incurred or agreed to pay thereon.  
 ◇ State and local taxes not included.



# S10/15 2 AND 4 WHEEL DRIVE BLAZER/JIMMY

## OPTIONS WHEN INSTALLED BY GENERAL MOTORS

Prices shown are effective with initial shipments of 1986 model motor vehicles

Description	Option Number	Factory D&H(a)	List Price	Mfr's Suggested Retail Price◇
<b>OTHER OPTIONS</b>				
<b>Seats:</b> (Dealer Note— AM7 Rear Seat or YG4 Rear Seat Not Desired must be specified. Added weight reflects optional seat weight only. Refer to vehicle and option weight section of Data Book)				
Folding Rear Bench. Includes armrests	AM7	N.A.	341.00	341.00
Optional Seat Not Desired	YG4	NO ADDITIONAL CHARGE		
Seat Backs, Reclining. R.H. and L.H. Included when YC3 is specified	A78	N.A.	70.00	70.00
<b>Shield, Transfer Case:</b> T1 Series only. Included when Z71 Chassis Equipment is specified	NY7	N.A.	67.00	67.00
<b>Shock Absorbers:</b> Heavy-Duty, Front and Rear. Not available when Z71 Chassis Equipment is specified. Included when F60 H.D. Front Suspension is specified	F51	N.A.	34.00	34.00
<b>Spare Tire:</b> Full size. Included with Z71 Chassis Equipment. Replaces Standard Compact Spare				
Highway				
With QAR P195/75R15 All Seasons Steel Belted Radial Ply Blackwall	ZK4	N.C.	46.00	46.00
With QAS P195/75R15 All Season Steel Belted Radial Ply Whitewall	ZK4	N.C.	49.00	49.00
With QYP P195/75R15 Highway Fiberglass Belted Radial Ply Blackwall	ZK4	N.C.	31.00	31.00
With QCE P205/75R15 All Seasons Steel Belted Radial Ply Blackwall	ZK4	N.C.	52.00	52.00
With QCF P205/75R15 All Seasons Steel Belted Radial Ply White Lettered	ZK4	N.C.	70.00	70.00
With Q1C P205/75R15 Highway (Front) On-Off Road (Rear) Steel Belted Radial Ply Blackwall. S1 Series only	ZK4	N.C.	52.00	52.00
On-Off Road				
With QJT P205/75R15 Steel Belted Radial Ply Blackwall On-Off Road Front and Rear Tire.	ZK5	N.C.	54.00	54.00
With QJL P205/75R15 On-Off Road Steel Belted Radial Ply White Lettered	ZK5	N.C.	72.00	72.00
With QEB P235/75R15 Steel Belted Radial Ply White Lettered On-Off Road Front and Rear Tires. Mounted flat in loadspace T1 Series only. Included when Z71 Chassis Equipment is specified	ZK5	N.C.	90.00	90.00
With Q1C P205/75R15 Steel Belted Radial Ply Blackwall On-Off Road	ZK5	N.C.	54.00	54.00
<b>Speed Control, Electronic</b>	K34	N.A.	195.00	195.00
<b>Steering:</b> (One of the following steering options must be specified.)				
Power	N40	N.A.	260.00	260.00
Power, Not Desired. Not available when Z82 Trailering Special is specified	N51	NO ADDITIONAL CHARGE		
<b>Steering Wheel:</b> Comfortilt	N33	N.A.	115.00	115.00
<b>Striping, Body:</b> Available only when ZY1 Solid Paint and the following stripe color is specified. Not available when B84 Body Side and Wheel Opening Moldings, YC2 or YC3 is specified. Included when ZY7 Sport Two-Tone Paint is specified. (See Interior and Exterior Color Availability Charts for Ordering Information)	D85	N.A.	65.00	65.00
<b>Stripe Color:</b>				
Black	19A	NO ADDITIONAL CHARGE		
Blue, Dark	28A	NO ADDITIONAL CHARGE		
Gold	67A	NO ADDITIONAL CHARGE		
Red	72A	NO ADDITIONAL CHARGE		
Silver	17A	NO ADDITIONAL CHARGE		
White	12A	NO ADDITIONAL CHARGE		
<b>Rally Striping:</b> Available only when ZY1 Paint and stripe color are specified. (See Interior and Exterior Color Availability Charts for Ordering Information)	D98	N.A.	80.00	80.00

(a) D & H Charges on vehicle and optional equipment include reimbursement to ordering Division for any tax that it has paid, incurred or agreed to pay thereon.  
◇ State and local taxes not included.

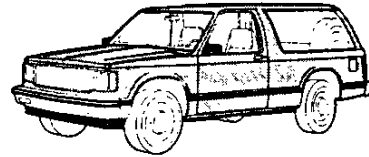


## S-10 BLAZER 2- & 4-WHEEL DRIVE Paint Applications

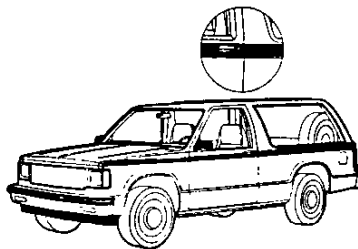
**SOLID PAINT—ZY1**  
(w/o Optional Striping)



**SOLID PAINT—ZY1**  
(with D85 Body Striping)



**SOLID PAINT—ZY1**  
(with D98 Rally Striping)



**SPORT TWO-TONE PAINT—ZY7**  
(Includes body side stripe that matches  
color code 2 w/o YC3 or YC2)

Color Code 1



Color Code 2

**SPECIAL TWO-TONE PAINT—ZY8**  
(Includes B84 Body Side and Bright Wheel Opening Moldings)

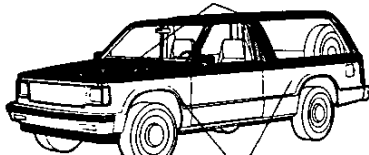
Color Code 1



Color Code 2

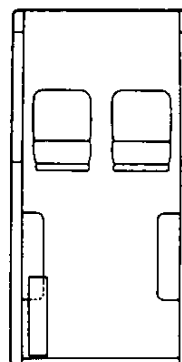
**CUSTOM TWO-TONE PAINT—ZY6**  
(Includes Decal Striping)

Color Code 1

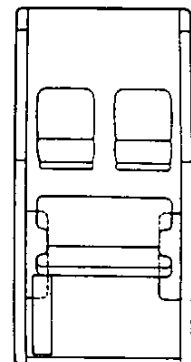


Color Code 2

**SEATING ARRANGEMENTS**  
(See Option Section For Restrictions)



Standard



w/AM7

## S-10 BLAZER 2- & 4-WHEEL DRIVE INTERIOR AND EXTERIOR COLOR AVAILABILITY CHART WITH D85 BODY STRIPING

**Please Note:** Below are the interior trim color and exterior paint combinations recommended by Chevrolet. The only available color code 1/color code 2 exterior color combinations are those shown in the chart below; however, any available interior trim color may be ordered with one of these exterior color combinations if that particular combination is desired by the customer.

INTERIOR COLORS		Decor	Blue	Carmine	Charcoal	Saddle Tan	D85 STRIPING CHART RECOMMENDED COMBINATIONS Additional stripe combinations are available except where N/A is shown, provided the dealer orders (D80) as verification (N/A B84, YC2 or YC3)						
STANDARD INTERIOR Custom Vinyl High Back Bucket Seats		Std	XDD4	XRR4	XJJ4	XSS4							
TAHOE Custom Vinyl High Back Bucket Seats Special Custom Cloth High Back Bucket Seats High Country Sheepskin High Back Bucket Seats*		YC2	XDD4	XRR4	XJJ4	XSS4							
			HDD4	HRR4	HJJ4	HSS4							
SPORT (Reqs ZY6 or ZY7 Paint) Deluxe Cloth High Back Bucket Seats High Country Sheepskin High Back Bucket Seats*		YC3			DJJ4	DSS4							
						BSS4							
EXTERIOR COLORS w/ZY1 PAINT		Color Code 1	Color Code 2	RECOMMENDED INTERIOR TRIM COLORS			STRIPE COLORS						
				Black 19A	Blue, Dark 28A	Gold 67A	Red 72A	Silver 17A	White 12A				
BLACK, MIDNIGHT	19	19		X									
BLACK, MIDNIGHT	19	19			X								
BLACK, MIDNIGHT	19	19					X						
BLUE, GALAXY (Metallic)	28	28	X		X								
BLUE, GALAXY (Metallic)	28	28					X						
BLUE, LIGHT (Metallic)	21	21	X		X								
BRONZE, INDIAN (Metallic)	66	66			X								
BRONZE, INDIAN (Metallic)	66	66				X							
GOLD, NEVADA (Metallic)	67	67			X	X							
GRAY, STEEL (Metallic)	90	90	X										
GRAY, STEEL (Metallic)	90	90		X									
GRAY, STEEL (Metallic)	90	90			X								
RED, APPLE	72	72		X									
RED, APPLE	72	72			X								
RED, CINNAMON	71	71			X								
RED, CINNAMON	71	71				X							
TAN, DOESKIN	61	61				X							
TAN, DOESKIN	61	61					X						
WHITE, FROST	12	12	X										N/A
WHITE, FROST	12	12		X									N/A
WHITE, FROST	12	12			X								N/A
WHITE, FROST	12	12				X							N/A
w/ZY6, ZY7 or ZY8 PAINT		STRIPE COLORS - ZY7 ONLY (Stripe Colors Cannot be Changed) (N/A ZY8) (With ZY6 Paint Refer to Page 4 for Striping Chart)						Black	Blue, Dark	Gold	Red	Silver	White
BLACK, MIDNIGHT													
Gold, Nevada (Metallic)	19	67				X							
Red, Apple	19	72		X	X				X				
Silver (Metallic)	19	17		X	X					X			
White, Frost	19	12		X	X								X
BLUE, GALAXY (Metallic)													
Silver (Metallic)	28	17	X		X						X		
White, Frost	28	12	X										X
BLUE, LIGHT (Metallic)													
Blue, Galaxy (Metallic)	21	28	X					X					
White, Frost	21	12	X										X
BRONZE, INDIAN (Metallic)													
Gold, Nevada (Metallic)	66	67				X							
Silver (Metallic)	66	17			X						X		
White, Frost	66	12				X							X
GOLD, NEVADA (Metallic)													
Black, Midnight	67	19				X		X					
White, Frost	67	12				X							X
GRAY, STEEL (Metallic)													
Black, Midnight	90	19		X	X			X					
Blue, Galaxy (Metallic)	90	28	X					X					
Red, Apple	90	72		X	X				X				
Silver (Metallic)	90	17	X	X	X					X			
White, Frost	90	12	X	X	X								X
RED, APPLE													
Black, Midnight	72	19		X	X			X					
Silver (Metallic)	72	17		X	X					X			
White, Frost	72	12		X									X
RED, CINNAMON													
Black, Midnight	71	19			X			X					
White, Frost	71	12			X								X
TAN, DOESKIN													
Black, Midnight	61	19				X		X					
Gold, Nevada (Metallic)	61	67				X			X				
White, Frost	61	12				X							X
WHITE, FROST													
Black, Midnight	12	19		X	X			X					
Blue, Galaxy (Metallic)	12	28	X					X					
Gold, Nevada (Metallic)	12	67			X	X				X			
Red, Apple	12	72		X					X				
Silver (Metallic)	12	17	X	X	X					X			

\*With YC2 Tahoe, rear seat trim is Special Custom Cloth with YC3 Sport rear seat trim is Deluxe Cloth. N/A-Not Available

## S-10 BLAZER 2- & 4-WHEEL DRIVE INTERIOR AND EXTERIOR COLOR AVAILABILITY CHART WITH D98 RALLY STRIPING

**Please Note:** Below are the interior trim color and exterior paint combinations recommended by Chevrolet. The only available color code 1/color code 2 exterior color combinations are those shown in the chart below, however any available interior trim color may be ordered with one of these exterior color combinations if that particular combination is desired by the customer.

INTERIOR COLORS		Decor	Blue	Carmine	Charcoal	Saddle Tan	<b>D98 STRIPING CHART RECOMMENDED COMBINATIONS</b> Stripe color options must be specified on all ZY1 Solid Paint applications. Additional stripe combinations are available except where N/A is shown, provided the dealer orders (D60) as verification.					
STANDARD INTERIOR Custom Vinyl High Back Bucket Seats		Std.	XDD4	XRR4	XJJ4	XSS4						
TAHOE Custom Vinyl High Back Bucket Seats		YC2	XDD4	XRR4	XJJ4	XSS4						
Special Custom Cloth High Back Bucket Seats			HDD4	HRR4	HJJ4	HSS4						
High Country Sheepskin High Back Bucket Seats						BSS4						
EXTERIOR COLORS w/ZY1 PAINT	Color Code 1	Color Code 2	RECOMMENDED INTERIOR TRIM COLORS				STRIPE COLORS					
							Black 19A	Dk. Blue 28A	Gold 67A	Red 72A	Silver 17A	White 12A
✓ BLACK, MIDNIGHT	19	19			X		N/A	N/A			X	
✓ BLACK, MIDNIGHT	19	19				X	N/A	N/A	X			
✓ BLACK, MIDNIGHT	19	19		X			N/A	N/A		X		
✓ BLUE, GALAXY (Metallic)	28	28	X		X		N/A	N/A		N/A	X	
✓ BLUE, GALAXY (Metallic)	28	28				X	N/A	N/A	X	N/A		
✓ BLUE, LIGHT (Metallic)	21	21	X		X			X	N/A	N/A		
✓ BRONZE, INDIAN (Metallic)	66	66			X		N/A	N/A		N/A	X	
✓ BRONZE, INDIAN (Metallic)	66	66				X	N/A	N/A	X	N/A	N/A	
✓ GOLD, NEVADA (Metallic)	67	67			X	X	X	N/A	N/A	N/A	N/A	
GRAY, STEEL (Metallic)	90	90			X		X		N/A			
GRAY, STEEL (Metallic)	90	90	X					X	N/A			
GRAY, STEEL (Metallic)	90	90		X					N/A	X		
RED, APPLE	72	72			X		X	N/A		N/A		
RED, APPLE	72	72		X				N/A		N/A	X	
RED, CINNAMON	71	71			X		X	N/A		N/A		
RED, CINNAMON	71	71				X		N/A	X	N/A	N/A	
TAN, DOESKIN	61	61			X		X	N/A		N/A	N/A	
TAN, DOESKIN	61	61				X		N/A	X	N/A	N/A	
WHITE, FROST	12	12			X		X					N/A
WHITE, FROST	12	12	X					X				N/A
WHITE, FROST	12	12				X			X			N/A
WHITE, FROST	12	12		X						X		N/A

N/A-Not Available

## S-10 BLAZER 2- & 4-WHEEL DRIVE STRIPING CHART FOR ZY6 CUSTOM TWO-TONE

INTERIOR TRIM COLOR		BLUE	CARMINE	CHARCOAL	SADDLE TAN
EXTERIOR PAINT COLOR	Color Code 1   Color Code 2	STRIPE COLORS			
BLACK, MIDNIGHT Gold, Nevada (Met)	19   67	*Orange/Yellow	*Orange/Yellow	*Orange/Yellow	Orange/Yellow
BLACK, MIDNIGHT Red, Apple	19   72	*Silver	Silver	Silver	*Silver
BLACK, MIDNIGHT Silver (Met)	19   17	*Blue	Blue	Blue	*Red
BLACK, MIDNIGHT White, Frost	19   12	*Blue	Red	Red	*Orange/Yellow
BLUE, GALAXY (MET)/Silver (Met)	28   17	Blue	*Red	Blue	*Blue
BLUE, GALAXY (MET) White, Frost	28   12	Blue	*Red	*Blue	*Gold
BLUE, LIGHT (MET) Blue, Galaxy (Met)	21   28	Blue	*Silver	*Silver	*Blue
BLUE, LIGHT (MET) White, Frost	21   12	Blue	*Red	*Blue	*Blue
BRONZE, INDIAN (MET)/Gold, Nevada (Met)	66   67	*Orange/Yellow	*Orange/Yellow	*Orange/Yellow	Orange/Yellow
BRONZE, INDIAN (MET)/Silver (Met)	66   17	*Orange/Yellow	*Orange/Yellow	Orange/Yellow	*Orange/Yellow
BRONZE, INDIAN (MET) White, Frost	66   12	*Silver	*Gold	*Orange/Yellow	Gold
GOLD, NEVADA (MET)/Black, Midnight	67   19	*Gold	*Gold	*Orange/Yellow	Gold
GOLD, NEVADA (MET) White, Frost	67   12	*Gold	*Gold	*Gold	Gold
GRAY, STEEL (MET) Black, Midnight	90   19	*Blue	Red	Red	*Silver
GRAY, STEEL (MET) Blue, Galaxy (Met)	90   28	Blue	*Silver	*Silver	*Silver
GRAY, STEEL (MET) Red, Apple	90   72	*Silver	Silver	Silver	*Silver
GRAY, STEEL (MET) Silver (Met)	90   17	Blue	Red	Red	*Red
GRAY, STEEL (MET) White, Frost	90   12	Blue	Red	Red	*Red
RED, APPLE Black, Midnight	72   19	*Silver	Red	Silver	*Red
RED, APPLE Silver (Met)	72   17	*Red	Red	Red	*Red
RED, APPLE White, Frost	72   12	*Silver	Silver	*Silver	*Gold
RED, CINNAMON Black, Midnight	71   19	*Silver	*Red	Silver	*Red
RED, CINNAMON White, Frost	71   12	*Silver	*Red	Red	*Gold
TAN, DOESKIN/Black, Midnight	61   19	*Gold	*Red	*Gold	Gold
TAN, DOESKIN/Gold, Nevada (Met)	61   67	*Gold	*Orange/Yellow	*Orange/Yellow	Orange/Yellow
TAN, DOESKIN/White, Frost	61   12	*Gold	*Red	*Orange/Yellow	Gold
WHITE, FROST/Black, Midnight	12   19	*Blue	Red	Red	*Red
WHITE, FROST/Blue, Galaxy (Met)	12   28	Blue	*Blue	*Blue	*Blue
WHITE, FROST/Gold, Nevada (Met)	12   67	*Orange/Yellow	*Orange/Yellow	Orange/Yellow	Orange/Yellow
WHITE, FROST/Red, Apple	12   72	*Silver	Silver	*Silver	*Gold
WHITE, FROST/Silver (Met)	12   17	Blue	Red	Red	*Red

\*Stripe color trim color combination available but not recommended.

**S-10 BLAZER**  
REFER WEEKLY STOPS / LATEST UPDATE

**MODEL AND BODY**

Description	Model No	Body	Wheelbase
<b>2-WHEEL-DRIVE GASOLINE MODELS</b>			
#Tailgate .....	CS10516	E55	100.5"

Description	Model No	Body	Wheelbase
<b>4-WHEEL-DRIVE GASOLINE MODELS</b>			
#Tailgate .....	CT10516	E55	100.5"

=Reqs N40 Power Steering or N51  
Power Steering Not Desired And AM7 Folding Seat  
or YG4 Seat Not Desired

**EMISSIONS (MUST ORDER ONE)**

- \_\_\_\_\_ **NA5 Standard Emission Equipment**
- \_\_\_\_\_ **NA6 High Altitude Emission Equipment**
- \_\_\_\_\_ **YF5 California Emission Requirements**

**POWER TEAMS (MUST ORDER ENGINE, TRANSMISSION AND REAR AXLE)**

ENGINE	TRANSMISSION			AXLE			
	4-SP	5-SP	AUTO	3.08	3.42	3.73	4.11
<b>W/NA5 STANDARD EMISSION EQUIPMENT</b>							
<b>—S10516</b>							
LN8 L4 2.5 Liter EFI	MM4		MX0	—	—	GQ1	H04
LL2 V6 2.8 Liter EFI (Reqs N40 Steering)	MM4			GQ1	GU6	—	—
		MM5		—	GQ1	%GT4	—
			MX0		—	GQ1	GT4
<b>—T10516</b>							
LN8 L4 2.5 Liter EFI	MM4			—	—	*GQ1	\$H04
		MM5	MX0	—	—	—	GQ1
LL2 V6 2.8 Liter EFI (Reqs N40 Steering)	MM4			—	*GQ1	GT4	—
		MM5	MX0	—	—	*GQ1	H04
<b>W/NA6 HIGH ALTITUDE EMISSION EQUIPMENT</b>							
<b>—S10516</b>							
LN8 L4 2.5 Liter EFI	MM4		MX0	—	—	—	GQ1
LL2 V6 2.8 Liter EFI (Reqs N40 Steering)	MM4		MX0	—	—	GQ1	—
<b>—T10516</b>							
LN8 L4 2.5 Liter EFI	MM4	MM5	MX0	—	—	—	GQ1
LL2 V6 2.8 Liter EFI (Reqs N40 Steering)	MM4			—	—	*GQ1	\$H04
		MM5	MX0	—	—	*GQ1	H04
<b>W/YF5 CALIFORNIA EMISSION REQUIREMENTS</b>							
<b>—S10516</b>							
LN8 L4 2.5 Liter EFI	MM4		MX0	—	—	GQ1	H04
LL2 V6 2.8 Liter EFI (Reqs N40 Steering)	MM4		MX0	—	GQ1	GT4	—
		MM5		—	—	%GQ1	—
<b>—T10516</b>							
LN8 L4 2.5 Liter EFI	MM4			—	—	*GQ1	\$H04
		MM5	MX0	—	—	—	GQ1
LL2 V6 2.8 Liter EFI (Reqs N40 Steering)	MM4			—	—	*GQ1	\$H04
		MM5	MX0	—	—	*GQ1	H04

\*N/A P235/75R15 Tires  
\$Reqs P235/75R15 Tires  
%N/A P195/75R15 Tires

FEATURE OPTION: YC3

*Sport Equipment (Reqs ZY6 or ZY7 Paint) (Incls Lower Body Color Front and Rear Bumpers w/Rub Strips, Reclining Seat Backs and Console, Gage Package with Trip Odometer, Spare Tire Cover, Visor Mirror, Black Body Side Mldgs, and Black Wheel Opening Mldgs) (Incls Rally Wheels on S10) (Incls Wheel Trim Rings on T10)*

QUICK-SPEC

EMISSION, ENGINE, TRANSMISSION, AXLE AND TIRE MUST BE ENTERED AS ADDITIONS TO THESE QUICK-SPECS.		B S A 1	B S A 2	B S A B 3
Sport Equipment	YC3	x	x	x
Air Conditioning	C60	x	x	x
Body: Standard	E55	x	x	x
Mirrors: Black	D44	x	x	x
Radio: ETR AM/FM Stereo	UU9	x	x	N/I
Seat: Rear, Folding	AM7	x	x	x
Steering: Power	N40	x	x	x
Steering Wheel: Comfort	N33	x	x	x
Tank, Fuel	NK2	x	x	x
Battery: Heavy-Duty	UA1		x	x
Floor Coverings: Front	B32		x	x
Floor Coverings: Rear	B33		x	x
Shield, Transfer Case (T10 only)	NY7		x	x
Speed Control, Electronic	K34		x	x
Tailgate Window Release: Power	AU6		x	x
Windshield Wiper System	CD4		x	x
Carrier, Luggage	V54			x
Deflector, Air	C51			x
Defogger, Rear Window	C49			x
Headlamps, Halogen	TT4			x
Lamp, Engine Compartment	U26			x
Operating Convenience Pkg	ZQ2			x
Radio: ETR AM/FM Stereo w/Seek-Scan, Stereo Cassette Tape & Clock	UM6			x

PLEASE REVIEW OPTION RESTRICTIONS BEFORE ORDERING

Q-S	OPTION
—	K46 AIR-CLEANER: (Reqs LL2 Eng)
(1)	C60 AIR CONDITIONING: (Reqs N40 Steering) (w/o V02 Cooling Incls V01 Cooling)
—	G80 AXLE, REAR: Locking Differential
✓(2)	UA1 BATTERY: Heavy-Duty, 540 Cold Cranking Amps Delco Freedom (Incl w/V10 Cold Climate)
—	V28 BUMPER EQUIPMENT: Bumper Guards, Front only, Black
(3)	V54 CARRIER, LUGGAGE: Painted, Black
—	Z71 CHASSIS EQUIPMENT: Off Road Package (T10 only) (N/A F51 Shocks) (Reqs QEB Tires) (Incls NY7 Shield, V76 Tow Hooks and ZK5 Spare)
—	V10 COLD-CLIMATE PACKAGE: (Incls UA1 Battery)
—	KC4 COOLING SYSTEM: Heavy-Duty
—	V01 Engine Oil Cooler (S10 only) (Reqs LL2 Eng, MX0 Trans and V01 or V02 Cooling)
—	V02 Radiator (N/A V02 Cooling) (Incl w/C60 Air)
(3)	C51 RADIATOR AND TRANSMISSION OIL COOLER (Reqs LL2 Eng and MX0 Trans)
(3)	C49 DEFLECTOR, AIR
—	AU3 DEFOGGER, REAR WINDOW: Electric
(2)	B32 DOOR LOCK SYSTEM, POWER: Side Door (Incl w/ZQ2 Conv Pkg)
(2)	B33 DOOR LOCK SYSTEM, POWER: Side Door (Incl w/ZQ2 Conv Pkg)
—	U16 FLOOR COVERING: Mats, Removable Color-Keyed
—	AA3 GAGE, TACHOMETER
—	AJ1 GLASS: Deep Tinted w/Light Tinted Rear Window (N/A AJ1 Glass)
(3)	TT4 GLASS: Deep Tinted
(3)	K05 HEADLAMPS, HALOGEN
(3)	U26 HEATER, ENGINE BLOCK
(1)	D44 LAMP: Engine Compartment
	MIRRORS: Exterior, Below-Eye-Line Type, Black



## PLEASE REVIEW OPTION RESTRICTIONS BEFORE ORDERING

Q-S	OPTION
	B93 <b>MOLDINGS:</b> Door Edge Guard
(3)	ZQ2 <b>OPERATING CONVENIENCE PACKAGE:</b> (Incls AU3 Door Locks and A31 Windows)
	B3W <b>PRELIMINARY PRICE INFORMATION</b>
	<b>RADIO EQUIPMENT:</b>
	U63 AM Radio
	U69 AM/FM Radio
(1)	UU9 Electronically Tuned AM/FM Stereo Radio
	UM7 Electronically Tuned AM/FM Stereo Radio w/Seek-Scan and Digital Clock
(3)	UM6 Electronically Tuned AM/FM Stereo Radio w/Seek-Scan, Stereo Cassette Tape and Digital Clock (Incls U66 Speakers)
	UX1 Electronically Tuned AM Stereo/FM Stereo Radio w/Seek-Scan, Stereo Cassette Tape with Search and Repeat, Graphic Equalizer and Digital Clock (Incls U66 Speakers)
	U66 Speakers, Premium Dual Rear (Reqs UM7 or UU9 Radio) (Incl w/UM6 or UX1 Radio)
	<b>SEATING: (MUST ORDER AM7 or YG4 Seat)</b>
(1)	AM7 Rear, Folding 2-Passenger
	YG4 Rear Seat Not Desired (N/A AM7 Seat)
(2)	NY7 <b>SHIELD, TRANSFER CASE:</b> (T10 only) (Incl w/Z71 Chassis Equip)
	F51 <b>SHOCK ABSORBERS:</b> Front and Rear, Heavy-Duty (N/A Z71 Chassis Equip) (Incl w/F60 Susp)
	<b>SPARE TIRE, FULL SIZE:</b> (Replaces Standard Compact Spare)
	ZK4 Highway/All-Seasons (N/A QEB, QJL or QJT Tires)
	ZK5 On-Off Road (S10 Reqs QJL, QJT or Q1C Tires) (T10 Reqs QEB, QJL or QJT Tires) (Incl w/Z71 Chassis Equip)
(2)	K34 <b>SPEED CONTROL, ELECTRONIC</b>
	<b>STEERING:</b>
	N51 Power Not Desired
(1)	N40 Power
(1)	N33 <b>STEERING WHEEL:</b> Comfortilt
	F60 <b>SUSPENSION EQUIPMENT:</b> Front, Heavy-Duty (T10 only) (N/A Z71 Chassis Equip) (Incls F51 Shocks) (Recommended for snowplow type usage only)
(2)	AU6 <b>TAILGATE WINDOW RELEASE, POWER</b>
(1)	NK2 <b>TANK, FUEL:</b> Approx 20 Gallons
	<b>TIRES:</b> (B/W: Blackwall, W/W: Whitewall, W/L: White Lettered) (Incls Compact Spare Tire)
	All-Seasons Steel Belted Radial Ply (Front and Rear)
	P195/75R-15 B/W (See Power Teams Chart For Axle Restrictions)
	P195/75R-15 W/W (See Power Teams Chart For Axle Restrictions)
	P205/75R-15 B/W
	P205/75R-15 W/L
	Highway Fiberglass Belted Radial Ply (Front and Rear)
	P195/75R-15 B/W (See Power Teams Chart For Axle Restrictions)
	QYP Steel Belted Radial Ply (Front-Highway and Rear On-Off Road) (CS10516 only)
	Q1C P205/75R-15 B/W
	On-Off Road Steel Belted Radial Ply (Front and Rear) (N/A ZK4 Spare)
	QJT P205/75R-15 B/W
	QJL P205/75R-15 W/L
	QEB P235/75R-15 W/L (CT10516 only) (Reqs ZK5 Spare) (See Power Teams Chart For Axle Restrictions)
	V76 <b>TOWING DEVICE:</b> Two Front Tow Hooks (T10 only) (Incl w/Z71 Chassis Equip)
	VR2 <b>TRAILER HITCH:</b> Deadweight Type (N/A Z82 Trailing) (Incl w/Z72 Trailing)
	Z72 <b>TRAILERING PACKAGE:</b> (N/A Z82 Trailing) (Reqs MX0 Trans, V01 or V02 Cooling or C60 Air) (w/LN8 Eng Reqs 4.11 Rear Axle)
	Z82 <b>TRAILERING SPECIAL EQUIPMENT:</b> Heavy-Duty (Reqs LL2 Eng, MX0 Trans, V02 Trans Cooling, and N40 Steering) (S10 Reqs 3.73 Rear Axle) (T10 Reqs 4.11 Rear Axle) (Refer Trailing Guide)
	N79 <b>WHEEL, SPARE:</b> Aluminum, Cast (T10 only) (Reqs N90 Wheels and ZK4 or ZK5 Spare)
	N90 <b>WHEELS:</b> Aluminum, Cast (T10 only) (N/A QAR, QAS or QYP P195 Tires)
	<b>WINDOWS:</b>
	A31 Power, Side Door (Incl w/ZQ2 Conv Pkg)
	AD5 Sliding Side
(2)	CD4 <b>WINDSHIELD WIPER SYSTEM:</b> Intermittent

# S-10 TAHOE

FEATURE OPTION: YC2

*Tahoe Equipment (Incls Visor Mirror, Gage Package with Trip Odometer, Spare Tire Cover, Wheel Trim Rings, Bright Body Side Mldgs and Bright Wheel Opening Mldgs)*

## QUICK-SPEC

EMISSION, ENGINE, TRANSMISSION, AXLE AND TIRE <i>MUST BE ENTERED AS ADDITIONS TO THESE QUICK-SPECS.</i>		B T A 1	B T A 2	B T B 3
Tahoe Equipment	YC2	x	x	x
Air Conditioning	C60	x	x	x
Body: Standard	E55	x	x	x
Console	D55	x	x	x
Mirrors: Bright	D45	x	x	x
Radio: ETR AM/FM Stereo	UU9	x	x	N/I
Seat: Rear, Folding	AM7	x	x	x
Steering: Power	N40	x	x	x
Steering Wheel: Comfortilt	N33	x	x	x
Tank, Fuel	NK2	x	x	x
Battery: Heavy-Duty	UA1		x	x
Floor Coverings: Front	B32		x	x
Floor Coverings: Rear	B33		x	x
Speed Control, Electronic	K34		x	x
Shield: Transfer Case (T10 only)	NY7		x	x
Tailgate Window Release: Power	AU6		x	x
Windshield Wiper System	CD4		x	x
Deflector, Air	C51			x
Defogger, Rear Window	C49			x
Headlamps, Halogen	TT4			x
Lamp, Engine Compartment	U26			x
Operating Convenience Pkg	ZQ2			x
Radio: ETR AM/FM Stereo w/Seek-Scan, Stereo Cassette Tape and Clock	UM6			x

PLEASE REVIEW OPTION RESTRICTIONS BEFORE ORDERING

Q-S	OPTION
—	K46 <b>AIR CLEANER:</b> (Reqs LL2 Eng)
(1)	C60 <b>AIR CONDITIONING:</b> (Reqs N40 Steering) (w/o V02 Cooling Incls V01 Cooling)
—	G80 <b>AXLE, REAR:</b> Locking Differential
✓(2)	UA1 <b>BATTERY:</b> Heavy-Duty, 540 Cold Cranking Amps Delco Freedom (Incl w/V10 Cold Climate)
—	VE6 <b>BUMPER EQUIPMENT:</b>
—	V28 Bumpers, Front and Rear Color-Keyed w/Rub Strips (Reqs ZY6, ZY7 or ZY8 Paint)
—	— <b>CARRIER, LUGGAGE:</b>
—	V54 Painted, Black
—	V55 Bright
—	Z71 <b>CHASSIS EQUIPMENT:</b> Off Road Package (T10 only) (N/A F51 Shocks) (Reqs QEB Tires) (Incls NY7 Shield, ZK5 Spare and V76 Tow Hooks)
—	V10 <b>COLD CLIMATE PACKAGE:</b> (Incls UA1 Battery)
(1)	D55 <b>CONSOLE</b>
—	— <b>COOLING SYSTEM:</b> Heavy-Duty
—	KC4 Engine Oil Cooler (S10 only) (Reqs LL2 Eng, MXD Trans and V01 or V02 Cooling)
—	V01 Radiator (N/A V02 Cooling) (Incl w/C60 Air)
—	V02 Radiator and Transmission Oil Cooler (Reqs LL2 Eng and MXD Trans)
(3)	C51 <b>DEFLECTOR, AIR</b>
(3)	C49 <b>DEFOGGER, REAR WINDOW:</b> Electric
—	AU3 <b>DOOR LOCK SYSTEM, POWER:</b> Side Door (Incl w/ZQ2 Conv Pkg)
(2)	B32 <b>FLOOR COVERING:</b> Mats, Removable Color-Keyed
(2)	B33 Front
—	U16 Rear
—	— <b>GAGE, TACHOMETER</b>
—	— <b>GLASS:</b>
—	AA3 Deep Tinted w/Light Tinted Rear Window (N/A AJ1 Glass)
—	AJ1 Deep Tinted
(3)	TT4 <b>HEADLAMPS, HALOGEN</b>
(3)	K05 <b>HEATER, ENGINE BLOCK</b>
—	U26 <b>LAMP:</b> Engine Compartment
—	— <b>MIRRORS:</b> Exterior, Below Eye-Line Type
—	D44 Black
(1)	D45 Bright
—	— <b>MOLDINGS:</b>
—	B93 Door Edge Guard
—	B74 Wheel Opening, Black

## PLEASE REVIEW OPTION RESTRICTIONS BEFORE ORDERING

Q-S	OPTION	
(3)	ZQ2	<b>OPERATING CONVENIENCE PACKAGE:</b> (Incls AU3 Door Locks and A31 Windows)
---	B3W	<b>PRELIMINARY PRICE INFORMATION</b>
---		<b>RADIO EQUIPMENT:</b>
---	U63	AM Radio
---	U69	AM/FM Radio
(1)	UU9	Electronically Tuned AM/FM Stereo Radio
---	UM7	Electronically Tuned AM/FM Stereo Radio w/Seek-Scan and Digital Clock
(3)	UM6	Electronically Tuned AM/FM Stereo Radio w/Seek-Scan, Stereo Cassette Tape and Digital Clock (Incls U66 Speakers)
---	UX1	Electronically Tuned AM Stereo/FM Stereo Radio w/Seek-Scan, Stereo Cassette Tape with Search and Repeat, Graphic Equalizer and Digital Clock (Incls U66 Speakers)
---	U66	Speakers, Premium Dual Rear (Reqs UM7 or UU9 Radio) (Incl w/UM6 or UX1 Radio)
---	D98	<b>RALLY STRIPING:</b> (Reqs ZY1 Paint and Stripe Color) (Refer Page 3 for Striping)
---		<b>SEATING: (MUST ORDER AM7 or YG4 Seat)</b>
(1)	AM7	Rear, Folding, 2-Passenger
---	YG4	Rear Seat Not Desired (N/A AM7 Seat)
---	A78	<b>SEAT EQUIPMENT:</b> Seat Backs, Reclining
(2)	NY7	<b>SHIELD, TRANSFER CASE:</b> (T10 only) (Incl w/Z71 Chassis Equip)
---	F51	<b>SHOCK ABSORBERS:</b> Front and Rear, Heavy-Duty (N/A Z71 Chassis Equip) (Incl w/F60 Susp)
---		<b>SPARE TIRE, FULL SIZE:</b> (Replaces Standard Compact Spare)
---	ZK4	Highway (N/A QEB, QJL or QJT Tires)
---	ZK5	On-Off Road (S10 Reqs QJL, QJT or Q1C Tires) (T10 Reqs QEB, QJL or QJT Tires) (Incl w/Z71 Chassis Equip)
(2)	K34	<b>SPEED CONTROL, ELECTRONIC</b>
---		<b>STEERING:</b>
---	N51	Power Not Desired
(1)	N40	Power
(1)	N33	<b>STEERING WHEEL:</b> Comfortilt
---	F60	<b>SUSPENSION EQUIPMENT:</b> Front, Heavy-Duty (T10 only) (N/A Z71 Chassis Equip) (Incls F51 Shocks) (Recommended for snowplow type usage only)
(2)	AU6	<b>TAILGATE WINDOW RELEASE, POWER</b>
(1)	NK2	<b>TANK, FUEL:</b> Approx 20 Gallons
---		<b>TIRES:</b> (B/W: Blackwall, W/W: Whitewall, W/L: White Lettered) (Incls Compact Spare Tire)
---		All-Seasons Steel Belted Radial Ply (Front and Rear)
---	QAR	P195/75R-15 B/W (See Power Teams Chart For Axle Restrictions)
---	QAS	P195/75R-15 W/W (See Power Teams Chart For Axle Restrictions)
---	QCE	P205/75R-15 B/W
---	QCF	P205/75R-15 W/L
---		Highway Fiberglass Belted Radial Ply (Front and Rear)
---	QYP	P195/75R-15 B/W (See Power Teams Chart For Axle Restrictions)
---		Steel Belted Radial Ply (Front-Highway and Rear On-Off Road) (CS10516 only)
---	Q1C	P205/75R-15 B/W
---		On-Off Road Steel Belted Radial Ply (Front and Rear) (N/A ZK4 Spare)
---	QJT	P205/75R-15 B/W
---	QJL	P205/75R-15 W/L
---	QEB	P235/75R-15 W/L (CT10516 only) (Reqs ZK5 Spare) (See Power Teams Chart for Axle Restrictions)
---	V76	<b>TOWING DEVICE:</b> Two Front Tow Hooks (T10 only) (Incl w/Z71 Chassis Equip)
---	VR2	<b>TRAILER HITCH:</b> Deadweight Type (N/A Z82 Trailing) (Incl w/Z72 Trailing)
---	Z72	<b>TRAILERING PACKAGE:</b> (N/A Z82 Trailing) (Reqs MX0 Trans and V01 or V02 Cooling, or C60 Air) (w/LN8 Eng Reqs 4.11 Rear Axle)
---	Z82	<b>TRAILERING SPECIAL EQUIPMENT:</b> Heavy-Duty (Reqs LL2 Eng, MX0 Trans, V02 Trans Cooling, and N40 Steering) (S10 Reqs 3.73 Rear Axle) (T10 Reqs 4.11 Rear Axle) (Refer Trailering Guide)
---	N79	<b>WHEEL, SPARE:</b> Aluminum, Cast (T10 only) (Reqs N90 Wheels and ZK4 or ZK5 Spare)
---		<b>WHEELS:</b>
---	N90	Aluminum, Cast (T10 only) (N/A QAR, QAS or QYP P195 Tires)
---	ZJ7	Rally (S10 only)
---		<b>WINDOWS:</b>
---	A31	Power, Side Door (Incl w/ZQ2 Conv Pkg)
---	AD5	Sliding Side
(2)	CD4	<b>WINDSHIELD WIPER SYSTEM:</b> Intermittent

**QUICK-SPEC**

**EMISSION, ENGINE, TRANSMISSION,  
AXLE AND TIRE MUST BE  
ENTERED AS ADDITIONS TO  
THESE QUICK-SPECS.**

		<b>B B A 1</b>	<b>B B A 2</b>	<b>B B A 3</b>
Body: Standard .....	E55	x	x	x
Console .....	D55	x	x	x
Gages: Volt, Temp and Oil Pressure w/Trip Odometer .....	Z53	x	x	x
Radio: ETR AM/FM Stereo .....	UU9	x	x	N/I
Seat: Rear, Folding .....	AM7	x	x	x
Steering: Power .....	N40	x	x	x
Tank, Fuel .....	NK2	x	x	x
Air Conditioning .....	C60		x	x
Battery: Heavy-Duty .....	UA1		x	x
Mirrors: Bright .....	D45		x	x
Shield: Transfer Case (T10 only) .....	NY7		x	x
Steering Wheel: Comfortilt .....	N33		x	x
Deflector, Air .....	C51			x
Moldings: Body Side and Wheel Opening .....	B84			x
Operating Convenience Pkg .....	ZQ2			x
Radio: ETR AM/FM Stereo w/Seek-Scan, Stereo Cassette Tape & Clock .....	UM6			x
Speed Control, Electronic .....	K34			x
Tailgate Window Release: Power .....	AU6			x

**PLEASE REVIEW OPTION RESTRICTIONS BEFORE ORDERING**

**Q-S OPTION**

- \_\_\_ ~~K46~~ **AIR CLEANER:** (Reqs LL2 Eng)
- (2) C60 **AIR CONDITIONING:** (Reqs N40 Steering) (w/o V02 Cooling Incls V01 Cooling)
- \_\_\_ G80 **AXLE, REAR:** Locking Differential
- (2) UA1 **BATTERY:** Heavy-Duty, 540 Cold Cranking Amps Delco Freedom (Incl w/V10 Cold Climate)
- \_\_\_ **BUMPER EQUIPMENT:**
- \_\_\_ VE6 Bumpers, Front and Rear Color-Keyed w/Rub Strips (Reqs ZY6, ZY7 or ZY8 Paint)
- \_\_\_ V28 Bumper Guards, Front only. Black
- \_\_\_ **CARRIER, LUGGAGE:**
- \_\_\_ V54 Painted. Black
- \_\_\_ V55 Bright
- \_\_\_ Z71 **CHASSIS EQUIPMENT:** Off Road Package (T10 only) (N/A F51 Shocks) (Reqs QEB Tires) (Incls NY7 Shield, V76 Tow Hooks, ZK5 Spare and P06 Trim Rings)
- \_\_\_ V10 **COLD CLIMATE PACKAGE:** (Incls UA1 Battery)
- (1) D55 **CONSOLE**
- \_\_\_ **COOLING SYSTEM:** Heavy-Duty
- \_\_\_ KC4 Engine Oil Cooler (S10 only) (Reqs LL2 Eng, MX0 Trans and V01 or V02 Cooling)
- \_\_\_ V01 Radiator (N/A V02 Cooling) (Incl w/C60 Air)
- \_\_\_ V02 Radiator and Transmission Oil Cooler (Reqs LL2 Eng and MX0 Trans)
- \_\_\_ P17 **COVER, SPARE TIRE:** (Incl w/CARRIER)
- (3) C51 **DEFLECTOR, AIR**
- \_\_\_ C49 **DEFOGGER, REAR WINDOW:** Electric
- \_\_\_ AU3 **DOOR LOCK SYSTEM, POWER:** Side Door (Incl w/ZQ2 Conv Pkg)
- \_\_\_ **GAGES:**
- \_\_\_ U16 Gage, Tachometer (Incls Z53 Gages)
- (1) Z53 Voltmeter, Temperature and Oil Pressure w/Trip Odometer (Incl w/U16 Gage)
- \_\_\_ **GLASS:**
- \_\_\_ AA3 Deep Tinted w/Light Tinted Rear Window (N/A AJ1 Glass)
- \_\_\_ AJ1 Deep Tinted
- \_\_\_ TT4 **HEADLAMPS, HALOGEN**
- \_\_\_ K05 **HEATER, ENGINE BLOCK**
- \_\_\_ U26 **LAMP:** Engine Compartment
- \_\_\_ **MIRRORS:**
- \_\_\_ D34 Visor
- \_\_\_ D44 Exterior, Below Eye-Line Type. Black
- (2) D45 Exterior, Below Eye-Line Type. Stainless Steel

**PLEASE REVIEW OPTION RESTRICTIONS BEFORE ORDERING**

<u>Q-S</u>	<u>OPTION</u>	
		<b>MOLDINGS:</b>
(3)	B84	Body Side and Wheel Opening (Incl w/ZY8 Paint) (Incls B96 Mldgs)
---	B93	Door Edge Guard
---	B74	Wheel Opening, Black (N/A B96 Mldgs)
---	B96	Wheel Opening, Bright (Incl w/B84 Mldgs)
(3)	ZQ2	<b>OPERATING CONVENIENCE PACKAGE:</b> (Incls AU3 Door Locks and A31 Windows)
---	B3W	<b>PRELIMINARY PRICE INFORMATION</b>
		<b>RADIO EQUIPMENT:</b>
---	U63	AM Radio
---	U69	AM/FM Radio
(1)	UU9	Electronically Tuned AM/FM Stereo Radio
---	UM7	Electronically Tuned AM/FM Stereo Radio w/Seek-Scan and Digital Clock
(3)	UM6	Electronically Tuned AM/FM Stereo Radio w/Seek-Scan, Stereo Cassette Tape and Digital Clock (Incls U66 Speakers)
---	UX1	Electronically Tuned AM Stereo/FM Stereo Radio w/Seek-Scan, Stereo Cassette Tape with Search and Repeat, Graphic Equalizer and Digital Clock (Incls U66 Speakers)
---	U66	Speakers, Premium Dual Rear (Reqs UM7 or UU9 Radio) (Incl w/UM6 or UX1 Radio)
		<b>SEATING: (MUST ORDER AM7 or YG4 Seat)</b>
(1)	AM7	Rear, Folding, 2-Passenger
---	YG4	Rear Seat Not Desired (N/A AM7 Seat)
---	A78	<b>SEAT EQUIPMENT:</b> Seat Backs, Reclining
(2)	NY7	<b>SHIELD, TRANSFER CASE:</b> (T10 only) (Incl w/Z71 Chassis Equip)
---	F51	<b>SHOCK ABSORBERS:</b> Front and Rear, Heavy-Duty (N/A Z71 Chassis Equip) (Incl w/F60 Susp)
		<b>SPARE TIRE, FULL SIZE:</b> (Replaces Standard Compact Spare)
---	ZK4	Highway (N/A QEB, QJL or QJT Tires)
---	ZK5	On-Off Road (S10 Reqs QJL, QJT or Q1C Tires) (T10 Reqs QEB, QJL or QJT Tires) (Incl w/Z71 Chassis Equip)
(3)	K34	<b>SPEED CONTROL, ELECTRONIC</b>
		<b>STEERING:</b>
---	N51	Power Not Desired
(1)	N40	Power
(2)	N33	<b>STEERING WHEEL:</b> Comfortilt
		<b>STRIPING:</b> (Refer Color and Trim Chart for Availability)
---	D85	Body (Reqs ZY1 Paint) (Stripe Color Incl w/ZY7 Paint) (N/A B84 Moldings) (Refer Page 2 for Striping)
---	D98	Rally (Reqs ZY1 Paint and Stripe Color) (Refer Page 3 for Striping)
---	F60	<b>SUSPENSION EQUIPMENT:</b> Front, Heavy-Duty (T10 only) (N/A Z71 Chassis Equip) (Incls F51 Shocks) (Recommended for snowplow type usage only)
(3)	AU6	<b>TAILGATE WINDOW RELEASE, POWER</b>
(1)	NK2	<b>TANK, FUEL:</b> Approx 20 Gallons
		<b>TIRES:</b> (B/W: Blackwall, W/W: Whitewall, W/L: White Lettered) (Incls Compact Spare Tire)
		All-Seasons Steel Belted Radial Ply (Front and Rear)
---	QAR	P195/75R-15 B/W (See Power Teams Chart For Axle Restrictions)
---	QAS	P195/75R-15 W/W (See Power Teams Chart For Axle Restrictions)
---	QCE	P205/75R-15 B/W
---	QCF	P205/75R-15 W/L
---	QYP	Highway Fiberglass Belted Radial Ply (Front and Rear)
---	Q1C	P195/75R-15 B/W (See Power Teams Chart For Axle Restrictions)
---	QJT	Steel Belted Radial Ply (Front-Highway and Rear On-Off Road) (CS10516 only)
---	QJL	P205/75R-15 B/W
---	QEB	P205/75R-15 W/L
---	V76	P235/75R-15 W/L (CT10516 only) (See Power Teams Chart For Axle Restrictions) (Reqs ZK5 Spare)
---	VR2	<b>TOWING DEVICE:</b> Two Front Tow Hooks (T10 only) (Incl w/Z71 Chassis Equip)
---	Z72	<b>TRAILER HITCH:</b> Deadweight Type (N/A Z82 Trailing) (Incl w/Z72 Trailing)
---	Z82	<b>TRAILERING PACKAGE:</b> (N/A Z82 Trailing) (Reqs MX0 Trans, V01 or V02 Cooling or C60 Air) (w/LN8 Eng Reqs 4.11 Rear Axle)
---	Z82	<b>TRAILERING SPECIAL EQUIPMENT:</b> Heavy-Duty (Reqs LL2 Eng, MX0 Trans, V02 Trans Cooling, and N40 Steering) (S10 Reqs 3.73 Rear Axle) (T10 Reqs 4.11 Rear Axle) (Refer Trailing Guide)
---	N79	<b>WHEEL, SPARE:</b> Aluminum, Cast (T10 only) (Reqs N90 Wheels and ZK4 or ZK5 Spare)
---	P06	<b>WHEEL TRIM:</b> Trim Rings (Incl w/Z71 Chassis Equip)
		<b>WHEELS:</b>
---	N90	Aluminum, Cast (T10 only) (N/A QAR, QAS or QYP P195 Tires)
---	ZJ7	Rally (S10 only)
		<b>WINDOWS:</b>
---	A31	Power, Side Door (Incl w/ZQ2 Conv Pkg)
---	AD5	Sliding Side
---	CD4	<b>WINDSHIELD WIPER SYSTEM:</b> Intermittent

---

**NOTES**

PLEASE READ THIS FORM CAREFULLY  
DEALER ORDER FORM

# SPECIAL ACCESSORIES PACKAGE FOR CHEVROLET BLAZER

BY  
**CARS & CONCEPTS, INC.**

#### CARS & CONCEPTS SHIP-THROUGH PROGRAM

Cars & Concepts is offering to Chevrolet dealers the Skylite™ Electric Sunroof and Teak Woody for S/T-10 Blazer vehicles. In addition Cars & Concepts/Delco Electronics have joined forces to offer an enhanced sound system available with the Skylite Electric Sunroof or Teak Woody options.

The Cars & Concepts Skylite Electric Sunroof and Teak Woody are available for all S/T-10 Blazer option levels.

#### SKYLITE™ ELECTRIC SUNROOF

- Glass panel retracts fully into the roof assembly
- Solar-tinted glass
- Vents into a pop-up position
- Built-in wind deflector
- Flush fitting design
- Smooth quiet operation
- Louvered sun shade for improved ventilation
- Least headroom loss of any electric sunroof
- Four point drain system
- Weight advantage compared to other electric sunroofs

#### WOODY PACKAGE (Available 2-1-86)

- Durable, weather-resistant teak
- High quality and craftsmanship
- Minimal maintenance
- Adds a luxurious touch

#### WOODY PACKAGE RESTRICTIONS

- Sport Two-Tone RPO-ZY7
- Special Two-Tone RPO-ZY8
- Rally Striping RPO-D98

#### CARS & CONCEPTS/DELCO ELECTRONICS ENHANCED SOUND SYSTEM

- Two front speaker enclosures with 6" high sensitivity speaker midrange and separate tweeters provide improved mid and high frequency performance.
- Two rear 6" x 9" extended range dual cone speakers with modified speaker enclosures for increased base response.

#### MANDATORY SPECIFICATIONS FOR SOUND SYSTEM

- Power windows (RPO-A31)
- Delco premium stereo (RPO-UX1 or RPO-UM6)
- Delete factory speakers (SEO-8N9) (Factory credit for front and rear speakers)
- Must be ordered with Skylite Electric Sunroof or Teak Woody

#### ORDERING INFORMATION

- CC 01 Skylite Electric Sunroof
  - CC 02 Skylite Electric Sunroof and Cars & Concepts/Delco Electronics Enhanced Sound System
  - CC 03 Skylite Electric Sunroof, Cars & Concepts/Delco Electronics Enhanced Sound System and Teak Woody
  - CC 04 Teak Woody
  - CC 05 Teak Woody and Cars & Concepts/Delco Electronics Enhanced Sound System
  - CC 06 Teak Woody and Skylite Electric Sunroof
- This program was created by Cars & Concepts, Inc. of Brighton, Michigan and Shreveport, Louisiana. Should legal action be necessary for the interpretation and/or enforcement of this order, Cars & Concepts, Inc. shall be entitled to reasonable costs and attorney fees.

#### PRICING INFORMATION

See enclosed Dealer and Suggested Retail Price Sheets for the Skylite Electric Sunroof, Teak Woody and the Optional Cars & Concepts/Delco Electronics Enhanced Sound System.

#### \*MANDATORY PROCESSING CODES FOR SHIP-THROUGH PROGRAM

Dealer must insert Mandatory Processing Code.

- Receive vehicles from Pontiac, Michigan use dealer code TCX.
- Receive vehicles from Shreveport, Louisiana use dealer code TCX.

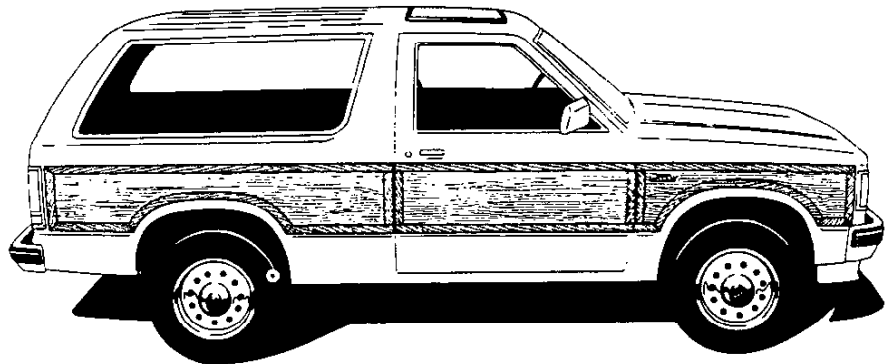
#### REPLACEMENT PARTS

Replacement parts are available by ordering directly through Cars & Concepts, Inc., 12500 E. Grand River Avenue, Brighton, Michigan 48116, 1-800/227-7016. In Mich. 313.227-7400 (ask for order desk). Information regarding assembly and delivery should be directed to the above address.

#### WARRANTY

Cars & Concepts, Inc. warrants the product for 12 months or 12,000 miles, covering any defects in material or workmanship on all items that have been installed by Cars & Concepts, Inc.

Content, pricing and illustrations are based on authorized information. Specifications and options may change after printing date. Contact Cars & Concepts for latest information. 10/1/85



**Important:** No order will be accepted without Zone/Dealer code, Chevrolet order form number, and dealer signature.

PLEASE USE A SEPARATE ORDER FORM FOR EACH VEHICLE ORDERED

#### ORDER DATA

Chevrolet Vehicle Order No. \_\_\_\_\_ \*Processing Code (See Above) \_\_\_\_\_ Dealer Code \_\_\_\_\_

Dealer Name \_\_\_\_\_

Address \_\_\_\_\_

City \_\_\_\_\_ State \_\_\_\_\_ Zip \_\_\_\_\_

Telephone No. \_\_\_\_\_ / \_\_\_\_\_  
AREA CODE

Dealership Contact \_\_\_\_\_ Title \_\_\_\_\_

Name of Retail Customer (If Sold) \_\_\_\_\_

Dealer Signature \_\_\_\_\_ Date \_\_\_\_\_

Mail form to Cars & Concepts, Inc., 12500 E. Grand River Avenue, Brighton, Michigan 48116 (Attn. Order Desk). Retain goldenrod copy for your file.



## CARS & CONCEPTS

12500 E. GRAND RIVER AVENUE BRIGHTON, MI 48116

---

---



# SPECIAL ACCESSORIES PACKAGE FOR CHEVROLET BLAZER

---

## RETAIL PRICE SHEET

---

	<u>Suggested Retail</u>
CC01 - Cars & Concepts Skylite Electric Sunroof	\$ 895.00
CC02 - Cars & Concepts Skylite Electric Sunroof and Cars & Concepts/Delco Electronics Enhanced Sound System	1,165.00
CC03 - Cars & Concepts Skylite Electric Sunroof, Cars & Concepts/Delco Electronics Enhanced Sound System and Teak Woody	2,490.00
CC04 - Teak Woody	1,325.00
CC05 - Teak Woody and Cars & Concepts/Delco Electronics Enhanced Sound System	1,595.00
CC06 - Teak Woody and Cars & Concepts Skylite Electric Sunroof	2,220.00



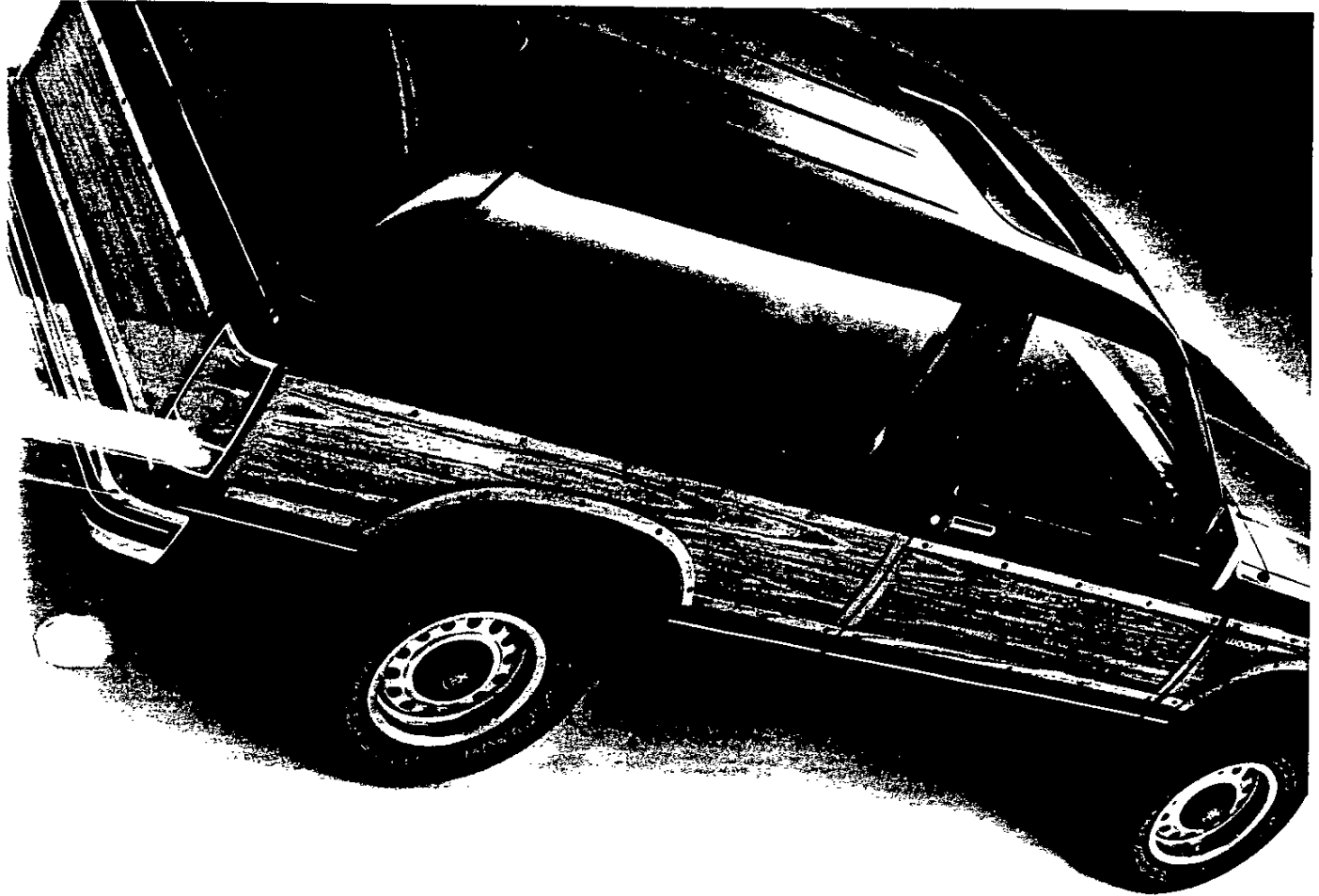
**CARS &  
CONCEPTS**

12500 E. GRAND RIVER, BRIGHTON, MI 48116, PH. 800/227-7016, 313/227-1400

---

---

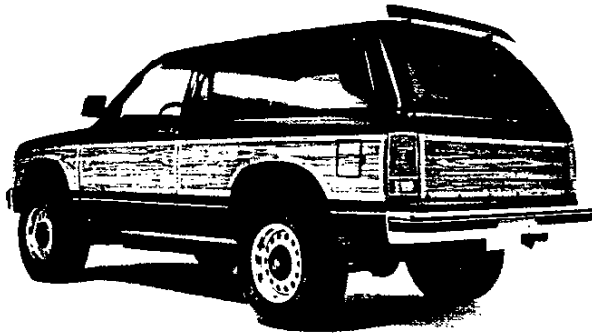
1986



SPECIAL ACCESSORY PACKAGES FROM CARS & CONCEPTS  
FOR 1986 S&T SERIES TRUCKS



## WOODY PACKAGE

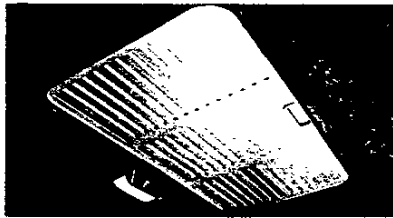


Add the rich styling of genuine teakwood to your S or T series truck. Each Woody is handcrafted of solid, natural teakwood in the classic tradition of the world's finest yachts. The oiled teakwood finish has long been recognized for its ease of maintenance and durability against the elements. Periodic oiling of the trim with any readily available teak oil will enhance and preserve the beauty of your Woody.

## SKYLITE™ ELECTRIC SUNROOF



The innovative design of the Skylite Electric Sunroof facilitates ease of operation while providing luxury at its best. The solar glass panel retracts fully into the roof assembly and has a built-in wind deflector for "clean" aerodynamic performance and profile.



The interior styling features finely tailored finish trim and allows greater headroom than any other electric sunroof. You even have a vented sunshade to allow air circulation while keeping the hot sun out.

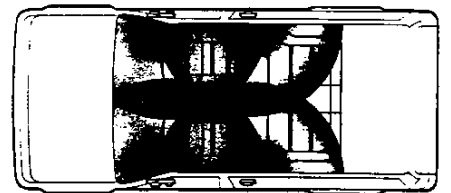


One convenient button allows you to retract the sunroof to any position or pop-up the sunroof into a venting position. The lightweight series 32 Skylite also features a four point water management system for worry free performance.

## SOUND ENHANCEMENT PACKAGE



The Delco enhanced sound system is available with the Woody Package or the Skylite Electric Sunroof. This sound system consists of two front speaker enclosures, equipped with 6" high sensitivity midrange speakers and separate tweeters that provide improved mid and high frequency performance. The two rear speakers are 6" x 9" extended range dual cones with modified speaker enclosures for increased bass response. This option makes your truck sound as good as it looks!



## WARRANTY

All Cars & Concepts products are produced with high quality materials and craftsmanship. Our complete line of automotive and truck accessories is covered by a 12 month, 12,000 mile limited warranty covering defects in materials and workmanship. Specifications and availability subject to change.



**CARS &  
CONCEPTS**

12500 E. GRAND RIVER AVENUE BRIGHTON, MI 48116  
(313) 227-1400

DEALER IMPRINT

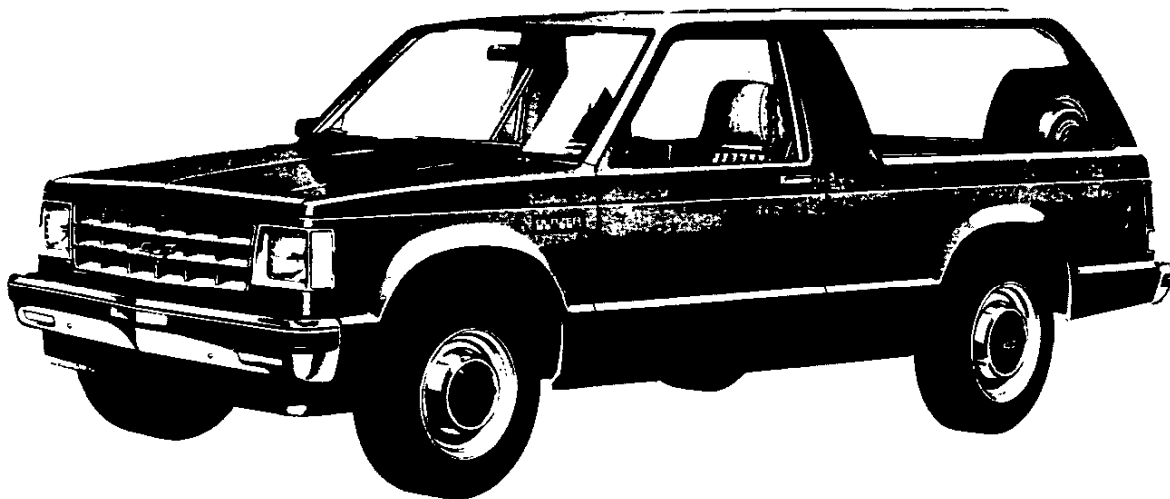
# **S-10/15 BLAZER/JIMMY 2- & 4-WHEEL DRIVE**

**CAB & BODY FEATURES  
SEATING ARRANGEMENTS  
CAB DIMENSIONS  
COLOR & TRIM CHARTS  
TWO-TONES**

# S-10/15 BLAZER/JIMMY 2- & 4-WHEEL DRIVE

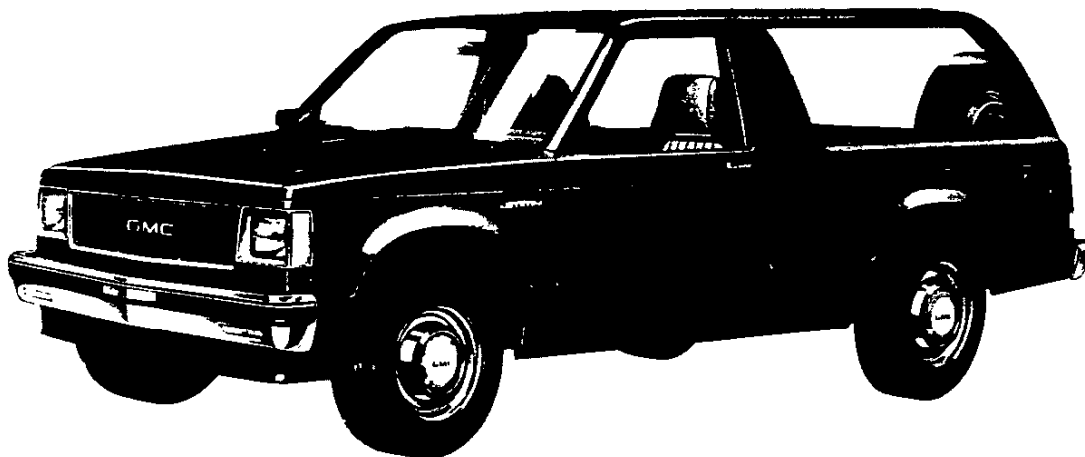
## STANDARD MODEL—FEATURES

The standard models include the following items as standard equipment



### EXTERIOR

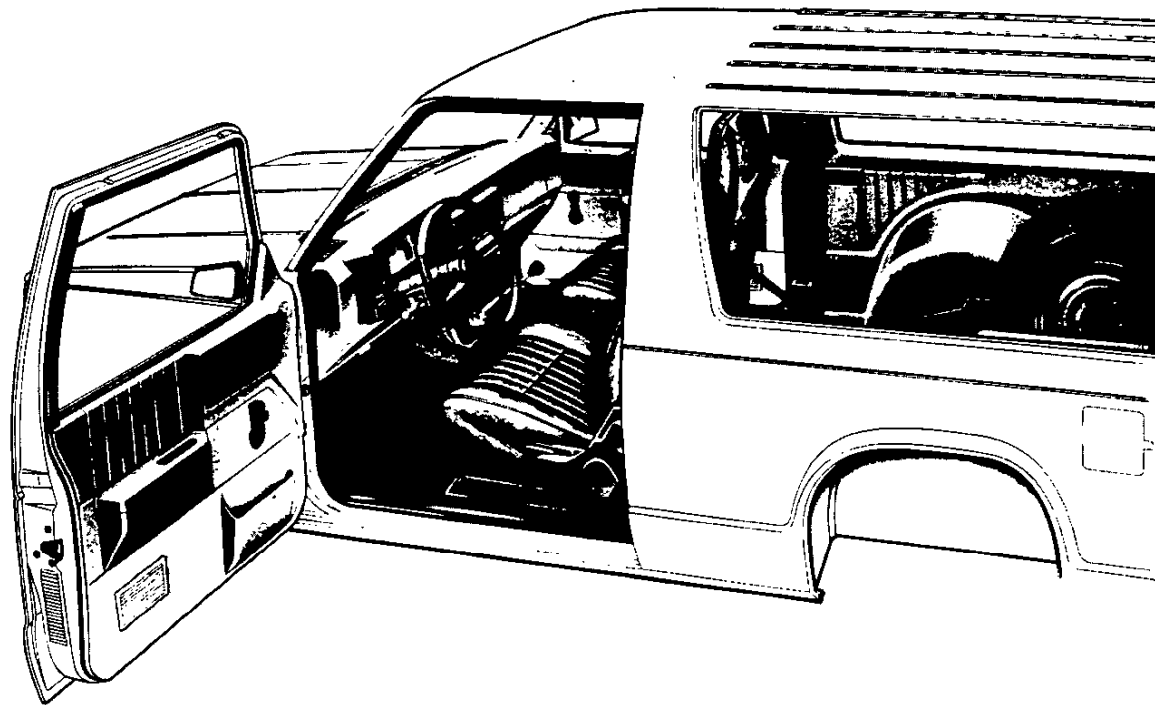
- **Bumper:** Front and rear, chromed with black rub strips; front bumper incorporates parking lamps
- **Color:** See Interior and Exterior Color Selection Chart
- **Endgate-Liftglass:** Single pivot hinges on endgate and liftglass; latches on each side of endgate and at center for liftglass; gas cylinders attached to the black metal glass frame operate liftglass and provide check; cable checks on endgate; lift handle on glass. Center Key operated lock releases liftglass when turned to the left and endgate latches when turned to the right.
- **Glass:** Tinted, all windows
- **Grille:** Molded plastic; chrome and black; integral Chevrolet emblem/GMC letters at center of grille
- **Headlamp-Parking Lamp Bezels:** Molded plastic with chromed finish and black trim
- **Horn:** Single, electric, high-note
- **Hub Caps:** Bright metal with black trim
- **Keys:** Two-key system; with separate keys for ignition switch and door locks
- **Lettering, Endgate:** Black or silver decal on embossed Chevrolet/GMC letters depending on exterior color
- **Lights:**
  - Backup lamps: Two rear (integral with taillamps)
  - Combination parking/direction/hazard: Two front
  - Combination tail/stop/direction/hazard: Two rear
  - Headlamps: Two, rectangular
  - License plate lamp: Single rear
  - Side marker lamps with reflectors: Two front; two rear (integral with taillamps)
- **Mirrors:** RH and LH fixed arm with adjustable 6½" wide x 4" high aerodynamic heads; low gloss black finish. RH mirror is convex
- **Moldings:** Low-gloss black windshield and rear window
- **Nameplates:** Bright "Blazer/Jimmy" nameplates on front fenders near doors. 4-wheel-drive models have a "4X4" nameplate mounted below the fender nameplate
- **Wheels:** Painted argent
- **Windshield Wipers and Washers:** Electric, 2-speed wipers with low-gloss black finish on exposed metal portions; coordinated washer with fluidic oscillator at center of plenum inlet grille



# S-10/15 BLAZER/JIMMY 2- & 4-WHEEL DRIVE

## STANDARD MODEL—FEATURES

The standard models include the following items as standard equipment



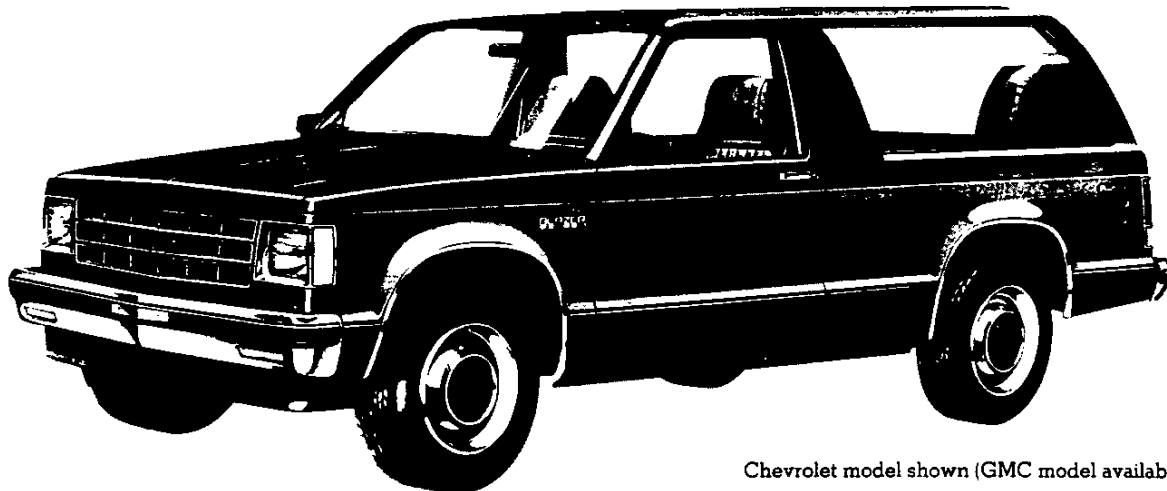
### INTERIOR

- **Armrests:** RH and LH padded; integral with door trim panels
- **Ashtray:** In middle of instrument panel
- **Cigar Lighter:** With ashtray light
- **Coat Hook:** RH side
- **Colors:**
  - Painted areas: Same as exterior primary color choice
  - Interior trim: Coordinated with seat trim color choice
- **Dome Lamps:** Front and rear; with bright trim
- **Door Sill Plates:** Door-opening protection and floor mat retention; full-length; black plastic. Color-keyed plastic endgate scuff plate
- **Door Trim Panels:** Color-keyed, embossed molded plastic with integral armrests; black trim plate in regulator area
- **Floor Covering:** Color-keyed rubber mat for entire floor area
- **Headliner:** Color-keyed; full coverage molded styrene full foam with color-keyed cloth cover. 4-wheel-drive models have a color-keyed grab handle mounted over RH door
- **Headlamp Warning Buzzer**
- **Heater and Defogger:** Deluxe outside air type with power center and outboard instrument panel vents and side window defoggers
- **Hood Lock Release:** Handle located on LH side of instrument panel
- **Instrument Cluster Bezel:** Argent finish with bright trim
- **Instruments:**
  - Gages: Speedometer, odometer and fuel
  - Switches: Main, for control of exterior lights, instrument cluster lights, and cab interior lights; combination steering column switch for direction signals by moving lever up and down, headlamp beams by moving lever fore and aft, and windshield wiper and washer by turning lever to wipe and pressing lever in to wash; hazard warning; heater fan; ignition with key-in warning buzzer
  - Warning lights: Seat belt, service-parking brake, direction/hazard signal, and high beam
- **Instrument Panel Control Knobs:** Soft black plastic (except heater and wiper-washer controls) with white graphic identification
- **Instrument Panel Pad:** Color-keyed, energy-absorbing foam type with injection molded plastic substrate
- **Insulation and Sound Deadening Material:** On dash (fire-wall), under floor mat, spray deadener inside of doors, plugs on windshield pillars, on roof underside, and on headliner
- **Lights:** Instrument cluster, door-operated courtesy and dome lamps, and glove box lamp
- **Mirror, Rearview:** 10" prismatic with soft vinyl rim
- **Pillar Trim Moldings:** Color-keyed molded plastic on windshield pillars
- **Seats:** Driver and passenger, foam padded high back bucket type with leather grained custom vinyl trim. RH seat includes easy entry feature. See Interior and Exterior Color Selection Chart for color and trim availability
- **Seat Belts:** Driver and passenger non-detachable combination lap and shoulder belts with emergency-locking retractors. Seat belts are color-keyed with pushbutton type buckles
- **Spare Tire Mounting:** On LH side panel behind wheelhousing  
Note: P205 and P235 full-size spare tire and wheel (available at extra cost) are stored flat at rear of body on floor.
- **Steering Wheel and Column:** 15¼" deluxe color-keyed soft plastic wheel with 2 spokes; deluxe color-keyed energy-absorbing steering column with anti-theft locking feature
- **Stowage Box:** In RH side of instrument panel; with bright key-operated lock and "S-10/S-15 Sierra" nameplate; lock operated by door key
- **Sunshades:** RH and LH padded; color-keyed
- **Tools:** Mechanical jack and wheel wrench behind seat on RH side

## S-10/15 BLAZER/JIMMY 2- & 4-WHEEL DRIVE

### TAHOE/SIERRA CLASSIC MODEL OPTION—RPO YC2

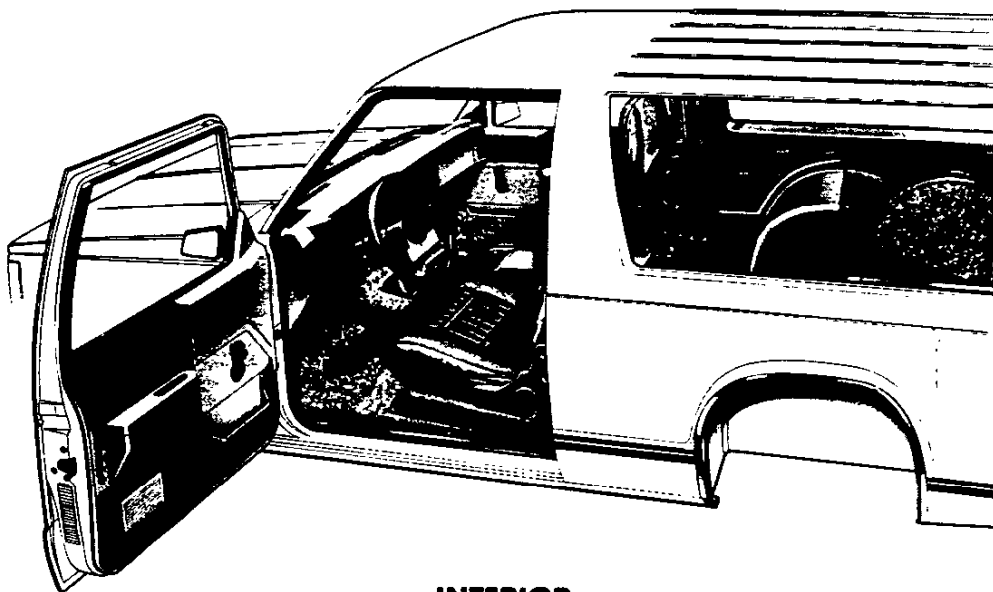
This option includes all standard model items plus the additions or substitutions listed below



Chevrolet model shown (GMC model available)

#### EXTERIOR

- **Bright Appearance Items:**
  - Body side molding trim
  - Bright wheel opening lip moldings
  - Wheel trim rings
- **Cab-to-Fender Insulators**
- **Door Handle Inserts:** Body color
- **Hood Insulator**
- **Moldings:** Black plastic body side moldings with bright insert and rear quarter window moldings
- **Endgate Trim:** Black applique with bright "Chevrolet/GMC" lettering and trim



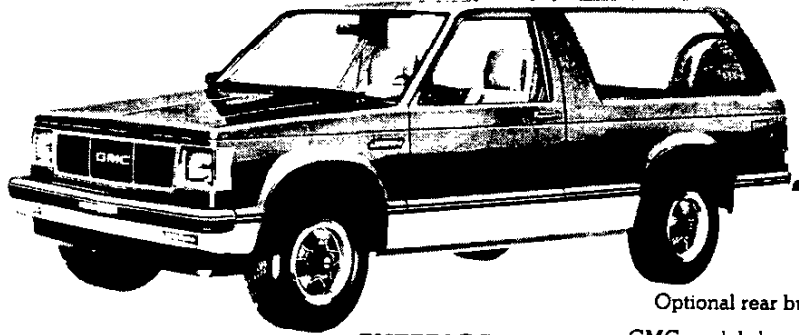
#### INTERIOR

- **Bright Appearance Items:**
  - "Tahoe/Sierra Classic" nameplate on stowage box door
  - Trim on instrument cluster bezels
  - Trim on door trim panels
- **Door Trim Panels:** Sport cloth insert plus brush-finished applique in regulator area; carpeted lower insert with pocket, plus coin holder in LH door
- **Floor Covering:** Color-keyed carpeting for entire floor area
- **Instrument Cluster:** Voltmeter, oil pressure gage and engine temperature gage replace warning lamps; also includes trip odometer
- **Instrument Cluster Bezel:** Brushed aluminum with bright trim
- **Insulation and Sound Deadening Material:** On plenum panels (part of specific dash mat), under floor carpeting, extra-trim on headliner, on door trim panels, and on lower portion of instrument panel
- **Seats:** Choice of: 1) leather grained custom vinyl trim; 2) dual-tone woven special custom cloth/vinyl trim. Also available at extra cost: High Country sheepskin bucket seats. See Interior and Exterior Color Selection Chart for color and trim availability
- **Spare Tire Cover:** Color-keyed carpet and vinyl
- **Trim Panels and Moldings:** Color-keyed cowl kick panels; lower rear quarter and endgate panels and jack cover
- **Visor Mirror:** On RH sun visor



## S-10/15 BLAZER/JIMMY 2- & 4-WHEEL DRIVE SPORT/GYPSY MODEL OPTION—RPO YC3

This option includes all items in the Tahoe/Sierra Classic model option plus the additions or substitutions listed below

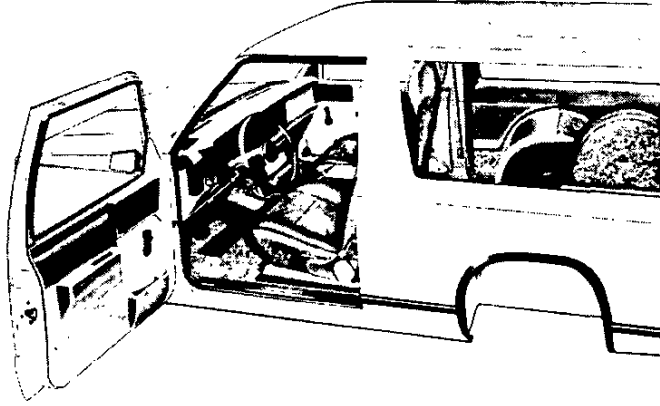


Optional rear bumper shown in illustration  
GMC model shown (Chevrolet model available)

### EXTERIOR

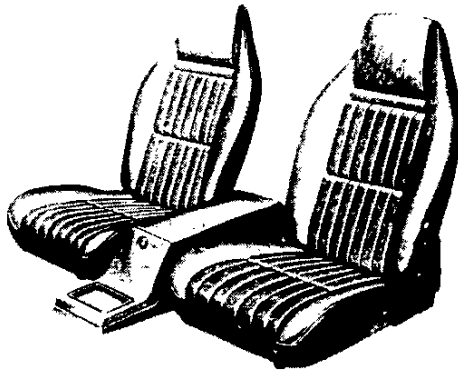
- **Bright Appearance Items:**  
Delete bright wheel opening lip moldings
- **Bumpers:** Color-keyed to lower accent color, with black rub strips
- **Door Handles:** Black chrome; also includes black chrome key cylinder covers
- **Endgate Trim:** Black applique with bright "Chevrolet/GMC"

- lettering and trim
- **Grille:** Black chrome grille and headlamp bezels
- **Two-Tone Paint:** ZY7 lower-accent paint
- **Wheels:** Styled; painted argent with black trim; includes black ornamental hubs and red stripe on 2-wheel drive models. Black ornamental hubs and trim rings on 4-wheel drive models.
- **Wheel Opening Lip Moldings:** Black plastic



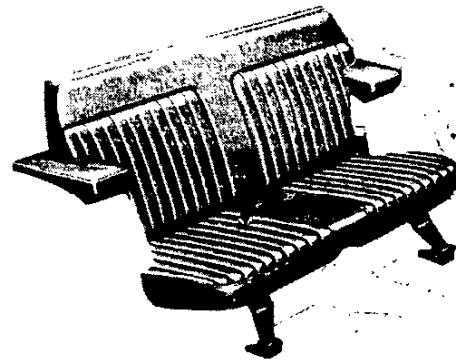
### INTERIOR

- **Bright Appearance Items:**  
"Sport/Gypsy" nameplate on stowage box door  
Trim on steering wheel
- **Console:**  
Color-keyed molded plastic with lockable stowage compartment; lock operated by door key
- **Seats:** High back, reclining buckets with sport cloth trim. Also available at extra cost: High Country sheepskin trim. See Interior and Exterior Color Selection Chart for color and trim availability
- **Steering Wheel:** Color-keyed sport type with bright shroud



### STANDARD FRONT BUCKET SEATS

Consists of two high back bucket-type seats with foam padding and folding backrests with inertia latches. RH seat includes easy entry feature. A lockable color-keyed plastic center console with spacious stowage compartment is available. This console is included when the Sport/Gypsy Model Option is ordered.

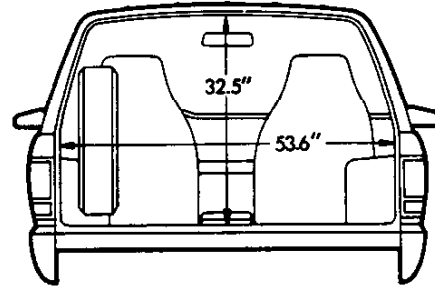
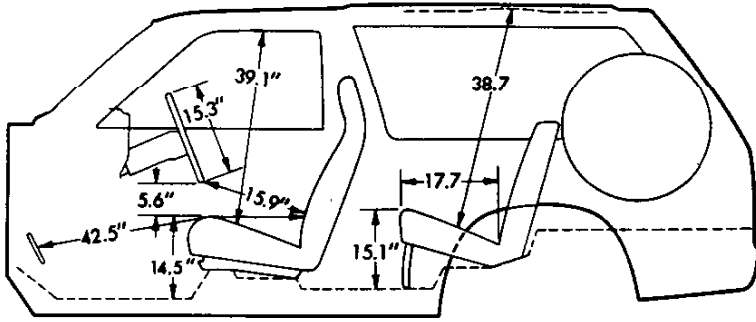


### REAR FOLDING SEAT

This two-passenger seat is available on all models, and seat trim matches front seats when Custom Vinyl or Special Custom cloth is ordered. When High Country Sheepskin front seats are ordered, rear folding seat trim is Saddle Tan Special Custom cloth. The seat cushion pivots forward and down and the seat back folds on to it to provide a flat floor over the entire load area. Armrests are included and attached to wheel housings. A zipper pocket is also included below armrests when Tahoe/Sierra Classic or Sport/Gypsy trim is ordered. Two seat belts included.

# S-10/15 BLAZER/JIMMY 2- & 4-WHEEL DRIVE

## DIMENSIONS\*

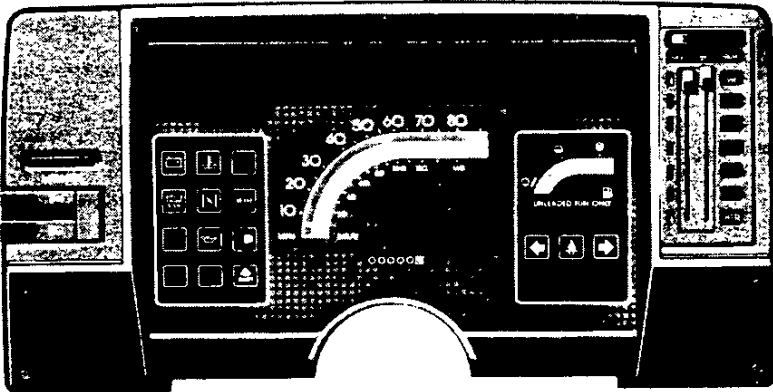


### Glass Area (sq in)

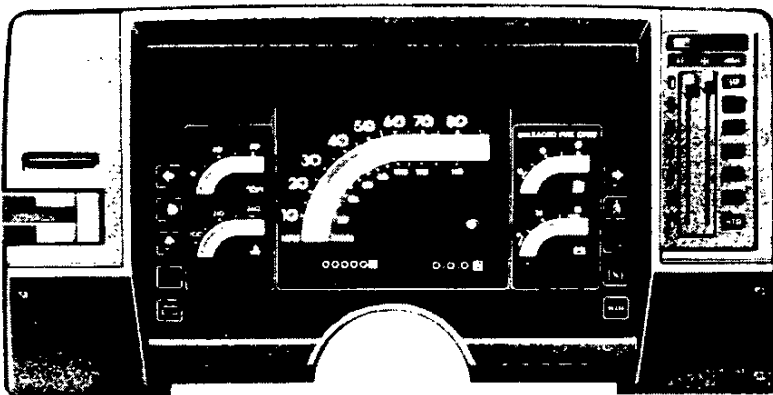
Windshield .....	1138.5	Rear side windows (each side) .....	752.0
Front side door window (each side) .....	409.5	Rear window .....	757.0

*\*All interior dimensions measured with front seat in rearmost position. Seat travel is 5"*

## INSTRUMENT CLUSTER



**Standard Cluster** with warning lights for engine temperature, generator, and oil pressure.



**Optional Cluster (RPO Z53)** with volt-meter, engine temperature gage, oil pressure gage and trip odometer. Included with tachometer (RPO U16) and in Tahoe/Sierra Classic model options (RPO YC2) and Sport/Gypsy model options (RPO YC3) along with bright brush-finished trim, as illustrated. Cluster faceplate for standard models has argent finish. When the optional tachometer is ordered, it replaces the regular fuel gage, and another fuel gage is added.

# S-10/15 BLAZER/JIMMY 2- & 4-WHEEL DRIVE

## INTERIOR AND EXTERIOR COLOR AVAILABILITY CHART

### WITH D85 BODY STRIPING

**Please Note:** Below are the interior trim color and exterior paint combinations recommended by Chevrolet/GMC. The only available color code 1/color code 2 exterior color combinations are those shown in the chart below; however, any available interior trim color may be ordered with one of these exterior color combinations if that particular combination is desired by the customer.

INTERIOR COLORS		Decor	Blue	Carmine	Charcoal	Saddle Tan	D85 STRIPING CHART RECOMMENDED COMBINATIONS: Additional stripe combinations are available except where N/A is shown, provided the dealer orders (D60) as verification (N/A B84 YC2 or YC3)							
<b>STANDARD INTERIOR</b> Custom Vinyl High Back Bucket Seats		31u	XDD4	XRR4	XJJ4	XSS4								
<b>TAHOE/SIERRA CLASSIC</b> Custom Vinyl High Back Bucket Seats		YC2	XDD4	XRR4	XJJ4	XSS4								
Special Custom Cloth High Back Bucket Seats			HDD4	HRR4	HJJ4	HSS4								
High Country Sheepskin High Back Bucket Seats*														
<b>SPORT/GYPSY</b> (Reqs. ZY6 or ZY7 Paint) Deluxe Cloth High Back Bucket Seats		YC3			DJJ4	DSS4								
High Country Sheepskin High Back Bucket Seats*														
EXTERIOR COLORS w/ZY1 PAINT	Color Code 1	Color Code 2	RECOMMENDED INTERIOR TRIM COLORS				STRIPING COLORS							
							Black 19A	Blue, Dark 28A	Gold 67A	Red 72A	Silver 17A	White 12A		
BLACK, MIDNIGHT	19	19		X				N/A		X				
BLACK, MIDNIGHT	19	19			X			N/A			X			
BLACK, MIDNIGHT	19	19				X		N/A	X					
BLUE, GALAXY (Metallic)	28	28	X		X		N/A	N/A				X		
BLUE, GALAXY (Metallic)	28	28				X	N/A	N/A	X					
BLUE, LIGHT (Metallic)	21	21	X		X			X	N/A	N/A				
BRONZE, INDIAN (Metallic)	66	66			X		X	N/A		N/A				
BRONZE, INDIAN (Metallic)	66	66				X		N/A	X	N/A				
GOLD, NEVADA (Metallic)	67	67			X	X	X	N/A	N/A	N/A	N/A			
GRAY, STEEL (Metallic)	90	90	X					X	N/A					
GRAY, STEEL (Metallic)	90	90		X				N/A	X					
GRAY, STEEL (Metallic)	90	90			X		X		N/A					
RED, APPLE	72	72		X				N/A	X	N/A				
RED, APPLE	72	72			X		X	N/A		N/A				
RED, CINNAMON	71	71			X		X	N/A		N/A	N/A			
RED, CINNAMON	71	71				X		N/A	X	N/A	N/A			
TAN, DOESKIN	61	61			X		X	N/A			N/A			
TAN, DOESKIN	61	61				X		N/A	X		N/A			
WHITE, FROST	12	12	X					X				N/A		
WHITE, FROST	12	12		X						X		N/A		
WHITE, FROST	12	12			X		X					N/A		
WHITE, FROST	12	12				X			X			N/A		
w/ZY6, ZY7 or ZY8 PAINT							Black	Blue, Dark	Gold	Red	Silver	White		
BLACK, MIDNIGHT						X			X					
Gold, Nevada (Metallic)	19	67								X				
Red, Apple	19	72		X	X					X				
Silver (Metallic)	19	17		X	X						X			
White Frost	19	12		X	X							X		
BLUE, GALAXY (Metallic)														
Silver (Metallic)	28	17	X		X						X			
White Frost	28	12	X									X		
BLUE, LIGHT (Metallic)														
Blue, Galaxy (Metallic)	21	28	X					X						
White Frost	21	12	X									X		
BRONZE, INDIAN (Metallic)														
Gold, Nevada (Metallic)	66	67				X		X						
Silver (Metallic)	66	17			X						X			
White Frost	66	12				X						X		
GOLD, NEVADA (Metallic)														
Black, Midnight	67	19			X	X	X							
White Frost	67	12				X						X		
GRAY, STEEL (Metallic)														
Black, Midnight	90	19		X	X		X							
Blue, Galaxy (Metallic)	90	28	X					X						
Red, Apple	90	72	X	X	X				X					
Silver (Metallic)	90	17	X	X	X					X				
White Frost	90	12	X	X	X						X			
RED, APPLE														
Black, Midnight	72	19		X	X		X							
Silver (Metallic)	72	17		X	X						X			
White Frost	72	12		X								X		
RED, CINNAMON														
Black, Midnight	71	19			X		X							
White Frost	71	12				X						X		
TAN, DOESKIN														
Black, Midnight	61	19			X	X								
Gold, Nevada (Metallic)	61	67			X	X		X						
White Frost	61	12			X							X		
WHITE, FROST														
Black, Midnight	12	19		X	X		X							
Blue, Galaxy (Metallic)	12	28	X					X						
Gold, Nevada (Metallic)	12	67			X	X			X					
Red, Apple	12	72		X						X				
Silver (Metallic)	12	17	X	X	X						X			

\*With YC2 Tahoe/Sierra Classic, rear seat trim is Special Custom Cloth, with YC3 Sport/Gypsy rear seat trim is Deluxe Cloth N/A-Not Available

## S-10/15 BLAZER/JIMMY 2- & 4-WHEEL DRIVE

### INTERIOR AND EXTERIOR COLOR AVAILABILITY CHART

#### WITH D98 RALLY STRIPING

Please Note: Below are the interior trim color and exterior paint combinations recommended by Chevrolet/GMC. The only available color code 1/color code 2 exterior color combinations are those shown in the chart below; however, any available interior trim color may be ordered with one of these exterior color combinations if that particular combination is desired by the customer.

INTERIOR COLORS		Decor	Blue	Carmine	Charcoal	Saddle Tan	D98 STRIPING CHART RECOMMENDED COMBINATIONS Stripe color options must be specified on all ZY1 Solid Paint applications. Additional stripe combinations are available except where N/A is shown, provided the dealer orders (D60) as verification.					
STANDARD INTERIOR Custom Vinyl High Back Bucket Seats		Std.	XDD4	XRR4	XJJ4	XSS4						
TAHOE/SIERRA CLASSIC Custom Vinyl High Back Bucket Seats		YC2	XDD4	XRR4	XJJ4	XSS4						
Special Custom Cloth High Back Bucket Seats			HDD4	HRR4	HJJ4	HSS4						
High Country Sheepskin High Back Bucket Seats						BSS4						
EXTERIOR COLORS w/ZY1 PAINT	Color Code 1	Color Code 2	RECOMMENDED INTERIOR TRIM COLORS				STRIPE COLORS					
							Black 19A	Dk. Blue 26A	Gold 67A	Red 72A	Silver 17A	White 12A
BLACK, MIDNIGHT	19	19			X		N/A	N/A			X	
BLACK, MIDNIGHT	19	19				X	N/A	N/A	X			
BLACK, MIDNIGHT	19	19		X			N/A	N/A		X		
BLUE, GALAXY (Metallic)	28	28	X		X		N/A	N/A		N/A	X	
BLUE, GALAXY (Metallic)	28	28				X	N/A	N/A	X	N/A		
BLUE, LIGHT (Metallic)	21	21	X		X			X	N/A	N/A		
BRONZE, INDIAN (Metallic)	66	66			X		N/A	N/A		N/A	X	
BRONZE, INDIAN (Metallic)	66	66				X	N/A	N/A	X	N/A	N/A	
GOLD, NEVADA (Metallic)	67	67			X	X	X	N/A	N/A	N/A	N/A	
GRAY, STEEL (Metallic)	90	90			X			X	N/A			
GRAY, STEEL (Metallic)	90	90	X					X	N/A			
GRAY, STEEL (Metallic)	90	90		X					N/A	X		
RED, APPLE	72	72			X		X	N/A		N/A		
RED, APPLE	72	72		X				N/A		N/A	X	
RED, CINNAMON	71	71			X		X	N/A		N/A		
RED, CINNAMON	71	71				X		N/A	X	N/A	N/A	
TAN, DOESKIN	61	61			X		X	N/A		N/A	N/A	
TAN, DOESKIN	61	61				X		N/A	X	N/A	N/A	
WHITE, FROST	12	12			X		X					N/A
WHITE, FROST	12	12	X					X				N/A
WHITE, FROST	12	12				X			X			N/A
WHITE, FROST	12	12		X						X		N/A

N/A-Not Available

## S-10/15 BLAZER/JIMMY 2- & 4-WHEEL DRIVE STRIPING CHART FOR ZY6 CUSTOM TWO-TONE

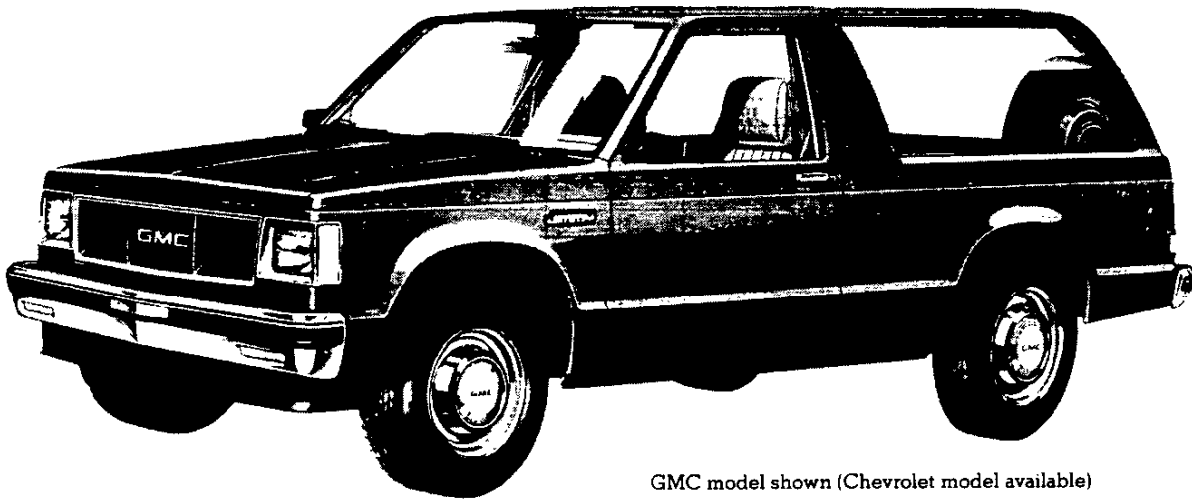
INTERIOR TRIM COLOR			BLUE	CARMINE	CHARCOAL	SADDLE TAN
EXTERIOR PAINT COLOR	Color Code 1	Color Code 2	STRIPE COLORS			
BLACK, MIDNIGHT/Gold, Nevada (Met)	10	67	*Orange/Yellow	*Orange/Yellow	*Orange/Yellow	Orange/Yellow
BLACK, MIDNIGHT/Red, Apple	19	72	*Silver	Silver	Silver	*Silver
BLACK, MIDNIGHT/Silver (Met)	19	17	Blue	Blue	Blue	*Red
BLACK, MIDNIGHT/White, Frost	19	12	*Blue	Red	Red	*Orange/Yellow
BLUE, GALAXY (MET)/Silver (Met)	28	17	Blue	*Red	Blue	*Blue
BLUE, GALAXY (MET)/White, Frost	28	12	Blue	*Red	*Blue	*Gold
BLUE, LIGHT (MET)/Blue, Galaxy (Met)	21	28	Blue	*Silver	*Silver	*Blue
BLUE, LIGHT (MET)/White, Frost	21	12	Blue	*Red	*Blue	*Blue
BRONZE, INDIAN (MET)/Gold, Nevada (Met)	66	67	*Orange/Yellow	*Orange/Yellow	*Orange/Yellow	Orange/Yellow
BRONZE, INDIAN (MET)/Silver (Met)	66	17	*Orange/Yellow	*Orange/Yellow	Orange/Yellow	*Orange/Yellow
BRONZE, INDIAN (MET)/White, Frost	66	12	*Silver	*Gold	*Orange/Yellow	Gold
GOLD, NEVADA (MET)/Black, Midnight	67	19	*Gold	*Gold	*Orange/Yellow	Gold
GOLD, NEVADA (MET)/White, Frost	67	12	*Gold	*Gold	*Gold	Gold
GRAY, STEEL (MET)/Black, Midnight	90	19	*Blue	Red	Red	*Silver
GRAY, STEEL (MET)/Blue, Galaxy (Met)	90	28	Blue	*Silver	*Silver	*Silver
GRAY, STEEL (MET)/Red, Apple	90	72	*Silver	*Silver	Silver	*Silver
GRAY, STEEL (MET)/Silver (Met)	90	17	Blue	Red	Red	*Red
GRAY, STEEL (MET)/White, Frost	90	12	Blue	Red	Red	*Red
RED, APPLE/Black, Midnight	72	19	*Silver	Red	Silver	*Red
RED, APPLE/Silver (Met)	72	17	*Red	Red	Red	*Red
RED, APPLE/White, Frost	72	12	*Silver	Silver	*Silver	*Gold
RED, CINNAMON/Black, Midnight	71	19	*Silver	*Red	Silver	*Red
RED, CINNAMON/White, Frost	71	12	*Silver	*Red	Red	*Gold
TAN, DOESKIN/Black, Midnight	61	19	*Gold	*Red	*Gold	Gold
TAN, DOESKIN/Gold, Nevada (Met)	61	67	*Gold	*Orange/Yellow	*Orange/Yellow	Orange/Yellow
TAN, DOESKIN/White, Frost	61	12	*Gold	*Red	*Orange/Yellow	Gold
WHITE, FROST/Black, Midnight	12	19	Blue	Red	Red	*Red
WHITE, FROST/Blue, Galaxy (Met)	12	28	Blue	*Blue	*Blue	*Blue
WHITE, FROST/Gold, Nevada (Met)	12	67	*Orange/Yellow	Orange/Yellow	Orange/Yellow	Orange/Yellow
WHITE, FROST/Red, Apple	12	72	*Silver	Silver	*Silver	*Gold
WHITE, FROST/Silver (Met)	12	17	Blue	Red	Red	*Red

\*Stripe color/trim color combination available but not recommended.

## S-10/15 BLAZER/JIMMY 2- & 4-WHEEL DRIVE

### SOLID AND TWO-TONE\* EXTERIOR COLOR COMBINATIONS

The application of paint for solid and two-tone exterior color combinations is shown below.

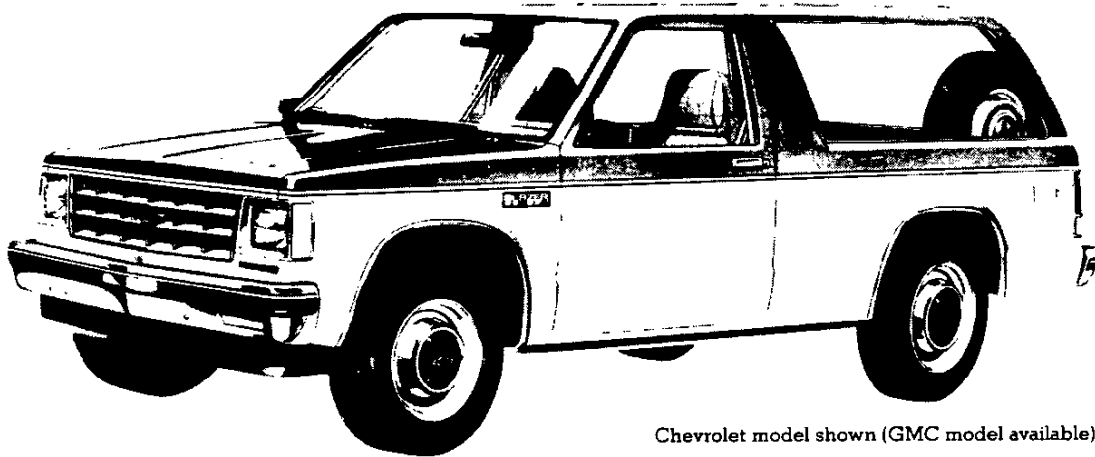


GMC model shown (Chevrolet model available)

#### **SOLID COLOR**

**Solid paint (ZY1)** is standard on all models (except Sport/Gypsy). All painted areas of the body and front end sheet metal are the same color. Tailgate lettering for base models is

silver when Galaxy Blue, Indian Bronze, Midnight Black, or Apple Red exterior colors are specified and black for all other exterior colors.



Chevrolet model shown (GMC model available)

#### **CUSTOM TWO-TONE**

**Custom two-tone paint (ZY6)** is available on all models. The areas above the belt styling crease line are painted the color code 1 paint color. The areas below that line are painted the color code 2 color. A color-keyed decal stripe is applied at the belt styling crease line just below the paint

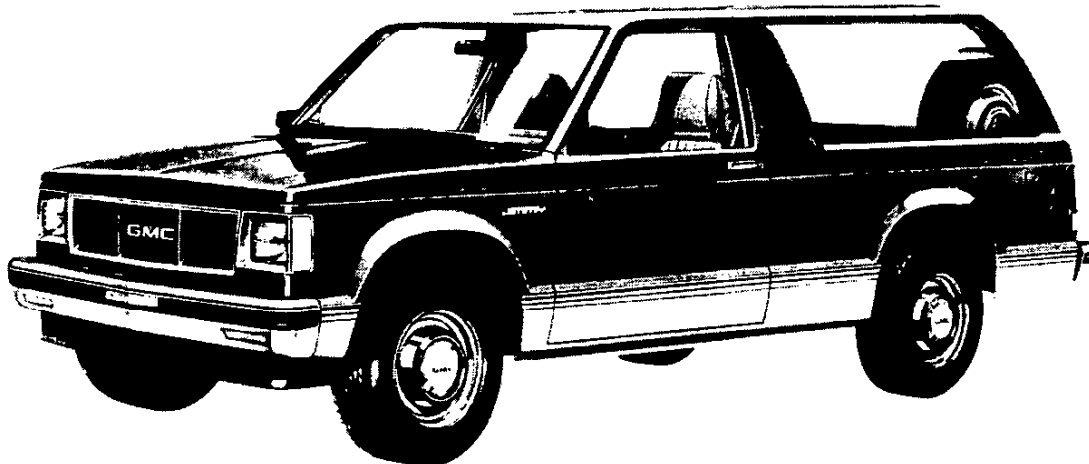
break (See color stripe chart on page I). Tailgate lettering for base models is silver when Galaxy Blue, Indian Bronze, Midnight Black, or Apple Red color code 2 exterior colors are specified and black for all other colors.

\*Optional at extra cost

## S-10/15 BLAZER/JIMMY 2- & 4-WHEEL DRIVE

### SOLID AND TWO-TONE\* EXTERIOR COLOR COMBINATIONS

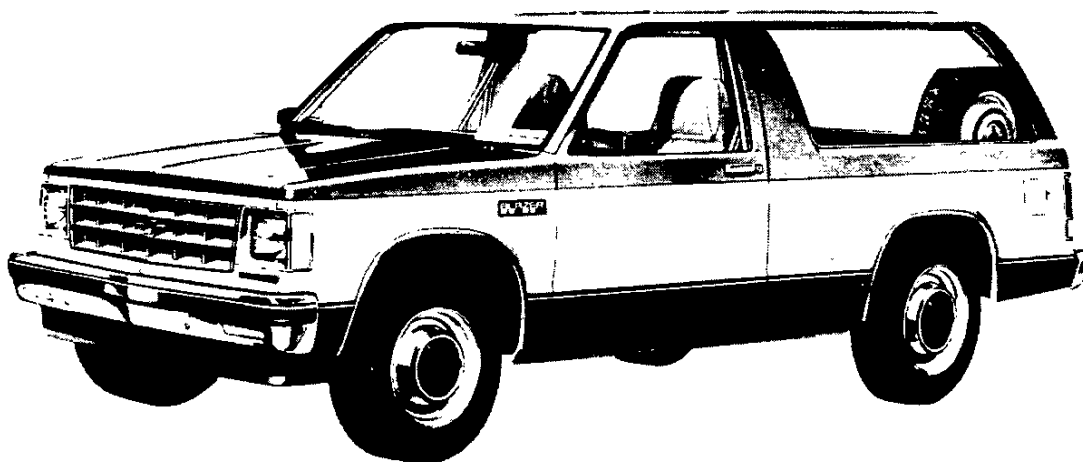
The application of paint for solid and two-tone exterior color combinations is shown below.



#### **SPORT TWO-TONE**

**Sport two-tone paint (ZY7)**, which provides a lower accent two-tone scheme, is available on base and Tahoe/Sierra Classic models, and is included when the Sport/Gypsy Model Option (YC3) is ordered. A wide, four stripe decal is included on base models, and is applied below the lower styling crease lines. The decal color matches the color code 2 paint choice, and is applied over the paint break line in such a way that the color code 1 color paint shows through the clear areas to contrast with the decal colors. The

color code 1 color choice is applied to the areas above the bottom stripe of the decal, and the color code 2 color is applied to the areas below the decal. RPO B84 Body Side Moldings may be ordered with ZY7 on base models, if desired (at extra cost), and will replace the striping decal. Tailgate lettering for base models is silver when Galaxy Blue, Indian Bronze, Midnight Black, or Apple Red exterior colors are specified and black for all other exterior colors.



#### **SPECIAL TWO-TONE**

**Special two-tone paint (ZY8)**, which provides a mid-accent two-tone scheme, is available on base and Tahoe/Sierra Classic models and includes B84 body side and wheel opening moldings (except on Tahoe/Sierra Classic models where already included) which are applied below the lower styling crease lines. The areas below the molding and above

the belt styling crease line are painted the color code 1 paint color. The areas between the molding and the belt styling crease line are painted the color code 2 color. Tailgate lettering for base models is silver when Galaxy Blue, Indian Bronze, Midnight Black, or Apple Red color code 2 exterior colors are specified and black for all other colors.

\*Optional at extra cost

## S-10/15 BLAZER/JIMMY 2- & 4-WHEEL DRIVE

### SOLID AND TWO-TONE\* EXTERIOR COLOR COMBINATIONS

The application of paint for solid and two-tone exterior color combinations is shown below.



Chevrolet model shown (GMC model available)

#### **RALLY STRIPING**

**RPO D98 Rally Striping** is available in six colors and is available on S-10/15 Blazer/Jimmy models only when ZY1 Solid Paint is ordered. A decal stripe color must be selected from the D98 color selection chart on page H. The 6 stripe decal is applied just above the belt styling crease line

on the front fenders, door and body sides. The stripes vary in width from about  $\frac{1}{2}$ " at the bottom to  $\frac{1}{4}$ " at the top; with an overall width of about 3." Clear areas between the stripes allow the exterior paint color to show through.

\*Optional at extra cost