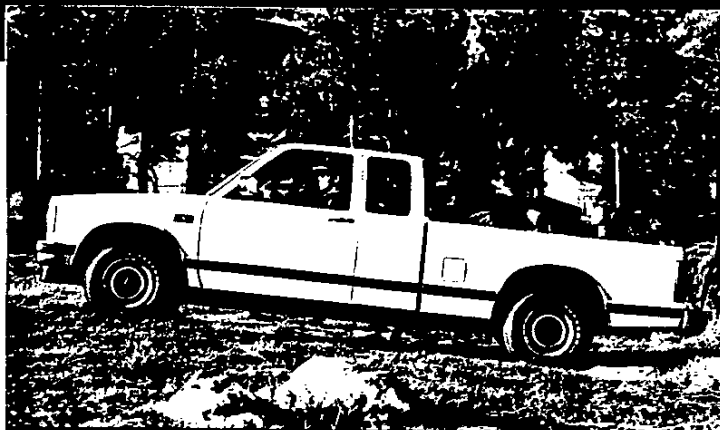




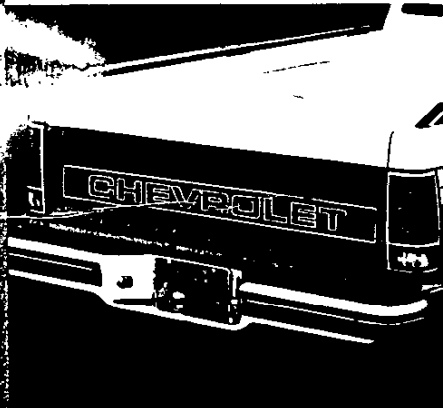
S-10 PICKUPS



S-10 PICKUPS

EXTERIOR

- One new color is available, Emerald Metallic (code 44). Ten colors are carried over.



BODY

- New tailgate applique is included with YC2 and YC3 trim levels. It is black with reflective silver letters.
- Color-keyed vinyl floor mats, RPO BG9, currently included in the YC1 trim level are now available when up-level trims YC2 or YC3 are ordered.
- High Country Sheepskin bucket seats have been discontinued.

CHASSIS AND POWERTRAIN

- The standard 2.5 Liter EFI gas engine incorporates further improvements which include high-flow ports in the cylinder head and a redesigned intake manifold plus:
 - A single accessory belt drive, also called serpentine drive, replaces the conventional multiple V-belts. Benefits are:
 - Automatic belt tensioning
 - Spring-loaded tensioner
 - Less complex system
 - 100,000-mile life expectancy

- A new 85-amp Delcotron generator replaces the 78-amp unit as standard equipment. The new unit is lighter and benefits include improved performance, added durability and improved serviceability.
- New Delco Freedom batteries feature a "flat top" case. This new battery provides an increase in cold cranking amps from 405 to 525 and the optional heavy-duty battery from 540 to 630 cold cranking amps.

S-10 PICKUPS



OPTIONS

Optional decal package consisting of six tape stripes in any of six different colors extending generally along the beltline. Available with solid paint or Sport Two-Tone.

Optional instrument cluster incorporates gages as well as full-tail lights.

Optional steering wheel of molded urethane with simulated stitching. The horn button includes the division logo and bright trim. Available in black only.

Custom Two-Tone paint. Provides secondary paint placement from the upper body belt styling line to the bottom of the truck, including the hood and tailgate.

"Sunshine" striping decal package, for regular-cab and extended-cab pickups available with solid paint or Custom Two-Tone.

Styled wheels for 2WD pickup features attractive paint scheme.

The Sport trim includes black chrome finish on grille and headlamp bezels, black finish tail-lamp bezels, black key cylinder locks and door handles.

Custom Vinyl and Custom Cloth seat trim fabrics.

Side door trim panels include Custom Cloth fabric on regular-cab models with Tahoe trim.

The intermittent windshield wiper system control is included in Smart Switch on the steering column.

Usage of all-season tread design includes many optional tires on 4x4 models.

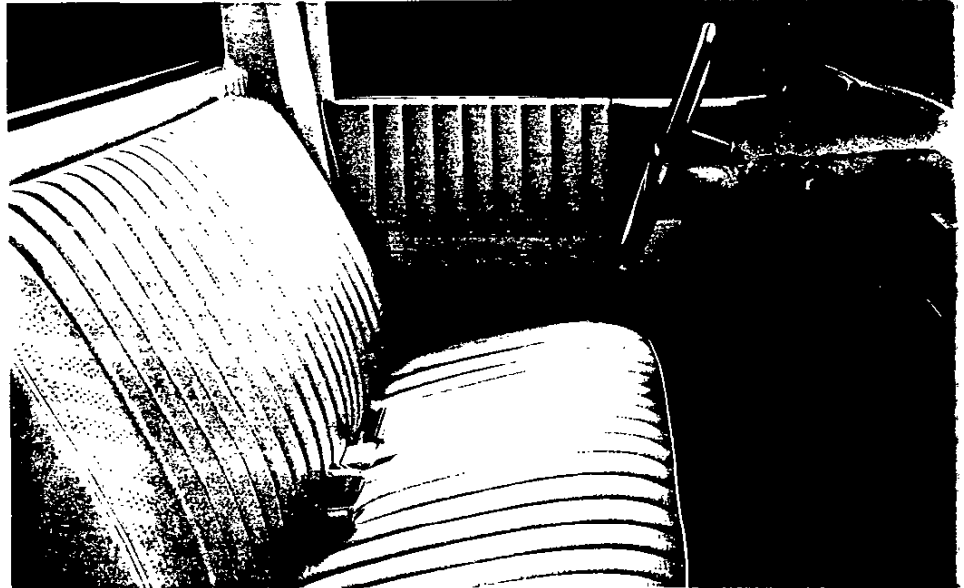
Precleaner air cleaner is available for use with the 2.8 Liter V6 engine only.

Four-speed automatic transmission with overdrive is available with the 2.5 Liter L4 gas engine on all 4x4 models.

REGULAR CAB STANDARD VALUE FEATURES

ALL THIS AT NO EXTRA COST:

- Available in 2WD and 4WD models.
- A 2.5 Liter Electronic Fuel Injection (EFI) engine for impressive performance.
- Fuel tank is mounted inside the left-hand frame rail for protection from side impact.
- Upshift light on instrument panel to indicate best time to shift the manual transmission for best fuel economy.
- Hydraulic self-adjusting clutch on all manual transmissions for smooth, easy operation.
- Hemmed tailgate eliminates sharp, exposed edges and helps resist corrosion.
- Door hinges welded to door frames for control of gap tolerance.
- Ribbed pickup box floor for strength.
- Welded pickup box for improved rigidity.
- All-season steel-belted radial tires for good traction and tread life.
- Double-wall construction uses both an inner and outer wall in the hood, doors, front fenders, cargo box side panels and tailgate. This provides strength. Dents on the inside don't show outside.
- Self-adjusting front disc brakes have audible wear sensors as an early warning of brake wear.
- Rear brake adjusters eliminate periodic brake adjustments.
- Standard 13.2-gallon fuel tank. Optional 20-gallon tank



available.

- Crankdown-type spare tire carrier for easy access under frame.
- Rear side marker lamps integral with tail lamps.
- Right- and left-hand mirrors with low-gloss black finish.
- Low-gloss black windshield and rear window moldings.
- Concealed drip molding helps keep the elements outside of the cab and provides a clean, uncluttered appearance.
- Wheels feature a five-lug, star-type bolt pattern.
- Fluidic windshield washer provides good spray pattern and cleaning.
- Bench seat with three seat belts.
- Folding, inertia-latch seat backrest permits easy access to space behind the seat.
- Seat-back angled 23° for chair-like comfort.
- Angled rear window reflects the glare of on-coming lights away from the inside rearview mirror.

- Curved track seat adjuster moves a full 6.6" to accommodate short or tall drivers.
- Full door trim panels and headliner for good appearance and acoustics.
- Ashtray, coat hook and inside day/night mirror for convenience.
- Inside hood release provides theft protection for the engine compartment.
- Column-mounted Smart Switch controls turn signals, headlight beam and wiper/washer for driver's convenience.
- Color-keyed instrument panel.
- Left and right sunshades with sliding feature for more convenience.
- Sliding door lock levers help deter theft.
- Locking stowage box in instrument panel.
- Fuse block for easy serviceability.
- Extensive corrosion protection.

MAXI-CAB STANDARD VALUE FEATURES



ALL THIS AT NO EXTRA COST:

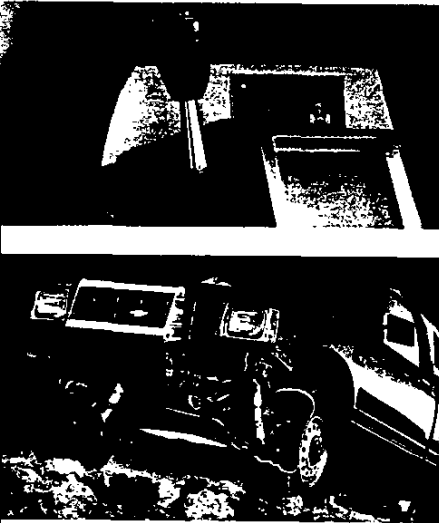
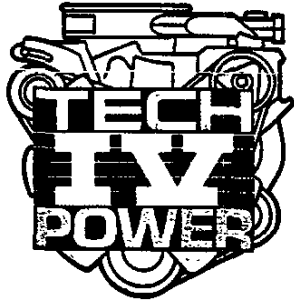
Like the regular cab, the S-10 Maxi-Cab offers many standard value features:

- Available in 2WD and 4WD models.
- 14.6" longer cab provides lots of extra room behind front seats.
- Extra-long 122.9" wheel-base to carry the larger cab and enhance the ride.
- Room for two additional passengers or protected cargo.
- Available (at extra cost) fold-up facing jump seats with Custom Vinyl seat trim.

- Tinted glass all windows standard.
- Dome lamp standard.
- Front bucket seats standard on Tahoe and Sport models.
- Reclining front seat-back available with bucket seats.
- To reduce opportunities for corrosion and provide strength, the cab is constructed with one-piece quarter panels, one-piece roof panel and an inner and outer cab back panel.
- Bonded rear quarter glass.
- Full headliner with full-foam and cloth covering.



ENGINE AND CHASSIS VALUE FEATURES



The 2.5 Liter L4 gas engine incorporates the latest in high technology which includes a computer-controlled Electronic Fuel Injection (EFI) system:

- It's simpler. It takes the complexity out of the engine compartment and places it in the Electronic Control Module (ECM).
- It's more responsive, especially during cold starts and warm-ups.

- It offers outstanding fuel economy.
- The simpler EFI system has proved to be easier to service. It eliminates the carburetor, choke, needle valve and float.

Other high-technology features include:

- Lightweight castings: head, block and crankshaft.
- Lighter weight pistons for lower reciprocating forces, cooler operation.
- Aluminum intake manifold reduces weight.
- Fabricated stainless steel exhaust manifold.
- Roller hydraulic valve lifters reduce friction.
- Low-tension oil rings reduce friction.
- High torque improves low engine speed operation.
- Centralized, compound angle spark plug.
- 8.9 to 1 compression ratio.
- Serpentine accessory belt drive for 100,000-mile life expectancy.
- 2.8 Liter V6 engine, available on S-10 2WD and 4WD models, has EFI for more precise fuel-to-air ratio, improved performance and driveability.

FRAME ASSEMBLIES (2WD and 4WD)

- Full-frame construction.
- All-welded, except for riveted rear cross members.
- Hot-wax-coated for corrosion protection.
- Box-section front frame with channel-type rear side rails for strength.

2WD FRONT SUSPENSION

- Computer-selected front springs match the vehicle's weight.
- Sport suspension package available.
- Independent front suspension with coil springs to help provide an impressively smooth ride.
- Control arms are rubber bushed for noise and shock damping.
- Ball joints equipped with visible wear indicators.
- Features long wheel travel to help absorb road bumps and jolts.
- Stabilizer bar is available and included with 1,500- and 1,625-lb. payload options.

4WD FRONT SUSPENSION AND CHASSIS

- Independent front suspension with torsion bars.
- Standard stabilizer bar.
- Good ground clearance, step height and overall height.
- Insta-Trac 4-wheel-drive system features no-stop shifting from 2HI to 4HI and back.
- Vacuum diaphragm actuates front-axle center disconnect for freewheeling. Automatically engages or disengages by moving transfer case shift lever.

TRAILERING

With the available V6 engine and Heavy-Duty Trailering Package, a 2WD S-10 tows up to 5,000 lbs. (4,000 lbs. for 4WD) including trailer and cargo.

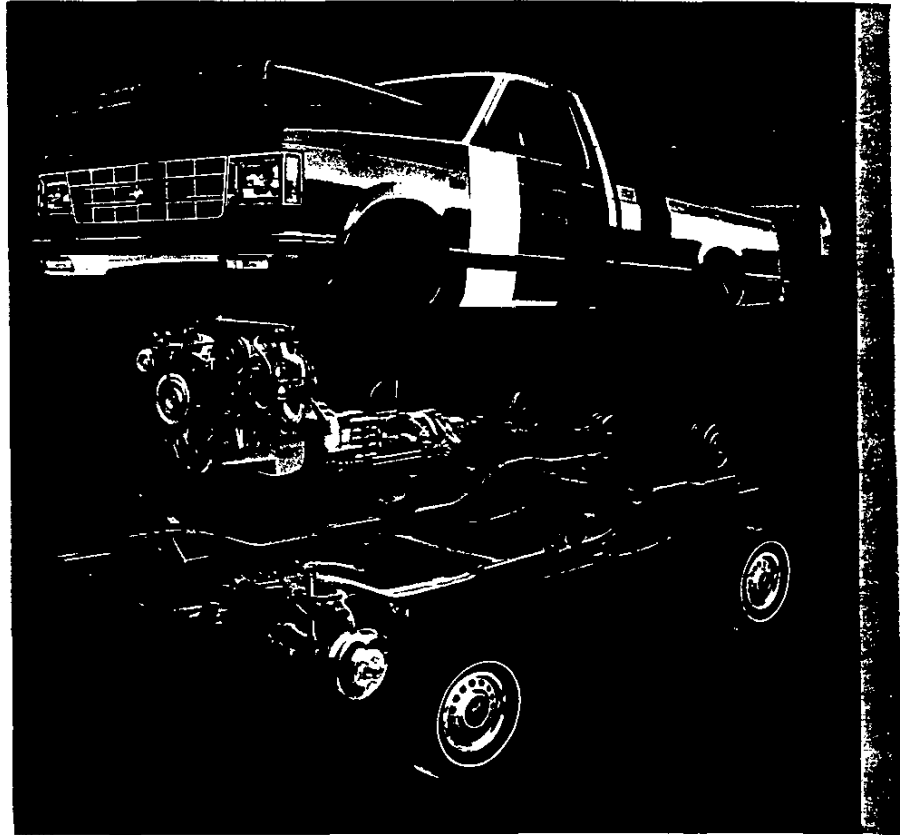
ANTI-CORROSION VALUE FEATURES

IMPRESSIVE CORROSION PROTECTION

- Zincrometal,* galvanized steel, zinc-alloy coated steel and zinc-plated parts used in important areas, such as the cargo box.
- Two-sided galvanized steel is used for the cab floor, door frames, pickup-box floor and side panels and wheel housings.
- Zincrometal is used in the inner front fenders, outer hood, outer front fenders, doors, pickup-box outer side panels and tailgate.
- Cathodic ELPO primer used on entire cab, cargo box and front end.
- Stone-resistant coating sprayed on lower body side panels.
- Aluminized wax preservative sprayed on inner door body surfaces to resist corrosion from road salt.

LONG-LASTING FINISH

- Zinc-rich anti-corrosion primer sprayed on before final priming.
- Primer surfacer added for further sealing and prefinishing.
- High-solid solvent enamel top coat is baked on. Has roughly 50% higher ratio of solids to solvent than current enamel systems in U.S. auto/truck industry.
- High-quality paint finish.
- Up to 5-layer-deep finish. That's 25% thicker than the typical U.S. truck.
- Factory paint systems were specially redesigned to meet design goals for the S-10 models.



HIGH-QUALITY ASSEMBLY PROCESS

- Assembly process features the extensive use of solid-state automatic welding machines.
- Features "net build" quality. Front end, cab and cargo box are first welded into separate units, then joined. If these and other assemblies don't fit, they are not adjusted to fit, they are rejected.
- Many sheet metal components are restamped for precision.
- Advanced electronic quality control. Critical dimensions are electronically checked throughout the entire assembly process.
- Door hinges are welded to the door frame in a master control fixture for precision.
- Every S-10 model is water-tested for leaks.
- Computer graphics used to design all electrical, air and hydraulic circuits for efficient, accurate engineering.
- Designed, engineered and assembled in America.

DURANGO/TAHOE/SPORT TRIM OPTIONS

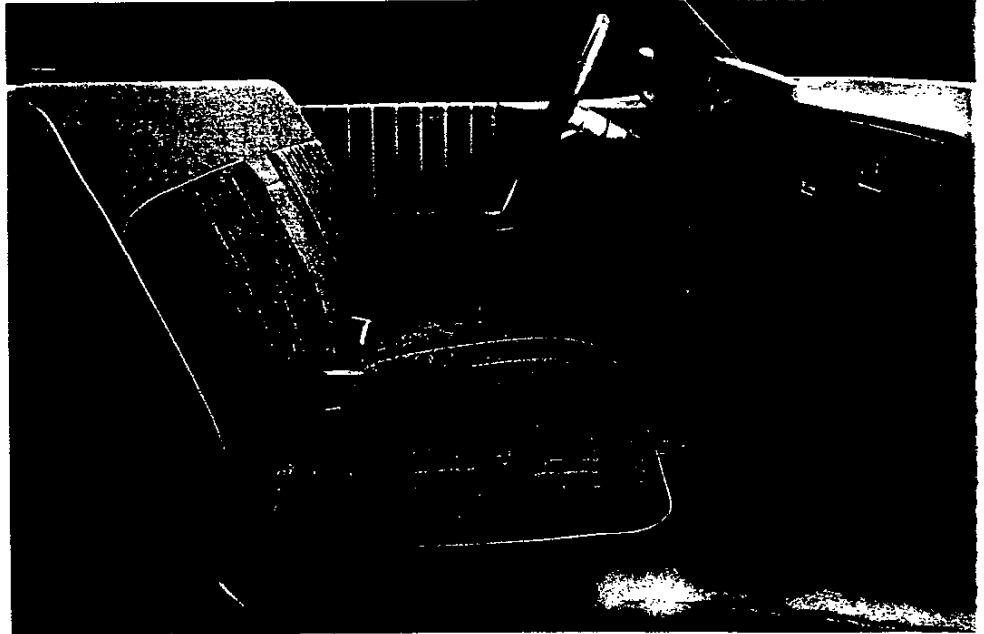
The Durango option is available in Custom Vinyl or Custom Cloth bench seats, Custom Vinyl high-back bucket seats, and Special Custom Cloth high-back bucket seats (Maxi-Cab only).

The Tahoe option is available in Custom Vinyl high-back bucket seats or Special Cloth high-back bucket seats for all models.

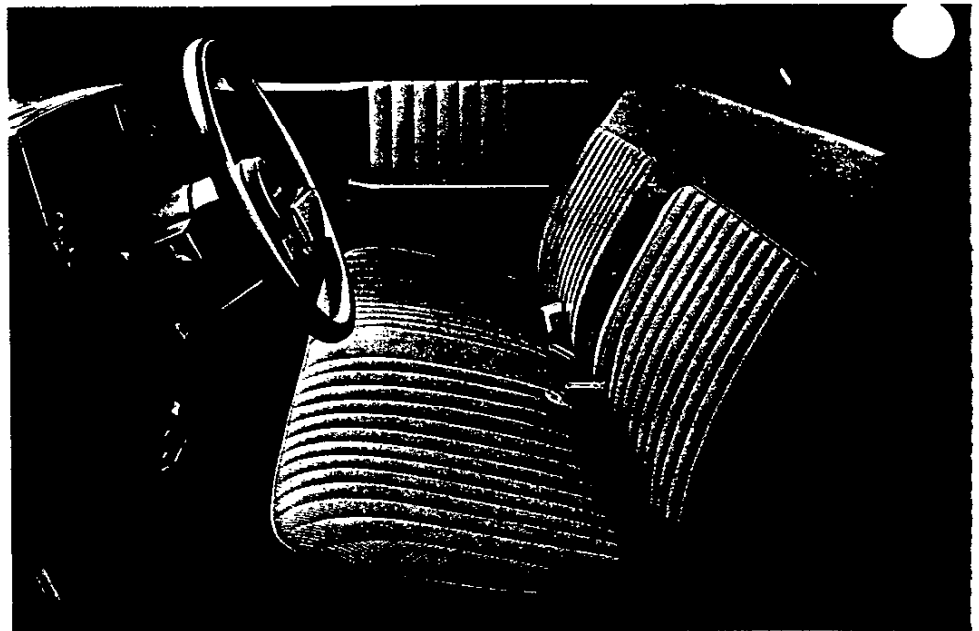
Custom Vinyl and Custom Cloth bench seats are available for the regular cab only.

The Sport option is available in new Sport Cloth high-back bucket seats. See pages D, E and F for complete details on other trim features of the Durango, Tahoe and Sport options.

New for '87 Maxi-Cab models are available Leather High-Back Reclining Front Bucket Seats. Requires Tahoe RPO YC2 or Sport RPO YC3 equipment. Available in Charcoal or Saddle Tan colors.



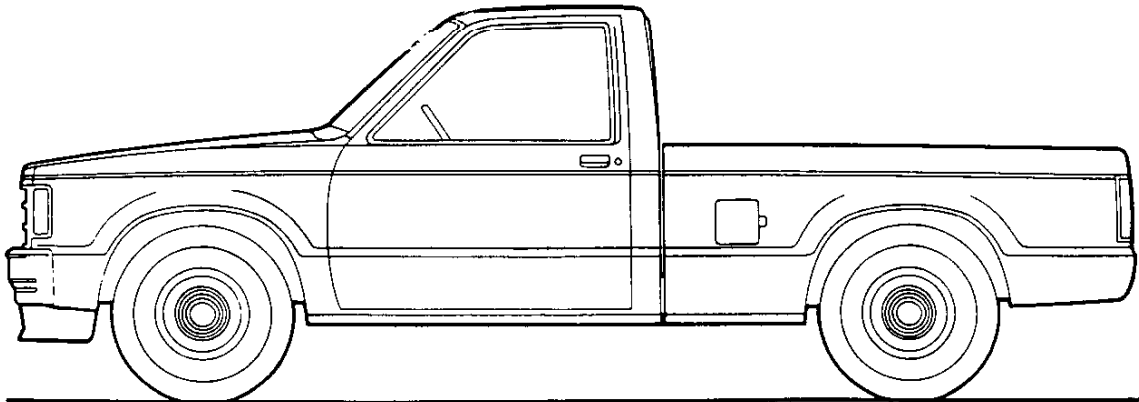
Durango trim



Tahoe trim

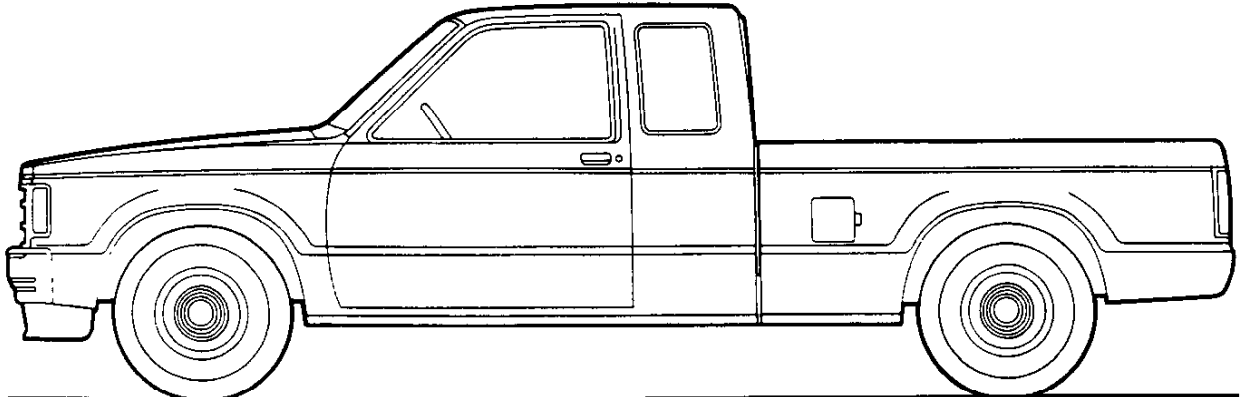
S-10/15 PICKUP 2- & 4-WHEEL DRIVE

MODEL SELECTOR



REGULAR CAB

SERIES	MODEL NUMBER		BODY ORDERING CODE	
	6' BOX	7'5" BOX	STANDARD	EL/SPECIAL
S-10/15 (4x2)	S10603	—	E63/X96	E63/X81
S-10/15 (4x2)	—	S10803	E63	—
S-10/15 (4x4)	T10603	T10803	E63	—



EXTENDED CAB

SERIES	MODEL NUMBER	BODY ORDERING CODE
	6' BOX	
S-10/15 (4x2)	S10653	E63
S-10/15 (4x4)	T10653	E63

S-10/15 PICKUP—2-WHEEL DRIVE

REGULAR CAB AND EXTENDED CAB STANDARD SPECIFICATIONS

(See Gray Tab Section for Specification Details)

Series	S-10/15 4X2 EL/SPECIAL	S-10/15 4X2
Engine		
Base Equip.	2.5 Liter (151 Cu. In.) EFI L4	
Clutch	9.13" 71.86 sq. in.	
Air Filter	Oiled-paper Element	
Oil Filter	Throwaway Type	
Exhaust System	Single; Aluminized	
Emission Control Systems	Meet Government Requirements	
Suspension, Front		
Type	Independent	
Axle Capacity	Coil Springs	
Springs @ Ground	2500 lb.	
Shock Absorbers	1250 lb. ea.	
	25mm dia.	
Suspension, Rear		
Type	Salisbury Axle; Hypoid Drive; Two-stage Multi-leaf Springs	
Axle Capacity	Leaf Springs	
Axle Ratio	2600 lb.	
Springs @ Ground	3.42	
Shock Absorbers	1150 lb. ea.	
	25mm dia.	
Brakes		
Front	Hydraulic; Self-adjusting	
Rear	Disc; 10.51" Rotor	
Booster (Extended Cab only)	Drum; 9.49" x 2"	
Parking	Single Diaphragm	
	Cable to Rear Wheels	
Electrical		
Battery—Freedom Type	12 Volt; Negative Ground	
—Reserve Capacity	525 CCA ♦ @ 0°F.	
Delcotron Generator	90 min. @ 80°F.	
	85 amp.	
Frame		
Section Modulus—108.3" WB	Carbon Steel; 36,39,000 psi	
—117.9" 122.9" WB	1.94	
	2.19	
Fuel Tank (nominal capacity)	13.2 gal.	
Steering Gear Type	Manual; Recirculating Ball Gear	
Linkage	Parallelogram	
Transmission	Fully Synchronized 4-Speed Manual	
Shift Location	Floor	
Tires—All-Season Steel Belted Radial		
Spare	(4) P195/75R14	(4) P195/75R14
	(1) T135/80D15	(1) P195/75R14
Wheels		
Spare	(4) Disc, 14" x 6"	(4) Disc, 14" x 6"
	(1) Disc, 15" x 4"	(1) Disc, 14" x 6"

♦CCA-Cold Cranking Amps

S-10/15 PICKUP—4-WHEEL DRIVE

REGULAR CAB AND EXTENDED CAB

STANDARD SPECIFICATIONS

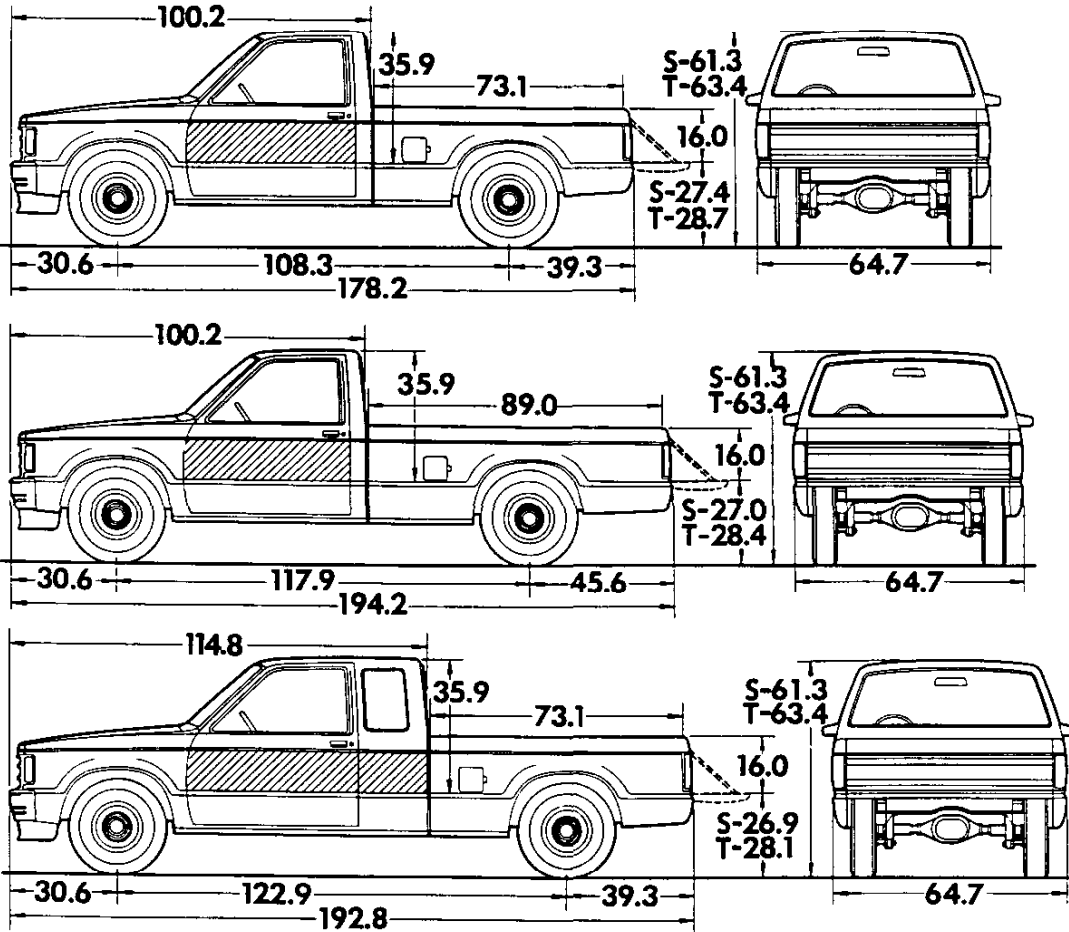
(See Gray Tab Section for Specification Details)

Series	S-10/15 4X4
Engine	
Base Equip.	2.5 Liter (151 Cu. In.) EFI L4
Clutch	9.13", 71.86 sq. in.
Air Filter	Oiled-paper Element
Oil Filter	Throwaway Type
Exhaust System	Single; Aluminized
Emission Control Systems	Meet Government Requirements
Suspension, Front	Independent Driving Axle
Type	Torsion Bar
Axle Capacity	2700 lb.
Axle Ratio	3.73
Springs @ Ground	1350 lb. ea.
Shock Absorbers	25mm dia.
Stabilizer Bar	32mm dia.
Suspension, Rear	Salisbury Axle; Hypoid Drive; Two-stage Multi-leaf Springs
Type	Leaf Springs
Axle Capacity	2700 lb.
Axle Ratio	3.73
Springs @ Ground	1150 lb. ea.
Shock Absorbers	25mm dia.
Brakes	Hydraulic; Self-adjusting
Front	Disc; 10.51" Rotor
Rear	Drum; 9.49" x 2"
Booster	Single Diaphragm
Parking	Cable to Rear Wheels
Electrical	12 Volt; Negative Ground
Battery—Freedom Type	525 CCA ♦ @ 0°F.
—Reserve Capacity	90 min. @ 80°F.
Delcotron Generator	85 amp.
Frame	Carbon Steel; 36,39,000 psi
Section Modulus—108.3" WB	2.56
—117.9" & 122.9" WB	2.91
Fuel Tank (nominal capacity)	13.2 gal.
Steering Gear Type	Manual; Recirculating Ball Gear
Linkage	Parallelogram
Transmission	Fully Synchronized 4-Speed Manual
Shift Location	Floor
Transfer Case	New Process 207 2-Speed Conventional
Shift Location	Floor
Tires	(5) P195/75R15 All Seasons Steel Belted Radial
Wheels	(5) Disc, 15" x 6"

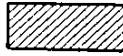
♦ CCA-Cold Cranking Amps

S-10/15 PICKUP 2- & 4-WHEEL DRIVE

Body Ordering Code: E63



Sign Panel Areas (side)
 Regular Cab - 12 1/4" x 45"
 Extended Cab - 12 1/4" x 64"



Maxi-Cab Cargo Capacity (Cu. Ft.)
 w/o Jump Seats 18.4
 w/Jump Seats (folded) 13.7

Cab to Axle (CA)
 108.3" WB - 38.7"
 117.9" WB - 48.3"
 122.9" WB - 38.7"

Model	Body Ordering Code	Engine No. Cyl.	Curb Weight (lb)			Model Weights (lb)*			Ground Clearance (in)* Minimum
			Front	Rear	Total	Front	Rear	Total	
S-10/15 MODELS (2-WHEEL DRIVE)									
S10603/X81	E63	4	1506	1061	2567	1731	1286	3017	6.4
S10603/X96	E63	4	1512	1067	2579	1737	1292	3029	6.4
S10803	E63	4	1539	1118	2657	1783	1324	3107	6.4
S10653	E63	4	1590	1131	2721	1845	1326	3171	6.4
S-10/15 MODELS (4-WHEEL DRIVE)									
T10603	E63	4	1766	1146	2912	1991	1371	3362	6.9
T10803	E63	4	1787	1175	2962	2031	1381	3412	6.9
T10653	E63	4	1838	1198	3036	2093	1393	3486	6.9

* Dimensions with standard equipment, unloaded.

*Model Weights include curb weight plus occupants (standard seating capacity x 150 lbs.). Total Weight may vary as much as ± 50 lbs. to allow for production build variation.

S-10/15 PICKUP 2- & 4-WHEEL DRIVE

PAYLOAD SELECTORS

‡Maximum Ratings				Minimum Equipment Required for GVW Rating		
Payload (lb)	GVW Range (lb)	†GAWR (lb)		Tires, Front	Tires, Rear	Chassis Equipment
		Front	Rear			
S-10/15 MODELS (2 WHEEL DRIVE)						
1000	3570 to 4369	2500	2300	P195/75R14	P195/75R14	Standard
1500	4106 to 4920	2500	2544	P195/75R14	P195/75R14	▲1500-lb. Payload Package (C3A)
◆1625	4241 to 4959	2500	2600	P205/75R14	P205/75R14	▲1625-lb. Payload Package (C3C)
S-10/15 MODELS (4 WHEEL DRIVE)						
1000	3899 to 4726	2684	2300	P195/75R15	P195/75R15	Standard
1500	4408 to 5284	2684	2684	P195/75R15	P195/75R15	▲1500-lb. Payload Package (C3A)

‡GAWRs shown are the maximum for each axle with the equipment listed. Maximum ratings include an additional 50 lbs. allowance for vehicle weight variance.

†GAWR—Gross Axle Weight Rating.

▲See payload option restrictions for engine requirements.

◆Not available on S10653 Extended Cab models.

NOTES

S-10/15 PICKUP 2- & 4-WHEEL DRIVE

POWER TEAMS

ALL STATES EXCEPT CALIFORNIA

#PAYLOADS:
C3B: 1000 lbs.
C3A: 1500 lbs.
C3C: 1625 lbs.

POWER TEAMS (MUST ORDER ENGINE, TRANSMISSION AND REAR AXLE)

W/NA5 STANDARD EMISSION EQUIPMENT

ENGINE	TRANSMISSION			AXLES				PAYLOAD
	4-SP	5-SP	AUTO	3.08	3.42	3.73	4.11	
—S10603-S10803								
LN8 L4 2.5 Liter EFI	MM4			—	GQ1	GT4	—	w/C3A-C3B
	MM4			—	—	GQ1	—	w/C3C
		MM5		—	—	GQ1	*H04	w/C3A-C3B
		MM5		—	—	—	*GQ1	w/C3C
			MX0	—	—	GQ1	H04	w/C3A-C3B
		MX0	—	—	—	GQ1	w/C3C	
LL2 V6 2.8 Liter EFI	MM4			GQ1	GU6	—	—	ALL
		MM5		—	GQ1	GT4	—	w/C3A-C3B
		MM5		—	GQ1	GT4	—	w/C3C
			MX0	—	GQ1	GT4	—	ALL
—S10653								
LN8 L4 2.5 Liter EFI	MM4			—	GQ1	GT4	—	w/C3A-C3B
		MM5	MX0	—	—	GQ1	H04	w/C3A-C3B
LL2 V6 2.8 Liter EFI	MM4			GQ1	GU6	—	—	w/C3A-C3B
		MM5	MX0	—	GQ1	GT4	—	w/C3A-C3B
—T10603-T10803-T10653								
LN8 L4 2.5 Liter EFI	MM4			—	—	#GQ1	**H04	w/C3A-C3B
		MM5	MX0	—	—	—	GQ1	w/C3A-C3B
LL2 V6 2.8 Liter EFI (Reqs N40 Steering)	MM4			—	#GQ1	GT4	—	w/C3A-C3B
		MM5	MX0	—	—	#GQ1	H04	w/C3A-C3B
W/NA6 HIGH ALTITUDE EMISSION EQUIPMENT								
ENGINE	TRANSMISSION			AXLE		PAYLOAD		
	4-SP	5-SP	AUTO	3.73	4.11			
—S10603-S10803								
LN8 L4 2.5 Liter EFI	MM4				GQ1	—		ALL
		MM5			—	*GQ1		ALL
			MX0			—	GQ1	
LL2 V6 2.8 Liter EFI	MM4				GQ1	—		ALL
		MM5			—	*GQ1		ALL
—S10653								
LN8 L4 2.5 Liter EFI	MM4				GQ1	—		w/C3A-C3B
		MM5	MX0		—	GQ1		w/C3A-C3B
LL2 V6 2.8 Liter EFI	MM4				GQ1	—		w/C3A-C3B
		MM5			—	GQ1		w/C3A-C3B
—T10603-T10803-T10653								
LN8 L4 2.5 Liter EFI	MM4	MM5	MX0		—	GQ1		w/C3A-C3B
	LL2 V6 2.8 Liter EFI (Reqs N40 Steering)	MM4			#GQ1	**H04		w/C3A-C3B
		MM5	MX0		#GQ1	H04		w/C3A-C3B

*CS10803 Only
#N/A P235/75R15 Tires
**Reqs P235/75R15 Tires

S-10/15 PICKUP 2- & 4-WHEEL DRIVE

POWER TEAMS

CALIFORNIA ONLY

■PAYLOADS:
C3B: 1000 lbs.
C3A: 1500 lbs.
C3C: 1625 lbs.

POWER TEAMS (CONT'D) (MUST ORDER ENGINE, TRANSMISSION AND REAR AXLE)

W/YF5 CALIFORNIA EMISSION REQUIREMENTS

ENGINE	TRANSMISSION			AXLE				PAYLOAD
	4-SP	5-SP	AUTO	3.08	3.42	3.73	4.11	
—S10603-S10803								
LN8 L4 2.5 Liter EFI	MM4			—	GQ1	GT4	—	w/C3A-C3B
	MM4			—	—	GQ1	—	w/C3C
		MM5		—	—	GQ1	*H04	w/C3A-C3B
		MM5		—	—	—	*GQ1	w/C3C
			MX0	—	—	GQ1	H04	w/C3A-C3B
LL2 V6 2.8 Liter EFI			MX0	—	—	—	GQ1	w/C3C
	MM4			GQ1	GU6	—	—	ALL
		MM5		—	GQ1	GT4	—	w/C3A-C3B
		MM5		—	GQ1	GT4	—	w/C3C
			MX0	—	GQ1	GT4	—	ALL
—S10653								
LN8 L4 2.5 Liter EFI	MM4			—	GQ1	GT4	—	w/C3A-C3B
		MM5	MX0	—	—	GQ1	H04	w/C3A-C3B
LL2 V6 2.8 Liter EFI	MM4			GQ1	GU6	—	—	w/C3A-C3B
		MM5	MX0	—	GQ1	GT4	—	w/C3A-C3B
—T10603-T10803-T10653								
LN8 L4 2.5 Liter EFI	MM4			—	—	#GQ1	**H04	w/C3A-C3B
		MM5	MX0	—	—	—	GQ1	w/C3A-C3B
LL2 V6 2.8 Liter EFI (Reqs N40 Steering)	MM4			—	—	#GQ1	**H04	w/C3A-C3B
		MM5	MX0	—	—	#GQ1	H04	w/C3A-C3B

*CS10803 Only
#N/A P235/75R15 Tires
**Reqs P235/75R15 Tires

ENGINE RATINGS

SAE Net Ratings	2.5 Liter 151 EFI L4	2.8 Liter 173 EFI V6
Net Horsepower	92 @ 4400 rpm	125 @ 4800 rpm
Net Torque, lb-ft	130 @ 3200 rpm	150 @ 2400 rpm

S10 2 AND 4 WHEEL DRIVE PICKUP (1000-lb - 1625-lb Payload)

1987 VEHICLES WITH STANDARD EQUIPMENT

Prices shown are effective with initial shipments of 1987 model motor vehicles

Description	Model Number	Body Code	Wheel Base	Factory D&H(a)	List Price	Mfr's Suggested Retail Price*	Group Number
<i>(All Series have Regular Cab unless otherwise indicated)</i>							
◆ 4-Cylinder 2.5 Liter E.F.I. L4 Gasoline Engine-Engine Ordering Code LN8							
S10 Series 2-Wheel Drive							
Fleetside EL (6-ft)	CS10603	E63 & X81	108.3"	N.A.	6595.00	6595.00	14
Fleetside (6-ft)	CS10603	E63 & X96	108.3"	N.A.	7435.00	7435.00	14
Fleetside (7 1/3-ft)	CS10803	E63	117.9"	N.A.	7702.00	7702.00	14
Extended Cab. Fleetside (6-ft)	CS10653	E63	122.9"	N.A.	8167.00	8167.00	14
S10 Series 4-Wheel Drive							
Fleetside (6-ft)	CT10603	E63	108.3"	N.A.	9550.00	9550.00	14
Fleetside (7 1/3-ft)	CT10803	E63	117.9"	N.A.	9718.00	9718.00	14
Extended Cab Fleetside (6-ft)	CT10653	E63	122.9"	N.A.	10064.00	10064.00	14

★ Manufacturer's Suggested Retail Prices do not include applicable destination charges, state and local taxes, license fees, optional equipment or special items or services.

◆ Refer to Power Team Chart for California Emission Certification Requirements.

OPTIONS WHEN INSTALLED BY GENERAL MOTORS

Prices shown are effective with initial shipments of 1987 model motor vehicles

Description	Option Number	Factory D&H(a)	List Price	Mfr's Suggested Retail Price◇
Durango/High Sierra Equipment: (See Interior and Exterior Color Selection Charts) Includes V22 Black and Chromed Grille, black and chromed headlamp bezels, VG3 Deluxe Chromed Front Bumper With Rub Strip, special decal on tailgate, side window defogger, deluxe vent system, courtesy lamp, glove box and ashtray lamps, headlamp warning buzzer, U37 Cigarette Lighter, folding bench seat, color-keyed floor mats, dash and front floor insulation and deluxe appearance.				
S1 Regular Cab only. Not available when X81 is specified. Available only when Custom Trim is specified. Includes deluxe steering wheel.				
Without ZQ8 Sport Suspension or QYH P215/65R15 Tires. Also includes P06 Trim Rings	YC1	N.A.	339.00	339.00
With ZQ8 Sport Suspension or QYH P215/65R15 Tires	YC1	N.A.	277.00	277.00
T1 Regular Cab only Available only when Custom Trim is specified. Also includes P06 Trim Rings				
Extended Cab only. Available only when Special Custom or Custom Trim is specified.	YC1	N.A.	318.00	318.00
S1 Extended Cab only without QYH P215/65 R15 Tires. Also includes P06 Trim Rings and deluxe steering wheel				
Extended Cab only with QYH P215/65 R15 Tires. Also includes deluxe steering wheel	YC1	N.A.	313.00	313.00
T1 Extended Cab only. Also includes P06 Trim Rings				
Extended Cab only with QYH P215/65 R15 Tires. Also includes deluxe steering wheel	YC1	N.A.	252.00	252.00
T1 Extended Cab only. Also includes P06 Trim Rings				
Extended Cab only with QYH P215/65 R15 Tires. Also includes deluxe steering wheel				
Extended Cab only with QYH P215/65 R15 Tires. Also includes deluxe steering wheel	YC1	N.A.	293.00	293.00
Tahoe/Sierra Classic Equipment: (See Interior and Exterior Color Selection Charts) Includes V22 Black and Chromed Grille, black and chromed headlamp bezels, color-keyed door handle inserts, B84 Black Body Side and Bright Wheel Opening Moldings, chromed taillamp molding, special applique on tailgate, D34 Visor Mirror, color-keyed carpeting, courtesy lamps, glove box and ashtray lamps, headlamp warning buzzer, U37 Cigarette Lighter, side window defogger, deluxe vent system, cab back insulation, headliner, Z53 Gage Package with Trip Odometer and VG3 Deluxe Chromed Front Bumper with rub strip. Available only when Special Custom or Custom Trim is specified.				
S1 Regular Cab only. Not available when X81 is specified.				
Without ZQ8 Sport Suspension or QYH P215/65R15 Tires. Also includes P01 Bright Wheel Covers	YC2	N.A.	637.00	637.00
With ZQ8 Sport Suspension or QYH P215/65R15 Tires	YC2	N.A.	591.00	591.00
S1 Extended Cab only. Also includes P01 Bright Wheel Covers				
Without QYH P215/65R15 Tires	YC2	N.A.	729.00	729.00
With QYH P215/65R15 Tires	YC2	N.A.	688.00	688.00
T1 Regular Cab only. Also includes P06 Trim Rings	YC2	N.A.	632.00	632.00
T1 Extended Cab only. Also includes P06 Trim Rings	YC2	N.A.	729.00	729.00

(a) D & H Charges on vehicle and optional equipment include reimbursement to ordering Division for any tax that it has paid, incurred or agreed to pay thereon.

◇ State and local taxes not included.

S10/15 2 AND 4 WHEEL DRIVE PICKUP

OPTIONS WHEN INSTALLED BY GENERAL MOTORS

Prices shown are effective with initial shipments of 1987 model motor vehicles

Description	Option Number	Factory D&H(a)	List Price	Mfr's Suggested Retail Price◇
Sport/Gypsy Equipment: (See Interior and Exterior Color Selection Charts)				
Available only when Sport Bucket Seats and ZY7 Sport or ZY6 Custom Two-Tone Paint are specified. Includes black grille, black and chromed headlamp bezels, black door handle inserts, B84 Black Body Side Moldings, B74 Black Wheel Opening Moldings, chromed taillamp molding, special applique on tailgate, color-keyed front bumper with rub strip, D34 Visor Mirror, U37 Cigarette Lighter, courtesy lamps, glove box and ashtray lamps, deluxe vent system and side window defogger, headlamp warning buzzer, Z53 Gage Package with Trip Odometer, D55 Console, full color-keyed carpet, cab back insulation, headliner, special steering wheel and column.				
S1 Regular cab only. Not available when X81 is specified.				
Without ZQ8 Sport Suspension or QYH P215/65R15 Tires. Also includes ZJ7 Rally Wheels	YC3	N.A.	909.00	909.00
With ZQ8 Sport Suspension or QYH P215/65 Tires	YC3	N.A.	816.00	816.00
S1 Extended Cab only.				
Without QYH P215/65R15 Tires. Also includes ZJ7 Rally Wheels	YC3	N.A.	1058.00	1058.00
With QYH P215/65R15 Tires	YC3	N.A.	965.00	965.00
T1 Regular Cab only. Also includes P06 Trim Rings	YC3	N.A.	852.00	852.00
T1 Extended Cab only. Also includes P06 Trim Rings	YC3	N.A.	1006.00	1006.00
Seat Trim: (See Interior and Exterior Color Selection Chart for availability and ordering information).				
V**1 Vinyl Bench. Not available when YC1, YC2 or YC3 is specified			NO ADDITIONAL CHARGE	
L**1 Custom Cloth Bench. Not available when X81 or YC3 is specified				
Without YC1 or YC2		N.A.	52.00	52.00
With YC1 or YC2			NO ADDITIONAL CHARGE	
X**1 Custom Vinyl Bench. Not available when X81 or YC3 is specified.				
Without YC1 or YC2		N.A.	52.00	52.00
With YC1 or YC2			NO ADDITIONAL CHARGE	
X**4 Custom Vinyl High Back Buckets. Driver and Passenger. Replaces vinyl bench seat.				
Regular Cab only. Not available when X81 is specified.				
Without YC1 or YC2		N.A.	188.00	188.00
With YC1 or YC2		N.A.	136.00	136.00
Extended Cab only				
Without YC1 or YC2		N.A.	202.00	202.00
With YC1 or YC2		N.A.	149.00	149.00
H**4 Special Custom Cloth High Back Buckets.				
Regular Cab only. Not available when X81 is specified. Available when YC2 is specified		N.A.	136.00	136.00
Extended Cab only. With YC1 or YC2		N.A.	149.00	149.00
S**4 Sport Cloth High Back Buckets. Not available when X81 is specified. Included when YC3 is specified			NO ADDITIONAL CHARGE	
A**6 Leather High-Back Reclining Buckets. Extended Cab only. Available only when YC2 or YC3 is specified.				
With YC3		N.A.	386.00	386.00
With YC2		N.A.	535.00	535.00
B**4 High Country Sheepskin High Back Buckets				
Regular Cab only				
With YC2		N.A.	459.00	459.00
With YC3		N.A.	320.00	320.00
Extended Cab only				
With YC2		N.A.	473.00	473.00
With YC3		N.A.	320.00	320.00
Paints, Exterior: (See Interior and Exterior Color Selection Chart for ordering information and paint application).				
Solid	ZY1		NO ADDITIONAL CHARGE	
Custom Two-Tone. Not available when X81 is specified. Includes four-tone body striping. Available only when VT3 or VG3 Bumper or YC3 is specified				
Without D90 Sunshine Striping Package	ZY6	N.A.	212.00	212.00
With D90 Sunshine Striping Package	ZY6	N.A.	163.00	163.00
With YC3	ZY6		NO ADDITIONAL CHARGE	
Special Two-Tone. Not available when X81 or YC3 is specified. Middle area painted Color Code Two choice.				
Without YC2. Includes B84 Body Side and Bright Wheel Opening Moldings. Available only when VT3 or VG3 Bumpers are specified	ZY8	N.A.	329.00	329.00
With YC2	ZY8	N.A.	177.00	177.00

(a) D & H Charges on vehicle and optional equipment include reimbursement to ordering Division for any tax that it has paid, incurred or agreed to pay thereon.

◇ State and local taxes not included.

S10/15 2 AND 4 WHEEL DRIVE PICKUP

OPTIONS WHEN INSTALLED BY GENERAL MOTORS

Prices shown are effective with initial shipments of 1987 model motor vehicles

Description	Option Number	Factory D&H(a)	List Price	Mfr's Suggested Retail Price◇
Paints, Exterior: (Continued)				
<i>Sport Two-Tone.</i> Not available when X81 is specified. Included when YC3 is specified.				
Without YC2. Includes paint striping and area below striping painted Color Code Two choice. Available only when VT3 or VG3 Bumpers. are specified	ZY7	N.A.	240.00	240.00
With YC2. Area below B84 Body Side and Bright Wheel Opening Moldings painted Color Code Two choice	ZY7	N.A.	172.00	172.00
Emission Systems: Dealer Note - One of the following emission options must be specified. (See Power Teams Chart for availability and complete specifications.)				
<i>California Emission Requirements.</i> Includes all testing, equipment and /or certification necessary for registration in the state of California. Not Available when NA5 Standard or NA6 High Altitude Emissions are specified				
High Altitude Emission Equipment	YF5 NA6			NO ADDITIONAL CHARGE NO ADDITIONAL CHARGE
Standard Emission Equipment. Not available when YF5 California or NA6 High Altitude Emissions are specified	NA5			NO ADDITIONAL CHARGE
Engines: (See Power Teams Chart for availability and complete specifications)				
<i>Gasoline</i>				
2.5 Liter E.F.I. L4	LN8			NO ADDITIONAL CHARGE
2.8 Liter E.F.I. V6. Not available when X81 is specified. T1 Series available only when N40 Power Steering is specified	LL2	N.A.	295.00	295.00
Transmissions: (See Power Teams Chart for availability and Complete Specifications)				
4-Speed Automatic with Overdrive. Not available when X81 is specified	MX0	N.A.	735.00	735.00
3-Speed Automatic. S1 Series only. Not available when X81 is specified. S1 Extended Cab not available with C3C 1625-lb Payload Capacity. Regular Cab not available when LN8 2.5 Liter Engine and C3C 1625-lb Payload Capacity is specified	MX1 MM4	N.A.	565.00	565.00 NO ADDITIONAL CHARGE
4-Speed Manual				
5-Speed Manual with Overdrive. X81 available only when QFT P205/75R14 Tires are specified	MM5	N.A.	185.00	185.00
Axles, Rear: (See Power Teams Chart for option number selection, availability and complete specifications)				
Optional Ratio	...	N.A.	38.00	38.00
Locking Differential. Not available when X81 is specified	G80	N.A.	252.00	252.00
Tires:				
S1 Series. All Front and Rear rim sizes are 6.00" except when QYH Tires are specified, then rim size is 7.00"				
T1 Series. All Front and Rear rim sizes are 6.00" except when QEB Tires or N90 Wheels are specified, then wheel size is 7.00"				
TUBELESS				
P195/75R14 All Seasons Steel Belted Radial Ply Blackwall (Maximum Capacity 1272-lbs). S1 Series only. (Standard)	QMW			NO ADDITIONAL CHARGE
P195/75R14 All Seasons Steel Belted Radial Ply Whitewall (Maximum Capacity 1272-lbs). S1 Series only. Not available when X81 is specified	QMX	N.C.	84.00	84.00
P205/75R14 All Seasons Steel Belted Radial Ply Blackwall (Maximum Capacity 1392-lbs). S1 Series only.				
Without X81	QFT	N.C.	42.00	42.00
With X81. Available only when MM5 5-Speed Transmission is specified	QFT	N.C.	33.00	33.00
P205/75R14 All Seasons Steel Belted Radial Ply Whitewall (Maximum Capacity 1392-lbs). S1 Series only. Not available when X81 is specified	QJR	N.C.	132.00	132.00
P205/75R14 All Seasons Steel Belted Radial Ply White Lettered (Maximum Capacity 1392-lbs). S1 Series only. Not available when X81 is specified	QSA	N.C.	163.00	163.00
P215/65R15 Highway Steel Belted Radial Ply White Lettered (Maximum Capacity 1365-lbs). S1 Series only. Not available when X81 is specified. Includes 15" X 7" Rally Wheels. Included when Q08 Sport Suspension is specified.	QYH	N.C.	415.00	415.00
P195/75R15 All Season Steel Belted Radial Ply Blackwall (Maximum Capacity 1342-lbs). T1 Series only. (Standard)	QAR			NO ADDITIONAL CHARGE

- (a) D & H Charges on vehicle and optional equipment include reimbursement to ordering Division for any tax that it has paid, incurred or agreed to pay thereon.
◇ State and local taxes not included.

S10/15 2 AND 4 WHEEL DRIVE PICKUP

OPTIONS WHEN INSTALLED BY GENERAL MOTORS

Prices shown are effective with initial shipments of 1987 model motor vehicles

Description	Option Number	Factory D&H(a)	List Price	Mfr's Suggested Retail Price ◇
Tires: (Continued)				
<i>P195/75R15 All Seasons Steel Belted Radial Ply Whitewall</i> (Maximum Capacity 1342-lbs). T1 Series only	QAS	N.C.	84.00	84.00
<i>P205/75R15 All Seasons Steel Belted Radial Ply Blackwall</i> (Maximum Capacity 1453-lbs). T1 Series only	QCE	N.C.	42.00	42.00
<i>P205/75R15 On-Off Road Steel Belted Radial Ply White Lettered</i> (Maximum Capacity 1453-lbs). T1 Series only	QJL	N.C.	212.00	212.00
<i>P205/75R15 All Seasons Steel Belted Radial Ply White Lettered</i> (Maximum Capacity 1453-lbs). T1 Series only	QCF	N.C.	163.00	163.00
<i>P205/75R15 On-Off Road Steel Belted Radial Ply Blackwall</i> (Maximum Capacity 1453-lbs). T1 Series only	QJT	N.C.	89.00	89.00
<i>P235/75R15 On-Off Road Steel Belted Radial Ply White Lettered</i> (Maximum Capacity 1453-lbs). T1 Series only. Included when Z71 Chassis Equipment Package is specified	QEB	N.C.	391.00	391.00
OTHER OPTIONS				
Air Cleaner, Pre-Cleaner: Not available when X81 is specified. Available only when LL2 2.8 Liter Engine is specified	K46	N.A.	44.00	44.00
Air Conditioning: All-Weather. Includes V01 H.D. Radiator when V02 H.D. Radiator and Transmission Oil Cooler is not specified. T1 Series available only when N40 Power Steering is specified. S1 Series with LL2 2.8 Liter Engine, available only when N40 Power Steering is specified				
Without YC1, YC2 or YC3	C60	N.A.	781.00	781.00
With YC1, YC2 or YC3	C60	N.A.	745.00	745.00
Battery: Heavy-Duty. 630 Cold Cranking Amps, Delco Freedom. Not available when X81 is specified. Included when V10 Cold-Climate Package is specified.	UA1	N.A.	56.00	56.00
Brakes: Vacuum Power. Standard on T1 Series and S10653 Extended Cab only. Included when C3A 1500-lb or C3C 1625-lb Payload Capacity is specified	J50	N.A.	101.00	101.00
Bumper Equipment:				
Bumpers, Painted. Color-Keyed with rub strip. Available only when ZY6 Custom, ZY7 Sport or ZY8 Special Two-Tone Paint is specified. Not available when X81 or VG3 Bumper is specified.				
Front. Included when YC3 is specified.				
Without YC1 or YC2	VT3	N.A.	64.00	64.00
With YC1 or YC2	VT3	NO ADDITIONAL CHARGE		
Rear Step. Not available when X81 is specified. Available only when VT3 Front Bumper or YC3 is specified	VB2	N.A.	143.00	143.00
Rear Step, Black. Not available when VG3 or VT3 Front Bumpers, YC1, YC2, YC3, ZY6 Custom, ZY7 Sport or ZY8 Special Two-Tone Paint is specified. Only available on X81 when X97 Option Package is specified	V43	N.A.	130.00	130.00
Bumpers Deluxe, Chromed.				
Front with rub strip. Included when YC1 or YC2 is specified. Not available when X81, YC3, VB2 or V43 Step Bumpers are specified	VG3	N.A.	65.00	65.00
Rear Step with rub strip. Available only when VG3 Chromed Front Bumper, YC1 or YC2 is specified. Not available when X81, YC3 or VT3 Color-Keyed Bumper is specified	VB3	N.A.	229.00	229.00
Bumper Guards, Front, Black. Not available when X81 is specified. Available only when VG3 Deluxe Chromed Bumper, VT3 Color-Keyed Front Bumper, YC1, YC2 or YC3 is specified	V28	N.A.	32.00	32.00
Chassis Equipment: Off Road Package. T1 Series only. Not available when F51 H.D. Shocks are specified. Available only when C3A Payload Capacity is specified. Includes QEB P235/75R15 Tires, special torsion bars, shock absorbers, jounce bumpers and front stabilizer bar, NY7 Transfer Case Shield, NY1 Fuel Tank Shield, P06 Trim Rings and V76 Tow Hooks.				
Without YC1, YC2 or YC3	Z71	N.A.	724.00	724.00
With YC1, YC2 or YC3	Z71	N.A.	664.00	664.00
Cold-Climate Package: Not available when X81 is specified. Includes UA1 H.D. Battery.				
Without YC1, YC2, YC3 or C60 Air Conditioning Includes special insulation, carpeting on rear of cab, lower backlite and quarter trim moldings.	V10	N.A.	215.00	215.00
With YC2 or YC3	V10	N.A.	107.00	107.00
With YC1 or C60 Air Conditioning	V10	N.A.	177.00	177.00

(a) D & H Charges on vehicle and optional equipment include reimbursement to ordering Division for any tax that it has paid, incurred or agreed to pay thereon.

◇ State and local taxes not included.

S10/15 2 AND 4 WHEEL DRIVE PICKUP

OPTIONS WHEN INSTALLED BY GENERAL MOTORS

Prices shown are effective with initial shipments of 1987 model motor vehicles

Description	Option Number	Factory D&H(a)	List Price	Mfr's Suggested Retail Price ◊
OTHER OPTIONS				
Console: Front Compartment Floor. Not available when X81 is specified. Available only when Bucket Seats are specified. Included with YC3	D55	N.A.	114.00	114.00
Cooling Systems: Not available when X81 is specified.				
Engine Oil, S1 Series only. Available only when LL2 2.8 Liter Engine, MX1 or MX0 Automatic Transmission and V01 H.D. Radiator or V02 H.D. Radiator and Transmission Oil Cooler are specified.	KC4	N.A.	126.00	126.00
Radiator, Heavy-Duty. Not available when V02 H.D. Radiator and Transmission Oil Cooler is specified. Included when C60 Air Conditioning is specified	V01	N.A.	56.00	56.00
Radiator and Transmission Oil, Heavy-Duty. T1 Series available only when LL2 2.8 Liter Engine and MX0 Transmission is specified. S1 Series available only when LL2 2.8 Liter Engine and MX0 or MX1 Transmission is specified				
Without C60 Air Conditioning	V02	N.A.	118.00	118.00
With C60 Air Conditioning	V02	N.A.	63.00	63.00
Decor, Exterior: Not available when X81 or D90 Sunshine Striping is specified. Includes 4 x 4 decal applied to upper rear corner of the pickup box. The standard 4 x 4 emblem located on the cab pillar is deleted	YJ3	N.A.	21.00	21.00
Door Lock System, Power: Not available when X81 is specified. Included when ZQ2 Operating Convenience Package is specified	AU3	N.A.	144.00	144.00
EL/Special Option Package: Available only when X81 is specified. Includes full-size spare tire, V43 Black Rear Step Bumper and NK2 Fuel Tank				
With QFT P205/75R14 Tires	X97	N.A.	233.00	233.00
With QMW P195/75R14 Tires	X97	N.A.	227.00	227.00
Floor Covering:				
Mats, Color-Keyed, Front, Removable. Not available when X81 or BG9 Full Floor Covering is specified. Available only when YC2 or YC3 is specified	B32	N.A.	16.00	16.00
Full Floor, Rubber, Color-Keyed. Replaces carpeting when YC2 or YC3 is specified. Available only when YC2 or YC3 is specified	BG9	NO ADDITIONAL CHARGE		
Gages: Not available when X81 is specified.				
Voltmeter, Temperature, Oil Pressure and Trip Odometer. Included when YC2, YC3 or U16 Tachometer is specified	Z53	N.A.	62.00	62.00
Tachometer.				
Without YC2 or YC3. Includes Z53 Gage Package	U16	N.A.	120.00	120.00
With YC2 or YC3	U16	N.A.	59.00	59.00
Glass:				
Deep Tinted. Not available when X81 is specified.				
Extended Cab only. Includes dark laminated glass on quarter windows and rear window. Also includes A20 Swing-Out Quarter Windows	AJ1	N.A.	144.00	144.00
Regular Cab only. Includes dark laminated glass on rear window and tinted glass for windshield glass, passenger and driver's side door glass.	AJ1	N.A.	59.00	59.00
Deep Tinted with Light Tinted Rear Window. Extended Cab only. Not available when X81 or AJ1 Deep Tinted glass is specified. Includes dark laminated glass on quarter windows. Also includes A20 Swing-Out Quarter Windows.	AA3	N.A.	98.00	98.00
Tinted. All Windows. Standard on Extended Cab only	A01	N.A.	48.00	48.00
Grille: Black and Chromed. Not available when X81 is specified. Included when YC1 or YC2 is specified. Not available when YC3 is specified	V22	N.A.	62.00	62.00
Harness, Wiring: 5-Lead. Not available when X81 or Z82 Trailering Special is specified	U89	N.A.	41.00	41.00
Heater: Engine Block. 600 watts, 120 volts. Not available when X81 is specified	K05	N.A.	33.00	33.00
Lamp: Cargo Area. Not available when X81 is specified. Included when TR9 Auxiliary Lighting is specified.	UF2	N.A.	36.00	36.00
Lighter, Cigarette: Not available when X81 is specified. Included when YC1, YC2 or YC3 is specified	U37	N.A.	26.00	26.00
Lighting, Auxiliary: Not available when X81 is specified. Includes underhood light and UF2 Cargo Lamp.				
Without YC1, YC2 or YC3. Also includes ashtray light, glove box light, and headlamp warning buzzer	TR9	N.A.	71.00	71.00
With YC1, YC2 or YC3	TR9	N.A.	49.00	49.00

(a) D & H Charges on vehicle and optional equipment include reimbursement to ordering Division for any tax that it has paid, incurred or agreed to pay thereon.

◊ State and local taxes not included.

S10/15 2 AND 4 WHEEL DRIVE PICKUP

OPTIONS WHEN INSTALLED BY GENERAL MOTORS

Prices shown are effective with initial shipments of 1987 model motor vehicles

Description	Option Number	Factory D&H(a)	List Price	Mfr's Suggested Retail Price◇
OTHER OPTIONS				
Mirrors, Exterior: LH and RH. Below Eye-line Type. 7.25 x 6". Not available when X81 is specified				
<i>Painted</i>	D44	N.A.	52.00	52.00
<i>Bright.</i> Not available when YC3 is specified	D45	N.A.	87.00	87.00
Mirror, Visor: RH. Not available when X81 is specified. Included when YC2 or YC3 is specified				
	D34	N.A.	7.00	7.00
Moldings: Not available when X81 is specified.				
<i>Body Side and Wheel Opening.</i> Included when YC2, YC3 or ZY8 Special Two-Tone Paint is specified. Includes lower side and rear moldings of black plastic with bright trim. Without YC3 also includes B96 Bright Wheel Opening Moldings. With YC3 includes B74 Black Wheel Opening Moldings.				
Without ZY7 Sport Two-Tone Paint	B84	N.A.	152.00	152.00
With ZY7 Sport Two-Tone Paint	B84	N.A.	83.00	83.00
<i>Guards, Door Edge</i>	B93	N.A.	18.00	18.00
<i>Wheel Opening.</i>				
Black. Not available when B96 Bright Wheel Opening Moldings are specified. Included when YC3 is specified.				
Without B84 Body Side and Wheel Opening Moldings	B74	N.A.	43.00	43.00
With B84 Body Side and Wheel Opening Moldings	B74	N.A.	13.00	13.00
Bright. Included when YC2, B84 Body Side and Wheel Opening Moldings or ZY8 Special Two-Tone Paint are specified. Not available when YC3 is specified.	B96	N.A.	31.00	31.00
Operating Convenience Package: Not available when X81 is specified. Includes AU3 Power Door Locks and A31 Power Windows				
	ZQ2	N.A.	344.00	344.00
Payload Capacities: (See Power Teams Chart for Engine, Transmission and Axle availability).				
1625-lbs. S1 Regular Cab only. Not available when X81 is specified. Available only when P205 or P215 tires are specified. Includes F59 Stabilizer Bar, extra capacity rear springs and J50 Brakes				
	C3C	N.A.	205.00	205.00
1500-lbs.				
S1 Regular Cab. Not available when X81 is specified. Not available when P205 or P215 Tires are specified. Includes F59 Stabilizer Bar, extra capacity rear springs and J50 Brakes				
	C3A	N.A.	205.00	205.00
	C3A	N.A.	103.00	103.00
S1 Extended Cab. Includes F59 Stabilizer Bar and extra capacity rear springs	C3A	N.A.	64.00	64.00
T1 Series. Includes extra capacity rear springs	C3B	NO ADDITIONAL CHARGE		
1000-lbs	C3W	N.A.	N.A.	N.A.
Preliminary Price Information				
Radio Equipment:				
<i>AM Radio</i> Standard on all models except X81	U63	N.A.	122.00	122.00
<i>AM/FM Radio</i> Not available when X81 is specified	U69	N.A.	92.00	92.00
<i>AM/FM Stereo Radio.</i> Electronically Tuned. Not available when X81 is specified	UU9	N.A.	148.00	148.00
<i>AM/FM Stereo Radio with Seek and Scan and Digital Clock.</i> Electronically Tuned. Not available when X81 is specified	UM7	N.A.	208.00	208.00
<i>AM/FM Stereo Radio with Seek and Scan, Stereo Cassette Tape, and Digital Clock.</i> Electronically Tuned. Includes U66 Premium Dual Rear Speakers. Not available when X81 is specified	UM6	N.A.	354.00	354.00
<i>AM Stereo and FM Stereo Radio with Seek and Scan, Stereo Cassette Tape with Search and Repeat, Digital Clock and Graphic Equalizer.</i> Electronically Tuned. Includes U66 Premium Dual Rear Speakers. Not available when X81 is specified	UX1	N.A.	504.00	504.00
<i>Speakers, Premium, Dual Rear.</i> Available only when UU9 or UM7 Radio is specified. Included with UM6 or UX1 Radio. Not available when X81 is specified	U66	N.A.	27.00	27.00
<i>Radio Delete.</i> Not available when X81 is specified	UL5	N.A.	(-77.00)	(-77.00)
Rails, Pickup Box Side: Not available when X81 is specified	D73	N.A.	100.00	100.00
Seats:				
<i>Rear Jump.</i> Extended Cab only. Available only when bucket seats are specified. Jump seats are vinyl trim				
	AJ2	N.A.	240.00	240.00
<i>Seat Backs, Adjustable, RH and LH.</i> Extended Cab only. Available only when bucket seats are specified	A78	N.A.	74.00	74.00
Shields: T1 Series only. Included when Z71 Chassis Equipment is specified.				
<i>Fuel Tank.</i> Available only when NY7 Transfer Case Shield is specified	NY1	N.A.	51.00	51.00
<i>Transfer Case.</i> Includes front differential shield. Available only when NY1 Fuel Tank Shield is specified.	NY7	N.A.	75.00	75.00

(a) D & H Charges on vehicle and optional equipment include reimbursement to ordering Division for any tax that it has paid, incurred or agreed to pay thereon.

◇ State and local taxes not included.

S10/15 2 AND 4 WHEEL DRIVE PICKUP

OPTIONS WHEN INSTALLED BY GENERAL MOTORS

Prices shown are effective with initial shipments of 1987 model motor vehicles

Description	Option Number	Factory D&H(a)	List Price	Mfr's Suggested Retail Price◇
OTHER OPTIONS				
Shock Absorbers: <i>Heavy-Duty.</i> Front and Rear. Not available when X81 or Z71 Chassis Equipment is specified. Included when ZQ8 Sport Suspension or F60 H.D. Front Suspension is specified	F51	N.A.	36.00	36.00
Speed Control, Electronic: Not available when X81 is specified	K34	N.A.	205.00	205.00
Stabilizer Bar: <i>Front.</i> Standard on T1 Series. Not available when X81 is specified. Included when C3A 1500-lb or C3C 1625-lb Payload Capacity is specified	F59	N.A.	40.00	40.00
Steering: <i>(One of the following steering options must be specified.)</i>				
<i>Power.</i> Not available when X81 is specified. Included when ZQ8 Sport Suspension Equipment is specified	N40	N.A.	275.00	275.00
<i>Power, Not Desired.</i> Not available when Z82 Trailering Special is specified	N51	NO ADDITIONAL CHARGE		
Steering Wheel: <i>Comfortilt.</i> Not available when X81 is specified	N33	N.A.	121.00	121.00
Striping, Body: Available only when ZY1 Solid Paint and the following stripe color is specified. Not available when X81, B84 Body Side and Wheel Opening Moldings or YC3 is specified. Included when ZY7 Sport Two-Tone Paint is specified. <i>(See Interior and Exterior Color Availability Charts for Ordering Information.)</i>	D85	N.A.	69.00	69.00
Stripe Color:				
<i>Black</i>	19A	NO ADDITIONAL CHARGE		
<i>Blue, Dark</i>	28A	NO ADDITIONAL CHARGE		
<i>Gold.</i> Available only when D98 Striping is specified	67A	NO ADDITIONAL CHARGE		
<i>Red</i>	72A	NO ADDITIONAL CHARGE		
<i>Silver.</i> Available only when D98 Striping is specified	17A	NO ADDITIONAL CHARGE		
<i>White</i>	12A	NO ADDITIONAL CHARGE		
Rally Striping: Not available when X81 Price leader is specified. Available only when ZY1 Paint and stripe color is specified. <i>(See Interior and Exterior Color Availability Charts for Ordering Information.)</i>	D98	N.A.	84.00	84.00
Sunshine Striping: Available only when ZY1 Solid Paint or ZY6 Custom Two-Tone Paint is specified. Includes 4 decal stripes along the full length of the vehicle. <i>(See Interior and Exterior Color Availability Charts for Ordering Information.)</i> Available only when stripe color is specified.	D90	N.A.	116.00	116.00
Suspension Equipment:				
<i>Front, Heavy Duty, T1 series only.</i> Includes F51 H.D. Front and Rear Shock Absorbers. Recommended for snowplow type usage only	F60	N.A.	63.00	63.00
<i>Sport.</i> S1 Regular Cab only. Not available when X81 is specified. Available only when C3C 1625-lb payload is specified. Includes F51 H.D. Front and Rear Shocks, N40 Power Steering, QYH P215/65R15 Tires and 15" x 7" rally wheels	ZQ8	N.A.	676.00	676.00
Tank, Fuel: <i>LH Frame Mounted.</i> Only available on X81 when X97 Option Package is specified Replaces Standard Production Fuel Tank. Approximately 20-gallon capacity.	NK2	N.A.	51.00	51.00
Towing Device: <i>Two front hooks.</i> T1 Series only. Included when Z71 Chassis Equipment is specified	V76	N.A.	38.00	38.00
Trailering Special: <i>(See Trailering Guide for GCW ratings with available power train combinations.) Heavy-Duty.</i> Not available when X81 is specified. Available only when LL2 2.8 Liter Engine, N40 Power Steering, V02 H.D. Radiator and Transmission Oil Cooler and C3A or C3C Payload Capacity Option are specified. T1 Series available only when MX0 Transmission and 4.11 Rear Axle is specified. S1 Series available only when MX0 Transmission and 3.73 Rear Axle Ratio or MX1 Transmission and 4.11 Rear Axle Ratio are specified. Includes 7-lead wiring harness, weight distributing hitch platform and H.D. flasher.	Z82	N.A.	211.00	211.00
Wheel Trim: Not available when X81 is specified				
<i>Trim Rings.</i> Not available on S1 series when YC2 is specified. Included when Z71 Chassis Equipment, YC1 or YC3 is specified. Also included with YC2 on T1 Series	P06	N.A.	60.00	60.00
<i>Wheel Covers.</i> S1 Series only. Not available when P06 Trim Rings, ZQ8 Sport Suspension Equipment, QYH P215 Tires, YC3 or ZJ7 Rally Wheels are specified. Included when YC2 is specified				
Without YC1	P01	N.A.	42.00	42.00
With YC1	P01	N.A.	(-16.00)	(-16.00)

(a) D & H Charges on vehicle and optional equipment include reimbursement to ordering Division for any tax that it has paid, incurred or agreed to pay thereon.
 ◇ State and local taxes not included.

S10/15 2 AND 4 WHEEL DRIVE PICKUP

OPTIONS WHEN INSTALLED BY GENERAL MOTORS

Prices shown are effective with initial shipments of 1987 model motor vehicles

Description	Option Number	Factory D&H(a)	List Price	Mfr's Suggested Retail Price◇
OTHER OPTIONS				
Wheels:				
<i>Aluminum.</i> Cast. Wheel size 7". Four wheels only. T1 Series only. Not available when X81 is specified. Not available when QAR or QAS P195 Tires are specified.				
Without YC1, YC2, YC3 or Z71 Chassis Equipment Package	N90	N.A.	308.00	308.00
With YC1, YC2, YC3 or Z71 Chassis Equipment Package	N90	N.A.	252.00	252.00
<i>Rally.</i> Wheel size 14" x 6". Painted argent with P06 Trim Rings and special hub caps. Four Wheels only. S1 Series only. Not available when ZQ8 Sport Suspension or QYH P215 tires are specified.				
Without YC1 or YC2	ZJ7	N.A.	92.00	92.00
With YC1	ZJ7	N.A.	34.00	34.00
With YC2	ZJ7	N.A.	50.00	50.00
Windows: Not available when X81 is specified.				
<i>Power.</i> Included when ZQ2 Operating Convenience Package is specified	A31	N.A.	200.00	200.00
<i>Sliding Rear.</i> Not available when AJ1 Deep Tinted Glass is specified	A28	N.A.	113.00	113.00
<i>Swing-Out Quarter.</i> Extended Cab only. Included with AJ1 or AA3 Deep Tinted Glass	A20	N.A.	43.00	43.00
Windshield Wiper System: <i>Intermittent</i> Not available when X81 is specified	CD4	N.A.	59.00	59.00

(a) D & H Charges on vehicle and optional equipment include reimbursement to ordering Division for any tax that it has paid, incurred or agreed to pay thereon.
 ◇ State and local taxes not included.

S10/15 2 AND 4 WHEEL DRIVE PICKUP

OPTIONS WHEN INSTALLED BY GENERAL MOTORS

Prices shown are effective with initial shipments of 1987 model motor vehicles

Description	Option Number	Factory D&H(a)	List Price	Mfr's Suggested Retail Price ◊
OTHER OPTIONS				
Trailer Special: (See Trailering Guide for GCW ratings with available power team combinations.) Heavy-Duty. Not available when X81 is specified. Available only when LL2 2.8 Liter Engine, N40 Power Steering, V02 H.D. Radiator and Transmission Oil Cooler and C3A or C3C Payload Capacity Option are specified. T1 Series available only when MX0 Transmission and 4.11 Rear Axle is specified. S1 Series available only when MX0 Transmission and 3.73 Rear Axle Ratio or MX1 Transmission and 4.11 Rear Axle Ratio are specified. Includes 7-lead wiring harness, weight distributing hitch platform and H.D. flasher.				
	Z82	N.A.	211.00	211.00
Wheel Trim: Not available when X81 is specified				
Trim Rings. Not available on S1 series when YC2 is specified. Included when Z71 Chassis Equipment, YC1 or YC3 is specified. Also included with YC2 on T1 Series				
	P06	N.A.	60.00	60.00
Wheel Covers. S1 Series only. Not available when P06 Trim Rings, ZQ8 Sport Suspension Equipment, QYH P215 Tires, YC3 or ZJ7 Rally Wheels are specified. Included when YC2 is specified				
	P01	N.A.	42.00	42.00
	P01	N.A.	(-16.00)	(-16.00)
Wheels:				
<i>Aluminum.</i> Cast. Wheel size 7". Four wheels only. T1 Series only. Not available when X81 is specified. Not available when QAR or QAS P195 Tires are specified.				
	N90	N.A.	308.00	308.00
	N90	N.A.	252.00	252.00
<i>Rally.</i> Wheel size 14" x 6". Painted argent with P06 Trim Rings and special hub caps. Four Wheels only. S1 Series only. Not available when ZQ8 Sport Suspension or QYH P215 tires are specified.				
	ZJ7	N.A.	92.00	92.00
	ZJ7	N.A.	34.00	34.00
	ZJ7	N.A.	50.00	50.00
Windows: Not available when X81 is specified.				
<i>Power.</i> Included when ZQ2 Operating Convenience Package is specified				
	A31	N.A.	200.00	200.00
<i>Sliding Rear.</i> Not available when AJ1 Deep Tinted Glass is specified				
	A28	N.A.	113.00	113.00
<i>Swing-Out Quarter.</i> Extended Cab only. Included with AJ1 or AA3 Deep Tinted Glass				
	A20	N.A.	43.00	43.00
Windshield Wiper System: <i>Intermittent</i> Not available when X81 is specified				
	C04	N.A.	59.00	59.00

(a) D & H Charges on vehicle and optional equipment include reimbursement to ordering Division for any tax that it has paid, incurred or agreed to pay thereon.
 ◊ State and local taxes not included.

NOTES

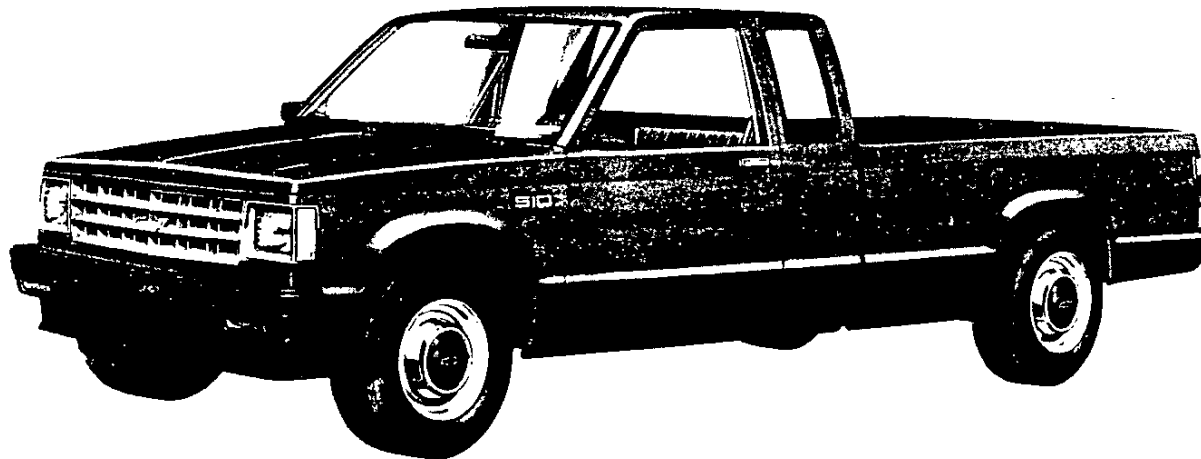
S-10/15 PICKUP 2- & 4-WHEEL DRIVE

**CAB & BODY FEATURES
CAB CONSTRUCTION
CAB DIMENSIONS
COLOR & TRIM CHARTS
TWO-TONES**

S-10/15 PICKUP 2- & 4-WHEEL DRIVE

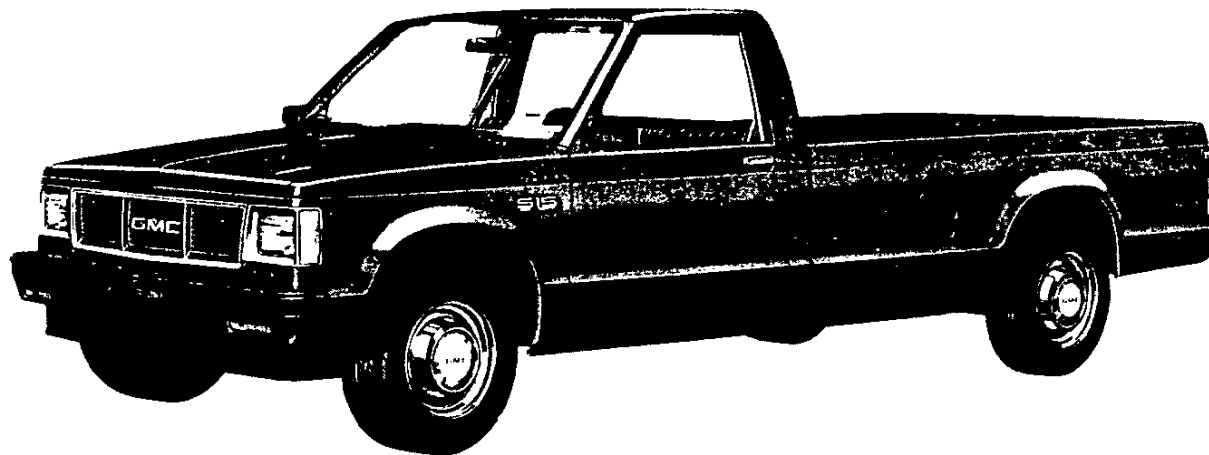
STANDARD MODEL—FEATURES

The standard models include the following items as standard equipment



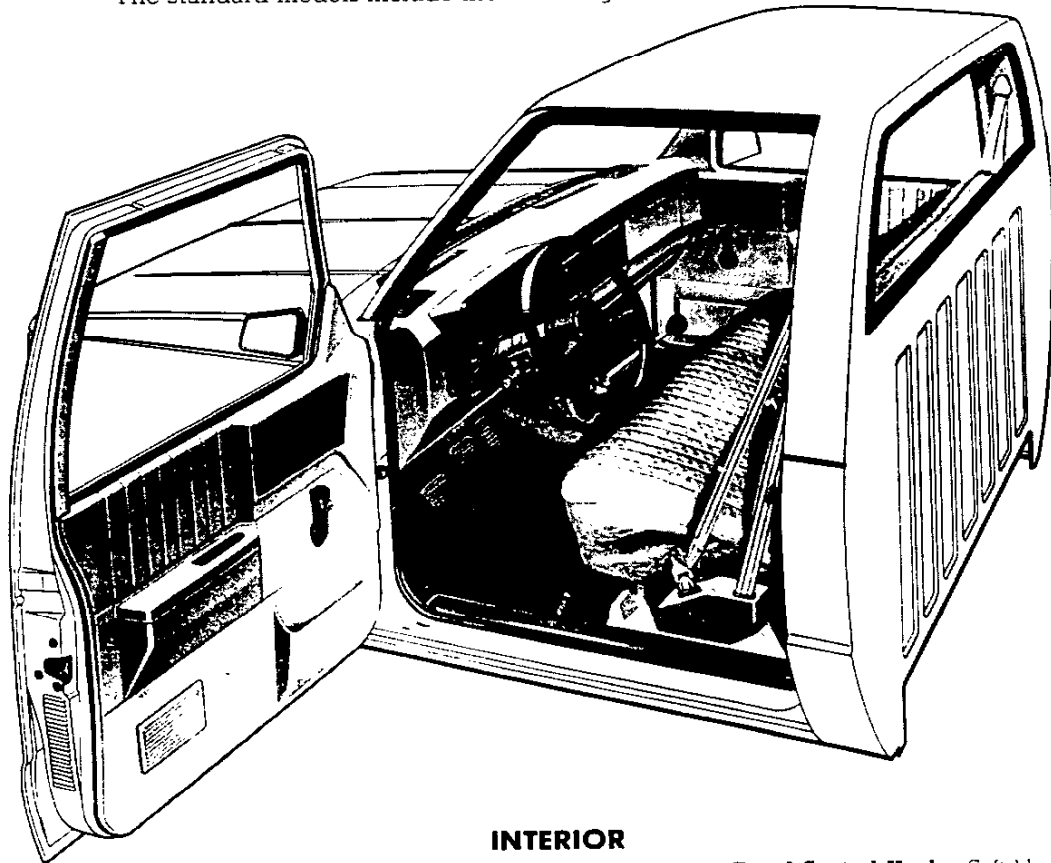
EXTERIOR

- **Bumper:** Front, painted low-gloss black; incorporating parking lamps
- **Color:** See Interior and Exterior Color Selection Chart
- **Grille:** Molded plastic; painted dark argent; integral Chevrolet emblem/GMC letters at center of grille
- **Glass:** Tinted, all windows (Extended cabs only)
- **Headlamp-Front Side Marker Lamp Bezels:** Molded plastic with chromed finish
- **Horn:** Single, electric, high-note
- **Hub Caps:** Bright metal. Black trim on Chevrolet models
- **Keys:** Two-key system; with separate keys for ignition switch and door locks
- **Lettering, Tailgate:** Black or silver decal on Chevrolet/GMC letters depending on exterior color
- **Lights:**
 - Backup lamps: Two rear (integral with taillamps)
 - Combination parking/direction/hazard: Two front
 - Combination tail/stop/direction/hazard: Two rear
- **Headlamps:** Two, rectangular. Halogen type (except EL/Special model)
- **License plate lamp:** Single rear
- **Side marker lamps with reflectors:** Two front; two rear (integral with taillamps)
- **Mirrors:** RH and LH fixed arm with adjustable 6½" wide x 4" high aerodynamic heads; low gloss black finish. RH mirror is convex
- **Moldings:** Low-gloss black windshield
- **Nameplates:** Bright "S-10/S-15 Sierra" nameplates on front fenders near doors. Engine designation nameplate under LH headlamp. 4-wheel-drive models have "4x4" nameplates on cab rear corner panels
- **Pickup Box:** Steel floor, welded double wall construction; painted body color
- **Spare Tire Carrier:** Winch-type; mounted under frame at rear
- **Wheels:** Painted argent
- **Windshield Wipers and Washers:** Electric, 2-speed wipers with low-gloss black finish on exposed metal portions; coordinated washer with fluidic oscillator at center of plenum inlet grille



S-10/15 PICKUP 2- & 4-WHEEL DRIVE STANDARD MODEL—FEATURES

The standard models include the following items as standard equipment



INTERIOR

- **Armrests:** RH and LH padded; integral with door trim panels
- **Ashtray:** In middle of instrument panel
- **Coat Hook:** RH side
- **Colors:**
Painted areas: Same as exterior primary color choice
Interior trim: Coordinated with seat trim color choice
- **Door Sill Plates:** Door-opening protection and floor mat retention, full-length; black plastic
- **Door Trim Panels:** Color-keyed, embossed molded plastic with integral armrests, map pockets and black housing in door latch release handle area
- **Floor Covering:** Embossed black rubber mat (partial only on conventional cab)
- **Grab Handle:** Over RH door (4x4 models only)
- **Headliner:** Color-keyed; partial roof coverage; styrene laminate with thin foam and cloth cover (full foam and full coverage on extended cab)
- **Heater and Defogger:** Conventional outside air type
- **Hood Lock Release:** Handle located under LH side of instrument panel
- **Instrument Panel Trim:** Smooth low gloss black finish for instrument cluster bezel, and textured charcoal finished central area. Low gloss black light switch panel, heater/air conditioner control panel and RH/LH air conditioning outlet cover plates
- **Instruments:**
Gages: Speedometer, odometer and fuel
Switches: Main, for control of exterior lights, instrument cluster lights, and cab interior lights; combination steering column switch for direction signals by moving lever up and down, headlamp beams by moving lever fore and aft, and windshield wiper and washer by turning lever to wipe and pressing lever in to wash; hazard warning; heater fan; ignition with key-in warning buzzer
Warning lights: Generator, oil pressure, engine temperature, seat belt, service-parking brake, direction/hazard signal, and high beam
- **Instrument Panel Control Knobs:** Soft black plastic (except heater and wiper-washer controls) with white graphic identification
- **Instrument Panel Pad:** Color-keyed, energy-absorbing foam type with injection molded plastic substrate
- **Insulation and Sound Deadening Material:** On dash (fire-wall), under floor mat, spray deadener inside of doors, plugs on windshield pillars, on roof underside, and on headliner
- **Lights:** Instrument cluster and cab interior lights. Dome light (except EL/Special model) (includes door-operated switches for dome and cab interior lights)
- **Mirror, Rearview:** 10" prismatic with soft vinyl rim
- **Radio:** AM (except EL/Special model)
- **Seats:** Full-width, full depth foam bench-type with folding backrest. All-vinyl embossed grained seat trim is standard. Also available at extra cost: 1) Textured velour custom cloth bench seat; 2) Leather grained custom vinyl bench seat; 3) Leather grained custom vinyl high back bucket seats; or 4) (for extended cabs only) Leather grained vinyl trimmed rear jump seats. See Interior and Exterior Color Selection Chart for color and trim availability
- **Seat Belts:** Non-detachable combination lap and shoulder belts for onboard positions with emergency-locking retractors; lap belt with manual adjustment for center position. All seat belts are color-keyed with pushbutton type buckles
- **Steering Wheel and Column:** 15¼" black, soft plastic wheel with 2 spokes; black energy-absorbing steering column with anti-theft locking feature
- **Stowage Box:** In RH side of instrument panel; with bright key-operated lock and "S-10/S-15 Sierra" nameplate; lock operated by door key
- **Sunshades:** RH and LH padded; color-keyed
- **Tools:** Mechanical jack and wheel wrench behind seat on RH side
- **Tray:** Small package tray on lower right half of instrument panel.
- **Trim Panels and Moldings:** Color-keyed moldings on windshield pillars, upper rear quarter trim panels on extended cab, and jack cover on extended cab (charcoal)

S-10/15 PICKUP 2- & 4-WHEEL DRIVE DURANGO/HIGH SIERRA MODEL OPTION—RPO YC1

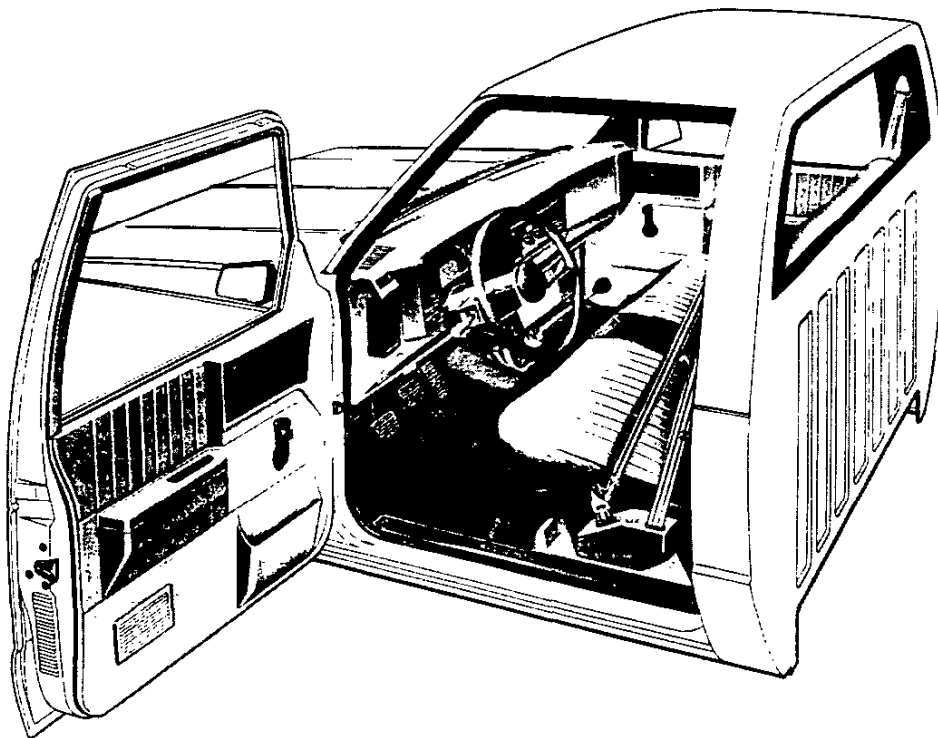
This option includes all standard model items plus the additions or substitutions listed below



Chevrolet model shown (GMC model available)

EXTERIOR

- **Bright Appearance Items:**
 - "Durango/High Sierra" nameplates with series designation on front fenders
 - Front bumper (includes black rub strip)
 - Trim on bumper rub strips
- **Trim on black grille**
- **Taillamp trim**
- **Wheel trim rings**
- **Lettering, Tailgate:** Same as for standard model except reflectorized (reflects at night)



INTERIOR

- **Bright Appearance Items:**
 - "Durango/High Sierra" nameplate on stowage box door
 - Dome lamp trim
- **Cigar Lighter:** With ashtray light
- **Floor Covering:** Color-keyed rubber mat for entire floor area
- **Headlamp Warning Buzzer**
- **Heater and Defogger:** Deluxe outside air type with power center and outboard instrument panel vents and side window defoggers
- **Insulation and Sound Deadening Material:** Under floor mat
- **Jack Cover:** Color-keyed (extended cab only)
- **Seats:** Choice of: 1) textured velour custom cloth bench seat; or 2) leather grained custom vinyl bench seat. Also available at extra cost: 1) leather grained custom vinyl high back bucket seats; 2) (for extended cabs only) dual-tone woven special custom cloth high back bucket seats; or 3) (for extended cabs only) leather grained custom vinyl trimmed rear jump seats mounted to the rear compartment side walls. See Interior and Exterior Color Selection Chart for color and trim availability
- **Steering Wheel and Column:** Deluxe; color-keyed
- **Stowage Box Light**

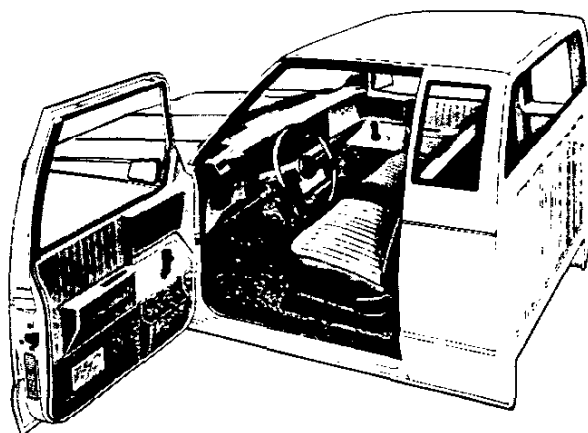
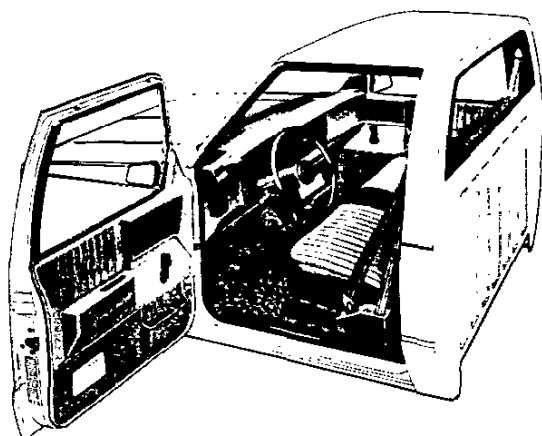
S-10/15 PICKUP 2- & 4-WHEEL DRIVE TAHOE/SIERRA CLASSIC MODEL OPTION—RPO YC2

This option includes all of the Durango/High Sierra model option items plus the additions or substitutions listed below



EXTERIOR

- **Bright Appearance Items:**
 - "Tahoe/Sierra Classic" nameplates with series designation on front fenders
 - Body side molding trim
 - Bright wheel opening lip moldings
 - Wheel covers (2-wheel drive models); Hub caps and trim rings (4-wheel drive models)
 - Delete wheel trim rings (2-wheel drive models only)
- **Cab-to-Fender Insulators**
- **Door Handle Inserts:** Body color
- **Hood Insulator**
- **Moldings:** Black plastic body side moldings with bright insert
- **Tailgate Trim:** Black applique with bright "Chevrolet" and red "GMC" lettering and trim
- **Wheels:** Painted black (2-wheel drive models); Painted argent (4-wheel drive models)



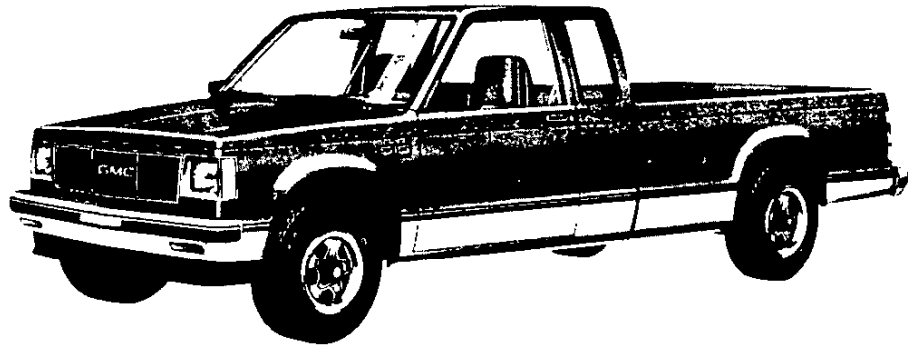
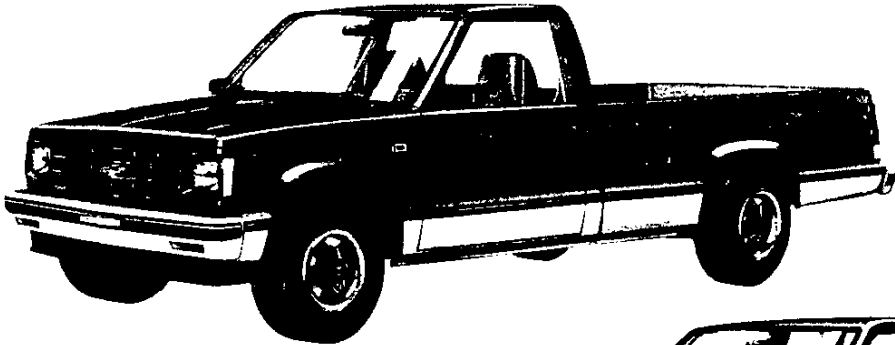
INTERIOR

- **Bright Appearance Items:**
 - "Tahoe/Sierra Classic" nameplate on stowage box door
- **Door Trim Panels:** Special custom cloth upper insert; carpeted lower insert with pocket, plus coin holder in LH door
- **Floor Covering:** Color-keyed carpeting for entire floor area and on cab back panel (Color-keyed rubber mats are available, if desired)
- **Headliner:** Full coverage molded styrene; full foam with color-keyed cloth cover (conventional cab)
- **Instrument Cluster:** Voltmeter, oil pressure gage and engine temperature gage replace warning lamps; also includes trip odometer
- **Insulation and Sound Deadening Material:** On plenum panels (part of specific dash mat), under floor and cab back panel carpeting, on floor and cab back panel carpeting, extra-thick on headliner, on door trim panels, and on lower portion of instrument panel
- **Seats:** Choice of: 1) leather grained custom vinyl bench seat; or 2) textured velour custom cloth bench seat. Also available at extra cost: 1) leather grained custom vinyl high back bucket seats; 2) dual-tone woven special custom cloth high back bucket seats; 3) (for extended cabs only) genuine leather high back bucket seats; or 4) (for extended cabs only) two leather grained custom vinyl trimmed rear jump seats mounted to the rear compartment side walls
- **Trim Panels and Moldings:** Color-keyed cowl kick panels; upper (conventional cab) and lower rear quarter panels; lower backlight molding, and jack cover (conventional cab)
- **Visor Mirror:** On RH sun visor

S-10/15 PICKUP 2- & 4-WHEEL DRIVE

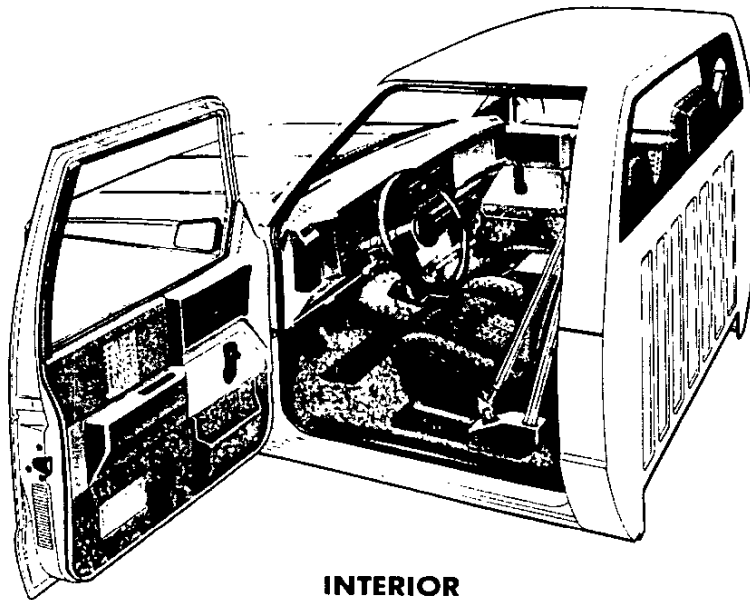
SPORT/GYPSY MODEL OPTION—RPO YC3

This option includes all items in the Tahoe/Sierra Classic model option plus the additions or substitutions listed below



EXTERIOR

- **Bright Appearance Items:**
 - "Sport/Gypsy" nameplates with series designation on front fenders
 - Wheel trim rings (2-wheel drive models only)
 - Delete bright wheel opening lip moldings
- **Bumper:** Color-keyed to lower accent color, with black rub strips
- **Door Handles:** Black chrome; also includes black chrome key cylinder covers
- **Grille:** Black chrome grille and headlamp bezels
- **Two-Tone Paint:** ZY7 lower-accent paint
- **Wheels:** 2-wheel drive—Rally wheels painted argent and black, with black ornamental hubs and bright trim rings.
4-wheel drive—base argent wheels with black ornamental hubs and bright trim rings.
- **Wheel Opening Lip Moldings:** Black plastic



INTERIOR

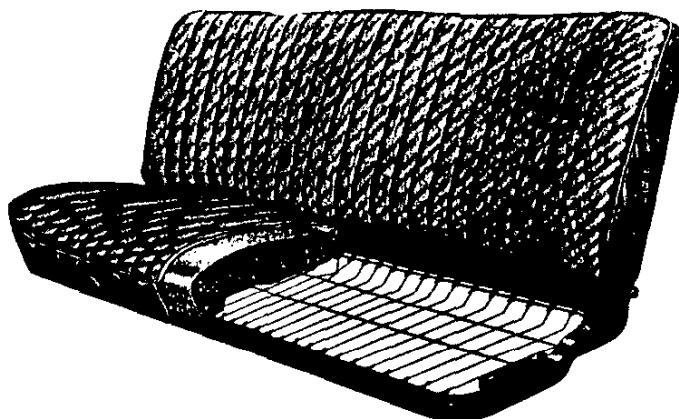
- **Bright Appearance Items:**
 - "Sport/Gypsy" nameplate on storage box door
- **Console:** Color-keyed molded plastic with lockable storage compartment; lock operated by door key
- **Door Trim Panels:** Sport cloth insert to match seat trim
- **Seats:** Sport cloth high back bucket seats. Also available at extra cost (for extended cabs only): Genuine leather high back bucket seats. See Interior and Exterior Color Selection Chart for color and trim availability
- **Steering Wheel:** Sport wheel with simulated leather look

S-10/15 PICKUP 2- & 4-WHEEL DRIVE

PICKUP SEATS

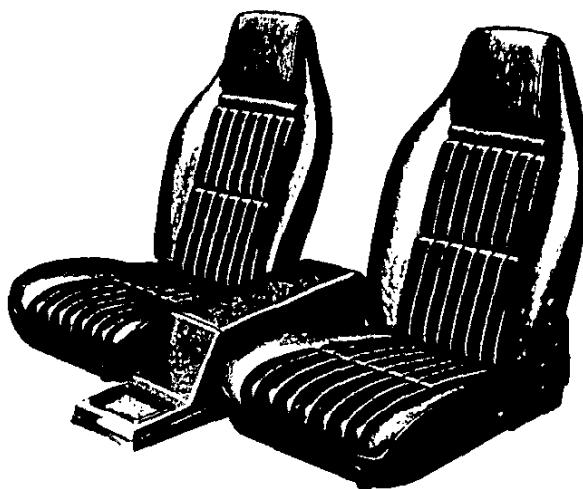
STANDARD FULL-DEPTH FOAM SEAT

Molded polyurethane foam pads over a steel cushion spring and frame assembly and a backrest frame assembly provide resilient support for driver and passengers, with an extra-thick pad employed for the cushion. A folding type backrest with inertia latch is used, providing convenient access to the stowage area behind the seat. Seats are adjustable fore and aft. Trim is durable, easy-to-clean vinyl.



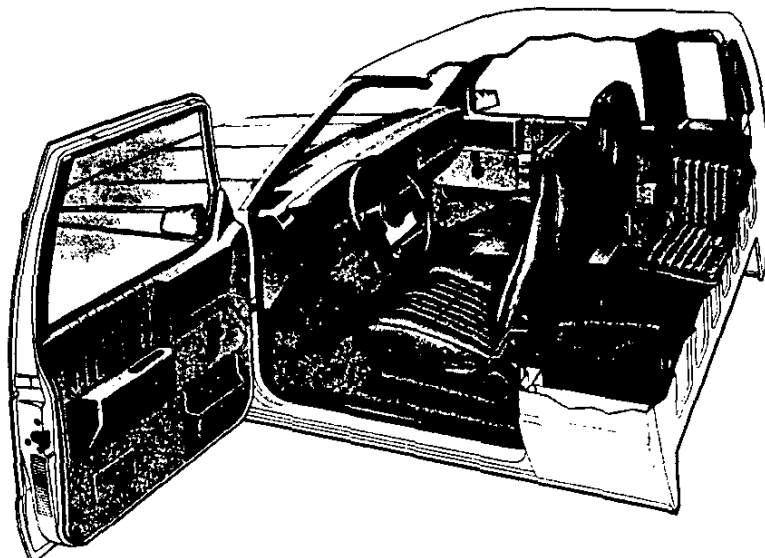
FRONT BUCKET SEATS (Custom Vinyl Seat Trim Shown)

This option consists of two high back bucket-type seats with foam padding and folding backrests with inertia latches. They are standard on Sport/Gypsy models and are available for all other models. A lockable color-keyed plastic center console with spacious stowage compartment is available when bucket seats are ordered on base, Durango/High Sierra, or Tahoe/Sierra Classic models. This console is included with the Sport/Gypsy Model Option. Reclining seat backs available on extended cab models and are included with Sport/Gypsy Model Option.

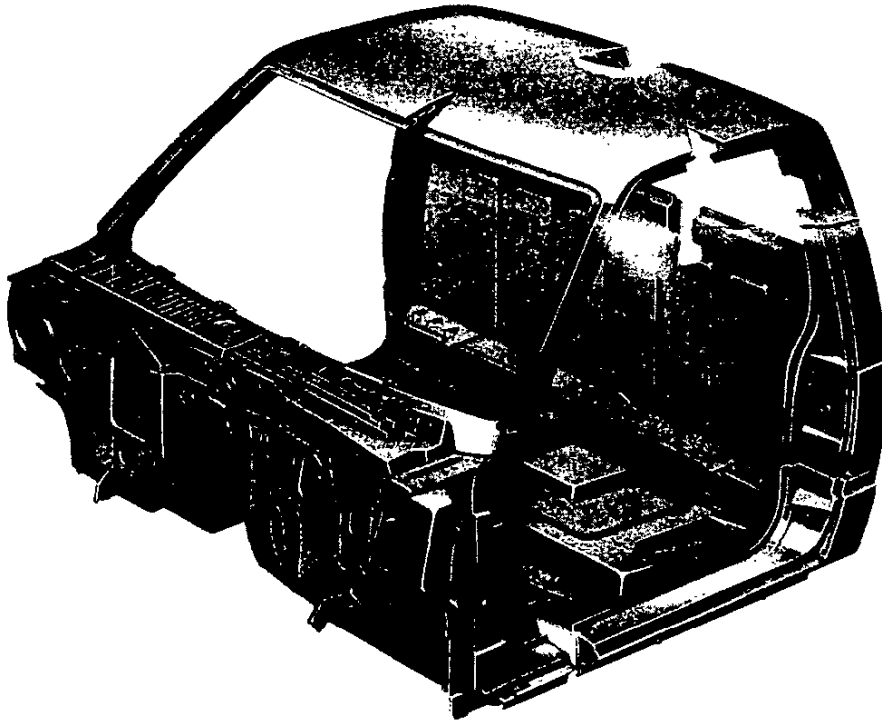


FOLDING JUMP SEATS

This option consists of two folding jump seats mounted on Extended Cab rear side-walls. They may be left folded for cargo carrying or unfolded to carry two additional passengers. Bucket seats are required when this option is ordered. Trim on these seats is always Custom Vinyl.



S-10/15 PICKUP 2- & 4-WHEEL DRIVE



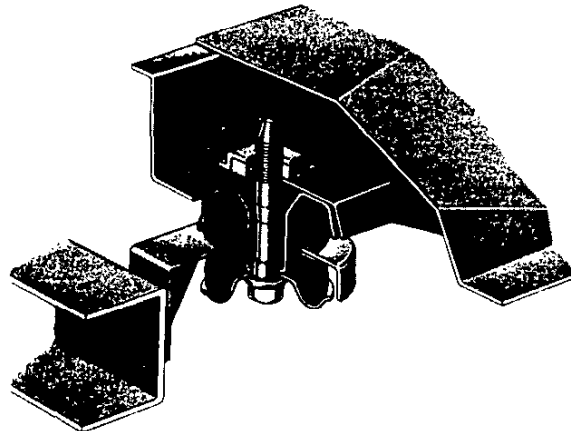
Cab Construction

Two cab configurations are used; the regular cab and the extended cab. Both are 2-door cabs, but the extended cab has approximately 14.6" of added space behind the 3 passenger seat. Provisions are made to enable the addition of 2 optional jump seats if desired. Both utilize all-steel, welded construction. A plenum chamber with high level, screened

air intake is incorporated in the front end structure for interior ventilation. Single-wall construction is utilized throughout the remainder of the cab except in the upper back panel area. A cathodic ELPO primer is used throughout and coated steel is used in most areas to reduce sheet metal corrosion. Body joints are filled with pumpable sealer. A 4-point mounting system is utilized for the cab.

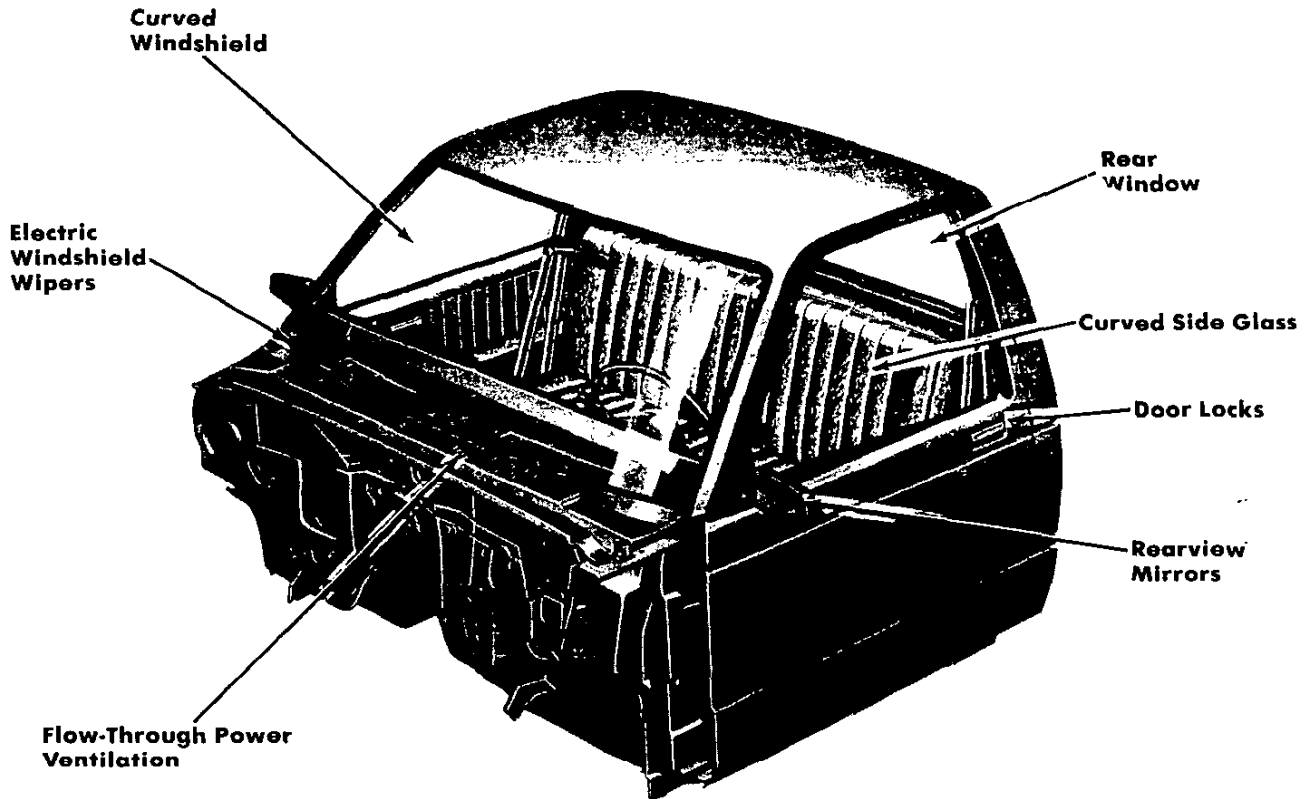
Cab Mountings

All mounts are the double rubber biscuit type.



S-10/15 PICKUP 2- & 4-WHEEL DRIVE

STANDARD CAB FEATURES



Curved Windshield—The large, one-piece windshield of laminated safety glass is urethane bonded into the windshield frame and has an area of approximately 1138.5 square inches for excellent visibility.

Curved Rear Window—The rear window is of solid tempered safety glass and is curved to prevent road reflections on the inside rear view mirror. It has a 617.5 square inch area.

Electric Windshield Wipers—High-capacity, 2-speed motor provides constant wiping action regardless of engine load or accelerator

position. Wipers have 16-inch blades. Wiper arms and the metal portions of the blades have a low gloss black finish. Electric washers with a 5.7-pint capacity reservoir are also standard. A "Fluidics" washer nozzle assures efficient washing action.

Curved Side Glass—Curved door windows are of solid tempered safety glass with an area of 409.5 square inches for each side.

Rearview Mirrors—Standard chrome exterior mirrors are of the fixed arm type with 6½" wide x 4" high adjustable aerodynamic

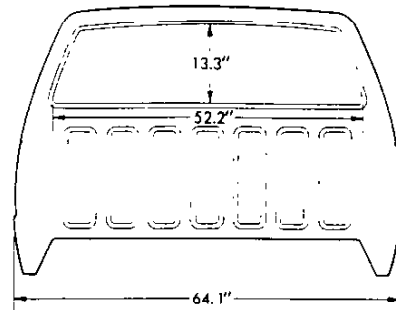
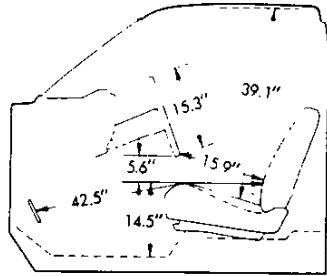
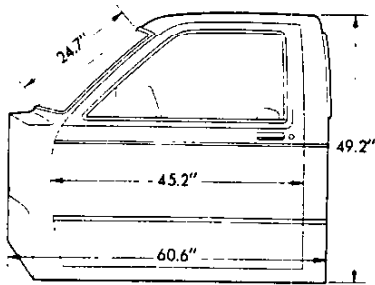
heads and a low gloss black finish. Both right-hand and left-hand units are provided, with convex glass used for the RH mirror.

Optional mirror combinations are also available. See the Optional Equipment listing.

Door Locks—All cab models include left & right hand key-operated (front) door locks as standard equipment. Actuation of inside lock levers prevents accidental door opening and provides keyless door locking when leaving the vehicle. Door lock key is separate from the ignition key for theft protection.

S-10/15 PICKUP 2- & 4-WHEEL DRIVE

CAB DIMENSIONS*



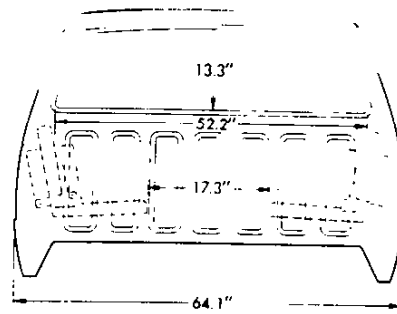
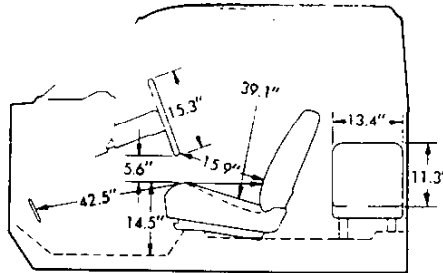
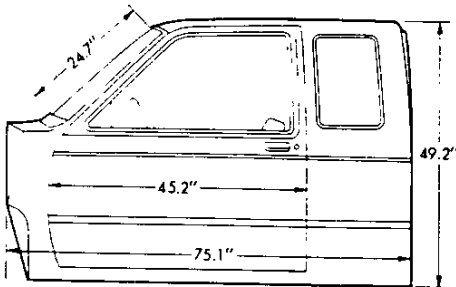
Glass Area (sq in)

Windshield 1138.5

Rear side windows (each side) 150.0

Front side door window (each side) 409.5

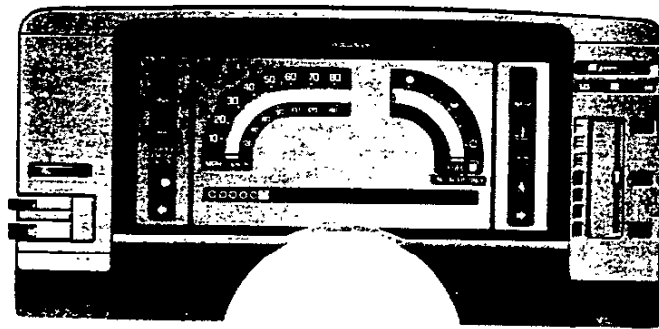
Rear window 617.5



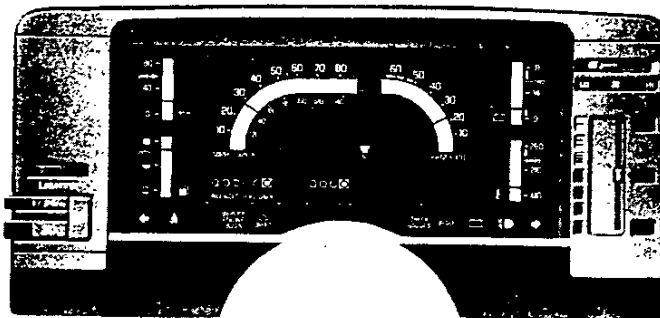
*All interior dimensions measured with front seat in rearmost position. Seat travel is 5"

INSTRUMENT CLUSTER

Standard Cluster with warning lights for engine temperature, generator, and oil pressure.



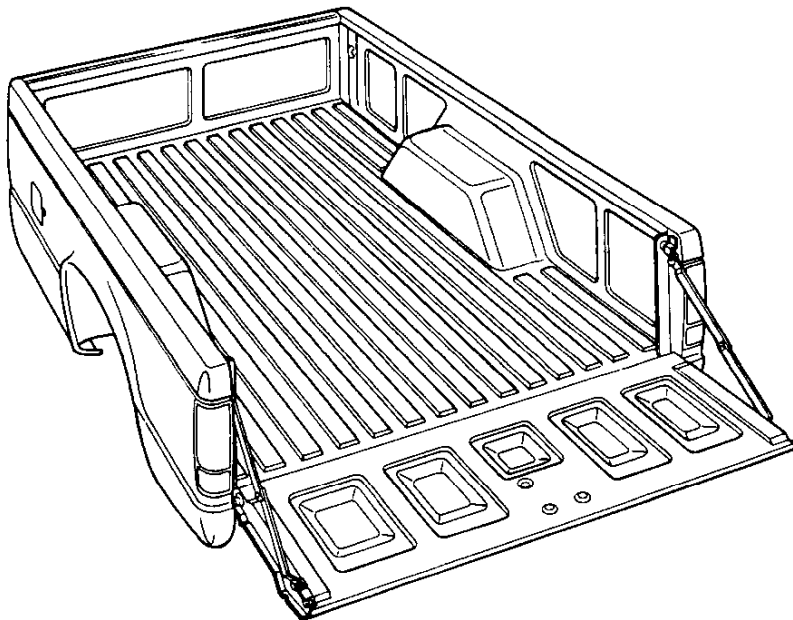
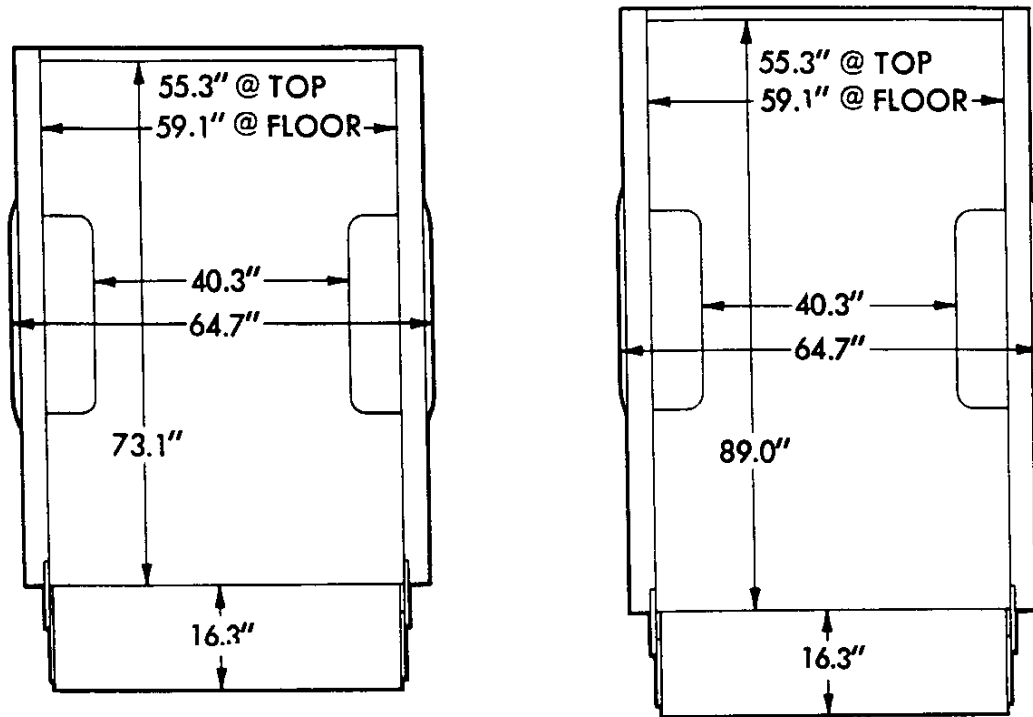
Optional Cluster (RPO Z53) with voltmeter, engine temperature gage, oil pressure gage and trip odometer. Included with Tachometer (RPO U16) and in Tahoe/Sierra Classic options (RPO YC2) and Sport/Gypsy options (RPO YC3) as illustrated (optional tachometer also shown in illustration.) Cluster faceplate for all models has textured, charcoal colored finish. When the optional tachometer is ordered it replaces the regular fuel gage, and another fuel gage is added.



S-10/15 PICKUP 2- & 4-WHEEL DRIVE PICKUP BOX

Body Ordering Code E63

DIMENSIONS



The all steel, welded pickup box is built in both 6- and 7.5-foot nominal lengths with approximate 35 and 43 cubic ft. capacities respectively. Integral skid strips are incorporated into the load floor. Vertical rear lamps with bright bezels are incorporated into the corner posts. Double-walled construction is used in the side panels and tailgate to prevent load dents from marring the appearance of the outer panels.

The ELPO electro-coating process is used to prime the completely assembled cargo box to assure that all surfaces of all components—even surfaces not visible—receive a coat of prime paint. Side outer panels and tailgate are fabricated of zinc coated steel and galvanized steel is used for platform panels and rear wheelhousings to provide additional corrosion protection.

A tight-fitting full-width tailgate holds such loads as grain and sand with minimal loss. It is operated by a mechanically actuated latch and retained in the horizontal position by hinged steel support straps. The tailgate latch features one-hand operation for easy opening and closing.

The vertical structural support welded into each corner of the pickup box has a round metal loop at the upper end to serve as a cargo tie-down.

S-10/15 PICKUP 2- & 4-WHEEL DRIVE

INTERIOR AND EXTERIOR COLOR AVAILABILITY CHART

Please Note: Below are the interior trim color and exterior paint combinations *recommended* by Chevrolet/GMC. The only available color code 1/color code 2 exterior color combinations are those shown in the chart below; however, any available interior trim color may be ordered with one of these exterior color combinations if that particular combination is desired by the customer.

WITH ZY1 PAINT—WITHOUT STRIPING

TRIM LEVEL Seat Type	Decor	INTERIOR COLORS				
		Blue	Carmine	Charcoal	Saddle Tan	
STANDARD INTERIOR	Std	VDD1	VRR1	VJJ1	VSS1	
Vinyl Bench Seat		LDD1	LRR1	LJJ1	LSS1	
Custom Cloth Bench Seat		XDD1	XRR1	XJJ1	XSS1	
Custom Vinyl Bench Seat		XDD4	XRR4	XJJ4	XSS4	
DURANGO/HIGH SIERRA	YC1	XDD1	XRR1	XJJ1	XSS1	
Custom Vinyl Bench Seat		LDD1	LRR1	LJJ1	LSS1	
Custom Cloth Bench Seat		XDD4	XRR4	XJJ4	XSS4	
Custom Vinyl High Back Bucket Seats		HDD4	HRR4	HJJ4	HSS4	
TAHOE/SIERRA CLASSIC	YC2	XDD1	XRR1	XJJ1	XSS1	
Custom Vinyl Bench Seat		LDD1	LRR1	LJJ1	LSS1	
Custom Cloth Bench Seat		XDD4	XRR4	XJJ4	XSS4	
Custom Vinyl High Back Bucket Seats		HDD4	HRR4	HJJ4	HSS4	
Special Custom Cloth High Back Bucket Seats					BSS4	
High Country Sheepskin High Back Bucket Seats				AJJ6	ASS6	
Leather High Back Reclining Bucket Seats (S/T 10653 only)						
EXTERIOR COLORS w/ZY1 PAINT	Color Code 1	Color Code 2	RECOMMENDED INTERIOR TRIM COLORS			
BLACK, MIDNIGHT	19	19				
BLACK, MIDNIGHT	19	19				
BLACK, MIDNIGHT	19	19				
BLUE, GALAXY (Metallic)	28	28				
BLUE, GALAXY (Metallic)	28	28				
BLUE, LIGHT (Metallic)	21	21				
BRONZE, INDIAN (Metallic)	66	66				
BRONZE, INDIAN (Metallic)	66	66				
EMERALD (Metallic)	44	44				
EMERALD (Metallic)	44	44				
GOLD, NEVADA (Metallic)	67	67				
GRAY, STEEL (Metallic)	90	90				
GRAY, STEEL (Metallic)	90	90				
GRAY, STEEL (Metallic)	90	90				
RED, APPLE	72	72				
RED, APPLE	72	72				
TAN, DOESKIN	61	61				
TAN, DOESKIN	61	61				
WHITE, FROST	12	12				
WHITE, FROST	12	12				
WHITE, FROST	12	12				
WHITE, FROST	12	12				

N A - Not Available

WITH D85 BODY STRIPING AND ZY1 PAINT

TRIM LEVEL Seat Type	Decor	INTERIOR COLORS											
		Blue	Carmine	Charcoal	Saddle Tan								
STANDARD INTERIOR	Std	VDD1	VRR1	VJJ1	VSS1								
Vinyl Bench Seat		LDD1	LRR1	LJJ1	LSS1								
Custom Cloth Bench Seat		XDD1	XRR1	XJJ1	XSS1								
Custom Vinyl Bench Seat		XDD4	XRR4	XJJ4	XSS4								
DURANGO/HIGH SIERRA	YC1	XDD1	XRR1	XJJ1	XSS1								
Custom Vinyl Bench Seat		LDD1	LRR1	LJJ1	LSS1								
Custom Cloth Bench Seat		XDD4	XRR4	XJJ4	XSS4								
Custom Vinyl High Back Bucket Seats		HDD4	HRR4	HJJ4	HSS4								
Special Custom Cloth High Back Bucket Seats (S/T 10653 only)													
EXTERIOR COLORS w/ZY1 PAINT	Color Code 1	Color Code 2	RECOMMENDED INTERIOR TRIM COLORS				D85 STRIPING CHART RECOMMENDED COMBINATIONS Additional stripe combinations are available except where N A is shown, provided the dealer orders D60 as verification (N A 884 YC2 or YC3)						
BLACK, MIDNIGHT	19	19					Black 19A	Blue 28A	Gold 67A	Gray 90A	Red 72A	Silver 17A	White 12A
BLACK, MIDNIGHT	19	19											
BLACK, MIDNIGHT	19	19											
BLUE, GALAXY (Metallic)	28	28											
BLUE, GALAXY (Metallic)	28	28											
BLUE, LIGHT (Metallic)	21	21											
BRONZE, INDIAN (Metallic)	66	66											
BRONZE, INDIAN (Metallic)	66	66											
EMERALD (Metallic)	44	44											
EMERALD (Metallic)	44	44											
GOLD, NEVADA (Metallic)	67	67											
GRAY, STEEL (Metallic)	90	90											
GRAY, STEEL (Metallic)	90	90											
GRAY, STEEL (Metallic)	90	90											
GRAY, STEEL (Metallic)	90	90											
RED, APPLE	72	72											
RED, APPLE	72	72											
TAN, DOESKIN	61	61											
TAN, DOESKIN	61	61											
WHITE, FROST	12	12											
WHITE, FROST	12	12											
WHITE, FROST	12	12											
WHITE, FROST	12	12											

N A - Not Available

S-10/15 PICKUP 2- & 4-WHEEL DRIVE INTERIOR AND EXTERIOR COLOR AVAILABILITY CHART WITH BODY STRIPING AND ZY6, ZY7 OR ZY8 PAINT

Please Note: Below are the interior trim color and exterior paint combinations *recommended* by Chevrolet/GMC. The only available color code 1/color code 2 exterior color combinations are those shown in the chart below; however, any available interior trim color may be ordered with one of these exterior color combinations if that particular combination is desired by the customer.

TRIM LEVEL Seat Type	Decor	INTERIOR COLORS			
		Blue	Carmine	Charcoal	Saddle Tan
STANDARD INTERIOR	Std	VDD1	VRR1	VJJ1	VSS1
Vinyl Bench Seat		LDD1	LRR1	LJJ1	LSS1
Custom Cloth Bench Seat		XDD1	XRR1	XJJ1	XSS1
Custom Vinyl Bench Seat		XDD4	XRR4	XJJ4	XSS4
DURANGO/HIGH SIERRA	YC1	XDD1	XRR1	XJJ1	XSS1
Custom Vinyl Bench Seat		LDD1	LRR1	LJJ1	LSS1
Custom Cloth Bench Seat		XDD4	XRR4	XJJ4	XSS4
Custom Vinyl High Back Bucket Seats		HDD4	HRR4	HJJ4	HSS4
TAHOE/SIERRA CLASSIC	YC2	XDD1	XRR1	XJJ1	XSS1
Custom Vinyl Bench Seat		LDD1	LRR1	LJJ1	LSS1
Custom Cloth Bench Seat		XDD4	XRR4	XJJ4	XSS4
Custom Vinyl High Back Bucket Seats		HDD4	HRR4	HJJ4	HSS4
Special Custom Cloth High Back Bucket Seats					BSS4
High Country Sheepskin High Back Bucket Seats				BSS4	
Leather High Back Reclining Bucket Seats (S/T 10653 only)			AJJ6	ASS6	
SPORT/GYPSY (Reqs ZY6 or ZY7 Paint)	YC3			SJJ4	SSS4
Sport Cloth High Back Bucket Seats					BSS4
High Country Sheepskin High Back Bucket Seats				AJJ6	ASS6
Leather High Back Reclining Bucket Seats (S/T 10653 only)					

EXTERIOR COLORS w/ZY6, ZY7 or ZY8 PAINT	Color Code 1	Color Code 2	RECOMMENDED INTERIOR TRIM COLORS				STRIPES COLORS - ZY7 ONLY (Stripe Colors Cannot be Changed) (N/A ZY8) (With ZY6 Paint Refer to Page 6 for Striping Chart)													
			Blue	Carmine	Charcoal	Saddle Tan	Black	Blue, Dark	Gold	Red	Silver	White								
BLACK, MIDNIGHT																				
Gold, Nevada (Metallic)	19	67				X				X										
Red, Apple	19	72		X	X						X									
Silver (Metallic)	19	17		X	X									X						
White, Frost	19	12		X	X															X
BLUE, GALAXY (Metallic)																				
Gold, Nevada (Metallic)	28	67	X				X				X									
Silver (Metallic)	28	17	X							X										
White, Frost	28	12	X																	X
BLUE, LIGHT (Metallic)																				
Black, Midnight	21	19	X		X			X												
Blue, Galaxy (Metallic)	21	28	X						X											
Silver (Metallic)	21	17	X		X														X	
White, Frost	21	12	X																	X
BRONZE, INDIAN (Metallic)																				
Gold, Nevada (Metallic)	66	67				X					X									
Silver (Metallic)	66	17			X									X						
White, Frost	66	12				X														X
EMERALD (Metallic)																				
Gold, Nevada (Metallic)	44	67				X					X									
White, Frost	44	12			X	X														X
GOLD, NEVADA (Metallic)																				
Black, Midnight	67	19			X	X		X												
White, Frost	67	12			X	X		X												X
GRAY, STEEL (Metallic)																				
Black, Midnight	90	19		X	X			X												
Blue, Galaxy (Metallic)	90	28	X		X				X											
Red, Apple	90	72		X	X								X							
Silver (Metallic)	90	17	X	X	X									X						
White, Frost	90	12	X		X															X
RED, APPLE																				
Black, Midnight	72	19		X	X			X												
Silver (Metallic)	72	17		X	X									X						
White, Frost	72	12		X																X
TAN, DOESKIN																				
Black, Midnight	61	19			X			X												
Blue, Galaxy (Metallic)	61	28	X						X											
Red, Apple	61	72		X									X							
White, Frost	61	12			X															X
WHITE, FROST																				
Black, Midnight	12	19		X	X			X												
Blue, Galaxy (Metallic)	12	28	X						X											
Gold, Nevada (Metallic)	12	67			X	X				X										
Red, Apple	12	72		X	X								X							
Silver (Metallic)	12	17	X	X	X									X						

S-10/15 PICKUP 2- & 4-WHEEL DRIVE

INTERIOR AND EXTERIOR COLOR AVAILABILITY CHART

WITH D90 SUNSHINE STRIPING

Please Note: Below are the interior trim color and exterior paint combinations recommended by Chevrolet/GMC. The only available color code 1/color code 2 exterior color combinations are those shown in the chart below; however, any available interior trim color may be ordered with one of these exterior color combinations if that particular combination is desired by the customer.

TRIM LEVEL Seat Type	Decor	INTERIOR COLORS			
		Blue	Carmine	Charcoal	Saddle Tan
STANDARD INTERIOR Vinyl Bench Seat	Std.	VDD1	VRR1	VJJ1	VSS1
Custom Cloth Bench Seat		LDD1	LRR1	LJJ1	LSS1
Custom Vinyl Bench Seat		XDD1	XRR1	XJJ1	XSS1
Custom Vinyl High Back Bucket Seats		XDD4	XRR4	XJJ4	XSS4
DURANGO/HIGH SIERRA Custom Vinyl Bench Seat	YC1	XDD1	XRR1	XJJ1	XSS1
Custom Cloth Bench Seat		LDD1	LRR1	LJJ1	LSS1
Custom Vinyl High Back Bucket Seats		XDD4	XRR4	XJJ4	XSS4
Special Custom Cloth High Back Bucket Seats (S/T10653 only)		HDD4	HRR4	HJJ4	HSS4
TAHOE/SIERRA CLASSIC Custom Vinyl Bench Seat	YC2	XDD1	XRR1	XJJ1	XSS1
Custom Cloth Bench Seat		LDD1	LRR1	LJJ1	LSS1
Custom Vinyl High Back Bucket Seats		XDD4	XRR4	XJJ4	XSS4
Special Custom Cloth High Back Bucket Seats		HDD4	HRR4	HJJ4	HSS4
High Country Sheepskin High Back Bucket Seats					BSS4
Leather High Back Reclining Bucket Seats (S/T10653 only)				AJJ6	ASS6
SPORT/GYPSY (Reqs ZY6 Paint) Sport Cloth High Back Bucket Seats	YC3			SJJ4	SSS4
High Country Sheepskin High Back Bucket Seats					BSS4
Leather High Back Reclining Bucket Seats (S/T10653 only)				AJJ6	ASS6

EXTERIOR COLORS w/ZY1 PAINT	Color Code 1	Color Code 2	RECOMMENDED INTERIOR TRIM COLORS				D90 STRIPING CHART RECOMMENDED COMBINATIONS				
			Black 19A	Gold 67A	Silver 17A	White 12A	Gray 90A	Stripe color options must be specified on all ZY1 Solid Paint applications. Stripe color options are not available where N/A appears.			
BLACK, MIDNIGHT	19	19	N/A	N/A	X	N/A	N/A	X	X	X	X
BLACK, MIDNIGHT	19	19		X	N/A	N/A	N/A	N/A	X	X	X
BLACK, MIDNIGHT	19	19	N/A	N/A	N/A	X	N/A	X	N/A	X	N/A
BLUE, GALAXY (Metallic)	28	28	X		X	X	N/A	N/A	X	X	N/A
BLUE, LIGHT (Metallic)	21	21	X		X		X	N/A	N/A	X	N/A
BRONZE, INDIAN (Metallic)	66	66			X	N/A	N/A	X	X	X	N/A
BRONZE, INDIAN (Metallic)	66	66	N/A	N/A	N/A	X	N/A	X	N/A	X	N/A
EMERALD (Metallic)	44	44			X	X	N/A	X	N/A	N/A	N/A
GOLD, NEVADA (Metallic)	67	67			X	X	X	N/A	N/A	N/A	N/A
GRAY, STEEL (Metallic)	90	90	X	X	X		X	N/A	N/A	X	N/A
RED, APPLE	72	72		X	X		X	N/A	X	X	X
TAN, DOESKIN	61	61			X	X	X	N/A	N/A	X	X
WHITE, FROST	12	12	X	X	X	N/A	X	N/A	X	N/A	X
WHITE, FROST	12	12	N/A	N/A	N/A	X	X	N/A	N/A	N/A	N/A

w/ZY6 PAINT	STRIPE COLORS (Stripe colors cannot be changed)			
	Black	Gold	Gray	White
BLACK, MIDNIGHT				
Gold, Nevada (Metallic)				
Silver (Metallic)				
Red, Apple				
White, Frost				
GOLD, NEVADA (Metallic)				
Black, Midnight				
GRAY, STEEL (Metallic)				
Black, Midnight				
Blue, Galaxy (Metallic)				
Red, Apple				
Silver (Metallic)				
White, Frost				
WHITE, FROST				
Black, Midnight				
Blue, Galaxy (Metallic)				
Gold, Nevada (Metallic)				
Silver (Metallic)				
Red, Apple				

N/A-Not Available

S-10/15 PICKUP 2- & 4-WHEEL DRIVE

INTERIOR AND EXTERIOR COLOR AVAILABILITY CHART

WITH BODY STRIPING AND ZY6, ZY7 OR ZY8 PAINT

Please Note: Below are the interior trim color and exterior paint combinations recommended by Chevrolet/GMC. The only available color code 1/color code 2 exterior color combinations are those shown in the chart below, however, any available interior trim color may be ordered with one of these exterior color combinations if that particular combination is desired by the customer.

TRIM LEVEL Seat Type	Decor	INTERIOR COLORS			
		Blue	Carmine	Charcoal	Saddle Tan
STANDARD INTERIOR	Std	VDD1	VRR1	VJJ1	VSS1
Vinyl Bench Seat		LDD1	LRR1	LJJ1	LSS1
Custom Cloth Bench Seat		XDD1	XRR1	XJJ1	XSS1
Custom Vinyl High Back Bucket Seats		XDD4	XRR4	XJJ4	XSS4
DURANGO/HIGH SIERRA	YC1	XDD1	XRR1	XJJ1	XSS1
Custom Vinyl Bench Seat		LDD1	LRR1	LJJ1	LSS1
Custom Cloth Bench Seat		XDD4	XRR4	XJJ4	XSS4
Custom Vinyl High Back Bucket Seats		HDD4	HRR4	HJJ4	HSS4
Special Custom Cloth High Back Bucket Seats (S/T10653 only)					
TAHOE/SIERRA CLASSIC	YC2	XDD1	XRR1	XJJ1	XSS1
Custom Vinyl Bench Seat		LDD1	LRR1	LJJ1	LSS1
Custom Cloth Bench Seat		XDD4	XRR4	XJJ4	XSS4
Custom Vinyl High Back Bucket Seats		HDD4	HRR4	HJJ4	HSS4
Special Custom Cloth High Back Bucket Seats					
High Country Sheepskin High Back Bucket Seats					BSS4
Leather High Back Reclining Bucket Seats (S/T10653 only)			AJJ6	ASS6	
SPORT/GYPSY (Reqs ZY6 or ZY7 Paint)	YC3			SJJ4	SSS4
Sport Cloth High Back Bucket Seats					BSS4
High Country Sheepskin High Back Bucket Seats				AJJ6	ASS6
Leather High Back Reclining Bucket Seats (S/T10653 only)					

EXTERIOR COLORS w/ ZY6, ZY7 or ZY8 PAINT	Color Code 1	Color Code 2	RECOMMENDED INTERIOR TRIM COLORS	STRIPE COLORS - ZY7 ONLY (Stripe Colors Cannot be Changed) (N/A ZY8) (With ZY6 Paint Refer to Page 6 for Striping Chart)						
				Black	Blue Dark	Gold	Red	Silver	White	
BLACK, MIDNIGHT										
Gold, Nevada (Metallic)	19	67			X		X			
Red, Apple	19	72		X	X			X		
Silver (Metallic)	19	17		X	X				X	
White, Frost	19	12		X	X					X
BLUE, GALAXY (Metallic)										
Gold, Nevada (Metallic)	28	67	X			X		X		
Silver (Metallic)	28	17	X				X			
White, Frost	28	12	X							X
BLUE, LIGHT (Metallic)										
Black, Midnight	21	19	X		X		X			
Blue, Galaxy (Metallic)	21	28	X				X			
Silver (Metallic)	21	17	X		X				X	
White, Frost	21	12	X						X	X
BRONZE, INDIAN (Metallic)										
Gold, Nevada (Metallic)	66	67			X			X		
Silver (Metallic)	66	17			X				X	
White, Frost	66	12			X					X
EMERALD (Metallic)										
Gold, Nevada (Metallic)	44	67			X			X		
White, Frost	44	12			X	X				X
GOLD, NEVADA (Metallic)										
Black, Midnight	67	19		X	X	X				
White, Frost	67	12			X					X
GRAY, STEEL (Metallic)										
Black, Midnight	90	19		X	X		X			
Blue, Galaxy (Metallic)	90	28	X		X			X		
Red, Apple	90	72		X	X				X	
Silver (Metallic)	90	17	X	X	X				X	
White, Frost	90	12	X		X					X
RED, APPLE										
Black, Midnight	72	19		X	X		X			
Silver (Metallic)	72	17		X	X				X	
White, Frost	72	12		X						X
TAN, DOESKIN										
Black, Midnight	61	19			X		X			
Blue, Galaxy (Metallic)	61	28	X				X			
Red, Apple	61	72		X				X		
White, Frost	61	12			X					X
WHITE, FROST										
Black, Midnight	12	19		X	X		X			
Blue, Galaxy (Metallic)	12	28	X				X			
Gold, Nevada (Metallic)	12	67			X	X		X		
Red, Apple	12	72		X	X				X	
Silver (Metallic)	12	17	X	X	X				X	



S-10/15 PICKUP 2- & 4-WHEEL DRIVE INTERIOR AND EXTERIOR COLOR AVAILABILITY CHART WITH D98 RALLY STRIPING

Please Note: Below are the interior trim color and exterior paint combinations recommended by Chevrolet/GMC. The only available color code 1/color code 2 exterior color combinations are those shown in the chart below; however, any available interior trim color may be ordered with one of these exterior color combinations if that particular combination is desired by the customer.

TRIM LEVEL Seat Type	Decor	INTERIOR COLORS			
		Blue	Carmine	Charcoal	Saddle Tan
STANDARD INTERIOR Vinyl Bench Seat	Std.	VDD1	VRR1	VJJ1	VSS1
Custom Cloth Bench Seat		LDD1	LRR1	LJJ1	LSS1
Custom Vinyl Bench Seat		XDD1	XRR1	XJJ1	XSS1
Custom Vinyl High Back Bucket Seats		XDD4	XRR4	XJJ4	XSS4
DURANGO/HIGH SIERRA Custom Vinyl Bench Seat	YC1	XDD1	XRR1	XJJ1	XSS1
Custom Cloth Bench Seat		LDD1	LRR1	LJJ1	LSS1
Custom Vinyl High Back Bucket Seats		XDD4	XRR4	XJJ4	XSS4
Special Custom Cloth High Back Bucket Seats (S/T10653 only)		HDD4	HRR4	HJJ4	HSS4
TAHOE/SIERRA CLASSIC Custom Vinyl Bench Seat	YC2	XDD1	XRR1	XJJ1	XSS1
Custom Cloth Bench Seat		LDD1	LRR1	LJJ1	LSS1
Custom Vinyl High Back Bucket Seats		XDD4	XRR4	XJJ4	XSS4
Special Custom Cloth High Back Bucket Seats		HDD4	HRR4	HJJ4	HSS4
High Country Sheepskin High Back Bucket Seats					BSS4
Leather High Back Reclining Bucket Seats (S/T10653 only)			AJJ6	ASS6	

D98 STRIPING CHART RECOMMENDED COMBINATIONS						
Stripe color options must be specified on all ZY1 Solid Paint applications. Additional stripe combinations are available except where N/A is shown provided the dealer orders (D98) as verification.						
Black	Dk. Blue	Gold	Red	Silver	White	
19A	28A	67A	72A	17A	12A	

EXTERIOR COLORS w/ZY1 PAINT	Color Code 1	Color Code 2	RECOMMENDED INTERIOR TRIM COLORS				STRIPE COLORS					
			Blue	Carmine	Charcoal	Saddle Tan	Black 19A	Dk. Blue 28A	Gold 67A	Red 72A	Silver 17A	White 12A
BLACK, MIDNIGHT	19	19			X		N/A	N/A			X	
BLACK, MIDNIGHT	19	19				X	N/A	N/A	X			
BLACK, MIDNIGHT	19	19		X			N/A	N/A		X		
BLUE, GALAXY (Metallic)	28	28	X		X		N/A	N/A		N/A	X	
BLUE, GALAXY (Metallic)	28	28				X	N/A	N/A	X	N/A		
BLUE, LIGHT (Metallic)	21	21	X		X			X	N/A	N/A		
BRONZE, INDIAN (Metallic)	66	66			X		N/A	N/A	X	N/A		
BRONZE, INDIAN (Metallic)	66	66				X	N/A	N/A	X	N/A	N/A	
EMERALD (Metallic)	44	44			X	X	N/A	N/A	X	N/A	N/A	N/A
GOLD, NEVADA (Metallic)	67	67			X	X	X	N/A	N/A	N/A	N/A	
GRAY, STEEL (Metallic)	90	90			X		X		N/A		N/A	
GRAY, STEEL (Metallic)	90	90	X					X	N/A		N/A	
GRAY, STEEL (Metallic)	90	90		X					N/A	X	N/A	
RED, APPLE	72	72			X		X	N/A		N/A		
RED, APPLE	72	72		X				N/A		N/A	X	
TAN, DOESKIN	61	61			X		X	N/A	N/A	N/A	N/A	N/A
TAN, DOESKIN	61	61				X	N/A	N/A	N/A	N/A	N/A	X
WHITE, FROST	12	12			X		X					N/A
WHITE, FROST	12	12	X					X				N/A
WHITE, FROST	12	12				X			X			N/A
WHITE, FROST	12	12		X						X		N/A

N/A-Not Available

S-10/15 PICKUP 2- & 4-WHEEL DRIVE

STRIPING CHART FOR ZY6 CUSTOM TWO-TONE

INTERIOR TRIM COLOR			BLUE	CARMINE	CHARCOAL	SADDLE TAN
EXTERIOR PAINT COLOR	Color Code 1	Color Code 2	STRIPE COLORS			
BLACK, MIDNIGHT/Gold, Nevada (Met)	19	67	*Orange/Yellow	*Orange/Yellow	Orange/Yellow	Orange/Yellow
BLACK, MIDNIGHT/Red, Apple	19	72	*Silver	Silver	Silver	*Silver
BLACK, MIDNIGHT/Silver (Met)	19	17	*Blue	Blue	Blue	*Red
BLACK, MIDNIGHT/White, Frost	19	12	*Blue	Red	Red	*Gold
BLUE, GALAXY (MET)/Gold, Nevada (Met)	28	67	Orange/Yellow	*Orange/Yellow	*Orange/Yellow	Orange/Yellow
BLUE, GALAXY (MET)/Silver (Met)	28	17	Blue	*Red	*Blue	*Blue
BLUE, GALAXY (MET)/White, Frost	28	12	Blue	*Red	*Blue	*Blue
BLUE, LIGHT (MET)/Black, Midnight	21	19	Blue	*Blue	Blue	*Blue
BLUE, LIGHT (MET)/Blue, Galaxy (Met)	21	28	Blue	*Silver	*Silver	*Blue
BLUE, LIGHT (MET)/Silver (Met)	21	17	Blue	*Blue	Blue	*Blue
BLUE, LIGHT (MET)/White, Frost	21	12	Blue	*Red	*Blue	*Blue
BRONZE, INDIAN (MET)/Gold, Nevada (Met)	66	67	*Orange/Yellow	*Orange/Yellow	*Orange/Yellow	Orange/Yellow
BRONZE, INDIAN (MET)/Silver (Met)	66	17	*Orange/Yellow	*Orange/Yellow	Orange/Yellow	Orange/Yellow
BRONZE, INDIAN (MET)/White, Frost	66	12	*Orange/Yellow	*Orange/Yellow	Orange/Yellow	Orange/Yellow
EMERALD (MET)/Gold, Nevada (Met)	44	67	*Gold	*Gold	Gold	Gold
EMERALD (MET)/White, Frost	44	12	*Gold	*Gold	Gold	Gold
GOLD, NEVADA (MET)/Black, Midnight	67	19	*Gold	*Gold	*Gold	Gold
GOLD, NEVADA (MET)/White, Frost	67	12	*Orange/Yellow	*Gold	Orange/Yellow	Gold
GRAY, STEEL (MET)/Black, Midnight	90	19	*Blue	Red	Red	*Silver
GRAY, STEEL (MET)/Blue, Galaxy (Met)	90	28	Blue	*Silver	Silver	*Silver
GRAY, STEEL (MET)/Red, Apple	90	72	*Silver	Silver	Silver	*Silver
GRAY, STEEL (MET)/Silver (Met)	90	17	Blue	Red	Red	*Red
GRAY, STEEL (MET)/White, Frost	90	12	Blue	*Red	Blue	Blue
RED, APPLE/Black, Midnight	72	19	*Silver	Red	Silver	*Red
RED, APPLE/Silver (Met)	72	17	*Red	Red	Red	*Red
RED, APPLE/White, Frost	72	12	*Silver	Silver	*Silver	*Gold
TAN, DOESKIN/Black, Midnight	61	19	*Orange/Yellow	*Orange/Yellow	Orange/Yellow	*Orange/Yellow
TAN, DOESKIN/Blue, Galaxy (Met)	61	28	Blue	*Blue	*Blue	*Blue
TAN, DOESKIN/Red, Apple	61	72	*Red	Red	*Red	*Red
TAN, DOESKIN/White, Frost	61	12	*Red	*Red	Red	*Red
WHITE, FROST/Black, Midnight	12	19	*Blue	Red	Red	*Gold
WHITE, FROST/Blue, Galaxy (Met)	12	28	Blue	*Blue	*Blue	*Blue
WHITE, FROST/Gold, Nevada (Met)	12	67	*Orange/Yellow	*Orange/Yellow	Orange/Yellow	Orange/Yellow
WHITE, FROST/Red, Apple	12	72	*Silver	Silver	Silver	*Gold
WHITE, FROST/Silver (Met)	12	17	Blue	Red	Red	*Red

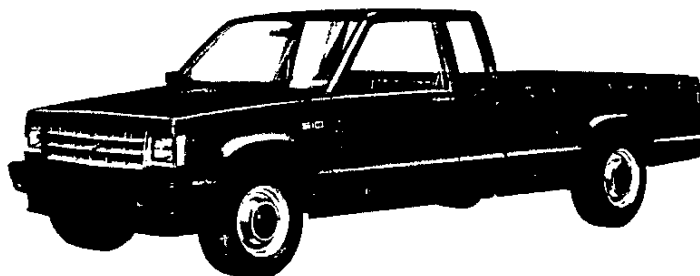
*Stripe color/trim color combination available but not recommended.

S-10/15 PICKUP 2- & 4-WHEEL DRIVE SOLID AND TWO-TONE* EXTERIOR COLOR COMBINATIONS

The application of paint for solid and two-tone exterior color combinations is shown below.

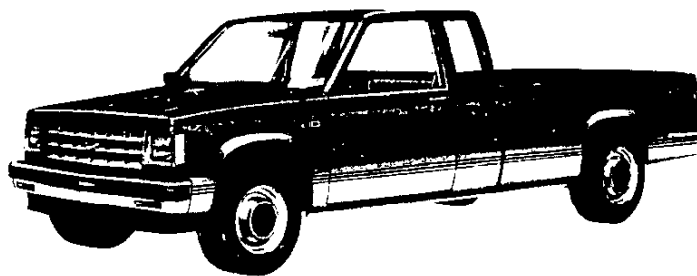
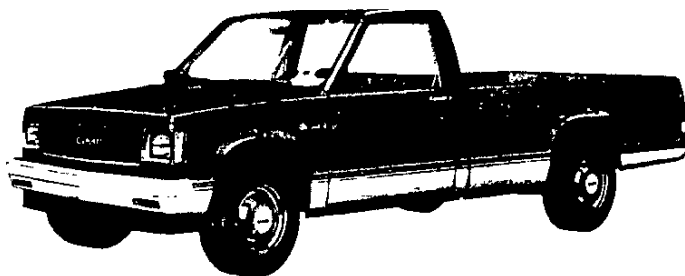
SOLID COLOR

Solid paint (ZY1) is standard on all models (except Sport/Gypsy). All painted areas of the cab, front end sheet metal, and box are the same color. Tailgate lettering for base and Durango/High Sierra models is silver when Galaxy Blue, Indian Bronze, Midnight Black, or Apple Red exterior colors are specified and black for all other exterior colors.



SPORT TWO-TONE

Sport two-tone paint (ZY7), which provides a lower accent two-tone scheme, is available on base, Durango/High Sierra and Tahoe/Sierra Classic models, and is included when the Sport/Gypsy Model Option (YC3) is ordered (unless ZY6 Custom two-tone is ordered). When ordered on base models, Painted Front Bumper (VT3) or Chromed Front Bumper (VG3) must be ordered. A wide, four stripe decal is included on base and Durango/High Sierra models, and is applied below the lower styling crease lines. The decal color matches the color code 2 paint choice, and is applied over the paint break line in such a way that the color code 1 color paint shows through the clear areas to contrast with the decal colors. The color code 1 color choice is applied to the areas above the bottom stripe of the decal, and the color code 2 color is applied to the areas below the decal. RPO B84 Body Side Moldings may be ordered with ZY7 on base and Durango/High Sierra models, if desired (at extra cost), and will replace the striping decal. Tailgate lettering for base and Durango/High Sierra models is silver when Galaxy Blue, Indian Bronze, Midnight Black, or Apple Red exterior colors are specified and black for all other exterior colors.



*Optional at extra cost

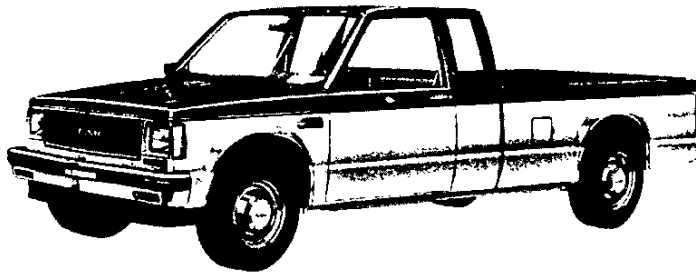
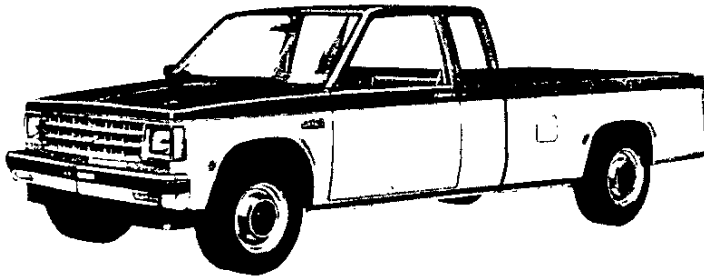
S-10/15 PICKUP 2- & 4-WHEEL DRIVE

SOLID AND TWO-TONE* EXTERIOR COLOR COMBINATIONS

The application of paint for solid and two-tone exterior color combinations is shown below.

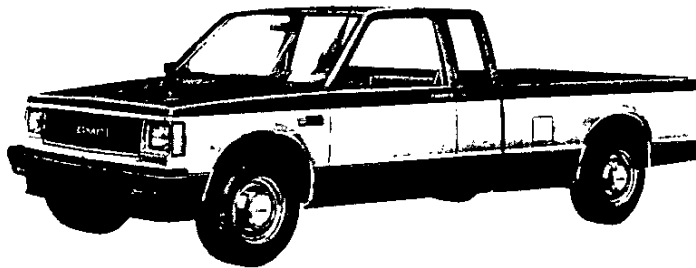
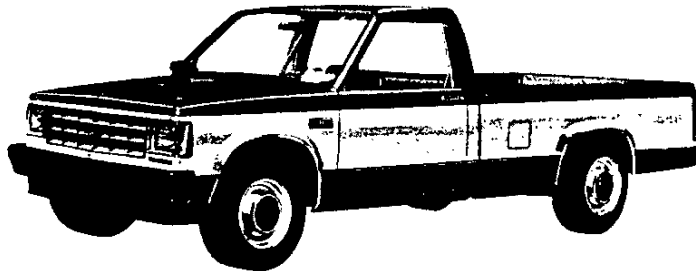
CUSTOM TWO-TONE

Custom two-tone paint (ZY6) is available on all models. When ordered on base models, Painted Front Bumper (VT3) or Chromed Front Bumper (VG3) must be ordered. The areas above the belt styling crease line are painted the color code 1 paint color. The areas below that line are painted the color code 2 color. A color-keyed decal stripe is applied at the belt styling crease line just below the paint break (See color stripe chart on page O). Tailgate lettering for base and Durango/High Sierra models is silver when Galaxy Blue, Indian Bronze, Midnight Black, or Apple Red color code 2 exterior colors are specified and black for all other colors.



SPECIAL TWO-TONE

Special two-tone paint (ZY8), which provides a mid-accent two-tone scheme, is available on base, Durango/High Sierra and Tahoe/Sierra Classic models. When ordered on base models, Painted Front Bumper (VT3) or Chromed Front Bumper (VG3) must be ordered. B84 body side and wheel opening moldings are included (except on Tahoe/Sierra Classic models where already included) which are applied below the lower styling crease lines. The areas below the molding and above the belt styling crease line are painted the color code 1 paint color. The areas between the molding and the belt styling crease line are painted the color code 2 color. Tailgate lettering for base and Durango/High Sierra models is silver when Galaxy Blue, Indian Bronze, Midnight Black, or Apple Red color code 2 exterior colors are specified and black for all other colors.



*Optional at extra cost

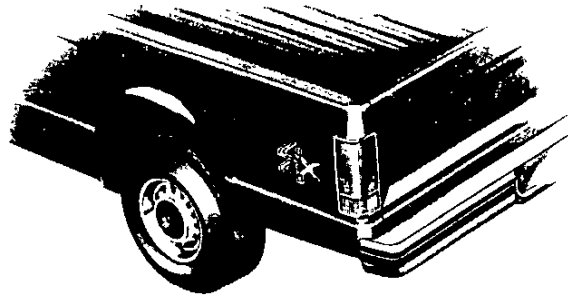
S-10/15 PICKUP 2- & 4-WHEEL DRIVE

EXTERIOR DECOR STRIPING PACKAGES

4x4 I.D. EXTERIOR DECOR

RPO YJ3 4x4 I.D. Exterior Decor.

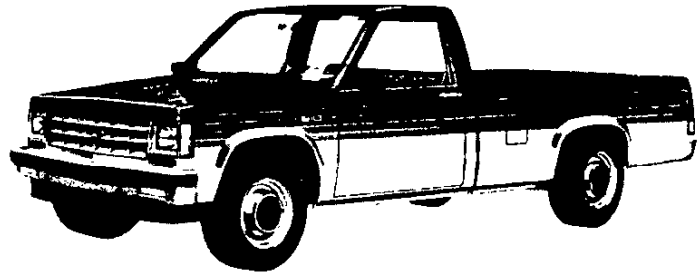
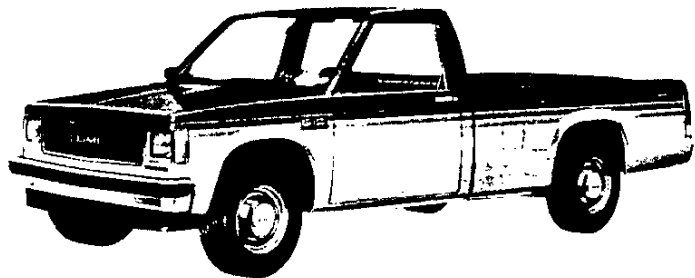
This package consists of tri-colored 4x4 decals applied to the upper rear corner of each side of the pickup box. It is available on all 4x4 S-10 pickup models. The standard 4x4 emblem located on the B pillar is deleted. Not available when RPO D90 Sunshine Striping is ordered.



SUNSHINE STRIPING

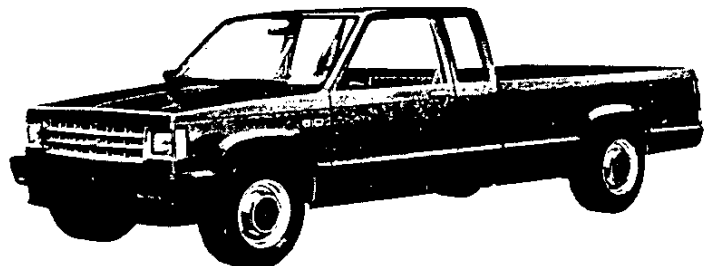
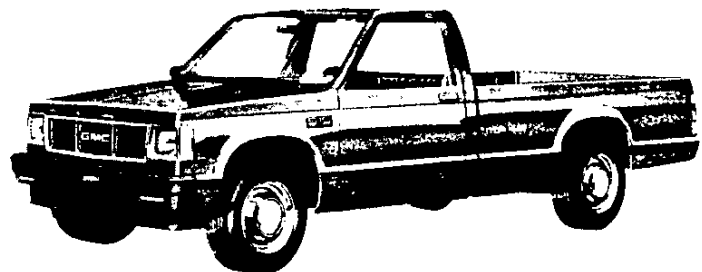
RPO D90 Sunshine Striping.

Sunshine Striping consists of 4 bold stripes along the full length of the vehicle and across the tailgate. The stripes are available on all S-10/15 pickup models in four colors to contrast or complement the exterior paint color choice. See the Interior and Exterior Color Availability Chart headed: With D90 Sunshine Striping for available combinations. The stripes vary in color density; the top stripe is completely opaque and each of the three remaining stripes is less opaque than the one above it, allowing the exterior paint color to show through more and more in each succeeding stripe until the bottom stripe actually has just a hint of color in it, creating a very dramatic effect. Sunshine Striping is available with ZY1 solid paint or with ZY6 Custom Two-Tone paint. When ordered with ZY6, the top stripe color exactly matches the color code 1 color choice. Not available with B84 Body Side Moldings or with YJ3 4x4 I.D. decals. Wheel opening moldings (either B74 Black Plastic or B96 Bright Aluminum) YC2 Tahoe/Sierra Classic or YC3 Sport/Gypsy must be ordered.



OPTIONAL STRIPING

Optional Striping is available on S-10/15 pickup models only when ZY1 Solid Paint is ordered. The striping is the same as that included with ZY7 Sport Two-Tone Paint, and consists of 4 decal stripes applied below the lower styling crease lines. The striping is available in 6 colors to contrast or complement the exterior paint color. See the Interior and Exterior Color Availability Chart headed: Without D90 Sunshine Striping for available combinations. Not available with B84 Body Side and Wheel Opening Moldings or YC3 Sport/Gypsy Equipment.



NOTES