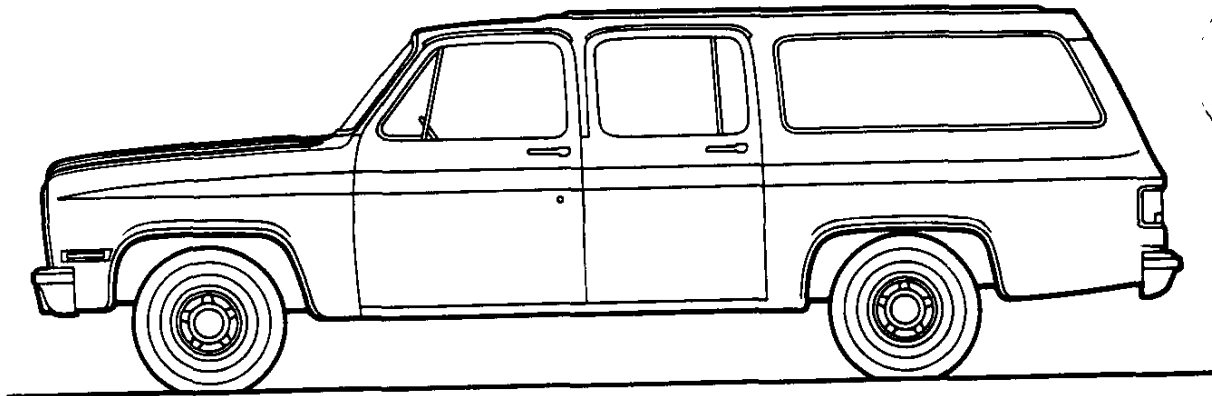




R/V SUBURBAN

SUBURBAN MODEL SELECTOR



SERIES	MODEL NUMBER	BODY ORDERING CODE			
		GASOLINE MODELS		DIESEL MODELS	
		PANEL REAR DOORS	TAILGATE	PANEL REAR DOORS	TAILGATE
R10/1500	R10906	ZW9	E55	ZW9/B3J	E55/B3J
R20/2500	R20906	ZW9	E55	ZW9/B3J	E55/B3J
V10/1500 (4X4)	V10906	ZW9	E55	ZW9/B3J	E55/B3J
V20/2500 (4X4)	V20906	ZW9	E55	ZW9/B3J	E55/B3J

GASOLINE

R/V SUBURBAN—2-Wheel Drive

STANDARD SPECIFICATIONS

(See Gray Tab Section for Specification Details)

Series	R10/1500	R20/2500
Engine	5.7 Liter, 350 EFI V8	
Base Equip.	—	
Clutch	12", 150 sq. in.	
Air Filter	Oiled-paper Element	
Oil Filter	Throwaway Type	
Exhaust System	*Single; Aluminized	**Single; Stainless Steel
Emission Control Systems	See Engine & Cooling Section for specific model applications	
Suspension, Front	Independent; Coil Springs	
Capacity	3250 lb.	3800 lb.
Springs @ Ground	1625 lb. ea.	1900 lb. ea.
Shock Absorbers	25mm dia.	32mm dia.
Stabilizer Bar	1.06" dia.	1.06" dia.
Suspension, Rear	Salisbury Axle; Hypoid Drive; Two-stage Multi-leaf Springs	
Axle Capacity	4000 lb.	6000 lb.
Axle Ratio	2.73	3.42
Springs @ Ground	2000 lb. ea.	3000 lb. ea.
Shock Absorbers	25mm dia.	32mm dia.
Brakes	Hydraulic; Self-adjusting	
Front	Disc; 11.86" Rotor	Disc; 12.5" Rotor
Rear	Drum; 11.15" x 2.75"	Drum; 13.0" x 2.5"
Booster	Dual Diaphragm	
Parking	Cable to Rear Wheels	
Electrical	12 Volt; Negative Ground	
Battery—Freedom Type	525 CCA♦ @ 0°F	
—Reserve Capacity	90 min. @ 80°F	
Delcotron Generator	66 amp.	
Frame	Carbon Steel; 36,39,000 psi	
Section Modulus	3.10	3.88
Fuel Tank (nominal capacity)	31 gal.	
Steering Gear Type	Integral Power	
Transmission	4-Speed Automatic w/Overdrive	4-Speed Manual (SM 465)
Shift Location	Steering Column	Floor
Tires	(5) P235/75R15 All Seasons Steel Belted Radial	Fr. (2) LT235/85R16E (10PR) Rr. (2) LT235/85R16E (10PR)
Wheels	(5) Disc 15" x 6"	(4) Disc 16" x 6.5"

*Dual tail pipe

**Single; Aluminized for California

♦CCA-Cold Cranking Amps

R/V SUBURBAN—2-Wheel Drive

DIESEL

STANDARD SPECIFICATIONS

(See Gray Tab Section for Specification Details)

Series	★R10/1500	R20/2500
Engine	6.2 Liter, 379 Cu. In. V8 Diesel	
Base Equip.	Poly-wrapped, Oiled-paper Element	
Air Filter	Throwaway Type	
Oil Filter	Standard	
Oil Cooler	Dual; Aluminized	
Exhaust System		
Emission Control Systems	See Engine & Cooling Section for specific model applications	
Suspension, Front	Independent; Coil Springs	
Capacity	3400 lb.	3800 lb.
Springs @ Ground	1700 lb. ea.	1900 lb. ea.
Shock Absorbers	25mm dia.	32mm dia.
Stabilizer Bar	1.06" dia.	
Suspension, Rear	Salisbury Axle; Hypoid Drive; Two-stage Multi-leaf Springs	
Axle Capacity	4000 lb.	6000 lb.
Axle Ratio	3.08	3.73
Springs @ Ground	2000 lb. ea.	3000 lb. ea.
Shock Absorbers	25mm dia.	32mm dia.
Brakes	Hydraulic; Self-adjusting	
Front	Disc; 11.86" Rotor	Disc; 12.5" Rotor
Rear	Drum; 11.15" x 2.75"	Drum; 13.0" x 2.5"
Booster	Hydraulic Power	
Parking	Cable to Rear Wheels	
Electrical	12 Volt; Negative Ground	
Battery—Freedom Type	Two; 540 CCA♦ ea. @ 0°F	
—Reserve Capacity	115 min. ea. @ 80°F	
Delcotron Generator	66 amp.	
Engine Block Heater	600 watts, 120 volts	
Frame	Carbon Steel; 36,-39,000 psi	
Section Modulus	3.10	3.88
Fuel Tank (nominal capacity)	31 gal.	
Steering Gear Type	Integral Power	
Transmission	4-Speed Automatic w/Overdrive	3-Speed Automatic
Shift Location	Steering Column	
Tires	(5) P235/75R15 All Seasons Steel Belted Radial	Fr. (2) LT235/85R16E (10PR) Rr. (2) LT235/85R16E (10PR)
Wheels	(5) Disc 15" x 6"	(4) Disc 16" x 6.5"

★Not available for registration in State of California

♦CCA-Cold Cranking Amps

GASOLINE

R/V SUBURBAN—4-Wheel Drive

STANDARD SPECIFICATIONS

(See Gray Tab Section for Specification Details)

Series	V10/1500	V20/2500
Engine	5.7 Liter, 350 EFI V8 12"; 150 sq. in. Oiled-paper Element Throwaway Type	
Base Equip.		
Clutch		
Air Filter		
Oil Filter		
Exhaust System	*Single; Aluminized	**Single; Stainless Steel
Emission Control Systems	See Engine & Cooling Section for specific model applications	
Suspension, Front	Salisbury Axle, Hypoid Drive; Single-stage 2-leaf Springs	
Capacity	3600 lb.	3800 lb.
Axle Ratio	3.42	3.42
Springs @ Ground	1850 lb. ea.	1850 lb. ea.
Shock Absorbers	25mm dia.	32mm dia.
Stabilizer Bar	1.25" dia.	1.25" dia.
Hubs, Manual Locking	Standard	Standard
Suspension, Rear	Salisbury Axle, Hypoid Drive; Two-stage Multi-leaf Springs	
Axle Capacity	4000 lb.	6000 lb.
Axle Ratio	3.42	3.42
Springs @ Ground	2000 lb. ea.	3000 lb. ea.
Shock Absorbers	25mm dia.	32mm dia.
Brakes	Hydraulic; Self-adjusting	
Front	Disc; 11.86" Rotor	Disc; 12.5" Rotor
Rear	Drum; 11.15" x 2.75"	Drum; 13" x 2.5"
Booster	Dual Diaphragm	
Parking	Cable to Rear Wheels	
Electrical	12 Volt; Negative Ground	
Battery—Freedom Type	525 CCA♦ @ 0°F	
—Reserve Capacity	90 min. @ 80°F	
Delcotron Generator	66 amp.	
Frame	Carbon Steel; 36,-39,000 psi	
Section Modulus	3.57	3.88
Fuel Tank (nominal capacity)	31 gal.	
Steering Gear Type	Integral Power	
Transmission	4-Speed Manual (SM 465)	
Shift Location	Floor	
Transfer Case	New Process 208 2-Speed	
Shift Lever	Single Lever	
Tires	(5) P235/75R15 All Seasons Steel Belted Radial	Fr. (2) LT235/85R16E (10PR) Rr. (2) LT235/85R16E (10PR)
Wheels	(5) Disc 15" x 6"	(4) Disc 16" x 6.5"

*Dual tail pipe.

**Single, Aluminized for California.

♦CCA-Cold Cranking Amps.

R/V SUBURBAN—4-Wheel Drive

DIESEL

STANDARD SPECIFICATIONS

(See Gray Tab Section for Specification Details)

Series	★V10/1500	V20/2500
Engine	6.2 Liter, 379 Cu. In. V8 Diesel	
Base Equip.	Poly-wrapped, Oiled-paper Element	
Air Filter	Throwaway Type	
Oil Filter	Standard	
Oil Cooler	Dual; Aluminized	
Exhaust System	See Engine & Cooling Section for specific model applications	
Emission Control Systems		
Suspension, Front	Salisbury Axle, Hypoid Drive; Single-stage 2-leaf Springs	
Capacity	3600 lb.	3800 lb.
Axle Ratio	3.42	3.73
Springs @ Ground	1850 lb. ea.	1850 lb. ea.
Shock Absorbers	25mm dia.	32mm dia.
Stabilizer Bar	1.25" dia.	1.25" dia.
Hubs, Manual Locking	Standard	Standard
Suspension, Rear	Salisbury Axle, Hypoid Drive; Two-stage Multi-leaf Springs	
Axle Capacity	4000 lb.	6000 lb.
Axle Ratio	3.42	3.73
Springs @ Ground	2000 lb. ea.	3000 lb. ea.
Shock Absorbers	25mm dia.	32mm dia.
Brakes	Hydraulic; Self-adjusting	
Front	Disc; 11.86" Rotor	Disc; 12.5" Rotor
Rear	Drum; 11.15" x 2.75"	Drum; 13" x 2.5"
Booster	Hydraulic Power	
Parking	Cable to Rear Wheels	
Electrical	12 Volt; Negative Ground	
Battery—Freedom Type	Two; 540 CCA ♦ ea. @ 0° F.	
—Reserve Capacity	115 min. ea. @ 80° F.	
Delcotron Generator	66 amp.	
Engine Block Heater	600 watts, 120 volts	
Frame	Carbon Steel; 36, -39,000 psi	
Section Modulus	3.57	3.88
Fuel Tank (nominal capacity)	31 gal.	
Steering Gear Type	Integral Power	
Transmission	4-Speed Automatic w/Overdrive	3-Speed Automatic
Shift Location	Steering Column	
Transfer Case	New Process 208 2-Speed	
Shift Lever	Single Lever	
Tires	(5) P235/75R15XL All Seasons Steel Belted Radial	Fr. (2) LT235/85R16E (10PR) Rr. (2) LT235/85R16E (10PR)
Wheels	(5) Disc 15" x 6"	(4) Disc 16" x 6.5"

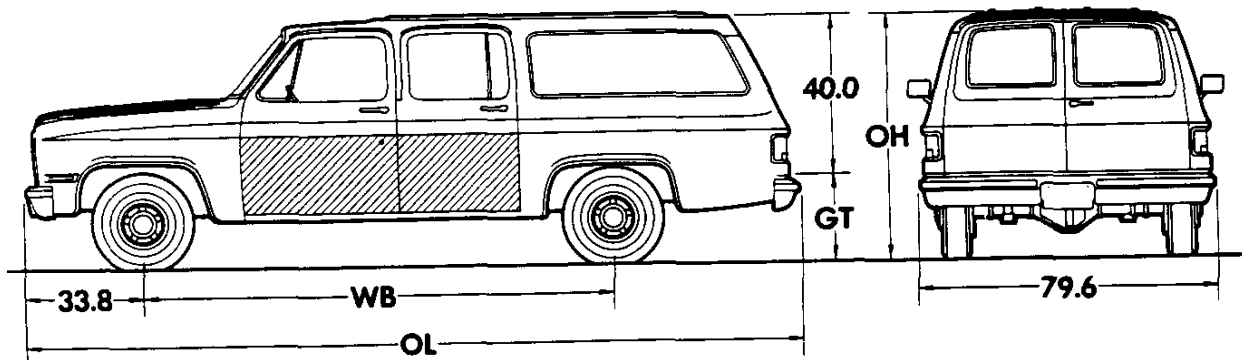
★ Not available for registration in State of California

♦ CCA-Cold Cranking Amps

GASOLINE

R/V SUBURBAN

Body Ordering Codes:
Panel Rear Doors—ZW9
Endgate—E55†



Capacity—165 cu ft
Load Floor Area—40 sq ft

Sign Panel Area (side)
 22" x 72 1/4"



Series	Ground Clearance (in)*	
	Front	Rear
R1	6.6	6.7
R2	8.5	8.5
V1	6.9	7.1
V2	8.6	8.6

Model	Engine No. Cyl.	Dimensions (in)*				†Curb Weight (lb)			†Model Weight (lb)*		
		WB	OL	OH	GT	Front	Rear	Total	Front	Rear	Total

R10/1500 SERIES

R10906	8	129.5	219.1	72.0	29.0	2155	2264	4419	2398	2471	4869
---------------	---	-------	-------	------	------	------	------	------	------	------	------

R20/2500 SERIES

R20906	8	129.5	219.1	74.3	31.7	2347	2469	4816	2590	2676	5266
---------------	---	-------	-------	------	------	------	------	------	------	------	------

V10/1500 SERIES

V10906	8	129.5	219.1	73.8	30.1	2470	2267	4737	2713	2474	5187
---------------	---	-------	-------	------	------	------	------	------	------	------	------

V20/2500 SERIES

V20906	8	129.5	219.1	76.1	33.6	2576	2489	5065	2819	2696	5515
---------------	---	-------	-------	------	------	------	------	------	------	------	------

*Dimensions with standard equipment, unloaded.

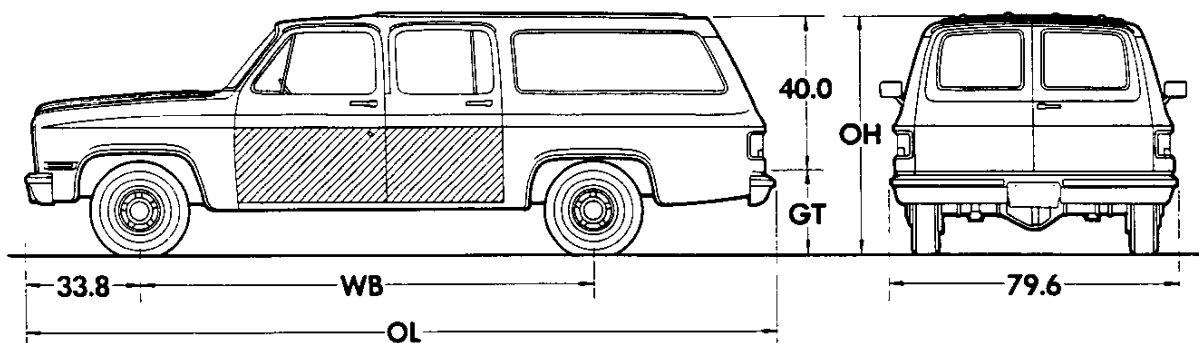
*Model Weight includes Curb Weight plus occupants (standard seating capacity x 150 lb.). Total Model Weight may vary as much as ±50 lbs. to allow for production build variation.

†Curb Weights and Model Weights shown are for models with ZW9 Panel Rear Doors. For models with E55 Endgate, weights must be adjusted as follows: Front -7 lb.; Rear +41 lb.; Total added weight 34 lb.


R/V SUBURBAN

DIESEL

Body Ordering Codes:
Panel Rear Doors—ZW9/B3J
Endgate—E55/B3J†



Capacity—165 cu ft
Load Floor Area—40 sq ft

Sign Panel Area (side) 
 22" x 72 1/4"

Series	Ground Clearance (in)*	
	Front	Rear
R1	6.6	6.7
R2	8.5	8.5
V1	6.9	7.1
V2	8.6	8.6

Model	Engine No. Cyl.	Dimensions (in)*				†Curb Weight (lb)			†Model Weight (lb)*		
		WB	OL	OH	GT	Front	Rear	Total	Front	Rear	Total
R10/1500 SERIES											
R10906	8	129.5	219.1	72.0	29.0	2488	2332	4820	2731	2539	5270
R20/2500 SERIES											
R20906	8	129.5	219.1	74.3	31.7	2629	2513	5142	2872	2720	5592
V10/1500 SERIES											
V10906	8	129.5	219.1	73.8	30.1	2803	2313	5116	3046	2520	5566
V20/2500 SERIES											
V20906	8	129.5	219.1	76.1	33.6	2860	2533	5393	3103	2740	5843

*Dimensions with standard equipment, unloaded.

*Model Weight includes Curb Weight plus occupants (standard seating capacity x 150 lb.). Total Model Weight may vary as much as ±50 lbs. to allow for production build variation.

†Curb Weights and Model Weights shown are for models with ZW9 Panel Rear Doors. For models with E55 Endgate, weights must be adjusted as follows: Front -7 lb.; Rear +41 lb.; Total added weight 34 lb.

R/V SUBURBAN

POWER TEAMS

ALL STATES

POWER TEAMS (MUST ORDER ENGINE, TRANSMISSION AND REAR AXLE)
 (Consult GVWR Selector and Tire Chart to insure tire capacity and availability)

ENGINE	TRANSMISSION		AXLES				GVWR	
	4-SP	AUTO	2.73	3.08	3.42	3.73		
W/NA5 STANDARD EMISSION EQUIPMENT								
-R10906								
L05 V8 5.7 Liter (350 Cu In)-EFI		MXO		GQ1	GU4	—	#GT4	6100
		MXO		GQ1	GU4	GU6	#GT4	6800
LH6 Diesel 6.2 Liter V8 (379 Cu In)(Reqs B3J)		MXO		—	GQ1	GU6	—	6400
		MXO		—	GQ1	GU6	#GT4	7000
-V10906								
L05 V8 5.7 Liter (350 Cu In)-EFI	MM4			—	—	GQ1	GT4	62/7000
		MXO		—	—	GQ1	#GT4	62/7000
LH6 Diesel 6.2 Liter V8 (379 Cu In)(Reqs B3J)		MXO		—	—	GQ1	GT4	68/7300
		MXO		—	—	GQ1	GT4	68/7300
W/NA6 HIGH ALTITUDE EMISSION EQUIPMENT								
-R10906								
L05 V8 5.7 Liter (350 Cu In)-EFI		MXO		—	GQ1	GU6	GT4	61/6800
LH6 Diesel 6.2 Liter V8 (379 Cu In)(Reqs B3J)		MXO		—	—	GQ1	GT4	64/7000
-V10906								
L05 V8 5.7 Liter (350 Cu In)-EFI	MM4	MXO		—	—	GQ1	GT4	62/7000
LH6 Diesel 6.2 Liter V8 (379 Cu In)(Reqs B3J)		MXO		—	—	GQ1	GT4	68/7300
W/YF5 CALIFORNIA EMISSION REQUIREMENTS								
-R10906								
L05 V8 5.7 Liter (350 Cu In)-EFI		MXO		GQ1	GU4	—	#GT4	6100
		MXO		GQ1	GU4	GU6	#GT4	6800
-V10906								
L05 V8 5.7 Liter (350 Cu In)-EFI		MXO		—	—	GQ1	GT4	62/7000

#Reqs Z82 Trailing Special

R/V SUBURBAN

POWER TEAMS

ALL STATES

POWER TEAMS (MUST ORDER ENGINE, TRANSMISSION AND REAR AXLE)
 (Consult GVWR Selector and Tire Chart to insure tire capacity and availability)

W/NA5 STANDARD, NA6 HIGH ALTITUDE ■ OR YF5 CALIFORNIA EMISSIONS

ENGINE	TRANSMISSION		AXLES				GVWR
	4-SP	AUTO	3.42	3.73	4.10	4.56	
-R20906							
L05 V8 5.7 Liter (350 Cu In)-EFI	MM4		GQ1	GT4	GT5	—	8600
		MX1	—	GQ1	GT5	HC4	8600
L19 V8 7.4 Liter (454 Cu In)-EFI (Reqs UA1)		MX1	GQ1	GT4	GT5	—	8600
LL4 Diesel 6.2 Liter V8 (379 Cu In)(Reqs B3J)			—	GQ1	GT5	HC4	8600
		MX1	—	GQ1	GT5	—	8600
-V20906							
L05 V8 5.7 Liter (350 Cu In)-EFI	MM4		GQ1	GT4	GT5	—	8600
		MX1	—	GQ1	GT5	—	8600
LL4 Diesel 6.2 Liter V8 (379 Cu In)(Reqs B3J)			—	GQ1	GT5	—	8600
		MX1	—	GQ1	GT5	—	8600

■ High Altitude Emission Equipment (FOR EXHAUST SMOKE REDUCTION PURPOSES AT HIGH ALTITUDE:
 NOT REQUIRED TO SATISFY HIGH ALTITUDE REGULATIONS)

ENGINE RATINGS

ALL STATES

SAE Net Ratings	*5.7 Liter 350 EFI V8	**5.7 Liter 350 EFI V8
Net Horsepower	210 @ 4000 rpm	†195 @ 4000 rpm
Net Torque, lb-ft	300 @ 2800 rpm	†300 @ 2800 rpm

SAE Net Ratings	**7.4 Liter 454 EFI V8	*6.2 Liter 379 V8 Diesel	**6.2 Liter 379 V8 Diesel
Net Horsepower	230 @ 3600	130 @ 3600 rpm	148 @ 3600 rpm
Net Torque, lb-ft	385 @ 1600	240 @ 2000 rpm	259 @ 2000 rpm

*Series 10/1500 models.

**Series 20/2500 models.

†For California models only: HP — 185 @ 4000 rpm. Torque — 295 @ 2400 rpm.

R/V SUBURBAN

GVWR SELECTOR—ALL STATES

GVW Rating (lbs)	†GAWR (lbs)		Minimum Equipment Required for GVW Rating		
			Tire Capacity (lbs ea)		Chassis Equipment
	Front	Rear	Front	Rear	

R10/1500 SERIES

▲ ● 6100	3250	3686	1843	1843	Standard
◆ ● 6400	3400	3686	1843	1843	
▲ 6800	3250	3968	1984	1984	
◆ 7000	3400	3968	1984	1984	

V10/1500 SERIES

▲ ● 6250	3526	3686	1843	1843	Standard
◆ ● 6900	3600	3986	1984	1984	
▲ 7000	3600	3986	1984	1984	
◆ 7300	3600	3968	1984	1984	Center and Rear Seats (AS3)

†GAWR's shown are the maximum for each axle with equipment listed. Other GAWR's are available, and they are determined as the minimum capacity of either axle, springs or tires.

▲ Not available on diesel engine models.

◆ Not available with Center and Rear Seats (AS3).

● Available on diesel engine models only.

FRONT AND REAR TIRE AVAILABILITY CHART—ALL STATES

R-V10/1500 SERIES

**Spare tire to match either front or rear tires must be ordered.
V10/1500 models require matching front and rear tread**

Description	Capacity (lbs ea)	Highway		On-Off Road		Spare
		Front	Rear	*Front	Rear	
TUBELESS						
P235/75R15 Steel Belted Radial	1843	XFL —	YFL —	— *YES	— YES	ZFL ZES
P235/75R15 Whitewall Steel Belted Radial	1843	XFM	YFM	—	—	ZFM
P235/75R15 XL Steel Belted Radial	1984	XHA	YHA	—	—	ZHA
P235/75R15 Whitewall XL Steel Belted Radial	1984	XHB	YHB	—	—	ZHB

*On-Off road front tires available on V1 models only.

R/V SUBURBAN

GVWR SELECTOR—ALL STATES

GVW Rating (lbs)	†GAWR (lbs)		Minimum Equipment Required for GVW Rating		
	Front	Rear	Tire Capacity (lbs ea)		Chassis Equipment
			Front	Rear	

R20/2500 SERIES

8600	3800	6000	3042	3042	Standard
------	------	------	------	------	----------

V20/2500 SERIES

8600	3800	6000	3042	3042	Standard
------	------	------	------	------	----------

†GAWR's shown are the maximum for each axle with equipment listed. Other GAWR's are available, and they are determined as the minimum capacity of either axle, springs or tires.

FRONT AND REAR TIRE AVAILABILITY CHART—ALL STATES

R-V20/2500 SERIES

Spare tire to match either front or rear tires is available at extra cost.
V20/2500 models require matching front and rear tread

Description	Capacity (lbs ea)	Highway		On-Off Road		Spare
		Front	Rear	★Front	Rear	
TUBELESS						
LT235/85R16E Steel Belted Radial	3042	XYN — —	YYN — —	— ★XYT —	— YYT YYT	ZYN ZYT ZYN

★On-Off road front tires available on V2 models only.

R/V SUBURBAN

THE FOLLOWING EQUIPMENT IS STANDARD ON DIESEL ENGINE MODELS (ALSO SEE STANDARD SPECIFICATIONS PAGES)

- Low Coolant Sensor
- Poly-wrapped Paper Element Air Cleaner
- Auxiliary Engine Oil Cooler provided with 4.56 ratio rear axle (in addition to cooler in radiator tank)
- Power Steering
- Engine Block Heater (600 watts, 120 volts)
- Water/fuel separator unit which incorporates a water sensor and sending unit, a fuel filter, a fuel heater and water drain capability
- Hydraulic Power-assisted Brakes
- 66-amp Generator
- Engine Oil Cooler (located in radiator tank)
- Dual 540 Cold Cranking Amp/115 min. Reserve Capacity Batteries
- HD Radiator
- Dual Exhaust System
- Additional Insulation:
 - Cab-to-fender insulators
 - Fiberglass hood insulator
 - Fiberglass engine compartment firewall insulator
 - Cowl side spray-on deadener
 - Driver compartment dash mat with increased mastic layer
 - Resinated cotton and mastic floor insulation
 - Full cowl interior trim panels with resinated cotton insulation
 - Full-length, foam-backed cloth headliner
- Warning Lights: Glow Plugs, Water-in-fuel (or fuel filter), and Low Coolant
- Diesel Engine Identification:
 - Hood ornament
 - Fender nameplates
 - Rear door or tailgate nameplate
 - "Diesel Fuel Only" filler cap and label

R-V SUBURBAN

1988 VEHICLES WITH STANDARD EQUIPMENT

prices shown are effective with vehicles produced on and after January 2, 1988

Description	Model Number	Body Code	Wheel Base	Factory D&H(a)	List Price	Mfr's Suggested Retail Price*	Group Number
◆ 8-Cylinder 5.7 Liter (350 Cu. In.) E.F.I. V8 Gasoline Engine-Engine Ordering Code L05							
R10 Series 2-Wheel Drive							
Panel Doors	CR10906	ZW9	129.5"	N.A.	13945.00	13945.00	16
Tailgate	CR10906	E55	129.5"	N.A.	13988.00	13988.00	16
V10 Series 4-Wheel Drive							
Panel Doors	CV10906	ZW9	129.5"	N.A.	14870.00	14870.00	16
Tailgate	CV10906	E55	129.5"	N.A.	14912.00	14912.00	16
R20 Series 2-Wheel Drive							
Panel Doors	CR20906	ZW9	129.5"	4.00	14555.00	14559.00	16
Tailgate	CR20906	E55	129.5"	4.00	14598.00	14602.00	16
V20 Series 4-Wheel Drive							
Panel Doors	CV20906	ZW9	129.5"	4.00	16247.00	16251.00	16
Tailgate	CV20906	E55	129.5"	4.00	16289.00	16293.00	16
◆ 8-Cylinder 6.2 Liter (379 Cu. In.) L.D. Diesel V8 Engine-Engine Ordering Code LH6							
R10 Series 2-Wheel Drive							
Panel Doors	CR10906	ZW9&B3J	129.5"	N.A.	16260.00	16260.00	16
Tailgate	CR10906	E55&B3J	129.5"	N.A.	16304.00	16304.00	16
V10 Series 4-Wheel Drive							
Panel Doors	CV10906	ZW9&B3J	129.5"	N.A.	17939.00	17939.00	16
Tailgate	CV10906	E55&B3J	129.5"	N.A.	17982.00	17982.00	16
◆ 8-Cylinder 6.2 Liter (379 Cu. In.) H.D Diesel V8 Engine-Engine Ordering Code LL4							
R20 Series 2-Wheel Drive							
Panel Doors	CR20906	ZW9&B3J	129.5"	4.00	16835.00	16839.00	16
Tailgate	CR20906	E55&B3J	129.5"	4.00	16879.00	16883.00	16
V20 Series 4-Wheel Drive							
Panel Doors	CV20906	ZW9&B3J	129.5"	4.00	18530.00	18534.00	16
Tailgate	CV20906	E55&B3J	129.5"	4.00	18573.00	18577.00	16

★ Manufacturer's Suggested Retail Prices do not include applicable destination charges, state and local taxes, license fees, optional equipment or special items or services.

◆ Refer to Dealer Order Guide for California Requirements.

OPTIONS WHEN INSTALLED BY GENERAL MOTORS

prices shown are effective with vehicles produced on and after January 2, 1988

Description	Option Number	Factory D&H(a)	List Price	Mfr's Suggested Retail Price◇
Silverado/Sierra Classic: Available only when custom vinyl or cloth seats are specified. Includes wheel opening moldings, custom steering wheel, YG3 Deluxe Molding Package, AU3 Power Side and Rear Door Locks, halogen headlamps, bright taillight trim and rear door or tailgate moldings, bright front turn signal and front side marker lamp bezels, fender nameplates, carpeting, T63 headlamp Warning Buzzer, bright sill plates, plastic door trim panels with storage pockets and bright brushed-finish accents, dual horns, visor mirror, passenger assist handles, B85 Bright Body Side Moldings, V22 Deluxe Front Appearance, nameplate on instrument panel, dome lamp with bright bezels, special insulation and pillar trim panels. Also includes spare tire cover when spare tire is specified.				
R-V1 Series only. Also includes N67 Rally Wheels				
Without E55 Tailgate	YE9	N.A.	1369.00	1369.00
With E55 Tailgate	YE9	N.A.	1305.00	1305.00
R-V2 Series				
Without E55 Tailgate	YE9	N.A.	1248.00	1248.00
With E55 Tailgate	YE9	N.A.	1184.00	1184.00

(a) D & H Charges on vehicle and optional equipment include reimbursement to ordering Division for any tax that it has paid, incurred or agreed to pay thereon.

◇ State and local taxes not included.

R-V SUBURBAN

OPTIONS WHEN INSTALLED BY GENERAL MOTORS

prices shown are effective with vehicles produced on and after January 2, 1988

Description	Option Number	Factory D&H(a)	List Price	Mfr's Suggested Retail Price◇
Seat Trim: Driver and Passenger. (See Interior and Exterior Color Selection Chart for ordering information)				
L**1 Custom Cloth Bench Seat.				
Without YE9				NO ADDITIONAL CHARGE
With YE9				NO ADDITIONAL CHARGE
Without AT5 or AS3 Seats				NO ADDITIONAL CHARGE
With AT5 Center Seat without AS3 Center and Rear Seats. Includes full carpeting		N.A.	74.00	74.00
With AS3 Center and Rear Seats. Includes full carpeting		N.A.	74.00	74.00
X**1 Custom Vinyl Bench Seat.				
Without YE9				NO ADDITIONAL CHARGE
With YE9				NO ADDITIONAL CHARGE
Without AT5 or AS3 Seats				NO ADDITIONAL CHARGE
With AT5 Center Seat without AS3 Center and Rear Seats. Includes full carpeting		N.A.	74.00	74.00
With AS3 Center and Rear Seats. Includes full carpeting		N.A.	74.00	74.00
L**6 Custom Cloth Reclining Bucket Seats. Includes console and folding armrests				
Without AT5 or AS3 Seats		N.A.	385.00	385.00
With AT5 Center Seat without AS3 Center and Rear Seats. Includes full carpeting		N.A.	458.00	458.00
With AS3 Center and Rear Seats. Includes full carpeting		N.A.	458.00	458.00
X**6 Custom Vinyl Reclining Bucket Seats. Includes console and folding armrests				
Without AT5 or AS3 Seats		N.A.	385.00	385.00
With AT5 Center Seat without AS3 Center and Rear Seats. Includes full carpeting		N.A.	458.00	458.00
With AS3 Center and Rear Seats. Includes full carpeting		N.A.	458.00	458.00
Paints, Exterior: (See Interior and Exterior Color Selection Chart for ordering information).				
Solid	ZY1			NO ADDITIONAL CHARGE
Special Two-Tone.				
Without YE9 Includes YG1 Custom Molding Package and wheel opening moldings	ZY3	N.A.	345.00	345.00
With YE9	ZY3	N.A.	180.00	180.00
Exterior Decor Package. Includes dual-tone side and rear decal striping				
Without YE9. Also includes YG1 Custom Package and wheel opening moldings	ZY5	N.A.	512.00	512.00
With YE9	ZY5	N.A.	347.00	347.00
Emission Systems: Dealer Note - One of the following emission options must be specified. (See Power Teams Chart for availability and complete specifications)				
California Emission Requirements: Not available when LH6 6.2 Liter Diesel Engine, NA5 Standard or NA6 High Altitude Emissions are specified. Includes all testing, equipment and/or certification necessary for registration in the State of California				
	YF5	N.A.	99.00	99.00
High Altitude Emission Equipment. Not available when NA5 Standard or YF5 California Emissions are specified				
	NA6			NO ADDITIONAL CHARGE
Standard Emission Equipment. Not available when YF5 California or NA6 High Altitude Emissions are specified				
	NA5			NO ADDITIONAL CHARGE
Engines: (See Power Teams Chart for availability and complete specifications)				
Gasoline.				
5.7 Liter (350 Cu. In.) E.F.I. V8. Standard	LO5			NO ADDITIONAL CHARGE
7.4 Liter (454 Cu. In.) E.F.I. V8. R2 Series only. Available only when UA1 Battery is specified	L19	N.A.	385.00	385.00
Diesel.				
6.2 Liter (379 Cu. In.) L.D. V8 Diesel. R-V1 Series only. Available only when B3J Diesel Equipment is specified. Not available when YF5 California Emission Requirements is specified	LH6			NO ADDITIONAL CHARGE
6.2 Liter (379 Cu. In.) H.D. V8 Diesel. R-V2 Series only. Available only when B3J Diesel Equipment is specified	LL4			NO ADDITIONAL CHARGE

(a) D & H Charges on vehicle and optional equipment include reimbursement to ordering Division for any tax that it has paid, incurred or agreed to pay thereon.
◇ State and local taxes not included.

R-V SUBURBAN

OPTIONS WHEN INSTALLED BY GENERAL MOTORS

prices shown are effective with vehicles produced on and after January 2, 1988

Description	Option Number	Factory D&H(a)	List Price	Mfr's Suggested Retail Price [⊙]
Transmissions:				
4-Speed Manual. Standard on R2 or V1-2 Series only. Not available when L19 7.4 Liter Engine or B3J Diesel Equipment is specified	MM4	NO ADDITIONAL CHARGE		
4-Speed Automatic Overdrive. Standard on R1 Series and V1 Series with B3J Diesel Equipment	MX0	N.A.	735.00	735.00
3-Speed Automatic. R-V2 Series only Standard on R-V 2 Series with B3J Diesel Equipment	MX1	N.A.	565.00	565.00
Axles, Rear: (See Power Teams Chart for option number selection, availability and complete specifications)				
Optional Ratio	N.A.	38.00	38.00
Locking Differential	G80	N.A.	252.00	252.00
Tires: (See Tire Charts for Tire Availability)				
All rim sizes are 6.00" on R-V1 Series except when N67 or PF2 wheels are specified.				
All rim sizes are 6.50" on R-V2 Series.				
TUBELESS				
P235/75R15 All Seasons Steel Belted Radial Ply Blackwall (Maximum Capacity 1843-lbs). Standard on R-V1 Series				
Front	XFL	NO ADDITIONAL CHARGE		
Rear	YFL	NO ADDITIONAL CHARGE		
Spare	ZFL	NO ADDITIONAL CHARGE		
P235/75R15 On-Off Road Steel Belted Radial Ply Blackwall (Maximum Capacity 1843-lbs). V1 Series only				
Front	XES	N.C.	22.00	22.00
Rear	YES	N.C.	22.00	22.00
Spare	ZES	N.C.	11.00	11.00
P235/75R15 XL All Seasons Steel Belted Radial Ply Whitewall (Maximum Capacity 1843-lbs). R-V1 Series only				
Front	XFM	N.C.	36.00	36.00
Rear	YFM	N.C.	36.00	36.00
Spare	ZFM	N.C.	18.00	18.00
P235/75R15 XL All Seasons Steel Belted Radial Ply Blackwall (Maximum Capacity 1984-lbs). R-V1 Series only				
Front	XHA	N.C.	20.00	20.00
Rear	YHA	N.C.	20.00	20.00
Spare	ZHA	N.C.	10.00	10.00
P235/75R15 All Seasons Steel Belted Radial Ply Whitewall (Maximum Capacity 1984-lbs). R-V1 Series only				
Front	XHB	N.C.	58.00	58.00
Rear	YHB	N.C.	58.00	58.00
Spare	ZHB	N.C.	29.00	29.00
LT235/85R16E Highway Steel Belted Radial Ply Blackwall (Maximum Capacity 3042-lbs). Standard on R-V2 Series only.				
Front	XYN	NO ADDITIONAL CHARGE		
Rear	YYN	NO ADDITIONAL CHARGE		
Spare	ZYN	1.00	352.00	353.00
LT235/85R16E On-Off Road Steel Belted Radial Ply Blackwall (Maximum Capacity 3042-lbs.)				
Front. V2 Series only	XYT	.62	56.00	56.62
Rear. R-V2 Series only	YYT	.62	56.00	56.62
Spare. R-V2 Series only	ZYT	1.31	380.00	381.31

(a) D & H Charges on vehicle and optional equipment include reimbursement to ordering Division for any tax that it has paid, incurred or agreed to pay thereon.
[⊙] State and local taxes not included.

R-V SUBURBAN

OPTIONS WHEN INSTALLED BY GENERAL MOTORS

prices shown are effective with vehicles produced on and after January 2, 1988

Description	Option Number	Factory D&H(a)	List Price	Mfr's Suggested Retail Price ◊
OTHER OPTIONS				
Air Cleaner, Pre-Cleaner: With L19 7.4 Liter Engine, available only 3.73 Rear Axle Ratio is specified on R2 Series	K46	N.A.	44.00	44.00
Air Conditioning: All-Weather. Not available when V10 Cold-Climate Package is specified. Includes extra cooling.				
<i>Front.</i> Included when C69 Front and Rear Air Conditioning is specified. Recommended for front seat area cooling only.				
Without B3J Diesel Equipment	C60	N.A.	781.00	781.00
With B3J Diesel Equipment. Includes 78-Amp Generator	C60	N.A.	719.00	719.00
<i>Front and Rear.</i> Rear interior roof mounted. Rear system operates on recirculating air.				
Without B3J Diesel Equipment. Includes 105-Amp Generator	C69	N.A.	1227.00	1227.00
With B3J Diesel Equipment. Includes 78-Amp Generator	C69	N.A.	1161.00	1161.00
Appearance, Deluxe Front: Included when YE9 is specified. Includes dark argent grille with bright trim and halogen headlamps.	V22	N.A.	139.00	139.00
Batteries: 12-Volt. Not available when B3J Diesel Equipment is specified.				
<i>Auxiliary.</i> 540 Cold Cranking Amps Delco Freedom	TP2	N.A.	134.00	134.00
<i>Heavy-Duty.</i> 630 Cold Cranking Amps Delco Freedom. Included when V10 Cold-Climate Package is specified	UA1	N.A.	56.00	56.00
Bumper Equipment:				
<i>Bumpers, Deluxe.</i> Front and Rear. Not available when V31 Bumper Guards are specified. Includes front and rear bumpers and black resilient impact strips	VE5	N.A.	51.00	51.00
<i>Guards, Chromed, Front Bumper</i>	V31	N.A.	43.00	43.00
Clock: Quartz Electric. Not available when UM6 or UM7 Radio is specified	U35	N.A.	41.00	41.00
Cold-Climate Package: Not available when B3J Diesel Equipment, C60 Front or C69 Front and Rear Air Conditioning is specified. Includes special heater and defroster, K05 Engine Block Heater, anti-freeze protection to -32 degrees, and UA1 H.D. Battery.	V10	N.A.	104.00	104.00
Cooling System: Recommended for heavy-duty trailering.				
<i>Engine Oil.</i> Not available when B3J Diesel Equipment is specified. R-V2 Series available only when L05 5.7 Liter or L19 7.4 Liter Engine is specified. Included when Z82 Trailering Special is specified	KC4	N.A.	126.00	126.00
<i>Radiator, Heavy-Duty.</i> Not available when B3J Diesel Equipment, C60 Front or C69 Front and Rear Air Conditioning is specified. R-V2 Series also not available when MX1 Automatic Transmission is specified	V01	N.A.	56.00	56.00
<i>Radiator and Transmission Oil, Heavy-Duty.</i> R-V1 Series available only when MX0 Automatic Transmission is specified. R-V2 Series available only when MX1 Automatic Transmission is specified. Not available when V01 H.D. Raditor is specified. Included when Z82 Trailering Special is specified.	V02	N.A.	63.00	63.00
Defogger, Rear Window: Electric. Available only when A33 Power Tailgate Window is specified. Not available when AJ1 Deep Tinted Glass is specified.				
Without B3J Diesel Equipment. C60 Front or C69 Front and Rear Air Conditioning	C49	N.A.	154.00	154.00
With B3J Diesel Equipment. C60 Front or C69 Front and Rear Air Conditioning	C49	N.A.	92.00	92.00
Door Lock System, Power: Side and Rear Doors. Included with ZQ2 Operating Convenience Package or YE9				
With E55 Tailgate	AU3	N.A.	211.00	211.00
With ZW9 Body	AU3	N.A.	275.00	275.00
Floor Covering: Mats, Color-Keyed, Floor, Removable. Available only when YE9 is specified				
Front only	B32	N.A.	16.00	16.00
Rear only. Available only when B32 Front Mats are specified	B33	N.A.	22.00	22.00

(a) D & H Charges on vehicle and optional equipment include reimbursement to ordering Division for any tax that it has paid, incurred or agreed to pay thereon.
 ◊ State and local taxes not included.

R-V SUBURBAN

OPTIONS WHEN INSTALLED BY GENERAL MOTORS

prices shown are effective with vehicles produced on and after January 2, 1988

Description	Option Number	Factory D&H(a)	List Price	Mfr's Suggested Retail Price ◇
OTHER OPTIONS				
Glass:				
<i>Deep Tinted.</i> Not available when C49 Defogger is specified. Includes tinted glass on passenger and driver's side door. Also includes dark laminated glass on side windows and rear door				
	AJ1	N.A.	298.00	298.00
<i>Deep Tinted with Light Tinted Rear Window.</i> Not available when AJ1 Deep Tinted Glass is specified. Includes tinted glass on passenger, driver's side and rear doors. Also includes dark laminated glass on side windows				
	AA3	N.A.	252.00	252.00
Harness, Trailer Wiring: Heavy-Duty 7-Lead. Included when Z82 Trailering Special is specified				
	UY7	N.A.	46.00	46.00
Headlamp Warning Buzzer: Included with YE9				
	T63	N.A.	12.00	12.00
Heaters: Engine Block. 600 Watts, 120 Volts. Not available when B3J Diesel Equipment is specified. Included when V10 Cold-Climate Package is specified				
	K05	N.A.	33.00	33.00
<i>Rear.</i> Located on right side, behind rear fender well.				
	C36	N.A.	267.00	267.00
	C36	N.A.	205.00	205.00
Hubs: V1-2 Series only				
<i>Automatic Locking</i>				
	X6Z	N.A.	60.00	60.00
Lamps: Roof Marker. Five. Not available when YF5 California Emissions is specified.				
	U01	N.A.	52.00	52.00
Mirrors, Exterior: LH and RH.				
<i>Below-Eye-Line Type.</i> 9" x 6.5". Stainless Steel				
	D45	N.A.	35.00	35.00
<i>Camper Type.</i> 7.5" x 10.5". Stainless steel. Adjustable arm feature to provide field of vision for vehicles to 96" wide. Shipped loose for dealer installation				
	DF2	N.A.	48.00	48.00
Moldings:				
<i>Body Side, Black.</i> Bright with black insert. Not available when YE9, B85 Bright Body Side Molding or YG3 Deluxe Molding Package is specified. Included when YG1 Custom Molding Package, ZY3 Special Two-Tone Paint or ZY5 Exterior Decor Package is specified. Includes lower side and rear moldings of black plastic with bright trim				
	B84	N.A.	121.00	121.00
<i>Body Side, Bright.</i> Not available when ZY3 Special Two-Tone Paint, ZY5 Exterior Decor Package, B84 Black Body Side Moldings or YG1 Custom Molding Package is specified. Included when YG3 Deluxe Molding Package or YE9 is specified. Includes bright plastic body side and rear lower moldings with black paint trim plus bright trim for front side marker lamps and taillights				
	B85	N.A.	152.00	152.00
<i>Custom Package.</i> Not available when B85 Bright Body Side Moldings, YE9 or YG3 Deluxe Molding Package is specified. Included when ZY3 Special Two-Tone Paint or ZY5 Exterior Decor Package is specified. Includes bright trim for front side marker lamps and taillights, B84 Black Body Side and wheel opening moldings.				
	YG1	N.A.	166.00	166.00
<i>Deluxe Package.</i> Included when YE9 is specified. Includes B85 Bright Body Side Moldings, bright trim for front side marker lamps and taillights and wheel opening moldings.				
	YG3	N.A.	183.00	183.00
	YG3	N.A.	17.00	17.00
	B93	N.A.	24.00	24.00
Guards, Door Edge				
Operating Convenience Package: Includes A31 Power Windows and door locks				
Without YE9				
	ZQ2	N.A.	583.00	583.00
	ZQ2	N.A.	519.00	519.00
With YE9				
	ZQ2	N.A.	308.00	308.00
	ZQ2	N.A.	308.00	308.00

(a) D & H Charges on vehicle and optional equipment include reimbursement to ordering Division for any tax that it has paid, incurred or agreed to pay thereon.
 ◇ State and local taxes not included.

R-V SUBURBAN

OPTIONS WHEN INSTALLED BY GENERAL MOTORS

prices shown are effective with vehicles produced on and after January 2, 1988

Description	Option Number	Factory D&H(a)	List Price	Mfr's Suggested Retail Price◇
OTHER OPTIONS				
Preliminary Price Information	B3W	N.A.	N.A.	N.A.
Radio Equipment:				
AM/FM Stereo Radio with Seek and Scan and Digital Clock. Includes dual rear speakers	UM7	N.A.	208.00	208.00
AM/FM Stereo Radio with Seek and Scan, Stereo Cassette Tape and Digital Clock. Includes dual rear speakers	UM6	N.A.	329.00	329.00
Radio Delete	UL5	N.A.	(-77.00)	(-77.00)
Seats: Seat trim matches front seat whether standard or optional. Includes seat area floor covering, floor insulation and (3) seat belts. Dealer Note - One of the following seat options must be specified. (Added weight includes passenger weight allowance of 150-lbs per seating position. Refer to vehicle and option weight section of Data Book).				
Center only. Non-adjustable type with independent LH and RH folding sections and center seat shoulder belts.....	AT5	N.A.	527.00	527.00
Center and Rear. Includes non-adjustable center and quick release removable type rear seats. (3) additional seat belts plus LH and RH rear arm rests with ashtrays and center seat shoulder belts.				
R1 Series only. Available only when HA or HB P235/75R15 Tires are specified.	AS3	N.A.	903.00	903.00
R-V2 or V1 Series only. V1 Series available only when HA or HB P235/75R15 Tires are specified	AS3	N.A.	903.00	903.00
Optional Seat Not Desired	YG4	NO ADDITIONAL CHARGE		
Shield, Fuel Tank:				
R1-2 Series only.				
Without NE2 Fuel Tank	NY1	N.A.	51.00	51.00
With NE2 Fuel Tank	NY1	N.A.	130.00	130.00
V1-2 Series only. Includes transfer case skid plate.				
Without NE2 Fuel Tank	NY1	N.A.	96.00	96.00
With NE2 Fuel Tank	NY1	N.A.	175.00	175.00
Shock Absorbers: Front and Rear, Heavy-Duty. R1 Series only. Standard on R-V2 Series. Included when Z82 Trailering Special is specified				
	F51	N.A.	36.00	36.00
Shocks, Front Quad: V1-2 Series only. Includes dual left and right hand shock absorbers on front, heavy-duty shock absorbers on rear and a front axle nose bumper to limit axle windup.				
V1 Series only	Z75	N.A.	136.00	136.00
V2 Series only	Z75	N.A.	100.00	100.00
Speed Control, Electronic: Not available when MM4 4-Speed Transmission is specified				
	K34	N.A.	205.00	205.00
Springs: Front, Heavy-Duty. Capacity 2250-lb each.				
V1 Series only. Recommended for snowplow type usage only.				
Without Z75 Front Quad Shock Absorbers. Includes H.D. front and rear shock absorbers	F60	N.A.	98.00	98.00
With Z75 Front Quad Shock Absorbers	F60	N.A.	63.00	63.00
V2 Series only	F60	N.A.	63.00	63.00
Stabilizer: Front, Heavy-Duty. 1.25" diameter. R2 Series only. Standard on V1-2 Series				
	F58	N.A.	19.00	19.00
Steering Wheel: Comfortilt. With MM4 4-Speed Transmission, available only when CD4 Intermittent Wipers is specified				
	N33	N.A.	121.00	121.00
Tank, Fuel: Replaces production fuel tank. Approximately 40-Gallon Capacity for Gasoline and 41-Gallon Capacity for Diesel				
	NE2	N.A.	60.00	60.00
Tires, Puncture Sealant: Available only when HB P235 Tires are specified				
	P42	N.A.	230.00	230.00
Towing Device: Two front towing hooks.	V76	N.A.	38.00	38.00

(a) D & H Charges on vehicle and optional equipment include reimbursement to ordering Division for any tax that it has paid, incurred or agreed to pay thereon.

◇ State and local taxes not included.

R-V SUBURBAN

OPTIONS WHEN INSTALLED BY GENERAL MOTORS

prices shown are effective with vehicles produced on and after January 2, 1988

Description	Option Number	Factory D&H(a)	List Price	Mfr's Suggested Retail Price◇
OTHER OPTIONS				
Trailer Hitch:				
<i>Deadweight Type.</i> Not available when Z82 Trailering Special is specified	VR2	N.A.	62.00	62.00
<i>Weight Distributing Platform Type.</i> Not available when VR2 Deadweight Type Trailer Hitch is specified. Included when Z82 Trailering Special is specified	VR4	N.A.	164.00	164.00
Trailering Special Equipment: Includes VR4 Weight Distributing Hitch Platform, UY7 Wiring Harness and V02 H.D. Radiator Transmission Oil Cooler. (See Trailering Guide for GCW Ratings with available power team combinations.)				
R1 Series only. Available only when 3.73 or 3.42 rear axle ratio is specified. With B3J Diesel Equipment not available when YF5 California Emissions are specified. Also includes F51 H.D. Shock Absorbers.				
Without B3J Diesel Equipment. Available only when L05 5.7 Liter Engine is specified. Also includes KC4 Engine Oil Cooler.	Z82	N.A.	434.00	434.00
With B3J Diesel Equipment	Z82	N.A.	272.00	272.00
R2 Series only. Available only when MX0 or MX1 Automatic Transmission is specified.				
Without B3J Diesel Equipment. Also includes KC4 Engine Oil Cooler.	Z82	N.A.	398.00	398.00
With B3J Diesel Equipment	Z82	N.A.	272.00	272.00
V1-2 Series only. V2 Series available only when MX0 or MX1 Automatic Transmission is specified. V1 Series available only when MX0 Automatic Transmission and 3.42 or 3.73 Rear Axle Ratio is specified. V1 Series also requires V01 H.D. Radiator unless C60 Front or C69 Front and Rear Air Conditioning is specified.				
Without B3J Diesel Equipment. Also includes KC4 Engine Oil Cooler.	Z82	N.A.	398.00	398.00
With B3J Diesel Equipment	Z82	N.A.	272.00	272.00
Wheel Trim:				
<i>Wheel Covers.</i> R-V1 Series only	P01	N.A.	42.00	42.00
<i>Wheel Covers, Special. Bright Metal.</i> R-V2 Series only	PA1	N.A.	124.00	124.00
Wheels:				
<i>Rally.</i> R-V1 Series only. Included when YE9 is specified. Includes special hub caps, trim rings and 15" x 8" wheels				
<i>Aluminum, Cast.</i> R-V1 Series only. Four Wheels only. Includes 15" x 7" wheels and special hub caps	N67	N.A.	121.00	121.00
Without YE9	N90	N.A.	318.00	318.00
With YE9	N90	N.A.	197.00	197.00
Windows: Electric.				
<i>Power Side Door Glass.</i> Included when ZQ2 Operating Convenience Package is specified	A31	N.A.	308.00	308.00
<i>Power Tailgate.</i> Available only when E55 Tailgate is specified	A33	N.A.	103.00	103.00
Windshield Wiper System: Intermittent. With MM4 4-Speed Transmission, available only when N33 Comfortilt Wheel is specified				
	CD4	N.A.	59.00	59.00

(a) D & H Charges on vehicle and optional equipment include reimbursement to ordering Division for any tax that it has paid, incurred or agreed to pay thereon.
◇ State and local taxes not included.

NOTES

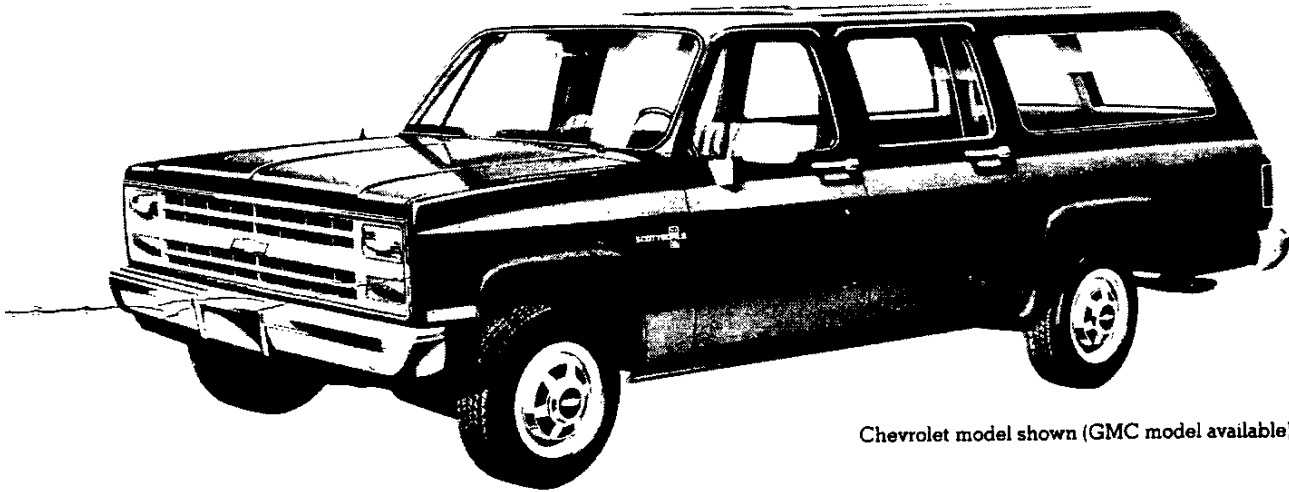
R/V SUBURBAN

**CAB & BODY FEATURES
CAB DIMENSIONS
SEATING ARRANGEMENTS
COLOR & TRIM CHARTS
TWO-TONES**

R/V SUBURBAN

SCOTTSDALE/HIGH SIERRA FEATURES—STANDARD MODEL

The Scottsdale/High Sierra standard models include the following items as standard equipment



Chevrolet model shown (GMC model available)

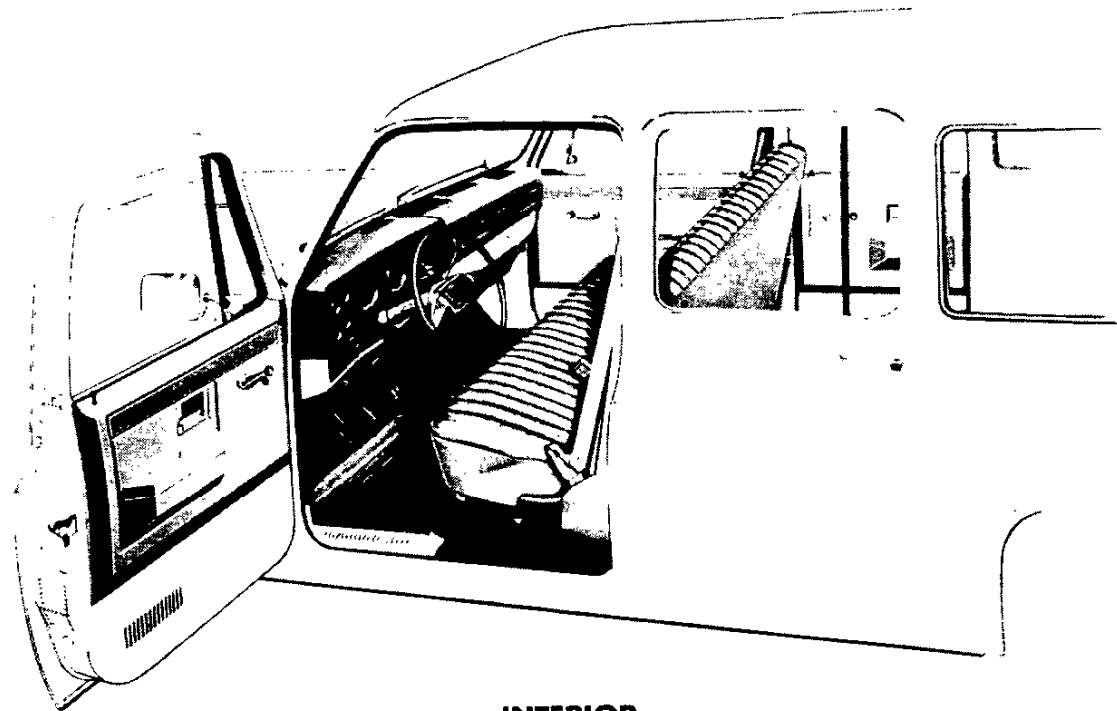
EXTERIOR

- **Bumpers:** Front and rear; chromed
- **Color:** See Interior and Exterior Color Selection Chart
- **Doors:** Four side doors, two LH and two RH; two rear panel doors (optional endgate with drop-glass available)
- **Glass:** Tinted; all windows; includes shade band on upper windshield
- **Grille and Headlamp Bezels:** Molded plastic; painted argent; with bright Chevrolet emblem/GMC letters at center of grille
- **Horn:** Dual, electric, low- and high-note
- **Hub Caps:** Bright metal with black trim
- **Keys:** Two-key system with separate keys for ignition switch and door locks
- **Lights:**
 - Backup lamps: Two rear (integral with taillamps)
 - Combination parking/direction/hazard: Two front
 - Combination tail/stop/direction/hazard: Two rear
 - Headlamps: Two, rectangular
 - License plate lamp: Single rear
 - Side marker lamps with reflectors: Two front; two rear (integral with taillamps)
- **Mirrors:** RH and LH below eyeline type with adjustable 9" wide x 6½" high head; painted finish
- **Moldings:** Bright drip moldings over side and rear doors; headlamp and grille outline moldings
- **Nameplates:** Bright "Scottsdale/High Sierra" nameplates, with series designation, on front fenders near doors; bright "Suburban" nameplate on RH rear door. "FUEL INJECTION" nameplate on LH rear door or endgate
- **Tools:** Mechanical jack and wheel wrench
- **Wheels:** Painted white
- **Windshield Wipers and Washers:** Electric, 2-speed wipers with black finish on exposed metal portions; wet-arm demand-type washer system

R/V SUBURBAN

SCOTTSDALE/HIGH SIERRA FEATURES—STANDARD MODEL

The Scottsdale/High Sierra standard models include the following items as standard equipment



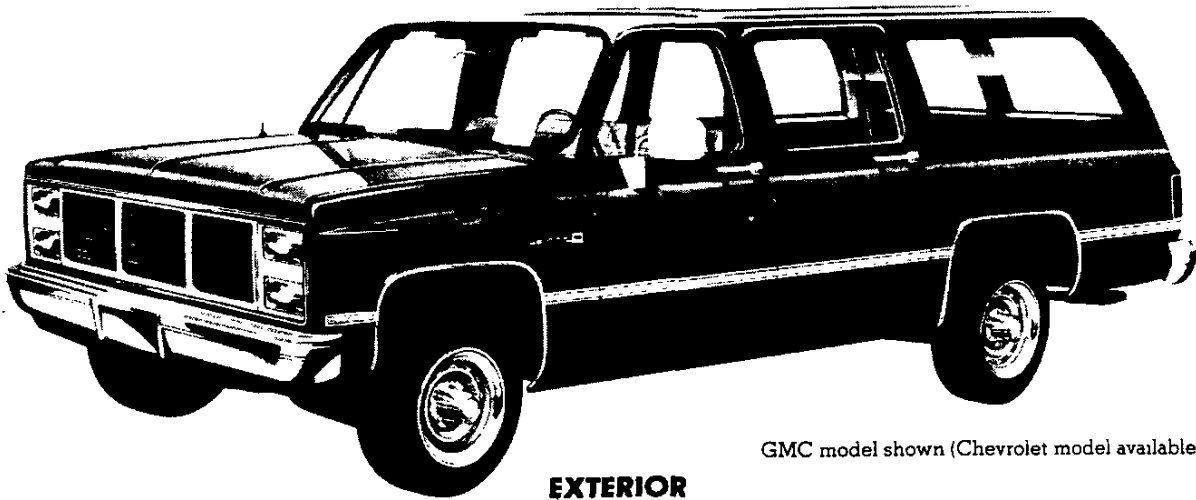
INTERIOR

- **Armrests:** RH and LH padded; integral with side door trim panels
- **Ashtrays:** In middle of instrument panel and in rear side door trim panels
- **Coat Hooks:** Over RH and LH rear side door openings
- **Colors:**
Painted areas: Same as exterior primary color choice
Interior trim: Coordinated with seat trim color choices
- **Cigarette Lighter:** With fiber optic illuminated ashtray
- **Dome Lamps:** Two; one front, one rear with bright trim
- **Dome and Interior Lamp Switches:** Front and rear side door actuated (dome and interior lamps also may be activated by main light switch)
- **Floor Covering:** Embossed color-keyed mats in front seat area (also in center and rear seat areas when optional center seat is ordered); color-keyed carpeting on rear face of seat backs on center seats (when optional center seats are ordered)
- **Headliner:** Full-length, color-keyed, perforated molded plastic with fiberglass blanket backing; includes matching retainer moldings
- **Heater and Defogger:** Heavy-duty deluxe-air
- **Hood Lock Release:** Handle located on LH side under instrument panel
- **Instrument Cluster Bezel:** Black crackle finish with bright trim
- **Instruments:**
Gages: Speedometer, odometer with trip odometer, fuel, volt-meter, oil pressure and engine temperature
Switches: Main, for control of exterior lights, instrument cluster lights, and interior lights; multi-function switch on steering column for direction signals by moving lever up or down (includes lane change position), headlamp beams by pulling lever toward driver, windshield wiper by turning band marked "WIPER" toward or away from driver, and windshield washer by pushing in the lever knob; ignition with key-in warning buzzer; hazard warning; heater fan
Warning lights: Seat belt, service-parking brake, direction/hazard signal, high beam
- **Instrument Panel Control Knobs:** Soft black plastic (except heater and wiper-washer controls) with white graphic identification
- **Instrument Panel Pad:** Color-keyed, energy-absorbing foam type with grained vinyl skin; has black crackle finish applique on RH side with bright, black, and silver trim and bright "Scottsdale/High Sierra" nameplate
- **Insulation and Sound Deadening Material:** Dash (firewall), under floor mats and under front seat at center (includes extra-thick insulation in center seat area when optional seat is ordered), under cowl panel and on back of headliner
- **Lights:** Instrument cluster and cab interior lights
- **Mirror, Rearview:** 10" prismatic with soft vinyl rim
- **Pillar Trim Panels:** Color-keyed molded plastic on windshield pillars and center door pillars
- **Radio:** AM, with fixed mast antenna
- **Seat:** Full-width, full-depth foam bench-type front seat only with choice of textured velour custom cloth/vinyl trim or vinyl pigskin grained trim. See Interior and Exterior Color Selection Chart for color and trim availability
- **Seat Belts:** Front only; non-detachable combination lap and shoulder belts for outboard positions with automatic-locking retractors on lap belts; emergency-locking retractors on shoulder belts, and switch in driver's lap belt retractor for buzzer warning system; lap belt with manual adjustment for center position. All seat belts are color-keyed with pushbutton type buckles
- **Sill Plates:** Door-opening protection and floor mat retention; bright metal; full-length for front side and rear side doors, and full-width front and rear for rear compartment platform
- **Spare Tire Carrier:** LH rear side
- **Spare Tire Cover:** Color-keyed carpet
- **Steering Wheel and Column:** 16" black, soft plastic wheel with 2 spokes; black energy-absorbing steering column with anti-theft locking feature
- **Stowage Box:** In RH side of instrument panel; door has bright turn-type latch release
- **Sunshades:** RH and LH padded; mystic colored to match headliner
- **Trim Panels:** Color-keyed, embossed molded plastic on side doors with integral armrests; painted steel panels on rear quarter areas

R/V SUBURBAN

SILVERADO/SIERRA CLASSIC MODEL OPTION—RPO YE9

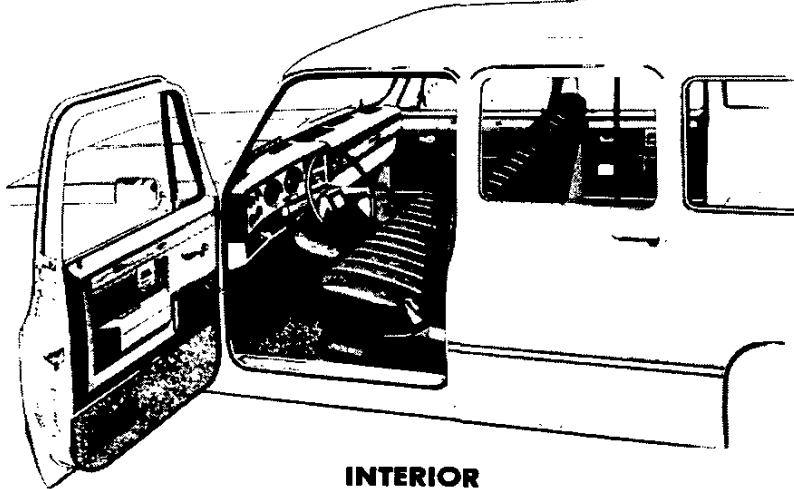
This option includes all Scottsdale/High Sierra standard model items plus the additions or substitutions listed below



GMC model shown (Chevrolet model available)

EXTERIOR

- **Bright Appearance Items:** "Silverado/Sierra Classic" nameplates, with series designation, on front fenders
Chrome-trimmed grille and headlamp bezels (Chevrolet models only)
Body side and rear door (or tailgate) moldings with black paint trim
- **Bright wheel opening lip moldings**
- **Body-to-Fender Insulators**
- **Grille and Headlamp Bezel Paint:** Dark argent (Chevrolet); argent/dark argent (GMC)
- **Hood Insulator**
- **Special Headlamps:** Rectangular; dual halogen RH and LH
- **Wheels:** Rally type (Series 10/1500 only)

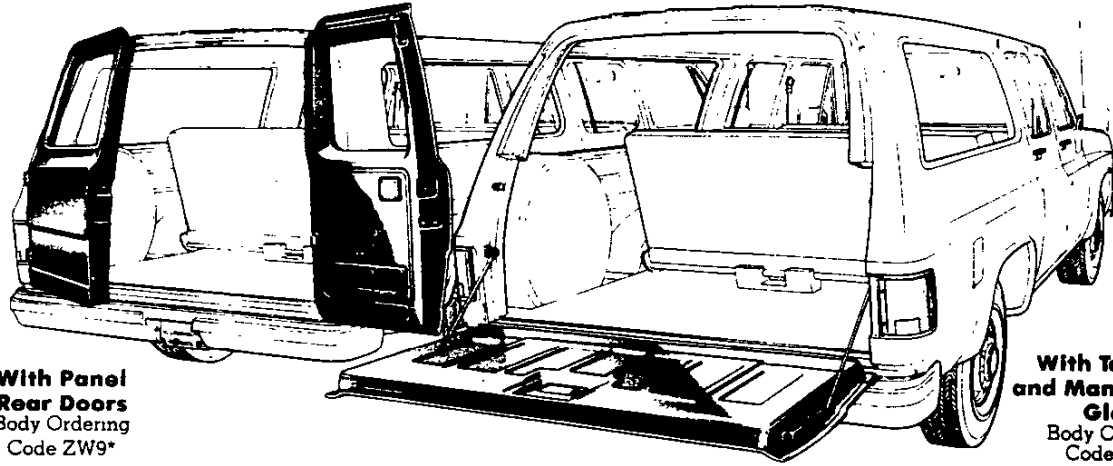


INTERIOR

- **Assist Straps:** RH front, RH and LH center seat.
- **Bright Appearance Items:** "Silverado/Sierra Classic" nameplate on instrument panel pad
MM4 four-speed transmission shift lever (R1-2 models only)
Trim on side door trim panels, and on horn button
- **Coat Hooks:** LH and RH in 3rd seat area
- **Cowl Panel Trim:** Color-keyed molded plastic on entire surface of cowl side panels
- **Floor Covering:** Color-keyed carpeting; front seat area (also in center and rear seat areas and on wheel housings when center seat is ordered)
- **Garnish Moldings:** Color-keyed molded plastic for body sides (in side rear window areas), lower rear lock pillars, and upper rear doors
- **Headliner:** Full length, color-keyed, foam backed cloth; includes matching retainer moldings
- **Headlamp Warning Buzzer**
- **Instrument Cluster:** Voltmeter, engine temperature gage, and oil pressure gage replace warning lights; includes pewter-toned brush-finished bezel
- **Instrument Panel Pad Applique:** Pewter-toned brushed finish with bright, black, and silver trim
- **Insulation:** Extra-thick front compartment floor insulators, including full-width insulator under front seat (also in center and rear seat areas when optional center seat is ordered), on back of headliner, and on body side trim panels
- **Power Door Locks**
- **Seats:** Available at extra cost: High back bucket seats are available in Custom Vinyl or Custom Cloth (includes console). See Interior and Exterior Color Selection Chart for color and trim availability
- **Trim Panels:** Color-keyed molded plastic door trim panels (with door closing assist strap and vinyl stowage pockets; on front door units only); includes pewter-toned brush-finished upper decorative inserts having bright, black, and silver borders, cloth inserts in armrest area plus carpeting on lower portions. Vinyl-covered color-keyed molded plastic body side trim panels (in rear quarter areas) with carpet trim. Vinyl-covered color-keyed hardboard lower rear door trim panels with carpet trim. (Color-keyed molded plastic tailgate trim panel with carpet trim for models with optional tailgate)
- **Steering Wheel:** Bright trim on horn button
- **Visor Mirror:** On RH sun visor

NOTES

R/V SUBURBAN REAR DOOR TYPES



**With Panel
Rear Doors**
Body Ordering
Code ZW9*

**With Tailgate
and Manual Drop
Glass**
Body Ordering
Code E55*

Suburban models have 4 side doors, two front and two rear. Front side doors are equipped with drop-glass and ventipane assemblies; the rear side doors have a drop-glass in the forward portion and fixed glass in the rear portion. The rear quarter windows have fixed glass.

All Suburbans ordered with Body Ordering Code ZW9 have panel-type rear doors incorporating fixed glass, positive fork-cam latches, and an outside key lock. A 2-position, strap-type check on each door permits either a 118- or 162-degree door opening, depending on how the retaining pin is positioned; full door opening of 172-degrees is obtained by removing the retaining pin.

Suburbans ordered with Body Ordering Code E55 have a tailgate with a manually-controlled curved drop glass. Operation of the window is through an articulated crank-type regulator handle on the tailgate outer panel; a key lock cylinder is concealed in the regulator handle, and must be unlocked before the window can be lowered. After the window is lowered, the tailgate can be lowered by moving the release handle at the upper center of the tailgate inner panel. When the tailgate is open, it is supported by reel-type cables. Embossments on the tailgate inner panel facilitate loading of large objects. An optional electric tailgate window is available by ordering RPO A33.

*Both models shown with optional folding center and removable rear seats

CUSTOM OPTIONS

Chromed Bumpers with Rub Strips (RPO VE5)



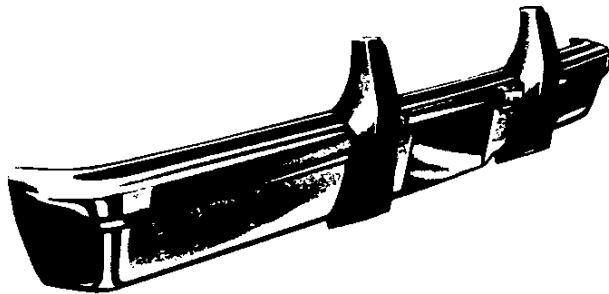
Chromed bumpers with rub strips are available optionally on all Suburban models.

Custom Trim Moldings (RPO B84, YG1)

Body side and rear trim moldings (RPO B84) are black plastic with bright trim and are available for standard Suburban models. They are included in the Custom Molding Package (RPO YG1) for standard Scottsdale/High Sierra models which also includes bright wheel opening moldings with black paint trim and bright trim for front side marker lamps and taillamps.

(RPO B85, YG3)

Bright plastic body side and rear moldings with black paint trim (RPO B85) are available for standard Scottsdale/High Sierra Suburban models. They are included in the Deluxe Molding Package (RPO YG3) which also includes the wheel opening moldings and other bright lamp trim items described above for RPO YG1.



Chromed Front Bumper Guards (RPO V31)

Chromed front bumper guards with rub strips are available optionally on Suburban models. Not available when chromed bumpers with rub strips are ordered.

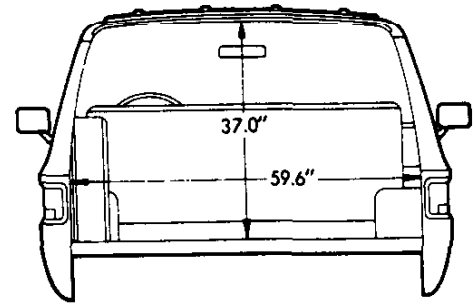
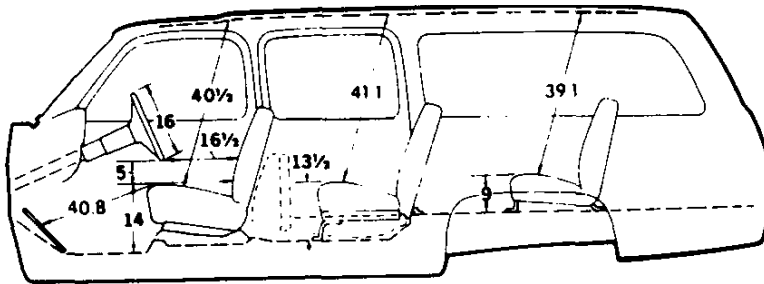


Wheel Covers

Stainless steel wheel covers are available on all Suburban models. The front units for V10/1500-20/2500 4WD models have a cut-out at the center to clear the axle hubs.

R/V SUBURBAN

DIMENSIONS



GLASS AREA (Sq. in.)

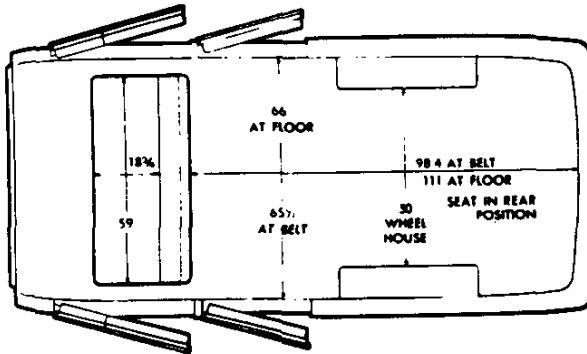
Windshield 1421
 Front side door, including
 ventipane (each side) 470
 Rear side door (each side) 488

Side rear window (each side) ... 1074
 Rear:
 ZW9 panel doors (total) 654
 E55 tailgate 1041

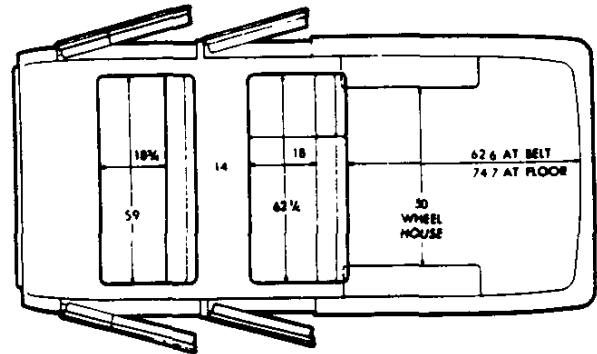
SEATING ARRANGEMENTS

Note: Front Reclining Bucket Seats also available

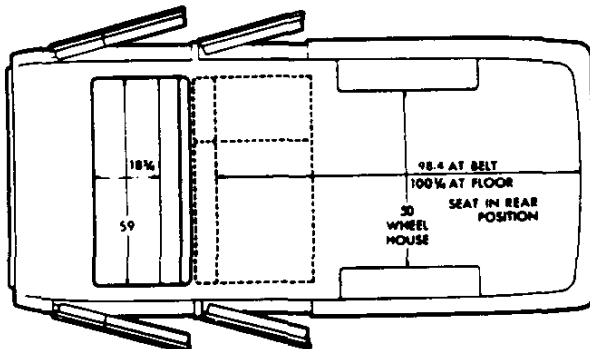
Front Seat
 Standard full-depth foam front seat



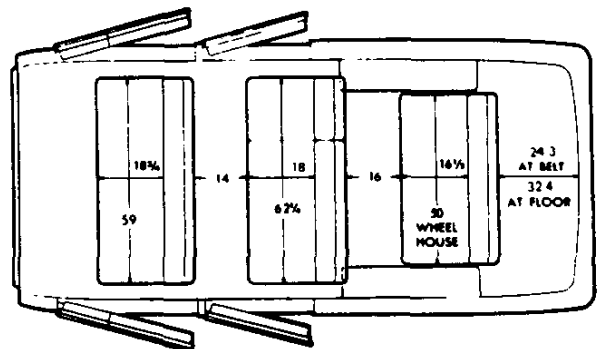
Front and Folding Center Seats
 Standard front and RPO AT5 folding center seats



Front, Folding Center and Rear Removable Seats
 Standard front, RPO AT5 folding center and
 RPO AS3 removable rear seats



Front and Folding Center Seats
 Standard front and RPO AT5 folding center seats
 (Center seats shown in folded position)



R/V SUBURBAN

INTERIOR AND EXTERIOR COLOR AVAILABILITY CHART WITH ZY1 AND ZY3 TWO-TONE PAINT

Please Note: Below are the interior trim color and exterior paint combinations recommended by Chevrolet/GMC. The only available color code 1/color code 2 exterior color combinations are those shown in the chart below; however, any available interior trim color may be ordered with one of these exterior color combinations if that particular combination is desired by the customer.

TRIM LEVEL Seat Type	Decor	INTERIOR COLORS				
		Blue	Burgundy	Saddle	Slate Gray	
SCOTTSDALE/HIGH SIERRA	Std	XDD1		XSS1		
Custom Vinyl Bench Seat		LDD1		LSS1		
SILVERADO/SIERRA CLASSIC	YE9	XDD1	XEE1	XSS1		
Custom Vinyl Bench Seat		LDD1	LEE1	LSS1	LTT1	
Custom Cloth Bench Seat		XDD6		XSS6		
Custom Vinyl Reclining Bucket		LDD6		LSS6	LTT6	
Custom Cloth Reclining Bucket						
EXTERIOR COLORS w/ZY1 or ZY3 PAINT	Color Code 1	Color Code 2	RECOMMENDED INTERIOR TRIM COLOR			
BLACK, MIDNIGHT	19	19		•	•	•
Blue, Aspen (Metallic)	19	24	•			•
Gold, Nevada (Metallic)	19	67			•	
Gray, Steel (Metallic)	19	90		•		•
Red, Apple	19	72		•		•
Tan, Doeskin	19	61	•		•	
BLUE, ASPEN (Metallic)	24	24	•			•
Black, Midnight	24	19	•			•
Blue, Midnight	24	29	•			•
Gray, Steel (Metallic)	24	90	•			•
White, Frost	24	12	•			•
BLUE, MIDNIGHT	29	29	•			•
Blue, Aspen (Metallic)	29	24	•			•
Gold, Nevada (Metallic)	29	67			•	
Gray, Steel (Metallic)	29	90	•			•
Tan, Doeskin	29	61			•	
White, Frost	29	12	•			•
BROWN, WOODLANDS (Metallic)	39	39			•	
Black, Midnight	39	19			•	
Gold, Nevada (Metallic)	39	67			•	
Tan, Doeskin	39	61			•	
EMERALD (Metallic)	44	44			•	
Gold, Nevada (Metallic)	44	67			•	
Gray, Steel (Metallic)	44	90			•	•
Tan, Doeskin	44	61			•	
GOLD, NEVADA (Metallic)	67	67			•	
Black, Midnight	67	19			•	
Blue, Midnight	67	29			•	
Brown, Woodlands (Metallic)	67	39			•	
Emerald (Metallic)	67	44			•	
Red, Apple	67	72		•		•
Tan, Doeskin	67	61			•	
GRAY, STEEL (Metallic)	90	90	•	•		•
Black, Midnight	90	19		•		•
Blue, Aspen (Metallic)	90	24	•			•
Blue, Midnight	90	29	•			•
Emerald (Metallic)	90	44			•	•
Red, Apple	90	72		•		•
White, Frost	90	12		•		•
RED, APPLE	72	72		•	•	
Black, Midnight	72	19		•		•
Gold, Nevada (Metallic)	72	67			•	
Gray, Steel (Metallic)	72	90		•		•
Tan, Doeskin	72	61			•	
White, Frost	72	12		•		•
TAN, DOESKIN	61	61		•	•	
Black, Midnight	61	19		•		•
Blue, Midnight	61	29			•	
Brown, Woodlands (Metallic)	61	39			•	
Gold, Nevada (Metallic)	61	67		•		•
Red, Apple	61	72		•		•
White, Frost	61	12		•		•
WHITE, FROST	12	12	•	•	•	•
Black, Midnight	12	19		•		•
Blue, Aspen (Metallic)	12	24	•			•
Gold, Nevada (Metallic)	12	67			•	
Gray, Steel (Metallic)	12	90	•	•		•
Red, Apple	12	72		•		•
Tan, Doeskin	12	61			•	

R/V SUBURBAN

INTERIOR AND EXTERIOR COLOR AVAILABILITY CHART

WITH ZY5 EXTERIOR DECOR PACKAGE

Please Note: Below are the interior trim color and exterior paint combinations recommended by Chevrolet/GMC. They are the only available interior and exterior combinations allowed.

TRIM LEVEL Seat Type	Decor	INTERIOR COLORS			
		Blue	Burgundy	Saddle	Slate Gray
SCOTTSDALE/HIGH SIERRA Custom Vinyl Bench Seat Custom Cloth Bench Seat	Std.	XDD1		XSS1	
		LDD1		LSS1	
SILVERADO/SIERRA CLASSIC Custom Vinyl Bench Seat Custom Cloth Bench Seat Custom Vinyl Reclining Bucket Custom Cloth Reclining Bucket	YE9	XDD1	XEE1	XSS1	
		LDD1	LEE1	LSS1	LTT1
		XDD6		XSS6	
		LDD6		LSS6	LTT6

(Interior and Exterior Combinations Shown Are the Only Combinations Available)				STRIPE COLOR	
w/ZY5 PAINT	Color Code 1	Color Code 2			
BLACK, MIDNIGHT/Blue, Aspen (Met)	19	24	●		Light Blue/Dark Blue
BLACK, MIDNIGHT/Gold, Nevada (Met)	19	67		●	Gold/Black
BLACK, MIDNIGHT/Gray, Steel (Met)	19	90		●	Vermillion/Black
BLACK, MIDNIGHT/Gray, Steel (Met)	19	90		●	Silver/Black
BLACK, MIDNIGHT/Red, Apple	19	72		●	Vermillion/Black
BLACK, MIDNIGHT/Tan, Doeskin	19	61		●	Vermillion/Dark Carmine
BLUE, ASPEN (Met)/Black, Midnight	24	19	●		Light Blue/Dark Blue
BLUE, ASPEN (Met)/Blue, Midnight	24	29			Silver/Black
BLUE, ASPEN (Met)/Blue, Midnight	24	29	●		Light Blue/Dark Blue
BLUE, ASPEN (Met)/Gray, Steel (Met)	24	90	●		Light Blue/Dark Blue
BLUE, ASPEN (Met)/Gray, Steel (Met)	24	90		●	Silver/Black
BLUE, ASPEN (Met)/White, Frost	24	12		●	Silver/Black
BLUE, ASPEN (Met)/White, Frost	24	12	●		Light Blue/Dark Blue
BLUE, MIDNIGHT/Blue, Aspen (Met)	29	24	●		Light Blue/Dark Blue
BLUE, MIDNIGHT/Gold, Nevada (Met)	29	67		●	Gold/Black
BLUE, MIDNIGHT/Gray, Steel (Met)	29	90		●	Silver/Black
BLUE, MIDNIGHT/Tan, Doeskin	29	61		●	Gold/Black
BLUE, MIDNIGHT/White, Frost	29	12	●		Light Blue/Dark Blue
BROWN, WOODLANDS (Met)/ Black, Midnight	39	19		●	Vermillion/Black
BROWN, WOODLANDS (Met)/ Gold, Nevada (Met)	39	67		●	Dark Brown/Almond
BROWN, WOODLANDS (Met)/ Tan, Doeskin	39	61		●	Dark Brown/Almond
EMERALD (Met)/Gold, Nevada (Met)	44	67		●	Gold/Black
EMERALD (Met)/Gray, Steel (Met)	44	90		●	Silver/Black
EMERALD (Met)/Tan, Doeskin	44	61		●	Gold/Black
GOLD, NEVADA (Met)/Black, Midnight	67	19		●	Gold/Black
GOLD, NEVADA (Met)/Blue, Midnight	67	29		●	Gold/Black
GOLD, NEVADA (Met)/ Brown, Woodlands (Met)	67	39		●	Dark Brown/Almond
GOLD, NEVADA (Met)/Emerald (Met)	67	44		●	Gold/Black
GOLD, NEVADA (Met)/Red, Apple	67	72		●	Vermillion/Dark Carmine
GOLD, NEVADA (Met)/Red, Apple	67	72		●	Vermillion/Black
GOLD, NEVADA (Met)/Tan, Doeskin	67	61		●	Dark Brown/Almond
GRAY, STEEL (Met)/Black, Midnight	90	19		●	Vermillion/Slate
GRAY, STEEL (Met)/Black, Midnight	90	19		●	Vermillion/Black
GRAY, STEEL (Met)/Blue, Aspen (Met)	90	24		●	Silver/Black
GRAY, STEEL (Met)/Blue, Aspen (Met)	90	24	●		Light Blue/Dark Blue
GRAY, STEEL (Met)/Blue, Aspen (Met)	90	24	●		Light Blue/Dark Blue
GRAY, STEEL (Met)/Blue, Midnight	90	29		●	Silver/Black
GRAY, STEEL (Met)/Blue, Midnight	90	29		●	Silver/Black
GRAY, STEEL (Met)/Emerald (Met)	90	44		●	Vermillion/Black
GRAY, STEEL (Met)/Red, Apple	90	72		●	Vermillion/Black
GRAY, STEEL (Met)/Red, Apple	90	72		●	Vermillion/Slate
GRAY, STEEL (Met)/White, Frost	90	12		●	Vermillion/Black
GRAY, STEEL (Met)/White, Frost	90	12		●	Vermillion/Black
RED, APPLE/Black, Midnight	72	19		●	Vermillion/Black
RED, APPLE/Gold, Nevada (Met)	72	67		●	Vermillion/Dark Carmine
RED, APPLE/Gray, Steel (Met)	72	90		●	Vermillion/Black
RED, APPLE/Gray, Steel (Met)	72	90		●	Vermillion/Slate
RED, APPLE/Tan, Doeskin	72	61		●	Vermillion/Dark Carmine
RED, APPLE/White, Frost	72	12		●	Vermillion/Dark Carmine
TAN, DOESKIN/Black, Midnight	61	19		●	Gold/Black
TAN, DOESKIN/Blue, Midnight	61	29		●	Gold/Black
TAN, DOESKIN/ Brown, Woodlands (Met)	61	39		●	Dark Brown/Almond
TAN, DOESKIN/Gold, Nevada (Met)	61	67		●	Dark Brown/Almond
TAN, DOESKIN/Red, Apple	61	72		●	Vermillion/Dark Carmine
TAN, DOESKIN/White, Frost	61	12		●	Almond/Dark Brown
WHITE, FROST/Black, Midnight	12	19		●	Vermillion/Dark Carmine
WHITE, FROST/Black, Midnight	12	19		●	Silver/Black
WHITE, FROST/Blue, Aspen (Met)	12	24	●		Light Blue/Dark Blue
WHITE, FROST/Gold, Nevada (Met)	12	67		●	Dark Brown/Almond
WHITE, FROST/Gray, Steel (Met)	12	90	●		Light Blue/Dark Blue
WHITE, FROST/Gray, Steel (Met)	12	90		●	Vermillion/Dark Carmine
WHITE, FROST/Gray, Steel (Met)	12	90		●	Silver/Black
WHITE, FROST/Red, Apple	12	72		●	Vermillion/Dark Carmine
WHITE, FROST/Red, Apple	12	72		●	Vermillion/Light Slate
WHITE, FROST/Tan, Doeskin	12	61		●	Dark Brown/Almond

R/V SUBURBAN

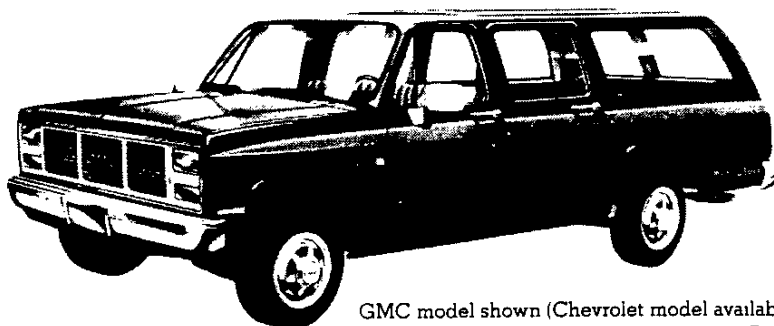
1988

SOLID AND TWO-TONE* EXTERIOR COLOR COMBINATIONS

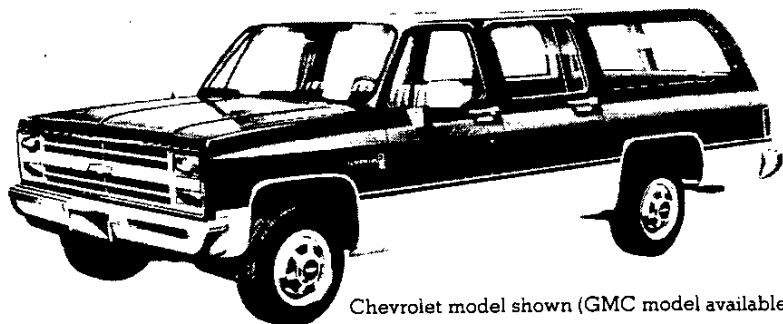
The application of paint for solid and two-tone exterior color combinations is shown below.

SOLID COLOR

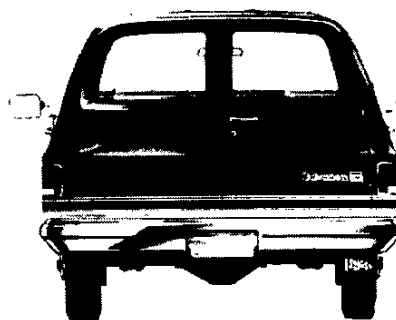
Solid color paint (ZY1) is standard on all models. All painted areas of the body and front end sheet metal are the same color.



GMC model shown (Chevrolet model available)



Chevrolet model shown (GMC model available)



SPECIAL TWO-TONE

Special two-tone (ZY3) paint colors include the YG1 molding package consisting of black vinyl body side and rear moldings with bright trim, bright wheel opening moldings, and bright trim for front side marker lights and tail lights (except with the YG3 molding package or the Silverado/

Sierra Classic Model Option where bright body side and rear moldings with black paint trim are substituted). Color code 1 is applied to the areas above the moldings (including the roof). Color code 2 is applied to the areas below the moldings.

EXTERIOR DECOR PACKAGE

Exterior Decor Package (ZY5) paint colors and trim are available (see Interior and Exterior Color Availability Chart). The package includes the moldings described under *Special Two-Tone*. In addition, it includes dual-tone body side and rear tape decal striping keyed to the exterior body color. This striping is applied to the front fenders, side doors and body sides and rear a few inches above the styling crease line. The areas above the striping and below the molding are painted color code 1. Color code 2 is used between the striping and the molding. A bright spring-loaded, stand-up type hood ornament is included on gasoline engine models.



GMC model shown (Chevrolet model available)

*Optional at extra cost.