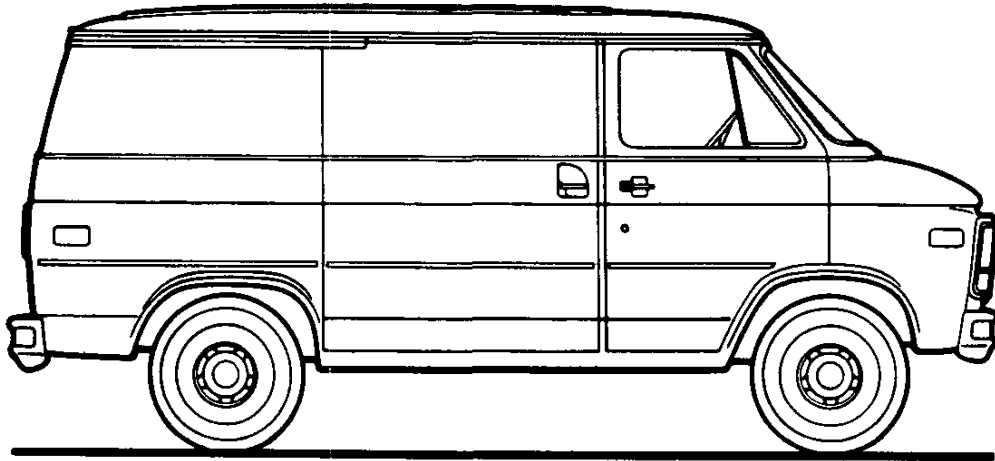


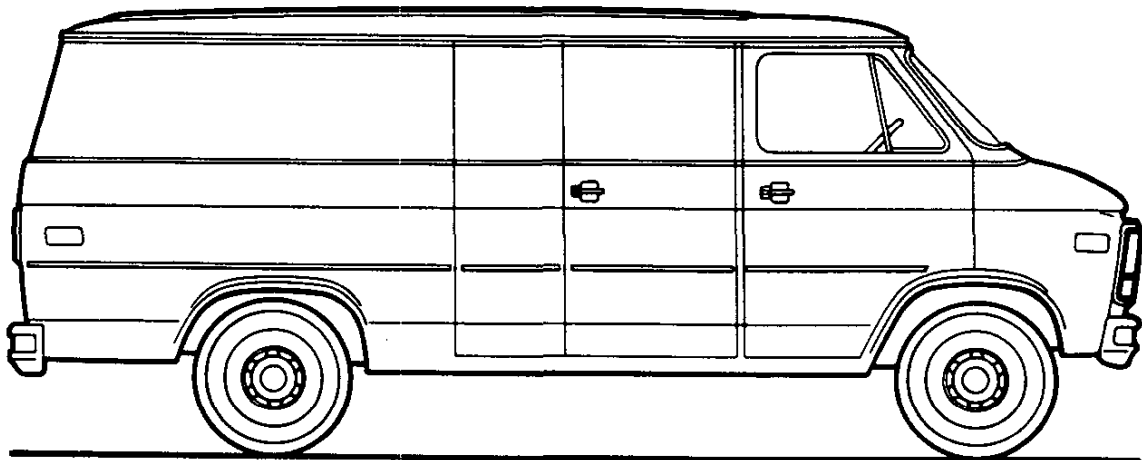
CHEVY VAN/VANDURA

CHEVY VAN/VANDURA MODEL SELECTOR



| SERIES | MODEL NUMBER | | BODY ORDERING CODE | |
|---------------------|--------------|---------|--------------------|---------------|
| | 110" WB | 125" WB | GASOLINE MODELS | DIESEL MODELS |
| G10/1500 | G11005 | G11305 | ZW9 | — |
| G20/2500 | G21005 | G21305 | ZW9 | ZW9/B3J |
| *G30/3500 | — | G31305 | ZW9 | — |
| G30/3500/C6P | — | G31305 | ZW9/C6P | ZW9/C6P/B3J |

*Not available for registration in the State of California.



GASOLINE

CHEVY VAN/VANDURA

STANDARD SPECIFICATIONS

(See Gray Tab Section for Specification Details)

| Series | G10/1500 | G20/2500 |
|-------------------------------------|--|--|
| Engine | 4.3 Liter, 262 EFI V6 | |
| Base Equip. | 11" 124 sq. in. | |
| Clutch | Oiled-paper Element | |
| Air Filter | Throwaway Type | |
| Oil Filter | Single; Aluminized | |
| Exhaust System | See Engine & Cooling Section for specific model applications | |
| Emission Control Systems | | |
| Suspension, Front | Independent; Coil Springs | |
| Capacity | 3400 lb. | 3400 lb. |
| Springs @ Ground | 1310 lb. ea. | 1700 lb. ea. |
| Shock Absorbers | 25mm dia. | 32mm dia. |
| Suspension, Rear | Salisbury Axle; Hypoid Drive; Two-stage Multi-leaf Springs | |
| Axle Capacity | 3500 lb. | 3500 lb. |
| Axle Ratio | 3.08 | 3.42 |
| Springs @ Ground | 1200 lb. ea. | 1700 lb. ea. |
| Shock Absorbers | 25mm dia. | 32mm dia. |
| Brakes | Hydraulic; Self-adjusting | |
| Front | Disc; 11.86" Rotor | Disc; 11.86" Rotor |
| Rear | Drum; 11" x 2" | Drum; 11.15" x 2.75" |
| Booster | Single Diaphragm | Dual Diaphragm |
| Parking | Cable to Rear Wheels | |
| Electrical | 12 Volt; Negative Ground | |
| Battery | 530 CCA♦ @ 0°F | |
| - Freedom Type | 75 min. @ 80°F | |
| - Reserve Capacity | 85 amp. | |
| Delcotron Generator | | |
| Frame | Integral Body-frame | |
| Fuel Tank (nominal capacity) | 22 gal. | |
| Steering Gear Type | Manual; Recirculating Ball Gear | Integral Power |
| Linkage | Parallelogram | |
| Transmission | 4-Speed Manual w/Overdrive | |
| Shift Location | Floor | |
| Tires | (5) P195/75R15 All Seasons Steel Belted Radial | (4) P225/75R15 All Seasons Steel Belted Radial |
| Wheels | (5) Disc 15" x 6" | |

♦CCA-Cold Cranking Amps

CHEVY VAN/VANDURA

DIESEL

STANDARD SPECIFICATIONS

(See Gray Tab Section for Specification Details)

| Series [▲] | ★G20/2500 |
|---|---|
| Engine Base Equip. Clutch Air Filter Oil Filter Oil Cooler Exhaust System Emission Control Systems | 6.2 Liter, 379 Cu. In. V8 Diesel 12", 150 sq. in. Poly-wrapped, Oiled-paper Element Throwaway Type Standard Dual; Aluminized See Engine & Cooling Section for specific model applications |
| Suspension, Front Capacity - 110" WB - 125" WB Springs @ Ground - 110" WB - 125" WB Shock Absorbers | Independent; Coil Springs 3500 lb. 3675 lb. 1750 lb. ea. 1835 lb. ea. 32mm dia. |
| Suspension, Rear Axle Capacity Axle Ratio Springs @ Ground Shock Absorbers | Salisbury Axle; Hypoid Drive; Two-stage Multi-leaf Springs 3500 lb. 3.42 1700 lb. ea. 32mm dia. |
| Brakes Front Rear Booster Parking | Hydraulic; Self-adjusting Disc; 11.86" Rotor Drum; 11.15" x 2.75" Hydraulic Power Cable to Rear Wheels |
| Electrical Battery - Freedom Type - Reserve Capacity Delcotron Generator Engine Block Heater | 12 Volt; Negative Ground Two; 540 CCA♦ ea. @ 0°F. 115 min. ea. @ 80°F. 66 amp. 600 watts, 120 volts |
| Frame | Integral Body-frame |
| Fuel Tank (nominal capacity) | 22 gal. |
| Steering Gear Type | Integral Power |
| Transmission Shift Location | 4-Speed Manual w/Overdrive Floor |
| Tires | (4) P225/75R15 All Seasons Steel Belted Radial |
| Wheels | (5) Disc 15" x 6" |

▲Note: G10/1500 models not available with diesel engines

★Not available for registration in the State of California

♦CCA-Cold Cranking Amps

GASOLINE

CHEVY VAN/VANDURA

STANDARD SPECIFICATIONS

(See Gray Tab Section for Specification Details)

| Series | *G30/3500 | G30/3500/C6P |
|-------------------------------------|--|---------------------------|
| Engine | | |
| Base Equip. | 4.3 Liter, 262 EFI V6 | 5.7 Liter, 350 EFI V8 |
| Air Filter | Oiled-paper Element | |
| Oil Filter | Throwaway Type | |
| Exhaust System | Single; Aluminized | *Dual; Stainless Steel |
| Emission Control Systems | See Engine & Cooling Section for specific model applications | |
| Suspension, Front | Independent; Coil Springs | |
| Capacity | 3900 lb. | 3900 lb. |
| Springs @ Ground | 1700 lb. ea. | 1950 lb. ea. |
| Shock Absorbers | 32mm dia. | 32mm dia. |
| Stabilizer Bar | — | 1.06" dia. |
| Suspension, Rear | Salisbury Axle; Hypoid Drive; Two-stage Multi-leaf Springs | |
| Axle Capacity | 5700 lb. | 5700 lb. |
| Axle Ratio | 3.73 | 3.73 |
| Springs @ Ground | 2100 lb. ea. | 2700 lb. ea. |
| Shock Absorbers | 32mm dia. | 32mm dia. |
| Brakes | Hydraulic; Self-adjusting | |
| Front | Disc; 12.5" Rotor | Disc; 12.5" Rotor |
| Rear | Drum; 13" x 2.5" | Drum; 13" x 2.5" |
| Booster | Dual Diaphragm | Dual Diaphragm |
| Parking | Cable to Rear Wheels | |
| Electrical | 12 Volt; Negative Ground | |
| Battery | 525 CCA♦ @ 0°F. | |
| — Freedom Type | 90 min. @ 80°F. | |
| — Reserve Capacity | 85 amp. | |
| Delcotron Generator | | |
| Frame | Integral Body-frame | |
| Fuel Tank (nominal capacity) | 22 gal. | |
| Steering Gear Type | Integral Power | |
| Transmission | 4-Speed Automatic w/Overdrive | 3-Speed Automatic |
| Shift Location | Steering Column | Steering Column |
| Tires | (4) 8.75R-16.5C (6PR) | (4) 8.75-16.5E (10PR) |
| Wheels | (5) Disc 16.5" x 6.75" | (5) Disc 16.5" x 6.75" |

*Not available for registration in the State of California

*Single; Aluminized for California

♦CCA-Cold Cranking Amps

CHEVY VAN/VANDURA

DIESEL

STANDARD SPECIFICATIONS

(See Gray Tab Section for Specification Details)

| Series [▲] | G30/3500/C6P |
|--|---|
| Engine | 6.2 Liter, 379 Cu. In. V8 Diesel Poly-wrapped, Oiled-paper Element Throwaway Type Standard Dual; Aluminized See Engine & Cooling Section for specific model applications |
| Base Equip. | |
| Air Filter | |
| Oil Filter | |
| Oil Cooler | |
| Exhaust System | |
| Emission Control Systems | |
| Suspension, Front | Independent; Coil Springs |
| Capacity | 3900 lb. |
| Springs @ Ground | 1950 lb. ea. |
| Shock Absorbers | 32mm dia. |
| Stabilizer Bar | 1.06" dia. |
| Suspension, Rear | Salisbury Axle; Hypoid Drive; Two-stage Multi-leaf Springs |
| Axle Capacity | 5700 lb. |
| Axle Ratio | 3.73 |
| Springs, @ Ground | 2700 lb. ea. |
| Shock Absorbers | 32mm dia. |
| Brakes | Hydraulic; Self-adjusting Disc; 12.5" Rotor Drum; 13" x 2.5" Hydraulic Power Cable to Rear Wheels |
| Front | |
| Rear | |
| Booster | |
| Parking | |
| Electrical | 12 Volt; Negative Ground |
| Battery | Two; 550 CCA♦ ea. @ 0°F. 115 min. ea. @ 80°F. 66 amp. 600 watts, 120 volts |
| - Freedom Type | |
| - Reserve Capacity | |
| Delcotron Generator | |
| Engine Block Heater | |
| Frame | Integral Body-frame |
| Fuel Tank (nominal capacity) | 22 gal. |
| Steering Gear Type | Integral Power |
| Transmission | 3-Speed Automatic Steering Column |
| Shift Location | |
| Tires | (4) 8.75-16.5E (10PR) |
| Wheels | (5) Disc 16.5" x 6.75" |

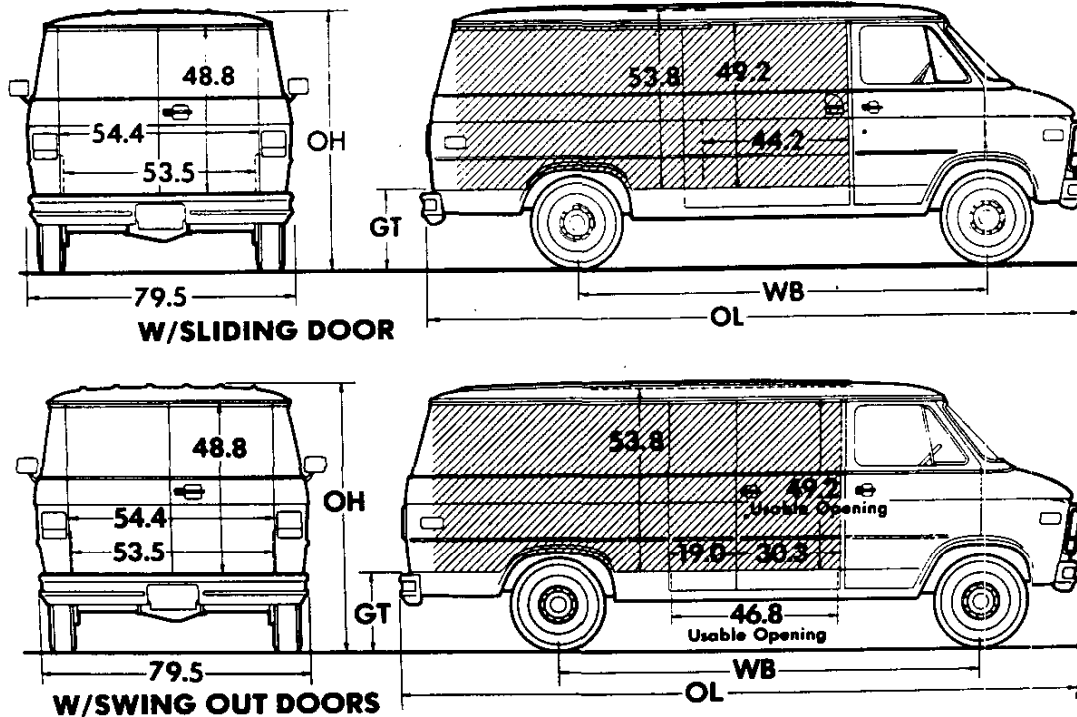
▲Note: G30/3500 models without C6P not available with diesel engine.

♦CCA-Cold Cranking Amps

GASOLINE

CHEVY VAN/VANDURA

Body Ordering Codes:
Chevy Van/Vandura—ZW9

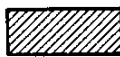


Side slide-in opening clearance 44.2" with sliding door; 46.8" with swing out doors; max. box cargo height 49.2" with standard front passenger seat.

Rear slide-in opening clearance 52" with spare tire in position or 53.5" with spare tire removed; height 48.8".

Sign Panel Area (side)

110" WB—51¼" x 94"
125" WB—51¼" x 118¼"



Capacity (cu ft)

110" WB—207
125" WB—260

| Series | Ground Clearance (in)* | |
|--------|------------------------|------|
| | Front | Rear |
| G1 | 6.3 | 6.7 |
| G2 | 7.3 | 7.3 |
| G3 | 9.0 | 7.0 |

| Model | Engine No. Cyl. | Dimensions (in)* | | | | Curb Weight (lb) | | | Model Weight (lb)* | | |
|------------------------|-----------------|------------------|-------|------|------|------------------|------|-------|--------------------|------|-------|
| | | WB | OL | OH | GT | Front | Rear | Total | Front | Rear | Total |
| G10/1500 SERIES | | | | | | | | | | | |
| G11005 | 6 | 110 | 178.2 | 79.4 | 25.0 | 2100 | 1608 | 3708 | 2206 | 1652 | 3858 |
| G11305 | 6 | 125 | 202.2 | 79.2 | 24.6 | 2151 | 1704 | 3855 | 2262 | 1743 | 4005 |
| G20/2500 SERIES | | | | | | | | | | | |
| G21005 | 6 | 110 | 178.2 | 79.8 | 25.4 | 2168 | 1623 | 3791 | 2274 | 1667 | 3941 |
| G21305 | 6 | 125 | 202.2 | 79.5 | 25.4 | 2215 | 1719 | 3934 | 2326 | 1758 | 4084 |
| G30/3500 SERIES | | | | | | | | | | | |
| G31305▲ | 6 | 125 | 202.2 | 81.9 | 28.0 | 2426 | 1997 | 4423 | 2537 | 2036 | 4573 |
| G31305 (W/C6P) | 8 | 125 | 202.2 | 81.9 | 28.0 | 2426 | 1997 | 4423 | 2537 | 2036 | 4573 |

*Dimensions with standard equipment, unloaded.

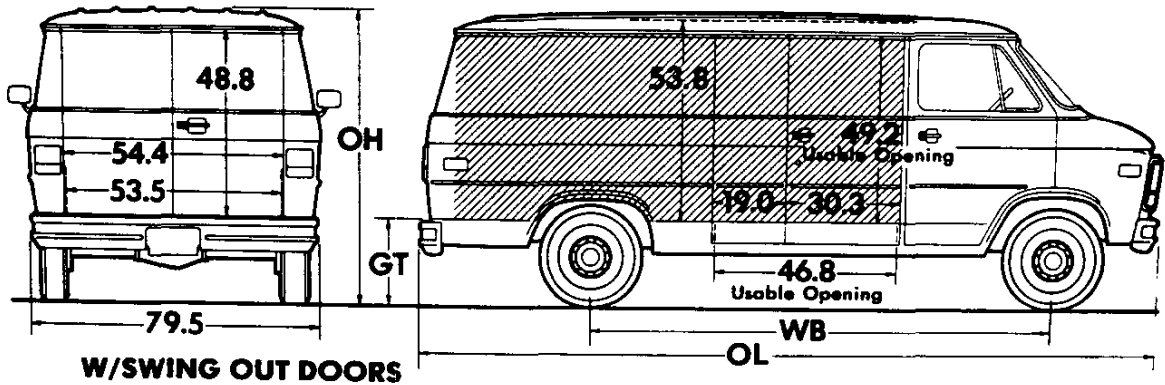
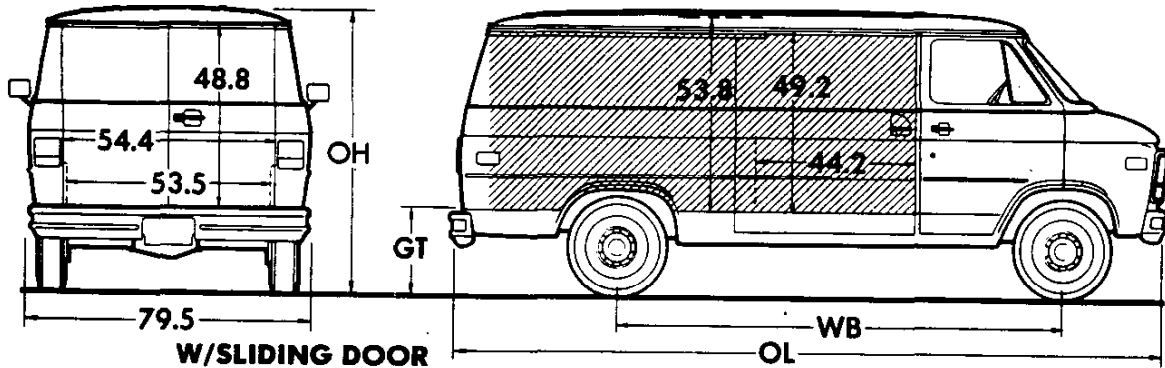
*Model Weight includes Curb Weight plus occupants (standard seating capacity x 150 lb). Total Model Weight may vary as much as ±50 lbs. to allow for production build variation.

▲ Not available for registration in the State of California.

CHEVY VAN/VANDURA

Body Ordering Codes:
Chevy Van/Vandura—ZW9/B3J

DIESEL

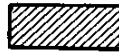


Side slide-in opening clearance 44.2" with sliding door; 46.8" with swing out doors; max. box cargo height 49.2" with standard front passenger seat.

Rear slide-in opening clearance 52" with spare tire in position or 53.5" with spare tire removed; height 48.8"

Sign Panel Area (side)

110" WB—51½" x 94"
125" WB—51½" x 118½"



Capacity (cu ft)

110" WB—207
125" WB—260

| Series | Ground Clearance (in)* | |
|--------|------------------------|------|
| | Front | Rear |
| G2 | 7.3 | 7.3 |
| G3 | 9.0 | 7.0 |

| Model | Engine No. Cyl. | Dimensions (in)* | | | | Curb Weight (lb) | | | Model Weight (lb)* | | |
|-------|-----------------|------------------|----|----|----|------------------|------|-------|--------------------|------|-------|
| | | WB | OL | OH | GT | Front | Rear | Total | Front | Rear | Total |

G20/2500 SERIES

| | | | | | | | | | | | |
|---------------|---|-----|-------|------|------|------|------|------|------|------|------|
| G21005 | 8 | 110 | 178.2 | 79.8 | 25.4 | 2561 | 1688 | 4249 | 2667 | 1732 | 4399 |
| G21305 | 8 | 125 | 202.2 | 79.5 | 25.4 | 2598 | 1772 | 4370 | 2709 | 1811 | 4520 |

G30/3500 SERIES

| | | | | | | | | | | | |
|-----------------------|---|-----|-------|------|------|------|------|------|------|------|------|
| G31305 (W/C6P) | 8 | 125 | 202.2 | 81.9 | 28.0 | 2736 | 2037 | 4773 | 2847 | 2076 | 4923 |
|-----------------------|---|-----|-------|------|------|------|------|------|------|------|------|

*Dimensions with standard equipment, unloaded.

*Model Weight includes Curb Weight plus occupants (standard seating capacity x 150 lb). Total Model Weight may vary as much as ±50 lbs. to allow for production build variation.

CHEVY VAN/VANDURA

POWER TEAMS

ALL STATES

G10/1500 SERIES

POWER TEAMS (MUST ORDER ENGINE, TRANSMISSION AND REAR AXLE)

(Consult GVWR Selector and Tire Chart to insure tire capacity and availability)

| ENGINE | TRANSMISSION | | AXLES | | | GVWR |
|---|--------------|-------|-------|------|------|-----------|
| | 4-SP | AUTO | 3.08 | 3.42 | 3.73 | |
| W/NA5 STANDARD EMISSION EQUIPMENT | | | | | | |
| LB4 V6 4.3 Liter (262 Cu In)-EFI | MM7 | MX0 | — | *GQ1 | *GT4 | ALL |
| | | | — | GQ1 | GT4 | N/A 6000 |
| | MM7 | MX1 | GQ1 | *GU6 | — | 4900 |
| | | MX1 | #GQ1 | *GU6 | — | 5350/5600 |
| | | | — | — | GQ1 | 6000 |
| L03 V8 5.0 Liter (305 Cu In)-EFI | MM7 | MX0/1 | GQ1 | GU6 | — | 4900 |
| | | | — | GQ1 | — | ALL |
| | MM7 | MX0/1 | #GQ1 | GU6 | — | 5350/5600 |
| | | MX0/1 | GQ1 | GU6 | — | 6000 |
| | | | | | | |
| W/NA6 HIGH ALTITUDE EMISSION EQUIPMENT | | | | | | |
| LB4 V6 4.3 Liter (262 Cu In)-EFI | MM7 | MX0 | — | *GQ1 | *GT4 | ALL |
| | | | — | GQ1 | GT4 | N/A 6000 |
| | MM7 | MX1 | — | *GQ1 | — | ALL |
| L03 V8 5.0 Liter (305 Cu In)-EFI | MM7 | | — | — | GQ1 | 6000 |
| | | | — | GQ1 | — | ALL |
| | MM7 | MX1 | — | GQ1 | GT4 | ALL |
| | | MX0 | GQ1 | GU6 | — | 4900 |
| | | MX0 | #GQ1 | GU6 | — | 5350/5600 |
| | MX0 | — | GQ1 | — | 6000 | |
| W/YF5 CALIFORNIA EMISSION REQUIREMENTS | | | | | | |
| LB4 V6 4.3 Liter (262 Cu In)-EFI | MM7 | | — | GQ1 | GT4 | N/A 6000 |
| | | | — | *GQ1 | *GT4 | N/A 6000 |
| | MM7 | | — | — | GQ1 | 6000 |
| L03 V8 5.0 Liter (305 Cu In)-EFI | MM7 | MX0 | — | — | *GQ1 | 6000 |
| | | | — | GQ1 | — | 4900/6000 |
| | MM7 | MX0 | #GQ1 | — | — | 5350/5600 |

#With G80 Locking Differential Reqs J55 Brakes

*Reqs KC4 Cooling

CHEVY VAN/VANDURA

POWER TEAMS

ALL STATES

G20/2500 SERIES

POWER TEAMS (MUST ORDER ENGINE, TRANSMISSION AND REAR AXLE)

(Consult GVWR Selector and Tire Chart to insure tire capacity and availability)

| ENGINE | TRANSMISSION | | AXLES | | | GVWR |
|---|--------------|------|-------|------|------|------|
| | 4-SP - | AUTO | 3.08 | 3.42 | 3.73 | |
| W/NA5 STANDARD EMISSION EQUIPMENT | | | | | | |
| LB4 V6 4.3 Liter (262 Cu In)-EFI | MM7 | MX0 | — | #GQ1 | %GT4 | 6600 |
| | | | — | — | @GQ1 | 6600 |
| L03 V8 5.0 Liter (305 Cu In)-EFI | MM7 | MX1 | GQ1 | #GU6 | — | 6600 |
| | | MX0 | GQ1 | GU6 | §GT4 | 6600 |
| *L05 V8 5.7 Liter (350 Cu In)-EFI | | MX0 | — | GQ1 | @GT4 | 6600 |
| LH6 Diesel 6.2 Liter V8 (379 Cu In)(Reqs B3J) | MM7 | | GQ1 | GU6 | §GT4 | 6600 |
| | | | — | GQ1 | — | 6600 |
| W/NA6 HIGH ALTITUDE EMISSION EQUIPMENT | | | | | | |
| LB4 V6 4.3 Liter (262 Cu In)-EFI | MM7 | MX0 | — | #GQ1 | %GT4 | 6600 |
| | | | — | — | @GQ1 | 6600 |
| L03 V8 5.0 Liter (305 Cu In)-EFI | MM7 | MX1 | — | #GQ1 | — | 6600 |
| | | MX0 | GQ1 | GU6 | — | 6600 |
| *L05 V8 5.7 Liter (350 Cu In)-EFI | | | — | GQ1 | @GT4 | 6600 |
| | | | — | GQ1 | — | 6600 |
| LH6 Diesel 6.2 Liter V8 (379 Cu In)(Reqs B3J) | MM7 | | GQ1 | GU6 | §GT4 | 6600 |
| | | | — | GQ1 | — | 6600 |
| W/YF5 CALIFORNIA EMISSION REQUIREMENTS | | | | | | |
| LB4 V6 4.3 Liter (262 Cu In)-EFI | MM7 | | — | — | @GQ1 | 6600 |
| | | MX0 | — | #GQ1 | %GT4 | 6600 |
| L03 V8 5.0 Liter (350 Cu In)-EFI | | MX0 | GQ1 | — | — | 6600 |
| *L05 V8 5.7 Liter (350 Cu In)-EFI | | MX0 | GQ1 | GU6 | §GT4 | 6600 |

§Reqs 282 Trailering Special; N/A G80 Locking Differential.

%N/A G80 Locking Differential; Reqs KC4 Cooling.

#Reqs KC4 Cooling

*G21305 Only

@N/A G80 Locking Differential

CHEVY VAN/VANDURA

POWER TEAMS

ALL STATES

G30/3500 SERIES

POWER TEAMS (MUST ORDER ENGINE, TRANSMISSION AND REAR AXLE) (Consult GVWR Selector and Tire Chart to insure tire capacity and availability)

| ENGINE | TRANSMISSION | AXLES | | | GVWR |
|---|--------------|-------|------|------|------|
| | | 3.42 | 3.73 | 4.10 | |
| W/NA5 STANDARD OR NA6 HIGH ALTITUDE EMISSION EQUIPMENT | | | | | |
| LB4 V6 4.3 Liter (262 Cu In)-EFI (N/A C6P) | MX0 | — | GQ1 | — | 7100 |
| L05 V8 5.7 Liter (350 Cu In)-EFI (Reqs C6P) | MX1 | — | GQ1 | GT5 | 8600 |
| ■ LL4 Diesel 6.2 Liter V8 (379 Cu In) (Reqs C6P and B3J) | MX1 | — | GQ1 | GT5 | 8600 |
| W/YF5 CALIFORNIA EMISSION REQUIREMENTS | | | | | |
| L05 V8 5.7 Liter (350 Cu In)-EFI (Reqs C6P) | MX1 | — | GQ1 | GT5 | 8600 |
| ■ LL4 Diesel 6.2 Liter V8 (379 Cu In) (Reqs C6P and B3J) | MX1 | — | GQ1 | GT5 | 8600 |

- High Altitude Emission Equipment (FOR EXHAUST SMOKE REDUCTION PURPOSES AT HIGH ALTITUDE:
NOT REQUIRED TO SATISFY HIGH ALTITUDE REGULATIONS)(REQS LL4 ENG)

CHEVY VAN/VANDURA GVWR SELECTOR—ALL STATES

G10/1500 SERIES

| GVW Rating (lbs) | †GAWR (lbs) | | Minimum Equipment Required for GVW Rating | | |
|------------------|-------------|------|---|------|---|
| | Front | Rear | Tire Capacity (lbs ea) | | Chassis Equipment |
| | | | Front | Rear | |
| 4900 | 2620 | 2400 | 1342 | 1342 | Standard |
| 5350 | 2684 | 2684 | 1342 | 1342 | HD Front Springs (F60); HD Rear Springs (G50); Power Steering (N40) |
| 5600 | 2906 | 2906 | 1453 | 1453 | |
| 6000 | 3166 | 3166 | 1583 | 1583 | HD Front Springs (F60); HD Rear Springs (G50); HD Power Brakes (J55); Power Steering (N40) |

†GAWR's shown are the maximum for each axle with equipment listed. Other GAWR's are available, and they are determined as the minimum capacity of either axle, springs or tires.

FRONT AND REAR TIRE AVAILABILITY CHART—ALL STATES

G10/1500 SERIES

Spare tire to match either front or rear tires must be ordered

| Description | Capacity (lbs ea) | Highway | | On-Off Road | Spare |
|--|-------------------|---------|------|-------------|------------|
| | | Front | Rear | Rear | |
| TUBELESS | | | | | |
| P195/75R15 Steel Belted Radial | 1342 | XAR | YAR | — | ZAR |
| #P205/75R15 Steel Belted Radial | 1453 | XCE | YCE | — YJT | ZCE ZJT |
| #P205/75R15 Whitewall Steel Belted Radial | 1453 | XCG | YCG | — | ZCG |
| #P205/75R15 White Letter Steel Belted Radial | 1453 | XCF | YCF | — | ZCF |
| #P215/75R15 Steel Belted Radial | 1583 | XCU | YCU | — | ZCU |
| #P215/75R15 Whitewall Steel Belted Radial | 1583 | XCV | YCV | — | ZCV |
| #P215/75R15 White Letter Steel Belted Radial | 1583 | XCW | YCW | — | ZCW |

#Requires Power Steering (N40).

ENGINE RATINGS

ALL STATES

| SAE Net Ratings | *4.3 Liter 262 EFI V6 | *5.0 Liter 305 EFI V8 | *5.7 Liter 350 EFI V8 |
|-------------------------|--------------------------|--------------------------|--------------------------|
| Net Horsepower | 150 @ 4000 rpm | 170 @ 4000 rpm | 195 @ 4000 rpm |
| Net Torque, lb-ft | 230 @ 2400 rpm | 255 @ 2400 rpm | 290 @ 2400 rpm |

| SAE Net Ratings | **5.7 Liter 350 EFI V8 | *6.2 Liter 379 V8 Diesel | **6.2 Liter 379 V8 Diesel |
|-------------------------|---------------------------|-----------------------------|------------------------------|
| Net Horsepower | 185 @ 4000 rpm | 130 @ 3600 rpm | 148 @ 3600 rpm |
| Net Torque, lb-ft | 295 @ 2400 rpm | 240 @ 2000 rpm | 259 @ 2000 rpm |

*Models with GVWR up to 8500 lbs.

**Models with GVWR of 8501 lbs and above.

CHEVY VAN/VANDURA

GVWR SELECTOR—ALL STATES

G20/2500 SERIES

| GVWR Rating (lbs) | †GAWR (lbs) | | Minimum Equipment Required for GVWR Rating | | |
|-------------------|-------------|------|--|------|----------------------------|
| | Front | Rear | Tire Capacity (lbs ea) | | Chassis Equipment |
| | | | Front | Rear | |
| 6600 | 3400 | 3400 | 1703 | 1703 | Standard (Gasoline Models) |
| | *3500 | 3400 | 1843 | 1843 | Standard (Diesel Models) |

†GAWR's shown are the maximum for each axle with equipment listed. Other GAWR's are available, and they are determined as the minimum capacity of either axle, springs or tires.

*Front GAWR is 3670 on G21305 model.

FRONT AND REAR TIRE AVAILABILITY CHART—ALL STATES

G20/2500 SERIES

Spare tire to match either front or rear tires is available at extra cost

| Description | Capacity (lbs each) | Highway | | Spare |
|---|---------------------|---------|------|-------|
| | | Front | Rear | |
| TUBELESS (With LB4, L03 or L05 Engine) | | | | |
| P225/75R15 Steel Belted Radial | 1703 | XET | YET | ZET |
| P225/75R15 Whitewall Steel Belted Radial | 1703 | XEU | YEU | ZEU |
| P225/75R15 White Letter Steel Belted Radial | 1703 | XEV | YEV | ZEV |
| TUBELESS (With LH6 Engine) | | | | |
| P235/75R15 Steel Belted Radial | 1843 | XFL | YFL | ZFL |
| P235/75R15 Whitewall Steel Belted Radial | 1843 | XFM | YFM | ZFM |
| P235/75R15 White Letter Steel Belted Radial | 1843 | XFN | YFN | ZFN |

GVWR SELECTOR—ALL STATES EXCEPT CALIFORNIA

G30/3500 SERIES

| GVWR Rating (lbs) | †GAWR (lbs) | | Minimum Equipment Required for GVWR Rating | | |
|-------------------|-------------|------|--|------|-------------------|
| | Front | Rear | Tire Capacity (lbs ea) | | Chassis Equipment |
| | | | Front | Rear | |
| Δ7100 | 3400 | 3980 | 1990 | 1990 | Standard |

ΔRequires LB4 V6 engine.

GVWR SELECTOR—ALL STATES

G30/3500/C6P SERIES

| GVWR Rating (lbs) | †GAWR (lbs) | | Minimum Equipment Required for GVWR Rating | | |
|-------------------|-------------|------|--|------|-------------------|
| | Front | Rear | Tire Capacity (lbs ea) | | Chassis Equipment |
| | | | Front | Rear | |
| 8600 | 3900 | 5360 | 2680 | 2680 | Standard |

†GAWR's shown are the maximum for each axle with equipment listed. Other GAWR's are available, and they are determined as the minimum capacity of either axle, springs or tires.

FRONT AND REAR TIRE AVAILABILITY CHART—ALL STATES

G30/3500 SERIES

Spare tire to match either front or rear tires is available at extra cost

| Description | Capacity (lbs each) | Highway | | Spare |
|--|---------------------|---------|------|-------|
| | | Front | Rear | |
| TUBELESS (Requires LB4 Engine) | | | | |
| 8.75R-16.5C Steel Belted Radial | 1990 | XWU | YWU | ZWU |
| TUBELESS (Requires L05 or LL4 Engine) | | | | |
| 8.75-16.5E Nylon Bias Ply | 2680 | XTH | YTH | ZTH |
| 8.75R-16.5E Steel Belted Radial | 2680 | XVD | YVD | ZVD |

NOTES

CHEVY VAN/VANDURA

THE FOLLOWING EQUIPMENT IS STANDARD ON DIESEL ENGINE MODELS (ALSO SEE STANDARD SPECIFICATIONS PAGES)

- *Low Coolant Sensor*
- Poly-wrapped Paper Element Air Cleaner
- Power Steering
- Engine Block Heater (600 watts, 120 volts)
- Water/fuel separator unit which incorporates a water sensor and sending unit, a fuel filter, a fuel heater and water drain capability
- Hydraulic Power-assisted Brakes
- K81 66-amp Generator
- Engine Oil Cooler (located in radiator tank)
- Dual 540 Cold Cranking Amp/115 min. Reserve Capacity Batteries
- HD Radiator
- Dual Exhaust System
- Warning Lights: Glow Plugs, Water-in-fuel (or fuel filter), and Low Coolant
- Diesel Engine Identification:
 - Fender nameplates
 - LH rear door nameplate
 - "Diesel fuel only" filler cap and label
- Additional Insulation:
 - Fiberglass/aluminum engine cover and engine cover extension insulators
 - Special mastic/fibre front floor insulators
 - Front floor mats which extend under seats
 - Interior compartment dash panel insulation
 - Engine compartment dash panel insulation
 - Hush panels under instrument panel
 - Engine hood insulation
 - Special rubber seal at cowl

CHEVY VAN (4900-lb - 8600-lb GVW)

1988 VEHICLES WITH STANDARD EQUIPMENT

prices shown are effective with vehicles produced on and after January 2, 1988

| Description | Model Number | Body Code | Wheel Base | Factory D&H(a) | List Price | Mfr's Suggested Retail Price★ | Group Number |
|--|--------------|-----------------|------------|----------------|------------|-------------------------------|--------------|
| ◆ 6-Cylinder 4.3 Liter (262 Cu. In.) E.F.I. V6 Gasoline Engine-Engine Ordering Code LB4 | | | | | | | |
| G10 Series | | | | | | | |
| Chevy Van | CG11005 | ZW9 | 110" | N.A. | 10240.00 | 10240.00 | 17 |
| Chevy Van | CG11305 | ZW9 | 125" | N.A. | 10488.00 | 10488.00 | 17 |
| G20 Series | | | | | | | |
| Chevy Van | CG21005 | ZW9 | 110" | N.A. | 10865.00 | 10865.00 | 17 |
| Chevy Van | CG21305 | ZW9 | 125" | N.A. | 11117.00 | 11117.00 | 17 |
| G30 Series | | | | | | | |
| Chevy Van | CG31305 | ZW9 | 125" | .84 | 12594.00 | 12594.84 | 17 |
| ◆ 8-Cylinder 5.7 Liter (350 Cu. In.) E.F.I. V8 Gasoline Engine-Engine Ordering Code L05 | | | | | | | |
| G30 H.D. Series | | | | | | | |
| # H.D. Chevy Van | CG31305 | ZW9 & C6P | 125" | .48 | 12705.00 | 12705.48 | 17 |
| ◆ 8-Cylinder 6.2 Liter (379 Cu. In.) L.D. Diesel V8 Engine-Engine Ordering Code LH6 | | | | | | | |
| G20 Series | | | | | | | |
| Chevy Van | CG21005 | ZW9 & B3J | 110" | N.A. | 13262.00 | 13262.00 | 17 |
| Chevy Van | CG21305 | ZW9 & B3J | 125" | N.A. | 13513.00 | 13513.00 | 17 |
| ◆ 8-Cylinder 6.2 Liter (379 Cu. In.) H.D. Diesel V8 Engine-Engine Ordering Code LL4 | | | | | | | |
| G30 H.D. Series | | | | | | | |
| # H.D. Chevy Van | CG31305 | ZW9 & C6P & B3J | 125" | .48 | 14384.00 | 14384.48 | 17 |

★ Manufacturer's Suggested Retail Prices do not include applicable destination charges, state and local taxes, license fees, optional equipment or special items or services.

◆ Refer to Dealer Order Guide for California Requirements.

Factory D&H is not applicable and will not be reflected in the MSRP when B3D School Bus Chassis is specified.

Please Note: Anyone ordering a vehicle for completion or modification and use as a bus and/or school bus is solely responsible for assuring that such completed vehicle and associated equipment, which might be ordered for the vehicle, comply with all applicable Local, State and Federal Government requirements.

OPTIONS WHEN INSTALLED BY GENERAL MOTORS

prices shown are effective with vehicles produced on and after January 2, 1988

| Description | Option Number | Factory D&H(a) | List Price | Mfr's Suggested Retail Price◇ |
|---|---------------|----------------|----------------------|-------------------------------|
| Seat Trim: (See Interior and Exterior Color Selection Chart for Ordering Information). | | | | |
| V**2 Standard Vinyl Bucket Seats | | | NO ADDITIONAL CHARGE | |
| V**4 Vinyl High Back Bucket Seats | | | | |
| Without A57 Auxiliary Seat | | N.A. | 23.00 | 23.00 |
| With A57 Auxiliary Seat | | N.A. | 43.00 | 43.00 |
| X**4 Custom Vinyl High Back Bucket Seats | | | | |
| Without A57 Auxiliary Seat | | N.A. | 33.00 | 33.00 |
| With A57 Auxiliary Seat | | N.A. | 66.00 | 66.00 |
| Paints, Exterior: (See Interior and Exterior Color Selection Chart for Ordering Information and Paint Application). | | | | |
| Solid | ZY1 | | NO ADDITIONAL CHARGE | |
| Special Two-Tone. Includes B84 Black Body Side Moldings | ZY3 | N.A. | 255.00 | 255.00 |
| Deluxe Two-Tone. Includes B84 Black Body Side Moldings | ZY4 | N.A. | 269.00 | 269.00 |
| Emission Systems: Dealer Note - One of the following emission options must be specified. (See Power Teams Chart for availability and complete specifications). | | | | |
| California Emission Requirements. Not available when NA6 High Altitude Emissions is specified. Includes all testing, equipment and/or certification necessary for registration in the State of California. | YF5 | N.A. | 99.00 | 99.00 |

(a) D & H Charges on vehicle and optional equipment include reimbursement to ordering Division for any tax that it has paid, incurred or agreed to pay thereon.

◇ State and local taxes not included.

CHEVY VAN /VANDURA

OPTIONS WHEN INSTALLED BY GENERAL MOTORS

prices shown are effective with vehicles produced on and after January 2, 1988

| Description | Option Number | Factory D&H(a) | List Price | Mfr's Suggested Retail Price◇ |
|---|---------------|----------------|----------------------|-------------------------------|
| High Altitude Emission Equipment. Not Available when YF5 California Emissions is specified | NA6 | | | |
| | | | NO ADDITIONAL CHARGE | |
| Standard Emission Equipment. Not available when YF5 California or NA6 High Altitude Emissions are specified | NA5 | | | |
| | | | NO ADDITIONAL CHARGE | |
| Engines: (See Power Teams Chart for availability and complete specifications) | | | | |
| Gasoline. | | | | |
| 4.3 Liter (262 Cu. In.) E.F.I. V6. Standard on G1-2-3 Series without C6P H.D. Chassis | LB4 | | | |
| | | | NO ADDITIONAL CHARGE | |
| 5.0 Liter (305 Cu. In.) E.F.I. V8 G1-2 Series only. | L03 | N.A. | 495.00 | 495.00 |
| 5.7 Liter (350 Cu. In.) E.F.I. V8. G2 Series only Standard on G3 Series with C6P H.D. Chassis | L05 | N.A. | 740.00 | 740.00 |
| Diesel. | | | | |
| 6.2 Liter (379 Cu. In.) L.D. V8 Diesel. G2 Series only. Available only when B3J Diesel Equipment is specified. Not available when YF5 California Emission Requirements is specified | LH6 | | | |
| | | | NO ADDITIONAL CHARGE | |
| 6.2 Liter (379 Cu. In.) H.D. V8 Diesel. G3 Series only. Available only when B3J Diesel Equipment and C6P H.D. Chassis is specified | LL4 | | | |
| | | | NO ADDITIONAL CHARGE | |
| Transmissions: | | | | |
| 4-Speed Automatic with Overdrive. | MX0 | N.A. | 425.00 | 425.00 |
| 3-Speed Automatic. | | | | |
| G1-2 Series only. Not available when YF5 California Emissions or B3J Diesel Equipment is specified | MX1 | N.A. | 255.00 | 255.00 |
| G3 series only. Standard on G3 Series. Not available when LB4 4.3 Liter Engine is specified | MX1 | | | |
| | | | NO ADDITIONAL CHARGE | |
| 4-Speed Manual with Overdrive. Standard on G1-2 Series | MM7 | | | |
| | | | NO ADDITIONAL CHARGE | |
| Axles, Rear: (See Power Teams Chart for option number selection, availability and complete specifications) | | | | |
| Optional Ratio | | N.A. | 38.00 | 38.00 |
| Locking Differential | G80 | N.A. | 252.00 | 252.00 |
| Tires: (See Tire Charts for Tire availability) | | | | |
| All rim sizes are 6.00" on G1-2 Series except when N67 or PF3 Wheels are specified. | | | | |
| All rim sizes are 6.75" on G3 Series. | | | | |
| FACTORY D&H IS NOT APPLICABLE AND WILL NOT BE REFLECTED IN THE MSRP WHEN B3D SCHOOL BUS CHASSIS IS SPECIFIED. | | | | |
| TUBELESS | | | | |
| P195/75R15 All Seasons Steel Belted Radial Ply Blackwall (Maximum Capacity 1342-lbs) | | | | |
| Front (Standard) | XAR | | | |
| | | | NO ADDITIONAL CHARGE | |
| Rear (Standard) | YAR | | | |
| | | | NO ADDITIONAL CHARGE | |
| Spare (Standard) | ZAR | | | |
| | | | NO ADDITIONAL CHARGE | |
| P205/75R-15 All Seasons Steel Belted Radial Ply Blackwall. (Maximum Capacity 1453-lbs). Available only when N40 Power Steering is specified. | | | | |
| Front | XCE | N.C. | 24.00 | 24.00 |
| Rear | YCE | N.C. | 24.00 | 24.00 |
| Spare | ZCE | N.C. | 12.00 | 12.00 |
| P205/75R15 All Seasons Steel Belted Radial Ply Whitewall. (Maximum Capacity 1453-lbs). Available only when N40 Power Steering is specified. | | | | |
| Front | XCG | N.C. | 52.00 | 52.00 |
| Rear | YCG | N.C. | 52.00 | 52.00 |
| Spare | ZCG | N.C. | 26.00 | 26.00 |
| P205/75R15 All Seasons Steel Belted Radial Ply White Lettered. (Maximum Capacity 1453-lbs). Available only when N40 Power Steering is specified | | | | |
| Front | XCF | N.C. | 66.00 | 66.00 |
| Rear | YCF | N.C. | 66.00 | 66.00 |
| Spare | ZCF | N.C. | 33.00 | 33.00 |

(a) D & H Charges on vehicle and optional equipment include reimbursement to ordering Division for any tax that it has paid, incurred or agreed to pay thereon.
 ◇ State and local taxes not included.

CHEVY VAN /VANDURA

OPTIONS WHEN INSTALLED BY GENERAL MOTORS

prices shown are effective with vehicles produced on and after January 2, 1988

| Description | Option Number | Factory D&H(a) | List Price | Mfr's Suggested Retail Price ^o |
|---|---------------|----------------------|------------|---|
| Tires: (Continued) | | | | |
| <i>P205/75R15 On-Off Road Steel Belted Radial Ply Blackwall.</i> (Maximum Capacity 1453-lbs). Available only when N40 Power Steering is specified. | | | | |
| Rear | YJT | N.C. | 46.00 | 46.00 |
| Spare | ZJT | N.C. | 23.00 | 23.00 |
| <i>P215/75R15 All Seasons Steel Belted Radial Ply Blackwall.</i> (Maximum Capacity 1583-lbs). Available only when N40 Power Steering is specified. | | | | |
| Front | XCU | N.C. | 50.00 | 50.00 |
| Rear | YCU | N.C. | 50.00 | 50.00 |
| Spare | ZCU | N.C. | 25.00 | 25.00 |
| <i>P215/75R15 All Seasons Steel Belted Radial Ply Whitewall.</i> (Maximum Capacity 1583-lbs). Available only when N40 Power Steering is specified. | | | | |
| Front | XCV | N.C. | 80.00 | 80.00 |
| Rear | YCV | N.C. | 80.00 | 80.00 |
| Spare | ZCV | N.C. | 40.00 | 40.00 |
| <i>P215/75R15 All Seasons Steel Belted Radial Ply White Lettered.</i> (Maximum Capacity 1583-lbs). Available only when N40 Power Steering is specified. | | | | |
| Front | XCW | N.C. | 94.00 | 94.00 |
| Rear | YCW | N.C. | 94.00 | 94.00 |
| Spare | ZCW | N.C. | 47.00 | 47.00 |
| <i>P225/75R15 All Seasons Steel Belted Radial Ply Blackwall</i> (Maximum Capacity 1703-lbs). Not available when B3J Diesel Equipment is specified. | | | | |
| Front (Standard) | XET | NO ADDITIONAL CHARGE | | |
| Rear (Standard) | YET | NO ADDITIONAL CHARGE | | |
| Spare | ZET | N.C. | 137.00 | 137.00 |
| <i>P225/75R15 All Seasons Steel Belted Radial Ply Whitewall</i> (Maximum Capacity 1703-lbs). Not available when B3J Diesel Equipment is specified. | | | | |
| Front | XEU | N.C. | 36.00 | 36.00 |
| Rear | YEU | N.C. | 36.00 | 36.00 |
| Spare | ZEU | N.C. | 155.00 | 155.00 |
| <i>P225/75R15 All Seasons Steel Belted Radial Ply White Lettered</i> (Maximum Capacity 1703-lbs). Not available when B3J Diesel Equipment is specified. | | | | |
| Front | XEV | N.C. | 50.00 | 50.00 |
| Rear | YEV | N.C. | 50.00 | 50.00 |
| Spare | ZEV | N.C. | 161.00 | 161.00 |
| <i>P235/75R15 All Seasons Steel Belted Radial Ply Blackwall</i> (Maximum Capacity 1843-lbs). Available only when B3J Diesel Equipment is specified. | | | | |
| Front | XFL | NO ADDITIONAL CHARGE | | |
| Rear | YFL | NO ADDITIONAL CHARGE | | |
| Spare | ZFL | N.C. | 151.00 | 151.00 |
| <i>P235/75R15 All Seasons Steel Belted Radial Ply Whitewall</i> (Maximum Capacity 1843-lbs). Available only when B3J Diesel Equipment is specified. | | | | |
| Front | XFM | N.C. | 36.00 | 36.00 |
| Rear | YFM | N.C. | 36.00 | 36.00 |
| Spare | ZFM | N.C. | 169.00 | 169.00 |
| <i>P235/75R15 All Seasons Steel Belted Radial Ply White Lettered</i> (Maximum Capacity 1843-lbs). Available only when B3J Diesel Equipment is specified. | | | | |
| Front | XFN | N.C. | 50.00 | 50.00 |
| Rear | YFN | N.C. | 50.00 | 50.00 |
| Spare | ZFN | N.C. | 176.00 | 176.00 |
| <i>8.75-16.5/E Highway Nylon Blackwall</i> (Maximum Capacity 2680-lbs). Available only when C6P H.D. Chassis is specified. | | | | |
| Front (Standard) | XTH | NO ADDITIONAL CHARGE | | |
| Rear (Standard) | YTH | NO ADDITIONAL CHARGE | | |
| Spare | ZTH | .12 | 192.00 | 192.12 |

(a) D & H Charges on vehicle and optional equipment include reimbursement to ordering Division for any tax that it has paid, incurred or agreed to pay thereon.

^o State and local taxes not included.

CHEVY VAN /VANDURA

OPTIONS WHEN INSTALLED BY GENERAL MOTORS

prices shown are effective with vehicles produced on and after January 2, 1988

| Description | Option Number | Factory D&H(a) | List Price | Mfr's Suggested Retail Price ◇ |
|--|---------------|----------------------|------------|--------------------------------|
| Tires: (Continued) | | | | |
| <i>8.75R-16.5/C Highway Steel Belted Radial Ply Blackwall</i> (Maximum Capacity 1990-lbs). Available only when LB4 4.3 Liter Engine is specified. | | | | |
| Front | XWU | NO ADDITIONAL CHARGE | | |
| Rear | YWU | NO ADDITIONAL CHARGE | | |
| Spare | ZWU | .21 | 231.00 | 231.21 |
| <i>8.75R-16.5/E Highway Steel Belted Radial Ply Blackwall</i> (Maximum Capacity 2680-lbs). Available only when C6P H.D. Chassis is specified. | | | | |
| Front | XVD | 1.14 | 150.00 | 151.14 |
| Rear | YVD | 1.14 | 150.00 | 151.14 |
| Spare | ZVD | .69 | 267.00 | 267.69 |

OTHER OPTIONS

Air Conditioning: All-Weather. Includes extra cooling.

Front. Instrument panel mounted. Recommended for front seat area cooling only. With LB4 4.3 Liter Engine available only when KC4 Engine Oil Cooler, N40 Power Steering and MX0 or MX1 Automatic Transmission are specified on G1-2 Series.

| | | | | |
|------------------------------------|-----|------|--------|--------|
| Without B3J Diesel Equipment | C60 | N.A. | 904.00 | 904.00 |
| With B3J Diesel Equipment | C60 | N.A. | 837.00 | 837.00 |

Front and Rear. Front instrument panel mounted and rear overhead systems.

| | | | | |
|------------------------------------|-----|------|---------|---------|
| Without B3J Diesel Equipment | C69 | N.A. | 1499.00 | 1499.00 |
| With B3J Diesel Equipment | C69 | N.A. | 1438.00 | 1438.00 |

Appearance, Deluxe Front: Includes dark argent grille with bright trim. Also includes dual rectangular headlamps ..

| | | | |
|-----|------|--------|--------|
| V22 | N.A. | 124.00 | 124.00 |
|-----|------|--------|--------|

Battery: Heavy-Duty. 630 Cold Cranking Amps, Delco Freedom. Not available when B3J Diesel Equipment is specified. Included when Z82 Trailing Special is specified.

| | | | |
|-----|------|-------|-------|
| UA1 | N.A. | 56.00 | 56.00 |
|-----|------|-------|-------|

Brakes: Heavy-Duty Power. Standard on G2-3 Series

| | | | |
|-----|------|-------|-------|
| J55 | N.A. | 83.00 | 83.00 |
|-----|------|-------|-------|

Bumper Equipment:

Bumpers, Front and Rear. Chromed

| | | | |
|-----|------|-------|-------|
| V37 | N.A. | 76.00 | 76.00 |
|-----|------|-------|-------|

Guards, Front Bumper. Chromed. 125" wheelbase only.

Available only when V37 Front and Rear Bumpers are specified

| | | | |
|-----|------|-------|-------|
| V31 | N.A. | 43.00 | 43.00 |
|-----|------|-------|-------|

Clock: Quartz Electric. Not available when UM6, UM7 or UX1 Radio is specified

| | | | |
|-----|------|-------|-------|
| U35 | N.A. | 41.00 | 41.00 |
|-----|------|-------|-------|

(a) D & H Charges on vehicle and optional equipment include reimbursement to ordering Division for any tax that it has paid, incurred or agreed to pay thereon.

◇ State and local taxes not included.

CHEVY VAN /VANDURA

OPTIONS WHEN INSTALLED BY GENERAL MOTORS

prices shown are effective with vehicles produced on and after January 2, 1988

| Description | Option Number | Factory D&H(a) | List Price | Mfr's Suggested Retail Price◇ |
|---|---------------|----------------------|------------|-------------------------------|
| OTHER OPTIONS | | | | |
| Cooling Systems: Not available when B3J Diesel Equipment is specified | | | | |
| <i>Engine Oil.</i> | | | | |
| G1 Series only. Available only when LB4 4.3 Liter Engine and MX0 or MX1 Automatic Transmission is specified | KC4 | N.A. | 126.00 | 126.00 |
| G2 Series only. Available only when MX0 or MX1 Automatic Transmission is specified. When V8 gasoline Engine is specified, available only when V02 H.D. Radiator and Transmission Oil Cooler is also specified. Included with Z82 Trailing Special | KC4 | N.A. | 126.00 | 126.00 |
| G3 Series only. Standard when LB4 4.3 Liter Engine is specified. Available only when V02 H.D. Radiator and Transmission Oil Cooler is specified. Included with Z82 Trailing Special | KC4 | N.A. | 126.00 | 126.00 |
| Cooling, Heavy-Duty. Not available when C60 Front or C69 Front and Rear Air Conditioning is specified. LB4 4.3 Liter Engine with 3.08 Rear Axle Ratio and MX1 Transmission available only when KC4 Engine Oil Cooler is specified. Includes increased cooling capacity radiator and clutch type fan. | V05 | N.A. | 56.00 | 56.00 |
| Radiator and Transmission Oil, Heavy-Duty. Included when Z82 Trailing Special is specified | | | | |
| G1-2 Series only. Not available when MM3 or MM7 Transmission is specified. Available only when V05 Heavy-Duty Cooling, C60 Front Air Conditioning or C69 Front and Rear Air Conditioning is specified. LB4 4.3 Liter Engine with 3.08 Rear Axle, MX1 Automatic Transmission and V05 H.D. Cooling are available only when KC4 Engine Oil Cooler is specified | V02 | N.A. | 63.00 | 63.00 |
| G3 Series only | V02 | N.A. | 63.00 | 63.00 |
| Cover, Spare Tire: Black Vinyl on G1 Series and Color-Keyed Vinyl on G2-3 Series | P17 | N.A. | 33.00 | 33.00 |
| Doors: (One of the following door options must be specified.) | | | | |
| <i>Side Swing Out.</i> Replaces YA2 Standard Sliding Side Door. Side, Sliding | E24 | NO ADDITIONAL CHARGE | | |
| | YA2 | NO ADDITIONAL CHARGE | | |
| Door Lock System, Power: All Doors. Included when ZQ2 Operating Convenience Package is specified | | | | |
| | AU3 | N.A. | 211.00 | 211.00 |
| Extender Link, Side Rear Door Not available when E24 Swing Out Side Doors are specified | | | | |
| | AW4 | N.A. | 37.00 | 37.00 |
| Floor Covering: | | | | |
| <i>Carpeting, Wheelhousing and Floor.</i> Front area only. Includes stepwell mats. Available only when A57 Auxiliary Seat is specified. Not available when black trim is specified | | | | |
| | B30 | N.A. | 120.00 | 120.00 |
| <i>Mats, Color-Keyed Front Floor, Removable.</i> Available only when B30 Carpeting and A57 Auxiliary Seat are specified. | | | | |
| | B32 | N.A. | 23.00 | 23.00 |
| Gages: Voltmeter, Temperature and Oil Pressure | | | | |
| | Z53 | N.A. | 42.00 | 42.00 |

(a) D & H Charges on vehicle and optional equipment include reimbursement to ordering Division for any tax that it has paid, incurred or agreed to pay thereon.
 ◇ State and local taxes not included.

CHEVY VAN /VANDURA

OPTIONS WHEN INSTALLED BY GENERAL MOTORS

prices shown are effective with vehicles produced on and after January 2, 1988

| Description | Option Number | Factory D&H(a) | List Price | Mfr's Suggested Retail Price ◇ |
|---|---------------|----------------|------------|--------------------------------|
| OTHER OPTIONS | | | | |
| Glass: | | | | |
| <i>Tinted. All Windows. Includes A02 Glass.</i> | | | | |
| With A07 Body Glass | A01 | N.A. | 104.00 | 104.00 |
| Without A07 Body Glass | | | | |
| With A08 RH Side Body Glass | | | | |
| With A17 Swing-Out Left Side Glass and A19 Swing-Out Side Door Glass and A12 Rear Door Glass or A18 Swing-Out Rear Door Glass | A01 | N.A. | 84.00 | 84.00 |
| With A17 Swing-Out Left Side Glass and A19 Swing-Out Side Door Glass without A12 Rear Door Glass or A18 Swing-Out Rear Door Glass | A01 | N.A. | 75.00 | 75.00 |
| With A12 Rear Door Glass or A18 Swing-Out Rear Door Glass without A17 Swing-Out Left Side Glass or A19 Swing-Out Side Door Glass | A01 | N.A. | 75.00 | 75.00 |
| Without A17 Swing-Out Left Side Glass or A19 Swing-Out Side Door Glass or A12 Rear Door Glass or A18 Swing-Out Rear Door Glass | A01 | N.A. | 67.00 | 67.00 |
| Without A08 RH Side Body Glass | | | | |
| With A17 Swing-Out Left Side Glass and A19 Swing-Out Side Door Glass and A12 Rear Door Glass or A18 Swing-Out Rear Door Glass | A01 | N.A. | 75.00 | 75.00 |
| With A17 Swing-Out Left Side Glass and A19 Swing-Out Side Door Glass without A12 Rear Door Glass or A18 Swing-Out Rear Door Glass | A01 | N.A. | 67.00 | 67.00 |
| With A13 Side Door Glass or A19 Swing-Out Side Door Glass and A12 Rear Door Glass or A18 Swing-Out Rear Door Glass | A01 | N.A. | 67.00 | 67.00 |
| With A12 Rear Door Glass or A18 Swing-Out Rear Door Glass without A17 Swing-Out Left Side Glass or A19 Swing-Out Side Door Glass | A01 | N.A. | 56.00 | 56.00 |
| With A13 Side Door Glass or A19 Swing-Out Side Door Glass | A01 | N.A. | 56.00 | 56.00 |
| With A12 Rear Door Glass or A18 Swing-Out Rear Door Glass without A13 Side Door Glass or A19 Swing-Out Side Door Glass | A01 | N.A. | 56.00 | 56.00 |
| Without A12 Rear Door Glass or A13 Side Door Glass or A17 Swing-Out Left Side Glass or A18 Swing-Out Rear Door Glass or A19 Swing-Out Side Door Glass | A01 | N.A. | 47.00 | 47.00 |
| <i>Tinted Windshield only. Included when A01 Tinted Glass, AA3 Deep Tinted Glass or AJ1 Deep Tinted Glass is specified</i> | A02 | N.A. | 40.00 | 40.00 |

(a) D & H Charges on vehicle and optional equipment include reimbursement to ordering Division for any tax that it has paid, incurred or agreed to pay thereon.
 ◇ State and local taxes not included.

CHEVY VAN /VANDURA

OPTIONS WHEN INSTALLED BY GENERAL MOTORS

prices shown are effective with vehicles produced on and after January 2, 1988

| Description | Option Number | Factory D&H(a) | List Price | Mfr's Suggested Retail Price ◊ |
|--|---------------|----------------|------------|--------------------------------|
| OTHER OPTIONS | | | | |
| Glass: (Continued) | | | | |
| <i>Deep Tinted.</i> Available only when other body glass or door glass is specified. Not available when A01 Tinted Glass is specified. Includes tinted glass on passenger and driver's side door. Also includes A02 Windshield Glass and dark laminated glass on side windows and rear door. | | | | |
| With A07 Body Glass | AJ1 | N.A. | 401.00 | 401.00 |
| Without A07 Body Glass | | | | |
| With A08 RH Side Body Glass, A17 Swing-Out Left Side Glass, A19 Swing-Out Side Door Glass and A12 Rear Door Glass or A18 Swing-Out Rear Door Glass | AJ1 | N.A. | 334.00 | 334.00 |
| With A08 RH Side Body Glass, A17 Swing-Out Left Side Glass and A19 Swing-Out Side Door Glass | AJ1 | N.A. | 236.00 | 236.00 |
| With A17 Swing-Out Left Side Glass, A19 Swing-Out Side Door Glass and A12 Rear Door Glass or A18 Swing-Out Rear Door Glass | AJ1 | N.A. | 236.00 | 236.00 |
| With A08 RH Side Body Glass and A12 Rear Door Glass or A18 Swing-Out Rear Door Glass | AJ1 | N.A. | 236.00 | 236.00 |
| With A08 RH Side Body Glass | AJ1 | N.A. | 185.00 | 185.00 |
| Without A08 RH Side Body Glass | | | | |
| With A12 Rear Door Glass or A18 Swing-Out Rear Door Glass and A13 Side Door Glass or A19 Swing-Out Side Door Glass | AJ1 | N.A. | 185.00 | 185.00 |
| With A17 Swing-Out Left Side Glass and A19 Swing-Out Side Door Glass | AJ1 | N.A. | 185.00 | 185.00 |
| With A13 Side Door Glass or A19 Swing-Out Side Door Glass | AJ1 | N.A. | 118.00 | 118.00 |
| With A12 Rear Door Glass or A18 Swing-Out Rear Door Glass | AJ1 | N.A. | 118.00 | 118.00 |
| <i>Deep Tinted with Light Tinted Rear Window.</i> Available only when A07 Body Glass is specified. Includes tinted glass on passenger, driver's side and rear door. Also includes A02 Tinted Windshield and dark laminated glass on side windows. | AA3 | N.A. | 339.00 | 339.00 |
| <i>Swing-Out Rear Door.</i> | | | | |
| Without A07 Body Glass | A18 | N.A. | 109.00 | 109.00 |
| With A07 Body Glass | A18 | N.A. | 59.00 | 59.00 |
| <i>Body.</i> 6 Windows. Includes A12 Rear Door Glass without A18 Swing-Out Rear Door Glass. Also includes A08 RH Side Body Glass | A07 | N.A. | 205.00 | 205.00 |
| <i>RH Side Body.</i> 2 Windows. Included when A07 Body Glass is specified. Includes A13 Side Door Glass | A08 | N.A. | 81.00 | 81.00 |
| <i>Rear Door, Fixed.</i> Not available when A18 Swing-Out Rear Door is specified. Included when A07 Body Glass is specified. Includes interior rearview mirror | A12 | N.A. | 50.00 | 50.00 |
| <i>Side Door, Fixed.</i> Included when A08 RH Side Body Glass or A07 Body Glass is specified | A13 | N.A. | 40.00 | 40.00 |
| <i>Swing-Out LH Side Body.</i> Available only when A19 Swing-Out Side Door Glass is specified. | | | | |
| Without A07 Body Glass | A17 | N.A. | 117.00 | 117.00 |
| With A07 Body Glass | A17 | N.A. | 77.00 | 77.00 |
| <i>Swing-Out Side Door.</i> Not available when A13 Side Door Glass is specified. | | | | |
| Without A07 Body Glass or A08 RH Side Body Glass | A19 | N.A. | 117.00 | 117.00 |
| With A07 Body Glass or A08 RH Side Body Glass | A19 | N.A. | 77.00 | 77.00 |
| Headlamps: | | | | |
| <i>Halogen.</i> Not available with V22 Front Appearance | TT4 | N.A. | 24.00 | 24.00 |
| <i>Halogen Hi-Beam.</i> Available only when V22 Deluxe Appearance is specified. | TT5 | N.A. | 18.00 | 18.00 |
| Heaters: | | | | |
| <i>Engine Block.</i> 600 Watts, 120 Volts. Not available when B3J Diesel Equipment is specified | K05 | N.A. | 33.00 | 33.00 |
| <i>Rear.</i> Located on left side, forward of rear fender well | | | | |
| Without B3J Diesel Equipment or C60 Air Conditioning | C36 | N.A. | 267.00 | 267.00 |
| With B3J Diesel Equipment or C60 Air Conditioning | C36 | N.A. | 205.00 | 205.00 |

(a) D & H Charges on vehicle and optional equipment include reimbursement to ordering Division for any tax that it has paid, incurred or agreed to pay thereon.
 ◊ State and local taxes not included.

CHEVY VAN /VANDURA

OPTIONS WHEN INSTALLED BY GENERAL MOTORS

prices shown are effective with vehicles produced on and after January 2, 1988

| Description | Option Number | Factory O&H(a) | List Price | Mfr's Suggested Retail Price [○] |
|---|---------------|----------------------|------------|---|
| OTHER OPTIONS | | | | |
| Key Unit: Separate keys for side and rear cargo doors . . . | AU2 | N.A. | 8.00 | 8.00 |
| Lamps: <i>Rear, Dome and Reading.</i> Available only when TR9 Auxiliary Lighting is specified | TVR | N.A. | 32.00 | 32.00 |
| Lighter, Cigarette | U37 | N.A. | 32.00 | 32.00 |
| Lighting, Auxiliary: Includes front compartment combination dome-reading light, lights for RH, LH front stepwells and side door stepwell and headlamp warning buzzer | TR9 | N.A. | 103.00 | 103.00 |
| Mirrors, Exterior: LH and RH. Below-Eye-Line Type. 9" x 6.5". | | | | |
| <i>Painted</i> | D44 | N.A. | 52.00 | 52.00 |
| <i>Stainless Steel</i> | D45 | N.A. | 87.00 | 87.00 |
| Moldings: | | | | |
| <i>Body Side Black.</i> Included when ZY3 or ZY4 paint is specified. Includes body front, side and rear moldings | B84 | N.A. | 134.00 | 134.00 |
| <i>Wheel Opening</i> | B96 | N.A. | 74.00 | 74.00 |
| Operating Convenience Package: Includes AU3 Power Door Locks and A31 Power Windows | ZQ2 | N.A. | 411.00 | 411.00 |
| Preliminary Price Information | B3W | N.A. | N.A. | N.A. |
| Radio Equipment: | | | | |
| <i>AM Radio.</i> Includes dual front speakers | U63 | N.A. | 122.00 | 122.00 |
| <i>AM/FM Radio.</i> Includes dual front speakers | U69 | N.A. | 181.00 | 181.00 |
| <i>AM/FM Stereo Radio.</i> Electronically Tuned. Includes dual front speakers and wiring for rear speakers | UU9 | N.A. | 228.00 | 228.00 |
| <i>AM/FM Stereo Radio with Seek and Scan and Digital Clock.</i> Electronically Tuned. Includes dual front speakers and wiring for rear speakers | UM7 | N.A. | 288.00 | 288.00 |
| <i>AM/FM Stereo Radio with Stereo Cassette Tape, Seek and Scan and Digital Clock.</i> Electronically Tuned. Includes U66 Premium Speakers | UM6 | N.A. | 419.00 | 419.00 |
| <i>AM Stereo/FM Stereo with Stereo Cassette Tape, Seek and Scan, Graphic Equalizer and Digital Clock.</i> Electronically Tuned. Includes premium dual front speakers | UX1 | N.A. | 569.00 | 569.00 |
| <i>Speakers, Premium.</i> Includes dual two front speakers and wiring for rear speakers. Available only when UU9 or UM7 Radio is specified. Included with UM6 or UX1 Radio | U66 | N.A. | 11.00 | 11.00 |
| School Bus Equipment: G3 Series only. Available only when C6P H.D. Chassis is specified. Not available when VR2 or VR4 Hitch, Z72 or Z82 Trailering Special is specified | B3D | N.A. | 23.00 | 23.00 |
| Seat: <i>Front Auxiliary.</i> Stationary Type. Includes RH armrest, D20 Passenger Sunshade, seat belt, seat adjuster and floor mat. (Added weight includes passenger weight allowance of 150-lbs per seating position. Refer to vehicle and option weight section of Data Book.) | A57 | N.A. | 185.00 | 185.00 |
| Shock Absorbers: <i>Heavy-Duty, Front and Rear.</i> Standard on G2-3 Series | F51 | N.A. | 36.00 | 36.00 |
| Speed Control, Electronic: | K34 | N.A. | 205.00 | 205.00 |
| Springs: <i>Heavy-Duty.</i> | | | | |
| <i>Front. Capacity 1700-lb each.</i> | F60 | N.A. | 15.00 | 15.00 |
| <i>Rear.</i> | | | | |
| Capacity 1700-lb each. G1 Series only | G50 | N.A. | 62.00 | 62.00 |
| Capacity 2100-lb each. G2 Series only | G50 | N.A. | 36.00 | 36.00 |
| Stabilizer Bar: <i>Front.</i> Standard on G3 Series when C6P H.D. Chassis is specified. Included when Z82 Trailering Special is specified | F59 | N.A. | 40.00 | 40.00 |
| Steering: | | | | |
| <i>Power.</i> Standard on G2-3 Series | N40 | N.A. | 292.00 | 292.00 |
| <i>Power, Not Desired.</i> G1 Series only. Not available when Z72 Trailering Special is specified | N51 | | | |
| | | NO ADDITIONAL CHARGE | | |

(a) D & H Charges on vehicle and optional equipment include reimbursement to ordering Division for any tax that it has paid, incurred or agreed to pay thereon.
[○] State and local taxes not included.

CHEVY VAN /VANDURA

OPTIONS WHEN INSTALLED BY GENERAL MOTORS

prices shown are effective with vehicles produced on and after January 2, 1988

| Description | Option Number | Factory D&H(a) | List Price | Mfr's Suggested Retail Price ◊ |
|---|---------------|----------------|------------|--------------------------------|
| OTHER OPTIONS | | | | |
| Steering Wheels: | | | | |
| Comfortilt | N33 | N.A. | 121.00 | 121.00 |
| Custom | N31 | N.A. | 28.00 | 28.00 |
| Sport | NK3 | N.A. | 35.00 | 35.00 |
| Stop, Positive: Rear Door | AD8 | N.A. | 37.00 | 37.00 |
| Sunshade, Passenger: Included when A57 Auxiliary Seat is specified | D20 | N.A. | 21.00 | 21.00 |
| Tank, Fuel: 125" wheelbase only. Approximately 33-gallon capacity. Replaces production tank | NL7 | N.A. | 96.00 | 96.00 |
| Trailer Hitch: | | | | |
| Deadweight Type. Not available when Z82 Trailing Special is specified. Included when Z72 Trailing Special is specified. | VR2 | N.A. | 68.00 | 68.00 |
| Weight Distributing Platform Type. Included when Z82 Trailing Special is specified | VR4 | N.A. | 190.00 | 190.00 |
| Trailing Special Equipment: (See Trailing Guide for GCW Ratings with available power team combinations.) | | | | |
| Heavy-Duty. G2-3 Series only. Includes VR4 Weight Distributing Hitch Platform, H.D. Flashers and H.D. 7 Lead Wiring Harness. | | | | |
| G2 Series. Available only when 3.73 Rear Axle Ratio, MX0 or MX1 Automatic Transmission, L03 5.0 Liter, L05 5.7 Liter Engine or B3J Diesel Equipment is specified. Also includes F59 Stabilizer Bar. | | | | |
| Without B3J Diesel Equipment. Includes KC4 Engine Oil Cooler, UA1 H.D. Battery and V02 H.D. Radiator and Transmission Oil Cooler | Z82 | N.A. | 596.00 | 596.00 |
| With B3J Diesel Equipment | Z82 | N.A. | 349.00 | 349.00 |
| G3 Series. Available when L05 5.7 Liter Engine or B3J Diesel Equipment and MX1 Automatic Transmission are specified. | | | | |
| Without B3J Diesel Equipment. Also includes KC4 Engine Oil Cooler, UA1 H.D. Battery and V02 H.D. Radiator and Transmission Oil Cooler | Z82 | N.A. | 555.00 | 555.00 |
| With B3J Diesel Equipment | Z82 | N.A. | 308.00 | 308.00 |
| Light-Duty. Available only when MX0 or MX1 Automatic Transmission and C60 Front or C69 Front and Rear Air Conditioning, B3J Diesel Equipment or V05 H.D. Radiator are specified. G1 Series available only when N40 Power Steering and F59 Stabilizer are specified. G2 Series available only when F59 Stabilizer is specified. Not available when L19 7.4 Liter Engine is specified. Includes VR2 Deadweight Trailer Hitch and 5 lead wiring harness | Z72 | N.A. | 132.00 | 132.00 |
| Wheels: | | | | |
| Rally. G1-2 Series only. Includes 15" x 6.50" wheels, trim rings and special hub caps | N67 | N.A. | 121.00 | 121.00 |
| Aluminum, Cast. Four Wheels only. G1-2 Series only. Includes 15" x 6.50" wheels and special hub caps | PF3 | N.A. | 316.00 | 316.00 |
| Windows: Power. Front side doors only. Included when ZQ2 Operating Convenience Package is specified | A31 | N.A. | 200.00 | 200.00 |
| Windshield Wiper System: Intermittent | CD4 | N.A. | 59.00 | 59.00 |

(a) D & H Charges on vehicle and optional equipment include reimbursement to ordering Division for any tax that it has paid, incurred or agreed to pay thereon.
 ◊ State and local taxes not included.

NOTES

CHEVY VAN/VANDURA

**CAB & BODY FEATURES
BODY CONSTRUCTION
SEATING ARRANGEMENTS
COLOR & TRIM CHARTS
TWO-TONES**

CHEVY VAN/VANDURA

STANDARD MODEL—BODY ORDERING CODE—ZW9

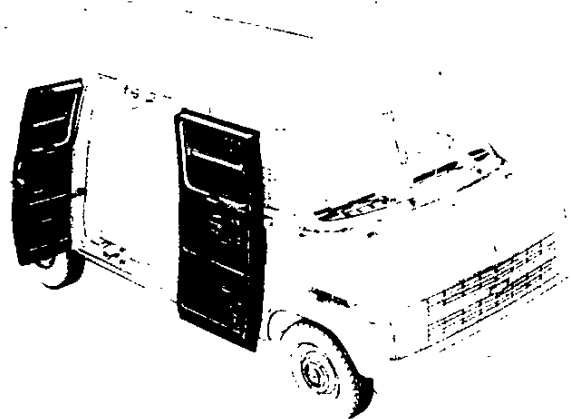
The standard model includes the following items as standard equipment



EXTERIOR

- **Bumpers:** Front and rear; painted silver
- **Colors:** See Interior and Exterior Color Selection Chart
- **Doors:** RH and LH front side doors; RH and LH rear load doors; a RH sliding side load door is standard, however, hinged RH side loading doors are available
- **Door Opening and Locking Methods:**
Front side doors: Outside pushbutton latch release in door handle with separate key lock; keyless outside locking
Sliding side load door: turning outside handle counterclockwise releases both front and rear latches; to close door, reverse procedure; for opening and closing of door from inside, reverse outside procedure; door is locked from outside through a separate key lock
RH and LH rear doors: Pushbutton latch release in RH door handle opens door, and after opening RH door, LH door latch is released by lower inside lift handle; separate key lock cylinder in RH door
- **Glass:** Windshield; RH and LH front side door drop glass and pivoting ventpanes
- **Grille:** Molded plastic; painted light argent; integral Chevrolet emblem/GMC letters at center
- **Grille Frame:** Headlamp/parking lamp bezels plus upper and lower moldings joining extensions of lamp bezels; painted light argent
- **Horn:** Single, electric low-note
- **Hub Caps:** Bright metal with black trim
- **Keys:** Two-key system with separate keys for ignition switch and doors and tailgate
- **Lights:**
Backup lamps: Two rear (integral with taillamps)
Combination parking/direction/hazard: Two front
Combination tail/stop/direction/hazard: Two rear
Headlamps: Two; Rectangular
License plate lamp: Single rear
Side marker lamps with reflectors: Two front and two rear
- **Mirrors:** RH and LH chrome; fixed arm with adjustable 6" wide x 4¹/₁₆" high head

- **Nameplates:** Bright "Chevy Van/Vandura/Series" plate on front fenders; bright "Chevrolet/GMC letters" plate on LH rear door
- **Tools:** Mechanical jack and wheel wrench
- **Undercoating:** On body rocker panels, step panels, wheel-housings
- **Wheels:** Painted white
- **Windshield Wipers and Washers:** Electric, 2-speed wipers with black finish on exposed metal portions; wet-arm design demand-type washer system



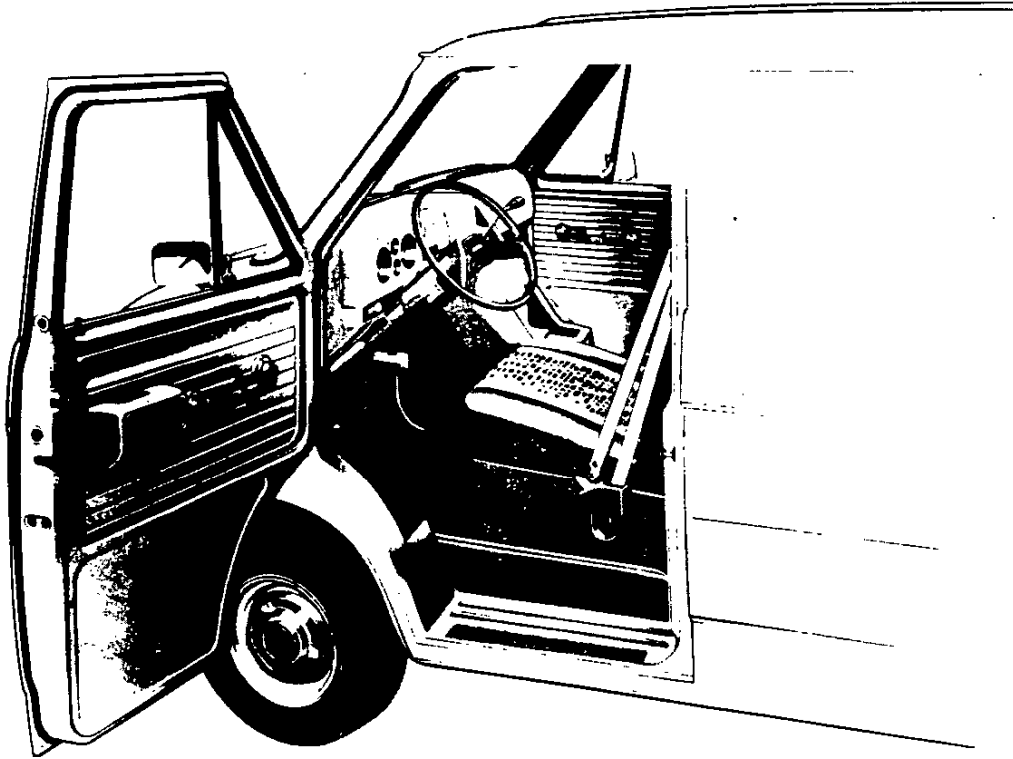
SIDE SWING OUT DOORS—RPO E24

These hinged double side doors are available at no extra cost to replace the standard sliding side door. They feature stainless steel hinge pins and galvanized steel outer panels. The forward door is approximately 12 inches wider than the rearward door to provide a wide opening for cargo or passengers when only the forward door is opened.

CHEVY VAN/VANDURA

STANDARD MODEL—BODY ORDERING CODE—ZW9

The standard model includes the following items as standard equipment



INTERIOR

- **Air Vents:** RH and LH; individually controlled
- **Armrest:** LH side door; padded
- **Ashtray:** At top of instrument panel extension; with door
- **Coat Hooks:** On LH side panel to rear of driver's seat
- **Colors:**
 - Painted areas: Same as exterior primary color choice
 - Interior trim: Coordinated with seat trim color choice
- **Dome Lamps:** Two; with front door-actuated switches (dome lamps may also be activated by main light switch)
- **Door Locks:** Inside pushbutton lock/release for front doors; rotating locking knob for sliding side door
- **Door Seals:** Latex foam rubber
- **Floor Covering:** Embossed black rubber mats, LH front floor area and wheelhousing
- **Headliner:** Mystic-colored perforated hardboard; driver area
- **Heater and Defogger:** Deluxe-air
- **Hood Lock Release:** Handle located on LH side of instrument panel
- **Instruments:**
 - Gages: Speedometer, odometer, and fuel
 - Switches: Main, for control of exterior lights, instrument lights and dome lights; multi-function switch on steering column for direction signals by moving lever up or down (includes lane change position), headlight beams by pulling lever toward driver, windshield wiper by turning band marked "WIPER" toward or away from driver, and windshield washer by pushing in the lever knob; ignition with key-in warning buzzer; hazard warning; heater fan; door-operated dome lamp
- **Warning lights:** Generator, oil pressure, engine temperature, service-parking brake, direction/hazard signal, and high beam
- **Instrument Panel:** Bright trim on gauge bezels; black applique with bright trim on area below instrument cluster
- **Insulation and Sound Deadening Material:** Dash (fire-wall), LH front floor panel, engine cover front extension and inside engine cover
- **Lights:** Instruments, front and rear dome
- **Main Light Switch Control Knob:** Bright, with brushed finish and black graphic identification
- **Parcel Tray:** On top surface of instrument panel extension; includes beverage holder provisions
- **Safety Step Pads:** Front and rear side door step panels
- **Seat:** Front, bucket driver; adjustable; all-vinyl trim; foam padded. Also available at extra cost: High back driver and passenger seats in standard vinyl or Custom vinyl. See Interior and Exterior Color Selection Chart for color and trim availability
- **Seat Belt:** Color-keyed with pushbutton release and outboard retractor
- **Spare Tire Carrier:** RH rear side
- **Steering Wheel and Column:** 15.25" diameter black soft vinyl wheel with 2 spokes; black energy-absorbing steering column with anti-theft locking feature
- **Stowage Box:** In front face of instrument panel extension; with latched door
- **Sunshade:** LH padded, color-keyed
- **Trim Panels:** Painted metal with decorative embossments; front and rear side doors

CHEVY VAN/VANDURA

BODY GLASS COMBINATIONS



GMC model shown (Chevrolet model available)

2-WINDOW RH BODYSIDE GLASS (RPO A08)

Two-window glass for RH side of vehicle only. Windows with fixed glass provided in RH rear-quarter panel and in side cargo door(s). Included in 6-Window Body Glass (RPO A07).

FIXED SIDE DOOR GLASS (RPO A13)

A single large fixed glass in the RH sliding cargo door or a single fixed glass in each hinged side cargo door. Included with 2-Window Body Glass (RPO A08).



Chevrolet model shown (GMC model available)

6-WINDOW BODY GLASS (RPO A07)

Full body glass consisting of six fixed-glass windows. Option is comprised of LH and RH rear-quarter window glass, LH front-quarter window glass, side cargo door glass, and LH and RH rear cargo door glass. Includes interior non-glare mirror.

FIXED REAR DOOR GLASS (RPO A12)

Consists of RH and LH rear door fixed glass. Includes interior non-glare mirror. Included with 6-Window Body Glass (RPO A07).

SWING-OUT LH SIDE GLASS (RPO A17)

Consists of divided, bright-framed swing-out glass installed on the LH side of the body opposite the side cargo door(s). Individual latches allow independent operation. Requires Swing-Out Side Door Glass (RPO A19).

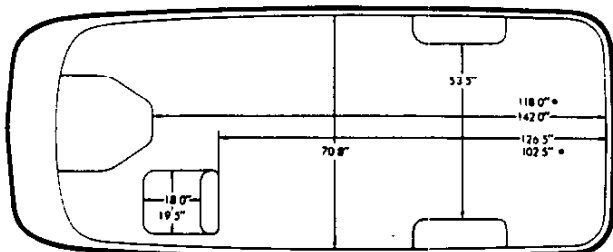
SWING-OUT SIDE DOOR GLASS (RPO A19)

Swing-out windows for the side cargo door(s) are bright framed. Sliding door unit is divided at the center for individual operation.

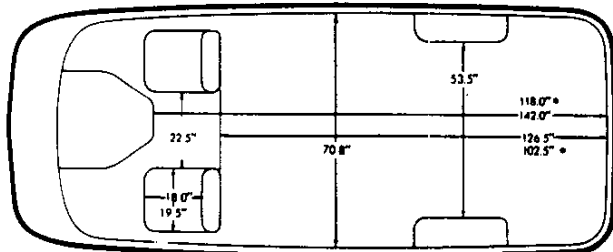
SWING-OUT REAR DOOR GLASS (RPO A18)

Consists of LH and RH rear cargo door glass with swing-out hinge and latch. Includes interior non-glare mirror.

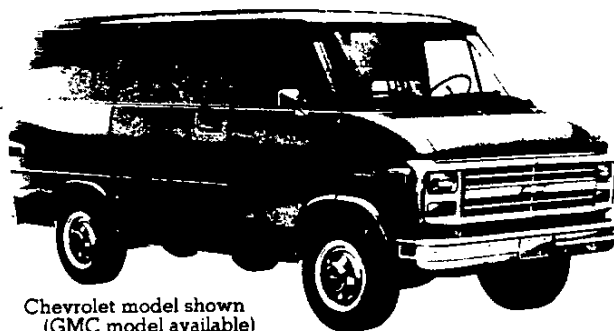
CHEVY VAN/VANDURA



STANDARD DRIVER'S SEAT ONLY



WITH OPTIONAL RH PASSENGER SEAT



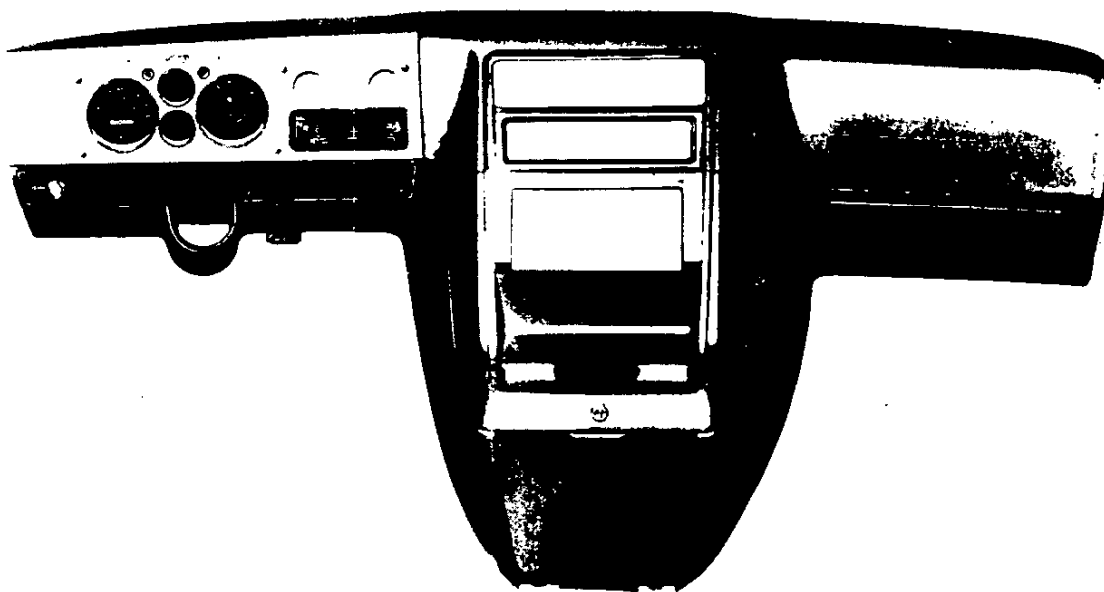
Chevrolet model shown
(GMC model available)

CHEVY VAN/VANDURA SEATING AND LOADSPACE

Seating arrangement for standard and optional front seat.

*110" WB MODELS

INSTRUMENTS



The standard instrument cluster gages and heater controls are set into the molded plastic instrument panel and have bright bezels. The large LH opening contains the speedometer, odometer, high beam indicator, and service-parking brake warning light. Diesel engine models will also have warning lights for low coolant, glow plugs and water-in-fuel.

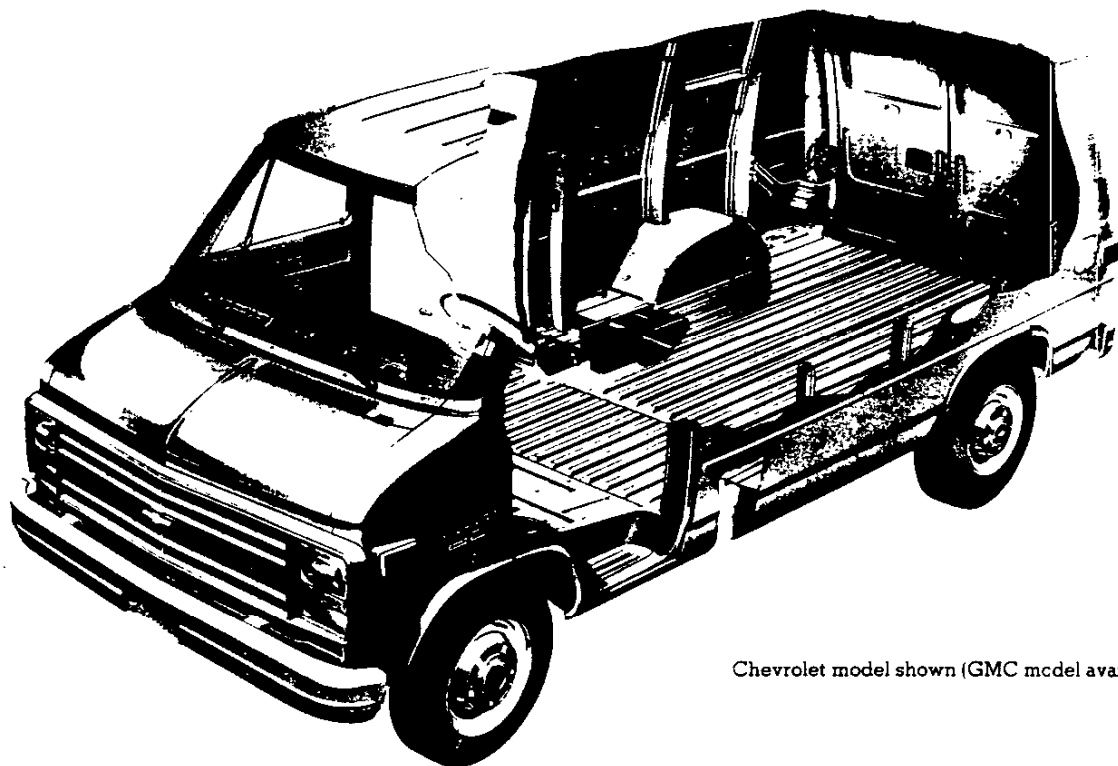
The large RH opening contains the fuel gage with a graphic symbol. An "Unleaded Fuel Only" notation is carried on the face of the fuel gage for models which require this fuel. The upper small opening between these two large openings houses the warning lights with graphic symbols for temperature, low oil pressure and generator. The lower opening is provided to house the RPO U35 electric clock.

On the upper RH side the two small openings are provided to house the controls for the RPO C36 rear heater (LH) and the RPO C69 rear air conditioner (RH). Below these openings are the heater/defogger and optional front air conditioner controls with graphic symbols for the fan and defogger. A similar instrument cluster with voltmeter, oil pressure gage and engine temperature gage is available as RPO Z53.

The area below the instrument cluster contains, from left to right, the windshield washer/wiper switch, with graphic symbol, main light switch, and ignition switch. This lower area has a black applique with bright trim. At the far left is the provision for the LH front air conditioner air outlet.

CHEVY VAN/VANDURA

BODY CONSTRUCTION FEATURES



Chevrolet model shown (GMC model available)

The all-steel, Chevy Van/Vandura and Sportvan/Rally bodies feature body-frame integral construction for outstanding structural rigidity and excellent durability. The basic bodies of either the nominal 15 foot (110" WB) or 17 foot (125" WB) models are comprised of an underbody structure, front end structure, left and right hand side panel structures, and a roof panel structure.

Longitudinal side rails, cross sills, and outriggers form the integral frame to which front and rear floor panels are welded, completing the underbody structure. Main structural members are of heavy-gage steel. A step well is incorporated in the underbody in the area adjacent to the front doors and sliding side door to provide convenient entry and exit.

The front end structure incorporates an engine compartment with outside opening hood panel which affords quick and easy access to 27 service points, such as the engine, radiator, battery, brake master cylinder and windshield washer reservoir. The radiator support upper tie bar and baffles are mechanically attached to facilitate engine removal. A plenum chamber with high-level air intake is utilized in the front end structure to assure a plentiful supply of dry, outside air for interior heating and ventilating as well as to add rigidity to the overall body structure. Air outlets to the interior are provided on the left hand and right hand sides by manually controlled doors (RH door omitted with optional air conditioning).

Side panel structures are comprised basically of seamless, one-piece outer panels reinforced with vertical strainers and welded to roof rails at the top and to rocker panels at the bottom. Left hand side panel structures utilize three vertical strainers, with a fourth strainer added for 17-foot bodies. Right hand side panel structures, which are smaller because of the provision for the base side load door, are reinforced with one vertical strainer in 15-foot body applications and two strainers in 17-foot body applications. Two window openings are incorporated in the left hand side panel for all Sportvans/Rally, or for Chevy Vans/Vandura with RPO A07 body glass; one window is incorporated for Chevy Vans/Vandura with RPO A17 body glass. The right hand side panel for Sportvan/Rally models, or Chevy Van/Vandura with RPO A07 or A08 body glass, has one window. Provision is made at the rear of the left hand side panel for incorporation of a door to conceal the fuel tank filler.

Roof panels are of one-piece design and are embossed with six longitudinal stiffening ribs. Four roof bows support the 15-foot body roof panel, while five roof bows are used for the 17-foot body.

Special attention is given to corrosion prevention during the construction and final finishing of the body. The following body design features occur during the construction of the body:

1. Use of special steel (galvanized, zinc iron alloy, zinc coated) for body components especially subject to corrosion.
2. Use of one-piece outer panels to minimize exterior joints where corrosion might occur.
3. Use of heavy-gage steel for main underbody components.
4. Use of weld-through sealers in the assembly process to assure strong welds.

After body construction is completed, additional corrosion preventative steps are taken in the final finishing operation. The following occur:

1. The body, doors and hood are thoroughly cleaned by processing them through a 7-stage zinc phosphate washer.
2. Next, the body, doors and hood are primed by the Eipo electro-coating process which is the deposition of an electrically charged colloidal paint using an electric current. Electro-coating assures uniform application of primer even on surfaces normally inaccessible. In the process, the body, doors and hood are submerged in an emulsion of water and paint; the body, doors and hood and the emulsion are then oppositely charged, causing the paint to adhere to the metal.
3. Sealers are then applied to all critical interior-exterior joints.
4. Undercoating is sprayed on the undersurfaces of the wheel-housings, front door step panels and body rocker panels.
5. The body, doors and hood are painted with enamel.
6. A sealer pad is installed on the top surface of the floor panel at the left hand side, and is bonded to the floor panel as the body bakes in the topcoat oven.
7. The lower inside surfaces of the doors and rocker panels are sprayed with aluminum wax preservative.
8. A protective coating is applied to the front door hinge pins.
9. Finally, an anti-chip coating is added which extends from the rear of the front wheel openings to the rear door openings to prevent stone chipping.

CHEVY VAN/VANDURA INTERIOR AND EXTERIOR COLOR AVAILABILITY CHART

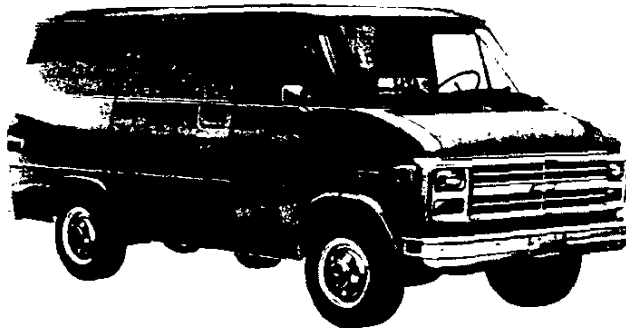
Please Note: Below are the interior trim color and exterior paint combinations recommended by Chevrolet/GMC. The only available color code 1/color code 2 exterior color combinations are those shown in the chart below; however, any available interior trim color may be ordered with one of these exterior color combinations if the particular combination is desired by the customer.

| TRIM LEVEL | | | INTERIOR COLORS | | | | |
|--|--------------|--------------|----------------------------------|------|----------|--------|------------|
| Seat Type | | | Black | Blue | Burgundy | Saddle | Slate Gray |
| STANDARD MODEL (Two Seats w/A57) | | | | | | | |
| Vinyl Drivers Seat | | | | VDD2 | | VSS2 | |
| Vinyl High-Back Bucket Drivers Seat | | | | VDD4 | | VSS4 | |
| Custom Vinyl High-Back Bucket Drivers Seat | | | XBB4 | XDD4 | XEE4 | XSS4 | XTT4 |
| EXTERIOR COLORS w/ZY1, ZY3 or ZY4 PAINT | | | RECOMMENDED INTERIOR TRIM COLORS | | | | |
| | Color Code 1 | Color Code 2 | Black | Blue | Burgundy | Saddle | Slate Gray |
| BLUE, GALAXY (Metallic) | 28 | 28 | | ● | | | ● |
| Blue, Light (Metallic) | 28 | 21 | | ● | | | |
| Gold, Nevada (Metallic) | 28 | 67 | | | | ● | |
| Gray, Steel (Metallic) | 28 | 90 | | ● | | | ● |
| White, Frost | 28 | 12 | | ● | | | |
| BLUE, LIGHT (Metallic) | 21 | 21 | | ● | | | ● |
| Blue, Galaxy (Metallic) | 21 | 28 | | ● | | | |
| Gray, Steel (Metallic) | 21 | 12 | | ● | | | ● |
| White, Frost | 21 | 12 | | ● | | | ● |
| BROWN, WOODLANDS (Metallic) | 39 | 39 | | | | ● | |
| Champagne (Metallic) | 39 | 62 | | | | ● | |
| Gold, Nevada (Metallic) | 39 | 67 | | | | ● | |
| White, Frost | 39 | 12 | | | | ● | |
| BURGUNDY (Metallic) | 78 | 78 | | | ● | ● | |
| Champagne (Metallic) | 78 | 62 | | | ● | ● | |
| Gold, Nevada (Metallic) | 78 | 67 | | | ● | ● | |
| Gray, Steel (Metallic) | 78 | 90 | | | ● | ● | ● |
| Red, Apple | 78 | 72 | | | ● | ● | |
| CHAMPAGNE (Metallic) | 62 | 62 | | | | ● | |
| Burgundy (Metallic) | 62 | 78 | | | ● | ● | |
| Emerald (Metallic) | 62 | 44 | | | | ● | |
| Red, Apple | 62 | 72 | | | ● | ● | |
| White, Frost | 62 | 12 | | | ● | ● | |
| EMERALD (Metallic) | 44 | 44 | | | | ● | |
| Champagne (Metallic) | 44 | 62 | | | | ● | |
| Gold, Nevada (Metallic) | 44 | 67 | | | | ● | |
| Gray, Steel (Metallic) | 44 | 90 | | | | ● | ● |
| GOLD, NEVADA (Metallic) | 67 | 67 | | | | ● | |
| Blue, Galaxy (Metallic) | 67 | 28 | | | | ● | |
| Brown, Woodlands (Metallic) | 67 | 39 | | | | ● | |
| Burgundy (Metallic) | 67 | 78 | | | ● | ● | |
| Emerald (Metallic) | 67 | 44 | | | | ● | |
| Red, Apple | 67 | 72 | | | ● | ● | |
| GRAY, STEEL (Metallic) | 90 | 90 | ● | ● | ● | ● | ● |
| Blue, Galaxy (Metallic) | 90 | 28 | | ● | | | ● |
| Blue, Light (Metallic) | 90 | 21 | | ● | | | |
| Burgundy (Metallic) | 90 | 78 | | | ● | | ● |
| Emerald (Metallic) | 90 | 44 | | | | ● | |
| Red, Apple | 90 | 72 | | | ● | ● | |
| White, Frost | 90 | 12 | | | ● | ● | |
| RED, APPLE | 72 | 72 | | | ● | ● | |
| Burgundy (Metallic) | 72 | 78 | | | ● | ● | |
| Champagne (Metallic) | 72 | 62 | | | ● | ● | |
| Gold, Nevada (Metallic) | 72 | 67 | | | ● | ● | |
| Gray, Steel (Metallic) | 72 | 90 | | | ● | ● | ● |
| White, Frost | 72 | 12 | | | ● | ● | |
| WHITE, FROST | 12 | 12 | ● | ● | ● | ● | ● |
| Blue, Light (Metallic) | 12 | 21 | | ● | | | |
| Burgundy (Metallic) | 12 | 78 | | | ● | | ● |
| Champagne (Metallic) | 12 | 62 | | | | ● | |
| Gold, Nevada (Metallic) | 12 | 67 | | | | ● | |
| Gray, Steel (Metallic) | 12 | 90 | | | | ● | ● |
| Red, Apple | 12 | 72 | | | ● | ● | |

CHEVY VAN/VANDURA

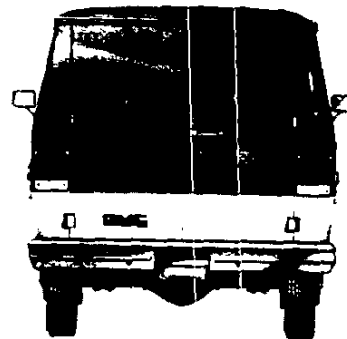
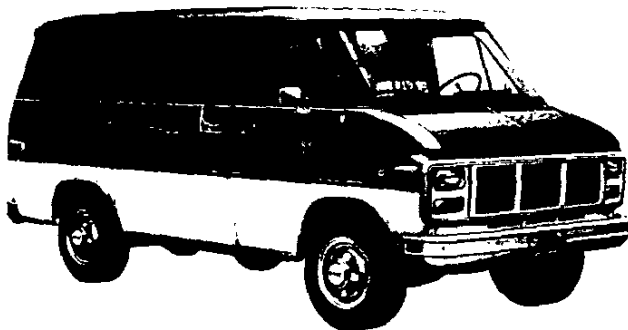
SOLID AND TWO-TONE* EXTERIOR COLOR COMBINATIONS

The application of paint for solid and two-tone exterior color combinations is shown below.



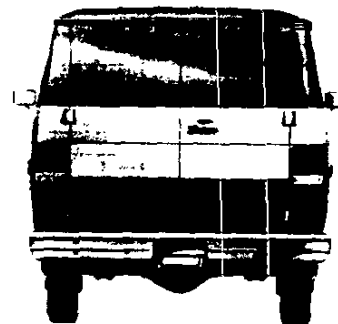
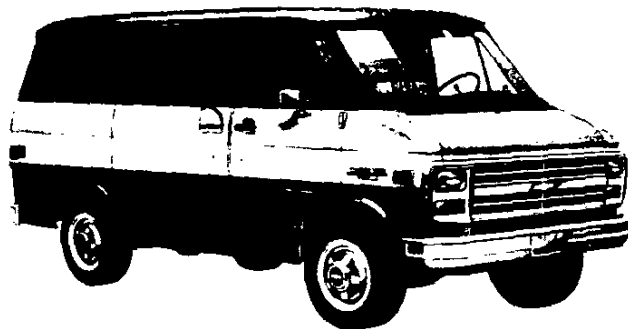
SOLID COLORS

Solid color paint (ZY1) is standard on all models. All painted areas of the body are the same color.



SPECIAL TWO-TONE

Special two-tone (ZY3) paint colors include black body side and rear moldings. Color code 1 is applied to the areas above the moldings. Color code 2 is applied to the areas below the moldings.



DELUXE TWO-TONE

Deluxe two-tone (ZY4) paint colors include black body side and rear moldings with bright trim. Color code 1 is applied to the areas above the belt line styling crease line and below the moldings. Color code 2 is applied to the areas between the belt line styling crease line and the moldings.

*Optional at extra cost.