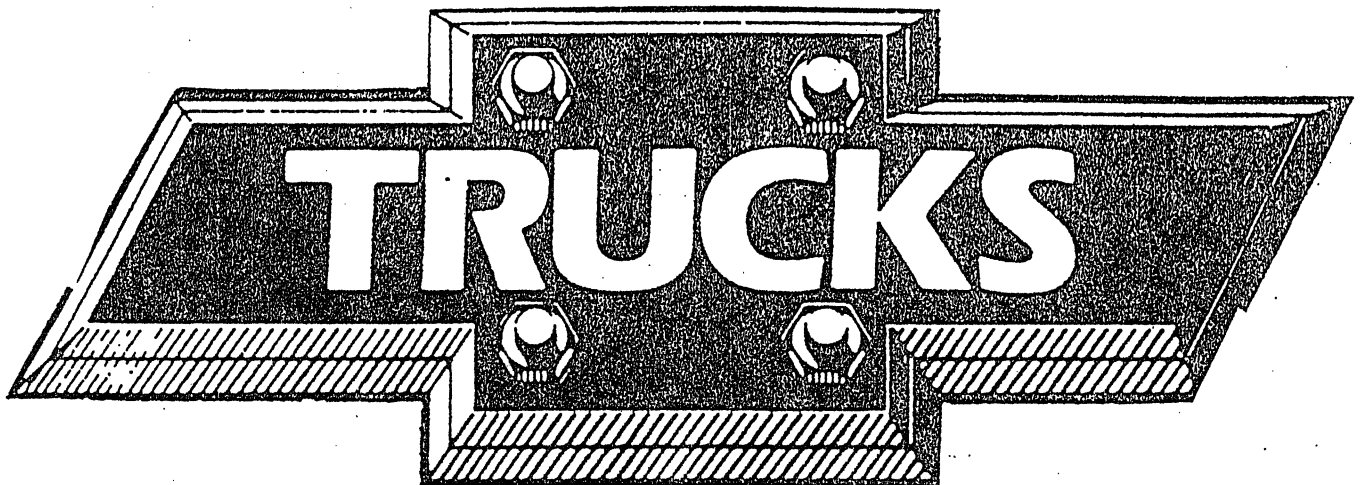
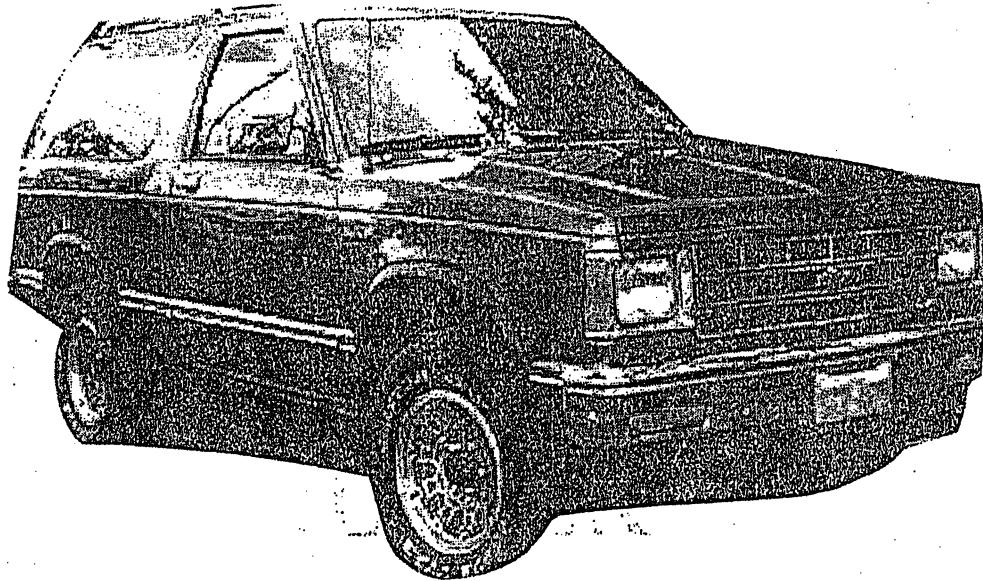
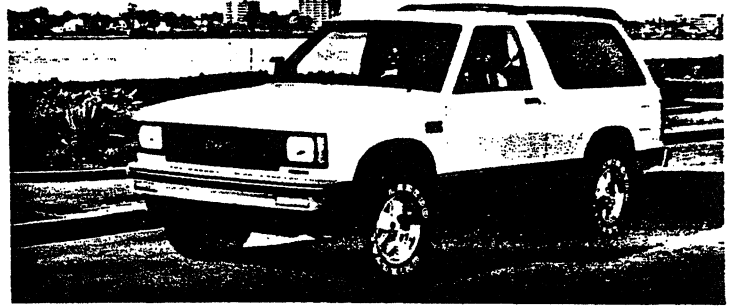


1989

CHEVROLET
BLAZER



S/T BLAZER/JIMMY



CONTENTS

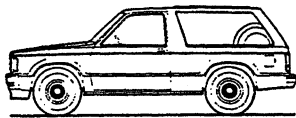
	<u>Page</u>
MODEL SELECTION	2
S-10/T-10/SIERRA	3
TAHOE/SIERRA CLASSIC (RPO YC2)	4
SPORT/GYPSY (RPO YC3)	5
POWERTEAMS	6
SPECIFICATIONS	7
OPTIONAL EQUIPMENT	14
FEATURES TO SELL	19
COLOR AND TRIM	20

MODELS

KEY: RED PRINT INDICATES NOT AVAILABLE IN CALIFORNIA
 BOLD PRINT INDICATES NOT AVAILABLE W/HIGH ALTITUDE EMISSIONS

TWO-WHEEL DRIVE (S)

S-10/S-15 4X2 BLAZER/JIMMY



WB (IN.)	GVWR RANGE (LBS.)	MAX. PAYLOAD (LBS.)	AVAIL. TRIM	STD. ENGINE/TRANS	OPT. ENGINE/TRANS	MODEL NUMBER
100.5	3961-4632	1000	All	2.8L V6/M5	4.3L V6/A4	S10516

S-10/S-15 BLAZER/JIMMY

The S-10/S-15 Blazer/Jimmy is offered in one wheelbase, with a standard 1000-lb. payload and a choice of V6 powerteams.

FOUR-WHEEL DRIVE (T)

T-10/T-15 4X4 BLAZER/JIMMY



WB (IN.)	GVWR RANGE (LBS.)	MAX. PAYLOAD (LBS.)	AVAIL. TRIM	STD. ENGINE/TRANS	OPT. ENGINE/TRANS	MODEL NUMBER
100.5	4310-5013	1000	All	2.8L V6/M5	4.3L V6/A4	S10516

T-10/T-15 BLAZER/JIMMY

The T-10/T-15 Blazer/Jimmy features the versatility of four-wheel drive, in addition to the standard 1000-lb. payload and V6 powerteam availability.

* Total available for people, equipment, and cargo.

S/T BLAZER/JIMMY TRIM LEVELS

S-10/T-10/SIERRA

The S-10/T-10/Sierra trim level is the base S/T Blazer/Jimmy trim level. It offers a high level of standard features for compact sport/utility buyer looking for value.

TAHOE/SIERRA CLASSIC

The Tahoe/Sierra Classic is an optional trim level that adds additional features compared to the S-10/T-10/Sierra trim level.

SPORT/GYPSY

The Sport/Gypsy trim level is the top-of-the-line trim level in the S/T Blazer/Jimmy series. It is designed to offer compact sport/utility buyers a high level of comfort and convenience features.

S-10/T-10/SIERRA (RPO YC1)

The S-10/T-10/Sierra trim level is the base trim level of the S/T Blazer/Jimmy model lineup. It is designed to offer buyers a high level of standard features when purchasing a base-level truck.

The following features are standard:



Some equipment shown may be optional or extra cost.

POWERTEAM/CHASSIS

- 2.8-liter V6 engine with Electronic Fuel Injection (EFI) is standard. It produces 125 horsepower @ 4800 rpm and 150 lb. ft. of torque @ 2400 rpm.
- Single electric high-note horn.
- Floor-mounted 5-speed manual overdrive transmission.
- Front suspension is an independent design with coil springs on 4x2 models and an independent driving axle with torsion bars on 4x4 models.
- Rear suspension is a two-stage multi-leaf spring design.
- Power-assisted brakes; front disc, rear-wheel anti-lock brake system (operates in 2WD only on 4x4 models).
- Power steering.
- Frame is an all-welded ladder type with channel design and boxed front-end section.
- 20.0-gallon fuel tank.

EXTERIOR

- Front and rear chromed bumper with black rub strips. Front bumper includes integral parking lamps.
- Chrome and black molded plastic grille and headlamp/side marker lamp bezels.
- Bright metal hub caps on 4x2 models (Chevy models have black trim). Black hub caps on 4x4 models.
- Door handles/lock cylinders with bright finish.
- Bright taillight trim.
- All-season steel-belted radial tires.
- Compact spare tire.
- RH and LH fixed arm mirrors with adjustable heads, black finish.

INTERIOR

- RH and LH padded armrests integral with door panels. Door panels are color-keyed plastic with map pockets and gray housing in door latch release area.
- High-back bucket seats with folding seat backs and leather-grained custom vinyl. RH seat includes easy-entry feature.
- RH and LH coat hook.
- Black plastic door sill plate. Color-keyed plastic endgate scuff plate.
- Door-operated courtesy and front and rear dome lamps with bright trim.
- Floor-covering consists of color-keyed rubber mat for entire floor.
- Tinted glass on all windows.
- Convenience tray.
- Grab handles for front passenger and rear seat occupants.
- Deluxe heater with side window defoggers.
- Cigarette lighter with ashtray illumination.
- Padded, color-keyed LH and RH sunshades.
- Gages include speedometer, odometer and fuel level.
- Deluxe, color-keyed 2-spoke steering wheel.
- Headlamp warning buzzer.
- 10-inch rearview mirror.
- Full-foam headliner with color-keyed cloth cover.

TAHOE/ SIERRA CLASSIC

(RPO YC2)



Some equipment shown may be optional or extra cost.

The Tahoe/Sierra Classic trim level is an optional trim level for the S/T Blazer/Jimmy model lineup. It is designed to offer buyers an increased level of comfort and convenience features compared to the S-10/T-10/Sierra trim level.

The following features are standard. Bold type denotes equipment in addition to or replacing that of the S-10/T-10/Sierra trim level:

POWERTEAM/CHASSIS

- 2.8-liter V6 engine with Electronic Fuel Injection (EFI) is standard. It produces 125 horsepower @ 4800 rpm and 150 lb. ft. of torque @ 2400 rpm.
- Single electric high-note horn.
- Floor-mounted 5-speed manual overdrive transmission.
- Front suspension is an independent design with coil springs on 4x2 models and an independent driving axle with torsion bars on 4x4 models.
- Rear suspension is a two-stage multi-leaf spring design.
- Power-assisted brakes; front disc rear wheel anti-lock brake system (operates in 2WD only on 4x4 models).
- Power steering.
- Frame is an all-welded ladder type with channel design and boxed front-end section.
- 20.0-gallon fuel tank.

EXTERIOR

- Front and rear chromed bumper with black rub strips. Front bumper includes integral parking lamps.
- Chrome and black molded plastic grille and headlamp/side marker lamp bezels.
- **Bright wheel opening moldings.**
- **Black body side moldings with bright insert plus rear quarter window moldings.**
- **Hood insulators and cowl to fender seals.**
- **Rally wheels on 4X2 models. Trim rings on 4X4 models.**
- Door handles/lock cylinders with bright finish, **plus body color door handle inserts.**
- Bright taillight trim.
- All-season steel-belted radial tires.
- RH and LH fixed arm mirrors with adjustable heads, black finish.
- **Black tailgate applique.**

INTERIOR

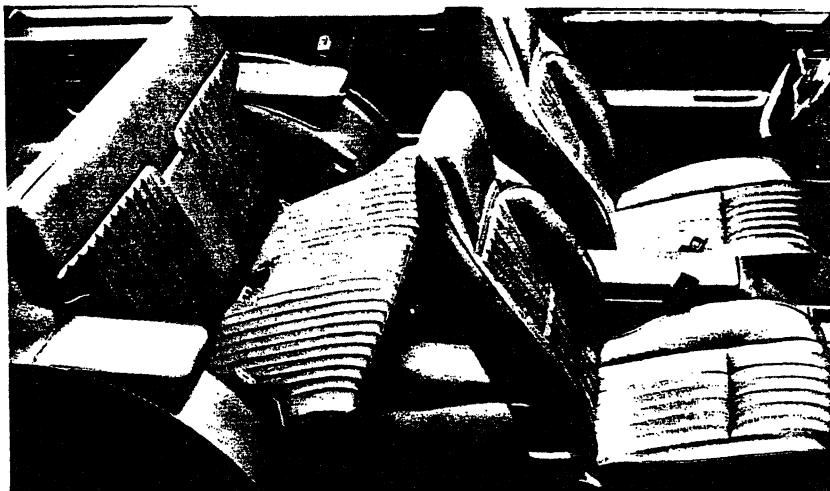
- RH and LH padded armrests integral with door panels. **Door panels have custom cloth upper insert, carpeted lower insert with map pocket plus coin holder in LH door.**
- High-back bucket seats with folding seat backs and a **choice of leather-grained custom vinyl or dual-tone woven special custom cloth trim.** RH seat includes easy-entry feature.
- RH and LH coat hook.
- Black plastic door sill plate. Color-keyed plastic endgate scuff plate.
- Door-operated courtesy and front and rear dome lamps.
- Floor-covering consists of **color-keyed carpeting for entire floor.**
- Tinted glass on all windows.
- Padded, color-keyed LH and RH sunshades. **RH sunshade has a mirror.**
- Convenience tray.
- Grab handles for front passenger and rear seat occupants.
- Deluxe heater with side window defoggers.
- Cigarette lighter with ashtray illumination.
- Gages include speedometer, odometer, fuel level **and trip odometer. Voltmeter, oil pressure gage, and engine temperature gage replace warning lamps.**
- Deluxe, color-keyed 2-spoke steering wheel.
- Headlamp warning buzzer.
- 10-inch rearview mirror **with dual reading lamps.**
- Full-foam headliner with color-keyed cloth cover.
- **Spare tire cover.**
- **Color-keyed cowl kick panels, carpeted lower rear quarter and endgate panels.**

SPORT/ GYPSY

(RPO YC3)

The Sport/Gypsy trim level is an optional trim level for the S/T Blazer/Jimmy model lineup. It is designed to offer buyers an increased level of comfort and convenience features compared to the S-10/T-10/Sierra trim level and the optional Tahoe/Sierra Classic trim level.

The following features are standard. Bold type denotes equipment in addition to or replacing that of the Tahoe/Sierra Classic trim level:



Some equipment shown may be optional or extra cost.

POWERTEAM/CHASSIS

- 2.8-liter V6 engine with Electronic Fuel Injection (EFI) is standard. It produces 125 horsepower @ 4800 rpm and 150 lb. ft. of torque @ 2400 rpm.
- Single electric high-note horn.
- Floor-mounted 5-speed manual overdrive transmission.
- Front suspension is an independent design with coil springs on 4x2 models and an independent driving axle with torsion bars on 4x4 models.
- Rear suspension is a two-stage multi-leaf spring design.
- Power-assisted brakes; front disc rear wheel anti-lock brake system (operates in 2WD only on 4x4 models).
- Power steering.
- Frame is an all-welded ladder type with channel design and boxed front-end section.
- 20.0-gallon fuel tank.

EXTERIOR

- **Bumpers are color-keyed to lower accent color with black rub strips.**
- **Grille is black chrome with matching headlamp bezels.**
- **Black wheel opening moldings.**
- Black body side moldings with bright insert plus rear quarter window moldings.
- Hood insulators and cowl to fender seals.
- Rally wheels on 4x2 models. Trim Rings on 4x4 models.
- Door handles/lock cylinders with **black finish.**
- All-season steel-belted radial tires.
- RH and LH fixed arm mirrors with adjustable heads, black finish.
- **Two-tone paint (Conventional or Special).**
- **Black chrome taillamp trims.**
- Black tailgate applique.

INTERIOR

- RH and LH padded armrests integral with door panels. Door panels have custom cloth upper insert, carpeted lower insert with map pocket plus coin holder in LH door.
- High-back **reclining bucket seats with folding seat backs and deluxe cloth.** RH seat includes easy-entry feature.
- RH and LH coat hook.
- Black plastic door sill plate. Color-keyed plastic endgate scuff plate.
- Courtesy and front and rear dome lamps.
- **Floor console.**
- Floor-covering consists of color-keyed carpeting for entire floor.
- Tinted glass on all windows.
- Padded, color-keyed LH and RH sunshades. RH sunshade has a mirror.
- Gages include speedometer, odometer, fuel level and trip odometer. Voltmeter, oil pressure gage, and engine temperature gage replace warning lamps.
- Convenience tray.
- Grab handles for front passenger and rear seat occupants.
- Deluxe heater with side window defoggers.
- Cigarette lighter with ashtray illumination.
- **Sport steering wheel with simulated leather look.**
- Headlamp warning buzzer.
- 10-inch rearview mirror with dual reading lamps.
- Full-foam headliner with color-keyed cloth cover.
- Spare tire cover.
- Color-keyed cowl kick panels, carpeted lower rear quarter and endgate panels. **Deluxe Cloth trim panel inserts.**

POWERTEAMS

KEY: S STANDARD
O OPTIONAL
—NOT OFFERED

RED NOT AVAILABLE W/ CALIFORNIA EMISSIONS
BOLD NOT AVAILABLE W/HIGH ALTITUDE EMISSIONS
H HIGH ALTITUDE EMISSIONS ONLY
C CALIFORNIA EMISSIONS ONLY

MODEL	TRANSMISSION				AXLES					GVWR
	MAN 4-SPD	MAN 5-SPD	AUTO 3-SPD	AUTO 4-SPD	←ECONOMY→			POWER→		
S-10/S-15 BLAZER/JIMMY 4X2 S10516/E55						3.08	3.42	3.73	4.11	
ENGINE										
2.8L V6 (LL2)	—	S	—		—	S ¹	O ^{2,3}	H ⁴ and C ⁵		
4.3L V6 (LB4)	—		—	S	S ¹	O	—	—		

¹ N/A G80 LOCKING DIFFERENTIAL ² N/A G80 LOCKING DIFFERENTIAL w/CALIFORNIA EMISSIONS ³ STANDARD RATIO w/CALIFORNIA EMISSIONS
⁴ STANDARD RATIO w/HIGH ALTITUDE EMISSIONS ⁵ OPTIONAL RATIO w/CALIFORNIA EMISSIONS

MODEL	TRANSMISSION				AXLES					GVWR
	MAN 4-SPD	MAN 5-SPD	AUTO 3-SPD	AUTO 4-SPD	←ECONOMY→			POWER→		
T-10/T-15 BLAZER/JIMMY 4X4 T10516/E55						3.08	3.42	3.73	4.11	
ENGINE										
2.8L V6 (LL2)	—	S	—		—	—	S ¹	O		
4.3L V6 (LB4)	—		—	S	S ¹	O ²	—	—		

¹ N/A P235/75R15 TIRES OR G80 LOCKING DIFFERENTIAL ² STANDARD RATIO w/HIGH ALTITUDE EMISSIONS

HORSEPOWER AND TORQUE RATINGS (S/T BLAZER/JIMMY)

ORDERING CODE	ENGINES	
	2.8L V6	4.3L V6
	LL2	LB4
SAE NET HORSEPOWER @ RPM	125 @ 4800	160 @ 4000
SAE NET TORQUE LB. FT. @ RPM	150 @ 2400	230 @ 2800
FUEL SYSTEM	EFI	EFI
CLUTCH SIZE	9.13	—
STD. Battery (Cold Cranking Amps @ 0°F)	525	525

SPECIFICATIONS

TWO-WHEEL DRIVE (S)

FOUR-WHEEL DRIVE (T)

MODEL	S-10/S-15 BLAZER/JIMMY 4X2	T-10/T-15 BLAZER/JIMMY 4X4
MODEL NUMBER	S10516/E55	T10516/E55
SUSPENSION (STD.)		
Maximum Available Payload (lbs.)	1000	1000
Total GVWR Range (lbs.)	3500-4625	3725-4995
FRONT: GAWR (lbs.)	2200	2400
REAR: GAWR (lbs.)	2600	2700
FRONT: Suspension Type	Ind. Coil Spring	Ind. Driving Axle Torsion Bar
Standard Spring Capacity (lbs.)	1100	1200
REAR: Suspension Type	Semi-Elliptic 2-Stage Multi-Leaf	Semi-Elliptic 2-Stage Multi-Leaf
Standard Spring Capacity (lbs.)	1350	1350
Leaves Per Spring	4	4
Leaf Total Thickness (in.)	1.48	1.48
FRONT: Shock Absorber Piston Diameter (mm)	25	25
REAR: Shock Absorber Piston Diameter (mm)	25	25
FRONT: Axle Type	Independent	Independent
Make	—	GM
Maximum Capacity (lbs.)	2200	2400
Standard Hub Locks	—	Differential Lockout
Pinion/Ring Gear Type	—	Hypoid
REAR: Axle Type	Semi-Floating	Semi-Floating
Make	GM	GM
Maximum Capacity (lbs.)	2700	2700
Pinion/Ring Gear Type	Hypoid	Hypoid
Ratio	See Powerteams	See Powerteams
Standard Tires	Tubeless All-Season B/W SBR P195/75R15	Tubeless All-Season B/W SBR P195/75R15
Tire Capacity (lbs. each)	1342	1342
Inflation (PSI) max.	35	35
Wheel Size (in.)	15 x 6.00	15 x 6.00
Wheel Capacity (lbs. each)	1453	1453
Bolt Holes	5	5
Bolt Circle Diameter (in.)	4.75	4.75
Rim Width (in.)	6.0	6.0
Offset (mm)	0	50
Revolutions per mile @ 45 MPH	787	787

SPECIFICATIONS

TWO-WHEEL DRIVE (S)

FOUR-WHEEL DRIVE (T)

MODEL	S-10/S-15 BLAZER/JIMMY 4X2	T-10/T-15 BLAZER/JIMMY 4X4
MODEL NUMBER	S10516/E55	T10516/E55
STANDARD FRAME (36,000 PSI)		
Side Rail Dimensions: Width (in.)	2.28	2.28
Depth (in.)	5.00	5.00
Thickness (in.)	.118	.118
Section Modulus Rails only	1.78	1.78
RBM of Frame	69,420	69,420
Width Over Rails Front (in.)	30.9	30.9
Rear (in.)	40.35	40.35
Overall Length of Rail (in.)	162.46	162.46
STEERING		
Type	Integral Power	Integral Power
Steering Ratio	17.5:1	17.5:1
Turning Diameter: Curb-To-Curb (ft.)	34.6	35.4
Wall-To-Wall (ft.)	36.4	37.1
BRAKES		
GVWR (Payload) (lbs.)	1000	1000
Type	Vac. Power Front Disc/Rear Drum with Anti-Lock System	Vac. Power Front Disc/Rear Drum with Anti-Lock System
Booster (Diaphragm Diameter) (in.)	7.9 x 7.9 ¹ Tandem	7.9 x 7.9 ¹ Tandem
Front Rotor Size (Diameter x Thickness) (in.)	10.5 x 1.03	10.5 x 1.03
Front Facing Contact Per Axle (sq. in.)	31.68	31.68
Rear Drum Size (Diameter x Width) (in.)	9.5 x 2.0	9.5 x 2.0
Rear Facing Contact Per Axle (sq. in.)	63.73	63.73
Parking Brake	Cable To Rear Wheels	Cable To Rear Wheels

¹9.5 x 9.5 Tandem Booster w/LB4 4.3L V6 engine.

TWO-WHEEL DRIVE (S)		FOUR-WHEEL DRIVE (T)		
MODEL	S-10/S-15 BLAZER/JIMMY 4X2	T-10/T-15 BLAZER/JIMMY 4X4		
MODEL NUMBER	S10516/E55	T10516/E55		
ELECTRICAL				
Engines Std./Opt.	2.8L V6	4.3L V6	2.8L V6	4.3L V6
Standard Battery:				
@ 0°F	525	525	525	525
@ -20°F	405	405	405	405
Reserve Capacity Minutes @ 80°F	90	90	90	90
Optional Battery:	UA1	UA1	UA1	UA1
Cold Cranking Amps				
@ 0°F	630	630	630	630
@ -20°F	490	490	490	490
Reserve Capacity Minutes @ 80°F	115	115	115	115
Auxiliary Battery:				
@ 0°F	—	—	—	—
@ -20°F	—	—	—	—
Reserve Capacity Minutes @ 80°F	—	—	—	—
Standard Generator:				
Max. Capacity (Amps)	85	85	85	85
Max. Watts @ 12 Volts	1020	1020	1020	1020
Nominal Amp @ Idle (Approx.)	30	30	30	30
Drive Pulley Ratio	2.7:1	2.7:1	2.7:1	2.7:1
Model Number	CS130	CS130	CS130	CS130
Optional Generator:				
Max. Capacity (Amps)	—	—	—	—
Max. Watts @ 12 Volts				
Nominal Amp @ Idle (Approx.)	—	—	—	—
Drive Pulley Ratio	—	—	—	—
Model Number	—	—	—	—

SPECIFICATIONS

TWO-WHEEL DRIVE (S)

FOUR-WHEEL DRIVE (T)

KEY: REG TYPE MANUAL TRANS AND AUTOMATIC TRANS RED TYPE MANUAL TRANS ONLY
 BOLD TYPE AUTOMATIC TRANS ONLY

MODEL	S-10/S-15 BLAZER/JIMMY 4X2		T-10/T-15 BLAZER/JIMMY 4X4	
MODEL NUMBER	S10516/E55		T10516/E55	
STANDARD COOLING SYSTEM				
Engine	2.8L V6	4.3L V6	2.8L V6	4.3L V6
Standard Radiator Thickness (in.)	.98	.93	.98	.93
Total System Cap. (gal.)	2.9	3.0	2.9	3.0
Standard Fan (No. Blades x Diameter x Pitch)	5 x 15 x 2.05	3 x 18 x 2.0	5 x 15 x 2.05	3 x 18 x 2.0
OPTIONAL COOLING SYSTEMS				
Engine	2.8L V6	4.3L V6	2.8L V6	4.3L V6
AUTOMATIC TRANS.	—	MX0	—	MX0
Radiator Thickness (in.)	—	.93	—	.93
Total Systems Cap. (gal.)	—	3.0	—	3.0
Fan (No. Blades x Diameter x Pitch)	—	3 x 18 x 2.0	—	3 x 18 x 2.0
OPT. H.D. RADIATOR	—	V01	—	V01
Radiator Thickness (in.)	—	.93	—	.93
Total System Cap. (gal.)	—	3.0	—	3.0
Fan (No. Blades x Diameter x Pitch)	—	3 x 18 x 2.0	—	3 x 18 x 2.0
OPT. AIR CONDITIONING	C60	C60	C60	C60
Radiator Thickness (in.)	.98	.93	.98	.93
Total System Cap. (gal.)	2.9	3.0	2.9	3.0
Fan (No. Blades x Diameter x Pitch)	5 x 16.0 x 2.83	5 x 19 x 2.5	5 x 16.0 x 2.83	5 x 19 x 2.5
OPT. ENG. OIL COOLER	—	KC4	—	KC4
Radiator Thickness (in.)	—	.93	—	.93
Total System Cap. (gal.)	—	2.9	—	2.9
Fan (No. Blades x Diameter x Pitch)	—	3 x 18 x 2.0	—	3 x 18 x 2.0
OPT. H.D. RADIATOR AND TRANS. OIL COOLER	—	V02	—	V02
Radiator Thickness (in.)	—	1.34	—	1.34
Total System Cap. (gal.)	—	3.0	—	3.0
Fan (No. Blades x Diameter x Pitch)	—	3 x 18 x 2.0	—	3 x 18 x 2.0

TWO-WHEEL DRIVE (S)

MODEL	S-10/S-15 BLAZER/JIMMY 4X2
MODEL NUMBER	S10S16/E55
EXTERIOR DIMENSIONS	
BODY:	
Wheelbase (in.)	100.5
Overall Length (in.)	170.3
Overall Height (in.)	64.1
Overall Width (in.)	65.4
Bumper to Axle—Front (in.)	30.6
—Rear (in.)	39.2
Ground To Top of Rear Load Floor (in.)	30.8
Ground Clearance	
—Front (in.)	9.4
—Rear (in.)	7.2
INTERIOR	
Headroom (in.) Front/Rear	39.1/38.7
Leg Room (in.) Front/Rear	42.5/35.5
Shoulder Room (in.) Front/Rear	53.9/56.1
Hip Room (in.) Front/Rear	50.5/37.6
Cargo Volume w/Rear Seat Up (cu. ft.)	28.1
Cargo Volume w/Rear Seat Folded (cu. ft.)	67.2
Cargo Length w/Rear Seat Up (in.)	35.5
Cargo Length w/Rear Seat Folded (in.)	68.6
Cargo Area Width w/Rear Seat Up (in.)	53.4
Cargo Area Height w/Rear Seat Up (in.)	35.0
FUEL TANK	
Std. Tank Nominal (gal.)	20
Location of Tank	Inboard LH Frame Rail
Location of Filler	Left Side
Optional Tank Nominal (gal.)	—
Location of Tank	—
Location of Filler	—

SPECIFICATIONS

FOUR-WHEEL DRIVE (T)

MODEL	T-10/T-15 BLAZER/JIMMY 4X4
MODEL NUMBER	T10516/E55
EXTERIOR DIMENSIONS	
BODY:	
Wheelbase (in.)	100.5
Overall Length (in.)	170.3
Overall Height (in.)	64.3
Overall Width (in.)	65.4
Bumper to Axle—Front (in.)	30.6
—Rear (in.)	39.2
Ground To Top of Rear Load Floor (in.)	29.6
Ground Clearance	
—Front (in.)	6.1
—Rear (in.)	7.2
INTERIOR	
Headroom (in.) Front/Rear	39.1/38.1
Leg Room (in.) Front/Rear	42.5/35.5
Shoulder Room (in.) Front/Rear	53.9/56.1
Hip Room (in.) Front/Rear	50.5/37.6
Cargo Volume w/Rear Seat Up (cu. ft.)	28.1
Cargo Volume w/Rear Seat Folded (cu. ft.)	67.2
Cargo Length w/Rear Seat Up (in.)	35.5
Cargo Length w/Rear Seat Folded (in.)	68.6
Cargo Area Width w/Rear Seat Up (in.)	53.4
Cargo Area Height w/Rear Seat Up (in.)	35.0
FUEL TANK	
Std. Tank Nominal (gal.)	20
Location of Tank	Inboard LH Frame Rail
Location of Filler	Left Side
Optional Tank Nominal (gal.)	—
Location of Tank	—
Location of Filler	—

■ This page contains the weights of trim, paint and optional equipment. These weights are used when calculating payload capacity, gross axle weight, axle reserve capacity, gross vehicle weight and total reserve capacity.

For more information on calculating these capacities, consult the "FORMS" section of this book.

MODEL WEIGHTS

MODEL/BODY	WEIGHT (lbs.)		
	FRONT	REAR	TOTAL
S10516/E55	1693	1618	3311
T10516/E55	1936	1662	3598

CURB WEIGHTS

MODEL/BODY	WEIGHT (lbs.)		
	FRONT	REAR	TOTAL
S10516/E55	1555	1456	3011
T10516/E55	1798	1500	3298

TRIM WEIGHTS

CODE	CONDITION	WEIGHT (lbs.)	
		FRONT	REAR
***4		0	0

PAINT WEIGHTS

CODE	CONDITION	WEIGHT (lbs.)	
		FRONT	REAR
ZY1		0	0
ZY2		0	0
ZY3		1	0
ZY4		4	4

OPTION WEIGHTS

CODE	CONDITION	WEIGHT (lbs.)	
		FRONT	REAR
-A-			
AA3		0	0
AD3		5	4
AD5		1	2
AJ1		0	0
AM7	w/o YC2/YC3	10	62
	w/YC2/YC3	11	61
A78		0	1
-B-			
BG9		-3	-8
B32		4	3
B33		1	1
B74		4	4
B84	w/o YC3	4	4
	w/YC3	6	6
B93		0	0
B96		1	1

OPTION WEIGHTS—Continued

CODE	CONDITION	WEIGHT (lbs.)	
		FRONT	REAR
-C-			
C25		9	7
C51		0	4
C60	w/LL2/LB4	43	4
-D-			
DC4		0	0
D34		1	0
D44		1	1
D45		1	1
D55		5	2
D90		0	0
D96		0	0
-F-			
F51		1	2
F60		1	2
-G-			
GQ1		0	0
GT4		0	0
GU6		0	0
G80		0	4
-H-			
H04		0	0
-K-			
KC4		8	0
K05		1	0
K34		6	0
-L-			
LB4	S10	124	6
	T10	63	2
LL2	S10	54	6
	T10	58	6
-M-			
MM5	S10 w/LN8	1	0
	w/LL2	4	1
	T10 w/LN8	5	2
	w/LL2	8	3
MX0	S10 w/LB4	62	20
	T10 W/LB4	62	20
-N-			
NA5		0	0
NA6		0	0
N51		0	0
N79		0	-1
N90	w/o QEB	-3	-3
	w/QEB	-8	-8
-P-			
P06		2	2
P16		-13	-48
P17		0	5
-Q-			
QAR		0	0
QCE		3	3
QCF		3	3
QEB	w/P16	8	69
	w/o P16	27	49
QJL		5	5
QJT		5	5
Q1C		3	5

OPTION WEIGHTS—Continued

CODE	CONDITION	WEIGHT (lbs.)	
		FRONT	REAR
-T-			
TT4		0	0
-U-			
UA1		10	-1
UM6		9	5
UU9		6	3
UX1		9	5
U26		1	0
-V-			
VE6		1	2
VR2		-5	28
V01		1	0
V02		5	0
V10	w/o YC2, YC3	17	1
	w/YC2, YC3	15	1
V54		4	7
V55		4	6
V76		6	0
-Y-			
YC2	w/o YH9	30	24
	w/YH9	28	21
YC3	S10516	39	29
	T10516		
	w/o YH9	42	32
	w/YH9	37	22
YF5		4	2
YG4		0	0
YH9	w/o YC2	8	5
	w/YC3	1	0
-Z-			
ZJ7		-1	-1
ZK4	S10516		
	w/o P16	-1	12
	w/P16	-17	28
	T10516		
	w/o P16	0	6
	w/P16	-15	21
ZK5	S10516		
	w/o P16	-1	13
	w/P16	-18	30
	T10516		
	w/o P16,		
	QEB	0	8
	w/o P16		
	w/QEB	-2	20
	w/P16, w/o		
	QEB	-16	23
	w/P16, QEB	-22	40
ZM5		21	0
ZM6		-4	11
ZM7		3	0
ZM8		0	0
ZQ2		6	2
Z53		1	0
Z72		-5	30
Z82		-13	51
12A		0	0
17A		0	0
19A		0	0
67A		0	0
90A		0	0

OPTION SELECTION

KEY: S STANDARD
O OPTIONAL
— NOT AVAILABLE

1. S-10/15 4X2 Blazer/Jimmy (S10516 E55)
2. T-10/15 4X4 Blazer/Jimmy (T10516 E55)

OPTION	CODE	DESCRIPTION	RESTRICTIONS	MODELS																					
				2-WHEEL D'RIVE						4-WHEEL DRIVE															
				1	2	3	4	5	6	7	8	9	10	11	12										
AIR CONDITIONING	C60		With LB4 Engine incl V01 when V02 is Not Ordered	O																					
AXLE, REAR	G80	Locking Differential	Avail on Opt Ratio only, except where only one ratio is available	O																					
BATTERY	UA1	Heavy-Duty, 630 Cold Cranking Amps Delco Freedom; Incl w/V10 Cold Climate		O																					
BUMPER EQUIPMENT Bumpers, Front and Rear Color-Keyed w/Rub Strips	VE6	Bumper and Rub Strip Match Body Color	Reqs ZY2, ZY3 or ZY4 Paint, incl w/YC3 or YH9	O																					
CARRIER, LUGGAGE Painted Black Bright	V54 V55	Roof Top	NA YH9 or YC3	O O																					
CARRIER, TIRE OUTSIDE SPARE	P16 PNV	Incls Exterior Cover Spare Tire Carrier Not Desired	Reqs ZK4 or ZK5 Spare	O S																					
COLD CLIMATE PACKAGE	V10	Incls UA1 Battery, Anti-Freeze, Full Dash, Door Insulation, Hood Blanket, Extra Floor Insulation and Backlite Moldings		O																					
CONSOLE	D55	Incl w/YH9 Pkg. w/YC2; Incl. w/YC3		O																					
COOLING SYSTEM H.D. Engine Oil Cooler	KC4		Reqs LB4 Eng and V01 or V02 Cooling	O																					
H.D. Radiator	V01	Incl w/C60 Air	N/A V02 Cooling; Reqs LB4 Eng	O																					
Radiator and Transmission Oil Cooler	V02		Reqs LB4 Eng	O																					
COVER, SPARE TIRE	P17	Incl w/YC2 and YC3	N/A P16 Carrier	O																					
DEFLECTOR, AIR	C51	Roof Mounted w/Black Finish		O																					
DRIVER CONVENIENCE	ZM7 ZM8	Incls Comfortilt Steering and Intermittent Wiper System Incls Rear Defogger and Power Tailgate Release		O O																					
ENGINES (See Powerteams for Details) 2.8 Liter EFI V6 4.3 Liter EFI V6	LL2 LB4		Reqs MM5 Trans Reqs MX0 Trans	S O																					
FLOOR COVERING Full Floor, Rubber, Color-Keyed Mats, Removable, Color-Keyed, Front, Rubber Mats, Removable, Color-Keyed, Rear, Rubber	BG9 B32 B33	Replaces Carpeting	N/A B32 or B33 Mats; Avail w/YC2 or YC3 Only Avail w/YC2 or YC3 Only Avail w/YC2 or YC3 Only	O O O																					
GAGES	Z53	Incls Voltmeter, Temperature and Oil Pressure w/Trip Odometer; Incl w/YC2, YC3 and U52		O																					

OPTION SELECTION

KEY: S STANDARD
 O OPTIONAL
 — NOT AVAILABLE

1. S-10/15 4X2 Blazer/Jimmy (S10516 E55)
 2. T-10/15 4X4 Blazer/Jimmy (T10516 E55)

OPTION	CODE	DESCRIPTION	RESTRICTIONS	MODELS																								
				2-WHEEL DRIVE								4-WHEEL DRIVE																
				1								2																
GAGES-ELECTRONIC	U52	Electronic Readout Voltmeter, Temperature, Oil Pressure, Fuel, Speedometer and Tachometer		O													O											
GLASS Deep Tinted w/Light Tinted Rear Window Deep Tinted	AA3	Incl w/YH9 Pkg.	N/A AJ1 Glass	O													O											
	AJ1	Lift Glass and Quarter Windows		O													O											
HEADLAMPS, HALOGEN	TT4			O													O											
HEATER, ENGINE BLOCK	K05			O													O											
HIGH COUNTRY/TIMBERLINE PACKAGE	YH9	Incls AA3 Deep Tinted Glass, D44 Black Mirrors, DWI Graduated Color Stripe, Front Fender Nameplate, and Gold Painted Aluminum Cast Wheels w/YC2 Incls. A78 Reclining Seat Backs, D55 Console and VE6 Color-Keyed Bumpers and Black Grille.	N/A D90 or D96 Striping; N/A N90 Aluminum Wheels Reqs YC2 or YC3 w/White Lettered Tires, ZK4 or ZK5 Spare, ZY3 Paint w/19 Midnight Black Color Code 1 and 67 Nevada Gold Metallic Color Code 2 Color Combination; w/YC2 Reqs Saddle Special Custom Cloth or Saddle Leather Trim														O											
INSTRUMENTATION, ELECTRONIC	U52	Full Gage Type, Incls Tachometer		O													O											
LAMP	U26	Engine Compartment		O													O											
MIRRORS Visor Exterior, Below-Eye-Line Type Exterior, Below-Eye-Line Type Interior, Rearview	D34	Incl w/YC2 or YC3		O													O											
	D44	Black; Incl w/YH9 Pkg		O													O											
	D45	Bright	N/A YC3	O													O											
	DC4	Tilting w/Dual Reading Lamps; Inc. w/YC2 and YC3		O													O											
MOLDINGS Body Side and Wheel Opening Wheel Opening, Black Wheel Opening, Bright	B84	Incl w/YC3, YC2 and ZY2 or ZY4 Paint, Incls B96 Mldgs		O													O											
	B74	Incl w/YC3	N/A B96 Moldings	O													O											
	B96	Incl w/B84 Mldgs; Incl w/YC2	N/A B74 Moldings	O													O											
OPERATING CONVENIENCE PACKAGE	ZQ2	Incls Power Door Locks and Power Windows		O													O											
PAINT, EXTERIOR Solid Custom Two-Tone Special Two-Tone Deluxe Two-Tone	ZY1			S													S											
	ZY2	Incls B84 Body Side Molding		O													O											
	ZY3		Reqs D90/D96 Body Stripe	O													O											
	ZY4	Incls B84 Body Side Molding		O													O											

OPTION SELECTION

KEY: S STANDARD
O OPTIONAL
- NOT AVAILABLE

1. S-10/15 4X2 Blazer/Jimmy (S10516 E55)
2. T-10/15 4X4 Blazer/Jimmy (T10516 E55)

OPTION	CODE	DESCRIPTION	RESTRICTIONS	MODELS																		
				2-WHEEL DRIVE						4-WHEEL DRIVE												
				1						2												
RADIO EQUIPMENT: Electronically Tuned AM/FM Stereo Radio	UU9	14 Presets, Digital Display, 2 4" x 6" Front Speakers, 2 6" x 9" ERS Rear Speakers, 28 Watts Total Power Output		O									O									
Electronically Tuned AM/FM Stereo Radio w/Seek-Scan, Stereo Cassette Tape and Digital Clock	UM6	14 Presets, Digital Display, 2 4" x 6" Front Speakers, 2 6" x 9" ERS Rear Speakers, 28 Watts Total Power Output		O									O									
Electronically Tuned AM Stereo/FM Stereo Radio w/Seek-Scan, Stereo Cassette Tape w/Search-Repeat, Graphic Equalizer and Digital Clock	UX1	14 Presets, Digital Display, 2 4" x 6" Front Speakers, 2 6" x 9" ERS Rear Speakers, 28 Watts Total Power Output		O									O									
SEATING			Must Order AM7 or YG4 Seat																			
Rear, Folding; 2-Passenger Rear Seat Not Desired	AM7 YG4	Incls Armrests	N/A AM7 Seat	O									O									
SEAT EQUIPMENT	A78	Seat Backs, Reclining; Incl w/YC3, YH9 with YC2 and Leather Seat Trim		O									O									
OFF-ROAD SUSPENSION PACKAGE	ZM6	Incls Gas Shocks, Tow Hooks, Lgr Torsion Bars, Jounce Bumper, Stabilizer Bar, Lgr Body Mounts and P06 Trim Rings	Reqs QEB Tires; N/A F51 Shocks or F60 Suspension	-									O									
SHIELD PACKAGE	ZM5	Incls Shield for Fuel Tank, Transfer Case, Front Differential & Steering Linkage		-									O									
SHOCK ABSORBERS	F51	Front and Rear, Heavy-Duty; Incl w/F60 Suspension	T-10/T-15 N/A ZM6 Suspension Equipment	O									O									
SPARE TIRE, FULL SIZE		Replaces Std Compact Spare	Reqs P16 Carrier or PNV Carrier Not Desired																			
Highway	ZK4		Reqs QCE, QMW, QSA or QYH Tires	O									O									
On-Off Road	ZK5		Reqs QEB, QJL, QJT or QIC Tires	O									O									
SPEED CONTROL, ELECTRONIC	K34			O									O									
SPORT/GYPSY (See Trim Levels for Details)	YC3	Incls Lower Body Color, Front and Rear Bumpers w/Rub Strips, Reclining Seat Backs and Console, Gage Pkg w/Trip Odometer, Spare Tire Cover, Visor Mirror, B84 Body Side Mldgs, Tilting Rearview Mirror w/Dual Reading Lamps and Black Wheel Opening Mldgs; Incls Rally Wheels on S-10/S-15; Incls Wheel Trim Rings on T-10/T-15	Reqs ZY2 or ZY3 Paint	O									O									

OPTION SELECTION

KEY: S STANDARD
 O OPTIONAL
 — NOT AVAILABLE

1. S-10/15 4X2 Blazer/Jimmy (S10516 E55)
 2. T-10/15 4X4 Blazer/Jimmy (T10516 E55)

				MODELS											
				2-WHEEL DRIVE						4-WHEEL DRIVE					
				1						2					
OPTION	CODE	DESCRIPTION	RESTRICTIONS												
STRIPING	D96	Body	(See Color and Trim for Availability)	O						O					
	D90	Sunshine	Reqs ZY1 or ZY3 Paint; w/ZY1 Paint Reqs Stripe Color	O						O					
SUNROOF	AD3	Manual. Non-Removable		O						O					
SUSPENSION EQUIPMENT Front, Heavy-Duty	F60	Incls F51 Shocks; Recommended w/Front-Mounted Accessories	N/A ZM6 Suspension Pkg.	—						O					
OFF-ROAD SUSPENSION PACKAGE	ZM6	Incls V76 Towing Device Special Gas Shocks, Upsized Torsion Bar, Jounce Bumpers, Stabilizer Bar, and Large Body Mounts	Reqs QEB Tires and ZK5 Full Size Spare; N/A F51 Shocks or F60 Suspension	—						O					
TAHOE/ SIERRA CLASSIC (See Trim Levels for Details)	YC2	Incls Visor Mirror, Gage Pkg with Trip Odometer, Spare Tire Cover, Black Body Side Mldgs, Bright Wheel Opening Mldgs, and Tilting Rearview Mirror w/Dual Reading Lamps; Incls Rally Wheels on S-10/S-15, Wheel Trim Rings on T-10/T-15—Incls Compact Spare		O						O					
TIRES (B/W: Blackwall W/W: Whitewall W/L: White Lettered) P195/75R15 B/W	QAR	Incls Front, Rear and Compact Spare All-Season Steel-Belted Radial	(See Powerteams for Axle Restrictions)	S						S					
P205/75R15 B/W	QCE	All-Season Steel-Belted Radial		O						O					
P205/75R15 W/L	QCF	All-Season Steel-Belted Radial		O						O					
P205/75R15 B/W	Q1C	Front Highway and Rear On-Off Road All-Season Steel-Belted Radial		O						—					
P205/75R15 B/W	QJT	Front/Rear On-Off Road Steel-Belted Radial	N/A ZK4 Spare	O						O					
P205/75R15 W/L	QJL	Front/Rear On-Off Road Steel-Belted Radial	N/A ZK4 Spare	O						O					
P235/75R15 W/L	QEB	Front/Rear On-Off Road Steel-Belted Radial	Reqs ZK5 Spare	O						O					
TOWING DEVICE	V76	Two Front Tow Hooks; Incl w/ZM6 Suspension Equipment	T-10/T-15 Only	—						O					
TRAILER HITCH	VR2	Deadweight Type; Incl w/Z72 Trailering		O						O					

OPTION SELECTION

KEY: S STANDARD
O OPTIONAL
— NOT AVAILABLE

1. S-10/15 4X2 Blazer/Jimmy (S10516 E55)
2. T-10/15 4X4 Blazer/Jimmy (T10516 E55)

OPTION	CODE	DESCRIPTION	RESTRICTIONS	MODELS																											
				2-WHEEL DRIVE								4-WHEEL DRIVE																			
				1	2	3	4	5	6	7	8	9	10	11	12	13	14	15	16												
TRAILERING, PACKAGE (See Trailering Guide)	Z72	Light-Duty, Incls 5-Lead Wiring Harness and VR2 Deadweight Trailer Hitch	Reqs V01 or V02 Cooling or C60 Air; N/A Z82 Trailering Equipment	O													O														
TRAILERING SPECIAL EQUIPMENT (See Trailering Guide)	Z82	Heavy-Duty 7-lead Wiring Harness, H.D. Flasher, Weight Dist Hitch Platform	Reqs LB4 Eng, V02 Cooling, KC4 Eng Oil Cooler and 3.42 Rear Axle	O													O														
TRANSMISSIONS (See Powerteams for Details)																															
5-Speed Manual w/Overdrive	MM5		N/A LB4 Eng	S													S														
4-Speed Auto w/Overdrive	MX0		N/A LL2 Engine	O													O														
WHEEL, SPARE	N79	Full Size	Reqs ZK4 or ZK5 Spare; S-10/S-15 Reqs ZJ7 Rally Wheels w/o YC3 or YC2; T-10/T-15 Reqs N90 Aluminum Wheels	O													O														
WHEEL TRIM	P06	Trim Rings; Incl w/ZM6 Susp Equip; Incl w/YC2 or YC3 on T-10/T-15	N/A N79 Spare Wheel, YC3 or YC2 on S-10/S-15	O													O														
WHEELS																															
Aluminum, Cast	N90	Incls Base Wheel Spare	N/A QAR P195 Tires or YH9	—													O														
Aluminum, Cast-Spare	N79	Reqs N90 and ZK4/ZK5	Incl w/YC2 or YC3	O													—														
Rally	ZJ7	Incls P06 Trim Ring		O													O														
WINDOWS	AD5	Sliding Side		O													O														
WINDOW WIPER/WASHER, REAR	C25		w/AJ1 Glass Reqs ZM8 Conv. Pkg.	O													O														

S-10 BLAZER/JIMMY

S-10 Blazer/Jimmy's compact utility and style are attractive selling features. Whether shoppers are looking for a station wagon alternative or a gutsy offroad vehicle, the S-10 Blazer/Jimmy has a strong story to tell.

POWERTEAM LINEUP

Now, customers can choose between the standard 2.8L V6 engine with Electronic Fuel Injection (EFI) or the optional 4.3L Vortec V6 with EFI for even more horsepower and torque. In either case, these engines incorporate Electronic Fuel Injection (EFI), which eliminates the carburetor, is constantly computer-tuned to compensate for changes in weather and operating conditions. Also point to the High Energy Ignition system that offers quicker starts, less battery drain and longer life to spark plugs for lower maintenance costs. Its solid state design does away with the cost of replacing points and condenser for simpler maintenance.

INSTA-TRAC "SHIFT-ON-THE-FLY"

The ability to shift into 4-wheel drive appeals to prospects because they like to go off-road for recreational reasons or their work takes them there. Others just like it for the added security in rain, snow or mud. Insta-Trac, the standard central disconnect front axle/transfer case 4-wheel drive system on all 4X4 S-10 Blazer/Jimmys makes this simple for drivers because they can switch from 2WD to 4-Hi and back by pulling a lever—at any speed. There's also a 4-Lo that more than doubles available torque when they need extra traction. Point out to off-roaders the availability of the Under Body Shield Package and Off-Road Suspension Package. (See Options for details)

RIDE COMFORT

Blazer/Jimmy prospects are going to want assurance that they're going to have a comfortable ride and you can point to features that will make that point. For instance, whether it's a 2- or 4-wheel drive utility vehicle, the front suspension is independent and computer-matched to the truck's GVWR. The front wheels react individually to bumps and jolts for impressive ride characteristics. In the

rear, you can point to the two-stage, multi-leaf springs that automatically adjust to the load conditions and provide a consistently smooth ride whether the back is loaded with cargo or not. Rubber bushings reduce noise and ride harshness. Also standard are low-pressure gas shock absorbers that aid in dampening road jolts while maintaining good road contact. In addition, standard steel-belted radial tires improve traction for a more controlled ride.

REAR WHEEL ANTI-LOCK BRAKING SYSTEM

One of the newest technologies to show up in vehicles like Corvette, C/K Pickups and now S-10 Blazer/Jimmy is the Rear Wheel Anti-Lock Braking System (ABS). Tell prospects how the rear-wheel anti-lock brake system is designed to help control rear-wheel lockup during severe braking applications, regardless of the load. Whenever braking occurs, a microcomputer-based electronic unit monitors the rate of slowdown of the rear wheels. If the rear wheels spin down too quickly, the computer regulates rear brake line pressure through a set of control valves. By regulating brake line pressure, rear tires remain in rolling contact with the road surface. As a result, the truck maintains its directional stability even during hard braking.

ADVANCED ENGINEERING AND CONSTRUCTION

Whether your prospects need a 4WD sport utility vehicle for recreational or vocational purposes, or a 2WD station wagon alternative, they're going to want a sturdy truck that will stand up to rigorous use and you'll be able to point out why S-10 Blazer/Jimmy offers that built-in strength. Tell them about the frame with the box-section front that supports the engine and front suspension and adds strength for front-mounted applications. Also, the C-section (channel-type) riveted side rails with cross members that form the full-length ladder-type frame is a time-tested design that resists twisting and flexing for extra strength and load carrying ability. Show prospects features like the precise door fit and remind them of the advanced electronic quality control that assures precise fit of all pieces.

INTERIOR COMFORT AND CONVENIENCE

S-10 Blazer/Jimmy buyers expect a high level of interior comfort and convenience. The best way to demonstrate the standard features and discuss available options is during a demo drive when they can sit behind the wheel and experience the clean, functional instrument panel that puts controls and switches at their fingertips. Mention that the instrument panel and seats were designed for the occupants' comfort over the long haul. For cargo storage, prospects will appreciate the 28.1 cubic feet behind the upright optional rear seat and the convenient 67.3 cubic feet of flat storage space when the seat is folded. You can also point out what features the "up" trim levels add to increase luxury and convenience during the demo drive.

ANTI-CORROSION

S-10 Blazer/Jimmy is carefully designed and built to resist corrosion, so the application of additional rustproofing is neither necessary nor required. Chevrolet's confidence in its extensive anti-corrosion protection is reflected in a new-truck warranty which includes 6-year/100,000-mile rust-through protection.

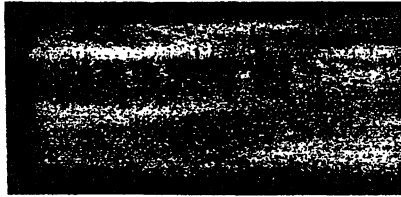
EXTERIOR COLORS

■ The paint samples below are representative of the exterior colors offered on the S/T Blazer/Jimmy line. Refer to the Color and Trim availability charts to determine specific availability. Red type indicates a new color for 1989.

12 FROST WHITE

17 SILVER MET. (secondary only)

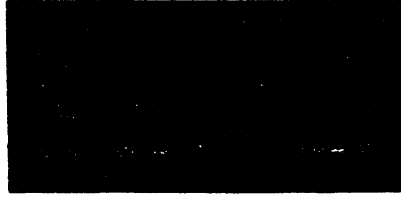
19 MIDNIGHT BLACK



24 ASPEN BLUE MET.

28 GALAXY BLUE MET.

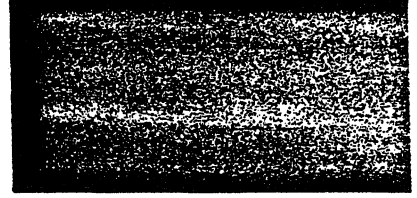
37 WHEAT



40 WOODLANDS BROWN MET.

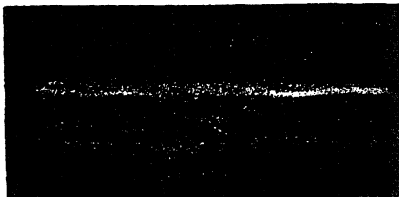
44 EMERALD MET.

67 NEVADA GOLD MET.



72 APPLE RED

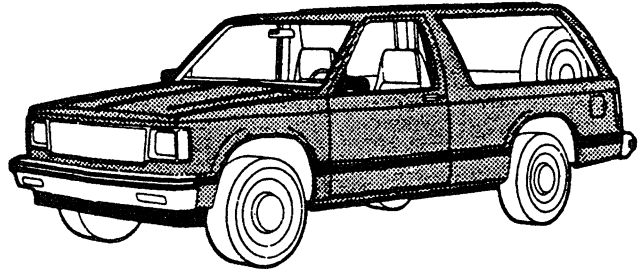
90 STEEL GRAY MET.



COLOR COMBINATIONS

SOLID COLOR (ZY1)

Solid paint (ZY1) is standard on all models. All painted areas of the cab, front end sheet metal, and box are the same color. The following interior colors are those recommended by Chevrolet/GMC, however, any available interior trim color may be ordered with one of these exterior colors unless otherwise specified.



KEY: —NOT AVAILABLE

EXTERIOR COLORS		STRIPE COLORS	INTERIOR COLORS			
COLOR 1	COLOR 2	D96	Blue ¹	Carmin ¹	Charcoal	Saddle
12 Frost White	—	Blue	•			
	—	Red		•		
	—	Red			•	
	—	Gold				•
19 Midnight Black	—	Red	—	•		
	—	Silver			•	
	—	Gold	—			•
24 Aspen Blue Met.	—	Silver	•		•	
28 Galaxy Blue Met.	—	Blue	•		•	
37 Wheat	—	Gold			•	•
40 Woodlands Brown Met.	—	Gold				•
44 Emerald Met.	—	Silver			•	
	—	Gold	—	—		•
67 Nevada Gold Met.	—	Lt. Brown			•	•
72 Apple Red	—	Silver		•	•	
90 Steel Gray Met.	—	Red	—	•		—
	—	Silver			•	

¹ Not available in Leather interior.

TYPE COLORS

CUSTOM VINYL



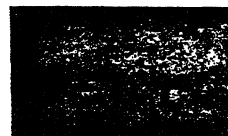
BLUE



CARMINE



CHARCOAL



SADDLE

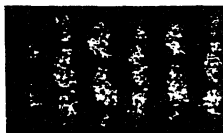
SPECIAL CUSTOM CLOTH



BLUE



CARMINE



CHARCOAL



SADDLE

DELUXE CLOTH



CHARCOAL



SADDLE

LEATHER



CHARCOAL

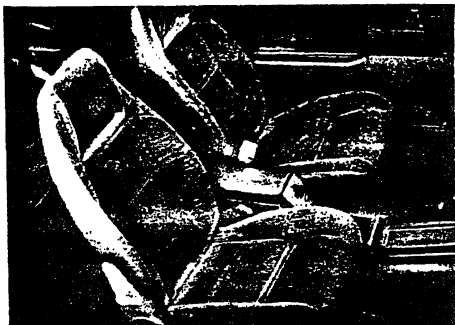


SADDLE

SEATS

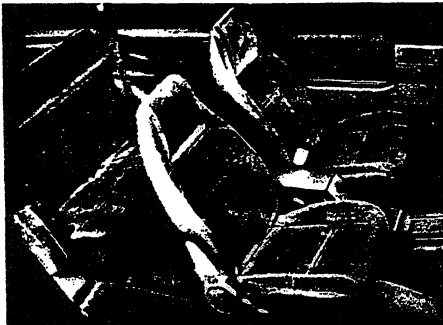
■ STANDARD BUCKET SEATS

This standard feature consists of two high back bucket-type seats with foam padding and folding backrests with interior latches. RH seat includes an easy-entry feature.



■ REAR FOLDING SEAT

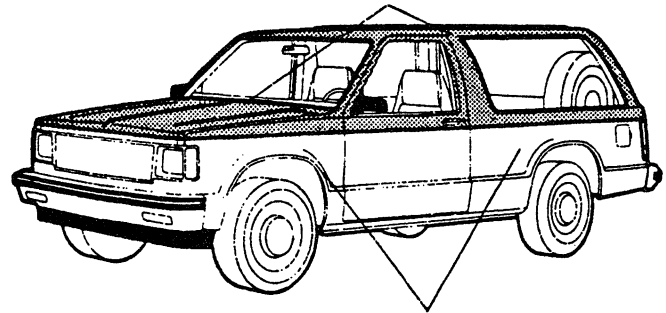
This two-passenger seat is available on all models, and seat trim matches front seats when Custom Vinyl, Special Custom cloth or genuine leather is ordered.



**SPECIAL
TWO-TONE
(ZY3)**

Special two-tone (ZY3) paint is available on all models. It may be substituted on YC5 Sport/Gypsy models in place of the ZY2 conventional two-tone. Color code 1 is applied to the areas above the belt styling crease line, and color code 2 is applied to the areas below the line. The following combinations are those recommended by Chevrolet/GMC. The only available color code 1/color code 2 exterior color combinations are those shown below, however, any available interior trim color may be ordered unless otherwise noted. This two-tone scheme includes color-coordinated striping at the belt styling crease line.

Color Code 1



Color Code 2

KEY: —NOT AVAILABLE

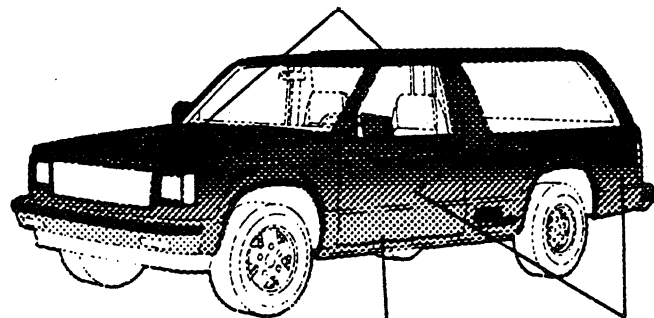
EXTERIOR COLORS		STRIPE COLORS	INTERIOR COLORS			
COLOR 1	COLOR 2		Blue ¹	Carmine ¹	Charcoal	Saddle
12 Frost White	28 Galaxy Blue Met.	Silver	•			
	67 Nevada Gold Met.	Brown				•
	72 Apple Red	Silver		•		
19 Midnight Black	67 Nevada Gold Met.	Brown			•	•
	72 Apple Red	Silver		•		
	17 Silver Met.	Red		•	•	
24 Aspen Blue Met.	28 Galaxy Blue Met.	Silver	•			
	17 Silver Met.	Blue	•		•	
28 Galaxy Blue Met.	17 Silver Met.	Blue	•		•	
	12 Frost White	Blue	•			
37 Wheat	19 Midnight Black	Gold			•	•
	28 Galaxy Blue Met.	Blue	•			
40 Woodlands Brown Met.	67 Nevada Gold Met.	Brown				•
44 Emerald Met.	17 Silver Met.	Blue			•	
67 Nevada Gold Met.	12 Frost White	Gold				•
	19 Midnight Black	Gold			•	•
	19 Midnight Black	Silver			•	—
72 Apple Red	19 Midnight Black	Red	—	•	—	—
	17 Silver Met.	Red		•	•	
	17 Silver Met.	Red		•	•	
90 Steel Gray Met.	19 Midnight Black	Red		•	•	
	17 Silver Met.	Red		•	•	

¹ Not available in Leather or Deluxe Cloth interior trim.

**HIGH COUNTRY
TIMBERLINE
PACKAGE
(YH9)**

The High Country/Timberline package is available for 4x4 models only, and includes many sporty extras (see Option Selection section for details). This package includes graduated decal striping beginning at the beltline; it requires ordering the Sport/Gypsy or Tahoe/Sierra Classic trim levels. Bumpers match the code 2 color. The following exterior color combination is the only one available.

Color Code 1



Decal Striping

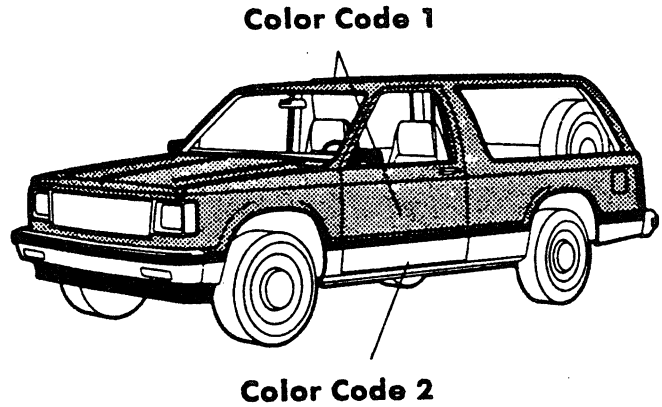
Color Code 2

EXTERIOR COLORS		STRIPE COLORS	INTERIOR COLORS	
COLOR 1	COLOR 2		Saddle ²	
19 Midnight Black	67 Nevada Gold Met.	Gold and Black	•	

² Deluxe Cloth or Leather with Sport/Gypsy interior trim; Special Custom Cloth or Leather with Tahoe/Sierra Classic interior trim.

CONVENTIONAL TWO-TONE (ZY2)

Conventional two-tone (ZY2) paint is standard with YC3 Sport/Gypsy trim and optional with other trim levels. It includes B84 body side and wheel opening moldings without the Sport/Gypsy interior trim. Color code 1 is applied to the areas above the moldings, and color code 2 is applied to the areas below the moldings. The following combinations are those recommended by Chevrolet/GMC. The only available color code 1/color code 2 exterior color combinations are those shown below, however, any available interior trim color may be ordered with one of these exterior color combinations unless otherwise noted.



KEY: —NOT AVAILABLE

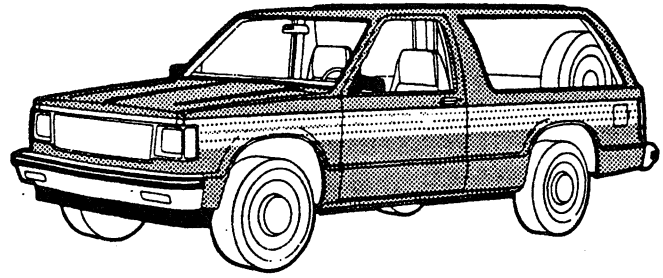
EXTERIOR COLORS		STRIPE COLORS	INTERIOR COLORS			
COLOR 1	COLOR 2		Blue ¹	Carmin ¹	Charcoal	Saddle
12 Frost White	28 Galaxy Blue Met.	—	•			
	67 Nevada Gold Met.	—				•
	72 Apple Red	—		•	•	
19 Midnight Black	67 Nevada Gold Met.	—			•	•
	72 Apple Red	—		•		
	17 Silver Met.	—		•	•	
24 Aspen Blue Met.	28 Galaxy Blue Met.	—	•			
	17 Silver Met.	—	•		•	
28 Galaxy Blue Met.	17 Silver Met.	—	•		•	
	12 Frost White	—	•			
37 Wheat	19 Midnight Black	—			•	•
	28 Galaxy Blue Met.	—	•			
40 Woodlands Brown Met.	67 Nevada Gold Met.	—				•
44 Emerald Met.	17 Silver Met.	—			•	
67 Nevada Gold Met.	12 Frost White	—			•	•
	19 Midnight Black	—			•	•
72 Apple Red	19 Midnight Black	—		•	•	
	17 Silver Met.	—		•	•	
90 Steel Gray Met.	19 Midnight Black	—		•	•	
	17 Silver Met.	—		•	•	

¹ Not available in Leather or Deluxe Cloth interior trim.

COLOR COMBINATIONS

SUNSHINE STRIPING

(D90) WITH SOLID COLOR (ZY1) PAINT



Sunshine striping (D90) is available with ZY1 Solid paint (top chart) or ZY3 Special two-tone paint (bottom chart). Sunshine striping consists of 4 bold stripes along the full length of the truck and across the tailgate. The stripes vary in color density; the top stripe is completely opaque and each of the three remaining stripes is less opaque than the one above it, allowing the exterior paint color to show through more and more in each succeeding stripe until the bottom stripe actually has just a hint of color in it. The following combinations are those recommended by Chevrolet/GMC, however, any interior trim color may be ordered unless otherwise noted.

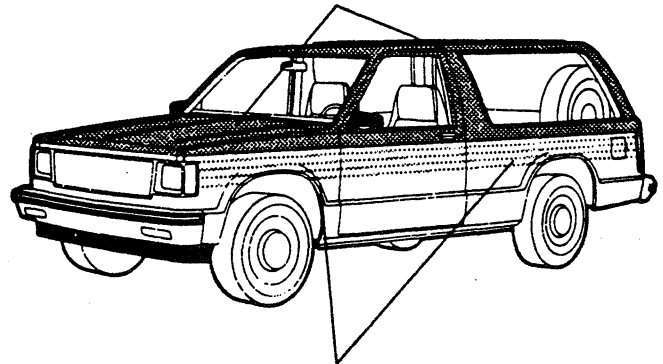
KEY: —NOT AVAILABLE

EXTERIOR COLORS		STRIPE COLORS	INTERIOR COLORS			
COLOR 1	COLOR 2	D90	Blue ¹	Carmine ¹	Charcoal	Saddle
12 Frost White	—	Black 19A	•	•	•	•
	—	Silver 17A	•	•	•	—
	—	Gray 90A	•	•	•	—
19 Midnight Black	—	Gold 67A	—	—	•	•
	—	Silver 17A	—	•	•	•
24 Aspen Blue Met.	—	Silver 17A	•	•	•	•
28 Galaxy Blue Met.	—	Silver 17A	•	•	•	•
37 Wheat	—	Black 19A	—	—	•	•
	—	Gold 67A	—	—	•	•
40 Woodlands Brown Met.	—	Gold 67A	—	—	•	•
44 Emerald Met.	—	Silver 17A	—	—	•	—
	—	Gold 67A	—	—	•	•
67 Nevada Gold Met.	—	Black 19A	—	•	•	•
72 Apple Red	—	Black 19A	—	•	•	•
	—	Silver 17A	—	•	•	•
	—	White 12A	—	•	•	•
90 Steel Gray Met.	—	Silver 17A	—	•	•	•

¹ Not available in Leather or Deluxe Cloth interior trim.

SUNSHINE STRIPING

(D90) WITH SPECIAL TWO-TONE (ZY3) PAINT



The following chart shows ZY3 Special Two-Tone paint combinations available with D90 Sunshine Striping. The only available color code 1/color code 2 exterior color combinations are those shown below, however, any available interior trim color may be ordered unless otherwise noted.

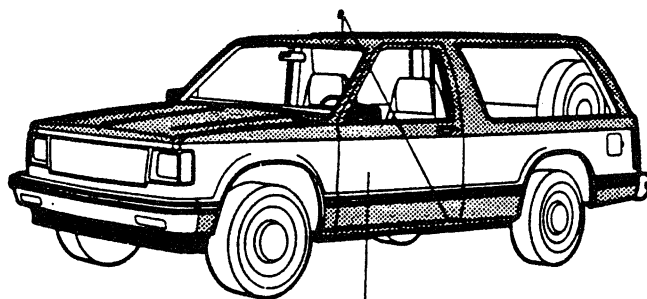
KEY:—NOT AVAILABLE

EXTERIOR COLORS		STRIPE COLORS	INTERIOR COLORS			
COLOR 1	COLOR 2	D90	Blue ¹	Carmine ¹	Charcoal	Saddle
12 Frost White	28 Galaxy Blue Met.	White 12A	•	—	—	—
	72 Apple Red	White 12A	—	•	•	—
	67 Nevada Gold Met.	White 12A	—	—	—	•
19 Midnight Black	67 Nevada Gold Met.	Black 19A	—	—	•	•
	72 Apple Red	Black 19A	—	•	—	—
	17 Silver Met.	Black 19A	—	•	•	•
67 Nevada Gold Met.	19 Midnight Black	Gold 67A	—	—	•	•
90 Steel Gray Met.	19 Midnight Black	Gray 90A	—	•	•	—
	17 Silver Met.	Gray 90A	—	•	•	—

¹ Not available in Leather or Deluxe Cloth interior trim.

DELUXE TWO-TONE (ZY4)

Deluxe two-tone (ZY4) paint is available on YC1 S-10/T-10/Sierra and YC2 Tahoe/Sierra Classic models. It includes B84 body side moldings and bright wheel opening moldings. The areas above the belt styling crease line and below the moldings are painted color code 1. The areas between the line and the moldings are painted color code 2. The following combinations are those recommended by Chevrolet/GMC. The only available color code 1/color code 2 exterior color combinations are those shown below, however, any available interior trim color may be ordered with one of these exterior color combinations unless otherwise noted.



Color Code 2

KEY: —NOT AVAILABLE

EXTERIOR COLORS		STRIPE COLORS	INTERIOR COLORS			
COLOR 1	COLOR 2		Blue ¹	Carmine ¹	Charcoal	Saddle
12 Frost White	28 Galaxy Blue Met.	—	•			
	67 Nevada Gold Met.	—				•
	72 Apple Red	—		•	•	
19 Midnight Black	67 Nevada Gold Met.	—			•	•
	72 Apple Red	—		•		
	17 Silver Met.	—		•	•	
24 Aspen Blue Met.	28 Galaxy Blue Met.	—	•			
	17 Silver Met.	—	•		•	
28 Galaxy Blue Met.	17 Silver Met.	—	•		•	
	12 Frost White	—	•			
37 Wheat	19 Midnight Black	—			•	•
	28 Galaxy Blue Met.	—	•			
40 Woodlands Brown Met.	67 Nevada Gold Met.	—				•
44 Emerald Met.	17 Silver Met.	—			•	
67 Nevada Gold Met.	12 Frost White	—				•
	19 Midnight Black	—			•	•
	19 Midnight Black	—		—	•	—
72 Apple Red	19 Midnight Black	—	—	•	—	—
	19 Midnight Black	—	—	•	—	—
	17 Silver Met.	—		•	•	
90 Steel Gray Met.	19 Midnight Black	—		•	•	
	17 Silver Met.	—		•	•	

¹ Not available in Leather interior trim.