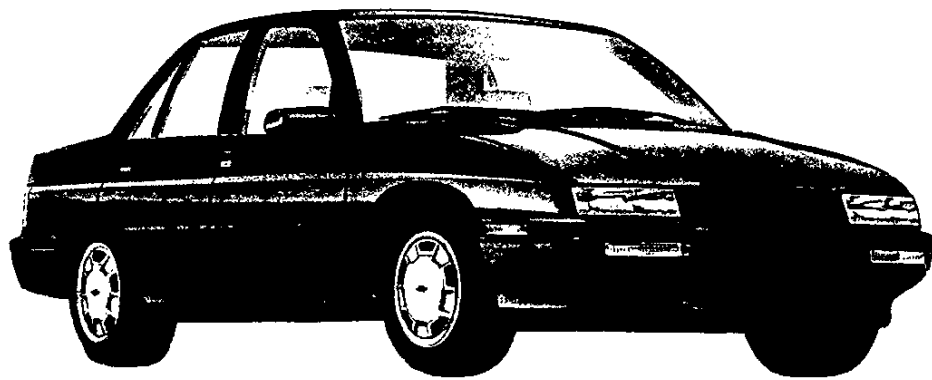


*1989 CHEVROLET
CORSICA*



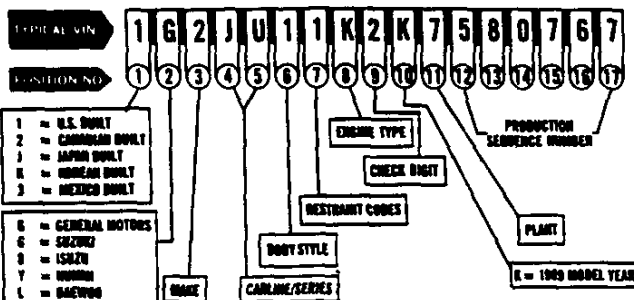
*RESTORATION
PACKAGE*



CUSTOMER
Sales & Service

(Revised) 11/88

1989 PASSENGER CAR VIN SYSTEM



General Motors

Passenger Car 1989

VIN System

3 MAKE

1 - CHEVROLET	3 - OLDSMOBILE	6 - CADILLAC
2 - PONTIAC	4 - BUICK	7 - GM OF CANADA

4 5 CARLINE SERIES

CHEVROLET	OLDSMOBILE
A/V - CELEBRITY	C/E - 98 REGENCY
B/A - CAPRICE	E/V - TORONADO TROFED
B/B - CAPRICE CLASSIC	E/Z - TORONADO
B/V - CAPRICE BROUGHAM	R/V - DELTA 88 ROYALE
F/P - CADILLAC SPORT	R/W - DELTA 88 ROYALE
F/R - COUPE AND CONV	R/X - BRIDGEMAN
G/C - CAMBER	R/Y - CUTLASS CALAIS S
H/F - CAMBER 224 AND	R/Z - CUTLASS CALAIS
CONVERTIBLE	INTERNATIONAL SERIES
L/T - CORSICA	N/L - CUTLASS CALAIS
L/V - BERETTA	N/T - CUTLASS CALAIS SL
L/W - BERETTA GT	N/W - CUTLASS SUPREME
L/Z - CORSICA LTZ	N/X - CUTLASS SUPREME
M/B - GEO METRO LH	INTERNATIONAL SERIES
(FORMER C/C)	W/S - CUTLASS SUPREME SL
M/C - GEO METRO	
M/T - SPORT	
M/V - GEO SPECTRUM COUPE	A/R - CENTURY CUSTOM
M/W - GEO SPECTRUM SEDAN	A/L - CENTURY LIMITED AND
M/X - GEO PRizm	ESTRÉE WAGON
Y/H - CORVETTE	B/R - LE SABRE ESTRÉE
Y/Z - CORVETTE ZR1	WAGON
	B/V - ELECTRA ESTRÉE
	WAGON
	C/P - ELECTRA I-TYPE
	C/R - ELECTRA PARK
	AVERAGE ULTRA
	C/W - ELECTRA PARK AVENUE
	C/X - ELECTRA LIMITED
	C/Y - REGATA
	E/Z - RIVIERA
	H/P - LE SABRE CUSTOM
	H/R - LE SABRE LIMITED
	H/S - SKYLARK
	H/V - SKYLARK CUSTOM (4-DR)
	H/W - SKYLARK LIMITED (4-DR)
	H/X - SKYLARK CUSTOM (2-DR)
	H/Y - SKYLARK LIMITED (2-DR)
	H/Z - REGAL CUSTOM
	M/V - REGAL LIMITED
	CADILLAC
	C/B - FLEETWOOD
	C/D - DEVILLE
	C/E - FLEETWOOD CITY
	SPECIAL
	B/V - BROUGHAM
	E/L - ELDOorado
	H/S - SEVILLE
	V/R - ALLANTE
	GM OF CANADA
	L/T - TEMPEST
	M/B - FIREFLY
	T/B - OPTIMA LS
	T/R - OPTIMA GLS
	T/S - OPTIMA GS
	T/X - OPTIMA

6 BODY STYLE

1 - TWO-DOOR COUPE/SEDAN (GM STYLES: 11, 27, 37, 47, 57, 97)
2 - TWO-DOOR HATCHBACK/LIFTBACK (GM STYLES: 07, 08, 77, 87)
3 - TWO-DOOR CONVERTIBLE (GM STYLE: 67)
5 - FOUR-DOOR SEDAN (GM STYLES: 19, 69)
6 - FOUR-DOOR HATCHBACK/LIFTBACK (GM STYLE: 68)
8 - FOUR-DOOR STATION WAGON (GM STYLE: 25)

7 RESTRAINT CODES

1 - MANUAL BELTS
3 - MANUAL BELTS WITH/OUT INFLATABLE RESTRAINT SYSTEM
4 - AUTOMATIC BELTS

8 ENGINE TYPE

CODE	DISP	CYL	CARL	ENGINE	PRODUCTION
A	2.3	L4	F1	2.3	U
C	2.8	V6	F1	2.3, 4	U
D	2.3	L4	F1	2.3, 0	U
E	5.0	V8	F1	1.2	U/C
F	5.0	V8	F1	1.2	U
J	5.7	V8	F1	1	U
K	2.0	L4	F1	2.7	B
M	2.0	L4	F1	2.7	B
N	3.3	V6	F1	3.4	U
R	2.5	L4	F1	1.2, 3.4	U
S	2.8	V6	F1	1.2	M
T	3.1	V6	F1	2.3, 0	M, C
W	2.5	L4	F1	2.3, 0	U
X	3.1	V6	F1	2	U
Y	2.8	V6	F1	1.2, 3.4, 7	U/C, M
Z	5.0	V8	4	1.2, 3.4, 6	U
1	4.3	V6	F1	1	U
2	2.0	L4	F1	1.6, 7	U
3	1.0	L3	F1	7	U
4	1.6	L4	F1	6	U
5	1.6	L4	F1	1	U
6	1.6	L4	F1	2.7	N
7	1.0	L3	F1	1.7	U
8	1.6	L4	F1	1	U
9	1.5	L4	2	1.7	U
7	3.8	V6	F1	2	U
7	5.7	V8	F1	1	U/C
8	5.7	V8	F1	1.2	U
8	4.5	V6	F1	6	U
9	5.0	V8	4	6	U

*LEGEND:
U - U.S. K - KOREA
C - CANADA J - JAPAN
M - MEXICO B - BRAZIL

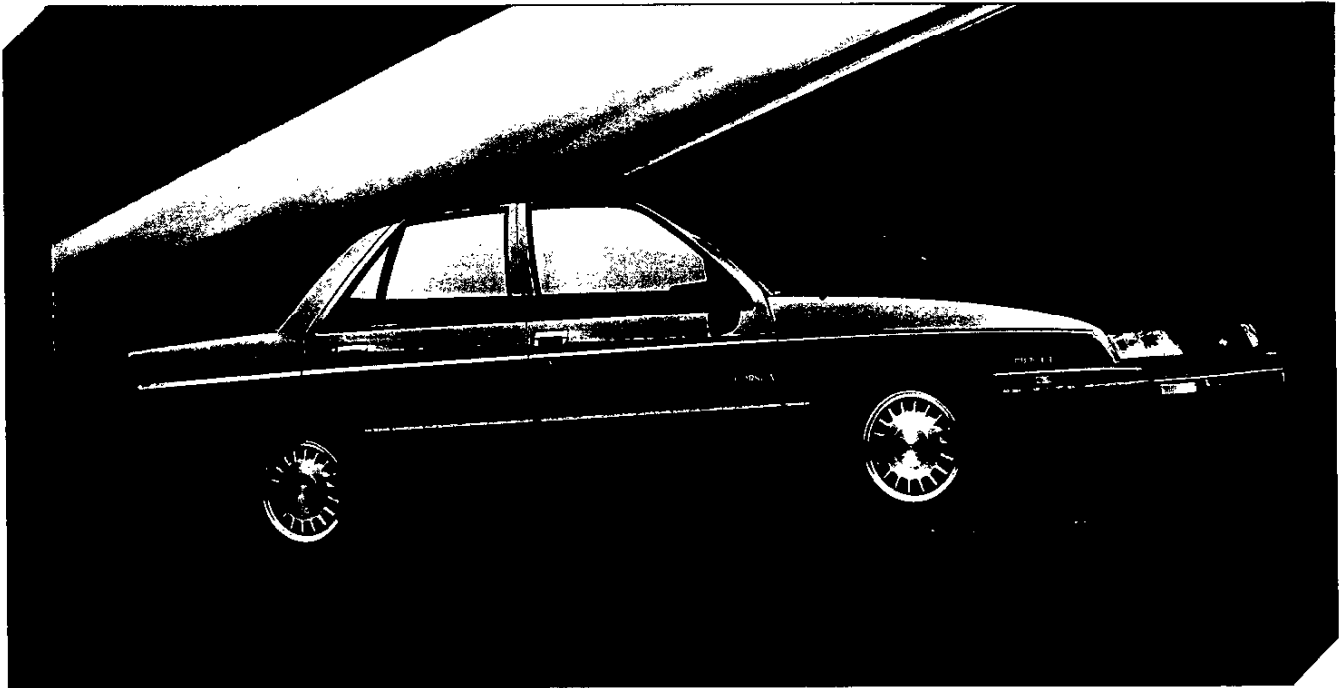
11 PLANT

A - LANSING	CA - BURLINGAME	MA - FRANKFORD	NY - RABBIT POINT	NY - PONTIAC (18)	OH - BOWLING GREEN	RT - NEW FLYC	TX - LONDON
B - BURLINGAME (18)	MD - WHITEHALL	MI - WARREN	VA - PONTIAC (18)	OH - OSWEGO #2	OH - OKLAHOMA CITY	OH - LORAIN	OH - LORAIN
C - LANSING	MO - LEEDS	MO - WILLOW RUN	MI - TOLSON	PA - STE. THERESE	PA - FUSARDA	PA - DETROIT (18)	LA - SHREVEPORT (18)
D - DONNOLLE	NY - ROSAP	NY - AMBA	CA - FARMERS	TX - AMARILLO	TX - OSWEGO #1	OH -	OH -
E - LINDEN	MI - VAN DYKE	CA - FARMERS	TX - FARMERS	TX - FARMERS	TX - FARMERS	TX - FARMERS	TX - FARMERS
F - PONTIAC (18)	MI - LANSING	MI - Y. WILMINGTON	TX - FARMERS	TX - FARMERS	TX - FARMERS	TX - FARMERS	TX - FARMERS
G - ROME	MI - PONTIAC	MI - Z. FORD	TX - FARMERS	TX - FARMERS	TX - FARMERS	TX - FARMERS	TX - FARMERS
H - ROME	MI - BURLINGAME	TX - FORD (18)	TX - FARMERS	TX - FARMERS	TX - FARMERS	TX - FARMERS	TX - FARMERS
I - FLYING SAUCE	MI - S. GARDEN	MI -	TX - FARMERS	TX - FARMERS	TX - FARMERS	TX - FARMERS	TX - FARMERS

The information shown is correct as time of printing, but may be changed during model year.

'89 CORSIKA

CORSICA	MODEL NUMBER	PASSENGER CAPACITY
4-Door Notchback Sedan	1LT69*	Sedans
4-Door Hatchback Sedan	1LT68* Five
4-Door LTZ Notchback Sedan	1LZ69	*Available with RPO Z11 LT equipment.



Corsika 4-Door Sedan.

NEW FEATURES

- New 4-Door Hatchback Sedan with opening rear hatch, folding rear seat-back, package tray that lifts out for loading ease, retracting roller-type cargo screen
- Corsika LTZ Notchback Sedan model debuts with gloss black "block-out" grille and cooling baffle, gloss black dual sport mirrors (LH remote), gloss black door frames, black-outline red LTZ nameplate letters; deck lid carrier with center high-mounted stop lamp; 15" aluminum wheels with P205/60R-15 Eagle GT+4 performance tires; Custom interior trim with LTZ nameplates; 2.8 Liter V6 with Multi-Port Fuel Injection (MFI) and sport exhaust; gage package with tachometer, floor console, auxiliary lighting with overhead console, 60/40 split-folding rear seat-back; FE3 Special Sport Suspension
- Corsika standard tires now P185/75R-14 all-season steel-belted radials
- 14" steel wheels with new full wheel covers
- Headlamp and wiper/washer switches redesigned for greater convenience
- Automatic front seat belt system
- Front seat-back panels cloth trimmed
- Radio delete (RPO UL5) available only with Base model packages

STANDARD FEATURES

- Flush halogen headlamps
- Dual sport mirrors (LH remote)
- AM/FM stereo radio with Seek and Scan and digital clock*; extended range rear speakers
- Power front disc/rear drum brakes and power rack-and-pinion steering

*May be deleted for credit from Base model packages only.

EQUIPMENT AVAILABILITY

	<i>Corsika Notchback Sedan</i>	<i>Corsika LTZ Notchback Sedan</i>	<i>Corsika Hatchback Sedan</i>
Charcoal grille	S*	NA	S*
Gloss black "blocked-out" grille panel	NA	S	NA
Bright-accented charcoal body side moldings and upper bumper fascias	S*	NA	S*
Red-accented black body side moldings and upper bumper fascias	NA*	S	NA*
Depressed-park windshield wipers with wet-arm washers	S	S	S
Semi-flush side window glass	S	S	S
Charcoal dual sport mirrors (LH remote)	S*	NA	S*
Gloss black dual sport mirrors (LH remote)	NA*	S	NA*
Gloss black side window trim with red accent striping	NA*	S	NA*
Fingertip-control instrument panel cluster pods	S	S	S
Side window defoggers	S	S	S
Automatic front restraints and 3-point rear outboard position shoulder belts included in safety belt system	S	S	S
Bright door handles and locks	S*	NA	S*
Black door handles and locks	NA*	S	NA*
4-way manual driver's seat adjuster	S	NA	S
4-way manual driver's and passenger's seat adjusters	O†	S	O†
Lift-out rear package tray	NA	NA	S
Retracting roller cargo screen	NA	NA	S
Full gage instrumentation including tachometer and trip odometer	O	S	O
Soft ride suspension	S	NA	S
FE3 Special Sport Suspension	NA	S	NA

S—Standard O—Optional at Extra Cost NA—Not Available
†Included with optional Custom trim (RPO B18).

*Except with LT equipment; see Exterior Decor.

Refer to Passenger Car Order Guide for option availability and application.

O R D E R I N G I N F O R M A T I O N

CORSICA OPTIONS

- ▲ STANDARD
- INCLUDED IN OPTION PACKAGE
- INDIVIDUAL OPTION AVAILABILITY

NOTE: NOT TO BE USED FOR ORDERING. REFER TO ORDER GUIDE FOR CURRENT USAGE AND AVAILABILITY.

PACKAGED OPTIONS (Not available individually unless indicated.)

	CORSICA HATCH/NOTCH SEDANS			CORSICA LT HATCH/NOTCH SEDANS			CORSICA LTZ NOTCH SEDAN	
	PKG. 1	PKG. 2	PKG. 3	PKG. 1	PKG. 2	PKG. 3	PKG. 1	PKG. 2
Auxiliary Lighting	■	■	■	■	■	■	▲	▲
Tinted Glass	■	■	■	■	■	■	■	■
Floor Mats, Front/Rear Color-Keyed Carpeted	■	■	■	■	■	■	■	■
Heavy-Duty Battery	■	■	■	■	■	■	■	■
Air Conditioning	●	■	■	●	■	■	▲	▲
Comfortilt Steering Wheel		■	■		■	■	■	■
Intermittent Wiper System	●	■	■	●	■	■	■	■
Electronic Speed Control		■	■		■	■	■	■
Power Door Lock System	●	●	■	●	●	■	●	■
Power Windows			■			■		■
Power Trunk Opener			■			■		■
Gage Package with Tachometer	●	●	●	●	■	■	▲	▲
TIRES/WHEEL TRIM								
P185/75R-14 Whitewall Tires	●	●	●					
P195/70R-14 Black-Lettered Tires	●	●	●	▲	▲	▲		
14" Styled Steel Wheels (Req. P195/70R-14 Tires)	●	●	●	▲	▲	▲		
14" Aluminum Wheels (Req. P195/70R-14 Tires)	●	●	●	●	●	●		
CLIMATE CONTROL								
Electric Rear Window Defogger	●	●	●	●	●	●	●	●
Engine Block Heater	●	●	●	●	●	●	●	●
RADIO EQUIPMENT								
AM/FM Stereo with Seek and Scan, Cassette, ERS* and Digital Clock	●	●	■	●	●	■	■	■
AM Stereo*/FM Stereo with Seek and Scan, Graphic Equalizer, Cassette, ERS* and Digital Clock	●	●	●	●	●	●	●	●
ADDITIONAL INDIVIDUAL OPTIONS								
Console	●	●	●	●	●	●	▲	▲
Front License Plate Bracket	●	●	●	●	●	●	●	●
Custom Two-Tone Paint	●	●	●					
Pin Striping	●	●	●					
Sport Suspension	●	●	●	▲	▲	▲	▲	▲
Deck Lid Carrier (Notchback Sedans only)	●	●	●	●	●	●	▲	▲

*ERS—Extended Range Sound System.

Receives C-Quam AM stereo broadcasts. Most AM stereo stations across the country broadcast in C-Quam, but some do not. Check with your local stations for compatibility in your area. C-Quam is a registered trademark of the Motorola Company.

SEAT TRIMS & COLORS

CORSICA CLOTH SEATS



Standard cloth seat trim available in Blue, Medium Brown, Gray or Maroon.



Standard cloth reclining bucket seats with adjustable head restraints and 4-way mechanical driver's seat adjuster.

CORSICA LTZ AND CL CUSTOM CLOTH SEAT TRIM



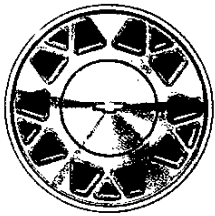
Optional CL Custom Cloth seat trim available in Blue, Medium Brown, Gray or Maroon. (Included with Corsica LTZ.)



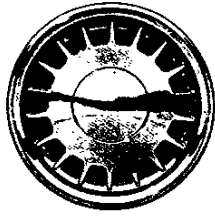
Optional CL Custom Cloth reclining bucket seats with adjustable head restraints and 4-way mechanical seat adjusters. (Included with Corsica LTZ.)

Refer to Passenger Car Order Guide for option availability and application.

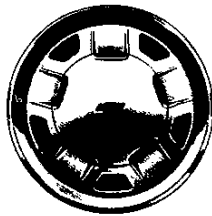
WHEEL TRIM



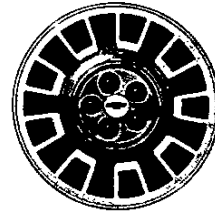
Standard 14" Wheel Covers.



Optional (Corsica and LT) 14" x 6" Aluminum Wheels (RPO PD8) with Locking Wheel Nuts.

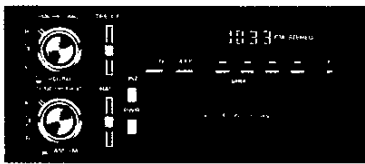


Standard LT 14" x 6" Styled Steel Wheels with Trim Rings.



Standard LTZ 15" x 6" Styled Steel Wheels.

RADIOS



Standard electronically tuned AM/FM stereo radio with Seek and Scan and digital clock*, dual front and extended range rear speakers.



Optional electronically tuned AM/FM stereo radio with Seek and Scan, dual front and dual extended range rear speakers, cassette and digital clock (RPO UM6, requires C60 air conditioning).



Optional electronically tuned AM stereo/FM stereo radio with Seek and Scan, dual front and dual extended range rear speakers, graphic equalizer, cassette and digital clock (RPO UX1, requires C60 air conditioning).

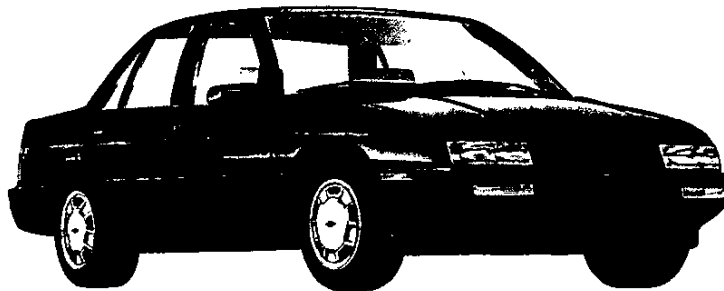
†Receives C-Quam® AM stereo broadcasts. Most AM stereo stations across the country broadcast in C-Quam but some do not. Check with your local station for compatibility in your area. C-Quam is a registered trademark of the Motorola Company.

*May be deleted for credit from Base model packages only

EXTERIOR DECOR

CORSICA LT PACKAGE (RPO Z11)

Includes black grille, black body side moldings and upper bumper fascias with red insert stripes, black dual sport mirrors (LH remote), black door handles and locks, black side window trim with red center panel accent striping, red and black exterior nameplates, (Corsica LT on deck), P195/75R-14 Touring all-season steel-belted radials, 14" styled steel wheels and LT interior emblems. Also includes deluxe steering wheel and FE2 Sport Suspension. Limited exterior color availability.



All illustrations and specifications in this brochure are based on the latest product information available at the time of publication approval. The right is reserved to make changes at any time, without notice, in colors, materials, specifications and models, and also to discontinue models. Chevrolet Motor Division, General Motors Corporation, Warren, Michigan 48090.



Refer to Passenger Car Order Guide for option availability and application.

CHEVROLET SPECIFICATIONS — 1989 CORSICA

MODELS

PASSENGERS

Corsica 4-Door Notchback Sedan (1LT69*)	5
Corsica LTZ 4-Door Notchback Sedan (1LZ69)	5
Corsica 4-Door Hatchback Sedan (1LT68*)	5

*Available with Z11 LT Option Package

DIMENSIONS (inches)

EXTERIOR

Wheelbase	103.4
Length (overall)	183.4
Width (overall)	68.2
Height (overall)	56.2

INTERIOR

Head Room-Front/Rear	38.1/37.4
Leg Room-Front/Rear	43.4/35.0
Hip Room-Front/Rear	50.9/51.2
Shoulder Room-Front/Rear	55.4/55.6

LUGGAGE COMPARTMENT CAPACITY (cu. ft.)

Usable Luggage Capacity	Notchback 13.5
Cargo Volume	
with Rear Seat Down	Hatchback 39.1
with Rear Seat Up	Hatchback 23.6

RATED FUEL TANK CAPACITY (gallons)

POWER TEAMS

STANDARD ENGINE

RPO LL8, 2.0 Liter (121 cu. in.) L4 with Electronic Fuel Injection (EFI) (NA w/LTZ)

OPTIONAL ENGINE

RPO LB6, 2.8 Liter (173 cu. in.) V6 with Multi-Port Fuel Injection (MPI) (Included w/LTZ)

STANDARD TRANSMISSION

5-Speed Manual with Overdrive

OPTIONAL TRANSMISSION

3-Speed Automatic

STANDARD EQUIPMENT SUMMARY

Composite Halogen Headlamps
 5-MPH Bumpers
 Charcoal Body Side Moldings with Narrow Bright Insert
 Charcoal Facia Rub Strips with Narrow Bright Inserts
 Charcoal Grille, Window Reveal and Door Moldings
 14" Steel Wheels with New Full Covers (Base Corsica)
 P185/75 R14 All-Season Steel-Belted Radial Tires (Base Corsica)
 Passive Front Safety Belt System; Rear Seat Outer Position Shoulder Belts, Lap Belt for Rear Center Position
 Electric Speedometer
 Snap-Up Sunshade (Map Strap on Driver's)
 Open Instrument Panel Storage Compartment on Left Fingertip Controls in Instrument Panel Cluster Pods
 AM/FM Stereo Radio with Seek and Scan and Digital Clock (May be Deleted for Credit)
 Hatchback Sedan Interior Includes Sliding Package Tray, Window-Shade Type Package Screen
 Hood Insulator
 Power Front Disc/Rear Drum Brake System
 Power Rack and Pinion Steering

SEAT STYLES

STANDARD SEATS

Corsica - Cloth Reclining Bucket Seats with Adjustable Head Restraints and 4-Way Mechanical Driver's Seat Adjuster; Full Folding Rear Seat with Hatchback
 Corsica LTZ - Custom Cloth Reclining Bucket Seats with Adjustable Head Restraints and 4-Way Driver's and Passenger's Seat Adjusters; 60/40 Split Folding Rear Seat

OPTIONAL SEATS

Corsica - Custom Cloth Reclining Bucket Seats with Adjustable Head Restraints and 4-Way Driver's and Passenger's Seat Adjusters; 60/40 Split Folding Rear Seat

CORSICA LTZ

COLOR AND TRIM SELECTION

PLEASE NOTE: The Exterior Paint and Interior Trim Combinations Shown Below are the Only Combinations that are Available.

Interior Trim Color		Blue	Med Brown	Maroon	Gray
MODEL	SEAT TYPE				
1LZ69	Custom Cloth Bucket (CL)	FDD2	FEE2	FFF2	FQQ2

SOLID PAINT APPLICATION

Exterior Paint Color	Color Code 1	Color Code 2	Blue	Med Brown	Maroon	Gray
Black (Met)	14	14			•	•
Blue, Med (Met)	27	27	•			
Gray, Med (Met)	87	87			•	•
Maroon (Met)	72	72		•	•	•
White	40	40	•	•	•	•

POWER TEAMS

ENGINE OPTION CONDITION	FINAL DRIVE RATIO	
	3.18	3.61
WITH NA5 STANDARD EMISSIONS		
LB6 MM5	—	Std
MX1	Std	—
WITH YF5 CALIFORNIA EMISSIONS		
LB6 MM5	—	Std
MX1	Std	—

13,250.00 **Model 1LZ69**

PREFERRED VEHICLE

MUST ORDER ONE GROUP — NO DELETIONS ALLOWED

534.00 Preferred Equipment Group 1	LZA1	LZA2
(-800.00) Preferred Equipment Group 1 Savings		
Battery, Heavy-Duty	x	x
Floor Covering: Carpeted Mats, Color-Keyed Front and Rear	x	x
Glass, Tinted	x	x
Speed Control: Electronic, with Resume Speed	x	x
Steering Wheel, Comfortilt	x	x
Windshield Wiper System, Intermittent	x	x
1,186.00 Preferred Equipment Group 2		
(-1,200.00) Preferred Equipment Group 2 Savings		
Electronically Tuned AM/FM Stereo Radio w/Seek-Scan, Stereo Cassette Tape and Digital Clock w/Extended Range Sound System		x
Power Door Lock System		x
Power Trunk Opener		x
Power Windows		x

Base Vehicles may be ordered by specifying Preferred Equipment Group Code LZAB (Incls LH Remote, RH Manual Sport Mirrors, 5-Speed Manual Trans, 2.8 Liter MFI V6 Eng, Air Conditioning, AM/FM Stereo Radio w/Seek-Scan and Digital Clock w/Extended Range Sound System, Interior and Exterior Ornamentation, Console, Sport Suspension, 15" Aluminum Wheels, P205/60R15 Black Lettered Tires, Auxiliary Lighting, Black Deck Carrier, Gage Pkg w/Tach, Body Side Moldings and Deluxe Steering Wheel).

REGIONALIZED OPTIONS

ADDITIONAL OPTIONS MAY BE ORDERED FROM THIS LISTING ONLY

ENGINE (Must Order)		RADIO EQUIPMENT
N.C. LB6 2.8 Liter MFI V6		V.P.S. --- Electronically Tuned AM/FM Stereo Radio w/Seek-Scan and Digital Clock w/Extended Range Sound System (Base)
TRANSMISSION (Must Order One)		
N.C. MM5 5-Speed Manual		V.P.S. UM6 Electronically Tuned AM/FM Stereo Radio w/Seek-Scan, Stereo Cassette Tape and Digital Clock w/Extended Range Sound System (Incl w/Group LZA2)
490.00 MX1 3-Speed Automatic		
EMISSION (Must Order One)		V.P.S. UX1 Electronically Tuned AM Stereo/FM Stereo Radio w/Seek-Scan, Stereo Cassette Tape with Search and Repeat, Graphic Equalizer and Clock w/Extended Range Sound System
N.C. NA5 Standard Emissions		
100.00 YF5 California Emissions		V.P.S. UL5 Radio Delete (Reqs Group LZAB)
TIRES		INTERIOR TRIM
N.C. --- P205/60 R15 B/L (Base)		N.C. F**2 Custom Cloth Bucket
WHEELS		ADDITIONAL OPTIONS
N.C. --- 15" Aluminum Wheel (Base)		N.C. VK3 License Plate Bracket, Front
CLIMATE CONTROL		195.00 AU3 Power Door Lock System (Incl w/Group LZA2)
20.00 K05 Heater, Engine Block		
145.00 C49 Defogger, Rear Window: Electric		

CORSICA LT

COLOR AND TRIM SELECTION

PLEASE NOTE: The Exterior Paint and Interior Trim Combinations Shown Below are the Only Combinations that are Available.

Interior Trim Color		Blue	Med Brown	Maroon	Gray
MODEL	SEAT TYPE				
1LT68/ 1LT69	Cloth Bucket	CDD2	CEE2	CFF2	CQQ2
	Custom Cloth Bucket (CL)	FDD2	FEE2	FFF2	FQQ2

SOLID PAINT APPLICATION

Exterior Paint Color	Color Code 1	Color Code 2	Blue	Med Brown	Maroon	Gray
Black (Met)	14	14			•	•
Blue, Med (Met)	27	27	•			
Gray, Med (Met)	87	87			•	•
Maroon (Met)	72	72		•	•	•
White	40	40	•	•	•	•

POWER TEAMS

ENGINE OPTION CONDITION	FINAL DRIVE RATIO		
	3.18	3.61	3.83
WITH NA5 STANDARD EMISSIONS			
LL8 MM5	—	—	Std
MX1	Std	—	—
LB6 MM5	—	Std	—
MX1	Std	—	—
WITH YF5 CALIFORNIA EMISSIONS			
LL8 MM5	—	—	Std
MX1	Std	—	—
LB6 MM5	—	Std	—
MX1	Std	—	—

10,800.00 **Model 1LT68 Corsica LT Hatchback**
 10,410.00 **Model 1LT69 Corsica LT Sedan**
 244.00 **LT Base Equipment (Preferred Equipment Group LTAB Only)**

PREFERRED VEHICLE

MUST ORDER ONE GROUP — NO DELETIONS ALLOWED

	LTA1	LTA2	LTA3
479.00 Preferred Equipment Group 1 (1LT68 Model)			
487.00 Preferred Equipment Group 1 (1LT69 Model)			
(-500.00) Preferred Equipment Group 1 Savings			
Battery, Heavy-Duty	x	x	x
Floor Covering: Carpeted Mats, Color-Keyed Front and Rear	x	x	x
Glass, Tinted	x	x	x
Lighting, Auxiliary	x	x	x
1,723.00 Preferred Equipment Group 2 (1LT68 Model)			
1,731.00 Preferred Equipment Group 2 (1LT69 Model)			
(-800.00) Preferred Equipment Group 2 Savings			
Air Conditioning		x	x
Gage Package with Tachometer		x	x
Speed Control: Electronic, with Resume Speed		x	x
Steering Wheel, Comfortilt		x	x
Windshield Wiper System, Intermittent		x	x
2,375.00 Preferred Equipment Group 3 (1LT68 Model)			
2,383.00 Preferred Equipment Group 3 (1LT69 Model)			
(-1,200.00) Preferred Equipment Group 3 Savings			
Electronically Tuned AM/FM Stereo Radio w/Seek-Scan, Stereo Cassette Tape and Digital Clock w/Extended Range Sound System			x
Power Door Lock System			x
Power Trunk Opener/Hatch Release			x
Power Windows			x

Base Vehicles may be ordered by specifying Preferred Equipment Group Code LTAB (Incls LH Remote, RH Manual Sport Mirrors, 2.0 Liter EFI L4 Eng, 5-Speed Manual Trans, AM/FM Stereo Radio w/Seek-Scan and Digital Clock w/Extended Range Sound System, Exterior Ornamentation, Body Side Moldings, Sport Suspension, Deluxe Steering Wheel, P195/70R14 Black Lettered Tires and 14" Styled Wheels).

REGIONALIZED OPTIONS

ADDITIONAL OPTIONS MAY BE ORDERED FROM THIS LISTING ONLY

	ENGINE (Must Order One)			
N.C.	LL8 2.0 Liter EFI L4	V.P.S.	UX1	Electronically Tuned AM Stereo/FM Stereo Radio w/Seek-Scan, Stereo Cassette Tape with Search and Repeat, Graphic Equalizer and Clock w/Extended Range Sound System (Reqs C60 Air)
660.00	LB6 2.8 Liter MFI V6 (Reqs C60 Air)			
	TRANSMISSION (Must Order One)			
N.C.	MM5 5-Speed Manual			
490.00	MX1 3-Speed Automatic (w/LL8 Eng Reqs UA1 Battery)	V.P.S.	UL5	Radio Delete (Reqs Group LTAB)
	EMISSION (Must Order One)			INTERIOR TRIM
N.C.	NA5 Standard Emissions	N.C.	C**2	Cloth Bucket
100.00	YF5 California Emissions	275.00	F**2	Custom Cloth Bucket (1LT68 Model)
	TIRES	425.00	F**2	Custom Cloth Bucket (1LT69 Model)
N.C.	--- P195/70 R14 B/L (Radial) (Base)			ADDITIONAL OPTIONS
	WHEELS (May Choose One)	26.00	UA1	Battery, Heavy-Duty (Incl w/Groups LTA1, LTA2 and LTA3)
N.C.	--- 14" Styled Steel Wheels (Base)	115.00	V56	Carrier, Deck Lid-Black (1LT69 Only)
159.00	PD8 14" Aluminum Wheels	60.00	D55	Console
	CLIMATE CONTROL	139.00	UB3	Gage Package w/Tachometer (Incl w/Groups LTA2 and LTA3)
750.00	C60 Air Conditioning (Incl w/Groups LTA2 and LTA3)			N.C. VK3 License Plate Bracket, Front
145.00	C49 Defogger, Rear Window: Electric	56.00	TR9	Lighting, Auxiliary (Incl w/Groups LTA1, LTA2 and LTA3) (1LT68 Model)
20.00	K05 Heater, Engine Block			64.00 TR9 Lighting, Auxiliary (Incl w/Groups LTA1, LTA2 and LTA3) (1LT69 Model)
	RADIO EQUIPMENT			195.00 AU3 Power Door Lock System (Incl w/Group LTA3)
V.P.S.	--- Electronically Tuned AM/FM Stereo Radio w/Seek-Scan and Digital Clock w/Extended Range Sound System (Base)	55.00	CD4	Windshield Wiper System, Intermittent (Incl w/Groups LTA2 and LTA3)
V.P.S.	UM6 Electronically Tuned AM/FM Stereo Radio w/Seek-Scan, Stereo Cassette Tape and Digital Clock w/Extended Range Sound System (Reqs C60 Air) (Incl w/Group LTA3)			

REVISED: 1-30-89

1989 ORDER GUIDE

CORSICA
Page 5

Prices Shown Are Manufacturer's Suggested Retail Prices (MSRP) At The Time Of Publication. These Prices Are To Be Used Only As An Aid To Inventory Management Since MSRP Figures Change Periodically. The Vehicle Price Schedule Is The Official Pricing Documentation Of Chevrolet Motor Division And Should Be Used In Discussing Vehicle Prices With Potential Buyers. The Model Prices Shown In The Order Guide Include The Destination Freight Charges.

CORSICA

COLOR AND TRIM SELECTION

PLEASE NOTE: The Exterior Paint and Interior Trim Combinations Shown Below are the Only Combinations that are Available.

Interior Trim Color	Blue	Med Brown	Maroon	Gray	
MODEL	SEAT TYPE				
1LT69/ 1LT68	Cloth Bucket	CDD2	CEE2	CFF2	COQ2
	Custom Cloth Bucket CL	FDD2	FEE2	FFF2	FQQ2

CUSTOM TWO-TONE PAINT (D84 Must be Specified in "Plus" (+) Option Section of Order Worksheet)

Exterior Paint Color	Color Code 1	Color Code 2	Blue	Med Brown	Maroon	Gray
Black (Met) & Gray, Medium (Met)	14	87			•	•
Blue, Light (Met) & Blue, Medium (Met)	22	27	•			
Maroon (Met) & Silver (Met)	72	13			•	•
Silver (Met) & Gray, Medium (Met)	13	87			•	•

SOLID PAINT APPLICATION

Exterior Paint Color	Color Code 1	Color Code 2	Blue	Med Brown	Maroon	Gray
Black (Met)	14	14			•	•
Blue, Light (Met)	22	22	•			
Blue, Medium (Met)	27	27	•			
Brown, Light (Met)	33	33		•		
Maroon (Met)	72	72			•	•
Gray, Medium (Met)	87	87			•	•
Silver (Met)	13	13	•		•	•
White	40	40	•	•	•	•

STRIPE COLORS (WITHOUT D84 CUSTOM TWO-TONE PAINT)

(Stripe Color Only When D85 Stripe is Ordered)

Exterior Paint Color	Color Code 1	Color Code 2	INTERIOR TRIM			
			Blue	Med Brown	Maroon	Gray
Black (Met)	14	14			Red	Red
Blue, Light (Met)	22	22	Silver (Met)			
Blue, Medium (Met)	27	27	Lt. Blue			
Brown, Light (Met)	33	33		Med Orange		
Maroon (Met)	72	72			Gold (Met)	Gold (Met)
Gray, Medium (Met)	87	87			Med Orange	Med Orange
Silver (Met)	13	13	Red		Red	Red
White	40	40	Red	Red	Red	Red

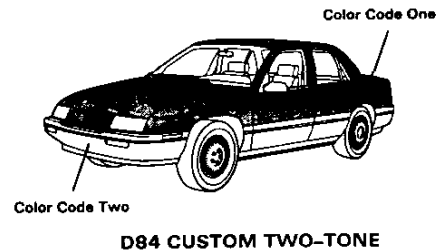
STRIPE COLORS (WITH D84 CUSTOM TWO-TONE PAINT)

(Stripe Color Only When D85 Stripe is Ordered)

Exterior Paint Color	Color Code 1	Color Code 2	INTERIOR TRIM			
			Blue	Med Brown	Maroon	Gray
Black (Met) & Gray, Medium (Met)	14	87			Red	Red
Blue, Light (Met) & Blue, Medium (Met)	22	27	Blue			
Maroon (Met) & Silver (Met)	72	13			Red	Red
Silver (Met) & Gray, Medium (Met)	13	87			Red	Red

POWER TEAMS

ENGINE OPTION CONDITION	FINAL DRIVE RATIO		
	3.18	3.61	3.83
WITH NA5 STANDARD EMISSIONS			
LL8 MM5	—	—	Std
MX1	Std	—	—
LB6 MM5	—	Std	—
MX1	Std	—	—
WITH YF5 CALIFORNIA EMISSIONS			
LL8 MM5	—	—	Std
MX1	Std	—	—
LB6 MM5	—	Std	—
MX1	Std	—	—



10,800.00 **Model 1LT68 Corsica Hatchback**
 10,410.00 **Model 1LT69 Corsica Sedan**

PREFERRED VEHICLE

MUST ORDER ONE GROUP — NO DELETIONS ALLOWED

	LBA1	LBA2	LBA3
235.00 Preferred Equipment Group 1 (1LT68 Model)			
243.00 Preferred Equipment Group 1 (1LT69 Model)			
(-500.00) Preferred Equipment Group 1 Savings			
Battery, Heavy-Duty	x	x	x
Floor Covering: Carpeted Mats, Color-Keyed Front and Rear	x	x	x
Glass, Tinted	x	x	x
Lighting, Auxiliary	x	x	x
1,340.00 Preferred Equipment Group 2 (1LT68 Model)			
1,348.00 Preferred Equipment Group 2 (1LT69 Model)			
(-800.00) Preferred Equipment Group 2 Savings			
Air Conditioning		x	x
Speed Control: Electronic, with Resume Speed		x	x
Steering Wheel, Comfortilt		x	x
Windshield Wiper System, Intermittent		x	x
1,992.00 Preferred Equipment Group 3 (1LT68 Model)			
2,000.00 Preferred Equipment Group 3 (1LT69 Model)			
(-1,200.00) Preferred Equipment Group 3 Savings			
Electronically Tuned AM/FM Stereo Radio w/Seek-Scan, Stereo Cassette Tape and Digital Clock w/Extended Range Sound System			x
Power Door Lock System			x
Power Trunk Opener/Hatch Release			x
Power Windows			x

Base Vehicles may be ordered by specifying Preferred Equipment Group Code LBAB (Incls LH Remote, RH Manual Sport Mirrors, 2.0 Liter EFI L4 Eng, 5-Speed Manual Trans and AM/FM Stereo Radio w/Seek-Scan and Digital Clock w/Extended Range Sound System).

REGIONALIZED OPTIONS

ADDITIONAL OPTIONS MAY BE ORDERED FROM THIS LISTING ONLY

ENGINE (Must Order One)					
N.C.	LL8	2.0 Liter EFI L4			Range Sound System (Reqs C60 Air) (Incl w/Group LBA3)
660.00	LB6	2.8 Liter MFI V6 (Reqs C60 Air)	V.P.S.	UX1	Electronically Tuned AM Stereo/FM Stereo Radio w/Seek-Scan, Stereo Cassette Tape with Search and Repeat, Graphic Equalizer and Clock w/Extended Range Sound System (Reqs C60 Air)
TRANSMISSION (Must Order One)					
N.C.	MM5	5-Speed Manual			
490.00	MX1	3-Speed Automatic (w/LL8 Eng Reqs UA1 Battery)			Radio Delete (Reqs Group LBAB)
EMISSION (Must Order One)					
N.C.	NA5	Standard Emissions	V.P.S.	UL5	
100.00	YF5	California Emissions			
TIRES (Must Order One)					INTERIOR TRIM
N.C.	QFE	P185/75 R14 B/L (Base)	N.C.	C**2	Cloth Bucket
68.00	QFF	P185/75 R14 W/S	275.00	F**2	Custom Cloth Bucket (1LT68 Model)
93.00	QME	P195/70 R14 B/L (Reqs PC4 or PD8 Wheels)	425.00	F**2	Custom Cloth Bucket (1LT69 Model)
WHEELS (May Choose One)					ADDITIONAL OPTIONS
N.C.	---	Full Wheel Covers (Base)	26.00	UA1	Battery, Heavy-Duty (Incl w/Groups LBA1, LBA2 and LBA3)
215.00	PD8	14" Aluminum Wheels (Reqs QME Tires)	115.00	V56	Carrier, Deck Lid-Black (1LT69 Only)
56.00	PC4	14" Styled Steel Wheels (Reqs QME Tires)	60.00	D55	Console
CLIMATE CONTROL					Gage Package w/Tachometer
20.00	K05	Heater, Engine Block	139.00	UB3	License Plate Bracket, Front
145.00	C49	Defogger, Rear Window: Electric	N.C.	VK3	Lighting, Auxiliary (Incl w/Groups LBA1, LBA2 and LBA3)
750.00	C60	Air Conditioning (Incl w/Groups LBA2 and LBA3)	56.00	TR9	Lighting, Auxiliary (Incl w/Groups LBA1, LBA2 and LBA3) (1LT69 Model)
RADIO EQUIPMENT					
V.P.S.	---	Electronically Tuned AM/FM Stereo Radio w/Seek-Scan and Digital Clock w/Extended Range Sound System (Base)	123.00	D84	Paint, Custom Two-Tone
			195.00	AU3	Power Door Lock System (Incl w/Group LBA3)
V.P.S.	UM6	Electronically Tuned AM/FM Stereo Radio w/Seek-Scan, Stereo Cassette Tape and Digital Clock w/Extended	57.00	D85	Striping, Pin
			49.00	F41	Suspension, Sport (Reqs QME Tires)
			55.00	CD4	Windshield Wiper System, Intermittent (Incl w/Groups LBA2 and LBA3)

REVISED: 1-30-89

1989 ORDER GUIDE

CORSIKA
Page 7

Prices Shown Are Manufacturer's Suggested Retail Prices (MSRP) At The Time Of Publication. These Prices Are To Be Used Only As An Aid To Inventory Management Since MSRP Figures Change Periodically. The Vehicle Price Schedule Is The Official Pricing Documentation Of Chevrolet Motor Division And Should Be Used In Discussing Vehicle Prices With Potential Buyers. The Model Prices Shown In The Order Guide Include The Destination Freight Charges.

NOTES

Prices Shown Are Manufacturer's Suggested Retail Prices (MSRP) At The Time Of Publication. These Prices Are To Be Used Only As An Aid To Inventory Management Since MSRP Figures Change Periodically. The Vehicle Price Schedule Is The Official Pricing Documentation Of Chevrolet Motor Division And Should Be Used In Discussing Vehicle Prices With Potential Buyers. The Model Prices Shown In The Order Guide Include The Destination Freight Charges.

MANUFACTURERS MOTOR VEHICLE SPECIFICATIONS

METRIC (U.S. Customary)

1989

Manufacturer	Chevrolet Motor Division General Motors Corporation	Vehicle Line	CORSICA	
Mailing Address	Chevrolet-Pontiac-Canada Group Engineering Center General Motors Corporation 30003 Van Dyke Warren, MI 48090-9060	Issued	June, 1988	Revised September, 1988

Direct questions concerning these specifications to the manufacturer listed above.

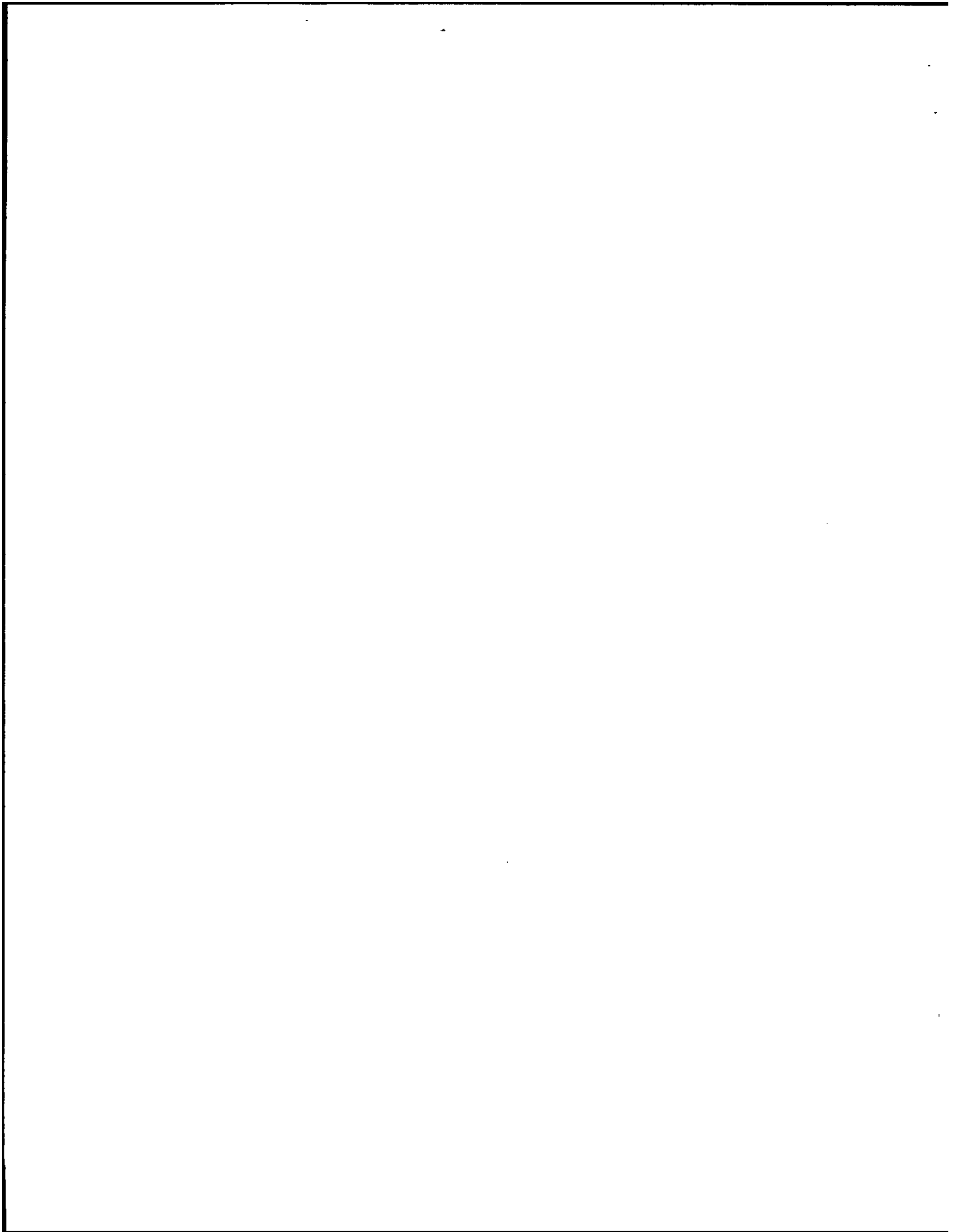
The information contained herein is prepared, distributed by, and is solely the responsibility of the vehicle manufacturing company to whose products it relates. This specification form was developed by the vehicle manufacturing companies under the auspices of the Motor Vehicle Manufacturers Association of the United States, Inc.

The General Specifications herein are those in effect at date of compilation and are subject to change without notice or incurring obligation by the manufacturer.



Motor Vehicle Manufacturers Association
of the United States, Inc.

Blank Forms Provided by Technical Affairs Division



MVMA Specifications Form
METRIC (U.S. Customary)

Vehicle Line CORSICA
 Model Year 1989 Issued 6-88 Revised (e) 9-88

Vehicle Origin

Design & development (company)	<u>Chevrolet-Pontiac-GM of Canada Engineering</u>
Where built (country)	<u>U.S.A.</u>
Authorized U.S. sales marketing representative	<u>Chevrolet Motor Division</u>

Vehicle Models

Model Description & Drive (FWD/RWD/AWD/4WD)*	Introduction Date	Make, Vehicle Models, Series, Body Type (Mfr's Model Code)	No. of Designated Seating Positions (Front/Rear)	Max. Trunk/Cargo Load—Kilograms (Pounds)
<u>CORSICA</u> 4-Door Notchback Sedan (FWD)		1LT69	5 (2/3)	
4-Door Hatchback Sedan (FWD)		1LT68	5 (2/3)	

* FWD - Front Wheel Drive RWD - Rear Wheel Drive
 AWD - All Wheel Drive 4WD - Four Wheel Drive

MVMA Specifications Form

Vehicle Line CORSICA
 Model Year 1989 Issued 6-88 Revised (e) 9-88

METRIC (U.S. Customary)

Power Teams (Indicate whether standard or optional)

SAE J1349 Net bhp (brake horsepower) and net torque corrected to 77°F/25° C and 29.61 in. Hg/100 kPa atmospheric pressure.

SERIES AVAILABILITY	ENGINE						Exhaust S/D*	TRANSMISSION/TRANSAXLE	AXLE RATIO (std. first)
	Code	Displ. Liters (in ³)	Induction (FI, CARB/BBL, etc.)	Compr. Ratio	SAE Net at RPM				
					Power kW (bhp)	Torque N·m (lb. ft.)			
Base - All States	LL8	L-4 2.0L (121 CID)	EFI +	9.0:1	67 (90) @ 5600	146 (108) @ 3200	S	Man 5-Speed 3.73 Low Base (MR3)	3.83
								Auto '125c' Avail (MD9)	3.18
Opt. - All States	LB6	V6 2.8L (173 CID)	MFI %	8.9:1	97 (130) @ 4700	217 (160) @ 3600	S	Man. 5-Spd. 3.50 Low Base (MG2)	3.61
								Auto '125c' Avail (MD9)	3.18
+ - Electronic Fuel Injection % - (2.8 Multi-Port FI)									

* Single / Dual

MVMA Specifications Form

Vehicle Line CORSICA
 Model Year 1989 Issued 6-88 Revised (•) _____

METRIC (U.S. Customary)

Engine Description/Carb.
 Engine Code

2.0 LTR L-4 (121 CID) (EFI) RPO LL8	2.8 LTR V6 (173 CID) (2.8 MPI) RPO LB6
--	---

ENGINE - GENERAL

Type & description (inline, V, angle, flat, location, front, mid, rear, transverse, longitudinal, sohc, dohc, ohv, hemi, wedge, pre-camber, etc.)	In line Front Transverse, front of engine faces right side of vehicle	
Manufacturer	Chevrolet	
No. of cylinders	4	6
Bore	89 (3.50)	89 (3.50)
Stroke	80 (3.15)	76 (2.99)
Bore spacing (C/L to C/L)	99 (3.90)	111.8 (4.40)
Cylinder block material & mass kg (lbs.) (machined)	Cast Iron/32.050 (70.7)	Cast Iron/48.2 (106.3)
Cylinder block deck height	215.55 (8.49)	224 (8.819)
Cylinder block length	443 (17.4)	435.5 (17.1)
Deck clearance (minimum) (above or below block)	0.15 (.006) below	0.15 (.006) above
Cylinder head material & mass kg (lbs.)	Aluminum 9.740 (21.5)	Aluminum 5.300 (11.7)
Cylinder head volume (cm ³)	43.3	28.0
Cylinder liner material	Not Available	
Head gasket thickness (compressed)	1.1 (.043)	1.50 (.059)
Minimum combustion chamber total volume (cm ³)	59.988 (3.66)@	59.8481 (3.6515)@
Cyl. no. system (front to rear)*	L. Bank	1-2-3-4
	R. Bank	--
Firing order	1-3-4-2	1-2-3-4-5-6 / 2.675 (5.9) Ctr
Intake manifold material & mass [kg (lbs.)]**	Aluminum Cast/3.870 (8.5)	Aluminum Cast/3.810 (8.4) Lwr
Exhaust manifold material & mass [kg (lbs.)]**	Stamped Steel/2.585 (5.7)	Cast Iron-IH 2.630 (5.8)
Fuel required unleaded, diesel, etc.	Unleaded	RH 3.670 (8.1)
Fuel antiknock index (R + M) + 2	87	
Engine mounts	Number	
	Material and type (elastomeric, hydroelastic, hydraulic damper, etc.)	
	Added isolation (sub-frame, crossmember, etc.)	
Total dressed engine mass (wt) dry***	146.8 (323.6) Auto 162.4 (358.0) Man	177.2 (390.6) Auto 191.5 (422.2) Man
Engine - Pistons		
Material & mass, g (weight, oz.) - piston only	Aluminum Alloy .350 (10.9)	Aluminum Alloy .390 (12.1)
Engine - Camshaft		
Location	In cylinder block, right side In block above crankshaft	
Material & mass kg (weight, lbs.)	Cast Iron 3.065 (6.8)	Cast Iron/3.098 (6.83)
Drive type	Chain / belt	Chain
	Width / pitch	19.3 (0.76)/9.53 (0.38)

* Rear of engine - drive takeoff. View from drive takeoff end to determine left & right side of engine.

** Finished state.

*** Dressed engine mass (weight) includes the following:

All those items necessary to make the engine a complete ready-to-run unit.

@ - Piston at TDC, spark plug and valves in place, and cylinder head torqued to specifications.

MVMA Specifications Form

Vehicle Line CORSICA
 Model Year 1989 Issued 6-88 Revised (e) _____

METRIC (U.S. Customary)

Engine Description/Carb.
 Engine Code

2.0 LTR L-4 (121 CID) RPO LL8 Electronic Fuel Injection	2.8 LTR V6 (173 CID) RPO LB6 (2.8 Multi-Port FI)
--	---

Engine - Valve System

Hydraulic lifters (std., opt., NA)	Standard	
Valves	Number intake / exhaust	4/4
	Head O.D. intake / exhaust	43.00 (1.69)/37.00 (1.46)
		6/6
		43.64 (1.72)/36.20 (1.43)

Engine - Connecting Rods

Material & mass [kg., (weight, lbs.)]*	Cast Steel, .373 (.820)	Cast Steel, .399 (0.880)
Length (axes to axes) mm		

Engine - Crankshaft

Material & mass [kg., (weight, lbs.)]*	Nod. Cast Iron/13.360(29.5)	Nod. Cast Iron/14.170(31.2)
End thrust taken by bearing (no.)	5	3
Length & number of main bearings	5	4
Seal (material, one, two piece design, etc.)	Front	Silicon, one
	Rear	Silicon, one
		Viton/one piece
		Viton/one piece

Engine - Lubrication System

Normal oil pressure [kPa (psi) at engine rpm]	435-530 (63-77) @ 1200	345-450 (50-65) @ 1200
Type oil intake (floating, stationary)	Stationary	
Oil filter system (full flow, part, other)	Full-flow	
Capacity of c/case, less filter-refill-L (qt.)	3.8 (4.0)	3.8 (4.0)

Engine - Diesel Information

Diesel engine manufacturer	Not
Glow plug, current drain at 0°F	Applicable
Injector nozzle	Type
	Opening pressure [kPa (psi)]
Pre-chamber design	
Fuel injection pump	Manufacturer
	Type
Fuel injection pump drive (belt, chain, gear)	
Supplementary vacuum source (type)	
Fuel heater (yes/no)	
Water separator, description (std., opt.)	
Turbo manufacturer	
Oil cooler-type (oil to engine coolant; oil to ambient air)	
Oil filter	

Engine - Intake System

Turbo charger - manufacturer	Not
Super charger - manufacturer	Applicable
Intercooler	

*Finished State

MVMA Specifications Form

Vehicle Line CORSICA
 Model Year 1989 Issued 6-88 Revised (e)

METRIC (U.S. Customary)

Engine Description/Carb.
 Engine Code

2.0 Liter L4 (121 CID) RPO LL8
 Electronic Fuel Injection

Engine - Cooling System

Coolant recovery system (std., opt., n.a.)		Standard	
Coolant fill location (rad., bottle)		Bottle, coolant recovery	
Radiator cap relief valve pressure (kPa (psi))		103.4 (15)	
Circulation thermostat	Type (choke, bypass)	Choke	
	Starts to open at °C (°F)	91 (195°F)	
Water pump	Type (centrifugal, other)	Centrifugal, with aluminum die cast body	
	GPM 1000 pump rpm	7.3 @ 1000 pump RPM	
	Number of pumps	One	
	Drive (V-belt, other)	V-belt	
	Bearing type	Sealed, ball-roller	
	Impeller material	Cast Iron	
	Housing material	Aluminum	
By-pass recirculation [type (inter., ext.)]		Internal	
Cooling system capacity	With heater-L.(qt.)	8.19 (8.6) Auto, 8.29 (8.8) Man	
	With air cond.-L.(qt.)	8.23 (8.7) Auto, 8.33 (8.8) Man	
	Opt. equipment [specify-L.(qt.)]	8.37 (8.8) Auto, 8.37 (8.8) Man	
Water jackets full length of cyl. (yes, no)		Yes	
Water all around cylinder (yes, no)		Yes	
Water jackets open at head face (yes, no)		No	
Radiator core	Std., A/C, HD	Standard	Air Conditioning
	Type (cross-flow, etc.)	Cross-flow	
	Construction (fin & tube mechanical, braze, etc.)	High Efficiency Radiator	
	Material, mass (kg (wgt. lbs.))	Aluminum	
	Width	499.5	659.5
	Height	382.4	382.4
	Thickness	23.5	34.0
	Fins per inch	3.5*	3.5*
Radiator end tank material		Plastic	
Fan	Std., elec., opt.	Electric	
	Number of blades & type (flex, solid, material)	Std. - 5, flex, plastic (opt. - 7, flex, plastic)	
	Diameter & projected width	Std. - 293.87 (11.57), opt. 360.0 (14.2)	
	Ratio (fan to crankshaft rev.)	Not Applicable	
	Fan cutout type	ECM controlled	
	Drive type (direct, remote)	Direct	
	RPM at idle (elec.)	2200-2400 (constant)	
	Motor rating (wattage) (elec.)	96	
	Motor switch (type & location) (elec.)	Coolant switch, engine cylinder head	
	Switch point (temp., pressure) (elec.)	110°F	
Fan shroud (material)		Plastic	

* - Distance between top of fins.

MVMA Specifications Form

Vehicle Line CORSICA
 Model Year 1989 Issued 6-88 Revised (●) _____

METRIC (U.S. Customary)

Engine Description/Carb.
 Engine Code

2.8 Liter V6 (173 CID) RPO LB6
 (2.8 Multi-Port FI)

Engine - Cooling System

Coolant recovery system (std., opt., n.a.)	Standard		
Coolant fill location (rad., bottle)	Bottle, coolant recovery		
Radiator cap relief valve pressure (kPa (psi))	103.4 (15)		
Circulation thermostat	Type (choke, bypass)	Bypass	
	Starts to open at °C (°F)	91 (195°F)	
Water pump	Type (centrifugal, other)	Centrifugal, with aluminum die cast body	
	GPM 1000 pump rpm	--	
	Number of pumps	One	
	Drive (V-belt, other)	Serpentine	
	Bearing type	Sealed, ball-roller	
	Impeller material	Cast Iron	
	Housing material	Aluminum	
By-pass recirculation (type (inter., ext.))	Internal		
Cooling system capacity	With heater-L(qt.)	10.71 (11.3) Auto, 10.75 (11.4) Man	
	With air cond.-L(qt.)	10.67 (11.3) Auto, 10.71 (11.3) Man	
	Opt. equipment (specify-L(qt.))	10.71 (11.3) Auto, 10.71 (11.3) Man	
Water jackets full length of cyl. (yes, no)	Yes		
Water all around cylinder (yes, no)	Yes		
Water jackets open at head face (yes, no)	--		
Radiator core	Std., A/C, HD	Standard	Air Conditioning
	Type (cross-flow, etc.)	Cross-flow	
	Construction (fin & tube mechanical, braze, etc.)	High Efficiency Radiator	
	Material, mass (kg (wgt. lbs.))	Aluminum	
	Width	499.5	659.5
	Height	382.4	382.4
	Thickness	23.5	34.0
	Fins per inch	3.5*	3.5*
Radiator end tank material	Plastic		
Fan	Std., elec., opt.	Electric	
	Number of blades & type (flex, solid, material)	Std. - 7, flex, plastic (opt. same - 7, flex, plastic)	
	Diameter & projected width	Std. and opt. same - 360.0 (14.2)	
	Ratio (fan to crankshaft rev.)	Not Applicable	
	Fan cutout type	ECM controlled	
	Drive type (direct, remote)	Direct	
	RPM at idle (elec.)	1800	
	Motor rating (wattage) (elec.)	140-150	
	Motor switch (type & location) (elec.)	Coolant switch, engine cylinder head	
	Switch point (temp., pressure) (elec.)	110°F	
	Fan shroud (material)	Plastic	

* - Distance between top of fins.

MVMA Specifications Form

Vehicle Line CORSICA
 Model Year 1989 Issued 6-88 Revised (e) _____

METRIC (U.S. Customary)

Engine Description/Carb.
 Engine Code

**2.0 Liter L-4 (121 CID) RPO LL8
 Electronic Fuel Injection**

Engine - Fuel System (See supplemental page for details of Fuel Injection, Supercharger, Turbocharger, etc. if used)

Induction type: carburetor, fuel injection system, etc.		Fuel Injection CCC controlled
Manufacturer		Rochester Products
<input checked="" type="checkbox"/>	Carburetor no. of barrels	None
Idle A/F mix.		
Fuel injection	Point of injection (no.)	Throttle body
	Constant, pulse, flow	Pulse
	Control (electronic, mech.)	Electronic
	System pressure (kPa (psi))	68.95-82.74 (10-12)
Idle spd. -rpm (spec. neutral or drive and propane if used)	Manual	Not Applicable
	Automatic	Not Applicable
Intake manifold heat control (exhaust or water thermostatic or fixed)		Water
Air cleaner type		Replaceable paper element single snorkel
Fuel filter (type - location)		
<input checked="" type="checkbox"/>	Type (elec. or mech.)	Electric
	Location (eng., tank)	Tank
	Pressure range (kPa (psi))	Not Applicable
<input checked="" type="checkbox"/>	Flow rate at regulated pressure (L (gal) / hr (in kPa (psi)))	

Fuel Tank

Capacity (refill L (gallons))		51.5 (13.6)
Location (describe)		Underbody - rear center
Attachment		Underbody strap
Material & Mass (kg (weight lbs))		Steel 8.732 (19.3)
Filler pipe	Location & material	R.H. rear quarter
	Connection to tank	Solid solder
Fuel line (material)		Steel
Fuel hose (material)		Rubber
Return line (material)		Steel
Vapor line (material)		Steel
Extended range tank	Opt., n.a.	Not Available
	Capacity (L (gallons))	" "
	Location & material	" "
	Attachment	" "
Auxiliary tank	Opt., n.a.	" "
	Capacity (L (gallons))	" "
	Location & material	" "
	Attachment	" "
	Selector switch or valve	" "
	Separate fill	" "

MVMA Specifications Form

Vehicle Line CORSICA
 Model Year 1989 Issued 6-88 Revised (●) _____

METRIC (U.S. Customary)

Engine Description/Carb.
 Engine Code

**2.8 Liter V6 (173 CID) RPO LB6
 (2.8 Multi-Port FI)**

Engine - Fuel System (See supplemental page for details of Fuel Injection, Supercharger, Turbocharger, etc. if used)

Induction type: carburetor, fuel injection system, etc.		Multi-Port Fuel Injection
Manufacturer		Rochester Products
<input checked="" type="checkbox"/>	Carburetor no. of barrels	None
Idle A/F mix.		Preset - no adjustment provided
Fuel injection	Point of injection (no.)	Fuel injectors at inlet ports
	Constant pulse, flow	Pulse
	Control (electronic, mech.)	Electronic
	System pressure (kPa (psi))	Not Available
Idle spd -rpm (spec neutral or drive and propane if used)	Manual	Not Applicable
	Automatic	Not Applicable
Intake manifold heat control (exhaust or water thermostatic or fixed)		Water
Air cleaner type		Replaceable paper element single
Fuel filter (type / location)		
<input checked="" type="checkbox"/>	Type (elec. or mech.)	Electric
	Location (eng., tank)	Tank
	Pressure range (kPa (psi))	Not Applicable
<input checked="" type="checkbox"/>	Flow rate at regulated pressure (L (gal) / hr @ kPa (psi))	

Fuel Tank

Capacity (refill L (gallons))		51.5 (13.6)
Location (describe)		Underbody - rear center
Attachment		Underbody strap
Material & Mass (kg (weight lbs))		Steel 8.732 (19.3)
Filler pipe	Location & material	R.H. rear quarter
	Connection to tank	Solid solder
Fuel line (material)		Steel
Fuel hose (material)		Rubber
Return line (material)		Steel
Vapor line (material)		Steel
Extended range tank	Opt., n.a.	Not Available
	Capacity (L (gallons))	" "
	Location & material	" "
	Attachment	" "
Auxiliary tank	Opt., n.a.	" "
	Capacity (L (gallons))	" "
	Location & material	" "
	Attachment	" "
	Selector switch or valve	" "
Separate fill		" "

MVMA Specifications Form

Vehicle Line CORSICA
 Model Year 1989 Issued 6-88 Revised (●) 9-88

METRIC (U.S. Customary)

Engine Description/Carb.
 Engine Code

2.0 LTR L-4 (121 CID) (EFI) RPO LL8	2.8 LTR V6 (173 CID) (2.8 MPI) RPO LB6
--	---

Vehicle Emission Control

Exhaust Emission Control	Type (air injection, engine modifications, other)		CCC control with fuel injection	
	Air Injection	Pump or pulse	None	None
		Driven by		None
		Air distribution (head, manifold, etc.)		None
		Point of entry		None
	Exhaust Gas Recirculation	Type (controlled flow, open orifice, other)	Controlled flow	Not available
		Exhaust source	Exhaust manifold	Not available
		Point of exhaust injection (spacer, carburetor, manifold, other)	Inlet manifold	Not available
	Catalytic Converter	Type	Single bed, oxidizing & reducing	
		Number of	One	
		Location(s)	Mounted to center underbody	
		Volume [L (in ³)]	2.78 (170)	
		Substrate type	Monolith	
		Noble metal type	Platinum/Rhodium	
Noble metal concentration (g/cm ³)		0.000949	0.000838	
Crankcase Emission Control	Type (ventilates to atmosphere, induction system, other)		Induction system	
	Energy source (manifold vacuum, carburetor, other)		Manifold vacuum	
	Discharges (to intake manifold, other)		Intake manifold	
	Air inlet (breather cap, other)		Air cleaner	
Evaporative Emission Control	Vapor vented to (crankcase, canister, other)	Fuel tank	Canister	
		Carburetor	--	
	Vapor storage provision		Canister	
Electronic system	Closed loop (yes/no)		Yes	
	Open loop (yes/no)		No	

Engine - Exhaust System

Type (single, single with cross-over, dual, other)		Single (with dual tailpipes 2-doors only)	
Muffler no. & type (reverse flow, straight thru, separate resonator) Material & Mass (kg (weight lbs))		One, reverse flow	
Resonator no. & type		None	
Exhaust pipe	Branch o.d., wall thickness	--	
	Main o.d., wall thickness	50.8 x 0.94 (2.0 x .037)*	50.8 x 0.94 (2.0 x .037)
	Material & Mass (kg (weight lbs))	*	
Inter-mediate pipe	o.d. & wall thickness	50.8 x 1.09 (2.0 x .043)	
	Material & Mass (kg (weight lbs))	Aluminum coated steel	
Tail pipe	o.d. & wall thickness	50.8 x 1.09 (2.0 x .043)	50.8 x 1.09 (2.0 x .043)
	Material & Mass (kg (weight lbs))	Aluminum coated steel	

* - Laminated tubing - steel inner, stainless steel outer.
 ** - Purchased as unit: 9.000 (19.8)

MVMA Specifications Form

Vehicle Line CORSICA
 Model Year 1989 Issued 6-88 Revised (•) _____

METRIC (U.S. Customary)

Engine Description/Carb.
 Engine Code

2.0 Liter L4 (121 CID) RPO LL8
 Electronic Fuel Injection

Transmissions/Transaxle (Std., Opt., N.A.)

Manual 3-speed (manufacturer/country)	Not Available
Manual 4-speed (manufacturer/country)	" "
Manual 5-speed (manufacturer/country)	Standard
Automatic (manufacturer/country)	Optional
Automatic overdrive (manufacturer/country)	Not Available

Manual Transmission/Transaxle

Number of forward speeds	5	
Gear ratios	1st	3.73
	2nd	2.15
	3rd	1.33
	4th	0.92
	5th	0.74
	Reverse	3.50
Synchronous meshing (specify gears)	All forward gears	
Shift lever location	Floor	
Trans. case mat'l. & mass kg (lbs)*	Aluminum	
Lubricant	Capacity [L (pt.)]	5-speed 2.55L (5.36 pts.)
	Type recommended	SAE 5W-30 Engine oil SF, SF/CC or SF/CD

Clutch (Manual Transmission)

Clutch manufacturer	Isuzu	
Clutch type (dry, wet; single, multiple disc)	Dry disc	
Linkage (hydraulic, cable, rod, lever, other)	Hydraulic	
Max. pedal effort (nom. spring load, new) N (lbs)	Depressed	133.4 (30.0)
	Released	115.6 (26.0)
Assist (spring, power/percent, nominal)	Not Available	
Type pressure plate springs	Diaphragm	
Total spring load (nominal, new) N (lbs)	5391 (1212)	
Clutch facing	Facing mfg. & material coding	ISUZU
	Facing material & construction	Non-asbestos
	Rivets per facing	16
	Outside x inside dia. (nominal)	215.0 x 154.0 (8.46 x 6.06)
	Total eff. area (cm ² (in. ²))	176.6 (23.37)
	Thickness (pressure plate side/fly wheel side)	7.8 (.307)
	Rivet depth (pressure plate side/fly wheel side)	1.3 mm (0.05 in)/1.2 mm (0.05 in)
Engagement cushion method	Driven plate, wave spoke springs	
Release bearing type & method lub.	Self centering, angular contact ball bearing pre-packed & sealed.	
Torsional damping method, springs, hysteresis	Coil springs with non-metal friction control.	

* Includes shift linkage, lubricant, and clutch housing. If other specify.

MVMA Specifications Form

Vehicle Line CORSTCA
 Model Year 1989 Issued 6-88 Revised (•) _____

METRIC (U.S. Customary)

Engine Description/Carb.
 Engine Code

2.8 Liter V6 (173 CID) RPO LB6
 Multi-Port FI

Transmissions/Transaxle (Std., Opt., N.A.)

Manual 3-speed (manufacturer/country)	Not Available
Manual 4-speed (manufacturer/country)	" "
Manual 5-speed (manufacturer/country)	Standard
Automatic (manufacturer/country)	Optional
Automatic overdrive (manufacturer/country)	Not Available

Manual Transmission/Transaxle

Number of forward speeds	5	
Gear ratios	1st	3.50
	2nd	2.05
	3rd	1.38
	4th	0.94
	5th	0.72
	Reverse	3.41
Synchronous meshing (specify gears)	All forward gears	
Shift lever location	Floor	
Trans. case mat'l. & mass kg (lbs)*	Aluminum	
Lubricant	Capacity [L (pt.)]	2.55l (5.36 pts.)
	Type recommended	SAE 5W-30 Engine oil SE, SE/CC or SE/CD

Clutch (Manual Transmission)

Clutch manufacturer	IUK	
Clutch type (dry, wet; single, multiple disc)	Dry single disc	
Linkage (hydraulic, cable, rod, lever, other)	Hydraulic	
Max. pedal effort (nom. spring load, new) N (lbs)	Depressed	133.4 (30.0)
	Released	133.4 (30.0)
Assist (spring, power/percent, nominal)	Not Available	
Type pressure plate springs	Diaphragm	
Total spring load (nominal, new) N (lbs)	5698 (1281)	
Clutch facing	Facing mfr. & material coding	IUK
	Facing material & construction	Non-asbestos
	Rivets per facing	32
	Outside x inside dia. (nominal)	232 x 155 (9.12 x 6.12)
	Total eff. area [cm ² (in. ²)]	232 (35.96)
	Thickness (pressure plate side/ fly wheel side)	7.50 - 8.00 (.295 - .315)
	Rivet depth (pressure plate side/ fly wheel side)	1.4 mm (0.06 in)/1.4 mm (0.06 in)
	Engagement cushion method	Driven plate, wave spoke springs
Release bearing type & method lub.	Self centering, angular contact ball bearing pre-packed & sealed.	
Torsional damping method, springs, hysteresis	Coil springs with non-metal friction control.	

* Includes shift linkage, lubricant, and clutch housing. If other specify.

MVMA Specifications Form

Vehicle Line CORSICA
 Model Year 1989 Issued 6-88 Revised (e) 9-88

METRIC (U.S. Customary)

Engine Description/Comb.
 Engine Code

2.0 LTR L-4 (121 CID) RPO LL8 Electronic Fuel Injection	2.8 LTR V6 (173 CID) RPO LB6 2.8 Multi-Port FI
--	---

Automatic Transmission/Transaxle

Trade name		3-speed Automatic	
Type and special features (describe)		Torque converter with clutch 125C	
Selector	Location	Floor	
	Ltr./No. designation	P-R-N-D-2-1	
Gear ratios	1st	2.84	
	2nd	1.60	
	3rd	1.00*	
	4th	Not Applicable	
	Reverse	2.07	
Max. upshift speed - drive range (km/h (mph))		1-2=63(39), 2-3=111(69)	1-2=66(41), 2-3=117(73)
Max. lckdown speed - drive range (km/h (mph))		3-2=100(62), 2-1=58(36)	3-2=111(69), 2-1=58(36)
Min. overdrive speed (km/h (mph))		Not Available	
Torque converter	Number of elements	3	
	Max. ratio at stall	2.7	2.35
	Type of cooling (air, liquid)	Liquid	
	Nominal diameter	245 (9.65)	
Lubricant	Capacity (refill L (pt.))	5.5 (11.6)	
	Type Recommended	Dexron II	
Oil cooler (std., opt., NA, internal, external, air, liquid)			
Transmission case material & mass kg (lbs)**		Standard, integral part of radiator	
* - Converter clutch engagement			

Axle or Front Wheel Drive Unit

Type (front, rear)		Front	
Description		Front differential with helical gears and tapered roller bearings	
Limited slip differential (type)		Not Available	
Drive pinion offset		" "	
Drive pinion (type)		" "	
No. of differential pinions		2	
Pinion/differential adjustment (shim, other)		None	
Pinion/differential bearing adjustment (shim, other)		Shim	
Driving wheel bearing (type)		Sealed ball bearings	
Lubricant	Capacity (L (pt.))	Part of auto. trans. lub.	
	Type recommended	Transmission lub.	

Axle or Transaxle Ratio and Tooth Combinations (See 'Power Teams' for axle ratio usage.)

Axle ratio (or overall top gear ratio)		3.18	3.61	3.83
No. of teeth	Pinion			
	Ring gear or gear			
Ring gear o.d.		195.2		
Transaxle	Transfer gear ratio	--		
	Final drive ratio	--		

* Input speed + $\sqrt{\text{torque}}$

** Includes shift linkage, lubricant, & clutch housing. If other specify.

MVMA Specifications Form

Vehicle Line CORSICA
 Model Year 1989 Issued 6-88 Revised (*) _____

METRIC (U.S. Customary)

Engine Description/Carb.
 Engine Code

2.0 LTR L-4 (121 CID) RPO LL8 Electronic Fuel Injection	2.8 LTR V6 (173 CID) RPO LB6 2.8 Multi-Port FI
--	---

Axle Shafts - Front Wheel Drive

Manufacturer and number used		Two		
Type (straight, solid bar, tubular, etc.)	Left	Straight solid bar		
	Right	Straight solid bar		
Outer diam. x length* x wall thickness	Manual transaxle	Left	23.81 x 320.0 (A) 27.05 x 315.5 (B)	
		Right	46.5 x 663.0 (A) 27.05 x 315.5 (B)	
	Automatic transaxle	Left	23.81 x 311.0 (A) 27.05 x 308.0 (B)	
		Right	23.81 x 364.3 (A) 27.05 x 357.0 (B)	
	Optional transaxle	Left	None	
		Right	None	
Slip yoke	Type	None		
	Number of teeth	None		
	Spine o.d.	None		
Universal joints	Make and mtg. no.	Inner	Saginaw	
		Outer	Saginaw	
	Number used	Two on each drive shaft		
	Type, size, plunge	Inner	TRI-POT (C)	Cross-Groove (D) (E)
		Outer	Rzeppa - fixed	
	Attach (u-bolt, clamp, etc.)	Splined		
Bearng	Type (plain, anti-friction)	Anti-friction		
	Lubrication (fitting, prepack)	Prepacked		
Drive taken through (torque tube, arms or springs)		Wishbone lower control arm; upper MacPherson strut		
Torque taken through (torque tube, arms or springs)		Engine mounting system		

All Wheel/4 Wheel Drive

Description and type (part-time, full-time, 2/4 shift while moving, mechanical, elect., chain/gear, etc.)	
Transfer case	Manufacturer
	Type
	Model
Low-range gear ratio	
System disconnect (describe)	
Center differential	Type (bevel, planetary, w or w/o viscous bias, torsen, etc.)
	Torque split (% front/rear)

* Centerline to centerline of universal joints, or to centerline of attachment.

(A)-Shaft size = 2300 N.m.

(B)-Shaft size = 2700 N.m.

(C)-Plunge = Manual, Left - 24.84mm
 Manual, Right - 33.29mm
 Auto, Left - 24.51mm
 Auto, Right - 25.11mm

(D) Plunge
 Manual, left = 21.89mm
 Manual, right = 27.59mm
 Auto, left = 22.14mm
 Auto, right = 25.29mm

(E)-TRI-POT same as "Auto" in note C, is used with FE3 suspension and auto transmission

MVMA Specifications Form

Vehicle Line CORSICA
 Model Year 1989 Issued 6-88 Revised (●) _____

METRIC (U.S. Customary)

Body Type And/Or
 Engine Displacement

4-Door Notchback Sedan
 11T69

4-Door Hatchback Sedan
 11T68

⊗ Suspension - General Including Electronic Controls

Car leveling	Standard/optional/not avail.	Not Available		
	Manual/automatic control			
	Type (air/hydraulic)			
	Primary/assist spring			
	Rear only/4 wheel leveling			
	Single/dual rate spring			
	Single/dual ride heights			
	Provision for jacking	Body pickup at rocker panels		
Shock absorber damping controls	Standard/option/not avail.	Not Available		
	Manual/automatic control	"	"	
	Number of damping rates	"	"	
	Type of actuation (manual/electric motor/air, etc.)	"	"	
	S e n s o r s	Lateral acceleration	"	"
		Deceleration	"	"
		Acceleration	"	"
		Road surface	"	"
Shock absorber (front & rear)	Type	Front: MacPherson strut, Rear: double acting hydraulic		
	Make	Delco		
	Piston diameter	32.0 (1.26) Front, 25.0 (.98) Rear		
	Rod diameter	25.0 (.98) Front, 12.7 (.50) Rear		

⊗ Suspension - Front

Type and description	MacPherson with coil springs, stamped weldment lower control arms and nodular iron steering knuckles.		
Travel*	Full jounce	92.5 mm (3.6)	
	Full rebound	84.0 mm (3.3)	
Spring	Type (coil, leaf, other) & material	Coil, steel	
	Insulators (type & material)	Upper and lower, natural rubber	
	Size (coil design height & i.d., bar length x dia.)	206.6 (8.1) x 139.0 (5.47) x 2932 (115.4) x 12.9 (.5)	
	Spring rate [N/mm (lb./in.)]	16.0 (91.0) Base and F41, 27.0 (154.0) & FE3 Sedans only	
Stabilizer	Rate at wheel [N/mm (lb./in.)]	17.2 (98.0) Base and F41, 27.5 (157.0) & FE3 Sedans only	
	Type (link, linkless, frameless)	Link	
	Material & bar diameter	Steel, 30.0 (1.18)	

⊗ Suspension - Rear

Type and description	Trailing twist axle with stamped control arms and open section transverse beam		
Travel*	Full jounce	111.0 (4.37)	
	Full rebound	96.0 (3.78)	
Spring	Type (coil, leaf, other) & material	Progressive rate coil, HR steel	
	Size (length x width, coil design height & i.d., bar length & dia.)	290 (11.42) x 105 (4.13) x 2626 (103.4) x 13.6 (.54)	
	Spring rate [N/mm (lb./in.)]	23 (131) Base, F40 & F41 - 28 (160)	
	Rate at wheel [N/mm (lb./in.)]	14.6 (83) Base, F40 & F41 - 16.7 (95)	
	Insulators (type & material)	Rubber - top, rubber & urethane - bottom	
	If leaf	No. of leaves	--
Shackle (comp. or tens.)		--	
Stabilizer	Type (link, linkless, frameless)	None on base L-4, Linkless with V6 or F41	
	Material & bar diameter	Steel, 15mm (.59) Solid w/V6, 19mm (.79) Solid w/F41/FE3	
Track bar (type)	Not Applicable		

* Define load condition:

MVMA Specifications Form

Vehicle Line CORSICA
 Model Year 1989 Issued 6-88 Revised (e) _____

METRIC (U.S. Customary)

Body Type And/Or
 Engine Displacement

4-Door Notchback Sedan 1LT69	4-Door Hatchback Sedan 1LT68
---------------------------------	---------------------------------

Brakes - Service

Description		Single caliper disc front duo-servo drum rear			
Manufacturer and brake type (std., opt., n.a.)	Front (disc or drum)	Disc			
	Rear (disc or drum)	Drum			
Valving type (proportion, delay, metering, other)		Proportioning. Diagonal split circuit.			
Power brake (std., opt., n.a.)		Standard			
Booster type (remote, integral, vac., hyd., etc.)		Tandem vacuum			
Vacuum	Source (in-line, pump, etc.)	Inline (intake manifold)			
	Reservoir (volume in. ³) and source	None			
	Pump-type (elec, gear driven, belt driven)	"			
Traction control	Operational speed range	Not Available			
	Type engine intervention (electronic, mech.)	"			
Anti-lock device	Front/rear (std., opt., n.a.)	Not Available			
	Manufacturer	"			
	Type (electronic, mech.)	"			
	Number sensors or circuits	"			
	Number anti-lock hydraulic circuits	"			
	Integral or add-on system	"			
	Yaw control (yes, no)	"			
Hydraulic power source (elect., vac. mtr., pwr. strg.)		"			
Effective area [cm ² (in. ²)]*		493.5 (76.5)			
Gross lining area [cm ² (in. ²)]**(F/R)		511.0 (79.2)			
Swept area [cm ² (in. ²)]**(F/R)		1669.9 (258.9)			
Rotor	Outerworking diameter	F/R	242.4 (9.54) / --		
	Inner working diameter	F/R	149.6 (5.89)		
	Thickness	F/R	22.4 (0.88) / --		
	Material & type (vented/solid)	F/R	Cast iron, vented / --		
Drum	Diameter & width	F/R	-- / 200 x 45 (7.87 x 1.77)		
	Type and material	F/R	-- / Cast iron, non-finned		
Wheel cylinder bore		57 (2.24) / 16 (.63)			
Master cylinder	Bore/stroke	F/R	22.2 (.87) / 35.21 (1.39)		
Pedal arc ratio		3.7:1			
Line pressure at 445 N(100 lb.) pedal load [kPa (psi)]		Not Available			
Lining clearance		F/R	Self adjusting		
Brake lining	Front wheel	Bonded or riveted (rivets/seg.)		In-board, outboard-integrally molded	
		Rivet size		Not Applicable	
		Manufacturer		Delco Moraine	
		Lining code*****		128 FE	
		Material		Semi-metallic	
		***	Primary or out-board	(116.7 x 42.9 x 7.9) (4.59 x 1.69 x .31)	
		Size	Secondary or in-board	(122.0 x 41.5 x 11.2) (4.80 x 1.63 x .44)	
	Shoe thickness (no lining)		4.85 I.B., 3.27 O.B. (.191 I.B., .129 O.B.)		
	Rear wheel	Bonded or riveted (rivets/seg.)		Riveted, (8)	
		Manufacturer		Inland Division	
		Lining code*****		235 FE	
		Material		Organic	
		***	Primary or out-board	165.5 x 43.9 x 4.7 (6.52 x 1.73 x .19)	
Size		Secondary or in-board	198.7 x 43.9 x 6.6 (7.82 x 1.73 x .26)		
Shoe thickness (no lining)		1.98 (.07)			

*Excludes rivet holes, grooves, chamfers, etc.

**Includes rivet holes, grooves, chamfers, etc.

***Total swept area for four brakes. (Drum brake: Widest lining contact width for each brake x its contact circumference.)

(Disc brake: Square of Outer Working Dia. minus Square of inner Working Dia. multiplied by Pi/2 for each brake.)

****Size for drum brakes includes length x width x thickness.

*****Manufacturer I.D., catalog or formulation designation and coefficient of friction classification.

MVMA Specifications Form

Vehicle Line CORSICA
 Model Year 1989 Issued 6-88 Revised (e) _____

METRIC (U.S. Customary)

Body Type And/Or
 Engine Displacement

4-Door Notchback Sedan
 11T69

4-Door Hatchback Sedan
 11T68

Tires And Wheels (Standard)

Tires	Size (load range, ply)		P185/75 R14 BW
	Type (bias, radial, steel, nylon, etc.)		Steel Belted Radial
	Inflation pressure (cold) for recommended max. vehicle load	Front (kPa (psi))	240 (35)
		Rear (kPa (psi))	240 (35)
	Rev./mile—at 70 km/h (45 mph)		
Wheels	Type & material		Steel
	Rim (size & flange type)		14 x 6
	Wheel offset		47 (1.85)
	Attachment	Type (bolt or stud)	Stud
		Circle diameter	100.0 (3.94)
Number & size		5-M12 x 1.5 - 6H, THD. (metric)	
Spare	Tire and wheel		T115/70D - 14 BW, Wheel dia. 14 x 4. Inflation 415 (60)
	Storage position & location (describe)		Flat under rear load floor

Tires And Wheels (Optional)

Tire size (load range, ply)		P195/70R-14 BW
Type (bias, radial, steel, nylon, etc.)		Steel Belted Radial
Wheel (type & material)		Steel
Rim (size, flange type and offset)		14 x 6
Tire size (load range, ply)		P195/70R-14 BW
Type (bias, radial, steel, nylon, etc.)		Steel Belted Radial
Wheel (type & material)		Aluminum
Rim (size, flange type and offset)		14 x 6
Tire size (load range, ply)		P205/60R-15 BW
Type (bias, radial, steel, nylon, etc.)		Steel Belted Radial
Wheel (type & material)		Aluminum
Rim (size, flange type and offset)		15 x 6
Tire size (load range, ply)		P185/75R-14 BW
Type (bias, radial, steel, nylon, etc.)		Steel belted radial
Wheel (type & material)		Steel
Rim (size, flange type and offset)		14 x 6
Spare tire and wheel size (if configuration is different than road tire or wheel, describe optional spare tire and/or wheel location & storage position)		

Brakes - Parking

Type of control		Hand Lever Assembly
Location of control		In console between front seats
Operates on		Rear service brakes
If separate from service brakes	Type (internal or external)	--
	Drum diameter	--
	Lining size (length x width x thickness)	--

MVMA Specifications Form

Vehicle Line CORSICA
 Model Year 1989 Issued 6-88 Revised (e) 9-88

METRIC (U.S. Customary)

Body Type And/Or Engine Displacement	4-Door Notchback Sedan 1LT69	4-Door Hatchback Sedan 1LT68
---	---------------------------------	---------------------------------

Steering

Manual (std., opt., n.a.)		Not Available		
Power (std., opt., n.a.)		Standard		
Adjustable steering wheel/column (tilt, telescope, other)	Type	Tilt		
	Manufacturer	Saginaw Steering Gear		
	(Std., opt., n.a.)	Optional		
Wheel diameter** (W9) SAE J1100	Manual	--		
	Power	378-381mm (14.88 - 15.00 in.)		
Turning diameter m (ft.)	Outside front	Wall to wall (l. & r.)	11.72 (38.46 ft)	
		Curb to curb (l. & r.)	10.83 (35.54 ft)	
	Inside rear	Wall to wall (l. & r.)	Not Available	
		Curb to curb (l. & r.)	" "	
Scrub Radius*		--		
Manual	Gear	Type	Not Available	
		Manufacturer	--	
		Ratios	Gear	--
			Overall	--
	No. wheel turns (stop to stop)		--	
Power	Type (coaxial, elec., hyd., etc.)		Hydraulic	
	Manufacturer		Saginaw Steering Gear Div. G.M.C.	
	Gear	Type	Rack and pinion w/center take-off tie rods - integral	
		Ratios	Gear	Not Applicable
			Overall	16.12:1 Base (On Center) 13.96:1 F41/FE3 (On Center)
	Pump (drive)		Belt off crankshaft pulley	
	No. wheel turns (stop to stop)		2.88 Base	2.50 F41/FE3
Linkage	Type		Center take off tie rods, rack and pinion	
	Location (front or rear of wheels, other)			
	Tie rods (one or two)		Rear	
Steering axis	Inclination at camber (deg.)		14° at +0.5°	
	Bearings (type)	Upper	Strut mount	
		Lower	Ball joint	
		Thrust	Not Applicable	
Steering spindle & joint type		"		
Wheel spindle/hub	Diameter	Inner bearing	"	
		Outer bearing	"	
	Thread (size)		M20 x 1.5	
	Bearing (type)		Integral double row ball, permanently lubricated	

*The horizontal distance in the front elevation between wheel centerline and kingpin (ball joint) axis at ground.

**See Page 22

MVMA Specifications Form

Vehicle Line CORSICA

Model Year 1989

Issued 6-88

Revised (•) _____

METRIC (U.S. Customary)

Body Type And/Or
Engine Displacement

4-Door Notchback Sedan
11T69

4-Door Hatchback Sedan
11T68

Wheel Alignment

Front wheel at curb mass (wt.)	Service checking	Caster (deg.)	Not adjustable
		Camber (deg.)	.6° +/- .6 Base/F41 - .2 +/- .6 FF3
		Toe-in [outside track-mm (in.)]	0 +/- .10
Front wheel at curb mass (wt.)	Service reset*	Caster	Not adjustable
		Camber	.6° +/- .6 Base/F41 - .2 +/- .6 FF3
		Toe-in	0 +/- .10
Periodic M.V. inspection	Caster	Not adjustable	
	Camber	--	
	Toe-in	--	
Rear wheel at curb mass (wt.)	Service checking	Camber (deg.)	Not Applicable
		Toe-in [outside track-mm (in.)]	"
	Service reset*	Camber	"
		Toe-in	"
	Periodic M.V. inspection	Camber	"
		Toe-in	"

* Indicates pre-set, adjustable, trend set or other.

Electrical - Instruments and Equipment

Base Cluster

Opt. Gage Cluster

Speedometer	Type (analog, digital, std., opt.)	Half circle electric analog dial w/pointer	
	Trip odometer (std., opt., n.a.)	Not Available	Standard
EGR maintenance indicator		Not Available	Not Available
Charge indicator	Type	Tell-Tale Warning Light	Gage
	Warning device (light, audible)	Inherent	Not Available
Temperature indicator	Type	Tell-Tale Warning Light	Gage
	Warning device (light, audible)	Inherent	Tell-Tale W.L.
Oil pressure indicator	Type	Tell-Tale Warning Light	Gage
	Warning device (light, audible)	Inherent	Not Available
Fuel indicator	Type	Electric gauge w/ pointer	Gage
	Warning device (light, audible)	Not Available	Not Available
Windshield wiper	Type (standard)	Electric 2-speed	
	Type (optional)	Intermittent windshield wiper system	
	Blade length	482.6 (19.0)	
	Swept area [cm ² (in. ²)]	6228.6 (965.4)	
Windshield washer	Type (standard)	Wet-Arm System, sliding switch on RH instrument	
	Type (optional)	Not Available	cluster pod
	Fluid level indicator (light, audible)	" "	
Rear window wiper, wiper/washer (std., opt., n.a.)		" "	
Horn	Type	Vibrator	
	Number used	One ('E' note) ('A' note optional in addition)	
Other	Headlamp-on Warning	Standard, Chimes	

MVMA Specifications Form

Vehicle Line CORSICA
 Model Year 1989 Issued 6-88 Revised (e) 9-88

METRIC (U.S. Customary)

Engine Description/Carb.
 Engine Code

2.0 LTR L-4 (121 CID) RPO LL8 Electronic Fuel Injection	2.8 LTR V6 (173 CID) RPO LB5 2.8 Multi-Port FI
--	---

Electrical - Supply System

Battery	Manufacturer	Delco Remy	
	Model, std., (opt.)	75-525, 75-630 H.D.	
	Voltage	12 Volt	
	Amps at 0°F cold crank	525, 630 H.D.	
	Minutes-reserve capacity	75 minutes base, 90 minutes H.D.	
	Amp/hrs. - 20 hr. rate	--	
Alternator	Location	Engine compartment	
	Manufacturer	Delco Remy	
	Rating (idle/max. rpm)	Diode rectified, 42 amps	
	Ratio (alt. crank/rev.)	2.3:1	
	Output at idle (rpm, park)		
Regulator	Optional (type & rating)	None	
	Type	Integral with Alternator	

Electrical - Starting System

Start, motor	Manufacturer	Delco Remy	
	Current drain at 0°F -20°F	305 @ -20	
	Power rating (kw (hp))	1.5 (2.0)	1.4 (1.9)
Motor drive	Engagement type	Solenoid	
	Pinion engages from (front, rear)	Front	

Electrical - Ignition System

Type	Electronic (std., opt., n.a.)	--		
	Other (specify)	Computer controlled - coil ignition (C ³ I)		
Coil	Manufacturer	Delco Remy		
	Model	1103761	1103759	
	Current	Engine stopped - A	Not Available	
		Engine idling - A	"	"
Spark plug	Manufacturer	AC spark plug		
	Model	FR31M	R43CTLSE	
	Thread (mm)	M14 x 1.25		
	Tightening torque (N-m (lb. ft))	9-20 (7-15)		
	Gap	0.89 (.035)	1.14 (.045)	
Distributor	Number per cylinder	One		
	Manufacturer	Not Applicable		
	Model	" "		

Electrical - Suppression

Locations & type	Internal alternator capacitor, non-metallic high-tension ignition cables, resistor spark plugs, ignition coil by-pass capacitor, internal AC blower motor by-pass capacitor & A/C compression diode, with radio provisions; hood grounding clip, engine to dash panel ground strap, fuse block capacitor and on "heater only" blower motors and coax capacitor.
------------------	---

MVMA Specifications Form

Vehicle Models CORSICA
 Model Year 1989 Issued 6-88 Revised (e) _____

METRIC (U.S. Customary)

Body Type	4-Door Notchback Sedan 1LT69	4-Door Hatchback Sedan 1LT68
-----------	---------------------------------	---------------------------------

Body

Structure	Unitized body construction including front end structure with bolted-on fenders and hood.
<input checked="" type="checkbox"/> Bumper system front - rear	Bumper fascias are attached to steel impact bar and dual enersorbers for collision energy absorption. (Meets G.M. 5 mph impact standard).
Anti-corrosion treatment	Special anticorrosion materials are used on interior and exterior metal panel surfaces. Materials include one and two-sided galvanized, ELPO coatings, primers, protective waxes and sealers are used on interior surfaces.

Body - Miscellaneous Information

Type of finish (lacquer, enamel, other)	High solids basecoat/clearcoat enamel	
Hood	Material & mass	Two sides galvanized steel 17.23 Kg (38.0 lbs)
	Hinge location (front, rear)	Rear
	Type (counterbalance, prop)	Prop
	Release control (internal, external)	Internal
Trunk lid	Material & mass	Two sides galvanized steel
	Type (counterbalance, other)	Torsion rods
	Internal release control (elec., mech., n.a.)	Electrical-Optional
Hatch-back lid	Material & mass	Two sides galvanized steel w/attached S.M.C. heavertail
	Type (counterbalance, other)	Gas struts asm, glass & plastic mldgs
	Internal release control (elec., mech., n.a.)	Electric - Optional
Tailgate	Material & mass	Not Applicable
	Type (drop, lift, door)	" "
	Internal release control (elec., mech., n.a.)	" "
Vent window control (crank, friction, pivot, power)	Front	None
	Rear	"
Window regulator type (cable, tape, flex, drive, etc.)	Front	Not Applicable
	Rear	" "
Seat cushion type (e.g., 60/40, bucket, bench, wire, foam etc.)	Front	Bucket with polyurethane padding
	Rear	Bench with polyurethane padding
	3rd seat	Not Applicable
Seat back type (e.g., 60/40, bucket, bench, wire, foam etc.)	Front	Reclining bucket with polyurethane padding
	Rear	Fixed bench with polyurethane padding * **
	3rd seat	Not Applicable
		* Full-folding rear seat for hatchback
		** Corsica LTZ, 60/40 split folding rear seat standard

MVMA Specifications Form
METRIC (U.S. Customary)

Vehicle Line CORSICA
 Model Year 1989 Issued 6-88 Revised (•) _____

Body Type

4-Door Notchback Sedan 11T69	4-Door Hatchback Sedan 11T68
---------------------------------	---------------------------------

Restraint System

Seating Position		Left	Center	Right
Active	Type & description (lap & shoulder belt, lap belt, etc.)	First seat		
	Standard / optional	Second seat		
		Third seat		
Passive	Type & description (air bag, motorized - 2-point belt, fixed belt, knee bolster, manual - lap belt)	First seat	--	3 Point Door Mounted Passive System
	Standard / optional	Second seat	Adjustable Latch 2 Point Belt (Non-Retractor)	3 Point Active Belt
		Third seat		

Glass	SAE Ref. No.	
Windshield glass exposed surface area [cm ² (in. ²)]	S1	8913 cm ² (1382 in ²)
Side glass exposed surface area [cm ² (in. ²)] - total 2-sides	S2	11553 cm ² (1791 in ²)
Backlight glass exposed surface area [cm ² (in. ²)]	S3	Not Available 13,870 cm ² (2150 in ²)
Total glass exposed surface area [cm ² (in. ²)]	S4	Not Available 34336 cm ² (5323 in ²)
Windshield glass (type)		Laminated
Side glass (type)		Tempered
Backlight glass (type)		Tempered

Lamps and Headlamp Locations

Headlamps	Description - sealed beam, halogen, replaceable bulb, etc.	Halogen, replaceable bulb Rectangular
	Shape	
	Lo-beam type (2A1, 2B1, 2C1, etc.)	HB3 2
	Quantity	HB4
	Hi-beam type (1A1, 2A1, 1C1, 2C1, etc.)	2
	Quantity	

Frame

Type and description (separate frame, unitized frame, partially-unitized frame)	Body-frame integral with bolt-on power train cradle
---	---

MVMA Specifications Form
METRIC (U.S. Customary)

Vehicle Line CORSICA
 Model Year 1989 Issued 6-88 Revised (e) _____

Body Type

4-Door Notchback Sedan 1LT69	4-Door Hatchback Sedan 1LT68
---------------------------------	---------------------------------

Convenience Equipment (standard, optional, n.s.)

<input checked="" type="checkbox"/> Air conditioning (manual, auto. temp control)	Optional (manual control)
Clock (digital, analog)	Digital (integ. w/stereo radios)
Compass / thermometer	Not Available
Console (floor, overhead)	Optional, full floor, overhead console*
Defroster, elec. backlight	Optional
Diagnostic monitor (integrated, individual)	Not Available
Instrument cluster (list instruments)	"
Keyless entry	"
Electronic Tripminder (avg. spd., fuel)	"
Voice alert (list items)	"
Other	"
Fuel door lock (remote, key, electric)	Not Available
Auto head on/off delay, dimming	"
Cornering	"
Courtesy (map, reading)	*
Door lock, ignition	Not Available
Engine compartment	*
Lamps Fog	Not Available
Glove compartment	"
Trunk	*
Illuminated entry system (list lamps, activation)	
Other	Ash tray lamp standard
Mirrors Day/night (auto. man.)	Standard (manual)
L.H. (remote, power, heated)	Standard (remote)
R. H. (convex, remote, power, heated)	Standard (manual convex)
Visor vanity (RH / LH, illuminated)	Visor Mirror R.H. **
<input checked="" type="checkbox"/> Navigation system (describe)	Not Available
Parking brake-auto release (warning light)	Standard (manual release) lower area of speedometer

- * - Available in optional lighting package (RPO TR9)
- ** - Available in optional custom interior (RPO B18)

MVMA Specifications Form
METRIC (U.S. Customary)

Vehicle Line CORSICA
 Model Year 1989 Issued 6-88 Revised (•) _____

Body Type

4-Door Notchback Sedan 1LT69	4-Door Hatchback Sedan 1LT68
---------------------------------	---------------------------------

Convenience Equipment (standard, optional, n.a.)

Power equipment	Deck lid (release, pull down)		Optional Power Release
	Door locks (manual, automatic, describe system)		Optional manual power door locks
	Seats	2 - 4 - 6 way, etc.	
		Reclining (R.H., L.H.)	
		Memory (R.H., L.H., preset, recline)	
		Lumbar, hip, thigh, support	
		Heated (R.H., L.H., other)	
	Side windows		Optional*
	Vent windows		Not Available
	Rear windows		" "
Radio systems	Antenna (location, whip, w/shield, power)		Front fender-R.H., fixed mast standard
	Standard	AM, FM, stereo, tape, compact disc, graphic equalizer, theft deterrent, radio prep package, headphone jacks, etc.	Electronically tuned AM/FM stereo radio with seek and scan and clock. Includes dual front and extended range rear speakers.
	Optional		UM6** electronically tuned AM/FM stereo with cassette, seek and scan and clock. Includes dual front and extended range rear speakers. UX1** electronically tuned AM stereo/FM stereo with cassette, seek and scan, clock and graphic equalizer. Includes dual front and extended range rear speakers.
	Speaker (number, location)		4 speakers; two in front and two in rear
Roof open air fixed (flip-up, sliding, "T")			Not Available
Speed control device			Optional***
Speed warning device (light, buzzer, etc.)			Not Available
Tachometer (rpm)			Optional @
Telephone system (describe)			Not Available
Theft deterrent system <u>Auto. trans. - lock mounted on steering column; locks steering wheel, auto. trans. shift lever and ignition. Manual trans. - lock mounted on steering column; locks steering wheel and ignition. Plus anti-theft design door lock buttons.</u>			

- @ Available together with voltemeter, temperature and oil pressure gauges and trip odometer (RPO UB3).
- * Requires AU3 power locks.
- ** Requires C60 air conditioning
- *** Requires N33 tilt steering wheel

MVMA Specifications Form

Vehicle Models CORSICA
 Model Year 1989 Issued 6-88 Revised (e)

METRIC (U.S. Customary)

Vehicle Dimensions See Key Sheets for definitions

All dimensions to ground are for comparative purposes only. Dimensions are to be shown for all base body models of each vehicle line. SAE Ref. no. refers to the definition published in SAE Recommended Practice J1100 "Motor Vehicle Dimensions," unless otherwise specified.

Body Type	SAE Ref. No.	4-Door Notchback Sedan	4-Door Hatchback Sedan
Width		11T69	11T68
Tread (front)	W101	1417 (55.8)	
Tread (rear)	W102	1404 (55.3)	
Vehicle width	W103	1733 (68.2)	
Body width at Sg RP (front)	W117	1726 (68.0)	
Vehicle width (front doors open)	W120	3314 (130.5)	
Vehicle width (rear doors open)	W121	3404 (134.0)	
Front fender overall width	W106	1698 (66.9)	
Rear fender overall width	W107	1664 (65.5)	
Tumble-home (deg.)	W122	24.0	
Vehicle width including mirrors			

Length

Wheelbase	L101	2627 (103.4)
Vehicle length	L103	4659 (183.4)
Overhang (front)	L104	975 (38.4)
Overhang (rear)	L105	1057 (41.6)
Upper structure length	L123	2656 (104.6)
Rear wheel C/L "X" coordinate	L127	2410 (94.9)
Cowl point "X" coordinate	L125	136 (5.4)
Front end length at centerline	L126	1326 (52.2)
Rear end length at centerline	L129	563 (22.2)

Height **

Passenger distribution (front/rear)	PD1,2,3		**
Trunk/cargo load			**
Vehicle height	H101	1428 (56.2)	
Cowl point to ground	H114	951 (37.4)	
Deck point to ground	H138	1053 (41.5)	
Rocker panel-front to ground	H112	221 (8.7)	
Bottom of door closed-front to ground	H133	267 (10.5)	
Rocker panel-rear to ground	H111	220 (8.7)	
Bottom of door closed-rear to ground	H135	268 (10.6)	
Windshield slope angle	H122	60.5	
Backlight slope angle	H121	60.5	

Ground Clearance **

Front bumper to ground	H102	322 (12.7)
Rear bumper to ground	H104	354 (13.9)
Bumper to ground (front at curb mass (wt.))	H103	336 (13.2)
Bumper to ground (rear at curb mass (wt.))	H105	396 (15.6)
Angle of approach (degrees)	H106	-14.3°
Angle of departure (degrees)	H107	18.7°
Ramp breakover angle (degrees)	H147	5.8°
Axle differential to ground (front / rear)	H153	Not Available
Min. running ground clearance	H156	149 (5.9)
Location of min. run. grd. clear.		

** All Vehicle Height And Ground Clearance Are Made Using EPA Loaded Vehicle Weight, Loading Conditions.

EPA Loaded Vehicle Weight is the Base Vehicle Weight Plus All Coolant And Fluids Necessary For Operation Plus 100% Of The Fuel Capacity, Plus The Weight Of All Options And Accessories Which Weigh Three Pounds Or More And Which Are Sold On At Least 33% Of The Car Line, Plus Two Occupants.

MVMA Specifications Form

METRIC (U.S. Customary)

Vehicle Dimensions See Key Sheets for definitions

Vehicle Models CORSICA
 Model Year 1989 Issued 6-88 Revised (e) _____

Body Type	4-Door Notchback Sedan 1LT69	4-Door Hatchback Sedan 1LT68
-----------	---------------------------------	---------------------------------

	SAE Ref. No.	
Front Compartment		
Sg RP front, "X" coordinate	L31	1138 (44.8)
Effective head room	H61	968 (38.1)
Max. eff. leg room (accelerator)	L34	1103 (43.4)
SgRP to heel point	H30	248 (9.8)
SgRP to heel point	L53	909 (35.8)
Back angle	L40	26.5
Hip angle	L42	103.5
Knee angle	L44	137.0
Foot angle	L46	87.0
Design H-point front travel	L17	224 (8.8)
Normal driving & riding seat track trvl.	L23	200 (7.9)
Shoulder room	W3	1408 (55.4)
Hip room	W5	1294 (50.9)
** Upper body opening to ground	H50	935 (36.8)
Steering wheel maximum diameter*	W9	382 (15.0)
Steering wheel angle	H18	18.5
Accel. heel pt. to steer. whl. cntr	L11	Not Available
Accel. heel pt. to steer. whl. cntr	H17	" "
Steering wheel to C/L of thigh	H13	116 (4.6)
Steering wheel torso clearance	L7	366 (14.4)
Headlining to roof panel (front)	H37	22 (0.9)
Undepressed floor covering thickness	H67	14 (0.6)

Front Compartment Interior Dimensions Are Measured With The Seating Reference Point (SgRP) _____ mm
 (2 Seat Adjuster Notches) Forward Of Rearmost Seat Position.

Rear Compartment		
Sg RP Point couple distance	L50	787 (31.0)
Effective head room	H63	950 (37.4)
Min. effective leg room	L51	890 (35.0)
Sg RP (second to heel)	H31	265 (10.4)
Knee clearance	L48	22 (0.9)
Compartment room	L3	640 (25.2)
Shoulder room	W4	1412 (55.6)
Hip room	W6	1300 (51.2)
** Upper body opening to ground	H51	807 (31.8)
Back angle	L41	24.5
Hip angle	L43	88.0
Knee angle	L45	88.0
Foot angle	L47	122.5
Headlining to roof panel (second)	H38	27 (1.1)
Depressed floor covering thickness	H73	20 (0.8)

Luggage Compartment		
Usable luggage capacity [L (cu. ft.)]	V1	382.6 (13.51)
** L/Over height	H195	887 (34.9)

Interior Volumes (EPA Classification)		
Vehicle class		Compact
Interior volume index (cu. ft.)		108.6
Trunk/cargo index (cu. ft.)		13.5

All linear dimensions are in millimeters (inches).
 ** EPA Loaded Vehicle Weight, Loading Conditions

MVMA Specifications Form

Vehicle Line CORSICA
 Model Year 1989 Issued 6-88 Revised (e) _____

METRIC (U.S. Customary)

Vehicle Dimensions See Key Sheets for definitions

Body Type

4-Door Notchback Sedan 1LT69	4-Door Hatchback Sedan 1LT68
---------------------------------	---------------------------------

SAE
Ref.
No.

Station Wagon - Third Seat

Seat facing direction	SD1	Not
Sg RP couple distance	L85	Applicable
Shoulder room	W85	
Hip room	W86	
Effective leg room	L86	
Effective head room	H86	
Sg RP to heel point	H87	
Knee clearance	L87	
Back angle	L88	
Hip angle	L89	
Knee angle	L90	
Foot angle	L91	

Station Wagon - Cargo Space

Cargo length (open front)	L200	Not
Cargo length (open second)	L201	Applicable
Cargo length (closed front)	L202	
Cargo length (closed second)	L203	
Cargo length at belt (front)	L204	
Cargo length at belt (second)	L205	
Cargo width (warehouse)	W201	
Rear opening width at floor	W203	
Opening width at belt	W204	
Min. rear opening width above belt	W205	
Cargo height	H201	
Rear opening height	H202	
Tailgate to ground height	H250	
Front seat back to load floor height	H197	
Cargo volume index [m ³ (ft. ³)]	V2	
Hidden cargo volume index [m ³ (ft. ³)]	V4	
Cargo volume index-rear of 2-seat	V10	

Hatchback - Cargo Space

Cargo length at front seatback height	L208	Not
Cargo length at floor (front)	L209	Applicable
Cargo length at second seatback height	L210	
Cargo length at floor (second)	L211	
Front seatback to load floor height	H197	
Second seatback to load floor height	H198	
Cargo volume index [m ³ (ft. ³)]	V3	
Hidden cargo volume index [m ³ (ft. ³)]	V4	
Cargo volume index-rear of 2-seat	V11	

Aerodynamics*

Wheel lip to ground, front	Not Available
Wheel lip to ground, rear	" "
Frontal area [m ² (ft. ²)]	1.99 (21.4)
Drag coefficient (Cd)	Not Available

* EPA Loaded Vehicle Weight, Loading Conditions

MVMA Specifications Form

METRIC (U.S. Customary)

Vehicle Line CORSICA
 Model Year 1989 Issued 6-88 Revised (e) _____

Body Type	4-Door Notchback Sedan 1LT69	4-Door Hatchback Sedan 1LT68
-----------	---------------------------------	---------------------------------

Vehicle Fiducial Marks

Fiducial Mark Number*	Define Coordinate Location
Front	X - Fiducial mark to vertical base grid line - front measured horizontally, from the base grid line to the front fiducial mark located on top of the front seat adjuster mounting bolt.
	Y - Fiducial mark to centerline of car - front, width measurement made from centerline car to fiducial mark located on top of the front seat adjuster mounting bolt.
	Z - Fiducial mark to horizontal base grid line - front, measured vertically from base grid line to front fiducial mark located on top of the front seat adjuster mounting bolt.
Rear	X - Fiducial mark to vertical base grid line - rear, measured horizontally from the base grid line to rear fiducial mark located on the rail (compartment pan - longitudinal).
	Y - Fiducial mark to centerline of car - rear, width measurement made from centerline of car to fiducial mark located on the rail (compartment pan longitudinal).
	Z - Fiducial mark to horizontal base grid line - rear, measured vertically from the base grid line to rear fiducial mark located on the rail (compartment pan - longitudinal).
Front	W21° 346 (13.6)
	L54° 2760 (108.7)
	H81° 2001 (7.9)
	H161° Not Available
	** H163° " "
Rear	W22° 440 (17.3)
	L55° 4953 (195.0)
	H82° 362 (14.3)
	H162° Not Available
	** H164° " "

* Reference - SAE Recommended Practice, J182, Motor Vehicle Fiducial Marks.

All linear dimensions are in millimeters (inches).

** EPA Loaded Vehicle Weight, Loading Conditions

MVMA Specifications Form

Vehicle Line CORSICA
 Model Year 1989 Issued 6-88 Revised (*) _____

METRIC (U.S. Customary)

		Vehicle Mass (weight)							
Code	Model	CURB MASS. kg. (lb.)*			% PASS. MASS DISTRIBUTION				ETWC**
		Front	Rear	Total	Pass In Front		Pass In Rear		
					Front	Rear	Front	Rear	
	Corsica								
1LT69	4-Door Notchback Sedan	792.3 (1746)	385.0 (849)	1177.2 (2595)					3000 (lbs)
1LT68	4-Door Hatchback Sedan	748.7 (1650)	435.4 (960)	1184.1 (2610)					3000 (lbs)

SHIPPING MASS (weight) = Curb Weight Less Kg. (lbs.) 31.2 (68.8)

* Reference - SAE J1100 Motor vehicle dimensions, curb weight definition.
 ** ETWC - Equivalent Test Weight Class - U.S. Environmental Protection Agency emission certifications are based on the ETWC's shown.
 NA - Not Applicable - applies to model/series combinations not requiring testing.

MVMA Specifications Form

Vehicle Line CORSICA

Model Year 1989 Issued 6-88 Revised (e) _____

METRIC (U.S. Customary)

Code	Equipment	Optional Equipment Differential Mass (weight)*			Remarks Restrictions, Requirements
		MASS, kg. (lb.)			
		Front	Rear	Total	
RPO AU3	Power Door Lock System	1.2 (2.6)	1.8 (4.0)	3.0 (6.6)	
RPO A31	Power Windows	1.4 (3.1)	2.2 (4.8)	3.6 (7.9)	
RPO A78	4-Way Mechanical Front Pass Seat Adjuster	.8 (1.8)	1.0 (2.2)	1.8 (4.0)	
RPO A90	Power Trunk Opener	.2 (0.4)	1.0 (2.2)	.8 (1.8)	
RPO B18	Custom Interior	1.0 (2.2)	1.0 (2.2)	2.0 (4.4)	
RPO B34	Floor Mats - Front	1.0 (2.2)	.2 (0.4)	1.2 (2.6)	
RPO B35	Floor Mats - Rear	.2 (0.4)	.4 (0.9)	.6 (1.3)	
RPO CD4	Intermittent Windshield Wiper System	.2 (0.4)	0 (0)	.2 (0.4)	
RPO C49	Electric Rear Window Defogger	0 (0)	.6 (1.3)	.6 (1.3)	
RPO C60	Air Conditioning	20.4 (45.0)	-1.4 (-3.1)	19.0 (41.9)	With RPO LB8 Engine & MR3
		20.0 (44.1)	-1.4 (-3.1)	18.6 (41.0)	With RPO LB6 Engine & MG2
RPO D55	Full Floor Console	1.8 (4.0)	1.2 (2.6)	3.0 (6.6)	
RPO F40	Heavy Duty Front and Rear Suspension	1.4 (3.1)	1.0 (2.2)	2.4 (5.3)	
RPO F41	Sport Suspension	2.0 (4.4)	1.4 (3.1)	3.4 (7.5)	Included on 'LT' Model (Z11)
RPO K05	Engine Block Heater	.2 (0.4)	0 (0)	.2 (0.4)	
RPO K34	Electronic Speed Control (w/Resume Speed)	1.8 (4.0)	0 (0)	1.8 (4.0)	

* Also see Engine - General Section for dressed engine mass (weight).

MVMA Specifications Form

Vehicle Line CORSICA
 Model Year 1989 Issued 6-88 Revised (#) _____

METRIC (U.S. Customary)

Code	Equipment	Optional Equipment Differential Mass (weight)*			Remarks Restrictions, Requirements
		MASS, kg. (lb.)			
		Front	Rear	Total	
RPO LB6	2.8 Liter V6 Engine	46.0 (101.4)	-3.0 (-6.6)	43.0 (94.8)	With Manual Transmission
		38.2 (84.2)	-3.2 (-7.0)	35.0 (77.2)	With Automatic Transmission
RPO MX1	Automatic Transmission	18.4 (40.6)	-1.4 (-3.1)	17.0 (37.5)	With RPO LL8 Engine
		28.6 (63.9)	-1.8 (-4.0)	26.8 (59.0)	With RPO LB6 Engine
RPO N33	Comfortilt Steering Wheel	.4 (0.9)	.2 (0.4)	.6 (1.3)	
RPO PD8	Aluminum Wheels - 14"	-4.4 (-9.7)	-4.4 (-9.7)	-8.8 (-19.4)	
RPO PC4	Styled Steel Wheels-14"	-.8 (-1.8)	-.8 (-1.8)	-1.6 (-3.6)	
P185/75R14	WW	2.6 (5.7)	2.6 (5.7)	5.2 (11.4)	
P195/70	R14 Tires	2.6 (5.7)	2.6 (5.7)	5.2 (11.4)	
RPO UA1	Heavy Duty Battery	3.0 (6.6)	-.4 (-0.9)	2.6 (5.7)	Required with Auto. Trans. on L4. Mandatory for Canada
RPO UM6	AM/FM Stereo Radio, Cassette Player with Clock	.8 (1.8)	.2 (0.4)	1.0 (2.2)	
RPO UM7	AM/FM Stereo Radio with Clock	.2 (0.4)	0 (0)	.2 (0.4)	
RPO UX1	AM/FM Stereo Radio, Cassette Player, Graphic Equalizer with Clock	1.8 (4.0)	.2 (0.4)	2.0 (4.4)	
RPO 005	Dual Note Horns	.4 (0.9)	0 (0)	.4 (0.9)	

* Also see Engine - General Section for dressed engine mass (weight).

MVMA Specifications Form

METRIC (U.S. Customary)

Vehicle Line CORSICA
 Model Year 1989 Issued 6-88 Revised (e) _____

		Optional Equipment Differential Mass (weight)*			Remarks Restrictions, Requirements
Code	Equipment	MASS, kg (lb.)			
		Front	Rear	Total	
RPO VK3	Front License Plate Mounting	4 (0.9)	0 (0)	4 (0.9)	
RPO V56	Deck Lid Luggage Rack (Black)	8 (1.8)	2.8 (6.2)	3.6 (8.0)	
RPO 711	'Corsica LT' Option	1.6 (3.5)	1.6 (3.5)	3.2 (7.0)	

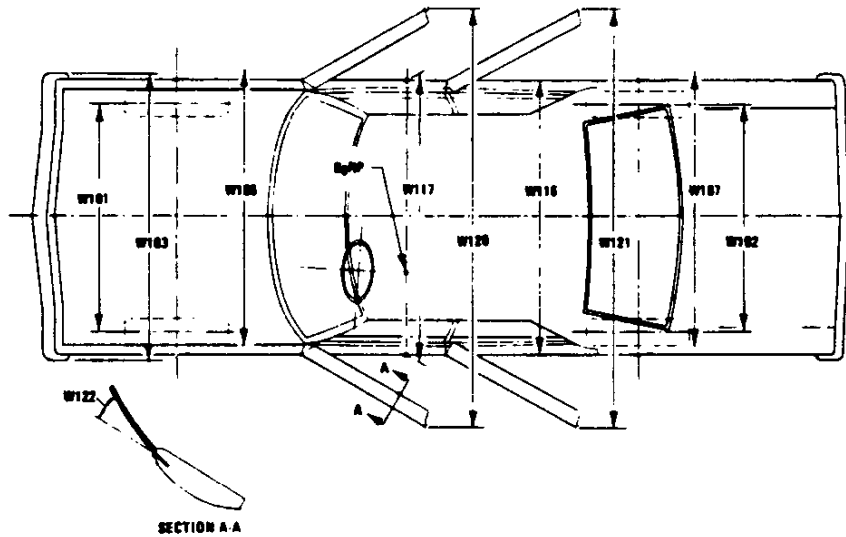
* Also see Engine - General Section for dressed engine mass (weight).

MVMA Specifications Form

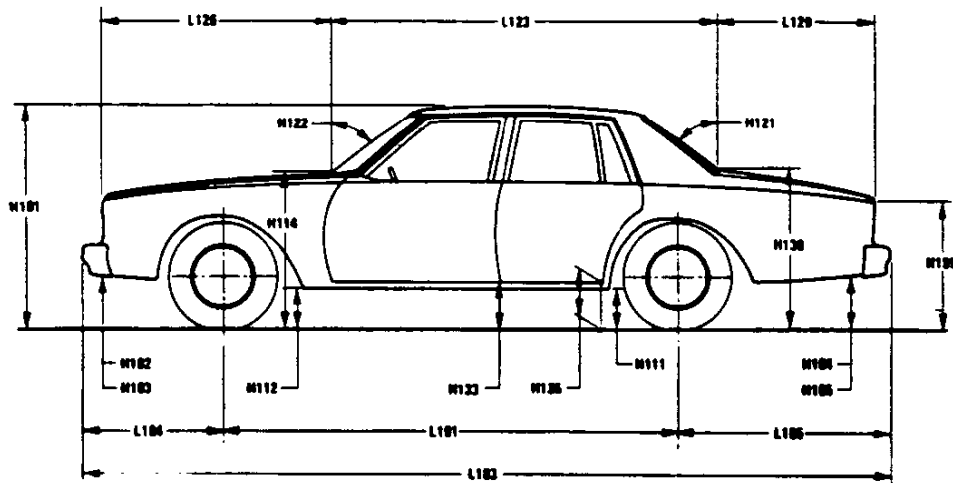
METRIC (U.S. Customary)

Exterior Vehicle And Body Dimensions - Key Sheet

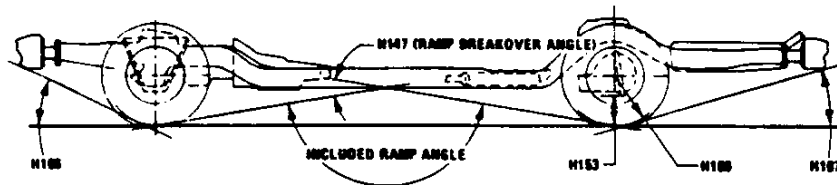
Exterior Width



Exterior Length & Height



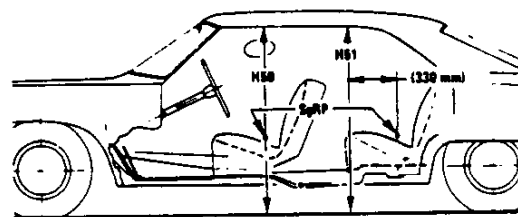
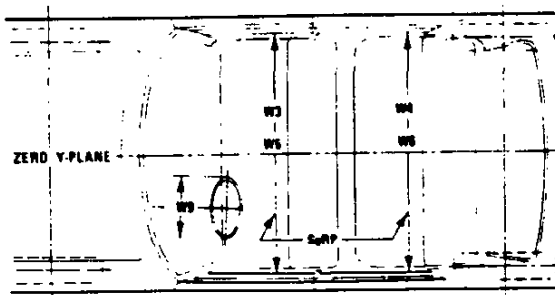
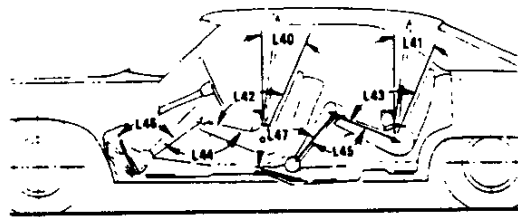
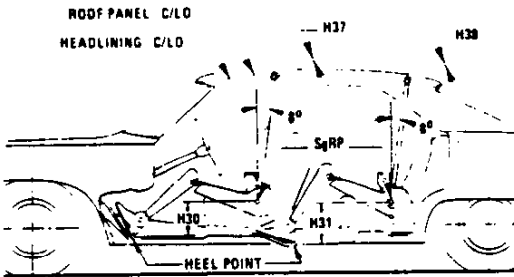
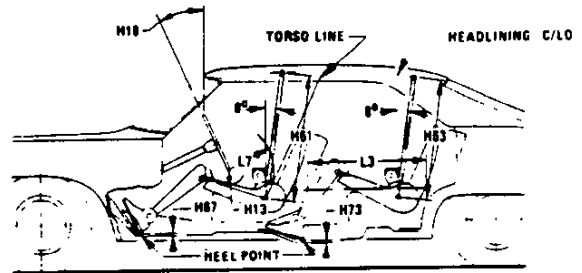
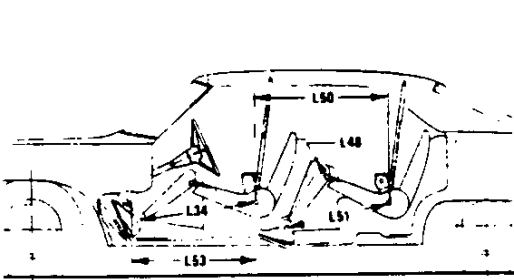
Exterior Ground Clearance



MVMA Specifications Form

METRIC (U.S. Customary)

Interior Vehicle And Body Dimensions - Key Sheet

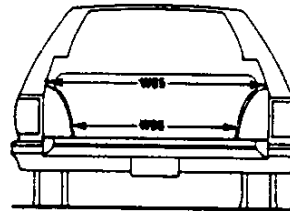
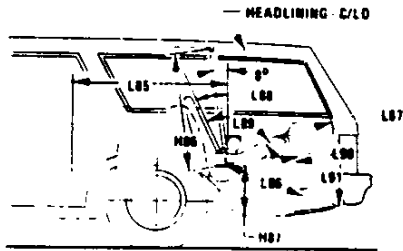


MVMA Specifications Form

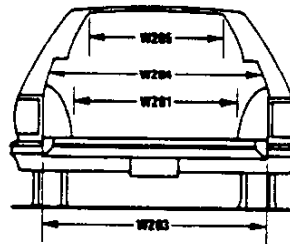
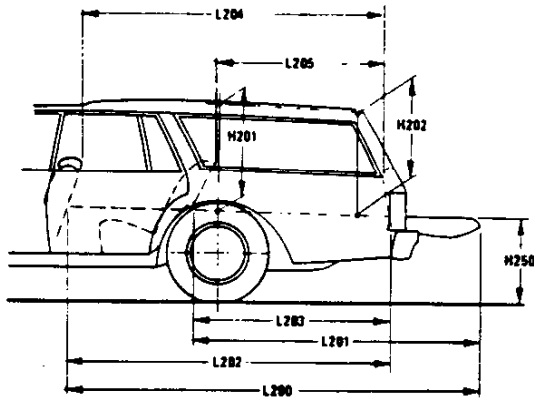
METRIC (U.S. Customary)

Interior Vehicle And Body Dimensions – Key Sheet

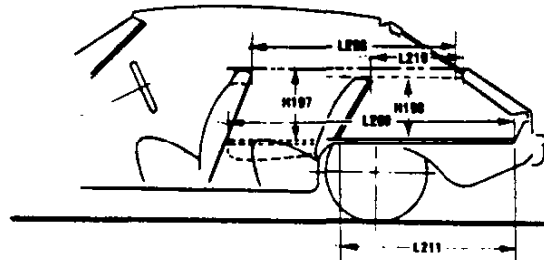
Third Seat



Cargo Space



Station Wagon



Hatchback

MVMA Specifications Form

METRIC (U.S. Customary)

Exterior Vehicle And Body Dimensions – Key Sheet Dimensions Definitions

Seating Reference Point

SEATING REFERENCE POINT means the manufacturer's design reference point which –

- (a) Establishes the rearmost normal design driving or riding position of each designated seating position in a vehicle;
- (b) Has coordinates established relative to the design vehicle structure.
- (c) Simulates the position of the pivot center of the human torso and thigh; and
- (d) Is the reference point employed to position the two dimensional templates described in SAE Recommended Practice J826, "Devices for Use in Defining and Measuring Vehicle Seating Accommodations."

Width Dimensions

- W101 TREAD–FRONT. The dimension measured between the tire centerlines at the ground.
- W102 TREAD–REAR. The dimension measured between the tire centerlines at the ground. In case of dual wheels, the dimension will be measured to the centerline of tire and wheel assemblies.
- W103 VEHICLE WIDTH. The maximum dimension measured between the widest point on the vehicle, excluding exterior mirrors, flexible mud flaps, marker lamps, but including bumpers, moldings, sheet metal protrusions or dual wheels, if standard equipment.
- W106 FRONT FENDER WIDTH. The dimension measured between the widest points at the front wheel centerline, excluding moldings.
- W107 REAR FENDER WIDTH. The dimension measured between the widest points at the rear wheel centerline, excluding moldings.
- W117 BODY WIDTH AT SgRP–FRONT. The dimension measured laterally between the widest points on the body at the SgRP-front, excluding door handles, applied moldings, or appliques.
- W120 VEHICLE WIDTH–FRONT DOORS OPEN. The dimension measured between the widest point on the front doors in maximum hold-open position.
- W121 VEHICLE WIDTH–REAR DOORS OPEN. The dimension measured between the widest point on the rear doors in maximum hold-open position. For vehicles with a rear door on only one side, this dimension is to the zero "Y" plane.
- W122 TUMBLE–HOME. STRAIGHT SIDE GLASS. The angle measured from a vertical to the outside surface of the front door glass at the SgRP "X" plane.
CURVED SIDE GLASS. The angle measured from a vertical to a chord extending from the upper DLO to the lower DLO at the outside surface of the front door glass at the front SgRP "X" plane.

Length Dimensions

- L101 WHEELBASE (WB). The dimension measured longitudinally between front and rear wheel centerlines. In case of dual rear axles, the dimension shall be to the midpoint of the centerlines of the rear wheels.
- L103 VEHICLE LENGTH. The maximum dimension measured longitudinally between the foremost point and the rearmost point on the vehicle, including bumper, bumper guards, tow hooks and/or rub strips, if standard equipment.
- L104 OVERHANG–FRONT. The dimension measured longitudinally from the centerline of the front wheels to the foremost point on the vehicle including bumper, bumper guards, tow hooks and/or rub strips, if standard equipment.
- L105 OVERHANG–REAR. The dimension measured longitudinally from the centerline of the rear wheels, or in the case

- L123 UPPER STRUCTURE LENGTH. The dimension measured longitudinally from the cowl point to the deck point.
- L125 COWL POINT "X" COORDINATE.
- L126 FRONT END LENGTH. The dimension measured longitudinally from the cowl point to the foremost point on the vehicle at the zero "Y" plane excluding ornamentation or bumpers. In cases where bumpers and/or grills are integrated with the profile, measurement is made at the foremost point of front end contour.
- L127 REAR WHEEL CENTERLINE "X" COORDINATE or in the case of dual rear axles, the coordinate shall be the midpoint of the distance between the rear axle centerlines
- L129 REAR END LENGTH. The dimension measured longitudinally from the deck point to the rearmost visible point of the body sheet metal at the zero "Y" plane, excluding ornamentation or bumpers.

Height Dimensions

- H101 VEHICLE HEIGHT. The dimension measured vertically from the highest point on the vehicle body to ground.
- H111 ROCKER PANEL–REAR TO GROUND. The dimension measured vertically from the bottom of the rocker or side quarter panel at the front of the rear wheel opening, excluding flanges, to ground.
- H112 ROCKER PANEL–FRONT TO GROUND. The dimension measured vertically from the foremost point on the bottom of the rocker panels, excluding flanges, to ground.
- H114 COWL POINT TO GROUND. Measured at zero "Y" plane.
- H121 BACKLIGHT SLOPE ANGLE. The angle between the vertical reference line and the surface of backlight at vehicle zero "Y" plane. For curve backlight, the angle is to chord of backlight arc from lower DLO to upper DLO.
- H122 WINDSHIELD SLOPE ANGLE. The angle between the vertical reference line and a chord of the windshield arc running from the lower DLO to the upper DLO at the vehicle zero "Y" plane. In the case of wrap over glass, the angle to be measured will be formed by a chord 457 mm (18.0 in) long drawn from the lower DLO to the intersecting point on the windshield.
- H133 BOTTOM OF DOOR CLOSED–FRONT TO GROUND. The dimension measured vertically from the bottom outside corner of the door on the lock pillar side, in maximum closed position, to ground.
- H135 BOTTOM OF DOOR CLOSED–REAR TO GROUND. The dimension measured vertically from the bottom outside corner of the door on the lock pillar side, in maximum closed position, to ground.
- H138 DECK POINT TO GROUND. Measured at zero "Y" plane.
- H109 STATIC LOAD–TIRE RADIUS–REAR. Specified by the manufacturer in accordance with composite TIRE SECTION STANDARD.

Ground Clearance Dimensions

- H102 FRONT BUMPER TO GROUND. The minimum dimension measured vertically from the lowest point on the front bumper to ground, including bumper guards, if standard equipment.
- H103 FRONT BUMPER TO GROUND–CURB MASS (WT.). Measured in the same manner as H102.

MVMA Specifications Form

METRIC (U.S. Customary)

Interior Vehicle And Body Dimensions - Key Sheet Dimensions Definitions

- H104 REAR BUMPER TO GROUND. The minimum dimension measured vertically from the lowest point on the rear bumper to ground, including bumper guards, if standard equipment.
- H105 REAR BUMPER TO GROUND - CURB MASS (WT.). Measured in the same manner as H104.
- H106 ANGLE OF APPROACH. The angle measured between a line tangent to the front tire static loaded radius arc and the initial point of structural interference forward of the front tire to ground. The limiting structural component shall be designated.
- H107 ANGLE OF DEPARTURE. The angle measured between a line tangent to the rear tire static loaded radius arc and the initial point of structural interference rearward of the rear tire to ground. The limiting component shall be designated.
- H147 RAMP BREAKOVER ANGLE. The angle measured between two lines tangent to the front and rear tire static loaded radius and intersecting at a point on the underside of the vehicle which defines the largest ramp over which the vehicle can roll.
- H153 REAR AXLE DIFFERENTIAL TO GROUND. The minimum dimension measured from the rear axle differential to ground.
- H156 MINIMUM RUNNING GROUND CLEARANCE. The minimum dimension measured from the sprung vehicle to ground. Specify location.

Glass Areas

- S1 Windshield area.
- S2 Side windows area. Includes the front door, rear door, vents, and rear quarter windows on both sides of the vehicle.
- S3 Backlight areas.
- S4 Total area. Total of all areas (S1 + S2 + S3).

Fiducial Mark Dimensions

- Fiducial Mark - Number 1**
- L54 "X" coordinate.
- W21 "Y" coordinate.
- H81 "Z" coordinate.
- H161 Height "Z" coordinate to ground at curb weight.
- H163 Height "Z" coordinate to ground.
- Fiducial Mark - Number 2**
- L55 "X" coordinate.
- W22 "Y" coordinate.
- W82 "Z" coordinate.
- H162 Height "Z" coordinate to ground at curb weight.
- H164 Height "Z" coordinate to ground.

Front Compartment Dimensions

- L7 STEERING WHEEL TORSO CLEARANCE. The minimum dimension measured in the side view from the rearmost edge of the steering wheel, with front wheels in the straight ahead position, to the torso line.
- L11 ACCELERATOR HEEL POINT TO STEERING WHEEL CENTER. The dimension measured horizontally from the AHP to the intersection of the steering column centerline and a plane tangent to the upper surface of the steering wheel rim.
- L17 DESIGN H-POINT-FRONT TRAVEL. The dimension measured horizontally between the design H-point-front in the foremost and rearmost seat track positions. (See SAE J1100)
- L23 NORMAL DRIVING AND RIDING SEAT TRACK TRAVEL. The dimension measured horizontally between a point on the design H-point travel line from the SgRP to the displaced point on the design H-point travel line with the seat moved to the foremost seat position, but not to include seat track travel used for purposes other than normal driving and riding positions. (See SAE J1100)

- L31 SgRP-FRONT. "X" COORDINATED.
- L34 MAXIMUM EFFECTIVE LEG ROOM-ACCELERATOR. The dimension measured along a line from the ankle pivot center to the SgRP-front plus 254 mm (10.0 in) measured with right foot on the undepressed accelerator pedal. For vehicles with SgRP to heel (H30) greater than 18 in., the accelerator pedal may be depressed as specified by the manufacturer. If the accelerator is depressed, the manufacturer shall place foot flat on pedal and note the depression of the pedal.
- L-40 BACK ANGLE-FRONT. The angle measured between a vertical line through the SgRP-front and the torso line. If the seatback is adjustable, use the normal driving and riding position specified by the manufacturer.
- L-42 HIP ANGLE-FRONT. The angle measured between torso line and thigh centerline.
- L44 KNEE ANGLE-FRONT. The angle measured between thigh centerline and lower leg centerline measured on the right leg.
- L46 FOOT ANGLE-FRONT. The angle measured between the lower leg centerline and a line tangent to the ball and heel of the bare foot flesh line measured on the right leg. Ref SAE J826.
- L53 SgRP-FRONT TO HEEL. The dimension measured horizontally from the SgRP-front to the accelerator heel point.
- W3 SHOULDER ROOM-FRONT. The minimum dimension measured laterally between the trimmed surfaces on the "X" plane through the SgRP-front at height between the belt line and 254 mm (10.0 in.) above the SgRP-front, excluding the door assist strap and attaching parts.
- W5 HIP ROOM-FRONT. The minimum dimension measured laterally between the trimmed surfaces on the "X" plane through the SgRP-front within 25 mm (1.0 in.) below and 76 mm (3.0 in.) above the SgRP-front and 76 mm (3.0 in.) fore and aft of the SgRP-front.
- W9 STEERING WHEEL MAXIMUM OUTSIDE DIAMETER. Define if other than round.
- H13 STEERING WHEEL TO CENTERLINE OF THIGH. The minimum dimension measured from the bottom of steering wheel, with front wheels in the straight position, to the thigh centerline.
- H17 ACCELERATOR HEEL POINT TO THE STEERING WHEEL CENTER. The dimension measured vertically from the AHP-front to the intersection of the steering column centerline to a plane tangent to the upper surface of the steering wheel rim.
- H18 STEERING WHEEL ANGLE. The angle measured from a vertical to the surface plane of the steering wheel.
- H30 SgRP-FRONT TO HEEL. The dimension measured vertically from the SgRP-front to the accelerator heel point.
- H37 HEADLINING TO ROOF PANEL-FRONT. The dimension measured from the intersection of the headlining and the extended effective head room line normal to the sheet metal.
- H50 UPPER BODY OPENING TO GROUND-FRONT. The dimension measured vertically from the trimmed body opening to the ground on the SgRP-front "X" plane.
- H61 EFFECTIVE HEAD ROOM-FRONT. The dimension measured along a line 8 deg. rear of vertical from the SgRP-front to the headlining plus 102 mm (4.0 in.).
- H67 FLOOR COVERING THICKNESS-UNDEPRESSED-FRONT. The dimension measured vertically from the surface of the undepressed floor covering to the underbody sheet metal at the accelerator heel point.

Rear Compartment Dimensions

- L3 COMPARTMENT ROOM-SECOND. The dimension measured horizontally from the back of the front seat to the front of the second seatback at a height tangent to the top of the second seat cushion.

MVMA Specifications Form

METRIC (U.S. Customary)

Interior Vehicle And Body Dimensions - Key Sheet Dimensions Definitions

- L-41 BACK ANGLE-SECOND. The angle measured between a vertical line through the SgRP-second and the torso line.
- L43 HIP ANGLE-SECOND. The angle measured between torso line and thigh centerline.
- L45 KNEE ANGLE-SECOND. The angle measured between thigh centerline and lower leg centerline.
- L47 FOOT ANGLE-SECOND. The angle measured between the lower leg centerline and a line tangent to the ball and heel of the three-dimensional devices bare foot flesh line (Reference J826).
- L48 KNEE CLEARANCE-SECOND. The minimum dimension measured from the knee pivot center to the back of the front seatback minus 51 mm (2.0 in.).
- L50 SgRP COUPLE DISTANCE-SECOND. The dimension measured horizontally from the driver SgRP-front to the SgRP-second.
- L51 MINIMUM EFFECTIVE LEG ROOM-SECOND. The dimension measured along a line from the ankle pivot center to the SgRP-second plus 254mm (10.0 in.).
- W4 SHOULDER ROOM-SECOND. The minimum dimension measured laterally between door or quarter trimmed surfaces on the "X" plane through the SgRP-second at height between 254-406 mm (10.0-16.0 in.) above the SgRP-second, excluding the door assist straps and attaching parts.
- W6 HIP ROOM-SECOND. Measured in the same manner as W5.
- H31 SgRP-SECOND TO HEEL. The dimension measured vertically from the SgRP-second to the two dimensional device heel point on the depressed floor covering.
- H38 HEADLINING TO ROOF PANEL-SECOND. The dimension measured from the intersection of the headlining and the extended effective head room line normally to the roof sheet metal.
- H51 UPPER BODY OPENING TO GROUND-SECOND. The dimension measured vertically from the trimmed body opening to the ground on the "X" plane 330 mm (13.0 in.) forward of the SgRP-second.
- H63 EFFECTIVE HEAD ROOM-SECOND. The dimension measured along a line 8 deg. rear of vertical from the SgRP to the headlining, plus 102 mm (4.0 in.).
- H73 FLOOR COVERING-DEPRESSED-SECOND. The dimension measured vertically from the heel point to the underbody sheet metal.

Luggage Compartment Dimensions

- V1 USABLE LUGGAGE CAPACITY-Total of volumes of individual pieces of standard luggage set plus H-boxes stowed in the luggage compartment in accordance with the procedure described in paragraph 8.2 of SAE-J1100a.
- H195 LIFTOVER HEIGHT. The dimension measured vertically from the luggage compartment lower opening at the zero "Y" plane to ground.

Interior Volumes (EPA Classification)

The Interior Volume Index is listed for each body style except two seaters. The interior volume index estimates the space in a car. It is based on four measurements - head room, shoulder room, hip room, and leg room - for the front and rear seats, plus trunk capacity. The interior volume index is an estimate of the size of the passenger compartment.

The Trunk/Cargo Index is an estimate of the size of the trunk/cargo space. In station wagons and hatchbacks it is an estimate of the space behind the second seat.

Station Wagon - Third Seat Dimensions

- L85 SgRP COUPLE DISTANCE-THIRD. The dimension measured horizontally from the SgRP-second to the SgRP-third.
- L86 EFFECTIVE LEG ROOM-THIRD. The dimension measured along a line from the ankle pivot center to the SgRP-third plus 254 mm (10.0 in.).
- L87 KNEE CLEARANCE-THIRD. The minimum dimension from the knee pivot center to the back of second seatback minus a constant of 51mm (2.0 in.). With rear-facing third seat, dimension is measured to closure.
- L88 BACK ANGLE-THIRD. Measured in the same manner as L41.
- L89 HIP ANGLE-THIRD. Measured in the same manner as L43.
- L90 KNEE ANGLE-THIRD. Measured in the same manner as L45.
- L91 FOOT ANGLE-THIRD. Measured in the same manner as L47.
- W85 SHOULDER ROOM-THIRD. Measured in the same manner as W4.
- W86 HIP ROOM-THIRD. Measured in the same manner as W5.
- H86 EFFECTIVE HEAD ROOM-THIRD. The dimension, measured along a line 8 deg. from the SgRP-third to the headlining rear of vertical plus a constant of 102 mm (4.0 in.).
- H87 SgRP-THIRD TO HEEL POINT.
- SD1 SEAT FACING DIRECTION-THIRD.

Station Wagon - Cargo Space Dimensions

- L200 CARGO LENGTH-OPEN-FRONT. The minimum dimension measured longitudinally from the back of the front seatback at the height of the undepressed floor covering to the rearmost point on the undepressed floor covering on the open tailgate or cargo surface if the rear closure is a conventional door type tailgate at the zero "Y" plane.
- L201 CARGO LENGTH-OPEN-SECOND. The dimension measured longitudinally from the back of the second seatback at the height of the undepressed floor covering to the rearmost point on the undepressed floor covering on the open tailgate or cargo floor surface if the rear closure is a conventional door type tailgate, at the zero "Y" plane.
- L202 CARGO LENGTH-CLOSED-FRONT. The minimum dimension measured horizontally from the back of the front seat at the height of the undepressed floor covering to the rearmost point on the undepressed floor covering on the closed tailgate or taildoor for station wagons, trucks and mpv's at the zero "Y" plane.
- L203 CARGO LENGTH-CLOSED-SECOND. The dimension measured horizontally from the back of the second seat at the height of the undepressed floor covering to the rearmost point on the undepressed floor covering on the closed tailgate or taildoor for station wagons, trucks and mpv's at the zero "Y" plane.
- L204 CARGO LENGTH AT BELT-FRONT. The minimum dimension measured horizontally from the back of the front seatback at the seatback top to the foremost normal surface of the closed tailgate or inside surface of the cab backpanel at the height of the belt, on the zero "Y" plane.
- L205 CARGO LENGTH AT BELT-SECOND. The minimum dimension measured horizontally from the back of the second seatback at the seatback top to the foremost normal surface of the closed tailgate at the height of the belt, on the zero "Y" plane.
- W201 CARGO WIDTH-WHEELHOUSE. The minimum dimension measured laterally between the trimmed wheelhouings at floor level. For any vehicle not trimmed, measure to the sheet metal.

MVMA Specifications Form

METRIC (U.S. Customary)

Interior Vehicle And Body Dimensions – Key Sheet Dimensions Definitions

- W203 REAR OPENING WIDTH AT FLOOR.** The minimum dimension measured laterally between the limiting interferences of the rear opening at floor level.
- W204 REAR OPENING WIDTH AT BELT.** The minimum dimension measured laterally between the limiting interferences of the rear opening at belt height or top of pick up box.
- W205 REAR OPENING WIDTH ABOVE BELT.** The minimum dimension measured laterally between the limiting interferences of the rear opening above the belt height.
- H197 FRONT SEATBACK TO LOAD FLOOR HEIGHT.** The dimension measured vertically from the horizontal tangent to the top of the seatback to the undepressed floor covering.
- H201 CARGO HEIGHT.** The dimension measured vertically from the top of the undepressed floor covering to the headlining at the rear wheel "X" coordinate on the zero "Y" plane.
- H202 REAR OPENING HEIGHT.** The dimension measured vertically from the top of the undepressed floor covering to the upper trimmed opening on the zero "Y" plane with rear door fully open.
- H250 TAILGATE TO GROUND CURB MASS (WT.).** The dimension measured vertically from the top of the undepressed floor covering on the lowered tailgate to ground on the zero "Y" plane.
- V2 STATION WAGON**
Measured in inches:

$$\frac{W4 \times H201 \times L204}{1728} = \text{ft}^3$$
 Measured in mm:

$$\frac{W4 \times H201 \times L204}{10^9} = \text{m}^3 \text{ (cubic meter)}$$
- V4 HIDDEN LUGGAGE CAPACITY-REAR OF FRONT SEAT.** The total volumes of individual pieces of one set of standard luggage stowed in any hidden cargo area below the load floor rear of the front seat.
- V5 TRUCKS AND MPV'S WITH OPEN AREA.**
Measured in inches:

$$\frac{L506 \times W500 \times H503}{1728} = \text{ft}^3$$
 Measured in mm:

$$\frac{L506 \times W500 \times H503}{10^9} = \text{m}^3 \text{ (cubic meter)}$$
- V6 TRUCKS AND MPV'S WITH CLOSED AREA.**
Measured in inches:

$$\frac{L204 \times W500 \times H505}{1728} = \text{ft}^3$$
 Measured in mm:

$$\frac{L204 \times W500 \times H505}{10^9} = \text{m}^3 \text{ (cubic meter)}$$
- V8 HIDDEN LUGGAGE CAPACITY-REAR OF SECOND SEAT.** The total volume of individual pieces of one set of standard luggage stowed in any hidden cargo area below the load floor rear of the second seat.
- V10 STATION WAGON CARGO VOLUME INDEX.**
Measured in inches:

$$\frac{H201 \times L205 \times \frac{W4 + W201}{2}}{1728} = \text{ft}^3$$
 Measured in mm:

$$\frac{H201 \times L205 \times \frac{W4 + W201}{2}}{10^9} = \text{m}^3 \text{ (cubic meter)}$$

Hatchback – Cargo Space Dimensions

All hatchback cargo dimensions are to be taken with the front seat in full down and rear position, and the rear seat folded down. The hatchback door is in the closed position. (For electrically adjusted seats, see the manufacturer's specifications for Design "H" Point).

- L208 CARGO LENGTH AT FRONT SEATBACK HEIGHT.** The minimum horizontal dimension from the "X" plane tangent to the rearmost surface of the driver's seatback to the inside limiting interference of the hatchback door on the vehicle zero "Y" plane.
- L209 CARGO LENGTH AT FLOOR-FRONT-HATCHBACK.** The minimum horizontal dimension measured at floor level from the rear of the front seatback to the normal limiting interference of the hatchback door on the vehicle zero "Y" plane.
- L210 CARGO LENGTH AT SECOND SEATBACK HEIGHT-HATCHBACK.** The minimum dimension measured from the "X" plane tangent to the rearmost surface of second seatback or the load floor which is stowed at least one half of the H198 dimension height above the rear load floor, to the rearmost inside limiting interference on the zero "Y" plane.
- L211 CARGO LENGTH AT FLOOR-SECOND HATCHBACK.** The minimum horizontal dimension measured at floor level from the rear of the second seatback or load floor panel to the normal limiting interference of the hatchback door on the vehicle zero "Y" plane.
- H197 FRONT SEATBACK TO LOAD HEIGHT.** The dimension measured vertically from the horizontal tangent to the top of the seatback to the undepressed floor covering.
- H198 SECOND SEATBACK TO LOAD FLOOR HEIGHT:** The dimension measured vertically from the second seat back to the undepressed floor covering.
- V3 HATCHBACK.**
Measured in inches:

$$\frac{\frac{L208 + L209}{2} \times W4 \times H197}{1728} = \text{ft}^3$$
 Measured in mm:

$$\frac{\frac{L208 + L209}{2} \times W4 \times H197}{10^9} = \text{m}^3 \text{ (cubic meter)}$$
- V4 HIDDEN LUGGAGE CAPACITY-REAR OF FRONT SEAT.** The total volumes of individual pieces of one set of standard luggage stowed in any hidden cargo area below the load floor rear of the front seat.
- V11 HATCHBACK CARGO VOLUME INDEX.** Usable luggage (one (1) stand and luggage set) below floor:
Measured in inches:

$$\frac{\frac{L210 + L211}{2} \times W4 \times H198}{1728} = \text{ft}^3$$
 Measured in mm:

$$\frac{\frac{L210 + L211}{2} \times W4 \times H198}{10^9} = \text{m}^3 \text{ (cubic meter)}$$

MVMA Specifications Form

METRIC (U.S. Customary)

Index

Subject	Page No.
Aerodynamics	23
All Wheel Drive	10
Alternator	16
Automatic Transmission / Transaxle	8, 9
Axis, Steering	14
Axle, Drive, Front, Rear, All, Four	2, 9, 10
Axle Shafts	10
Battery	16
Body and Miscellaneous Information	17
Brakes—Parking, Service	12, 13
Camber	15
Camshaft	3
Capacities	
Cooling System	5
Fuel Tank	6
Lubricants	
Engine Crankcase	4
Transmission / Transaxle	8, 9
Rear Axle	10
Carburetor	2, 6
Caster	15
Clutch — Pedal Operated	8
Coil, Ignition	16
Connecting Rods	4
Convenience Equipment	19-20
Cooling System	5
Crankshaft	4
Cylinders and Cylinder Head	3
Diesel Information	4
Dimension Definitions	
Key Sheet — Exterior	27, 30, 31
Key Sheet — Interior	28, 29, 31, 32, 33
Electrical System	15, 16
Emission Controls	7
Engine — General	
Bore, Stroke, Type	3
Compression Ratio	2
Displacement	2, 3
Firing Order, Cylinder Numbering	3
General Information, Power & Torque	2
Intake System	4
Power Teams	2
Exhaust System	7
Equipment Availability, Convenience	19
Fan, Cooling	5
Filters — Engine Oil, Fuel System	4
Four Wheel Drive	10
Frame	18
Front Suspension	11
Front Wheel Drive Unit	10
Fuel System	6
Fuel Injection	6
Fuel Tank	6
Glass	18
Headlamps	18
Headroom — Body	22, 23
Heights	21
Horns	15
Horsepower — Brake	2
Ignition System	16
Inflation — Tires	13
Interior Volumes	22
Instruments	15
Legroom	22, 23
Lengths	21
Leveling, Suspension	11
Lifters, Valve	4
Linings — Clutch, Brake	8, 12
Lubrication — Engine Transmission / Transaxle	4, 8, 9
Luggage Compartment	22
Models	1
Motor Starting	16
Muffler	7

Subject	Page No.
Origin	1
Passenger Capacity	1
Passenger Mass Distribution	25
Pistons	3
Power Brakes	12
Power, Engine	2
Power Steering	14
Power Teams	2
Propeller Shaft, Universal Joints	10
Pumps — Fuel	6
Water	5
Radiator — Cap, Hoses, Core	5
Ratios — Axle, Transaxle	2, 9
Compression	2
Steering	14
Transmission / Transaxle	2, 8, 9
Rear Axle	2, 9, 10
Regulator — Alternator	16
Restraint System	18
Rims	13
Rods — Connecting	4
Scrub Radius	14
Seats	17
Shock Absorbers, Front & Rear	11
Spark Plugs	16
Speedometer	15
Springs — Front & Rear Suspension	11
Stabilizer (Sway Bar) — Front & Rear	11
Starting System	16
Steering	14
Suppression — Ignition, Radio	16
Suspension — Front & Rear	11
Tail Pipe	7
Theft Protection	20
Thermostat, Cooling	5
Tires	13
Toe-In	15
Torque Converter	9
Torque — Engine	2, 8, 9
Transaxle	9
Transmission — Types	2, 8, 9
Transmission — Automatic	2, 8, 9
Transmission — Manual	2, 8, 9
Transmission — Ratios	2, 9
Tread	21
Trunk Cargo Load	1
Trunk Luggage Capacity	22
Turning Diameter	14
Unitized Construction	18
Universal Joints, Propeller Shaft	10
Valve System	4
Vehicle Dimensions	
Width	21
Length	21
Height	21
Ground Clearance	21
Front Compartment	22
Rear Compartment	22
Luggage Compartment	22
Station Wagon — Third Seat	23
Station Wagon — Cargo Space	23
Hatchback — Cargo Space	23
Fiducial Marks	24
Voltage Regulator	16
Water Pump	5
Weights	25, 26
Wheel Alignment	15
Wheelbase	21
Wheels & Tires	13
Wheel Spindle	14
Widths	21
Windshield	18
Windshield Wiper and Washer	15

