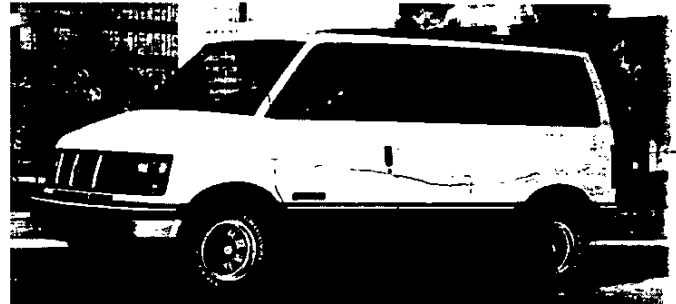
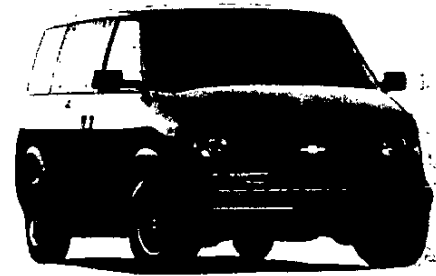


ASTRO/SAFARI PASSENGER VAN




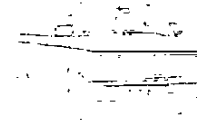
CONTENTS

	<u>Page</u>
MODELS	2
ASTRO CS/SAFARI SLX (ZW9) TRIM	3
ASTRO CL/SAFARI SLE (RPO YC6) TRIM	4
ASTRO LT/SAFARI SLT (RPO YC7) TRIM	5
POWERTRAINS	6
STANDARD SUSPENSION	8
OPTIONAL SUSPENSION	9
WHEELS AND TIRES	10
STEERING/BRAKES	11
ELECTRICAL	12
COOLING	13
DIMENSIONS	14
OPTIONS	15
COLOR COMBINATIONS	17
EXTERIOR COLORS	B
INTERIOR TRIM	C
SEATS	D
TRAILERING	E

ASTRO/SAFARI PASSENGER VAN

KEY: **R** Indicates Not Available in California **B** Bold Print Indicates Not Available w/High Altitude Emissions

TWO-WHEEL DRIVE PASSENGER VAN

ASTRO/SAFARI PASSENGER VAN	WB (IN.)	GVWR (LBS.)	MAX. PAYLOAD (LBS.)	PASS. CAP. STD/OPT	STD ENGINE/TRANS	OPT ENGINE/TRANS	MODEL NUMBER
	111	5600	1012	5 7 8	4.3L V6/A4	4.3L V6/A4 (LU2)	M10906
ASTRO/SAFARI EXTENDED PASSENGER VAN	WB (IN.)	GVWR (LBS.)	MAX. PAYLOAD (LBS.)	PASS. CAP. STD/OPT	STD ENGINE/TRANS	OPT ENGINE/TRANS	MODEL NUMBER
	111	5850	1297	5 7 8	4.3L V6/A4	4.3L V6/A4 (LU2)	M11006

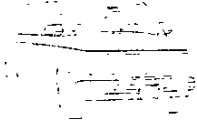
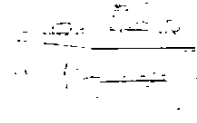
ASTRO/SAFARI PASSENGER VAN

The Astro/Safari Passenger Van is the standard passenger van model. It is offered in a 5600-lb. GVWR with a choice of seating configurations.

ASTRO/SAFARI EXTENDED PASSENGER VAN

The Astro/Safari Extended Passenger Van retains the same 111-in. wheelbase as the regular-length model, while adding 10-inches to the rear frame for increased cargo capacity.

ALL-WHEEL DRIVE PASSENGER VAN

ASTRO/SAFARI ALL-WHEEL DRIVE PASSENGER VAN	WB (IN.)	GVWR (LBS.)	MAX. PAYLOAD (LBS.)	PASS. CAP. STD/OPT	STD ENGINE/TRANS	OPT ENGINE/TRANS	MODEL NUMBER
	111	5800	890	5 7 8	4.3L V6/A4	—	L10906
	111	5950	1035	5 7 8	4.3L V6/A4	—	L10906/C6M
ASTRO/SAFARI ALL-WHEEL DRIVE PASSENGER VAN/EXTENDED VAN	WB (IN.)	GVWR (LBS.)	MAX. PAYLOAD (LBS.)	PASS. CAP. STD/OPT	STD ENGINE/TRANS	OPT ENGINE/TRANS	MODEL NUMBER
	111	6100	1120	5 7 8	4.3L V6/A4	—	L11006

ASTRO/SAFARI ALL-WHEEL DRIVE PASSENGER VAN

The Astro/Safari All-Wheel Drive Passenger Van offers 5800-lb. GVWR with full-time All-Wheel Drive.

ASTRO/SAFARI ALL-WHEEL DRIVE EXTENDED PASSENGER VAN

The Astro/Safari All-Wheel Drive Passenger Van/Extended Van retains the same 111-in. wheelbase as the regular-length model, while adding 10-inches to the rear frame for increased cargo capacity.

*Based on model weight. Total available for equipment and cargo.

ASTRO/SAFARI PASSENGER VAN SEATING ARRANGEMENTS

STANDARD: 5-PASSENGER (ZP5)

Includes high-back front bucket seats and a standard 3-passenger bench seat. With YC7 trim, includes reclining front bucket seats and split-back reclining 3-passenger bench seat with folding armrests.

OPTIONAL: 7-PASSENGER (RPO ZP7)

Includes four high-back bucket seats and a 3-passenger bench seat. Also includes A78 reclining seat backs on bucket seats. With YC7 trim, includes four reclining bucket seats (2 front and 2 center), and a split-back reclining 3-passenger bench seat with folding armrests.

OPTIONAL: 8-PASSENGER (RPO ZP8)

Includes two high-back buckets and two 3-passenger bench seats. With YC7 trim, includes two reclining bucket seats and two split-back reclining 3-passenger bench seats with folding armrests.

ASTRO/SAFARI PASSENGER VAN TRIM LEVELS

CS/SLX

The CS/SLX trim level is the standard trim level available in the Astro/Safari Passenger Van line. It offers a high level of equipment designed to meet the needs of compact passenger van prospects.

CL/SLE (RPO YC6)

The optional CL/SLE trim level offers increased comfort and convenience features compared to the standard CS/SLX trim level.

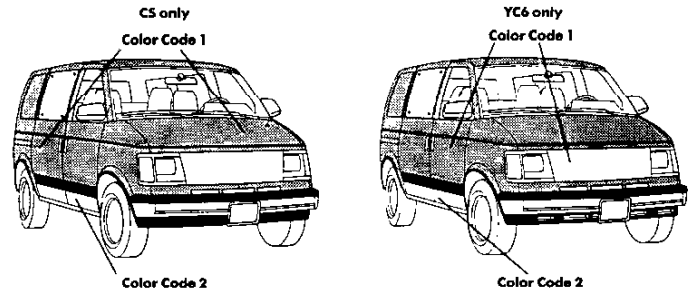
LT/SLT (RPO YC7)

The optional LT/SLT trim level emphasizes luxury and style. It is the top-of-the-line trim level for the buyer demanding maximum comfort and convenience in a compact passenger van.

CUSTOM TWO-TONE (ZY6)

WITHOUT BYP ASTRO/SAFARI GT SPORT PACKAGE

Custom two-tone paint (ZY6) is available on all models (except on Astro LT/Safari SLT). Color code 1 is applied to the area above the bodyside molding, and Color code 2 is applied to the areas below the bodyside molding. Below are the interior trim color and exterior paint combinations recommended by Chevrolet/GMC. The only available Color code 1/Color code 2 exterior color combinations are those shown in the chart below, however any available interior trim color may be ordered. For further information, refer to Seats and Interior Trim as well as the Order Guide.



KEY: —Not Available

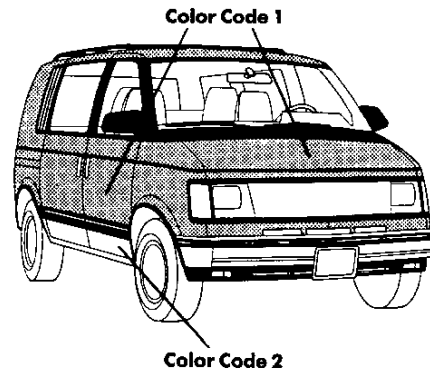
EXTERIOR COLORS		STRIPE COLORS	INTERIOR COLORS				WHEEL COLORS*	
COLOR 1	COLOR 2		Blue	Garnet	Saddle	Slate Gray	Aluminum	Rally
10 Ivory White	98 Midnight Blue Met.	—	•				S	S
	34 Sunset Gold Met.	—			•		G	G
15 Sterling Silver Met.	98 Midnight Blue Met.	—	•				S	S
	77 Burnt Red Met.	—		•		•	S	S
20 Onyx Black	34 Sunset Gold Met.	—			•		G	G
	15 Sterling Silver Met.	—		•		•	S	S
27 Smoke Blue Met.	98 Midnight Blue Met.	—	•				B	S
33 Mojave Beige	34 Sunset Gold Met.	—		•			G	G
34 Sunset Gold Met.	20 Onyx Black	—			•		G	G
75 Deep Red Met.	77 Burnt Red Met.	—		•		•	S	S
	15 Sterling Silver Met.	—		•		•	S	S
77 Burnt Red Met.	34 Sunset Gold Met.	—		•		•	S	S
	15 Sterling Silver Met.	—		•		•	S	S
83 Gray Met.	15 Sterling Silver Met.	—		•		•	S	S
98 Midnight Blue Met.	15 Sterling Silver Met.	—	•			•	S	S

*Wheel Color Legend: S-Silver, G-Gold, B-Lt. Blue

WITH BYP ASTRO/SAFARI GT SPORT PACKAGE

Below are the interior and exterior paint combinations recommended by Chevrolet/GMC, however any available interior trim color may be ordered. For further information, refer to Seats and Interior Trim as well as the Ordering Guide.

KEY: —Not Available

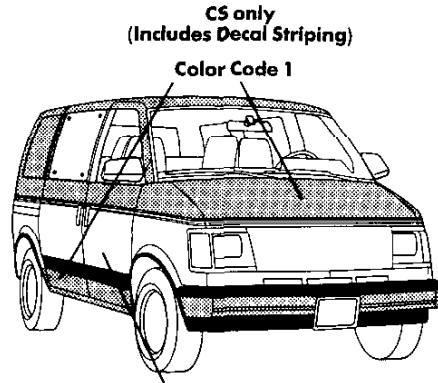


EXTERIOR COLORS		STRIPE COLORS	INTERIOR COLORS				WHEEL COLORS*	
COLOR 1	COLOR 2		Blue	Garnet	Saddle	Slate Gray	Aluminum	Rally
10 Ivory White	20 Onyx Black	—				•	W	S
15 Sterling Silver Met.	20 Onyx Black	—				•	S	S
27 Smoke Blue Met.	20 Onyx Black	—	•				B	S
34 Sunset Gold Met.	20 Onyx Black	—			•		G	G
75 Burnt Red Met.	20 Onyx Black	—		•			S	S

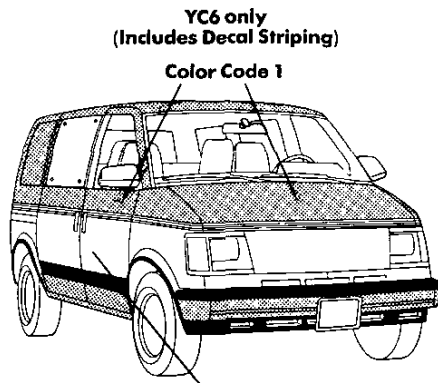
*Wheel Color Legend: S-Silver, G-Gold, B-Lt. Blue, W-White

**DELUXE
TWO-TONE
(ZY4)**

Deluxe two-tone paint (ZY4) is available on all models (except Astro LT/Safari SLT). Color code 1 is applied to the areas above the decal striping and below the bodyside molding. Color code 2 is applied to the area in between bodyside molding and decal. Below are the interior trim color and exterior paint combinations recommended by Chevrolet/GMC. The only available color code 1/color code 2 exterior color combinations are those shown in the chart below, however, any available interior trim color may be ordered. For further information, refer to Seats and Interior Trim pages as well as the Ordering Guide.



Color Code 2



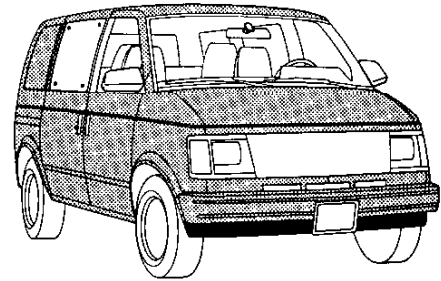
Color Code 2

EXTERIOR COLORS		STRIPE COLORS	INTERIOR COLORS				WHEEL COLORS*	
COLOR 1	COLOR 2		Blue	Garnet	Saddle	Slate Gray	Aluminum	Rally
10 Ivory White	98 Midnight Blue Met.	Silver/Blue/Silver	•				S	S
	34 Sunset Gold Met.	Black/Orange/Black			•		G	G
15 Sterling Silver Met.	98 Midnight Blue Met.	Silver/Blue/Silver	•				S	S
	77 Burnt Red Met.	Black/Red/Black		•		•	S	S
20 Onyx Black	34 Sunset Gold Met.	Black/Orange/Black			•		G	G
	15 Sterling Silver Met.	Black/Red/Black		•		•	S	S
27 Smoke Blue Met.	98 Midnight Blue Met.	Silver/Blue/Silver	•				B	S
33 Mojave Beige	34 Sunset Gold Met.	Black/Orange/Black		•	•		G	G
34 Sunset Gold Met.	20 Onyx Black	Black/Gold/Black			•		G	G
75 Deep Red Met.	77 Burnt Red Met.	Black/Red/Black		•		•	S	S
	15 Sterling Silver Met.	Black/Red/Black		•		•	S	S
77 Burnt Red Met.	34 Sunset Gold Met.	Black/Gold/Black		•	•		S	S
	15 Sterling Silver Met.	Black/Red/Black		•		•	S	S
83 Gray Met.	15 Sterling Silver Met.	Black/Red/Black		•		•	S	S
98 Midnight Blue Met.	15 Sterling Silver Met.	Silver/Blue/Silver	•			•	S	S

*Wheel Color Legend: S-Silver, G-Gold, B-Lt. Blue

**SOLID
COLORS
(ZY1)**

WITHOUT LUXURY TOURING PACKAGE



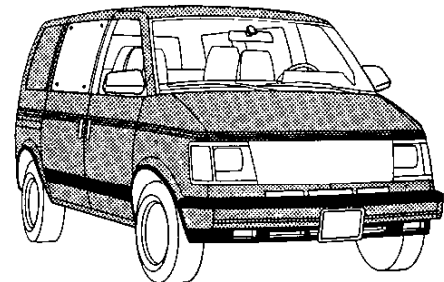
Solid paint (ZY1) is standard on all models. All painted areas of the body and front end sheet metal, including the bumpers, are the same color. Below are the interior trim color and exterior paint combinations recommended by Chevrolet/GMC, however any available interior trim color may be ordered. For further information, refer to Seats and Interior Trim pages as well as the Ordering Guide.

KEY: —Not Available

EXTERIOR COLORS		STRIPE COLORS	INTERIOR COLORS				WHEEL COLORS*	
COLOR 1	COLOR 2		Blue	Garnet	Saddle	Slate Gray	Aluminum	Rally
10 Ivory White	—	—	•	—	—	—	W	S
	—	—	—	•	—	—	W	S
	—	—	—	—	•	—	W	G
	—	—	—	—	—	•	S	S
15 Sterling Silver Met.	—	—	•	•	—	•	S	S
20 Onyx Black	—	—	—	•	—	•	S	S
	—	—	—	—	•	—	G	G
27 Smoke Blue Met.	—	—	•	—	—	•	B	S
33 Mojave Beige	—	—	—	•	•	—	G	G
34 Sunset Gold Met.	—	—	—	—	•	—	G	G
75 Deep Red Met.	—	—	—	•	—	•	S	S
77 Burnt Red Met.	—	—	—	•	•	•	S	S
83 Gray Met.	—	—	—	•	—	•	S	S
98 Midnight Blue Met.	—	—	•	—	—	•	S	S

*Wheel Color Legend: S-Silver, G-Gold, B-Lt. Blue, W-White

**WITH LUXURY TOURING
PACKAGE (YC7) ONLY
(Includes Decal Striping)**



Below are the interior trim color and exterior paint combinations recommended by Chevrolet/GMC. They are the only available interior and exterior combinations allowed. For further information, refer to Seats and Interior Trim pages as well as the Ordering Guide.

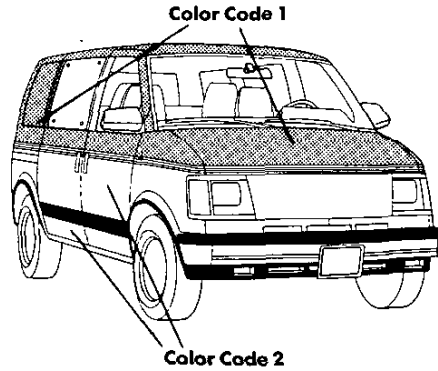
KEY: —Not Available

EXTERIOR COLORS		STRIPE COLORS	INTERIOR COLORS		WHEEL COLORS*	
COLOR 1	COLOR 2		Blue	Saddle	Aluminum	Rally
30 Catalina Blue Met.	—	Lt. Blue/Med. Blue Met.	•	—	B	S
68 Caramel Brown Met.	—	Lt. Brown/Dk. Brown Met.	—	•	G	G

*Wheel Color Legend: S-Silver, G-Gold, B-Lt. Blue

SPECIAL TWO-TONE (ZY3) (Includes Decal Striping)

Special two-tone paint (ZY3) is available with the Luxury Touring Package (YC7) only. It includes a dual color decal stripe. Color code 1 is applied to the areas above the belt styling crease line. Color code 2 is applied to the areas below the belt styling crease line. Below are the interior trim color and exterior paint combinations recommended by Chevrolet/GMC. They are the only available interior and exterior combinations allowed. For further information, refer to Seats and Interior Trim pages as well as the Ordering Guide.



WITH LUXURY TOURING PACKAGE (YC7) ONLY

EXTERIOR COLORS		STRIPE COLORS	INTERIOR COLORS		WHEEL COLORS*	
COLOR 1	COLOR 2		Blue	Saddle	Aluminum	Rally
27 Smoke Blue Met.	30 Catalina Blue Met.	Lt. Blue/Med. Blue	•		B	S
34 Sunset Gold Met.	68 Caramel Brown Met.	Lt. Brown/Dk. Brown Met.		•	G	G

*Wheel Color Legend: S-Silver, G-Gold, B-Lt. Blue

OPTIONS

1990 ASTRO/SAFARI PASSENGER VAN

KEY: S Standard
O Optional
— Not Available

1. Astro/Safari Passenger Van (M10906)
2. Astro/Safari Extended Passenger Van (M11006)
3. Astro/Safari AWD Passenger Van (L10906)
4. Astro/Safari AWD Extended Passenger Van (L11006)

OPTION	CODE	DESCRIPTION	RESTRICTIONS	MODELS																
				2-WHEEL DRIVE				ALL-WHEEL DRIVE												
				1	2	3	4	5	6	7	8									
AIR CONDITIONING		w/o V02 Cooling Incls V01 Cooling																		
Front	C60	Incl w/C69 Front and Rear Air		O	O					O	O									
Front and Rear	C69	Incls C60 Front Air		O	O					O	O									
AXLE, REAR	G80	(See Powertrains) Locking Differential	N/A with FE3																	
BUMPER EQUIPMENT	VE5	Bumpers, Deluxe Front and Rear Chromed w/Rub Strip Bumpers, Front and Rear Color-keyed w/Rub Strip	N/A BYP Sport Pkg	O	O					O	O									
	VE6	Incl w/YC6 or YC7. Also Incl w/BYP w/o YC6	N/A ZW9	O	O					O	O									
CARRIER, LUGGAGE	V54	Black		O	O					O	O									
COOLING SYSTEM	KC4	Engine Oil Cooler	Reqs V01 or V02 Cooling	O	O					O	O									
	V01	Radiator	N/A V02 Cooling	O	O					O	O									
	V02	H.D. Radiator and Transmission Oil		O	O					O	O									
COLD CLIMATE PACKAGE	V10	Incls Eng Block Heater Coolant		O	O					O	O									
CONVENIENCE GROUP	ZQ3	Incls Comfortilt Steering and Electronic Speed Control		O	O					O	O									
CONSOLE, ROOF	DK6		Reqs TR9 Lighting	O	O					O	O									
DOOR LOCK SYSTEM, POWER	AU3	Incl w/ZQ2 Conv Pkg		O	O					O	O									
ENGINES		(See Powertrains)																		
4.3-liter EFI V6	LB4																			
4.3-liter EFI V6	LU2																			
GLASS ARRANGEMENTS	ZW6	Complete Body	N/A BYP Sport Pkg	O	O					O	O									
GLASS TINTING																				
Deep Tinted	AJ1	Incl w/YC7 LT		O	O					O	O									
GRILLE	TL1	Deluxe Black w/Argent Highlights; Incl w/YC6 or YC7.	N/A ZW9	O	O					O	O									
HEATER	C36	Rear		O	O					O	O									
INSTRUMENTATION, ELECTRONIC	U52			O	O					O	O									
LIGHTING, AUXILIARY	TR9	Incl w/YC6 or YC7. Incls Front and Rear Dome Reading		O	O					O	O									
LUXURY PACKAGE (CL/SLE)	YC6	(See Trim Level Section)		O	O					O	O									
LUXURY TOURING PACKAGE (LT/SLT)	YC7	(See Trim Level Section)		O	O					O	O									
MIRRORS																				
Exterior, Below-Eye-Line Type	D44	Black		O	O					O	O									
Exterior Electric Remote	D48			O	O					O	O									
OPERATING CONVENIENCE PACKAGE	ZQ2	Incls AU3 Power Door Locks and Power Windows		O	O					O	O									
PAINT, EXTERIOR		(See Color and Trim)																		
Solid	ZY1																			
Special Two-Tone	ZY3																			
Deluxe Two-Tone	ZY4																			
Custom Two-Tone	ZY6																			
RADIO EQUIPMENT																				
Electronically-Tuned AM/FM Stereo Radio w/Seek-Scan and Digital Clock	UM7	14 Presets, Digital Display, two 6" x 9" ERS Front Speakers, two 6" ERS Rear Speakers, two 4" Rear Speakers, 33 Watts Total Power Output	Std on GMC models	O	O					O	O									
Electronically-Tuned AM/FM Stereo Radio w/Seek-Scan, Stereo Cassette Tape and Digital Clock	UM6	14 Presets, Digital Display, two 6" x 9" ERS Front Speakers, two 6" ERS Rear Speakers, two 4" Rear Speakers, 33 Watts Total Power Output		O	O					O	O									
Electronically-Tuned AM Stereo/FM Stereo Radio w/Seek-Scan, Stereo Cassette Tape with Search and Repeat, Graphic Equalizer and Digital Clock	UX1	14 Presets, Digital Display, two 6" x 9" ERS Front Speakers, two 6" ERS Rear Speakers, two 4" Rear Speakers, 33 Watts Total Power Output		O	O					O	O									
Radio Delete	UL5			O	O					O	O									

KEY: S Standard
 O Optional
 — Not Available

- 1. Astro/Safari Passenger Van (M10906)
- 2. Astro/Safari Extended Passenger Van (M11006)
- 3. Astro/Safari AWD Passenger Van (L10906)
- 4. Astro/Safari AWD Extended Passenger Van (L11006)

OPTION	CODE	DESCRIPTION	RESTRICTIONS	MODELS																
				2-WHEEL DRIVE				ALL-WHEEL DRIVE												
				1	2	3	4	5	6	7	8									
SEATING ARRANGEMENTS																				
5 Person Seating	ZP5	2 Front High Back Buckets and Std 3-Passenger Bench		S	S			S	S											
7 Person Seating	ZP7	4 High Back Bucket Seats and 3-Passenger Bench; Incls A78 Seat Back Recl	Reqs Custom Trim	O	O			O	O											
8 Person Seating	ZP8	2 High Back Bucket Seats and Two 3-Passenger Bench Seats; YC7 LT Adds Reclining Seat Backs and Split Bench Seats		O	O			O	O											
SEAT BACK RECLINER AND DUAL ARMRESTS	A78	Incl w/ZP7 Seating; or YC7	Reqs Custom Trim	O	O			O	O											
SEAT, 6-WAY POWER, DRIVER	AC3			O	O			O	O											
SHOCK ABSORBERS	F51	Front and Rear, Heavy-Duty, 32mm	N/A FE3 or BYP	O	S			S	S											
SPORT PACKAGE	BYP	Incls Air Dam w/Fog Lamps, Sport Suspension, Luxury Sport Steering Wheel, Color Keyed Front & Rear Bumpers and a Wide Black Body Side Molding and Grille w/Red Striping	Reqs ZY6 and 3.42 or 3.73 Rear Axle. N/A YC7 or ZW6 Glass	O	—			—	—											
STRIPE COLOR		(See Color and Trim)	Reqs D85 Body Striping N/A YC7																	
Gold w/Black Border	53A		N/A YC7																	
Blue w/Silver Border	25A		N/A YC7																	
Orange w/Black Border	58A		N/A YC7																	
Red w/Silver Border	71A		N/A YC7																	
Red w/Black Border	74A		N/A YC7																	
STRIPING, BODY	D85	(See Color and Trim) Incl w/ZY4 Deluxe Two-Tone Paint	N/A ZY1, ZY3 or ZY6																	
SUSPENSION, SPORT	FE3	Incls ZJ7 Wheels, QIB P245/60HR15 White Outlined Lettered Tires, Rear Stabilizer & Front & Rear Gas Shocks Incl w/BYP Sport Pkg		O	O			—	—											
TIRE EQUIPMENT		(See Wheels and Tires for Details)																		
P205/75R15	QCE			S	—			S	—											
P205/75R15	QCF			O	—			O	—											
P205/75R15	QCG			O	—			O	—											
P215/75R15	QCU			—	S			—	S											
P215/75R15	QCV			—	O			—	O											
P215/75R15	QCW			—	O			—	O											
P245/60HR15	QIB		Reqs FE3 Susp	O	O			O	O											
TRAILERING SPECIAL EQUIPMENT																				
Heavy-Duty	Z82	Incls Trailering Hitch and Wiring Harness; Incls V02 and KC4 Engine Oil Cooler and Heavy-Duty Flasher	Reqs F51 Shocks, BYP Sport Pkg or FE3 Sport Suspension & 3.42 or 3.73 Rear Axle	O	O			O	O											
Light-Duty	Z72	Incls Trailer Hitch and Wiring Harness	Reqs V01 or V02 Cooling	O	O			O	O											
TRANSMISSIONS																				
4-Speed Automatic w/Overdrive	MX0	(See Powertrains)																		
WHEELS																				
Aluminum	PF3	On YC7 LT Color-Keyed		O	O			O	O											
Rally	ZJ7	Incl w/BYP Sport Pkg, YC6, YC7 or FE3. Incls Special Hub Caps and Trim Rings		O	O			O	O											

COOLING

1990 ASTRO/SAFARI PASSENGER VAN

MODEL	ASTRO/SAFARI PASSENGER VAN	ASTRO/SAFARI EXTENDED PASSENGER VAN	ASTRO/SAFARI ALL-WHEEL DRIVE PASSENGER VAN	ASTRO/SAFARI ALL-WHEEL DRIVE EXTENDED PASSENGER VAN
MODEL NUMBER	M10906	M11006	L10906	L11006
STANDARD COOLING SYSTEM				
ENGINE	4.3L	4.3L	4.3L	4.3L
Standard Radiator Thickness (in.)	.93	.93	.93	.93
Total System Cap. (gal.)	3.4	3.4	3.4	3.4
Standard Fan (No. Blades x Diameter x Pitch)	3 x 18.1 x 2.72	3 x 18.1 x 2.72	3 x 18.1 x 2.72	3 x 18.1 x 2.72
OPTIONAL COOLING SYSTEMS				
OPT. AIR CONDITIONING	C60 ¹	C60 ¹	C60 ¹	C60 ¹
Radiator Thickness (in.)	.93	.93	.93	.93
Total System Cap. (gal.)	3.4	3.4	3.4	3.4
Fan (No. Blades x Diameter x Pitch)	5 x 19 x 2.7	5 x 19 x 2.7	5 x 19 x 2.7	5 x 19 x 2.7
OPT. H.D. RADIATOR AND TRANS. OIL COOLER	V02 ²	V02 ²	V02 ²	V02 ²
Radiator Thickness (in.)	.93	.93	.93	.93
Total System Cap. (gal.)	3.4	3.4	3.4	3.4
Fan (No. Blades x Diameter x Pitch)	3 x 18.1 x 2.72	3 x 18.1 x 2.72	3 x 18.1 x 2.72	3 x 18.1 x 2.72

¹w/ V02 Cooling. Incls. V01 Cooling ²Included w/Z82 Trailering

MODEL	ASTRO/SAFARI PASSENGER VAN	ASTRO/SAFARI EXTENDED PASSENGER VAN	ASTRO/SAFARI ALL-WHEEL DRIVE PASSENGER VAN	ASTRO/SAFARI ALL-WHEEL DRIVE EXTENDED PASSENGER VAN
MODEL NUMBER	M10906	M11006	L10906	L11006
EXTERIOR DIMENSIONS				
BODY:				
Wheelbase (in.)	111.0	111.0	111.0	111.0
- Overall Length (in.)	176.8	186.8	176.8	186.8
Overall Height (in.)	74.1	74.1	74.1	74.1
Maximum Width (in.)	77.0	77.0	77.0	77.0
Bumper To Axle—Front Rear (in.)	30.6 35.2	30.6 45.2	30.6 35.2	30.6 45.2
Ground To Top of Load Floor (in.)	24.4	24.6	24.4	24.6
Ground Clearance FRONT (in.) REAR	6.8 7.7	7.0 7.8	6.8 7.7	7.0 7.8
SIDE LOAD DOOR:				
Opening Height (in.)	44.5	44.5	44.5	44.5
Opening Width (in.)	34.5	34.5	34.5	34.5
REAR LOAD DOOR:				
Opening Height (in.)	44.7	44.7	44.7	44.7
Opening Width (in.)	57.0	57.0	57.0	57.0
INTERIOR				
Headroom (in.) FRONT MIDDLE REAR	39.2 37.9 38.3	39.2 37.9 38.3	39.2 37.9 38.3	39.2 37.9 38.3
Legroom (in.) FRONT MIDDLE REAR	41.6 36.5 38.5	41.6 36.5 38.5	41.6 36.5 38.5	41.6 36.5 38.5
Shoulder Room (in.) FRONT MIDDLE REAR	64.0 67.8 67.8	64.0 67.8 67.8	64.0 67.8 67.8	64.0 67.8 67.8
Hip Room (in.) FRONT MIDDLE REAR	64.9 50.9 50.9	64.9 50.9 50.9	64.9 50.9 50.9	64.9 50.9 50.9
Load Floor Length (in.) w/Front SEAT w/MIDDLE SEAT w/REAR SEAT	88.9 51.4 24.1	98.9 61.4 34.1	88.9 51.4 24.1	98.9 61.4 34.1
Interior Height (in.)	47.5	47.5	47.5	47.5
Interior Width Beltline (in.) Between Wheelhousings	51.6	51.6	51.6	51.6
Cargo Capacity (cu. ft.) w/Front SEAT w/MIDDLE SEAT w/REAR SEAT	151.8 85.8 22.7	170.4 104.4 41.3	151.8 85.8 22.7	170.4 104.4 41.3
FUEL TANK				
Std. Tank Nominal (gal.)	27.0	27.0	27.0	27.0
Location of Tank	Between Frame Rails Forward of Rear Axle	Between Frame Rails Forward of Rear Axle	Between Frame Rails Forward of Rear Axle	Between Frame Rails Forward of Rear Axle
Location of Filler	Left Side	Left Side	Left Side	Left Side
Optional Tank Nominal (gal.)	—	—	—	—
Location of Tank	—	—	—	—
Location of Filler	—	—	—	—

STEERING/BRAKES

1990

ASTRO/SAFARI PASSENGER VAN

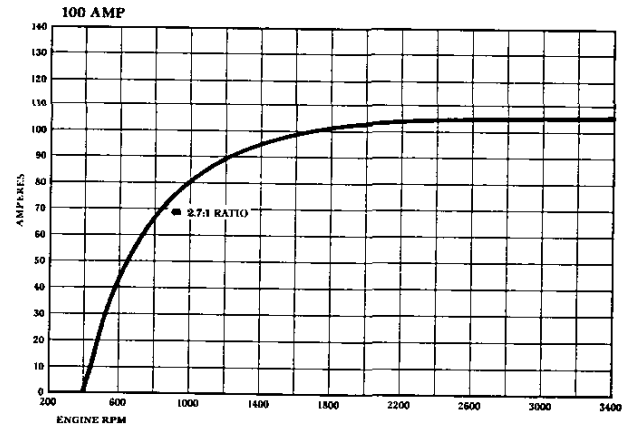
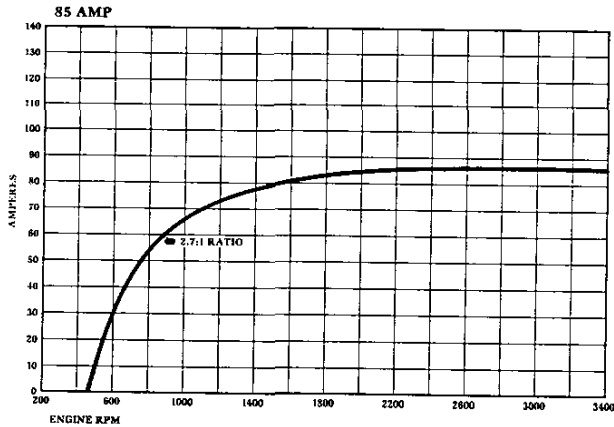
MODEL	ASTRO/SAFARI PASSENGER VAN	ASTRO/SAFARI EXTENDED PASSENGER VAN	ASTRO/SAFARI ALL-WHEEL DRIVE PASSENGER VAN	ASTRO/SAFARI ALL-WHEEL DRIVE EXTENDED PASSENGER VAN
MODEL NUMBER	M10906	M11006	L10906	L11006
STEERING				
Type	Recirc. Ball	Recirc. Ball	Recirc. Ball	Recirc. Ball
Steering Ratio (Variable)	16/13:1	16/13:1	16/13:1	16/13:1
Turning Diameter: Curb-To-Curb (ft.) Wall-To-Wall (ft.)	39.5 40.5	39.5 40.5	40.5 —	40.5 —
BRAKES				
GVWR (lbs.)	5600	5850	5800	5950
Type	Vac. Power Front Disc/Rear Drum with 4-Wheel Anti-Lock System	Hydraulic Power Front Disc/Rear Drum with 4-Wheel Anti-Lock System	Hydraulic Power Front Disc/Rear Drum with 4-Wheel Anti-Lock System	Hydraulic Power Front Disc/Rear Drum with 4-Wheel Anti-Lock System
Booster (Diaphragm Diameter) (in.)	7.9 x 7.9 Tandem	Hydro-boost	Hydro-boost	Hydro-boost
Front Rotor Size (Diameter x Thickness) (in.)	11.86 x 1.04	11.86 x 1.04	11.57 x 1.25	11.57 x 1.25
Front Facing Contact Per Axle (sq. in.)	37.92	37.92	34.8	34.8
Rear Drum Size (Diameter x Width) (in.)	9.5 x 2.0	9.5 x 2.0	9.5 x 2.0	9.5 x 2.0
Rear Facing Contact Per Axle (sq. in.)	64.7	64.7	64.7	64.7
Parking Brake Type	Cable To Rear Wheels	Cable To Rear Wheels	Cable to Rear Wheels	Cable to Rear Wheels

MODEL	ASTRO/SAFARI PASSENGER VAN	ASTRO/SAFARI EXTENDED PASSENGER VAN	ASTRO/SAFARI ALL-WHEEL DRIVE PASSENGER VAN	ASTRO/SAFARI ALL-WHEEL DRIVE EXTENDED PASSENGER VAN
MODEL NUMBER	M10906	M11006	L10906	L11006
ELECTRICAL				
ENGINE STD./OPT.	4.3L V6	4.3L V6	4.3L V6	4.3L V6
STANDARD BATTERY:				
Cold Cranking Amps @ 0°F	630	630	630	630
@ -20°F	490	490	490	490
Reserve Capacity Minutes @ 80°F	115	115	115	115
STANDARD ALTERNATOR:				
Max. Capacity (Amps)	85	85	85	85
Max Watts @ 12 Volts	1020	1020	1020	1020
Nominal Amp @ Idle (Approx.)	30	30	30	30
Drive Pulley Ratio	2.7:1	2.7:1	2.7:1	2.7:1
Model Number	CS130	CS130	CS130	CS130
OPTIONAL ALTERNATOR:¹	w/C60 Air or C69 Front/Rear Air	w/C60 Air or C69 Front/Rear Air	w/C60 Air or C69 Front/Rear Air	w/C60 Air or C69 Front/Rear Air
Max. Capacity (Amps)	100	100	100	100
Max Watts @ 12 Volts	1200	1200	1200	1200
Nominal Amp @ Idle (Approx)	36	36	36	36
Drive Pulley Ratio	2.7:1	2.7:1	2.7:1	2.7:1
Model Number	CS130	CS130	CS130	CS130

¹Note: Alternator is available only as part of Noted RPO.

ALTERNATOR CURVES

(Refer to Alternator Chart for Availability)



TWO-WHEEL DRIVE

ALL-WHEEL DRIVE

MODEL	ASTRO/SAFARI PASSENGER VAN	ASTRO/SAFARI EXTENDED PASSENGER VAN	ASTRO/SAFARI ALL-WHEEL DRIVE PASSENGER VAN	ASTRO/SAFARI ALL-WHEEL DRIVE EXTENDED PASSENGER VAN
MODEL NUMBER	M10906	M11006	L10906	L11006
SUSPENSION (OPT)				
Option	—	—	C6M	—
PAYLOAD (Max. lbs.) ¹	—	—	1035	—
GVWR (lbs.)	—	—	5950	—
GAWR (lbs.): Front Rear	— —	— —	3050 3150	— —
FRONT SUSPENSION: Type Standard Spring Cap. (Tot. lbs.)	— — —	— — —	Torsion Bar 3050	— — —
Front Shock Absorbers Piston Diameter (mm) STD/OPT	— — —	— — —	32/—	— — —
Front Stabilizer Bar Diameter (in.) STD/OPT	— — —	— — —	1.18/—	— — —
REAR SUSPENSION: Type	—	—	Composite Leaf Spring	—
Standard Spring Cap. (Tot. lbs.) Leaves Per Spring Leaf Total Thickness (in.)	— — — —	— — — —	3150 1 .813	— — — —
Rear Shock Absorbers Piston Diameter (mm) STD/OPT	— — —	— — —	32/—	— — —
FRONT AXLE: Type Make Maximum Capacity (lbs.) Standard Hub Locks Pinion/Ring Gear Type	— — — — —	— — — — —	Independent GM 3050 Insta-Trac Hypoid	— — — — —
REAR AXLE: Type Make Maximum Capacity (lbs.) Pinion/Ring Gear Type	— — — —	— — — —	Semi-Floating GM 3150 Hypoid	— — — —
STANDARD TIRES Tire Capacity (lbs. ea.) Front/Rear Inflation (PSI) Max.	— — — —	— — — —	Tubeless SBR P215/70R15 1583 35	— — — —
WHEELS: Size (in.) Front/Rear Capacity (lbs. ea.) Bolt Holes Bolt Circle Diameter (in.) Offset (mm) Revolutions per mile @ 45 MPH	— — — — — —	— — — — — —	15 x 6.00 1575 5 5 13 753	— — — — — —

¹Based on model weight. Total available for equipment and cargo.

ASTRO/SAFARI PASSENGER VAN

WHEELS AND TIRES

KEY: — - Not Available
 AS - All-Season
 SBR - Steel-Belted Radial Ply
 BW - Blackwall
 WW - Whitewall

WL - White Lettered
 HWY - Highway
 ON-OFF - On-Off Road
 WOL - White Outline Lettered

P-METRIC RADIAL TIRES

The tire load range in P-Metric Series Radial Tires is not identified with letters such as B, C, and D or with ply rating as in the Alpha system. P-Metric tires are offered with a Standard Load Rating or Extra Load Rating which is related to tire pressure.—Standard Load—35 psi Extra Load—41 psi
 Maximum tire pressure will be stamped on the tire sidewall in metric kilo Pascals (kPa) and pounds per square inch (PSI). In metric tire pressure, 7 kilo Pascals (kPa) are equivalent to 1 lb. per sq. in. (PSI). The tire maximum load capacity will also be stamped on the tire sidewall in kilograms and pounds.

TIRE SIZE	TYPE	RPO	PLY	LOAD RANGE	TIRE CAPACITY (LBS. EA.)	INFLATION (PSI) MAX.	WHEEL SIZE (IN.)	WHEEL CAPACITY (LBS. EA.)	BOLT HOLES	BOLT CIRCLE DIA. (IN.)	OFFSET (MM)	REV. PER MILE @ 45 MPH
P205/75R15	AS SBR BW	QCE	—	—	1453	35	15 x 6.0	1575	5	5	13	769
P205/75R15	AS SBR WW	QCG	—	—	1453	35	15 x 6.0	1575	5	5	13	769
P205/75R15	AS SBR WL	QCF	—	—	1453	35	15 x 6.0	1575	5	5	13	769
P215/75R15	AS SBR	QCU	—	—	1583	35	15 x 6.0	1575	5	5	13	753
P215/75R15	AS SBR	QCV	—	—	1583	35	15 x 6.0	1575	5	5	13	753
P215/75R15	AS SBR	QCW	—	—	1583	35	15 x 6.0	1575	5	5	13	753
P245/60HR15 ¹	AS SBR WOL GT	QIB	—	—	1593	35	15 x 6.5	1575	5	5	13	784

¹Requires FE3 Suspension

OPTIONAL WHEELS

RPO	DESCRIPTION	WHEEL SIZE (IN.)	CAPACITY	BOLT HOLES	BOLT CIRCLE DIA. (IN.)	OFFSET (MM)
PF3	Wheels—Aluminum (and Special Hub Caps)	15 x 6.50	1575	5	5	13
ZJ7	Wheels—Rally (Included w/BYP Sport Pkg., YC6 CL, YC7 LT or FE3 Suspension; Rally Wheels Includes Special Hub Caps and Trim Rings)	15 x 6.50	1575	5	5	13

POWERTRAINS

TRANSMISSION GEAR RATIOS

1990
ASTRO/SAFARI PASSENGER VAN

AUTOMATIC

TRANSMISSION MODEL	AUTOMATIC 4-SPEED w/OVERDRIVE 700R4
RPO CODE	MX0
GEAR RATIOS First Second Third Fourth Reverse	 3.06 1.63 1.00 .70 2.29
GEAR TYPE	Planetary
TORQUE CONVERTER Element Types Lock-up Clutch	Pump/Stator/Turbine Automatic
POWER TAKE-OFF DATA Opening Type: Location: Drive Gear: PTO Gear RPM @ 1000 Engine RPM: PTO Pitch Line Velocity @ 1000 RPM:	 — — — — — —
LUBRICANT CAPACITY (pints) Dry Fill Refill	 19 9

REAR AXLES

KEY: FF—Full-Floating

REAR AXLE: Make and Capacity (lbs.)	GM 2900/3150			
PINION & RING GEARS: Type	Hypoid			
Ratio	3.23	3.42	3.73	4.10
Pinion Teeth	13	12	11	9
Ring Gear Teeth	42	41	41	37
Ring Gear Dia. (in.)	7.5	7.5	7.5	7.5
DIFFERENTIAL: Type Bearings, Type	2-Pinion Tapered Roller			
AXLE SHAFTS: Type	Semi-Floating Integral Shaft and Drive Flange			
Min. Diameter (in.)	—			
HOUSING @ SPRING SEAT: Section Diameter and Thickness (in.)	2.69 x .116-.175			

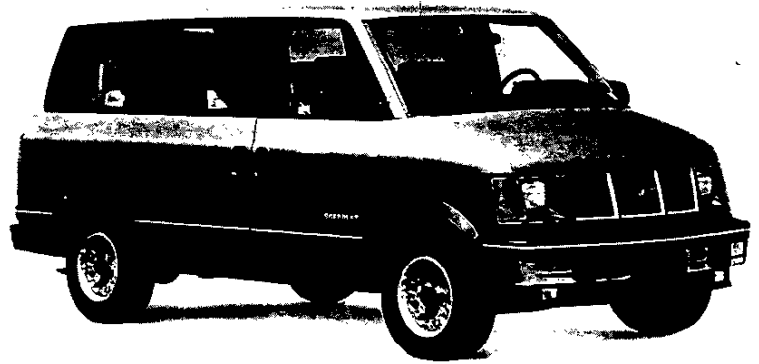
	TWO-WHEEL DRIVE		ALL-WHEEL DRIVE	
MODEL	ASTRO/SAFARI PASSENGER VAN	ASTRO/SAFARI EXTENDED PASSENGER VAN	ASTRO/SAFARI ALL-WHEEL DRIVE PASSENGER VAN	ASTRO/SAFARI ALL-WHEEL DRIVE EXTENDED PASSENGER VAN
MODEL NUMBER	M10906	M11006	L10906	L11006
SUSPENSION (STD)				
PAYLOAD (Max. lbs.) ¹	1012	1297	890	1120
GVWR (lbs.)	5600	5850	5800	6100
GAWR (lbs.): Front	2700	2700	2906	3050
Rear	2900	3150	2906	3150
FRONT SUSPENSION:				
Type	Ind. Coil Spring	Ind. Coil Spring	Torsion Bar	Torsion Bar
Standard Spring Cap. (Tot. lbs.)	2700	2700	3050	3050
Front Shock Absorbers Piston Diameter (mm) STD/OPT	25/32	32/—	32/—	32/—
Front Stabilizer Bar Diameter (in.) STD/OPT	1.26/—	1.26/—	1.18/—	1.18/—
REAR SUSPENSION:				
Type	Composite Leaf Spring	Composite Leaf Spring	Composite Leaf Spring	Composite Leaf Spring
Standard Spring Cap. (Tot. lbs.)	2900	2900	3150	3150
Leaves Per Spring	1	1	1	1
Leaf Total Thickness (in.)	.813	.813	.813	.813
Rear Shock Absorbers Piston Diameter (mm) STD/OPT	25/32	32/—	32/—	32/—
FRONT AXLE:				
Type	—	—	Independent	Independent
Make	—	—	GM	GM
Maximum Capacity (lbs.)	2700	2700	3050	3050
Standard Hub Locks	—	—	Insta-Trac	Insta-Trac
Pinion/Ring Gear Type	—	—	Hypoid	Hypoid
REAR AXLE:				
Type	Semi-Floating	Semi-Floating	Semi-Floating	Semi-Floating
Make	GM	GM	GM	GM
Maximum Capacity (lbs.)	2900	3150	3150	3150
Pinion/Ring Gear Type	Hypoid	Hypoid	Hypoid	Hypoid
STANDARD TIRES				
Tire Capacity (lbs. ea.)	Tubeless SBR P205/75R15	Tubeless SBR P215/75R15	Tubeless SBR P205/75R15	Tubeless SBR P215/75R15
Front/Rear	1453	1583	1453	1583
Inflation (PSI) Max.	35	35	35	35
WHEELS:				
Size (in.) Front/Rear	15 x 6.00	15 x 6.00	15 x 6.00	15 x 6.00
Capacity (lbs. ea.)	1575	1575	1575	1575
Bolt Holes	5	5	5	5
Bolt Circle Diameter (in.)	5	5	5	5
Offset (mm)	13	13	13	13
Revolutions per mile @ 45 MPH	769	753	769	753

¹Based on model weight. Total available for equipment and cargo.

ASTRO LT/ SAFARI SLT (RPO YC7)

The LT/SLT trim level is an optional trim level for the Astro/Safari series. It is designed to offer buyers an increased level of comfort and convenience features compared to the Standard CS/SLX trim level and the optional CL/SLE trim.

The following features are standard. Bold type denotes equipment in addition to or replacing that of the CL/SLE trim.



Some equipment shown may be optional or extra cost.

POWERTRAIN/CHASSIS

- ▣ 4.3-liter Vortec V6 engine with Electronic Fuel Injection (EFI) is standard. It produces 150 net horsepower @ 4000 rpm and 230-lb. ft. of net torque @ 2400 rpm.
- ▣ Dual electric high-note and low-note horn.
- ▣ 4-speed automatic overdrive transmission.

- Front suspension is an independent coil spring design on 2-wheel drive models and is a torsion bar design on all-wheel drive models.
- 1.26-inch front stabilizer bar on 2-wheel drive models.
- 1.18-inch front stabilizer bar on all-wheel drive models.
- Rear suspension is a composite leaf spring.

- Power front disc/rear drum brakes.
- Four-wheel anti-lock braking system.
- Power steering.
- Integral body frame design with boxed-section front stub frame.
- 27-gallon (approx.) fuel tank.
- 630 CCA battery.
- 85 Amp generator.

EXTERIOR

- ▣ Front and rear bumpers painted lower body color with color-keyed end caps, rub strips and rear black combination top step surface.
- ▣ **Special nameplates on front side door "B" pillars.**
- ▣ Molded black plastic grille with argent paint on feature surfaces.
- ▣ Black painted window pillars.
- ▣ Black body side moldings and wheel opening moldings.
- ▣ Halogen headlamps.
- ▣ **Wide, color-keyed, graduated-tone striping at beltline.**

- **15" x 6.5" rally wheels are color-keyed to body.**
- Four all-season steel-belted radial tires (see Wheels and Tires for size and type).
- Compact spare tire and wheel mounted under floor.
- Driver and passenger front side doors, sliding RH side cargo RH and LH rear load doors.
- Intermittent windshield wiper system.

- RH and LH black-painted mirrors with pivoting arm and adjustable heads. Mirror-head size is 4¾" x 7".
- Tools include screw-operated scissor-type jack with ratchet handle, extension and two wheel blocks.
- Hot melt wax on entire underbody.
- Front license plate bracket.
- Air dam with fog lamps.

INTERIOR

- ▣ RH and LH armrests.
- ▣ Color-keyed expanded vinyl door trim panels with carpet inserts and insulation and front-door map pockets.
- ▣ **Special front bucket seats with reclining backs, folding integral armrests, and full-width adjustable headrests. Split-back center seat includes fold-down center console with convenience tray and cup pockets. RH seat-back folds forward for easy access to rear. All seats are trimmed with special velour fabric.**
- ▣ Two LH and one RH side coat hooks.
- ▣ Latex foam rubber door seals.
- ▣ **Color-keyed door sill plates and scuff plates.**
- ▣ Two dome lamps with front door, rear door and sliding door-actuated switches. Also included is a door-jamb defeat switch.
- ▣ Headlamp warning chimes.

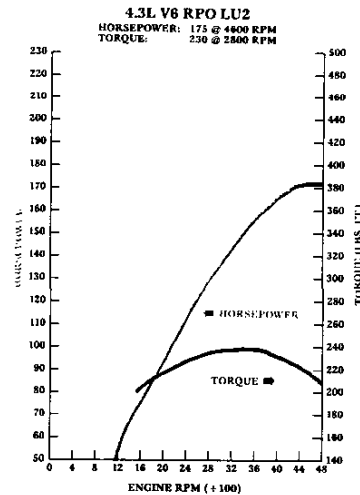
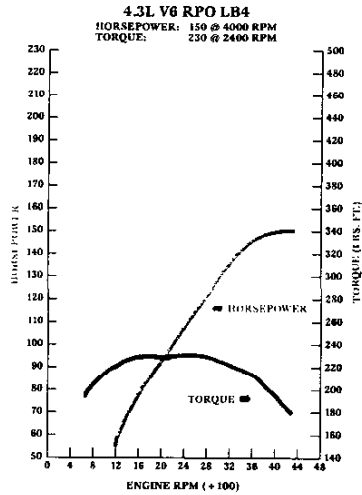
- Floor covering consists of color-keyed carpeting on wheelhousings and floor area, and color-keyed floor mats.
- LH and RH color-keyed cloth sunshades with a lighted RH visor mirror.
- **Deep tinted glass.**
- Gages include speedometer, odometer, fuel level, voltmeter, oil pressure, coolant temperature and trip odometer.
- Remote release for fuel filler door.
- ▣ **Special luxury sport-type leather wrapped steering wheel with anti-theft locking feature.**
- Deluxe heater and defogger with side window defogger.

- Molded, color-keyed plastic storage compartment in LH rear quarter area. **Also, storage pouch with zipper on LH side trim panel.**
- Full-length, color-keyed, foam-backed cloth headliner.
- Stowage box with light including beverage holder in front face of engine cover extension.
- Swing-out glass on sliding side door and rear door.
- Convenience tray lamp, stepwell lamp, storage compartment lamp.
- Chevrolet models feature an electronically-tuned AM radio with fixed mast antenna.
- GMC models feature an electronically-tuned AM/FM stereo radio with seek/scan and digital clock and fixed mast antenna.
- Cigarette lighter with ashtray light.

HORSEPOWER AND TORQUE RATINGS (ASTRO/SAFARI PASSENGER VAN)

ENGINE	4.3L V6	
ORDERING CODE	LB4	LU2 ¹
SAE NET HORSEPOWER @ KPM	150 @ 4000	175 @ 4600
SAE NET TORQUE LB. FT. @ RPM	230 @ 2400	230 @ 2800
FUEL SYSTEM	EFI	EFI
CLUTCH SIZE (IN.)	—	—
STD. Battery (Cold Cranking Amps @ 0°F)	630	630

¹3-wheel drive models only.



KEY: S Standard O Optional
—Not Offered

RED Not Available w/California Emissions
BOLD Not Available w/High Altitude Emissions

H High Altitude Emissions Only
C California Emissions Only

MODEL	TRANSMISSION				AXLES				GVWR		
	(MM4) MAN 4-SPD	(MM5) MAN 5-SPD	(MX1) AUTO 3-SPD	(MX0) AUTO 4-SPD	←ECONOMY→		POWER→				
ASTRO/SAFARI PASSENGER VAN M10906							3.23	3.42	3.73	4.10	
ENGINE											
4.3L V6 (LB4)	—	—	—	S			S	O	O ¹	—	
4.3L V8 (LU2)	—	—	—	S			—	—	—	S	5600

¹ Requires Z82 Trailing Equipment Option.

MODEL	TRANSMISSION				AXLES				GVWR		
	(MM4) MAN 4-SPD	(MM5) MAN 5-SPD	(MX1) AUTO 3-SPD	(MX0) AUTO 4-SPD	←ECONOMY→		POWER→				
ASTRO/SAFARI EXTENDED PASSENGER VAN M11006							3.23	3.42	3.73	4.10	
ENGINE											
4.3L V6 (LB4)	—	—	—	S			S	O	O ¹	—	
4.3L V8 (LU2)	—	—	—	S			—	—	—	S	5850

¹ Requires Z82 Trailing Equipment Option.

MODEL	TRANSMISSION				AXLES				GVWR		
	(MM4) MAN 4-SPD	(MM5) MAN 5-SPD	(MX1) AUTO 3-SPD	(MX0) AUTO 4-SPD	←ECONOMY→		POWER→				
ASTRO/SAFARI ALL-WHEEL DRIVE PASSENGER VAN L10906							3.23	3.42	3.73	4.10	
ENGINE											
4.3L V6 (LB4)	—	—	—	S			—	S	O ¹	—	5800

¹ Requires Z82 Trailing Equipment Option.

MODEL	TRANSMISSION				AXLES				GVWR		
	(MM4) MAN 4-SPD	(MM5) MAN 5-SPD	(MX1) AUTO 3-SPD	(MX0) AUTO 4-SPD	←ECONOMY→		POWER→				
ASTRO/SAFARI ALL-WHEEL DRIVE PASSENGER VAN/EXTENDED VAN L11006							3.23	3.42	3.73	4.10	
ENGINE											
4.3L V6 (LB4)	—	—	—	S			—	S	O	—	6100

ASTRO CL/ SAFARI SLE (RPO YC6)

The CL/SLE trim level is an optional trim level for the Astro/Safari series. It is designed to offer buyers an increased level of comfort and convenience features compared to the standard CS/SLX trim.

The following features are standard. Bold type denotes equipment in addition to or replacing that of the CS/SLX trim.



Some equipment shown may be optional or extra cost.

POWERTRAIN/CHASSIS

- 4.3-liter Vortec V6 engine with Electronic Fuel Injection (EFI) is standard. It produces 150 net horsepower @ 4000 rpm and 230-lb. ft. of net torque @ 2400 rpm.
- Dual electric high-note and low-note horn.
- 4-speed automatic overdrive transmission.

- Front suspension is an independent coil spring design on 2-wheel drive models and is a torsion bar design on all-wheel drive models.
- 1.26-inch front stabilizer bar on 2-wheel drive models.
- 1.18-inch front stabilizer bar on all-wheel drive models.
- Rear suspension is a composite leaf spring.

- Power front disc/rear drum brakes.
- Four-wheel anti-lock braking system.
- Power steering.
- Integral body frame design with boxed-section front stub frame.
- 27-gallon (approx.) fuel tank.
- 630 CCA battery.
- 85 Amp generator.

EXTERIOR

- Front and rear bumpers painted lower body color with **matching color-keyed end caps, rub strips and rear black combination top step surface.**
- Bright Astro/Safari nameplates.
- Molded black plastic grille with **argent paint on feature surfaces.**
- Black painted window pillars.
- **Black body side moldings and wheel opening moldings.**
- Halogen headlamps.

- **15" x 6.5" steel rally wheels.**
- Four all-season steel-belted radial tires (see Wheels and Tires for sizes and type).
- Compact spare tire and wheel mounted under floor.
- Driver and passenger front side doors, sliding RH side cargo door, RH and LH rear load doors.
- Intermittent windshield wiper system.

- RH and LH black-painted mirrors with pivoting arm and adjustable heads. Mirror-head size is 4 3/4" x 7".
- Tools include screw-operated scissor-type jack with ratchet handle, extension and two wheel blocks.
- Hot melt wax on entire underbody.
- Front license plate bracket.
- **Air dam with fog lamps.**

INTERIOR

- RH and LH armrests.
- Color-keyed **expanded vinyl door trim panels with carpet inserts and insulation** and front-door map pockets.
- Front high-back adjustable bucket seats with **choice of Custom Vinyl trim or Custom Cloth with vinyl trim**, plus center removable 3-passenger bench seat.
- Two LH and one RH side coat hooks.
- Latex foam rubber door seals.
- Black plastic door sill plates.
- Two dome lamps with front door, **rear door and sliding door-actuated switches. Also included is a door-jamb defeat switch.**
- Headlamp warning chimes.

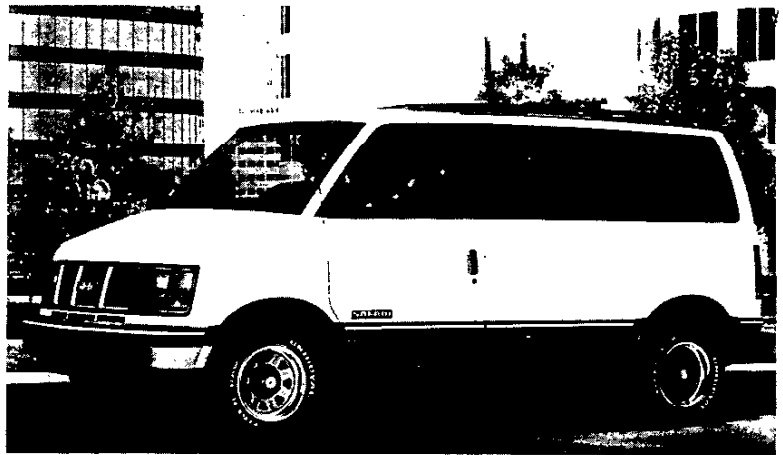
- Floor covering consists of color-keyed carpeting on wheelhousings and floor and **color-keyed floor mats.**
- LH and RH color-keyed cloth sunshades with a **lighted RH visor mirror.**
- Tinted glass on all windows.
- Gages include speedometer, odometer, fuel level, voltmeter, oil pressure, coolant temperature and trip odometer.
- Remote release for fuel filler door.
- 4-spoke **custom steering wheel** with anti-theft locking features.
- Cigarette lighter with ashtray light.

- Molded, color-keyed plastic storage compartment in LH rear quarter area.
- Full-length, color-keyed, foam-backed cloth headliner.
- Stowage box with **light** including beverage holder in front face of engine cover extension.
- Swing-out glass on sliding side door **and rear door.**
- **Convenience tray lamp, stepwell lamp, storage compartment lamp.**
- Chevrolet models feature an electronically-tuned AM radio with fixed mast antenna.
- GMC models feature an electronically-tuned AM/FM stereo radio with seek/scan and digital clock and fixed mast antenna.
- Deluxe heater and defogger with side window defogger.

**ASTRO CS/
SAFARI SLX
(ZW9)**

The CS/SLX trim level is the standard trim level of the Astro/Safari series. It is designed to offer buyers a high level of standard features when purchasing a standard-level vehicle.

The following features are standard:



Some equipment shown may be optional or extra cost.

POWERTRAIN/CHASSIS

- 4.3-liter Vortec V6 engine with Electronic Fuel Injection (EFI) is standard. It produces 150 net horsepower @ 4000 rpm and 230-lb. ft. of net torque @ 2400 rpm.
- Dual electric high-note and low-note horn.
- 4-speed automatic overdrive transmission.

- Front suspension is an independent coil spring design on 2-wheel drive models and is a torsion bar design on all-wheel drive models.
- 1.26-inch front stabilizer bar on 2-wheel drive models.
- 1.18-inch front stabilizer bar on all-wheel drive models.
- Rear suspension is a composite leaf spring.

- Power front disc/rear drum brakes.
- Four-wheel anti-lock braking system.
- Power steering.
- Integral body frame design with boxed-section front stub frame.
- 27-gallon (approx.) fuel tank.
- 630 CCA battery.
- 85 Amp generator.

EXTERIOR

- Front and rear bumpers painted lower body color.
- Bright Astro/Safari nameplates.
- Molded plastic grille painted black.
- Black painted window pillars.
- Halogen headlamps.
- Bright metal hub caps with black trim.

- 15" x 6.00" steel wheels painted argent.
- Four all-season steel-belted radial tires (see Wheels and Tires for size and type).
- Compact spare tire and wheel mounted under floor.
- Driver and passenger front side doors, sliding RH side cargo door, RH and LH rear load doors.
- Intermittent windshield wiper system.

- RH and LH black-painted mirrors with pivoting arm and adjustable heads. Mirror-head size is 4 3/4" x 7".
- Tools include screw-operated scissor-type jack with ratchet handle, extension and two wheel blocks.
- Hot melt wax on entire underbody.
- Front license plate bracket.

INTERIOR

- RH and LH armrests.
- Color-keyed vinyl door trim panels with front-door map pockets.
- Front high-back adjustable bucket seats with all-vinyl trim, plus center removable 3-passenger bench seat.
- Two LH and one RH side coat hooks.
- Latex foam rubber door seals.
- Black plastic door sill plates.
- Two dome lamps with front door-actuated switches.
- Headlamp warning chimes.

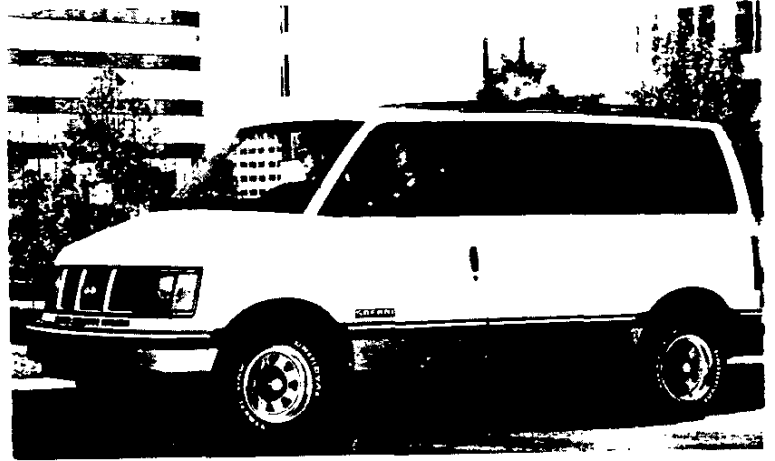
- Floor covering consists of color-keyed carpeting on wheelhousings and floor.
- LH and RH color-keyed cloth sunshades with RH visor mirror.
- Tinted glass on all windows.
- Gages include speedometer, odometer, fuel level, voltmeter, oil pressure, coolant temperature and trip odometer.
- Remote release for fuel filler door.
- Black vinyl 4-spoke steering wheel with anti-theft locking features.
- Cigarette lighter with ashtray light.

- Molded, color-keyed plastic storage compartment in LH rear quarter area.
- Full-length, color-keyed, foam-backed cloth headliner.
- Stowage box including beverage holder in front face of engine cover extension.
- Swing-out glass on sliding side door.
- Chevrolet models feature an electronically-tuned AM radio with fixed mast antenna.
- GMC models feature an electronically-tuned AM/FM stereo radio with seek/scan and digital clock and fixed mast antenna.
- Deluxe heater and defogger with side window defogger.

ASTRO CS/ SAFARI SLX (ZW9)

The CS/SLX trim level is the standard trim level of the Astro/Safari series. It is designed to offer buyers a high level of standard features when purchasing a standard-level vehicle.

The following features are standard:



Some equipment shown may be optional or extra cost.

POWERTRAIN/CHASSIS

- 4.3-liter Vortec V6 engine with Electronic Fuel Injection (EFI) is standard. It produces 150 net horsepower @ 4000 rpm and 230-lb. ft. of net torque @ 2400 rpm.
- Dual electric high-note and low-note horn.
- 4-speed automatic overdrive transmission.

- Front suspension is an independent coil spring design on 2-wheel drive models and is a torsion bar design on all-wheel drive models.
- 1.26-inch front stabilizer bar on 2-wheel drive models.
- 1.18-inch front stabilizer bar on all-wheel drive models.
- Rear suspension is a composite leaf spring.

- Power front disc/rear drum brakes.
- Four-wheel anti-lock braking system.
- Power steering.
- Integral body frame design with boxed-section front stub frame.
- 27-gallon (approx.) fuel tank.
- 630 CCA battery.
- 85 Amp generator.

EXTERIOR

- Front and rear bumpers painted lower body color.
- Bright Astro/Safari nameplates.
- Molded plastic grille painted black.
- Black painted window pillars.
- Halogen headlamps.
- Bright metal hub caps with black trim.

- 15" x 6.00" steel wheels painted argent.
- Four all-season steel-belted radial tires (see Wheels and Tires for size and type).
- Compact spare tire and wheel mounted under floor.
- Driver and passenger front side doors, sliding RH side cargo door, RH and LH rear load doors.
- Intermittent windshield wiper system.

- RH and LH black-painted mirrors with pivoting arm and adjustable heads. Mirror-head size is 4 3/4" x 7".
- Tools include screw-operated scissor-type jack with ratchet handle, extension and two wheel blocks.
- Hot melt wax on entire underbody.
- Front license plate bracket.

INTERIOR

- RH and LH armrests.
- Color-keyed vinyl door trim panels with front-door map pockets.
- Front high-back adjustable bucket seats with all-vinyl trim, plus center removable 3-passenger bench seat.
- Two LH and one RH side coat hooks.
- Latex foam rubber door seals.
- Black plastic door sill plates.
- Two dome lamps with front door-actuated switches.
- Headlamp warning chimes.

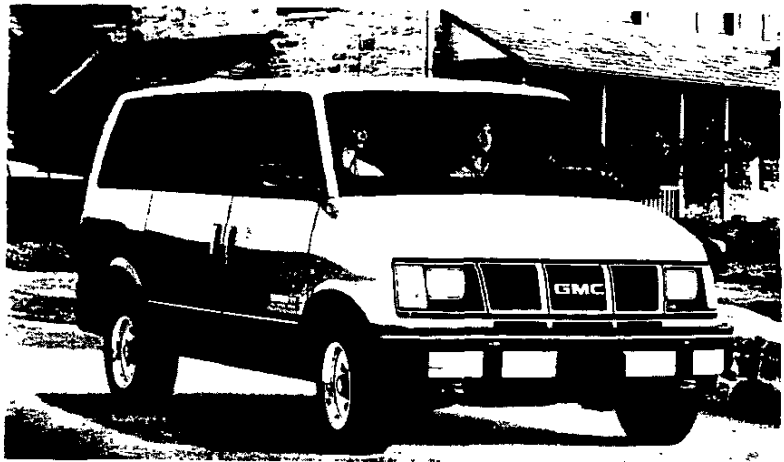
- Floor covering consists of color-keyed carpeting on wheelhousings and floor.
- LH and RH color-keyed cloth sunshades with RH visor mirror.
- Tinted glass on all windows.
- Gages include speedometer, odometer, fuel level, voltmeter, oil pressure, coolant temperature and trip odometer.
- Remote release for fuel filler door.
- Black vinyl 4-spoke steering wheel with anti-theft locking features.
- Cigarette lighter with ashtray light.

- Molded, color-keyed plastic storage compartment in LH rear quarter area.
- Full-length, color-keyed, foam-backed cloth headliner.
- Stowage box including beverage holder in front face of engine cover extension.
- Swing-out glass on sliding side door.
- Chevrolet models feature an electronically-tuned AM radio with fixed mast antenna.
- GMC models feature an electronically-tuned AM/FM stereo radio with seek/scan and digital clock and fixed mast antenna.
- Deluxe heater and defogger with side window defogger.

ASTRO CL/ SAFARI SLE (RPO YC6)

The CL/SLE trim level is an optional trim level for the Astro/Safari series. It is designed to offer buyers an increased level of comfort and convenience features compared to the standard CS/SLX trim.

The following features are standard. Bold type denotes equipment in addition to or replacing that of the CS/SLX trim.



Some equipment shown may be optional or extra cost.

POWERTRAIN/CHASSIS

- 4.3-liter Vortec V6 engine with Electronic Fuel Injection (EFI) is standard. It produces 150 net horsepower @ 4000 rpm and 230-lb. ft. of net torque @ 2400 rpm.
- Dual electric high-note and low-note horn.
- 4-speed automatic overdrive transmission.

- Front suspension is an independent coil spring design on 2-wheel drive models and is a torsion bar design on all-wheel drive models.
- 1.26-inch front stabilizer bar on 2-wheel drive models.
- 1.18-inch front stabilizer bar on all-wheel drive models.
- Rear suspension is a composite leaf spring.

- Power front disc/rear drum brakes.
- Four-wheel anti-lock braking system.
- Power steering.
- Integral body frame design with boxed-section front stub frame.
- 27-gallon (approx.) fuel tank.
- 630 CCA battery.
- 85 Amp generator.

EXTERIOR

- Front and rear bumpers painted lower body color **with matching color-keyed end caps, rub strips and rear black combination top step surface.**
- Bright Astro/Safari nameplates.
- Molded black plastic grille **with argent paint on feature surfaces.**
- Black painted window pillars.
- **Black body side moldings and wheel opening moldings.**
- Halogen headlamps.

- **15" x 6.5" steel rally wheels.**
- Four all-season steel-belted radial tires (see Wheels and Tires for sizes and type).
- Compact spare tire and wheel mounted under floor.
- Driver and passenger front side doors, sliding RH side cargo door, RH and LH rear load doors.
- Intermittent windshield wiper system.

- RH and LH black-painted mirrors with pivoting arm and adjustable heads. Mirror-head size is 4¾" x 7".
- Tools include screw-operated scissor-type jack with ratchet handle, extension and two wheel blocks.
- Hot melt wax on entire underbody.
- Front license plate bracket.
- **Air dam with fog lamps.**

INTERIOR

- RH and LH armrests.
- Color-keyed **expanded vinyl door trim panels with carpet inserts and insulation** and front-door map pockets.
- Front high-back adjustable bucket seats with **choice of Custom Vinyl trim or Custom Cloth with vinyl trim**, plus center removable 3-passenger bench seat.
- Two LH and one RH side coat hooks.
- Latex foam rubber door seals.
- Black plastic door sill plates.
- Two dome lamps with front door, **rear door and sliding door-actuated switches. Also included is a door-jamb defeat switch.**
- Headlamp warning chimes.

- Floor covering consists of color-keyed carpeting on wheelhousings and floor and **color-keyed floor mats.**
- LH and RH color-keyed cloth sunshades with a **lighted RH visor mirror.**
- Tinted glass on all windows.
- Gages include speedometer, odometer, fuel level, voltmeter, oil pressure, coolant temperature and trip odometer.
- Remote release for fuel filler door.
- 4-spoke **custom steering wheel** with anti-theft locking features.
- Cigarette lighter with ashtray light.

- Molded, color-keyed plastic storage compartment in LH rear quarter area.
- Full-length, color-keyed, foam-backed cloth headliner.
- Stowage box **with light** including beverage holder in front face of engine cover extension.
- Swing-out glass on sliding side door **and rear door.**
- **Convenience tray lamp, stepwell lamp, storage compartment lamp.**
- Chevrolet models feature an electronically-tuned AM radio with fixed mast antenna.
- GMC models feature an electronically-tuned AM/FM stereo radio with seek/scan and digital clock and fixed mast antenna.
- Deluxe heater and defogger with side window defogger.

ASTRO/SAFARI PASSENGER VAN

HOW TO USE GCWRs TO DETERMINE POWERTRAIN AND REAR AXLE RATIO FOR TRAILERING

Perhaps you prefer to use Gross Combination Weight Ratings (GCWRs) to determine the engine, transmission and rear axle ratio you will require to tow a special trailer with your truck. The chart below allows you to do just that. It shows you the maximum allowable GCWR based on all the available truck engines and rear axle

ratios with automatic or manual transmissions. The GCWR includes the total loaded weight of both the truck and trailer. Any available engine may be used for trailering if the GCWR shown is not exceeded. The trailer weight can be increased by 25% if the vehicle speed will not exceed 25 mph.

GROSS COMBINATION WEIGHT RATING (GCWR) Includes Weight of Both Truck and Trailer By Engine & Axle Ratio For Recreational Applications																				
With Automatic Transmission																				
GCWR (lb.)	6000	6500	7000	7500	8000	8500	9000	9500	10,000	10,500	11,000	11,500	12,000	12,500	13,500	14,000	14,500	15,000	16,000	19,000
Engines	Rear Axle Ratios																			
4.3L (262) V6 Gas							3.23	3.42	3.73											
H.O. 4.3L (262) V6 Gas									4.10											

When towing a trailer in excess of 3000 lbs. with a truck equipped with a 4-speed automatic transmission, it is recommended to shift to third gear range ("3") instead of overdrive ("D") for normal towing, and to manually down-shift as required on uphill and downhill grades.

Note: Model and driveline combinations must be verified by your local dealer for correct emissions equipment.

GENERAL TRAILERING INFORMATION

AVAILABLE TRAILERING EQUIPMENT

Chevrolet/GMC Truck offer a wide selection of available options for trailering and a few of them are illustrated and described here.

WIRING HARNESES

5-wire used with trailers up to 2000 lbs. gross weight and 7-wire for larger trailers. Harnesses tie into vehicle's electrical system to give your trailer lights, plus electric brakes or battery charging. (See diagram for wiring color code.)

HITCH BALLS

1 7/8" -diameter ball is standard with light-duty hitches. It is also available as an accessory: Part No. 981148. A 2" -diameter ball is also available for hitches as Part No. 980670.

DEALER-INSTALLED TRAILER HITCHES

	Light Up to 2000 Lbs. 200-Lb. Tongue Load	Light/Medium Up to 4000-Lbs. 400-Lb. Tongue Load	Heavy Up to 5000-Lbs. 600-lb. Tongue Load	Heavy Up to 7000-Lbs. 850-Lb. Tongue Load
Type of Hitch	Deadweight	Rear Step Bumper	Weight-Distrib. Platform	Weight-Distrib. Platform
Astro/Safari	N/A	N/A	N/A	N/A

MIRRORS

Trucks used as tow vehicles will require outside mirrors with extensions that exceed the width of the trailer to be towed. Optional mirrors with larger mounting brackets are available with all truck models.

TRUCK WIRING CODE

The following color code for trucks should be used when installing trailer wiring harnesses.

- **Blue.** Used for electric trailer brakes or auxiliary wiring.
- **Red.** Used for battery charging. Connects to starter solenoid. (7-wire harness only).
- **Light Green.** Backup lights (7-wire harness only).
- **Brown.** Taillight and running lights.
- **Yellow.** Left stop and turn signal.
- **Dark Green.** Right stop and turn signal.
- **White.** Ground.

COOLERS AND COOLING

Trailering creates higher-than-normal temperatures in coolant, engine and transmission oil. To help control these temperatures, consider the following separate options.

RPO V02. This is an extra-capacity heavy-duty automatic transmission oil cooler option. (Included in RPO Z82 Trailering Special Package.)

RPO KC4. This optional engine oil cooler circulates oil through a separate cooler mounted ahead of the radiator. (Included in RPO Z82 Trailering Package.)

TRAILERING SPECIAL PACKAGES

If you intend to tow a light trailer (up to 2000 lbs. gross weight) with your new Astro/Safari Passenger Van, Trailering Special Package (RPO Z72) is highly recommended. RPO Z72 includes a deadweight hitch which is bolted to the rear bumper and undercarriage and includes a 1 7/8" diameter hitch ball. This package also includes a light-duty 5-wire wiring harness with a male-female connector and a pigtail that must be spliced into the trailer wiring harness. This allows the electrical system to activate trailer lights and other electrical systems.

If you intend to tow a medium trailer (up to 4000 lbs. gross weight) or a heavy trailer (up to 6000 lbs. gross weight), heavy-duty Trailering Special Package RPO Z82 is a required option. (This Z82 option is also required, regardless of gross trailer weight, if your trailer tongue weight exceeds 400 lbs.) RPO Z82 includes a weight-distributing platform hitch receiver which is bolted to the undercarriage. RPO Z82 includes a heavy-duty 7-wire wiring harness that can be spliced into your special connector. With either trailering package, the wiring harness comes coiled and tied, with connecting end stored on the floor in the right-hand rear corner compartment.



See the chart below—Required/Recommended Trailering Equipment—for trailering options in addition to Trailering Special Packages.

The chart below indicates, in **bold type**, the trailering equipment required for light, medium and heavy trailer towing. Additional recommended options are also indicated. To help you in ordering, each column lists Regular Production Option (RPO) numbers.

Note that Chevrolet/GMC Truck strongly endorses the automatic transmission for towing.

Other important trailering information is available in the Owner's Manual of every 1990 Chevrolet/GMC Truck.

REQUIRED/RECOMMENDED TRAILERING EQUIPMENT

Trailer Classification	Light		Medium		Heavy	
	2000	4000	6000	6000	6000	6000
Maximum Gross Trailer Weight (lbs.) ¹	2000	4000	6000	6000	6000	6000
Maximum Tongue Load (lbs.)	200	500	750	750	750	750
Series	2WD	AWD	2WD	AWD	2WD	AWD
Trailering Special Package	Z72	Z72	Z82	Z82	Z82	Z82
5-Wire Wiring Harness (incl. in RPO Z72)	X	X	—	—	—	—
7-Wire Wiring Harness (incl. in RPO Z82)	—	—	X	X	X	X
Deadweight Hitch (incl. w/RPO Z72)	X	X	—	—	—	—
Weight-Distributing Hitch Platform (incl. in RPO Z82)	—	—	X	X	X	X
Minimum Engine						
4.3L (262 Cu. In.) V6 w/EFI	LB4	LB4	LB4	LB4	LB4	LB4
H.O. 4.3L (262 Cu. In.) V6 w/EFI	LU2	—	LU2	—	LU2	—
4-Spd. Automatic Transmission w/Overdrive	MX0	MX0	MX0	MX0	MX0	MX0
Minimum Rear Axle Ratio (to 1)	3.23³	3.23	3.42³	3.42	3.73³	3.73
Engine Oil Cooler (incl. in RPO Z82)	—	—	KC4	KC4	KC4	KC4
Transmission Oil Cooler (incl. in RPO Z82)	V02	V02	V02	V02	V02	V02
Heavy-Duty Radiator	V01 ²	V01 ²	—	—	—	—
Below-Eye-Line Outside Rearview Mirrors	—	—	D44	D44	D44	D44
Heavy-Duty Shock Absorbers, Front and Rear	—	—	F51	F51	F51	F51
Electronic Speed Control/Comfortilt Steering Wheel	—	—	ZQ3	ZQ3	ZQ3	ZQ3

¹ Maximum gross trailer weight includes all passengers and cargo in the vehicle plus any cargo in the trailer. ² V01 N/A with V02 ³ 4.10 rear axle with LU2 engine.
NOTE: Chart entries in bold type are required options.