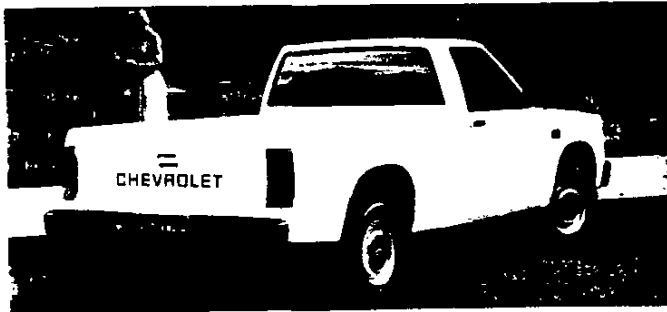
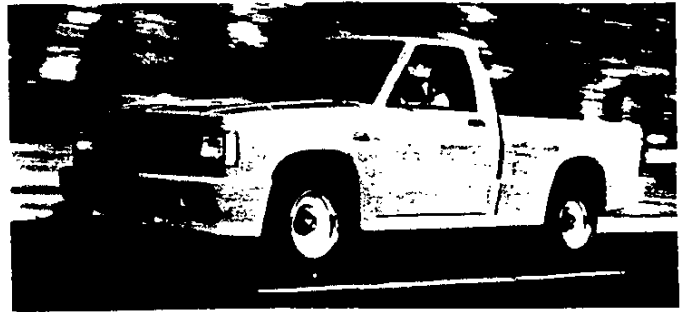
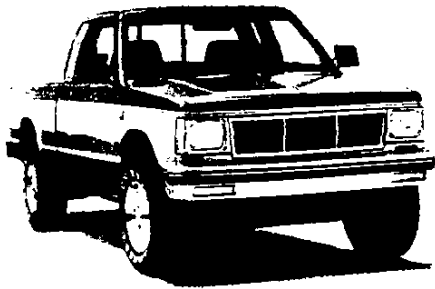

S/T PICKUP**CONTENTS**

	<u>Page</u>
MODELS	2
EL/SPECIAL (RPO X81) TRIM	3
S-10/T-10 SIERRA TRIM	4
DURANGO/HIGH SIERRA (RPO YC1) TRIM	5
TAHOE/SIERRA CLASSIC (RPO YC2) TRIM	6
POWERTRAINS	7
STANDARD SUSPENSION	11
OPTIONAL SUSPENSION	12
WHEELS AND TIRES	13
FRAME/STEERING/BRAKES	14
ELECTRICAL	15
COOLING	17
DIMENSIONS	18
OPTIONS	19
COLOR COMBINATIONS	23
EXTERIOR COLORS	B
INTERIOR TRIM	C
SEATS	D
TRAILERING	E

*Print indicates N/A is name in California Bold Print Indicates Not Available w/High Altitude Emissions

TWO-WHEEL DRIVE (S)

S-10/S-15 4X2 EL/SPECIAL REG. CAB FLEETSIDE/WIDESIDE (X81)	BOX	GVWR (LBS)	MAX. PAYLOAD (LBS)	PASS. CAP.	AVAIL. TRIM	STD. ENGINE/TRANS	OPT. ENGINE/TRANS	MODEL NUMBER
		6'	4200	1045	3	EL Only	2.5L L4 M5	-
S-10/S-15 4X2 REGULAR CAB FLEETSIDE/WIDESIDE	BOX	GVWR (LBS)	MAX. PAYLOAD (LBS)	PASS. CAP.	AVAIL. TRIM	STD. ENGINE/TRANS	OPT. ENGINE/TRANS	MODEL NUMBER
	6'	4200	1045	2.3	All	2.5L L4 M5	2.5L L4 A4 2.8L V6 M5 4.3L V6 A4/M5	S10603/E63/X96
	6'	4600	1416	2.3	All	2.5L L4 M5	2.5L L4 A4 2.8L V6 M5 4.3L V6 A4/M5	S10603/E63/X96/G51
	7.5'	4200	988	2.3	All	2.5L L4 M5	2.5L L4 A4 2.8L V6 M5 4.3L V6 A4/M5	S10803/E63
	7.5'	4600	1356	2.3	All	2.5L L4 M5	2.5L L4 A4 2.8L V6 M5	S10803/E63/G51
7.5'	4900	1541	2.3	All	4.3L V6 M5	4.3L V6 A4	S10803/E63/G51	
S-10/S-15 4X2 EXTENDED CAB FLEETSIDE/CLUB COUPE WIDESIDE	BOX	GVWR (LBS)	MAX. PAYLOAD (LBS)	PASS. CAP.	AVAIL. TRIM	STD. ENGINE/TRANS	OPT. ENGINE/TRANS	MODEL NUMBER
	6'	4200	970	2.3/4	All	2.5L L4 M5	2.5L L4 A4 2.8L V6 M5 4.3L V6 A4/M5	S10653/E63
6'	4600	1338	2.3/4	All	2.5L L4 M5	2.5L L4 A4 2.8L V6 M5 4.3L V6 A4/M5	S10653/E63/G51	

S-10/S-15 EL/SPECIAL REGULAR CAB FLEETSIDE/WIDESIDE (X81)

The EL/Special is an economy model for price-conscious buyers. It is only offered with a 6-foot cargo box and one trim level.

S-10/S-15 REGULAR CAB FLEETSIDE/WIDESIDE

The Regular Cab Fleetside/Wideside is available with a 6-foot or 7-foot 5-inch cargo box, three GVWR's and a variety of powertrains to meet the needs of today's compact truck buyer.

S-10/S-15 EXT CAB FLEETSIDE/CLUB COUPE WIDESIDE

The Extended Cab Fleetside Club Coupe Wideside model offers a cab design with a generous amount of secure in-cab storage behind the front seat. Optional folding jump seats are available to accommodate two additional passengers.

FOUR-WHEEL DRIVE (T)

T-10/T-15 4X4 REGULAR CAB FLEETSIDE/WIDESIDE	BOX	GVWR (LBS)	MAX. PAYLOAD (LBS)	PASS. CAP.	AVAIL. TRIM	STD. ENGINE/TRANS	OPT. ENGINE/TRANS	MODEL NUMBER
		6'	4650	964	2.3	All	4.3L V6 M5	4.3L V6 A4
	6'	5150	1497	2.3	All	4.3L V6 M5	4.3L V6 A4	T10603/E63/G51
	7.5'	4650	924	2.3	All	4.3L V6 M5	4.3L V6 A4	T10803/E63
	7.5'	5150	1455	2.3	All	4.3L V6 M5	4.3L V6 A4	T10803/E63/G51
T-10/T-15 4X4 EXTENDED CAB FLEETSIDE/CLUB COUPE WIDESIDE	BOX	GVWR (LBS)	MAX. PAYLOAD (LBS)	PASS. CAP.	AVAIL. TRIM	STD. ENGINE/TRANS	OPT. ENGINE/TRANS	MODEL NUMBER
	6'	4650	935	2.3/4	All	4.3L V6 M5	4.3L V6 A4	T10653/E63
6'	5150	1353	2.3/4	All	4.3L V6 M5	4.3L V6 A4	T10653/E63/G51	

T-10/T-15 REGULAR CAB FLEETSIDE/WIDESIDE

The Regular Cab Fleetside Wideside adds the versatility of 4-wheel drive to the availability of a 6-foot or 7-foot 5-inch cargo box, two GVWR's and a variety of powertrains to meet the needs of today's compact truck buyer.

T-10/T-15 EXTENDED CAB FLEETSIDE/CLUB COUPE WIDESIDE

The Extended Cab Fleetside Club Coupe Wideside model combines the versatility of 4-wheel drive with the secure in-cab storage and added passenger capacity of extended cab design.

Based on model weight. Total available for equipment, and cargo.

**EL/SPECIAL
(RPO X81)**

The EL/Special is a trim level designed to offer optimal economy for price-conscious truck buyers. The low sticker price reflects some omissions from the content of the Standard trim level. The EL/Special is available as a 2-wheel drive model only.

The following features are standard:



Some equipment shown may be optional or extra cost.

POWERTRAIN/CHASSIS

- 2.5-liter L4 Tech IV engine with Electronic Fuel Injection is standard. It produces 94 net horsepower @ 4400 rpm and 130 lb. ft. of net torque @ 3200 rpm.
- Floor-mounted 5-speed manual overdrive transmission.
- Single electric high-note horn.

- Front suspension is an independent design with computer-selected coil springs.
- 1.06" front stabilizer bar.
- Rear suspension is a leaf spring design.
- Power-assisted brakes. Front disc, rear drum.
- Rear-wheel anti-lock braking system.

- Manual steering.
- Frame is an all-welded ladder-type with channel design and boxed front-end section.
- 13-gallon (approx.) fuel tank.
- 525 CCA battery.
- 96 amp alternator.

EXTERIOR

- Front bumper painted low-gloss black.
- Molded plastic grille painted dark argent.
- Rectangular halogen headlamps.

- Bright metal hub covers (Chevrolet hub covers have black trim).
- Four P195/75R14 B/W all-season steel-belted radial tires.
- Four 14" x 6.00" wheels.
- Compact spare tire and steel spare wheel.

- Winch-type spare tire carrier mounted under frame at rear
- RH and LH fixed aerodynamic mirrors with adjustable heads, black finish. Mirror head size is 4.0" x 6.5"
- Welded pickup box with double wall construction and steel floor.

INTERIOR

- RH and LH padded armrests integral w/door panels.
- 3-passenger front bench seat with folding backrest and Custom Vinyl trim.
- RH coat hook.
- Black plastic door sill plate.

- Floor covering consists of embossed black rubber mats.
- Light tinted glass on all windows (S/T Regular Cab models only).
- Padded, color-keyed RH and LH sunshades.
- Gages include speedometer, odometer, fuel level, voltmeter, temperature, and oil pressure gages.

- 2-spoke steering wheel.
- 10-inch rearview mirror.
- Color-keyed headliner with partial roof coverage.
- Dome light with switches on LH and RH door jambs.
- Deluxe heater/defogger with side window defoggers.
- Cigarette lighter and ashtray light

S-10/T-10/SIERRA

The Standard S-10/T-10/Sierra trim level is the base trim level of the S/T series. It is designed to offer truck buyers a high level of standard features when purchasing a base-level truck.

The following features are standard. Bold type denotes equipment in addition to or replacing that of the EL/Special trim.



Some equipment shown may be optional or extra cost.

POWERTRAIN/CHASSIS

- 2.5-liter L4 Tech IV engine with Electronic Fuel Injection is standard. It produces 94 net horsepower @ 4400 rpm and 130 lb. ft. of net torque @ 3200 rpm.
- **4.3-liter Vortec V6 (LB4) engine with Electronic Fuel Injection (EFI) is standard on all 4-wheel drive (T) models. It produces 160 net horsepower @ 4000 rpm and 230 lb. ft. of net torque @ 2800 rpm.**
- Floor-mounted 5-speed manual overdrive transmission.
- Single electric high-note horn.
- Front suspension is an independent design with computer-selected coil springs on 2-wheel drive models, and **an independent design with torsion bars on 4-wheel drive models.**
- 1.06" front stabilizer bar on **2-wheel drive models and 1.25" on 4-wheel drive models.**
- Rear suspension is a leaf spring design.
- Power-assisted brakes. Front disc rear drum.
- Rear-wheel anti-lock braking system.
- Manual steering on 2-wheel drive models **and power steering on 4-wheel drive models and models with optional 4.3-liter engine.**
- Frame is an all-welded ladder-type with channel design and boxed front-end section.
- **20-gallon (approx.) fuel tank.**
- **Front tow hooks are standard on all 4-wheel drive (T) models.**
- 525 CCA battery.
- 96 amp alternator (w/2.5L engine)
- 85 amp alternator (w/4.3L engine)

EXTERIOR

- Front bumper painted low-gloss black (a rear bumper is available as an option only. See Options page for details).
- Molded plastic grille painted dark argent.
- Rectangular halogen headlamps.
- Two-wheel drive models have bright metal hub covers (Chevrolet hub covers have black trim).
- **Four-wheel drive models have 14-hole disc wheels with black hub ornaments. (14" x 6.00" wheels on 2-wheel drive models and 15" x 6.00" on 4-wheel drive models).**
- Four all-season steel-belted radial tires (see Wheels and Tires for size and type).
- **Full-size spare tire and steel spare wheel.**
- Winch-type spare tire carrier mounted under frame at rear.
- RH and LH fixed aerodynamic mirrors with adjustable heads, black finish. Mirror head size is 4.0" x 6.5".
- Welded pickup box with double wall construction and steel floor.

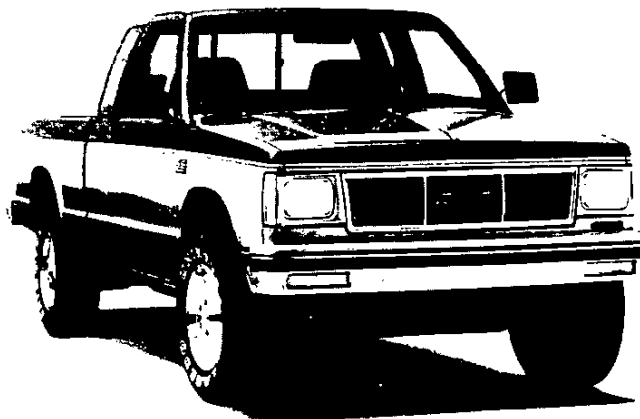
INTERIOR

- RH and LH padded armrests integral w/door panels.
- 3-passenger front bench seat with folding backrest and Custom Vinyl trim.
- RH coat hook. **Extended Cab/Club Coupe models have RH and LH coat hooks.**
- Black plastic door sill plate.
- Floor covering consists of embossed black rubber mats.
- Light tinted glass on all windows.
- Padded, color-keyed RH and LH sunshades.
- **Reclining seat backs on Extended Cab/Club Coupe models.**
- Gages include speedometer, odometer, fuel level, voltmeter, temperature, and oil pressure gages.
- 2-spoke steering wheel
- 10-inch rearview mirror.
- Color-keyed headliner with partial roof coverage.
- Dome lamp with switches on LH and RH door jambs.
- Deluxe heater-defogger with side window defoggers.
- **Chevrolet models feature an AM Radio with fixed mast antenna.**
- **GMC models feature an electronically tuned AM/FM stereo radio with seek-scan and digital clock with fixed mast antenna.**
- Cigarette lighter.

DURANGO/ HIGH SIERRA (RPO YC1)

The Durango/High Sierra trim level is an optional trim level for the S/T series. It is designed to offer truck buyers an increased level of comfort and convenience features compared to the Standard S-10/T-10/Sierra trim level.

The following features are standard. Bold type denotes equipment in addition to or replacing that of the Standard S-10/T-10/Sierra trim.



Some equipment shown may be optional or extra cost.

POWERTRAIN/CHASSIS

- 2.5-liter L4 Tech IV engine with Electronic Fuel Injection is standard. It produces 94 net horsepower @ 4400 rpm and 130 lb. ft. of net torque @ 3200 rpm.
- 4.3-liter Vortec V6 (LB4) engine with Electronic Fuel Injection (EFI) is standard on all 4-wheel drive (T) models. It produces 160 net horsepower @ 4000 rpm and 230 lb. ft. of net torque @ 2800 rpm.
- Floor-mounted 5-speed manual overdrive transmission.
- Single electric high-note horn.

- Front suspension is an independent design with computer-selected coil springs on 2-wheel drive models, and an independent design with torsion bars on 4-wheel drive models.
- 1.06" front stabilizer bar on 2-wheel drive models and 1.25" on 4-wheel drive models.
- Rear suspension is a leaf spring design.
- Power-assisted brakes. Front disc rear drum.
- Rear-wheel anti-lock braking system.

- Manual steering on 2-wheel drive models and power steering on 4-wheel drive models and models with optional 4.3-liter engine.
- Frame is an all-welded ladder type with channel design and boxed front-end section.
- 20-gallon (approx.) fuel tank.
- Front tow hooks are standard on all 4-wheel drive (T) models.
- 525 CCA battery.
- 96 amp alternator (w 2.5L engine)
- 85 amp alternator (w 4.3L engine)

EXTERIOR

- **Deluxe front chromed bumper with black rub strip (a rear bumper is available as an option only. See Options page for details).**
- **Durango/High Sierra nameplates.**
- Molded plastic grille painted **black with bright trim.**
- Rectangular halogen headlamps.
- **Swing out quarter windows.**

- Two-wheel drive models have bright metal hub covers (Chevrolet hub covers have black trim).
- Four-wheel drive models have 14-hole disc wheels with black hub ornaments. (14" x 6.00" wheels on 2-wheel drive models and 15" x 6.00" on 4-wheel drive models).
- Four all-season steel-belted radial tires (see Wheels and Tires for size and type).
- Full-size spare tire and steel spare wheel.

- **Wheel trim rings.**
- Winch-type spare tire carrier mounted under frame at rear
- RH and LH fixed aerodynamic mirrors with adjustable heads, black finish. Mirror head size is 40" x 6.5".
- Welded pickup box with double wall construction and steel floor

INTERIOR

- RH and LH padded armrests integral w/door panels.
- 3-passenger front bench seat with folding backrest and **choice of Custom Vinyl or Custom Cloth trim.**
- RH coat hook. Extended Cab/Club Coupe models have RH and LH coat hooks.
- Black plastic door sill plate.
- Floor covering consists of **color-keyed rubber mats.**
- Light tinted glass on all windows.

- Extended Cab/Club Coupe models feature swing-out quarter windows.
- **RH visor mirror.**
- Padded, color-keyed RH and LH sunshades.
- Reclining seat backs on Extended Cab/Club Coupe models.
- Gages include speedometer, odometer, fuel level, voltmeter, temperature, and oil pressure gages.
- **Headlamp warning buzzer.**
- **Deluxe, color-keyed steering wheel.**

- 10-inch rearview mirror.
- Color-keyed headliner with partial roof coverage.
- Dome lamp with switches on LH and RH door jambs.
- Deluxe heater-defogger with side window defoggers.
- Chevrolet models feature an AM radio with fixed mast antenna
- GMC models feature an electronically tuned AM-FM stereo radio with seek-scan and digital clock with fixed mast antenna
- Cigarette lighter and **ashtray light.**
- **Glove box light.**

TAHOE/ SIERRA CLASSIC (RPO YC2)

Tahoe/Sierra Classic trim level is an optional trim level for the S/T series. It is designed to offer truck buyers an increased level of comfort and convenience features compared to the Standard S-10/T-10/Sierra trim level and the optional Durango/High Sierra trim level.

The following features are standard. Bold type denotes equipment in addition to or replacing that of the Durango/High Sierra trim.



Some equipment shown may be optional or extra cost.

POWERTRAIN/CHASSIS

- 2.5-liter L4 Tech IV engine with Electronic Fuel Injection is standard. It produces 94 net horsepower @ 4400 rpm and 130 lb. ft. of net torque @ 3200 rpm.
- 4.3-liter Vortec V6 (LB4) engine with Electronic Fuel Injection (EFI) is standard on all 4-wheel drive (T) models. It produces 160 net horsepower @ 4000 rpm and 230 lb. ft. of net torque @ 2800 rpm.
- Floor-mounted 5-speed manual overdrive transmission.
- Single electric high-note horn.
- Front suspension is an independent design with computer selected coil springs on 2-wheel drive models, and an independent design with torsion bars on 4-wheel drive models.
- 1.06" front stabilizer bar on 2-wheel drive models, and 1.25" on 4-wheel drive models.
- Rear suspension is a leaf spring design.
- Power-assisted brakes. Front disc, rear drum.
- Rear-wheel anti-lock braking system.
- Manual steering on 2-wheel drive models and power steering on 4-wheel drive models and models with optional 4.3-liter engine.
- Frame is an all-welded ladder-type with channel design and boxed front-end section.
- 20-gallon (approx.) fuel tank.
- Front tow hooks are standard on all 4-wheel drive (T) models.
- 525 CCA battery.
- 96 amp alternator (w/2.5L engine)
- 85 amp alternator (w/4.3L engine)

EXTERIOR

- Deluxe front chromed bumper with black rub strip (a rear bumper is available as an option only. See Options page for details).
- **Tahoe/Sierra Classic nameplates.**
- Molded plastic grille painted black with bright trim.
- **Black plastic body side moldings with bright trim, and bright wheel opening lip moldings.**
- Rectangular halogen headlamps.
- Swing out quarter windows.
- **Two-wheel drive models have 14" x 6.00" argent rally wheels with black hub ornaments and bright trim rings.**
- **Four-wheel drive models have 15" x 7.00" cast aluminum wheels.**
- Four all-season steel-belted radial tires (see Wheels and Tires for size and type).
- Full-size spare tire and steel spare wheel.
- Winch-type spare tire carrier mounted under frame at rear.
- RH and LH black exterior below-eye-line type mirrors. Mirror-head size is 6.0" x 7.0".
- Welded pickup box with double wall construction and steel floor.
- **Engine compartment lamp.**

INTERIOR

- RH and LH padded armrests integral w/door panels. **Door panels consist of special custom cloth upper insert, carpeted lower insert and coin holder in LH door.**
- 3-passenger front bench seat with folding backrest and choice of Custom Vinyl or Custom Cloth trim.
- RH coat hook. Extended Cab/Club Coupe models have RH and LH coat hooks.
- Black plastic door sill plate.
- Floor covering consists of color-keyed rubber mats **over carpeting.**
- Light tinted glass on all windows.
- Extended Cab/Club Coupe models feature swing out quarter windows.
- RH visor mirror.
- Padded, color-keyed RH and LH sunshades.
- Reclining seat backs on Extended Cab/Club Coupe models.
- Gages include speedometer, odometer, fuel level, oil pressure, temperature and voltmeter.
- Headlamp warning buzzer.
- Deluxe, black steering wheel.
- 10-inch rearview mirror.
- Color-keyed headliner with **full** roof coverage.
- Dome lamp with switches on RH and LH door jambs.
- Deluxe heater-defogger with side window defoggers.
- Chevrolet models feature an AM radio with fixed mast antenna.
- GMC models feature an electronically tuned AM/FM stereo radio with seek-scan and digital clock with fixed mast antenna.
- Cigarette lighter and ashtray light

POWERTRAINS

1990
S/T PICKUP

KEY: S Standard O Optional
—Not Offered

RED Not Available w/California Emissions
BOLD Not Available w/High Altitude Emissions

H High Altitude Emissions Only
C California Emissions Only

MODEL	TRANSMISSION				AXLES					GVWR
	(MM4) MAN 4-SPD	(MM5) MAN 5-SPD	(MX1) AUTO 3-SPD	(MX0) AUTO 4-SPD	ECONOMY			POWER		
S-10/S-15 4X2 EL/SPECIAL REG. CAB. FLEETSIDE/WIDESIDE S10603/E63/X81					2.73	3.08	3.42	3.73	4.11	
ENGINE										
2.5L L4 (LN8)	—	S	—	—	—	—	—	S	—	4200

MODEL	TRANSMISSION				AXLES					GVWR
	(MM4) MAN 4-SPD	(MM5) MAN 5-SPD	(MX1) AUTO 3-SPD	(MX0) AUTO 4-SPD	ECONOMY			POWER		
S-10/S-15 4X2 REG. CAB FLEET- SIDE/WIDESIDE S10603/E63/X96					2.73	3.08	3.42	3.73	4.11	
ENGINE										
2.5L L4 (LN8)	—	S	—	—	—	—	—	S	—	4200
	—	—	—	O	—	—	—	S ¹	O ²	
	—	S	—	—	—	—	—	S	—	
2.8L V6 (LL2)	—	—	—	O	—	—	—	S ¹	O ²	4200
	—	S	—	—	—	—	S ¹	O ²	—	
	—	—	—	O	—	—	—	—	—	
4.3L V6 (LB4)	—	S ¹	—	—	S ¹	O	—	—	—	4200
	—	—	—	O	—	S ¹	O	—	—	
	—	S ¹	—	—	S ¹	O	—	—	—	

¹N A G80 Locking Differential ²Standard Ratio w/High Altitude Emissions

MODEL	TRANSMISSION				AXLES					GVWR
	(MM4) MAN 4-SPD	(MM5) MAN 5-SPD	(MX1) AUTO 3-SPD	(MX0) AUTO 4-SPD	ECONOMY			POWER		
S-10/S-15 4X2 REGULAR CAB FLEETSIDE/WIDESIDE S10803/E63					2.73	3.08	3.42	3.73	4.11	
ENGINE										
2.5L L4 (LN8)	—	S	—	—	—	—	—	S ¹	O	4200
	—	—	—	O	—	—	—	S ¹	O ²	
	—	S	—	—	—	—	—	—	S	
2.8L V6 (LL2)	—	—	—	O	—	—	—	S ¹	O ²	4200
	—	S	—	—	—	—	S ¹	O ²	—	
	—	—	—	O	—	—	—	—	—	
4.3L V6 (LB4)	—	S ¹	—	—	S ¹	O	—	—	—	4200
	—	—	—	O	—	S ¹	O	—	—	
	—	S ¹	—	—	S ¹	O	—	—	—	

¹N A G80 Locking Differential ²Standard Ratio w/High Altitude Emissions

MODEL	TRANSMISSION				AXLES					GVWR
	(MM4) MAN 4-SPD	(MM5) MAN 5-SPD	(MX1) AUTO 3-SPD	(MX0) AUTO 4-SPD	ECONOMY			POWER		
S-10/S-15 4X2 EXTENDED CAB FLEETSIDE/CLUB COUPE WIDESIDE S10653/E63					2.73	3.08	3.42	3.73	4.11	
ENGINE										
2.5L L4 (LN8)	—	S	—	—	—	—	—	S ¹	O	4200
	—	—	—	O	—	—	—	S ¹	O ²	
	—	S	—	—	—	—	—	—	S	
2.8L V6 (LL2)	—	—	—	O	—	—	—	S ¹	O ²	4200
	—	S	—	—	—	—	S ¹	O	O ²	
	—	—	—	O	—	—	—	—	—	
4.3L V6 (LB4)	—	S	—	—	S	O	—	—	—	4200
	—	—	—	O	—	S ¹	O	—	—	

¹N A G80 Locking Differential ²Standard Ratio w/High Altitude Emissions

**1990
S/T PICKUP**

POWERTRAINS

KEY: S Standard O Optional
— Not Offered

MAN MAN AUTO AUTO
BOLD Not Available w/High Altitude Emissions

H High Altitude Emissions Only
C California Emissions Only

MODEL	TRANSMISSION				AXLES					GVWR
	(MM4) MAN 4-SPD	(MM5) MAN 5-SPD	(MX1) AUTO 3-SPD	(MX0) AUTO 4-SPD	ECONOMY			POWER		
T-10/T-15 4X4 REGULAR CAB FLEETSIDE/WIDESIDE T10603/E63					2.73	3.08	3.42	3.73	4.11	
ENGINE										
4.3L V6 (LB4)	—	S ¹	—	—	—	S ¹	O ²	—	—	4650
	—	—	—	O	—	S ¹	O ²	—	—	
	—	S ¹	—	—	—	S ¹	O ²	—	—	5150
	—	—	—	O	—	S ¹	O ²	—	—	

N A P235 75R15 Tires or G80 Locking Differential ¹Standard Ratio w/High Altitude Emissions

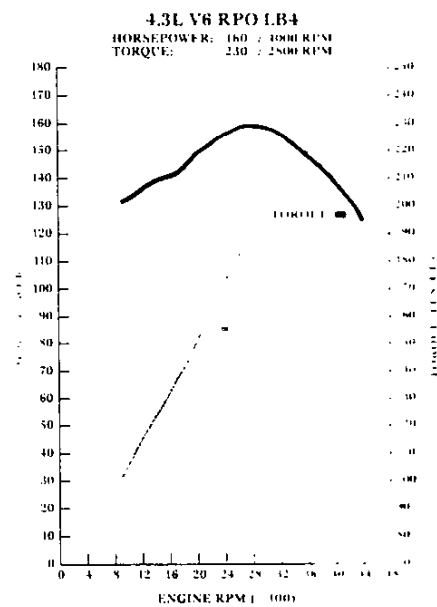
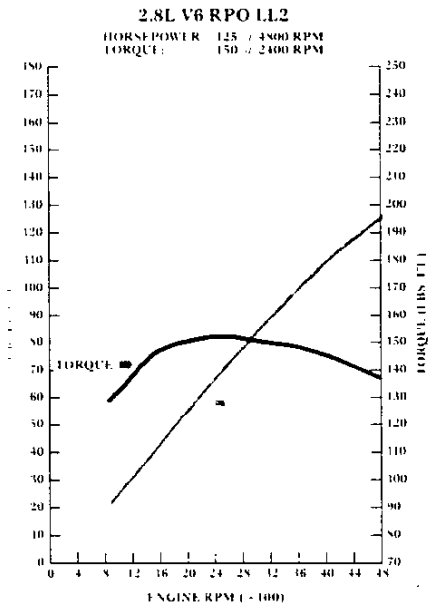
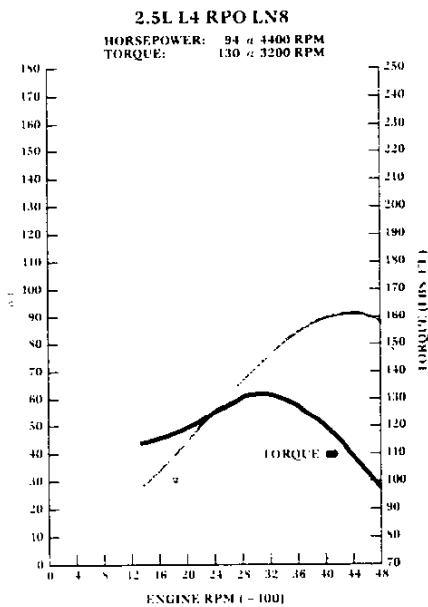
MODEL	TRANSMISSION				AXLES					GVWR
	(MM4) MAN 4-SPD	(MM5) MAN 5-SPD	(MX1) AUTO 3-SPD	(MX0) AUTO 4-SPD	ECONOMY			POWER		
T-10/T-15 4X4 REGULAR CAB FLEETSIDE/WIDESIDE T10803/E63					2.73	3.08	3.42	3.73	4.11	
ENGINE										
4.3L V6 (LB4)	—	S ¹	—	—	—	S ¹	O ²	—	—	4650
	—	—	—	O	—	S ¹	O ²	—	—	
	—	S ¹	—	—	—	S ¹	O ²	—	—	5150
	—	—	—	O	—	S ¹	O ²	—	—	

N A P235 75R15 Tires or G80 Locking Differential ¹Standard Ratio w/High Altitude Emissions

MODEL	TRANSMISSION				AXLES					GVWR
	(MM4) MAN 4-SPD	(MM5) MAN 5-SPD	(MX1) AUTO 3-SPD	(MX0) AUTO 4-SPD	ECONOMY			POWER		
T-10/T-15 4X4 EXTENDED CAB FLEETSIDE/CLUB COUPE WIDESIDE T10653/E63					2.73	3.08	3.42	3.73	4.11	
ENGINE										
4.3L V6 (LB4)	—	S ¹	—	—	—	S ¹	O ²	—	—	4650
	—	—	—	O	—	S ¹	O ²	—	—	
	—	S ¹	—	—	—	S ¹	O ²	—	—	5150
	—	—	—	O	—	S ¹	O ²	—	—	

N A P235 75R15 Tires or G80 Locking Differential ¹Standard Ratio w/High Altitude Emissions

HORSEPOWER AND TORQUE RATINGS			
ENGINES	2.5L I4	2.8L V6	4.3L V6
ORDERING CODE	LN8	LL2	LB4
SAE NET HORSEPOWER @ RPM	94 @ 4400	125 @ 4800	160 @ 4000
SAE NET TORQUE LB. FT. @ RPM	130 @ 3200	150 @ 2400	230 @ 2800
FUEL SYSTEM	EFI	EFI	EFI
CLUTCH SIZE (IN.)	9.13	9.13	11.0
STD. Battery (Cold Cranking Amps @ 0°F)	525	525	525



REAR AXLES

REAR AXLE: Make and Capacity (lbs.)	GM 2700				
PINION & RING GEAR: Type	Hypoid				
Ratio	2.73	3.08	3.42	3.73	4.11
Pinion Teeth	15	13	12	11	9
Ring Gear Teeth	41	40	41	41	37
Ring Gear Dia. (in.)	7.6	7.6	7.576	7.5	7.5
DIFFERENTIAL: Type	2 Pinion Tapered Roller				
Bearings, Type	Tapered Roller				
AXLE SHAFTS: Type	Semi-Floating Integral Shaft and Drive Flange				
Min. Diameter (in.)	—				
HOUSING @ SPRING SEAT: Section Diameter and Thickness (in.)	2.69 x 0.116-0.175				

FRONT AXLES—T MODELS

FRONT AXLE: Make and Capacity (lbs.)	GM 2700	
PINION & RING GEARS: Type	Hypoid	
Ratio	3.08	—
Pinion Teeth	11	—
Ring Gear Teeth	40	—
Ring Gear Dia. (in.)	7.25	—
DIFFERENTIAL: Type	2 Pinion Tapered Roller	
Bearings, Type	Tapered Roller	
LUBRICANT CAPACITY (pints)	—	

4.3-liter engine requires 3.42 axle w/ 7.6" ring gear. 2.8-liter engine requires 3.42 axle w/ 7.5" ring gear.

TRANSMISSION GEAR RATIOS

MANUAL			
TRANSMISSION MODEL	MANUAL 5-SPEED w/OVERDRIVE	MANUAL 5-SPEED w/OVERDRIVE	MANUAL 5-SPEED w/OVERDRIVE
ENGINE APPLICATION	2.5L LNS	2.8L LL2	4.3L LB4
RPO CODE	MM5	MM5	MM5
SYNCHRONIZED SPEEDS	1/2/3/4/5	1/2/3/4/5	1/2/3/4/5
GEAR RATIOS			
First	3.76	4.03	4.02
Second	2.18	2.37	2.32
Third	1.42	1.49	1.40
Fourth	1.00	1.00	1.00
Fifth	.72	.72	.83
Reverse	3.76	3.76	3.74
GEAR TYPE			
Forward:	Helical	Helical	Helical
Reverse:	Spur	Spur	Spur
Center Distance (mm)	77	77	85
POWER TAKE-OFF DATA			
Opening Type:	—	—	—
Location:	—	—	—
Drive Gear:	—	—	—
PTO Gear RPM @ 1000 Engine RPM:	—	—	—
PTO Pitch Line Velocity @ 1000: Engine RPM:	—	—	—
LUBRICANT CAPACITY (pints)			
Oil	4.4	4.4	3.7

AUTOMATIC	
TRANSMISSION MODEL	AUTOMATIC 4-SPEED w/OVERDRIVE 4L60
RPO CODE	MX0
GEAR RATIOS	
First	3.06
Second	1.63
Third	1.00
Fourth	.70
Reverse	2.29
GEAR TYPE	Planetary
TORQUE CONVERTER	
Element Types	Pump/Stator/Turbine
Lock-up Clutch	Automatic
POWER TAKE-OFF DATA	
Opening Type:	—
Location:	—
Drive Gear:	—
PTO Gear RPM @ 1000 Engine RPM:	—
PTO Pitch Line Velocity @ 1000 RPM:	—
LUBRICANT CAPACITY (pints)	
Dry Fill	19
Refill	10

TRANSFER CASE

MODELS	
TRANSFER CASE MODEL	NEW PROCESS 231
AVAILABILITY	T-10/T-15
RATIOS: Hi Range Lo Range	1.00:1 2.72:1
LEVER POSITIONS	4-Lo (All-wheel Underdrive) N (Neutral) 2-Hi (Rear-wheel Drive) 4-Hi (All-wheel Drive)
LEVER LOCATION	Rear of Transmission at Center of Floor
POWER TAKE-OFF DATA:	
Opening Location	—
OIL CAPACITY (pints)	2.2

STD SUSPENSION

1990
S/T PICKUP

TWO-WHEEL DRIVE (S)

FOUR-WHEEL DRIVE (T)

MODEL	S-10/S-15 4 X 2 EL/ SPECIAL REG. CAB FLEETSIDE/ WIDESIDE	S-10/S-15 4 X 2 REG. CAB FLEETSIDE/ WIDESIDE	S-10/S-15 4 X 2 REG. CAB FLEETSIDE/ WIDESIDE	S-10/S-15 4 X 2 EXT. CAB FLEETSIDE/ CLUB COUPE WIDESIDE	T-10/T-15 4 X 4 REG. CAB FLEETSIDE/ WIDESIDE	T-10/T-15 4 X 4 REG. CAB FLEETSIDE/ WIDESIDE	T-10/T-15 4 X 4 EXT. CAB FLEETSIDE/ CLUB COUPE WIDESIDE
MODEL NUMBER	S10603/E63/ X81	S10603/E63/ X96	S10803/E63	S10653/E63	T10603/E63	T10803/E63	T10653/E63
SUSPENSION (STD)							
PAYLOAD (Max. lbs.) ¹	1045	1045	988	970	963	924	835
GVWR: (lbs.)	4200	4200	4200	4200	4650	4650	4650
GAWR (lbs.): Front Rear	2500 2300	2500 2300	2500 2300	2500 2300	2700 2300	2700 2300	2700 2300
FRONT SUSPENSION: Type Standard Spring Capacity (Tot. lbs. each)	Ind. Coil Spring 1250	Ind. Coil Spring 1250	Ind. Coil Spring 1250	Ind. Coil Spring 1250	Torsion Bar 1350	Torsion Bar 1350	Torsion Bar 1350
Front Shock Absorbers Piston Diameter (mm) STD/OPT	25/—	25/32	25/32	25/32	25/32	25/32	25/32
Front Stabilizer Bar Diameter (in.) STD/OPT	1.06/—	1.06/—	1.06/—	1.06/—	1.25/—	1.25/—	1.25/—
REAR SUSPENSION: Type	Semi-Elliptic 2-Stage Multi-Leaf	Semi-Elliptic 2-Stage Multi-Leaf	Semi-Elliptic 2-Stage Multi-Leaf	Semi-Elliptic 2-Stage Multi-Leaf	Semi-Elliptic 2-Stage Multi-Leaf	Semi-Elliptic 2-Stage Multi-Leaf	Semi-Elliptic 2-Stage Multi-Leaf
Standard Spring Capacity (Tot. lbs. each) Leaves Per Spring Leaf Total Thickness (in.)	1150 4 1.35	1150 4 1.35	1150 4 1.35	1150 4 1.35	1150 4 1.35	1150 4 1.35	1150 4 1.35
Rear Shock Absorbers Piston Diameter (mm) STD/OPT	25/—	25/32	25/32	25/32	25/32	25/32	25/32
FRONT AXLE: Type Make Maximum Capacity (lbs.) Standard Hub Locks Pinion/Ring Gear Type	Independent — 2500 — —	Independent — 2500 — —	Independent — 2500 — —	Independent — 2500 — —	Independent GM 2700 Central Locking Disconnect Hypoid	Independent GM 2700 Central Locking Disconnect Hypoid	Independent GM 2700 Central Locking Disconnect Hypoid
REAR AXLE: Type Make Maximum Capacity (lbs.) Pinion/Ring Gear Type	Semi-Floating GM 2700 Hypoid	Semi-Floating GM 2700 Hypoid	Semi-Floating GM 2700 Hypoid	Semi-Floating GM 2700 Hypoid	Semi-Floating GM 2700 Hypoid	Semi-Floating GM 2700 Hypoid	Semi-Floating GM 2700 Hypoid
STANDARD TIRES: Tire Capacity (lbs. each) Front/Rear Inflation (PSI) Max.	Tubeless SBR P195/75R14 BW 1272 35	Tubeless SBR P195/75R14 BW 1272 35	Tubeless SBR P195/75R14 BW 1272 35	Tubeless SBR P195/75R14 BW 1272 35	Tubeless SBR P205/75R15 BW 1453 35	Tubeless SBR P205/75R15 BW 1453 35	Tubeless SBR P205/75R15 BW 1453 35
WHEELS: Size (in.) Front/Rear Wheel Capacity (lbs. each) Bolt Holes Bolt Circle Diameter (in.) Offset (mm) Revolutions per mile @ 45 MPH	14 x 6.00 1393 5 4.75 0 817	14 x 6.00 1393 5 4.75 0 817	14 x 6.00 1393 5 4.75 0 817	14 x 6.00 1393 5 4.75 0 817	15 x 6.00 1453 5 4.75 50 769	15 x 6.00 1453 5 4.75 50 769	15 x 6.00 1453 5 4.75 50 769

¹Based on model weight. Total available for equipment and cargo.

**1990
S/T PICKUP**

OPT SUSPENSION

TWO-WHEEL DRIVE (S) FOUR-WHEEL DRIVE (T)

MODEL	S-10/S-15 4 X 2 EL/ SPECIAL REG. CAB FLEETSIDE/ WIDESIDE	S-10/S-15 4 X 2 REG. CAB FLEETSIDE/ WIDESIDE	S-10/S-15 4 X 2 REG. CAB FLEETSIDE/ WIDESIDE		S-10/S-15 4 X 2 EXT. CAB FLEETSIDE/ CLUB COUPE WIDESIDE	T-10/T-15 4 X 4 REG. CAB FLEETSIDE/ WIDESIDE	T-10/T-15 4 X 4 REG. CAB FLEETSIDE/ WIDESIDE	T-10/T-15 4 X 4 EXT. CAB FLEETSIDE/ CLUB COUPE WIDESIDE
MODEL NUMBER	S10603/E63/ X81	S10603/E63/ X96	S10803/E63		S10653/E63	T10603/E63	T10803/E63	T10653/E63
SUSPENSION (OPT)								
Option	—	G51	G51	G51	G51	G51	G51	G51
PAYLOAD (Max. lbs.) ¹	—	1416	1356	1541	1338	1497	1455	1353
GVWR (lbs.)	—	4600	4600	4900	4600	5150	5150	5150
GAWR (lbs.): Front	—	2500	2500		2500	2700	2700	2700
Rear	—	2700	2700		2700	2700	2700	2700
FRONT SUSPENSION:								
Type	—	Ind. Coil Spring	Ind. Coil Spring		Ind. Coil Spring	Ind. Torsion Bar	Ind. Torsion Bar	Ind. Torsion Bar
Standard Spring Capacity (Tot. lbs. each)	—	1250	1250		1250	1350	1350	1350
Front Shock Absorbers Piston Diameter (mm) STD/OPT	—	25/32	25.32/46		25/32	32/46	32/46	32/46
Front Stabilizer Bar Diameter (in.) STD/OPT	—	1.06/—	1.06/—	1.25/—	1.06/—	1.25/—	1.25/—	1.25/—
REAR SUSPENSION:								
Type	—	Semi-Elliptic 2-Stage Multi-Leaf	Semi-Elliptic 2-Stage Multi-Leaf		Semi-Elliptic 2-Stage Multi-Leaf	Semi-Elliptic 2-Stage Multi-Leaf	Semi-Elliptic 2-Stage Multi-Leaf	Semi-Elliptic 2-Stage Multi-Leaf
Standard Spring Capacity (Tot. lbs. each)	—	1350	1350		1350	1350	1350	1350
Leaves Per Spring	—	4	4		4	4	4	4
Leaf Total Thickness (in.)	—	1.48	1.48		1.48	1.48	1.48	1.48
Rear Shock Absorbers Piston Diameter (mm) STD/OPT	—	32/46	32/46		32/—	32/46	32/46	32/46
FRONT AXLE:								
Type	—	Independent	Independent		Independent	Independent	Independent	Independent
Make	—	—	—		—	GM 2700	GM 2700	GM 2700
Maximum Capacity (lbs.)	—	2500	2500		2500	—	—	—
Standard Hub Locks	—	—	—		—	Central Locking Disconnect Hypoid	Central Locking Disconnect Hypoid	Central Locking Disconnect Hypoid
Pinion/Ring Gear Type	—	—	—		—	—	—	—
REAR AXLE:								
Type	—	Semi-Floating	Semi-Floating		Semi-Floating	Semi-Floating	Semi-Floating	Semi-Floating
Make	—	GM	GM		GM	GM	GM	GM
Maximum Capacity (lbs.)	—	2700	2700		2700	2700	2700	2700
Pinion/Ring Gear Type	—	Hypoid	Hypoid		Hypoid	Hypoid	Hypoid	Hypoid
STANDARD TIRES:								
	—	Tubeless SBR P205/75R14 BW	Tbls. SBR P195/ 75R14 BW	Tbls. SBR P205/ 75R14 BW	Tubeless SBR P195/75R14 BW	Tubeless SBR P205/75R15 BW	Tubeless SBR P205/75R15 BW	Tubeless SBR P205/75R15 BW
Tire Capacity (lbs. each)	—	1392	1272	1392	1272	1453	1453	1453
Front, Rear	—	35	35	35	35	35	35	35
Inflation (PSI) Max.	—	35	35	35	35	35	35	35
WHEELS:								
Size (in.) Front, Rear	—	14 x 6.00	14 x 6.00	14 x 6.00	14 x 6.00	15 x 6.00	15 x 6.00	15 x 6.00
Wheel Capacity (lbs. each)	—	1393	1393	1393	1393	1453	1453	1453
Bolt Holes	—	5	5	5	5	5	5	5
Bolt Circle Diameter (in.)	—	4.75	4.75	4.75	4.75	4.75	4.75	4.75
Offset (mm)	—	0	0	0	0	50	50	50
Revolutions per mile @ 45 MPH	—	798	817	798	817	769	769	769

¹Based on model weight. Total available for equipment and cargo.

WHEELS AND TIRES

1990
S/T PICKUP

KEY: -- Not Available
AS - All-Season
SBR - Steel-Belted Radial Ply
BW - Blackwall
WW - Whitewall

WL - White Lettered
HWY - Highway
ON-OFF - On-Off Road
WOL - White Outline Lettered

P-METRIC RADIAL TIRES
The tire load range in P-Metric Series Radial Tires is not identified with letters such as B, C, and D or with ply rating as in the Alpha system. P-Metric tires are offered with a Standard Load Rating or Extra Load Rating which is related to tire pressure.—Standard Load—35 psi Extra Load—45 psi
Maximum tire pressure will be stamped on the tire sidewall in metric kilo Pascals (kPa) and pounds per square inch (PSI). In metric tire pressure, 7 kPa (10 psi) are equivalent to 1 lb. per sq. in. (PSI). The tire maximum load capacity will also be stamped on the tire sidewall in kilograms and pounds.

TIRE SIZE	TYPE	RPO	PLY	LOAD RANGE	TIRE CAPACITY (LBS. EA.)	INFLATION (PSI) MAX.	WHEEL SIZE (IN.)	WHEEL CAPACITY (LBS. EA.)	BOLT HOLES	BOLT CIRCLE DIA. (IN.)	OFFSET (MM)	REV. PER MILE @ 45 MPH
P195/75R14	AS SBR BW	QMW	'	B	1272	35	14 x 6.0	1393	5	4.75	0	817
P205/75R14	AS SBR BW	QFT	'	B	1392	35	14 x 6.0	1393	5	4.75	0	798
P205/75R14	AS SBR WL	QSA	'	B	1392	35	14 x 6.0	1393	5	4.75	0	798
P215/65R15	HWY SBR WL	QYH	2 Poly 2 Stl 1 Nyl	B	1372	35	15 x 7.0	1453	5	4.75	50	801
P205/75R15	AS SBR BW	QCE	'	B	1453	35	15 x 6.0	1453	5	4.75	50	799
P205/75R15	ON-OFF SBR WL	QJL	2 Poly 2 Stl	B	1453	35	15 x 6.0	1453	5	4.75	50	800
P205/75R15	AS SBR WL	QCF	'	B	1453	35	15 x 6.0	1453	5	4.75	50	799
P205/75R15	ON-OFF SBR BW	QJT	2 Poly 2 Stl	B	1453	35	15 x 6.0	1453	5	4.75	50	800
P235/75R15	ON-OFF SBR WL	QEB	2 Poly 2 Stl	B	1843	35	15 x 7.0	1453	5	4.75	50	800

*Varies with tire manufacturer

S/T OPTIONAL WHEELS

RPO	DESCRIPTION	WHEEL SIZE (IN.)	CAPACITY	BOLT HOLES	BOLT CIRCLE DIA. (IN.)	OFFSET (MM)
N90	Wheels—Aluminum, Cast ¹	15 x 7.0	1453	5	4.75	
ZJ7	Wheels—Rally (Adds Trim Rings and Special Hub Caps) ¹	14 x 6.0	1393	5	4.75	
5Z7	Wheels—Steel, Black—Baja ¹	15 x 7.0	1453	5	4.75	
5P2	Wheels—Aluminum, Cast—Baja ²	15 x 7.0	1453	5	4.75	

¹Steel spare wheel. ²Steel spare wheel except with box mount 5P3 which includes an aluminum spare wheel.

TWO-WHEEL DRIVE (S) FOUR-WHEEL DRIVE (T)

MODEL	S-10/S-15 4 X 2 FI./ SPECIAL REG. CAB FLEETSIDE/ WIDESIDE	S-10/S-15 4 X 2 REG. CAB FLEETSIDE/ WIDESIDE	S-10/S-15 4 X 2 REG. CAB FLEETSIDE/ WIDESIDE	S-10/S-15 4 X 2 EXT. CAB FLEETSIDE/ CLUB COUPE WIDESIDE	T-10/T-15 4 X 4 REG. CAB FLEETSIDE/ WIDESIDE	T-10/T-15 4 X 4 REG. CAB FLEETSIDE/ WIDESIDE	T-10/T-15 4 X 4 EXT. CAB FLEETSIDE/ CLUB COUPE WIDESIDE
MODEL NUMBER	S10603/E63/ X81	S10603/E63/ X96	S10803/E63	S10653/E63	T10603/E63	T10803/E63	T10653/E63
STD FRAME							
Side Rail Dimensions: Width (in.)	2.34	2.34	2.34	2.34	2.34	2.34	2.34
Depth (in.)	5.16	5.16	5.16	5.16	6.50	6.50	6.50
Thickness (in.)	.118	.118	.134	.134	.118	.134	.134
Section Modulus Rails only	1.94	1.94	2.19	2.19	2.56	2.91	2.91
RBM of Frame	75,660	75,660	85,410	85,410	99,840	113,490	113,490
Width Over Rails Front (in.)	30.9	30.9	30.9	30.9	30.9	30.9	30.9
Rear (in.)	40.35	40.35	40.35	40.35	40.35	40.35	40.35
Overall Length of Rail (in.)	170.31	170.31	186.26	184.96	170.31	186.26	184.96
STEERING							
Type	Manual; Recirculating Ball Gear	Manual; Recirculating Ball Gear	Manual; Recirculating Ball Gear	Manual; Recirculating Ball Gear	Variable Ratio Integral Power	Variable Ratio Integral Power	Variable Ratio Integral Power
Steering Ratio On Center/At Lock Opr: Variable Ratio Integral Power	24/28.1:1 —	24/28.1:1 17.5:1 ¹	24/28.1:1 17.5:1 ¹	24/28.1:1 13/15.0:1	13/16.0:1 —	13/16.0:1 —	13/16.0:1 —
Turning Diameter: Curb-To-Curb (ft.) Wall-To-Wall (ft.)	36.8 38.7	36.8 38.7	39.7 41.5	41.1 43.0	37.7 39.4	40.5 42.3	42.7 44.5

¹ ZQ8 Sport Chassis Pkg. has 13:15.0:1.

TWO-WHEEL DRIVE (S) FOUR-WHEEL DRIVE (T)

MODEL	S-10/S-15 4 X 2 EL/ SPECIAL REG. CAB FLEETSIDE/ WIDESIDE	S-10/S-15 4 X 2 REG. CAB FLEETSIDE/ WIDESIDE	S-10/S-15 4 X 2 REG. CAB FLEETSIDE/ WIDESIDE	S-10/S-15 4 X 2 EXT. CAB FLEETSIDE/ CLUB COUPE WIDESIDE	T-10/T-15 4 X 4 REG. CAB FLEETSIDE/ WIDESIDE	T-10/T-15 4 X 4 REG. CAB FLEETSIDE/ WIDESIDE	T-10/T-15 4 X 4 EXT. CAB FLEETSIDE/ CLUB COUPE WIDESIDE
MODEL NUMBER	S10603/E63/ X81	S10603/E63/ X96	S10803/E63	S10653/E63	T10603/E63	T10803/E63	T10653/E63
BRAKES							
GVWR (lbs.)	4200	4200 4600	4200/4600/ 4900	4200 4600	4650/ 5150	4650/ 5150	4650/ 5150
Type	Vac. Power Front Disc/ Rear Drum With Anti-Lock System	Vac. Power Front Disc/ Rear Drum With Anti-Lock System	Vac. Power Front Disc/ Rear Drum With Anti-Lock System	Vac. Power Front Disc/ Rear Drum With Anti-Lock System	Vac. Power Front Disc/ Rear Drum With Anti-Lock System	Vac. Power Front Disc/ Rear Drum With Anti-Lock System	Vac. Power Front Disc/ Rear Drum With Anti-Lock System
Booster (Diaphragm Diameter) (in.)	9.4 Single	9.4 Single ¹	9.4 Single ¹	9.4 Single ¹	9.4 x 7.9 Tandem ¹	9.4 x 7.9 Tandem ¹	9.4 x 7.9 Tandem ¹
Front Rotor Size (Diameter x Thickness) (in.)	10.5 x 1.03	10.5 x 1.03	10.5 x 1.03	10.5 x 1.03	10.5 x 1.03	10.5 x 1.03	10.5 x 1.03
Front Facing Contact Per Axle (sq. in.)	31.68	31.68	31.68	31.68	31.68	31.68	31.68
Rear Drum Size (Diameter x Width) (in.)	9.5 x 2.0	9.5 x 2.0	9.5 x 2.0	9.5 x 2.0	9.5 x 2.0	9.5 x 2.0	9.5 x 2.0
Rear Facing Contact Per Axle (sq. in.)	63.73	63.73	63.73	63.73	63.73	63.73	63.73
Parking Brake Type	Cable To Rear Wheels	Cable To Rear Wheels	Cable To Rear Wheels	Cable To Rear Wheels	Cable To Rear Wheels	Cable To Rear Wheels	Cable To Rear Wheels

¹ 9.4 x 7.9 Tandem with LB4 4.3L V6 engine. 7.9 x 7.9 Tandem with LN8 2.5L or LL2 2.8L engine @ 4600 lb GVWR

TWO-WHEEL DRIVE (S)

FOUR-WHEEL DRIVE (T)

MODEL	S-10/S-15 4 X 2 EL/ SPECIAL REG. CAB FLEETSIDE/ WIDESIDE	S-10/S-15 4 X 2 REG. CAB FLEETSIDE/ WIDESIDE	S-10/S-15 4 X 2 REG. CAB FLEETSIDE/ WIDESIDE	S-10/S-15 4 X 2 EXT. CAB FLEETSIDE/ CLUB COUPE WIDESIDE	T-10/T-15 4 X 4 REG. CAB FLEETSIDE/ WIDESIDE	T-10/T-15 4 X 4 REG. CAB FLEETSIDE/ WIDESIDE	T-10/T-15 4 X 4 EXT. CAB FLEETSIDE/ CLUB COUPE WIDESIDE
MODEL NUMBER	S10603/E63/ X81	S10603/E63/ X96	S10803/E63	S10653/E63	T10603/E63	T10803/E63	T10653/E63

ELECTRICAL

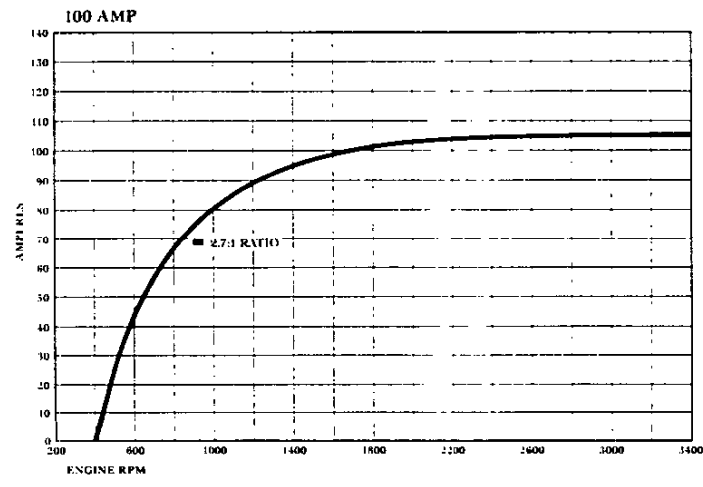
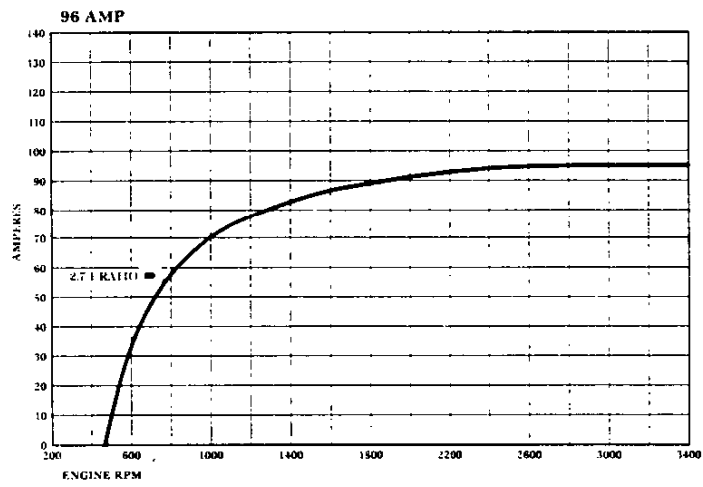
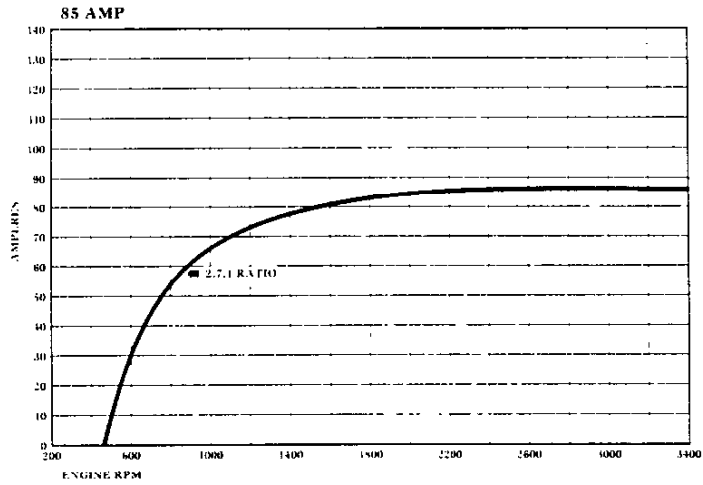
ENGINE STD./OPT.	2.5L	2.5L	2.8L/ 4.3L	2.5L	2.8L/ 4.3L	2.5L	2.8L/ 4.3L	4.3L	4.3L	4.3L
STANDARD BATTERY: Cold Cranking Amps @ 0°F @ -20°F Reserve Capacity Minutes @ 30°F	525 405 90	525 405 90	525 405 90	525 405 90	525 405 90	525 405 90	525 405 90	525 405 90	525 405 90	525 405 90
AUXILIARY BATTERY: Cold Cranking Amps @ 0°F @ -20°F Reserve Capacity Minutes @ 30°F	— — —	UA1 630 490 115	UA1 630 490 115	UA1 630 490 115	UA1 630 490 115	UA1 630 490 115	UA1 630 490 115	UA1 630 490 115	UA1 630 490 115	UA1 630 490 115
STANDARD ALTERNATOR: Max. Capacity (Amps) Max Watts @ 12 Volts Nominal Amp @ Idle (Approx.) Drive Pulley Ratio Model Number	96 1152 26 2.7:1 CS130	96 1152 26 2.7:1 CS130	85 1020 30 2.7:1 CS130	96 1152 26 2.7:1 CS130	85 1020 30 2.7:1 CS130	96 1152 26 2.7:1 CS130	85 1020 30 2.7:1 CS130	85 1020 30 2.7:1 CS130	85 1020 30 2.7:1 CS130	85 1020 30 2.7:1 CS130
OPTIONAL ALTERNATOR:² Max. Capacity (Amps) Max. Watts @ 12 Volts Nominal Amp @ Idle (Approx.) Drive Pulley Ratio Model Number	— — — — —	— — — — —	— — — — —	— — — — —	— — — — —	— — — — —	— — — — —	SEO 5Z7 ¹ 100 1200 36 2.7:1 CS130	SEO 5Z7 ¹ 100 1200 36 2.7:1 CS130	SEO 5Z7 ¹ 100 1200 36 2.7:1 CS130

¹ Baja Package SEO 5Z7 with LB4 4.3L V6 engine.

²Note: This Alternator is Available Only as Part of 5Z7

ALTERNATOR CURVES

TWO-WHEEL DRIVE (S) AND FOUR-WHEEL DRIVE (T)
(Refer to Alternator Chart for Availability)



COOLING

1990
S/T PICKUP

KEY: Reg Type Manual Trans and Automatic Trans Red Type Manual Trans Only Bold Type Automatic Trans Only

TWO-WHEEL DRIVE (S)			FOUR-WHEEL DRIVE (T)		
MODEL	S-10/S-15 EL/SPECIAL 4 X 2 REG. CAB PICKUP FLEETSIDE/ WIDESIDE	S-10/S-15 REG. CAB/ EXT. CAB FLEETSIDE/ CLUB COUPE WIDESIDE			T-10/T-15 REG. CAB/ EXT. CAB FLEETSIDE/ CLUB COUPE WIDESIDE
MODEL NUMBER	S10603/E63/X81	S10603/E63/X96 S10803/E63/S10653/E63			T10603/E63/T10803/E63 T10653/E63
STANDARD COOLING SYSTEM					
ENGINE	2.5L	2.5L		4.3L	4.3L
Standard Radiator Thickness (in.)	.98	.98		.93	.93
Total System Cap. (gal.)	2.9	2.9		3.0	3.0
Standard Fan (No. Blades x Diameter x Pitch)	5 x 15.0 x 2.05	5 x 15.0 x 2.05		3 x 18 x 2.0	3 x 18 x 2.0
OPTIONAL COOLING SYSTEMS					
ENGINE	2.5L	2.5L	2.8L	4.3L	4.3L
AUTOMATIC TRANS.	—	MX0	—	—	—
Radiator Thickness (in.)	—	.98	—	—	—
Total Systems Cap. (gal.)	—	2.9	—	—	—
Fan (No. Blades x Diameter x Pitch)	—	5 x 15.0 x 2.05	—	—	—
OPT. H.D. RADIATOR	—	V01	—	V01	V01
Radiator Thickness (in.)	—	.98	—	.93	.93
Total System Cap. (gal.)	—	2.9	—	3.0	3.0
Fan (No. Blades x Diameter x Pitch)	—	5 x 15.0 x 2.05	—	3 x 18 x 2.0	3 x 18 x 2.0
OPT. AIR CONDITIONING	C60	C60		C60	C60
Radiator Thickness (in.)	.98	.98		.93	.93
Total System Cap. (gal.)	2.9	2.9		3.0	3.0
Fan (No. Blades x Diameter x Pitch)	5 x 16.9/15 ¹ x 2.64	5 x 16.9/15 ¹ x 2.64		5 x 19 x 2.5	5 x 19 x 2.5
OPT. ENG. OIL COOLER	—	—	—	KC4	KC4
Radiator Thickness (in.)	—	—	—	.93	.93
Total System Cap. (gal.)	—	—	—	2.9	2.9
Fan (No. Blades x Diameter x Pitch)	—	—	—	3 x 18 x 2.0	3 x 18 x 2.0
OPT. H.D. RADIATOR AND TRANS. OIL COOLER	—	—	—	V02	V02
Radiator Thickness (in.)	—	—	—	1.34	1.34
Total System Cap. (gal.)	—	—	—	3.0	3.0
Fan (No. Blades x Diameter x Pitch)	—	—	—	3 x 18 x 2.0	3 x 18 x 2.0

¹Variable diameter

TWO-WHEEL DRIVE (S)

FOUR-WHEEL DRIVE (T)

MODEL	S-10/S-15 4 X 2 EL/ SPECIAL REG. CAB FLEETSIDE/ WIDESIDE	S-10/S-15 4 X 2 REG. CAB FLEETSIDE/ WIDESIDE	S-10/S-15 4 X 2 REG. CAB FLEETSIDE/ WIDESIDE	S-10/S-15 4 X 2 EXT. CAB FLEETSIDE/ CLUB COUPE WIDESIDE	T-10/T-15 4 X 4 REG. CAB FLEETSIDE/ WIDESIDE	T-10/T-15 4 X 4 REG. CAB FLEETSIDE/ WIDESIDE	T-10/T-15 4 X 4 EXT. CAB FLEETSIDE/ CLUB COUPE WIDESIDE
MODEL NUMBER	S10603/E63/ X81	S10603/E63/ X96	S10803/E63	S10653/E63	T10603/E63	T10803/E63	T10653/E63
EXTERIOR DIMENSIONS:							
BODY:							
Wheelbase (in.)	108.3	108.3	117.9	122.9	108.3	117.9	122.9
Overall Length (in.)	178.2	178.2	194.2	192.8	178.2	194.2	192.8
Overall Height (in.)	61.3	61.3	61.3	61.3	63.4	63.4	63.4
Maximum Width (in.)	64.8	64.8	64.8	64.8	64.8	64.8	64.8
Bumper To Axle—Front (in.)	30.6	30.6	30.6	30.6	30.6	30.6	30.6
Rear (in.)	39.3	39.3	45.6	39.3	39.3	45.6	39.3
Cab Axle (in.)	38.6	38.6	48.3	38.6	38.6	48.3	38.6
Cab To End of Frame (in.)	74.2	74.2	90.1	74.2	74.2	90.1	74.2
Bumper To Back of Cab (in.)	100.2	100.2	100.2	114.8	100.2	100.2	114.8
Ground To Top of Rear Load Floor (in.)	28.3	28.3	28.1	28.0	29.6	28.1	29.4
Ground Clearance—Front (in.)	7.8	7.8	7.8	7.8	6.1	6.1	6.1
Rear (in.)	6.9	6.9	6.9	6.9	7.2	7.2	7.2
CARGO BOX:							
Length (in.)	73.1	73.1	89.0	73.1	73.1	89.0	73.1
Inside Width At Top (in.)	55.3	55.3	55.3	55.3	55.3	55.3	55.3
Inside Width at Floor (in.)	59.1	59.1	59.1	59.1	59.1	59.1	59.1
Inside Width at Wheelhousing (in.)	40.3	40.3	40.3	40.3	40.3	40.3	40.3
Inside Height (in.)	16.0	16.0	16.0	16.0	16.0	16.0	16.0
Tailgate Width (in.)	53.6	53.6	53.6	53.6	53.6	53.6	53.6
INTERIOR DIMENSIONS:							
CAB:							
Headroom (in.)	39.1	39.1	39.1	39.1	39.1	39.1	39.1
Legroom (in.)	42.5	42.5	42.5	42.5	42.5	42.5	42.5
Shoulder Room (in.)	53.9	53.9	53.9	53.9	53.9	53.9	53.9
Extended Cab Interior Volume (cu. ft.) w/ and w/o Jump Seat	—	—	—	18.3 / 13.7	—	—	18.3 / 13.7
FUEL TANK:							
Std. Tank Nominal (gal.)	13.0	20.0	20.0	20.0	20.0	20.0	20.0
Location of Tank	Inboard LH Frame Rail	Inboard LH Frame Rail	Inboard LH Frame Rail	Inboard LH Frame Rail	Inboard LH Frame Rail	Inboard LH Frame Rail	Inboard LH Frame Rail
Location of Filler	Left Side	Left Side	Left Side	Left Side	Left Side	Left Side	Left Side
Optional Tank Nominal (gal.)	20.0	—	—	—	—	—	—
Location of Tank	Inboard LH Frame Rail	—	—	—	—	—	—
Location of Tank	Left Side	—	—	—	—	—	—

OPTIONS

1990
S/T PICKUP

KEY: S Standard
O Optional
— Not Available

1. S-10/S-15 4X2 EL/SPECIAL REG CAB (S10603 E63/X81)
2. S-10/S-15 4X2 REG CAB (S10603 E63/X96)
3. S-10/S-15 4X2 REG CAB (S10803 E63)
4. S-10/S-15 4X2 EXT CAB/CLUB COUPE (S10653 E63)

5. T-10/T-15 4X4 REG CAB (T10603 E63)
6. T-10/T-15 4X4 REG CAB (T10803 E63)
7. T-10/T-15 4X4 EXT CAB/CLUB COUPE (T10653 E63)

OPTION	CODE	DESCRIPTION	RESTRICTIONS	MODELS													
				2-WHEEL DRIVE (S)							4-WHEEL DRIVE (T)						
				1	2	3	4				5	6	7				
AIR CONDITIONING	C60		S-10/S-15 w/LL2 Eng Reqs N40 Steering; w/LN8 Eng Incl V01 Cooling; w/LB4 Eng Incls V01 Cooling w/o V02 Cooling	O	O	O	O							O	O	O	
AXLE, REAR	G80	Locking Differential	Avail on opt ratio only, exc where only one ratio is avail	—	O	O	O							O	O	O	
BATTERY	UA1	Heavy-Duty, 630 Cold Cranking Amps Delco Freedom; Incl w/V10 Cold Climate	N/A S10803 w/4900 GVWR	—	O	O	O							O	O	O	
BUMPER EQUIPMENT																	
Bumper, Painted	V43	Rear Step, Painted Black w/step pads	N/A ZY2, ZY3 or ZY4 Paint; N/A ZQ9, N/A VG3 Front Bumpers	—	O	O	O							O	O	O	
Bumper, Chromed	VG3	Front Deluxe w/Rub Strip	N/A V43 Step Bumper; Incl w/YC2 Tahoe/Sierra Classic Reqs VG3 Bumper, YC2 Tahoe/Sierra Classic or YC1 Durango/High Sierra	—	O	O	O							O	O	O	
Bumper, Chromed	VB3	Rear Step w/Rub Strip		—	O	O	O							O	O	O	
COLD CLIMATE PACKAGE	V10	Incls UA1 Battery, Engine Block Heater, Anti-Freeze, Full Dash, Door Insulation, Hood Blanket, Extra Floor Insulation and Backlite Moldings		—	O	O	O							O	O	O	
CONSOLE	D55		Reqs High-Back Bucket Seats	—	O	O	O							O	O	O	
COOLING SYSTEM, H.D.																	
Engine Oil Cooler	KC4		Reqs LB4 Eng; N/A V01 Cooling	—	O	O	O							O	O	O	
H.D. Radiator	V01	Incl w/C60 Air	N/A V02 Cooling or LL2 Eng or KC4 Cooling; S-10/S-15 Reqs LN8/LB4; T-10/T-15 Reqs LB4 Eng	—	O	O	O							O	O	O	
Radiator and Transmission Oil Cooler	V02		Reqs LB4 Eng and MX0 Trans N/A V01 Cooling	—	O	O	O							O	O	O	
CONVENIENCE PACKAGE																	
Driver's	ZM7	Incls Comfortilt Steering and Intermittent Wiper System		—	O	O	O							O	O	O	
Operating	ZQ2	Incls Power Door Locks and Power Windows		—	O	O	O							O	O	O	
DURANGO/HIGH SIERRA	YC1	(See Trim Level Section)		—	O	O	O							O	O	O	
ENGINES		(See Powertrains for Details)															
2.5-liter L4 EFI	LN8		—	S	S	S	S							—	—	—	
2.8-liter V6 EFI	LL2		Reqs. MM5 Trans	—	O	O	O							—	—	—	
4.3 liter V6 EFI	LB4		Reqs. MX0 Trans	—	O	O	O							S	S	S	
EXTERIOR, BLACKOUT	ZQ9	Blackout on Headlamp Bezels, Grille, Front Bumper & Tail Lamp Bezels	Reqs ZY1 Paint N/A VB3 Bumper, VG3 Bumper, D45 Mirror, B96 Wheel Opening Moldings	—	O	O	O							O	O	O	
FLOOR COVERING																	
Full Floor, Rubber, Color-Keyed	BG9	Full Floor, Rubber, Charcoal (Replaces Carpeting)	Reqs YC1 Durango/High Sierra; N/A B32 Mats.	—	O	O	O							O	O	O	
Floor Carpeting	B30		N/A YC1 Durango/High Sierra or YC2 Tahoe/Sierra Classic	—	O	O	O							O	O	O	
Mats, Removable, Color-Keyed	B32		Reqs YC1 Durango/High Sierra. Incl w/YC2 Tahoe/Sierra Classic	O	O	O	O							O	O	O	
GAGES, ELECTRONIC	U52	Electronic Readout Voltmeter, Temperature, Oil Pressure, Fuel, Speedometer and Tachometer	N/A LN8 Engine	—	O	O	O							O	O	O	

**1990
S/T PICKUP**

OPTIONS

KEY: S Standard
O Optional
— Not Available

1. S-10 S-15 4X2 EL/SPECIAL REG CAB (S10603 E63 X81)
2. S-10 S-15 4X2 REG CAB (S10603 E63 X96)
3. S-10 S-15 4X2 REG CAB (S10803 E63)
4. S-10 S-15 4X2 EXT CAB-CLUB COUPE (S10653 E63)

5. T-10 T-15 4X4 REG CAB (T10603 E63)
6. T-10 T-15 4X4 REG CAB (T10803 E63)
7. T-10 T-15 4X4 EXT CAB-CLUB COUPE (T10653 E63)

OPTION	CODE	DESCRIPTION	RESTRICTIONS	MODELS													
				2-WHEEL DRIVE (S)				4-WHEEL DRIVE (T)									
				1	2	3	4	5	6	7							
GLASS Deep Tinted	AJ1	Backlite/and Rear Quarter: Ext Cab/Club Coupe Incls A20 Swing Out Windows		—	O	O	O										
HARNESS, WIRING	US9	5-Lead	N/A Z82 Trailering	—	O	O	O										
LIGHTING, AUXILIARY	TR9	Incls Lighted Interior Rear View Mirror, Dual Reading Lamps, Headlamp-on Warning, and Lamps in engine compartment and ashtray		—	O	O	O										
MIRRORS Lighted Visor, LH and RH	D74			—	O	O	O										
MOLDINGS Body Side and Wheel Opening (Black)	B84	Incl B96 Molding w/YC2 Incl B74 Molding w/YC3	w/ZQ9 Blackout Exterior Reqs B74 Moldings; w o ZQ9 Blackout Exterior Incls B96 Moldings Incl w/YC2 Tahoe/Sierra Classic, ZY2 or ZY4	—	O	O	O										
Wheel Opening (Black)	B74		N/A B96 Moldings; Incl when YC2 Tahoe/Sierra Classic and ZQ9 are specified	—	O	O	O										
Wheel Opening (Bright)	B96	Incl w/B84 Mldgs and YC2 Tahoe/Sierra Classic	N. A ZQ9	—	O	O	O										
OPTION PACKAGE EL/SPECIAL	X97	(See Trim Levels)	Reqs X81	O	—	—	—										
PAINT Solid Conventional Two-Tone	ZY1 ZY2	(See Color and Trim) Incls B84 Body Side Molding	Reqs VG3 Bumper w.o YC1 Durango, High Sierra or YC2 Tahoe/Sierra Classic N/A ZQ9	S	S	S	S										
Special Two-Tone	ZY3			—	O	O	O										
Deluxe Two-Tone	ZY4	Incls B84 Body Side Molding	Reqs VG3 Bumper w.o YC1 Durango, High Sierra or YC2 Tahoe/Sierra Classic N. A ZQ9	—	O	O	O										

OPTIONS

1990
S/T PICKUP

KEY: S Standard
O Optional
— Not Available

1. S-10/S-15 4X2 EL/SPECIAL REG CAB (S10603 E63/Z81)
2. S-10/S-15 4X2 REG CAB (S10603 E63/Z96)
3. S-10/S-15 4X2 REG CAB (S10803 E63)
4. S-10/S-15 4X2 EXT CAB/CLUB COUPE (S10653 E63)

5. T-10/T-15 4X4 REG CAB (T10603 E63)
6. T-10/T-15 4X4 REG CAB (T10803 E63)
7. T-10/T-15 4X4 EXT CAB/CLUB COUPE (T10653 E63)

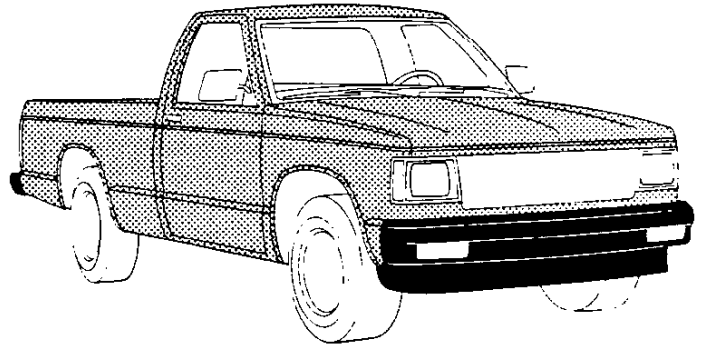
OPTION	CODE	DESCRIPTION	RESTRICTIONS	MODELS											
				2-WHEEL DRIVE (S)						4-WHEEL DRIVE (T)					
				1	2	3	4	5	6	7	8	9	10	11	12
RADIO EQUIPMENT Electronically-Tuned AM Radio	UT5			O	S	S	S					S	S	S	
Electronically-Tuned AM/FM Stereo Radio w/Seek-Scan, Stereo Cassette Tape and Digital Clock	UM6	14 Presets, Digital Display, Two 4" x 6" Front Speakers, Two 4" x 10" ERS Rear Speakers, 28 Watts Total Power Output	Standard on GMC Models	—	O	O	O					O	O	O	
Electronically-Tuned AM/FM Stereo Radio w/Seek-Scan and Digital Clock (includes Premium Dual Rear Speakers)	UM7			—	O	O	O					O	O	O	
Electronically-Tuned AM Stereo/FM Stereo Radio w/Seek-Scan, Stereo Cassette Tape w/Search-Repeat, Graphic Equalizer and Digital Clock	UX1	14 Presets, Digital Display, Two 4" x 6" Front Speakers, Two 4" x 10" ERS Rear Speakers, 28 Watts Total Power Output		—	O	O	O					O	O	O	
Radio Delete	UL5			—	O	O	O					O	O	O	
SEAT EQUIPMENT	AV5	High-back Bucket Seats Incl Easy Entry RH Seat Seat Backs, Reclining	Incl w/Reqs Bucket Seats	—	O	O	O					O	O	O	
SEATING	AJ2	Jump, Rear	Reqs Bucket Seats	—	—	—	O					—	—	O	
SHIELD PACKAGE	ZM5	Incls Shield for Fuel Tank, Front Diff., Steering Linkage and Transfer Case	T-10/T-15 only	—	—	—	—					O	O	O	
SHOCK ABSORBERS	F51	Front and Rear, Heavy-Duty; Incl w/F60 or ZQ8 Suspension	N/A ZM6 Suspension Equip Off-Road	—	O	O	O					O	O	O	
SPARE TIRE, FULL SIZE Highway	ZK4		Reqs QFT, QMW, QSA or QYH	—	S	S	S					—	—	—	
On-Off Road	ZK5		Reqs QCE or QCF Reqs QEB, QJL, QJT	—	—	—	—					S	S	S	
SPEED CONTROL, ELECTRONIC	K34		N/A S10803 w/4900 GVWR	—	O	O	O					O	O	O	
STEERING Power Not Desired	N51	Manual Steering Gear	S-10/S-15 only, N/A ZQ8 Susp For Reg Cabs only	S	O	O	O					—	—	—	
Power	N40	Std on T-10/T-15, Incl w/ZQ8 Suspension on Reg Cabs Only, Req w/LB4 Eng		—	O	O	O					S	S	S	
STRIPING Sunshine Striping	D90	(See Color and Trim for Availability)	Reqs ZY1 Paint Inc or ZY3 Paint w/ZY1 Paint Reqs Stripe Color	O	O	O	O					O	O	O	
Body Striping	D96		Reqs ZY1 Paint Inc w/ZY3 Paint	O	O	O	O					O	O	O	
SUNROOF	AD3	Manual, Non-Removable	w/YC2 Reqs A28 Sliding Roof Window	—	O	O	O					O	O	O	
SUSPENSION EQUIPMENT Front, Heavy-Duty Torsion Bars	F60	Incls F51 Shocks; Recommended w/Front-Mounted Accessories	T-10/T-15 only; N/A ZM6 Suspension Package	—	—	—	—					O	O	O	
Sport Chassis Pkg.	ZQ8	Incls ZJ7 Rally Wheels; w/LN8 or LL2 Eng Incls F51 Shocks and N40 Steering	S-10/S-15 Regular Cabs only; Reqs G51 Rear Spring, 4600 lb GVWR and QYH Tires	—	O	O	—					—	—	—	

COLOR COMBINATIONS

1990
S/T PICKUP

SOLID COLOR (ZY1)

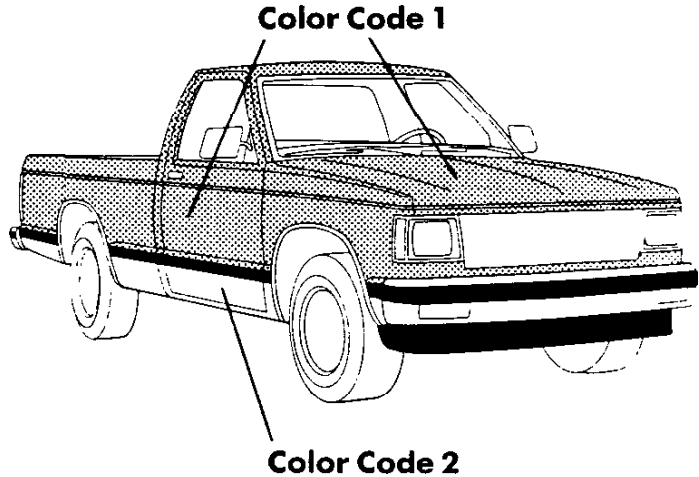
Solid paint (ZY1) is standard on all models. All painted areas of the cab, front end sheet metal and box are the same color. The following interior colors are those recommended by Chevrolet/GMC, however, any available interior trim color may be ordered with one of these exterior colors unless otherwise specified. For further information, refer to Seats and Interior Trim pages as well as the Ordering Guide.



EXTERIOR COLORS		STRIPE COLORS	INTERIOR COLORS			
COLOR 1	COLOR 2	D98	Blue	Charcoal	Garnet	Saddle
12 Frost White	—	Blue	•			
	—	Red		•	•	
	—	Gold				•
19 Midnight Black	—	Red	—		•	
	—	Silver	—	•		
	—	Gold	—			•
24 Aspen Blue Met.	—	Silver	•	•		
37 Wheat	—	Gold		•		•
40 Woodlands Brown Met.	—	Gold				•
47 Royal Blue Met.	—	Blue	•	•		
48 Garnet	—	Silver	—	•	—	
	—	Gold	—	—	•	
67 Nevada Gold Met.	—	Brown		•		•
72 Apple Red	—	Silver		•	•	
90 Steel Gray Met.	—	Red	—	—	•	
	—	Silver	—	•	—	

CONVENTIONAL TWO-TONE (ZY2)

Conventional two-tone (ZY2) paint is available on all models. This paint package requires ordering either the VG3 Deluxe Front Bumpers, or the Durango, High Sierra or Tahoe/Sierra Classic trim level packages. ZY2 paint includes B84 body side moldings and bright wheel opening moldings. Color code 1 is applied to the areas above the belt styling crease line, and color code 2 is applied to the areas below the line. The following combinations are those recommended by Chevrolet/GMC. The only available color code 1/color code 2 exterior color combinations are those shown below, however, any available interior trim color may be ordered with one of these exterior colors unless otherwise noted. For further information, refer to Seats and Interior Trim pages as well as the Ordering Guide.

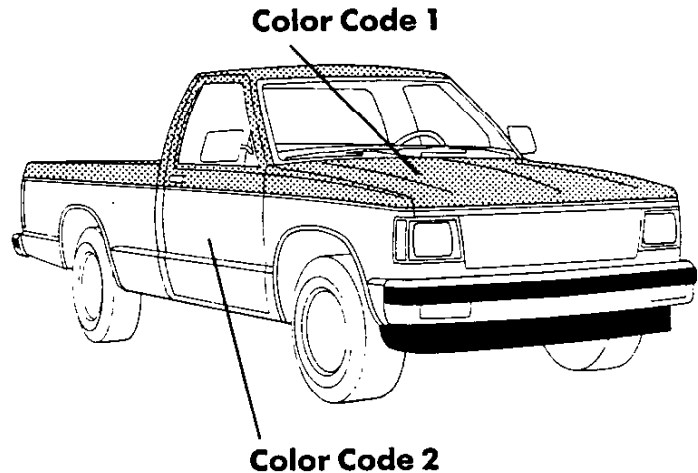


KEY: — Not Available

EXTERIOR COLORS		STRIPE COLORS	INTERIOR COLORS			
COLOR 1	COLOR 2		Blue	Charcoal	Garnet	Saddle
12 Frost White	47 Royal Blue Met.	—	•			
	67 Nevada Gold Met.	—				•
	72 Apple Red	—		•	•	
19 Midnight Black	67 Nevada Gold Met.	—		•		•
	72 Apple Red	—			•	
	17 Silver Met.	—		•	•	
24 Aspen Blue Met.	47 Royal Blue Met.	—	•			
	17 Silver Met.	—	•	•		
37 Wheat	40 Woodlands Brown Met.	—				•
	67 Nevada Gold Met.	—				•
40 Woodlands Brown Met.	67 Nevada Gold Met.	—				•
	37 Wheat	—				•
47 Royal Blue Met.	17 Silver Met.	—	•	•		
	12 Frost White	—	•			
48 Garnet	67 Nevada Gold Met.	—			•	•
	72 Apple Red	—		•	•	
	17 Silver Met.	—		•	•	
67 Nevada Gold Met.	19 Midnight Black	—		•		•
	40 Woodlands Brown Met.	—				•
	37 Wheat	—				•
72 Apple Red	19 Midnight Black	—		•	•	
	48 Garnet	—		•	•	
	17 Silver Met.	—		•	•	
90 Steel Gray Met.	19 Midnight Black	—		•	•	
	17 Silver Met.	—		•	•	

**SPECIAL
TWO-TONE
(ZY3)**

Special two-tone (ZY3) paint is available on all models. It requires ordering either the VG3 Deluxe Front Bumpers, or the Durango/High Sierra or Tahoe Sierra Classic trim level packages. Decal striping is also included. Color code 1 is applied to the areas above the belt styling crease line, and color code 2 is applied to the areas below the line. The following combinations are those recommended by Chevrolet/GMC. The only available color code 1/color code 2 exterior color combinations are those shown below, however, any available interior trim color may be ordered unless otherwise noted. For further information, refer to Seats and Interior Trim pages as well as the Ordering Guide.

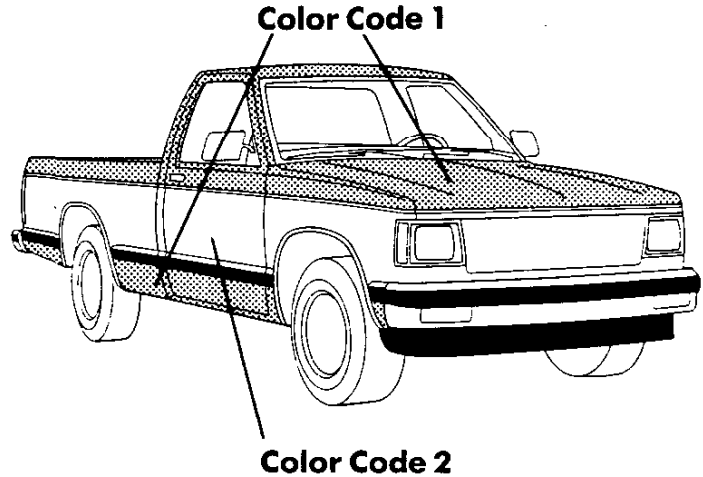


KEY: — Not Available

EXTERIOR COLORS		STRIPE COLORS	INTERIOR COLORS			
COLOR 1	COLOR 2		Blue	Charcoal	Garnet	Saddle
12 Frost White	47 Royal Blue Met.	Silver	•			
	67 Nevada Gold Met.	Brown				•
	72 Apple Red	Silver		•	•	
19 Midnight Black	67 Nevada Gold Met.	Brown		•		•
	72 Apple Red	Silver			•	
	17 Silver Met.	Red		•	•	
24 Aspen Blue Met.	47 Royal Blue Met.	Silver	•			
	17 Silver Met.	Blue	•	•		
37 Wheat	40 Woodlands Brown Met.	Gold				•
	67 Nevada Gold Met.	Gold				•
40 Woodlands Brown Met.	67 Nevada Gold Met.	Brown				•
	37 Wheat	Gold				•
47 Royal Blue Met.	17 Silver Met.	Blue	•	•		
	12 Frost White	Blue	•			
48 Garnet	67 Nevada Gold Met.	Brown			•	•
	72 Apple Red	Silver		•	•	
	17 Silver Met.	Red		•	•	
67 Nevada Gold Met.	40 Woodlands Brown Met.	Gold				•
	19 Midnight Black	Gold		•		•
	37 Wheat	Gold				•
72 Apple Red	19 Midnight Black	Silver		•	—	
	19 Midnight Black	Red	—	—	•	
	17 Silver Met.	Red		•	•	
	48 Garnet	Silver		•	•	
90 Steel Gray Met.	19 Midnight Black	Red		•	•	
	17 Silver Met.	Red		•	•	

DELUXE TWO-TONE (ZY4)

Deluxe two-tone (ZY4) paint is available on all models. It requires ordering either VG3 Deluxe Front Bumpers, or the Durango/High Sierra or Tahoe/Sierra Classic trim level packages. ZY4 paint includes body side striping that matches color code 2 (without Tahoe/Sierra Classic). It also includes B84 body side moldings and bright wheel opening moldings. The areas above the belt styling crease line and below the moldings are painted color code 1. The areas between the line and the moldings are painted color code 2. The following combinations are those recommended by Chevrolet/GMC. The only available color code 1/color code 2 exterior color combinations are those shown below, however, any available interior trim color may be ordered with one of these exterior colors unless otherwise noted. For further information, refer to Seats and Interior Trim pages as well as the Ordering Guide.



KEY: —Not Available

EXTERIOR COLORS		STRIPE COLORS	INTERIOR COLORS			
COLOR 1	COLOR 2		Blue	Charcoal	Garnet	Saddle
12 Frost White	47 Royal Blue Met.	—	•			
	67 Nevada Gold Met.	—				•
	72 Apple Red	—		•	•	
19 Midnight Black	67 Nevada Gold Met.	—		•		•
	72 Apple Red	—			•	
	17 Silver Met.	—		•	•	
24 Aspen Blue Met.	47 Royal Blue Met.	—	•			
	17 Silver Met.	—	•	•		
37 Wheat	40 Woodlands Brown Met.	—				•
	67 Nevada Gold Met.	—				•
40 Woodlands Brown Met.	67 Nevada Gold Met.	—				•
	37 Wheat	—				•
47 Royal Blue Met.	17 Silver Met.	—	•	•		
	12 Frost White	—	•			
48 Garnet	67 Nevada Gold Met.	—			•	•
	72 Apple Red	—		•	•	
	17 Silver Met.	—		•	•	
67 Nevada Gold Met.	40 Woodlands Brown Met.	—				•
	19 Midnight Black	—		•		•
	37 Wheat	—				•
72 Apple Red	19 Midnight Black	—	—	•	•	
	17 Silver Met.	—		•	•	
	48 Garnet	—		•	•	
90 Steel Gray Met.	19 Midnight Black	—		•	•	
	17 Silver Met.	—		•	•	

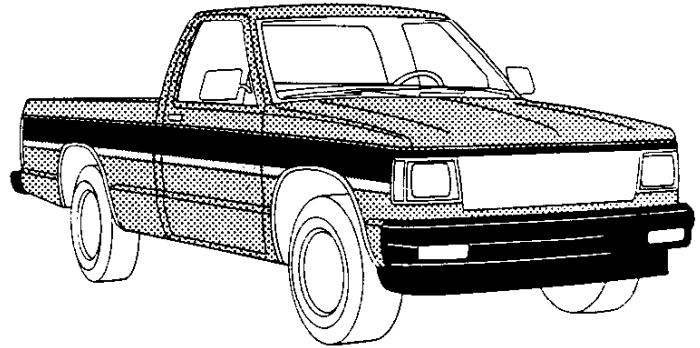
COLOR COMBINATIONS

1990
S/T PICKUP

SUNSHINE STRIPING

(D90)
WITH SOLID COLOR (ZY1) PAINT

Sunshine striping (D90) is available with ZY1 Solid paint. Sunshine striping consists of 4 bold decal stripes along the full length of the truck and across the tailgate. The stripes vary in color density; the top stripe is completely opaque and each of the three remaining stripes is less opaque than the one above it, allowing the exterior paint color to show through more and more in each succeeding stripe until the bottom stripe actually has just a hint of color in it. The following combinations are those recommended by Chevrolet/GMC, however, any interior trim color may be ordered unless otherwise noted. For further information, refer to Seats and Interior Trim pages as well as the Ordering Guide.



KEY: — Not Available

EXTERIOR COLORS		INTERIOR COLORS		STRIPE COLORS				
COLOR 1	COLOR 2	RECOMMENDED	AVAILABLE	Black	Gold	Gray	Silver	White
12 Frost White	—	Blue	—	•		•	•	
	—	Garnet	—	•		•	•	
	—	Charcoal	—	•		•	•	
	—	Saddle	—	•				
19 Midnight Black	—	Charcoal	—		•		•	
	—	Garnet	—				•	
	—	Saddle	—		•		•	
24 Aspen Blue Met.	—	Blue	Saddle				•	
	—	Charcoal	Garnet				•	
37 Wheat	—	Charcoal	Blue	•	•			
	—	Saddle	Garnet	•	•			
40 Woodlands Brown Met.	—	Saddle	Charcoal		•			
	—		Blue		•			
	—		Garnet			•		
47 Royal Blue Met.	—	Blue	Saddle				•	
	—	Charcoal	Garnet				•	
48 Garnet	—	Garnet	Blue				•	
	—	Charcoal	Saddle				•	
67 Nevada Gold Met.	—	Charcoal	Blue	•				
	—	Saddle	Garnet	•				
72 Apple Red	—	Garnet	Blue	•			•	•
	—	Charcoal	Saddle	•			•	•
90 Steel Gray Met.	—	Garnet	Blue				•	
	—	Charcoal	Saddle				•	

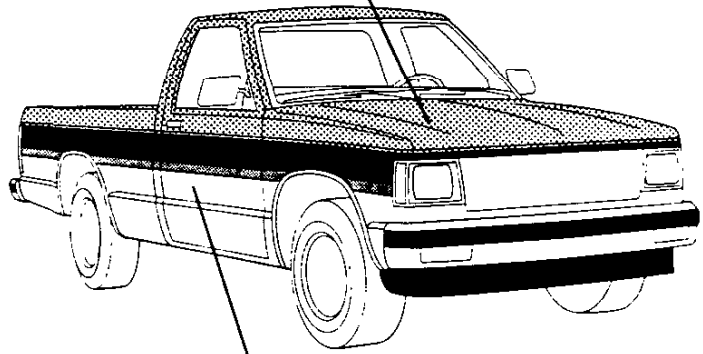
1990
S/T PICKUP

COLOR COMBINATIONS

**SUNSHINE
STRIPING**

(D90)
WITH SPECIAL TWO-TONE (ZY3)
PAINT

The following chart shows ZY3 Special two-tone paint combinations available with D90 Sunshine Striping. The only available color code 1/color code 2 exterior color combinations are those shown below, however, any available interior trim color may be ordered unless otherwise noted. For further information, refer to Seats and Interior Trim pages as well as the Ordering Guide.



Color Code 2

KEY: —Not Available

EXTERIOR COLORS		STRIPE COLORS		INTERIOR COLORS			
COLOR 1	COLOR 2	RECOMMENDED	AVAILABLE	Black	Gold	Gray	White
12 Frost White	47 Royal Blue Met.	Blue	—				•
	72 Apple Red	Charcoal	—				•
		Garnet	—				•
	67 Nevada Gold Met.	Saddle	—				•
19 Midnight Black	67 Nevada Gold Met.	Charcoal	—	•			
		Saddle	—	•			
	72 Apple Red	Garnet	—	•			
	17 Silver Met.	Charcoal	Blue, Saddle	•			
		Garnet	Blue/Saddle	•			
67 Nevada Gold Met.	19 Midnight Black	Charcoal	—		•		
		Saddle	—		•		
	40 Woodlands Brown Met.	Saddle	—		•		
	37 Wheat	Saddle	—		•		
90 Steel Gray Met.	19 Midnight Black	Charcoal	Blue			•	
		Garnet	Blue			•	
	17 Silver Met.	Charcoal	—			•	
		Garnet	—			•	

TRAILERING SPECIAL PACKAGES

If you intend to tow a light trailer (up to 2000 lbs. gross weight) with your new S/T Pickup, an optional Trailering Special Package is not required. However, an optional heavy-duty radiator, rear step bumper and light-duty 5-wire wiring harness are required. The step bumper also requires the installation of a 1 7/8" diameter hitch ball, available as an accessory. The 5-wire harness (RPO U89) has a male-female connector and a pigtail that must be spliced into the trailer wiring harness. This allows the electrical system to activate trailer lights and other electrical systems.

If you intend to tow a medium trailer (up to 4000 lbs. gross weight) or a heavy trailer (up to 6000 lbs. gross weight), heavy-duty Trailering Special Package RPO Z82 is a required option. (This Z82 option is also required, regardless of gross trailer weight, if your trailer tongue weight exceeds 400 lbs.) RPO Z82 includes a weight-distributing platform hitch receiver which is bolted to the undercarriage and a heavy-duty 7-wire wiring harness that can be spliced into your special connector.



See the chart below—Required/Recommended Trailering Equipment—for trailering options in addition to Trailering Special Packages.

The chart below indicates, in bold type, the trailering equipment required in an S/T Pickup for light, medium and heavy trailer towing. Additional recommended options are also indicated. To help you in ordering, each column lists Regular Production Option (RPO) numbers.

Note that, although S/T Pickups can be purchased with manual transmissions for towing purposes, Chevrolet/GMC Truck strongly endorses the 4-speed automatic transmission for towing.

Therefore, the chart below is for S/T Pickups with automatic transmissions only. Other important trailering information is available in the Owner's Manual of every 1990 Chevrolet/GMC Truck.

REQUIRED/RECOMMENDED TRAILERING EQUIPMENT

Trailer Classification	Light		Medium		Heavy	
	2000	4000	6000	5500 ³	750	700
Maximum Gross Trailer Weight (lbs.) ¹	200	500	750	700	3.08 (5000)	3.08 (4500)
Maximum Tongue Load (lbs.)	200	500	750	700	3.42 (6000)	3.42 (5500)
Series	2WD	4WD	2WD	4WD	2WD	4WD
Trailering Special Package	—	—	Z82	Z82	Z82	Z82
5-Wire Wiring Harness	U89	U89	—	—	—	—
7-Wire Wiring Harness (incl. in RPO Z82)	—	—	X	X	X	X
Deadweight Hitch—Rear-Step Bumper	V43/VB3 ²	V43/VB3 ²	—	—	—	—
Weight-Distributing Hitch Platform (incl. in RPO Z82)	—	—	X	X	X	X
Minimum Engine						
Std. 2.5L (151 Cu. In.) 4-cyl. Engine w/EFI	LN8	—	—	—	—	—
Opt. 4.3L (262 Cu. In.) V6 w/EFI (Std. on 4WD)	—	LB4	LB4	LB4	LB4	LB4
4-Spd. Automatic Transmission w/Overdrive	MX0	MX0	MX0	MX0	MX0	MX0
Minimum Rear Axle Ratio (to 1)	3.73	3.08	3.08	3.08	3.08 (5000)	3.08 (4500)
					3.42 (6000)	3.42 (5500)
Engine Oil Cooler	—	—	KC4	KC4	KC4	KC4
Transmission Oil Cooler	—	—	V02	V02	V02	V02
Heavy-Duty Radiator	V01	V01	—	—	—	—
Below-Eye-line Outside Rearview Mirrors	—	—	D44	D44	D44	D44
Heavy-Duty Shock Absorbers, Front and Rear	—	—	F51	F51	F51	F51
Electronic Speed Control	—	—	K34	K34	K34	K34
Power Steering	—	—	N40	Std.	N40	Std.

¹ Maximum gross trailer weight includes all passengers and cargo in the vehicle plus any cargo in the trailer. ² RPO V43: Painted Rear Step Bumper; RPO VB3: Chrome (hitch ball not included). ³ Gross trailer weight is reduced by 1000 lbs. if P235/75R15 tires are used. NOTE: Chart entries in bold type are required options.

HOW TO USE GCWRs TO DETERMINE POWERTRAIN AND REAR AXLE RATIO FOR TRAILERING

Perhaps you prefer to use Gross Combination Weight Ratings (GCWRs) to determine the engine, transmission and rear axle ratio you will require to tow a special trailer with your truck. The chart below allows you to do just that. It shows you the maximum allowable GCWR based on all the available truck engines and rear axle

ratios with automatic or manual transmissions. The GCWR includes the total loaded weight of both the truck and trailer. Any available engine may be used for trailering if the GCWR shown is not exceeded. The trailer weight can be increased by 25% if the vehicle speed will not exceed 25 mph.

GROSS COMBINATION WEIGHT RATING (GCWR) Includes Weight of Both Truck and Trailer By Engine & Axle Ratio For Recreational Applications																				
With Automatic Transmission																				
GCWR (lb.)	6000	6500	7000	7500	8000	8500	9000	9500	10,000	10,500	11,000	11,500	12,000	12,500	13,500	14,000	14,500	15,000	16,000	19,000
Engines	Rear Axle Ratios																			
2.5L (151) L4 Gas	3.73	4.11																		
4.3L (262) V6 Gas ¹						3.08		3.42												
With Manual Transmission																				
GCWR (lb.)				4500	5000	5500	6000	7000	7500	8500	9000	9500	10,000	11,000	12,000	13,500	14,500	15,000	16,000	19,000
2.5L (151) L4 Gas					3.73	4.11														
2.8L (173) V6 Gas					3.42															
4.3L (262) V6 Gas							2.73	3.42	3.73											

¹ GCWR on S/T Pickups and Blazers is reduced by 1000 lbs. when P235/75R-15 tires are specified.

When towing a trailer in excess of 3000 lbs. with a truck equipped with a 4-speed automatic transmission, it is recommended to shift to third gear range ("3") instead of overdrive ("0") for normal towing, and to manually downshift as required on uphill and downhill grades.

Note: Model and driveline combinations must be verified by your local dealer for correct emissions equipment.

GENERAL TRAILERING INFORMATION

Chevrolet/GMC Truck offer a wide selection of available options for trailering and a few of them are described here.

LIGHT-DUTY TRAILER HITCH

For hauling trailers up to 2000 lbs. with a maximum tongue load of 200 lbs. A 1 7/8" -diameter ball is included. (Dealer-installed accessory. See chart for part numbers.)

LOAD-DISTRIBUTING PLATFORM

Required when towing trailers over 2000 lbs. Installs quickly and easily. (Dealer-installed accessory. See chart for part numbers.)

WIRING HARNESES

5-wire used with trailers up to 2000 lbs. gross weight and 7-wire for larger trailers. Harnesses tie into vehicle's electrical system to give your trailer lights, plus electric brakes or battery charging. (See diagram for wiring color code.)

HITCH BALLS

1 7/8" -diameter ball is standard with light-duty hitches. It is also available as an accessory: Part No. 981148. A 2" -diameter ball is also available for hitches as Part No. 980670.

MIRRORS

Trucks used as tow vehicles will require outside mirrors with extensions that exceed the width of the trailer to be towed. Optional mirrors with larger mounting brackets are available with all truck models.

DEALER-INSTALLED TRAILER HITCHES

	Light Up to 2000 Lbs. 200-Lb. Tongue Load	Light/Medium Up to 2000-Lbs. 200-Lb. Tongue Load	Heavy Up to 6000-Lbs. 750-lb. Tongue Load	Heavy Up to 7000-Lbs. 850-Lb. Tongue Load
Type of Hitch	Deadweight ¹	Rear Step Bumper ²	Weight-Distrib. Platform	Weight-Distrib. Platform
S/T Pickup	—	4	998485 ³	—

¹ Deadweight hitch includes 1 7/8" ball. ² 1 7/8" ball for step-type bumper—Part No. 998391. 2" ball for step type bumper—Part No. 998392.

³ Maximum trailer weight 5000 lbs. Maximum tongue load 600 lbs.

⁴ Standard bumper painted black—997859, chrome with rub strip 997883 or sport bumper painted black with rub strip—998020.

TRUCK WIRING CODE

The following color code for trucks should be used when installing trailer wiring harnesses.

- **Blue.** Used for electric trailer brakes or auxiliary wiring.
- **Red.** Used for battery charging. Connects to starter solenoid. (7-wire harness only).
- **Light Green.** Backup lights (7-wire harness only).
- **Brown.** Taillight and running lights.
- **Yellow.** Left stop and turn signal.
- **Dark Green.** Right stop and turn signal.
- **White.** Ground.

COOLERS AND COOLING

Trailering creates higher-than-normal temperatures in coolant, engine and transmission oil. To help control these temperatures, consider the following separate options.

RPO V02. This is an extra-capacity heavy-duty automatic transmission oil cooler option. (Included in RPO Z82 Trailering Special Package.)

RPO KC4. This optional engine oil cooler circulates oil through a separate cooler mounted ahead of the radiator. (Included in RPO Z82 Trailering Package.)

NOTE: If the vehicle is equipped with a step bumper, the "V" shaped foot on the trailer tongue could dent your step bumper in a sharp turn. Before towing under these conditions, check the distance from the foot front edge to the center of the couple ball socket. If this dimension is less than 12 inches, remove the foot on the trailer or possible damage to the bumper could occur.