

TAHOE

(YC2)

Tahoe trim level is an optional trim level for the S-10 Pickup. It is designed to offer truck buyers an increased level of comfort and convenience features compared to the Standard trim.

The following features are standard. Bold type denotes equipment in addition to or replacing that of the Standard trim.



Some equipment shown may be optional or extra cost.

POWERTRAIN/CHASSIS

- ALTERNATOR: 96 amp Delcotron on 2-wheel drive. 100 amp Delcotron on 4-wheel drive.
- BATTERY: 525 amp CCA.
- BRAKES: Power-assisted; front disc, rear drum. Includes rear-wheel anti-lock braking system that operates in 2-wheel drive only.
- ENGINE: 2.5-liter L4 EFI on 2-wheel drive. 105 net horsepower @ 4800 rpm and 135 lb. ft. of net torque @ 3200 rpm. 4.3-liter EFI on 4-wheel drive. 160 net horsepower @ 4000 rpm and 230 lb. ft. of net torque @ 2800 rpm.
- EXHAUST: Single.
- FRAME: All-welded ladder-type, channel design and boxed front-end section.
- FUEL TANK: 20-gallon (approx.).
- REAR AXLE: Hypoid, Semi-Floating. Ratio: 3.73:1 on 2-wheel drive s. 3.08:1 on 4-wheel drive.
- SHOCK ABSORBERS: Front—25 mm. Rear—25 mm.
- STABILIZER BAR: Front—.98 on 2-wheel drive and 1.10 on 4-wheel drive.
- STEERING: Manual on 2-wheel drive reg. cabs. Ratio: 28/24.1:1. Integral power on 2-wheel drive maxi cabs and all 4-wheel drive. Ratio: 16/13:1.
- SUSPENSION: Front—Independent with computer-selected coil springs on 2-wheel drive and torsion bars on 4-wheel drive. Rear—Semi-Elliptic two-stage multi-leaf springs.
- TOW HOOKS: Front-mounted on 4-wheel drive.
- TRANSMISSION: 5-speed manual with overdrive.

EXTERIOR

- AIR DAM: Black.
- BUMPER: **Chrome front including a black rub strip.** (A matching rear bumper is available as an option only).
- COLORS: Choice of ten in a solid paint scheme. See Color and Trim specifications for details.
- GRILLE: **Chrome and silver accents.**
- HEADLAMPS: Single rectangular halogen.
- HORN: Single electric high-note.
- INSULATION: Hood.
- LAMP: Engine compartment.
- MIRRORS: Black RH and LH **below-eye-line** type. Head size is 6.0" x 7.0".
- MOLDINGS: **Black body side w/bright trim and bright wheel opening lip.**
- PICKUP BOX: All-welded, double wall construction and steel floor.
- SPARE TIRE/WHEEL: Full-size
- SPARE TIRE CARRIER: Winch-type mounted under frame at rear.
- TIRES: Five all-season steel-belted radials. P195/75R14 BW on 2-wheel drive and P205/75R15 BW on 4-wheel drive.
- WHEELS: Five 14.0" x 6.0" **Rally with black center inserts with silver accents and trim rings on 2-wheel drive. Includes a black center insert with gold "bow tie".** Five 15.0" x 6.0" silver steel wheels with trim rings on 4-wheel drive.
- WINDOWS: **Maxi cabs have swing-out quarter windows.**

INTERIOR

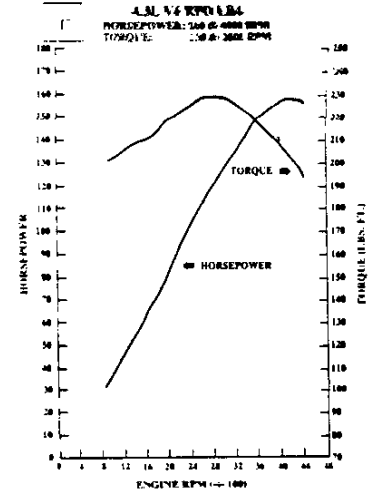
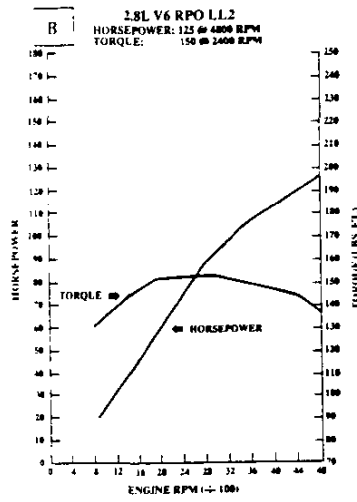
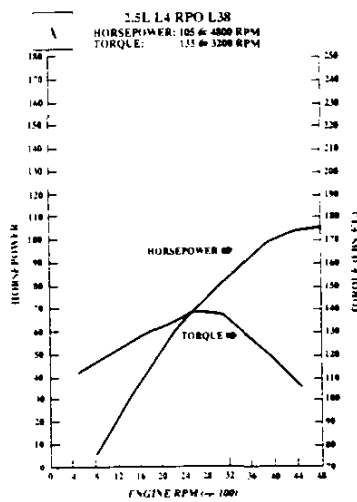
- ARMRESTS: RH and LH padded integral with door panels.
- ASSIST HANDLE: Located at passenger door windshield pillar on 4-wheel drive only.
- CIGARETTE LIGHTER: Located on instrument panel. Includes ash tray light.
- COAT HOOK: RH. Maxi cabs have RH and LH.
- COLORS: Choice of Blue, Garnet, Charcoal or Gray.
- DOME LAMP: Switches in RH and LH door jambs.
- DOOR PANELS: **Consists of special custom cloth upper inserts, carpeted lower insert and coin holder in LH door.**
- DOOR SILL PLATE: Black.
- FLOOR COVERING: **Color-keyed full floor carpeting and front floor mats.**
- GAUGES: Including speedometer, odometer, trip odometer, fuel level, voltmeter, temperature, oil pressure gauges and additional telltale lights.
- GLOVE BOX: Includes locking door and light.
- HEADLAMP WARNING BUZZER: Headlamps on.
- HEADLINER: Color-keyed with full roof coverage.
- HEATER: Deluxe with windshield and side window defoggers.
- INSULATION: Provided on the dash panel, doors, roof and full floor. **Additional insulation is provided on the cab back, and cowli-to-fender seals.**
- MIRRORS: 10-inch rearview RH visor mirror.
- RADIO: Electronically-tuned AM with two 4" x 6" standard front dash speakers, digital clock and fixed mast antenna. (Refer to Delco Electronics brochure in RPO Detail for further information).
- SEATS: **Regular Cab Models** - 3-passenger front bench with folding backrest, 3-position driver-passenger head restraints and choice of Custom Vinyl or Custom Cloth. **Maxi Cab Models** - 2-passenger front reclining high-back bucket seats with console and choice of Custom Vinyl or Special Custom Cloth.
- STEERING WHEEL: 4-spoke deluxe black.
- SUNSHADES: Padded, color keyed RH and LH.
- TOOLS: Mechanical jack and wheel wrench located in storage compartment on floor behind front seat.
- WINDOWS: Tinted.

KEY: S Standard O Optional — Not Offered Bold Print Not Available w/High Altitude Emissions.

MODEL	ENGINE	TRANSMISSION		AXLES					GVWR
		MANUAL 5-SPEED (MM5)	AUTOMATIC 4-SPEED (MX0)	ECONOMY		POWER			
				2.73	3.08	3.42	3.73	4.11	
TWO-WHEEL DRIVE MODELS									
S-10 4X2 EL REGULAR CAB FLEETSIDE CS10603/E63/X81	2.5L L4 (L38)	S	—	—	—	S	—	4200	
		—	O	—	—	S	—		
S-10 4X2 REGULAR CAB FLEETSIDE CS10603/E63/X96	2.5L L4 (L38)	S	—	—	—	S	—	4200 ¹	
		—	O	—	—	S ¹	O ²	4600	
	2.8L V6 (LL2)	S	—	—	—	S ¹	O ²	4200/4600	
		—	O	—	—	S ¹	O ²	4200/4600	
4.3L V6 (LB4)	S	—	S ¹	O	—	—	4200/4900		
	—	O	—	S ¹	O	—	4600		
S-10 4X2 REGULAR CAB FLEETSIDE CS10803/E63	2.5L L4 (L38)	S	—	—	—	S ¹	O	4200	
		—	O	—	—	S ¹	O ²	4600	
		S	—	—	—	—	S	4600	
		—	O	—	—	S ¹	O ²	4600	
	2.8L V6 (LL2)	S	—	—	—	S ¹	O ²	4200/4600	
		—	O	—	—	S ¹	O ²	4200/4600	
4.3L V6 (LB4)	S	—	S ¹	O	—	—	4200/4900		
	—	O	—	S ¹	O	—	4200/4900		
S-10 4X2 MAXI CAB FLEETSIDE CS10653/E63	2.5L L4 (L38)	S	—	—	—	S ¹	O	4200	
		—	O	—	—	S ¹	O ²	4600	
		S	—	—	—	—	S	4600	
		—	O	—	—	S ¹	O ²	4600	
	2.8L V6 (LL2)	S	—	—	—	S ¹	O	4200/4600	
		—	O	—	—	S ¹	O	4200/4600	
4.3L V6 (LB4)	S	—	S ¹	O	—	—	4200/4900		
	—	O	—	S ¹	O	—	4600		
FOUR-WHEEL DRIVE MODELS									
S-10 4 x 4 EL REGULAR CAB FLEETSIDE CT10603/E63/X81	4.3L V6 (LB4)	S	—	—	S	—	—	4650	
		—	O	—	S	—	—		
S-10 4X4 REGULAR CAB FLEETSIDE CT10603/E63/X96	4.3L V6 (LB4)	S	—	—	S ¹	O ²	—	4650/5150	
		—	O	—	S ¹	O ²	—	4650/5150	
S-10 4X4 REGULAR CAB FLEETSIDE CT10803/E63	4.3L V6 (LB4)	S	—	—	S ¹	O ²	—	4650/5150	
		—	O	—	S ¹	O ²	—	4650/5150	
S-10 4X4 MAXI CAB FLEETSIDE CT10653/E63	4.3L V6 (LB4)	S	—	—	S ¹	O ²	—	4650/5150	
		—	O	—	S ¹	O ²	—	4650/5150	

¹N/A G80 Locking Differential. ²Standard Ratio with High Altitude Emissions. ³N/A QEB P235 Tires or G80 Locking Differential.

HORSEPOWER AND TORQUE RATINGS			
ENGINE	2.5L I4	2.8L V6 ²	4.3L V6
RPO CODE	L38	L2	LB4
CHART REFERENCE CODE	A	B	C
SAE NET HORSEPOWER Horsepower @ RPM	105 @ 4800	125 @ 4800	160 @ 4000
SAE NET TORQUE Lb. Ft. @ RPM	135 @ 3200	150 @ 2400	230 @ 2800
FUEL SYSTEM	EFI	EFI	EFI
CLUTCH SIZE in.	9.13	9.13	11.02
STD. BATTERY Cold Cranking Amps @ (0°F)	525	525	525



AXLES	REAR	FRONT—FOUR-WHEEL DRIVE
MAKE AND CAPACITY (lbs.)	GM 2700/2900 ³	GM 2700 ³
PINION & RING GEARS Type	Hypoid	
Ratio	2.73 3.08 3.42 3.73 4.11	3.08 3.42
Pinion Teeth	15 13 12 11 9	13 12
Ring Gear Teeth	41 40 41 41 37	40 4
Ring Gear Dia. (in.)	7.6 7.6 7.5/7.6 ¹ 7.5 7.5	7.25 7.25
DIFFERENTIAL Type	2-Pinion	
Bearings, Type	Tapered Roller	
AXLE SHAFTS Type	Semi-Floating	
Min. Diameter (in.)	Integral Shaft and Drive Flange 1.33	
HOUSING @ SPRING SEAT Section Diameter and Thickness (in.)	2.69 x 0.116-0.175	
LUBRICANT CAPACITY (pints)	3.9	2.6

¹ 4.3-liter engine requires 3.42 axle w/7.6" ring gear. 2.8-liter engine requires 3.42 axle w/7.5" ring gear. ² Available interim 1992.
³ Refer to Standard and Optional Suspension, pages 9-12, for specific model availability.

TRANSMISSION		MANUAL			AUTOMATIC	
MODEL	MANUAL 5-SPEED w/ OVERDRIVE ¹	MANUAL 5-SPEED w/ OVERDRIVE ¹	MANUAL 5-SPEED w/ OVERDRIVE ¹	AUTOMATIC 4-SPEED w/OVERDRIVE (4L60) ¹		
ENGINE APPLICATION	2.5L L38	2.8L ² LL2	4.3L LB4	2.5L L38	4.3L LB4	
RPO CODE	MM5	MM5	MM5	MX0		
SYNCHRONIZED SPEEDS	1 2/3/4/5	1/2/3/4/5	1/2/3/4/5	—		
GEAR RATIOS						
First	4.03	3.0	—	3.06		
Second	2.37	2.10	—	1.63		
Third	1.49	1.42	—	1.00		
Fourth	1.00	1.00	1.00	0.70		
Fifth	.86	.72	.83	—		
Reverse	3.76	3.76	3.74	2.29		
GEAR TYPE				Planetary		
Forward	Helical	Helical	Helical	—		
Reverse	Spur	Spur	Spur	—		
Center Distance (mm)	77	—	85	—		
TORQUE CONVERTER				Pump/Stator/Turbine Automatic		
Element Types	—	—	—	—		
Lock-up Clutch	—	—	—	—		
LUBRICANT CAPACITY (pints)						
Oil	4.4	4	3.7	—		
Dry Fill	—	—	—	19		
Refill	—	—	—	10		

¹Refer to Powertrains, page 6, for specific model availability.

²Available interim 1992.

TRANSFER CASE	
MODEL	NEW PROCESS 231
AVAILABILITY	4-wheel drive
RATIOS Hi Range Lo Range	1.00:1 2.72:1
LEVER POSITIONS	4-Lo (All-wheel Underdrive) N (Neutral) 2-Hi (Rear-wheel Drive) 4-Hi (All-wheel Drive)
LEVER LOCATION	Rear of Transmission at Center of Floor
OIL CAPACITY (pints)	2.2

TWO-WHEEL DRIVE MODELS				
MODEL	S-10 EL REGULAR CAB FLEETSIDE	S-10 REGULAR CAB FLEETSIDE	S-10 REGULAR CAB FLEETSIDE	S-10 MAXI CAB FLEETSIDE
MODEL NUMBER	CS10603/E63/ X81	CS10603/E63/ X96	CS10803/E63	CS10653/E63
STANDARD SUSPENSION				
PAYLOAD Maximum (lbs.) ¹	1563	1493	1406	1368
GVWR (lbs.)	4200	4200	4200	4200
GAWR Front (lbs.) Rear (lbs.)	2500 2300	2500 2300	2500 2300	2500 2300
FRONT SUSPENSION Type Standard Spring Capacity Total (lbs.)	Independent Coil Spring 2500	Independent Coil Spring 2500	Independent Coil Spring 2500	Independent Coil Spring 2500
Front Shock Absorbers Piston Diameter (mm)	25	25	25	25
Front Stabilizer Bar Diameter (in.)	.98	.98	.98	.98
REAR SUSPENSION Type	Semi-Elliptic 2-Stage Multi-Leaf	Semi-Elliptic 2-Stage Multi-Leaf	Semi-Elliptic 2-Stage Multi-Leaf	Semi-Elliptic 2-Stage Multi-Leaf
Standard Spring Capacity Total (lbs.) Leaves Per Spring Leaf Total Thickness (in.)	2300 3 1.27	2300 3 1.27	2300 3 1.27	2300 3 1.27
Rear Shock Absorbers Piston Diameter (mm)	25	25	25	25
FRONT AXLE Type Make Maximum Capacity (lbs.) Standard Hub Locks Pinion/Ring Gear Type	Independent — 2500 — —	Independent — 2500 — —	Independent — 2500 — —	Independent — 2500 — —
REAR AXLE Type Make Maximum Capacity (lbs.) Pinion/Ring Gear Type	Semi-Floating GM 2700 Hypoid	Semi-Floating GM 2700 Hypoid	Semi-Floating GM 2700 Hypoid	Semi-Floating GM 2700 Hypoid
STANDARD TIRES Capacity (lbs.) each Front/Rear Inflation (psi) maximum Revolutions per mile @ 45 mph	Tubeless SBR P195/75R14 BW 1272 35 817	Tubeless SBR P195/75R14 BW 1272 35 817	Tubeless SBR P195/75R14 BW 1272 35 817	Tubeless SBR P195 75R14 BW 1272 35 817
WHEELS Size (in.) Front/Rear Capacity (lbs.) each Bolt Holes Bolt Circle Diameter. (in.) Offset (mm)	14 x 6.0 1393 5 4.75 0	14 x 6.0 1393 5 4.75 0	14 x 6.0 1393 5 4.75 0	14 x 6.0 1393 5 4.75 0

¹Based on curb weight.

TWO-WHEEL DRIVE MODELS

MODEL	S-10 EL REGULAR CAB FLEETSIDE	S-10 REGULAR CAB FLEETSIDE	S-10 REGULAR CAB FLEETSIDE		S-10 MAXI CAB FLEETSIDE
MODEL NUMBER	CS10603/E63/ X81	CS10603/E63 X96	CS10803/E63		CS10653/E63
OPTIONAL SUSPENSION					
OPTION	—	G51	G51	G51	G51
PAYLOAD Maximum (lbs.) ¹	—	1875	1790	1902	1752
GVWR (lbs.)	—	30	4600	4900	4600
GAWR (lbs.) Front	—	2500	2500	2500	2500
Rear	—	2700	2700	2700	2700
FRONT SUSPENSION	—	Independent Coil Spring	Independent Coil Spring		Independent Coil Spring
Type	—	2500	2500		2500
Standard Spring Capacity Total (lbs.)	—	—	—		—
Front Shock Absorbers Piston Diameter	—	32	32		32
Front Stabilizer Bar Diameter (in.)	—	1.14	1.14		1.14
REAR SUSPENSION	—	Semi-Elliptic 2-Stage Multi-Leaf	Semi-Elliptic 2-Stage Multi-Leaf		Semi-Elliptic 2-Stage Multi-Leaf
Type	—	—	—		—
Standard Spring Capacity Total (lbs.)	—	2700	2700		2700
Leaves Per Spring	—	4	4		4
Leaf Total Thickness (in.)	—	1.66	1.66		1.66
Rear Shock Absorbers Piston Diameter	—	32	32		32
FRONT AXLE	—	Independent	Independent		Independent
Type	—	—	—		—
Make	—	GM	GM		GM
Maximum Capacity (lbs.)	—	2500	2500		2500
Standard Hub Locks	—	—	—		—
Pinion/Ring Gear Type	—	—	—		—
REAR AXLE	—	Semi-Floating	Semi-Floating		Semi-Floating
Type	—	—	—		—
Make	—	GM	GM		GM
Maximum Capacity (lbs.)	—	2700	2700	2900	2700
Pinion/Ring Gear Type	—	Hypoid	Hypoid		Hypoid
STANDARD TIRES	—	Tubeless SBR	Tubeless SBR		Tubeless SBR
Type	—	—	—		—
Make	—	P205/75R14	P205/75R14		P205/75R14
Capacity (lbs.) each	—	BW	BW		BW
Front/Rear	—	1392	1392		1392
Inflation (psi) maximum	—	35	35		35
Revolutions per mile @ 45 mph	—	798	798		798
WHEELS	—	14 x 6.0	14 x 6.0		14 x 6.0
Size (in.)	—	—	—		—
Capacity (lbs.) each	—	1393	1393		1393
Bolt Holes	—	5	5		5
Bolt Circle Dia. (in.)	—	4.75	4.75		4.75
Offset	—	0	0		0

¹Based on Curb Weight.

FOUR-WHEEL DRIVE MODELS				
MODEL	S-10 EL REGULAR CAB FLEETSIDE	S-10 REGULAR CAB FLEETSIDE	S-10 REGULAR CAB FLEETSIDE	S-10 MAXI CAB FLEETSIDE
MODEL NUMBER	CT10603/E63/X81	CT10603/E63/X96	CT10803/E63	CT10653/E63
STANDARD SUSPENSION				
PAYLOAD Maximum (lbs.) ¹	1421	1394	1346	1267
GVWR (lbs.)	4650	4650	4650	4650
GAWR (lbs.) Front	2700	2700	2700	2700
Rear	2300	2300	2300	2300
FRONT SUSPENSION				
Type	Torsion Bar	Torsion Bar	Torsion Bar	Torsion Bar
Standard Spring Capacity Total (lbs.)	2700	2700	2700	2700
Front Shock Absorbers Piston Diameter (mm)	25	25	25	25
Front Stabilizer Bar Diameter (in.)	1.10	1.10	1.10	1.10
REAR SUSPENSION				
Type	Semi-Elliptic 2-Stage Multi-Leaf	Semi-Elliptic 2-Stage Multi-Leaf	Semi-Elliptic 2-Stage Multi-Leaf	Semi-Elliptic 2-Stage Multi-Leaf
Standard Spring Capacity Total (lbs.)	2300	2300	2300	2300
Leaves Per Spring	4	4	4	4
Leaf Total Thickness (in.)	1.35	1.35	1.35	1.35
Rear Shock Absorbers Piston Diameter (mm)	25	25	25	25
FRONT AXLE				
Type	Independent	Independent	Independent	Independent
Make	GM	GM	GM	GM
Maximum Capacity (lbs.)	2700	2700	2700	2700
Standard Hub Locks	Central Locking Disconnect	Central Locking Disconnect	Central Locking Disconnect	Central Locking Disconnect
Pinion/Ring Gear Type	Hypoid	Hypoid	Hypoid	Hypoid
REAR AXLE				
Type	Semi-Floating	Semi-Floating	Semi-Floating	Semi-Floating
Make	GM	GM	GM	GM
Maximum Capacity (lbs.)	2900	2900	2900	2900
Pinion/Ring Gear Type	Hypoid	Hypoid	Hypoid	Hypoid
STANDARD TIRES				
	Tubeless SBR P205/75R15 BW	Tubeless SBR P205/75R15 BW	Tubeless SBR P205/75R15 BW	Tubeless SBR P205/75R15 BW
Capacity (lbs.) each	1453	1453	1453	1453
Front/Rear				
Inflation (psi) maximum	35	35	35	35
Revolutions per mile @ 45 mph	769	769	769	769
WHEELS				
Size (in.) Front/Rear	15 x 6.0	15 x 6.0	15 x 6.0	15 x 6.0
Capacity (lbs.) each	1453	1453	1453	1453
Bolt Holes	5	5	5	5
Bolt Circle Dia. (in.)	4.75	4.75	4.75	4.75
Offset (mm)	50	50	50	50

¹Based on curb weight.

FOUR-WHEEL DRIVE MODELS

MODEL	S-10 REGULAR CAB FLEETSIDE	S-10 REGULAR CAB FLEETSIDE	S-10 MAXI CAB FLEETSIDE
MODEL NUMBER	CT10603/E63/X96	CT10803/E63	CT10653/E63

OPTIONAL SUSPENSION

OPTION	G51	G51	G51
PAYLOAD Maximum (lbs.) ¹	1886	1838	1760
GVWR (lbs.)	5150	5150	5150
GAWR (lbs.) Front Rear	2700 2700	2700 2700	2700 2700
FRONT SUSPENSION			
Type	Torsion Bar	Torsion Bar	Torsion Bar
Standard Spring Capacity Total (lbs.)	2700	2700	2700
Front Shock Absorbers Piston Diameter (mm)	32/46	32/46	32/46
Front Stabilizer Bar Diameter (in.)	.98	.98	.98
REAR SUSPENSION			
Type	Semi-Elliptic 2-Stage Multi-Leaf	Semi-Elliptic 2-Stage Multi-Leaf	Semi-Elliptic 2-Stage Multi-Leaf
Standard Spring Capacity Total (lbs.)	2700	2700	2700
Leaves Per Spring	4	4	4
Leaf Total Thickness (in.)	1.48	1.48	1.48
Rear Shock Absorbers Piston Diameter (mm)	32/46	32/46	32/46
FRONT AXLE			
Type	Independent	Independent	Independent
Make	GM	GM	GM
Maximum Capacity (lbs.)	2700	2700	2700
Standard Hub Locks	Central Locking Disconnect	Central Locking Disconnect	Central Locking Disconnect
Pinion/Ring Gear Type	Hypoid	Hypoid	Hypoid
REAR AXLE			
Type	Semi-Floating	Semi-Floating	Semi-Floating
Make	GM	GM	GM
Maximum Capacity (lbs.)	2900	2900	2900
Pinion/Ring Gear Type	Hypoid	Hypoid	Hypoid
STANDARD TIRES			
	Tubeless SBR P205/75R15 BW	Tubeless SBR P205/75R15 BW	Tubeless SBR P205/75R15 BW
Capacity (lbs.) each Front/Rear	1453	1453	1453
Inflation (psi) maximum	35	35	35
Revolutions per mile @ 45 mph	769	769	769
WHEELS			
Size (in.) Front/Rear	15 x 6.0	15 x 6.0	15 x 6.0
Capacity (lbs.) each	1453	1453	1453
Bolt Holes	5	5	5
Bolt Circle Dia. (in.)	4.75	4.75	4.75
Offset (mm)	50	50	50

¹Based on curb weight.

WHEELS AND TIRES

1992
S-10 PICKUP

KEY: N/A - Not Available BW - Blackwall HWY - Highway
AS - All-Season WL - White Lettered ON-OFF - On-Off Road
SBR - Steel-Belted Radial Ply WOL - White Outline Lettered

TWO-WHEEL DRIVE MODELS								
TIRES								
SIZE	TYPE	RPO	CONDITION	PLY	LOAD RANGE	CAPACITY (lbs.) ea.	INFLATION (psi) max.	REV. PER MILE @ 45 mph
P195/75R14	AS SBR BW	QMW	STD	1	B	1272	35	817
P205/75R14	AS SBR BW	QFT	OPT (N/A on EL)	1	B	1392	35	798
P205/75R14	AS SBR WL	QSA	OPT (N/A on EL)	1	B	1392	35	798
P215/65R15	HWY SBR WL	QPP	OPT (N/A on EL)	2 Poly. 2 Stl. 1 Nyl.	B	1372	35	801
WHEELS ¹								
SIZE (in.)	TYPE	RPO	TRIM LEVEL	BOLT HOLES	BOLT CIRCLE dia. (in.)	CAPACITY (lbs.) ea.	OFFSET (mm.)	
14.0 X 6.0	STEEL (Painted silver)	—	Standard and EL (N/A w/QPP Tires)	5	4.75	1393	0	
14.0 x 6.0	RALLY (Painted silver on coined surfaces)	—	Tahoe (N/A w/QPP Tires)	5	4.75	1393	0	
14.0 x 6.0	RALLY (Painted silver on coined surfaces includes trim rings)	ZJ7	OPT on Standard and EL	5	4.75	1393	0	
15.0 x 7.0	RALLY (Painted silver on coined surfaces)	ZJ7	Incl. when QPP tires are ordered. Available on Standard and Tahoe	5	4.75	1453	-6.4	
15.0 x 7.0	CAST ALUMINUM (N/A on EL)	N60	OPT (N/A on EL)	5	4.75	1453	-6.4	
FOUR-WHEEL DRIVE MODELS								
TIRES								
SIZE	TYPE	RPO	CONDITION	PLY	LOAD RANGE	CAPACITY (lbs.) ea.	INFLATION (psi) max.	REV. PER MILE @ 45 mph
P205/75R15	AS SBR BW	OCE	STD	1	B	1453	35	769
P205/75R15	AS SBR WL	QCF	OPT (N/A on EL)	1	B	1453	35	769
P205/75R15	ON-OFF SBR WOL	QJL	OPT (N/A on EL)	2 Poly. 2 Stl.	B	1453	35	760
P235/75R15	ON-OFF SBR WOL	QEB	OPT (N/A on EL)	2 Poly. 2 Stl.	B	1843	35	716
WHEELS ¹								
SIZE (in.)	TYPE	RPO	TRIM LEVEL	BOLT HOLES	BOLT CIRCLE dia. (in.)	CAPACITY (lbs.) ea.	OFFSET (mm.)	
15.0 x 6.0	STEEL (Painted silver)	—	Standard, EL, Tahoe (N/A w/QEB Tires)	5	4.75	1453	50	
15.0 x 7.0	CAST ALUMINUM	N90	OPT	5	4.75	1453	50	

¹Steel Spare Wheel.

TWO-WHEEL DRIVE			FOUR-WHEEL DRIVE			
MODEL	S-10 EL/ STANDARD REGULAR CAB FLEETSIDE	S-10 REGULAR CAB FLEETSIDE	S-10 MAXI CAB FLEETSIDE	S-10 EL/STANDARD REGULAR CAB FLEETSIDE	S-10 REGULAR CAB FLEETSIDE	S-10 MAXI CAB FLEETSIDE
MODEL NUMBER	CS10603/E63/X81 CS10603/E63/X96	CS10803/E63	CS10653/E63	CT10603/E63/X81 CT10603/E63/X96	CT10803/E63	CT10653/E63
FRAME						
Side Rail Dimensions Width (in.)	2.34	2.34	2.34	2.34	2.34	2.34
Depth (in.)	5.16	5.16	5.16	6.50	6.50	6.50
Thickness (in.)	.118	.134	.134	.118	.134	.134
Section Modulus Rails only	1.94	2.19	2.19	2.56	2.91	2.91
RBM of Frame	75,660	85,410	85,410	99,840	113,490	113,490
Yield Strength (psi)	39,000	39,000	39,000	39,000	39,000	39,000
Width Over Rails Front (in.)	30.9	30.9	30.9	30.9	30.9	30.9
Rear (in.)	40.35	40.35	40.35	40.35	40.35	40.35
Overall Length of Rail (in.)	170.31	186.26	184.96	170.31	186.26	184.46
STEERING						
Type	Manual: Recirculating Ball Gear	Manual: Recirculating Ball Gear	Variable Ratio Integral Power	Variable Ratio Integral Power	Variable Ratio Integral Power	Variable Ratio Integral Power
Steering Ratio On Center/At Lock Opt: Fixed Ratio Integral Power	28/24.1:1 17.5:1 ¹	28/24.1:1 17.5:1 ¹	15/13:1 —	16/13:1 —	16/13:1 —	16/13:1 —
Turning Diameter Curb-To-Curb (ft.) Wall-To-Wall (ft.)	36.8 38.7	39.7 41.5	41.1 43.0	37.8 39.4	40.5 42.3	42.1 43.8
BRAKES						
GVWR (lbs.)	4200 4200/4600	4200/4600/ 4900	4200/ 4600	4650 4650/5150	4650/ 5150	4650/ 5150
Type	Vac. Power Front Disc Rear Drum w/Rear Wheel Anti-Lock System	Vac. Power Front Disc Rear Drum w/Rear Wheel Anti-Lock System	Vac. Power Front Disc Rear Drum w/Rear Wheel Anti-Lock System	Vac. Power Front Disc Rear Drum w/Rear Wheel Anti-Lock System ³	Vac. Power Front Disc Rear Drum w/Rear Wheel Anti-Lock System ³	Vac. Power Front Disc Rear Drum w/Rear Wheel Anti-Lock System ³
Booster Diaphragm Diameter (in.)	9.4 Single/ See Footnote ²	See Footnote ²	See Footnote ²	9.4 x 7.9 Tandem	9.4 x 7.9 Tandem	9.4 x 7.9 Tandem
Front Rotor Size Diameter x Thickness (in.)	10.5 x 1.03	10.5 x 1.03	10.5 x 1.03	10.5 x 1.03	10.5 x 1.03	10.5 x 1.03
Front Facing Contact Per Axle (sq. in.)	31.68	31.68	31.68	31.68	31.68	31.68
Rear Drum Size Diameter x Width (in.)	9.5 x 2.0	9.5 x 2.0	9.5 x 2.0	9.5 x 2.0	9.5 x 2.0	9.5 x 2.0
Rear Facing Contact Per Axle (sq. in.)	63.73	63.73	63.73	63.73	63.73	63.73
Parking Brake Type	Cable To Rear Wheels	Cable To Rear Wheels	Cable To Rear Wheels	Cable To Rear Wheels	Cable To Rear Wheels	Cable To Rear Wheels

¹Z08 Sport Chassis Pkg. has 15/13:1 variable steering ratio.
²9.4-inch single booster with the 2.5L L38 engine at 4200 GVWR.
³7.9-inch x 7.9-inch tandem booster at 4600 GVWR with 2.5L engine, and 4200/4600 GVWR with 2.8L engine.
⁴9.4-inch x 7.9-inch tandem booster with 4.3L engine.
⁵Anti-lock brake system operates in 2-wheel drive only.

TWO AND FOUR WHEEL DRIVE MODELS

MODEL	S-10 EL REGULAR CAB FLEETSIDE		S-10 REGULAR CAB/MAXI CAB FLEETSIDE		
MODEL NUMBER	CS10603/E63/X81	CT10603/E63/X81	CS10603/E63/X96 CS10803/E63-CS10653/E63-CT10603/E63/X96 CT10803/E63-CT10653/E63		

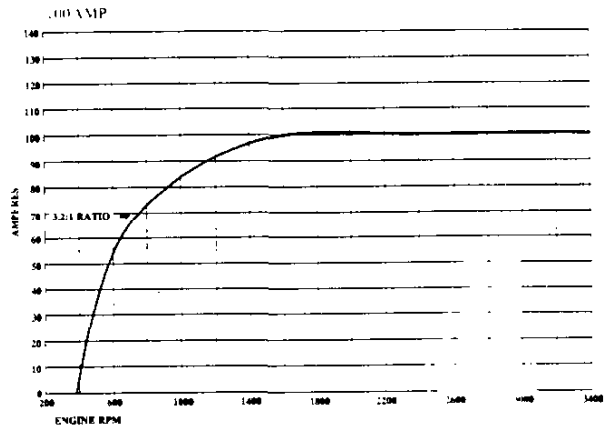
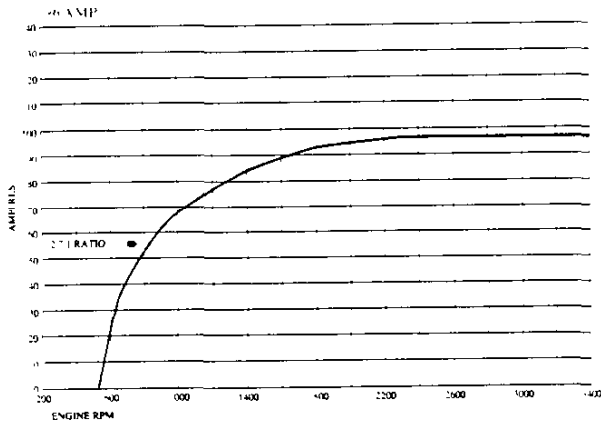
ELECTRICAL

ENGINE	2.5L	4.3L	2.5L ²	2.8L ^{1,2}	4.3L
STANDARD BATTERY					
Cold Cranking Amps @ 0°F	525	525	525	525	525
@ -20°F	390	390	390	390	390
Reserve Capacity Minutes @ 80°F	90	90	90	90	90
OPTIONAL BATTERY	UA1	UA1	UA1	UA1	UA1
Cold Cranking Amps @ 0°F	630	630	630	630	630
@ -20°F	470	470	470	470	470
Reserve Capacity Minutes @ 80°F	115	115	115	115	115
STANDARD ALTERNATOR					
Max. Capacity (Amps)	96	100	96	100	100
Max. Watts @ 12 Volts	1152	1200	1152	1200	1200
Nominal Amp @ Idle approx.	26	36	26	36	36
Drive Pulley Ratio	2.7:1	3.2:1	2.7:1	3.2:1	3.2:1
Model Number	CS130	CS130	CS130	CS130	CS130

¹N/A on CS10803/E63 at 4900 lbs. GVWR.

²N/A on 4-wheel drive models.

ALTERNATOR CURVES



KEY: Regular Type—Manual and Automatic Transmission Red Type—Manual Transmission Only Bold Type—Automatic Transmission only

TWO-WHEEL AND FOUR-WHEEL DRIVE MODELS			
MODEL	S-10 EL REGULAR CAB FLEETSIDE		S-10 4 X 2 REGULAR CAB/MAXI CAB FLEETSIDE
MODEL NUMBER	CS10603/E63/X81	T10603/E63/X81	CS10603/E63/X96 CS10803/E63 CS10653/E63 CT10603/E63-CT10803/E63-CT10653/E63

STANDARD COOLING SYSTEM

ENGINE	2.5L	4.3L	2.5L ³	2.8L ^{2,3}	4.3L
Radiator Thickness (in.)	.98	.93	.98	.98	.93
Total System Capacity (gal.)	3.0	3.0	2.9	3.0	3.0
Fan—No. Blades x Diameter x Pitch (in.)	5 x 15.0 x 2.05	3 x 18.0 x 2.0	5 x 15.0 x 2.05	5 x 15.0 x 2.05	3 x 18.0 x 2.0

OPTIONAL COOLING SYSTEMS

ENGINE	2.5L	4.3L	2.5L	2.8L	4.3L
AUTOMATIC TRANS.	MX0	MX0	MX0	—	MX0
Radiator Thickness (in.)	.98	.98	.98	—	.93
Total System Capacity (gal.)	2.9	2.9	2.9	—	3.0
Fan—No. Blades x Diameter x Pitch (in.)	5 x 15.0 x 2.05	3 x 18.0 x 2.0	5 x 15.0 x 2.05	—	3 x 18.0 x 2.0
OPT. H.D. RADIATOR	V01	V01	V01	—	V01
Radiator Thickness (in.)	.98	.93	.98	—	.93
Total System Capacity (gal.)	3.0	3.0	3.0	—	3.0
Fan—No. Blades x Diameter x Pitch (in.)	5 x 15.0 x 2.05	3 x 18.0 x 2.0	5 x 15.0 x 2.05	—	3 x 18.0 x 2.0
OPT. AIR CONDITIONING	C60	C60	C60	C60	C60
Radiator Thickness (in.)	.98	.93	.98	.98	.93
Total System Capacity (gal.)	3.0	3.0	3.0	2.9	3.0
Fan—No. Blades x Diameter x Pitch (in.)	5 x 16.9/15.0' ¹ x 2.81	5 x 19.0 x 2.8	5 x 16.9/15.0' x 2.81	5 x 16.0 x 2.83	5 x 19.0 x 2.8
OPT. ENG. OIL COOLER	—	—	—	—	KC4
Radiator Thickness (in.)	—	—	—	—	.93
Total System Capacity (gal.)	—	—	—	—	2.9
Fan—No. Blades x Diameter x Pitch (in.)	—	—	—	—	3 x 18.0 x 2.0
OPT. H.D. RADIATOR AND TRANS. OIL COOLER	—	—	—	—	V02
Radiator Thickness (in.)	—	—	—	—	1.34
Total System Capacity (gal.)	—	—	—	—	3.0
Fan—No. Blades x Diameter x Pitch (in.)	—	—	—	—	3 x 18.0 x 2.0
OPT. H.D. RADIATOR AND TRANS. OIL COOLER AND ENGINE OIL COOLER	—	—	—	—	V02 & KC4
Radiator thickness (in.)	—	—	—	—	1.34
Total System Cap. (gal.)	—	—	—	—	2.9
Fan—No. Blades x Diameter x Pitch (in.)	—	—	—	—	3 x 18.0 x 2.0

¹ Variable Diameter ² N/A on CS10803/E63 at 4900 lbs. GVWR. ³ N/A on 4-wheel drive models

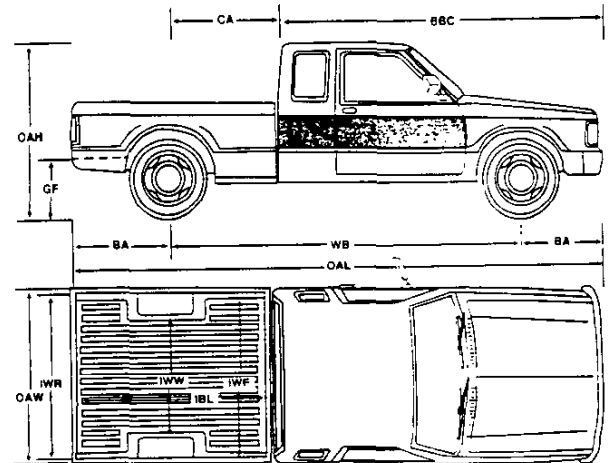
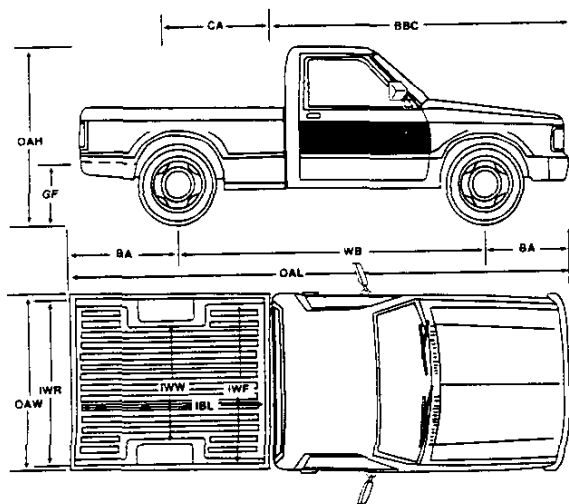
DIMENSIONS

1992
S-10 PICKUP

MODEL	TWO-WHEEL DRIVE			FOUR-WHEEL DRIVE		
	S-10 EL/STD REG. CAB FLEETSIDE	S-10 REG. CAB FLEETSIDE	S-10 MAXI CAB FLEETSIDE	S-10 EL/STD REG. CAB FLEETSIDE	S-10 REG. CAB FLEETSIDE	S-10 MAXI CAB FLEETSIDE
MODEL NUMBER	CS10603/E63/X81 CS10603/E63/X96	CS10803/E63	CS10653/E63	CT10603/E63/X81 CT10603/E63/X96	CT10803/E63	CT10653/E63

EXTERIOR DIMENSIONS

BODY							
Wheelbase (in.)	WB	108.3	117.9	122.9	108.3	117.9	122.9
Overall Length (in.)	OAL	178.2	194.2	192.8	178.2	194.2	192.8
Overall Height (in.)	OAH	61.3	61.3	61.3	63.4	63.4	63.4
Maximum Width (in.)	OAW	64.7	64.7	64.7	64.7	64.7	64.7
Bumper to Axle Front (in.)	BA	30.6	30.6	30.6	30.6	30.6	30.6
Rear overhang (w/o bumper) (in.)		39.3	45.6	39.3	39.3	45.6	39.3
Cab Axle (in.)	CA	38.6	48.3	38.6	38.6	48.3	38.6
Cab To End of Frame (in.)	—	74.2	90.1	74.2	74.2	90.1	74.2
Bumper To Back of Cab (in.)	BBC	100.2	100.2	114.8	100.2	100.2	114.8
Ground To Top of Rear Load Floor (in.)	GF	28.3	28.1	28.0	29.6	29.5	29.3
Ground Clearance							
Front (in.)	—	7.0	7.0	7.0	7.8	7.8	8.7
Rear (in.)		6.8	6.8	6.8	8.1	8.1	9.0
CARGO BOX							
Length (in.)	IBL	73.1	89.0	73.1	73.1	89.0	73.1
Inside Width at Top (in.) F/R	IWT	55.3/54.6	55.3/54.6	55.3/54.6	55.3/54.6	55.3/54.6	55.3/54.6
Inside Width at Floor (in.)	IWF	59.1	59.1	59.1	59.1	59.1	59.1
Inside Width at Wheelhousing (in.) at Floor	IWW	39.9	39.9	39.9	39.9	39.9	39.9
Inside Height (in.) Front	—	15.9	15.9	15.9	15.9	15.9	15.9
Tailgate Width (in.)	—	53.6	53.6	53.6	53.6	53.6	53.6
Cargo Volume (cu. ft.)	CV	38.8	47.1	38.8	38.8	47.1	38.8
SIGN PANEL AREA (in.)	Shaded Area	12 ³ / ₄ x45	12 ³ / ₄ x45	12 ³ / ₄ x64	12 ³ / ₄ x45	12 ³ / ₄ x45	12 ³ / ₄ x64



		TWO-WHEEL DRIVE			FOUR-WHEEL DRIVE		
MODEL		S-10 EL REG. CAB FLEETSIDE	S-10 REG. CAB FLEETSIDE	S-10 MAXI CAB FLEETSIDE	S-10 EL REG. CAB FLEETSIDE	S-10 REG. CAB FLEETSIDE	S-10 MAXI CAB FLEETSIDE
MODEL NUMBER		CS10603/E63/X81	CS10603/E63/X96 CS10803/E63	CS10653/E63	CT10603/E63/X81	CT10603/E63/X96 CT10803/E63	CT10653/E63
INTERIOR DIMENSIONS							
CAB							
Headroom (in.)	HR	39.1	39.1	39.1	39.1	39.1	39.1
Legroom (in.)	LR	42.5	42.5	42.5	42.5	42.5	42.5
Shoulder Room (in.)	SR	54.2	54.2	54.2	54.2	54.2	54.2
Extended Cab In-cab storage area w/and w/out Temporary Jump Seat (cu. ft.)	—	—	—	13.7/18.4	—	—	13.7/18.4
FUEL TANK							
Std./Opt. Tank Nominal (gal.) approx.		13.0/20.0	20.0/—	20.0/—	20.0/—	20.0/—	20.0/—
Location of Tank		Inboard LH Frame Rail	Inboard LH Frame Rail	Inboard LH Frame Rail	Inboard LH Frame Rail	Inboard LH Frame Rail	Inboard LH Frame Rail
Location of Filler		Left Side	Left Side	Left Side	Left Side	Left Side	Left Side

OPTIONS

1992
S-10 PICKUP

- KEY: S - Standard
O - Optional
— Not Available
- 1. S-10 EL 4X2 REG. CAB (CS10603/E63/X81)
 - 2. S-10 4X2 REG. CAB (CS10603/E63/X96)
 - 3. S-10 4X2 REG. CAB (CS10803/E63)
 - 4. S-10 4X2 MAXI CAB (CS10653/E63)
 - 5. S-10 EL 4 X 4 REG. CAB (CT10603/E63/X81)
 - 6. S-10 4X4 REG. CAB (CT10603/E63/X96)
 - 7. S-10 4X4 REG. CAB (CT10803/E63)
 - 8. S-10 4X4 MAXI CAB (CT10653/E63)

NOTE: Refer to Dealer Order Guide for Updated Option Availability.

OPTION	CODE	DESCRIPTION	RESTRICTION	MODELS							
				2-WHEEL DRIVE				4-WHEEL DRIVE			
				1	3	5	7	8			
AIR CONDITIONING	C60	Manual controls	w/L38 or LL2 Engine Incls V01 Cooling; w/LB4 Engine Incls V01 Cooling w/o KC4 or V02 Cooling	O	O	O	O	O	O	O	O
AIR DAM WITH FOG LAMPS	ANL	Switch on Cluster		O	O	O	O	—	—	—	—
AXLE, REAR	G80	Locking Differential	Avail on Opt ratio only except where only one ratio is available	—	O	O	O	—	O	O	O
BATTERY	UA1	Heavy-Duty, 630 Cold Cranking Amps Delco Freedom; Included w/V10 Cold Climate		O	O	O	O	O	O	O	O
BUMPER EQUIPMENT Rear Step	VF6	Chrome Bumper w/YC2 Tahoe or ZY3 Paint; Black Bumper w/o YC2 Tahoe	Req'd on ZQ9	O	O	O	O	O	O	O	O
COLD CLIMATE PACKAGE	V10	Incls UA1 Battery, Engine Block Heater, Anti-Freeze, Protection to -34° F, Full Dash, Door Insulation Extra Floor Insulation and Backlite Moldings; Also Incls B30 Carpeting w/o YC2 Tahoe	B30 Carpeting	O	O	O	O	O	O	O	O
CONSOLE	D55	Incl cupholder w/YC2 Tahoe	Reqs High-Back Bucket Seats	—	O	O	O	—	O	O	O
COOLING SYSTEM H.D. Engine Oil Cooler	KC4	Radiator mounted	Reqs LB4 Eng; N/A V01 Cooling	—	O	O	O	—	O	O	O
H.D. Radiator	V01	Incl w/C60 Air	N/A V02 Cooling or LL2 Eng or KC4 Cooling;	—	O	O	O	—	O	O	O
Radiator and Transmission Oil Cooler	V02	For trailer towing and off-road use	Reqs LB4 Eng and MX0 Trans	—	O	O	O	—	O	O	O
CONVENIENCE PACKAGE Driver's	ZM7	Incls Comfortilt Steering and Intermittent Wipers		—	O	O	O	—	O	O	O
Operating	ZQ2	Incls Power Door Locks and Power Windows		—	O	O	O	—	O	O	O
ENGINES		(See Powertrains for Details)									
2.5-liter L4 EFI	L38		S-10 2-wheel drive only	S	S	S	—	—	—	—	
2.8-liter V6 EFI	LL2		S-10 2-wheel drive only	—	O	O	—	—	—	—	
4.3-liter V6 EFI	LB4		S-10 2-wheel drive	—	O	O	S	S	S	S	
FLOOR COVERING Floor Carpeting	B30	Full Floor	N/A YC2 Tahoe; Incl w/V10 Cold Climate	O	O	O	O	O	O	O	
Mats, Removable	B32	Front, floor	Avail. Std S-10; Incl w/YC2 Tahoe	—	O	O	—	O	O	O	
GAGES, ELECTRONIC	U52	Electronic Readout Voltmeter, Temperature, Oil Pressure, Fuel, Speedometer, Tachometer	N/A L38 or LL2 Engine	—	O	O	—	O	O	O	
GLASS Heavily-Tinted	AJ1	Rear Window Only, Ext. Cab Incls A20 Swing Out Windows	N/A A28 Window	—	O	O	—	O	O	O	
HARNES, WIRING	U89	5-Lead w/H.D. Flasher	N/A Z82 Trailering	—	O	O	—	O	O	O	

- KEY S - Standard
O - Optional
— Not Available
- 1. S-10 EL 4X2 REG. CAB (CS10603/E63/X81)
 - 2. S-10 4X2 REG. CAB (CS10603/E63/X96)
 - 3. S-10 4X2 REG. CAB (CS10803/E63)
 - 4. S-10 4X2 MAXI CAB (CS10653/E63)
 - 5. S-10 EL 4X4 REG. CAB (CT10603/E63/X81)
 - 6. S-10 4X4 REG. CAB (CT10603/E63/X96)
 - 7. S-10 4X4 REG. CAB (CT10803/E63)
 - 8. S-10 4X4 MAXI CAB (CT10653/E63)

NOTE: Refer to Dealer Order Guide for Updated Option Availability.

OPTION	CODE	DESCRIPTION	RESTRICTIONS	MODELS			
				2-WHEEL DRIVE		4-WHEEL DRIVE	
				1	3	5	7
MIRRORS							
Exterior, Below-Eye-Line Type	D44	Black Incl w/YC2 Tahoe Mirror Head is 6.0" x 7.0"					
Interior	DC4	Rear View w/Dual Reading Lamps					
Lighted Visor	DH6	RH and LH Visors					
MOLDINGS							
Wheel Opening	B74	Black					
OPTION PACKAGE EL	X97	Incls Rear Step Bumper, 20-Gallon Fuel Tank and Full Size Spare Tire	20 Gal Tank Std on 4-Wheel Drive Model				
PAINT		(See Color and Trim)					
Solid	ZY1						
Special Two-Tone	ZY3	Incls Chromed Bumpers and Upper Body Stripe					
Deluxe Two-Tone	ZY4		Reqs YC2 Tahoe				
RADIO EQUIPMENT							
Electronically-Tuned AM Radio w/digital clock	UT5	14 Presets, Digital Display, Two 4" x 6" Front Speakers					
Electronically-Tuned AM/FM Stereo Radio w/Seek-Scan, Stereo Cassette Tape and Digital Clock	UM6	Description for UM6, UM7 and UX1: 14 Presets, Digital Display Two 4" x 6" Front Speakers, Two 6" x 9" ERS Rear Speakers, Located in the Side Panels on 2-doors and two 6" Round ERS Rear Speakers in Rear Doors on 4-doors, 28 Watts Total Power					
Electronically-Tuned AM/FM Stereo Radio w/Seek-Scan and Digital Clock	UM7						
Electronically-Tuned AM Stereo/FM Stereo Radio w/Seek-Scan and Stereo Cassette Tape w/Search-Repeat, Graphic Equalizer and Digital Clock	UX1						
Electronically-Tuned AM/FM Stereo Radio w/Seek-Scan, Compact Disc Player and Digital Clock	U1C	14 Presets, Digital Display Two 4" x 6" ERS Front Speakers in Instrument Panel, Two 6" x 9" Coaxial Speakers in Rear Side Panels on 2-doors and Two 6" Round Coaxial Speakers in Rear Doors on 4-doors, 28 Watts Total Power Output					
Radio Delete	UL5						
SEATING	AJ2*	Vinyl Jump, Rear	Reqs Bucket Seats				
SHIELD PACKAGE	ZM5	Incls Transfer Case and Front Differential Skid Plates, Fuel Tank and Steering Linkage Shields	S-10 4-wheel drive only				
SHOCK ABSORBERS	F51	Front and Rear, Heavy-Duty; Incl w/F60 Springs or ZQ8 Suspension w/L38 or LL2 Eng	N/A ZM6 Off-Road Suspension Package				
SPEED CONTROL, ELECTRONIC	K34	Includes Resume Acceleration Feature					
SPRINGS, Front, Heavy-Duty	F60	Incl F51 Shock Absorbers;	N/A w/ZM6 Off-Road Suspension Package				
Rear, Heavy-Duty	G51	Greater capacity	N/A w/QMW Tires				
STEERING							
Power Not Desired	N51	Manual Steering Gear	S-10 2-wheel drive only; N/A ZQ8 Susp or LB4 or LL2 Eng				
Power	N40	Std on S-10 4-wheel drive Incl w/ZQ8 Susp or QPP Tires when L38 Eng is specified; Req w/LB4 or LL2 Engine					

*This is a temporary seat only.

OPTIONS

1992
S-10 PICKUP

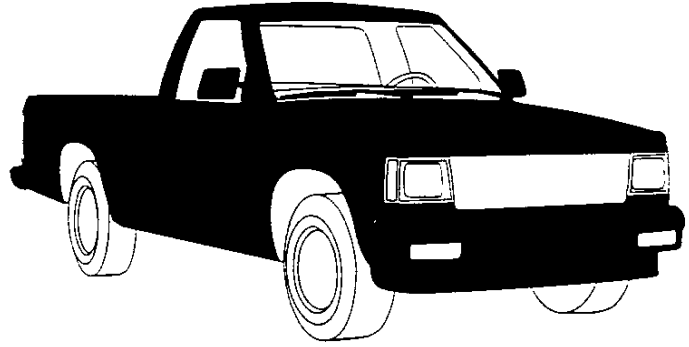
- KEY S - Standard
O - Optional
- Not Available
- 1. S-10 EL 4X2 REG. CAB (CS10603/E63/X81)
 - 2. S-10 4X2 REG. CAB (CS10603/E63/X96)
 - 3. S-10 4X2 REG. CAB (CS10803/E63)
 - 4. S-10 4X2 MAXI CAB (CS10653/E63)
 - 5. S-10 EL 4X4 REG. CAB (CT10603/E63/X81)
 - 6. S-10 4X4 REG. CAB (CT10603/E63/X96)
 - 7. S-10 4X4 REG. CAB (CT10803/E63)
 - 8. S-10 4X4 MAXI CAB (CT10653/E63)

NOTE: Refer to Dealer Order Guide for Updated Option Availability.

OPTION	CODE	DESCRIPTION	RESTRICTIONS	MODELS			
				2-WHEEL DRIVE		4-WHEEL DRIVE	
				1	3	5	7
STRIPING		(See Color and Trim for Availability)					
Body Striping	D98	Upper Body Accent	O	O	O	O	
SUSPENSION EQUIPMENT							
Sport Chassis Package	ZQ8	Incls ZJ7 Rally Wheels and QPP Tires; w/L38 Incls F51 Shocks and N40 Steering w/Special Steering Ratio. W/L2 Incls F51 Shocks.	-	O	-	-	-
SUSPENSION PACKAGE, OFF-ROAD	ZM6	Incls Gas Shocks, Lgr Torsion Bars, Jounce Bumpers, H.D. Stabilizer Bar, Larger Body Mounts, and Wheel Trim Rings.	-	-	-	O	O
TAHOE	YC2	(See Trim Levels)	-	O	-	O	O
TIRES		(See Wheels and Tires) Incls Front, Rear and Spare					
P195/75R14 BW	QMW	All-Season Steel-Belted Radial	S	S	-	-	-
P205/75R14 BW	QFT	All-Season Steel-Belted Radial	-	O	-	-	-
P205/75R14 WL	QSA	All-Season Steel-Belted Radial	O	O	-	-	-
P215/65R15 WL	QPP	All-Season Steel-Belted Radial; Incls. 15" x 7" Rally Wheels or Aluminum Wheels. Incl w/ZQ8 Susp.	-	O	-	-	-
P205/75R15 BW	QCE	All-Season Steel-Belted Radial	-	-	S	S	S
P205/75R15 WL	QCF	All-Season Steel-Belted Radial	-	-	-	O	O
P205/75R15 WOL	QJL	On-Off Road Steel-Belted Radial	-	-	-	O	O
P235/75R15 WOL	QEB	On-Off Road Steel-Belted Radial	-	-	-	O	O
TRAILERING SPECIAL EQUIPMENT (See Trailering Guide)	Z82	Heavy-Duty; Incls 7-lead Wiring Harness, HD Flasher, Weight Dist Platform Hitch	-	O	O	-	O
TRANSFER CASE	NP1	Electronic Shift	-	-	-	O	O
TRANSMISSIONS		(See Powertrains)					
5-Speed Manual w/Overdrive	MM5		S	S	S	S	S
4-Speed Auto w/Overdrive	MX0		O	O	O	O	O
TRIM, BLACKOUT PKG.	ZQ9	Incls black base grille, body-color painted front and rear bumpers with rub strips, B74 black wheel lip moldings and black taillamp bezels	-	O	O	-	O
WHEEL TRIM							
Trim Rings	P06	Incl w/YC2 Tahoe, ZM6 Susp, or Rally Wheels	-	O	O	O	S
WHEELS							
Aluminum, Cast	N60	15" x 7"	-	O	O	-	-
Aluminum, Cast	N90	15" x 7"	-	-	-	-	O
	5P2	15" x 7"	-	-	-	-	O
Rally	ZJ7	14" x 6" w/Trim Rings	O	O	O	-	-
WINDOWS							
Sliding Rear	A28	For flow through ventilation	-	O	O	-	O

SOLID COLOR

(ZY1)



Solid Paint (ZY1) is standard on all models with the EL X81. Standard S-10 or Tahoe YC2 trim level. The Tahoe trim level also includes bodyside moldings, bright wheel opening moldings and a chrome front bumper with a black rub strip. All painted areas of the cab, front end sheet metal and box are the same color. The chart below lists the exterior paint combinations and interior color combinations recommended by Chevrolet. They are the only interior and exterior color combinations available. Also noted in the chart below are available D98 stripe colors. For more information, refer to Seats and Interior Trim pages as well as the Truck Order Guide.

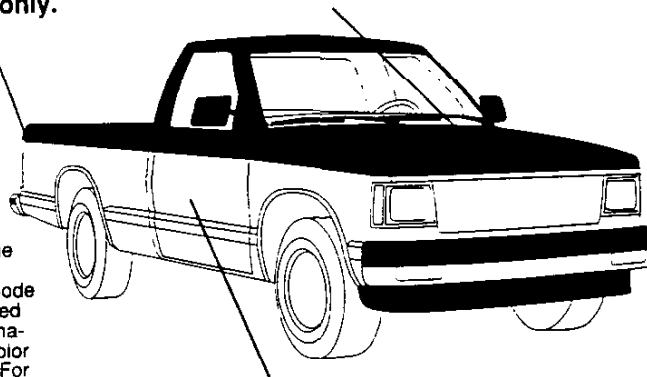
KEY: ● — Recommended

EXTERIOR COLORS		STRIPE COLORS	INTERIOR COLORS			
COLOR CODE 1	COLOR CODE 2	D98 (Optional)	Blue	Charcoal	Garnet	Gray
12 Frost White	12 Frost White	Blue Mica	●			
	12 Frost White	Black		●	●	●
19 Midnight Black	19 Midnight Black	Silver				●
	19 Midnight Black	Green Mica		●		
	19 Midnight Black	Dark Red and Black			●	
24 Aspen Blue Met.	24 Aspen Blue Met.	Blue Mica	●			
	24 Aspen Blue Met.	Silver		●		●
25 Aquamarine Green	25 Aquamarine Green	Green Mica		●		●
26 Sky Blue	26 Sky Blue	Blue Mica	●			●
44 Forest Green Met.	44 Forest Green Met.	Silver		●		●
47 Royal Blue Met.	47 Royal Blue Met.	Blue Mica	●			
	47 Royal Blue Met.	Silver				●
48 Garnet	48 Garnet	Black		●		
	48 Garnet	Silver				●
	48 Garnet	Red and Dark Red			●	
72 Apple Red	72 Apple Red	Black		●		
	72 Apple Red	Silver			●	●
90 Steel Gray Met.	90 Steel Gray Met.	Silver		●	●	●

SPECIAL TWO-TONE (ZY3)

Stripe is included with S-10 or YC2 only.

Color Code 1



Color Code 2

Special two-tone (ZY3) paint is available on all models with the EL X81, Standard S-10 or Tahoe YC2 trim level. The Tahoe trim level also includes bodyside moldings, bright wheel opening moldings and a chrome front bumper with a black rub strip. For X81 models, Color Code 1 is applied to the areas above the belt styling crease line, and Color Code 2 is applied to the areas below the belt styling crease line. For S-10 and YC2 models, Color Code 1 is applied to the areas above the included stripe and color code 2 is applied to the areas below the stripe. The chart below lists the exterior paint combinations recommended by Chevrolet. They are the only interior and exterior color combinations available. Also noted in the chart are available stripe colors. For more information, refer to Seats and Interior Trim pages as well as the Truck Order Guide.

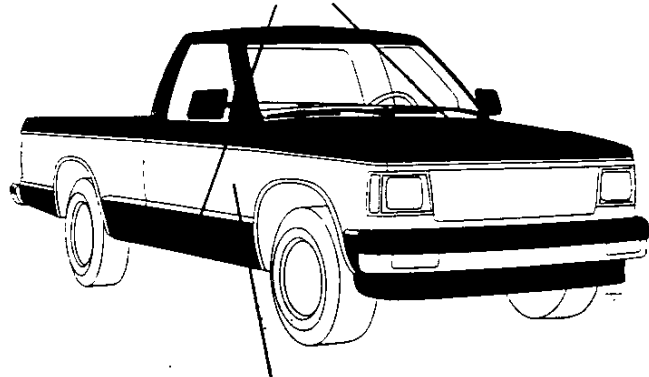
KEY: ● — Recommended

N/A — Not Available

EXTERIOR COLORS		STRIPE COLORS		INTERIOR COLORS			
COLOR CODE 1	COLOR CODE 2	Incl. w/S-10 or YC2 only	w/D98 (opt.)	Blue	Charcoal	Garnet	Gray
12 Frost White	24 Aspen Blue Met.	Blue	Blue Mica	●			●
	47 Royal Blue Met.	Blue	Blue Mica	●			●
	72 Apple Red	White	Black		●	●	●
	90 Steel Gray Met.	White	Black		●		●
	90 Steel Gray Met.	Red	Black			●	●
19 Midnight Black	17 Silver Met.	Silver	Silver		●		●
	17 Silver Met.	Silver	Dk Red & Black			●	●
	25 Aquamarine Green	Seafoam	Green Mica		●		●
	48 Garnet	N/A	Dk Red & Black		●	●	●
	72 Apple Red	Red	Dk Red & Black		●	●	●
	72 Apple Red	Silver	Dk Red & Black			●	●
24 Aspen Blue Met.	17 Silver Met.	Blue	Silver	●			●
	47 Royal Blue Met.	Blue	Blue Mica	●			●
25 Aquamarine Green	17 Silver Met.	Bright Teal	Silver		●		●
	90 Steel Gray Met.	Silver	Silver		●		●
26 Sky Blue	12 Frost White	Blue	Blue Mica	●			●
44 Forest Green Met.	17 Silver Met.	Silver	Silver		●		●
	90 Steel Gray Met.	Silver	Silver		●		●
47 Royal Blue Met.	12 Frost White	Blue	Blue Mica	●			●
	17 Silver Met.	Blue	Silver	●			●
	24 Aspen Blue Met.	Blue	Blue Mica	●			●
	26 Sky Blue	Blue	Blue Mica	●			●
48 Garnet	12 Frost White	N/A	N/A		●	●	●
	17 Silver Met.	Red	Silver		●		●
	17 Silver Met.	Red	Red & Dk Red			●	●
	72 Apple Red	Silver	Black		●		●
	72 Apple Red	Silver	Silver			●	●
	72 Apple Red	Silver	Red & Dk Red			●	●
	90 Steel Gray Met.	Silver	Black		●		●
	90 Steel Gray Met.	Silver	Silver			●	●
72 Apple Red	90 Steel Gray Met.	Red	Red & Dk Red			●	●
	12 Frost White	Silver	Black		●	●	●
	12 Frost White	Silver	Silver		●	●	●
	17 Silver Met.	Red	Silver		●	●	●
	19 Midnight Black	Silver	Black		●	●	●
	19 Midnight Black	Red	Black			●	●
	90 Steel Gray Met.	Silver	Silver		●	●	●
90 Steel Gray Met.	17 Silver Met.	Red	Silver		●	●	●
	19 Midnight Black	Silver	Black		●	●	●

**DELUXE
TWO-TONE**
(ZY4)

Color Code 1



Color Code 2

Deluxe two-tone (ZY4) paint is available on all models with the optional Tahoe YC2 trim level only, which includes body side moldings, bright wheel opening moldings and a chrome front bumper with a black rub strip. The areas above the belt styling crease line and below the moldings are painted Color Code 1. The areas between the line and the moldings are painted Color Code 2. The chart below lists the exterior paint combinations and interior color combinations recommended by Chevrolet. They are the only interior and exterior color combinations available. Also noted in the chart are available D98 stripe colors. For more information, refer to Seats and Interior Trim pages as well as the Truck Order Guide.

KEY: ● — Recommended

N/A — Not Available

EXTERIOR COLORS		STRIPE COLORS	INTERIOR COLORS			
COLOR CODE 1	COLOR CODE 2	w/D98 (optional)	Blue	Charcoal	Garnet	Gray
12 Frost White	24 Aspen Blue Met.	Blue Mica	●			●
	47 Royal Blue Met.	Blue Mica	●			●
	72 Apple Red	Black		●	●	●
	90 Steel Gray Met.	Black		●	●	●
19 Midnight Black	17 Silver	Silver		●		●
	17 Silver	Dk Red & Black			●	
	25 Aquamarine Green	Green Mica		●		●
	48 Garnet	Dk Red & Black		●	●	●
	72 Apple Red	Dk Red & Black		●	●	●
	90 Steel Gray Met.	Silver		●		●
24 Aspen Blue Met.	17 Silver	Silver	●			●
	47 Royal Blue Met.	Blue Mica	●			●
25 Aquamarine Green	17 Silver	Silver		●		●
	90 Steel Gray Met.	Silver		●		●
26 Sky Blue	12 Frost White	Blue Mica	●			●
44 Forest Green Met.	17 Silver	Silver		●		●
	90 Steel Gray Met.	Silver		●		●
47 Royal Blue Met.	12 Frost White	Blue Mica	●			●
	17 Silver	Silver	●			●
	24 Aspen Blue Met.	Blue Mica	●			●
	26 Sky Blue	Blue Mica	●			●
48 Garnet	12 Frost White	N/A		●	●	●
	17 Silver	Silver		●		●
	17 Silver	Red & Dk Red			●	
	72 Apple Red	Black		●		
	72 Apple Red	Silver				●
	72 Apple Red	Red & Dk Red			●	
	90 Steel Gray Met.	Black		●		
	90 Steel Gray Met.	Silver				●
72 Apple Red	12 Frost White	Black		●	●	
	12 Frost White	Silver				●
	17 Silver	Silver		●	●	●
	19 Midnight Black	Black		●	●	●
	90 Steel Gray Met.	Silver		●	●	●
90 Steel Gray Met.	17 Silver	Silver		●	●	●
	19 Midnight Black	Black		●		●

SPECIAL TRAILERING PACKAGES

If you tow a light trailer (up to 2000 lbs. gross weight) with your new S-10 Pickup an optional heavy-duty radiator is required, and a rear step bumper and 5-wire wiring harness are available. The step bumper also requires the installation of a 1 7/8" diameter hitch ball with a 2 1/2" bolt, available as an accessory. The 5-wire harness (RPO U89) is available and includes a heavy-duty flasher. This allows the electrical system to activate trailer lights and other electrical systems.

If you tow a medium trailer (2000 to 4000 lbs. gross weight) or a heavy trailer (4000 to 6000 lbs. gross weight), then the heavy-duty Special Trailering Package (RPO Z82) is a required option. This option is also required, regardless of gross trailer weight, if your trailer tongue weight exceeds 200 lbs. RPO Z82 includes a weight-distributing platform hitch receiver which is bolted to the frame and a 7-wire wiring harness. Both 5-wire and 7-wire wiring harnesses include heavy-duty flasher.



See the chart below for trailering options in addition to the Special Trailering Packages. To help you in ordering, each column lists Regular Production Option (RPO) numbers.

Note that, although S-10 Pickups can be purchased with manual transmissions Chevrolet strongly endorses the 4-speed automatic transmission for towing.

Therefore, the chart below is for S-10 Pickups with automatic transmissions only. Other important trailering information is available in the Owner's Manual of every Chevrolet S-10 Pickup.

(R) — Required

REQUIRED/RECOMMENDED TRAILERING							
Hitch Type	Ball			Ball or Fifth Wheel ¹			
	Light		Medium	Heavy ¹			
Trailer Classification							
Maximum Gross Trailer Weight (lbs.)	2000	2000	4000	5000 ²	6000	4500 ²	6000
Maximum Tongue Load (lbs.)	200	200	500	600	750	550	750
Vehicle Series	2WD	4WD	2WD/4WD	2WD	2WD	4WD	4WD
Gross Vehicle Weight Rating (lbs.)	STD	STD	4600 ³ (R)	4600(R)	4600(R)	5150(R)	5150(R)
Maximum Payload (lbs.)	—	—	—	1684	1659	1886	1876
Engine & Axle Ratio with Maximum Trailer Weight	2.5L	3.73 ⁴	—	—	—	—	—
	4.3L	—	3.08	3.08	3.08	3.42	3.08
		—	—	(4500)	(5500)	—	(5000)
		—	—	3.42	3.42	—	3.42
		—	—	(5000)	(6000)	—	(6000)
Trailering Special Package ⁵	—	—	Z82(R)	Z82(R)	Z82(R)	Z82(R)	Z82(R)
Trailer Hitch	Step Bumper	VF6	VF6	—	—	—	—
	(Weight Distributing) Platform	—	—	Z82(R)	Z82(R)	Z82(R)	Z82(R)
Wiring Harness	5 wire	U89	U89	—	—	—	—
	7 wire	—	—	Z82(R)	Z82(R)	Z82(R)	Z82(R)
Cooling	H.D. Radiator	V01	V01	—	—	—	—
	Transmission Oil	—	—	V02 ³ (R)	—	V02(R)	—
	Engine Oil	—	—	KC4(R)	KC4(R)	KC4(R)	KC4(R)
Power Steering	—	STD	N40(R)	N40(R)	N40(R)	STD	STD
Locking Rear Axle	—	—	G80	G80	G80	G80	G80
Cruise Control	—	—	K34	K34	K34	K34	K34

Trailering Related Standard Equipment:

Power Brakes, 20 Gallon Fuel Tank, 100-Amp Alternator, Front Stabilizer Bar

¹ Optional P235/75R15 tires on 4WD models with standard LB4 engine reduce max. trailer weight by 1000 lbs. with automatic transmission or 500 lbs. with manual transmission

² Manual transmission ratings ³ 5150 for 4WD models

⁴ 2.8L also available with manual transmission

⁵ Not applicable for 5th manual transmission ⁶ Not applicable for 5th wheel trailering

HOW TO USE GCWRs TO DETERMINE POWERTRAIN AND REAR AXLE RATIO FOR TRAILERING

Use Gross Combination Weight Ratings (GCWRs) to determine the engine, transmission and rear axle ratio you will require to tow a trailer with your truck. The chart below shows you the maximum allowable GCWR based on all the available truck engines and rear axle

ratios with automatic or manual transmissions. **The GCWR includes the total loaded weight of both the truck and trailer.** Any available engine may be used for trailering if the GCWR shown is not exceeded. The trailer weight can be increased by 25% if the vehicle speed will not exceed 25 mph.

GROSS COMBINATION WEIGHT RATING (GCWR)																				
With Automatic Transmission																				
GCWR (lb.)	6000	6500	7000	7500	8000	8500	9000	9500	10,000	10,500	11,000	11,500	12,000	12,500	13,500	14,000	14,500	15,000	16,000	19,000
Engines	Rear Axle Ratios																			
2.5L (151) L4 Gas	3.73	4.11																		
4.3L (262) V6 Gas ¹						3.08		3.42												
With Manual Transmission																				
GCWR (lb.)	4500	5000	5500	6000	6500	7500	8000	9000	9500	10,000	11,000	12,000	13,500	14,500	15,000	16,000	19,000			
Engines	Rear Axle Ratios																			
2.5L (151) L4 Gas			3.73	4.11																
2.8L (173) V6 Gas		3.42	3.73																	
4.3 (262) V6 Gas							2.73	3.08	3.42											

¹ The GCWR is reduced by 1000 pounds with an automatic transmission, and 500 pounds with a manual transmission, when the P235/75R15 tires are specified.
When towing a trailer in excess of 3000 lbs. with a truck equipped with a 4-speed automatic transmission, it is recommended to shift to third gear range ("D") instead of overdrive ("O") for normal towing, and to manually downshift as required on uphill and downhill grades.
Note: Model and driveline combinations must be verified by your local dealer for correct emissions equipment.

GENERAL TRAILERING INFORMATION

Chevrolet offers a wide selection of available options for trailering and a few of them are described here.

LOAD-DISTRIBUTING PLATFORM

Required when towing trailers over 2000 lbs. or 200 lbs. tongue load, and included in Z82. Installs quickly and easily.

WIRING HARNESSES

5-wire used with trailers up to 2000 lbs. gross weight and 7-wire for larger trailers. Harnesses tie into vehicle's electrical system to activate trailer lights, plus electric brakes or battery charging with 7-wire harness.

TRUCK WIRING CODE

The following color code for trucks should be used when installing trailer wiring harnesses.

- **Blue.** Used for electric trailer brakes or auxiliary wiring.
- **Red.** Used for battery charging. Connects to starter solenoid. (7-wire harness only).
- **Light Green.** Backup lights (7-wire harness only).
- **Brown.** Taillight and running lights.
- **Yellow.** Left stop and turn signal.
- **Dark Green.** Right stop and turn signal.
- **White.** Ground.

COOLERS AND COOLING

To maintain normal temperatures in coolant, engine and transmission oil, order the following separate options.

- **RPO V02.** This is an extra-capacity heavy-duty automatic transmission oil cooler option. (Included in RPO Z82 Trailering Special Package.)
- **RPO KC4.** This optional engine oil cooler circulates oil through a cooler mounted in LH side tank of the radiator. (Included in RPO Z82 Trailering Package.) Also required for manual transmission towing over 2000-lbs. trailer weight.

SPECIAL TRAILERING PACKAGES

If you tow a light trailer (up to 2000 lbs. gross weight) with your new S-10 Pickup an optional heavy-duty radiator is required, and a rear step bumper and light-duty 5-wire wiring harness are available. The step bumper also requires the installation of a 1 7/8"-diameter hitch ball with a 2 1/2" bolt, available as an accessory. The 5-wire harness (RPO U89) is available and includes a heavy-duty flasher. This allows the electrical system to activate trailer lights and other electrical systems.

If you tow a medium trailer (2000 to 4000 lbs. gross weight) or a heavy trailer (4000 to 6000 lbs. gross weight), then the heavy-duty Special Trailering Package (RPO Z82) is a required option. This option is also required, regardless of gross trailer weight, if your trailer tongue weight exceeds 200 lbs. RPO Z82 includes a weight-distributing platform hitch receiver which is bolted to the frame and a heavy-duty 7-wire wiring harness. Both 5-wire and 7-wire wiring harnesses include heavy-duty flasher.



See the chart below for trailering options in addition to the Special Trailering Packages. To help you in ordering, each column lists Regular Production Option (RPO) numbers.

Note that, although S-10 Pickups can be purchased with manual transmissions Chevrolet strongly endorses the 4-speed automatic transmission for towing.

Therefore, the chart below is for S-10 Pickups with automatic transmissions only. Other important trailering information is available in the Owner's Manual of every Chevrolet S-10 Pickup.

(R) — Required

REQUIRED/RECOMMENDED TRAILERING ¹								
Hitch Type			Ball, Fifth Wheel ¹					
	Trailer Classification		Light	Medium	Heavy/5th Wheel ¹			
Maximum Gross Trailer Weight (lbs.) ²	2000	2000	4000	5000 ²	6000	4500 ²	6000	
Maximum Tongue Load (lbs.)	200	200	500	600	750	550	750	
Vehicle Series	2WD	4WD	2WD/4WD	2WD	2WD	4WD	4WD	
Gross Vehicle Weight Rating (lbs.)	STD	STD	4600 ³ (R)	4600(R)	4600(R)	5150(R)	5150(R)	
Maximum Payload (lbs.)	—	—	—	1684	1659	1886	1876	
Engine & Axle Ratio with Maximum Trailer Weight	2.5L	3.73	—	—	—	—	—	
		4.3L	—	3.08	3.08	3.08	3.42	3.08
		—	—	—	(4500) 3.42 (5000)	(5500) 3.42 (6000)	—	(5000) 3.42 (6000)
Trailering Special Package	—	—	Z82(R)	Z82(R)	Z82(R)	Z82(R)	Z82(R)	
Trailer Hitch	Step Bumper	VF6	VF6	—	—	—	—	
	(Weight Distributing) Platform	—	—	Z82(R)	Z82(R)	Z82(R)	Z82(R)	
Wiring Harness	5 wire	U89	U89	—	—	—	—	
	7 wire	—	—	Z82(R)	Z82(R)	Z82(R)	Z82(R)	
Cooling	H.D. Radiator	VO1(R)	VO1(R)	—	VO1(R)	—	VO1(R)	
	Transmission Oil	—	—	VO2 ⁴ (R)	—	VO2(R)	—	
	Engine Oil	—	—	KC4(R)	KC4(R)	KC4(R)	KC4(R)	
Power Steering	—	STD	N40(R)	N40(R)	N40(R)	STD	STD	
Mirror Camper Type	—	—	—	—	—	—	—	
Locking Rear Axle	—	—	G80	G80	G80	G80	G80	
Cruise Control	—	—	K34	K34	K34	K34	K34	

Trailering Related Standard Equipment:

Power Brakes, 20 Gallon Fuel Tank, 100-Amp Alternator, Front Stabilizer Bar

¹ Optional P235/75R15 tires on 4WD models reduce max. trailer weight by 1000 lbs. with automatic transmission or manual transmission

² Manual transmission ratings ³ 5150 for 4WD models

⁴ Substitute VO1 H.D. Radiator with manual transmission

**HOW TO USE GCWRs TO
DETERMINE POWERTRAIN
AND REAR AXLE RATIO
FOR TRAILERING**

Use Gross Combination Weight Ratings (GCWRs) to determine the engine, transmission and rear axle ratio you will require to tow a trailer with your truck. The chart below shows you the maximum allowable GCWR based on all the available truck engines and rear axle

ratios with automatic or manual transmissions. **The GCWR includes the total loaded weight of both the truck and trailer.** Any available engine may be used for trailering if the GCWR shown is not exceeded. The trailer weight can be increased by 25% if the vehicle speed will not exceed 25 mph.

GROSS COMBINATION WEIGHT RATING (GCWR)																				
With Automatic Transmission																				
GCWR (lb.)	6000	6500	7000	7500	8000	8500	9000	9500	10,000	10,500	11,000	11,500	12,000	12,500	13,500	14,000	14,500	15,000	16,000	19,000
Engines			Rear Axle Ratios																	
2.5L (151) L4 Gas	3.73	4.11																		
4.3L (262) V6 Gas†						3.08		3.42												
With Manual Transmission																				
GCWR (lb.)				4500	5000	5500	6000	6500	7500	8000	9000	9500	10,000	11,000	12,000	13,500	14,500	15,000	16,000	19,000
Engines			Rear Axle Ratios																	
2.5L (151) L4 Gas					3.73	4.11														
2.8L (173) V6 Gas				3.42	3.73															
4.3 (262) V6 Gas								2.73	3.08	3.42										

† The GCWR is reduced by 1000 pounds with an automatic transmission, and 500 pounds with a manual transmission, when the P235/75R15 tires are specified.
When towing a trailer in excess of 3000 lbs. with a truck equipped with a 4-speed automatic transmission, it is recommended to shift to third gear range ("D") instead of overdrive ("O") for normal towing, and to manually downshift as required on uphill and downhill grades.
Note: Trailering equipment not available on Baja Models.
Note: Model and driveline combinations must be verified by your local dealer for correct emissions equipment.

GENERAL TRAILERING INFORMATION

Chevrolet offers a wide selection of available options for trailering and a few of them are described here.

LOAD-DISTRIBUTING PLATFORM
Required when towing trailers over 2000 lbs. or 200 lbs. tongue load, and included in Z82. Installs quickly and easily.

WIRING HARNESES
5-wire used with trailers up to 2000 lbs. gross weight and 7-wire for larger trailers. Harnesses tie into vehicle's electrical system to activate trailer lights, plus electric brakes or battery charging with 7-wire harness.

- TRUCK WIRING CODE**
The following color code for trucks should be used when installing trailer wiring harnesses.
- **Blue.** Used for electric trailer brakes or auxiliary wiring.
 - **Red.** Used for battery charging. Connects to starter solenoid. (7-wire harness only).
 - **Light Green.** Backup lights (7-wire harness only).
 - **Brown.** Taillight and running lights.
 - **Yellow.** Left stop and turn signal.
 - **Dark Green.** Right stop and turn signal.
 - **White.** Ground.

COOLERS AND COOLING
To maintain normal temperatures in coolant, engine and transmission oil, order the following separate options.

RPO V02. This is an extra-capacity heavy-duty automatic transmission oil cooler option. (Included in RPO Z82 Trailering Special Package.)

RPO KC4. This optional engine oil cooler circulates oil through a cooler mounted in LH side tank of the radiator. (Included in RPO Z82 Trailering Package.) Also required for manual transmission towing over 2000-lbs. trailer weight.

SPECIAL TRAILERING PACKAGES

If you tow a light trailer (up to 2000 lbs. gross weight) with your new S-10 Pickup, an optional heavy-duty radiator is required, and a rear step bumper and 5-wire wiring harness are available. The step bumper also requires the installation of a 1 7/8" diameter hitch ball with a 2 1/2" bolt, available as an accessory. The 5-wire harness (RPO U89) is available and includes a heavy-duty flasher. This allows the electrical system to activate trailer lights and other electrical systems.

If you tow a medium trailer (2000 to 4000 lbs. gross weight) or a heavy trailer (4000 to 6000 lbs. gross weight), then the heavy-duty Special Trailering Package (RPO Z82) is a required option. This option is also required, regardless of gross trailer weight, if your trailer tongue weight exceeds 200 lbs. RPO Z82 includes a weight-distributing platform hitch receiver which is bolted to the frame and a 7-wire wiring harness. Both 5-wire and 7-wire wiring harnesses include heavy-duty flasher.



See the chart below for trailering options in addition to the Special Trailering Packages. To help you in ordering, each column lists Regular Production Option (RPO) numbers.

Note that, although S-10 Pickups can be purchased with manual transmissions Chevrolet strongly endorses the 4-speed automatic transmission for towing.

Therefore, the chart below is for S-10 Pickups with automatic transmissions only. Other important trailering information is available in the Owner's Manual of every Chevrolet S-10 Pickup.

(R) — Required

REQUIRED/RECOMMENDED TRAILERING								
Hitch Type	Ball			Ball or Fifth Wheel ¹				
	Light		Medium	Heavy ¹				
Trailer Classification								
Maximum Gross Trailer Weight (lbs.)	2000	2000	4000	5000 ²	6000	4500 ²	6000	
Maximum Tongue Load (lbs.)	200	200	500	600	750	550	750	
Vehicle Series	2WD	4WD	2WD/4WD	2WD	2WD	4WD	4WD	
Gross Vehicle Weight Rating (lbs.)	STD	STD	4600 ³ (R)	4600(R)	4600(R)	5150(R)	5150(R)	
Maximum Payload (lbs.)	—	—	—	1684	1659	1886	1876	
Engine & Axle Ratio with Maximum Trailer Weight	2.5L	3.73 ⁴	—	—	—	—	—	
		—	3.08	3.08	3.08 (4500)	3.08 (5500)	3.42 (5000)	3.08 (5000)
		—	—	—	3.42 (5000)	3.42 (6000)	—	3.42 (6000)
Trailering Special Package ⁶	—	—	Z82(R)	Z82(R)	Z82(R)	Z82(R)	Z82(R)	
Trailer Hitch	Step Bumper	VF6	VF6	—	—	—	—	
	(Weight Distributing) Platform	—	—	Z82(R)	Z82(R)	Z82(R)	Z82(R)	
Wiring Harness	5 wire	U89	U89	—	—	—	—	
	7 wire	—	—	Z82(R)	Z82(R)	Z82(R)	Z82(R)	
Cooling	H.D. Radiator	V01	V01	—	—	—	—	
Transmission Oil	—	—	V02 ⁵ (R)	—	V02(R)	—	V02(R)	
	Engine Oil	—	—	KC4(R)	KC4(R)	KC4(R)	KC4(R)	
Power Steering	—	STD	N40(R)	N40(R)	N40(R)	STD	STD	
Locking Rear Axle	—	—	G80	G80	G80	G80	G80	
Cruise Control	—	—	K34	K34	K34	K34	K34	

Trailering Related Standard Equipment:

Power Brakes, 20 Gallon Fuel Tank, 100-Amp Alternator, Front Stabilizer Bar

¹ Optional P235/75R15 tires on 4WD models with standard LB4 engine reduce max. trailer weight by 1000 lbs. with automatic transmission or 500 lbs. with manual transmission.

² Manual transmission ratings ³ 5150 for 4WD models ⁴ 2.8L also available with manual transmission

⁵ Not applicable for 5th manual transmission. ⁶ Not applicable for 5th wheel trailering

HOW TO USE GCWRs TO DETERMINE POWERTRAIN AND REAR AXLE RATIO FOR TRAILERING

Use Gross Combination Weight Ratings (GCWRs) to determine the engine, transmission and rear axle ratio you will require to tow a trailer with your truck. The chart below shows you the maximum allowable GCWR based on all the available truck engines and rear axle

ratios with automatic or manual transmissions. **The GCWR includes the total loaded weight of both the truck and trailer.** Any available engine may be used for trailering if the GCWR shown is not exceeded. The trailer weight can be increased by 25% if the vehicle speed will not exceed 25 mph.

GROSS COMBINATION WEIGHT RATING (GCWR)																				
With Automatic Transmission																				
GCWR (lb.)	6000	6500	7000	7500	8000	8500	9000	9500	10,000	10,500	11,000	11,500	12,000	12,500	13,500	14,000	14,500	15,000	16,000	19,000
Engines	Rear Axle Ratios																			
2.5L (151) L4 Gas	3.73	4.11																		
4.3L (262) V6 Gas ¹						3.08		3.42												
With Manual Transmission																				
GCWR (lb.)																				
Engines	Rear Axle Ratios																			
2.5L (151) L4 Gas				3.73	4.11															
2.8L (173) V6 Gas			3.42	3.73																
4.3 (262) V6 Gas							2.73	3.08	3.42											

¹ The GCWR is reduced by 1000 pounds with an automatic transmission, and 500 pounds with a manual transmission, when the P235/75R15 tires are specified. When towing a trailer in excess of 3000 lbs. with a truck equipped with a 4-speed automatic transmission, it is recommended to shift to third gear range ("D") instead of overdrive ("O") for normal towing, and to manually downshift as required on uphill and downhill grades.
Note: Model and driveline combinations must be verified by your local dealer for correct emissions equipment.

GENERAL TRAILERING INFORMATION

Chevrolet offers a wide selection of available options for trailering and a few of them are described here.

LOAD-DISTRIBUTING PLATFORM
Required when towing trailers over 2000 lbs. or 200 lbs. tongue load, and included in Z82. Installs quickly and easily.

WIRING HARNESSES
5-wire used with trailers up to 2000 lbs. gross weight and 7-wire for larger trailers. Harnesses tie into vehicle's electrical system to activate trailer lights, plus electric brakes or battery charging with 7-wire harness.

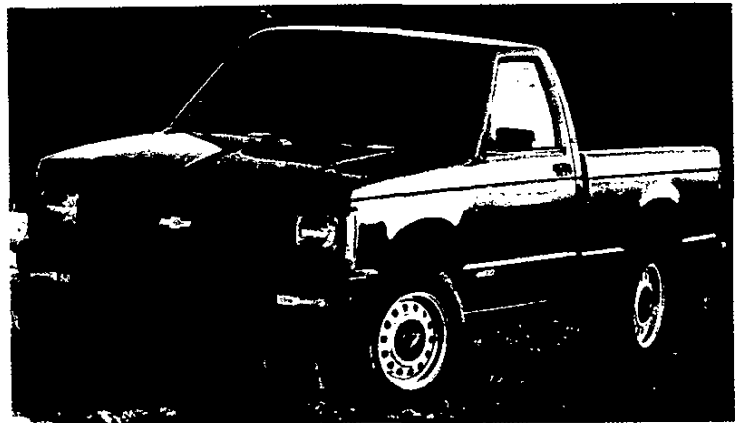
TRUCK WIRING CODE
The following color code for trucks should be used when installing trailer wiring harnesses.

- **Blue.** Used for electric trailer brakes or auxiliary wiring.
- **Red.** Used for battery charging. Connects to starter solenoid. (7-wire harness only).
- **Light Green.** Backup lights (7-wire harness only).
- **Brown.** Taillight and running lights.
- **Yellow.** Left stop and turn signal.
- **Dark Green.** Right stop and turn signal.
- **White.** Ground.

COOLERS AND COOLING
To maintain normal temperatures in coolant, engine and transmission oil, order the following separate options.
RPO V02. This is an extra-capacity heavy-duty automatic transmission oil cooler option. (Included in RPO Z82 Trailering Special Package.)
RPO KC4. This optional engine oil cooler circulates oil through a cooler mounted in LH side tank of the radiator. (Included in RPO Z82 Trailering Package.) Also required for manual transmission towing over 2000-lbs. trailer weight.

EL
(X81)

The EL is a decontented standard trim level designed to offer a price leader vehicle for the value-conscious truck buyer. The low sticker price reflects some omissions from the content of the Standard trim level. The EL is available as a 2-wheel or 4-wheel drive regular cab model only.



Some equipment shown may be optional or extra cost.

The following features are standard.

POWERTRAIN/CHASSIS

- 3 ALTERNATOR: 96 amp Delcotron on 2-wheel drive and 100 amp Delcotron on 4-wheel drive.
- 3 BATTERY: 525 amp CCA.
- 3 BRAKES: Power-assisted: front disc, rear drum. Includes rear-wheel anti-lock braking system that operates in 2-wheel drive only.
- 3 ENGINE: 2.5-liter L4 EFI on 2-wheel drive. 105 net horse-power @ 4800 rpm and 135 lb. ft. of net torque @ 3200 rpm. 4.3-liter V6 EFI on 4-wheel drive. 160 net horse-power @ 4000 rpm and 230 lb.ft. of net torque @ 2800 rpm.
- 3 EXHAUST: Single.
- 3 FRAME: All-welded ladder-type, channel design and boxed front-end section.
- 3 FUEL TANK: 13-gallon (approx.) on 2-wheel drive and 20-gallon (approx.) on 4-wheel drive.
- 3 REAR AXLE: Hypoid. Semi-Floating. Ratio: 3.73:1 on 2-wheel drive 3.08:1 on 4-wheel drive.
- 3 SHOCK ABSORBERS: Front—25 mm. Rear—25 mm.
- 3 STABILIZER BAR: Front—.98 in. on 2-wheel drive and 1.10 in. on 4-wheel drive.
- 3 STEERING: Manual on 2-wheel drive. Ratio 28/24:1. Integral power on 4-wheel drive. Ratio 16/13:1.
- 3 SUSPENSION: Front—Independent with computer-selected coil springs on 2-wheel drive and torsion bars on 4-wheel drive. Rear—Semi-Elliptic two-stage multi-leaf springs.
- 3 TRANSMISSION: 5-speed manual with overdrive.
- 3 TOW HOOKS: Front mounted on 4-wheel drive.

EXTERIOR

- 3 AIR DAM: Black.
- 3 BUMPER: Black.
- 3 COLORS: Choice of ten in a solid paint scheme. See Color and Trim specifications for details.
- 3 GRILLE: Black plastic.
- 3 HEADLAMPS: Single rectangular halogen.
- 3 HORN: Single electric high-note.
- 3 INSULATION: Hood.
- 3 LAMP: Engine Compartment.
- 3 MIRRORS: Black RH and LH fixed with adjustable heads. Head size is 4.0" x 6.5".
- 3 PICKUP BOX: All-welded, double wall construction and steel floor.
- 3 SPARE TIRE/WHEEL: Compact tire and steel wheel. T135/80D15 on 2-wheel drive and T155/90D16 on 4-wheel drive.
- 3 SPARE TIRE CARRIER: Winch-type mounted under frame at rear.
- 3 TIRES: Four P195/75R14 BW all-season steel-belted radials on 2-wheel drive and four P205/75R15 BW all-season steel belted radials on 4-wheel drive.
- 3 WHEELS: Four 14.0" x 6.0" steel wheels painted silver including bright metal hub covers on 2-wheel drive and four 15.0" x 6.0" steel wheels painted silver on 4-wheel drive.

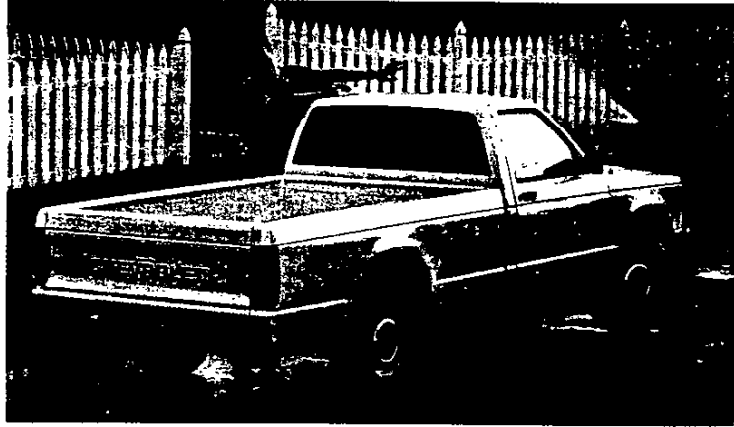
INTERIOR

- 3 ARMRESTS: RH and LH padded integral with door panels.
- 3 CIGARETTE LIGHTER: Located on instrument panel. Includes ashtray light.
- 3 COAT HOOK: RH.
- 3 COLORS: Choice of Blue, Garnet, Charcoal or Gray.
- 3 DOME LAMP: Switches in RH and LH door jambs.
- 3 DOOR SILL PLATE: Black.
- 3 FLOOR COVERING: Full floor embossed black rubber mat.
- 3 GAUGES: Including speedometer, odometer, trip odometer, fuel level, voltmeter, temperature, oil pressure gauges and additional telltale lights.
- 3 GLOVE BOX: Includes locking door and light.
- 3 HEADLAMP WARNING BUZZER: Headlamps on.
- 3 HEADLINER: Color-keyed with partial roof coverage.
- 3 HEATER: Deluxe with windshield and side window defoggers.
- 3 MIRROR: 10-inch rearview.
- 3 RADIO: Delete.
- 3 SEATS: 3-passenger front bench seat with folding backrest, 3-position driver/passenger head restraints and choice of Custom Vinyl or Custom Cloth trim.
- 3 STEERING WHEEL: Deluxe black 4-spoke.
- 3 SUNSHADES: Color-keyed vinyl RH and LH padded.
- 3 TOOLS: Mechanical jack and wheel wrench located in storage compartment on floor behind front seat.
- 3 WINDOWS: Tinted.

STANDARD

The Standard trim level is the base trim level for the S-10 Pickup. It is designed to offer truck buyers a high level of standard features when purchasing a base-level truck.

The following features are standard. Bold type denotes equipment that is in addition to or replaces that of the EL trim.



Some equipment shown may be optional or extra cost

POWERTRAIN/CHASSIS

- 1 ALTERNATOR: 96 amp Delcotron on 2-wheel drive. 100 amp Delcotron on 4-wheel drive.
- 1 BATTERY: 525 amp CCA.
- 1 BRAKES: Power-assisted: front disc, rear drum. Includes rear-wheel anti-lock braking system that operates in 2-wheel drive only.
- 1 ENGINE: 2.5-liter L4 EFI on 2-wheel drive. 105 net horsepower @ 4800 rpm and 135 lb. ft. of net torque @ 3200 rpm. 4.3-liter V6 EFI on 4-wheel drive. 160 net horsepower @ 4000 rpm and 230 lb. ft. of net torque @ 2800 rpm.
- 1 EXHAUST: Single.
- 1 FRAME: All-welded ladder-type, channel design and boxed front-end section.
- 1 FUEL TANK: **20-gallon (approx.)**.
- 1 REAR AXLE: Hypoid, Semi-Floating. Ratio: 3.73:1 on 2-wheel drive. 3.08:1 on 4-wheel drive.
- 1 SHOCK ABSORBERS: Front—25 mm. Rear—25 mm.
- 1 STABILIZER BAR: Front—.98 on 2-wheel drive and 1.10 on 4-wheel drive.
- 1 STEERING: Manual on 2-wheel drive **reg. cabs**. Ratio: 28/24.1:1. Integral power on **2-wheel drive maxi cabs** and all 4-wheel drive. Ratio: 16/13:1.
- 1 SUSPENSION: Front—Independent with computer-selected coil springs on 2-wheel drive and torsion bars on 4-wheel drive. Rear—Semi-Elliptic two-stage multi-leaf springs.
- 1 TOW HOOKS: Front-mounted on 4-wheel drive.
- 1 TRANSMISSION: 5-speed manual with overdrive.

EXTERIOR

- 1 AIR DAM: Black.
- 1 BUMPER: **Black front. (A matching rear bumper is available as an option only).**
- 1 COLORS: Choice of ten in a solid paint scheme. See Color and Trim specifications for details.
- 1 GRILLE: Molded black plastic.
- 1 HEADLAMPS: Single rectangular halogen.
- 1 HORN: Single electric high-note.
- 1 INSULATION: Hood.
- 1 LAMP: Engine Compartment.
- 1 MIRRORS: Black RH and LH fixed with adjustable heads. Head size is 4.0" x 6.5".
- 1 PICKUP BOX: All-welded, double wall construction and steel floor.
- 1 SPARE TIRE/WHEEL: **Full-size**.
- 1 SPARE TIRE CARRIER: Winch-type mounted under frame at rear.
- 1 TIRES: **Five** all-season steel-belted radials. P195/75R14 BW all-season steel-belted radials on 2-wheel drive and P205/75R15 BW all-season steel-belted radials on 4-wheel drive.
- 1 WHEELS: **Five** 14.0" x 6.0" steel painted silver with bright metal hub covers on 2-wheel drive; 15" x 6.0" painted silver on 4-wheel drive.

INTERIOR

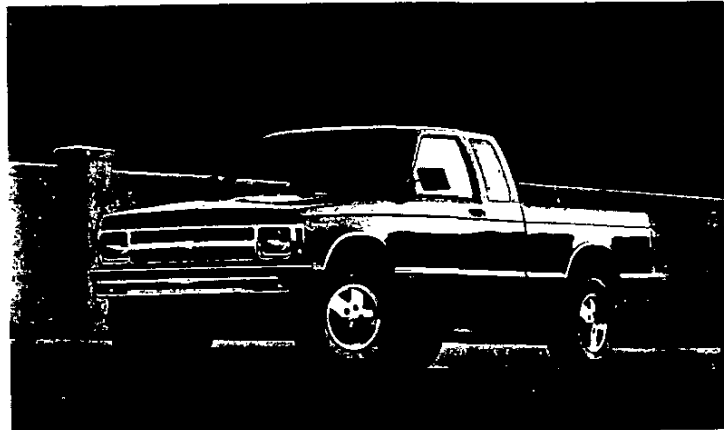
- 1 ARMRESTS: RH and LH padded integral with door panels.
- 1 ASSIST HANDLE: **Located at passenger door windshield pillar on 4-wheel drive only.**
- 1 CIGARETTE LIGHTER: Located on instrument panel. Includes ashtray light.
- 1 COAT HOOK: RH. **Maxi cabs have RH and LH coat hooks.**
- 1 COLORS: Choice of Blue, Garnet, Charcoal or Gray.
- 1 DOME LAMP: Switches in RH and LH door jambs.
- 1 DOOR PANELS: **Color-keyed plastic with map pockets.**
- 1 DOOR SILL PLATE: Black.
- 1 FLOOR COVERING: Embossed black rubber mat.
- 1 GAUGES: Including speedometer, odometer, trip odometer, fuel level, voltmeter, temperature, oil pressure gauges and additional telltale lights.
- 1 GLOVE BOX: Includes locking door and light.
- 1 HEADLAMP WARNING BUZZER: Headlamps on.
- 1 HEADLINER: Color-keyed with partial roof coverage. **Maxi cab models have full roof coverage.**
- 1 HEATER: Deluxe with windshield and side window defoggers.
- 1 INSULATION: **Provided on the dash panel, doors, roof and front floor. Maxi cabs have full floor insulation.**
- 1 MIRRORS: 10-inch rearview.
- 1 RADIO: **Electronically-tuned AM with two 4" x 6" standard front dash speakers, digital clock and fixed mast antenna. (Refer to Delco Electronics brochure in RPO Detail for further information).**
- 1 SEATS: 3-passenger front bench with folding backrest. 3-position driver/passenger head restraints and choice of Custom Vinyl or Custom Cloth.
- 1 STEERING WHEEL: 4-spoke deluxe black.
- 1 SUNSHADES: Padded, color-keyed RH and LH.
- 1 TOOLS: Mechanical jack and wheel wrench located in storage compartment on floor behind front seat.
- 1 WINDOWS: Tinted.

TAHOE

(YC2)

Tahoe trim level is an optional trim level for the S-10 Pickup. It is designed to offer truck buyers an increased level of comfort and convenience features compared to the Standard trim.

The following features are standard. Bold type denotes equipment in addition to or replacing that of the Standard trim.



Some equipment shown may be optional or extra cost.

POWERTRAIN/CHASSIS

- ▶ ALTERNATOR: 96 amp Delcotron on 2-wheel drive. 100 amp Delcotron on 4-wheel drive.
- ▶ BATTERY: 525 amp CCA.
- ▶ BRAKES: Power-assisted; front disc, rear drum. Includes rear-wheel anti-lock braking system that operates in 2-wheel drive only.
- ▶ ENGINE: 2.5-liter L4 EFI on 2-wheel drive. 105 net horsepower @ 4800 rpm and 135 lb. ft. of net torque @ 3200 rpm. 4.3-liter EFI on 4-wheel drive. 160 net horsepower @ 4000 rpm and 230 lb. ft. of net torque @ 2800 rpm.
- ▶ EXHAUST: Single.
- ▶ FRAME: All-welded ladder-type, channel design and boxed front-end section.
- ▶ FUEL TANK: 20-gallon (approx.).
- ▶ REAR AXLE: Hypoid, Semi-Floating. Ratio: 3.73:1 on 2-wheel drive s. 3.08:1 on 4-wheel drive.
- ▶ SHOCK ABSORBERS: Front—25 mm. Rear—25 mm.
- ▶ STABILIZER BAR: Front—.98 on 2-wheel drive and 1.10 on 4-wheel drive.
- ▶ STEERING: Manual on 2-wheel drive reg. cabs. Ratio: 28/24.1:1. Integral power on 2-wheel drive maxi cabs and all 4-wheel drive. Ratio: 16/13:1.
- ▶ SUSPENSION: Front—Independent with computer-selected coil springs on 2-wheel drive and torsion bars on 4-wheel drive. Rear—Semi-Elliptic two-stage multi-leaf springs.
- ▶ TOW HOOKS: Front-mounted on 4-wheel drive.
- ▶ TRANSMISSION: 5-speed manual with overdrive.

EXTERIOR

- AIR DAM: Black.
- BUMPER: **Chrome front including a black rub strip.** (A matching rear bumper is available as an option only).
- ▶ COLORS: Choice of ten in a solid paint scheme. See Color and Trim specifications for details.
- ▶ GRILLE: **Chrome and silver accents.**
- ▶ HEADLAMPS: Single rectangular halogen.
- ▶ HORN: Single electric high-note.
- ▶ INSULATION: Hood.
- LAMP: Engine compartment.
- ▶ MIRRORS: Black RH and LH **below-eye-line** type. Head size is **6.0" x 7.0"**.
- ▶ MOLDINGS: **Black body side w/bright trim and bright wheel opening lip.**
- ▶ PICKUP BOX: All-welded, double wall construction and steel floor.
- ▶ SPARE TIRE/WHEEL: Full-size
- ▶ SPARE TIRE CARRIER: Winch-type mounted under frame at rear.
- TIRES: Five all-season steel-belted radials. P195/75R14 BW on 2-wheel drive and P205/75R15 BW on 4-wheel drive.
- ▶ WHEELS: Five 14.0" x 6.0" **Rally with black center inserts with silver accents and trim rings on 2-wheel drive. Includes a black center insert with gold "bow tie".** Five 15.0" x 6.0" silver steel wheels with trim rings on 4-wheel drive.
- ▶ WINDOWS: **Maxi cabs have swing-out quarter windows.**

INTERIOR

- ▶ ARMRESTS: RH and LH padded integral with door panels.
- ASSIST HANDLE: Located at passenger door windshield pillar on 4-wheel drive only.
- ▶ CIGARETTE LIGHTER: Located on instrument panel. Includes ash tray light.
- ▶ COAT HOOK: RH. Maxi cabs have RH and LH.
- ▶ COLORS: Choice of Blue, Garnet, Charcoal or Gray.
- ▶ DOME LAMP: Switches in RH and LH door jamba.
- ▶ DOOR PANELS: **Consists of special custom cloth upper inserts, carpeted lower insert and coin holder in LH door.**
- ▶ DOOR SILL PLATE: Black.
- ▶ FLOOR COVERING: **Color-keyed full floor carpeting and front floor mats.**
- ▶ GAUGES: Including speedometer, odometer, trip odometer, fuel level, voltmeter, temperature, oil pressure gauges and additional telltale lights.
- ▶ GLOVE BOX: Includes locking door and light.
- ▶ HEADLAMP WARNING BUZZER: Headlamps on.
- HEADLINER: Color-keyed with full roof coverage.
- ▶ HEATER: Deluxe with windshield and side window defoggers.
- ▶ INSULATION: Provided on the dash panel, doors, roof and full floor. **Additional insulation is provided on the cab back, and cowl-to-fender seals.**
- ▶ MIRRORS: 10-inch rearview **RH visor mirror.**
- ▶ RADIO: Electronically-tuned AM with two 4" x 6" standard front dash speakers, digital clock and fixed mast antenna. (Refer to Delco Electronics brochure in RPO Detail for further information).
- SEATS: **Regular Cab Models -** 3-passenger front bench with folding backrest. 3-position driver/passenger head restraints and choice of Custom Vinyl or Custom Cloth. **Maxi Cab Models - 2-passenger front reclining high-back bucket seats with console and choice of Custom Vinyl or Special Custom Cloth.**
- ▶ STEERING WHEEL: 4-spoke deluxe black.
- ▶ SUNSHADES: Padded, color-keyed RH and LH.
- TOOLS: Mechanical jack and wheel wrench located in storage compartment on floor behind front seat.
- WINDOWS: Tinted.

KEY: S Standard O Optional -- Not Offered Bold Print Not Available w/High Altitude Emissions.

MODEL	ENGINE	TRANSMISSION		AXLES					GVWR
		MANUAL 5-SPEED (MM5)	AUTOMATIC 4-SPEED (MX0)	ECONOMY — POWER					
				2.73	3.08	3.42	3.73	4.11	
TWO-WHEEL DRIVE MODELS									
S-10 4X2 EL REGULAR CAB FLEETSIDE CS10603/E63/X81	2.5L L4 (L38)	S	--	--	--	--	S	--	4200
		--	O	--	--	--	S	--	
S-10 4X2 REGULAR CAB FLEETSIDE CS10603/E63/X96	2.5L L4 (L38)	S	--	--	--	--	S ¹	O ²	4200/ 4600
		--	O	--	--	--	S ¹	O ²	
	2.8L V6 (LL2)	S	--	--	--	S ¹	O	--	4200/4600
		--	O	--	S ¹	O	--	--	4200/ 4600
S-10 4X2 REGULAR CAB FLEETSIDE CS10803/E63	2.5L L4 (L38)	S	--	--	--	--	S ¹	O	4200
		--	O	--	--	--	S ¹	O ²	
		S	--	--	--	--	--	S	
	2.8L V6 (LL2)	--	O	--	--	--	S ¹	O ²	4200/4600
		S	--	--	--	S ¹	O ²	--	
		--	O	--	--	--	S ¹	O ²	
S-10 4X2 MAXI CAB FLEETSIDE CS10653/E63	2.5L L4 (L38)	S	--	--	--	--	S ¹	O	4200
		--	O	--	--	--	S ¹	O ²	
		S	--	--	--	--	--	S	
	2.8L V6 (LL2)	--	O	--	--	--	S ¹	O ²	4200/4600
		S	--	--	--	S ¹	O	--	
		--	O	--	--	--	S ¹	O ²	
4.3L V6 (LB4)	S	--	--	S ¹	O	--	--	4200/4900	
	--	O	--	S ¹	O	--	--		
	--	O	--	--	--	--	--		
FOUR-WHEEL DRIVE MODELS									
S-10 4 x 4 EL REGULAR CAB FLEETSIDE CT10603/E63/X81	4.3L V6 (LB4)	S	--	--	S	--	--	--	4650
		--	O	--	S	--	--	--	
S-10 4X4 REGULAR CAB FLEETSIDE CT10603/E63/X96	4.3L V6 (LB4)	S	--	--	S ³	O ²	--	--	4650/5150
		--	O	--	S ³	O ²	--	--	
S-10 4X4 REGULAR CAB FLEETSIDE CT10803/E63	4.3L V6 (LB4)	S	--	--	S ³	O ²	--	--	4650/5150
		--	O	--	S ³	O ²	--	--	
S-10 4X4 MAXI CAB FLEETSIDE CT10653/E63	4.3L V6 (LB4)	S	--	--	S ³	O ²	--	--	4650/5150
		--	O	--	S ³	O ²	--	--	

¹N/A G80 Locking Differential. ²Standard Ratio with High Altitude Emissions. ³N/A QEB P235 Tires or G80 Locking Differential.

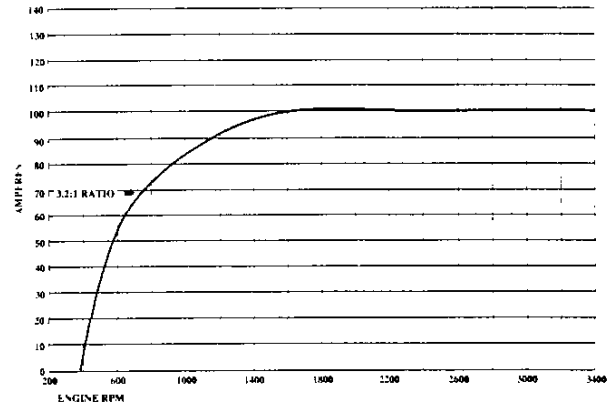
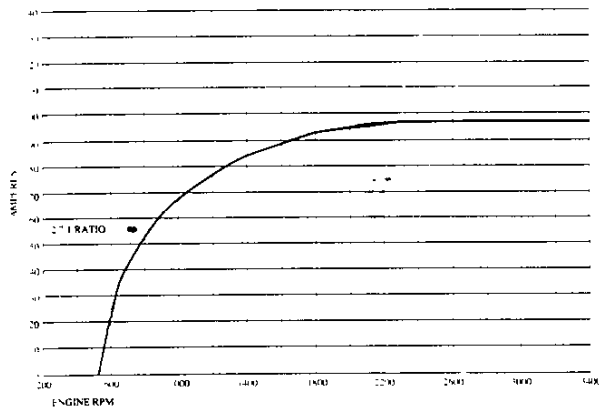
TWO AND FOUR WHEEL DRIVE MODELS

MODEL	S-10 EL REGULAR CAB FLEETSIDE		S-10 REGULAR CAB/MAXI CAB FLEETSIDE		
	MODEL NUMBER	CS10603/E63/X81	CT10603/E63/X81	CS10603/E63/X96 CS10803/E63-CS10653/E63-CT10603/E63/X96 CT10803/E63-CT10653/E63	
ELECTRICAL					
ENGINE	2.5L	4.3L	2.5L ²	2.8L ^{1,2}	4.3L
STANDARD BATTERY					
Cold Cranking Amps @ 0°F	525	525	525	525	525
@ -20°F	390	390	390	390	390
Reserve Capacity Minutes @ 80°F	90	90	90	90	90
OPTIONAL BATTERY	UA1	UA1	UA1	UA1	UA1
Cold Cranking Amps @ 0°F	630	630	630	630	630
@ -20°F	470	470	470	470	470
Reserve Capacity Minutes @ 80°F	115	115	115	115	115
STANDARD ALTERNATOR					
Max. Capacity (Amps)	96	100	96	100	100
Max. Watts @ 12 Volts	1152	1200	1152	1200	1200
Nominal Amp @ Idle approx.	26	36	26	36	36
Drive Pulley Ratio	2.7:1	3.2:1	2.7:1	3.2:1	3.2:1
Model Number	CS130	CS130	CS130	CS130	CS130

¹N/A on CS10803/E63 at 4900 lbs. GVWR.

²N/A on 4-wheel drive models.

ALTERNATOR CURVES



KEY: Regular Type—Manual and Automatic Transmission T-10—Manual Transmission Only Bold Type—Automatic Transmission only

TWO-WHEEL AND FOUR-WHEEL DRIVE MODELS

MODEL	S-10 EL REGULAR CAB FLEETSIDE	S-10 4 X 2 REGULAR CAB/MAXI CAB FLEETSIDE
MODEL NUMBER	CS10603/E63/X81	T10603/E63/X81
		CS10603/E63/X96 CS10803/E63 CS10653/E63 CT10603/E63-CT10803/E63-CT10653/E63

STANDARD COOLING SYSTEM

ENGINE	2.5L	4.3L	2.5L ³	1.8L ¹	4.3L
Radiator Thickness (in.)	.98	.93	.98	.98	.93
Total System Capacity (gal.)	3.0	3.0	2.9	3.0	3.0
Fan—No. Blades x Diameter x Pitch (in.)	5 x 15.0 x 2.05	3 x 18.0 x 2.0	5 x 15.0 x 2.05	5 x 15.0 x 2.05	3 x 18.0 x 2.0

OPTIONAL COOLING SYSTEMS

ENGINE	2.5L	4.3L	2.5L	1.8L	4.3L
AUTOMATIC TRANS.	MX0	MX0	MX0	—	MX0
Radiator Thickness (in.)	.98	.98	.98	—	.93
Total System Capacity (gal.)	2.9	2.9	2.9	—	3.0
Fan—No. Blades x Diameter x Pitch (in.)	5 x 15.0 x 2.05	3 x 18.0 x 2.0	5 x 15.0 x 2.05	—	3 x 18.0 x 2.0
OPT. H.D. RADIATOR	V01	V01	V01	—	V01
Radiator Thickness (in.)	.98	.93	.98	—	.93
Total System Capacity (gal.)	3.0	3.0	3.0	—	3.0
Fan—No. Blades x Diameter x Pitch (in.)	5 x 15.0 x 2.05	3 x 18.0 x 2.0	5 x 15.0 x 2.05	—	3 x 18.0 x 2.0
OPT. AIR CONDITIONING	C60	C60	C60	C60	C60
Radiator Thickness (in.)	.98	.93	.98	.98	.93
Total System Capacity (gal.)	3.0	3.0	3.0	2.9	3.0
Fan—No. Blades x Diameter x Pitch (in.)	5 x 16.9/15.0 ¹ x 2.81	5 x 19.0 x 2.8	5 x 16.9/15.0 ¹ x 2.81	5 x 16.0 x 2.33	5 x 19.0 x 2.8
OPT. ENG. OIL COOLER	—	—	—	—	KC4
Radiator Thickness (in.)	—	—	—	—	.93
Total System Capacity (gal.)	—	—	—	—	2.9
Fan—No. Blades x Diameter x Pitch (in.)	—	—	—	—	3 x 18.0 x 2.0
OPT. H.D. RADIATOR AND TRANS. OIL COOLER	—	—	—	—	V02
Radiator Thickness (in.)	—	—	—	—	1.34
Total System Capacity (gal.)	—	—	—	—	3.0
Fan—No. Blades x Diameter x Pitch (in.)	—	—	—	—	3 x 18.0 x 2.0
OPT. H.D. RADIATOR AND TRANS. OIL COOLER AND ENGINE OIL COOLER	—	—	—	—	V02 & KC4
Radiator thickness (in.)	—	—	—	—	1.34
Total System Cap. (gal.)	—	—	—	—	2.9
Fan—No. Blades x Diameter x Pitch (in.)	—	—	—	—	3 x 18.0 x 2.0

¹ Variable Diameter ² N/A on CS10803/E63 at 4900 lbs. GVWR. ³ N/A on 4-wheel drive models

OPTIONS

1992
S-10 PICKUP

KEY: S - Standard
O - Optional
— Not Available

1. S-10 EL 4X2 REG. CAB (CS10603/E63/X81)
2. S-10 4X2 REG. CAB (CS10603/E63/X96)
3. S-10 4X2 REG. CAB (CS10803/E63)
4. S-10 4X2 MAXI CAB (CS10853/E63)

5. S-10 EL 4 X 4 REG. CAB (CT10603/E63/X81)
6. S-10 4X4 REG. CAB (CT10603/E63/X96)
7. S-10 4X4 REG. CAB (CT10803/E63)
8. S-10 4X4 MAXI CAB (CT10653/E63)

NOTE: Refer to Dealer Order Guide for Updated Option Availability.

OPTION	CODE	DESCRIPTION	RESTRICTIONS	MODELS									
				2-WHEEL DRIVE				4-WHEEL DRIVE					
				1	2	3	4	5	6	7	8		
AIR CONDITIONING	C60	Manual controls	w/L38 or LL2 Engine Incls V01 Cooling; w/LB4 Engine Incls V01 Cooling w/o KC4 or V02 Cooling	O	O	O	O	O	O	O	O	O	O
AIR DAM WITH FOG LAMPS	ANL	Switch on Cluster		O	O	O	O	—	—	—	—	—	—
AXLE, REAR	G80	Locking Differential	Avail on Opt ratio only except where only one ratio is available	—	O	O	O	—	O	O	O	O	O
BATTERY	UA1	Heavy-Duty, 630 Cold Cranking Amps Delco Freedom; included w/V10 Cold Climate		O	O	O	O	O	O	O	O	O	O
BUMPER EQUIPMENT Rear Step	VF6	Chrome Bumper w/YC2 Tahoe or ZY3 Paint; Black Bumper w/o YC2 Tahoe	Req'd on ZQ9	O	O	O	O	O	O	O	O	O	O
COLD CLIMATE PACKAGE	V10	Incls UA1 Battery, Engine Block Heater, Anti-Freeze, Protection to -34° F, Full Dash, Door Insulation Extra Floor Insulation and Backlite Moldings; Also Incls B30 Carpeting w/o YC2 Tahoe	B30 Carpeting	O	O	O	O	O	O	O	O	O	O
CONSOLE	D55	Incl cupholder w/YC2 Tahoe	Reqs High-Back Bucket Seats	—	O	O	O	—	O	O	O	O	O
COOLING SYSTEM H.D. Engine Oil Cooler	KC4	Radiator mounted	Reqs LB4 Eng; N/A V01 Cooling	—	O	O	O	—	O	O	O	O	O
H.D. Radiator	V01	Incl w/C60 Air	N/A V02 Cooling or LL2 Eng or KC4 Cooling;	—	O	O	O	—	O	O	O	O	O
Radiator and Transmission Oil Cooler	V02	For trailer towing and off-road use	Reqs LB4 Eng and MX0 Trans	—	O	O	O	—	O	O	O	O	O
CONVENIENCE PACKAGE Driver's	ZM7	Incls Comfortilt Steering and Intermittent Wipers		—	O	O	O	—	O	O	O	O	O
Operating	ZQ2	Incls Power Door Locks and Power Windows		—	O	O	O	—	O	O	O	O	O
ENGINES		(See Powertrains for Details)											
2.5-liter L4 EFI	L38		S-10 2-wheel drive only	S	S	S	S	—	—	—	—	—	—
2.8-liter V6 EFI	LL2		S-10 2-wheel drive only	—	O	O	O	—	—	—	—	—	—
4.3-liter V6 EFI	LB4		S-10 2-wheel drive	—	O	O	O	S	S	S	S	S	S
FLOOR COVERING													
Floor Carpeting	B30	Full Floor	N/A YC2 Tahoe; Incl w/V10 Cold Climate	O	O	O	O	O	O	O	O	O	O
Mats, Removable	B32	Front, floor	Avail. Std S-10; Incl w/YC2 Tahoe	—	O	O	O	—	O	O	O	O	O
GAGES, ELECTRONIC	U52	Electronic Readout Voltmeter, Temperature, Oil Pressure, Fuel, Speedometer, Tachometer	N/A L38 or LL2 Engine	—	O	O	O	—	O	O	O	O	O
GLASS Heavily-Tinted	AJ1	Rear Window Only. Ext. Cab Incls A20 Swing Out Windows	N/A A28 Window	—	O	O	O	—	O	O	O	O	O
HARNES, WIRING	U89	5-Lead w/H.D. Flasher	N/A Z82 Trailering	—	O	O	O	—	O	O	O	O	O

- KEY S - Standard
O - Optional
— Not Available
- | | |
|---|---|
| 1. S-10 EL 4X2 REG. CAB (CS10603/E63/X81) | 5. S-10 EL 4X4 REG. CAB (CT10603/E63/X81) |
| 2. S-10 4X2 REG. CAB (CS10603/E63/X96) | 6. S-10 4X4 REG. CAB (CT10603/E63/X96) |
| 3. S-10 4X2 REG. CAB (CS10803/E63) | 7. S-10 4X4 REG. CAB (CT10803/E63) |
| 4. S-10 4X2 MAXI CAB (CS10653/E63) | 8. S-10 4X4 MAXI CAB (CT10653/E63) |

NOTE: Refer to Dealer Order Guide for Updated Option Availability

OPTION	CODE	DESCRIPTION	RESTRICTIONS	MODEL'S														
				2-WHEEL DRIVE				4-WHEEL DRIVE										
				1	2	3	4	5	6	7	8							
MIRRORS																		
Exterior, Below-Eye-Line Type	D44	Black Incl w/YC2 Tahoe Mirror Head is 6.0" x 7.0"		O	O	O	O	O	O	O	O	O	O	O	O	O	O	O
Interior	DC4	Rear View w/Dual Reading Lamps		—	O	O	O	—	O	O	O	—	O	O	O	—	O	O
Lighted Visor	DH6	RH and LH Visors		—	O	O	O	—	O	O	O	—	O	O	O	—	O	O
MOLDINGS																		
Wheel Opening	B74	Black		—	O	O	O	—	O	O	O	—	O	O	O	—	O	O
OPTION PACKAGE EL	X97	Incls Rear Step Bumper, 20-Gallon Fuel Tank and Full Size Spare Tire	20 Gal Tank Std on 4-Wheel Drive Model	O	—	—	—	O	—	—	—	O	—	—	—	O	—	—
PAINT		(See Color and Trim)		S	S	S	S	S	S	S	S	S	S	S	S	S	S	S
Solid	ZY1			—	O	O	O	—	O	O	O	—	O	O	O	—	O	O
Special Two-Tone	ZY3	Incls Chromed Bumpers and Upper Body Stripe		—	O	O	O	—	O	O	O	—	O	O	O	—	O	O
Deluxe Two-Tone	ZY4		Reqs YC2 Tahoe	—	O	O	O	—	O	O	O	—	O	O	O	—	O	O
RADIO EQUIPMENT																		
Electronically-Tuned AM Radio w/digital clock	UT5	14 Presets, Digital Display, Two 4" x 6" Front Speakers		O	S	S	S	O	S	S	S	O	S	S	S	O	S	S
Electronically-Tuned AM/FM Stereo Radio w/Seek-Scan, Stereo Cassette Tape and Digital Clock	UM6	Description for UM6, UM7 and UX1: 14 Presets, Digital Display Two 4" x 6" Front Speakers, Two 6" x 9" ERS Rear Speakers, Located in the Side Panels on 2-doors and two 6" Round ERS Rear Speakers in Rear Doors on 4-doors, 28 Watts Total Power		O	O	O	O	O	O	O	O	O	O	O	O	O	O	O
Electronically-Tuned AM/FM Stereo Radio w/Seek-Scan and Digital Clock	UM7			O	O	O	O	O	O	O	O	O	O	O	O	O	O	O
Electronically-Tuned AM Stereo/FM Stereo Radio w/Seek-Scan and Stereo Cassette Tape w/Search-Repeat, Graphic Equalizer and Digital Clock	UX1			—	O	O	O	—	O	O	O	—	O	O	O	—	O	O
Electronically-Tuned AM/FM Stereo Radio w/Seek-Scan, Compact Disc Player and Digital Clock	U1C	14 Presets, Digital Display Two 4" x 6" ERS Front Speakers in Instrument Panel, Two 6" x 9" Coaxial Speakers in Rear Side Panels on 2-doors and Two 6" Round Coaxial Speakers in Rear Doors on 4-doors, 28 Watts Total Power Output		—	O	O	O	—	O	O	O	—	O	O	O	—	O	O
Radio Delete	UL5			S	O	O	O	S	O	O	O	S	O	O	O	S	O	O
SEATING	AJ2 ¹	Vinyl Jump, Rear	Reqs Bucket Seats	—	—	—	O	—	—	—	O	—	—	—	O	—	—	O
SHIELD PACKAGE	ZM5	Incls Transfer Case and Front Differential Skid Plates, Fuel Tank and Steering Linkage Shields	S-10 4-wheel drive only	—	—	—	—	O	O	O	O	—	—	—	O	—	—	O
SHOCK ABSORBERS	F51	Front and Rear, Heavy-Duty; Incl w/F60 Springs or ZQ8 Suspension w/L38 or LL2 Eng	N/A ZM6 Off-Road Suspension Package	—	O	O	O	O	O	O	O	—	—	—	O	—	—	O
SPEED CONTROL, ELECTRONIC	K34	Includes Resume Acceleration Feature		—	O	O	O	—	O	O	O	—	O	O	O	—	O	O
SPRINGS, Front, Heavy-Duty	F60	Incl F51 Shock Absorbers:	N/A w/ZM6 Off-Road Suspension Package	—	—	—	—	—	O	O	O	—	—	—	O	—	—	O
Rear, Heavy-Duty	G51	Greater capacity	N/A w/QMW Tires	—	O	O	O	—	O	O	O	—	O	O	O	—	O	O
STEERING Power Not Desired	N51	Manual Steering Gear	S-10 2-wheel drive only; N/A ZQ8 Susp or LB4 or LL2 Eng	S	S	S	—	—	—	—	—	—	—	—	—	—	—	—
Power	N40	Std on S-10 4-wheel drive Incl w/ZQ8 Susp or QPP Tires when L38 Eng is specified; Req w/ LB4 or LL2 Engine		O	O	O	S	S	S	S	S	O	O	O	S	O	O	S

¹This is a temporary seat only.

OPTIONS

1992
S-10 PICKUP

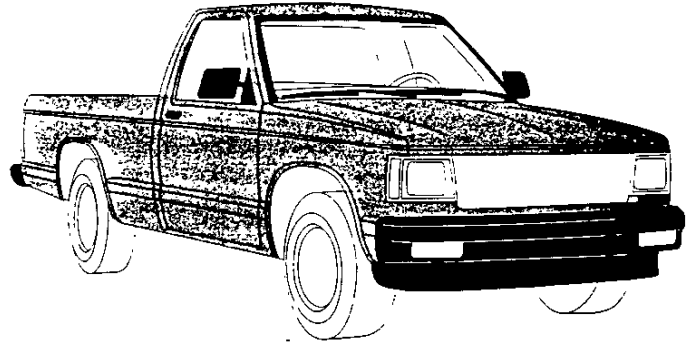
- KEY S - Standard
O - Optional
— Not Available
- 1. S-10 EL 4X2 REG. CAB (CS10603/E63/X81)
 - 2. S-10 4X2 REG. CAB (CS10603/E63/X96)
 - 3. S-10 4X2 REG. CAB (CS10803/E63)
 - 4. S-10 4X2 MAXI CAB (CS10653/E63)
 - 5. S-10 EL 4X4 REG. CAB (CT10603/E63/X81)
 - 6. S-10 4X4 REG. CAB (CT10603/E63/X96)
 - 7. S-10 4X4 REG. CAB (CT10803/E63)
 - 8. S-10 4X4 MAXI CAB (CT10653/E63)

NOTE Refer to Dealer Order Guide for Updated Option Availability.

OPTION	CODE	DESCRIPTION	RESTRICTIONS	MODELS														
				2-WHEEL DRIVE				4-WHEEL DRIVE										
				1	2	3	4	5	6	7	8							
STRIPING		(See Color and Trim for Availability)																
Body Striping	D98	Upper Body Accent		O	O	O	O	O	O	O	O	O	O	O	O	O	O	O
SUSPENSION EQUIPMENT																		
Sport Chassis Package	ZQ8	Incls ZJ7 Rally Wheels and QPP Tires; w/L38 Incls F51 Shocks and N40 Steering w/Special Steering Ratio. W/LL2 Incls F51 Shocks	S-10 2-wheel drive Reg Cabs only Reqs G51 Rear Springs	—	O	O	—	—	—	—	—	—	—	—	—	—	—	—
SUSPENSION PACKAGE, OFF-ROAD	ZM6	Incls Gas Shocks, Lgr Torsion Bars, Jounce Bumpers, H.D. Stabilizer Bar, Larger Body Mounts, and Wheel Trim Rings.	Reqs G51 Springs and QEB Tires; N/A F51 Shocks or F60 Front Springs	—	—	—	—	—	—	O	O	O	O	O	O	O	O	O
TAHOE	YC2	(See Trim Levels)		—	O	O	O	—	O	O	O	O	O	O	O	O	O	O
TIRES		(See Wheels and Tires)																
P195/75R14 BW	QMW	Incls Front, Rear and Spare All-Season Steel-Belted Radial	N/A G51 Rear Springs	S	S	S	S	—	—	—	—	—	—	—	—	—	—	—
P205/75R14 BW	QFT	All-Season Steel-Belted Radial		—	O	O	O	—	—	—	—	—	—	—	—	—	—	—
P205/75R14 WL	QSA	All-Season Steel-Belted Radial		O	O	O	O	—	—	—	—	—	—	—	—	—	—	—
P215/65R15 WL	QPP	All-Season Steel-Belted Radial; Incls. 15" x 7" Rally Wheels or Aluminum Wheels. Incl w/ZQ8 Susp.		—	O	O	O	—	—	—	—	—	—	—	—	—	—	—
P205/75R15 BW	QCE	All-Season Steel-Belted Radial		—	—	—	—	S	S	S	S	S	S	S	S	S	S	S
P205/75R15 WL	QCF	All-Season Steel-Belted Radial		—	—	—	—	—	O	O	O	O	O	O	O	O	O	O
P205/75R15 WOL	QJL	On-Off Road Steel-Belted Radial		—	—	—	—	—	O	O	O	O	O	O	O	O	O	O
P235/75R15 WOL	QEB	On-Off Road Steel-Belted Radial		—	—	—	—	—	O	O	O	O	O	O	O	O	O	O
TRAILERING SPECIAL EQUIPMENT (See Trailering Guide)	Z82	Heavy-Duty; Incls 7-lead Wiring Harness, HD Flasher, Weight Dist Platform Hitch	Reqs LB4 Eng, G51 Springs and KC4 Eng Oil Cooler. W/MX0 Trans reqs V02 Cooling. S-10 2-wheel drive reqs N40 Steering. 2-wheel Drive w/LB4 and MM5 Trans reqs 3.08 Rear Axle. 4-Wheel Drive w/LB4 and MM5 Reqs 3.42 Rear Axle.	—	O	O	O	—	O	O	O	O	O	O	O	O	O	O
TRANSFER CASE	NP1	Electronic Shift	4-Wheel Drive Only.	—	—	—	—	—	O	O	O	O	O	O	O	O	O	O
TRANSMISSIONS		(See Powertrains)																
5-Speed Manual w/Overdrive	MM5			S	S	S	S	S	S	S	S	S	S	S	S	S	S	S
4-Speed Auto w/Overdrive	MX0		N/A LL2 Engine	O	O	O	O	O	O	O	O	O	O	O	O	O	O	O
TRIM, BLACKOUT PKG.	ZQ9	Incls black base grille, body-color painted front and rear bumpers with rub strips, B74 black wheel lip moldings and black taillamp bezels	Reqs YC2 Tahoe trim and VF6 bumper	—	O	O	O	—	O	O	O	O	O	O	O	O	O	O
WHEEL TRIM	P06	Incl w/YC2 Tahoe, ZM6 Susp, or Rally Wheels		—	O	O	O	O	O	O	O	O	O	O	O	O	O	S
WHEELS																		
Aluminum, Cast	N60	15" x 7"	S-10 2-wheel drive only. Reqs QPP tires and F51 shocks	—	O	O	O	—	—	—	—	—	—	—	—	—	—	—
Aluminum, Cast	N90	15" x 7"	S-10 4-wheel drive only	—	—	—	—	—	O	O	O	O	O	O	O	O	O	O
	5P2	15" x 7"	S-10 4-wheel drive only	—	—	—	—	—	O	O	O	O	O	O	O	O	O	O
Rally	ZJ7	14" x 6" w/Trim Rings	Incl w/YC2 Tahoe or QPP Tires	O	O	O	O	—	—	—	—	—	—	—	—	—	—	—
WINDOWS																		
Sliding Rear	A28	For flow through ventilation	N/A AJ1 Glass	—	O	O	O	—	O	O	O	O	O	O	O	O	O	O

SOLID COLOR

(ZY1)



Solid Paint (ZY1) is standard on all models with the EL X81. Standard S-10 or Tahoe YC2 trim level. The Tahoe trim level also includes bodyside moldings, bright wheel opening moldings and a chrome front bumper with a black rub strip. All painted areas of the cab, front end sheet metal and box are the same color. The chart below lists the exterior paint combinations and interior color combinations recommended by Chevrolet. They are the only interior and exterior color combinations available. Also noted in the chart below are available D98 stripe colors. For more information, refer to Seats and Interior Trim pages as well as the Truck Order Guide.

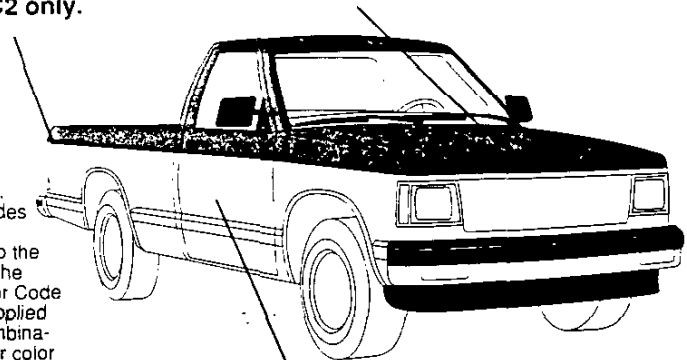
KEY: ● — Recommended

EXTERIOR COLORS		STRIPE COLORS		INTERIOR COLORS		
COLOR CODE 1	COLOR CODE 2	D98 (Optional)	Blue	Charcoal	Garnet	Gray
12 Frost White	12 Frost White	Blue Mica	●			
	12 Frost White	Black		●	●	●
19 Midnight Black	19 Midnight Black	Silver				●
	19 Midnight Black	Green Mica		●		
	19 Midnight Black	Dark Red and Black			●	
24 Aspen Blue Met.	24 Aspen Blue Met.	Blue Mica	●			
	24 Aspen Blue Met.	Silver		●		●
25 Aquamarine Green	25 Aquamarine Green	Green Mica		●		●
26 Sky Blue	26 Sky Blue	Blue Mica	●			●
44 Forest Green Met.	44 Forest Green Met.	Silver		●		●
47 Royal Blue Met.	47 Royal Blue Met.	Blue Mica	●			
	47 Royal Blue Met.	Silver				●
48 Garnet	48 Garnet	Black		●		
	48 Garnet	Silver				●
	48 Garnet	Red and Dark Red			●	
72 Apple Red	72 Apple Red	Black		●		
	72 Apple Red	Silver			●	●
90 Steel Gray Met.	90 Steel Gray Met.	Silver		●	●	●

SPECIAL TWO-TONE (ZY3)

Stripe is included with S-10 or YC2 only.

Color Code 1



Color Code 2

Special two-tone (ZY3) paint is available on all models with the EL X81. Standard S-10 or Tahoe YC2 trim level. The Tahoe trim level also includes bodyside moldings, bright wheel opening moldings and a chrome front bumper with a black rub strip. For X81 models, Color Code 1 is applied to the areas above the belt styling crease line, and Color Code 2 is applied to the areas below the belt styling crease line. For S-10 and YC2 models, Color Code 1 is applied to the areas above the included stripe and color code 2 is applied to the areas below the stripe. The chart below lists the exterior paint combinations recommended by Chevrolet. They are the only interior and exterior color combinations available. Also noted in the chart are available stripe colors. For more information, refer to Seats and Interior Trim pages as well as the Truck Order Guide.

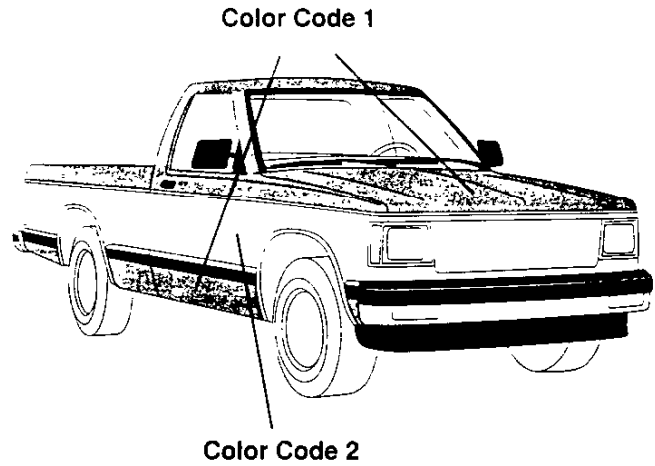
KEY: ● — Recommended

N/A — Not Available

EXTERIOR COLORS		STRIPE COLORS		INTERIOR COLORS			
COLOR CODE 1	COLOR CODE 2	Incl. w/S-10 or YC2 only	w/D98 (opt.)	Blue	Charcoal	Garnet	Gray
12 Frost White	24 Aspen Blue Met.	Blue	Blue Mica	●			●
	47 Royal Blue Met.	Blue	Blue Mica	●			●
	72 Apple Red	White	Black		●	●	●
	90 Steel Gray Met.	White	Black		●	●	●
	90 Steel Gray Met.	Red	Black			●	●
19 Midnight Black	17 Silver Met.	Silver	Silver		●		●
	17 Silver Met.	Silver	Dk Red & Black		●	●	●
	25 Aquamarine Green	Seafoam	Green Mica		●		●
	48 Garnet	N/A	Dk Red & Black		●	●	●
	72 Apple Red	Red	Dk Red & Black		●	●	●
	72 Apple Red	Silver	Dk Red & Black		●	●	●
24 Aspen Blue Met.	17 Silver Met.	Blue	Silver	●			●
	47 Royal Blue Met.	Blue	Blue Mica	●			●
25 Aquamarine Green	17 Silver Met.	Bright Teal	Silver		●		●
	90 Steel Gray Met.	Silver	Silver		●		●
26 Sky Blue	12 Frost White	Blue	Blue Mica	●			●
44 Forest Green Met.	17 Silver Met.	Silver	Silver		●		●
	90 Steel Gray Met.	Silver	Silver		●		●
47 Royal Blue Met.	12 Frost White	Blue	Blue Mica	●			●
	17 Silver Met.	Blue	Silver	●			●
	24 Aspen Blue Met.	Blue	Blue Mica	●			●
	26 Sky Blue	Blue	Blue Mica	●			●
48 Garnet	12 Frost White	N/A	N/A			●	●
	17 Silver Met.	Red	Silver		●	●	●
	17 Silver Met.	Red	Red & Dk Red		●	●	●
	72 Apple Red	Silver	Black		●		●
	72 Apple Red	Silver	Silver			●	●
	72 Apple Red	Silver	Red & Dk Red			●	●
	90 Steel Gray Met.	Silver	Black		●		●
	90 Steel Gray Met.	Silver	Silver			●	●
72 Apple Red	12 Frost White	Silver	Black			●	●
	12 Frost White	Silver	Silver			●	●
	17 Silver Met.	Red	Silver		●	●	●
	19 Midnight Black	Silver	Black		●		●
	19 Midnight Black	Red	Black			●	●
	90 Steel Gray Met.	Silver	Silver		●		●
	90 Steel Gray Met.	Red	Silver			●	●
90 Steel Gray Met.	17 Silver Met.	Red	Silver		●	●	●
	19 Midnight Black	Silver	Black		●		●

DELUXE TWO-TONE (ZY4)

Deluxe two-tone (ZY4) paint is available on all models with the optional Tahoe YC2 trim level only, which includes body side moldings, bright wheel opening moldings and a chrome front bumper with a black rub strip. The areas above the belt styling crease line and below the moldings are painted Color Code 1. The areas between the line and the moldings are painted Color Code 2. The chart below lists the exterior paint combinations and interior color combinations recommended by Chevrolet. They are the only interior and exterior color combinations available. Also noted in the chart are available D98 stripe colors. For more information, refer to Seats and Interior Trim pages as well as the Truck Order Guide.



KEY: ● — Recommended

N/A — Not Available

EXTERIOR COLORS		STRIPE COLORS	INTERIOR COLORS			
COLOR CODE 1	COLOR CODE 2	w/D98 (optional)	Blue	Charcoal	Garnet	Gray
12 Frost White	24 Aspen Blue Met.	Blue Mica	●			●
	47 Royal Blue Met.	Blue Mica	●			●
	72 Apple Red	Black		●	●	●
	90 Steel Gray Met.	Black		●	●	●
19 Midnight Black	17 Silver	Silver		●		●
	17 Silver	Dk Red & Black			●	●
	25 Aquamarine Green	Green Mica		●		●
	48 Garnet	Dk Red & Black		●	●	●
	72 Apple Red	Dk Red & Black		●	●	●
24 Aspen Blue Met.	17 Silver	Silver	●			●
	47 Royal Blue Met.	Blue Mica	●			●
25 Aquamarine Green	17 Silver	Silver		●		●
	90 Steel Gray Met.	Silver		●		●
26 Sky Blue	12 Frost White	Blue Mica	●			●
44 Forest Green Met.	17 Silver	Silver		●		●
	90 Steel Gray Met.	Silver		●		●
47 Royal Blue Met.	12 Frost White	Blue Mica	●			●
	17 Silver	Silver	●			●
	24 Aspen Blue Met.	Blue Mica	●			●
	26 Sky Blue	Blue Mica	●			●
48 Garnet	12 Frost White	N/A		●	●	●
	17 Silver	Silver		●		●
	17 Silver	Red & Dk Red			●	●
	72 Apple Red	Black		●		●
	72 Apple Red	Silver				●
	72 Apple Red	Red & Dk Red			●	●
	90 Steel Gray Met.	Black		●		●
	90 Steel Gray Met.	Silver				●
72 Apple Red	12 Frost White	Black		●	●	●
	12 Frost White	Silver			●	●
	17 Silver	Silver		●	●	●
	19 Midnight Black	Black		●	●	●
	90 Steel Gray Met.	Silver		●	●	●
90 Steel Gray Met.	17 Silver	Silver		●	●	●
	19 Midnight Black	Black		●	●	●