



---

*1994 S-10  
PICKUP  
TRUCK*



# 94 S-10 Pickup

## ORDERING INFORMATION

**Focus Vehicle—S-10 Regular-Cab Short-Box 2WD LS Pickup.** This model appeals to buyers looking for a personal-size pickup with plenty of comfort, performance and versatile utility. When equipped with PEG 6 (AAA6), this model represents an excellent opportunity for high-volume S-10 Pickup sales at your dealership.

**Feature Vehicle—S-10 Extended-Cab 4x4 LS Pickup** (detailed on the following sheet).

### ■ P **erformance**

■ **Rear-Wheel Anti-Lock Brake System**—reduces chance of rear wheel lockup, contributing to controlled straight line stopping (with 2.2L Engine) ■ **2.2 Liter Engine with Multi-Port Fuel Injection**—combines fuel economy with performance, generates 118 hp/130 lb.-ft. of torque ■ **Five-Speed Manual Transmission**—overdrive gear lowers engine speed when cruising, contributing to higher fuel efficiency, reduced engine wear

### ■ O **ptions**

■ **4.3 Liter EFI and CPI V6 Engines**—choice of powerplants to meet different performance and towing needs ■ **Trim Levels**—choice of base, LS decor, or LS with Exterior Appearance Package decor offers wide range of comfort, appearance and convenience features ■ **New Chassis Packages**—three for 2WD, four for 4WD distinct levels of ride control provide clearly defined choices to meet buyer expectations.

### ■ W **ork Credentials**

■ **Two-Tier Loading**—pockets in upper cargo box wall allow for second loading level above wheel wells for cargo-carrying versatility ■ **Double-Wall Cargo Box/Tailgate**—keeps damage on the inside from showing on the outside, helps to keep the truck looking new ■ **Cargo Tie-Down Loops**—in each corner help secure load

### ■ E **asy**

—**TO OWN** ■ **Scotchgard™ Fabric Protector**—on cloth seats, door panels and carpet, resists stains for easy cleanup ■ **Fuse Panel**—easy access, includes spare fuses and insertion tool

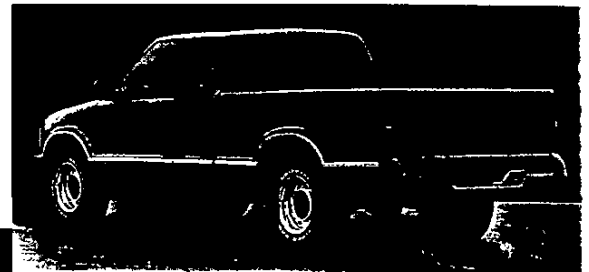
—**ON THE MIND** ■ **Energy-Absorbing Steering Column with Self-Aligning Steering Wheel**—steering column strokes downward under impact while steering wheel gives way and aligns with driver's torso to help reduce injury in certain frontal collisions ■ **Center High-Mounted Stop Lamp**—highly visible signal helps prevent rear end collisions ■ **Roadside Assistance**—24-hour service assistance via Chevrolet's toll-free "800" number. Fast response for towing, repairs, and other services

### ■ R **eliability/Durability**

■ **Anti-Chip Coating**—on lower body panels, helps prevent damage to finish ■ **Frame Stiffened**—added strength, reduces flexing ■ **Underhood-Underbody Corrosion Protection**—protective coatings on body, frame, powertrain, fasteners and steering components improve service life ■ **Bumper-to-Bumper Plus Warranty**—3-year/36,000-mile, no-deductible limited warranty, includes parts, labor. 6-year/100,000-mile body sheet metal rust through protection, 5-year/50,000-mile emissions control system coverage. (Tires covered by their manufacturer.)

PHOTOS OF FOCUS AND FEATURE VEHICLES NOT AVAILABLE AT TIME OF PRINTING.

RED ■ : New Feature  
BLACK ■ : Focus Vehicle Feature



PICTURED ARE S-10 EXTENDED-CAB 2WD LS PICKUP AND S-10 REGULAR-CAB SHORT-BOX 4WD ZR2 WIDE-STANCE SUSPENSION PACKAGE.

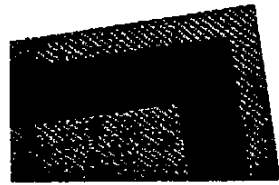
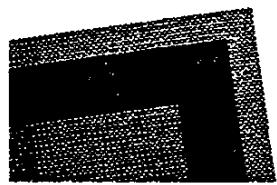
# '94 S-10 Pickup

## Trim Color/Seat Style Availability

Custom Vinyl  
available in Blue and Graphite

Custom Cloth  
available in Beige, Blue, Graphite  
and Gray

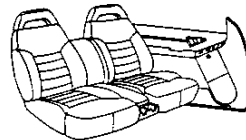
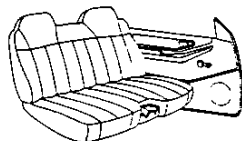
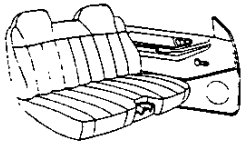
Deluxe Cloth  
available in Beige, Blue, Graphite  
and Gray



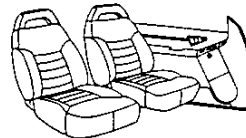
Bench Seat - Base Seat

Bench Seat - Base Seat

Reclining 60/40  
Split Bench Seat - LS



Reclining High-Back  
Bucket Seats - LS



## Four Most Popular Exterior Colors By Percentage

Below are the anticipated four most popular S-10 Pickup and Extended-Cab colors based on national sales volume. They are listed for reference only. To identify the top selling colors in your area, by model, use the Retail Sales Analysis (RSA).



- Frost White ..... 17%
- Midnight Black ..... 15%
- Apple Red ..... 14%
- Dark Cherry Red Metallic ..... 13%

## Four Most Popular Exterior Colors with Corresponding Interior Color Availability

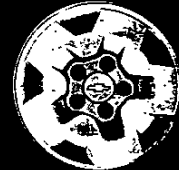
EXTERIOR	INTERIOR			
	Beige	Blue	Graphite	Gray
Frost White	■	■	■	■
Midnight Black	■		■	■
Apple Red			■	■
Dark Cherry Red Metallic	■		■	■

NOTE: New S-10 Pickup and Extended-Cab exterior colors are Purple Metallic, Brilliant Blue Metallic, Raspberry Metallic, Khaki, Teal Green Metallic and Quicksilver Metallic.

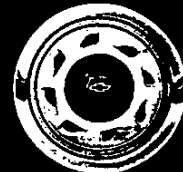
## Wheels



Standard 15" x 7"  
Argent color Steel Wheel with  
brushed Aluminum center cap  
(S10)



Standard on LS, 15" x 7"  
Argent color Steel Wheel with  
Black center cap and  
optional trim ring (S10)



Standard on LS, 15" x 7"  
Argent color Steel Wheel with  
Black center cap and  
optional trim ring (T10)



Optional 15" Cast-Aluminum  
Wheel (T10 only)



Optional 15" Argent color  
Aluminum Wheel (S10 only)



Optional 15" Argent color  
Aluminum Wheel with Chrome  
color center cap available on  
SS package only (option B4U)



# '94 S-10 Pickup

## Forecasted Percent of Mix

### Series

S-10 2WD .....	76%
S-10 4WD .....	24%
Total .....	100%

### Models

Regular-Cab Short-Box .....	51%
Regular-Cab Long-Box .....	14%
Extended-Cab Short-Box .....	35%
Total .....	100%

### Trim Levels

Standard .....	10%
YC3 LS Decor .....	50%
YC5 LS Decor with Exterior Appearance Package .....	40%
Total .....	100%

### Engines

2.2L .....	35%
4.3L (EFI) .....	51%
4.3L (CPI) .....	14%
Total .....	100%

### Transmissions

5-Speed Manual with Overdrive .....	48%
4-Speed Electronically Controlled Automatic with Overdrive .....	52%
Total .....	100%

## Additional Information on Significant Features

- The new **2.2 Liter base engine** offers a number of high technology features. Its roller lifters and oil pump design reduce friction. Valve stems, pistons and piston pins are low in weight to keep reciprocating mass to a minimum. Multi-Port Fuel Injection provides precise fuel metering for improved fuel efficiency, performance and fast hot and cold starts. The 2.2 Liter offers reliability, durability and fuel economy.
- Several new **suspension/chassis packages** are available in 1994. This entirely new packaging concept offers consumers the flexibility of tailoring the vehicle to exactly fit their needs. Whether enthusiastic driving, or hauling heavy payloads are on the agenda, S-10 has the package. There is no compromising with S-10, choose from smooth to firm ride control or payload capacity. Included are:

#### 2WD

Z83 Smooth Solid Ride  
Z85 High Payload  
ZQ5 Sport

#### 4WD

Z83 Smooth Solid Ride  
Z85 High Payload  
ZM6 Off-Road Suspension  
ZR2 Wide Stance Sport Package\*

\*Has a unique frame, front and rear track are 100mm wider than standard model for a more aggressive stance. (Includes track bar on rear axle.)

This includes a variety of suspension components and tires that are exclusively sold as packages to assure the proper ride configuration. S-10 Pickups are designed to meet the needs of a wide cross section of purposes.

- The **doors and tailgate have been revised** to reduce the opening and closing effort. This was accomplished by revising tolerances and dimensions to provide good fit, redesigning the trunion hinges and adhesively bonding the inner and outer panels.

## Deletions

- The **2.5 Liter base engine** has been replaced by the 2.2 Liter. It features more horsepower and improvements in reliability, durability and fuel economy.
- The **2.8 Liter V6** is eliminated from the optional engine line-up, leaving the 4.3 Liter V6 as the only optional engine. The 4.3 Liter is available in the standard version (LB4), or enhanced power version with Central Port Injection (L35). Advantages over the 2.8 Liter include significantly higher levels of power and faster response, a proven record of reliability and durability while offering excellent fuel efficiency.
- Several exterior colors have been dropped for this year:** Dove Gray, Aspen Blue Metallic, Forest Green Metallic, Royal Blue Metallic, Garnet Red and Steel Gray Metallic. New exterior colors are Purple Metallic, Brilliant Blue Metallic, Raspberry Metallic, Dark Cherry Red Metallic, Khaki, Teal Green Metallic and Quicksilver Metallic.

**MODELS****PASSENGERS**

Fleetside 2-wheel drive (CS10603) .....	2/3
Fleetside 2-wheel drive (CS10653) .....	4/5
Fleetside 2-wheel drive (CS10803) .....	2/3
Fleetside 4-wheel drive (CT10603) .....	2/3
Fleetside 4-wheel drive (CT10653) .....	4/5
Fleetside 4-wheel drive (CT10803) .....	2/3

**POWER TEAMS**

## Standard Engine

CS10603/CS10803/CS10653

RPO LN2 2.2 Liter L4 with Multi-Port Fuel Injection (MFI)

CT10603/CT10803/CT10653

RPO LB4 4.3 Liter V6 with Electronic Fuel Injection (EFI)

## Standard Transmission

RPO MM5 5-speed manual

**DIMENSIONS**

Wheelbase (inches)	
CS10603-CT10603 .....	108.3
CS10803-CT10803 .....	117.9
CS10653-CT10653 .....	122.9
Length (overall - inches)	
CS10603-CT10603 .....	188.8
CS10803-CT10803 .....	204.1
CS10653-CT10653 .....	202.8
Width, Maximum (inches) .....	
67.9	
Cargo Box Size (feet)	
CS10603-CT10603/CS10653-CT10653 .....	6.1
CS10803-CT10803 .....	7.4
Length, Cargo Box (inches)	
CS10603-CT10603/CS10653-CT10653 .....	73.1
CS10803-CT10803 .....	89.0
Width, Inside at Floor (inches) .....	
56.5	
Cargo Box Depth (inches) .....	
16.8	
Payload (max. pounds) - (Including Passengers)	
CS10603 .....	1567
CS10653 .....	1422
CS10803 .....	1428
CT10603 .....	1395
CT10653 .....	1432
CT10803 .....	1350
GVWR (pounds)	
CS10603 .....	4200
CS10653-CS10803 .....	4600
CT10603-CT10803 .....	4650
CT10653 .....	5150



## (REGULAR CAB ONLY) STANDARD EQUIPMENT SUMMARY

### BASE TRIM LEVEL

#### EXTERIOR

Alternator: 100 amps  
 Air Dam: Matches bumper color  
 Battery: 525 Cold Cranking Amps  
 Brakes: Vacuum power front disc, rear drum with:  
     Four-wheel anti-lock braking system with V6 engine or  
     rear-wheel anti-lock braking system with 4 cylinder  
     engine  
 Bumper, Front and Rear Step : Dark gray w/dark gray  
     end caps  
 Door Handles: Black finish  
 Engine:  
     S10: 2.2L L4 MFI  
     T10: 4.3L V6 EFI  
 Engine Compartment Lamp  
 Fuel Tank: 20 Gallon capacity  
 Glass, Tinted: Solar-Ray  
 Grille: Dark gray with halogen headlamps  
 Horn: Dual Note  
 Mirrors, Outside Rearview: LH and RH, fixed  
     with adjustable head, black  
 Molding, Windshield: Black  
 Spare Tire: Full-size, mounted under bed  
 Steering: Power  
 Stoplight, Center High-Mounted  
 Suspension, Front independent:  
     S10: Coil springs  
     T10: Torsion bar  
 Suspension, rear semi-floating axle, 2-stage multi-leaf  
     springs  
 Tie-Down, Load, anchors (4)  
 Tires: P205/75R15 all-seasons b/w  
 Tow Hooks, Front: T10 only (2)  
 Transfer Case: Manual shift (T10 only)  
 Transmission: 5-Speed manual  
 Wheels:  
     S10: 15 x 7 Steel, painted argent with brushed aluminum  
         center cap  
     T10: 15 x 7 Steel, painted argent with black center cap  
 Windshield Washer: Dual fluidic nozzles  
 Windshield Wipers: Intermittent (Adjustable)

## STANDARD EQUIPMENT SUMMARY

#### INTERIOR

Armrests: LH and RH padded, integral with door panels  
 Cigarette Lighter: Located on I.P. (Incls ashtray light)  
 Coat Hooks: RH and LH  
 Covering, Back Panel: Carpet  
 Door Sill Plate: Black  
 Door Trim Panels: With LH and RH molded pockets,  
     one-piece molded plastic  
 Floor Covering: Vinyl, dark gray, full floor  
 Glove Box: Non-locking, with door-operated light  
 Grab Handle: Passenger  
 Headlamp-on warning buzzer  
 Headliner: Full coverage, foam-backed w/color-keyed  
     cloth cover  
 Heater: Deluxe, with windshield and side window  
     defoggers  
 Instruments: Fuel level, odometer, oil pressure,  
     speedometer, temperature gage, trip odometer  
     and voltmeter  
 Instrument Panel: Color-keyed full width pad  
 Insulation: Dash panel, doors, cab back, floor and hood,  
     instrument panel and cowl/fender seal  
 Lamps, Interior: Door-operated dome and front floor  
     courtesy  
 Mirror, Interior Rearview: Day/night  
 Moldings and Trim Panels: Front pillar, rear side, rear  
     window lower and jack cover  
 Radio: ETR AM with digital clock (Incls 2 speakers)  
 Scotchgard Fabric protector on cloth trim, door  
     panels and carpeting  
 Seat and Shoulder Belts: Color-keyed  
 Seats: Custom vinyl bench with folding back, dual  
     cupholders  
 Steering Wheel: Deluxe 2-spoke, black  
 Sunshades, padded, color-keyed cloth with LH and RH  
     map strap and RH vanity mirror  
 Tools: Jack with cover and wheel wrench

**(EXTENDED CAB)  
STANDARD EQUIPMENT SUMMARY****(REGULAR CAB)  
LS TRIM LEVEL (RPO YC3)****EXTERIOR**

Alternator: 100 amps  
 Air Dam: Matches bumper color  
 Battery: 525 Cold Cranking Amps  
 Brakes: Vacuum power front disc, rear drum with:  
     Four-wheel anti-lock braking system with V6 engine or  
     rear-wheel anti-lock braking system with 4 cylinder  
     engine  
 Bumpers, Front and Rear Step  
     S10: Color-keyed with color-keyed end caps  
     T10: Dark gray with dark gray end caps  
 Door Handles: Black finish  
 Engine:  
     S10: 2.2L L4 MFI  
     T10: 4.3L V6 EFI  
 Engine Compartment Lamp  
 Fuel Tank: 20 gallon capacity  
 Glass, Tinted: Solar-Ray  
 Grille: Chrome with halogen headlamps  
 Horn: Dual note  
 Mirrors, Outside Rearview: LH and RH,  
     below-eye-line type, black  
 Molding, Windshield: Black  
 Nameplate: B Pillar (LS) Badge  
 Spare Tire: Full-size, mounted under bed  
 Steering: Power  
 Stoplight, Center High-Mounted  
 Suspension, Front Independent:  
     S10: Coil springs  
     T10: Torsion bar  
 Suspension, rear semi-floating axle, 2-stage multi-leaf  
     springs  
 Tie-Down, Load, anchors (4)  
 Tires: P205/75R15 all-seasons b/w  
 Tow Hooks, Front: T10 only (2)  
 Transfer Case: Manual shift (T10 only)  
 Transmission: 5-Speed manual  
 Wheels: 15 x 7 Steel, painted argent with trim ring  
     and black center cap  
 Windshield Washer: Dual fluidic nozzles  
 Windshield Wipers: Intermittent (Adjustable)

**STANDARD EQUIPMENT SUMMARY****INTERIOR**

Armrests: LH and RH padded, integral with door panels  
 Cigarette Lighter: Located on I.P. (Incls ashtray light)  
 Coat Hooks:  
     **Extended Cab:** RH and LH - Foldaway type  
     **Regular Cab:** RH and LH - Fixed  
 Covering, Back Panel: Carpet  
 Door Sill Plate: Black  
 Door Trim Panels: With LH and RH molded pockets,  
     molded plastic with soft cloth upper insert  
 Electrical Power Outlets: Auxiliary (2)  
 Floor Covering: Carpeting, color-keyed, full floor  
 Glove Box: Non-locking, with door-operated light  
 Grab Handle: Passenger  
 Headlamp-on warning buzzer  
 Headliner: Full coverage, foam-backed with color-keyed  
     cloth cover  
 Heater: Deluxe, with windshield and side window  
     defoggers  
 Instruments: Fuel level, odometer, oil pressure,  
     speedometer, temperature gage, trip odometer  
     and voltmeter  
 Instrument Panel: Color-keyed full width pad  
 Insulation: Dash panels, doors, cab back, floor and  
     hood, instrument panel and cowl/fender seal  
 Lamps, Interior: Door-operated dome and front floor  
     courtesy  
 Mirror, Interior Rearview: Day/night with dual reading  
     lamps  
 Moldings and Trim Panels: Front pillar, rear side, rear  
     window lower and jack cover  
 Radio: ETR AM/FM Stereo, with digital clock (C\*10653)  
 Scotchgard Fabric protector on cloth trim, door  
     panels and carpeting  
 Seat and Shoulder Belts: Color-keyed  
 Seats:  
     **Regular Cab:** 60/40 Custom Cloth Split Bench with  
     recliners (Incls armrest and dual cupholders)  
     **Extended Cab:** 60/40 Custom Cloth Split Bench with  
     recliners (Incls armrest, dual cupholders and  
     passenger side easy entry feature, also incl custom  
     vinyl folding rear jump seats  
 Steering Wheel: Deluxe 2-spoke, black  
 Sunshades, padded, color-keyed with slider extensions  
     and RH and LH illuminated vanity mirrors  
 Tools: Jack with cover and wheel wrench  
 Windows: Rear side, swing-out extended cab

**(REGULAR AND EXTENDED)****LS W/EXTERIOR APPEARANCE PKG  
(RPO YC5)**

The following equipment is in addition to or replacing items included in the LS trim level (YC3)

**EXTERIOR**

Bumper: Color-keyed  
Molding, Bodyside: Dark gray with bright insert  
Moldings, Wheel Opening: Bright

**SS PACKAGE (RPO B4U)  
OPTIONAL ON CS10603****INCLUDES:**

(YC3) LS Trim  
(G80) Locking Differential  
(ANL) Fog Lamps  
(N60) Cast Aluminum Wheels with Special Bright Hub Caps  
Body Color Grille  
Special SS Badging (Red "Bowtie" with SS Emblem on doors and tailgate, Red "Bowtie" on grille and hubcaps, and Red "Chevrolet" badge on tailgate)  
(NP5) Leather-Wrapped Steering Wheel

**REQUIRES:**

AAA2 or AAA6 PEG, (L35) Enhanced 4.3 Liter V6 Engine, (MX0) Automatic Transmission, (GU6) 3.42 Axle Ratio, (ZQ8) Sport Suspension Package and (ZY1) Solid Paint (See Paint Charts for color availability)

**WIDE STANCE SUSPENSION PACKAGE  
(RPO ZR2) (OPTIONAL ON CT10603)****INCLUDES:**

4650 GVWR  
Unique revised frame for wider tread. Front tread (61.2") is 3.9" wider than standard. Rear Tread (59.1") is 3.9" wider than standard  
Unique strengthened front differential gears and drive axles  
Unique rear axle with 8.5" ring gear, larger wheel bearings and longer, larger diameter axle shafts  
Unique rear suspension with revised multi-leaf springs and added rear axle track bar  
Unique (28 mm vs 25 mm diameter) front stabilizer bar  
46 mm Bilstein gas pressurized shock absorbers  
(ZM5) Underbody Shields  
Unique front fenders and pickup box outer panels with extra wide wheel flares  
Modified jack and spare tire stowage winch  
Body is 3" higher than standard

**REQUIRES:**

AAA2 or AAA6 PEG, (YC3) LS Trim, (GT4) 3.73 Axle Ratio, (LB4) or (L35) 4.3 Liter V6 Engine, (QJJ) 31 x 10.5/R15LT tires and (ZY1) Solid Paint (See Paint Charts for color availability)

**MODEL AND BODY**

Base	Description	Model No	Body
*10,125.00	Fleetside	CS10603	E63
*10,425.00	Fleetside	CS10803	E63

LS	Description	Model No	Body
*11,260.00	Fleetside	CS10603	E63
*11,836.00	Fleetside	CS10803	E63
*12,260.00	Fleetside Ext Cab	CS10653	E63

\*Includes Destination & Handling Charges

**EMISSIONS (Must Be Specified) (Refer Emission Requirements Section)**

- FE9 Federal Emission Requirements
- NG1 New York State Emission Requirements
- YF5 California Emission Requirements
- NB8 California/New York Emission Override (Requires FE9 Federal Emissions)
- NC7 Federal Emission Override (Requires NG1 New York State or YF5 California Emissions)

**SUSPENSION AND POWER TEAMS CHART  
(MUST SPECIFY)**

Required Options (Shaded Area)

**2-WHEEL DRIVE**

MODELS	CS10603	CS10603 CS10653 CS10803	CS10803	CS10603 CS10803	CS10803
<b>SUSPENSION</b>	Z83 (Smooth)	Z85 (Increased Capacity)		ZQ8 (Sport)	
<b>RIDE CHARACTERISTICS</b>	Solid/Smooth	Firm		Performance	
<b>PRIMARY ROAD USE</b>	Paved	Paved/Gravel		Paved	
<b>TRAILERING EQUIP AVAIL</b>	Light-Duty	Heavy-Duty/Light-Duty		Heavy-Duty/Light-Duty	
<b>GVWR</b>	4200	4600	4900	4600	4900
<b>GAWF/GAWR</b>	2500/2300	2500/2700	2500/2700	2500/2700	2500/2700
<b>REQUIRED OPTIONS</b>					
<b>TIRES</b>	QCE/QCF	QCE/QCF	QCE/QCF	QPP	QPP
<b>ENGINE</b>	LN2 (a)	LN2 (a)		LN2 (a)	
<b>TRANSMISSION</b>	MM5 MX0	MM5 MX0		MM5 MX0	
<b>AXLE RATIO</b>	GT4 GT5 (3.73) (4.10)	GT4 (d) GT5 (3.73) (4.10) GT5 (c) (4.10)		GT4 GT5 (3.73) (4.10) GT5 (c) (4.10)	
<b>ENGINE</b>	LB4	LB4 (b)	LB4	LB4 (b)	LB4
<b>TRANSMISSION</b>	MM5 MX0	MM5 MX0	MM5 MX0	MM5 MX0	MM5 MX0
<b>AXLE RATIO</b>	GU2 (a) GU4 (a) (2.73) (3.08) GU4 GU6 (3.08) (3.42)	GU2 (a) GU4 (a) (2.73) (3.08) GU4 GU6 (3.08) (3.42)	GU2 (a) GU4 (a) (2.73) (3.08) GU4 GU6 (3.08) (3.42)	GU2 (a) GU4 (a) (2.73) (3.08) GU4 GU6 (3.08) (3.42)	GU2 (a) GU4 (a) (2.73) (3.08) GU4 GU6 (3.08) (3.42)
<b>ENGINE</b>	L35	L35 (b)	L35	L35 (b)	L35
<b>TRANSMISSION</b>	MX0	MX0	MX0	MX0	MX0
<b>AXLE RATIO</b>	GU4 (3.08) (a) GU6 (3.42)	GU4 (3.08) (a) GU6 (3.42)	GU4 (3.08) (a) GU6 (3.42)	GU4 (3.08) (a) GU6 (3.42)	GU4 (3.08) (a) GU6 (3.42)

- (a) N/A G80 Locking Differential
- (b) N/A CS10803 w/4600 GVWR
- (c) N/A CS10603
- (d) N/A CS10653

THE LOWEST NUMERICAL AXLE RATIO HAS BEEN ENGINEERED TO COVER THE WIDEST RANGE OF APPLICATIONS AND OFFER THE BEST FUEL ECONOMY

(Continued on Page 6)

REVISED: 1-10-94

1994 ORDER GUIDE

S/T PICKUP  
Page 5

Prices Shown Are Manufacturer's Suggested Retail Prices (MSRP) At The Time Of Publication. These Prices Are To Be Used Only As An Aid To Inventory Management Since MSRP Figures Change Periodically. The Vehicle Price Schedule Is The Official Pricing Documentation Of Chevrolet Motor Division And Should Be Used In Discussing Vehicle Prices With Potential Buyers. The Model Prices Shown In The Order Guide Include The T... Charges.

**MODEL AND BODY**

Base	Description	Model No	Body	LS	Description	Model No	Body
*14,625.00	Fleetside	CT10603	E63	*15,760.00	Fleetside	CT10603	E63
*14,925.00	Fleetside	CT10803	E63	*16,336.00	Fleetside	CT10803	E63
				*16,780.00	Fleetside Ext Cab	CT10653	E63

\*Includes Destination & Handling Charges

**EMISSIONS (Must Be Specified) (Refer Emission Requirements Section)**

- FE9 Federal Emission Requirements
- NG1 New York State Emission Requirements
- YF5 California Emission Requirements
- NB8 California or New York Emission Override (Requires FE9 Federal Emissions)
- NC7 Federal Emission Override (Requires NG1 New York State or YF5 California Emissions)

**SUSPENSION AND POWER TEAMS CHART  
(MUST SPECIFY)**

Required Options (Shaded Area)

**4-WHEEL DRIVE**

MODELS	CT10603 CT10803	CT10603 CT10803 CT10653	CT10603 CT10803 CT10653	CT10603
<b>SUSPENSION</b>	Z83 (Smooth)	Z85 (Increased Capacity)	ZM6 (Off-Road)	ZR2 (Wide Stance)
<b>RIDE CHARACTERISTICS</b>	Solid	Firm	Very Firm	Firm
<b>PRIMARY ROAD USE</b>	Paved/Gravel	Paved/Gravel	Gravel/ Unimproved	On/Off Road
<b>TRAILERING EQUIP AVAIL</b>	Light-Duty	Heavy-Duty/Light-Duty	Heavy-Duty/Light-Duty	Light-Duty
<b>GVWR</b>	4650	5150	5150	4650
<b>GAWF/GAWR</b>	2700/2300	2700/2700	2700/2700	2700/2300
<b>REQUIRED OPTIONS</b>	QCE/QCF/QJL	QEB/QFL	QEB	QJJ
<b>TIRES</b>	LB4	LB4	LB4	LB4
<b>ENGINE</b>	MM5 MX0	MM5 MX0	MM5 MX0	MM5 MX0
<b>TRANSMISSION</b>	GU4 (a) GU4 (a)	GU6 GU6	GU6 GU6	GT4 GT4
<b>AXLE RATIO</b>	(3.08) (3.08)	(3.42) (3.42)	(3.42) (3.42)	(3.73) (3.73)
	GU6 GU6	GT4 (3.73) (b)	GT4 (3.73) (b)	
	(3.42) (3.42)			
<b>ENGINE</b>	L35	L35	L35	L35
<b>TRANSMISSION</b>	MX0	MX0	MX0	MX0
<b>AXLE RATIO</b>	GU4 (a)	GU6 (3.42)	GU6 (3.42)	GT4
	(3.08)	GT4 (3.73) (b)	GT4 (3.73) (b)	(3.73)
	GU6 (3.42)			

- (a) N/A G80 Locking Differential
- (b) Reqs G80 Locking Differential

THE LOWEST NUMERICAL AXLE RATIO HAS BEEN ENGINEERED TO COVER THE WIDEST RANGE OF APPLICATIONS AND OFFER THE BEST FUEL ECONOMY

**MUST SPECIFY:**

AXLE, EMISSION, ENGINE, PEG, SUSPENSION PACKAGE, TIRE AND TRANSMISSION

No Deletions Allowed. Additional Options/Upgrades (Where Indicated) May be Ordered from the Custom Ordering Option Listing.

**S/T REGULAR CAB**

		BASE		LS	
		S P A 1		A A A 2	
				A A A 6	
				S10	T10
*(-150.00)	<b>Preferred Equipment Group 1</b>				
	Fleetside .....	E63	x	x	x
	Radio Delete (A) .....	UL5	x	N/A	N/A
	Rear Step Bumper Delete (Incls Close Out Panel) (B) .....	---	x	N/A	N/A
N.C.	<b>Preferred Equipment Group 2</b>				
	LS Decor (Incl w/C*10603) (N/A C**10803) (C) .....	YC3		x	x
	LS Decor w/Exterior Appearance Package (Incl w/C*10803 Only) .....	YC5		x	x
*235.00	<b>Preferred Equipment Group 6</b>				
	S10603-S10803 w/LB4 or L35 Engine				
	T10603-T10803 w/MM5 Transmission				
	Radio: ETR AM/FM Stereo w/Seek-Scan, Cassette Tape and Clock (D) .....	UM6		x	x
	Window: Sliding Rear (E) .....	A28		x	x
*483.00	<b>S10 Bonus Value</b>				
	w/PEG 6				
	S10603-S10803				
	w/LN2 Engine				
**(-248.00)	<b>PEG 6 Savings</b>				
	Wheels: Aluminum .....	N60		x	N/A
*515.00	<b>T10 Automatic Transmission Bonus Value</b>				
	w/PEG 6				
	T10603-T10803				
	w/MX0 Transmission				
**(-280.00)	<b>PEG 6 Savings</b>				
	Wheels: Aluminum (F) .....	N90		N/A	x

**S/T EXTENDED CAB**

				LS	
				B A A 6	
		B A A 1		S10	T10
N.C.	<b>Preferred Equipment Group 1</b>				
	LS Decor (C) .....	YC3	x	x	x
	Fleetside .....	E63	x	x	x
*235.00	<b>Preferred Equipment Group 6</b>				
	S10653 w/LB4 or L35 Engine				
	T10653 w/MM5 Transmission				
	Radio: ETR AM/FM Stereo w/Seek-Scan, Cassette Tape and Clock (D) .....	UM6		x	x
	Window: Sliding Rear (E) .....	A28		x	x
*483.00	<b>S10 Bonus Value</b>				
	w/PEG 6				
	S10653				
	w/LN2 Engine				
**(-248.00)	<b>PEG 6 Savings</b>				
	Wheels: Aluminum .....	N60		x	N/A
*515.00	<b>T10 Automatic Transmission Bonus Value</b>				
	w/PEG 6				
	T10653				
	w/MX0 Transmission				
**(-280.00)	<b>PEG 6 Savings</b>				
	Wheels: Aluminum (F) .....	N90		N/A	x

\*The Preferred Equipment Group MSRP's Reflect the Basic Group Equipment Prices. For any Option Additions, Upgrades, or Substitutions. Refer to the Vehicle Price Schedule for any Price Differential.  
 \*\*PEG Savings Amount represents the savings for Preferred Equipment Groups

- Allowable Substitutions (Where Available):  
 (A) UL5: May substitute UT5, UM7, UM6, UX1 or U1C Radio  
 (B) Bumper Delete---: May substitute VF6 Rear Step Bumper  
 (C) YC3: May substitute YC5 Exterior Appearance Package  
 (D) UM6: May substitute UX1 or U1C Radio  
 (E) A28: May substitute R6X Sliding Rear Window delete for credit  
 (F) N90: May substitute 5P2 Wheels

## ADDITIONAL OPTIONS

INCL. W/ P.E.G. OPTION			
		<b>ACKNOWLEDGEMENTS:</b>	
		Multiple Order Numbers	
		Preliminary Invoice	
		<b>AIR CONDITIONING:</b>	
		<b>AIR DAM WITH FOG LAMPS:</b> (S10 Only) (Incl w/B4U SS) (N/A SPA1)	
		<b>AXLES, REAR:</b> (Refer Suspension and Power Teams Chart for Availability)	
		2.73 Ratio	
		3.08 Ratio	
		3.42 Ratio	
		3.73 Ratio	
		4.10 Ratio	
		Locking Differential (Incl w/B4U SS) (N/A LN2 Eng)	
		<b>BATTERY:</b> Heavy-Duty, 690 Cold Cranking AMPS (Incl w/V10 Ccc C: <del>max</del> )	
		w/V10	
		w/o V10	
		<b>BUMPER EQUIPMENT:</b>	
		Rear Step (Standard) (Available w/B4U SS or SPA1 only)	
		w/o B4U SS Package	
		w/B4U SS Package or SPA1	
		<b>CHASSIS PACKAGE:</b> (Refer Suspension and Power Teams Chart)	
		Solid Smooth Ride (N/A CT10653)	
		Increased Capacity	
		C*10653/CS10803	
		CS10603	
		CT10*03	
		Sport (S10*03 Only) (Reqs YC3 or YC5 Decor) (N/A SPA1)	
		CS10803	
		CS10603	
		Off-Road (T10 Only)	
		CT10653	
		CT10803	
		CT10603	
		Wide Stance, Sport Performance (Refer Standard Equipment Pages for Content, CT10603 Only) (Reqs YC3 Decor)	
		<b>COLD CLIMATE PACKAGE:</b> (Incls UA1 H.D. Battery and Engine Block Heater)	
		<b>COOLING SYSTEM:</b> Heavy-Duty (Reqs LB4 Engine) (Incl w/Z82 Transmission)	
		w/Z82	
		w/MM5	
		w/MX0	
		<b>CONVENIENCE GROUP:</b> (N/A SPA1)	
		Power Door Locks, Windows and Exterior Electric Remote Mirrors	
		Tilt Steering and Speed Control	
		<b>DECOR:</b> (Refer Standard Equipment for Package Content)	
		Base (Incl w/SPA1 Only)	
		LS: (N/A SPA1) (N/A C*10803) (Incl w/B4U SS)	
		LS w/Exterior Appearance Package (N/A SPA1)	
		C*10803	
		w/AAA2/BAA1/AAA6/BAA6	
		C*106*3	
		w/AAA2/BAA1/AAA6/BAA6	
		<b>EMISSIONS SYSTEMS:</b> (Refer Emission Requirement Tab Section)	
		Federal Emission Requirements	
		New York State Emission Requirements	
		California Emission Requirements	
		California/New York State Emission Override (Reqs FE9 Federal Emission)	
		Federal Emission Override (Reqs NG1 New York State or YF5 California Emission)	
		<b>ENGINES:</b> (Refer Suspension and Power Teams Chart for Availability)	
		2.2 Liter MFI L4 (S10 Only)	
		4.3 Liter EFI V6 (Incls 4-Wheel ABS)	
		CT10**3	
		CS10**3	
		4.3 Liter CPI V6 (Incls Engine and Transmission Oil Coolers, U16 Tachometer and 4-Wheel ABS)	
		CT10**3	
		CS10**3	
		<b>FLOOR COVERING:</b>	
		Full Floor, Vinyl, Charcoal (Replaces Carpeting) (N/A SPA1 or B32 Floor Mats)	
		Carpet, Full Floor (Incl w/YC3 or YC5 Decor) (Available SPA1 Only)	
		Auxiliary Front Floor Mats (Reqs B30 Carpet w/SPA1)	
		<b>LICENSE PLATE BRACKET:</b> Front	
		<b>MIRRORS:</b> Exterior, Below-Eye-Line Type, Black (Incl w/YC3 or YC5 Decor)	
		<b>PAINT, EXTERIOR:</b> (Refer Trim Chart Availability)	
		Solid	
		Special Two-Tone (Incls Graduated Striping) (Reqs YC5 Decor)	
		Sport Two-Tone (Reqs YC3 Decor)	

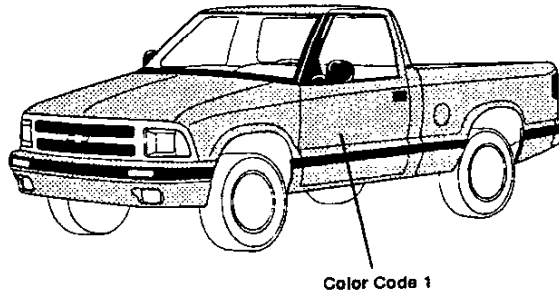
ADDITIONAL OPTIONS

INCL. W/P.E.G. OPTION		
95.00	UT5	<b>RADIO EQUIPMENT:</b> AM Radio w/Clock (Reqs SPA1)
	UM7	Electronically Tuned AM/FM Stereo Radio w/Seek-Scan and Digital Clock (Std on C*10653) (Available SPA1 Only) (Incl w/YC3 or YCS Decor)
N.C.		w/AAA2/BAA1
226.00	6	w/SPA1
N.C.	UM6	Electronically Tuned AM/FM Stereo Radio w/Seek-Scan, Stereo Cassette Tape and Digital Clock
122.00		w/AAA6/BAA6
348.00		w/AAA2/BAA1
		w/SPA1
	UX1	Electronically Tuned AM Stereo/FM Stereo Radio w/Seek-Scan, Stereo Cassette Tape with Search and Repeat, Graphic Equalizer and Digital Clock
150.00		w/AAA6/BAA6
272.00		w/AAA2/BAA1
498.00		w/SPA1
	U1C	Electronically Tuned AM Stereo/FM Stereo Radio w/Seek-Scan, Compact Disc Player and Digital Clock (Incls 4 Premium Speakers)
284.00		w/AAA6/BAA6
406.00		w/AAA2/BAA1
632.00		w/SPA1
N.C.	1	UL5 Radio Delete (Available SPA1 Only)
N.C.		<b>SEAT TRIM:</b> (Refer Color and Trim Chart for Availability)
N.C.	V**1	Custom Vinyl Bench Seat (Reqs SPA1)
N.C.	C**1	Custom Cloth Bench Seat (Reqs SPA1)
N.C.	L**3	Deluxe Cloth 60/40 Reclining Split Bench Seat
	L**6	Deluxe Cloth Reclining High Back Bucket Seat (Incls Console)
156.00		C*10653
181.00		C*10*03
126.00	ZM5	<b>SHIELD PACKAGE:</b> (T10 Only) (Incl w/ZR2)
629.00	B4U	<b>SS PACKAGE:</b> (CS10603 Only) (Refer Standard Equipment Pages for Content) (Reqs L35 Eng, MX0 Trans, GU6 Axle, Z08 Sport Chassis Package and Colors 72 Red, 19 Black or 12 White)
	NP5	<b>STEERING WHEEL:</b> Leather Wrapped (N/A SPA1) (Incl w/B4U SS)
54.00		<b>STRIPE:</b> (Refer Color and Trim Chart for Availability)
69.00	D88	Sport (Reqs PEG SPA1)
55.00	D96	Upper Body Side (N/A B4U SS or ZR2 Wide Stance)
59.00	U16	<b>TACHOMETER:</b> (Incl w/L35 Eng)
		<b>TIRES:</b> (B/W: Blackwall, W/L: White Lettered, WOL: White Outline Lettered) (Incls Front, Rear and Spare)
N.C.		<b>All-Seasons Steel Belted Radial Ply</b> (Refer Suspension and Power Teams Chart for Availability and Requirements)
121.00	QCE	P205/75R-15 B/W
N.C.	OCF	P205/75R-15 W/L
N.C.	QPP	P215/65R-15 W/L
N.C.	QFL	P235/75R-15 B/W
170.00	QJL	<b>On-Off Road Steel Belted Radial Ply</b>
N.C.	QEB	P205/75R-15 WOL
182.00		P235/75R-15 WOL
N.C.		w/CT10**3 and ZM6 Chassis Package
		w/CT10**3 and Z85 Chassis Package
N.C.	QJJ	31 x 10.5R-15 B/W (Incl w/ZR2 Chassis Package)
	Z82	<b>TRAILERING SPECIAL EQUIPMENT:</b> Heavy-Duty (Reqs LB4 or L35 Eng) (S10 w/MM5 Trans Reqs GU4 Rear Axle) (T10 w/MM5 Trans Reqs GU6 Rear Axle) (N/A w/Z83 Suspension or ZR2 Wide Stance) (Incls 7-Lead Wiring Harness, Weight Distributing Hitch Platform, Heavy-Duty Flasher) (w/SPA1 or CS10603 and B4U Reqs VF6 Bumper) (w/LB4 Engine also incl V08 H.D. Cooling)
210.00		w/L35 Engine
345.00		w/LB4 Engine and MM5 Transmission
408.00		w/LB4 Engine and MX0 Transmission
123.00	NP1	<b>TRANSFER CASE:</b> Electronic Shift (T10 Only) (N/A SPA1)
927.00	MX0	<b>TRANSMISSIONS</b> (Refer Suspension and Power Teams Chart for Availability)
N.C.	MM5	4-Speed Electronically Controlled Automatic w/Overdrive
		5-Speed Manual w/Overdrive
N.C.	N60	<b>WHEELS:</b> (Spare Wheel is Steel) Aluminum, Argent (S10 Only) (N/A SPA1) (Incl w/B4U SS)
248.00		w/AAA6/BAA6 and LN2 Engine
		w/YC3/YC5
N.C.	N90	Aluminum, Cast (T10 Only) (N/A SPA1)
280.00		w/AAA6/BAA6 and MX0
		w/YC3/YC5
N.C.	5P2	Special Aluminum (T10 Only) (N/A SPA1)
280.00		w/AAA6/BAA6 and MX0
		w/YC3/YC5
N.C.	6	A28 <b>WINDOW:</b> Sliding Rear
113.00		w/AAA6/BAA6
(-113.00)		w/SPA1/AAA2/BAA1
41.00	R6X	<b>WINDOW, SLIDING REAR DELETE:</b> (Reqs AAA6/BAA6)
	U89	<b>WIRING HARNESS:</b> 5-Lead (Lt Duty) (N/A Z82 Trailering)



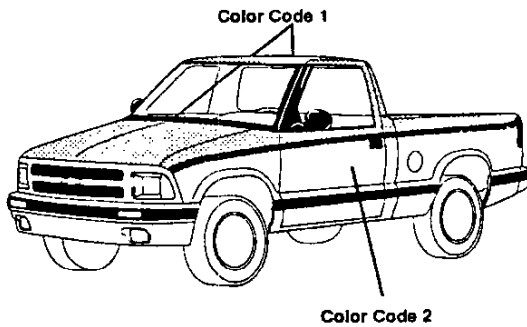
**S/T PICKUP**  
**Paint Applications**

**SOLID PAINT - ZY1**



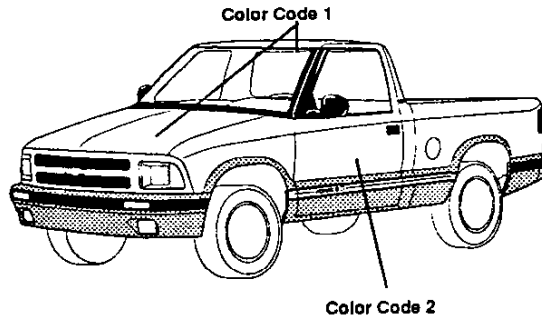
**SPECIAL TWO-TONE PAINT - ZY3**

(Includes Graduated Striping )  
(Available w/YC5 Only)



**CUSTOM TWO-TONE PAINT - ZY7**

(Available w/YC3 Only)



**S/T PICKUP**  
**INTERIOR AND EXTERIOR COLOR AVAILABILITY CHART**

PLEASE NOTE: Below are the interior trim color and exterior paint combinations recommended by Chevrolet. They are the only interior and exterior color combinations available.

**ZY1 PAINT WITHOUT B4U OR ZR2**

TRIM LEVEL Seat Type	Decor	INTERIOR COLORS				D88 Striping w/Std Decor	D96 Striping w/YC3
		Beige	Blue	Graphite	Gray		
BASE INTERIOR (Avail SPA1 Only) Custom Vinyl Bench Seat Custom Cloth Bench Seat	Std		VDD1	VGG1			
LS/LS W/EXT APPEARANCE PKG Deluxe Cloth Reclining Split Bench Seat Deluxe Cloth Reclining High Back Bucket Seat	YC3/YC5	CUU1	CDD1	CGG1	COQ1		
		LUU3	LDD3	LGG3	LOQ3		
		LUU6	LDD6	LGG6	LOQ6		

EXTERIOR COLORS	Color Code 1	Color Code 2	RECOMMENDED INTERIOR TRIM COLORS				D88 Striping w/Std Decor	D96 Striping w/YC3
BLACK, MIDNIGHT	19	19			x	x	Silver (Met)	Silver (Met)
BLACK, MIDNIGHT	19	19	x				Khaki	Silver (Met)
BLUE, BRILLIANT (MET)	22	22			x		Gray (Met)	Silver (Met)
BLUE, BRILLIANT (MET)	22	22		x		x	Silver (Met)	Silver (Met)
GREEN, TEAL (MET)	38	38			x		Gray (Met)	N/A
GREEN, TEAL (MET)	38	38				x	Silver (Met)	N/A
GREEN, TEAL (MET)	38	38	x				Khaki	N/A
* KHAKI	52	52	x		x		Gray (Met)	N/A
PURPLE (MET)	21	21			x	x	Silver (Met)	N/A
QUICKSILVER (MET)	96	96			x	x	Gray (Met)	Black
QUICKSILVER (MET)	96	96		x			Blue Brilliant (Met)	Black
RASPBERRY (MET)	85	85			x		Gray (Met)	N/A
RASPBERRY (MET)	85	85				x	Silver (Met)	N/A
RED, APPLE	72	72			x		Gray (Met)	Black
RED, APPLE	72	72				x	Silver (Met)	Silver (Met)
RED, APPLE	72	72	x				Khaki	Black
RED, DK CHERRY (MET)	94	94			x	x	Silver (Met)	N/A
RED, DK CHERRY (MET)	94	94	x				Khaki	N/A
WHITE, FROST	12	12	x		x	x	Gray (Met)	Black
WHITE, FROST	12	12		x			Blue Brilliant (Met)	Black

\* N/A YC3 LS

**ZY1 PAINT WITH B4U**

TRIM LEVEL Seat Type	Decor	INTERIOR COLORS			
		Beige	Blue	Graphite	Gray
LS Deluxe Cloth Reclining Split Bench Seat Deluxe Cloth Reclining Bucket High Back Seat	YC3	LUU3	LDD3	LGG3	LOQ3
		LUU6	LDD6	LGG6	LOQ6

BLACK, MIDNIGHT	19	19	x		x	x
RED, APPLE	72	72	x		x	x
WHITE, FROST	12	12	x	x	x	x

**ZY1 PAINT WITH ZR2**

TRIM LEVEL Seat Type	Decor	INTERIOR COLORS			
		Beige	Blue	Graphite	Gray
LS Deluxe Cloth Reclining Split Bench Seat Deluxe Cloth Reclining Bucket High Back Seat	YC3	LUU3	LDD3	LGG3	LOQ3
		LUU6	LDD6	LGG6	LOQ6

BLACK, MIDNIGHT	19	19	x		x	x
BLUE, BRILLIANT (MET)	22	22		x	x	x
QUICKSILVER (MET)	96	96		x	x	x
RED, APPLE	72	72	x		x	x
WHITE, FROST	12	12	x	x	x	x

REVISED: 1-10-94

1994 ORDER GUIDE

S/T PICKUP

Page 11

Prices Shown Are Manufacturer's Suggested Retail Prices (MSRP) At The Time Of Publication. These Prices Are To Be Used Only As An Aid To Inventory Management Since MSRP Figures Change Periodically. The Vehicle Price Schedule Is The Official Pricing Documentation Of Chevrolet Motor Division And Should Be Used In Discussing Vehicle Prices With Potential Buyers. The Model Prices Shown In The Order Guide Include The Destination Freight Charges.

**S/T PICKUP**  
**INTERIOR AND EXTERIOR COLOR AVAILABILITY CHART**  
**WITH ZY3 PAINT (Avail YC5 Only)**

**PLEASE NOTE:** Below are the interior trim color and exterior paint combinations recommended by Chevrolet. They are the only interior and exterior color combinations available.

TRIM LEVEL Seat Type	Decor	INTERIOR COLORS			
		Beige	Blue	Graphite	Gray
<b>LS W/EXTERIOR APPEARANCE PKG</b>	YC5				
Deluxe Cloth Reclining Split Bench Seat		LUU3	LDD3	LGG3	LOQ3
Deluxe Cloth Reclining High Back Bucket Seat		LUU6	LDD6	LGG6	LOQ6

EXTERIOR COLORS	Color Code 1	Color Code 2	RECOMMENDED INTERIOR TRIM COLORS				Striping (Graduated)
			Beige	Blue	Graphite	Gray	
<b>BLACK, MIDNIGHT</b>							
Blue, Brilliant (Met)	19	22		x		x	Black
Green, Teal (Met)	19	38	x		x	x	Black
Khaki	19	52	x		x		Black
Quicksilver (Met)	19	96			x	x	Black
Raspberry (Met)	19	85			x	x	Black
Red, Apple	19	72	x		x	x	Black
Red, Dk Cherry (Met)	19	94	x		x	x	Black
<b>BLUE, BRILLIANT (MET)</b>							
Quicksilver (Met)	22	96		x	x	x	Blue / Silver
<b>GREEN, TEAL (MET)</b>							
Quicksilver (Met)	38	96			x	x	Teal, Bright
<b>KHAKI</b>							
Black, Midnight	52	19	x		x		Khaki
White, Frost	52	12	x				Khaki
<b>PURPLE (MET)</b>							
Quicksilver (Met)	21	96			x	x	Purple (Met)
<b>QUICKSILVER (MET)</b>							
Black, Midnight	96	19			x	x	Silver (Met)
Blue, Brilliant (Met)	96	22		x	x	x	Silver (Met)
Green, Teal (Met)	96	38			x	x	Silver (Met)
Purple (Met)	96	21			x	x	Silver (Met)
Raspberry (Met)	96	85			x	x	Silver (Met)
Red, Apple	96	72			x	x	Silver (Met)
Red, Dk Cherry (Met)	96	94			x	x	Silver (Met)
White, Frost	96	12		x	x	x	Silver (Met)
<b>RASPBERRY (MET)</b>							
Black, Midnight	85	19			x	x	Raspberry
Quicksilver (Met)	85	96			x	x	Raspberry
<b>RED, APPLE</b>							
Quicksilver (Met)	72	96			x	x	Red/Silver
<b>RED, DK CHERRY (MET)</b>							
Quicksilver (Met)	94	96			x	x	Red/Silver (Met)

**S/T PICKUP**  
**INTERIOR AND EXTERIOR COLOR AVAILABILITY CHART**  
**WITH ZY7 PAINT (Avail YC3 Only)**

PLEASE NOTE: Below are the interior trim color and exterior paint combinations recommended by Chevrolet. They are the only interior and exterior color combinations available.

TRIM LEVEL		Decor	INTERIOR COLORS			
Seat Type			Beige	Blue	Graphite	Gray
LS	Deluxe Cloth Reclining Split Bench Seat Deluxe Cloth Reclining High Back Bucket Seat	YC3	LUU3	LDD3	LGG3	LOQ3
			LUU6	LDD6	LGG6	LOQ6

EXTERIOR COLORS	Color Code 1	Color Code 2	RECOMMENDED INTERIOR TRIM COLORS				D96 Striping
<b>BLACK, MIDNIGHT</b>							
Quicksilver (Met)	19	96			x	x	Silver (Met)
<b>BLUE, BRILLIANT (MET)</b>							
Quicksilver (Met)	22	96		x	x	x	Silver (Met)
<b>GREEN, TEAL (MET)</b>							
Quicksilver (Met)	38	96			x	x	Silver (Met)
<b>PURPLE (MET)</b>							
Quicksilver (Met)	21	96			x	x	Silver (Met)
<b>QUICKSILVER (MET)</b>							
Black, Midnight	96	19			x	x	Black
<b>RASPBERRY (MET)</b>							
Black, Midnight	85	19			x		Silver (Met)
Black, Midnight	85	19				x	Black
Quicksilver (Met)	85	96			x	x	Silver (Met)
<b>RED, APPLE</b>							
Black, Midnight	72	19	x		x	x	Black
Quicksilver (Met)	72	96			x	x	Silver (Met)
<b>RED, DK CHERRY (MET)</b>							
Black, Midnight	94	19			x	x	Black
Quicksilver (Met)	94	96			x	x	Silver (Met)

# S-10 PICKUP INTRODUCTION

## S-10 PICKUP

The 1994 Chevrolet S-10 Pickup is all new this year and is available in both regular and extended-cab versions, in two- or four-wheel drive configurations. The S-10 Pickup is available in two trim levels: the "Standard" trim and the luxury-level "LS" trim.

Some of the major changes for the S-10 Pickup are:

- A totally new, designed body adds more style and flair to this market segment
- A new standard 2.2L (LN2) engine replaces the 2.5L (L38)
- 4.3L V6 Engine Enhancements
- A new Wide Stance Sport Performance package (ZR2) for the T10603 model provides a unique frame for a 100 mm wider track than the standard model. This package includes extra wide wheelhouse flares on front and rear, as well as unique front fender outer and pickup box outer panels
- A new SS Sport package (B4U) for the S10603 model provides for a super sport truck image for the small truck market. This package includes equipment such as aluminum wheels, body-colored grille and unique SS badging
- New Chassis packages (ZQ8) Sport Suspension, (Z83) Solid Smooth Ride, (Z85) High Payload, (ZM6) Off-Road and (ZR2) Wide Stance Sport replaces individual componentry ordering
- New Exterior and Interior Colors
- R134a Refrigerant replaces the current R12 for an environmentally safe air conditioner
- Optional Deep-Tinted Solar-Ray<sup>®</sup> Glass
- Standard Solar-Ray<sup>®</sup> Tinted Glass
- Optional Driver's Convenience Package with Tilt-Wheel<sup>™</sup> and Cruise Control
- Optional 60/40 Split Bench Seat
- Optional Leather-Wrapped Steering Wheel
- Four-Wheel Anti-Lock Brake System used with 4.3L V6 Engines
- Underhood/Underbody Corrosion Enhancements
- Center High-Mounted Stop Lamp to comply with FMVSS 108
- Standardized color-coded labeling of underhood customer service locations
- Aerodynamic exterior rearview mirrors
- More shoulder, hip and headroom than 1993 S-10
- Analog Instrumentation
- Larger Glove Box
- Reduced interior noise
- Redesigned chassis packages
- Improved Spare Tire Carrier
- Side Door Guard Beams to comply with FMVSS 214
- Pickup box with two-tier loading and cargo tie-down loops
- Scotchgard<sup>®</sup> protection for carpet and cloth interior
- Improved Cable-Operated Floor-Mounted Transfer Case Shifter
- Alternator Improvements

# S-10 PICKUP

## MODEL SELECTION SUMMARY

Use the chart below to choose the model that fits your customer's needs. Note that the Maximum Payload is based on curb weight. Also, the Maximum Gross Trailer Weight is based on vehicles that are properly equipped. See your 1994 Chevrolet Truck Order Guide for specific details.

SERIES	MODEL NUMBER/ BODY CODE/ OPTION CODE	PASSENGER CAPACITY (STD./OPT.)	STANDARD ENGINE/ TRANS.	OPTIONAL ENGINE/ TRANS.	GVWR (LBS.)	GAWR (LBS.) FRONT/ REAR	MAXIMUM PAYLOAD (LBS.) BASED ON CURB WT.	MAX. GROSS TRAILER WT./ TONGUE LOAD (LBS.) PROPERLY EQUIPPED
<b>TWO-WHEEL DRIVE MODELS</b>								
<b>S-10 4x2 REGULAR CAB PICKUPS</b>								
S-10 SHORT BOX	CS 10603/E63 Z83/QCE/QCF	3/2	2.2L L4/M5	2.2L L4/A4 4.3L V6/M5/A4 4.3L V6/A4 <sup>1</sup>	4200	2500/2300	1378	2000/200 6000/750 6000/750
S-10 SHORT BOX W/OPT. CHASSIS PACKAGE	CS 10603/E63 Z85/QCE/QCF or ZQ8/QPP	3/2	2.2L L4/M5	2.2L L4/A4 4.3L V6/M5/A4 4.3L V6/A4 <sup>1</sup>	4600	2500/2700	1703	2000/200 6000/750 6000/750
S-10 LONG BOX	CS 10803/E63 Z85/QCE/QCF or ZQ8/QPP	3/2	2.2L L4/M5	2.2L L4/A4	4600	2500/2700	1624	2000/200
S-10 LONG BOX W/OPT. CHASSIS PACKAGE	CS 10803/E63 Z85/QCE/QCF or ZQ8/QPP	3/2	4.3L V6/M5	4.3L V6/A4 4.3L V6/A4 <sup>1</sup>	4900	2500/2700	1743	6000/750 6000/750
<b>S-10 4x2 EXTENDED CAB PICKUPS</b>								
S-10 EXTENDED CAB SHORT BOX	CS 10653/E63 Z85/QCE/QCF	5/4	2.2L L4/M5	2.2L L4/A4 4.3L V6/M5/A4 4.3L V6/A4 <sup>1</sup>	4600	2500/2700	1519	2000/200 6000/750 6000/750
<b>FOUR-WHEEL DRIVE MODELS</b>								
<b>S-10 4x4 REGULAR CAB PICKUPS</b>								
S-10 SHORT BOX	CT 10603/E63 Z83/QCE/QCF/QJL or ZR2/QJJ	3/2	4.3L V6/M5	4.3L V6/A4 4.3L V6/M5 <sup>2</sup> /A4 <sup>1</sup>	4650	2700/2300	1294	5000/600 <sup>3</sup> 5000/600 <sup>3</sup>
S-10 SHORT BOX W/OPT. CHASSIS PACKAGE	CT 10603/E63 Z85/ZM6/QEB or Z85/QFL	3/2	4.3L V6/M5	4.3L V6/A4 4.3L V6/A4 <sup>1</sup>	5150	2700/2700	1701	5500/700 5500/700
S-10 LONG BOX	CT 10803/E63 Z83/QCE/QCF/QJL	3/2	4.3L V6/M5	4.3L V6/A4 4.3L V6/A4 <sup>1</sup>	4650	2700/2300	1213	5000/600 5000/600
S-10 LONG BOX W/OPT. CHASSIS PACKAGE	CT 10803/E63 Z85/ZM6/QEB or Z85/QFL	3/2	4.3L V6/M5	4.3L V6/A4 4.3L V6/A4 <sup>1</sup>	5150	2700/2700	1596	5500/700 5500/700
<b>S-10 4x4 EXTENDED CAB PICKUPS</b>								
S-10 EXTENDED CAB SHORT BOX	CT 10653/E63 Z85/QFL/QEB	5/4	4.3L V6/M5	4.3L V6/A4 4.3L V6/A4 <sup>1</sup>	5150	2700/2700	1482	5500/700 5500/700
S-10 EXTENDED CAB SHORT BOX W/OPT. CHASSIS PACKAGE	CT 10653/E63/ ZM6/QEB	5/4	4.3L V6/M5	4.3L V6/A4 4.3L V6/A4 <sup>1</sup>	5150	2700/2700	1470	5500/700 5500/700

<sup>1</sup> 4.3L V6 CPI (L35)

<sup>2</sup> 5-speed manual transmission available on ZR2/QJJ combination only.

<sup>3</sup> Maximum Gross Trailer Weight increases to 5500/700 lbs. with ZR2 package.

# S-10 PICKUP

## POWERTRAINS

Chevrolet offers a variety of engines, transmissions and axle ratios for the S-10 Pickup. The following charts detail basic engine, transmission and axle specifications. See your 1994 Chevrolet Truck Order Guide for specific details.

ENGINES			
	2.2L L4	4.3L V6	4.3L V6
Engine Order Code	LN2	LB4	L35
Availability	S-10 4x2 only	All models	All models
SAE Net Horsepower @ rpm	118 @ 5200	165 @ 4000	195 @ 4500
SAE Net Torque lbs-ft @ rpm	130 @ 2800	235 @ 2400	260 @ 3600
Fuel System	MFI	TBI	CPI
Clutch Size (in.)	9.13	11.02	11.02
Standard Battery Cold Cranking Amps @ 0° F	525	525	525
Standard Alternator Max. Cap. (Amps)	100	100	100

TRANSMISSIONS			
	MANUAL		AUTOMATIC
	MANUAL 5-SPEED W/OVERDRIVE (MW1)	MANUAL 5-SPEED W/OVERDRIVE (NVG3500) (MY2)	ELECTRONIC AUTOMATIC 4-SPEED OVERDRIVE W/TORQUE CONVERTER CLUTCH (4L60-E) (M30)
Transmission Order Code	MM5	MM5	MX0
Engine Application (Order Code)	2.2L L4 (LN2)	4.3L V6 (LB4/L35)	2.2L L4/4.3L V6 (LN2/LB4/L35)
Synchronized Speeds	1/2/3/4/5	1/2/3/4/5	—
Gear Ratios			
First	4.03	4.01	3.06
Second	2.37	2.32	1.63
Third	1.49	1.40	1.00
Fourth	1.00	1.00	0.70
Fifth	0.86	0.83	—
Reverse	3.76	3.74	2.29
Shaft Center Distance (mm)	77	85	—

AXLES								
	REAR AXLE					FRONT AXLE (4X4 ONLY)		
Make	GM					GM		
Capacity (lbs.)	2900					2700		
Pinion and Ring Gear Type	Hypoid					Hypoid		
Engine Availability	4.3L V6	4.3L V6	4.3L V6	2.2L L4/4.3L V6	2.2L L4	4.3L V6		
Axle Ratio Code	GU2	GU4	GU6	GT4	GT5	GU4	GU6	GT4
Ratio	2.73	3.08	3.42	3.73	4.10	3.08	3.42	3.73
Pinion Teeth	15	13	12	11	10	13	12	11
Ring Gear Teeth	41	40	41	41	41	40	41	41
Ring Gear Diameter (in.)	7.62	7.62	7.62	7.62 <sup>1</sup>	7.62	7.25	7.25	7.25

Note: Axle Ratio availability depends on model, powertrain and emissions selected. See your 1994 Chevrolet Truck Order Guide for details.  
<sup>1</sup>ZR2 Wide Stance uses 8.5 in. ring gear diameter.

# S-10 PICKUP

## TRIM LEVELS

Chevrolet offers S-10 Pickup Regular Cab in two trim levels: "Standard" and "LS." The "LS" trim level is standard on Extended Cab models. The following chart details major standard features. See your 1994 Chevrolet Truck Order Guide for specific details.

CHASSIS EQUIPMENT			
KEY: ■ = STANDARD, — = NOT INCLUDED		STANDARD (BASE) REG. CAB ONLY	LS (YC3)
BRAKES	Vacuum Power: front disc, rear drum. Includes rear-wheel anti-lock system on four cylinder engine models and four-wheel anti-lock system on six cylinder engine models.	■	■
FRAME	All-welded ladder-type, channel design and boxed front-end section.	■	■
FUEL TANK	20 gallon (approx.) capacity.	■	■
REAR AXLE	Hypoid, semi-floating.	■	■
SHOCK ABSORBERS	Front: 32 mm; Rear: 32 mm. 46mm Front and Rear with ZM6 and ZR2 Chassis Package.	■	■
STABILIZER BAR	Front: 25 mm with Z83 and ZM6 Chassis Package. Front: 28 mm with Z85 (4WD) and ZR2 Chassis Package. Front: 29 mm with Z85 (2WD) and ZQ8 Chassis Package.	■	■
STEERING	Integral Power.	■	■
SUSPENSION, FRONT	4x2: Independent with computer-selected coil springs. 4x4: Independent with computer-selected torsion bars.	■	■
SUSPENSION, REAR	Two-stage semi-elliptic multi-leaf springs.	■	■
TOW HOOKS	Two front-mounted on 4x4 only.	■	■

EXTERIOR EQUIPMENT			
AIR DAM	Matches bumper color.	■	■
BUMPERS, FRONT AND REAR-STEP	Dark gray with dark gray end caps. Color-keyed with color-keyed end caps on 2WD models. Dark gray with dark gray end caps on 4WD models. ZY7 Paint - body color on two and four-wheel drive.	■	—
GLASS	Tinted Solar-Ray <sup>+</sup> .	■	■
GRILLE	Dark gray. Chrome and Spectra Gray.	■	—
HEADLAMPS	Single rectangular halogen.	■	■
HORN	Dual note.	■	■
INSULATION	Under-hood.	■	■
LAMPS	Engine compartment with center high-mounted stop lamp.	■	■
MIRRORS	Black RH and LH fixed with adjustable heads. Head size 4.0" x 5.7". Black RH and LH below-eye-line-type. Head size 5.5" x 7.5".	■	—
MOLDING	Black windshield.	■	■
PICKUP BOX	Two-tier loading with cargo tie-down loops in each corner.	■	■
SPARE TIRE AND WHEEL	Full-size spare tire and wheel mounted under bed.	■	■
SPARE TIRE CARRIER	Winch-type carrier mounted under frame at rear.	■	■
TIRES	P205/75R15 BW all-season steel-belted radials.	■	■
WHEELS	4x2: 15.0" x 7.0" steel painted argent with brushed aluminum center cap. 4x4: 15.0" x 7.0" steel painted argent with black center cap. 4x2: 15.0" x 7.0" steel painted argent with black center cap and trim rings. 4x4: 15.0" x 7.0" steel painted argent with black center cap and trim rings.	■	—
WINDSHIELD WIPERS	Adjustable intermittent with dual fluidic nozzles.	■	■

INTERIOR EQUIPMENT			
ARMRESTS	RH and LH padded integral with door panels.	■	■
CAB BACK PANELS	Carpeted.	■	■
CIGARETTE LIGHTER	Located on instrument panel. Includes ashtray light. Located on instrument panel. Includes ashtray light and two auxiliary power outlets.	■	—
COAT HOOKS	RH and LH on Regular Cab models. Foldaway on Extended Cab models.	■	■
DOME LAMP	Door-operated with front floor courtesy lamp.	■	■
DOOR SILL PLATE	Black.	■	■
DOOR PANELS	One-piece molded plastic with integral armrests and map pockets. Molded plastic with soft cloth upper insert, integral armrests and map pockets.	■	—
FLOOR COVERING	Embossed dark gray vinyl mat. Color-keyed full floor carpeting with Scotchgard <sup>+</sup> .	■	—
GAGES	Including voltmeter, oil pressure and engine temperature gages, fuel gage, trip odometer and speedometer, warning lights for seat belts, parking brake, direction/hazard signals and high beam.	■	■
GLOVE BOX	Non-locking with door activated light and cup holders.	■	■
GRAB HANDLES	Passenger side.	■	■
HEADLAMP WARNING BUZZER	Headlamps on.	■	■



# S-10 PICKUP

INTERIOR EQUIPMENT (CONT.)		STANDARD (BASE) REG. CAB ONLY	LS (YC3)
<b>KEY:</b> ■ = STANDARD, — = NOT INCLUDED			
<b>HEATER</b>	Deluxe with side window defoggers.	■	■
<b>HEADLINER</b>	Full coverage, foam backed with color-keyed cloth cover.	■	■
<b>INSULATION</b>	Provided on dash panel, doors, cab back, hood and front floor. Additional insulation on instrument panel and cowl-to-fender seals.	■	■
<b>MIRRORS</b>	10-inch rearview, 10-inch rearview mirror with dual reading lamps and illuminated entry feature.	■	■
<b>RADIO</b>	ETR AM with two 4.0" x 6.0" front dash speakers and digital clock. ETR AM/FM stereo with two 4.0" x 6.0" front dash speakers and two door speakers. (four speakers on Ext. Cab)	■	■
<b>SEATS</b>	3-passenger front bench with choice of Custom Vinyl or Custom Cloth with folding backrest and head restraints. Scotchgard <sup>®</sup> on all cloth seats. 60/40 Deluxe Cloth split bench with reciners. Includes armrests and dual cup holders. Extended-Cab models include passenger side easy entry feature and rear vinyl folding jump seats.	■	■
<b>STEERING WHEEL</b>	Deluxe two-spoke, black.	■	■
<b>STORAGE BOX</b>	Instrument panel under radio.	■	■
<b>SUNSHADES</b>	RH and LH padded, color-keyed cloth with map strap and RH vanity mirror. RH and LH padded, color-keyed cloth includes slider extensions and RH and LH illuminated vanity mirrors.	■	■
<b>TOOLS</b>	Mechanical jack and wheel wrench located in storage compartment on floor behind front seat. Cover includes drink holders on Ext. Cabs.	■	■
<b>WINDOWS</b>	Extended Cab: Swing-out rear quarter windows.	■	■

## PREFERRED EQUIPMENT GROUPS

Preferred Equipment Groups (PEGs) are convenient option packages that can save your customers money. They would pay appreciably more by buying all the options in a Preferred Equipment Group as individual options. (Savings based on a comparison of Manufacturer's Suggested Retail Price of option packages versus MSRP of individual options purchased separately). See your 1994 Chevrolet Truck Order Guide and Vehicle Price Schedule for specific information and prices.

## OPTIONS

These options can be ordered individually in addition to the Preferred Equipment Groups if not already included. See your 1994 Chevrolet Truck Order Guide for specific availability and restrictions. The Option Code is listed in **bold**.

Air Conditioning .....	<b>C60</b>	<b>Engines:</b>		Scan/Stereo Cassette w/Search/Repeat, Graphic Equalizer/Digital Clock and four speakers .....	<b>UX1</b>
Air Dam w/Fog Lamps (4x2 only) .....	<b>ANL</b>	2.2L MFI L4 .....	<b>LN2</b>	ETR AM Stereo/FM Stereo Radio w/Digital Clock, Seek-Scan, Compact Disc Player and four speakers .....	<b>U1C</b>
Axle, Rear Locking Differential .....	<b>G80</b>	4.3L TBI V6 .....	<b>LB4</b>	Shield Package (4x4 only, includes transfer case and front differential skid plates, fuel tank and steering linkage shields) .....	<b>ZM5</b>
Battery, Heavy Duty (690 CCA) .....	<b>UA1</b>	4.3L CPI V6 .....	<b>L35</b>	SS Sport Package, (CS10603 only) (Reqs L35 Engine and MX0 Trans) (see Order Guide for detailed description) .....	<b>B4U</b>
Bumper Rear Step .....	<b>VF6</b>	<b>Exterior Appearance Package, (includes front and rear color-keyed bumpers with color-keyed end caps, dark gray rub strips and bright inserts. Also includes dark gray body-side moldings with bright insert and bright wheel opening moldings and "CHEVROLET" tailgate applique) .....</b>	<b>YC5</b>	Steering Wheel, Leather Wrapped .....	<b>NP5</b>
Bumper Delete, Rear Step .....	<b>VF7</b>	Floor Covering, Carpet (incl with YC3) .....	<b>B30</b>	Stripe, Sport, (Reqs Base Decor only) .....	<b>D88</b>
<b>Chassis Package,</b>		Floor Covering, vinyl, charcoal (replaces carpeting, Reqs. YC3) .....	<b>BG9</b>	Upper Body Side, (Reqs YC3 Decor) .....	<b>D96</b>
WIDE STANCE, Sport Performance (CT10603 only) (Reqs. 4650 GVWR, YC3 and ZM5) ..	<b>ZR2</b>	Floor Mats, front .....	<b>B32</b>	Tachometer, (incl. with L35 Engine) .....	<b>U16</b>
INCREASED CAPACITY, (Reqs. 4600, 4900 or 5150 GVWR) .....	<b>ZB5</b>	Harness, Wiring (five-lead w/heavy-duty flasher; N/A ZB2 Trailering) .....	<b>U89</b>	Trailering Special Equipment (Reqs LB4 or L35 Engine) (N/A with VF7) (includes seven-lead wiring harness, heavy-duty flasher, weight distributing hitch platform and V08 heavy-duty cooling w/LB4) .....	<b>ZB2</b>
OFF ROAD, (T10 only) (Reqs. 5150 GVWR) .....	<b>ZM6</b>	License Plate Bracket .....	<b>VK3</b>	Transfer Case, Electronic Shift (4x4 only), instrument panel-mounted shift selection switch .....	<b>NP1</b>
SOLID SMOOTH RIDE, (N/A CT10653) ...	<b>ZB3</b>	Mirrors, Exterior Below-Eye-Line Type, Black (included w/YC3) .....	<b>D44</b>	Transmissions:	
SPORT, (N/A Extended Cab models) (S10 only) (Reqs. YC3 and 4600 or 4900 GVWR) .....	<b>ZQ8</b>	Paint, Exterior:		5-speed manual OD .....	<b>MM5</b>
Cold Climate Package (includes Heavy-Duty battery, engine block heater) .....	<b>V10</b>	Solid .....	<b>ZY1</b>	Electronic automatic 4-speed OD .....	<b>MX0</b>
Cooling System, Heavy Duty (requires LB4 engine) .....	<b>V08</b>	Special Two-Tone .....	<b>ZY3</b>	Wheels, Aluminum Argent (4x2 only) .....	<b>N60</b>
Convenience Package, Driver's (includes Tilt-Wheel <sup>™</sup> and speed control) .....	<b>ZQ3</b>	Sport Two-Tone .....	<b>ZY7</b>	Wheels, Cast Aluminum (4x4 only) .....	<b>N90</b>
Convenience Package, Operating (includes power door locks, power windows and electric remote mirrors) .....	<b>ZQ6</b>	<b>Radio Equipment:</b>		Wheels, Special Aluminum (T10 only) .....	<b>5P2</b>
<b>Emissions Systems:</b>		Radio Delete .....	<b>UL5</b>	Window, Sliding Rear .....	<b>A28</b>
California .....	<b>YF5</b>	ETR AM/FM Stereo Radio w/Seek-Scan, Stereo Cassette/Digital Clock and four speakers .....	<b>UM6</b>		
Federal .....	<b>FE9</b>	AM Radio with clock .....	<b>UT5</b>		
New York State .....	<b>NG1</b>	ETR AM/FM Stereo Radio w/Seek-Scan/Digital Clock and four speakers .....	<b>UM7</b>		
Federal Emissions Override .....	<b>NC7</b>	ETR AM Stereo/FM Stereo Radio w/Seek-			
Cal./N.Y. Emissions Override .....	<b>NB8</b>				

# S-10 PICKUP

## TIRES

KEY: ALS = ALL-SEASON SBR = STEEL-BELTED RADIAL PLY BW = BLACKWALL WW = WHITEWALL WL = WHITE LETTERED  
HWY = HIGHWAY BL = BLACK LETTERED OOR = ON-OFF ROAD WOL = WHITE OUTLINE LETTERED

TIRE DESCRIPTION		ORDERING CODE
P215/65R15 WL (4X2)	ALS/SBR	QPP
P205/75R15 BW	ALS/SBR	QCE
P205/75R15 WL	ALS/SBR	QCF
P205/75R15 WOL (4X4)	OOR/SBR	QJL
P235/75R15 BW (4X4)	ALS/SBR	QFL
P235/75R15 WOL (4X4)	OOR/SBR	QEB
31 X 10.5R-15LTC BW	OOR/SBR	QJJ

## DIMENSIONS

MODEL	S-10 (REGULAR CAB)	S-10 (REGULAR CAB)	S-10 (EXTENDED CAB)	S-10 (REGULAR CAB)	S-10 (REGULAR CAB)	S-10 (EXTENDED CAB)
MODEL NUMBER	CS10603/E63	CS10803/E63	CS10653/E63	CT10603/E63	CT10803/E63	CT10653/E63

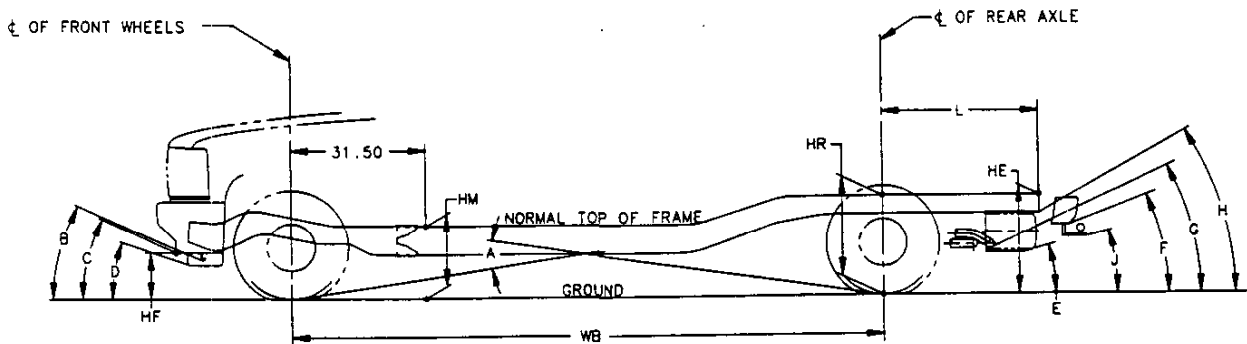
### EXTERIOR DIMENSIONS

<b>BODY</b>						
Wheelbase (in.)	108.3	117.9	122.9	108.3	117.9	122.9
Overall Length (in.)	188.7	204.6	203.3	188.7	204.6	203.3
Overall Height (in.)	63.0	63.7	61.9	64.5	64.6	64.6
Maximum Width (in.)	67.9	67.9	67.9	67.9	67.9	67.9
Bumper to Axle (in.)						
Front	34.5	34.5	34.5	34.5	34.5	34.5
Rear	45.9	52.2	45.9	45.9	52.2	45.9
Cab Axle (in.)	37.4	47.1	37.4	37.4	47.1	37.4
Cab to End of Frame (in.)	73.1	89.0	73.1	73.1	89.0	73.1
Bumper to Back of Cab (in.)	105.3	105.3	120.0	105.3	105.3	120.0
Ground to Top of Rear Load Floor (in.)	26.7	27.4	29.0	28.2	28.2	28.7
Ground Clearance (in.)						
Front	9.2	9.2	9.2	8.5	8.5	8.5
Rear	7.2	7.2	7.2	7.5	7.5	7.5
Turning Diameter Curb-to-Curb (ft.)	36.9	39.8	41.3	37.3	40.2	42.6
<b>CARGO BOX</b>						
Length (in.) at Floor	72.8	88.8	72.8	72.8	88.8	72.8
Inside Width at Top Rear (in.)	54.6	54.6	54.6	54.6	54.6	54.6
Inside Width at Floor (in.)	56.6	56.6	56.6	56.6	56.6	56.6
Inside Width between Wheelhousings (in.)	40.4	40.4	40.4	40.4	40.4	40.4
Inside Height (in.)	16.8	16.8	16.8	16.8	16.8	16.8
Tailgate Width (in.)	54.6	54.6	54.6	54.6	54.6	54.6
Cargo Volume (cu. ft.)	39.4	48.1	39.4	39.4	48.1	39.4
<b>SIGN PANEL AREA (in.)</b>	16.25 x 46	16.25 x 46	16.25 x 64.0	16.25 x 46	16.25 x 46	16.25 x 64.0

### INTERIOR DIMENSIONS

<b>CAB</b>						
Headroom (in.)	39.6	39.6	39.6	39.6	39.6	39.6
Legroom (in.)	42.4 <sup>1</sup>	42.4 <sup>1</sup>	42.4 <sup>1</sup>	42.4 <sup>1</sup>	42.4 <sup>1</sup>	42.4 <sup>1</sup>
Shoulder Room (in.)	57.2	57.2	57.2	57.2	57.2	57.2
Hip Room (in.)	52.0	52.0	52.0	52.0	52.0	52.0
Cargo Volume (cu. ft.) (in-cab storage area w/ and w/o jumpseat)	—	—	13.7/18.4	—	—	13.7/18.4

<sup>1</sup> 43.2 inches with seat in rearmost position.



**FRAME HEIGHTS AND LENGTHS**

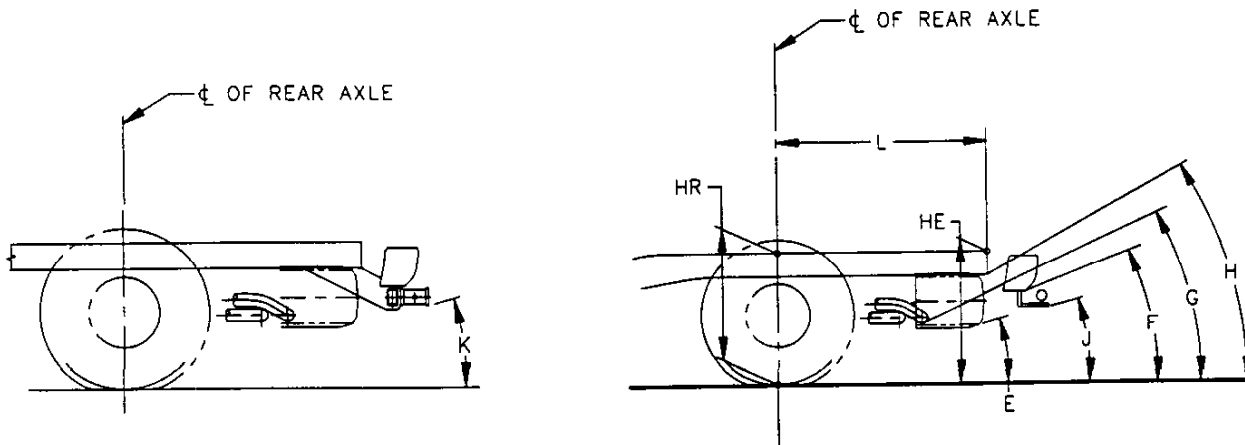
- L ..... Centerline of axle to end of frame
- HF ..... Bottom of bumper to ground
- HM ..... Inside top of frame to ground
- HR ..... Top of frame to ground at centerline of rear axle
- HE ..... Top of frame to ground

**ANGLE(S)**

- A ..... Ramp breakover

**ANGLE(S) (APPROACH)**

- B ..... Tow hooks
- C ..... Front bumper
- D ..... Spoiler



**ANGLE(S) (DEPARTURE)**

- E ..... Spare tire
- F ..... Rear bumper
- G ..... Exhaust
- H ..... Chassis
- J ..... Hitch
- K ..... Platform hitch

*Note: All weights are in pounds and all dimensions are in inches.*

S 10006 Models

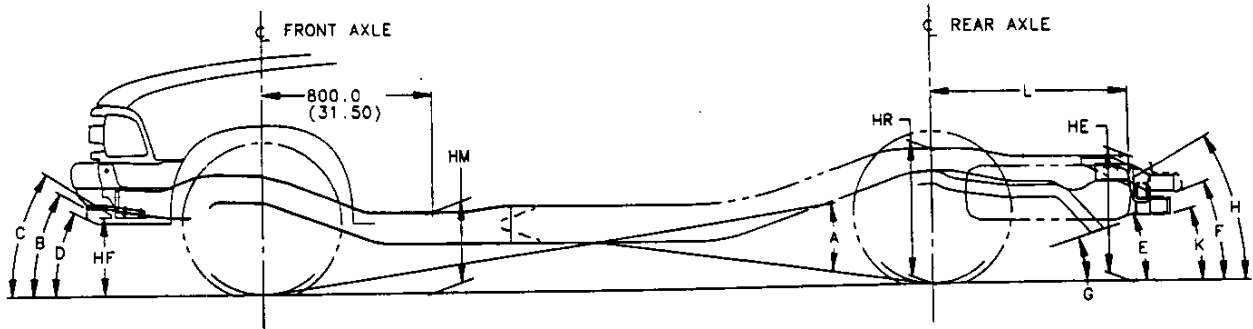
S10506		107.0" Wheelbase				Frame Heights at Base Model Curb Weight				Frame Heights and Angular Dimensions are shown at Maximum GAWR Front and Rear													
GVW/Tire	Base Model Curb Weight			GAWR		HF	HM	HR	HE	HF	HM	HR	HE	A	B	C	D	E	F	G	H	J	K
	Frnt	Rr	Ttl	Frnt	Rr																		
4850 P205/75R15	1927	1656	3583	2300	2900	16.8	15.3	24.3		15.9	13.6	21.6		16		33	22		25	28	26	16	15

S10516		100.5" Wheelbase				Frame Heights at Base Model Curb Weight				Frame Heights and Angular Dimensions are shown at Maximum GAWR Front and Rear													
GVW/Tire	Base Model Curb Weight			GAWR		HF	HM	HR	HE	HF	HM	HR	HE	A	B	C	D	E	F	G	H	J	K
	Frnt	Rr	Ttl	Frnt	Rr																		
4350 P205/75R15	1781	1660	3441	2200	2600	18.8	16.4	24.2		17.7	14.9	22.2		19		36	26		25	29	26	16	15

T 10006 Models

T10506		107.0" Wheelbase				Frame Heights at Base Model Curb Weight				Frame Heights and Angular Dimensions are shown at Maximum GAWR Front and Rear													
GVW/Tire	Base Model Curb Weight			GAWR		HF	HM	HR	HE	HF	HM	HR	HE	A	B	C	D	E	F	G	H	J	K
	Frnt	Rr	Ttl	Frnt	Rr																		
5100 P205/75R15	2212	1773	3985	2500	2900	18.0	15.9	24.1	22.4	17.0	14.4	22.0	20.0	16	27	34	25		24	27	25	15	14

T10516		100.5" Wheelbase				Frame Heights at Base Model Curb Weight				Frame Heights and Angular Dimensions are shown at Maximum GAWR Front and Rear													
GVW/Tire	Base Model Curb Weight			GAWR		HF	HM	HR	HE	HF	HM	HR	HE	A	B	C	D	E	F	G	H	J	K
	Frnt	Rr	Ttl	Frnt	Rr																		
4700 P205/75R15	2051	1730	3781	2400	2700	18.0	15.9	24.1	22.4	17.0	14.4	22.0	20.0	19	28	35	26		25	29	26	16	15



**FRAME HEIGHTS AND LENGTHS**

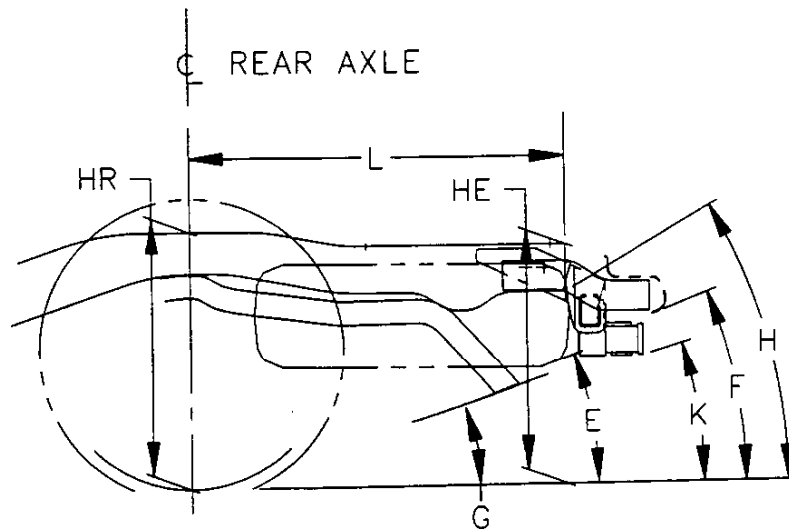
- L ..... Centerline of axle to end of frame
- HF ..... Bottom of bumper to ground
- HM ..... Normal top of frame to ground
- HR ..... Top of frame to ground at centerline of rear axle
- HE ..... Top of frame to ground

**ANGLE(S)**

- A ..... Ramp breakover

**ANGLE(S) (APPROACH)**

- B ..... Tow hooks
- C ..... Front bumper
- D ..... Spoiler



**ANGLE(S) (DEPARTURE)**

- E ..... Spare tire
- F ..... Rear bumper
- G ..... Exhaust
- H ..... Chassis
- K ..... Platform hitch

*Note: All weights are in pounds and all dimensions are in inches.*

S 10003 Models

S10603		108.0" Wheelbase					Frame Heights at Base Model Curb Weight				Frame Heights and Angular Dimensions are shown at Maximum GAWR Front and Rear												
GVW/Tire	L	Base Model Curb Weight			GAWR		HF	HM	HR	HE	HF	HM	HR	HE	A	B	C	D	E	F	G	H	K
		Frnt	Rr	Ttl	Frnt	Rr																	
4200 P205/75R15	35.6	1625	1281	2906	2500	2300	20.6	16.0	26.4	25.0	17.9	12.5	22.0	20.0	17		30	23	18	15	14	25	13
4600 P205/75R15	35.6	1675	1321	2996	2500	2700	20.2	16.1	27.2	26.0	17.9	12.6	22.0	20.2	17		30	23	18	15	16	25	13
4600 P215/65R15	35.6	1675	1321	2996	2500	2700	19.7	15.6	26.7	25.5	16.9	12.6	23.4	22.1	18		28	21	21	18	19	28	16

S10803		118.0" Wheelbase					Frame Heights at Base Model Curb Weight				Frame Heights and Angular Dimensions are shown at Maximum GAWR Front and Rear												
GVW/Tire	L	Base Model Curb Weight			GAWR		HF	HM	HR	HE	HF	HM	HR	HE	A	B	C	D	E	F	G	H	K
		Frnt	Rr	Ttl	Frnt	Rr																	
4200 P205/75R15	41.9	1673	1302	2975	2500	2300	20.3	15.9	26.3	24.9	17.9	12.6	22.0	20.0	15		30	23	15	13	16	21	11
4600 P205/75R15	41.9	1728	1350	3078	2500	2700	19.9	15.9	27.0	25.9	17.4	13.0	23.9	22.6	17		29	22	18	16	20	25	14
4600 P215/65R15	41.9	1728	1350	3078	2500	2700	19.5	15.5	26.6	25.4	16.9	12.6	23.4	22.1	16		28	21	18	16	19	24	13
4900 P205/75R15	41.9	1900	1361	3261	2500	2700	16.9	14.2	27.0	26.6	15.4	11.5	22.9	21.7	14		26	18	17	16	18	24	13
4900 P215/65R15	41.9	1900	1361	3261	2500	2700	16.5	13.7	26.5	26.1	15.0	11.1	22.4	21.3	13		25	17	17	15	17	23	13

S10653		123.0" Wheelbase					Frame Heights at Base Model Curb Weight				Frame Heights and Angular Dimensions are shown at Maximum GAWR Front and Rear												
GVW/Tire	L	Base Model Curb Weight			GAWR		HF	HM	HR	HE	HF	HM	HR	HE	A	B	C	D	E	F	G	H	K
		Frnt	Rr	Ttl	Frnt	Rr																	
4600 P205/75R15	35.6	1944	1395	3339	2500	2700	16.8	14.1	27.0	26.5	15.5	11.6	22.9	21.8	14		26	18	21	18	18	28	15

## T 1003 Models

T10603		108.0" Wheelbase					Frame Heights at Base Model Curb Weight				Frame Heights and Angular Dimensions are shown at Maximum GAWR Front and Rear												
GVW/Tire	L	Base Model Curb Weight			GAWR		HF	HM	HR	HE	HF	HM	HR	HE	A	B	C	D	E	F	G	H	K
		Frt	Rr	Ttl	Frt	Rr																	
4650 P205/75R15	35.6	2116	1343	3459	2700	2300	21.2	16.7	27.3	25.7	19.9	14.5	23.9	21.8	17	29	33	27	19	15	16	28	15
4650 31X10.5R15	35.6	2116	1343	3459	2700	2300	22.9	18.4	28.9	27.4	21.7	16.2	25.6	23.6	20	33	36	30	22	17	20	31	17
5150 P235/75R15	35.6	2095	1390	3485	2700	2700	22.3	17.6	27.9	26.3	21.2	15.1	23.8	21.4	18	32	35	29	19	18	16	28	14

T10803		118.0" Wheelbase					Frame Heights at Base Model Curb Weight				Frame Heights and Angular Dimensions are shown at Maximum GAWR Front and Rear												
GVW/Tire	L	Base Model Curb Weight			GAWR		HF	HM	HR	HE	HF	HM	HR	HE	A	B	C	D	E	F	G	H	K
		Frt	Rr	Ttl	Frt	Rr																	
4650 P205/75R15	41.9	2097	1370	3467	2700	2300	21.3	16.8	27.3	25.7	20.3	14.3	22.9	20.4	18	30	33	27	14	17	14	22	18
5150 P235/75R15	41.9	2173	1416	3589	2700	2700	22.0	17.4	27.7	26.1	21.1	15.2	23.8	21.3	20	32	35	29	16	18	16	23	19

T10653		123.0" Wheelbase					Frame Heights at Base Model Curb Weight				Frame Heights and Angular Dimensions are shown at Maximum GAWR Front and Rear												
GVW/Tire	L	Base Model Curb Weight			GAWR		HF	HM	HR	HE	HF	HM	HR	HE	A	B	C	D	E	F	G	H	K
		Frt	Rr	Ttl	Frt	Rr																	
4650 P205/75R15	35.6	2259	1431	3690	2500	2300	20.2	16.0	27.1	25.7	20.8	15.1	23.9	21.6	19	31	34	28	19	21	16	28	23
5150 P235/75R15	35.6	2244	1461	3705	2500	2700	21.1	16.8	27.6	26.2	21.9	15.7	23.7	21.3	20	33	36	30	18	21	15	27	23