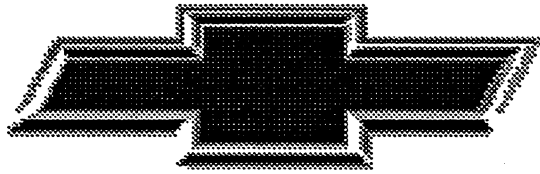


1996 BLAZER



GENUINE CHEVROLET



BLAZER

The 1996 Chevrolet Blazer is offered in both two- and four-wheel drive, 2-door and 4-door models.

Changes on the 1996 Blazer include:

- Vortec 4300 V6 (L35) Engine. Replaces 4.3L (L35) and includes sequential fuel injection
 - A new 5-Speed Manual Transmission (M50)—Interim availability
 - 4L60-E (M30) Automatic Transmission enhancements
 - On Board Diagnostics (OBD II)
 - A new starter motor
 - New standard steel wheels
 - Aluminized Stainless Steel Exhaust System
 - New Bright Aluminum Wheels (PA3)
 - Brake/Transmission Shift Interlock with automatic transmission
 - A new tethered fuel cap on all models
 - Daytime Running Lamps, standard
 - New DEX-COOL™ Extended-Life Engine Coolant. This coolant extends the coolant change interval to 5 years/100,000 miles and is colored fluorescent orange
 - One new interior color
 - Five new exterior colors
-

BLAZER

MODEL SELECTION SUMMARY

Use the chart below to choose the model that fits your customer's needs. Please note that the Base Payloads shown reflect the maximum allowable weight of cargo that can be carried in a standard model, including occupants. (They are calculated by subtracting curb weight from GVWR.) To calculate payloads for models with optional equipment, please refer to the WEIGHTS section in the back of this book or consult your 1996 GM PROSPEC. Also, the Maximum Trailer Weights shown below are based on vehicles that are properly equipped. See your Chevrolet Truck Order Guide for specific details.

SERIES	MODEL NUMBER/ BODY CODE/ OPTION CODE	PASSENGER CAPACITY (STD./OPT.)	STANDARD ENGINE/ TRANS.	OPTIONAL ENGINE/ TRANS.	GVWR (LB)	GAWR (LB) FRONT/ REAR	BASE PAYLOAD (LB)	MAXIMUM TRAILER WT./ TONGUE LOAD (LB) PROPERLY EQUIPPED
TWO-WHEEL-DRIVE MODELS								
2-DOOR BLAZER	CS10516/ E55/Z83/QCA/QCE or Z85/QBF/QBG	2/4	4300 V6/M5	4300 V6/A4	4450	2200/2600	914	5500/650
4-DOOR BLAZER	CS10506/ E55/ZQ1/QCA/QCE or Z85/QBF	2/3/5/6	4300 V6/A4	—	4850	2400/2700 (ZQ1) 2400/2800 (Z85)	1158	5500/650
4-DOOR BLAZER	CS10506/E55 ZW7/QBF/QBG	2/3/5/6	4300 V6/A4	—	4850	2400/2700	W/A	5500/650
FOUR-WHEEL-DRIVE MODELS								
2-DOOR BLAZER	CT10516/ E55/Z83/ QCE	2/4	4300 V6/M5	4300 V6/A4	4785	2500/2600	971	5000/600
2-DOOR BLAZER	CT10516/E55/ Z85/QBF/QBG/ QEB or ZM6/QEB	2/4	4300 V6/M5	4300 V6/A4	4850	2500/2700	W/A	5000/600
4-DOOR BLAZER	CT10506/ E55/ZQ1/QCE or Z85/QBF/QBG/ QEB or ZW7/QBF/ QBG	5/6	4300 V6/A4	—	5300	2700/2700 (ZQ1) 2700/2900 (Z85) 2700/2700 (ZW7)	1277	5000/600

W/A - Will Advise. Please refer to Weights in back of your Tech Guide for optional payloads.

POWERTRAINS

Chevrolet offers a variety of transmissions and axle ratios for Blazer. The following charts detail basic engine, transmission and axle specifications. See your 1996 Chevrolet Truck Order Guide for specific details.

ENGINES	
	VORTEC 4300 V6
Order Code	(L35)
Availability	All models
SAE Net Horsepower @ rpm	190 @ 4400
SAE Net Torque lb-ft @ rpm	250 @ 2800
Fuel System	SFI
Standard Battery Cold Cranking Amps @ 0° F	525
Standard Alternator Max. Cap. (Amps)	100

TRANSMISSIONS		
	MANUAL 5-SPEED W/OVERDRIVE	ELECTRONIC AUTOMATIC 4-SPEED W/OD AND TORQUE CONVERTER CLUTCH (4L60-E)
Availability	2-Door Models	All Models
Transmission Order Code	M50	M30
Synchronized Speeds	1,2,3,4,5	—
Gear Ratios		
First	3.49	3.06
Second	2.16	1.63
Third	1.40	1.00
Fourth	1.00	0.70
Fifth	0.78	—
Reverse	3.55	2.29
Shaft Center Distance (mm)	85	—

AXLES								
	REAR AXLE					FRONT AXLE		
	4x2 Models		4x4 Models			4x4 Models		
Availability	4x2 Models		4x4 Models			4x4 Models		
Make	GM		GM			GM		
Capacity (lb)	2900		2900			2600/2700		
Pinion and Ring Gear Type	Hypoid		Hypoid			Hypoid		
Engine Availability	4300 V6 (L35)		4300 V6 (L35)			4300 V6 (L35)		
Axle Ratio Code	GU4	GU6	GU4	GU6	GT4	GU4	GU6	GT4
Ratio	3.08	3.42	3.08	3.42	3.73	3.08	3.42	3.73
Pinion Teeth	13	12	13	12	11	13	12	11
Ring Gear Teeth	40	41	40	41	41	40	41	41
Ring Gear Diameter (in.)	7.62 ¹	7.62 ¹	7.62 ¹	7.62 ¹	7.62	7.25	7.25	7.25

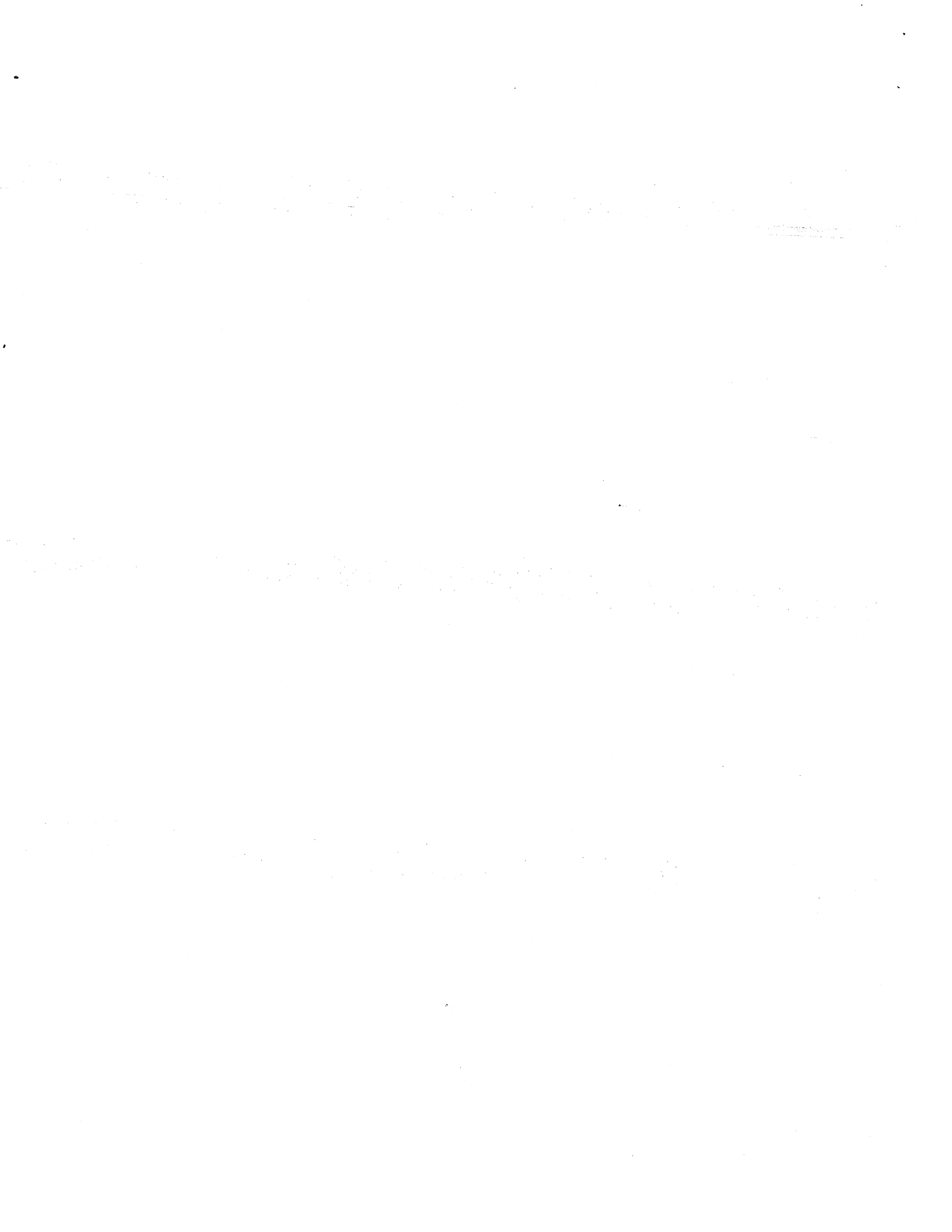
Note: Axle Ratio availability depends on model, powertrain and emissions selected. See your 1996 Chevrolet Truck Order Guide for details.
¹L35 with M50 transmission uses 8.5 inch ring gear diameter.

TRIM LEVELS

Chevrolet offers Blazer 2-Door in two trim levels: "Standard" and "LS" (YC3). The Blazer 4-Door is offered in three trim levels: "Standard," "LS" (YC5) and "LT" (YC6). The following chart details major standard features. See your 1996 Chevrolet Truck Order Guide for details.

CHASSIS EQUIPMENT		STANDARD	LS	LT
KEY: ■ = STANDARD, — = NOT INCLUDED				
BRAKES	Power Assisted: front disc, rear drum. Includes four-wheel anti-lock system. Also includes brake/transmission shift interlock with automatic transmission.	■	■	■
EXHAUST	Aluminized stainless steel exhaust system.	■	■	■
FRAME	All-welded ladder-type, channel design and boxed front-end section.	■	■	■
FUEL TANK	2-Door: 19 gallon (approx.) capacity, 4-Door: 18 gallon (approx.) capacity.	■	■	■
REAR AXLE	Hypoid semi-floating.	■	■	■
SHOCK ABSORBERS	Front/Rear: 32mm w/ZQ1/Z83 Chassis Package. Front: 46mm; Rear: 36mm deCarbon w/ZW7 and Z85 Chassis Package. Front/Rear: 46mm Bilstein w/ZM6.	■	■	■
STABILIZER BAR	Front: 33mm with all Chassis Packages. Rear: 23mm with Z83, Z85 (2WD), ZQ1, ZW7 and ZM6 26mm with Z85 (4WD)	■	■	■
STEERING	Variable integral power 16/13:1.	■	■	■
SUSPENSION, FRONT	4x2: Independent with computer-selected coil springs. 4x4: Independent with computer-selected torsion springs.	■	■	■
SUSPENSION, REAR	Semi-elliptic two-stage multileaf springs.	■	■	■
TOW HOOKS	Two front-mounted on 4x4 only.	■	■	■
TRANSFER CASE	Manual (4x4 only). Electronic shift (4x4 only).	■	■	—

EXTERIOR EQUIPMENT		STANDARD	LS	LT
AIR DAM	4x2: Matches bumper color, 4x4: Dark Gray.	■	■	■
BUMPERS	4x2: Color-keyed to lower body color, 4x4: Dark Gray w/ Dark Gray end caps. Painted body color on 4-door models with YC5 and YC6. Includes front bumper rub strip.	■	■	—



BLAZER

EXTERIOR EQUIPMENT (CONT.)

KEY: ■ = STANDARD, — = NOT INCLUDED		STANDARD	LS	LT
GRILLE	Dark gray. Deluxe front bright appearance package.	■ —	— ■	— ■
HEADLAMPS	Single rectangular halogen sealed beam. Halogen Composite (w/4-door models w/YC5 and YC6 only.)	■ —	■ ■	— ■
HORN	Dual horns, low- and high-note.	■	■	■
INSULATION	Hood insulation and cowl-to-fender seals.	■	■	■
LAMP	Engine compartment and center high-mounted stop lamp.	■	■	■
LICENSE PLATE BRACKET	Front.	■	■	■
LUGGAGE CARRIER	Black, with adjustable front cross bar.	—	■	■
MIRRORS	RH and LH below-eye-line type, black. Head size 5.5" x 7.5". RH and LH electric below-eye-line type, black. Head size 5.5"x7.5".	■ —	— ■	— ■
MOLDING	Dark Gray bodyside with bright insert and bright wheel opening lip. (Included w/4-door models w/YC5 and YC6). Black windshield surround.	— ■	■ ■	■ ■
PAINT	Solid (ZY1). Two-Tone (ZY7).	■ —	■ ■	■ ■
RUNNING LAMPS	Daytime.	■	■	■
TIRES	P205/75R15BW all-season steel-belted radials.	■	■	■
WHEELS	15.0" x 7.0" steel; argent w/black center cap and trim rings. 15.0" x 7.0" cast aluminum wheels.	■ —	— ■	— ■
WINDSHIELD WIPERS	Adjustable intermittent. With rear window wiper/washer, defogger and electric tailgate release.	■ —	■ ■	■ ■
WIRING	5-lead wiring harness for trailing purposes.	■	■	■
WINDOWS	Swingout rear quarter (2-door only).	■	■	—

INTERIOR EQUIPMENT

AIR BAG	Driver's side.	■	■	■
AIR CONDITIONING	Front.	■	■	■
CIGARETTE LIGHTER	Located on instrument panel, includes ashtray light. With two auxiliary outlets.	■ —	■ ■	■ ■
COAT HOOKS	LH and RH rear seat. Also two in cargo area on 4-door only.	■	■	■
CONSOLE, OVERHEAD	Includes reading lamps, outside temperature gage, compass and storage area.	—	—	■
CONSOLE SEAT SEPARATOR, FLOOR	Requires front bucket seats. Includes dual cupholders.	■	■	■
CONVENIENCE NET	In cargo area.	—	■	■
DOME LAMP	Door and endgate-operated dome and front floor courtesy w/delayed entry feature.	■	■	■
DOOR PANELS	Color-keyed plastic with cloth upper inserts, integral padded armrests and map pockets. Color-keyed plastic with simulated leather upper inserts, integral padded armrests and map pockets.	■ —	■ —	— ■
DOOR SILL PLATE	Black.	■	■	■
DOORS	Side door guard beams.	■	■	■
DRIVER'S CONVENIENCE GROUP	Power locks, mirrors and windows. Tilt-Wheel™ and Speed Control.	— —	■ ■	■ ■
FLOOR COVERING	Color-keyed full floor carpeting and carpeted floor mats.	■	■	■
HEADLAMP WARNING BUZZER	Headlamps on.	■	■	■
HEADLINER	Full-foam with color-keyed cloth cover. Includes grab handles over all outboard passenger seating positions.	■	■	■
HEATER	Deluxe with side window defoggers.	■	■	■
HEATING DUCT	Rear seats.	■	■	■
INSTRUMENTATION	Warning lights for seat belt, ABS/parking brake, direction/hazard signals and high-beam. Gauges include voltmeter, oil pressure, engine temperature gauge, fuel, trip odometer and speedometer.	■	■	■
INSULATION	Provided on dash panel, doors, floor, hood, instrument panel and cowl-to-fender seal.	■	■	■
KEYLESS ENTRY	Remote.	—	—	■
MIRRORS	10-inch rearview. 10-inch rearview with map lights.	■ —	— ■	■ —
RADIOS	ETR AM/FM Stereo with Seek-Scan and digital clock, includes four speakers. ETR AM/FM Stereo cassette radio with Seek-Scan, auto reverse, and digital clock. Includes four speakers. ETR AM Stereo/FM Stereo cassette radio with Seek-Scan, search/ repeat, graphic equalizer and digital clock. Includes six speakers.	■ — —	— ■ —	— — ■
SEATS	2-door: deluxe cloth buckets with manual lumbar adjust. 4-door: deluxe cloth 60/40 split bench with storage armrest and dual cupholders. (4-wheel-drive model includes split rear seat). 2-door: premium cloth buckets with manual lumbar adjustment. Includes premium cloth door trim.	■ ■ —	— — ■	— — —

INTERIOR EQUIPMENT (CONT.)		STANDARD	LS	LT
KEY: ■ = STANDARD, — = NOT INCLUDED				
SEATS (CONT.)	4-door: premium cloth 60/40 split bench with storage armrest and dual cupholders. (4-wheel-drive model includes split rear seat.) Includes premium cloth door trim. 4-door: Ultrasoft leather on seating surface reclining high-back buckets with folding seat-backs and rear split-bench seat. Power lumbar, 4-way adjustable headrest and 6-way power adjustment for driver. NOTE: Scotchgard™ is standard on all cloth seats and door trim panels.	—	■	—
SHADE, CARGO	Rear Compartment (4-door-model only).	—	■	■
SPARE TIRE AND WHEEL	Full-size spare tire and steel wheel with cover located at left rear on 2-door models and underbody on 4-door models.	■	■	■
STEERING WHEEL	Four-spoke, deluxe graphite urethane. Leather wrapped.	■	—	—
STORAGE BOX	RH side of instrument panel with door-activated light. 2-door includes two boxes in rear-seat area.	■	■	■
SUNSHADE	Dual padded, color-keyed with elastic straps and RH vanity mirror. Dual padded, color-keyed with elastic straps and LH and RH illuminated vanity mirrors with extenders.	■	—	—
TOOLS	Mechanical jack and wheel wrench with cover located at left rear.	■	■	■
WINDOWS	Solar-Ray® deep tint. Light tint in rear. Solar-Ray® deep tint. Dark tint in rear.	■	—	—

PREFERRED EQUIPMENT GROUPS

Preferred Equipment Groups (PEGs) are convenient option packages that can save your customers money. They would pay appreciably more by buying all the options in a Preferred Equipment Group as individual options. (Savings based on a comparison of Manufacturer's Suggested Retail Price of option packages versus MSRP of individual options purchased separately). See your 1996 Chevrolet Truck Order Guide and Vehicle Price Schedule for specific information and prices.

OPTIONS

These options can be ordered individually in addition to the Preferred Equipment Groups if not already included. See your 1996 Chevrolet Truck Order Guide for specific availability and restrictions. The Option Code is listed in **bold type**.

Air Dam w/Fog Lamps (4x2 only)..... **ANL**
Axles, Rear
 3.08 **GU4**
 3.42 **GU6**
 3.73 **GT4**
 Locking Differential **G80**
Battery, Heavy-Duty (690 CCA, included w/V10 Cold Climate Package)..... **UA1**
Carrier, Luggage (black)..... **V54**
Carrier, Outside Spare Tire (includes exterior cover)..... **P16**
Carrier, Outside Spare Tire Carrier Not Desired..... **PNV**
Chassis, All-Wheel-Drive (requires ZW7, CT10506 only)..... **F46**
Cold Climate Package (includes Heavy-Duty Battery, and Engine Block Heater)..... **V10**
Console, Overhead (requires bucket seats)..... **DK6**
Convenience Package, Driver's: Tilt Steering and Speed Control..... **ZQ3**
Power Windows, Locks and Mirrors..... **ZQ6**
Convenience Package, Rear Window (includes Power Tailgate Release, Rear Window Defogger, Wiper and Washer System)..... **ZM8**
Emission Systems:
 Federal **FE9**
 Massachusetts/New York **NG1**
 California **YF5**

Federal Override..... **NC7**
Cal./Mass./N.Y. Override..... **NB8**
Engine:
Vortec 4300 V6 SFI..... **L35**
Keyless Entry Remote..... **AU0**
GVWR Ratings:
 4450 **C3G**
 4785 **C6B**
 4850 **C6I**
 5300 **C3H**
Paint, Exterior:
 Solid **ZY1**
 Sport Two-Tone (requires YC3) **ZY7**
Radio Equipment:
Radio Delete (available with PEG ISA only)..... **UL5**
ETR AM/FM Stereo Radio w/Seek-Scan, Stereo Cassette and Digital Clock..... **UM6**
ETR AM Stereo/FM Stereo Radio with Seek-Scan, Cassette with Search/Repeat, Graphic Equalizer and Digital Clock (includes six speakers)..... **UX1**
ETR AM/FM Stereo Radio w/ Seek-Scan, Compact Disc Player, Digital Clock and Premium Speakers (includes six speakers) ... **U1C**
Rear Compartment Shade (available on 2-door with YC3 and P16 spare tire mount)..... **RYJ**
Seats:
 Reclining High-Back Buckets **AV5**
 Leather Front Buckets **AN3**

60/40 Reclining Split-Folding Bench Seat (includes storage armrest and dual cupholders) (N/A on 2-door) ... **AM6**
Rear Split-Folding Bench..... **AM7**
Rear Not Desired..... **YG4**
Driver, 6-way power adjust..... **AG1**
Shield Package (4x4 only includes transfer case and front differential skid plates, fuel tank and steering linkage shields)..... **ZM5**
Suspension Packages:
 Smooth (4-door only) **ZQ1**
 Smooth (2-door only) **ZB3**
 Touring **ZB5**
 Off-Road (T10516 only) **ZM6**
 Premium Ride (S/T 10506 only) **ZW7**
Tachometer..... **U16**
Trailing Special Equipment, Heavy-Duty (includes seven-lead wiring harness, heavy-duty flasher, weight distribution platform hitch)..... **ZB2**
Transfer Case, Electronic Shift (4x4 only)..... **NP1**
Transmissions:
 5-speed manual w/Overdrive **M50**
 4-speed Electronically Controlled w/Overdrive (includes brake/transmission shift interlock) **M30**
Wheels:
 Painted medium gray (requires YC3) **PA3**
 Aluminum, Argent (4x2) **N60**
 Aluminum, Cast (4x4) **N90**
 Aluminum, Special (4x4) **5P2**

BLAZER

TIRES		
KEY: ALS = ALL-SEASON SBR = STEEL-BELTED RADIAL PLY BW = BLACKWALL BL = BLACK LETTERED OOR = ON-OFF ROAD WOL = WHITE OUTLINE LETTERED		
TIRE DESCRIPTION		ORDERING CODE
P205/75R15	ALS/SBR/BW	QCE
P205/75R15	ALS/SBR/WOL	QCA
P235/70R15	ALS/SBR/BL	QBF
P235/70R15	ALS/SBR/WOL	QBG
P235/75R15	OOR/SBR/WOL	QEB

DIMENSIONS

MODEL	BLAZER (2-WHEEL DRIVE)		BLAZER (4-WHEEL DRIVE)		
	MODEL NUMBER	CS10516/E55	CS10506/E55	CT10516/E55	CT10506/E55
EXTERIOR DIMENSIONS					
BODY					
Wheelbase (in.)	L101	100.5	107.0	100.5	107.0
Overall Length (in.)	L103	174.7	181.2	174.7	181.2
Overall Height (in.)	H431	66.0	65.9	66.9	67.0
Maximum Width (in.)	W103	67.8	67.8	67.8	67.8
Bumper to Axle (in.)					
Front	L104	34.5	34.5	34.5	34.5
Rear	L105	39.7	39.7	39.7	39.7
Ground to Top of Rear Load Floor (in.)	H502	28.4	29.0	28.4	29.4
Ground Clearance (in.)					
Front/Rear	H148/H153	8.5/8.1	8.5/7.6	8.3/8.0	8.3/7.5
Turning Diameter Curb-to-Curb (ft)		34.8	36.6	35.2	39.5
SIGN PANEL AREA (in.)		15 x 46.25	15 x 46.25	15 x 46.25	15 x 46.25

INTERIOR DIMENSIONS					
CAB					
Headroom (in.)					
Front/Rear	H61/H63	39.6/38.2	39.6/38.2	39.6/38.2	39.6/38.2
Legroom (in.)					
Front/Rear	L34/L51	42.5/36.3	42.5/36.3	42.5/36.3	42.5/36.3
Shoulder Room (in.)					
Front/Rear	W3/W4	57.7/57.2	57.2/57.2	57.7/57.2	57.2/57.2
Hip Room (in.)					
Front/Rear	W5/W6	52.0/39.8	52.0/51.3	52.0/39.8	52.0/51.3
Cargo Volume w/Rear Seat (cu ft) ¹		30.2	37.3	30.2	37.3
Cargo Volume w/Rear Seat Folded (cu ft)		66.9	74.1	66.9	74.1
Load Floor Length w/Rear Seat (in.) at Belt/Floor		28.5/35.2	35.1/40.5	28.5/35.2	35.1/40.5
Load Floor Length w/Rear Seat Folded (in.) at Belt/Floor		63.8/68.1	70.6/74.6	63.8/68.1	70.6/74.6
Maximum Cargo Width @ Floor (in.)	W200	53.1	53.1	53.1	53.1
Inside Width between Wheelhousings (in.)	W201	38.1	38.1	38.1	38.1
Cargo Area Height (in.)	H505	34.5	34.6	34.5	34.6

¹Measured floor to roof.

BLAZER EQUIPMENT SUMMARY

STANDARD INTERIOR FEATURES

		BASE	YC3	YC5	YC6
AIR BAG:	DRIVER'S SIDE	S	S	S	S
AIR CONDITIONING:	(R134A)	S	S	S	S
ASSIST HANDLES:	PASSENGER	S	S	S	S
CARGO TIE DOWNS:	(4)	S	S	S	S
COAT HOOKS:	RH AND LH REAR SEAT, INCLUDES 2 IN CARGO AREA (4-DOOR ONLY)	S	S	S	S
CUP HOLDERS:	2-DOOR (4)	S	S	S	S
	4-DOOR (2)	S	--	--	--
	4-DOOR (4)	--	S	S	S
DOOR BEAMS:	SIDE IMPACT	S	S	S	S
DOOR LOCKS:	REAR CHILD SECURITY (4-DOOR ONLY)	S	S	S	S
FLOOR COVERING:	COLOR-KEYED CARPETING AND CARPETED FLOOR MATS	S	S	S	S
HEADLINER:	COLOR-KEYED, CLOTH COVER	S	S	S	S
HEATING DUCT:	REAR SEAT	S	S	S	S
INSTRUMENTATION:	WARNING LIGHTS FOR SEAT BELT, ABS/PARKING BRAKE, DIRECTION/HAZARD SIGNALS AND HIGH BEAM. GAGE PACKAGE INCLUDES VOLTMETER, OIL PRESSURE AND ENGINE TEMPERATURE GAGES, FUEL GAGE, TRIP ODOMETER AND SPEEDOMETER	S	S	S	S
INSULATION:	DASH PANEL, DOORS, FLOOR AND UNDERHOOD, INSTRUMENT PANEL AND COWL/FENDER SEAL	S	S	S	S
LOCK SYSTEM:	SINGLE 2-SIDED KEY	S	S	S	S
LAMPS:	DOOR AND ENDGATE-OPERATED DOME AND FRONT FLOOR COURTESY WITH DELAYED ENTRY FEATURE	S	S	S	S
SEAT BELTS:	CHILD COMFORT GUIDE, REAR OUTBOARD POSITIONS (4-DOOR)	S	S	S	S
SCOTCHGARD:	CARPETING AND CLOTH SEATS AND DOOR TRIM PANELS	S	S	S	S
STOWAGE BOX:	RH SIDE OF INSTRUMENT PANEL WITH DOOR ACTIVATED LIGHT, 2-DOOR ALSO INCLS TWO IN REAR SEAT AREA	S	S	S	S
TRAILERING:	WIRING HARNESS, 5-LEAD	S	S	S	S
WARNING TONE:	HEADLAMP-ON WARNING BUZZER	S	S	S	S
WINDOW:	SWING-OUT REAR QUARTER (2-DOOR ONLY)	S	S	S	S
CONVENIENCE PKG:	REAR WINDOW CONVENIENCE PACKAGE	--	S	S	S

STANDARD EXTERIOR FEATURES

		BASE	YC3	YC5	YC6
BRACKET:	LICENSE PLATE, FRONT	S	S	S	S
LAMP:	ENGINE COMPARTMENT	S	S	S	S
<u>LAMPS:</u>	<u>DAYTIME RUNNING</u>	S	S	S	S
MIRRORS:	LH & RH BELOW-EYE-LINE TYPE, BLACK, MANUAL	S	--	--	--
	LH & RH BELOW-EYE-LINE TYPE, POWER	--	S	S	S
S/PARE/TIRE/WHEEL:	FULL-SIZE TIRE W/STEEL WHEEL				
	2-DOOR: INSIDE MOUNTED W/COVER	S	S	--	--
	4-DOOR: UNDERBODY MOUNTED	S	S	S	S
TOW HOOKS:	FRONT (T10 ONLY) (2)	S	S	S	S
WINDSHIELD WIPERS:	INTERMITTENT (ADJUSTABLE)	S	S	S	S

BOLD, ITALICS AND UNDERLINED INDICATES NEW FEATURES FOR '96

REVISED: 1-29-96

1996 ORDER GUIDE

BLAZER
Pac

Prices Shown Are Manufacturer's Suggested Retail Prices (MSRP) At The Time Of Publication. These Prices Are To Be Used Only As An Aid To Inventory Management Since MSRP Figures Change Periodically. The Vehicle Price Schedule Is The Official Pricing Documentation Of Chevrolet Motor Division And Should Be Used In Discussing Vehicle Prices With Potential Buyers. The Model Prices Shown In The Order Guide Include The Destination Freight Charges.

BLAZER

TRIM DEFINITION & OPTION SUMMARY

STANDARD CHASSIS FEATURES

		BASE	YC3	YC5	YC6
ALTERNATOR	100 AMPS	S	S	S	S
BATTERY:	525 COLD CRANKING AMPS	S	S	S	S
BRAKES:	POWER ASSISTED, FRONT DISC, REAR DRUM W/FOUR WHEEL ANTI-LOCK BRAKING SYSTEM	S	S	S	S
ENGINE:	<u>VORTEC 4300 V6 SFI</u>	S	S	S	S
FUEL TANK:	<u>19 GALLON CAPACITY (2-DOOR)</u>	S	S	S	S
	<u>18 GALLON CAPACITY (4-DOOR)</u>	S	S	S	S
STABILIZER BAR:	FRONT AND REAR	S	S	S	S
SUSPENSION FRT:	S10: INDEPENDENT COIL SPRINGS	S	S	S	S
	T10: INDEPENDENT TORSION BAR	S	S	S	S
SUSPENSION REAR:	SEMI-FLOATING AXLE, 2-STAGE LEAF SPRINGS	S	S	S	S
TRANSMISSION:	4-SPEED ELECTRONICALLY CONTROLLED AUTOMATIC W/OVERDRIVE	S	S	S	S

INTERIOR TRIM

		BASE	YC3	YC5	YC6
CONSOLE	SEAT SEPARATOR: (2-DOOR)	S	S	--	--
	SEAT SEPARATOR: (4-DOOR)	--	--	--	S
DOOR TRIM PANELS:	W/LH & RH MOLDED MAP POCKETS MOLDED PLASTIC W/SOFT CLOTH UPPER INSERT W/INTEGRAL PADDED ARM RESTS	S	S	S	--
	W/LH & RH MOLDED MAP POCKETS MOLDED PLASTIC W/SIMULATED LEATHER UPPER INSERT W/INTEGRAL PADDED ARM RESTS	--	--	--	S
GLASS:	SOLAR RAY, DEEP TINT W/LT TINT REAR	S	--	--	--
	SOLAR RAY, DEEP TINT W/DARK TINT REAR	--	S	S	S
MIRRORS:	INTERIOR REARVIEW, DAY/NIGHT	S	--	--	--
	INTERIOR REARVIEW, DAY/NIGHT W/MAP LIGHT	--	S	S	S
POWER POINTS:	DUAL COVERED	--	S	S	S
RADIO	ETR/AM/FM STEREO WITH DIGITAL CLOCK (INCLS 4 SPEAKERS) ELECTRONICALLY TUNED AM/FM STEREO RADIO W/SEEK-SCAN, STEREO CASSETTE TAPE AND DIGITAL CLOCK	S	--	--	--
		O	S	S	S
SEATS:	4-DOOR: 60/40 SPLIT BENCH W/STORAGE ARMREST, T10 ALSO INCLUDES SPLIT REAR SEAT	S	S	S	--
	BUCKET, W/MANUAL LUMBAR ADJUSTER (INCLS CONSOLE) (2-DOOR)	S	S	--	--
	BUCKET, W/POWER LUMBAR (INCLS CONSOLE) (4-DOOR)	--	--	--	S
SUNSHADE:	PADDED, COLOR-KEYED, WITH ELASTIC STRAPS AND RH VANITY MIRROR	S	--	--	--
	DUAL PADDED, W/STRAPS AND LH & RH LIGHTED MIRRORS	--	S	S	S

EXTERIOR TRIM

BUMPERS:	FRONT & REAR				
	S10: LOWER BODY COLOR	S	S	--	--
	T10: DARK GRAY W/DARK GRAY END CAPS	S	S	--	--
	BODY COLOR (ALL)	--	--	S	S
MOLDING:	BODY SIDE, DARK GRAY	--	--	S	S
GRILLE:	DARK GRAY	S	--	--	--
	CHROME	--	S	S	S
HEADLAMPS:	HALOGEN SEALED BEAM	S	S	--	--
	HALOGEN COMPOSITE	--	--	S	S
TRANSFER CASE:	MANUAL SHIFT (T10 ONLY)	S	S	S	--
WHEELS:	15 X 7 STEEL, ARGENT W/BLACK CENTER CAP AND TRIM RINGS	S	--	--	--
	ALUMINUM, CAST	O	S	S	S

BOLD, ITALICS AND UNDERLINED INDICATES NEW FEATURES FOR '96

MODEL AND BODY

Base	Description	Model No	Body
2-DOOR MODEL			
	Tailgate 2-Wheel Drive	CS10516	E55
	Tailgate 4-Wheel Drive	CT10516	E55

*Includes Destination & Handling Charges

EMISSIONS (Must Be Specified) (Refer Emission Requirements Section)

- FE9 Federal Emission Requirements
- NG1 New York/Massachusetts/New York State Emissions Requirements
- YF5 California Emission Requirements
- NB8 California/New York/Massachusetts Emission Override (Requires FE9 Federal Emissions)
- NC7 Federal Emission Override (Requires NG1 New York/Massachusetts or YF5 California Emissions)

**SUSPENSION AND POWER TEAMS CHART
(MUST SPECIFY)**

Required Options (Shaded Area) **2-DOOR**

MODELS	CS10516	CT10516	CS10516	CT10516	CT10516
SUSPENSION	Z83 (Smooth)		Z85 (Touring)		ZM6 (Off-Road)
RIDE CHARACTERISTICS	Smooth		Firm	Sporty/Firm	Very Firm
TRAILERING EQUIP AVAIL	Light-Duty		Heavy-Duty/Light-Duty		Heavy-Duty/Light-Duty
GVW RATING	4450	4785	4450	4850	4850
GAWF/GAWR	2200/2600	2500/2600	2200/2600	2500/2700	2500/2700
REQUIRED OPTIONS					
GVWR	C3G	C6B	C3G	C6I	C6I
TIRES	QCA/QCE	QCE	QBF/QBG	QBF/QBG/QEB	QEB
ENGINE	L35	L35	L35	L35	L35
TRANSMISSION	M30	M30	M30	M50 (c) M30	M50 (c) M30
AXLE RATIO	GU4 (a) (3.08)	GU4 (a) (3.08)	GU4 (a) (3.08)	GU6 (b) GU6 (a) (3.42) (3.42)	GU6 (b) GU6 (a) (3.42) (3.42)
	GU6 (b) (3.42)	GU6 (3.42)	GU6 (3.42)	GT4 (b) (3.73)	GT4 (b) (3.73)
		M50 (c) GU6 (b) (3.42)	M50 (c) GU6 (b) (3.42)		

- (a) N/A G80 Locking Differential
- (b) Requires G80 Locking Differential
- (c) Requires U16 Tachometer

THE LOWEST NUMERICAL AXLE RATIO HAS BEEN ENGINEERED TO COVER THE WIDEST RANGE OF APPLICATIONS AND OFFER THE BEST FUEL ECONOMY

Prices Shown Are Manufacturer's Suggested Retail Prices (MSRP) At The Time Of Publication. These Prices Are To Be Used Only As An Aid To Inventory Management Since MSRP Figures Change Periodically. The Vehicle Price Schedule Is The Official Pricing Documentation Of Chevrolet Motor Division And Should Be Used In Discussing Vehicle Prices With Retail Customers. The Model Prices Shown In The Order Guide Include The Destination Freight Charges.

MODEL AND BODY

Base	Description	Model No	Body
	4-DOOR MODEL		
	Tailgate 2-Wheel Drive	CS10506	E55
	Tailgate 4-Wheel Drive	CT10506	E55

*Includes Destination & Handling Charges

EMISSIONS (Must Be Specified) (Refer Emission Requirements Section)

- FE9 Federal Emission Requirements
- NG1 New York/Massachusetts Emissions Requirements
- YF5 California Emission Requirements
- NB8 California/New York/Massachusetts Emission Override (Requires FE9 Federal Emissions)
- NC7 Federal Emission Override (Requires NG1 New York/Massachusetts or YF5 California Emissions)

**SUSPENSION AND POWER TEAMS CHART
(MUST SPECIFY)**

Required Options (Shaded Area)

4-DOOR

MODELS	CS10506	CT10506	CS10506	CT10506	CS10506	CT10506
Suspension	ZQ1 (Smooth)		ZB5 (Touring)		ZW7 (Premium)	
RIDE CHARACTERISTICS	Smooth	Smooth	Firm	Sporty/Firm	Premium Smooth	
TRAILERING EQUIP AVAIL	Light-Duty	Light-Duty	Light-Duty/Heavy-Duty		Light-Duty/Heavy-Duty	
GVW RATING	4850	5300	4850	5300	4850	5300
GAWF/GAWR	2400/2700	2700/2700	2400/2800	2700/2900	2400/2700	2700/2700
REQUIRED OPTIONS						
GYWR	C6I	C3H	C6I	C3H	C6I	C3H
TIRES	QCA/QCE	QCE	QBF/QBG	QBF/QBG/QEB	QBF/QBG	QBF/QBG
ENGINE	L35	L35	L35	L35	L35	L35
TRANSMISSION	M30	M30	M30	M30	M30	M30
AXLE RATIO	GU4 (a) (3.08)	GU4 (a) (3.08)	GU4 (a) (3.08)	GU6 (3.42)	GU4 (a) (3.08)	GU6 (3.42)
	GU6 (3.42)	GU6 (3.42)	GU6 (3.42)	GT4 (b) (3.73)	GU6 (3.42)	GT4 (b) (3.73)

- (a) N/A G80 Locking Differential
- (b) Requires G80 Locking Differential

THE LOWEST NUMERICAL AXLE RATIO HAS BEEN ENGINEERED TO COVER THE WIDEST RANGE OF APPLICATIONS AND OFFER THE BEST FUEL ECONOMY

AXLE, EMISSION, ENGINE, PEG, TIRE AND TRANSMISSION **MUST** BE SPECIFIED.

No Deletions Allowed. Additional Options/Upgrades (Where Indicated) May be Ordered from the Additional Ordering Option Listing.

	BASE		LS		LT
	1 S A	1 S B	1 S C	1 S D	1 S E
Preferred Equipment Group					
Body: Standard E55	x	x	x	x	x
Preferred Equipment Group					
Convenience Group: Tilt Steering Wheel and Speed Control ZQ3		x	x	x	x
Convenience Group: Power Windows, Locks and Mirrors ZQ6		x	x	x	x
Luggage Carrier V54		x	x	x	x
Radio: ETR AM/FM Stereo w/Seek-Scan Cassette Tape and Clock (A) UM6		x	x	x	N/A
Seating: Rear Folding (Std on T10506) AM7		x	x	x	x
Suspension Package: Premium (C*10506) (B) ZW7		x	x	x	x
Suspension Package: Touring (C*10516) (B) Z85		x	x	x	x
Tires: P235/70R15 B/W (C) QBF		x	x	x	x
Preferred Equipment Group					
LS Decor (D) YC3			x	x	N/A
Preferred Equipment Group					
Console: Overhead DK6				x	x
Keyless Entry, Remote (Std with LT Decor) AU0				x	x
Seat, Power 6-Way Driver (Std with LT Decor) AG1				x	x
Seats: Bucket (Incls Console) AV5				x	N/A
Preferred Equipment Group (Available on C*10506 Only)					
LT Decor YC6					x
Air Dam w/Fog Lamps (2WD) ANL					x
Electronic Shift Transfer Case (4WD) (F) NP1					x
Tachometer U16					x
Radio: ETR AM Stereo /FM Stereo w/Seek-Scan Cassette Tape & Clock (E) UX1					x

- (A) UM6: May substitute UX1 Radio: May substitute U1C Radio with PEGS 1SC or 1SD
- (B) ZW7/Z85: May substitute (Refer to Suspension Power Team Chart)
- (C) QBF: May substitute (Refer to Suspension Power Team Chart)
- (D) YC3: May substitute YC5 Exterior Appearance Package (4-Door Model Only)
- (E) UX1: May substitute U1C Radio
- (F) NP1: May be deleted for credit or May Upgrade to F46 All Wheel Drive

PREFERRED EQUIPMENT GROUP PRICES

N.C.	1SA			
	1SB	1SC	1SD	1SE
	C*10516	C*10516	C*10516	CS10506
	CS10506	CS10506	CS10506	CT10506
	CT10506	CT10506	CT10506	PEG Savings
	PEG Savings	PEG Savings	PEG Savings	

*The Preferred Equipment Group MSRP's Reflect the Basic Group Equipment Prices. For any Option Additions, Upgrades, or Substitutions. Refer to the Vehicle Price Schedule for any Price Differential.
 **PEG Savings amount represents the savings for Preferred Equipment Groups

ADDITIONAL OPTIONS

**INCL.
W/P.E.G. OPTION**

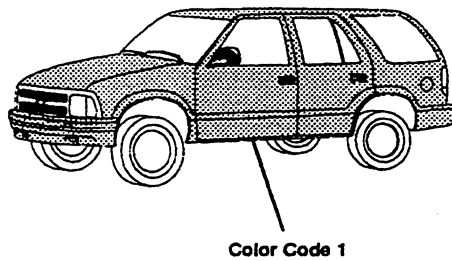
		ACKNOWLEDGEMENTS:
	R8S	Multiple Order Numbers
	R8T	Preliminary Invoice
E	ANL	AIR DAM WITH FOG LAMPS: (S10 Only) (N/A 1SA/1SB)
		AXLES, REAR: (Refer Power Teams Chart for Availability) (Must Order)
	GU4	3.08
	GU6	3.42
	GT4	3.73
	G80	Locking Differential
A,B,C,D,E	UA1	BATTERY: Heavy-Duty, 690 Cold Cranking Amps Delco Freedom (Incl w/V10 Cold Climate)
	E55	BODY CODE: Tailgate (Refer Model and Body Section)
		CARRIERS: (Must Specify) (Available on CT10516 Only)
	PNV	Outside Spare Tire Carrier Not Desired (Incl w/CS10516) (N/A QEB Tires)
	P16	Outside Spare Wheel and Tire Carrier (Incls Cover)
	F46	CHASSIS PACKAGE: All Wheel Drive (CT10506 Only) (Reqs 1SE and ZW7 Susp Pkg) (w/1SE, F46 Replaces NP1 Transfer Case) (N/A ZM5 Shield Package)
	V10	COLD CLIMATE PACKAGE: (Incls UA1 Battery and Engine Block Heater)
D,E	DK6	CONSOLE: Overhead (Reqs Bucket Seats) (N/A 1SA/1SB)
		DECOR: (Refer Standard Equipment for Package Content)
C,D	YC3	LS: Base
	YC5	LS: W/Exterior Appearance Pkg
E	YC6	LT: Luxury
B,C,D,E	ZQ6	DRIVER CONVENIENCE:
		Power Windows, Locks and Mirrors
		C*10516
		C*10506
B,C,D,E	ZQ3	Tilt Steering and Speed Control
	ZM8	Rear Window Convenience Package (Standard w/YC3, YC5 or YC6 Decor; Also Available w/1SA/1SB) (Incls Electric Tailgate Release, Rear Window Defogger and Wiper/Washer System)
		w/o YC3, YC5 or YC6 Decor
		w/YC3, YC5 or YC6 Decor
		EMISSIONS SYSTEMS: (Refer Emissions Requirement Tab Section)
	FE9	Federal Emission Requirements
	NG1	New York/Massachusetts Emission Requirements
	YF5	California Emission Requirements
	NB8	California/New York/Massachusetts Emission Override (Reqs FE9 Federal Emissions)
	NC7	Federal Emission Override (Reqs NG1 New York/Massachusetts or YF5 California Emissions)
	L35	ENGINE: Vortec 4300 V6 SFI (Incls Engine and Transmission Oil Coolers)
		GVWR: (MUST SPECIFY ONE) (Refer Suspension and Power Teams Chart for Requirements)
	C3G	4450#
	C6B	4785#
	C6I	4850#
	C3H	5300#
D,E	AU0	KEYLESS ENTRY, REMOTE: (Reqs AG1 Power Seat Adjuster) (N/A 1SA/1SB) (Std on LT)
B,C,D,E	V54	LUGGAGE CARRIER: Black
		PAINT, EXTERIOR: (Refer Trim Chart for Availability)
	ZY1	Solid
	ZY7	Custom Two-Tone (Reqs YC3/YC5/YC6) (N/A 2-Door)
		RADIO EQUIPMENT: (Electronically Tuned AM /FM Stereo Radio w/Digital Clock Standard) (All Radios Incl Premium Speakers)
B,C,D	UM6	Electronically Tuned AM/FM Stereo Radio w/Seek-Scan, Stereo Cassette Tape and Digital Clock
E	UX1	Electronically Tuned AM Stereo /FM Stereo Radio w/Seek-Scan, Stereo Cassette Tape with Search and Repeat, Graphic Equalizer and Digital Clock (Incls 6 Speakers)
		w/PEG 1SA
		w/PEGS 1SB/1SC/1SD
	U1C	Electronically Tuned AM/FM Stereo Radio w/Seek-Scan, Compact Disc Player and Digital Clock (Incls 6 Speakers) (N/A 1SA/1SB)
		w/PEGS 1SC/1SD
		w/PEG 1SE
	UL5	Radio Delete (Avail w/1SA Only)
D	AV5	SEAT OPTION: (Refer Color and Trim Chart for Availability) (Bucket Seats Incl Seat Separator Console)
		Reclining High Back Buckets (N/A 1SA/1SB on C*10506)
		C*10516
		C*10506
	AN3	Front Buckets (Reqs 1SE)
	AM6	60/40 Reclining Split Folding Front Bench Seat (Incls Storage Armrest and Dual Cupholders) (N/A 2-Door or 1SD)
		SEATING: (w/1SA Must Order AM7 or YG4 Seat on C*10516 or S10506 Models)
		Rear Seat Not Desired (N/A AM7 Seat) (N/A T10506) (Reqs 1SA)
B,C,D,E	YG4	Rear, Split Folding (2-Passenger on 2-Door Models) (3-Passenger on 4-Door Models) (Std on T10506)
	AM7	Driver, 6-Way Power Adjuster (Std on LT)(N/A 1SA/1SB) (Reqs AU0 Keyless Entry Remote)
D,E	AG1	SHADE, REAR COMPARTMENT: (Available CT10516 w/YC3 and P16 Only) (Std on 4-Door w/YC3, YC5, YC6)
	RYJ	SHIELD PACKAGE: (T10 Only) (Incls Transfer Case, Front Differential Skid Plates, Fuel Tank and Steering Linkage Shield) (N/A F46 All-Wheel Drive Chassis)
	ZM5	

ADDITIONAL OPTIONS

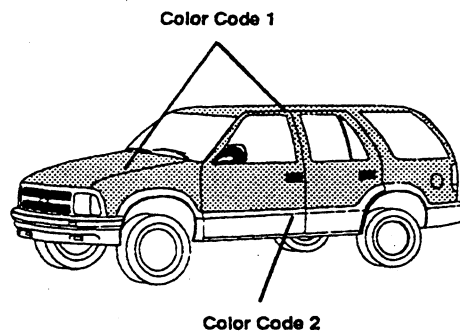
INCL. W/P.E.G. OPTION		
		SUSPENSION PACKAGE: (Refer Suspension and Power Team Chart)
	Z01	Smooth (4-Door Only) PEG 1SA
	Z83	Smooth (2-Door Only) PEG 1SA PEGS 1SB/1SC/1SD/1SE
B,C,D,E	Z85	Touring (Incls Special Orange deCarbon Gas Shock Absorbers) w/o PEG 1SA w/PEG 1SA
	ZM6	Off-Road (T10516 Only) (Reqs QEB Tires) (Incls Special Yellow Bilstein Gas Shocks, Upsized Torsion Bar, Jounce Bumpers and Stabilizer Bar) w/PEGS 1SB/1SC/1SD w/PEG 1SA
B,C,D,E	ZW7	Premium Ride (C*10506 Only) (Incls Special Orange deCarbon Gas Shock Absorbers) w/o PEG 1SA w/PEG 1SA
		TIRES: (B/W: Blackwall, W/L: White Lettered, WOL: White Outlined) (Incls Full-Size Spare Tire) All-Seasons Steel Belted Radial Ply (Front, Rear and Spare)
	QCE	P205/75R-15 B/W
	QCA	P205/75R-15 W/L
B,C,D,E	QBF	P235/70R-15 B/L
	QBG	P235/70R-15 WOL
	QEB	On-Off Road Steel Belted Radial Ply (Front, Rear and Spare) P235/75R-15 WOL (T10 Only) (Reqs Z85/ZM6 Suspension Package) (P16 Carrier incl w/YC3 and CT10516) w/ZM6 w/PEGS 1SB/1SC/1SD/1SE w/o ZM6 or PEGS 1SB/1SC/1SD/1SE
E	U16	TACHOMETER (Reqd w/M50 Transmission)
	Z82	TRAILERING SPECIAL EQUIPMENT: Heavy-Duty (N/A ZQ1 Suspension on CS10506) (Incls 7-Lead Wiring Harness, Weight Distributing Hitch Platform and Heavy-Duty Flasher) CS105*6 Reqs GU4/GU6 Axle, CT10506 Reqs GT4/GU6 Axle (CS105*6 Also Reqs M30 Trans) CT10516 Reqs GT4/GU6 Axle
E	NP1	TRANSFER CASE: Electronic Shift (T10 Only)
	M30	TRANSMISSION: 4-Speed Electronically Controlled Automatic w/Overdrive (Incls Brake-Transmission Shift Interlock)
	M50	5-Speed Manual w/Overdrive (C*10516 Only) (Refer Power Teams Chart for Availability) (Reqs U16 Tachometer)
		WHEELS:
	N60	Aluminum, Argent (Std w/YC3, YC5 or YC6) (CS105*6 Only)
	N90	Aluminum, Cast (Std w/YC3/YC5/YC6) (CT105*6 Only)
	SP2	Special Aluminum (T10 Only) (T10506 Reqs YC3 or YC5 Decor) (T10516 Reqs YC3 Decor)
	PA3	Aluminum, Bright w/Medium Gray Accent (Reqs YC3) (CT105*6 Only)

BLAZER Paint Applications

SOLID PAINT - ZY1



CUSTOM TWO-TONE PAINT - ZY7



**BLAZER 2-DOOR
INTERIOR AND EXTERIOR COLOR AVAILABILITY CHART**

PLEASE NOTE: Below are the interior trim color and exterior paint combinations recommended by Chevrolet. They are the only interior and exterior color combinations available.

ZY1 PAINT

TRIM LEVEL Seat Type		Seat Option	INTERIOR COLORS		
			Beige	Graphite	Gray
STANDARD DECOR Deluxe Cloth Reclining High Back Bucket Seats		AV5	64H	12H	13H
LS DECOR Premium Cloth Reclining High Back Bucket Seats		AV5	64H	12H	13H
EXTERIOR COLORS	Color Code	ZY CODE	RECOMMENDED INTERIOR TRIM COLORS		
AUTUMNWOOD, LT (MET)	55U	ZY1	x	x	
BLACK, ONYX	41U	ZY1	x	x	x
BLUE, LT (MET)	27U	ZY1		x	x
GREEN, EMERALD (MET)	43U	ZY1	x	x	x
GREEN, TEAL (MET)	38U	ZY1	x	x	x
PURPLE (MET)	21U	ZY1		x	x
QUICKSILVER (MET)	96U	ZY1		x	x
RED, APPLE	72U	ZY1	x	x	x
RED, DK CHERRY (MET)	94U	ZY1	x	x	x
WHITE, SUMMIT	50U	ZY1	x	x	x

**BLAZER 4-DOOR
INTERIOR AND EXTERIOR COLOR AVAILABILITY CHART
ZY1 PAINT SCHEME
WITHOUT YC6**

PLEASE NOTE: Below are the interior trim color and exterior paint combinations recommended by Chevrolet. They are the only interior and exterior color combinations available.

TRIM LEVEL Seat Type		Seat Option	INTERIOR COLORS			
			Beige	Navy	Graphite	Gray
STANDARD DECOR						
Deluxe Cloth Reclining Split Bench Seat		AM6	64H		12H	13H
LS DECOR						
Premium Cloth Reclining Split Bench Seat		AM6	64H	26H	12H	13H
Premium Cloth Reclining High Back Bucket Seats		AV5	64H	26H	12H	13H

EXTERIOR COLORS	Color Code	ZY CODE	RECOMMENDED INTERIOR TRIM COLORS			
AUTUMNWOOD, LT (MET)	55U	ZY1	x		x	
BLACK, ONYX	41U	ZY1	x		x	x
BLUE, LT (MET)	27U	ZY1		x	x	x
GREEN, EMERALD (MET)	43U	ZY1	x		x	x
GREEN, TEAL (MET)	38U	ZY1	x		x	x
PURPLE (MET)	21U	ZY1			x	x
QUICKSILVER (MET)	96U	ZY1		x	x	x
RED, APPLE	72U	ZY1	x		x	x
RED, DK CHERRY (MET)	94U	ZY1	x		x	x
WHITE, SUMMIT	50U	ZY1	x	x	x	x

**BLAZER 4-DOOR
INTERIOR AND EXTERIOR COLOR AVAILABILITY CHART
ZY7 PAINT SCHEME WITH YC3 OR YC5**

TRIM LEVEL Seat Type		Seat Option	INTERIOR COLORS			
			Beige	Navy	Graphite	Gray
LS DECOR						
Premium Cloth Reclining Split Bench Seat		AM6	64H	26H	12H	13H
Premium Cloth Reclining High Back Bucket Seats		AV5	64H	26H	12H	13H

EXTERIOR COLORS	Color Code 1	Color Code 2	ZY CODE	RECOMMENDED INTERIOR TRIM COLORS			
AUTUMNWOOD, LT (MET)/BLACK, ONYX	55U	41L	ZY7	x		** x	
BLACK, ONYX/AUTUMNWOOD, LT (MET)	41U	55L	ZY7	x		x	
BLACK, ONYX/GREEN, TEAL (MET)	41U	38L	ZY7	x		x	x
BLACK, ONYX/QUICKSILVER (MET)	41U	96L	ZY7			x	x
*BLACK, ONYX/RED, DK CHERRY (MET)	41U	94L	ZY7	x		x	x
BLUE, LT (MET)/QUICKSILVER (MET)	27U	96L	ZY7		* x	x	x
GREEN, EMERALD (MET)/AUTUMNWOOD, LT (MET)	43U	55L	ZY7	x			
GREEN, EMERALD (MET)/QUICKSILVER (MET)	43U	96L	ZY7			x	x
GREEN, TEAL (MET)/AUTUMNWOOD, LT	38U	55L	ZY7	x			
GREEN, TEAL (MET)/QUICKSILVER (MET)	38U	96L	ZY7			x	x
PURPLE (MET)/QUICKSILVER (MET)	21U	96L	ZY7			x	x
QUICKSILVER (MET)/BLACK, ONYX	96U	41L	ZY7			x	x
*QUICKSILVER (MET)/GREEN, EMERALD (MET)	96U	43L	ZY7				x
QUICKSILVER (MET)/GREEN, TEAL (MET)	96U	38L	ZY7	x		x	x
*QUICKSILVER (MET)/PURPLE (MET)	96U	21L	ZY7				x
*QUICKSILVER (MET)/RED, DK CHERRY (MET)	96U	94L	ZY7			x	x
RED, APPLE/BLACK, ONYX	72U	41L	ZY7	x		x	x
RED, APPLE/AUTUMNWOOD, LT (MET)	72U	55L	ZY7	x			
RED, APPLE/QUICKSILVER (MET)	72U	96L	ZY7			x	x
RED, DK CHERRY (MET)/BLACK, ONYX	94U	41L	ZY7	x		x	x
RED, DK CHERRY (MET)/AUTUMNWOOD, LT (MET)	94U	55L	ZY7	x			
*RED, DK CHERRY (MET)/QUICKSILVER (MET)	94U	96L	ZY7			x	x
WHITE, SUMMIT/AUTUMNWOOD, LT (MET)	50U	55L	ZY7	x			
WHITE, SUMMIT/QUICKSILVER (MET)	50U	96L	ZY7				x

*NA W/YC5

**NA W/YC3

**BLAZER 4-DOOR LT
INTERIOR AND EXTERIOR COLOR AVAILABILITY CHART
ZY1 PAINT SCHEME
REQS YC6**

PLEASE NOTE: Below are the interior trim color and exterior paint combinations recommended by Chevrolet. They are the only interior and exterior color combinations available.

TRIM LEVEL Seat Type		Seat Option	INTERIOR COLORS			
			Beige	Graphite	Gray	
LT DECOR Custom Leather Reclining High Back Bucket Seats (Pwr Driver)		AN3	642	122	132	
EXTERIOR COLORS		Color Code	ZY CODE	RECOMMENDED INTERIOR TRIM COLORS		
AUTUMNWOOD, LT (MET)		55U	ZY1	x	x	
BLACK, ONYX		41U	ZY1	x	x	x
BLUE, LT (MET)		27U	ZY1		x	x
GREEN, EMERALD (MET)		43U	ZY1	x	x	x
GREEN, TEAL (MET)		38U	ZY1	x	x	x
PURPLE (MET)		21U	ZY1		x	x
QUICKSILVER (MET)		96U	ZY1		x	x
RED, APPLE		72U	ZY1	x	x	x
RED, DK CHERRY (MET)		94U	ZY1	x	x	x
WHITE, SUMMIT		50U	ZY1	x	x	x

**BLAZER 4-DOOR
INTERIOR AND EXTERIOR COLOR AVAILABILITY CHART
ZY7 PAINT SCHEME
Reqs YC6**

TRIM LEVEL Seat Type		Seat Option	INTERIOR COLORS				
			Beige	Graphite	Gray		
LT DECOR Custom Leather Reclining High Back Bucket Seats (Pwr Driver)		AN3	642	122	132		
EXTERIOR COLORS		Color Code 1	Color Code 2	ZY CODE	RECOMMENDED INTERIOR TRIM COLORS		
AUTUMNWOOD, LT (MET)/BLACK, ONYX		55U	41L	ZY7	x	x	
BLACK, ONYX/AUTUMNWOOD, LT (MET)		41U	55L	ZY7	x	x	
BLACK, ONYX/GREEN, TEAL (MET)		41U	38L	ZY7	x	x	x
BLACK, ONYX/QUICKSILVER (MET)		41U	96L	ZY7		x	x
BLACK, ONYX/RED, DK CHERRY (MET)		41U	94L	ZY7	x	x	x
BLUE, LT (MET)/QUICKSILVER (MET)		27U	96L	ZY7		x	x
GREEN, EMERALD (MET)/AUTUMNWOOD, LT (MET)		43U	55L	ZY7	x		
GREEN, EMERALD (MET)/QUICKSILVER (MET)		43U	96L	ZY7		x	x
GREEN, TEAL (MET)/AUTUMNWOOD, LT		38U	55L	ZY7	x		
GREEN, TEAL (MET)/QUICKSILVER (MET)		38U	96L	ZY7		x	x
PURPLE (MET)/QUICKSILVER (MET)		21U	96L	ZY7		x	x
QUICKSILVER (MET)/BLACK, ONYX		96U	41L	ZY7		x	x
QUICKSILVER (MET)/RED, DK CHERRY (MET)		96U	94L	ZY7		x	x
RED, APPLE/BLACK, ONYX		72U	41L	ZY7	x	x	x
RED, APPLE/AUTUMNWOOD, LT (MET)		72U	55L	ZY7	x		
RED, APPLE/QUICKSILVER (MET)		72U	96L	ZY7		x	x
RED, DK CHERRY (MET)/BLACK, ONYX		94U	41L	ZY7	x	x	x
RED, DK CHERRY (MET)/AUTUMNWOOD, LT (MET)		94U	55L	ZY7	x		
RED, DK CHERRY (MET)/QUICKSILVER (MET)		94U	96L	ZY7		x	x
WHITE, SUMMIT/AUTUMNWOOD, LT (MET)		50U	55L	ZY7	x		
WHITE, SUMMIT/QUICKSILVER (MET)		50U	96L	ZY7			x

NOTES