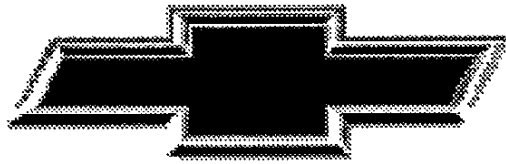




# 1996 S-10 TRUCK



GENUINE CHEVROLET



1  
1  
1



96

# S-Series Pickup

RED = New Feature.



## PERFORMANCE

- **IMPROVED 2.2 LITER ENGINE WITH SEQUENTIAL FUEL INJECTION** — improved for 1996, for quieter, smoother performance and extended maintenance intervals, compared to its predecessor. It delivers 118 hp @ 5200 rpm and 130 lb.-ft. of torque @ 2800 rpm.
- **IMPROVED 4300 VORTEC V6 WITH SEQUENTIAL-PORT FUEL INJECTION (STD. ON 4X4 MODELS) AND IMPROVED OPTIONAL VORTEC 4300 V6 SFI (REQUIRED ON SUPER SPORT)** — provides quieter, smoother performance and extended service intervals, compared to its predecessor.
- **NEW ZQ8 SPORT CHASSIS PACKAGE** — available on 2WD LS models, provides highway handling performance package.



## DURABILITY

- **NEW LONG-LIFE COOLANT** — extends coolant change intervals to 5 years/100,000 miles.
- **NEW 100,000-MILE SPARK PLUGS AND WIRES** — for extended service intervals.\*
- **SERPENTINE DRIVE BELT SYSTEM** — designed to last 100,000 miles.
- **NO NEED TO CHECK ENGINE TIMING** — ever.
- **BUMPER TO BUMPER WARRANTY** — 3-year/36,000-mile, no-deductible limited warranty, including parts and labor.



## SAFETY

- **NEW BRAKE/TRANSMISSION SHIFT INTERLOCK** — prevents driver from shifting from Park to Drive unless the brake is applied (automatic transmission only).
- **DAYTIME RUNNING LAMPS** — make vehicle more visible during daylight hours.
- **DRIVER AIR BAG** — designed to help protect against injury in certain moderate to severe frontal collisions. Always wear safety belts, even with air bags.
- **4-WHEEL ANTI-LOCK BRAKE SYSTEM (ABS)** — now standard on all models, helps maintain steering control and minimize wheel lockup on most slippery surfaces.



## EXTERIOR

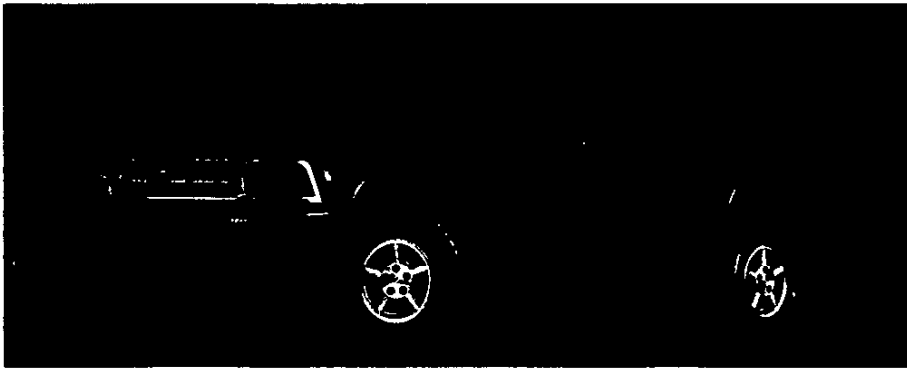
- **NEW OPTIONAL EXTENDED-CAB SIDE-ACCESS PANEL (INTERIM AVAILABILITY)** — provides easy entry/exit for rear-seat passenger and easy access to cargo located behind front seat.
- **NEW SPORTSIDE PICKUP BOX (INTERIM AVAILABILITY, NOT AVAILABLE WITH ZR2)** — handsome stepside design.
- **NEW WHEELS FOR 2WD AND 4X4 MODELS** — for a fresh styling touch.
- **TWO-SIDE-GALVANIZED STEEL** — on major exterior body panels (except the roof and pickup box front panel) makes additional rustproofing unnecessary.
- **BASE-COAT/CLEAR-COAT PAINT** — high-gloss shine, long-lasting exterior finish resists fading.



## INTERIOR

- **SCOTCHGARD™ PROTECTOR** — on cloth seats, door trim panels and carpet. Resists stains for easy cleanup.
- **SOLAR-RAY TINTED GLASS** — reduces the total solar energy transfer by one-third.
- **CUSTOM FOLDING STANDARD REAR JUMP SEATS** — in Extended-Cab models. Easily accommodates two rear-seat passengers. (NOTE: driver-side rear jump seat is eliminated when optional side-access panel is ordered.)
- **DUAL-COVERED POWER POINTS** — make it easy to power-up portable cellular phone, etc. Standard with LS trim.

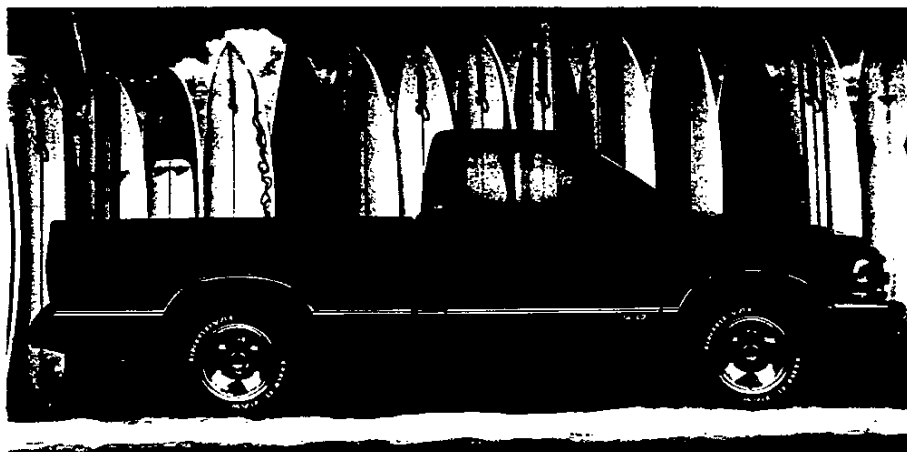
\*Maintenance needs vary with use and driving conditions.



## Feature Vehicles



There are two Feature vehicles for 1996 — the 4x4 S-Series ZR2 Extended-Cab LS Pickup (top, above) and the 4x4 Extended-Cab LS (top, below) with YCS Exterior Appearance Package. The former is a unique, high-stance vehicle ideal for those who take the fun of off-roading seriously; the latter, a practical, eye-catching, roomy personal pickup.



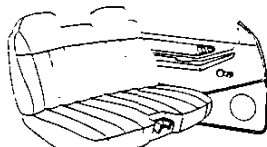
## Focus Vehicle



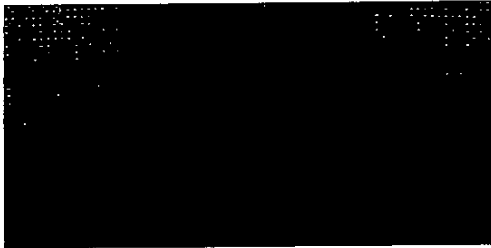
for 1996 is the 2WD S-Series Regular-Cab LS Short-Box Pickup (shown with YCS). This model appeals to buyers looking for a personal-size pickup with plenty of comfort, performance and versatile utility. When equipped with PEG 1SJ, it represents an excellent opportunity for high-volume S-Series Pickup sales at your dealership (detailed on the following sheet).

## Trim Color/Seat Style Availability

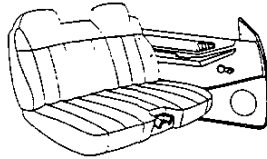
Custom Vinyl  
available in  
Gray.



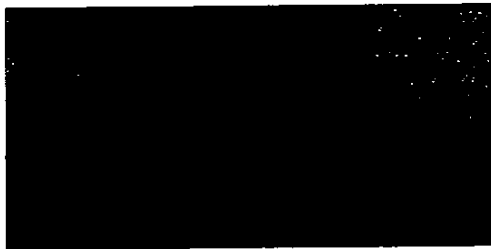
Bench seat — Custom Vinyl.



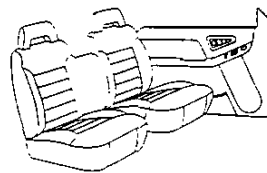
Custom Cloth available in Beige, Navy, Graphite and Gray.



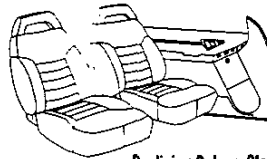
Bench seat  
— Custom Cloth.



Deluxe Cloth available in Beige, Navy, Graphite and Gray.



Reclining Deluxe Cloth  
60/40 split-bench seat — LS.



Reclining Deluxe Cloth  
high-back bucket seats — LS.

## Most Popular Exterior Colors by Percentage

Clockwise below are the anticipated four most popular S-Series Pickup and Extended-Cab colors, based on national sales volume. They are listed for reference only. To identify the top-selling colors in your area, by model, use the Retail Sales Analysis (RSA).



Summit White	17%
Dark Cherry Red Metallic	16%
Emerald Green Metallic	16%
Apple Red	14%
Other colors	37%

## Most Popular Exterior Colors with Corresponding Interior Color Availability

### Interior Material Colors

	Beige	Navy	Graphite	Gray
Exterior Colors				
Summit White	■	■	■	■
Dark Cherry Red Metallic	■		■	■
Emerald Green Metallic			■	■
Apple Red	■		■	■

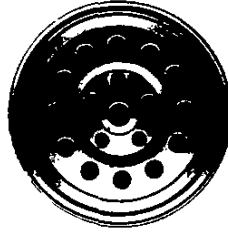
## Wheels



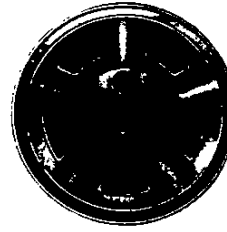
2WD Base 15" steel wheel with black center cap.



2WD 15" optional argent-color cast-aluminum wheel. Chrome center cap with gold bowtie (RPO N60). Included with LS Bonus Value Package.



4x4 15" special aluminum wheel. Optional (RPO 5P2) on all 4x4 models and trim levels.



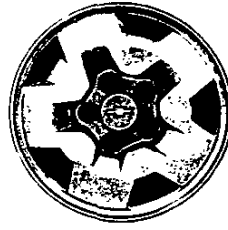
4x4 15" cast-aluminum wheel. Standard with Exterior Appearance Package. Optional (RPO N90) on all 4x4 models with LS trim.



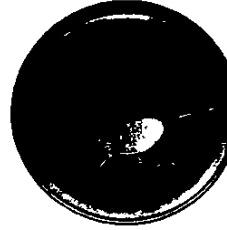
2WD 15" steel wheel. Included with LS trim. Argent color with black center cap and bright trim ring.



4x4 15" steel wheel. Standard on Base. Argent color with black center cap. Trim ring included with LS trim.



4x4 15" cast-aluminum wheel. Optional (RPO PA3) on LS 4x4 models. NA with Exterior Appearance Package or on Base models.



New 2WD Super Sport 16" Cast-aluminum wheel (RPO N96). Included with Super Sport (chrome center cap with red bowtie) and with ZQ8 suspension on YC3 trim (chrome center with gold bowtie).



# S-Series Pickup

## Feature Vehicles

4x4 S-Series ZR2  
Extended-Cab LS Pickup  
and 4x4 Extended-Cab LS  
(w/YC5)

NOTE: Feature vehicles are those typically featured in Chevrolet advertising. Focus vehicles are those chosen for their salability.

There are two 1996 Feature vehicles for S-Series Pickup: ZR2 Extended-Cab 4x4 LS and 4x4 Extended-Cab LS with YC5 Exterior Appearance Package (see below). ZR2 is an off-roader with a wider track than S-Series street trucks, and stands nearly three inches taller. Serious off-roaders may choose from Regular-Cab and Extended-Cab models. Some ZR2 special features include:

- 3-inches-higher chassis than standard
- Broad track (3.9 inches wider)
- Front fenders and pickup box outer panels with extra-wide wheel flares
- Larger 1.4-inch front stabilizer bar
- 46-mm Bilstein gas shocks
- 3.73:1 axle ratio
- Rear axle track bar
- Heavy-duty front and rear axle components
- 31 x 10.5 R-15 LT/C on-/off-road blackwall tires
- Underbody shield package.

The 4x4 Extended-Cab LS with YC5 Exterior Appearance Package teams Extended-Cab convenience with uncommonly good looks. Some LS special features include:

- Color-keyed carpeting
- Rear-quarter swing-out windows (Extended-Cab only)
- Deluxe Cloth 60/40 split-bench seat with center armrest and storage compartment
- Chrome grille.

The YC5 Exterior Appearance Package adds the following features:

- Color-keyed bumper
- Body-side moldings with bright inserts
- Bright wheel-opening moldings
- Aluminum wheels.

## Focus Vehicle

S-Series Regular-Cab  
Short-Box 2WD LS Pickup

### Ordering Recommendations:

The recommended 2WD S-Series Regular-Cab Short-Box LS Pickup content, based on national sales volume, is listed below to assist your dealership in ordering.

2WD Regular-Cab with Preferred Equipment Group 1SJ includes:

- Body: Fleetside
- LS Decor
- AM/FM Stereo with Seek-Scan, Cassette Tape Player and Digital Clock
- Bonus Value Cast-Aluminum Wheels.

NOTE: Model, PEG and optional content may vary in your locality. Use the Retail Sales Analysis (RSA) to verify or select your dealership's S-Series Pickup Focus vehicle content.

## Product Positioning

The S-Series Pickup is positioned as the personal-size pickup that delivers impressive performance with traditional Chevy value. This popular family of trucks has been intelligently designed from the inside out so that almost anyone can comfortably settle into the interior.

The LS trim level will have wide appeal to segment buyers and is made even more attractive with the PEG 1SJ Bonus Value Packages for 2WD and 4x4 models.

The available new Extended-Cab side-access panel (interim 1996) is sure to help set S-Series apart from the competition. It allows easy access to behind-the-seat storage space.

Adding to the S-Series formidable competitiveness is the new LS YC3 trim and Sportside box. It gives young buyers a low-cost sport truck, complete with Sportside box and black-lettered tires. The box is completely functional and easy to step up to, both front and back.

## Competitive Vehicles

- Ford Ranger
- Toyota Tacoma Pickup
- Nissan Hardbody
- Mazda B-Series
- Dodge Dakota.

Dealer Order Guide

# S-Series Pickup

## Forecasted Percent of Mix

<b>SERIES</b>	
S-Series 2WD	85%
S-Series 4x4	15%
<b>Total</b>	<b>100%</b>
<b>MODELS</b>	
Regular-Cab Short-Box	44%
Regular-Cab Long-Box	8%
Extended-Cab Short-Box	48%
<b>Total</b>	<b>100%</b>
<b>TRIM LEVELS</b>	
Standard	15%
YC3 LS Decor	35%
YC5 LS Decor with Exterior Appearance Package	35%
YC3 LS with Sportside Box	15%
<b>Total</b>	<b>100%</b>
<b>ENGINES</b>	
2.2 Liter L4	50%
4300L V6 with SFI (LF6)	45%
4300L V6 with SFI (L35)	5%
<b>Total</b>	<b>100%</b>
<b>TRANSMISSIONS</b>	
5-Speed Manual with Overdrive	45%
4-Speed Electronically Controlled Automatic with Overdrive	55%
<b>Total</b>	<b>100%</b>

## Additional Information on Significant Features

- The improved L35 and new LF6 Vortec V6 engines are part of the most significant Chevrolet engine upgrade in 20 years. Both boast Sequential Fuel Injection for quieter, smoother operation and extended service intervals, compared to their predecessors. Both will be OBD II compliant (capable of detecting emissions control system deterioration, not simply failure) by interim 1996. (See the Engine and Transmission Insert for a more detailed discussion of these important engine advancements.)
- The 2.2 Liter L4 engine receives 100,000-mile spark plugs and 5 year/100,000-mile coolant. OBD II compliance is another plus feature. (See the Engine and Transmission Insert for a more detailed discussion of these important engine advancements.)
- The available Extended-Cab side-access panel means more pleasability for these popular models. It allows easy access to behind-the-seat storage space (the rear jump seat behind the driver is eliminated when this interim option is selected).
- New ZQ8 Sport Chassis package for 2WD Regular-Cab with LS YC3 trim and Sportside box makes available a low-cost entry-level sport truck. Included are stepside design with steel floorboard, black-lettered tires and special 16" wheels.
- 4-Wheel ABS is now standard on all model S-Series trucks. This important safety feature helps maintain steering control and minimize wheel lockup on most slippery surfaces.
- Standard Daytime Running Lamps. This important new safety feature turns on low-intensity high-beams during daylight operation to make the vehicle easier to see.

## Deletions

- Five colors have been deleted for 1996:  
Frost White (#12)  
Midnight Black (#19)  
Brilliant Blue Metallic (#22)  
Raspberry (#85)  
Khaki (#52)  
... and have been replaced by five new colors:  
Light Blue Metallic (#27)  
Onyx Black (#41)  
Emerald Green Metallic (#43)  
Summit White (#50)  
Light Autumnwood Metallic (#55).
- One interior color (Dark Blue) has been deleted and has been replaced with one new color, Navy.
- The manual lumbar adjustment on passenger bucket seats has been deleted.

S-Series

## 1996 PICKUP

### NEW OPTIONS

16 x 8 Aluminum Cast Wheel (Reqs ZQ8 Suspension)  
CS10653 W/Z83 Suspension

### SIGNIFICANT CHANGES

#### Peg Options

N96 - Aluminum Cast

ZY3 Decor Deleted

NG1 Emissions are now required for the States of New York/Massachusetts

Brake Transmission Shift Interlock

4-Wheel Anti-Lock Brakes

MW1 Transmission Deleted

MW2 Transmission Added

L35 Engine Enhancements

LN2 Engine Enhancements

LB4 Engine Deleted

LF6 Engine Added

QPP Tire Deleted

QJJ Tire Deleted

QCB Tire Added

### COLOR CHANGES

#### Deleted

Black Midnight (19)

Blue Brilliant (22)

Khaki (52)

Raspberry (85)

White Frost (12)

#### Added

Black Onyx (41)

Lt. Blue Stellar (27)

Emerald Green (43)

Lt. Autumnwood (55)

White Summit (50)





## S/T PICKUP EQUIPMENT SUMMARY

### STANDARD INTERIOR FEATURES

		BASE	YC3	YC5	*B4U	**ZR2
AIR BAG :	DRIVER SIDE	S	S	S	S	S
ASSIST HANDLE:	PASSENGER SIDE	S	S	S	S	S
DOOR BEAMS:	SIDE IMPACT	S	S	S	S	S
GLASS:	SOLAR RAY TINTED	S	S	S	S	S
GLOVE BOX:	NON-LOCKING, WITH DOOR-OPERATED LIGHT	S	S	S	S	S
HEADLINER:	FULL COVERAGE, FOAM-BACKED W/COLOR-KEYED CLOTH COVER	S	S	S	S	S
INSTRUMENTS:	FUEL LEVEL, ODOMETER, OIL PRESSURE, SPEEDOMETER, TEMPERATURE GAGE, TRIP ODOMETER AND VOLTMETER	S	S	S	S	S
INSULATION:	DASH PANEL, DOORS, CAB BACK, FLOOR AND HOOD, INSTRUMENT PANEL AND COWL/FENDER SEAL	S	S	S	S	S
LAMPS:	INTERIOR, DOOR-OPERATED DOME AND FRONT FLOOR COURTESY W/DELAYED ENTRY	S	S	S	S	S
LOCK SYSTEM:	SINGLE TWO-SIDED KEY	S	S	S	S	S
RADIO:	ETR AM/FM STEREO, WITH DIGITAL CLOCK	S	S	S	S	S
SUNSHADES:	PADDED, COLOR-KEYED CLOTH W/MAP STRAPS AND RH VANITY MIRROR DUAL PADDED, COLOR-KEYED W/SLIDER EXTENSIONS AND RH & LH ILLUMINATED VANITY MIRROR	S	--	--	--	--
TRAILERING:	WIRING HARNESS, 7-LEAD	S	S	S	S	S
WARNING TONE:	HEADLAMP-ON WARNING BUZZER	S	S	S	S	S
WINDOWS:	REAR QUARTER SWING-OUT (EXTENDED CAB ONLY)	--	S	S	--	S

### STANDARD EXTERIOR FEATURES

		BASE	YC3	YC5	*B4U	**ZR2
AIR DAM:	MATCHES BUMPER COLOR	S	S	S	S	S
BRACKET:	LICENSE PLATE, FRONT	S	S	S	S	S
ENGINE LAMP:	COMPARTMENT	S	S	S	S	S
LAMPS:	DAYTIME RUNNING	S	S	S	S	S
MIRROR:	OUTSIDE REARVIEW, LH AND RH, BELOW-EYE-LINE, BLACK	S	S	S	S	S
SPARE TIRE:	FULL SIZE, MOUNTED UNDER BED FULL SIZE, MOUNTED UNDER BED W/O Z08, COMPACT W/Z08	S	--	S	--	S
STEERING:	POWER	S	S	S	S	S
TIE DOWN:	LOAD, ANCHORS (4)	S	S	S	S	S
TOW HOOKS:	FRONT, T10 ONLY (2)	S	S	S	--	S
WIPERS:	INTERMITTENT (ADJUSTABLE)	S	S	S	S	S

### STANDARD CHASSIS FEATURES

		BASE	YC3	YC5	*B4U	**ZR2
ALTERNATOR:	100 AMPS	S	S	S	S	S
BATTERY:	525 COLD CRANKING AMPS	S	S	S	S	S
<b><u>BRAKES:</u></b>	<b><u>POWER ASSISTED, FRONT DISC, REAR DRUM WITH FOUR-WHEEL ANTI-LOCK BRAKING SYSTEM</u></b>	S	S	S	S	S
ENGINE:	S10: 2.2 LITER MFI <b><u>T10: VORTEC 4300 V6 SEI</u></b>	S	S	S	S	S
<b><u>FUEL TANK:</u></b>	<b><u>19 GALLON CAPACITY</u></b>	S	S	S	S	S
SUSP FRT:	S10 : INDEPENDENT COIL SPRINGS T10: INDEPENDENT TORSION BAR	S	S	S	S	S
SUSP REAR:	SEMI-FLOATING AXLE, 2-STAGE MULTI-LEAF SPRINGS	S	S	S	S	S
TRANSMISSION:	5-SPEED MANUAL W/OVERDRIVE	S	S	S	S	S

\*CS10603

\*\*CT106\*3

**BOLD, ITALICS AND UNDERLINED INDICATES NEW FOR '96**

SEE ADDITIONAL OPTIONS FOR B4U AND ZR2 CONTENT

REVISED: 1-29-96

1996 ORDER GUIDE

S/T PICKUP

Page 1

Prices Shown Are Manufacturers Suggested Retail Prices (MSRP) At The Time Of Publication. These Prices Are To Be Used Only As An Aid To Inventory Management Since MSRP Figures Change Periodically. The Vehicle Price Schedule Is The Official Pricing Documentation Of Chevrolet Motor Division And Should Be Used In Discussing Vehicle Prices With Potential Buyers. The Model Prices Shown In The Order Guide Include The Destination Freight Charges.

## S/T PICKUP TRIM DEFINITION & OPTION SUMMARY

### INTERIOR TRIM

		BASE	YC3	YC5	*B4U	**ZR2
COVERING:	BACK PANEL, CARPET	S	S	S	S	S
DOOR TRIM PANELS:	WLH & RH MOLDED MAP POCKETS					
	ONE-PIECE MOLDED PLASTIC W/INTEGRAL PADDED ARM RESTS	S	--	--	--	--
	MOLDED PLASTIC W/SOFT CLOTH UPPER INSERT W/INTEGRAL PADDED ARM RESTS	--	S	S	S	S
FLOOR COVERING:	VINYL, DARK GRAY, FULL FLOOR	S	--	--	--	--
	CARPETING, COLOR-KEYED, FULL FLOOR	--	S	S	S	S
MIRROR:	INTERIOR REARVIEW: DAY/NIGHT	S	S	S	S	S
MOLDING:	BODYSIDE, WHEEL OPENING	--	--	S	--	--
POWER POINTS:	DUAL COVERED:	--	S	S	S	S
SCOTCHGARD:	FABRIC PROTECTOR ON CLOTH TRIM AND DOOR PANELS	S	--	--	--	--
	FABRIC PROTECTOR ON CLOTH TRIM, DOOR PANELS AND CARPETING	--	S	S	S	S
SEATS:	CUSTOM VINYL BENCH W/FOLDING BACK, DUAL CUPHOLDERS	S	--	--	--	--
	REGULAR CAB: 60/40 CUSTOM CLOTH SPLIT BENCH WITH RECLINERS (INCLS ARMREST, STORAGE COMPARTMENT AND DUAL CUPHOLDERS)	--	S	S	S	S
	EXTENDED CAB: 60/40 CUSTOM CLOTH SPLIT BENCH WITH RECLINERS (INCLUDED ARMREST W/STORAGE COMPARTMENT, DUAL CUPHOLDERS AND PASSENGER SIDE EASY ENTRY FEATURE) (INCLS CUSTOM VINYL FOLDING REAR JUMP SEATS)	--	S	S	--	--
	RECLINING HIGH BACK BUCKET SEAT (INCLS CONSOLE AND ADJUSTABLE MANUAL LUMBAR SUPPORT)	--	--	--	--	S
STEERING WHEEL:	DELUXE 4-SPOKE, BLACK	S	S	S	--	S
	LEATHER WRAPPED	--	O	O	S	O

### EXTERIOR TRIM

		BASE	YC3	YC5	*B4U	**ZR2
BUMPERS:	FRONT & REAR STEP: DARK GRAY W/DARK GRAY END CAPS	S	--	--	--	--
	FRONT & REAR STEP, S10: COLOR-KEYED W/COLOR-KEYED END CAPS	--	S	--	O	--
	T10: DARK GRAY W/DARK GRAY END CAPS	--	S	--	--	S
	COLOR-KEYED (ALL)	--	--	S	--	--
	FRONT DARK GRAY W/DARK GRAY END CAPS AND REAR BUMPER DELETE (INCLS CLOSE-OUT PANEL)	O	--	--	S	--
GRILLE:	DARK GRAY W/HALOGEN HEADLAMPS	S	--	--	--	--
	CHROME W/HALOGEN HEADLAMPS	--	S	S	--	S
	BODY COLOR W/HALOGEN HEADLAMPS	--	--	--	S	--
NAMEPLATE	B PILLAR (LS) BADGE	--	S	S	S	S
<b><u>WHEELS:</u></b>	15 X 7 STEEL, PAINTED ARGENT W/BLACK CENTER CAP	S	--	--	--	--
	15 X 7 STEEL, PAINTED ARGENT W/TRIM RING AND BLACK CENTER CAP	--	S	--	--	S
	15 X 7 ALUMINUM, CAST	O	O	S	--	O
	<u>16 X 8 ALUMINUM, CAST (REQS ZQR SUSPENSION)</u>	--	--	--	S	--

\* CS10603

\*\*CT106\*3

**BOLD, ITALICS AND UNDERLINED INDICATES NEW FOR '96**

**S/T PICKUP**  
Page 2

**1996 ORDER GUIDE**

**REVISED: 1-29-96**

Prices Shown Are Manufacturers Suggested Retail Prices (MSRP) At The Time Of Publication. These Prices Are To Be Used Only As An Aid To Inventory Management Since MSRP Figures Change Periodically. The Vehicle Price Schedule Is The Official Pricing Documentation Of Chevrolet Motor Division And Should Be Used In Discussing Vehicle Prices With Potential Buyers. The Model Prices Shown In The Order Guide Include The Destination Freight Charges.

**S/T PICKUP**

**MODEL AND BODY**

Base	Description	Model No	Body
*11,755.00	Fleetside .....	CS10603	E63
*12,065.00	Fleetside .....	CS10803	E63

LS	Description	Model No	Body
*12,770.00	Fleetside .....	CS10603	E63
*13,065.00	Fleetside .....	CS10803	E63
*14,470.00	Fleetside Ext Cab .....	CS10653	E63
*13,170.00	Sportside .....	CS10603	E62
*14,870.00	Sportside Ext Cab .....	CS10653	E62

\*Includes Destination & Handling Charges

**EMISSIONS (Must Be Specified) (Refer Emission Requirements Section)**

- FE9** Federal Emission Requirements
- NG1** New York/Massachusetts Emission Requirements
- YF5** California Emission Requirements
- NB8** California or New York/Massachusetts Override (Requires FE9 Federal Emissions)
- NC7** Federal Emission Override (Requires YF5 California or NG1 New York/Massachusetts Emissions)

**SUSPENSION AND POWER TEAMS CHART**

**(MUST SPECIFY)**

**2-WHEEL DRIVE**

Required Options (Shaded Area)

MODELS	CS10603	CS10653	CS10603 CS10653 CS10803	CS10803	CS10603
<b>SUSPENSION</b>	Z83 (Smooth)		Z85 (Increased Capacity)		ZQ8 (Sport)
<b>CHARACTERISTICS</b>					
RIDE	Solid/Smooth		Firm		Performance
PRIMARY ROAD USE	Paved		Paved/Gravel		Paved
TRAILERING	Light-Duty		Heavy-Duty/Light-Duty		Light-Duty
GVW RATING	4200	4400	4600	4900	4200
GAWF/GAWR	2500/2300	2500/2300	2500/2700	2500/2700	2500/2300
<b>REQUIRED OPTIONS</b>					
GVWR	C5T	C3A	C5D	C5A	C5T
TIRES	QCA/QCE	QCA/QCE	QCA/QCE	QCA/QCE	QCB
ENGINE	LN2(a)	LN2(a)	LN2(a)		
TRANSMISSION	MW2 M30	MW2 M30	MW2 M30		
AXLE RATIO	GT4 GT5 (3.73) (4.10)	GT5 GT5 (4.10) (4.10)	GT4(d) GT5 (3.73) (4.10)		
			GT5(c) (4.10)		
ENGINE	LF6	LF6	LF6(b)	LF6	LF6
TRANSMISSION	M50 M30	M50 M30	M50 M30	M50 M30	M50 M30
AXLE RATIO	GU4 GU4(a) (3.08) (3.08)	GU4 GU4(a) (3.08) (3.08)	GU4 GU4(a) (3.08) (3.08)	GU4 GU4(a) (3.08) (3.08)	GU4 GU4(a) (3.08) (3.08)
	GU6 (3.42)	GU6 (3.42)	GU6 (3.42)	GU6 (3.42)	GU6 (3.42)
ENGINE	L35	L35	L35(b)	L35	L35
TRANSMISSION	M50 M30	M50 M30	M50 M30	M50 M30	M50 M30
AXLE RATIO	GU4(e) GU4(a) (3.08) (3.08)	GU4(e) GU4(a) (3.08) (3.08)	GU4(b,e) GU4(a) (3.08) (3.08)	GU4(e) GU4(a) (3.08) (3.08)	GU4(e) GU4(a) (3.08) (3.08)
	GU6 (3.42)	GU6 (3.42)	GU6 (3.42)	GU6 (3.42)	GU6 (3.42)

- (a) N/A G80 Locking Differential
- (b) N/A CS10803 w/C5D GVWR
- (c) N/A CS10603
- (d) N/A CS10653
- (e) Reqs G80

THE LOWEST NUMERICAL AXLE RATIO HAS BEEN ENGINEERED TO COVER THE WIDEST RANGE OF APPLICATIONS AND OFFER THE BEST FUEL ECONOMY

(Continued on Page 4)

REVISED: 1-29-96

1996 ORDER GUIDE

S/T PICKUP

Page 3

Prices Shown Are Manufacturer's Suggested Retail Prices (MSRP) At The Time Of Publication. These Prices Are To Be Used Only As An Aid To Inventory Management Since MSRP Figures Change Periodically. The Vehicle Price Schedule Is The Official Pricing Documentation Of Chevrolet Motor Division And Should Be Used In Discussing Vehicle Prices With Potential Buyers. The Model Prices Shown In The Order Guide Include The Destination Freight Charges.

**MODEL AND BODY**

Base	Description	Model No	Body	LS	Description	Model No	Body
*16,595.00	Fleetside .....	CT10603	E63	*17,600.00	Fleetside .....	CT10603	E63
*17,170.00	Fleetside .....	CT10803	E63	*18,165.00	Fleetside .....	CT10803	E63
				*19,100.00	Fleetside Ext Cab	CT10653	E63
				*18,000.00	Sportside .....	CT10603	E62
				*19,500.00	Sportside Ext Cab	CT10653	E62

\*Includes Destination & Handling Charges

**EMISSIONS (Must Be Specified) (Refer Emission Requirements Section)**

- FE9 Federal Emission Requirements
- NG1 New York/Massachusetts Emission Requirements
- YF5 California Emission Requirements
- NB8 California or New York/Massachusetts Override (Requires FE9 Federal Emissions)
- NC7 Federal Emission Override (Requires YF5 California or NG1 New York/Massachusetts Emissions)

**SUSPENSION AND POWER TEAMS CHART**

**(MUST SPECIFY)**

Required Options (Shaded Area)

**4-WHEEL DRIVE**

MODELS	CT10603 CT10653	CT10603 CT10803 CT10653	CT10603 CT10653	CT10603	CT10653
<b>SUSPENSION</b>	<b>Z83 (Smooth)</b>	<b>Z85 (Increased Capacity)</b>	<b>ZM6 (Off-Road)</b>	<b>ZR2 (Wide Stance)</b>	
<b>CHARACTERISTICS</b>					
RIDE	Solid	Firm	Very Firm	Firm	
PRIMARY ROAD USE	Paved/Gravel	Paved/Gravel	Gravel/ Unimproved	On/Off Road	
TRAILERING	Light-Duty	Light-Duty/Heavy-Duty	Light-Duty/Heavy-Duty	Light-Duty/Heavy-Duty	
GVW RATING	4650	5150	5150	4650	4900
GAWF/GAWR	2700/2300	2700/2700	2700/2700	2700/2300	2700/2700
<b>REQUIRED OPTIONS</b>					
GVWR	C5X	C6F	C6F	C5X	C5A
TIRES	QCA/QCE	QBF/QEB	QEB	QJJ	QJJ
ENGINE	LF6	LF6	LF6	LF6	LF6
TRANSMISSION	M50 M30	M50 M30	M50 M30	M50 M30	M50 M30
AXLE RATIO	GU4 (a) GU4 (a) (3.08) (3.08)	GU6 GU6 (3.42) (3.42)	GU6 GU6 (3.42) (3.42)	GT4 GT4 (3.73) (3.73)	GT4 GT4 (3.73) (3.73)
	GU6 GU6 (3.42) (3.42)	GT4 (3.73) (b)	GT4 (3.73) (b)		
ENGINE	L35 L35	L35	L35	L35	L35
TRANSMISSION	M50 M30	M50 M30	M50 M30	M50 M30	M50 M30
AXLE RATIO	GU6(b) GU4 (a) (3.42) (3.08)	GU6(b) GU6 (3.42) (3.42)	GU6(b) GU6 (3.42) (3.42)	GT4 GT4 (3.73) (3.73)	GT4 GT4 (3.73) (3.73)
	GU6 (3.42)	GT4(b) (3.73)	GT4(b) (3.75)		

- (a) N/A G80 Locking Differential
- (b) Reqs G80 Locking Differential

THE LOWEST NUMERICAL AXLE RATIO HAS BEEN ENGINEERED TO COVER THE WIDEST RANGE OF APPLICATIONS AND OFFER THE BEST FUEL ECONOMY

**MUST SPECIFY:**

**AXLE, EMISSION, ENGINE, PEG, SUSPENSION PACKAGE, TIRE AND TRANSMISSION**

No Deletions Allowed. Additional Options/Upgrades (Where Indicated) May be Ordered from the Additional Ordering Option Listing.

		BASE	LS			
		1 S A	1 S B	1 S C		
				S10	T10	
**(-281.00)	<b>Preferred Equipment Group (Regular Cab Only)</b>					
	Fleetside (A) ..... E63	x	x	x	x	
	Radio Delete (B) ..... UL5	x	N/A	N/A	N/A	
	Rear Step Bumper Delete (Incls Close Out Panel) (C) ..... ---	x	N/A	N/A	N/A	
	<b>Preferred Equipment Group</b>					
	LS Decor (D) ..... YC3		x	x	x	
*122.00	<b>Preferred Equipment Group</b>					
	Radio: ETR AM/FM Stereo w/Seek-Scan, Cassette Tape and Clock (E) ..... UM6			x	x	
*370.00	<b>S10 Bonus Value</b>					
**(-248.00)	w/PEG 1S and LN2 Eng					
	Wheels: Aluminum ..... N60			x	N/A	

\* The Preferred Equipment Group MSRP's Reflect the Basic Group Equipment Prices. For any Option Additions, Upgrades, or Substitutions. Refer to the Vehicle Price Schedule for any Price Differential.  
 \*\* PEG Savings Amount represents the savings for Preferred Equipment Groups.

**Allowable Substitutions (Where Available):**

- (A) E63: May substitute E62 w/1SB/1SC Pegs
- (B) UL5: May substitute UM7, UM6, UX1 (U1C Radio N/A w/1SA PEG)
- (C) Bumper Delete---: May substitute VF6 Rear Step Bumper
- (D) YC3: May substitute YC5 Exterior Appearance Package on C\*106\*3 Only
- (E) UM6: May substitute UX1 or U1C Radio

## ADDITIONAL OPTIONS

INCL. W/P.E.G. OPTION			
N.C.		R8S	<b>ACKNOWLEDGEMENTS:</b>
VPS		R8T	Multiple Order Numbers
805.00		C60	Preliminary Invoice
115.00		ANL	<b>AIR CONDITIONING</b>
			<b>AIR DAM WITH FOG LAMPS:</b> (S10 Only) (Incl w/B4U SS) (N/A 1SA)
N.C.		GU4	<b>AXLES, REAR:</b> (Refer Suspension and Power Teams Chart for Availability)
N.C.		GU6	3.08 Ratio
N.C.		GT4	3.42 Ratio
N.C.		GT5	3.73 Ratio
252.00		G80	4.10 Ratio (S10 Only)
56.00		UA1	Locking Differential (Incl w/B4U SS) (N/A LN2 Eng)
N.C.	A,B,C	E63	<b>BATTERY:</b> Heavy-Duty, 690 Cold Cranking AMPS (Incl w/V10 Cold Climate)
N.C.	B,C	E62	<b>BODY CODE:</b> (Refer Model and Body Section)
			Fleetside
			Sportside (CS106*3 Reqs YC3 Decor and ZY1 Paint;
			CT106*3 Reqs YC3 Decor, ZY1 Paint and ZM6/Z83/Z85 Suspension)
55.00		VF6	<b>BUMPER EQUIPMENT:</b>
			Rear Step (Standard w/LS Decor) (Available w/B4U SS or 1SA Only)
			(Vehicles registered in certain states must have a rear bumper to be operated on their roads.
			A close-out panel is not a bumper. Consult your local laws.)
89.00		V10	<b>COLD CLIMATE PACKAGE:</b> (Incls UA1 H.D. Battery and Engine Block Heater)
535.00		ZQ6	<b>CONVENIENCE GROUP:</b>
395.00		ZQ3	Power Door Locks, Windows and Exterior Electric Remote Mirrors (N/A 1SA)
			Tilt Steering and Speed Control
N.C.	A	---	<b>DECOR:</b> (Refer Standard Equipment for Package Content)
N.C.	B,C	YC3	Base (Incl w/1SA Only)
		YC5	LS: (N/A 1SA) (Incl w/B4U SS)
			LS w/Exterior Appearance Package (N/A C*10803) (N/A 1SA or w/ZR2 Suspension Package)
276.00			CS106*3
524.00			w/1SC and LN2
556.00			w/o 1SC and LN2
345.00		E24	CT106*3
N.C.		FE9	<b>EASY ACCESS SYSTEM:</b> Third Door (C*10653 Only) (Reqs E62/E63 Body Equipment)
N.C.		NG1	<b>EMISSIONS SYSTEMS:</b> (Refer Emission Requirement Tab Section)
N.C.		YF5	Federal Emission Requirements
N.C.		NB8	New York/Massachusetts Emission Requirements
N.C.		NC7	California Emission Requirements
			California or New York/Massachusetts Emission Override (Reqs FE9 Federal Emissions)
			Federal Emission Override (Reqs YF5 California or NG1 New York/Massachusetts Emissions)
N.C.		LN2	<b>ENGINES:</b> (Refer Suspension and Power Teams Chart for Availability)
990.00		LF6	2.2 Liter SFI L4 (S10 Only)
1,249.00		L35	Vortec 4300 V6 SFI (Incls Engine and Transmission Oil Coolers)
259.00			Vortec 4300 V6 SFI (Incls Engine, Transmission Oil Coolers and U16 Tachometer)
			CS10**3
			CT10**3
55.00		B30	<b>FLOOR COVERING:</b>
20.00		B32	Carpet (C*10*03 Only) (Reqs 1SA) (Incl w/YC3/YC5 on all Models)
		AJ1	Auxiliary Front Floor Mats (Reqs B30 Carpet on C*10*03 w/1SA) (N/A C*10653 w/1SA)
			<b>GLASS:</b> Deep Tinted
36.00			C*10*03
71.00			w/A28
			w/o A28
72.00			C*10653
107.00			w/A28
			w/o A28
N.C.		C5T	<b>GVWR: (MUST SPECIFY ONE)</b> (Refer Suspension and Power Teams Chart for Requirements)
		C3A	4200#
		C5D	4400#
N.C.		C5X	4600#
N.C.		C5A	4650#
N.C.		C6F	4900#
135.00		AU0	5150#
N.C.		ZY1	<b>LOCK:</b> Keyless Remote (Reqs 1SB/1SC and ZQ6 Convenience Group)
172.00		ZY7	<b>PAINT, EXTERIOR</b> (Refer Trim Chart for Availability)
			Solid
			Custom Two-Tone
226.00		UM7	<b>RADIO EQUIPMENT:</b>
			Electronically Tuned AM/FM Stereo Radio w/Seek-Scan and Digital Clock (Std on all but Base PEG)
			(Reqs PEG 1SA)
348.00	C	UM6	Electronically Tuned AM/FM Stereo Radio w/Seek-Scan, Stereo Cassette Tape and Digital Clock
122.00			w/PEG 1SA
N.C.	C	UX1	w/PEG 1SB
			w/PEG 1SC
			Electronically Tuned AM Stereo/FM Stereo Radio w/Seek-Scan, Stereo Cassette Tape with Search and
			Repeat Graphic Equalizer and Digital Clock
508.00			w/PEG 1SA
282.00			w/PEG 1SB
160.00			w/PEG 1SC
		U1C	Electronically Tuned AM/FM Stereo Radio w/Seek-Scan, Compact Disc Player and Digital Clock
			(Incls 4 Premium Speakers) (N/A 1SA)
406.00			w/PEG 1SB
284.00			w/PEG 1SC

## ADDITIONAL OPTIONS

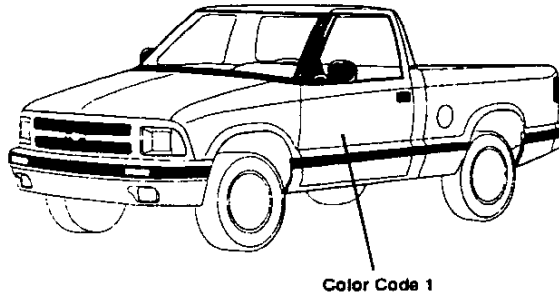
INCL.  
W/P.E.G. OPTION

	<b>SEAT OPTION: MUST SPECIFY (Refer Color and Trim Chart for Availability)</b>
A52	Bench Seat (Reqs 1SA)
AM6	60/40 Reclining Split Bench Seat (Reqs YC3/YC5) (N/A w/ZR2 Suspension Package)
AV5	Reclining High Back Bucket Seat (Incls Adjustable Manual Lumbar Support) CS10653 w/LN2 and MW2 (Excludes Console) C*10653 w/o MW2 (Incls Console) CS10*03 w/LN2 and MW2 (Excludes Console) C*10*03 w/o MW2 (Incls Console)
ZM5	<b>SHIELD PACKAGE: (T10 Only) (Incl w/ZR2 Suspension Package)</b>
B4U	<b>SS PACKAGE: (CS10603 Only) (Refer Standard Equipment Pages for Content) (Also Incls YC3 Decor, G80 Locking Differential, ANL Fog Lamps, N60 Cast Aluminum Wheels w/Special Bright Hub Caps, Body Color Grille, Rear Step Bumper Delete (Incls Close-Out Panel), Special SS Badging (Red "Bowtie" w/SS Emblem on doors and tailgate, Red "Bowtie" on grille and hubcaps, and Red "Chevrolet" badge on tailgate), NP5 Leather-Wrapped Steel Wheel, GU6 Axle Ratio) (Reqs L35 Eng, M30 Trans, and Colors 72 Red, 41 Black or 50 White)</b>
NP5	<b>STEERING WHEEL: Leather Wrapped (N/A 1SA) (Incl w/B4U SS)</b>
	<b>SUSPENSION PACKAGE: (Refer Suspension and Power Teams Chart)</b>
Z83	Solid Smooth Ride (N/A C*10803) CS10603/CT106*3 CS10653
Z85	Increased Capacity CS10653/C*10803 C*10603/CT10653
ZQ8	Sport (S10603 Only) (Reqs YC3 Decor) (Incls 16 x 8 Cast Aluminum Wheel) (N/A 1SA)
ZM6	Off-Road (Reqs CT106*3)
ZR2	<b>WIDE STANCE, SPORT PERFORMANCE (CT106*3 Only) (Refer Standard Equipment Pages for Content) (Also Incls Unique revised frame for wide tread. Front Tread (61.2") is 3.9" wider than standard. Rear Tread (59.1") is 3.9" wider than standard. Unique strengthened front differential gears and drive axles. Unique rear axle with 8.5" ring gear, larger wheel bearings and longer, larger diameter axle shafts. Unique rear suspension with revised multi-leaf springs and added rear axle track bar. Unique (28 mm vs 25 mm diameter) front stabilizer bar, 46 mm Bilstein gas pressurized shock absorbers. ZM5 Underbody Shields. Unique front fenders and pickup box outer panels with extra wide wheel flares. Modified jack and spare tire stowage winch. Body is 3" higher than standard (Refer Suspension Power Team Chart for GVWR) (Reqs YC3 Decor, GT4 Axle Ratio, AV5 Seats, LB4 or L35 Engine, QJJ Tires and ZY1 Solid Paint (See Paint Charts for color availability))</b>
U16	<b>TACHOMETER: (Incl w/L35 Eng)</b> <b>TIRES: (B/W: Blackwall, W/L: White Lettered, WOL: White Outline Lettered) (Incls Front, Rear and Spare)</b> <b>All-Seasons Steel Belted Radial Ply (Refer Suspension and Power Teams Chart for Availability and Requirements)</b>
QCE	P205/75R-15 B/W
QCA	P205/75R-15 W/L
QCB	P235/55R-16 B/W (CS10603 Only)
QBF	P235/70R-15 B/W CT10803 CS10603 or CT106*3
	<b>On-Off Road Steel Belted Radial Ply</b>
QEB	P235/75R-15 WOL (T10 Only) CT106*3 w/ZM6 CT10803 w/Z85 CT106*3 w/o ZM6
QJJ	31 x 10.5R-15 B/W (Incl w/ZR2 Suspension Package)
NP1	<b>TRANSFER CASE: Electronic Shift (T10 Only) (N/A 1SA)</b>
	<b>TRANSMISSIONS (Refer Suspension and Power Teams Chart for Availability)</b>
MW2	5-Speed Manual w/Overdrive, New Venture Gear (Reqs LN2 Engine)
M50	5-Speed Manual w/Overdrive, NVG (N/A LN2 Engine)
M30	4-Speed Electronically Controlled Automatic w/Overdrive (Incls Brake-Transmission Shift Interlock)
	<b>WHEELS: (Spare Wheel is Steel)</b>
N60	Aluminum, Argent (S10 Only) w/o 1SA (Incl w/1SC w/LN2 Eng) (Incl w/YC5 Decor) w/1SA
N90	Aluminum, Cast (T10 Only) (N/A 1SA) (Incl w/YC5 Decor)
5P2	Special Aluminum (T10 Only) w/o 1SA w/1SA
PA3	Aluminum, Bright w/Medium Gray Accent (T10 Only) (Reqs YC3 Decor Package)
A28	<b>WINDOW: Sliding Rear</b>



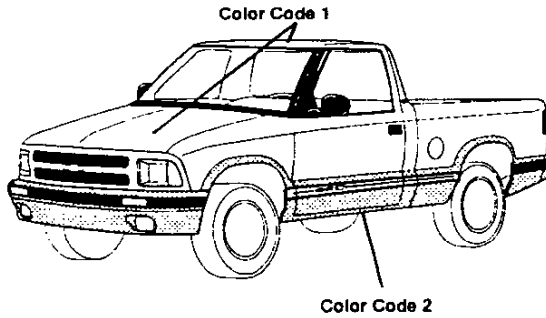
**S/T PICKUP  
Paint Applications**

**SOLID PAINT - ZY1**



**CUSTOM TWO-TONE PAINT - ZY7**

(Available w/YC3/YC5)



**S/T PICKUP**  
**INTERIOR AND EXTERIOR COLOR AVAILABILITY CHART**

**PLEASE NOTE:** Below are the interior trim color and exterior paint combinations recommended by Chevrolet. They are the only interior and exterior color combinations available.

**BASE DECOR**  
**ZY1 PAINT (N/A EXTENDED CAB OR YC3/YC5)**

TRIM LEVEL		Seat Option	INTERIOR COLORS			
Seat Type			Beige	Navy	Graphite	Gray
BASE INTERIOR		A52				13W
Custom Vinyl Bench Seat		A52	64D	26D	12D	13D
Custom Cloth Bench Seat		A52	64D	26D	12D	13D

EXTERIOR COLORS	Color Code	ZY CODE	RECOMMENDED INTERIOR TRIM COLORS			
AUTUMNWOOD, LT (MET)	55U	ZY1	x		x	x
BLACK, ONYX	41U	ZY1	x		x	x
BLUE, LT (MET)	27U	ZY1		x	x	x
GREEN, EMERALD (MET)	43U	ZY1	x		x	x
GREEN, TEAL (MET)	38U	ZY1	x		x	x
PURPLE (MET)	21U	ZY1			x	x
QUICKSILVER (MET)	96U	ZY1		x	x	x
RED, APPLE	72U	ZY1	x		x	x
RED, DK CHERRY (MET)	94U	ZY1	x		x	x
WHITE, SUMMIT	50U	ZY1	x	x	x	x

## S/T PICKUP INTERIOR AND EXTERIOR COLOR AVAILABILITY CHART

PLEASE NOTE: Below are the interior trim color and exterior paint combinations recommended by Chevrolet. They are the only interior and exterior color combinations available.

### ZY1 PAINT WITHOUT B4U

TRIM LEVEL		Seat Option	INTERIOR COLORS			
Seat Type			Beige	Navy	Graphite	Gray
LS						
Deluxe Cloth Recining Split Bench Seat		AM6	64H	26H	12H	13H
Deluxe Cloth Recining High Back Bucket Seat		AV5	64H	26H	12H	13H

EXTERIOR COLORS	Color Code	ZY CODE	RECOMMENDED INTERIOR TRIM COLORS			
AUTUMNWOOD, LT (MET)	55U	ZY1	x		x	
BLACK, ONYX	41U	ZY1	x		x	x
BLUE, LT (MET)	27U	ZY1		x	x	x
GREEN, EMERALD (MET)	43U	ZY1	x		x	x
GREEN, TEAL (MET)	38U	ZY1	x		x	x
PURPLE (MET)	21U	ZY1			x	x
QUICKSILVER (MET)	96U	ZY1		x	x	x
RED, APPLE	72U	ZY1	x		x	x
RED, DK CHERRY (MET)	94U	ZY1	x		x	x
WHITE, SUMMIT	50U	ZY1	x	x	x	x

\*N/A ZR2

### ZY1 PAINT WITH B4U

EXTERIOR COLORS	Color Code	ZY CODE	RECOMMENDED INTERIOR TRIM COLORS			
BLACK, ONYX	41U	ZY1	x		x	x
RED, APPLE	72U	ZY1	x		x	x
WHITE, SUMMIT	50U	ZY1	x	x	x	x

### ZY7 PAINT (REQS YC3)

TRIM LEVEL		Seat Option	INTERIOR COLORS			
Seat Type			Beige	Navy	Graphite	Gray
LS Decor						
Deluxe Cloth Recining Split Bench Seat		AM6	64H	26H	12H	13H
Deluxe Cloth Recining High Back Bucket Seats		AV5	64H	26H	12H	13H

EXTERIOR COLORS	Color Code 1	Color Code 2	ZY CODE	RECOMMENDED INTERIOR TRIM COLORS			
AUTUMNWOOD, LT (MET);BLACK, ONYX	55U	41L	ZY7	x			
BLACK, ONYX/AUTUMNWOOD, LT (MET)	41U	55L	ZY7	x		x	
BLACK, ONYX/GREEN, TEAL (MET)	41U	38L	ZY7	x		x	x
BLACK, ONYX/QUICKSILVER (MET)	41U	96L	ZY7			x	x
BLACK, ONYX/RED, DK CHERRY (MET)	41U	94L	ZY7	x		x	x
BLUE, LT (MET)/QUICKSILVER (MET)	27U	96L	ZY7		x	x	x
GREEN, EMERALD (MET)/AUTUMNWOOD, LT (MET)	43U	55L	ZY7	x			
GREEN, EMERALD (MET)/QUICKSILVER (MET)	43U	96L	ZY7			x	x
GREEN, TEAL (MET)/AUTUMNWOOD, LT (MET)	38U	55L	ZY7	x			
GREEN, TEAL (MET)/QUICKSILVER (MET)	38U	96L	ZY7			x	x
PURPLE (MET)/QUICKSILVER (MET)	21U	96L	ZY7			x	x
QUICKSILVER (MET);BLACK, ONYX	96U	41L	ZY7			x	x
QUICKSILVER (MET);GREEN, EMERALD (MET)	96U	43L	ZY7				x
QUICKSILVER (MET);GREEN, TEAL (MET)	96U	38L	ZY7			x	x
QUICKSILVER (MET);PURPLE (MET)	96U	21L	ZY7				x
QUICKSILVER (MET);RED, DK CHERRY (MET)	96U	94L	ZY7			x	x
RED, APPLE/AUTUMNWOOD, LT (MET)	72U	55L	ZY7	x			
RED, APPLE/BLACK, ONYX	72U	41L	ZY7	x		x	x
RED, APPLE/QUICKSILVER (MET)	72U	96L	ZY7			x	x
RED, DK CHERRY (MET)/AUTUMNWOOD, LT (MET)	94U	55L	ZY7	x			
RED, DK CHERRY (MET);BLACK, ONYX	94U	41L	ZY7			x	x
RED, DK CHERRY (MET);QUICKSILVER (MET)	94U	96L	ZY7			x	x
WHITE, SUMMIT/AUTUMNWOOD, LT (MET)	50U	55L	ZY7	x			
WHITE, SUMMIT/QUICKSILVER (MET)	50U	96L	ZY7				x

\*N/A ZR2

## S/T PICKUP INTERIOR AND EXTERIOR COLOR AVAILABILITY CHART

**PLEASE NOTE:** Below are the interior trim color and exterior paint combinations recommended by Chevrolet. They are the only interior and exterior color combinations available.

### ZY7 PAINT (REQS YC5)

TRIM LEVEL			Seat Option	INTERIOR COLORS			
Seat Type				Beige	Navy	Graphite	Gray
LS DECOR W/EXT APPEARANCE PACKAGE			AM6	64H	26H	12H	13H
Deluxe Cloth Reclining Split Bench Seat			AM6	64H	26H	12H	13H
Deluxe Cloth Reclining High Back Bucket Seats			AV5	64H	26H	12H	13H

EXTERIOR COLORS	Color Code 1	Color Code 2	ZY CODE	RECOMMENDED INTERIOR TRIM COLORS			
AUTUMNWOOD, LT (MET)/BLACK, ONYX	55U	41L	ZY7	x		x	
BLACK, ONYX/AUTUMNWOOD, LT (MET)	41U	55L	ZY7	x		x	
BLACK, ONYX/GREEN, TEAL (MET)	41U	38L	ZY7	x		x	x
BLACK, ONYX/QUICKSILVER (MET)	41U	96L	ZY7			x	x
BLACK, ONYX/RED, DK CHERRY (MET)	41U	94L	ZY7	x		x	x
BLUE, LT (MET)/QUICKSILVER (MET)	27U	96L	ZY7		x	x	x
GREEN, EMERALD (MET)/AUTUMNWOOD, LT (MET)	43U	55L	ZY7	x			
GREEN, EMERALD (MET)/QUICKSILVER (MET)	43U	96L	ZY7			x	x
GREEN, TEAL (MET)/AUTUMNWOOD, LT (MET)	38U	55L	ZY7	x			
GREEN, TEAL (MET)/QUICKSILVER (MET)	38U	96L	ZY7			x	x
PURPLE (MET)/QUICKSILVER (MET)	21U	96L	ZY7			x	x
QUICKSILVER (MET)/BLACK, ONYX	96U	41L	ZY7			x	x
QUICKSILVER (MET)/GREEN, EMERALD (MET)	96U	43L	ZY7				x
QUICKSILVER (MET)/GREEN, TEAL (MET)	96U	38L	ZY7			x	x
QUICKSILVER (MET)/PURPLE (MET)	96U	21L	ZY7				x
QUICKSILVER (MET)/RED, DK CHERRY (MET)	96U	94L	ZY7			x	x
RED, APPLE/AUTUMNWOOD, LT (MET)	72U	55L	ZY7	x			
RED, APPLE/BLACK, ONYX	72U	41L	ZY7	x		x	x
RED, APPLE/QUICKSILVER (MET)	72U	96L	ZY7			x	x
RED, DK CHERRY (MET)/AUTUMNWOOD, LT (MET)	94U	55L	ZY7	x			
RED, DK CHERRY (MET)/BLACK, ONYX	94U	41L	ZY7	x		x	x
RED, DK CHERRY (MET)/QUICKSILVER (MET)	94U	96L	ZY7			x	x
WHITE, SUMMIT/AUTUMNWOOD, LT (MET)	50U	55L	ZY7	x			
WHITE, SUMMIT/QUICKSILVER (MET)	50U	96L	ZY7				x

\*N/A ZR2

---

# NOTES

# S-SERIES PICKUP INTRODUCTION

## S-SERIES PICKUP

The 1996 Chevrolet S-Series Pickup is available in both regular and extended-cab versions, in two-wheel or four-wheel drive configurations. The S-Series Pickup is available in two trim levels: the "Standard" trim and the luxury-level "LS" trim.

Changes on the S-Series Pickup for 1996 include:

- A new Sportside Pickup Box with Stepside Design (E62)—Interim availability
  - An Extended-Cab Side Access Panel (E24)—Interim availability
  - 2.2L I4 (LN2) Engine enhancements, includes sequential fuel injection
  - Vortec 4300 V6 (L35) Engine. Replaces 4.3L (L35) and includes sequential fuel injection
  - Vortec 4300 V6 (LF6) Engine. Replaces 4.3L (LB4) and includes sequential fuel injection
  - On Board Diagnostics (OBD II) on all engines
  - A new 5-Speed manual transmission (MW2) on models with 2.2L I4 (LN2) engine
  - 4L60-E (M30) automatic transmission enhancements
  - Aluminized Stainless Steel Exhaust System
  - A new starter motor for the Vortec 4300 V6 (L35) engine
  - A new Sport Chassis Package (ZQ8) available on S10603 models
  - New Cast Aluminum Wheel (N96)
  - New Bright Aluminum Wheel (PA3)
  - Brake/Transmission Shift Interlock with automatic transmission
  - 4-Wheel Anti-lock Brakes now standard on all models
  - A new tethered fuel cap on all models
  - New DEX-COOL™ Extended-Life Engine Coolant with all engines. This new coolant extends the coolant change interval to 5 years/100,000 miles and is colored fluorescent orange
  - One new Interior Color
  - Five new Exterior Colors
-



# S-SERIES PICKUP

## MODEL SELECTION SUMMARY

Use the chart below to choose the model that fits your customer's needs. Please note that the Base Payloads shown reflect the maximum allowable weight of cargo that can be carried in a standard model, including occupants. (They are calculated by subtracting curb weight from the GVWR.) To calculate payloads for models with optional equipment, please refer to the WEIGHTS section in the back of this book or consult your 1996 GM PROSPEC. Also, the Maximum Trailer Weights shown below are based on vehicles that are properly equipped. See your Chevrolet Truck Order Guide for specific details.

SERIES	MODEL NUMBER/ BODY CODE/ OPTION CODE	PASSENGER CAPACITY (STD./OPT.)	STANDARD ENGINE/ TRANS.	OPTIONAL ENGINE/ TRANS.	GVWR (LB)	GAWR (LB) FRONT/ REAR	BASE PAYLOAD (LB)	MAXIMUM TRAILER WT./ TONGUE LOAD (LB) PROPERLY EQUIPPED
<b>TWO-WHEEL-DRIVE MODELS</b>								
<b>S-SERIES 4x2 REGULAR-CAB PICKUPS</b>								
S-SERIES SHORT-BOX	CS 10603/E63 Z83/QCE/QCA OR ZQ8/QCB	3/2	2.2L L4/M5	2.2L L4/A4 4300 V6/M5/A4	4200	2500/2300	1130	2000/200 6000/750
S-SERIES SHORT- BOX W/OPT. CHASSIS PACKAGE	CS 10603/E63 Z85/QCE/QCA	3/2	2.2L L4/M5	2.2L L4/A4 4300 V6/M5/A4	4600	2500/2700		2000/200 6000/750
S-SERIES LONG-BOX	CS 10803/E63 Z85/QCE/QCA	3/2	2.2L L4/M5	2.2L L4/A4	4600	2500/2300	1499	2000/200
S-SERIES LONG-BOX	CS 10803/E63 Z85/QCE/QCA	3/2	4300 V6/M5	4300 V6/A4	4900	2500/2700		6000/750
<b>S-SERIES 4x2 EXTENDED-CAB PICKUPS</b>								
S-SERIES EXTENDED CAB SHORT-BOX	CS 10653/E63 Z83/QCE/QCA	5/4	2.2L L4/M5	— 4300 V6/M5/A4	4400	2500/2300	1154	2000/200 6000/750
S-SERIES EXTENDED CAB SHORT-BOX	CS 10653/E63 Z85/QCE/QCA	5/4	2.2L L4/M5	2.2L L4/A4 4300 V6/M5/A4	4600	2500/2700		2000/200 6000/750
<b>FOUR-WHEEL-DRIVE MODELS</b>								
<b>S-SERIES 4x4 REGULAR-CAB PICKUPS</b>								
S-SERIES SHORT-BOX	CT 10603/E63 Z83/QCE/QCA or ZR2/QJJ	3/2	4300 V6/M5	4300 V6/A4	4650	2700/2300	1161	5500/650 <sup>2</sup>
S-SERIES SHORT-BOX W/OPT. CHASSIS PACKAGE	CT 10603/E63 ZM6/QEB or Z85/QEB/QBF	3/2	4300 V6/M5	4300 V6/A4	5150	2700/2700		5500/650
S-SERIES LONG-BOX	CT 10803/E63 Z85/QEB/QBF	3/2	4300 V6/M5	4300 V6/A4	5150	2700/2700	1312	5500/650
<b>S-SERIES 4x4 EXTENDED-CAB PICKUPS</b>								
S-SERIES EXTENDED- CAB SHORT-BOX	CT 10653/E63 Z83/QCA/QCE	5/4	4300 V6/M5	4300 V6/A4	4650	2700/2300	1195	5500/650
S-SERIES EXTENDED- CAB SHORT-BOX W/OPT. CHASSIS PACKAGE	CT 10653/E63/ ZR2/QJJ	5/4	4300 V6/M5	4300 V6/A4	4900	2700/2700		2000/200
S-SERIES EXTENDED- CAB SHORT-BOX W/OPT. CHASSIS PACKAGE	CT 10653/E63/ Z85/QBF/QEB	5/4	4300 V6/M5	4300 V6/A4	5150	2700/2700		5500/650
S-SERIES EXTENDED- CAB SHORT-BOX W/OPT. CHASSIS PACKAGE	CT 10653/E63/ ZM6/QEB	5/4	4300 V6/M5	4300 V6/A4	5150	2700/2700		5500/650

<sup>1</sup> ZQ8 requires Vortec 4300 V6 engine and M50 transmission.

<sup>2</sup> 4WD models with ZR2 Suspension Package are limited to 2000 lb Trailer Rating.

<sup>3</sup> Please refer to the Weight section at the back of the Tech Guide to determine the optional payloads.



# S-SERIES PICKUP INTRODUCTION

## S-SERIES PICKUP

The 1996 Chevrolet S-Series Pickup is available in both regular and extended-cab versions, in two-wheel or four-wheel drive configurations. The S-Series Pickup is available in two trim levels: the "Standard" trim and the luxury-level "LS" trim.

Changes on the S-Series Pickup for 1996 include:

- A new Sportside Pickup Box with Stepside Design (E62)—Interim availability
- An Extended-Cab Side Access Panel (E24)—Interim availability
- 2.2L L4 (LN2) Engine enhancements, includes sequential fuel injection
- Vortec 4300 V6 (L35) Engine. Replaces 4.3L (L35) and includes sequential fuel injection
- Vortec 4300 V6 (LF6) Engine. Replaces 4.3L (LB4) and includes sequential fuel injection
- On Board Diagnostics (OBD II) on all engines
- A new 5-Speed manual transmission (MW2) on models with 2.2L L4 (LN2) engine
- 4L60-E (M30) automatic transmission enhancements
- Aluminized Stainless Steel Exhaust System
- A new starter motor for the Vortec 4300 V6 (L35) engine
- A new Sport Chassis Package (ZQ8) available on S10603 models
- New Cast Aluminum Wheel (N96)
- New Bright Aluminum Wheel (PA3)
- Brake/Transmission Shift Interlock with automatic transmission
- 4-Wheel Anti-lock Brakes now standard on all models
- A new tethered fuel cap on all models
- New DEX-COOL™ Extended-Life Engine Coolant with all engines. This new coolant extends the coolant change interval to 5 years/100,000 miles and is colored fluorescent orange
- One new Interior Color
- Five new Exterior Colors

# S-SERIES PICKUP

## POWERTRAINS

Chevrolet offers a variety of engines, transmissions and axle ratios for the S-Series Pickup. The following charts detail basic engine, transmission and axle specifications. See your 1996 Chevrolet Truck Order Guide for specific details.

ENGINES					
	2.2L L4	VORTEC 4300 V6		VORTEC 4300 V6	
	LN2	LF6		L35	
Engine Order Code	LN2	LF6		L35	
Availability	S-10 4x2 only	4x2	4x4	4x2	4x4
SAE Net Horsepower @ rpm	118 @ 5200	175 @ 4400	180 @ 4400	180 @ 4400	190 @ 4400
SAE Net Torque lb-ft @ rpm	130 @ 2800	240 @ 2800	240 @ 2800	245 @ 2800	250 @ 2800
Fuel System	SFI	SFI		SFI	
Clutch Size in. (mm)	9.13 (232 mm)	11.02 (280 mm)		11.02 (280 mm)	
Standard Battery Cold Cranking Amps @ 0° F	525	525		525	
Standard Alternator Max. Cap. (Amps)	100	100		100	

TRANSMISSIONS			
	MANUAL		AUTOMATIC
	MANUAL 5-SPEED W/OVERDRIVE	MANUAL 5-SPEED W/OVERDRIVE	ELECTRONIC AUTOMATIC 4-SPEED OVERDRIVE W/TORQUE CONVERTER CLUTCH (4L60-E)
Transmission Order Code	MW2	M50	M30
Engine Application (Order Code)	2.2L L4 (LN2)	4300 V6 (LF6/L35)	2.2L L4/4300 V6 (LN2/LF6/L35)
Synchronized Speeds	1/2/3/4/5	1/2/3/4/5	—
Gear Ratios			
First	3.94	3.49	3.06
Second	2.37	2.16	1.63
Third	1.49	1.40	1.00
Fourth	1.00	1.00	0.70
Fifth	0.83	0.78	—
Reverse	3.54	3.55	2.29
Shaft Center Distance (mm)	76	85	—

AXLES							
	REAR AXLE				FRONT AXLE (4X4 ONLY)		
Make	GM				GM		
Capacity (lb)	2900				2700		
Pinion and Ring Gear Type	Hypoid				Hypoid		
Engine Availability	4300 V6	4300 V6	2.2L L4/4300 V6	2.2L L4	4300 V6		
Axle Ratio Code	GU4	GU6	GT4	GT5	GU4	GU6	GT4
Ratio	3.08	3.42	3.73	4.10	3.08	3.42	3.73
Pinion Teeth	13	12	11	10	13	12	11
Ring Gear Teeth	40	41	41	41	40	41	41
Ring Gear Diameter (in.)	7.62 <sup>2</sup>	7.62 <sup>2</sup>	7.62 <sup>1</sup>	7.62	7.25	7.25	7.25

Note: Axle Ratio availability depends on model, powertrain and emissions selected. See your 1996 Chevrolet Truck Order Guide for details.

<sup>1</sup>ZR2 Wide Stance uses 8.5 in. -ring gear diameter.

<sup>2</sup>L35 w/M50 transmission uses 8.5 in. -ring.

---

---

# S-SERIES PICKUP

## TRIM LEVELS

Chevrolet offers S-Series Pickup Regular-Cab in two trim levels: "Standard" and "LS." The "LS" trim level is standard on Extended-Cab models. The following chart details major standard features. See your 1996 Chevrolet Truck Order Guide for specific details.

CHASSIS EQUIPMENT		STANDARD (BASE) REG.-CAB ONLY	LS (YC3)
<b>KEY: ■ = STANDARD, — = NOT INCLUDED</b>			
<b>BRAKES</b>	Power-assisted; front disc, rear drum with four-wheel anti-lock system. Includes brake/transmission shift interlock with automatic transmission.	■	■
<b>EXHAUST</b>	Aluminized stainless steel exhaust system.	■	■
<b>FRAME</b>	All-welded ladder-type, channel design and boxed front-end section.	■	■
<b>FUEL TANK</b>	19 gallon (approx.) capacity.	■	■
<b>REAR AXLE</b>	Hypoid, semi-floating.	■	■
<b>SHOCK ABSORBERS</b>	Front: 32mm; Rear: 32mm. 46mm Front and Rear with ZM6, ZQ8 and ZR2 Chassis Package.	■	■
<b>STABILIZER BAR</b>	Front: 25mm with Z83 and ZM6 Chassis Package. Front: 28mm with Z85 (4WD) and ZR2 Chassis Package. Front: 29mm with Z85 (2WD). Front: 33mm with ZQ8 Chassis Package. Rear: 22mm with ZQ8 Chassis Package.	■ ■ ■ ■ ■	■ ■ ■ ■ ■
<b>STEERING</b>	Integral power. (Variable ratio, 15/13:1 on ZQ8.)	■	■
<b>SUSPENSION, FRONT</b>	4x2: Independent with computer-selected coil springs. 4x4: Independent with computer-selected torsion bars.	■ ■	■ ■
<b>SUSPENSION, REAR</b>	Two-stage semi-elliptic multileaf springs.	■	■
<b>TOW HOOKS</b>	Two front-mounted on 4x4 only.	■	■
EXTERIOR EQUIPMENT			
<b>AIR DAM</b>	Matches bumper color.	■	■
<b>BUMPERS, FRONT AND REAR-STEP</b>	Dark gray with dark gray end caps. Color-keyed with color-keyed end caps on 2WD models. Dark gray with dark gray end caps on 4WD models.	■ —	— ■
<b>GLASS</b>	Tinted Solar-Ray®.	■	■
<b>GRILLE</b>	Dark gray. Chrome and dark gray. Bright deluxe front application package.	■ —	— ■
<b>HEADLAMPS</b>	Single rectangular halogen. Sealed beam.	■	■
<b>HORN</b>	Dual note.	■	■
<b>INSULATION</b>	Underhood.	■	■
<b>LAMPS</b>	Engine compartment and center high-mounted stop lamp.	■	■
<b>LICENSE PLATE</b>	Front bracket.	■	■
<b>MIRRORS</b>	Black RH and LH below-eye-line type. Head size 5.5" x 7.5".	■	■
<b>MOLDING</b>	Black windshield surround.	■	■
<b>PICKUP BOX</b>	Two-tier loading with cargo tie-down loops in each corner.	■	■
<b>RUNNING LAMPS</b>	Daytime.	■	■
<b>SPARE TIRE AND WHEEL</b>	Full-size spare tire and wheel mounted under bed. (Temporary spare with ZQ8.)	■	■
<b>SPARE TIRE CARRIER</b>	Winch-type carrier mounted under frame at rear.	■	■
<b>TIRES</b>	P205/75R15 BW all-season steel-belted radials. (P235/55R16 with ZQ8.)	■	■
<b>WHEELS</b>	15.0" x 7.0" steel painted argent with black center cap (2-wheel-drive model). 15.0" x 7.0" steel painted argent with black center cap and trim rings (2-wheel-drive model). 15.0" x 7.0" steel painted argent with black center cap and trim ring (4-wheel-drive model). (16.0" x 8.0" aluminum wheels with ZQ8.)	■ — ■ ■	— ■ ■ ■
<b>WINDSHIELD WIPERS</b>	Intermittent.	■	■
<b>WIRING</b>	7-lead wiring harness for trailering purposes.	■	■
INTERIOR EQUIPMENT			
<b>AIR BAG</b>	Driver's.	■	■
<b>ARMRESTS</b>	RH and LH padded integral with door panels.	■	■
<b>CAB BACK PANELS</b>	Carpeted. Includes Scotchgard™ Protector.	■	■
<b>CIGARETTE LIGHTER</b>	Located on instrument panel. Includes ashtray light. Located on instrument panel. Includes ashtray light and two auxiliary power outlets.	■ —	— ■
<b>COAT HOOKS</b>	RH and LH on Regular-Cab models. Foldaway on Extended-Cab models.	■	■
<b>CUPHOLDERS</b>	Two mounted to seat cushion.	■	■
<b>DOVE LAMP</b>	Door-operated with front floor courtesy lamp.	■	■
<b>DOOR SILL PLATE</b>	Black.	■	■
<b>DOORS</b>	Side door guard beams.	■	■
<b>DOOR PANELS</b>	One-piece molded plastic with padded integral armrests. LH and RH molded map pockets. Molded plastic with soft cloth upper insert, padded integral armrests. LH and RH molded map pockets.	■ —	— ■
<b>FLOOR COVERING</b>	Embossed dark gray full floor vinyl mat. Color-keyed full floor carpeting with Scotchgard™ Protector.	■ —	— ■



# S-SERIES PICKUP

INTERIOR EQUIPMENT (CONT.)		STANDARD (BASE) REG. CAB ONLY	LS (YC3)
KEY: ■ = STANDARD, — = NOT INCLUDED			
GAGES	Including voltmeter, oil pressure and engine temperature gages, fuel gage, trip odometer and speedometer, warning lights for seat belts, parking brake, direction/hazard signals and high beam.	■	■
GLOVE BOX	Locking with door-activated light and cupholders.	■	■
GRAB HANDLE	Passenger side.	■	■
HEADLAMP WARNING BUZZER	Headlamps on.	■	■
HEATER	Outside air with windshield and side window defoggers.	■	■
HEADLINER	Full coverage, foam-backed with color-keyed cloth cover.	■	■
INSULATION	Provided on dash panel, doors, cab back, floor and hood, instrument panel and cowl-to-fender seals.	■	■
MIRRORS	10-inch rearview. 10-inch rearview mirror with dual reading lamps and illuminated entry feature.	■	■
RADIO	ETR AM/FM stereo with digital clock, two 4" x 6" diameter front dash speakers and two 6" diameter door speakers, two 6" diameter door speakers and two 4" x 10" speakers located in the rear quarter panel trim on Extended-Cab.	■	■
SEATS	3-passenger Custom Vinyl front bench with folding backrest and head restraints with dual cupholders. 60/40 Deluxe Cloth split bench with recliners, includes armrests with storage compartment, Scotchgard™ Fabric Protector on all cloth seats. Extended-Cab models include armrest with storage compartment passenger-side easy-entry feature and rear vinyl folding jump seats.	■	■
STEERING WHEEL	Deluxe four-spoke, black.	■	■
STORAGE POCKET	In instrument panel under radio.	■	■
SUNSHADES	RH and LH padded, color-keyed cloth with map strap and RH vanity mirror. RH and LH padded, color-keyed cloth includes slider extensions and RH and LH illuminated vanity mirrors.	■	■
TOOLS	Mechanical jack and wheel wrench located in storage compartment on floor behind front seat. Cover includes drink holders on Extended-Cabs.	■	■
WINDOWS	Extended-Cab: Swing-out rear quarter windows.	—	■

## PREFERRED EQUIPMENT GROUPS

Preferred Equipment Groups (PEGs) are convenient option packages that can save your customers money. They would pay appreciably more by buying all the options in a Preferred Equipment Group as individual options. (Savings based on a comparison of Manufacturer's Suggested Retail Price of option packages versus MSRP of individual options purchased separately). See your 1996 Chevrolet Truck Order Guide and Vehicle Price Schedule for specific information and prices.

## OPTIONS

These options can be ordered individually in addition to the Preferred Equipment Groups, if not already included. See your 1996 Chevrolet Truck Order Guide for specific availability and restrictions. The Option Code is listed in **bold**.

Air Conditioning .....	<b>C60</b>	Emissions Systems:		Lock, Remote Keyless Entry System .....	<b>AU0</b>
Air Dam w/Fog Lamps (4x2 only) .....	<b>ANL</b>	California .....	<b>YF5</b>	Paint, Exterior:	
Axle, Rear:		Federal .....	<b>FE9</b>	Solid .....	<b>ZY1</b>
3.08 Ratio .....	<b>GU4</b>	Massachusetts/New York .....	<b>NG1</b>	Custom Two-Tone .....	<b>ZY7</b>
3.42 Ratio .....	<b>GU6</b>	Federal Emissions Override .....	<b>NC7</b>	Radio Equipment:	
3.73 Ratio .....	<b>GT5</b>	Cal./Mass./N.Y. Emissions Override .....	<b>NB8</b>	Radio Delete	
4.10 Ratio (S-Series only) .....	<b>GT5</b>	Engines:		(Available with PEG 1SG only) .....	<b>UL5</b>
Locking Differential .....	<b>G80</b>	2.2L SFI .....	<b>LN2</b>	ETR AM/FM Stereo w/Seek-Scan,	
Battery, Heavy Duty (690 CCA) .....	<b>UA1</b>	Vortec 4300 V6 SFI .....	<b>LF6</b>	and Digital Clock (Requires	
Bumper, Rear Step (Available with B4U or		Vortec 4300 V6 SFI .....	<b>L35</b>	base PEG 1SG) .....	<b>UM7</b>
PEG 1SG only) .....	<b>VF6</b>	Exterior Appearance Package, (includes		ETR AM/FM Stereo Radio w/Seek-Scan,	
Chassis Packages:		front and rear color-keyed bumpers with		Stereo Cassette, Digital Clock and four	
Wide Stance, Sport Performance		color-keyed end caps, dark gray rub strips		speakers .....	<b>UM6</b>
(CT10603) (CT10653) .....	<b>ZR2</b>	and bright inserts. Also includes dark gray		ETR AM Stereo/FM Stereo Radio w/Seek-	
Increased Capacity .....	<b>ZB5</b>	bodyside moldings with bright insert and		Scan/Stereo Cassette w/Search/Repeat,	
Off Road. (T10603, CT10653 only) .....	<b>ZM6</b>	bright wheel opening moldings, cast		Graphic Equalizer/Digital Clock and four	
Solid/Smooth Ride,		aluminum wheels and "CHEVROLET"		speakers .....	<b>UX1</b>
(N/A CT10803 or CS10803) .....	<b>ZB3</b>	tailgate applique) .....	<b>YC5</b>	ETR AM/FM Stereo Radio w/Digital Clock,	
Sport, (S10603 only) .....	<b>ZQ8</b>	Floor Mats, front .....	<b>B32</b>	Seek-Scan, Compact Disc Player	
Cold Climate Package (includes Heavy-		GVWR Ratings:		and four speakers .....	<b>U1C</b>
Duty battery, engine block heater) .....	<b>V10</b>	4200 lb .....	<b>C5T</b>	Seat Options:	
Convenience Groups:		4400 lb .....	<b>C3A</b>	Bench Seat .....	<b>A52</b>
Tilt Steering and Speed control .....	<b>ZQ3</b>	4600 lb .....	<b>C5D</b>	60/40 Reclining Split Bench .....	<b>AM6</b>
Power door locks, power windows		4650 lb .....	<b>C5X</b>	Reclining High-Back Bucket Seats .....	<b>AV5</b>
and electric remote mirrors .....	<b>ZQ6</b>	4900 lb .....	<b>C5A</b>	Shield Package (4x4 only, includes transfer	
		5150 lb .....	<b>C6F</b>	case and front differential skid plates, fuel	
				tank and steering linkage shields) .....	<b>ZM5</b>



# S-SERIES PICKUP

## OPTIONS (CONT.)

*SS Sport Package, (CS10603 only) (Reqs L35 Engine and M30 Trans) (see Order Guide for detailed description) ..... B4U*  
*Steering Wheel, Leather Wrapped ..... NP5*  
*Tachometer, (Included with L35 Engine) ..... U16*  
*Transfer Case, Electronic Shift (4x4 only) .... NP1*

*Transmissions:*  
*5-speed manual overdrive NVG (Reqs. LN2) ..... MW2*  
*5-speed manual overdrive NVG (Reqs. LF6/L35) ..... M50*  
*Electronic automatic 4-speed overdrive (Includes brake/transmission shift interlock) ..... M30*

*Wheels:*  
*Aluminum, Argent (4x2 only) ..... N60*  
*Cast Aluminum (4x4 only) ..... N90*  
*Cast Aluminum (CS10603 only) ..... N96*  
*Special Aluminum (4x4 only) ..... 5P2*  
*Aluminum, Painted Medium Gray ..... PA3*  
*Window, Sliding Rear ..... A28*

### TIRES

**KEY: ALS = ALL-SEASON SBR = STEEL-BELTED RADIAL PLY BW = BLACKWALL WL = WHITE LETTERED  
 OOR = ON-OFF ROAD WOL = WHITE OUTLINE LETTERED**

TIRE DESCRIPTION		ORDERING CODE
P205/75R15 BW	ALS/SBR	QCE
P205/75R15 WOL	ALS/SBR	QCA
P235/55R-16 BW	ALS/SBR	QCB
P235/70R15 BW	ALS/SBR	QBF
P235/75R15 WOL	OOB/SBR	QEB
31 X 10.5R-15L BW	OOB/SBR	QJJ

### DIMENSIONS

MODEL	S-SERIES (REGULAR-CAB)	S-SERIES (REGULAR-CAB)	S-SERIES (EXTENDED-CAB)	S-SERIES (REGULAR-CAB)	S-SERIES (REGULAR-CAB)	S-SERIES (EXTENDED-CAB)
MODEL NUMBER	CS10603/E63	CS10803/E63	CS10653/E63	CT10603/E63	CT10803/E63	CT10653/E63

#### EXTERIOR DIMENSIONS

<b>BODY</b>						
Wheelbase (in.)	108.3	117.9	122.9	108.3	117.9	122.9
Overall Length (in.)	188.6	204.6	203.3	188.6	204.6	203.3
Overall Height (in.)	62.1	62.1	62.2	63.8	65.4	63.8
Maximum Width (in.)	67.9	67.9	67.9	67.9	67.9	67.9
Bumper to Axle (in.)						
Front (two license brackets)	34.5	34.5	34.5	34.5	34.5	34.5
Rear	45.9	52.2	45.9	45.9	52.2	45.9
Cab-to-Axle (in.)	37.4	47.1	37.4	37.4	47.1	37.4
Cab to End of Frame (in.)	73.1	89.0	73.1	73.1	89.0	73.1
Bumper to Back of Cab (in.)	105.3	105.3	119.9	105.3	105.3	119.9
Ground to Top of Rear Load Floor (in.)	27.5	28.3	28.1	28.5	29.5	28.2
Ground Clearance (in.)						
Front	9.2	8.8	9.2	8.6	10.6	8.6
Rear	7.2	6.8	7.2	7.5	8.0	7.5
Turning Diameter Curb-to-Curb (ft.)	36.9	39.8	41.3	37.3	40.2	41.6
<b>CARGO BOX</b>						
Length at Floor (in.)	72.8	88.6	72.8	72.8	88.6	72.8
Inside Width at Top Rear (in.)	54.6	54.6	54.6	54.6	54.6	54.6
Inside Width at Floor (in.)	56.6	56.6	56.6	56.6	56.6	56.6
Inside Width between Wheelhousings (in.)	39.4	39.4	39.4	39.4	39.4	39.4
Inside Height at Rear Axle (in.)	17.1	17.1	17.1	17.1	17.1	17.1
Tailgate Width (in.)	54.9	54.9	54.9	54.9	54.9	54.9
Cargo Volume (cu ft)	39.4	48.1	39.4	39.4	48.1	39.4
<b>SIGN PANEL AREA (in.)</b>	15 x 46.25	15 x 46.25	16 x 66.5	15 x 46.25	15 x 46.25	16 x 66.5

#### INTERIOR DIMENSIONS

<b>CAB</b>						
Headroom (in.)	39.5	39.5	39.6	39.5	39.5	39.6
Legroom (in.)	42.4	42.4	42.4	42.4	42.4	42.4
Shoulder Room (in.)	57.2	57.2	57.2	57.2	57.2	57.2
Hip Room (in.)	52.0	52.0	52.0	52.0	52.0	52.0
Cargo Volume (cu ft) (in-cab storage area)	—	—	17.3	—	—	17.3

\* 43.2 inches with seat in rearmost position.





...

