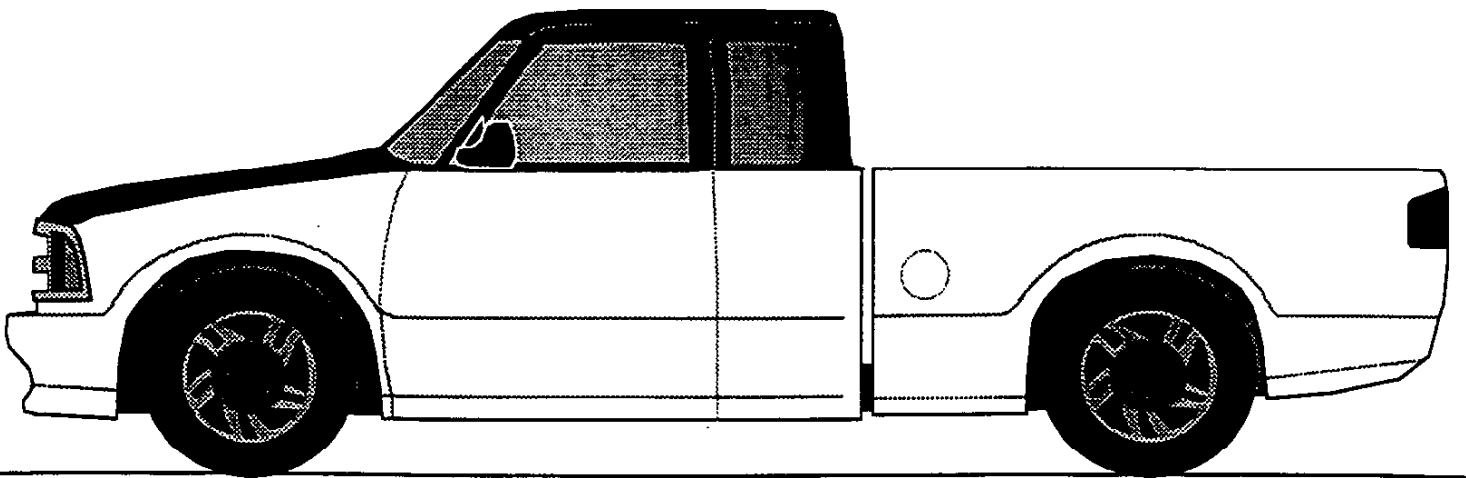




97

S-SERIES

PICKUP





S-Series Pickup

Dealer Order Guide inserts are your first look at Chevy Truck models for 1997. Overall improvements, changes and deletions are highlighted. Use these inserts to assist you in ordering your initial shipments. (NOTE: some information is preliminary and is subject to change.)

Positioning Statement

The personal-size pickup that delivers impressive performance with traditional Chevy value. This popular family of trucks has been intelligently designed from the inside out with the toughness and dependability you demand.

FOCUS

The Focus vehicle is the model chosen for its saleability. It is equipped with the product features that customers want most. Generally, it is the "volume" vehicle that comprises the majority of the build. You'll want to be sure you have several of these models in stock. NOTE: model, PEG and optional equipment may vary in your locality.

S-Series Extended-Cab LS Short-Box 2WD Pickup *(image above, top)*

Ordering Recommendations:
The recommended Focus vehicle is the 2WD S-Series Extended-Cab LS Short-Box Pickup. Content, based on national sales volume, is listed below to assist your dealership in ordering.

Some LS special features include:

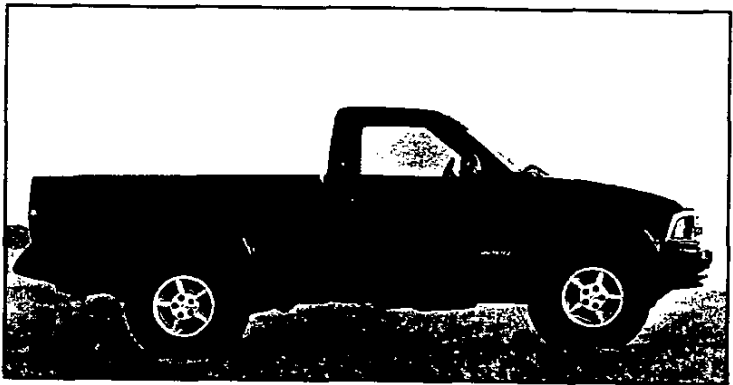
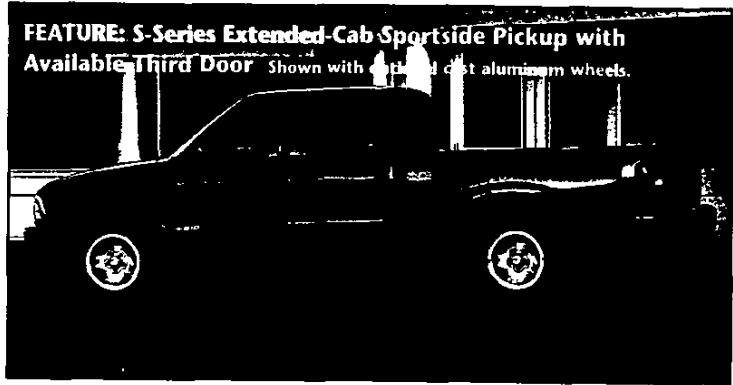
- Color-keyed carpeting
- Dual covered power points
- Rear-quarter swing-out windows (Extended-Cab only)
- Deluxe Cloth 60/40 split-bench seat with center armrest and storage compartment
- Deluxe 4-spoke steering wheel
- Chrome grille with halogen headlamps.

FEATURE

The Feature vehicle is the "image" model Chevy Truck will profile most in its advertising. Generally, it does the best job of capturing attention and creating consumer awareness.



FEATURE: S-Series Extended-Cab Sportside Pickup with Available Third Door Shown with optional cast aluminum wheels.



S-Series Extended-Cab Sportside Pickup with Available Third Door and 4x4 S-Series ZR2 Regular-Cab Pickup *(images above, center and bottom)*

There are two 1997 Feature vehicles for S-Series Pickup: Extended-Cab Sportside with available third door and 4x4 ZR2 Regular-Cab. Extended-Cab Sportside teams classic styling with functional convenience. The third door option adds still greater appeal. ZR2 is an off-roader with a wider track than S-Series street trucks, and stands nearly three inches taller. Serious off-roaders may choose from Regular-Cab and Extended-Cab models. Some ZR2 special features include:

- 3-inches-higher chassis than standard
- Broad track (3.9 inches wider)
- Front fenders and pickup box outer panels with extra-wide wheel flares
- Larger 1.4-inch front stabilizer bar.
- 46 mm Bilstein gas shocks
- 3.73:1 axle ratio
- Rear axle track bar
- Heavy-duty front and rear axle components
- 31 x 10.5 R-15 LT/C on-/off-road blackwall tires
- Underbody shield package.

'97

http://www.chevy.com

©1996 GM International Corp. 9610

Trim Colors



Custom Vinyl available in Gray.



Custom Cloth available in Beige, Navy, Graphite and Gray.



Deluxe Cloth available in Beige, Navy, Graphite and Gray.

S-Series Pickup

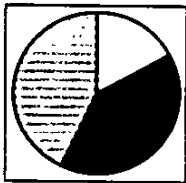
Most Popular Exterior Colors with Corresponding Interior Color Availability

INTERIOR MATERIAL COLORS

EXTERIOR COLORS	Beige	Navy	Graphite	Gray
Summit White	✓	✓	✓	✓
Dark Cherry Red Metallic	✓		✓	✓
Emerald Green Metallic	✓		✓	✓
Apple Red	✓		✓	✓

See Order Guide for color availability by model.

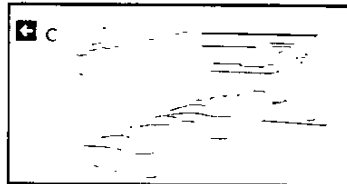
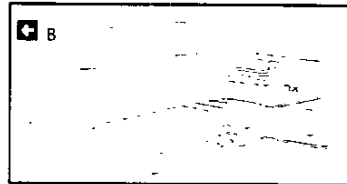
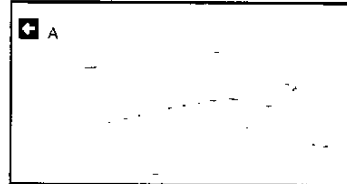
Most Popular Exterior Colors by Percentage



Clockwise at left are the anticipated four most popular S-Series Pickup and Extended-Cab colors, based on national sales volume. They are listed for reference only. To identify the top-selling colors in your area, by model, use the Retail Sales Analysis (RSA).

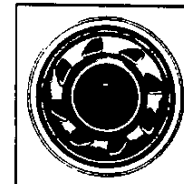
Summit White	17%
Dark Cherry Red Metallic	14%
Emerald Green Metallic	14%
Apple Red	12%
Other colors	43%

Seat Styles

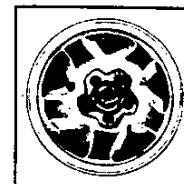


- A. Bench seat — Custom Vinyl.
- B. Bench seat — Custom Cloth.
- C. Reclining Deluxe Cloth 60/40 split-bench seat — LS.
- D. Reclining Deluxe Cloth high-back bucket seats — LS.

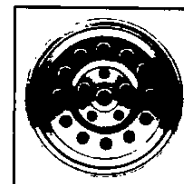
Wheels



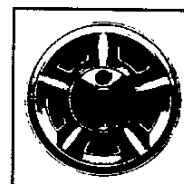
2WD Base 15" steel wheel with black center cap.



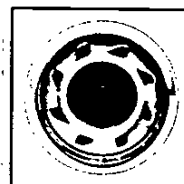
(RPO N60) 2WD 15" optional argon-color cast-aluminum wheel. Chrome center cap with gold bowtie. Included with LS Bonus Value Package.



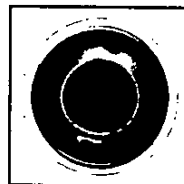
(RPO 5P2) 4x4 15" special aluminum wheel. Optional on all 4x4 models and trim levels.



(RPO N90*) 4x4 15" cast-aluminum wheel. Standard with Exterior Appearance Package. Optional on all 4x4 models with LS trim.



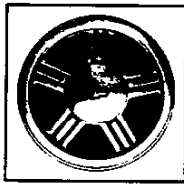
2WD 15" steel wheel. Included with LS trim. Argon color with black center cap and bright trim ring.



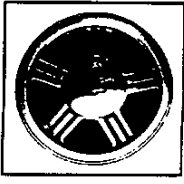
4x4 15" steel wheel. Standard on Base models. Argon color with black center cap. Trim ring included with LS trim.



(RPO PA3) 4x4 15" cast-aluminum wheel. Optional on LS 4x4 models. NA with Exterior Appearance Package or on Base models.



(RPO P96) 2WD SS 16" cast-aluminum wheel. Included with SS (chrome center cap with red bowtie) and with ZQ8 suspension on YC3 trim (chrome center cap with gold bowtie, shown at left).



*Not available with Base Preferred Equipment Group.



S-Series Pickup

'97

P.D.S.E.I. ... explain ... 1997 models ... this brand ... detail ... improvements ... changes and ... features are ... highlighted. ... Please review ... the supplied ... information, ... keeping in ... mind that ... this material ... is provided to ... you before ... production ... startup — ... and is liable ... to change.

P.D.S.E.I. New-1997 features appear in bold.

P

PERFORMANCE

• **FRAME STRUCTURE (2WD MODELS)** — increased torsional and vertical stiffness are designed to provide a more pleasing ride. • **4300 VORTEC V6 WITH SEQUENTIAL FUEL INJECTION (STD. ON 4X4 MODELS) AND OPTIONAL VORTEC 4300 V6 SFI (REQUIRED ON SS)** — provide quiet, smooth performance and extended service intervals.

D

DURABILITY

• **LONG-LIFE COOLANT** — extends coolant change intervals to 5 years/100,000 miles.* • **100,000-MILE SPARK PLUGS AND WIRES** — for extended service intervals.* • **SERPENTINE DRIVE BELT SYSTEM** — designed to last 100,000 miles. No need to check engine timing — ever. • **BUMPER TO BUMPER WARRANTY** — 3-year/36,000-mile, no-deductible, limited warranty, including parts and labor.

*Maintenance needs vary with different uses and driving conditions.

S

SAFETY

• **THEFT PROTECTION** — VIN numbers are on major parts to help provide greater theft deterrence. • **AUTOMATIC DAYTIME RUNNING LAMPS** — make vehicle more visible during daylight hours. • **DRIVER AIR BAG** — designed to help protect against injury in certain moderate to severe frontal collisions. Always wear safety belts, even with air bags. • **4-WHEEL ANTI-LOCK BRAKE SYSTEM (ABS)** — standard on all models, helps maintain steering control and minimizes wheel lockup on most slippery surfaces.

E

EXTERIOR

• **GM EXCLUSIVE OPTIONAL EXTENDED-CAB THIRD DOOR** — provides easy entry/exit for rear-seat passenger and easy access to cargo located behind front seat. • **TWO-SIDE-GALVANIZED STEEL** — on major exterior body panels (except the roof and pickup box front panel) makes additional rustproofing unnecessary. • **BASECOAT/CLEARCOAT PAINT** — high-gloss shine, long-lasting exterior finish resists fading.

I

INTERIOR

• **SCOTCHGARD™ PROTECTOR** — on cloth seats, door trim panels and carpet. Resists stains for easy cleanup. • **SOLAR-RAY TINTED GLASS** — reduces the total solar energy transfer by one-third. • **CUSTOM FOLDING STANDARD REAR JUMP SEATS** — in Extended-Cab models. Easily accommodate two rear-seat passengers.

NOTE: driver-side rear jump seat is eliminated when optional third door is ordered.

1997 Chevy Truck Dealer Order Guide

Competitive Models

- Ford Ranger
- Toyota Tacoma
- Nissan Hardbody
- Mazda B-Series
- Dodge Dakota

Additional Information on Significant Features

- The improved 4L60-E automatic transmission (M30) makes possible up to a 20% increase in pump output, depending on operating conditions.
- Aluminum valves reduce parasitic loss, while a revised clutch plate design makes improved efficiency possible.
- Frame and structural enhancements on 2WD models include new frame center-bearing support with increased torsional stiffness, along with a new single-piece riveted rear shock absorber cross member for increased vertical and fore/aft stiffness. There is also a new tubular- design center-bearing support cross member for Extended-Cab models. These improvements are designed to provide a smoother ride.

Deletions

- Two exterior colors have been deleted for 1997: Purple Metallic (#21) Bright Teal Metallic (#38) and have been replaced by two new colors: Fairway Green Metallic (#87) and Medium Beige Mystique Metallic (#65).

Forecasted Percent of Mix

SERIES	
S-Series 2WD	85%
S-Series 4x4	15%
Total	100%
MODELS	
Regular-Cab Short-Box	44%
Regular-Cab Long-Box	8%
Extended-Cab Short-Box	48%
Total	100%
TRIM LEVELS	
Standard	15%
YC3 LS Decor	35%
YC5 LS Decor with Exterior Appearance Package	35%
YC3 LS with Sportside Box	15%
Total	100%
ENGINES	
2.2 Liter L4	50%
Vortec 4300L V6 with SFI (LF6)	45%
Vortec 4300L V6 with SFI (L35)	5%
Total	100%
TRANSMISSIONS	
5-Speed Manual with Overdrive	45%
4-Speed Electronically Controlled Automatic with Overdrive	55%
Total	100%

1997 S-SERIES PICKUP HIGHLIGHTS

TWO NEW EXTERIOR COLORS - FAIRWAY GREEN METALLIC, MEDIUM
BEIGE MYSTIQUE METALLIC.

S/T PICKUP EQUIPMENT SUMMARY

STANDARD INTERIOR FEATURES

	BASE	YC3	YC5	*B4U	**ZR2
AIR BAG : DRIVER SIDE	S	S	S	S	S
ASSIST HANDLE: PASSENGER SIDE	S	S	S	S	S
DOOR BEAMS: SIDE IMPACT	S	S	S	S	S
GLASS: SOLAR RAY TINTED	S	S	S	S	S
GLOVE BOX: NON-LOCKING, WITH DOOR-OPERATED LIGHT	S	S	S	S	S
HEADLINER: FULL COVERAGE, FOAM-BACKED W/COLOR-KEYED CLOTH COVER	S	S	S	S	S
INSTRUMENTS: FUEL LEVEL, ODOMETER, OIL PRESSURE, SPEEDOMETER, TEMPERATURE GAGE, TRIP ODOMETER AND VOLTMETER	S	S	S	S	S
INSULATION: DASH PANEL, DOORS, CAB BACK, FLOOR AND HOOD, INSTRUMENT PANEL AND COWL/FENDER SEAL	S	S	S	S	S
LAMPS: INTERIOR, DOOR-OPERATED DOME AND FRONT FLOOR COURTESY W/DELAYED ENTRY	S	S	S	S	S
LOCK SYSTEM: SINGLE TWO-SIDED KEY	S	S	S	S	S
RADIO: ETR AM/FM STEREO, WITH DIGITAL CLOCK	..	S	S	S	S
SUNSHADES: PADDED, COLOR-KEYED CLOTH	S
DUAL PADDED, COLOR-KEYED W/SLIDER EXTENSIONS AND RH & LH ILLUMINATED VANITY MIRROR	..	S	S	S	S
TRAILERING: WIRING HARNESS, <u>S-LEAD</u>	S	S	S	S	S
WARNING TONE: HEADLAMP-ON WARNING BUZZER	S	S	S	S	S
WINDOWS: REAR QUARTER SWING-OUT (EXTENDED CAB ONLY)	..	S	S	..	S

STANDARD EXTERIOR FEATURES

	BASE	YC3	YC5	*B4U	**ZR2
AIR DAM: MATCHES BUMPER COLOR	S	S	S	S	S
BRACKET: LICENSE PLATE, FRONT	S	S	S	S	S
LAMP: ENGINE COMPARTMENT	S	S	S	S	S
LAMPS: DAYTIME RUNNING	S	S	S	S	S
MIRROR: OUTSIDE REARVIEW; LH AND RH, BELOW-EYE-LINE, BLACK	S	S	S	S	S
SPARE TIRE: FULL SIZE, MOUNTED UNDER BED	S
W/LN2 ENG COMPACT, MOUNTED UNDER BED	S	S	S	S	..
STEERING: POWER	S	S	S	S	S
TIE DOWN: LOAD, ANCHORS (4)	S	S	S	S	S
TOW HOOKS: FRONT, T10 ONLY (2)	S	S	S	..	S
WIPERS: INTERMITTENT (ADJUSTABLE)	S	S	S	S	S

STANDARD CHASSIS FEATURES

	BASE	YC3	YC5	*B4U	**ZR2
ALTERNATOR: 100 AMPS	S	S	S	S	S
BATTERY: 525 COLD CRANKING AMPS	S	S	S	S	S
BRAKES: POWER ASSISTED, FRONT DISC, REAR DRUM WITH FOUR-WHEEL ANTI-LOCK BRAKING SYSTEM	S	S	S	S	S
ENGINE: S10: 2.2 LITER SFI	S	S	S
T10: VORTEC 4300 V6 SFI	S	S	S	..	S
FUEL TANK: 19 GALLON CAPACITY	S	S	S	S	S
SUSP FRT: S10 : INDEPENDENT COIL SPRINGS	S	S	S	S	S
T10: INDEPENDENT TORSION BAR	S	S	S	S	S
SUSP REAR: SEMI-FLOATING AXLE, 2-STAGE MULTI-LEAF SPRINGS	S	S	S	S	S
TRANSMISSION: 5-SPEED MANUAL W/OVERDRIVE	S	S	S	..	S

*CS10603
**CT106*3

BOLD, ITALICS AND UNDERLINED INDICATES NEW FOR '97

SEE ADDITIONAL OPTIONS FOR B4U AND ZR2 CONTENT

REVISED:8-19-96

1997 ORDER GUIDE

S/T PICKUP

Page 1

Prices Shown Are Manufacturer's Suggested Retail Prices (MSRP) At The Time Of Publication. These Prices Are To Be Used Only As An Aid To Inventory Management Since MSRP Figures Change Periodically. The Vehicle Price Schedule Is The Official Pricing Documentation Of Chevrolet Motor Division And Should Be Used In Discussing Vehicle Prices With Potential Buyers. The Model Prices Shown In The Order Guide Include The Destination Freight Charges.

**S/T PICKUP
TRIM DEFINITION & OPTION SUMMARY**

INTERIOR TRIM

		BASE	YC3	YC5	'B4U	**ZR2
COVERING:	BACK PANEL, CARPET	S	S	S	S	S
DOOR TRIM PANELS:	W/LH & RH MOLDED MAP POCKETS					
	ONE-PIECE MOLDED PLASTIC W/INTEGRAL PADDED ARM RESTS	S	--	--	--	--
	MOLDED PLASTIC W/SOFT CLOTH UPPER INSERT W/INTEGRAL PADDED ARM RESTS	--	S	S	S	S
FLOOR COVERING:	VINYL, DARK GRAY, FULL FLOOR				S	--
	CARPETING, COLOR-KEYED, FULL FLOOR	--	S	S	S	S
MIRROR:	INTERIOR REARVIEW: DAY/NIGHT	S	S	S	S	S
MOLDING:	BODYSIDE, WHEEL OPENING	--	--	S	--	--
POWER POINTS:	DUAL COVERED:	--	S	S	S	S
SCOTCHGARD:	FABRIC PROTECTOR ON CLOTH TRIM AND DOOR PANELS	S	--	--	--	--
	FABRIC PROTECTOR ON CLOTH TRIM, DOOR PANELS AND CARPETING	--	S	S	S	S
SEATS:	CUSTOM VINYL BENCH W/FOLDING BACK, DUAL CUPHOLDERS	S	--	--	--	--
	REGULAR CAB: 60/40 CUSTOM CLOTH SPLIT BENCH WITH RECLINERS (INCLS ARMREST, STORAGE POUCH AND DUAL CUPHOLDERS)	--	S	S	S	S
	EXTENDED CAB: 60/40 CUSTOM CLOTH SPLIT BENCH WITH RECLINERS (INCLUDED ARMREST W/STORAGE COMPARTMENT, DUAL CUPHOLDERS AND PASSENGER SIDE EASY ENTRY FEATURE)	--	S	S	--	--
	(INCLS CUSTOM VINYL FOLDING REAR JUMP SEATS)	--	S	S	--	S
	RECLINING HIGH BACK BUCKET SEAT (INCLS CONSOLE AND ADJUSTABLE MANUAL LUMBAR SUPPORT)	--	--	--	--	S
STEERING WHEEL:	DELUXE 4-SPOKE, BLACK	S	S	S	--	S
	LEATHER WRAPPED	--	--	--	S	--

EXTERIOR TRIM

		BASE	YC3	YC5	'B4U	**ZR2
BUMPERS:	FRONT & REAR STEP: DARK GRAY W/DARK GRAY END CAPS	S	--	--	--	--
	FRONT & REAR STEP, S10: COLOR-KEYED W/COLOR-KEYED END CAPS	--	S	--	S	--
	T10: DARK GRAY W/DARK GRAY END CAPS	--	S	--	--	S
	COLOR-KEYED (ALL)	--	--	S	--	--
	FRONT DARK GRAY W/DARK GRAY END CAPS AND REAR BUMPER DELETE (INCLS CLOSE-OUT PANEL)	--	--	--	S	--
GRILLE:	DARK GRAY W/HALOGEN HEADLAMPS	S	--	--	--	--
	CHROME W/HALOGEN HEADLAMPS	--	S	S	--	S
	BODY COLOR W/HALOGEN HEADLAMPS	--	--	--	S	--
NAMEPLATE	B PILLAR (LS) BADGE	--	S	S	S	S
WHEELS:	15 X 7 STEEL, PAINTED ARGENT W/BLACK CENTER CAP	S	--	--	--	--
	15 X 7 STEEL, PAINTED ARGENT W/TRIM RING AND BLACK CENTER CAP	--	S	--	--	S
	15 X 7 ALUMINUM, CAST	--	--	S	--	--
	16 X 8 ALUMINUM, CAST (REQS ZQ8 SUSPENSION)	--	--	--	S	--

* CS10603

**CT106*3

BOLD, ITALICS AND UNDERLINED INDICATES NEW FOR '97

S/T PICKUP

MODEL AND BODY

Base	Description	Model No	Body	LS	Description	Model No	Body
*12,063.00	Fleetside	CS10603	E63	*12,963.00	Fleetside	CS10603	E63
*12,363.00	Fleetside	CS10803	E63	*13,263.00	Fleetside	CS10803	E63
				*14,863.00	Fleetside Ext Cab	CS10653	E63
				*13,413.00	Sportside	CS10603	E62
				*15,313.00	Sportside Ext Cab	CS10653	E62

*Includes Destination & Handling Charges

EMISSIONS (Must Be Specified) (Refer Emission Requirements Section)

- FE9 Federal Emission Requirements
- NG1 NY/MA Emission Requirements
- YF5 California Emission Requirements
- NB8 Ca/NY/MA Override (Requires FE9 Emissions)
- NC7 Federal Emission Override (Requires YF5 or NG1 Emissions)

**SUSPENSION AND POWER TEAMS CHART
(MUST SPECIFY)
2-WHEEL DRIVE**

Required Options (Shaded Area)

MODELS	CS10603	CS10653	CS10603 CS10653 CS10803	CS10803	CS10603	CS10653
SUSPENSION	Z83 (Smooth)		Z85 (Increased Capacity)		ZQ8 (Sport)	
CHARACTERISTICS						
RIDE	Solid/Smooth Paved		Firm Paved/Gravel		Performance Paved	
PRIMARY ROAD USE	Light-Duty		Heavy-Duty/Light-Duty		Light-Duty	
TRAILERING						
GVW RATING	4200	4400	4600	4900	4200	4400
GAWF/GAWR	2500/2300	2500/2300	2500/2700	2500/2700	2500/2300	2500/2300
REQUIRED OPTIONS						
GVWR	C5T		C5D		C5T	
TIRES QCA/QCE	QCA/QCE		QCA/QCE		QCB	
ENGINE	LN2(a)		LN2(a)		LN2(a)	
TRANSMISSION	MW2	M30	MW2	M30	MW2	M30
AXLE RATIO	GT4	GT5	GT4(d)	GT5	GT4	GT5
	(3.73)	(4.10)	(3.73)	(4.10)	(3.73)	(4.10)
			GT5(c)			
			(4.10)			
ENGINE	LF6		LF6(b)		LF6	
TRANSMISSION	M50	M30	M50	M30	M50	M30
AXLE RATIO	GU4	GU4(a)	GU4	GU4(a)	GU4	GU4(a)
	(3.08)	(3.08)	(3.08)	(3.08)	(3.08)	(3.08)
			GU6	GU6	GU6	GU6
			(3.42)	(3.42)	(3.42)	(3.42)
ENGINE	L35		L35(b)		L35	
TRANSMISSION	M50	M30	M50	M30	M50	M30
AXLE RATIO	GU4(e)	GU4(a)	GU4(b,e)	GU4(a)	GU4(e)	GU4(a)
	(3.08)	(3.08)	(3.08)	(3.08)	(3.08)	(3.08)
			GU6	GU6	GU6	GU6
			(3.42)	(3.42)	(3.42)	(3.42)

- (a) N/A G80 Locking Differential
- (b) N/A CS10803 w/C5D GVWR
- (c) N/A CS10603
- (d) N/A CS10653
- (e) Reqs G80

THE LOWEST NUMERICAL AXLE RATIO HAS BEEN ENGINEERED TO COVER THE WIDEST RANGE OF APPLICATIONS AND OFFER THE BEST FUEL ECONOMY

(Continued on Page 4)

MODEL AND BODY

Base	Description	Model No	Body	LS	Description	Model No	Body
*16,863.00	Fleetside	CT10603	E63	*17,763.00	Fleetside	CT10603	E63
*17,196.00	Fleetside	CT10803	E63	*18,190.00	Fleetside	CT10803	E63
				*19,663.00	Fleetside Ext Cab	CT10653	E63
				*18,213.00	Sportside	CT10603	E62
				*20,113.00	Sportside Ext Cab	CT10653	E62

*Includes Destination and Handling Charges

EMISSIONS (Must Be Specified) (Refer Emission Requirements Section)

- FE9 Federal Emission Requirements
- NG1 NY/MA Emission Requirements
- YF5 California Emission Requirements
- NB8 Ca/NY/MA Override (Requires FE9 Federal Emissions)
- NC7 Federal Emission Override (Requires YF5 California or NG1 NY/Massachusetts Emissions)

**SUSPENSION AND POWER TEAMS CHART
(MUST SPECIFY)**

4-WHEEL DRIVE

Required Options (Shaded Area)

MODELS	CT10603 CT10653	CT10603 CT10803 CT10653	CT10603 CT10653	CT10603	CT10653
SUSPENSION	Z83 (Smooth)	Z85 (Increased Cap)	ZM6 (Off-Road)	ZR2 (Wide Stance) (c)	
CHARACTERISTICS					
RIDE	Solid	Firm	Very Firm	Firm	
PRIMARY ROAD USE	Paved/Gravel	Paved/Gravel	Gravel/Unimproved	On/Off Road	
TRAILERING	Light-Duty	Light-Duty/Heavy-Duty	Light-Duty/Heavy-Duty	Light-Duty/Heavy-Duty	
GVW RATING	4650	5150	5150	4650	4900
GAWF/GAWR	2700/2300	2700/2700	2700/2700	2700/2300	2700/2700
REQUIRED OPTIONS					
GVWR	C5X	C6F	C6F	C5X	C6A
TIRES	QCA/QCE	QBF/QEB	QEB	QJJ	QJJ
ENGINE	LF6	LF6	LF6	LF6	LF6
TRANSMISSION	M50 M30	M50 M30	M50 M30	M50 M30	M50 M30
AXLE RATIO	GU4 (a) GU4 (a) (3.08) (3.08) GU6 GU6 (3.42) (3.42)	GU6 GU6 (3.42) (3.42) GT4 (3.73) (b)	GU6 GU6 (3.42) (3.42) GT4 (3.73) (b)	GT4 GT4 (3.73) (3.73) GT4 GT4 (3.73) (3.73)	GT4 GT4 (3.73) (3.73) GT4 GT4 (3.73) (3.73)
ENGINE	L35	L35	L35	L35	L35
TRANSMISSION	M50 M30	M50 M30	M50 M30	M50 M30	M50 M30
AXLE RATIO	GU6(b) GU4 (a) (3.42) (3.08) GU6 (3.42)	GU6(b) GU6 (3.42) (3.42) GT4(b) (3.73)	GU6(b) GU6 (3.42) (3.42) GT4(b) (3.73)	GT4 GT4 (3.73) (3.73) GT4 GT4 (3.73) (3.73)	GT4 GT4 (3.73) (3.73) GT4 GT4 (3.73) (3.73)

- (a) N/A G80 Locking Differential
- (b) Reqs G80 Locking Differential
- (c) Reqs E63 Fleetside

THE LOWEST NUMERICAL AXLE RATIO HAS BEEN ENGINEERED TO COVER THE WIDEST RANGE OF APPLICATIONS AND OFFER THE BEST FUEL ECONOMY

S/T PICKUP

No Deletions Allowed. Additional Options/Upgrades (Where Indicated) May be Ordered from the Additional Ordering Option Listing.

*PEG 1SH NOT AVAILABLE FOR OREGON, WASHINGTON, IDAHO OR CALIFORNIA

	CS10603*	CS10653
	S	1
	H	S
		J
Preferred Equipment Group		
Axle, 3.73 Rear	GT4	x
Axle, 3.08 Rear (C)	GU4	N/A
Body, Fleetside (A)	E63	x
Decor, LS	YC3	x
Engine, 2.2 Liter SFI L4	LN2	x
Engine, Vortec 4300 V6 SFI	LF6	N/A
GVW Rating: 4200	C5T	x
GVW Rating: 4600	C5D	N/A
Radio, ETR AM/FM Stereo w/Seek-Scan Cassette Tape and Clock (B) ...	UM6	x
Seat, Deluxe Reclining Split Bench	AM6	x
Seat, Reclining High Back Bucket	AV5	N/A
Suspension, Solid Smooth	Z83	x
Suspension, Increased Capacity	Z85	N/A
Tires, P205/75R15 Blackwall (D)	QCE	x
Transmission, 5-Speed Manual w/Overdrive	MW2	x
Transmission, 5-Speed Manual w/Overdrive (E)	M50	N/A
Wheels, Aluminum	N60	x

- (A) Body: May Substitute E62
- (B) UM6 Radio: May Substitute UX1 or U1C Radio
- (C) GU4 Axle: May Substitute GU6
- (D) QCE Tire: May Substitute QCA; w/ZQ8 Add QCB
- (E) M50 Transmission: May Substitute M30

PREFERRED EQUIPMENT GROUP PRICES	
370.00	1SH
(-300.00)	PEG SAVINGS
1601.00	1SJ
(-600.00)	PEG SAVINGS

ADDITIONAL OPTIONS

N.C.	R8S	ACKNOWLEDGEMENTS:
2.00	R8T	Multiple Order Numbers
N.C.	GU6	Preliminary Invoice
805.00	C60	AXLE: Rear, 3.42 Ratio (CS10653 Model Only)
89.00	V10	AIR CONDITIONING
395.00	ZQ3	COLD CLIMATE PACKAGE
375.00	E24	CONVENIENCE GROUP: Tiltwheel and Cruise Control (N/A 1SH PEG)
		DOOR, THIRD: (CS10653 Only)
		EMISSIONS SYSTEMS: (Refer Emission Requirement Tab Section)
N.C.	FE9	Federal Emission Requirements
170.00	NG1	New York/Massachusetts Emission Requirements
170.00	YF5	California Emission Requirements
N.C.	NB8	California/New York/Massachusetts Emission Override (Reqs FE9 Federal Emissions)
N.C.	NC7	Federal Emission Override (Reqs NG1 New York/ Massachusetts or YF5 California Emissions)
		RADIO EQUIPMENT:
160.00	LX1	Electronically Tuned AM Stereo/FM Stereo Radio w/Seek-Scan, Stereo Cassette Tape with Search and Repeat, Graphic Equalizer and Digital Clock
284.00	U1C	Electronically Tuned AM/FM Stereo Radio w/Seek-Scan, Compact Disc Player and Digital Clock (Incls 4 Premium Speakers Except When E24 Third Door is Ordered)
59.00	U16	TACHOMETER (CS10653 Only)
703.00	ZQ8	SPORT SUSPENSION PACKAGE (CS10653 Only) (Reqs C3A GVWR) (Incls Aluminum Wheels)
1070.00	M30	TRANSMISSION: 4-Speed Automatic, Electronic (CS10653 Only)
121.00	QCA	TIRE: P205/75R-15 W/L
113.00	A28	WINDOW: Sliding Rear

No Deletions Allowed. Additional Options/Upgrades (Where Indicated)
May be Ordered from the Additional Ordering Option Listing.

		CT10653
		1
		S
		M
Preferred Equipment Group		
Axle, 3.42 Rear(A)	GU6	x
Body, Fleetside (B)	E63	x
Decor, LS	YC3	x
Engine, Vortec 4300 V6 SFI	LF6	x
GVW Rating: 5150	C6F	x
Radio, ETR AM/FM Stereo w/Seek-Scan Cassette Tape and Clock (C) ...	UM6	x
Seat, Reclining High Back Bucket	AV5	x
Suspension, Increased Capacity	Z85	x
Tires, P235/70R15 Blackwall (D)	QBF	x
Transfer Case, Electric Shift	NP1	x
Transmission, 5-Speed Manual w/Overdrive (E)	M50	x
Wheels, Aluminum (F)	N90	x

- (A) GU6 Axle: May Substitute GT4
- (B) Body: May Substitute E62
- (C) UM6 Radio: May Substitute UX1 or U1C Radio
- (D) QBF Tire: May Substitute QEB
- (E) M50 Transmission: May Substitute M30
- (F) N90 Wheels: May Substitute 5P2 or PA3 Wheels

Preferred Equipment Group Prices	
1022.00	1SM
(-600.00)	PEG SAVINGS

ADDITIONAL OPTIONS

N.C.	R8S	ACKNOWLEDGEMENTS:
200	R8T	Multiple Order Numbers
		Preliminary Invoice
N.C.	GT4	AXLE:
252.00	G80	3.73 Ratio
805.00	C60	Locking Differential
89.00	V10	AIR CONDITIONING
395.00	ZQ3	COLD CLIMATE PACKAGE
375.00	E24	CONVENIENCE GROUP: Tiltwheel and Cruise Control
		DOOR, THIRD
N.C.	FE9	EMISSIONS SYSTEMS: (Refer Emission Requirement Tab Section)
170.00	NG1	Federal Emission Requirements
170.00	YF5	New York/Massachusetts Emission Requirements
N.C.	NB8	California Emission Requirements
N.C.	NC7	California/New York/Massachusetts Emission Override (Reqs FE9 Federal Emissions)
		Federal Emission Override (Reqs NG1 New York/ Massachusetts or YF5 California Emissions)
160.00	UX1	RADIO EQUIPMENT:
284.0	U1C	Electronically Tuned AM Stereo/FM Stereo Radio w/Seek-Scan, Stereo Cassette Tape with Search and Repeat, Graphic Equalizer and Digital Clock
59.00	U16	Electronically Tuned AM/FM Stereo Radio w/Seek-Scan, Compact Disc Player and Digital Clock (Incls 4 Premium Speakers Except When E24 Third Door Is Ordered)
390.00	QEB	TACHOMETER
1070.00	M30	TIRE: P235/70R-15 WOL
		TRANSMISSION: 4-Speed Electronically Controlled Automatic w/Overdrive
N.C.	5P2	WHEELS:
N.C.	PA3	Special Aluminum
11300	A28	Aluminum, Bright w/Medium Gray Accent
		WINDOW: Sliding Rear

S/T PICKUP
REFER WEEKLY STOPS/LATEST UPDATE

MUST SPECIFY:

AXLE, EMISSION, ENGINE, PEG, SUSPENSION PACKAGE, TIRE AND TRANSMISSION

**No Deletions Allowed. Additional Options/Upgrades (Where Indicated)
May be Ordered from the Additional Ordering Option Listing.**

		BASE	LS
		1 S A	1 S B
(-281.00)	Preferred Equipment Group (Regular Cab Only)		
	Fleetside (A) E63	x	x
	Radio Delete (B) UL5	x	N/A
	Rear Step Bumper Delete (Incls Close Out Panel) (C) ---	x	N/A
N.C.	Preferred Equipment Group		
	LS Decor (D) YC3		x

Allowable Substitutions (Where Available):

- (A) E63: May substitute E62 on C*106*3 (LS Model Only)
- (B) UL5: May substitute UM7, UM6, UX1 Radios Only
- (C) Bumper Delete—: May substitute VF6 Rear Step Bumper
- (D) YC3: May substitute YC5 Exterior Appearance Package on C*106*3 Only

Refer Following Pages for Additional Options.

**S/T PICKUP
REFER WEEKLY STOPS/LATEST UPDATE**

ADDITIONAL OPTIONS

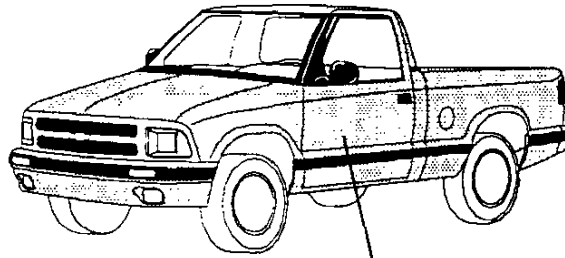
INCL. W/ P.E.G.OPTION		
N.C. 200	R8S R8T	ACKNOWLEDGEMENTS: Multiple Order Numbers Preliminary Invoice
805.00 N.C. 11500	C60 R6G ANL	AIR CONDITIONING (MUST ORDER ONE) Air Conditioning Air Conditioning Not Desired AIR DAM WITH FOG LAMPS: (S10 Only) (Incl w/B4U SS) (N/A 1SA)
N.C. N.C. N.C. N.C. 252.00 56.00	GU4 GU6 GT4 GT5 G80 UA1	AXLES, REAR: (Refer Suspension and Power Teams Chart for Availability) 3.08 Ratio 3.42 Ratio 3.73 Ratio 4.10 Ratio (S10 Only) Locking Differential (Incl w/B4U SS) (N/A LN2 Eng)
N.C. N.C.	A,B,H,J, F,G,M,N E63 E62	BATTERY: Heavy-Duty, 690 Cold Cranking amps (Incl w/V10 Cold Climate) BODY CODE: (Refer Model and Body Section) Fleetside Sportside (CS106*3 Reqs YC3 Decor and ZY1 Paint; CT106*3 Reqs YC3 Decor, ZY1 Paint and ZM6/Z83/Z85 Suspension)
55.00	VF6	BUMPER EQUIPMENT: Rear Step (Standard w/LS Decor) (Available w/B4U SS or 1SA Only) (Vehicles registered in certain states must have a rear bumper to be operated on their roads. A close-out panel is not a bumper. Consult your local laws.)
89.00	V10	COLD CLIMATE PACKAGE: (Incls UA1 H.D. Battery and Engine Block Heater)
535.00 395.00	ZQ6 ZQ3	CONVENIENCE GROUP: Power Door Locks, Windows and Exterior Electric Remote Mirrors (N/A 1SA) Tilt Steering and Speed Control
N.C. N.C.	A B,F,G,H J,M,N --- YC3	DECOR: (Refer Standard Equipment for Package Content) Base (Incl w/1SA Only) LS: (N/A 1SA) (Incl w/B4U SS)
524.00 556.00 375.00	YC5 E24	LS w/Exterior Appearance Package (N/A C*10803) (N/A 1SA or w/ZR2 Suspension Package) CS106*3 CT106*3
N.C. 170.00 170.00 N.C. N.C.	FE9 NG1 YF5 NB8 NC7	DOOR, THIRD: (C*10653 Only) (Reqs E62/E63 Body Equipment) EMISSIONS SYSTEMS: (Refer Emission Requirement Tab Section) Federal Emission Requirements New York/Massachusetts Emission Requirements California Emission Requirements California or New York/Massachusetts Emission Override (Reqs FE9 Federal Emissions) Federal Emission Override (Reqs YF5 California or NG1 New York/Massachusetts Emissions)
N.C. N.C.	F,H G,J,M,N LN2 LF6	ENGINES: (Refer Suspension and Power Teams Chart for Availability) 2.2 Liter SFIL4 (S10 Only) Vortec 4300 V6 SFI (Incls Engine and Transmission Oil Coolers) W/CT* ***3 or w/o PEG 1SG or 1SJ W/CS* ***3 w/o PEG 1SG or 1SJ
1,249.00 259.00	L35	Vortec 4300 V6 SFI (Incls Engine and Transmission Oil Coolers and U16 Tachometer) CS10*3 CT10*3
N.C. 20.00	B30 B32 AJ1	FLOOR COVERING: Carpet (C*10*03 Only) (Reqs 1SA) (Incl w/YC3/YC5 on all Models) Auxiliary Front Floor Mats (Reqs B30 Carpet on C*10*03 w/1SA) (N/A C*10653 w/1SA)
36.00 71.00		GLASS: Deep Tinted C*10*03 w/A28 w/o A28
72.00 107.00		C*10653 w/A28 w/o A28
N.C.	C5T C3A C5D C5X C5A C6F	GVWR: (MUST SPECIFY ONE) (Refer Suspension and Power Teams Chart for Requirements) 4200# 4400# 4600# 4650# 4900# 5150#
N.C. 197.00	ZY1 ZY7	PAINT, EXTERIOR (Refer Trim Chart for Availability) Solid Custom Two-Tone
226.00	UM7	RADIO EQUIPMENT: Electronically Tuned AM/FM Stereo Radio w/Seek-Scan and Digital Clock (Std on all but Base PEG) (Reqs PEG 1SA)
348.00 122.00 N.C.	UM6	Electronically Tuned AM/FM Stereo Radio w/Seek-Scan, Stereo Cassette Tape and Digital Clock w/PEG 1SA w/PEG 1SB w/PEG 1SF, 1SG, 1SH, 1SJ, 1SM or 1SN
508.00 282.00 180.00	UK1	Electronically Tuned AM Stereo/FM Stereo Radio w/Seek-Scan, Stereo Cassette Tape with Search and Repeat Graphic Equalizer and Digital Clock w/PEG 1SA w/PEG 1SB w/PEG 1SF, 1SG, 1SH, 1SJ, 1SM or 1SN
406.00 284.00 140.00	UTC AU0	Electronically Tuned AM/FM Stereo Radio w/Seek-Scan, Compact Disc Player and Digital Clock (Incls 4 Premium Speakers) (N/A 1SA) (Except When E24 Third Door is Ordered) w/PEG 1SB w/PEG 1SF, 1SG, 1SH, 1SJ, 1SM or 1SN REMOTE KEYLESS ENTRY: (Reqs 1SB and ZQ6 Convenience Group)

ADDITIONAL OPTIONS

INCL. W/ P.E.G.OPTION				
N.C.		A52	SEAT OPTION: MUST SPECIFY (Refer Color and Trim Chart for Availability) Bench Seat (Reqs 1SA) 60/40 Reclining Split Bench Seat (Reqs YC3, YC5) (N/A w/ZR2 Suspension Package) Reclining High Back Bucket Seat (Incls Adjustable Manual Lumbar Support) C*10653 w/M50 W/O 1SG, 1SJ, 1SM or 1SN C*10653 w/M30 W/O 1SG, 1SJ, 1SM or 1SN (Incls Console and Shift Selector in Floor Console) CS10* *3 w/LN2 and MW2 (Excludes Console) C*10653 W/PEG 1SG, 1SJ, 1SM or 1SN C*10*03 w/o MW2 (Incls Console)	
N.C.	F, H	AM6		
	G, H, M, N	AV5		
241.00				
241.00				
96.00				
N.C.				
241.00				
126.00		ZM5		
629.00		B4U		
			SHIELD PACKAGE: (T10 Only) (Incl w/ZR2 Suspension Package) SS PACKAGE: (CS10603 Only) (Refer Standard Equipment Pages for Content) (Also Incls YC3 Decor, G80 Locking Differential, ANL Fog Lamps, N96 Cast Aluminum Wheels w/Special Bright Hub Caps, Body Color Grille, Rear Step Bumper Delete (Incls Close-Out Panel), Special SS Badging (Red "Bowtie" w/SS Emblem on doors and tailgate, Red "Bowtie" on grille and hubcaps, and Red "Chevrolet" badge on tailgate), NP5 Leather-Wrapped Steering Wheel, GU6 Axle Ratio) (Reqs L35 Eng, M30 Trans, and Colors 72 Red, 41 Black or 50 White) (Reqs ZQ8 Suspension Package) (N/A w/E62 Sportside)	
54.00		NP5	STEERING WHEEL: Leather Wrapped (N/A 1SA) (Incl w/B4U SS)	
N.C.	F, H	Z83	SUSPENSION PACKAGE: (Refer Suspension and Power Teams Chart) Solid Smooth Ride (N/A C*10803) w/CS10653 Increased Capacity CS10653C*10803 C*10603CT10653	
(-64.00)		Z85		
N.C.	G, J			
64.00	M, N	ZQ8	Sport (S106*3 Only) (Reqs YC3 Decor and V6 Engine) (Incls 16 x 8 Cast Aluminum Wheel) (N/A 1SA) W/B4U W/o B4U	
455.00		ZM6	Off-Road (Reqs CT106*3) (Incls Full-Size Spare Tire)	
703.00		ZR2	WIDE STANCE, SPORT PERFORMANCE (CT106*3 Only) (Refer Standard Equipment Pages for Content) (Incls Unique revised frame for wide tread. Front Tread (61.2") is 3.9" wider than standard. Rear Tread (59.1") is 3.9" wider than standard. Unique strengthened front differential gears and drive axles. Unique rear axle with 8.5" ring gear, larger wheel bearings and longer, larger diameter axle shafts. Unique rear suspension with revised multi-leaf springs and added rear axle track bar. Unique (28 mm vs 25 mm diameter) front stabilizer bar, 46 mm Bilstein gas pressurized shock absorbers. ZM5 Underbody Shields. Unique front fenders and pickup box outer panels with extra wide wheel flares. Modified jack and spare tire stowage winch. Body is 3" higher than standard (Refer Suspension Power Team Chart for GVWR) (Reqs YC3 Decor, GT4 Axle Ratio, AV5 Seats, LF6 or L35 Engine, QJJ Tires and ZY1 Solid Paint (See Paint Charts for color availability))	
851.00				
1725.00				
		U16		TACHOMETER: (Incl w/L35 Eng)
59.00				TIRES: (B/W: Blackwall, W/L: White Lettered, WOL: White Outline Lettered) (Incls Front, Rear and Spare) All-Seasons Steel Belted Radial Ply (Refer Suspension and Power Teams Chart for Availability and Requirements) P205/75R-15B/W P205/75R-15W/L P235/55R-16B/W (CS106*3 Only) P235/70R-15B/W CT10803 CS10603 or CT106*3
N.C.	QCE			
121.00	QCA			
N.C.	QCB			
	QBF			
192.00				
N.C.	QEB			
143.00				
390.00				
N.C.	QJJ			
123.00	M, N	NP1	31 x 10.5R-15B/W (Incl w/ZR2 Suspension Package)	
			TRANSFER CASE: Electronic Shift (T10 Only) (N/A 1SA)	
N.C.	F, H	MW2	TRANSMISSIONS (Refer Suspension and Power Teams Chart for Availability) 5-Speed Manual w/Overdrive (Reqs LN2 Engine) 5-Speed Manual w/Overdrive (N/A LN2 Engine) 4-Speed Electronically Controlled Automatic w/Overdrive (Incls Brake-Transmission Shift Interlock)	
N.C.		M50		
1,070.00		M30		
		N60	WHEELS: (Spare Wheel is Steel) Aluminum, Argent (S10 Only) w/o 1SA (Incl w/1SF, 1SG, 1SH or 1SJ) (Incl w/YC5 Decor) w/1SA	
248.00	F, G, H, J			
340.00				
280.00				
280.00	M, N	N90	Aluminum, Cast (T10 Only) (N/A 1SA) (Incl w/YC5 Decor)	
280.00		5P2	Special Aluminum (T10 Only) w/o 1SA w/1SA	
340.00				
280.00		PA 3	Aluminum, Bright w/Medium Gray Accent (T10 Only) (Reqs YC3 Decor)	
1130.00		A28	WINDOW: Sliding Rear	

S/T PICKUP

SOLID PAINT - ZY1

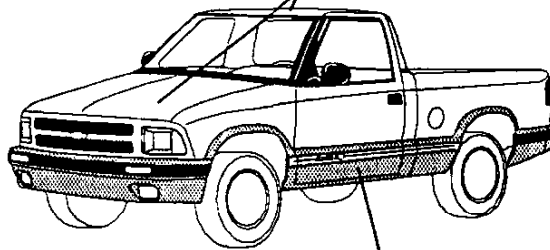


Color Code 1

CUSTOM TWO-TONE PAINT - ZY7

(Available w/YC3/YC5)

Color Code 1



(With D85 Striping)

Color Code 2

S/T PICKUP
INTERIOR AND EXTERIOR COLOR AVAILABILITY CHART

PLEASE NOTE: Below are the interior trim color and exterior paint combinations recommended by Chevrolet. They are the only interior and exterior color combinations available.

BASE DECOR
ZY1 PAINT (N/A EXTENDED CAB OR YC3/YC5)

TRIM LEVEL		Seat Option	INTERIOR COLORS			
Seat Type			Beige	Navy	Graphite	Gray
BASE INTERIOR		A52				
Custom Vinyl Bench Seat						13W
Custom Cloth Bench Seat		A52	64D	26D	12D	13D

EXTERIOR COLORS	Color Code	ZY CODE	RECOMMENDED INTERIOR TRIM COLORS			
AUTUMNWOOD, LT (MET)	55U	ZY1	x			x
BEIGE, MED MYSTIQUE (MET)	65U	ZY1	x			x
BLACK, ONYX	41U	ZY1	x			x
BLUE, LT (MET)	27U	ZY1		x		x
GREEN, EMERALD (MET)	43U	ZY1	x			x
GREEN, FAIRWAY	87U	ZY1	x			x
QUICKSILVER (MET)	96U	ZY1		x		x
RED, APPLE	72U	ZY1	x			x
RED, DK CHERRY (MET)	94U	ZY1	x			x
WHITE, SUMMIT	50U	ZY1	x	x		x

ZY1 PAINT WITHOUT B4U

TRIM LEVEL		Seat Option	INTERIOR COLORS			
Seat Type			Beige	Navy	Graphite	Gray
LS		AM6				
*Deluxe Cloth Reclining Split Bench Seat						13H
Deluxe Cloth Reclining High Back Bucket Seat		AV5	64H	26H	12H	13H

EXTERIOR COLORS	Color Code	ZY CODE	RECOMMENDED INTERIOR TRIM COLORS			
AUTUMNWOOD, LT (MET)	55U	ZY1	x			x
BEIGE, MED MYSTIQUE (MET)	65U	ZY1	x			x
BLACK, ONYX	41U	ZY1	x			x
BLUE, LT (MET)	27U	ZY1		x		x
GREEN, EMERALD (MET)	43U	ZY1	x			x
GREEN, FAIRWAY	87U	ZY1	x			x
QUICKSILVER (MET)	96U	ZY1		x		x
RED, APPLE	72U	ZY1	x			x
RED, DK CHERRY (MET)	94U	ZY1	x			x
WHITE, SUMMIT	50U	ZY1	x	x		x

*N/A ZR2

ZY1 PAINT WITH B4U

EXTERIOR COLORS	Color Code	ZY CODE	RECOMMENDED INTERIOR TRIM COLORS			
BLACK, ONYX	41U	ZY1	x			x
RED, APPLE	72U	ZY1	x			x
WHITE, SUMMIT	50U	ZY1	x	x		x

ZY7 PAINT (REQS YC3/YC5)

TRIM LEVEL Seat Type	Seat Option	INTERIOR COLORS			
		Beige	Navy	Graphite	Gray
LS Decor					
*Deluxe Cloth Reclining Split Bench Seat	AM6	64H	26H	12H	13H
Deluxe Cloth Reclining High Back Bucket Seats	AV5	64H	26H	12H	13H

EXTERIOR COLORS	Color Code 1	Color Code 2	ZY CODE	RECOMMENDED INTERIOR TRIM COLORS			
AUTUMNWOOD, LT (MET)/BLACK, ONYX	55U	41L	ZY7	x		x	x
AUTUMNWOOD, LT (MET)/BEIGE, MD MYSTIQUE (MET)	55U	65L	ZY7	x		x	
AUTUMNWOOD, LT (MET)/GREEN, EMERALD (MET)	55U	43L	ZY7	x		x	
BEIGE, MD MYSTIQUE (MET)/AUTUMNWOOD, LT (MET)	65U	55L	ZY7	x		x	
BEIGE, MED MYSTIQUE (MET)/BLACK, ONYX	65U	41L	ZY7	x		x	
BLACK, ONYX/AUTUMNWOOD, LT (MET)	41U	55L	ZY7	x		x	
BLACK, ONYX/BEIGE, MED MYSTIQUE (MET)	41U	65L	ZY7	x		x	
BLACK, ONYX/QUICKSILVER (MET)	41U	96L	ZY7			x	x
BLACK, ONYX/RED, APPLE	41U	72L	ZY7	x		x	
BLACK, ONYX/RED, DK CHERRY (MET)	41U	94L	ZY7	x		x	
BLUE, LT (MET)/QUICKSILVER (MET)	27U	96L	ZY7		x	x	x
GREEN, EMERALD (MET)/AUTUMNWOOD, LT (MET)	43U	55L	ZY7	x		x	
GREEN, EMERALD (MET)/BLACK, ONYX	43U	41L	ZY7			x	x
GREEN, EMERALD (MET)/QUICKSILVER (MET)	43U	96L	ZY7			x	x
GREEN, FAIRWAY/BLACK, ONYX	87U	41L	ZY7			x	x
GREEN, FAIRWAY/QUICKSILVER (MET)	87U	96L	ZY7			x	x
QUICKSILVER (MET)/BLACK, ONYX	96U	41L	ZY7			x	x
QUICKSILVER (MET)/BLUE, LT (MET)	96U	27L	ZY7		x	x	x
QUICKSILVER (MET)/GREEN, EMERALD (MET)	96U	43L	ZY7			x	x
RED, APPLE/AUTUMNWOOD, LT (MET)	72U	55L	ZY7	x		x	
RED, APPLE/BLACK, ONYX	72U	41L	ZY7			x	x
RED, APPLE/QUICKSILVER (MET)	72U	96L	ZY7			x	x
RED, DK CHERRY (MET)/AUTUMNWOOD, LT (MET)	94U	55L	ZY7	x		x	
RED, DK CHERRY (MET)/BLACK, ONYX	94U	41L	ZY7			x	x
RED, DK CHERRY (MET)/QUICKSILVER (MET)	94U	96L	ZY7			x	x
WHITE, SUMMIT/AUTUMNWOOD, LT (MET)	50U	55L	ZY7	x		x	
WHITE, SUMMIT/BLUE, LT (MET)	50U	27L	ZY7		x		x
WHITE, SUMMIT/BEIGE, MED MYSTIQUE (MET)	50U	65L	ZY7	x		x	

*N/A ZR2

S-SERIES PICKUP INTRODUCTION

S-SERIES PICKUP

The 1997 Chevrolet S-Series Pickup is available in both Regular and Extended-Cab versions, in two-wheel or four-wheel-drive configurations. The S-Series Pickup is available in two trim levels: the "Standard" trim and the luxury level "LS" trim.

Changes on the S-Series Pickup for 1997 include:

- Revised Keyless Entry System
 - 4L60-E (M30) Automatic Transmission Enhancements
 - DEX-COOL™: Extended Life Engine Coolant Change interval upgraded to 5 years/150,000 miles
 - Frame Stiffness Enhancements to all Two-Wheel Drive Models for Improved Ride
 - New Compact Spare Tire and Wheel size
 - Two New Exterior Colors
 - Floor shift console added on Extended Cab models Equipped with an Automatic Transmission and bucket seats
 - 36mm Decarbon (Orange) Gas Shock Absorbers Replaced with 46mm Bilstein (Blue/Yellow) High Pressure Gas Shock Absorbers on S10603 and S10653 w/ZQ8 suspension
-



S-SERIES PICKUP

MODEL SELECTION SUMMARY

Use the chart below to choose the model that fits your customer's needs. Please note that the Base Payloads shown reflect the maximum allowable weight of cargo that can be carried in a standard model, including occupants. (They are calculated by subtracting curb weight from the GVWR.) To calculate payloads for models with optional equipment, please refer to the WEIGHTS section in the back of this book or consult your 1997 GM PROSPEC. Also, the Maximum Trailer Weights shown below are based on vehicles that are properly equipped. See your Chevrolet Truck Order Guide for specific details.

SERIES	MODEL NUMBER/ BODY CODE/ OPTION CODE	PASSENGER CAPACITY (STD./OPT.)	STANDARD ENGINE/ TRANS.	OPTIONAL ENGINE/ TRANS.	GVWR (LB)	GAWR (LB) FRONT/ REAR	BASE PAYLOAD (LB)	MAXIMUM TRAILER WT./ TONGUE LOAD (LB) PROPERLY EQUIPPED
TWO-WHEEL-DRIVE MODELS								
S-SERIES 4x2 REGULAR-CAB PICKUPS								
S-SERIES SHORT-BOX	CS 10603/E63 Z83/QCE/QCA or ZQ8/QCB	3/2	2.2L L4/M5	2.2L L4/A4 4300 V6/M5/A4	4200	2500/2300	1171	2000/200 5500/650
S-SERIES SHORT- BOX W/OPT. CHASSIS PACKAGE	CS 10603/E63 Z85/QCE/QCA	3/2	2.2L L4/M5	2.2L L4/A4 4300 V6/M5/A4	4600	2500/2700	*	2000/200 5500/650
S-SERIES LONG-BOX	CS 10803/E63 Z85/QCE/QCA	3/2	2.2L L4/M5	2.2L L4/A4	4600	2500/2700	1501	2000/200
S-SERIES LONG-BOX	CS 10803/E63 Z85/QCE/QCA	3/2	4300 V6/M5	4300 V6/A4	4900	2500/2700	*	5500/650
S-SERIES 4x2 EXTENDED-CAB PICKUPS								
S-SERIES EXTENDED CAB SHORT-BOX	CS 10653/E63 Z83/QCE/QCA/ or ZQ8/QCB	5/4	2.2L L4/M5	— 4300 V6/M5/A4	4400	2500/2300	1168	2000/200 5500/650
S-SERIES EXTENDED CAB SHORT-BOX	CS 10653/E63 Z85/QCE/QCA	5/4	2.2L L4/M5	2.2L L4/A4 4300 V6/M5/A4	4600	2500/2700	*	2000/200 5500/650
FOUR-WHEEL-DRIVE MODELS								
S-SERIES 4x4 REGULAR-CAB PICKUPS								
S-SERIES SHORT-BOX	CT 10603/E63 Z83/QCE/QCA or ZR2/QJJ	3/2	4300 V6/M5	4300 V6/A4	4650	2700/2300	1094	5500/650
S-SERIES SHORT-BOX W/OPT. CHASSIS PACKAGE	CT 10603/E63 ZM6/QEB or Z85/QEB/QBF	3/2	4300 V6/M5	4300 V6/A4	5150	2700/2700	*	5500/650
S-SERIES LONG-BOX	CT 10803/E63 Z85/QEB/QBF	3/2	4300 V6/M5	4300 V6/A4	5150	2700/2700	1500	5500/650
S-SERIES 4x4 EXTENDED-CAB PICKUPS								
S-SERIES EXTENDED- CAB SHORT-BOX	CT 10653/E63 Z83/QCA/QCE	5/4	4300 V6/M5	4300 V6/A4	4650	2700/2300	891	5000/650
S-SERIES EXTENDED- CAB SHORT-BOX W/OPT. CHASSIS PACKAGE	CT 10653/E63/ ZR2/QJJ	5/4	4300 V6/M5	4300 V6/A4	4900	2700/2700	*	5000/650
S-SERIES EXTENDED- CAB SHORT-BOX W/OPT. CHASSIS PACKAGE	CT 10653/E63/ Z85/QBF/QEB	5/4	4300 V6/M5	4300 V6/A4	5150	2700/2700	*	5000/650
S-SERIES EXTENDED- CAB SHORT-BOX W/OPT. CHASSIS PACKAGE	CT 10653/E63/ ZM6/QEB	5/4	4300 V6/M5	4300 V6/A4	5150	2700/2700	*	5000/650

* ZQ8 requires Vortec 4300 V6 engine and M50 transmission.

* Please refer to the Weights section at the back of the Tech Guide to determine optional payloads.



S-SERIES PICKUP

POWERTRAINS

Chevrolet offers a variety of engines, transmissions and axle ratios for the S-Series Pickup. The following charts detail basic engine, transmission, and axle specifications. See your 1997 Chevrolet Truck Order Guide for specific details.

ENGINES					
	2.2L L4	VORTEC 4300 V6		VORTEC 4300 V6	
Engine Order Code	LN2	LF6		L35	
Availability	S-10 4x2 only	4x2	4x4	4x2	4x4
SAE Net Horsepower @ rpm	118 @ 5200	175 @ 4400	180 @ 4400	180 @ 4400	190 @ 4400
SAE Net Torque lb-ft @ rpm	130 @ 2800	240 @ 2800	240 @ 2800	245 @ 2800	250 @ 2800
Fuel System	SFI	SFI		SFI	
Clutch Size in. (mm)	9.13 (232 mm)	11.02 (280 mm)		11.02 (280 mm)	
Standard Battery Cold Cranking Amps @ 0° F	525	525		525	
Standard Alternator Max. Cap. (Amps)	100	100		100	

TRANSMISSIONS			
	MANUAL		AUTOMATIC
	MANUAL 5-SPEED W/OVERDRIVE	MANUAL 5-SPEED W/OVERDRIVE	ELECTRONIC AUTOMATIC 4-SPEED OVERDRIVE W/TORQUE CONVERTER CLUTCH (4L60-E)
Transmission Order Code	MW2	M50	M30
Engine Application (Order Code)	2.2L L4 (LN2)	VORTEC 4300 V6 (LF6/L35)	2.2L L4/VORTEC 4300 V6 (LN2/LF6/L35)
Synchronized Speeds	1/2/3/4/5	1/2/3/4/5	—
Gear Ratios			
First	3.94	3.49	3.06
Second	2.37	2.16	1.63
Third	1.49	1.40	1.00
Fourth	1.00	1.00	0.70
Fifth	0.83	0.78	—
Reverse	3.65	3.55	2.29
Shaft Center Distance (mm)	76	85	—

AXLES						
	REAR AXLE				FRONT AXLE (4X4 ONLY)	
	VORTEC 4300 V6		2.2L L4/VORTEC 4300 V6		VORTEC 4300 V6	
Make	GM				GM	
Capacity (lb)	2900				2700	
Pinion and Ring Gear Type	Hypoid				Hypoid	
Engine Availability	VORTEC 4300 V6	VORTEC 4300 V6	2.2L L4/VORTEC 4300 V6	2.2L L4	VORTEC 4300 V6	
Axle Ratio Code	GU4	GU6	GT4	GT5	GU4	GU6 GT4
Ratio	3.08	3.42	3.73	4.10	3.08	3.42 3.73
Pinion Teeth	13	12	11	10	13	12 11
Ring Gear Teeth	40	41	41	41	40	41 41
Ring Gear Diameter (in.)	7.62 ¹	7.62 ¹	7.62 ²	7.62	7.25	7.25 7.25

Note: Axle ratio availability depends on model, powertrain, and emissions selected. See your 1997 Chevrolet Truck Order Guide for details.

¹L35 w/M50 transmission uses 8.5 in. ring.

²ZR2 Wide Stance uses 8.5 in. ring gear diameter.



S-SERIES PICKUP

TRIM LEVELS

Chevrolet offers S-Series Pickup Regular-Cab in two trim levels: "Standard" and "LS." The "LS" trim level is standard on Extended-Cab models. The following chart details major standard features. See your 1997 Chevrolet Truck Order Guide for specific details.

CHASSIS EQUIPMENT		STANDARD (BASE) REG.-CAB ONLY	LS (YC3)
KEY: ■ = STANDARD, — = NOT INCLUDED			
BRAKES	Power-assisted; front disc, rear drum with four-wheel anti-lock system. Includes brake/transmission shift interlock with automatic transmission.	■	■
EXHAUST	Aluminized stainless steel exhaust system.	■	■
FRAME	All-welded ladder-type, channel design and boxed front-end section.	■	■
FUEL TANK	19 gallon (approx.) capacity.	■	■
REAR AXLE	Hypoid, semi-floating.	■	■
SHOCK ABSORBERS	Front: 32mm; Rear: 32mm, 46mm Front and Rear with ZM6, ZQ8 and ZR2 Chassis Package.	■	■
STABILIZER BAR	Front: 25mm with Z83 and ZM6 Chassis Package. Front: 28mm with Z85 (4WD) and ZR2 Chassis Package. Front: 29mm with Z85 (2WD). Front: 33mm with ZQ8 Chassis Package. Rear: 23mm with ZQ8 Chassis Package.	■	■
STEERING	Integral power. (Variable ratio, 15/13:1 on ZQ8.)	■	■
SUSPENSION, FRONT	4x2: Independent with computer-selected coil springs. 4x4: Independent with computer-selected torsion bars.	■	■
SUSPENSION, REAR	Two-stage semi-elliptic multileaf springs.	■	■
TOW HOOKS	Two front-mounted on 4x4 only.	■	■
EXTERIOR EQUIPMENT			
AIR DAM	Matches bumper color.	■	■
BUMPERS, FRONT AND REAR STEP	Dark gray with dark gray end caps. Color-keyed with color-keyed end caps on 2WD models. Dark gray with dark gray end caps on 4WD models.	■	—
GLASS	Tinted Solar-Ray.	■	■
GRILLE	Dark gray. (Body Color w/B4U S10603 only) Chrome and dark gray. Bright deluxe front application package.	■	—
HEADLAMPS	Single rectangular halogen. Sealed beam.	■	■
HORN	Dual note.	■	■
INSULATION	Underhood.	■	■
LAMPS	Engine compartment and center high-mounted stop lamp.	■	■
LICENSE PLATE	Front bracket.	■	■
MIRRORS	Black RH and LH below-eveline type. Head size 5.5" x 7.5	■	■
MOLDING	Black windshield surround.	■	■
PICKUP BOX	Two-tier loading with cargo tie-down loops in each corner.	■	■
RUNNING LAMPS	Daytime.	■	■
SPARE TIRE AND WHEEL	Compact spare tire and wheel mounted under bed. (Full-size with ZM6 and ZR2)	■	■
SPARE TIRE CARRIER	Winch-type carrier mounted under frame at rear.	■	■
TIRES	P205/75R15 BW all-season steel-belted radials. (P235/65R16 with ZQ8.)	■	■
WHEELS	15.0" x 7.0" steel painted argent with black center cap (2-wheel-drive model). 15.0" x 7.0" steel painted argent with black center cap and trim ring (2-wheel-drive model). 15.0" x 7.0" steel painted argent with black center cap and trim ring (4-wheel-drive model). (16.0" x 8.0" aluminum wheels with ZQ8.)	■	■
WINDSHIELD WIPERS	Intermittent.	■	■
WIRING	Seat belt harness (for all) and purposes included.	■	■
INTERIOR EQUIPMENT			
AIR BAG	Driver's. (Always wear your safety belts.)	■	■
ARMRESTS	RH and LH padded integral with door panels.	■	■
CAB BACK PANELS	Carpeted. Includes Scotchgard™ Protector.	■	■
CIGARETTE LIGHTER	Located on instrument panel. Includes ashtray light. Located on instrument panel. Includes ashtray light and two auxiliary power outlets.	■	—
COAT HOOKS	RH and LH on Regular-Cab models. Foldaway on Extended-Cab models.	■	■
CUPHOLDERS	Two mounted to seat cushion.	■	■
DOVE LAMP	Door-operated with front floor courtesy lamp.	■	■
DOOR SILL PLATE	Black.	■	■
DOORS	Side door guard beams.	■	■
DOOR PANELS	One-piece molded plastic with padded integral armrests. LH and RH molded map pockets. Molded plastic with soft cloth upper insert, padded integral armrests. LH and RH molded map pockets.	■	—
FLOOR COVERING	Embossed dark gray full-floor vinyl mat. Color-keyed full-floor carpeting with Scotchgard™ Fabric Protector.	■	■



S-SERIES PICKUP

INTERIOR EQUIPMENT (CONT.)			STANDARD (BASE)	LS (YC3)
KEY: ■ = STANDARD, — = NOT INCLUDED			REG. CAB ONLY	
GAGES	Including voltmeter, oil pressure and engine temperature gages, fuel gage, trip odometer and speedometer, warning lights for seat belts, parking brake, direction/hazard signals and high beam.		■	■
GLOVE BOX	Non-locking with door-activated light and cupholders.		■	■
GRAB HANDLE	Passenger side.		■	■
HEADLAMP WARNING BUZZER	Headlamps on.		■	■
HEATER	Outside air with windshield and side window defoggers.		■	■
HEADLINER	Full coverage, foam-backed with color-keyed cloth cover.		■	■
INSULATION	Provided on dash panel, doors, cab back, floor and hood, instrument panel and cowl-to-fender seals.		■	■
MIRRORS	10-inch rearview. 10-inch rearview mirror with dual reading lamps and illuminated entry feature.		■	—
RADIO	ETR AM/FM stereo with digital clock, two 4" x 6" diameter front dash speakers and two 6" diameter door speakers. (Two 6" diameter door speakers and two 4" x 10" speakers located in the rear quarter panel trim on Extended-Cab)		■	■
SEATS	3-passenger Custom Vinyl front bench with folding backrest and head restraints with dual cupholders. Regular-Cab: 60/40 Deluxe Cloth split bench with recliners. Includes armrest with storage compartment. (Scotchgard™ Fabric Protector on all cloth seats). Extended-Cab: 60/40 Deluxe Cloth split bench with recliners. Includes armrest with storage compartment passenger-side easy-entry feature and rear vinyl folding jump seats.		■	—
STEERING WHEEL	Deluxe four-spoke, black.		■	■
STORAGE POCKET	In instrument panel under radio.		■	■
SUNSHADES	RH and LH padded, color-keyed cloth with map strap and RH vanity mirror. RH and LH padded, color-keyed cloth includes slider extensions and RH and LH illuminated vanity mirrors.		■	—
TOOLS	Mechanical jack and wheel wrench located in storage compartment on floor behind front seat. Cover includes drink holders on Extended-Cabs.		■	■
WINDOWS	Extended-Cab: Swing-out rear quarter windows.		—	■

PREFERRED EQUIPMENT GROUPS

Preferred Equipment Groups (PEGs) are convenient option packages that can save your customers money. They would pay appreciably more by buying all the options in a Preferred Equipment Group as individual options. (Savings based on a comparison of Manufacturer's Suggested Retail Price of option packages versus MSRP of individual options purchased separately). See your 1997 Chevrolet Truck Order Guide and Vehicle Price Schedule for specific information and prices.

OPTIONS

These options can be ordered individually in addition to the Preferred Equipment Groups, if not already included. See your 1997 Chevrolet Truck Order Guide for specific availability and restrictions. The Option Code is listed in **bold**.

Air Conditioning	C60	Covering Floor Carpet (Available with Base Regular Cab models).....	B30	Lock. Remote Keyless Entry System	AU0
Air Darn w/Fog Lamps (4x2 only)	ANL	Emissions Systems		Paint, Exterior	
Axle, Rear		California	YF5	Solid	ZY1
3.08 Ratio	GU4	Federal	FE9	Custom Two-Tone	ZY7
3.42 Ratio	GU6	Massachusetts/New York	NG1	Radio Equipment	
3.73 Ratio	GT4	Federal Emissions Override	NC7	Radio Delete	
4.10 Ratio (4x2 only)	GT5	Cal./Mass./N.Y. Emissions Override	NB8	(Available with PEG 1SG only)	UL5
Locking Differential	G80	Engines		ETR AM/FM Stereo w/Seek-Scan, and Digital Clock (Requires base PEG 1SG)	UM7
Battery, Heavy Duty (690 CCA)	UA1	3.2L SFI L4	LN2	ETR AM/FM Stereo Radio w/Seek-Scan, Stereo Cassette, Digital Clock, and four speakers	UM6
Body, Stepside (Sportside pickup box).....	E62	VORTEC 4300 SFI V6	LF6	ETR AM Stereo/FM Stereo Radio w/Seek-Scan/Stereo Cassette w/Search/Repeat, Graphic Equalizer/Digital Clock, and four speakers	UX1
Bumper, Rear Step (Available with B4U or PEG1SG only)	VF6	VORTEC 4300 SFI V6	L35	ETR AM/FM Stereo Radio w/Digital Clock, Seek-Scan, Compact Disc Player, and four speakers	U1C
Chassis Packages		Exterior Appearance Package (Includes front and rear color-keyed bumpers with color-keyed end caps, dark gray rub strips and bright inserts. Also includes dark gray body-side moldings with bright insert and bright wheel opening moldings, cast aluminum wheels and "CHEVROLET" tailgate applique)	YC5	Seat Options	
Wide Stance, Sport Performance (CT10603 and CT10653 only) (includes full-size spare)	ZR2	Floor Mats, front	B32	Bench Seat	A52
Increased Capacity	ZB5	GWWR Ratings		60/40 Reclining Split Bench	AM6
Off Road, (T10603, CT10653 only) (includes full-size spare)	ZM6	4200 lb	C5T	Reclining High-Back Bucket Seats (Requires Console)	AV5
Solid/Smooth Ride, (N/A CT10803 or CS10803)	ZB3	4400 lb	C3A	Shield Package (4x4 only) Includes transfer case and front differential skid plates, fuel tank and steering linkage shields	ZM5
Sport, (S10603 only)	ZQ8	4600 lb	C5D		
Cold Climate Package (includes heavy-duty battery, engine block heater)	V10	4650 lb	C5X		
Convenience Groups		4900 lb	C5A		
Tilt Steering and Speed Control	ZQ3	5150 lb	C6F		
Power door locks, Power Windows and Electric Remote Mirrors	ZQ6				



S-SERIES PICKUP

OPTIONS (CONT.)

SS Sport Package, CS10603 only (Reqs L35 Engine and M30 Trans) (see Order Guide for detailed description)

B4U

Steering Wheel, Leather Wrapped

NP5

Tachometer (Included with L35 Engine)

U16

Third Door (S/T 10653 only)

E24

Transfer Case, Electronic Shift (4x4 only)

NP1

Transmissions

5-speed manual overdrive NVG

(Reqs. LN2)

MW2

5-speed manual overdrive NVG

(Reqs. LF6/L35)

M50

Electronic automatic 4-speed overdrive (Includes brake/transmission shift interlock)

M30

Wheels

Aluminum, Argent (4x2 only)

N60

Cast Aluminum (4x4 only)

N90

Special Aluminum (4x4 only)

5P2

Aluminum, Painted Medium Gray

PA3

Window, Deep Tinted

AJ1

Window, Sliding Rear

A28

TIRES

**KEY: ALS = ALL-SEASON SBR = STEEL-BELTED RADIAL PLY BW = BLACKWALL WL = WHITE LETTERED
OOR = ON-OFF ROAD WOL = WHITE OUTLINE LETTERED**

TIRE DESCRIPTION		ORDERING CODE
P205/75R15 BW	ALS/SBR	QCE
P205/75R15 WOL	ALS/SBR	QCA
P235/55R-16 BW	ALS/SBR	QCB
P235/70R15 BW	ALS/SBR	QBF
P235/75R15 WOL	OOR/SBR	QEB
31 X 10.5R-15L BW	OOR/SBR	QJJ

DIMENSIONS

MODEL	S-SERIES (REGULAR-CAB)	S-SERIES (REGULAR-CAB)	S-SERIES (EXTENDED-CAB)	S-SERIES (REGULAR-CAB)	S-SERIES (REGULAR-CAB)	S-SERIES (EXTENDED-CAB)
MODEL NUMBER	CS10603/E63	CS10803/E63	CS10653/E63	CT10603/E63	CT10803/E63	CT10653/E63

EXTERIOR DIMENSIONS

BODY						
Wheelbase (in.)	L101	108.3	117.9	122.9	108.3	117.9
Overall Length (in.)	L103	188.6	204.6	203.3	188.6	204.6
Overall Height (in.)	H431	62.1	62.1	62.2	63.8	65.4
Maximum Width (in.)	W103	67.9	67.9	67.9	67.9	67.9
Bumper to Axle (in.)						
Front (w/o license bracket)	L104	34.5	34.5	34.5	34.5	34.5
Rear	L105	45.9	52.2	45.9	45.9	45.9
Cab-to-Axle (in.)	L404	37.4	47.1	37.4	37.4	47.1
Cab to End of Frame (in.)	L505	72.8	88.8	72.8	72.8	88.8
Bumper to Back of Cab (in.)	L403	105.3	105.3	119.9	105.3	105.3
Ground to Top of Rear Load Floor (in.)	H502	27.5	28.2	28.0	28.5	29.4
Ground Clearance (in.)						
Front	H148	9.1	8.7	9.1	8.6	10.6
Rear	H153	7.2	6.7	7.2	7.5	7.5
Turning Diameter Curb-to-Curb (ft.)		36.9	39.9	41.3	37.3	40.1
Track Width (in.)		54.5	54.5	54.5	57.2	57.2
CARGO BOX						
Length at Floor (in.)	L505	72.8	88.8	72.8	72.8	88.8
Inside Width at Top Rear (in.)	W204	54.9	54.9	54.9	54.9	54.9
Inside Width at Floor (in.)	W203	54.9	54.9	54.9	54.9	54.9
Inside Width between Wheelhousings (in.)	W201	40.3	40.3	40.3	40.3	40.3
Inside Height at Rear Axle (in.)		17.1	17.1	17.1	17.1	17.1
Tailgate Width (in.)		54.9	54.9	54.9	54.9	54.9
Cargo Volume (cu ft)		39.4	48.1	39.4	39.4	48.1
SIGN PANEL AREA (in.)		15 x 46.25	15 x 46.25	16 x 66.5	15 x 46.25	15 x 46.25

INTERIOR DIMENSIONS

CAB						
Headroom (in.)	H61	39.5	39.5	39.6	39.5	39.6
Legroom (in.)	L34	42.4	42.4	42.4	42.4	42.4
Shoulder Room (in.)	W3	57.2	57.2	57.2	57.2	57.2
Hip Room (in.)	W5	52.0	52.0	52.0	52.0	52.0
Cargo Volume (cu ft) (in-cab storage area)		—	—	17.3	—	—

¹ 43.2 inches with seat in rearmost position.



11

