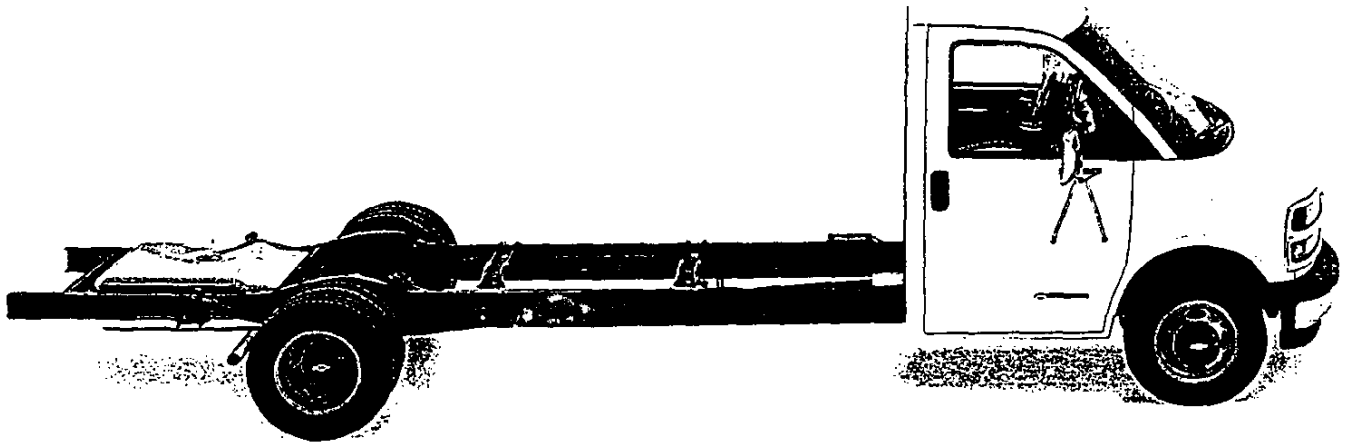
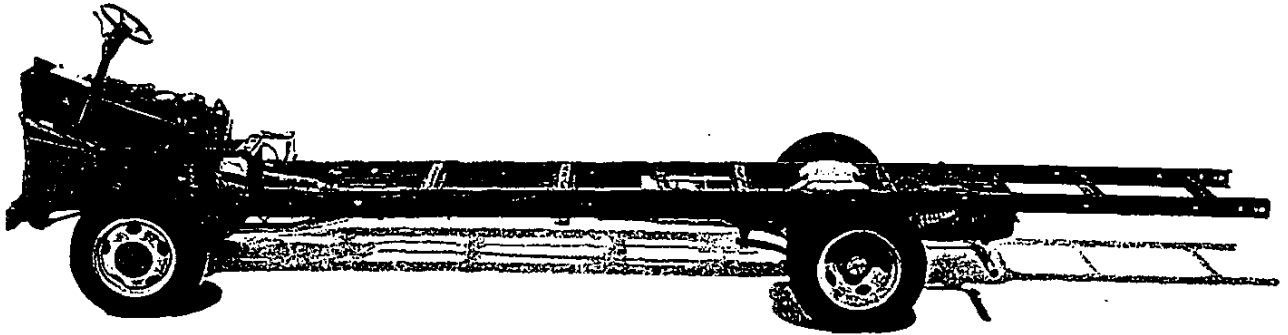




1998 CHEVROLET  
**MOTOR HOME  
CHASSIS**

**P32 Motor Home Chassis.**



G3500 Series RV Cutaway Van in Summit White.

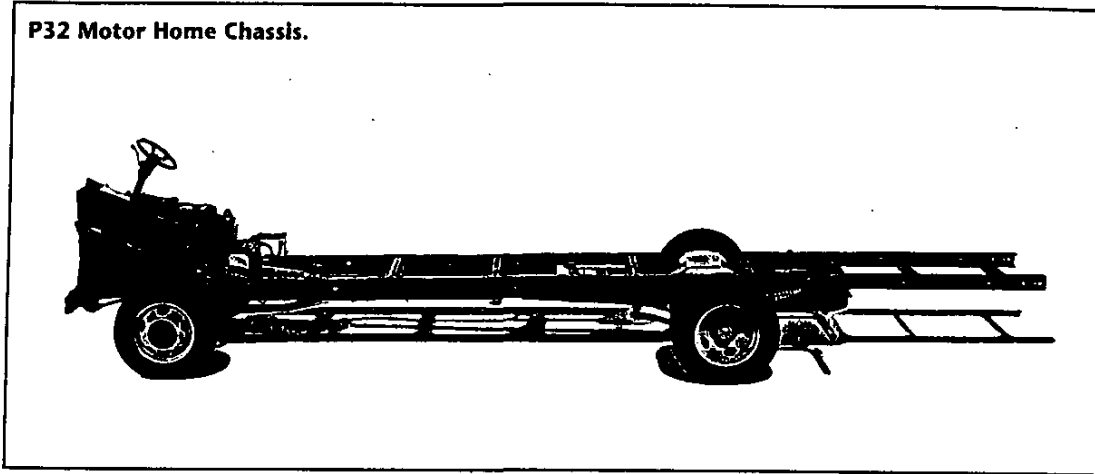
**LIKE A ROCK**



# P-Chassis

Dealer Order Guide inserts are your first look at Chevy Truck Models for 1998. Overall improvements, changes and deletions are highlighted. Use these inserts to assist you in ordering your initial shipments. NOTE: This information is preliminary and is subject to change.

## P32 Motor Home Chassis.



### The P32 Motor Home Chassis *(image above)*

This tough, dependable chassis is designed for a long service life. Available in several wheelbase lengths, GVWRs and either gasoline or diesel power.

### New for 1998

- 21,000–22,500 lb. GVWR heavy-duty motor home chassis (class 6) with 26,000 lbs. GCWR
- 4L80-E automatic transmission enhancements include an electronically controlled converter clutch for improved efficiency
- Pull-button for parking brake replaces the parking brake foot pedal, for easier operation
- Instrument cluster includes trip odometer, electronic PRNDL and more.

### Other Information on Significant Features

- Standard Vortec 7400 V8 SFI (L29) gas engine for impressive performance offers 290 hp and 410 lb.-ft. of torque
- Standard four-speed electronically controlled automatic transmission provides smooth, consistent shifts
- Proven 6.5 Liter V8 Turbo-Diesel power (L65) is optional in the P32; it offers 195 hp and 430 lb.-ft. of torque.

### Models

Model #	Wheelbase	Standard Engine	GVW Rating*
CP31432	158.5"	Vortec 7400 SFI V8	12,300/14,800 lbs.
CP31832	178"	Vortec 7400 SFI V8	14,800/16,500 lbs.
CP31932	190"	Vortec 7400 SFI V8	14,800/16,500 lbs.
CP32032	208"	Vortec 7400 SFI V8	14,800/16,500 lbs.
CP32012	208"	Vortec 7400 SFI V8	21,000/22,500 lbs.
CP32132	228"	Vortec 7400 SFI V8	16,500 lbs.

\*Gross Vehicle Weight includes vehicle, passengers, equipment and cargo.

## MOTOR HOME CHASSIS EQUIPMENT SUMMARY

### STANDARD CHASSIS FEATURES

AIR CONDITIONING:	PROVISIONS
ALTERNATOR:	124 AMPS
BATTERY:	600 COLD CRANKING AMPS
BRAKES:	POWER HYDRAULIC FRONT DISC/REAR DRUM INCLUDING 12300 LB GVWR; POWER HYDRAULIC FRONT AND REAR DISC OVER 12300 LB GVWR 4-WHEEL ANTI-LOCK BRAKES ON ALL VEHICLES
COOLING:	ENGINE OIL
SPEED CONTROL:	ELECTRONIC
STABILIZER BAR:	1.25" FRONT
STEERING:	TILT-WHEEL
WHEELS:	16" X 6" GRAY STEEL (6) (CP31432 Model Only) 19.5" X 6" GRAY STEEL (6) (CP31832-31932-32032-32132-32012 Models Only)
FUEL TANK:	75 GALLON (CP32012 MODEL) 40 GALLON (N/A CP32012)

**MOTOR HOME CHASSIS**

**MODEL AND BODY**

Description	Model No	Body	WheelBase
Motor Home .....	CP31432	ZW9	158.5"
Motor Home .....	CP31832	ZW9	178.0"
Motor Home .....	CP31932	ZW9	190.0"
H.D.Motor Home .....	CP32012	ZW9	208.0"
Motor Home .....	CP32032	ZW9	208.0"
Motor Home .....	CP32132	ZW9	228.0"

**GVWR SELECTOR (MUST SPECIFY ) (SEE AXLE/SUSPENSION SELECTOR)**

GVW Option Required	GVW Rating (lbs)	# GAWR (lbs)		Minimum Equipment Required For GVW Rating	
		Front	Rear	Chassis Equipment	
C7N	12300	4880	7500	Reqs YWG Tires	(P31432 )
C3D	14800	5500	10000	Reqs YTN Tires	(P31432-31832-31932-32032)
C7R	16500	5500	11000	Reqs YTN Tires	(P31832-31932-32032-32132)
C7V	21000	7500	13500	Reqs YTY Tires	(P32012)
C7T	22500	8000	14500	Reqs YRL Tires	(P32012)

# GAWR'S Shown are the minimum for each axle with equipment listed. Other GAWR'S are Available and they are determined as the minimum capacity of either axle, springs or tires.

**AXLE/SUSPENSION SELECTOR (MUST SPECIFY Front and Rear Axle and Suspension and Rear Axle Ratio)**

GVW OPTION	REAR AXLE RATIO	FRONT AXLE	FRONT SUSPENSION	REAR AXLE	REAR SUSPENSION
C7N	005/066	FN6	FL7	GL1	GN6
C3D	005/006*	FN8	FL9	GL2	GP4
C7R	006	FN8	FL9	GL4	GP4
C7V	004	FL1	F10	GL8	GQ5
C7T	058	FL1	FK8	GL9	GQ7

\*Requires GTY Wide Track Axle

FRONT AXLE		FRONT SUSPENSION		REAR AXLE		REAR SUSPENSION	
FN6	5000 LBS	FL7	5000 LBS	GL1	7900 LBS	GN6	7500 LBS
FN8	5500 LBS	FL9	5500 LBS	GL2	10000 LBS	GP4	11000 LBS
FL1	8100 LBS	F10	7500 LBS	GL4	11000 LBS	GQ5	13500 LBS
		FK8	8000 LBS	GL8	13500 LBS	GQ7	14500 LBS
				GL9	15000 LBS		

**POWER TEAMS (MUST SPECIFY Engine, Transmission )**

(Consult GVWR Selector for Minimum Equipment Required)

ENGINE	TRANSMISSION	GVWR
AUTO		
<b>P31432</b>		
L29 7400 Vortec V8 SFI	MT1	12300
	MT1	14800
L65 Diesel-Turbo Charged 6.5 Liter V8	MT1	12300
	MT1	14800
<b>P31832-31932-32032-32132</b>		
L29 7400 Vortec V8 SFI	MT1	14800
	MT1	16500
L65 Diesel-Turbo Charged 6.5 Liter V8	MT1	14800
	MT1	16500
<b>P32012</b>		
L21 7400 Vortec V8 SFI	MT9	21000
	MT9	22500

**TIRES (MUST SPECIFY Front, Rear; Spare Optional) (Refer VPS For Pricing)**

Description	Highway		
	Front	Dual Rear	Spare
<b>TUBELESS STEEL BELTED RADIAL</b>			
7.50-R16-D B/W	XWG	YWG	ZWG
225/70R19.5-F B/W	XTN	YTN	ZTN
245/70R19.5-G B/L	XTY	YTY	ZTY
235/80R22.5-G B/L	XRL	YRL	ZRL

B/W = Blackwall  
B/L = Black Letter

# MOTOR HOME CHASSIS

	BASEPEG
Preferred Equipment Group 1	1
Standard Body	S
	A
	x

## ADDITIONAL OPTIONS

EN2	AIR CONDITIONING PROVISION DELETE: AXLE: FRONT (MUST SPECIFY)
FN6	5000 lbs
FN8	5500 lbs
FL1	8100 lbs
	AXLE: REAR (MUST SPECIFY)
GL1	7900 lbs
GL2	10000 lbs
GL4	11000 lbs
GL8	13500 lbs
GL9	15000 lbs
	AXLE RATIO: (MUST SPECIFY)
004	4.78
005	4.56
006	4.63
058	5.13
066	4.10
GTY	AXLE, WIDE TRACK: (N/ACP32012-31432) ( Reqs 006 Ratio)
	EMISSIONS: (MUST SPECIFY)
FE9	Federal Emission Requirements
NG1	New York, Massachusetts or Connecticut Emission Requirement
YF5	California Emission Requirements
NB8	CA, MA, NY or CT Emission Override (Reqs FE9 Emissions)
NC7	Federal Emission Override (Reqs YF5 or NG1 Emissions)
	ENGINES: (MUST SPECIFY) (Refer Power Teams Chart for Availability)
L21	7400 Vortec V8 SFI (CP32012 Only)
L29	7400 Vortec V8 SFI
L65	V8 6.5 Liter Turbo Diesel
	GVWR : (MUST SPECIFY)
C7N	12,300#
C3D	14,800#
C7R	16,500#
C7V	21,000#
C7T	22,500#

RHQ HARNESS ASSEMBLY: Tail and Stop Lamp  
 HPR HEADLAMPS, DUAL RECTANGULAR  
 PARTS PACKAGES: (MUST SPECIFY)  
 EK0 Loose Parts Four Winds (N/A CP32012-32132)  
 EK3 Complete Shipped Loose Parts (Base)  
 EJ2 Loose Parts Fleetwood (N/A w/L65 Eng) (N/A CP32012)  
 EJ6 Loose Parts Holiday Rambler (N/A w/L65 Eng)  
 EJ8 Loose Parts Fleetwood (N/A w/L65 Eng) (N/A CP32012)  
 SUSPENSION: FRONT (MUST SPECIFY)  
 FL7 5000 lbs  
 FL9 5500 lbs  
 FK8 8000 lbs (I-Beam)  
 F10 7500 lbs (I-Beam)  
 SUSPENSION: REAR (MUST SPECIFY)  
 GN6 7500 lbs  
 GP4 11000 lbs  
 GQ5 13500 lbs  
 GQ7 14500 lbs  
 TANK FUEL:  
 NN4 Approx. 60-Gallon Capacity (N/A CP32012)  
 NJ9 Approx. 75-Gallon Capacity, LH or RH Fill (CP31832-CP31932-CP32032-CP32132 Only)  
 (Std CP32012 Model)  
 TIRES: (Refer Tire Chart for Availability; Vehicle Price Schedule for Pricing)  
 TRANSMISSION: (MUST SPECIFY)  
 MT1 4-Speed Electronically Controlled Automatic with Overdrive HD (Incls Trans Oil Cooler)  
 MT9 Auto Allison AT542 (CP32012 Only)

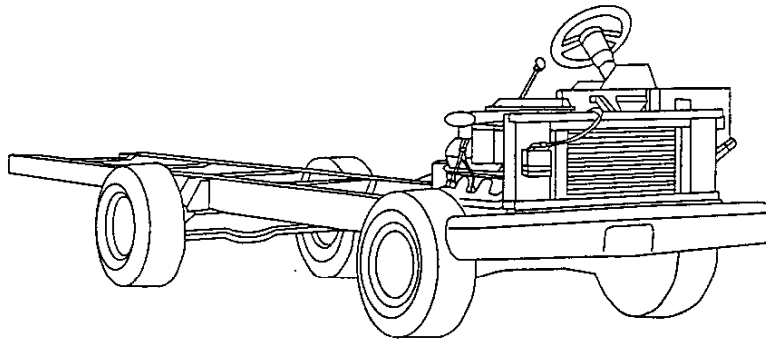


# P30 F.C. CHASSIS AND MOTOR HOME CHASSIS INTRODUCTION

## P30 F.C. CHASSIS AND MOTOR HOME CHASSIS

Changes on the P30 F.C. Chassis and Motor Home Chassis for 1998 include:

- New Motor Home Model P32012 Featuring a 208-inch Wheelbase at 21,000-lb GVWR with an optional 22,500-lb GVWR
- New Instrument Cluster (features include track distance traveled, low and high oil pressure light replaced w/ check gages light, electronic PRNDL w/ automatic transmission, gages include oil, voltage, temperature, speedometer and tachometer)
- 4-speed 4L80-E Automatic Transmission Enhancements (MT1)
- New Electric Dash Mounted Pull Button Parking Brake (P30032 w/16,500 GVWR)



# P30 F.C. CHASSIS AND MOTOR HOME CHASSIS

## MODEL SELECTION SUMMARY

Use the chart below to choose the model that fits your customer's needs. Please note that the Base Payloads shown reflect the maximum allowable weight that can be carried in a standard model, including occupants. (They are calculated by subtracting curb weight from GVWR.) To calculate payloads for models with optional equipment, please refer to the WEIGHTS section in the back of this book or consult your 1998 GM PROSPEC. See your Chevrolet Truck Order Guide for specific details.

SERIES	MODEL NUMBER/ BODY CODE/ OPTION CODE	PASSENGER CAPACITY (STD./OPT.)	STANDARD ENGINE/ TRANS.	OPTIONAL ENGINE/ TRANS.	GVWR (LB)	GAWR (LB) FRONT/ REAR	BASE PAYLOAD (LB)	MAXIMUM TRAILER WT./ TONGUE LOAD (LB) PROPERLY EQUIPPED
<b>P30 FORWARD CONTROL CHASSIS (42 MODELS)</b>								
110-INCH WHEELBASE SINGLE REAR WHEELS	CP30542/ZW9/ YHF tires	—	4300 V6/A4	—	8600	3650/5300	5093	—
125-INCH WHEELBASE SINGLE REAR WHEELS	CP30842/ZW9/ YHF tires	—	4300 V6/A4	—	8600	3650/5300	*	—
125-INCH WHEELBASE SINGLE REAR WHEELS	CP30842/ZW9/ YYN tires	—	4300 V6/A4	5700 V8/M5/A4 6.5L V8/M5/A4	9400	4000/6084	5798	—
125-INCH WHEELBASE DUAL REAR WHEELS	CP30842/ZW9/ R05	—	4300 V6/A4	5700 V8/M5/A4 6.5L V8/M5/A4	10000	3880/7900	*	—
	CP30842/ZW9/ R05	—	4300 V6/A4	5700 V8/M5/A4 6.5L V8/M5/A4	11000	4000/7900	*	—
	CP30842/ZW9/ GL4/R05	—	5700 V8/M5	5700 V8/A4 6.5L V8/M5/A4	12000	4500/11000	*	—
	CP30842/ZW9/ GL4/R05	—	5700 V8/M5	5700 V8/A4 6.5L V8/M5/A4	14100	4500/11000	*	—
125-INCH SCHOOL BUS CHASSIS	CP30842/ZW9/ FS3/B3D/GL4 R05	—	5700 V8/M5	5700 V8/A4 6.5L V8/M5/A4	14500	5000/11000	10463	—
133-INCH WHEELBASE SINGLE REAR WHEELS	CP31042/ZW9/ YYN tires	—	4300 V6/A4	5700 V8/M5/A4 6.5L V8/M5/A4	9400	4000/6084	5786	—
133-INCH WHEELBASE DUAL REAR WHEELS	CP31042/ZW9/ R05	—	4300 V6/A4	5700 V8/M5/A4 6.5L V8/M5/A4	10000	3880/7900	*	—
	CP31042/ZW9/ R05	—	4300 V6/A4	5700 V8/M5/A4 6.5L V8/M5/A4	11000	4000/7900	*	—
	CP31042/ZW9/ GL4/R05	—	5700 V8/M5	5700 V8/A4 6.5L V8/M5/A4	12000	4500/11000	*	—
	CP31042/ZW9/ GL4/R05	—	5700 V8/M5	5700 V8/A4 6.5L V8/M5/A4	14100	4500/11000	*	—

See the following page for additional P30 Forward Control Chassis models and Motor Home Chassis Models.  
\* Please refer to the Weights section at the back of the Tech Guide to determine optional payloads.

## P30 F.C. CHASSIS AND MOTOR HOME CHASSIS

SERIES	MODEL NUMBER/ BODY CODE/ OPTION CODE	PASSENGER CAPACITY (STD./OPT.)	STANDARD ENGINE/ TRANS.	OPTIONAL ENGINE/ TRANS.	GVWR (LB)	GAWR (LB) FRONT/ REAR	BASE PAYLOAD (LB)	MAXIMUM TRAILER WT./ TONGUE LOAD (LB) PROPERLY EQUIPPED
<b>P30 FORWARD CONTROL CHASSIS (42 MODELS) (CONT.)</b>								
<b>133-INCH SCHOOL BUS CHASSIS</b>	CP31042/ZW9/ FS3/B3D/GL4 R05	—	5700 V8/M5	5700 V8/A4 6.5L V8/M5/A4	14500	5000/11000	10450	—
<b>157-INCH WHEELBASE SINGLE REAR WHEELS</b>	CP31442/ZW9/ YYN tires	—	4300 V6/A4	5700 V8/M5/A4 6.5L V8/M5/A4	9400	4000/6084	5636	—
<b>157-INCH WHEELBASE DUAL REAR WHEELS</b>	CP31442/ZW9/ R05	—	4300 V6/A4	5700 V8/M5/A4 6.5L V8/M5/A4	10000	3880/7900	*	—
	CP31442/ZW9/ R05	—	4300 V6/A4	5700 V8/M5/A4 6.5L V8/M5/A4	11000	4000/7900	*	—
	CP31442/ZW9/ GL4/R05	—	5700 V8/M5	5700 V8/A4 6.5L V8/M5/A4	12000	4500/11000	*	—
	CP31442/ZW9/ GL4/R05	—	5700 V8/M5	5700 V8/A4 6.5L V8/M5/A4	14100	4500/11000	*	—
<b>157-INCH SCHOOL BUS CHASSIS</b>	CP31442/ZW9 FS3/B3D/GL4 R05	—	5700 V8/M5	5700 V8/A4 6.5L V8/M5/A4	14500	5000/11000	10300	—
<b>178-INCH WHEELBASE DUAL REAR WHEELS</b>	CP31842/ZW9	—	4300 V6/A4	5700 V8/M5/A4 6.5L V8/M5/A4	10000	3880/7900	5995	—
	CP31842/ZW9	—	4300 V6/A4	5700 V8/M5/A4 6.5L V8/M5/A4	11000	4000/7900	*	—
	CP31842/ZW9/ GL4	—	5700 V8/M5	5700 V8/A4 6.5L V8/M5/A4	12000	4500/11000	*	—
	CP31842/ZW9/ GL4	—	5700 V8/M5	5700 V8/A4 6.5L V8/M5/A4	14100	4500/11000	*	—
<b>P30 MOTOR HOME CHASSIS (32 &amp; 12 MODELS)</b>								
<b>158.5-INCH WHEELBASE</b>	CP31432/ZW9/ YWG or YNP tires	—	7400 V8/A4	6.5L V8/A4 Turbo Diesel	12300	4880/7500	7951	—
	CP31432/ZW9 YNP or YTN tires	—	7400 V8/A4	6.5L V8/A4 Turbo Diesel	14800	5500/10000	*	—
<b>178.0-INCH WHEELBASE</b>	CP31832/ZW9 and YNP or YTN tires	—	7400 V8/A4	6.5L V8/A4 Turbo Diesel	14800	5500/10000	10072	—

See the following page for more P30 Motor Home Chassis models.

\* Please refer to the Weights section at the back of the Tech Guide to determine optional payloads.

# P30 F.C. CHASSIS AND MOTOR HOME CHASSIS

SERIES	MODEL NUMBER/ BODY CODE/ OPTION CODE	PASSENGER CAPACITY (STD./OPT.)	STANDARD ENGINE/ TRANS.	OPTIONAL ENGINE/ TRANS.	GVWR (LB)	GAWR (LB) FRONT/ REAR	BASE PAYLOAD (LB)	MAXIMUM TRAILER WT./ TONGUE LOAD LOAD (LB) PROPERLY EQUIPPED
<b>P30 MOTOR HOME CHASSIS (32 &amp; 12 MODELS) (CONT.)</b>								
<b>178.0-INCH WHEELBASE (CONT.)</b>	CP31832/ZW9 YTN tires	—	7400 V8/A4	6.5L V8/A4 Turbo Diesel	16500	5500/11000	*	—
<b>190.0-INCH WHEELBASE</b>	CP31932/ZW9 and YNP or YTN tires	—	7400 V8/A4	6.5L V8/A4 Turbo Diesel	14800	5500/10000	10031	—
	CP31932/ZW9 YTN tires	—	7400 V8/A4	6.5L V8/A4 Turbo Diesel	16500	5500/11000	*	—
<b>208.0-INCH WHEELBASE</b>	CP32032/ZW9/ and YNP or YTN tires	—	7400 V8/A4	6.5L V8/A4 Turbo Diesel	14800	5500/10000	9962	—
	CP32032/ZW9 YTN tires	—	7400 V8/A4	6.5L V8/A4 Turbo Diesel	16500	5500/11000	*	—
	CP32012/ZW9/ GL8/YTY tires	—	7400 V8/A4	—	21000	7500/13500		—
	CP32012/ZW9/ GL9/YRL tires	—	7400 V8/A4	—	22500	8000/14500		—
<b>228.0-INCH WHEELBASE</b>	CP32132/ZW9	—	7400 V8/A4	6.5L V8/A4 Turbo Diesel	16500	5500/11000	11548	—

\*Please refer to the Weights section of the Tech Guide to determine optional payloads.

Note: Motor Home Chassis models are for recreational vehicle use only and are not to be used for mounting any type of commercial body.

## POWERTRAINS

Chevrolet offers a variety of engines, transmissions and rear axle ratios for the P30 Chassis. The following charts detail basic engine, transmission and axle specifications. See your 1998 Chevrolet Truck Order Guide for details.

<b>ENGINES</b>						
	<b>VORTEC 4300 V6</b>	<b>VORTEC 5700 V8</b>	<b>VORTEC 7400 V8</b>	<b>VORTEC 7400 V8</b>	<b>6.5L V8 DIESEL</b>	<b>6.5L V8 TURBO DIESEL</b>
Order Code	L35	L31	L21	L29	L57	L65
Availability	42 Models	42 Models	12 Models	32 Models	42 Models	32 Models
SAE Net Horsepower @ rpm	195 @ 4200	235 @ 4000	N/A	290 @ 4000	160 @ 3400	190 @ 3400
SAE Net Torque lb-ft @ rpm	250 @ 3200	325 @ 2800	N/A	410 @ 3200	290 @ 1700	385 @ 1800
Fuel System	SFI	SFI	SFI	SFI	Indirect Fuel Injection	Indirect Fuel Injection
Clutch Size (in.)	11	12	—	—	12	12
Standard Battery Cold Cranking Amps at 0°F	600	600	600	600	2 @ 600 each	2 @ 600 each
Standard Alternator Max. Capacity (Amps)	105	105	124	124	105	124

N/A—Not available at time of publication.

# P30 F.C. CHASSIS AND MOTOR HOME CHASSIS

## POWERTRAINS (CONT.)

Chevrolet offers a variety of transmissions and rear axle ratios for the P30 Chassis. The following charts detail basic transmission and axle specifications. See your 1998 Chevrolet Truck Order Guide for details.

TRANSMISSIONS								
	MANUAL 5-SPEED W/OD NVG 4500		AUTOMATIC 4-SPEED W/OD 4L80-E				AUTOMATIC 4-SPEED AT542	
Order Code	MW3		MT1				MT9	
Availability	42 Models		42, 32 Models				CP32012 only	
Engine Application (Order Code)	5700 V8 (L31)	6.5L V8 Diesel (L57)	4300 V6 (L35)	5700 V8 (L31)	7400 V8 (L29)	6.5L V8 Diesel (L57)	6.5L V8 Turbo Diesel (L65)	7400 V8 (L21)
Gear Ratios								
First	5.61		2.48				3.45	
Second	3.04		1.48				2.25	
Third	1.67		1.00				1.41	
Fourth	1.00		0.75				1.00	
Fifth	0.75		—				—	
Sixth	—		—				—	
Reverse	5.04		2.08				5.02	

REAR AXLES (F.C. CHASSIS MODELS)				
Make	GM			Dana
Capacity (lb)/Code	7900 Full-Floating/GL1			11000 Full-Floating/GL4
Pinion and Ring Gear Type	Hypoid			Hypoid
Axle Ratio Code	066	005	058	058
Ratio	4.10	4.56	5.13	5.13
Pinion Teeth	10	9	8	8
Ring Gear Teeth	41	41	41	41
Ring Gear Diameter, (in.)	10.5	10.5	10.5	11.3

REAR AXLES (MOTOR HOME MODELS)						
Make	GM		GM <sup>1</sup>	Dana <sup>2*</sup>	Dana <sup>1, 3</sup>	
Capacity (lb)/Code	7900/GL1 Full-Floating		10,000/GL2 Full-Floating	10,000/11,000/GL2/GL4 Full-Floating	13,500/14,500/GL3/GL9 Full-Floating	
Pinion and Ring Gear Type	Hypoid		Hypoid	Hypoid	Hypoid	
Axle Ratio Code	066	005	005	006	004	058
Ratio	4.10	4.56	4.56	4.63	4.78	5.13
Pinion Teeth	10	9	9	8	N/A	8
Ring Gear Teeth	41	41	41	37	N/A	41
Ring Gear Diameter, (in.)	10.5	10.5	10.5	11.31	N/A	11.3

N/A—Not available at time of publication.

<sup>1</sup>14,800-lb GVW only.

<sup>2</sup>16,500-lb GVW models only.

<sup>3</sup>21,000-lb and 22,500-lb GVWs only.

\*Dana models have tubular section only.

# P30 F.C. CHASSIS AND MOTOR HOME CHASSIS

## TRIM LEVELS

The following chart details major standard features for P30 F.C. Chassis and Motor Home Chassis. See your 1998 Chevrolet Truck Order Guide for more details.

<b>STANDARD EQUIPMENT</b>		<b>F.C. CHASSIS (42 MODELS)</b>	<b>MOTOR HOME (32&amp;12 MODELS)</b>
<b>KEY: ■ = STANDARD, -- = NOT INCLUDED</b>			
<b>BRAKES</b>	Power hydraulic front disc, rear drum on F.C. Chassis models at 8600-lb, 9400-lb, 10,000-lb, and 11,000-lb GVW. Also on Motor Home Chassis Models at 12,300-lb GVW. Four-wheel ABS on 42, 32 and 12 models. Power hydraulic four-wheel disc on F.C. Chassis Models at 12,000-lb, 14,100-lb, and 14,500-lb GVW. Also on Motor Home Chassis Models at 14,800-lb, 16,500-lb, and P32012 models at 21,000-lb and 22,500-lb.	■ ■	■ ■
<b>BUMPER</b>	Front painted white. Front painted argent on 32 models only.	■ --	-- ■
<b>COOLER, TRANSMISSION OIL</b>	Included on F.C. Chassis.	■	--
<b>COOLER, ENGINE OIL</b>	Included on F.C. Chassis and Motor Home models.	■	■
<b>EXHAUST</b>	Single.	■	■
<b>FRAME</b>	Riveted ladder-type with channel design.	■	■
<b>FUEL TANK</b>	40-gallon (approx.) capacity on 42 and 32 models. 80-gallon (approx.) capacity 12 models.	■ --	■ ■
<b>GAGES</b>	Engine temperature, fuel level, odometer, oil pressure, speedometer, trip odometer, voltmeter, tachometer and additional tilt/taillights.	■	■
<b>HORN</b>	Dual low- and high-notes.	■	■
<b>PARKING BRAKE</b>	Dash mounted electrical switch. (Reqs. C7R GVWR)	--	■
<b>REAR AXLE</b>	Hypoid, full-floating. Ratios vary with model.	■	■
<b>SHOCK ABSORBERS</b>	Front and Rear: 32mm piston diameter on 42 models, 35mm on 32 models.	■	■
<b>SPEED CONTROL</b>	Electronic.	--	■
<b>STABILIZER BAR</b>	Front: 1.25-inch diameter, heavy-duty.	■	■
<b>STEERING</b>	Integral power.	■	■
<b>STEERING WHEEL</b>	2-spoke including Tilt-Wheel™ and anti-theft feature.	■	■
<b>SUSPENSION</b>	Front: Independent with coil springs on 42 and 32 models. Front: I-beam on 32012 models. Rear: 2-stage multileaf on 42 and 32 models. (P31842 model uses combination main/auxiliary two-stage multileaf springs.) Rear: Tapered leaf rear springs 32012 models.	■ -- ■ --	■ ■ ■ ■
<b>TIRES</b>	Four LT 225/75R16E BL on CP30542 and CP30842 at 9400-lb GVWR. Four LT 235/85R16E BL on CP30842 at 9400-lb GVWR. Six LT 215/85R16D BL on dual rear-wheel models. Six 7.50R16D BW on CP31432 models. Six 225/70R19.5F BW on 32 models CP31832, CP31932, CP32032 and CP32132. Six 245/70R19.5-G BL on CP32012 models at 21000-lb GVWR. Six 235/80R22.5-G BL on CP32012 models at 22500-lb GVWR.	■ ■ ■ -- -- -- --	-- -- -- ■ ■ ■ ■
<b>WHEELS</b>	Six gray painted 16" x 6.0" on dual rear-wheel 42 and 32 models (N/A with CP31832, CP31932, CP32032 and CP32132). Six gray painted 19.5" x 6.0" on dual rear wheel 32 and 12 models (N/A with CP31432).	■ --	■ ■

# P30 F.C. CHASSIS AND MOTOR HOME CHASSIS

## FORWARD CONTROL CHASSIS OPTIONS

See your 1998 Chevrolet Truck Order Guide and Vehicle Price Schedule for specific information and prices. The Option Code is listed in **bold type**.

Air Conditioning Provision ..... <b>ENV</b>	Massachusetts/New York/		
Alternative Fuel Modification Engine (requires L31 or L35 engine) ..... <b>KL5</b>	Connecticut ..... <b>NG1</b>		Suspension, Rear
Alternator, 124-amp ..... <b>KW2</b>	California ..... <b>YF5</b>		Low position (LO-PRO)
Axle, Front	Federal Emissions Override ..... <b>NC7</b>		P30842 and P30542 only (req. C6P) ..... <b>GN4</b>
I-beam axle (4400-lb capacity) ..... <b>FK4</b>	Cal./Mass./N.Y./CT		Transmissions
I-beam axle (5000-lb capacity) ..... <b>FK5</b>	Emissions Override ..... <b>NB8</b>		5-speed manual w/overdrive ..... <b>MW3</b>
Axle, Rear	Fender Deletion ..... <b>FNT</b>		4-speed automatic w/overdrive ..... <b>MT1</b>
(Must specify one of the following.)	GVWR Ratings		Wheel Color, Silver ..... <b>17P</b>
4.10 Ratio ..... <b>066</b>	8600 lb ..... <b>C6P</b>		Wheel Color, White ..... <b>40P</b>
4.56 Ratio ..... <b>005</b>	9400 lb ..... <b>C6E</b>		Wheel Color, Black (included w/B3M School Bus special equipment) ..... <b>41P</b>
5.13 Ratio ..... <b>058</b>	10,000 lb ..... <b>C7A</b>		Wheel Color, Gray (req. R05) (included with CP31842) ..... <b>84P</b>
Battery, Heavy-Duty ..... <b>UA1</b>	11,000 lb ..... <b>C7E</b>		Dual Rear (std on CP31842) ..... <b>R05</b>
Bumper, Front	12,000 lb ..... <b>C7L</b>		Single Rear (N/A CP31842) ..... <b>R04</b>
Black ..... <b>VH6</b>	14,100 lb ..... <b>C7M</b>		Wheel, Spare 19.5" x 6.0" (included w/spare tire) ..... <b>Q34</b>
Extra wide, white ..... <b>VKL</b>	14,500 lb (School Bus Only) ..... <b>C7S</b>		
Engines	School Bus Chassis equipment (N/A CP31842)		
VORTEC 4300 SFI V6 ..... <b>L35</b>	(14,500-lb GVWR only) ..... <b>B3D</b>		
VORTEC 5700 SFI V8 ..... <b>L31</b>	School Bus Chassis special equipment (requires B3D School Bus Chassis)		
6.5L Diesel, naturally- aspirated EFI V8 ..... <b>L57</b>	(includes black bumpers and black wheel color) ..... <b>B3M</b>		
Emissions	Suspension, Front		
Federal ..... <b>FE9</b>	Low position (LO-PRO)		
High altitude ..... <b>NA6</b>	P30842 and P30542 only (req. C6P) ..... <b>FL5</b>		

## FORWARD CONTROL CHASSIS TIRES

KEY: ALS = ALL-SEASON SBR = STEEL-BELTED RADIAL PLY BW = BLACKWALL HWY = HIGHWAY BL = BLACK LETTERED OOR = ON-OFF ROAD

TIRE DESCRIPTION		FRONT	REAR	SPARE
LT215/85R16D	HWY/SBR/BL	XYK	YYK	ZYK
LT215/85R16D	OOR/SBR/BL	—	YYL	ZYL
LT225/75R16E	ALS/SBR/BL	XHF	YHF	ZHF
LT235/85R16E	HWY/SBR/BL	XYN	YYN	ZYN
8R-19.5E	HWY/SBR/BW	XTV	YTV	ZTV
7.50-16D	HWY/BW	XWG	YWG	ZWG

## MOTOR HOME CHASSIS OPTIONS

See your 1998 Chevrolet Truck Order Guide and Vehicle Price Schedule for specific information and prices. The Option Code is listed in **bold type**.

Air Conditioning Delete Provision ..... <b>EN2</b>	California ..... <b>YF5</b>	Headlamps, Dual Rectangular ..... <b>HPR</b>
Axle Ratio, Rear	Federal Emissions Override ..... <b>NC7</b>	Suspension, Front
4.10 Ratio ..... <b>066</b>	Cal./Mass./N.Y./CT	5000 lb ..... <b>FL7</b>
4.78 Ratio (12 models) ..... <b>004</b>	Emissions Override ..... <b>NB8</b>	5500 lb ..... <b>FL9</b>
4.63 Ratio ..... <b>006</b>	Engines	I-Beam 8000 lb (12 models) ..... <b>FK8</b>
4.56 Ratio ..... <b>005</b>	VORTEC 7400 SFI V8 (12 models) ..... <b>L21</b>	I-Beam 7500 lb (12 models) ..... <b>F10</b>
5.13 Ratio (12 models) ..... <b>058</b>	VORTEC 7400 SFI V8 ..... <b>L29</b>	Suspension, Rear
Axle, Wide Track ..... <b>GTY</b>	6.5L V8 Turbo Diesel ..... <b>L65</b>	7,500 lb Capacity ..... <b>GN6</b>
Axle, Front	Fuel Tanks	11,000 lb Capacity ..... <b>GP4</b>
5,000 lb ..... <b>FN6</b>	Approximate 60-gallon capacity	13,500 lb Capacity (12 models) ..... <b>GQ5</b>
5,500 lb ..... <b>FN8</b>	(N/A 32012) ..... <b>NN4</b>	14,500 lb Capacity (12 models) ..... <b>GQ7</b>
8,100 lb (12 models) ..... <b>FL1</b>	Approximate 80-gallon capacity	Transmissions
Axle, Rear	(P31832, P31932, P32032, 32132 only) ..... <b>NJ9</b>	4-Speed Automatic w/Overdrive,
7,900 lb ..... <b>GL1</b>	GVWR	Electronic Control ..... <b>MT1</b>
10,000 lb ..... <b>GL2</b>	12300 lb ..... <b>C7N</b>	Auto Allison AT542 (P32012 only) ..... <b>MT9</b>
11,000 lb ..... <b>GL4</b>	14800 lb ..... <b>C3D</b>	
13,500 lb ..... <b>GL8</b>	16500 lb ..... <b>C7R</b>	
15,000 lb ..... <b>GL9</b>	21000 lb (12 models) ..... <b>C7V</b>	
Emissions	22500 lb (12 models) ..... <b>C7T</b>	
Federal ..... <b>FE9</b>	Harness Assembly, Tail and Stop	
Massachusetts/New York/	Lamps ..... <b>RHQ</b>	
Connecticut ..... <b>NG1</b>		

# P30 F.C. CHASSIS AND MOTOR HOME CHASSIS

## MOTOR HOME CHASSIS TIRES

KEY: SBR = STEEL-BELTED RADIAL PLY BW = BLACKWALL HWY = HIGHWAY BL = BLACK LETTERED				
TIRE DESCRIPTION		FRONT	REAR	SPARE
225/70R19.5F	HWY/SBR/BW	XTN	YTN	ZTN
7.50R16/D	HWY/SBR/BW	XWG	YWG	ZWG
245/70R19.5-G	HWY/SBR/BL	XTY	YTY	ZTY
235/80R22.5-G	HWY/SBR/BL	XRL	YRL	ZRL

## DIMENSIONS

MODEL	FORWARD CONTROL COMMERCIAL CHASSIS				
MODEL NUMBER	CP30542/ZW9	CP30842/ZW9	CP31042/ZW9	CP31442/ZW9	CP31842/ZW9
<b>EXTERIOR DIMENSIONS FORWARD CONTROL CHASSIS (42 MODELS)</b>					
<b>BODY</b>					
Wheelbase (in.) L101	110.0	125.0	133.0	157.0	178.0
Overall Length (in.) w/o Rear Bumper L103	200.7	214.8	238.8	262.8	304.8
Maximum Width (in.) W103	74.9	74.9	74.9	85.4	85.4
Track Width (in.) Front/Rear	66.4/65.5	66.4/65.5	66.4/65.5	66.4/66.7	65.3/66.7
Bumper to Axle (in.)					
Front L104	36.9	36.0	36.0	36.0	36.0
Rear Axle to End of Frame (in.) L105	53.8	53.8	69.8	69.8	90.8
Ground to Top of Frame (in.) HFR					
	29.2	29.2	29.5	29.1	31.4
Ground Clearance (in.)					
Front/Rear H148/H153	9.7 6.9	12.2 7.8	12.2 7.8	12.2 7.8	11.7 7.3
Frame Width (in.) WF	34	34	34	34	34

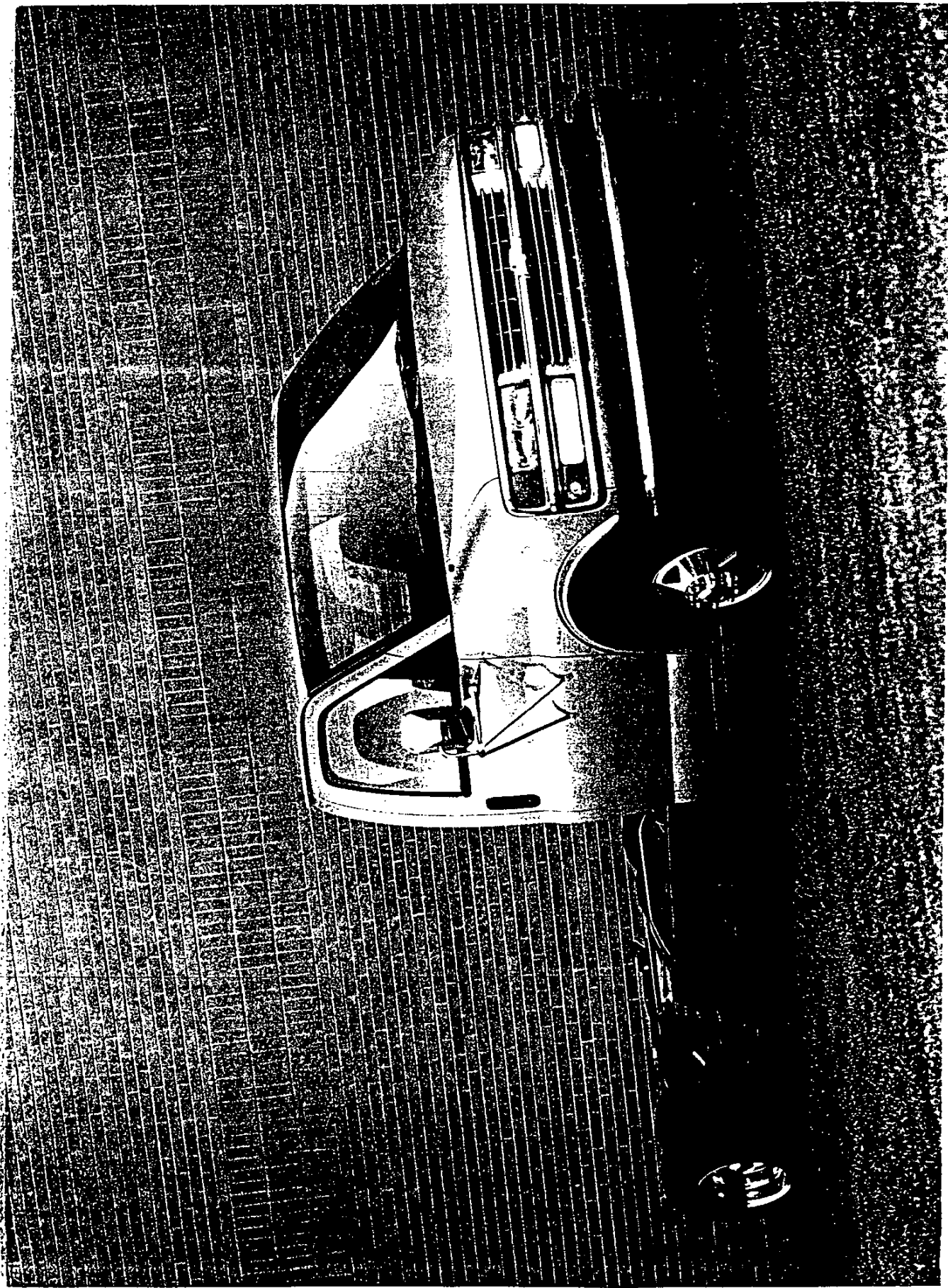
MODEL	P30 MOTOR HOME CHASSIS				
MODEL NUMBER	CP31432/ZW9	CP31832/ZW9	CP31932/ZW9	CP32032/ZW9	CP32132/ZW9
<b>EXTERIOR DIMENSIONS P30 MOTOR HOME CHASSIS (32 MODELS)</b>					
<b>BODY</b>					
Wheelbase (in.) L101	158.5	178.0	190.0	208.0	228.0
Overall Length (in.) L103	259.3	317.4	329.4	347.4	367.4
Maximum Width (in.) W103	85.4	85.4	85.4	85.4	85.4
Track Width (in.) Front/Rear	69.7/66.7	69.7/66.7	69.7/66.7	69.7/66.7	69.7/66.7
Bumper to Axle (in.)					
Front L104	33.4	33.4	33.4	33.4	33.4
Rear Axle to End of Frame (in.) L105	67.3	106.0	106.0	106.0	106.0
Ground to Top of Frame (in.) HFR					
	29.5	N/A	N/A	N/A	N/A
Frame Width (in.) WF	34	34	34	34	34.0

N/A—Not available at time of publication.

MODEL	P30 MOTOR HOME CHASSIS	
MODEL NUMBER	CP32012/ZW9	
<b>EXTERIOR DIMENSIONS P30 MOTOR HOME CHASSIS (12 MODELS)</b>		
<b>BODY</b>		
Wheelbase (in.) L101	208.0	
Overall Length (in.) L103	N/A	
Maximum Width (in.) W103	N/A	
Track Width (in.) Front/Rear	N/A	
Bumper to Axle (in.)		
Front L104	N/A	
Rear Axle to End of Frame (in.) L105	N/A	
Ground to Top of Frame (in.) HFR		
	N/A	
Frame Width (in.) WF	N/A	

N/A—Not available at time of publication.





CHEVROLET

G-CUTAWAY

## RV CUTAWAY VAN EQUIPMENT SUMMARY

### STANDARD CHASSIS FEATURES

ALTERNATOR: 124 AMPS  
BATTERY: HEAVY-DUTY 600 CCA  
BRAKES: POWER ASSISTED FRONT DISC, REAR DRUM, 4-WHEEL ANTI-LOCK  
BRAKES/TRANS: BRAKE/TRANSMISSION SHIFT INTERLOCK  
FLANGE: BODY MOUNTING  
FUEL TANK: 35 GALLON CAPACITY  
SPRINGS: FRONT, COIL  
REAR, LEAF  
STEERING: SPEED SENSITIVE (E.V.O.) POWER  
TRANSMISSION: 4-SPEED ELECTRONICALLY CONTROLLED AUTOMATIC w/OVERDRIVE, HEAVY-DUTY

### STANDARD INTERIOR FEATURES

AIR CONDITIONING: FRONT  
CUPHOLDERS: DUAL, IN INSTRUMENT PANEL CONSOLE  
CONVENIENCE GROUP: SPEED CONTROL AND TILT STEERING  
DEFOGGERS: SIDE WINDOW  
DOOR BEAMS: SIDE-GUARD, FRONT  
FLOOR COVERING: EMBOSSED BLACK VINYL FULL-WIDTH MAT OVER FRONT FLOOR AREA  
AND FRONT WHEELHOUSINGS  
GAGES: ENGINE TEMPERATURE, OIL PRESSURE, TRIP ODOMETER,  
AND VOLTMETER  
GLASS: SOLAR-RAY, TINTED  
HEADLINER: CLOTH OVER DRIVER AND PASSENGER SEATS  
LIGHTING: DOME LAMPS WITH DEFEAT SWITCH AND DOOR-ACTUATED  
SWITCHES  
UNDERHOOD LAMP  
POWER POINT: COVERED POWER OUTLET (1)  
RADIO: AM/FM STEREO RADIO WITH SEEK-SCAN, CASSETTE TAPE AND CLOCK  
SEATING: ADJUSTABLE RECLINING HIGH-BACK DRIVER AND PASSENGER  
BUCKET SEAT WITH VINYL TRIM  
SECURITY: PASSLOCK, THEFT DETERRENT SYSTEM  
SUNSHADES: RH AND LH CLOTH SUNSHADE, COLOR-KEYED  
WARNING TONE: HEADLAMP ON WARNING

## RV CUTAWAY VAN EQUIPMENT SUMMARY

### STANDARD EXTERIOR FEATURES

BUMPER:	FRONT, CHROME w/STEP-PAD
GRILLE:	CHROME
HEADLAMPS:	DUAL COMPOSITE
LIGHTS:	DAYTIME RUNNING
WHEELS :	16.0" X 6.0" ARGENT STEEL WHEELS
WHEEL TRIM:	CG31532 w/R04 BLACK CENTER CAPS
WIPERS:	INTERMITTENT, WINDSHIELD

**MODEL AND BODY**

Description	MODEL NO.	Wheelbase
<b>2-WHEEL DRIVE MODELS</b>		
RV Cutaway Van	CG31532	139"
RV Cutaway Van	CG31832	159"
RV Cutaway Van	CG31932	177"

**GVWR, POWER TEAMS AND TIRE CHART (MUST SPECIFY)**

<b>CG31532</b>	*GAWR: Front/Rear (lbs)		4100/6084 w/E23 4300/8250 w/C7G 4300/8600 w/C7N			
<b>GVWR</b>	(N/A w/R05) E23 (9500#)	(Reqs R05) C7G (11500#) C7N (12300#)	(N/A w/R05) E23 (9500#)	(Reqs R05) C7G (11500#) C7N (12300#)	(N/A w/R05) E23 (9500#)	(Reqs R05) C7G (11500#) C7N (12300#)
<b>ENGINE</b>	L31	L31	L65	L65	L29	L29
<b>TIRES</b>	XHH	XHP	XHH	XHP	XHH	XHP
<b>TRANSMISSION</b>	MT1	MT1	MT1	MT1	MT1	MT1
<b>AXLE RATIO</b>	GT5 (4.10)	GT5 (4.10) HC4 (4.56)	GT5 (4.10)	GT5 (4.10)	GT4 (3.73) (a) GT5 (4.10)	GT4 (3.73) (a) GT5 (4.10)
<b>CG31832</b>	*GAWR: Front/Rear (lbs)		4300/8250 w/C7G 4300/8600 w/C7N			
<b>GVWR</b>	C7G (11500#) C7N (12300#)	C7G (11500#) C7N (12300#)	C7G (11500#) C7N (12300#)			
<b>ENGINE</b>	L31	L65	L29			
<b>TIRES</b>	XHP	XHP	XHP			
<b>TRANSMISSION</b>	MT1	MT1	MT1			
<b>AXLE RATIO</b>	GT5 (4.10) HC4 (4.56)	GT5 (4.10)	GT4 (3.73) (a) GT5 (4.10)			
<b>CG31932</b>	*GAWR: Front/Rear (lbs)		4300/8600 w/C7N			
<b>GVWR</b>	C7N (12300#)	C7N (12300#)	C7N (12300#)			
<b>ENGINE</b>	L31	L65	L29			
<b>TIRES</b>	XHP	XHP	XHP			
<b>TRANSMISSION</b>	MT1	MT1	MT1			
<b>AXLE RATIO</b>	GT5 (4.10) HC4 (4.56)	GT5 (4.10)	GT4 (3.73) (a) GT5 (4.10)			

(a) N/A G80 Locking Differential

\* GAWR'S shown are the minimum for each Axle with equipment listed. Other GAWR'S are available and they are determined as the minimum capacity of either axle, springs or tires.

THE LOWEST NUMERICAL AXLE RATIO HAS BEEN ENGINEERED TO COVER THE WIDEST RANGE OF APPLICATIONS AND OFFER THE BEST FUEL ECONOMY.

# RV CUTAWAY VAN

## CAPACITIES

---

### SPRINGS:

#### CG31532

w/E23  
Front: 4100  
Rear: 6084

w/C7G  
Front: 4300  
Rear: 8250

w/C7N  
Front: 4300  
Rear: 8600

#### CG31832

w/C7G  
Front: 4300  
Rear: 8250

w/C7N  
Front: 4300  
Rear: 8600

#### CG31932

w/C7N  
Front: 4300  
Rear: 8600

### AXLES:

w/E23  
Front: 4300  
Rear: 6084

w/C7G  
Front: 4300  
Rear: 8250

w/C7N  
Front: 4300  
Rear: 8800

w/C7G  
Front: 4300  
Rear: 8250

w/C7N  
Front: 4300  
Rear: 8800

w/C7N  
Front: 4300  
Rear: 8800

No Deletions Allowed. Additional Options/Upgrades (Where Indicated)  
 May be Ordered from the Additional Option Listing:

	<b>BASE</b>
	1SA
Preferred Equipment Group	
Standard Body	ZW9 x

**ADDITIONAL OPTIONS**

**OPTION**

**ACKNOWLEDGEMENTS:**

- R8S Multiple Order Numbers
- R8T Preliminary Invoice
- K50 **AUXILIARY FUEL TAP:** (w/CG31532 Reqs C7G or C7N) (N/A L65)
- AXLES, REAR: (MUST SPECIFY)** (Refer GVWR, Power Teams and Tire Chart for Availability)
- GT4 3.73 Ratio
- GT5 4.10 Ratio
- HC4 4.56 Ratio
- G80 Locking Differential
- ZW9 **BODY CODE:** Standard
- V10 **COLD CLIMATE PACKAGE:** (Incls Engine Block Heater) (N/A L65)
- ZQ2 **CONVENIENCE GROUP:** Power Door Locks and Power Windows
- EMISSIONS: (MUST SPECIFY)** (Refer Emission Requirements Tab Section)
- FE9 Federal Emission Requirements
- NG1 New York, Massachusetts or Connecticut Emission Requirements
- YF5 California Emission Requirements
- NB8 CA, NY, MA, CT Emission Override (Reqs FE9 Federal Emissions)
- NC7 Federal Emission Override (Reqs YF5 or NG1)
- ENGINES: (MUST SPECIFY)** (Refer GVWR, Power Teams and Tire Chart for Availability)
- L31 Vortec 5700 V8 SFI
- L29 Vortec 7400 V8 SFI
- L65 6.5 Liter Turbo Diesel V8
- GVWR: (MUST SPECIFY)** (All GVWR Options Contain Brake Suspension and Chassis Enhancements to Achieve GVWR Rating) (Refer GVWR, Power Teams and Tire Chart for Requirements)
- E23 9500# (CG31532)
- C7G 11500# (w/CG31532 Reqs R05) (N/A CG31932)
- C7N 12300# (w/CG31532 Reqs R05)

# RV CUTAWAY VAN

## ADDITIONAL OPTIONS

### OPTION

- VK3 LICENSE PLATE BRACKET: Front
- DH6 MIRROR, VISOR: LH and RH Illuminated
- ZY1 PAINT, EXTERIOR: Solid (Refer Color/Trim Chart for Availability)
- RADIO EQUIPMENT: (Electronically Tuned AM/FM Stereo w/Cassette Tape and Digital Clock Standard)
- UL0 Electronically Tuned AM/FM Stereo w/Seek-Scan, Digital Clock, Automatic Tone Control, Cassette Tape, Theft Lock and Speed Compensated Volume (Reqs ZQ2)
- UN0 Electronically Tuned AM/FM Stereo w/Seek-Scan, Digital Clock, Automatic Tone Control, Compact Disc Player, Theft Lock and Speed Compensated Volume (Reqs ZQ2)
- UL5 Radio Delete (Deletes Antenna and Speakers)
- U75 Antenna, Power (Incl w/UL0 and UN0) (N/A UL5)
- SEAT: (MUST SPECIFY) (Refer Color/Trim Chart for Availability)
- AR7 Front Bucket (Reqs \*\*W Trim)
- AS5 Front Bucket Deluxe (Reqs \*\*G Trim)
- SEATING ARRANGEMENT: (MUST SPECIFY)
- ZX1 High-back, Driver only (Passenger Seat Cannot Be Added Later)
- ZX2 High-Back, Driver and Passenger
- SEAT, POWER: 6-Way
- AG1 Driver (Reqs AS5)
- AG2 Passenger (Reqs AG1, AS5 and ZX2)
- NE7 TANK, FUEL: 55 Gallon (Rear Mounted) (N/A CG31532)
- TIRES: (MUST SPECIFY) Tubeless Steel Belted Radial All Season (Refer GVWR, Power Teams and Tire Chart for Availability) (B/W=Blackwall)
- XHP LT225/75R16-D B/W (w/CG31532 Reqs R05)
- XHH LT245/75R16-E B/W (CG31532) (N/A R05)
- WHEELS, REAR:
- R04 Single Rear (CG31532) (Reqs E23) (N/A R05)
- R05 Dual Rear (Std on CG31832 and CG31932) (N/A E23)

**RV CUTAWAY**  
**INTERIOR AND EXTERIOR COLOR AVAILABILITY CHART**  
**WITH ZY1 PAINT**

PLEASE NOTE: Below are the Interior Trim Color and Exterior Paint Combinations Recommended by Chevrolet.  
 The only available Color and Trim Combinations are those shown in the Chart below.

TRIM LEVEL SEAT TYPE	(a) Seat Option	INTERIOR COLORS		
		Navy	Neutral	Medium Gray
Vinyl Bucket Seats	AR7	26W	52W	92W
Custom Cloth Bucket Seats	ASS	26G	52G	92G

EXTERIOR COLORS	Color Code 1	Paint Scheme	RECOMMENDED INTERIOR TRIM COLORS		
AUTUMNWOOD, LIGHT (Met)	55U	ZY1		x	
BLUE-GREEN, MEDIUM (Met)	35U	ZY1		x	x
BROWN, DARK (Met)	58U	ZY1		x	x
COPPER, DARK (Met)	69U	ZY1		x	x
GRAY, MEDIUM STORM (Met)	14U	ZY1	x		x
RED, DARK CARMINE (Met)	51U	ZY1		x	x
RED, MEDIUM MADRID (Met)	71U	ZY1		x	x
SILVERMIST (Met)	17U	ZY1	x		x
WHITE, SUMMIT	50U	ZY1	x	x	x

(a) MUST SPECIFY SEAT OPTION



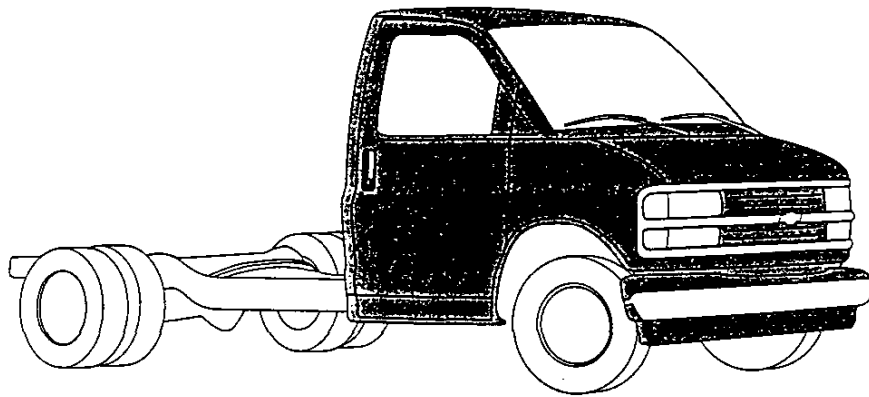
# COMMERCIAL CUTAWAY AND RECREATIONAL VEHICLE CUTAWAY INTRODUCTION

## COMMERCIAL CUTAWAY AND RECREATIONAL VEHICLE CUTAWAY

The 1998 Chevrolet Commercial Cutaway and Recreational Vehicle Cutaway are offered in the G3500 Series.

Changes on the 1998 Commercial Cutaway and Recreational Vehicle Cutaway include:

- 4L80-E Automatic Transmission Enhancements (MT1)
- Four New Exterior Colors
- New PassLock™ Theft Deterrent System



# COMMERCIAL CUTAWAY AND RECREATIONAL VEHICLE CUTAWAY

## MODEL SELECTION SUMMARY

Use the chart below to choose the model that fits your customer's needs. Please note that the Base Payloads shown reflect the maximum allowable weight of cargo that can be carried in a standard model, including occupants. (They are calculated by subtracting curb weight from the GVWR.) To calculate payloads for models with optional equipment, please refer to the WEIGHTS section in the back of this book or consult your 1998 GM PROSPEC.

SERIES	MODEL NUMBER/ BODY CODE/ OPTION CODE	PASSENGER CAPACITY (STD./OPT.)	STANDARD ENGINE/ TRANS.	OPTIONAL ENGINE/ TRANS.	GVWR (LB)	GAWR (LB) FRONT/ REAR	BASE PAYLOAD (LB)	MAXIMUM- TRAILER WT./ TONGUE LOAD (LB) PROPERLY EQUIPPED
<b>COMMERCIAL CUTAWAY</b>								
SINGLE REAR WHEELS	CG31503/ZW9/ R04	2/1	5700 V8/A4	7400 V8/A4 6.5L V8/A4	9500	4100/6084	5095	—
DUAL REAR WHEELS	CG31503/ZW9/ R05	2/1	5700 V8/A4	7400 V8/A4 6.5L V8/A4	10000	4100/7500	*	—
DUAL REAR WHEELS	CG31503/ZW9/ R05	2/1	5700 V8/A4	7400 V8/A4 6.5L V8/A4	11000	4100/8250	*	—
DUAL REAR WHEELS	CG31503/ZW9/ R05	2/1	5700 V8/A4	7400 V8/A4 6.5L V8/A4	12000	4300/8600	*	—
DUAL REAR WHEELS	CG31803/ZW9/ R05	2/1	5700 V8/A4	7400 V8/A4 6.5L V8/A4	10000	4100/7500	5363	—
DUAL REAR WHEELS	CG31803/ZW9/ R05	2/1	5700 V8/A4	7400 V8/A4 6.5L V8/A4	11000	4100/8250	*	—
DUAL REAR WHEELS	CG31803/ZW9/ R05	2/1	5700 V8/A4	7400 V8/A4 6.5L V8/A4	12000	4300/8600	*	—
DUAL REAR WHEELS	CG31903/ZW9/ R05	2/1	5700 V8/A4	7400 V8/A4 6.5L V8/A4	12000	4300/8600	7296	—
<b>RECREATIONAL VEHICLE CUTAWAY</b>								
SINGLE REAR WHEELS	CG31532/ZW9/ R04	2/1	5700 V8/A4	7400 V8/A4 6.5L V8/A4	9500	4100/6084	5029	—
DUAL REAR WHEELS	CG31532/ZW9/ R05	2/1	5700 V8/A4	7400 V8/A4 6.5L V8/A4	11500	4300/8250	*	—
DUAL REAR WHEELS	CG31532/ZW9/ R05	2/1	5700 V8/A4	7400 V8/A4 6.5L V8/A4	12300	4300/8600	*	—
DUAL REAR WHEELS	CG31832/ZW9/ R05	2/1	5700 V8/A4	7400 V8/A4 6.5L V8/A4	11500	4300/8250	6810	—
DUAL REAR WHEELS	CG31832/ZW9/ R05	2/1	5700 V8/A4	7400 V8/A4 6.5L V8/A4	12300	4300/8600	*	—
DUAL REAR WHEELS	CG31932/ZW9/ R05	2/1	5700 V8/A4	7400 V8/A4 6.5L V8/A4	12300	4300/8600	7552	—

\* Please refer to the Weights section at the back of the Tech Guide to determine optional payloads.

# COMMERCIAL CUTAWAY AND RECREATIONAL VEHICLE CUTAWAY

## POWERTRAINS

Chevrolet offers a variety of engines and rear axle ratios for the Commercial Cutaway and Recreational Vehicle Cutaway. The following charts detail basic engine, transmission, and axle specifications. See your 1998 Chevrolet Truck Order Guide for details.

ENGINES				
	VORTEC 5700 V8 HD	VORTEC 5700 V8 HD	VORTEC 7400 V8 HD	6.5L V8 TURBO DIESEL HD
Availability	8600 lb to 10,000 lb GVWR	10,001 lb GVWR and above	All Models	All Models
Order Code	L31	L31	L29	L65
SAE Net Horsepower @ rpm	250 @ 4600	245 @ 4200	290 @ 4000	190 @ 3400
SAE Net Torque lb-ft @ rpm	330 @ 2800	330 @ 2800	410 @ 3200	385 @ 1800
Fuel System	SFI	SFI	SFI	Indirect Fuel Injection
Standard Battery Cold Cranking Amps @ 0°F	600	600	600	2 @ 600 each
Standard Alternator Maximum Capacity (Amps)	124	124	124	124

TRANSMISSION	
ELECTRONICALLY CONTROLLED AUTOMATIC 4-SPEED W/OVERDRIVE HD (4L80-E)	
Order Code	MT1
Engine Application	All Above
Gear Ratios	
First	2.48
Second	1.48
Third	1.00
Fourth	0.75
Reverse	2.08

REAR AXLES					
Capacity (lb)	6084		7500, 8250, 8800		
Make	American Axle		American Axle		
Pinion and Ring Gear Type	Hypoid		Hypoid		
Engine Availability	L31 L65	L31 L29 L65	L29	L31 L29 L65	L31 L29 L65
Axle Ratio Code	GT4	GT5	GT4	GT5	HC4
Ratio	3.73	4.10	3.73	4.10	4.56
Pinion Teeth	11	10	11	10	9
Ring Gear Teeth	41	41	41	41	41
Ring Gear Diameter (in.)	10.5	10.5	10.5	10.5	10.5

Note: Axle Ratio depends on model, powertrain, and emissions selected.

## TRIM LEVELS

The following chart details major standard features for Commercial Cutaway and RV Cutaway. See your 1998 Chevrolet Truck Order Guide for more details.

CHASSIS EQUIPMENT			
KEY: ■ = STANDARD, — = NOT INCLUDED		COMMERCIAL CUTAWAY	RV CUTAWAY
BRAKES	Power-assisted, heavy-duty, front disc, rear drum;	■	■
EXHAUST	Single.	■	■
FRAME	All-welded frame construction.	■	■
FUEL TANK	35.0 gallon (approx.) capacity.	■	■
REAR AXLE	Hypoid full-floating.	■	■
SHOCK ABSORBERS	Front: 35mm. Rear: 35mm.	■	■
STABILIZER BAR	Front 1.06-inch diameter.	■	■
STEERING	Speed-Sensitive (EVO).	■	■
SUSPENSION	Independent w/coil springs (front). Parabolic tapered leaf spring rear (03 models). Multileaf rear (32 models).	■ ■	■ ■

# COMMERCIAL CUTAWAY AND RECREATIONAL VEHICLE CUTAWAY

EXTERIOR EQUIPMENT			
KEY: ■ = STANDARD, — = NOT INCLUDED		COMMERCIAL CUTAWAY	RV CUTAWAY
<b>BUMPERS</b>	Front bumper painted argent. Includes bumper guards. Front bumper chrome.	■ —	— ■
<b>GRILLE</b>	Molded plastic grille and front lamp bezels painted light argent. Molded plastic grille painted light argent with chrome trim.	■ —	— ■
<b>HEADLAMPS</b>	Single rectangular halogen headlamps. Dual halogen composite headlamps.	■ —	— ■
<b>HORN</b>	Single low-note electric horn. Dual low-note and high-note electric horn.	■ —	— ■
<b>HUBCAPS</b>	Black metal hubcaps.	■	■
<b>TIRES</b>	Four LT225/75R16E tires on single rear-wheel models or six LT225/75R16D tires on dual rear-wheel models. Six LT225/75R16C/D steel-belted radial tires.	■ —	— ■
<b>UNDERCOATING</b>	On step panels and front wheelhousings.	■	■
<b>WHEELS</b>	Four argent steel wheels (16" x 6.5" on single rear-wheel models or six argent 16" x 6.0" on dual rear-wheel models). Six argent 16" x 6.0" steel wheels.	■ —	— ■
<b>WINDOWS</b>	Tinted Solar-Ray® glass on all windows.	■	■

INTERIOR EQUIPMENT			
<b>AIR CONDITIONING</b>	Front.	—	■
<b>ARMREST</b>	LH and RH padded vinyl armrest in door trim panel.	■	■
<b>CIGARETTE LIGHTER</b>	Included on instrument panel. Also includes ashtray light.	■	■
<b>DRIVER'S CONVENIENCE GROUP</b>	Speed control and tilt steering.	—	■
<b>FLOOR COVERING</b>	Embossed black vinyl full width over floor area and wheelhousings.	■	■
<b>GAGES</b>	Speedometer, odometer, trip odometer, fuel level, voltmeter, oil pressure, engine temperature, and additional telltale lights.	■	■
<b>HEADLAMP WARNING BUZZER</b>	Headlamps on.	■	■
<b>HEADLINER</b>	Cloth over driver and passenger seats.	■	■
<b>HEATER</b>	Deluxe outside air heater with windshield and side window defoggers.	■	■
<b>INSULATION</b>	In cab area.	■	■
<b>LIGHTING</b>	Dome lamp with defeat switch and front door-activated switches. Retractable underhood lamp.	■ ■	■ ■
<b>MIRROR</b>	10-inch rearview.	■	■
<b>PARCEL TRAY</b>	On top surface of instrument panel extension; includes beverage holder provisions.	■	■
<b>RADIO</b>	Electronically tuned AM/FM stereo radio with Seek-Scan, digital clock and fixed-mast antenna. Electronically tuned AM/FM stereo radio with Seek-Scan, digital clock, auto reverse cassette and fixed mast antenna.	■ —	— ■
<b>SEATS</b>	Adjustable high-back front bucket driver's seat with custom vinyl trim. Includes matching passenger seat.	■ ■	■ —
<b>SECURITY</b>	PassLock™ theft deterrent system.	■	■
<b>SUNSHADES</b>	Padded, color-keyed vinyl RH and LH sunshades.	■	■
<b>WINDSHIELD WIPERS</b>	Intermittent.	■	■

<b>BRAKES</b>	4-wheel anti-lock brakes (Includes brake/transmission shift interlock).	■	■
<b>LAMPS</b>	Daytime running lamps.	■	■
<b>DOOR BEAMS</b>	Side door guard beams in side doors.	■	■
<b>SEAT BELTS</b>	Outboard seating lap and shoulder belts.	■	■
<b>STEERING COLUMN</b>	Energy absorbing steering column (also includes anti-theft locking).	■	■

# COMMERCIAL CUTAWAY AND RECREATIONAL VEHICLE CUTAWAY

## OPTIONS

See your 1998 Chevrolet Truck Order Guide for specific availability and restrictions. The Option Code is listed in **bold type**.

*Air Conditioning, Front (03 models only)* ..... **C60**  
*Ambulance Package, requires L65 engine* ..... **YF2**  
*Appearance, Deluxe Front (includes chrome grille and chrome front bumper) (03 models w/YF2 only)* ..... **ZR7**  
*Auxiliary Fuel Tap, requires L31 or L29 engines (32 models only)* ..... **K50**  
*Axle, Rear*  
 3.73 ..... **GT4**  
 4.10 ..... **GT5**  
 4.56 ..... **HC4**  
*Locking Differential* ..... **G80**  
*Cold Climate Package (Req L29 or L31 with K05) Includes Engine Block Heater* ..... **V10**  
*Convenience Group*  
*Power Door Locks and Power Windows* ..... **ZQ2**  
*Electronic Speed Control and Tilt Wheel™ (03 models)* ..... **ZQ3**  
*Emissions*  
*Federal* ..... **FE9**  
*California* ..... **YF5**  
*Massachusetts/New York/Connecticut* ..... **NG1**  
*Federal/High Altitude Emissions Override* ..... **NC7**

*Cal./Mass./N.Y./CT Emissions Override* ..... **NB8**  
*Engines (see order guide)*  
*VORTEC 5700 SFI V8* ..... **L31**  
*VORTEC 7400 SFI V8* ..... **L29**  
*6.5 Liter Turbo Diesel V8* ..... **L85**  
*GVWR 03 Models*  
 9500 lb ..... **E23**  
 10000 lb ..... **C7A**  
 11000 lb ..... **C7E**  
 12000 lb ..... **C7L**  
*GVWR 32 models*  
 9500 lb ..... **E23**  
 11500 lb ..... **C7G**  
 12300 lb ..... **C7N**  
*License plate bracket* ..... **VK3**  
*Mirror, visor (LH and RH illuminated 32 Models only)* ..... **DH6**  
*Mirrors (03 Models only)*  
*Camper-Type, Stainless Steel* ..... **DF2**  
*Oversized LH and RH Direct Control, Folding* ..... **DE2**  
*Mirrors, Inside, Rearview Tilt (03 Models only)* ..... **D31**  
*Paint, Exterior*  
*Solid* ..... **ZY1**  
*Radio Equipment:*  
*ETR AM/FM Stereo Radio w/ Seek-Scan, Digital Clock w/Auto Tone Control, Cassette Tape,*

*Theft Lock™ and Speed Compensated Volume* ..... **ULO**  
*ETR AM/FM Stereo Radio w/Auto Tone Control, Compact Disc Player, Digital Clock, Theft Lock™ and Speed Compensated Volume (32 Models only)* ..... **UNO**  
*Antenna, Power* ..... **U75**  
*Radio Delete* ..... **UL5**  
*School Bus Chassis Equipment (Includes Brake Light Warning Indicator)(w/G31803 Req C7A GVWR)* ..... **B3D**  
*Seats*  
*Vinyl Front bucket* ..... **AR7**  
*Cloth, Front Bucket Deluxe* ..... **AS5**  
*Drivers Only, High Back* ..... **ZX1**  
*Driver and Passenger High Back* ..... **ZX2**  
*Seat Power*  
*Front Passenger Seat (Req AG1, ZX2 and AS5) (32 models only)* ..... **AG2**  
*Front Driver's Seat (Req AS5) (32 models only)* ..... **AG1**  
*Transmission*  
*4-Speed Electronic Automatic with Overdrive* ..... **MT1**  
*Tank, Fuel 55 Gallon (N/A CG31503)*... **NE7**  
*Wheels, Dual Rear (N/A with E23)* ..... **R05**  
*Wheels, Single Rear* ..... **R04**

KEY: ALS = ALL-SEASON SBR = STEEL-BELTED RADIAL PLY BW = BLACKWALL				
TIRE DESCRIPTION		FRONT	REAR	SPARE
LT245 /75R16E	ALS/SBR/BW	XHH	YHH	ZHH
LT225/75R16D	ALS/SBR/BW	XHP	YHP	ZHP

# COMMERCIAL CUTAWAY AND RECREATIONAL VEHICLE CUTAWAY

## DIMENSIONS

MODEL	G CUTAWAY		G CUTAWAY	G RV CUTAWAY		G RV CUTAWAY	G CUTAWAY/ RV CUTAWAY
	CG31503		CG31803	CG31532		CG31832	CG31903/CG31932
MODEL NUMBER	R04	R05	R05	R04	R05	R05	R05
<b>EXTERIOR DIMENSIONS</b>							
<b>BODY</b>							
Wheelbase (in.) L101	139.0		159.0	139.0		159.0	177.0
Overall Length (in.) w/o Rear Bumper L103	241.3		261.3	241.3		261.3	279.4
Overall Height (in.) Nominal H431	N/A		N/A	N/A		N/A	N/A
Maximum Width (in.) W103	76.8	92.3	92.3	76.8	92.3	92.3	92.3
Track Width (in.) Front/Rear W101/102	67.7/67.2	67.7/72.9	67.7/72.9	67.7/67.2	67.7/72.9	67.7/72.9	67.7/72.9
Bumper to Axle (in.) Front L104	33.8		33.8	33.8		33.8	33.8
Cab to Axle (in.) L404	80.0		100.0	80.0		100.0	118.0
Cab to End of Frame (in.)	148.5		168.5	148.5		168.5	186.5
Ground Clearance (in.) Front/Rear H148/H153	N/A		N/A	N/A		N/A	N/A
<b>INTERIOR DIMENSIONS</b>							
Headroom (in.) H61	40.6		40.6	40.6		40.6	40.6
Legroom (in.) L34	41.2		41.2	41.2		41.2	41.2
Shoulder Room (in.) W3	68.8		68.8	68.8		68.8	68.8
Hip Room (in.) W5	63.8		63.8	63.8		63.8	63.8

N/A—Not available at time of publication.

1  
2  
3  
4  
5  
6  
7  
8  
9  
10  
11  
12  
13  
14  
15  
16  
17  
18  
19  
20  
21  
22  
23  
24  
25  
26  
27  
28  
29  
30  
31  
32  
33  
34  
35  
36  
37  
38  
39  
40  
41  
42  
43  
44  
45  
46  
47  
48  
49  
50  
51  
52  
53  
54  
55  
56  
57  
58  
59  
60  
61  
62  
63  
64  
65  
66  
67  
68  
69  
70  
71  
72  
73  
74  
75  
76  
77  
78  
79  
80  
81  
82  
83  
84  
85  
86  
87  
88  
89  
90  
91  
92  
93  
94  
95  
96  
97  
98  
99  
100