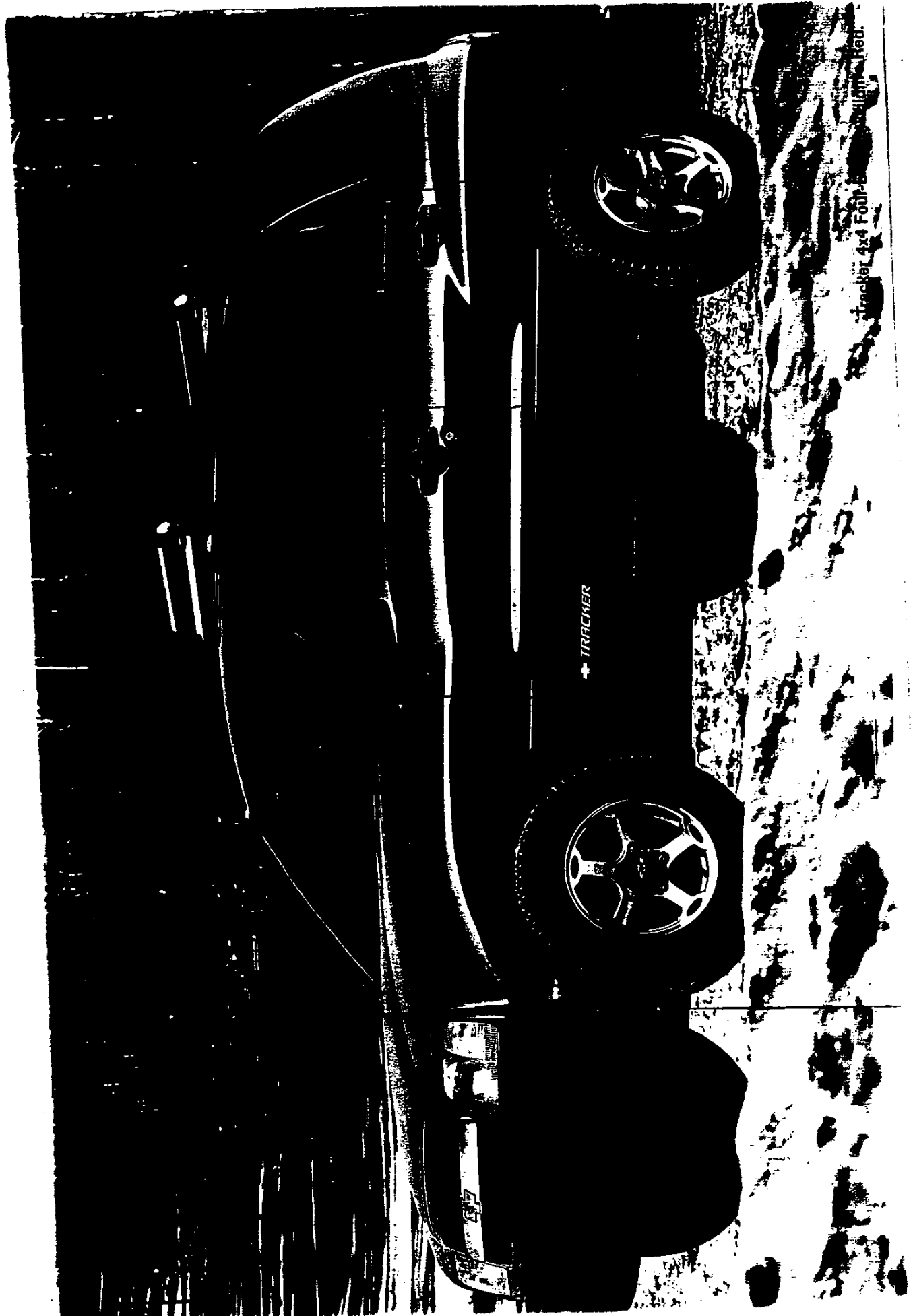


Proud

1999 Chevrolet
Tracker



Tracker 4x4 F0H1-B... Red.



1999 TRACKER HIGHLIGHTS

NEW FOR 1999

- All-New 2.0 Liter 16-Valve 4-Cylinder DOHC Engine (Opt. On 2Dr) (Std. On 4Dr)
- Increased Overall Length (2Dr + 5.1 Inches) (4Dr + 1.1 Inches)
- Increased Vehicle Width (+ 2.5 Inches)
- Increased Tread Width (+ 2.4 Inches)
- 5-Link Rear Suspension
- Canceled 3-Speed Automatic Transmission and 2-Door Expressions Package (WT3)

EXTERIOR

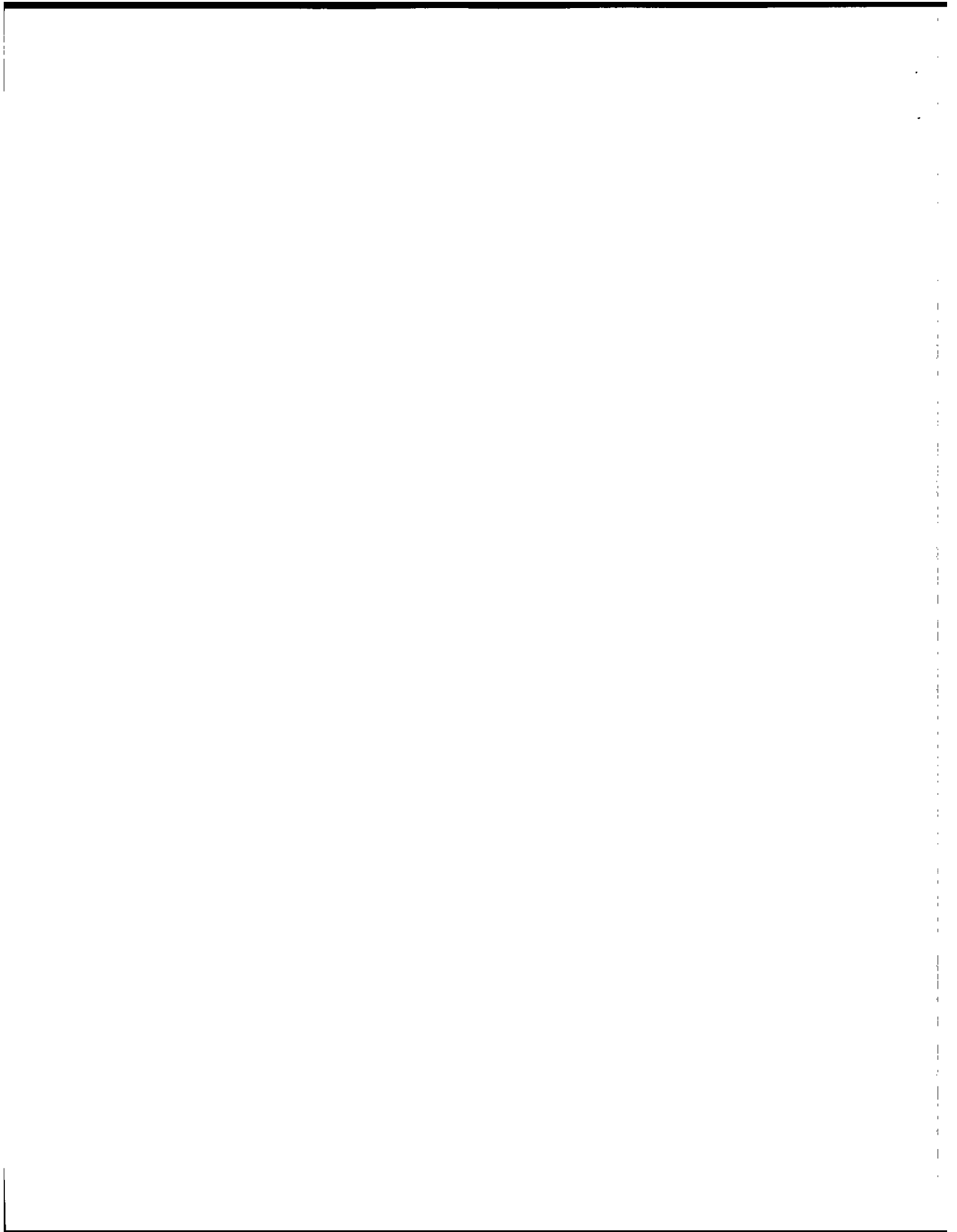
- All-New Sheet Metal and Ladder Frame
- All-New Steel and Alloy Wheel Designs
- Larger Fuel Tanks (+ 3.0 Gals.)
- Power Rack and Pinion Steering (Standard)
- Auto Headlights On (Standard)
- Variable Intermittent Wipers (Optional)
- Keyless Entry (Optional On 4Dr)
- Roof Rack (Optional On 4Dr)
- Tan Top Now Free-Flow (Optional On 2Dr)

INTERIOR

- All-New Interior Design Including Instrument Panel, Seats, and Trim
- Tire Jack, Handle and Wrench Located In Cargo Area Tool Storage Compartment
- More Rear Hip, Shoulder, And Leg Room
- Automatic A/C On In Defog Mode (Standard)
- Delay Entry Lighting (Standard)
- Rear Cargo Light (Standard On 4Dr)
- Automatic Rear Defog Time-Out (Standard On 4Dr)
- 5-Passenger Seating (Standard On 4Dr)
- Tilt Steering Wheel (Optional)
- All-New Amenities Packages (Optional)
- Lockable Storage Compartment (Optional On 2Dr)
- Hood Release Located Under Driver's Side Of Instrument Panel
- All-New Shift-On-The-Fly (4WD)

COLORS

- Dark Green (Met) Replaces Woodland Green (Met)
- Silver (Met) Replaces Silver Sage (Met)
- Canceled Canyon Orange and California Gold



**2-DOOR CONVERTIBLE
STANDARD EQUIPMENT SUMMARY**

CHASSIS

		2 WHEEL DRIVE	4 WHEEL DRIVE
AXLES:	1.6 LITER ENG		
	W/MM5 - 5.12	S	S
	W/MX0 - 4.87	S	S
	2.0 LITER ENG		
BRAKES:	W/MM5 - 4.62	S	S
	W/MX0 - 4.87	S	S
	POWER FRONT DISC/REAR DRUM	S	S
	PARKING, FLOOR	S	S
ENGINE:	1.6 LITER SINGLE OVERHEAD CAMSHAFT 16-VALVE		
	4-CYLINDER MULTI-PORT FUEL INJECTION	S	S
EXHAUST:	STAINLESS STEEL	S	S
FRAME:	LADDER TYPE	S	S
FUEL TANK:	14.8 GALLON	S	S
JACK:	JACK, HANDLE AND WRENCH (CARGO AREA TOOL STORAGE		
	COMPARTMENT)	S	S
SHIELD:	FUEL TANK	S	S
STABILIZER BAR:	FRONT	S	S
STEERING:	POWER RACK & PINION	S	S
SUSPENSION FRT:	MACPHERSON STRUT (SEPARATE COIL SPRING W/LOWER "A" ARM)	S	S
SUSPENSION RR:	5-LINK, WITH UPPER AND LOWER LONGITUDINAL ARMS AND		
	LATERAL CONTROL ARMS	S	S
TRANSFER CASE:	FLOOR, LEVER (SHIFT-ON-THE-FLY)	-	S
TRANSMISSION:	5-SPEED MANUAL WITH 5TH GEAR OVERDRIVE	S	S

INTERIOR

ASSIST GRIPS:	3-POSITIONS	S	S
CONSOLE:	CENTER WITH MULTI-USE CUP HOLDERS AND REAR ASHTRAY	S	S
CUP HOLDERS:	2 IN CONSOLE, 2 IN REAR ARM REST	S	S
DEFOGGER:	SIDE WINDOW DEFOGGER	S	S
DOOR BEAM:	SIDE DOOR IMPACT	S	S
DOORS TRIM PANEL:	MOLDED TRIM WITH ARMREST, INTEGRAL DOOR HANDLE,		
	FABRIC INSERT, STORAGE POCKET AND 6" RADIO SPEAKERS	S	S
FABRIC PROTECTOR:	SEAT FABRIC SCOTCHGARD	S	S
FLOOR COVERING:	FULL CARPETING, INCLUDING CARGO AREA	S	S
GAUGES:	ELECTRONIC SPEEDOMETER, TACHOMETER, ODOMETER, WATER		
	TEMPERATURE, FUEL GAUGE AND DUAL TRIP ODOMETER	S	S
HEAT DUCTS:	POSITIVE SHUT-OFF SIDE VENTS AND REAR DUCTS	S	S
HOOD RELEASE:	DRIVER SIDE UNDER I.P.	S	S
LIGHTER:	CIGARETTE LIGHTER/POWER SOCKET	S	S
LIGHTING:	DELAYED ENTRY LIGHTING	S	S
	FRONT READING LIGHTS INTEGRATED IN REARVIEW MIRROR	S	S
MIRRORS:	DOMED, 3-POSITION	S	S
	INSIDE DAY/NIGHT REARVIEW	S	S
	PASSENGER-SIDE VISOR, VANITY	S	S
POWER POINT:	SINGLE COVERED, LOCATED DRIVER'S SIDE OF CONSOLE	S	S
RADIO:	ETR AM/FM STEREO W/CLOCK AND 4-SPEAKERS	S	S
RESTRAINT SYSTEMS:	NEXT GENERATION DRIVER AND RIGHT FRONT PASSENGER		
	AIR BAG	S	S
SEAT TRIM:	FRONT LAP/SHOULDER SAFETY BELTS W/HEIGHT ADJUSTERS	S	S
	CLOTH FACINGS WITH VINYL SEAT-BACKS	S	S



.....



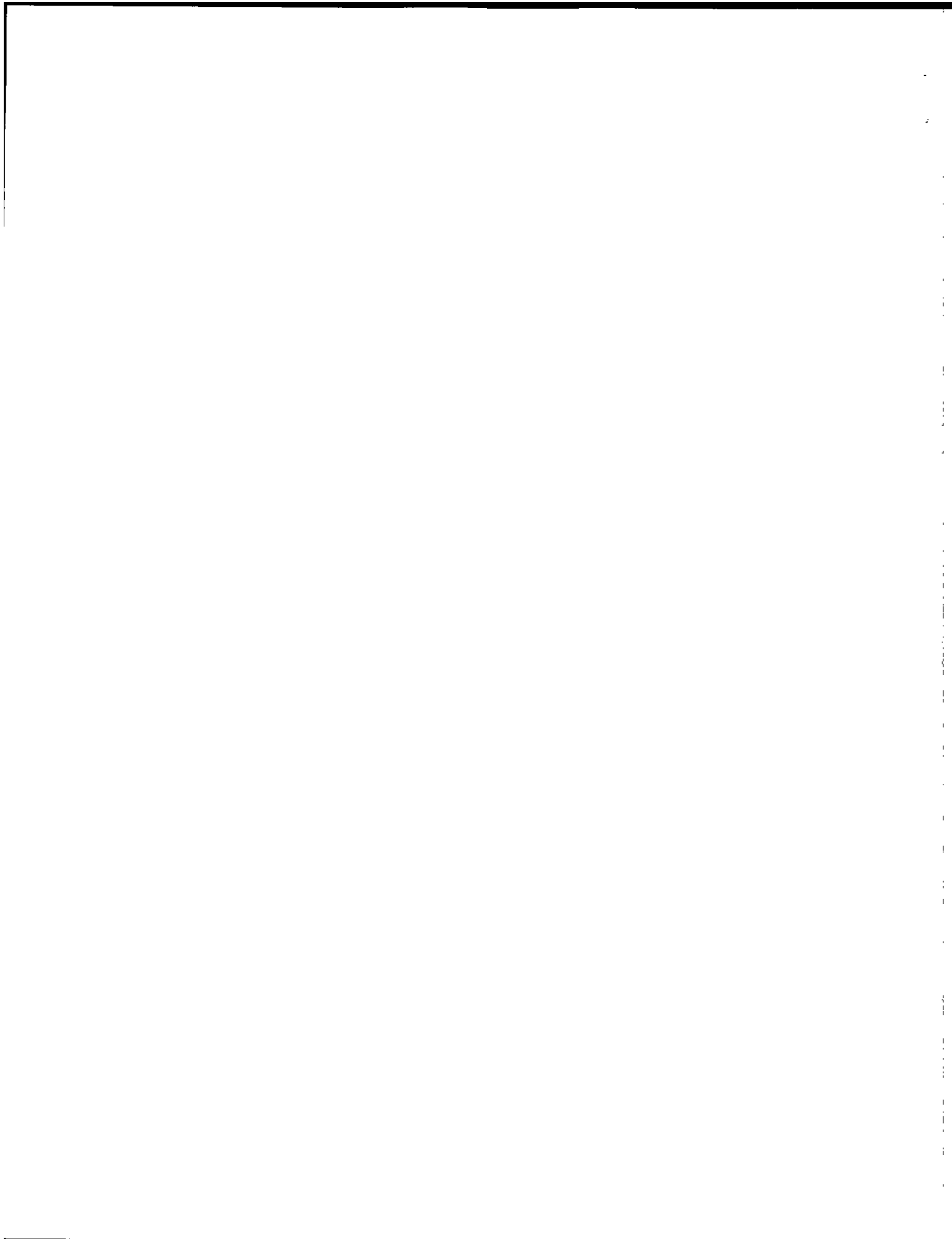
**2-DOOR CONVERTIBLE
STANDARD EQUIPMENT SUMMARY**

INTERIOR (Continued)

		2 WHEEL DRIVE	4 WHEEL DRIVE
SEATS FRONT:	EASY-ENTRY, DRIVER AND FRONT PASSENGER BUCKET, FULLY RECLINING WITH ADJUSTABLE HEAD RESTRAINTS AND SEAT BACK POCKETS	S	S
SEATS REAR:	BENCH, FOLDING WITH ADJUSTABLE HEADRESTS CHILD SEAT TETHER ANCHORS	S	S
TRIM:	FULL COVERAGE (QUARTER, WHEELHOUSE AND PILLARS) MOLDED REAR CARGO DOOR TRIM AND ROOF BOW	S	S
WARNING LIGHTS:	SEAT BELT, PARKING BRAKE, OIL PRESSURE, CHECK ENGINE	S	S
WARNING TONES:	KEY-IN-IGNITION, HEADLAMPS ON, FASTEN SEAT BELT	S	S

EXTERIOR

ANTENNA:	RADIO, TELESCOPING, ONE PIECE	S	S
BUMPERS:	FRONT AND REAR DARK CHARCOAL GRAINED	S	S
FUEL DOOR:	STORES FUEL CAP	S	S
DOORS:	BLACK HANDLES	S	S
GRILLE:	BLACKOUT WITH SURROUNDING BODY COLOR AND CHROME CENTER BAR	S	S
LAMPS:	DAYTIME RUNNING W/AUTO-ON FEATURE	S	S
LIGHTS:	SIDE MARKER, FRONT AND REAR	S	S
MIRRORS:	DUAL OUTSIDE, BLACK	S	S
MOLDINGS:	BODYSIDE, DARK CHARCOAL	S	S
SPARE WHEEL COVER:	HARD PLASTIC CENTER DISK-TYPE	S	S
SPARE/TIRE AND WHEEL:	OUTSIDE, FULL-SIZE, REAR MOUNTED, LOCKABLE	S	S
TAILGATE:	SWING-OPEN RIGHT-HAND HINGED DOOR W/LOCK	S	S
TIRES:	5-P195/75R-15 ALL-SEASON STEEL-BELTED RADIAL BLACKWALL	S	-
	5-P205/75R-15 ALL-SEASON STEEL-BELTED RADIAL BLACKWALL	-	S
TOW HOOKS:	FRONT AND REAR (ONE EACH)	S	S
WHEELS:	STAMPED STEEL WITH BLACK STYLED CENTER CAPS	S	S
WIPERS:	INTERMITTENT, VARIABLE SPEED	S	S



**2WD 2-DOOR CONVERTIBLE MODEL CE10367
4WD 2-DOOR CONVERTIBLE MODEL CJ10367**

*Includes Destination and Handling Charges

MUST ORDER ONE GROUP - NO DELETIONS ALLOWED

	1SA	1SB
Preferred Equipment Group 1 (Refer Standard Equipment Summary)	x	x
Preferred Equipment Group 2		
Air Conditioning		x
Electronically Tuned AM/FM Stereo Radio w/Seek, Tone Select, Stereo Cassette Player, Digital Clock, and Four Speakers		x
Floor Mats, Front and Rear, Carpeted		x

OPTION	ADDITIONAL OPTIONS
	ACKNOWLEDGEMENTS:
R8S	Multiple Order Numbers
R8T	Preliminary Invoice
	AIR CONDITIONING: (MUST SPECIFY)
R6G	Air Conditioning Not Desired (N/A w/Group 1SB)
C60	Air Conditioning (Incl w/Group 1SB) w/1SB w/o 1SB
JM4	BRAKES: 4-Wheel Anti-Lock
BNN	CARGO STORAGE COMPARTMENT: Lockable, Removable
P17	COVER, SPARE TIRE AND WHEEL: Black Vinyl
K34	CRUISE CONTROL: With Resume Speed
	EMISSIONS: (MUST SPECIFY) (Refer Emission Requirements Tab)
FE9	Federal Emission Requirements
NG1	Connecticut, Washington D.C., Delaware, Massachusetts, Maryland, New Hampshire, New Jersey, New York, Pennsylvania, Rhode Island or Virginia Emissions Requirements
YF5	California Emission Requirements
NB8	CA, CT, DC, DE, MA, MD, NH, NJ, NY, PA, RI or VA Emission Override (Reqs FE9 Emissions)
NC7	Federal Emission Override (Reqs YF5 or NG1)
	ENGINES:
L01	1.6 Liter 4 Cylinder 16 Valve SOHC MPI (N/A MX0 Trans)
L34	2.0 Liter 4 Cylinder DOHC MPI
B58	FLOOR COVERING: Front and Rear Carpeted Mats (Incl w/Group 1SB) w/1SB w/o 1SB
ZY1	PAINT, EXTERIOR: Solid



**2WD 2-DOOR CONVERTIBLE MODEL CE10367
4WD 2-DOOR CONVERTIBLE MODEL CJ10367**

OPTION ADDITIONAL OPTIONS (CONTINUED)

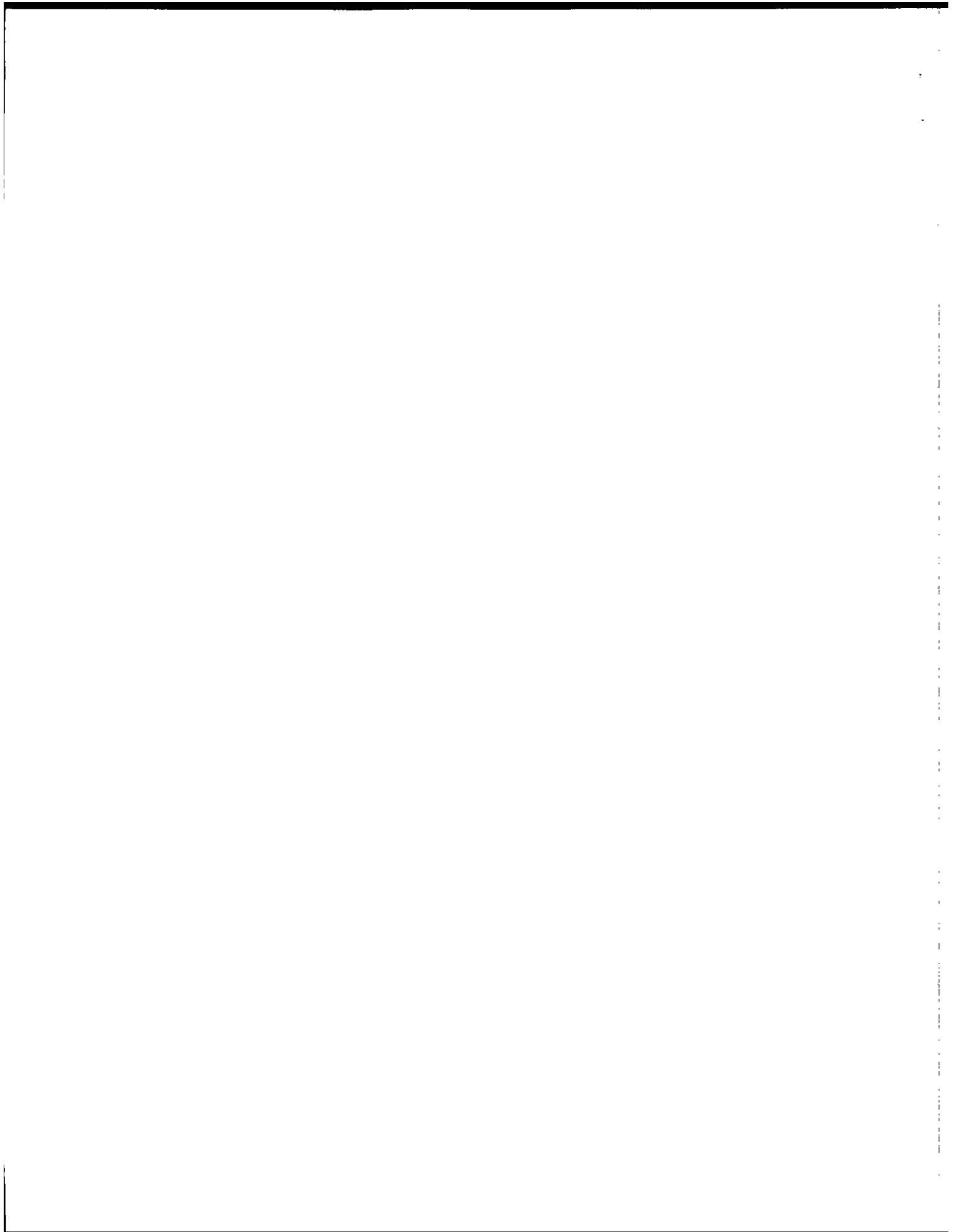
- RADIO EQUIPMENT:**
- UL5** Radio Delete (N/A w/Group 1SB)
 - UL0** Electronically Tuned AM/FM Stereo Radio w/Seek, Tone Select, Stereo Cassette Player, Digital Clock and Four Speakers (Incl w/Group 1SB)
 - UN0** Electronically Tuned AM/FM Stereo Radio w/Seek, Tone Select, Compact Disc Player, Digital Clock and Four Speakers
 - NY7** **SKID PLATES:** Front Differential and Transfer Case (N/A CE10367)
 - N33** **TILT STEERING WHEEL**
 - TOP COLOR: (MUST SPECIFY)**
 - 10T** Convertible Top, White
 - 41T** Convertible Top, Black
 - 61T** Convertible Top, Tan (N/A Silver 17U Paint)
 - TRANSMISSIONS: (MUST SPECIFY)**
 - MM5** 5-Speed Manual with 5th Gear Overdrive
 - MX0** 4-Speed Automatic w/Overdrive (Reqs L34 Eng)
 - QA4** **WHEELS:** 15" Alloy with Steel Spare

INTERIOR AND EXTERIOR COLOR AVAILABILITY CHART

PLEASE NOTE: The Exterior Paint and Interior Trim Combinations Shown Below are the Only Combinations that are Available

SEAT TYPE		MED GRAY
Custom Cloth Bucket		17D
Exterior Paint Color	Color Code	
Black Licorice	19U	x
Blue, Scuba (Met)	32U	x
Green, Medium (Met)	35U	x
Purple Graphite (Met)	89U	x
Red, Sunset (Met)	53U	x
Red, Wildfire (Met)	74U	x
*Silver (Met)	17U	x
White	16U	x

* N/A 61T Tan Top



**4-DOOR HARD TOP
STANDARD EQUIPMENT SUMMARY**

CHASSIS		2 WHEEL DRIVE	4 WHEEL DRIVE
AXLES:	W/MM5 - 4.62	S	S
	W/MX0 - 4.87	S	S
BRAKES:	POWER FRONT DISC/REAR DRUM	S	S
	PARKING, FLOOR	S	S
ENGINE:	2.0 LITER DUAL OVERHEAD CAMSHAFT		
	16-VALVE 4-CYLINDER MULTI-PORT FUEL INJECTION	S	S
EXHAUST:	STAINLESS STEEL	S	S
FRAME:	LADDER TYPE	S	S
FUEL TANK:	17.4 GALLON	S	S
JACK:	JACK, HANDLE AND WRENCH (CARGO AREA TOOL STORAGE COMPARTMENT)	S	S
SHIELD:	FUEL TANK	S	S
STEERING:	POWER RACK & PINION	S	S
STABILIZER BAR:	FRONT	S	S
SUSPENSION FRT:	MACPHERSON STRUT (SEPARATE COIL SPRING W/LOWER "A"ARM)	S	S
SUSPENSION RR:	5-LINK, WITH UPPER AND LOWER LONGITUDINAL ARMS AND LATERAL CONTROL ARMS	S	S
TRANSFER CASE:	FLOOR, LEVER (SHIFT-ON-THE-FLY)	-	S
TRANSMISSION:	5-SPEED MANUAL W/5TH GEAR OVERDRIVE	S	S
INTERIOR			
ASSIST GRIPS:	3-POSITIONS	S	S
CONSOLE:	CENTER WITH MULTI-USE CUP HOLDERS STORAGE TRAY AND REAR ASHTRAY	S	S
CUP HOLDERS:	2 IN CONSOLE	S	S
DEFOGGER:	REAR GLASS WINDOW WITH TIME-OUT FEATURE	S	S
DOOR BEAMS:	SIDE DOOR IMPACT	S	S
DOORS TRIM PANEL:	MOLDED TRIM WITH ARMREST, INTEGRAL DOOR HANDLE, FABRIC INSERT, STORAGE POCKET AND 6" RADIO SPEAKERS	S	S
FABRIC PROTECTOR:	SEAT FABRIC SCOTCHGARD	S	S
FLOOR COVERING:	FULL CARPETING INCLUDING CARGO AREA	S	S
GAUGES:	ELECTRONIC SPEEDOMETER, TACHOMETER, ODOMETER, WATER TEMPERATURE, FUEL GAUGE AND DUAL TRIP ODOMETER	S	S
GLOVE BOX:	LOCKABLE	S	S
HEADLINER:	MOLDED CLOTH	S	S
HEAT DUCTS:	POSITIVE SHUT-OFF SIDE VENTS AND REAR DUCTS	S	S
LIGHTER:	CIGARETTE LIGHTER/POWER SOCKET	S	S
LIGHTING:	DELAYED ENTRY LIGHTING	S	S
	FRONT READING LIGHTS INTEGRATED IN REARVIEW MIRROR	S	S
	DOME, 3-POSITION AND CARGO AREA	S	S
LOCKS:	REAR SIDE DOOR CHILD SAFETY	S	S
MATS:	CARPETED FRONT AND REAR	S	S
MIRRORS:	INSIDE DAY/NIGHT REARVIEW	S	S
	PASSENGER-SIDE VISOR, VANITY	S	S
POWER POINT:	SINGLE COVERED, LOCATED DRIVER'S SIDE OF CONSOLE	S	S
RADIO:	ETR AM/FM STEREO W/CLOCK AND 4-SPEAKERS	S	S



**4-DOOR HARD TOP
STANDARD EQUIPMENT SUMMARY**

INTERIOR (Continued)

		2 WHEEL DRIVE	4 WHEEL DRIVE
RESTRAINT SYSTEMS:	NEXT GENERATION DRIVER AND RIGHT FRONT PASSENGER AIR BAGS	S	S
	FRONT LAP/SHOULDER SAFETY BELTS W/HEIGHT ADJUSTERS	S	S
	REAR OUTSIDE POSITION LAP/SHOULDER SAFETY BELTS, CENTER POSITION LAP BELT	S	S
SEAT TRIM:	CLOTH FACINGS WITH VINYL SEATBACKS	S	S
SEATS FRONT:	BUCKET, FULLY RECLINING WITH ADJUSTABLE HEAD RESTRAINTS AND SEAT BACK POCKETS	S	S
SEATS REAR:	REAR FOLDING BENCH W/SPLIT CUSHION AND SEAT BACK WITH ADJUSTABLE HEADRESTS	S	S
	REAR CHILD SEAT TETHER ANCHORS	S	S
TRIM:	FULL COVERAGE (QUARTER, WHEELHOUSE AND PILLARS)	S	S
	MOLDED REAR DOOR CARGO TRIM	S	S
VENTS:	SIDE WINDOW DEFOGGER	S	S
WARNING LIGHTS:	SEAT BELT, PARKING BRAKE, OIL PRESSURE, CHECK ENGINE, DAYTIME RUNNING LIGHTS	S	S
WARNING TONES:	KEY-IN-IGNITION, HEADLAMPS ON, FASTEN SEATBELT	S	S

EXTERIOR

ANTENNA:	RADIO, TELESCOPING, ONE PIECE	S	S
BUMPERS:	FRONT AND REAR DARK CHARCOAL GRAINED	S	S
FUEL DOOR:	STORES FUEL CAP	S	S
DOORS:	HANDLES, BLACK	S	S
GRILLE:	BLACKOUT WITH SURROUNDING BODY COLOR AND CHROME CENTER BAR	S	S
LAMPS:	DAYTIME RUNNING W/AUTO-ON FEATURE	S	S
LIGHTS:	SIDE MARKER, FRONT AND REAR	S	S
MIRRORS:	DUAL OUTSIDE, BLACK	S	S
MOLDINGS:	BODYSIDE, DARK CHARCOAL	S	S
SPARE WHEEL COVER:	HARD PLASTIC CENTER DISK-TYPE	S	S
SPARE/TIRE AND WHEEL:	OUTSIDE, FULL-SIZE, REAR MOUNTED, LOCKABLE	S	S
TAILGATE:	SWING-OPEN RIGHT-HAND HINGED DOOR W/LOCK	S	S
TIRES:	5-P195/75R-15 ALL-SEASON STEEL-BELTED RADIAL BLACKWALL	S	-
	5-P205/75R-15 ALL-SEASON STEEL-BELTED RADIAL BLACKWALL	-	S
TOW HOOKS:	FRONT AND REAR (ONE EACH)	S	S
WHEELS:	STAMPED STEEL WITH BLACK STYLED CENTER CAPS	S	S
WIPERS:	INTERMITTENT, VARIABLE SPEED	S	S



2WD 4-DOOR HARD TOP MODEL CE10305
 4WD 4-DOOR HARD TOP MODEL CJ10305

*Includes Destination and Handling Charges

MUST ORDER ONE GROUP - NO DELETIONS ALLOWED

	1SA	1SB
Preferred Equipment Group 1 (Refer Standard Equipment Summary)	x	x
Preferred Equipment Group 2		
Air Conditioning		x
Alloy Wheels		
Electronically Tuned AM/FM Stereo Radio w/Seek, Tone Select, Stereo Cassette Player, Digital Clock, and Four Speakers		x

OPTION

ADDITIONAL OPTIONS

ACKNOWLEDGEMENTS:

R8S Multiple Order Numbers

R8T Preliminary Invoice

AIR CONDITIONING: (Note: Must Specify One Of The Following)

R6G Air Conditioning Not Desired (N/A w/Group 1SB)

C60 Air Conditioning (Incls Cabin Pollen Filter) (Incl w/Group 1SB)
 w/1SB
 w/o 1SB

JM4 BRAKES: 4-Wheel Anti-Lock

V54 CARRIER, LUGGAGE: Painted Black

Z05 CONVENIENCE PACKAGE: Incls: Power Windows,
 Power Door Locks, Power Mirrors and Keyless Entry

P17 COVER, SPARE TIRE AND WHEEL: Black Vinyl

K34 CRUISE CONTROL: With Resume Speed



2WD 4-DOOR HARD TOP MODEL CE10305
4WD 4-DOOR HARD TOP MODEL CJ10305

ADDITIONAL OPTIONS (Continued)

EMISSIONS:(Note: Must Specify One Of The Following)(Refer Emission Requirements Tab)

- FE9** Federal Emission Requirements
- NG1** Connecticut, Washington D.C., Delaware, Massachusetts, Maryland, New Hampshire, New Jersey, New York, Pennsylvania, Rhode Island or Virginia Emissions Requirements
- YF5** California Emission Requirements
- NB8** CA, CT, DC, DE, MA, MD, NH, NJ, NY, PA, RI or VA Emission Override (Reqs FE9 Emissions)
- NC7** Federal Emission Override (Reqs YF5 or NG1)
- ZY1** **PAINT:** Solid, Exterior
- RADIO EQUIPMENT:**
- UL5** Radio Delete (N/A w/Group 1SB)
- UL0** Electronically Tuned AM/FM Stereo Radio w/Seek, Tone Select, Stereo Cassette Player, Digital Clock and Four Speakers (Incl w/Group 1SB)
- UN0** Electronically Tuned AM/FM Stereo Radio w/Seek, Tone Select, Compact Disc Player, Digital Clock and Four Speakers
- NY7** **SKID PLATES:** Front Differential and Transfer Case (N/A CE10305)
- N33** **TILT STEERING WHEEL**
- TRANSMISSIONS: (Note: Must Specify One Of The Following)**
- MM5** 5-Speed Manual with 5th Gear Overdrive
- MX0** 4-Speed Automatic w/Overdrive
- QA4** **WHEELS:** 15" Alloy with Steel Spare (Incl w/Group 1SB)
- C25** **WIPER/WASHER:** Rear Window

INTERIOR AND EXTERIOR COLOR AVAILABILITY CHART

PLEASE NOTE: The Exterior Paint and Interior Trim Combinations Shown Below are the Only Combinations that are Available

SEAT TYPE		Gray
Custom Cloth Bucket		17E
Exterior Paint	Color	
	Color	
Black Licorice	19U	x
Blue, Scuba (Met)	32U	x
Green, Medium (Met)	35U	x
Purple Graphite (Met)	89U	x
Red, Sunset (Met)	53U	x
Red, Wildfire (Met)	74U	x
Silver (Met)	17U	x
White	16U	x





1999 PRODUCT INFORMATION GUIDE 





For Release: August 1, 1998

Contact: Chevrolet Communications
Chevrolet Media Online: <http://media.gm.com/chevy>
Phone: 1-800-CHEVY-MI
Fax: 800-504-5073

1999 CHEVY TRACKER BLENDS NEW STYLE, HANDLING AND PERFORMANCE WITH SPORT UTILITY HERITAGE

DETROIT — The name is familiar. But one look at the 1999 Tracker suggests that the Chevy small sport utility has grown up.

The new Tracker — available in either Two-Door Convertible or Four-Door versions, in two- or four-wheel drive — features sporty new looks, more power, nimble ride and handling and a roomier, more comfortable interior.

"People choose small sport utilities because they want function and ruggedness," says John Middlebrook, Chevrolet General Manager. "But they also demand a refined, roomy interior, nimble ride and handling, all wrapped up in a package that's easy to park and easy to drive in traffic. Tracker is the perfect answer for those needs."

Middlebrook says that the vehicle's size and price range make Tracker a key player within the Chevrolet portfolio of sport utilities.

"We offer the industry's widest range of sport utilities," says Middlebrook. "That gives us an incredible marketing advantage. We can tailor each product line to the specific needs of target buyers. When their needs change, and they start looking for more room or more engine power, we have a product they can move into."

Tracker has been redesigned from the ground up; only a few components carry over from previous models. Following are highlights of what's new for 1999.

EXTERIOR STYLING

According to Rick Scheidt, Tracker brand manager, "GM-led designers gave the vehicle a more sculpted, muscular look designed to improve its aerodynamics," says Scheidt. "The overall stance maintains a distinctive sport utility appearance, along with the grille. Tracker is very much a part of the Chevy sport utility family."

Some of the major styling changes on Tracker include:

- A lower roof line and sloping hood that are designed to help improve aerodynamics.
- Contoured edges on the front end, doors, "C" and "D" pillars (Four-Door models) and rear end that provide a sporty new appearance.

— MORE —

- Sculpted fenders and side panels that add a sporty flair.
- A low-mounted spare tire to help improve rearward driver visibility.
- A new two-piece convertible top on Two-Door models. Customers have the option of opening and folding the top, removing only the rear section or doing both. The top fits tightly, and is designed to help reduce vibration and wind noise at highway speeds.

RIDE, HANDLING AND PERFORMANCE

While the styling of Tracker has changed dramatically, Scheidt says that equally dramatic changes were made "under the skin."

The independent front suspension on Tracker helps "eat up" road bumps and smooth out the ride. In addition, the new rear suspension features a five-link design. By adding a lateral locating link to the Tracker rear suspension, engineers were able to make improvements in how the handling feels.

Tread width was increased by 2.4 inches, providing a wider stance. In addition, the recirculating ball steering on the previous Tracker has been replaced by a rack-and-pinion system that provides more precise feel and better responsiveness.

According to Scheidt, new suspension components aren't the only secret to the firm, agile handling on Tracker.

"Unlike some of the new 'unibody' sport utilities, Tracker is built on a full ladder-type frame, just like every sport utility in the Chevy lineup," says Scheidt. "A full frame helps Tracker achieve its new level of ride comfort with two levels of isolation. The suspension provides one level of isolation, and rubber body mounts between the body and frame provide another level."

Scheidt noted that a full frame adds a sense of safety and security, provides a solid, well-built feel and enhances long-term durability.

In addition to the 1.6 liter four-cylinder (standard on Two-Door models), Tracker also features a new 2.0 liter 16-valve DOHC four-cylinder engine for '99. The 2.0 liter is standard on Four-Door models and optional on the Two-Door Convertible. The engine features a 34 percent increase in horsepower and provides Tracker with an impressive power-to-weight ratio.

"To really understand and experience the difference, you have to get behind the wheel and drive the new Tracker," says Scheidt. "Words just don't do it justice."

NEW INTERIORS PROVIDE ADDED ROOM AND COMFORT

Both Two- and Four-Door models have more room, refinements, comfort and convenience. Major new interior features for '99 include the following:

- A wider body provides more room for passengers — enough for three passengers in the rear seat in Four-Door models.
- The tilt steering allows better articulation of the steering wheel than the previous design.
- New storage areas have been incorporated throughout the vehicle — a sunglass holder in the dash; seatback storage; generous door pockets; and a console featuring cupholders that are square instead of round, accommodating everything from cups to juice boxes to a box of french fries.
- Inside the Four-Door, Tracker engineers improved the way the rear seat is folded and stowed, gaining an additional 2.5 square feet of cargo-floor area in the process.
- The Two-Door Tracker is more than six inches longer than its predecessor with a longer rear overhang, which provides an additional 1.3 square feet of cargo-floor area with the rear seat stowed.
- The rear compartment on Two-Door models is much more passenger-friendly, with new armrests and refined interior trim.
- Two-Door Convertible offers a rear lockable storage compartment (as part of an optional Amenities Package) that offers added security.

TRACKER BLENDS REFINEMENT WITH TRUE OFF-ROAD CAPABILITIES

One of Tracker's greatest strengths, says Scheidt, is that it lives up to its sport utility image with true off-road capabilities.

"Tracker isn't just another pretty face," says Scheidt. "It's built to handle very rugged terrain. That's important, because our research tells us that people choose sport utilities for their ruggedness and durability, even if they only go off road on occasion."

The Tracker frame features multiple cross members. The frame acts as a foundation that supports the body and the powertrain, anchors the suspension components, and helps isolate the passenger compartment from the pounding delivered by off-road terrain.

Four-wheel-drive models feature a drastically improved four-wheel-drive system for 1999. "Shift-on-the-fly" four-wheel drive and a two-speed transfer case are standard, allowing the driver to shift into and out of four-wheel-drive high at any speed below 60 mph, on demand.

New for '99 is an anti-flex beam located under the hood (standard with the 2.0 liter engine), which helps stiffen the front suspension and body structure.

TRACKER HITS THE "SWEET SPOT"

"For customers, the new Tracker provides the best of all worlds," says Scheidt. "It puts us in what we call the 'sweet spot' in the market ... more rugged than some competitors, and more refined than others. This perfect combination between refinement and ruggedness is what sets us apart."

Scheidt adds that Tracker will maintain its competitive price position, even with all of its new features and improvements. "The Two-Door is one great convertible," says Scheidt. "If you're looking for a convertible that won't cost a fortune, a Two-Door, two-wheel-drive Tracker will be hard to beat."

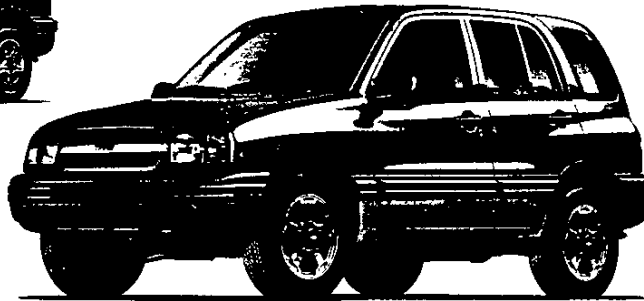
Scheidt says the Tracker refinements are a reflection of Chevy's overall position in the sport utility market. "Over the years, Chevrolet has achieved a great balance with all of its sport utilities — creating vehicles which are refined, comfortable and maintain the rugged heritage of Chevrolet SUVs," says Scheidt. "I think buyers are going to find that this new Tracker represents an excellent execution of that balance."

###

1999 CHEVROLET TRACKER



Tracker 2-Door



Tracker 4-Door

TRACKER AND THE MARKETPLACE

For 1999, Chevy Tracker has gone through its most complete transformation yet. It's new from the ground up — only the name and a handful of components remain the same.

With this substantial reworking, Tracker and its full ladder-type frame stands out in a market increasingly populated with small sport utility vehicle entries that are designed on car platforms.

Even with the added refinements, Tracker hasn't compromised its off-road capabilities. The high ground clearance of Tracker 4x4 keeps you going where most cars can't.

Plus, consumers can choose between 2-Door and 4-Door models to match their needs. Either way, they get a rugged sport utility vehicle that doesn't cost a bundle.

New for 1999

Here are some of the major new features on the 1999 Chevy Tracker:

INTERIOR

- All-new interior (page 4).
- New instrument panel design with an ergonomic layout (page 4).
- Rear seating for three across in the 4-Door (page 6).

EXTERIOR/STRUCTURAL

- All-new GM-influenced design of the exterior (page 7).
- Two new exterior colors: Medium Green Metallic and Silver Metallic (page 8).

ENGINES

- A new 2.0 liter DOHC 16-valve four-cylinder engine is standard on 4-Door models and optional on 2-Door models (page 9).

SUSPENSION

- New five-link rear suspension and 2.4 inches of increased track width (page 11).

FOUR-WHEEL-DRIVE SYSTEM

- The standard system on four-wheel-drive models now provides true shift-on-the-fly capability (page 10).

STEERING

- New rack-and-pinion power steering replaces previous recirculating ball design for precise steering feel (page 11).

WHEELS

- New steel and optional alloy wheel designs (page 11).



1999 CHEVROLET TRACKER



COMPETITORS

2-Door:

- Toyota RAV4
- Jeep Wrangler
- Suzuki Vitara Convertible
- Isuzu Amigo

4-Door:

- Toyota RAV4
- Honda CRV
- Kia Sportage
- Suzuki Vitara Four-Door
- Isuzu Amigo
- Subaru Forester

DEMOGRAPHIC TARGETS

- Age: 25-40
- Income: \$30,000-\$60,000
- Female: 50%

MODELS AND TRIM LEVELS

TRACKER TWO-DOOR CONVERTIBLE

Tracker Two-Door Convertible features this standard equipment:

Interior:

- Next Generation driver and front-passenger air bags*
- Daytime Running Lamps with Automatic Exterior Lamp Control feature
- Center console with multi-use cup holder and ashtray
- Driver and front-passenger door storage pockets
- Delayed-entry lighting
- Passenger assist grips for front and rear passengers
- Rear-seat heat ducts
- Passenger-side visor vanity mirrors
- Front bucket seats with flat-folding rear seat
- Front seatback storage pockets
- AM/FM stereo with digital clock and four speakers
- Full carpeting, including the cargo area
- Easy-entry driver and front-passenger seats (2-Door models only)

- Fixed-interval intermittent windshield wipers
- Locking glove box
- Scotchgard™ protection on seat fabrics.

Exterior:

- Stainless-steel exhaust system
- Black spare tire cover with "Tracker" lettering.

Functional:

- 1.6 liter, 16-valve, 4-cylinder SOHC engine with Multi-Port Fuel Injection
- 5-speed manual transmission with overdrive
- Power rack-and-pinion steering
- Front and rear recovery hooks (one each)
- Shift-on-the-fly four-wheel-drive system with two-speed transfer case (4x4 models only)
- Outside-mounted full-size lockable spare tire
- Tachometer, dual trip odometer and engine coolant temperature gauge
- 14.8 gallon fuel tank
- Battery-rundown protection
- P195/75R-15 all-season steel-belted radial tires with 15" styled steel wheels (2WD models only)
- P205/75R-15 all-season steel-belted radial tires with 15" styled steel wheels (4x4 models only).

*Always use safety belts and proper child restraints, even with Next Generation air bags. See the owner's manual for more safety information.

Tracker 2-Door Convertible offers an optional Amenities Package, which includes:

- Auxiliary power outlet
- Variable-speed intermittent windshield wipers
- Front-seat reading lights (integrated into the rearview mirror)
- Tracker trunk lockable storage compartment.

TRACKER 4-DOOR

Tracker 4-Door features this standard equipment, in addition to or in place of the Tracker 2-Door Convertible standard equipment:

Interior:

- Molded cloth headliner
- Front and rear carpeted floor mats
- Child security rear-door locks
- Split-folding rear seat.

1999 CHEVROLET TRACKER



CONCEPTS:

- Electric rear-window defogger with timed-delay shut-off
- 17.4 gallon fuel tank.

Tracker 4-Door offers an optional Amenities Package, which includes:

- Auxiliary power outlet
- Variable-speed intermittent windshield wipers
- Front-seat reading lights
(integrated into the rearview mirror)
- Roof rack
- Soft cargo-area cover
- Removable side-mounted mesh cargo bags in the cargo area
- Fabric inserts on the door trim panels.

THE CHEVROLET SPORT UTILITY FAMILY

Chevrolet approaches the sport utility market the way a customer would. Instead of viewing the vehicles by their traditional EPA classifications, there's a "family strategy" that segments the full lineup by individual customer need. And, Chevrolet offers the widest sport utility lineup in the industry. Here is how the Chevrolet sport utility family aligns with this strategy:

TRACKER 2-DOOR — An entry-level sport utility with the rugged go-anywhere ability of more expensive vehicles — appeals to adventurous "pioneers."

TRACKER 4-DOOR — An entry-level sport utility for buyers who need additional cargo space — appeals to buyers who need the practicality of a sport utility, at an affordable price.

BLAZER 2-DOOR — A roomy vehicle that offers a sporty styling flair that appeals to young buyers.

BLAZER 4-DOOR — A roomy, five- or six-passenger vehicle with responsive Vortec power for buyers who want the convenience and added utility of four doors.

TAHOE 2-DOOR — One of the few full-size 2-Door sport utilities available.

TAHOE 4-DOOR — A full-size sport utility which does not sacrifice garageability for huge cargo capacity.

SUBURBAN — The largest vehicle in the Chevrolet family has available room for up to nine passengers and heavy-duty towing capacity.

SAFETY AND SECURITY

With a long history of setting automotive safety milestones, GM is a world leader in automotive safety research, development and testing. The 1999 Tracker exemplifies that dedication, providing a comprehensive system of standard safety features, emphasizing crash avoidance and occupant protection.

CRASH AVOIDANCE FEATURES

- **DAYTIME RUNNING LAMPS (DRL)** turn on automatically when the ignition is on and the parking brake is disengaged, to help increase Tracker visibility to other drivers. The DRL system runs the headlamps at a reduced intensity compared to regular headlamp operation.
- **AUTOMATIC EXTERIOR LAMP CONTROL** works with Daytime Running Lamps and automatically activates the headlamps and all other exterior lamps to full intensity when light-sensitive sensors detect darkness for more than 20 seconds. The exterior lamps will shut off when the ignition is turned off.
- **4-WHEEL ANTILOCK BRAKE SYSTEM**, optional on Tracker, automatically adjusts brake pressure to the front and rear wheels during hard braking situations, helping the driver to maintain steering control by minimizing wheel lockup on most slippery surfaces.
- **CLUTCH/STARTER INTERLOCK SWITCH** (standard with manual transmissions) prevents the starter from engaging unless the clutch pedal is depressed.
- **BRAKE/TRANSMISSION SHIFT INTERLOCK** (standard on Tracker models equipped with optional automatic transmissions) prevents the vehicle from being shifted out of Park without the brake pedal first being depressed.



STANDARD OCCUPANT PROTECTION FEATURES

- **NEXT-GENERATION DRIVER AND RIGHT FRONT-PASSENGER AIR BAGS**, designed for use with safety belts, help protect the driver and front passenger in the event of a moderate to severe frontal impact. Always use safety belts and proper child restraints, even with Next Generation air bags. See the owner's manual for more safety information.
- **FRONT AND REAR THREE-POINT SAFETY BELT** system helps restrain outboard passengers.
- **SAFETY-CAGE CONSTRUCTION** includes door and roof pillars; longitudinal side rails; side outrigger bars; and cross-car steel beams under the floor, which are designed to help minimize intrusion into the passenger compartment.
- **FRONT AND REAR CRUSH ZONES** are designed to deform in a controlled manner in a collision, helping absorb impact energy to reduce intrusion into the passenger compartment.
- **HIGH STRENGTH STEEL SIDE-DOOR GUARD BEAMS** in doors are designed to help protect occupants from intrusion into the passenger compartment. Tracker meets all 1999 federal truck safety standards.
- **CHILD SAFETY SEAT TETHER ANCHORS** are featured on rear outboard safety belts. These outboard seating positions have floor-mounted anchor attachment points for use with child safety seats designed for these connections. This feature allows these specially designed child safety seats — soon to be the standard child safety seat design — a firm anchor point for the tether that connects to the top of the child safety seat. The anchor for the bottom of the child seat remains the lap belt.
- **CHILD SECURITY REAR-DOOR LOCKS**, standard on 4-Door Tracker models, prevent the rear doors from being opened from the inside.
- **CROSS-TRUCK BEAM**, integrated into the instrument panel, improves vehicle rigidity.
- **ENERGY-ABSORBING STEERING COLUMN** and instrument panel are designed to help absorb collision impact, reducing injury to the driver's body.

SECURITY FEATURES

- **TRACKER TRUNK LOCKABLE STORAGE COMPARTMENT**, optional on 2-Door models as part of the Amenities Package, is a sturdy, lockable storage compartment for securing valuables. With this option, Convertible drivers need not be concerned about taking valuables with them when they park in public places.
- **BATTERY-RUNDOWN PROTECTION** is standard on all Tracker models. Sixteen minutes after the vehicle has been turned off, a computer turns off any interior lights that were left on, preventing the need for a jump start in many cases.
- **REMOTE KEYLESS ENTRY SYSTEM**, optional on 4-Door models within the Convenience Package (not available on 2-Door), uses a key fob to activate remote locking features and illuminated entry for quick access into a locked vehicle.

INTERIOR FEATURES

The new Tracker features a more refined interior which reflects the input of the truck design staff of General Motors, giving Tracker a family resemblance and functionality similar to that of other Chevy sport utility vehicles.

All interiors feature a Medium Warm Gray trim color for a lighter interior appearance than previous models.

Other Interior Features:

- **REVISED, ERGONOMIC INTERIOR** is featured throughout the inside of Tracker. The manual transmission shifter is located close to the driver, helping reduce the effort needed to shift gears. The transfer case shifter also offers improvements to shifting. Switch and control locations are conveniently placed at the fingertips of the driver, and are logically laid out. For instance, the power window switches are mounted on the door by the windows, not in the center console as is the case in some other vehicles.
- **NEW INSTRUMENT PANEL** contains a gauge cluster with full instrumentation: Electronically controlled speedometer, tachometer, engine coolant temperature gauge, fuel gauge and dual trip odometers.

1999 CHEVROLET TRACKER



- **INTERIOR LIGHTS** feature a 20-second shut-off delay. Lights remain on for 30 seconds after the last door is closed. This reduces the amount of time spent fumbling in the dark with the keys. 4-Door models also feature a rear cargo light for easy loading and unloading in the dark. The dome light features three positions: on, off and door activated.
- **AIR CONDITIONING**, optional on all Tracker models, uses CFC-free refrigerant.
- **AIR CONDITIONING COMPRESSOR AUTO-ON DEFOGGER** mode on the optional air conditioning system activates the air conditioning compressor automatically when the windshield defog position is selected on the climate control system. This arrangement is similar to other Chevy sport utility vehicles and provides dry air to help allow for quick defogging action. This feature was added in direct response to customer feedback.
- **REPLACEABLE POLLEN FILTER**, included on 4-Door models equipped with air conditioning, removes allergens and dust from the passenger compartment.
- **ELECTRIC REAR-WINDOW DEFOGGER**, standard on 4-Door models, clears snow and ice for optimum visibility and has a timed delay shut-off switch.
- **TRUNK WITH LOCKABLE STORAGE COMPARTMENT**, optional on 2-Door models, provides a sturdy, lockable storage area for securing valuables. The Tracker trunk covers the entire cargo area, giving it true trunk-like capacity.
- **AMENITIES PACKAGE**, available on 2-Door models, contains an auxiliary power outlet (located in the center console), variable-speed intermittent windshield wipers, front-seat reading lights (integrated into the rearview mirror) and the lockable Tracker truck storage compartment in the cargo area. 4-Door models add a roof rack, fabric trim inserts on the door trim panels, a cargo-area cover and removable mesh cargo bags that attach to the sides of the cargo area (Tracker trunk available on 2-Door models only).
- **AVAILABLE CONVENIENCE PACKAGE**, optional on 4-Door models, includes power windows, power exterior mirrors and power door locks with Remote Keyless Entry.
- **RUBBER-WHEEL-STYLE STEERING COLUMN** — the design is now similar to the system on other Chevy sport utility vehicles, with a column that articulates more easily. The new design gives Tracker more flexibility than the tilt column designs on Honda CR-V and Toyota RAV4.
- **REAR-SEAT HEAT DUCTS** route warm air to rear of the vehicle for the comfort of rear-seat passengers.
- **POSITIVE SHUT-OFF INSTRUMENT PANEL AIR VENTS** now feature a shut-off switch to cut airflow to vents completely.
- **FIXED-INTERVAL INTERMITTENT WINDSHIELD WIPERS** allow the driver to match wiper speed with weather conditions for optimal visibility. Variable-speed intermittent windshield wipers are included in the optional Amenities Package.
- **SCOTCHGARD PROTECTION**, standard on all models, helps protect cloth seating surfaces from stains and makes cleanups easy.
- **LOCKING GLOVE BOX** helps keep valuables safe. The glove box now features an opening detent which opens partially the glove box doors, protecting the passenger's knees in the process.
- **HOOD RELEASE LEVER** — now located to the left of the driver, under the instrument panel for easy access.
- **ELECTRONIC SPEED CONTROL** is optional for all models.
- **CENTER CONSOLE** features a rear ashtray and new multi-use cup holders that can accommodate cups or juice boxes (standard on all models).
- **DRIVER'S LEFT FOOTREST** (dead pedal) is located on the left kick panel, providing a convenient place for the driver to rest his or her left foot on long trips.
- **SLIDING SUNVISOR EXTENDERS AND PASSENGER VISOR VANITY MIRROR** are standard on all Tracker models. The sunvisor extender slides out to give added protection from the sun. The passenger visor contains a vanity mirror for convenience.
- **FREE-FLOATING HORN PAD** is now featured on the center of the steering wheel, replacing the previous horn buttons on the wheel spokes.

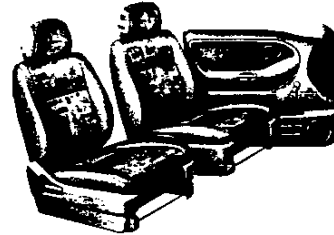


1999 CHEVROLET TRACKER



AUDIO SYSTEMS

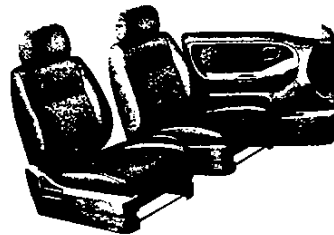
- ELECTRONICALLY TUNED (ETR) AM-FM STEREO featuring seek, digital clock and four speakers is standard on all Tracker models.
- ETR AM-FM STEREO WITH CASSETTE PLAYER, seek, tone select, digital clock and four speakers is optional on all models.
- ETR AM-FM STEREO WITH COMPACT DISC PLAYER, seek, tone select, digital clock and four speakers is optional on all models.



- 2-DOOR MODELS feature Cityscapes pattern inserts and Torrent bolsters with cloth facings and vinyl seatbacks with storage pockets.

SEATS

- BUCKET SEATS WITH ADJUSTABLE HEAD RESTRAINTS and seatback storage pockets are standard on all Tracker models.
- FLAT FOLDING REAR SEAT is standard on 2-Door models and creates a flat load floor so that cargo is easier to load. The seat is folded by moving the seat bottom forward, and then folding the seatback down into a scooped-out area of the floor.
- TRUE SPLIT-FOLDING REAR SEAT DESIGN is now standard on 4-Door models. This seat folds flat for better loading capability than the previous design.
- THREE-ACROSS SEATING for rear passengers on 4-Door models.



- 4-DOOR MODELS feature Wicker pattern inserts and Torrent bolsters with cloth facings and vinyl seatbacks with storage pockets.

INTERIOR COLOR

- Medium Warm Gray.

SEAT TESTING

From the beginning of the development process, engineers set out to improve the comfort of the Tracker seating — an effort that involved countless hours of research and testing.

Early seats were tested several times by people of varying body sizes and types for different time intervals. Initial findings were documented after a tester had been

sitting for 10 minutes — the approximate time a customer would sit in the seat in a showroom vehicle. At the end of 10 minutes, the test subject helped engineers pinpoint excess pressure areas on the body.

This same test procedure was then repeated at 1-hour (most trips are less than 1 hour) and 2-hour (lengthy enough to

approximate a leg of an extended trip) intervals. When an uncomfortable amount of pressure was experienced by the test subjects — so much so that a design change was needed — the seats were redesigned and then tested in the same manner all over again. The process continued until the seats provided the desired level of comfort, even on long trips.

1999 CHEVROLET TRACKER



EXTERIOR / STRUCTURAL FEATURES

EXTERIOR FEATURES

Chevy Tracker now bears a stronger family resemblance to the other sport utility vehicles in the Chevy lineup — Blazer, Tahoe and Suburban — because the truck design staff at General Motors influenced the new Tracker Styling.

Features of the new exterior include a lower roof, different hood slope, deeply sculpted side panels, muscular fender flares, curves on the front and rear pillars, charcoal-grained bumpers, body-color grille with prominent Chevy logo and charcoal body-side and black rocker panel moldings.

Other Tracker Exterior Features:

- **EXTERIOR-MOUNTED SPARE TIRE** is mounted low to help improve rearward visibility. The spare tire also features a wheel lock to prevent theft, and a cover emblazoned with the Chevy Tracker logo.
- **CENTER HIGH-MOUNTED STOPLAMP** on 2-Door models is mounted on the spare tire carrier. 4-Door models have the stoplamp on the inside of the rear window.
- **TAILGATE** opens to the side. Also, the entire tailgate on Tracker opens in a one-step process for quick access to the cargo area. A contrasting example is the Honda CRV, which requires you to pop the tailgate glass and then open the gate.
- **DUAL BLACK EXTERIOR REARVIEW MIRRORS** are standard on all Tracker models.
- **POWER MIRRORS** are included in the optional Driver Convenience Package (Z05 — 4-Door only).
- **FUEL TANK INCREASE**, by 2.9 gallons for 4-Door models, brings the new capacity to 17.4 gallons, and a 3.7-gallon increase in the capacity for 2-Door models brings the new capacity to 14.8 gallons.

- **FUEL FILLER DOOR** incorporates a convenient holder for the fuel cap during refueling.
- **OPTIONAL ROOF RACK**, available on 4-Door models, increases cargo-carrying flexibility.
- **TWO-PIECE CONVERTIBLE TOP** is easier to raise and lower than the previous model. The two-piece design allows owners to open the front section, rear section, or both. Top colors available: White, Black and Tan (Tan not available with Silver Metallic).
- **REAR-WINDSHIELD WIPER WASHER** is optional on 4-Door models and features a fixed delay.
- **ELECTRIC REAR DEFOGGER** is standard on all 4-Door models (not available on 2-Door), and features a timer that automatically shuts power off after approximately 20 minutes.
- **STANDARD FRONT AND REAR RECOVERY HOOKS** (one each) provide convenient attachment points for off-road pulling situations.

Tracker Exterior Accessory Packages:

Dealer-installed accessory packages are available to add to the style and utility of Tracker models.

- **HANG TEN EDITION TRACKER (2-DOOR ONLY)** — includes alloy wheels, Hang Ten “wetsuit” seat covers, Hang Ten spare tire cover and Hang Ten logo decal and side stripe decal.
- **OFF-ROAD PACKAGE** — includes alloy wheels, brush/grille guard, light bar, fender flares, body-side moldings, B-pillar decal (2-Door only) and a windshield decal.
- **BACKPACKER PACKAGE (4-DOOR ONLY)** — includes alloy wheels, roof rack, utility bar for roof rack, hard-shell rooftop cargo carrier, hard spare tire cover and step package at the rear of the vehicle to facilitate access to the roof-mounted cargo carrier.



1999 CHEVROLET TRACKER



STRUCTURAL FEATURES

Unlike some other small sport utilities that utilize unibody construction, Tracker uses a full-steel ladder-type frame.

- **FULL LADDER-TYPE FRAME** — the hallmark of Chevy SUVs. The frame features boxed side rails and seven crossmembers for added reinforcement. This frame design resists twisting for better durability and a solid, stable ride on- and off-road. In addition, major components are protected within the confines of the frame.
- **ANTI-FLEX BAR**, located in the engine compartment, is mounted between the front suspension towers. The bar increases the rigidity of the already tight body structure for a solid feeling. This component's benefits also translate to a more solid on-road ride. The anti-flex bar is standard on models equipped with the 2.0 liter engine.
- **STEEL CROSS-TRUCK BEAM**, located underneath the instrument panel, provides a stable mount for the instrument panel and steering column and adds rigidity, which helps reduce squeaks and rattles.
- **OPTIONAL SKID PLATES** on 4x4 models cover the front differential and transfer case for added protection from rocks and other large obstructions. A fuel tank shield is standard on all models.
- **8.0-INCH GROUND CLEARANCE** (4x4 models) allows Tracker to step over rough terrain. 2WD models feature a 7.2-inch ground clearance. Major components are located above the minimum ground clearance.

EXTERIOR PAINT/COLORS

Standard basecoat/clearcoat paint on Tracker resists fading and provides a high gloss shine for long-lasting exterior beauty. The clearcoat system is formulated to minimize the effects of acid rain and other environmental damage. Clearcoat finish is

used with all colors except white. The paint process builds up six layers of protection on every new Tracker (basecoat, four layers of color, clearcoat). In addition, all body sheet-metal components are warranted against rust-through corrosion for 6 years or 100,000 miles (whichever comes first).

- **TOTAL IMMERSION PHOSPHATE ELECTRODEPOSITION (ELPO)** process applies the first layer of primer/paint. Electric voltage is applied to the bodies while they're submerged in the paint bath to ensure complete coverage, even in hard-to-reach areas.
- **GLOSSY WATER-BASED HIGHLIGHTING SOLUTION** — applied to all exterior surfaces to reveal any imperfections before the body is painted.

Paint Colors For '99:

- Black Licorice
- Scuba Blue Metallic
- Medium Green Metallic
- Purple Graphite Metallic
- Sunset Red Metallic
- Wildfire Red Metallic
- Silver Metallic
(not available with Tan convertible top)
- White.

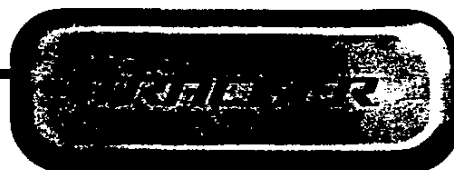
Convertible Top Colors:

- White
- Black
- Tan (not available with Silver Metallic).

MANUFACTURING

Tracker is manufactured by CAMI Automotive, Inc. in Ingersoll, Ontario, Canada — a joint venture between General Motors and Suzuki Motor Co., Ltd.

1999 CHEVROLET TRACKER



ENGINES

1.6 LITER SOHC 16-VALVE L4 ENGINE

Two-Door models feature the standard 1.6 liter, single overhead camshaft, 16-valve, four-cylinder engine with Multi-Port Fuel Injection.

Power ratings for the 1.6L engine are:

- 97 HORSEPOWER at 5200 rpm
- 100 LB.-FT. OF TORQUE at 4000 rpm.

Features of this engine:

- ALUMINUM CYLINDER HEAD AND CYLINDER BLOCK help ensure more even heat distribution than cast iron. Aluminum also weighs less than cast-iron engine components, thereby aiding fuel economy.
- DIRECT IGNITION SYSTEM — two coil packs service the spark plugs (two cylinders per coil pack) on the 1.6 liter engine. This system does not use a distributor and rotor, eliminating common wear items.
- MULTI-PORT FUEL INJECTION (MFI) precisely measures fuel to the engine via an intake runner, for easy starting in all weather conditions.

Here's how it works:

- MFI's high precision fuel control uses one injector and nozzle per cylinder for optimum cylinder-to-cylinder fuel distribution.
- A mass airflow meter constantly measures the engine's air requirements under varying conditions, such as changes in load, altitude and temperature to help ensure accurate fuel delivery.
- The injector nozzle's design and optimum location produce an effective spray pattern that contributes to the engine's smooth idle and outstanding fuel efficiency.

2.0 LITER DOHC 16-VALVE L4 ENGINE

All 1999 Tracker 4-Door models feature the standard 2.0 liter, dual overhead camshaft, 16-valve, four-cylinder engine with Multi-Port Fuel Injection. This engine is also optional on 2-Door models.

Power ratings for the 2.0 L engine are:

- 127 HORSEPOWER at 6000 rpm.
- 134 LB.-FT. OF TORQUE at 3000 rpm.

Features of this engine include:

- ALUMINUM CYLINDER HEAD AND CYLINDER BLOCK help ensure more even heat distribution than cast iron. Aluminum also weighs less than cast-iron engine components, thereby aiding fuel economy.
- CHAIN-DRIVEN CAMSHAFT provides long-term durability for precise valve timing.
- DIRECT IGNITION SYSTEM — individual coil packs are mounted adjacent to each spark plug on the 2.0 liter engine. This system does not use a distributor and rotor, eliminating common wear items.
- MULTI-PORT FUEL INJECTION precisely measures fuel to the engine via an intake runner, for easy starting in all weather conditions. Here's how it works:
 - MFI's high precision fuel control uses one injector and nozzle per cylinder for optimum cylinder-to-cylinder fuel distribution.
 - A mass airflow meter constantly measures the engine's air requirements under varying conditions, such as changes in load, altitude and temperature to help ensure accurate fuel delivery.
 - The injector nozzle's design and optimum location produce an effective spray pattern that contributes to the engine's smooth idle and outstanding fuel efficiency.



TRANSMISSIONS

FIVE-SPEED MANUAL TRANSMISSION WITH 5TH-GEAR OVERDRIVE

A five-speed manual transmission is standard on all Tracker models.

- **WIDE RANGE OF GEAR RATIOS** (3.65:1 – 0.80:1) accommodate everyday driving conditions — from a quick start off the line to low rpm cruising for optimal fuel economy.
- **FIFTH-GEAR OVERDRIVE** reduces engine rpm at cruising speed, increasing fuel economy and reducing engine wear.
- **AXLE RATIOS** are matched for efficient operation. 2-Door models with the 1.6 liter engine feature a 5.12 axle ratio. 2- and 4-Door models with the 2.0 liter engine feature a 4.62 ratio with the five-speed manual transmission.

FOUR-SPEED AUTOMATIC TRANSMISSION

A four-speed, electronically controlled automatic transmission is optional on Tracker models equipped with the 2.0 liter engine. Features of this transmission:

- **POWER ECONOMY SWITCH** allows drivers to tailor performance to driving conditions by delaying upshifts when "power" is selected.
- **AXLE RATIOS** are matched for efficient operation. 2- and 4-Door models with the 2.0 liter engine feature a 4.87 axle ratio.
- **LONG-LIFE AUTOMATIC TRANSMISSION FLUID** will not need to be replaced for up to 100,000 miles* under normal operating conditions.

*Maintenance needs vary with different uses and driving conditions. See owner's manual for more information.

FOUR-WHEEL DRIVE SYSTEM

- **SHIFT-ON-THE-FLY**, four-wheel-drive system with automatic locking front hubs is now standard on all 4x4 Tracker models. This provides drivers with the ability to switch into and out of four-wheel drive without getting out to lock or unlock the front hubs, or having to back the vehicle up to disengage the system. This system, unlike competitive all-wheel-drive systems, also gives drivers the ability to choose when four-wheel drive is engaged and when it is disengaged, allowing complete control over the system.
 - The four-wheel-drive system offered on Tracker directs power to both axles equally, so the chances that the constantly turning wheels will make use of the available traction are greatly increased. This contrasts to all-wheel-drive and some on-demand four-wheel-drive systems that send power to the wheels with traction.
- **TWO-SPEED TRANSFER CASE** provides a four-wheel-drive low setting for serious situations, such as intense off-roading, or when driving through deep mud or snow. To shift the vehicle into four-wheel-drive low: stop the vehicle, shift the transmission into neutral and shift the transfer case into 4-Lo.

1999 CHEVROLET TRACKER



SUSPENSION

FRONT

- **FRONT SUSPENSION** consists of independent MacPherson struts on both front wheels. The MacPherson struts use a coil spring separate from the shock absorber. This suspension system offers a stable ride, yet takes up minimal space. A front stabilizer bar is standard on the all Tracker models. The stabilizer bar helps reduce the "leaning" feeling vehicles tend to exhibit when cornering.

REAR

- **FIVE-LINK DESIGN** with a rigid "live" axle connected by upper and lower longitudinal arms, as well as a lateral locating link, is featured on the rear. This design provides a comfortable ride on-road, yet rugged dependability in off-road situations. Each side uses two trailing control arms to keep the axle in place, resisting forward and aft motions. Additionally, the lateral locating link, or Panhard bar, is connected at one end to the axle, and at the other end to the frame. This component is used to counteract side-to-side forces placed on the axle.

STEERING

- **RACK-AND-PINION POWER STEERING SYSTEM** replaces a recirculating ball system. The rack-and-pinion system provides precise feedback and good on-center feel.

BRAKES

- **POWER FRONT DISC / REAR DRUM BRAKES** are standard on all Tracker models. Both models feature vented front disc brakes to help improve fade-resistance under hard braking.
- **LARGER FRONT ROTORS AND PADS** are standard on 2.0 liter-equipped Tracker models to handle the increased weight of the larger engine.
- **4-WHEEL ANTILOCK BRAKES** are optional on all Tracker models. The antilock brake system brings the vehicle to a controlled stop under a variety of road conditions. By controlling the amount of braking pressure to each wheel, ABS allows steering control to be maintained during hard braking situations.

WHEELS AND TIRES

WHEELS



- 15-inch styled steel wheels are standard on both 2- and 4-Door models.



- 15-inch alloy wheels are optional on both 2- and 4-Door models. The spare tire's wheel is made of steel.

*Wheels shown are representative for the 1999 model year and are subject to change.

TIRES

- P195/75R-15 all-season steel-belted radial tires are standard on 2WD Tracker models.
- P205/75R-15 all-season steel-belted radial tires are standard on 4x4 models.



1999 CHEVROLET TRACKER



HISTORY

BY MODEL (YEAR)

- 97 — 4WD Tracker LSi 2-Door Convertible introduced; automatic transmission optional for all models.
- 98 — 2WD Tracker 2-Door Convertible Tracker introduced.
- 99 — Automatic transmission and aluminum wheels available on all models; new interior fabrics; new instrument panel.
- 00 — Optional new-design aluminum wheels; all-season tires; new interior fabrics; Expressions Package introduced.
- 01 — Easy-opening convertible top; 1.6 liter, 16-valve 4-cylinder engine standard on 4WD models.
- 02 — All-new 4-Door model; 1.6 liter, 16-valve MFI engine standard on 2WD models; new grille, fascia, moldings, hood design and instrument panel; standard DRL; driver and front-passenger air bags added.
- 03 — Enhanced evaporative emissions system; fold-and-stow rear bench seat standard on 2-Door models.
- 04 — Tracker rebadged as a Chevrolet. 4-Door LSi model discontinued. All 4-Door models receive new options formerly available only with the LSi model.

AFFINITY

RELATIONSHIPS

Because Chevrolet offers the most comprehensive lineup of cars and trucks of any automotive manufacturer, it goes without saying that there is a product for virtually everyone, whatever their needs. From the bass fisherman who needs a reliable truck to tow his fishing boat, to the soccer mom who needs a dependable van to get the team to the fields, Chevrolet can offer a vehicle to fit anyone's lifestyle.

With this in mind, Chevrolet created what has come to be known as "Affinity Marketing." Through it, Chevrolet has developed relationships with over eighty lifestyle organizations, sporting groups and spokespeople that represent the image of Chevrolet cars, trucks and the people who drive them. These relationships help Chevrolet market its products and services while offering marketing support to groups like the United States Figure Skating Association and Ducks Unlimited. Affinity Marketing also builds relationships with individuals. These people reflect the Chevrolet vision of excellence, like 1998 Olympic Gold Medalist Tara Lipinski and country music star George Strait.

Additional Affinity Marketing relationships (pending approval):

- Campus Fest Tour
- Hang Ten
- Horde Music Tour.

For more information, call 1-800-CHEVY-MI.

1999 CHEVROLET TRACKER



GENUINE CUSTOMER CARE

Chevrolet owners are covered by Genuine Customer Care, a comprehensive owner protection plan that includes the following:

NEW VEHICLE LIMITED WARRANTY

This warranty is for GM vehicles in the United States. Owners should see their Chevrolet dealer for complete terms and conditions of this New Vehicle Limited Warranty. Items covered for 3 years or 36,000 miles* for manufacturer's defects include:

- The complete vehicle
- Tires
- Towing to the nearest Chevrolet dealership
- Sheet-metal coverage:
 - Corrosion coverage
 - Rust-through coverage†
- Repairs made to correct any vehicle defect
- No charge for most warranty repairs.

COURTESY TRANSPORTATION

Customers who purchase or lease a 1999 Chevrolet car or truck are eligible for Courtesy Transportation (at no charge) when their vehicles are left at a participating dealership for repairs covered under the 3-year/36,000-mile* New Vehicle Limited Warranty. Courtesy Transportation, at participating dealerships only, may include shuttle service, expense reimbursement or, if the repairs require leaving the vehicle overnight, alternate transportation. Actual services may vary at the election of the participating dealer. Owners should see their dealer for details.

ROADSIDE ASSISTANCE**

Roadside Assistance service is provided through a toll-free 800 number, 24 hours a day, 365 days a year. Roadside Assistance advisors can assist with minor mechanical problems over the phone or coordinate a variety of services through professional service providers.

Basic Care provides:

- Free towing for warranty repairs (to closest dealer)
- Over-the-phone basic technical advice
- Available dealer services at reasonable costs (i.e., wrecker services, locksmith/key service, glass repair, etc.).

Roadside Basic Care covers you as long as the owner owns their Tracker.

Courtesy Care provides:

- Free towing (to closest dealer)
- Free locksmith/key service (when keys are lost on the road or locked inside)
- Free flat tire service, jump start and fuel delivery.

Roadside Courtesy Care is available for a period of 3 years or 36,000 miles (whichever comes first).

*Whichever comes first.

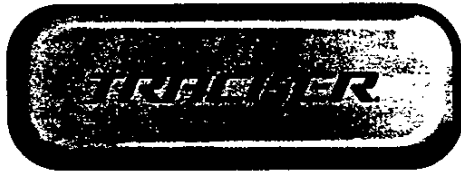
†Six years or 100,000 miles, whichever comes first.

**Roadside Assistance membership is free. Some services may incur costs. Courtesy Care is available to retail, retail lease and corporate lease customers operating 1994 and newer Chevrolet vehicles for a period of 3 years/36,000 miles, whichever comes first. All Courtesy Care services and associated costs must be prearranged by Chevrolet Roadside Assistance or dealer service management and must be driver-initiated. Basic Care and Courtesy Care are not part of or included in the coverage provided by the New Vehicle Limited Warranty. Chevrolet reserves the right to modify or discontinue Basic Care and Courtesy Care at any time. Owners should see their dealer for complete details of the Chevrolet Roadside Assistance Program.

Important — a word about this document: We have tried to make this document as comprehensive and factual as possible. We reserve the right, however, to make changes at any time, without notice, in colors, materials, equipment, specifications, models and availability. Some information may have been updated since the time of printing in June, 1998.

A note about Next Generation air bags: Always use safety belts and proper child restraints, even with Next Generation air bags. See the owner's manual for more safety information.

Some artwork contained within this text is for representation purposes only.



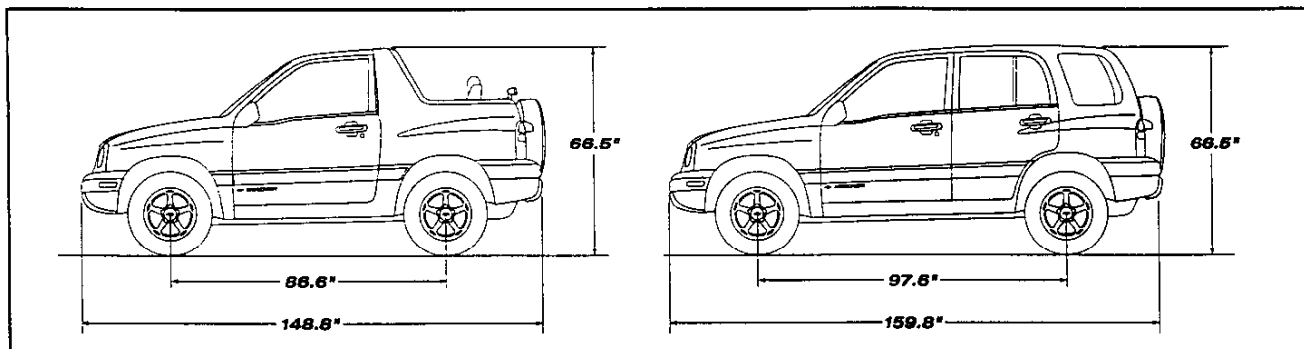
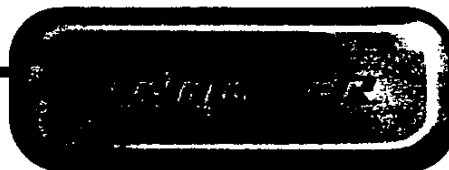
1999 TRACKER FEATURE AVAILABILITY



	2-Door Convertible 2WD/4x4	4-Door 2WD/4x4
INTERIOR		
Air Bags - Next Generation Driver and Front-Passenger ¹	S	S
Air Conditioning - with CFC-Free Refrigerant	O	O ²
Assist Grips - 3 Positions	S	S
Carpeting - Full, Including Cargo Area	S	S
Center Console - w/Cup Holders, Storage Tray and Ashtray	S	S
Defogger - Rear-Window Electric	NA	S
Door Locks - Power	NA	O
Floor Mats - Carpeted Front and Rear		S
Rear-Seat Heat Ducts		S
Scotchgard™ Protection - on Cloth Seats	S	S
Seats - Rear, Fold and Stow	S	NA
- Rear, Split Folding	NA	S
- Easy-Entry Front	S	NA
Seat Trim - Cloth Facings with Vinyl Seatbacks	S	S
Stereo - AM/FM	S	S
- AM/FM w/Cassette Player	O	O
- AM/FM w/CD Player	O	O
Tilt Steering Column	O	O
Windows - Power	NA	O ³
EXTERIOR		
Daytime Running Lamps with Automatic Exterior Lamp Control	S	S
Bumpers - Front and Rear, Dark Charcoal	S	S
Hubs - Front Automatic Locking	NA/S	NA/S
Mirrors - Dual Outside, Black, Manual	S	S
- Dual Outside, Black, Power	NA	O ³
Moldings - Body-Side, Dark Charcoal	S	S
Skid Plates - Front and Transfer Case	NA/O	NA/O
Skid Plate - Fuel Tank	S	S
Rear Window Wiper/Washer	NA	O
Tailgate - Swing-Open Right-Hand Hinged Door w/Lock	S	S
Tires - P195/75R-15 All-Season Radial	S/NA	S/NA
- P205/75R-15 All-Season Radial	NA/S	NA/S
Recovery Hooks - Front and Rear (one each)	S	S
FUNCTIONAL		
Brakes - 4-Wheel Antilock	O	O
- Front Disc, Rear Drum	S	S
Speed Control - Electronic, w/Resume Speed	O	O
Engine - 1.6 Liter SOHC 16 Valve L4 Multi-Port Fuel Injection	S	NA
Engine - 2.0 Liter DOHC 16 Valve L4 Multi-Port Fuel Injection	O	S
Stainless Steel Exhaust	S	S
Steering - Power Rack and Pinion	S	S
Suspension - MacPherson Strut with Separate Coil Springs and Lower "A" Arm, Front	S	S
- 5-Link with Upper and Lower Longitudinal Trailing Arms and Lateral Control Arm, Rear	S	S
Transfer Case - 2-Speed Shift on the Fly	NA/S	NA/S
Transmission - 5-Speed Manual	S	S
- 4-Speed Automatic	O ⁴	O

S — Standard. O — Optional (some options may be available only as part of a Preferred Equipment Group). NA — Not available. 1 Always use safety belts and proper child restraints, even with Next Generation fuel air bags. See the owner's manual for more safety information. 2 Includes replaceable pollen filter. 3 Requires Convenience Package. 4 Requires 2.0L engine.

1999 TRACKER SPECIFICATIONS



MODEL AVAILABILITY

Chevy Tracker 2-Door Convertible and Tracker 4-Door

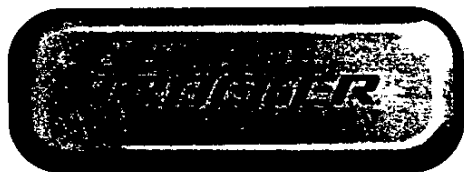
EPA vehicle class Special Purpose Vehicle

Assembly CAMI, Ingersoll, Ontario

DIMENSIONS & CAPACITIES (inches/millimeters, unless otherwise noted)

Models	2-Door	4-Door
Exterior Dimensions		
Wheelbase	86.6/2200	97.6/2480
Length (overall)	148.8/3780	159.8/4060
Width (overall)	66.7/1695	66.7/1695
Height (overall)	66.5/1690	66.5/1690
Tread — front	57.3/1455	57.3/1455
Tread — rear	57.5/1460	57.5/1460
Lift-over height	NA	NA
Minimum running ground clearance (4x4)	8.0/202	8.0/202
Interior Front Dimensions		
Headroom	40.8/1035	40.7/1035
Legroom	41.3/1050	41.3/1050
Shoulder room	53.0/1345	52.8/1342
Hip room	50.8/1290	50.7/1287
Interior Rear Dimensions		
Headroom	NA	39.6/1005
Legroom	35.9/912	35.9/912
Shoulder room	52.7/1339	52.6/1336
Hip room	43.1/1096	45.2/1147
Capacities		
Passenger capacity	4	5
Passenger index (cu. ft./liters)	NA	NA
Cargo index (cu. ft./liters)	NA	NA
Fuel tank capacity (gal./liters)	14.8/56.0	17.4/65.9
EPA interior index (cu. ft./liters)	NA	NA
Base curb weight (lbs./kg, 2WD)	2596/1180	2860/1300
Base curb weight (lbs./kg, 4WD)	2717/1235	2891/1355
Cargo volume (cu. ft./liters)	10.2/289.6	20.2/573.5
Cargo volume (cu. ft./liters with rear seat down)	24.0/681.4	34.7/985.2

NA — information not available at time of publication.



1999 TRACKER SPECIFICATIONS



STEERING

Type	Power Rack-and-Pinion
Ratio (overall)	NA
Turns stop-to-stop	NA
Turning diameter curb-to-curb (ft./m)	31.5-34.8/9.6-10.6 (2-door - 4-door)
Turning diameter wall-to-wall (ft./m)	NA

BRAKES

Models	2-Door and 4-Door
Type	Power vented front disc/rear drum (4-Wheel ABS opt.)
Front disc rotor outer working diam. (in.)	NA
Rear drum diameter x width (in.)	NA
Total swept area, front/rear (sq. in.)	NA

ENGINE

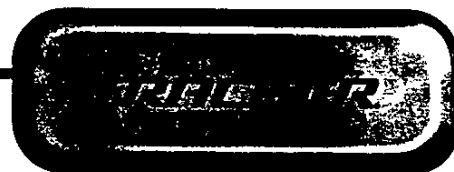
Type	1.6 Liter, 16-valve, SOHC L4	2.0 Liter, 16-valve, DOHC L4
Block	Aluminum alloy	Aluminum alloy
Cylinder head	Aluminum alloy	Aluminum alloy
Hydraulic lifters	NA	Standard
Bore & Stroke (in.)	2.95 x 3.45	3.31 x 3.45
(mm)	75.0 x 90.0	84.0 x 90.0
Cam drive	Belt	Chain
Redline	NA	NA
Displacement (liters/cid)	1.6/97	2.0/121
Compression ratio	9.5:1	9.3:1
Fuel induction	MFI	MFI
Horsepower/kW @ engine rpm	97 @ 5200/72 kW @ 5200	127 @ 6000/95 kW @ 6000
Torque/N-m (lb.-ft.)	100 @ 4000/136 N-m @ 4000	134 @ 3000/182 N-m @ 3000
Exhaust system	Single	Single
Tailpipe(s)	Stainless steel	Stainless steel
Ignition system	Direct ignition	Direct ignition with one coil per cylinder
Alternator rating (amps)	NA	NA
Battery (SAE capacity rating, cca)	NA	NA
Recommend fuel (unleaded)	87 octane	87 octane

TRANSMISSIONS

Transmission	Standard 5-speed manual	Optional 4-speed automatic electronically controlled
Layout	RWD longitudinal	RWD longitudinal
Gear ratios:		
1st	3.65	2.83
2nd	1.95	1.49
3rd	1.38	1.00
4th	1.00	0.73
5th	0.80	-
Reverse	3.67	2.70
Final-drive ratios	5.12*	4.87

*4.62 with 2.0L engine. NA — Information not available at time of publication.

1999 TRACKER SPECIFICATIONS



CHASSIS

Chassis

Structure/frame	Body with separate ladder-type frame
Body material	Steel
Suspension — front	
Type	MacPherson strut with separate coil spring, double-action telescoping shocks
Stabilizer bar/diameter (mm)	NA
Suspension — rear	
Type	Rigid axle with 5-link design — upper and lower trailing arms, Panhard bar and double-action telescoping shock absorbers

MILEAGE/PERFORMANCE*

Engine	1.6 Liter L4	2.0 Liter L4	2.0 Liter L4
Transmission	5-speed manual	5-speed manual	4-speed automatic
Mileage:			
City	NA	NA	NA
Highway	NA	NA	NA
Combined	NA	NA	NA
Est. Cruising Range:			
City	NA	NA	NA
Highway	NA	NA	NA
Combined	NA	NA	NA

TRAILERING INFORMATION

	2-Door	4-Door
Trailer classification	Light	Light
Gross trailer weight (lbs./kg, up to)	1000/454	1500/680
Max tongue load (lbs./kg)	100/45	150/68

WHEELS & TIRES

Wheel type/size	Steel/15" x 5.5"
Tire type	all-season steel-belted radial
Tire size	P195/75R-15 (2WD) P205/75R-15 (4x4)
Spare size	Full-size spare

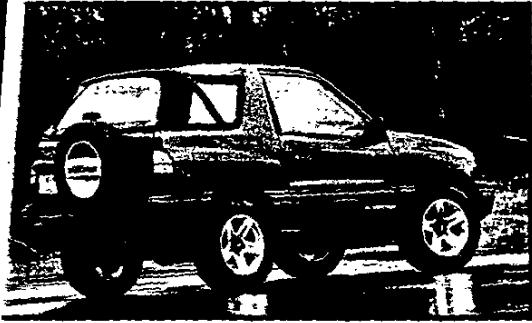
All specifications are preliminary and subject to change. NA — Information not available at time of publication.



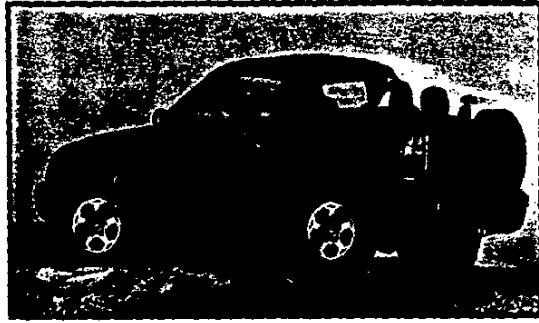
Vertical text or markings along the right edge of the page, possibly a page number or margin indicator.



CHEVROLET TRACKER PHOTO ORDERING



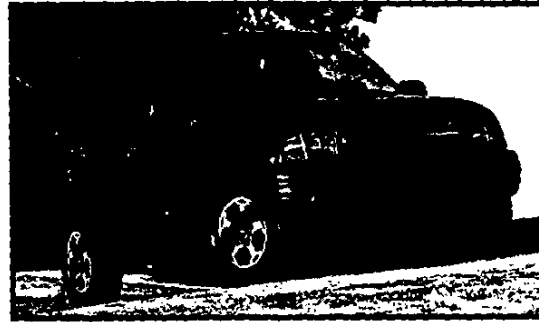
9-01TKR 2-Door Tracker shown with standard steel wheels



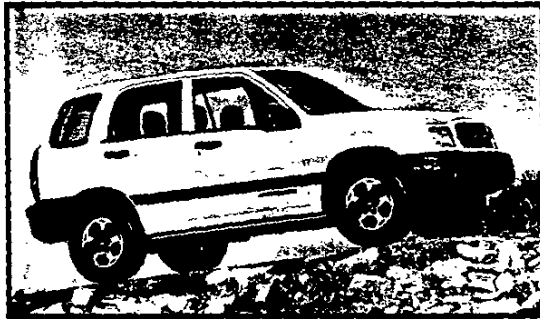
99-02TKR 2-Door Tracker shown with optional aluminum wheels



99-03TKR 2-Door Tracker shown with optional aluminum wheels



99-04TKR 4-Door Tracker shown with optional aluminum wheels



99-05TKR 4-Door Tracker shown with optional aluminum wheels



99-06TKR 4-Door Tracker shown with optional aluminum wheels

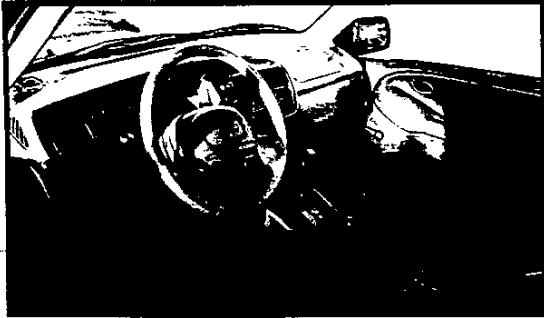


99-07TKR 4-Door Tracker shown with optional aluminum wheels

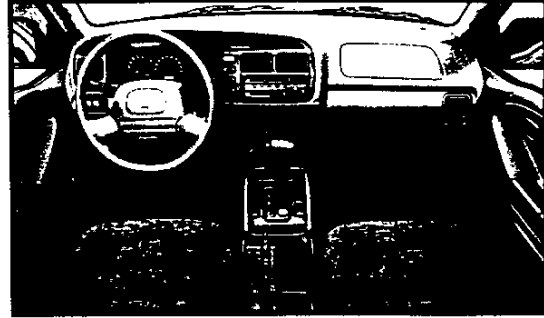


99-08TKR 2- and 4-Door Trackers shown with optional aluminum wheels

1999 CHEVROLET TRACKER PHOTO ORDERING



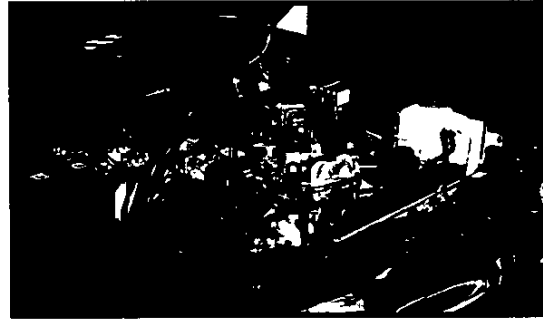
99-09TKR 2-Door Tracker Interior



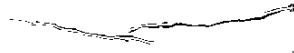
99-10TKR 2-Door Tracker Interior



99-11TKR 4-Door Tracker Cargo Area



99-12TKR Optional 2.0L engine (L34)



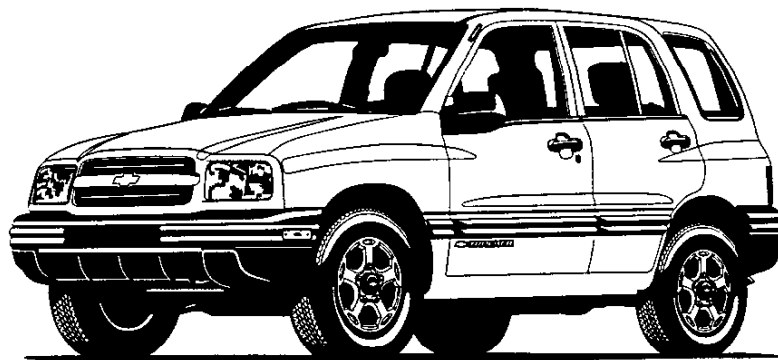
CHEVROLET TRACKER INTRODUCTION

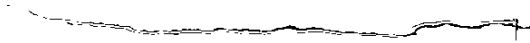
CHEVROLET TRACKER

The new 1999 Chevrolet Tracker is available in both two-door convertible and four-door hardtop 2WD and 4WD models. Two-door and 4-door models are available in one trim level, Base.

Some of the Major Changes on the Chevrolet Tracker for 1999 include:

- All-New Exterior Sheet Metal
- All-New Interior Design
- All-New Wheel Designs
- New 2.0L 16-Valve 4-Cylinder DOHC Engine
- New Rack-and-Pinion Steering System
- New 5-Link Rear Suspension
- 2.5 Inches of Increased Tread Width
- 6 Inches Increased Overall Length on 2-Door Models; 1.5 Inches Increased Length on 4-Door Models
- Improved Rear Visibility with Low-Mounted Spare
- Larger Gas Tank Capacity
- New Passenger Compartment Pollen Filter (4-Door w/Air Conditioning)
- New Front Seat Belt Height Adjustment
- New "Shift-on-the-Fly" 4WD Operation
- New Delayed Entry Lighting
- New Battery-Run-down Protection
- New Auxiliary Power Outlet (req. Amenities pkg.)
- New Easy-to-Operate Two-Piece Convertible Top (2-Door)
- New Rear-Seat Folding System
- New Three-Across Rear Seating (4-Door)
- New Positive Shut-Off for Side Air Vents
- New Optional Front Map Reading Lights (req. Amenities pkg.)
- New 4-Door Rear Cargo Light
- Relocated Tool Storage Area
- New Exterior Colors
- New Interior Color
- New Seat Designs and Seat Fabrics





CHEVROLET TRACKER

MODEL SELECTION SUMMARY

Use the chart below to choose the model that fits your customer's needs. Please note that the Base Payloads shown reflect the maximum allowable weight of cargo that can be carried in a standard model, including occupants. (They are calculated by subtracting curb weight from GVWR.) Also, the Maximum Trailer Weights shown on the last page of this section are based on vehicles that are properly equipped. See your 1999 Chevrolet Truck Order Guide for specific details.

SERIES	MODEL NUMBER/ BODY CODE/ OPTION CODE	PASSENGER CAPACITY (STD./OPT.)	STANDARD ENGINE/ TRANS.	OPTIONAL ENGINE/ TRANS.	GVWR (LB)	GAWR (LB) FRONT/ REAR	BASE PAYLOAD (LB)
TWO-WHEEL-DRIVE MODELS							
2-DOOR 2WD CONVERTIBLE	CE10367	4/—	1.6L/M5	2.0L/M5/A4	3373	1499/2028	N/A
4-DOOR 2WD HARDTOP	CE10305	5/—	2.0L/M5	2.0L/A4	3814	1764/2205	N/A
FOUR-WHEEL-DRIVE MODELS							
2-DOOR 4WD CONVERTIBLE	CJ10367	4/—	1.6L/M5	2.0L/M5/A4	3483	1587/2050	N/A
4-DOOR 4WD HARDTOP	CJ10305	5/—	2.0L/M5	2.0L/A4	3924	1852/2227	N/A

N/A—Not available at time of publication.

POWERTRAINS

Chevrolet offers two transmissions and two engines for Tracker. The following charts detail basic engine, transmission and axle specifications. See your 1999 Chevrolet Truck Order Guide for details.

ENGINES		
	1.6 Liter L4	2.0 Liter L4
Order Code	L01	L34
SAE Net Horsepower @ rpm	117 @ 5200	127 @ 6000
SAE Net Torque lb-ft @ rpm	103 @ 4000	124 @ 3000
Fuel System	SFI	SFI
Standard Battery Cold Cranking Amps @ 0°F	390	550
Standard Alternator Maximum Capacity (Amps)	60	70

TRANSMISSIONS		
	5-SPEED MANUAL W/OVERDRIVE	4-SPEED AUTOMATIC W/OVERDRIVE
Order Code	MM5	MX0
Availability	All Models	All Models
Gear Ratios		
First	3.65	2.83
Second	1.95	1.49
Third	1.38	1.00
Fourth	1.00	0.73
Fifth	0.80	—
Reverse	3.67	2.70



Vertical dotted line on the right side of the page.



CHEVROLET TRACKER

AXLES						
Pinion and Ring Gear Type	REAR			FRONT (4X4)		
	Hypoid			Hypoid		
Transmission Availability (Order Code)	MM5 w/L01	MX0	MM5 w/L34	MM5 w/L01	MX0	MM5 w/L34
Ratio	5.12	4.87	4.62	5.12	4.87	4.62
Pinion Teeth	8	8	8	8	8	8
Ring Gear Teeth	41	39	37	41	39	37
Ring Gear Diameter (in.)	7.48	7.48	7.48	6.92	6.92	6.92

Note: Axle Ratio availability depends on model, powertrain and emissions selected. See your 1999 Chevrolet Truck Order Guide for details.
N/A—Not available at time of publication.

TRIM LEVELS

Chevrolet offers 2-door and 4-door Trackers in one trim level, "Base." The following chart details major standard features. See your 1999 Chevrolet Truck Order Guide for more details.

CHASSIS EQUIPMENT			
KEY: ■ = STANDARD, — = NOT INCLUDED		2-DOOR CONVERTIBLE	4-DOOR HARDTOP
BRAKES	Power-assisted front disc, rear drum (includes floor-mounted parking brake).	■	■
EXHAUST	Single, stainless steel.	■	■
FRAME	Separate ladder-type frame.	■	■
FUEL TANK	14.8-gallon (approx.) capacity. 17.4-gallon (approx.) capacity.	■	—
REAR AXLE	Differential; with hypoid gear and taper bearings.	■	■
SHOCK ABSORBERS	32mm piston diameter.	■	■
STABILIZER BAR, FRONT	2-Door .866 in. 4-Door .944 in.	■	■
STEERING	Power rack and pinion.	■	■
SUSPENSION, FRONT	MacPherson strut with separate coil spring, lower "A" arm.	■	■
SUSPENSION, REAR	Coil springs and upper and lower longitudinal links w/lateral locating link.	■	■
RECOVERY HOOKS	One front, one rear.	■	■
TRANSFER CASE	Floor, lever (Shift-on-the-Fly) on 4x4 models only.	■	■

EXTERIOR EQUIPMENT			
ANTENNA	Telescoping (one piece, A-pillar).	■	■
BUMPERS, FRONT AND REAR	Charcoal-grained.	■	■
DOOR HANDLES	Black.	■	■
DOOR, REAR	Swing-open, right-hand hinged; with lock.	■	■
HEADLAMPS	Composite halogen.	■	■
GLASS	Tinted.	■	■
GRILLE	Body color surround, chrome center bar, and "Bowtie" emblem.	■	■
HORN	Single-note electric.	■	■
MIRRORS	Dual rearview black.	■	■
MOLDINGS	Bodyside, dark charcoal.	■	■
SPARE TIRE/WHEEL	Full-size with hard plastic center disk-type cover with "Chevrolet Tracker" logo (rear mounted).	■	■
TIRES	P195/75R15 all-season radials. (2WD models only.) P205/75R15 all-season radials. (4WD models only.)	■	■
TOP	2-piece canvas; with fold-and-stow feature above doors.	■	—
WHEELS	15" stamped steel.	■	■
WINDOWS	Plastic zip-out rear sides and rear. Tailgate glass.	■	—
WIPERS	Fixed, intermittent.	■	■

N/A—Not available at time of publication.



CHEVROLET TRACKER

INTERIOR EQUIPMENT

KEY: ■ = STANDARD, — = NOT INCLUDED		2-DOOR CONVERTIBLE	4-DOOR HARDTOP
ARMRESTS	RH and LH on door panels.	■	■
ASSIST HANDLES	3-positions, front and rear passenger.	■	■
CIGARETTE LIGHTER	Includes ashtray (auxiliary power outlet w/Amenities pkg.).	■	■
CONSOLE	Center console.	■	■
CUPHOLDERS	Two in console. Two in rear armrest (2-door).	■	—
DEFOGGER	Rear window electric w/time-out feature.	—	■
DOOR PANELS	Full cover molded trim, storage pocket, 6" radio speakers and integral door handle.	■	■
FILTER	Passenger compartment pollen filter (4-door w/air conditioning only).	—	■
FLOOR COVERING	Full carpet.	■	■
GAUGES	Fuel, electronic speedometer, dual trip odometer, tachometer, temperature and telltale lights.	■	■
GLOVE BOX	Lockable.	■	■
HEADLINER	Molded cloth.	—	■
HEATER	Includes windshield and side-window defoggers (includes positive shut-off side vents and rear ducts).	■	■
LIGHTING	Three-position dome light w/delayed entry feature (includes cargo light on 4-door).	■	■
MIRROR	Rearview, day/night.	■	■
RADIO	ETR AM/FM stereo w/clock and 4-speakers.	■	■
SEAT, FRONT	Reclining bucket seats with adjustable head restraints, cloth inserts and bolsters, and vinyl seatbacks (includes easy-entry feature). Reclining bucket seats with adjustable head restraints, cloth inserts, facings and bolsters, with vinyl seatbacks.	■	—
SEAT, REAR	Fold-and-flip forward-stowing rear bench seat w/child seat tether anchors. Fold-and-flip bench seat with split-folding seatback and cushions (includes rear child seat tether anchors).	■	—
SEATS	Scotchgard™ Fabric Protector on cloth seating surfaces.	■	■
SUN VISORS	Extenders and passenger-side vanity mirror.	■	■
TOOLS	Jack, jack handle and wheel wrench located in cargo area.	■	■

SAFETY EQUIPMENT

		2-DOOR CONVERTIBLE	4-DOOR HARDTOP
AIR BAGS*	Full frontal driver and passenger (next generation).	■	■
LAMPS	Daytime running lamps with "Auto-On" feature.	■	■
DOOR BEAMS	Side-door guard beams.	■	■
SEAT BELTS	Outboard seating lap and shoulder belts w/front seat height adjusters.	■	■
STEERING COLUMN	Energy-absorbing.	■	■
STOPLAMP	Center high-mounted stoplamp (CHMSL).	■	■
TRANSMISSION	Includes brake/transmission shift interlock (Automatic).	■	■

*Always wear your safety belts.

PREFERRED EQUIPMENT GROUPS

Preferred Equipment Groups (PEGs) are convenient option packages. See your 1999 Chevrolet Truck Order Guide and Vehicle Price Schedule for specific information and prices.

OPTIONS

These options can be ordered individually in addition to the Preferred Equipment Groups, if not already included. See your 1999 Chevrolet Truck Order Guide for specific availability and restrictions. The Option Code is listed in **bold type**.

Air Conditioning **C80**
 Air Conditioning (not desired) **R6G**
 Brakes, Four-Wheel Anti-Lock **JM4**
 Amenities Package (2-door includes remote power outlet, variable speed wipers, front reading light and lockable storage area. 4-door includes remote power outlet, variable speed wipers, front reading light, roof rack, cargo area cover, dual detachable cargo bags and door fabric trim) **T2U**
 Convenience Package (includes power windows, power door locks and power mirrors and keyless entry (4-door models only) **Z05**
 Cruise Control **K34**
 Emissions
 Federal **FE9**
 California **YF5**

CT, DC, DE, MA, MD, NH, NY, PA, RI, and VA **NG1**
 Federal Emissions Override **NC7**
 CA, CT, DC, DE, MA, MD, NH, NY, PA, RI and VA Emissions Override .. **NB8**
 Engine
 1.6 Liter SOHC 16V L4 MFI **L01**
 2.0 Liter DOHC 16V L4 MFI **L34**
 Floor Mats, Color-Keyed Front and Rear Carpeted (2-door only) **B58**
 Radio
 Electronically tuned AM/FM Stereo with Seek and Digital Clock (includes four speakers) **UL1**
 Electronically Tuned AM/FM Stereo with Seek-Scan, Tone Select, Stereo Cassette, Digital Clock and Theft Deterrent (incls. four speakers) **ULO**
 Electronically Tuned AM/FM Stereo

with Seek-Scan, Tone Select, Digital Clock, Theft Deterrent and Compact Disc Player (incls. four speakers) **UN0**
 Radio Delete **UL5**
 Tilt Steering Wheel **N33**
 Top Color (convertible models only):
 White **10T**
 Black **41T**
 Tan **61T**
 Transfer Case Shield Includes Front Differential Shield (4x4 only) **NY7**
 Transmission, 5-speed Manual with Overdrive **MM5**
 Transmission, 4-speed Automatic with Overdrive (4-door only) **MX0**
 Wheels, Alloy (steel spare) **QA4**
 Window Wiper, Rear (includes washer; 4-door models only) **C25**



1
2
3
4
5
6
7
8
9
10
11
12
13
14
15
16
17
18
19
20
21
22
23
24
25
26
27
28
29
30
31
32
33
34
35
36
37
38
39
40
41
42
43
44
45
46
47
48
49
50
51
52
53
54
55
56
57
58
59
60
61
62
63
64
65
66
67
68
69
70
71
72
73
74
75
76
77
78
79
80
81
82
83
84
85
86
87
88
89
90
91
92
93
94
95
96
97
98
99
100



CHEVROLET TRACKER

DIMENSIONS

MODEL	2-DOOR 2WD CONVERTIBLE	2-DOOR 4WD CONVERTIBLE	4-DOOR 2WD HARDTOP	4-DOOR 4WD HARDTOP
MODEL NUMBER	CE10367	CJ10367	CE10305	CJ10305
EXTERIOR DIMENSIONS				
BODY				
Wheelbase (in.)	86.6	86.6	97.6	97.6
Overall Length (in.)	151.6	151.8	162.6	162.8
Overall Height (in.)	66.5	66.5	65.6	66.5
Maximum Width (in.)	67.3	67.3	67.2	67.3
Overhang				
Front	29.7	29.7	29.7	29.7
Rear	35.2	35.4	35.2	35.2
Ground to Top of Rear Load Floor (in.)	N/A	N/A	N/A	N/A
Ground Clearance (in.)				
Minimum	7.2	8.0	7.2	8.0
Turning Diameter Curb-to-Curb (ft)	31.5	31.5	34.8	34.8
Track Width (in.) Front/Rear	57.5/57.5	57.5/57.5	57.5/57.5	57.5/57.5

Headroom (in.)				
Front/Rear	40.9/N/A	40.9/N/A	39.9/39.6	39.9/39.6
Legroom (in.)				
Front/Rear	41.4/35.9	41.4/35.9	41.4/35.9	41.4/35.9
Shoulder Room (in.)				
Front/Rear	53.0/52.6	53.0/52.6	52.8/52.6	52.8/52.6
Hip Room (in.)				
Front/Rear	50.6/46.8	50.6/46.8	50.7/46.8	50.7/46.8
Cargo Volume (cu ft)				
w/Rear Seat Up	10.2	10.2	20.2	20.2
w/Rear Seat Stowed	33.7	33.7	44.7	44.7
Load Floor Length (in.)				
w/Front Seat	36.6	36.6	47.6	47.6
w/Front, Rear Seat	17.1	17.1	28.2	28.2
Interior Width (in.)				
At Floor	N/A	N/A	N/A	N/A
Between Wheelhousings	42.5	42.5	42.5	42.5

N/A—Not available at time of publication.

TRAILERING

ENGINES/ TRANSMISSIONS	1.6 LITER L4/2.0 LITER L4 MANUAL /AUTOMATIC	
	MAXIMUM TRAILERING	
MODEL	AXLE RATIO	MAX. TONGUE LOAD/ MAX. TRAILER WEIGHT (lb)
2-DOOR TRACKER	4.62	100/1000
	4.87	100/1000
	5.12	100/1000
4-DOOR TRACKER	4.62	150/1500
	4.87	150/1500
	5.12	150/1500

Note: Maximum trailer weight is calculated assuming the driver and one passenger are in the tow vehicle and it has all required trailering equipment.

